

GloveSetup User Manual

DGTech Engineering Solutions
www.dg-tech.it

Release 1.1.0 October 2007

Introduction

GloveSetup allows the users to define the data glove used by the PC. It allow also to test the data glove performance and calibrate it. The use it is immediate and it does not change if the user use a USB or a Bluetooth version of the VHand 2.0.

The software has been tested on Windows 98/2000 and Xp.

Installation

Download from www.dg-tech.it/glove/GloveSetup.zip the latest software version and uninstall any previous software version.

Unzip the downloaded package

Launch the Setup.exe and follow the installation instructions.

If everything has gone fine, an icon called GloveSetup.exe should be present on the desktop.

Double click on the icon GloveSetup.exe will launch the software.

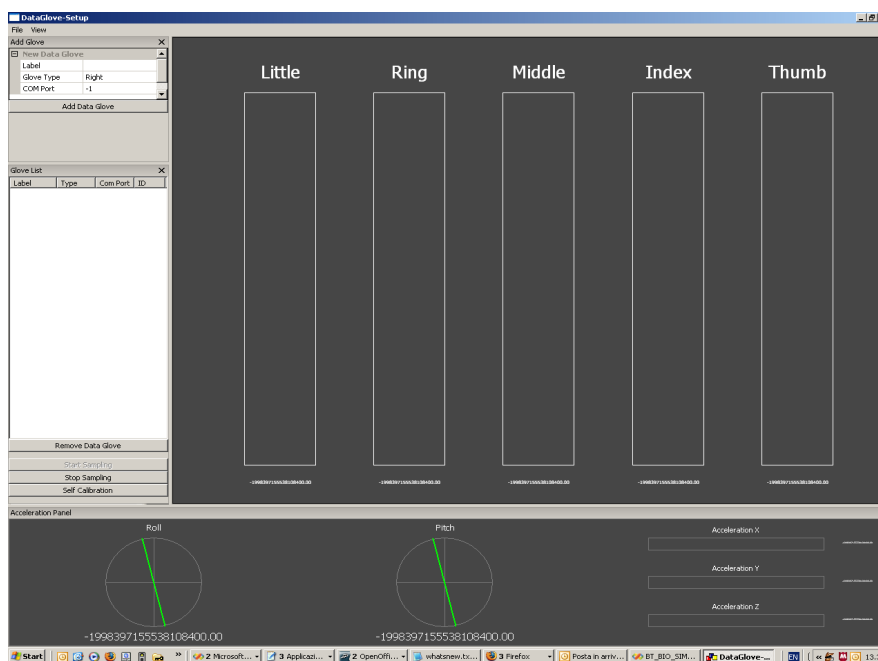
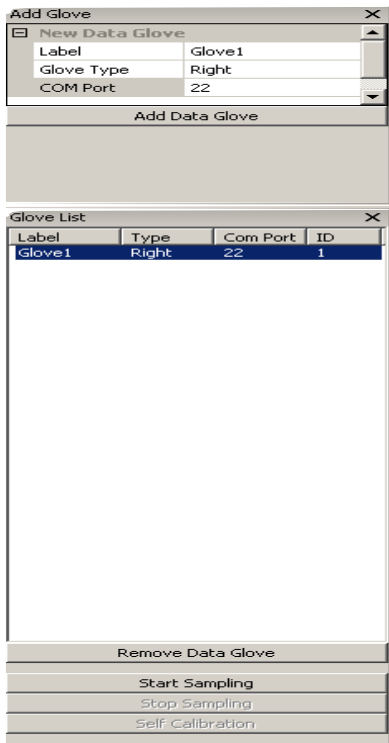


Illustration 1: First launch: no glove are present in the project

Add a glove to the project

In order to add a data glove to the project one must know the COM port associated to the glove. It depends on the communication mode of the glove, if a USB cable it is used then it is possible to know it by watching in Control Panel->Device Manager->Com Port and look for a USB Port communication. If the dataglove communicates via a Bluetooth connection then it is possible to know the associated COM port from the Bluetooth software manager.

Once the COM port has been discovered it is possible to add a data glove from the project from the "Add Glove" panel, placed on the top-left of the software window. Insert the name, the comport number (I.e. 22 if the dataglove is connected to the COM22) and the glove type (left or right), then click "Add Data Glove".



If everything has gone fine, the data glove is added in the Glove List panel.

Start Sampling

Select the already added glove from the Glove list and click “Start Sampling”, the packages coming from the data glove will be elaborated and the information will be shown on the Finger Panel and on the Acceleration Panel.

By clicking on the “Start Calibration” button, the software will automatically update the glove information in order to use all the finger extensions.

To save the project choose Menu->Save Data. The project information will be stored in the C:\\Windows\\Vhand.ini file.

REMARK: the file Vhand.ini saved by the GloveSetup software can be used by the SDK.

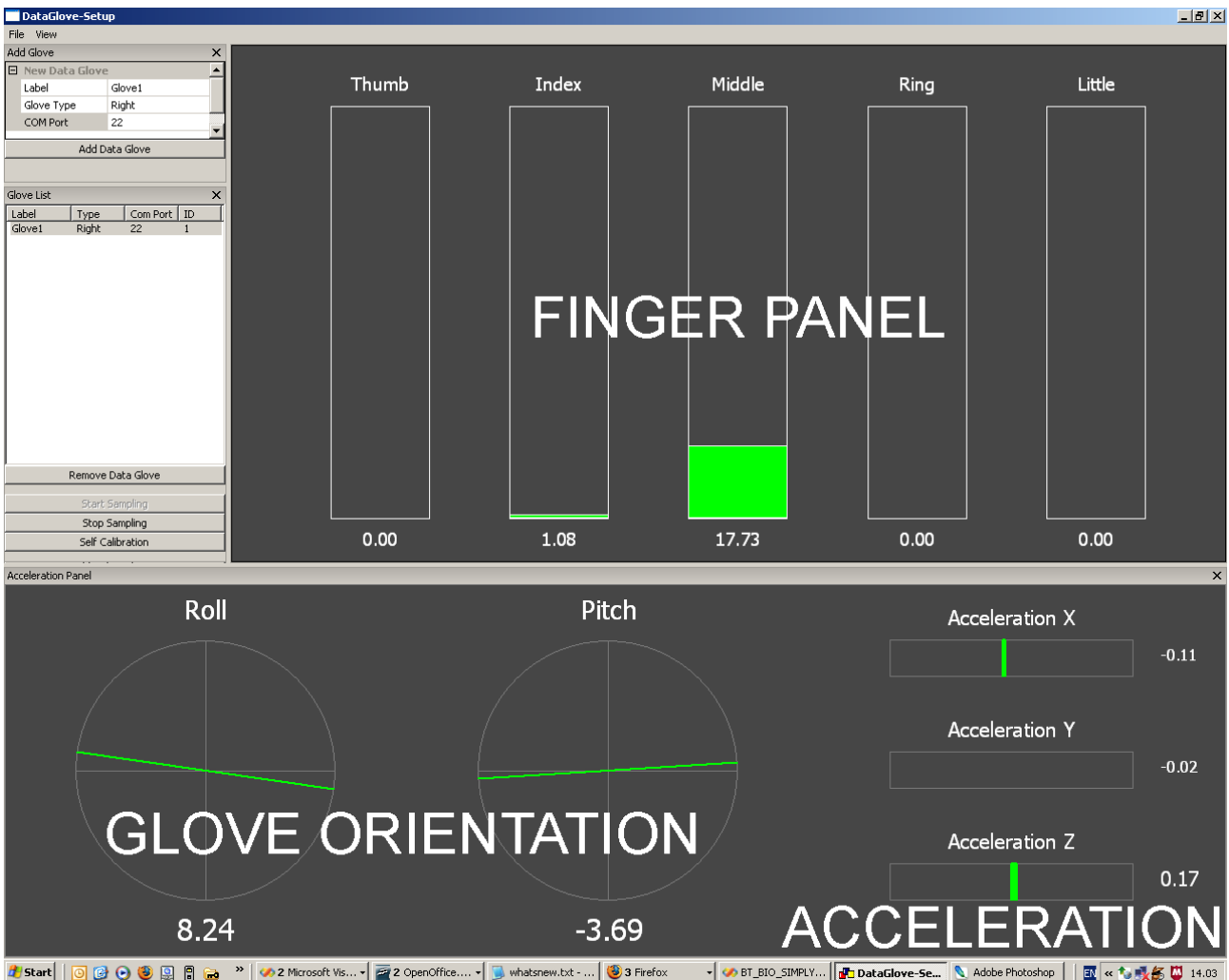


Illustration 2: Running mode: the software is sampling the selected data glove, the relative information are shown on the Acceleration Panel and on the Finger Panel

Further information: contact info@dg-tech.it

DGTech Engineering Solutions, October 2007

www.dg-tech.it