

For 25 years
Up-to-date troubleshooting

25 years Troubleshooting Instructions
Your advantages at a glance

25 Years
SIS | 1984-2009



Service Information System SIS: 25 years of efficient workshop support

The beginning of the information system SIS

Since 1984 - at that time completely innovatory - Bosch has been supplying an aid for troubleshooting: The Service Information system SIS, which was still published on microfiche cards until 1996.

The Service Information System SIS on PC

1996 to 2004 saw the conversion of the Troubleshooting Instructions into a PC-supported system and its integration into the innovative workshop software ESI[tronic].

Intuitive use: The new SIS generation

Since 2004, the Service Information System SIS is linked seamlessly with the workshop hardware and software. Standardized structure, notation and chapter names permit intuitive operation and the trouble-free jump between ECU diagnostics, multimeter measuring functions and the Troubleshooting Instructions.



Transparent technology: Long searches for the correct information in the system are no longer necessary

More efficiency in daily workshop operations

The Service Information System SIS within the ESI[tronic] software provides the mechanic with the Troubleshooting and Repair Instructions for all tasks he currently requires:

- ▶ ECU diagnostics and Troubleshooting Instructions from a single source.
- ▶ Optimum interaction via CAS[plus] as interface.
- ▶ In many cases, greater depth of testing than the one offered by the vehicle manufacturer.
- ▶ Vehicle-specific instructions with "matching" setpoint values.
- ▶ Instructions checked at the vehicle. Advantage: Even manufacturer documentation is corrected.
- ▶ Standardized structure, notation and technical terms.

Inquire at your authorized dealer.



25 years SIS from Bosch:
The Troubleshooting device for successful repair

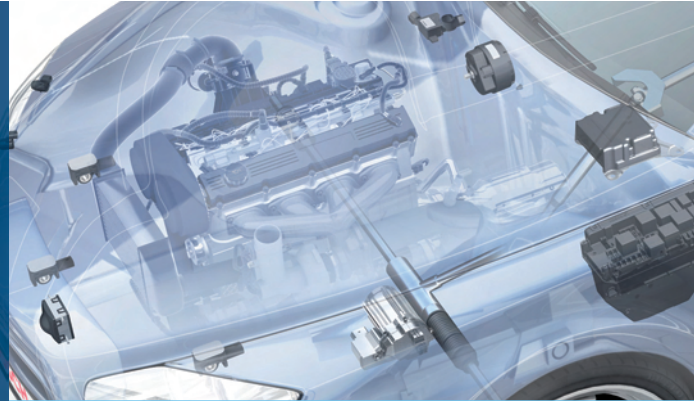
An overview of the most important instruction types

- ▶ Troubleshooting Instructions
- ▶ Troubleshooting information
- ▶ System description
- ▶ Removal and installation instructions
- ▶ Service Information



Bosch Diagnostics			
ESI[tronic] Software	Test Equipment	Service Training	Technical Hotline

Service Information System (SIS): Finding faults reliably



The SIS Troubleshooting Instructions clearly shows you the fastest way to correct a defect

Systematic troubleshooting and repair procedure

The ECU diagnostics allow you to diagnose a fault in the vehicle, but not repair it. This is where the SIS – the Troubleshooting Instructions from Bosch – come in. The guided troubleshooting also includes a rapid overview of how to deal with various fault symptoms in a practical manner.

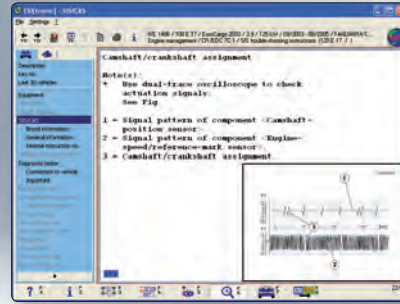
Workshop example 1: "Opel Corsa, Model year 1999"

The ECU diagnostics reports an error in the lambda oxygen sensor. The actual cause – crack in exhaust-gas system upstream of the lambda sensor – was discovered immediately with the SIS. Replacement of the lambda sensor would therefore not have achieved the desired result.

Workshop example 2: "Volkswagen Passat, Model year 2007"

Following cleaning work, the ECU diagnostics indicated an error in the CAN bus. The SIS shows the installation position of the components. The decisive indication of the cause: Water ingress at the connector of the ESP control unit.

SIS, SD and CAS: Perfect interaction



New flexibility: Can jump at any time from ECU diagnostics to troubleshooting

Benefits for the workshop

The SIS from Bosch stores extensive information on possible faults. This serves to localize faults in the vehicle. The SIS also guides you directly through the repair. For the most important vehicle brands and systems.

ECU diagnostics: More than simply fault codes



After "Reading out fault memory" in the ECU diagnostics, the software already links the fault codes to the Troubleshooting Instructions SIS.

CAS[plus] links the Troubleshooting Instructions to diagnostics



The CAS[plus] function guides the mechanic through all test steps and always provides the information and diagnostics functions necessary for repair.

Fast and systematic: Simple way to find faults



"Networked" troubleshooting: Troubleshooting Instructions with detailed fault description can be called up at any time

Troubleshooting made easy

SIS Troubleshooting Instructions show the way to a successful repair. Further information, such as hydraulic, pneumatic and electric connection diagrams, is available anytime.

Effortless tracking of faults

The intuitively operated ESI[tronic] software guides the mechanic step by step through the repair procedure.

Flexible at any time

After your selection unambiguously identifies the vehicle, you easily reach the suitable, vehicle-specific Troubleshooting Instructions.

Directly to the target - without fail

Further navigation is very straightforward: A click on "SIS/CAS" is enough to display all systems on the monitor for which Troubleshooting Instructions are available.

Information, you will find in the Troubleshooting Instructions

- ▶ Safety instructions
- ▶ Functional descriptions
- ▶ Evaluation of the ECU self-diagnosis
- ▶ Description of test steps
- ▶ Setpoint values and signal patterns for components, functions and subsystems
- ▶ Circuit diagrams, assignment of plug connectors, installation position of components
- ▶ Removal and installation instructions.

These systems you check with the Troubleshooting Instructions

Engine management for gasoline and diesel engines, driving safety systems (such as ABS and ESP), airbags, lighting,

brakes, transmission control, comfort and convenience systems (such as air conditioner, etc.), electrical systems (such as starter, alternators, etc.), SIA (resetting the service interval display) and for CAN bus systems. For vehicles with gasoline and diesel engines.

