



SERVICE MANUAL BMG-435WD

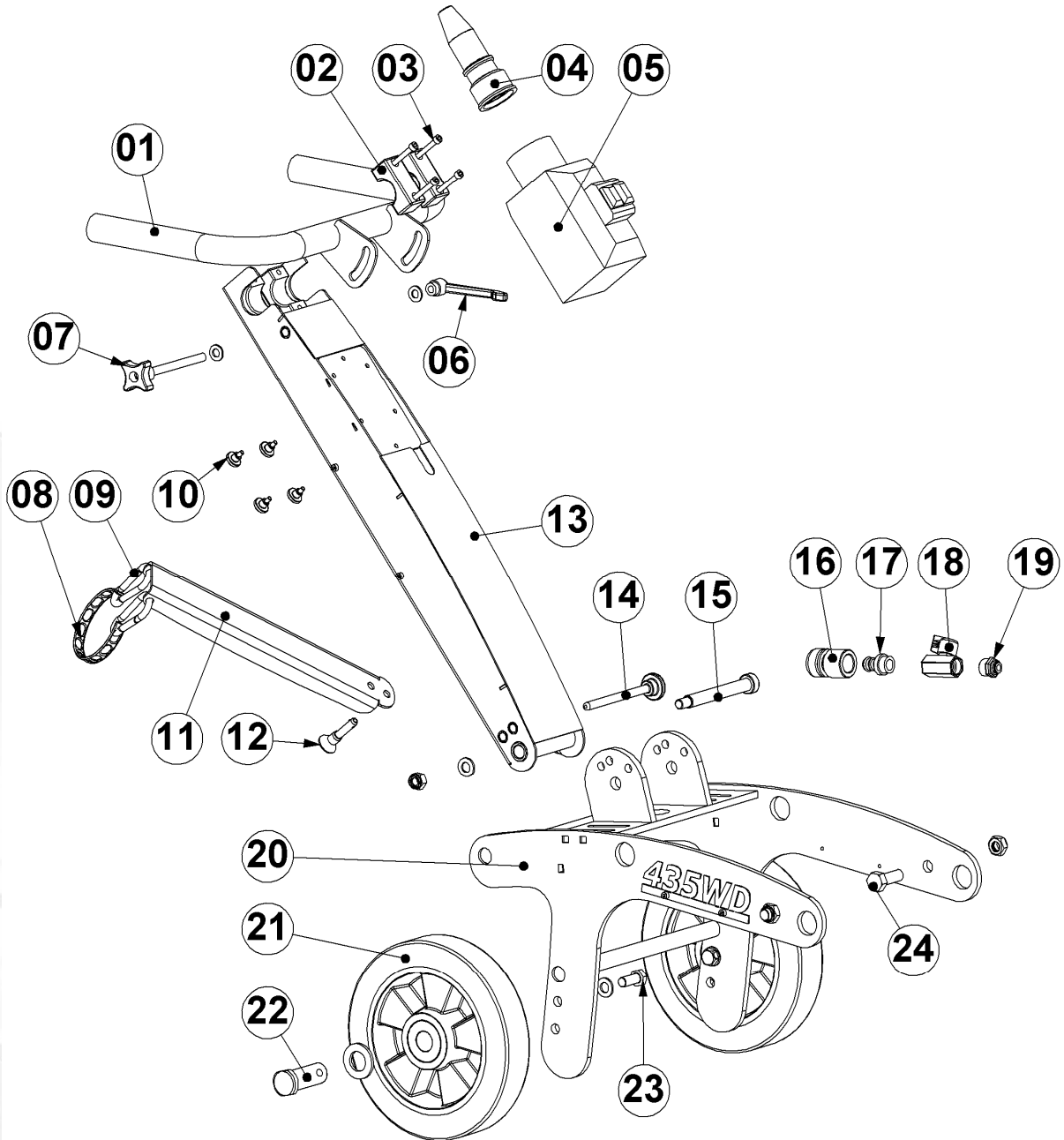
VERSION 2.6

Index

| | |
|--|-----------|
| 1. Spare parts | 03 |
| 2. Electric schedules | |
| Electric circuit diagram E00587-1 230V / 12.9A / 50Hz | 16 |
| Electric circuit diagram E01532110V / 28.0A / 50Hz | 23 |
| Electric circuit diagram E03951400V / 6.0A | 27 |

1. Spare parts

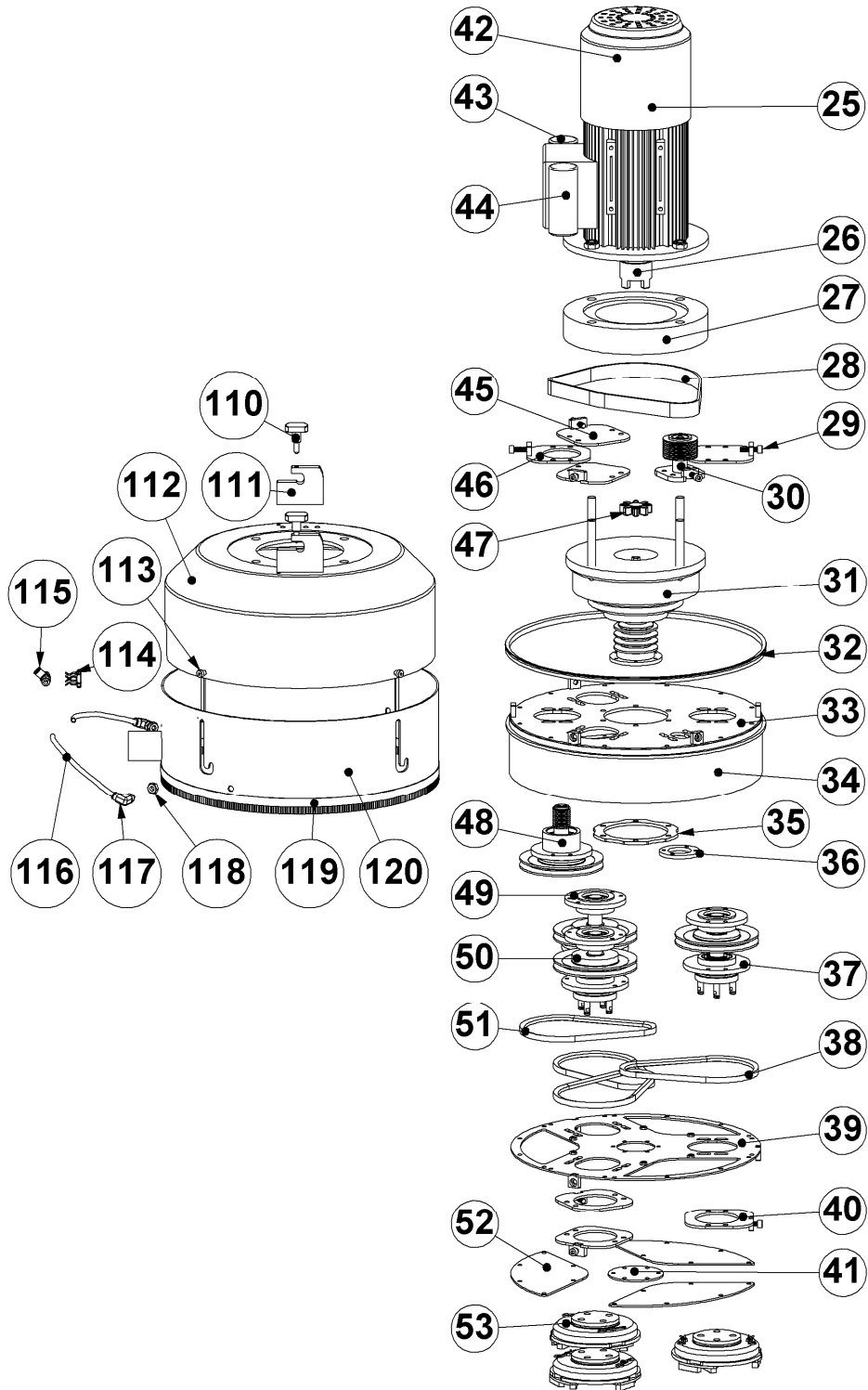
Frame complete





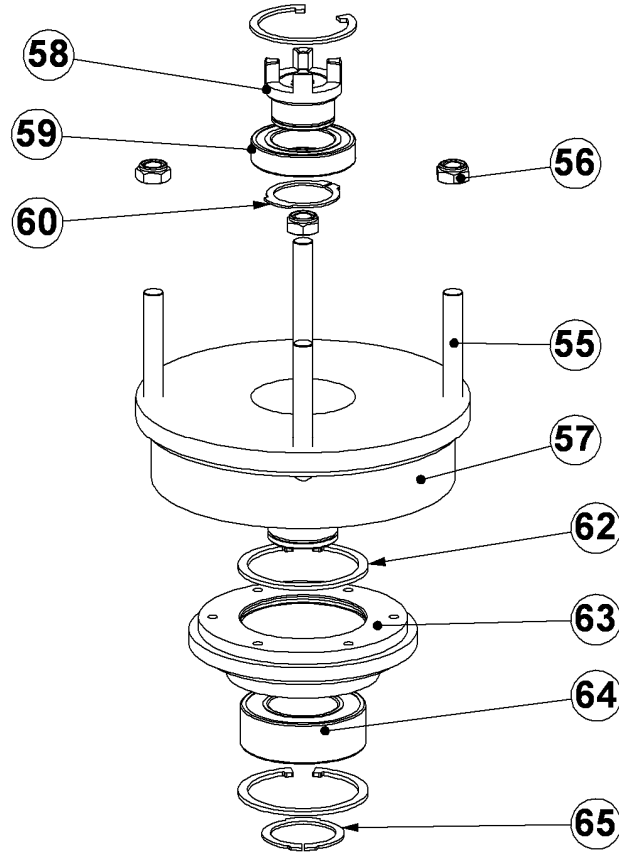
| Item | Part number | Description | Remarks | Qty. |
|------|-------------|---------------------------------|---------|------|
| 1 | E01514-2 | Steer | | 1 |
| 2 | 999-9156 | Pipe clamp (set) | | 2 |
| 3 | BE0191 | M6x50 hexagon socket head screw | DIN 912 | 4 |
| 4 | E01499 | Connector 230V / 50hz | | 1 |
| 5 | E00587-1 | Electro kit 230V / 50Hz | | 1 |
| | E01521 | Electro kit 230V / 60Hz | | 1 |
| | E01532 | Electro kit 110V / 50Hz | | 1 |
| | E03951 | Electro kit 3x400V / 50Hz | | 1 |
| 6 | BE0641 | M10 clamp lever | | 1 |
| 7 | E06860 | Clamping pin steer | | 1 |
| 8 | E07008 | Chain (11links) | | 1 |
| 9 | BE0653 | Hook | | 2 |
| 10 | E06386 | Disc knob M5 | | 4 |
| 11 | E07019 | Swing arm | | 1 |
| 12 | 478198 | Quick release pin | | 1 |
| 13 | E01515-2 | Steer handle | | 1 |
| 14 | BG11751-1 | Handle locking pin | | 1 |
| 15 | BE0640 | M12 hexagon shoulder screw | | 1 |
| 16 | E06286 | Water coupling | | 1 |
| 17 | E06285 | Water hose connection | | 1 |
| 18 | E06282 | Ball valve mini | | 1 |
| 19 | E06279 | Water reducing coupling | | 1 |
| 20 | E01513-2 | Frame 435 | | 1 |
| 21 | E01491 | Wheel | | 2 |
| 22 | BG11765 | Bolt for wheel | | 2 |
| 23 | BE0037 | M12x30 hexagon bolt | DIN 933 | 2 |
| 24 | BE0379 | M14x40 hexagon bolt | DIN 933 | |

Planetary system



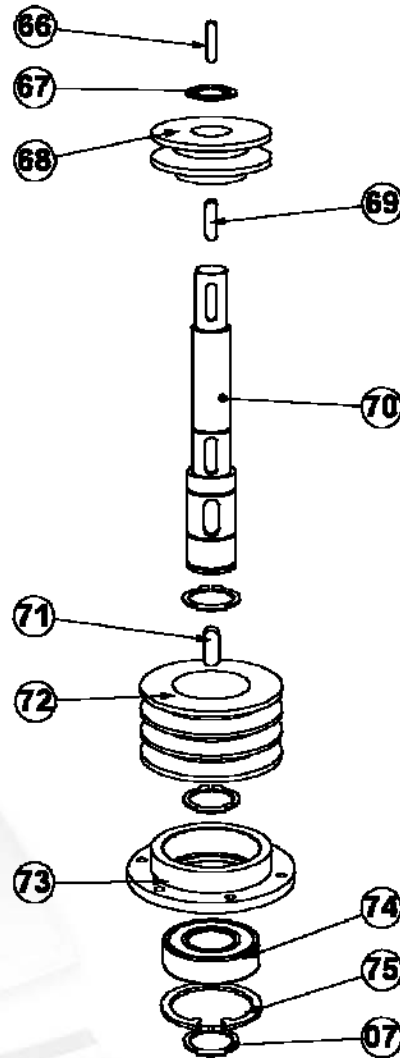
| Item | Part number | Description | Remarks | Qty. |
|------|-------------|-----------------------------|---------|------|
| 25 | E01493 | Motor 230V / 50Hz | | 1 |
| | E01522 | Motor 230V / 60Hz | | 1 |
| | E01525 | Motor 3x400V / 50Hz | | 1 |
| | E01518 | Motor 110V / 50Hz | | 1 |
| 26 | E01483_1 | Upper coupling | | 1 |
| 27 | E01465 | Fill-up block | | 1 |
| 28 | E06195 | Upper belt | | 1 |
| 29 | BE0123 | M8x35 hexagon head cap scr. | DIN912 | 8 |
| 30 | E07028 | Tension pulley | | 1 |
| 31 | E06977 | Centre axle 435 | | 1 |
| 32 | E01494 | V-ring seal | | 1 |
| 33 | E04451 | Housing top plate | | 1 |
| 34 | E01509 | Housing scroll | | 1 |
| 35 | E01503 | Centre ring | | 1 |
| 36 | E01512 | Tension pulley mount ring | | 1 |
| 37 | E07026 | Pulley III | | 1 |
| 38 | E01485 | V-belt long | | 3 |
| 39 | E01510 | Housing bottom plate | | 1 |
| 40 | E01505 | Cover plate bottom | | 3 |
| 41 | E01502 | Centre axle bottom cover | | 1 |
| 42 | E01493/3 | Motor fan cover | | 1 |
| | E01522/4 | Motor fan cover | | 1 |
| | E01493/4 | Motor fan | | |
| | E01522/3 | Motor fan | | |
| 43 | E01493/1 | Start up capacitor | | 1 |
| | E01522/1 | Start up capacitor | | 1 |
| 44 | E01493/2 | Operation capacitor | | 1 |
| | E01522/2 | Operation capacitor | | 1 |
| 45 | E01507 | Cover plate | | 3 |
| 46 | E01506 | Cover plate contra pulley | | 1 |
| 47 | E01483/1 | Coupling star yellow | | 1 |
| 48 | E07027 | Contra pulley | | 1 |
| 49 | E07024 | Pulley I | | 1 |
| 50 | E07025 | Pulley II | | 1 |
| 51 | E01484 | V-belt short | | 1 |
| 52 | E01504 | Check cover | | 3 |
| 53 | | Diamond plate holder | | 3 |
| 110 | E07360 | Disc knob | | 2 |
| 111 | E01473 | Hinge plate | | 2 |
| 112 | E01516-2 | Protection cover | | |
| 113 | BE0655 | Slide bolt | | 4 |
| 114 | E06276 | Pipe clamp | | 2 |
| 115 | E06281 | Water T-coupling | | 1 |
| 116 | E06278 | Water hose | | 1m |
| 117 | E06280 | Water knee coupling | | 2 |
| 118 | E06293 | Nut for knee coupling | | 2 |
| 119 | E07017 | Brush | | 1 |
| 120 | E07016 | Floating shroud | | 1 |

Drive mechanism – E07029



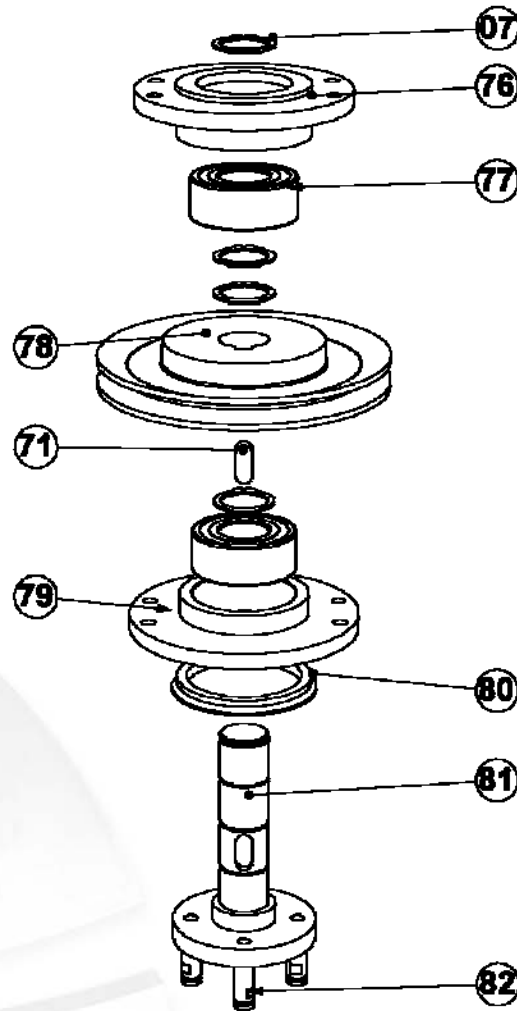
| Item | Part number | Description | Remarks | Qty. |
|------|-------------|---------------------------|---------|------|
| 55 | E03504 | M14x100mm Stud bolt | | 4 |
| | E06181 | M14x71mm Stud bolt (USA) | | 4 |
| 56 | BE0120 | M14 lock nut | DIN985 | 4 |
| 57 | E04450 | Pulley | | 1 |
| 58 | E01483_2 | Bottom coupling | | 1 |
| 59 | E01477 | Bearing | | 1 |
| 60 | BE0124 | Retaining ring Ø45 | DIN471 | 1 |
| 62 | BE0125 | Retaining ring Ø90 | DIN472 | 2 |
| 63 | E01462 | Central bearing house top | | 1 |
| 64 | E01490 | Bearing | | 1 |
| 65 | BE0126 | Retaining ring Ø50 | DIN471 | 1 |

Centre axle – E07030



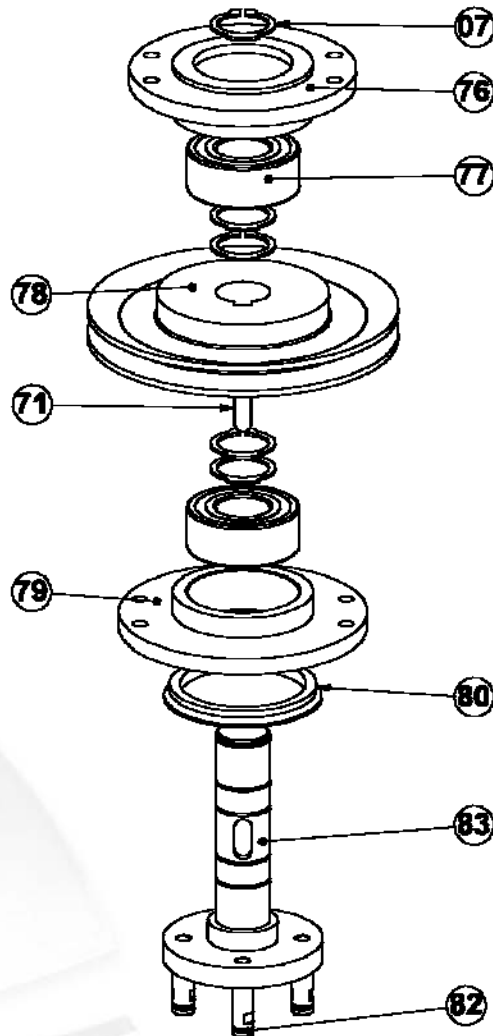
| Item | Part number | Description | Remarks | Qty. |
|------|-------------|------------------------------|----------|------|
| 07 | BE0076 | Retaining ring Ø25 | DIN471 | 3 |
| 66 | BE0108 | Key 5x5x20 | DIN6885A | 1 |
| 67 | BE0074 | Retaining ring Ø20 | DIN471 | 1 |
| 68 | E01487 | V-pulley | | 1 |
| 69 | BE0110 | Key 6x6x20 | DIN6885A | 1 |
| 70 | E01463 | Centre axle | | 1 |
| 71 | BE0109 | Key 8x7x20 | DIN6885A | 1 |
| 72 | E01488 | V-pulley | | 1 |
| 73 | E01461 | Central bearing house bottom | | 1 |
| 74 | 222-2331-E | Bearing | | 1 |
| 75 | BE0077 | Retaining ring Ø52 | DIN472 | 1 |

Pulley I – E07024



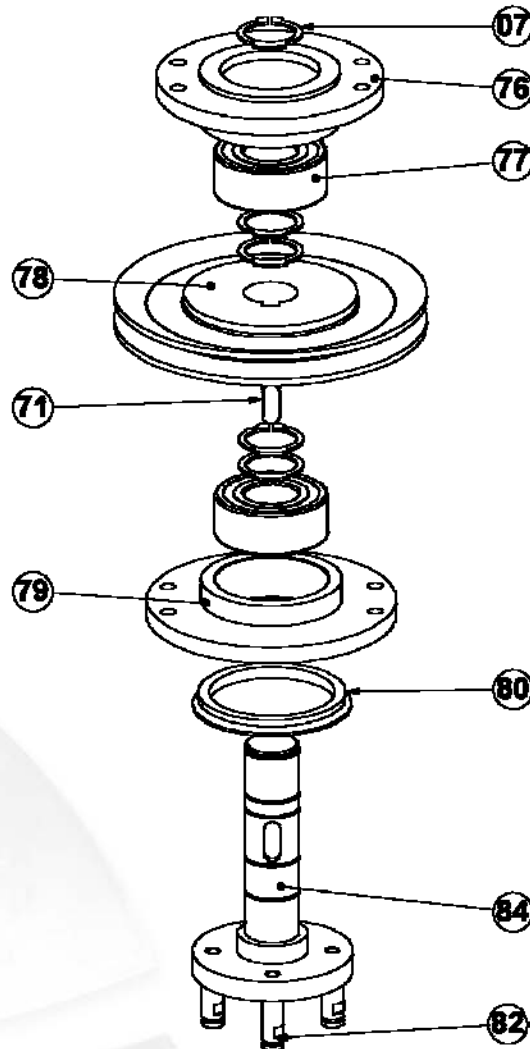
| Item | Part number | Description | Remarks | Qty. |
|------|-------------|----------------------|----------|------|
| 07 | BE0076 | Retaining ring Ø25 | DIN471 | 4 |
| 71 | BE0109 | Key 8x7x20 | DIN6885A | 1 |
| 76 | E01460 | Bearing house top | | 1 |
| 77 | E03245 | Bearing | | 2 |
| 78 | E01486 | V-pulley | | 1 |
| 79 | E01458 | Bearing house bottom | | 1 |
| 80 | E01489 | V-ring seal | | 1 |
| 81 | E01468 | Pulley axle I | | 1 |
| 82 | E01474 | Flex pin | | 4 |

Pulley II – E07025



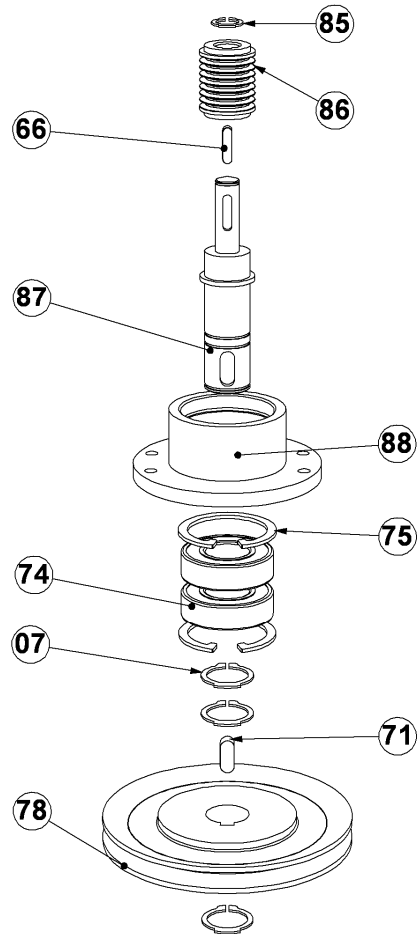
| Item | Part number | Description | Remarks | Qty. |
|------|-------------|----------------------|----------|------|
| 07 | BE0076 | Retaining ring Ø25 | DIN471 | 4 |
| 71 | BE0109 | Key 8x7x20 | DIN6885A | 1 |
| 76 | E01460 | Bearing house top | | 1 |
| 77 | E03245 | Bearing | | 2 |
| 78 | E01486 | V-pulley | | 1 |
| 79 | E01458 | Bearing house bottom | | 1 |
| 80 | E01489 | V-ring seal | | 1 |
| 83 | E01469 | Pulley axle II | | 1 |
| 82 | E01474 | Flex pin | | 4 |

Pulley III – E07026



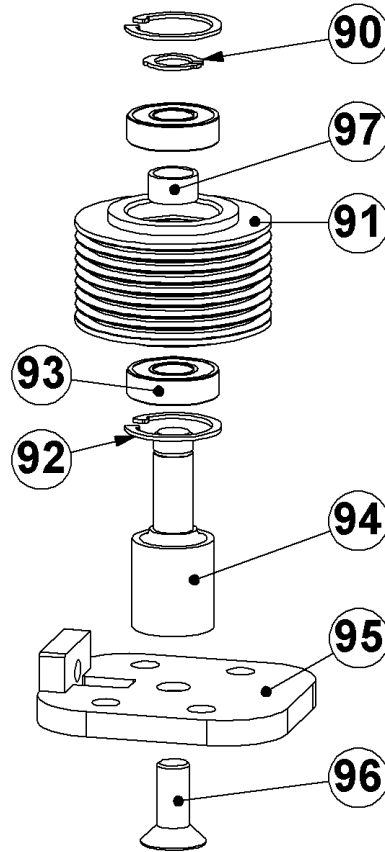
| Item | Part number | Description | Remarks | Qty. |
|------|-------------|----------------------|----------|------|
| 07 | BE0076 | Retaining ring Ø25 | DIN471 | 4 |
| 71 | BE0109 | Key 8x7x20 | DIN6885A | 1 |
| 76 | E01460 | Bearing house top | | 1 |
| 77 | E03245 | Bearing | | 2 |
| 78 | E01486 | V-pulley | | 1 |
| 79 | E01458 | Bearing house bottom | | 1 |
| 80 | E01489 | V-ring seal | | 1 |
| 84 | E01470 | Pulley axle III | | 1 |
| 82 | E01474 | Flex pin | | 4 |

Contra pulley - E07027



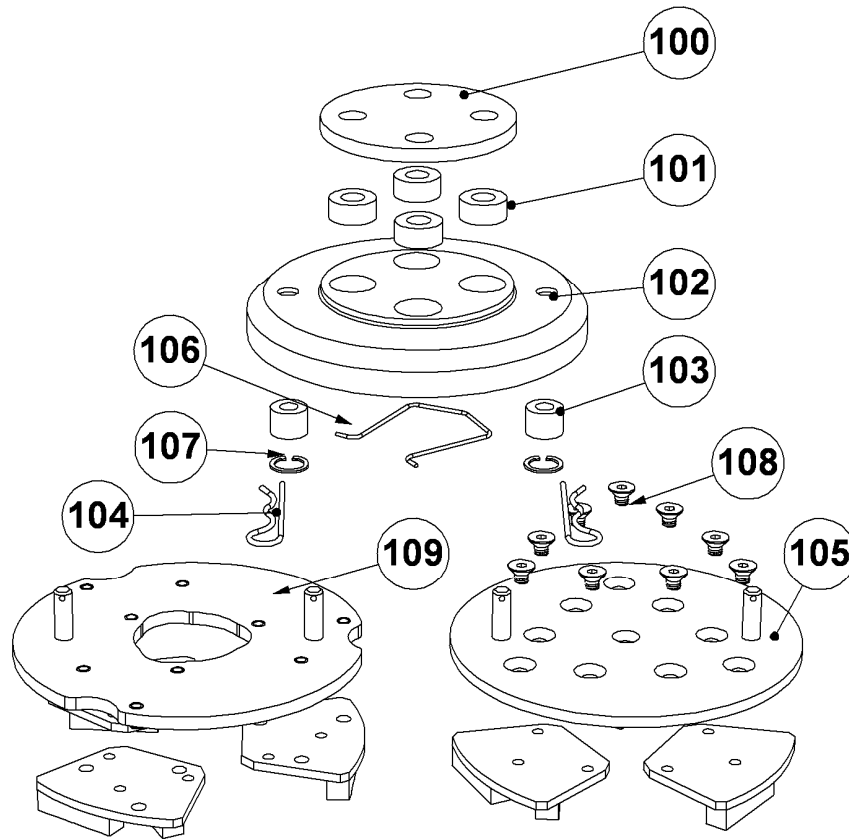
| Item | Part number | Description | Remarks | Qty. |
|------|-------------|-----------------------------|----------|------|
| 07 | BE0076 | Retaining ring Ø25 | DIN471 | 3 |
| 66 | BE0108 | Key 5x5x20 | DIN6885A | 1 |
| 71 | BE0109 | Key 8x7x20 | DIN6885A | 1 |
| 74 | 222-2331-E | Bearing | | 2 |
| 75 | BE0077 | Retaining ring Ø52 | DIN472 | 2 |
| 78 | E01486 | V-pulley | | 1 |
| 85 | BE0127 | Retaining ring Ø13 | DIN471 | 1 |
| 86 | E06050 | Pulley | | 1 |
| 87 | E01464 | Contra pulley axle | | 1 |
| 88 | E01459 | Bearing house contra pulley | | 1 |

Tension pulley – E07028



| Item | Part number | Description | Remarks | Qty. |
|------|-------------|------------------------------|---------|------|
| 90 | BE0129 | Retaining ring Ø12 | DIN471 | 1 |
| 91 | E06051 | Pulley | | 1 |
| 92 | BE0128 | Retaining ring Ø28 | DIN472 | 2 |
| 93 | E06203 | Bearing | | 2 |
| 94 | E06054 | Tension pulley axle | | 1 |
| 95 | E01508 | Cover plate tension pulley | | 1 |
| 96 | BE0130 | M10x25 Countersunk head scr. | DIN7991 | 1 |
| 97 | E06421 | Bush | | 1 |

Diamond plate holder (3x)



| Item | Part number | Description | Remarks | Qty. |
|------|-------------|-------------------------------------|---------|------|
| 100 | E01476 | Flex disc rubber plate | | 1 |
| 101 | E03292 | Flex disc rubber | | 4 |
| 102 | E01472 | Flex disc | | 1 |
| 103 | E03293 | Diamond disc rubber | | 2 |
| 104 | BE0072 | Spring cotter | | 2 |
| 105 | BG300212 | Adapter plate for wings | | 1 |
| | BG300213 | Adapter plate for polish dots | | 1 |
| | BG300207 | Adapter plate for granite / marbles | | 1 |
| 106 | E03749 | Locking spring | | 1 |
| 107 | BE0103 | Retaining ring Ø16 | DIN472 | 2 |
| 108 | BE0131 | M6x8 Countersunk head scr. | DIN7991 | 9 |
| 109 | E07155 | DIAMAG 155 adapter plate | | 1 |



Wings

| Part number | Description | Remarks | Qty. |
|--------------|---------------------------------|----------|------|
| BG707301 | Wing red box 9 pieces 18/20 | | 1 |
| BG707302 | Wing red box 9 pieces 30/40 | | 1 |
| BG707303 | Wing red box 9 pieces 60/80 | | 1 |
| BG707304 | Wing red box 9 pieces 120/150 | | 1 |
| BG707311 | Wing green box 9 pieces 18/20 | | 1 |
| BG707312 | Wing green box 9 pieces 30/40 | | 1 |
| BG707313 | Wing green box 9 pieces 60/80 | | 1 |
| BG707314 | Wing green box 9 pieces 120/150 | | 1 |
| BG707321 | Wing blue box 9 pieces 18/20 | | 1 |
| BG707322 | Wing blue box 9 pieces 30/40 | | 1 |
| BG200997/SET | Wing PCD split | Set of 9 | 1 |
| BG200999/SET | Wing PCD 2 x ¼ | Set of 9 | 1 |

Polishing dots

| Part number | Description | Remarks | Qty. |
|-------------|------------------------------------|----------|------|
| BG200982 | Dry polish dot black #100 | | 9 |
| BG200983 | Dry polish dot blue #220 | | 9 |
| BG200984 | Dry polish dot red #400 | | 9 |
| BG200985 | Dry polish dot white #800 | | 9 |
| BG200986 | Dry polish dot yellow #1500 | | 9 |
| BG200987 | Dry polish dot green #3000 | | 9 |
| BG7110050 | Diamag wet polish dot orange #50 | Set of 9 | 1 |
| BG7110100 | Diamag wet polish dot black #100 | Set of 9 | 1 |
| BG7110200 | Diamag dry polish dot blue #200 | Set of 9 | 1 |
| BG7110400 | Diamag dry polish dot red #400 | Set of 9 | 1 |
| BG7110800 | Diamag wet polish dot white #800 | Set of 9 | 1 |
| BG7111800 | Diamag wet polish dot yellow #1800 | Set of 9 | 1 |
| BG7113000 | Diamag wet polish dot green #3000 | Set of 9 | 1 |



2. Electric schedules

Electric circuit diagram E00587-1 230V / 12.9A / 50Hz

| | | | | | | | | | |
|--|---|---|---|---|---|---|---|--|-----------------------|
| 0 | 1 | 2 | 3 | 4 | 5 | 6 | 7 | 8 | 9 |
| <div style="border: 1px solid black; padding: 5px; margin-bottom: 10px;">Particulars:</div> <div style="display: flex; justify-content: space-between;"> <div style="width: 45%;"> <p>PROJECT Client : BLASTRAC BV Name : E00587-1</p> </div> <div style="width: 45%;"> <p>SUPPLIER Order number : Supplier : BLASTRAC BV Contact : Telephone : +31(0)30-6018866 Telefax : +31(0)30-6018333 Email :</p> </div> </div> <div style="margin-top: 10px;"> <p>DATA Arch.number : PJ07.03297T1CF Calc.number : Status : Certified Final</p> </div> <div style="margin-top: 10px;"> <p>Start of project : 4-7-2007 Latest change : 3-7-2008 (Rosterman)</p> </div> <div style="margin-top: 10px; text-align: right;"> <p>Highest page number : 12 Number of pages : 7</p> </div> | | | | | | | | | |
| Frontpage | | | | | | | | Archv. : PJ07.03297T1CF Drawv. : PJ07.03297T1CF | Pages : 7 Page : 1 |



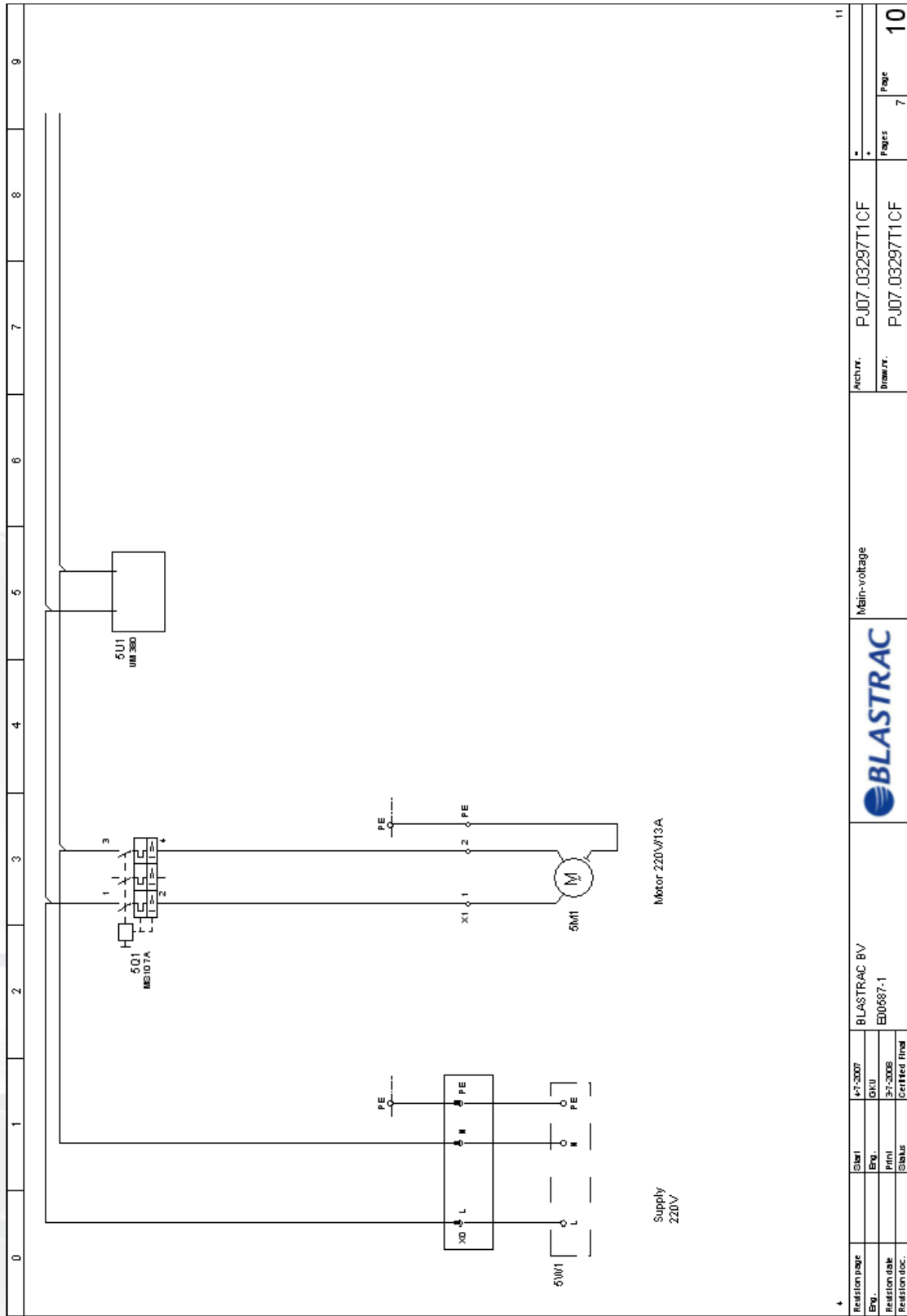
Table of contents

| Page | Summary | Engineer | Latest change | By |
|------|-------------------|----------|---------------|-----|
| 1 | Summary | | | |
| 2 | Frontpage | RJO | 04.07.2007 | GKU |
| 3 | Contents | RJO | 04.07.2007 | GKU |
| 4 | Contents | GKU | 04.07.2007 | GKU |
| 10 | Explanations | RJO | 04.07.2007 | GKU |
| 11 | Main-voltage | GKU | 04.07.2007 | GKU |
| 12 | Plug 30 | GKU | 04.07.2007 | GKU |
| | Terminal strip X1 | GKU | 04.07.2007 | GKU |
| | | | | |
| | | | | |
| | | | | |
| | | | | |
| | | | | |
| | | | | |
| | | | | |
| | | | | |
| | | | | |
| | | | | |
| | | | | |
| | | | | |
| | | | | |
| | | | | |

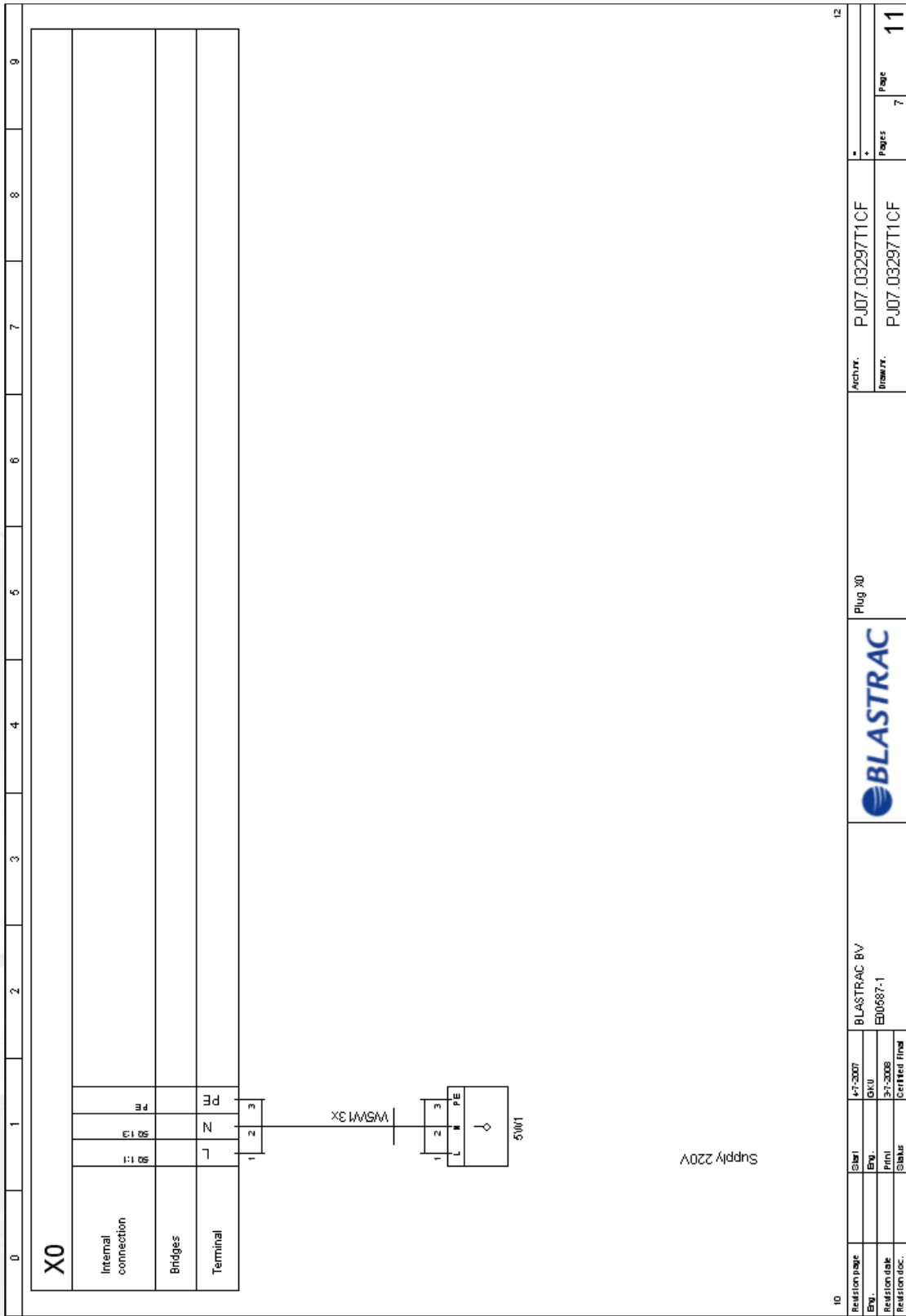
| | |
|---|--|
| | Contents |
| BLASTRAC BV E00687-1 | Archv. PJO7.03297T1CF Drawv. PJO7.03297T1CF |
| Revision page Eng. M7-2007 RJO | * * Pages 7 |
| Revision date Revision doc. | Page 2 |
| 31-2006 Certified final | |

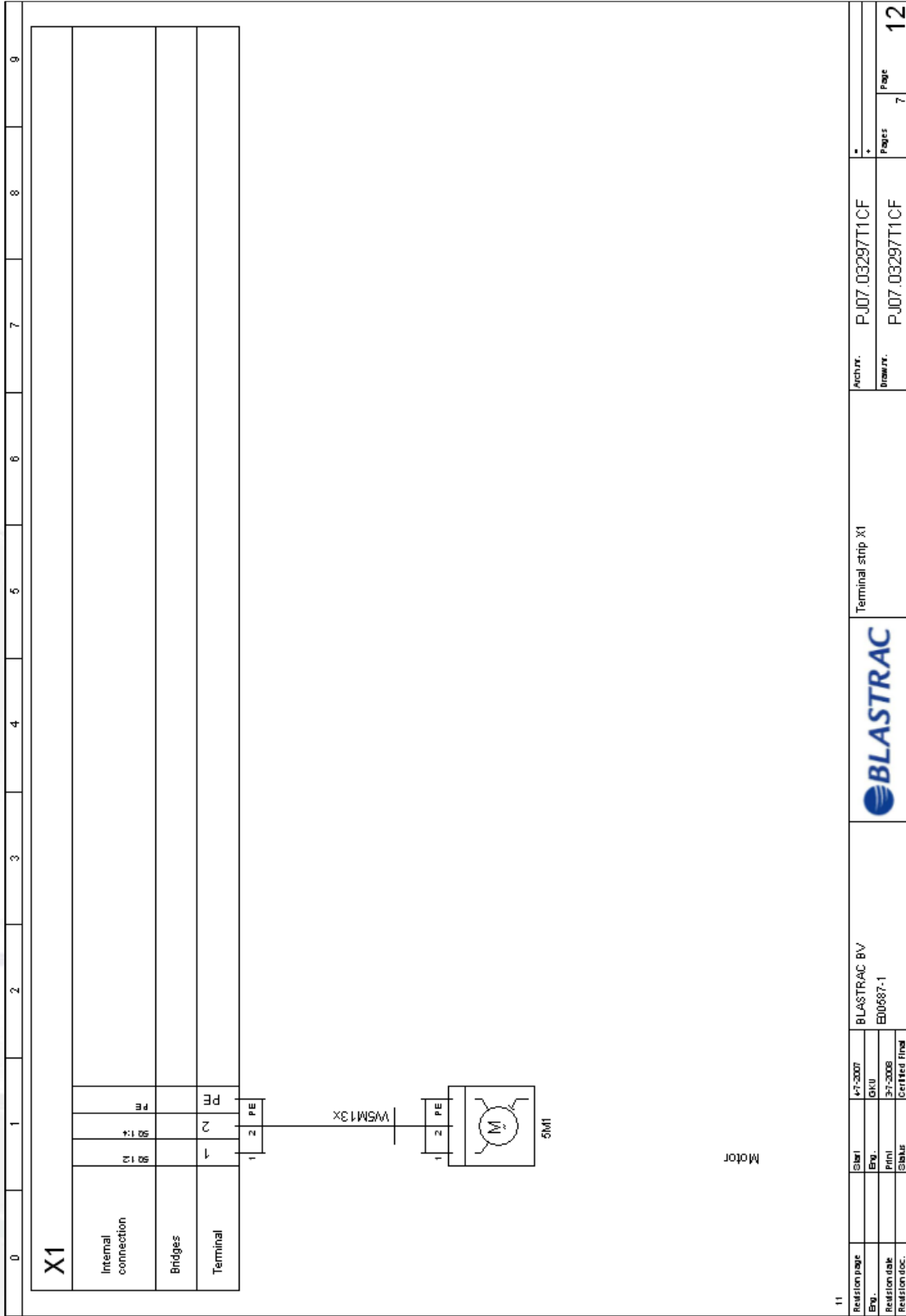


| | | | | | | | | | | | | | | | | | | | | | | | | | | | | | | | | | | | | | |
|---|--------|-----------------|-------------|---------|----------------|----|---|---|---|---------------|-------|----------|-------------|---------|----------------|----|------|------|------|----------|---------|----------------|---|---------------|-------|----------|--|-------|--|---|---------------|--------|-----------------|--|------|--|---|
| 0 | 1 | 2 | 3 | 4 | 5 | 6 | 7 | 8 | 9 | | | | | | | | | | | | | | | | | | | | | | | | | | | | |
| <p>Wire color:</p> <p>Main-voltage:</p> <p>L1 -Black</p> <p>L2 -Black</p> <p>L3 -Black</p> <p>PE / PE -Yellow / Green</p> | | | | | | | | | | | | | | | | | | | | | | | | | | | | | | | | | | | | | |
| <p>Symbol code explanation:</p> <p>DP 5 Q 1</p> <p>DP: Consecutive numbering</p> <p>5: Symbol letter</p> <p>Q: Page number</p> <p>1: Group (in case used)</p> | | | | | | | | | | | | | | | | | | | | | | | | | | | | | | | | | | | | | |
| <p>Archive number explanation:</p> <p>PJ01.01234T1DR</p> <p>PJ: Status*</p> <p>01: DR: Draft</p> <p>01: FA: For approval</p> <p>234: CF: Certified final</p> <p>T: Serial number</p> <p>1: Archive number</p> | | | | | | | | | | | | | | | | | | | | | | | | | | | | | | | | | | | | | |
| <p>* Status DR: Draft FA: For approval CF: Certified final</p> | | | | | | | | | | | | | | | | | | | | | | | | | | | | | | | | | | | | | |
| <p>3</p> <table border="1"> <tr> <td>Revision page</td> <td>Start</td> <td>4-7-2007</td> <td>BLASTRAC BV</td> <td>Archiv.</td> <td>PJ07.03297T1CF</td> <td>10</td> </tr> <tr> <td>Rev.</td> <td>End.</td> <td>Rev.</td> <td>ED0687-1</td> <td>Draw.n.</td> <td>PJ07.03297T1CF</td> <td>7</td> </tr> <tr> <td>Revision date</td> <td>Final</td> <td>2-7-2008</td> <td></td> <td>Pages</td> <td></td> <td>4</td> </tr> <tr> <td>Revision doc.</td> <td>Status</td> <td>Certified final</td> <td></td> <td>Page</td> <td></td> <td>4</td> </tr> </table> | | | | | | | | | | Revision page | Start | 4-7-2007 | BLASTRAC BV | Archiv. | PJ07.03297T1CF | 10 | Rev. | End. | Rev. | ED0687-1 | Draw.n. | PJ07.03297T1CF | 7 | Revision date | Final | 2-7-2008 | | Pages | | 4 | Revision doc. | Status | Certified final | | Page | | 4 |
| Revision page | Start | 4-7-2007 | BLASTRAC BV | Archiv. | PJ07.03297T1CF | 10 | | | | | | | | | | | | | | | | | | | | | | | | | | | | | | | |
| Rev. | End. | Rev. | ED0687-1 | Draw.n. | PJ07.03297T1CF | 7 | | | | | | | | | | | | | | | | | | | | | | | | | | | | | | | |
| Revision date | Final | 2-7-2008 | | Pages | | 4 | | | | | | | | | | | | | | | | | | | | | | | | | | | | | | | |
| Revision doc. | Status | Certified final | | Page | | 4 | | | | | | | | | | | | | | | | | | | | | | | | | | | | | | | |



| | | | | | | | |
|----------------|---------|-----------------|-------------|--------------|--------|----------------|------|
| Revision page | 5001 | 47-2007 | BLASTRAC BV | Main-voltage | Archv. | PJ07.03297T1CF | 11 |
| Eng. | Eng. | GW | E004687-1 | | Drawn | PJ07.03297T1CF | 7 |
| Revision date | 31-2008 | Certified final | | | | | Page |
| Revision desc. | | | | | | | 10 |





| | | | | | | | | | |
|----|---------------|------|-----------------|-------------|-------------------|---------|----------------|------|----|
| 11 | Relation page | SIB1 | 47-3007 | BLASTRAC BV | Terminal strip X1 | Archiv. | P:07.03297T1CF | Page | 7 |
| | Eq. | | 0XU | E00487-1 | | Draw. | P:07.03297T1CF | | 12 |
| | Relation date | | 31-3008 | | | | | | |
| | Relation doc. | | certified final | | | | | | |



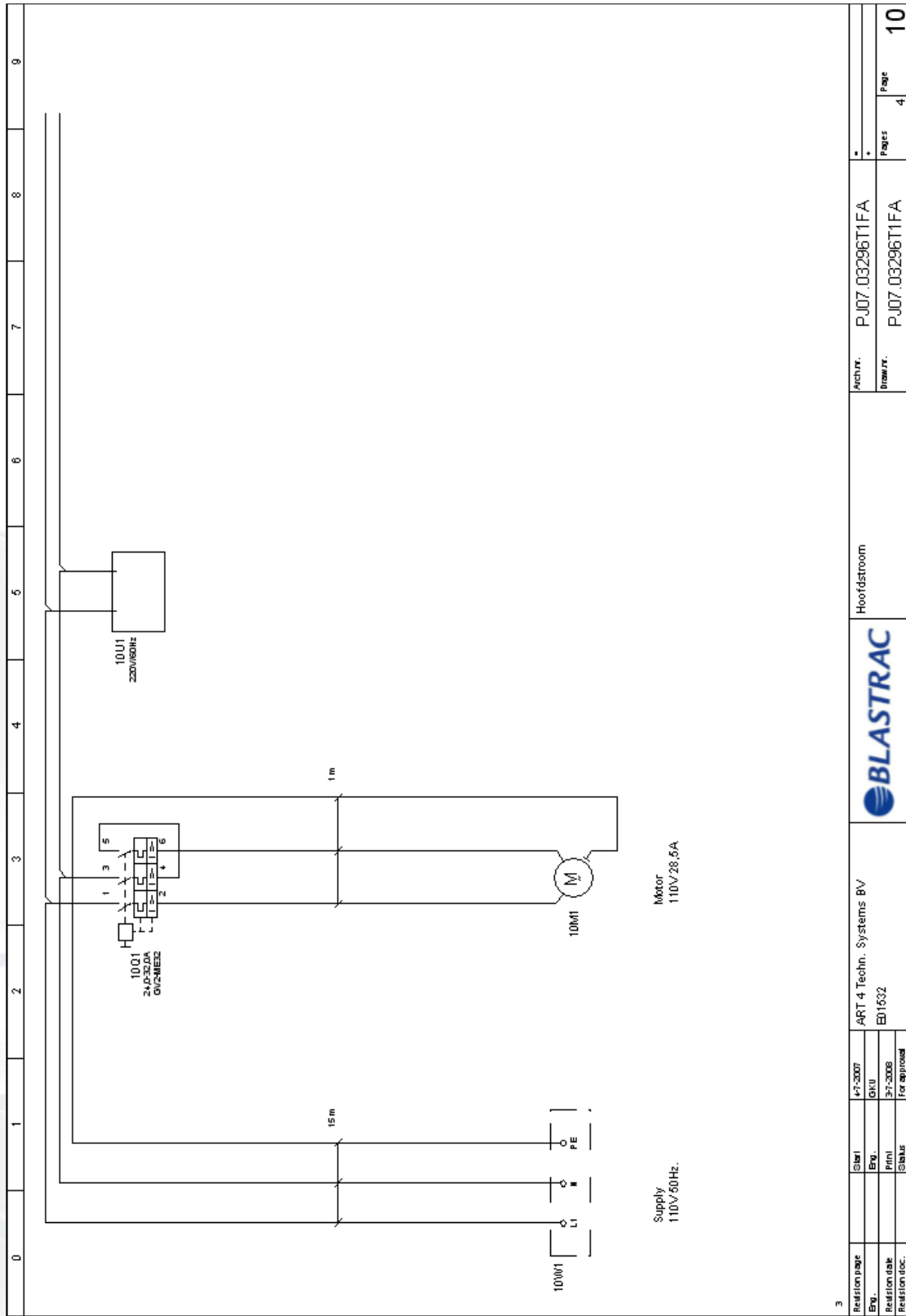
Electric circuit diagram E01532

110V / 28.0A / 50Hz

| | | | | | | | | | | | | | | | | | | | | | | | | | | | | | | | | | | | | | | | |
|---|----------------|---------------|------|------|--|---------------|------|------|------|---------------|------|------|------|--|--|----------|-----|----------|-----|--|--------------|--|--|-------------------------|--|--------|--|---|--|------------|--|--------|----------------|--------|----------------|-------|---|------|---|
| 0 | 1 | 2 | 3 | 4 | 5 | 6 | 7 | 8 | 9 | | | | | | | | | | | | | | | | | | | | | | | | | | | | | | |
| Particulars: | | | | | | | | | | | | | | | | | | | | | | | | | | | | | | | | | | | | | | | |
| <p>PROJECT Client : Name : E01532</p> | | | | | <p>Supplier : ART 4 Techn. Systems BV Contact : Mr. R wld Grint Telephone : +31(0)35-5822468 Telefax : +31(0)35-6424860 Email : rwdgrint@art4.nl</p> | | | | | | | | | | | | | | | | | | | | | | | | | | | | | | | | | | |
| <p>SUPPLIER Draw.number : PJ07.03296T1FA Order number :</p> | | | | | <p>Highest page number : 10 Number of pages : 4</p> | | | | | | | | | | | | | | | | | | | | | | | | | | | | | | | | | | |
| <p>DATA Arch.number : PJ07.03296T1FA Calc. number : Status : For approval</p> | | | | | <p>Start of project : 4-7-2007 Latest change : 3-7-2008 (Rkostonman</p> | | | | | | | | | | | | | | | | | | | | | | | | | | | | | | | | | | |
| <table border="1"> <tr> <td>Revision date</td> <td>Rev.</td> <td>Rev.</td> <td>Rev.</td> </tr> <tr> <td>Revision date</td> <td>Rev.</td> <td>Rev.</td> <td>Rev.</td> </tr> <tr> <td>Revision date</td> <td>Rev.</td> <td>Rev.</td> <td>Rev.</td> </tr> </table> | | Revision date | Rev. | Rev. | Rev. | Revision date | Rev. | Rev. | Rev. | Revision date | Rev. | Rev. | Rev. | <table border="1"> <tr> <td>4-7-2007</td> <td>010</td> </tr> <tr> <td>3-7-2008</td> <td>011</td> </tr> <tr> <td></td> <td>For approval</td> </tr> </table> | | 4-7-2007 | 010 | 3-7-2008 | 011 | | For approval | <table border="1"> <tr> <td>ART 4 Techn. Systems BV</td> <td></td> </tr> <tr> <td>E01532</td> <td></td> </tr> </table> | | ART 4 Techn. Systems BV | | E01532 | | <table border="1"> <tr> <td>Front page</td> <td></td> </tr> <tr> <td>Arch.:</td> <td>PJ07.03296T1FA</td> </tr> <tr> <td>Draw.:</td> <td>PJ07.03296T1FA</td> </tr> <tr> <td>Pages</td> <td>4</td> </tr> <tr> <td>Page</td> <td>1</td> </tr> </table> | | Front page | | Arch.: | PJ07.03296T1FA | Draw.: | PJ07.03296T1FA | Pages | 4 | Page | 1 |
| Revision date | Rev. | Rev. | Rev. | | | | | | | | | | | | | | | | | | | | | | | | | | | | | | | | | | | | |
| Revision date | Rev. | Rev. | Rev. | | | | | | | | | | | | | | | | | | | | | | | | | | | | | | | | | | | | |
| Revision date | Rev. | Rev. | Rev. | | | | | | | | | | | | | | | | | | | | | | | | | | | | | | | | | | | | |
| 4-7-2007 | 010 | | | | | | | | | | | | | | | | | | | | | | | | | | | | | | | | | | | | | | |
| 3-7-2008 | 011 | | | | | | | | | | | | | | | | | | | | | | | | | | | | | | | | | | | | | | |
| | For approval | | | | | | | | | | | | | | | | | | | | | | | | | | | | | | | | | | | | | | |
| ART 4 Techn. Systems BV | | | | | | | | | | | | | | | | | | | | | | | | | | | | | | | | | | | | | | | |
| E01532 | | | | | | | | | | | | | | | | | | | | | | | | | | | | | | | | | | | | | | | |
| Front page | | | | | | | | | | | | | | | | | | | | | | | | | | | | | | | | | | | | | | | |
| Arch.: | PJ07.03296T1FA | | | | | | | | | | | | | | | | | | | | | | | | | | | | | | | | | | | | | | |
| Draw.: | PJ07.03296T1FA | | | | | | | | | | | | | | | | | | | | | | | | | | | | | | | | | | | | | | |
| Pages | 4 | | | | | | | | | | | | | | | | | | | | | | | | | | | | | | | | | | | | | | |
| Page | 1 | | | | | | | | | | | | | | | | | | | | | | | | | | | | | | | | | | | | | | |



| | | | | | | | | | | | | | | | | | | | | | | | | | | | | | | | | | | | | | | | | | | | | | | | | | |
|---|--------|--------------|-------------------------|---------|----------------|---|------|---|---|---------------|-------|---------|-------------------------|---------|----------------|---|--|--|--|------|------|-----|--------|--------|----------------|---|--|--|--|---------------|-------|---------|--|--|--|--|------|---|---|----------------|--------|--------------|--|--|--|--|--|--|--|
| 0 | 1 | 2 | 3 | 4 | 5 | 6 | 7 | 8 | 9 | | | | | | | | | | | | | | | | | | | | | | | | | | | | | | | | | | | | | | | | |
| <p>Wire color:</p> <p>Main-voltage:</p> <p>L1 -Black L2 -Black L3 -Black N -Light blue PE / PE -Yellow / Green</p> <p>Control-voltage alternating-voltage (AC)</p> <p>Phase Hook-up wire -Red Zero -Red -Violet</p> <p>Control-voltage direct-voltage (DC)</p> <p>(+) -Dark blue Hook-up wire -Dark blue (-) -Grey</p> <p>Potential free and stranger-voltage:</p> <p>Potential free -Orange Test lead -White</p> | | | | | | | | | | | | | | | | | | | | | | | | | | | | | | | | | | | | | | | | | | | | | | | | | |
| <p>Symbol code explanation:</p> <p>DP 5 Q 1</p> <p>DP: Consecutive numbering 5: Symbol letter Q: Page number 1: Group (in case used)</p> | | | | | | | | | | | | | | | | | | | | | | | | | | | | | | | | | | | | | | | | | | | | | | | | | |
| <p>Archive number explanation:</p> <p>PJ01.01234T1DR</p> <p>PJ: Status* 01: Serial number 01234: Archive number T: DR: Draft 1: FA: For approval DR: Draft FA: For approval CF: Certified final</p> | | | | | | | | | | | | | | | | | | | | | | | | | | | | | | | | | | | | | | | | | | | | | | | | | |
| <p>Table Headers:</p> <table border="1"> <tr> <td>Revision page</td> <td>Start</td> <td>47-2007</td> <td>ART 4 Techn. Systems BV</td> <td>Archiv.</td> <td>PJ07_03296T1FA</td> <td>*</td> <td></td> <td></td> <td></td> </tr> <tr> <td>Fig.</td> <td>Eng.</td> <td>DAU</td> <td>E01632</td> <td>Inwrrr</td> <td>PJ07_03296T1FA</td> <td>*</td> <td></td> <td></td> <td></td> </tr> <tr> <td>Revision date</td> <td>Print</td> <td>31-2008</td> <td></td> <td></td> <td></td> <td></td> <td>Page</td> <td>4</td> <td>3</td> </tr> <tr> <td>Revision desc.</td> <td>Status</td> <td>For approval</td> <td></td> <td></td> <td></td> <td></td> <td></td> <td></td> <td></td> </tr> </table> | | | | | | | | | | Revision page | Start | 47-2007 | ART 4 Techn. Systems BV | Archiv. | PJ07_03296T1FA | * | | | | Fig. | Eng. | DAU | E01632 | Inwrrr | PJ07_03296T1FA | * | | | | Revision date | Print | 31-2008 | | | | | Page | 4 | 3 | Revision desc. | Status | For approval | | | | | | | |
| Revision page | Start | 47-2007 | ART 4 Techn. Systems BV | Archiv. | PJ07_03296T1FA | * | | | | | | | | | | | | | | | | | | | | | | | | | | | | | | | | | | | | | | | | | | | |
| Fig. | Eng. | DAU | E01632 | Inwrrr | PJ07_03296T1FA | * | | | | | | | | | | | | | | | | | | | | | | | | | | | | | | | | | | | | | | | | | | | |
| Revision date | Print | 31-2008 | | | | | Page | 4 | 3 | | | | | | | | | | | | | | | | | | | | | | | | | | | | | | | | | | | | | | | | |
| Revision desc. | Status | For approval | | | | | | | | | | | | | | | | | | | | | | | | | | | | | | | | | | | | | | | | | | | | | | | |



3

| | | | | | | | | | | |
|---------------|--------|--------------|-------------------------|-------------|---------|----------------|-------|---|------|----|
| Relation page | Sjabl | A7-2007 | ART-4 Techn. Systems BV | Hoofdstroom | Archiv. | PJ07.03296T1FA | Pages | 4 | Page | 10 |
| Eng. | Eng | GWU | E01632 | | Drawn. | PJ07.03296T1FA | | | | |
| Relation date | Print | 31-2008 | | | | | | | | |
| Relation doc. | Status | For approval | | | | | | | | |



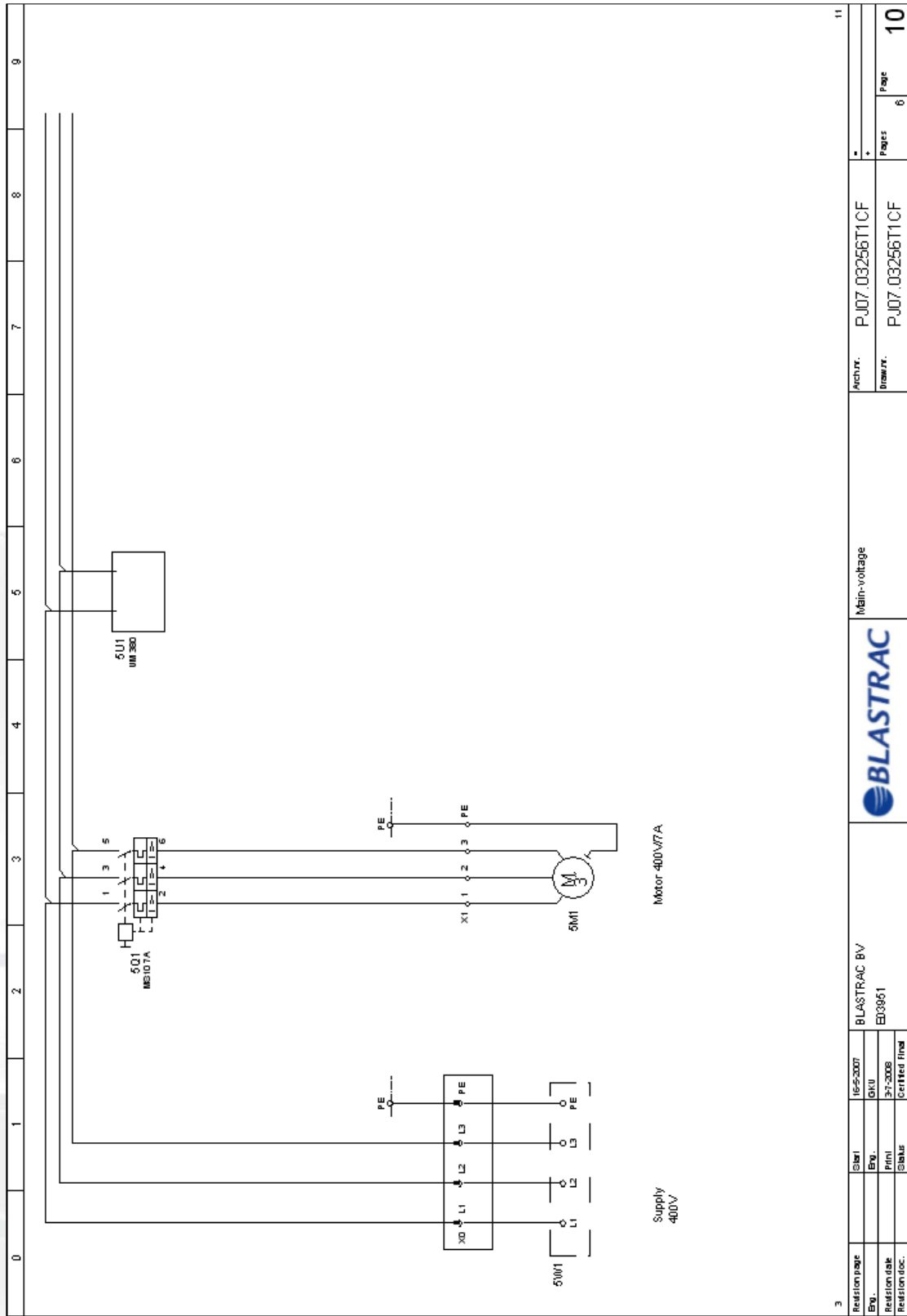
Electric circuit diagram E03951

400V / 6.0A

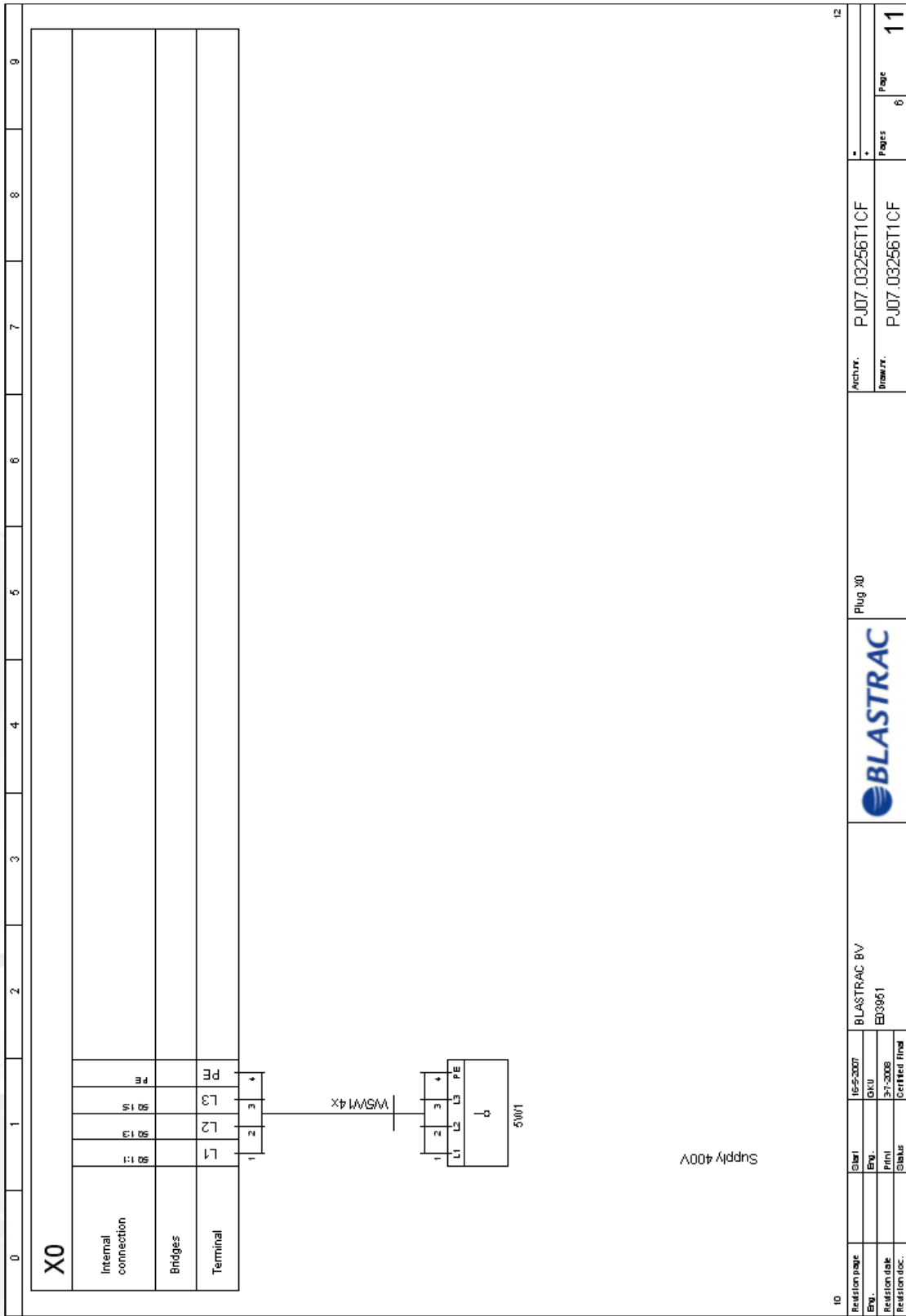
| | | | | | | | | | | | | | | | | | | | | | |
|---|-----------|-------------|---|---|---|-----------|-------------|------|-----|--------|---------------|----------|--|--------------|---|--|------------------|--|--|--|--|
| 0 | 1 | 2 | 3 | 4 | 5 | 6 | 7 | 8 | 9 | | | | | | | | | | | | |
| Particulars: | | | | | | | | | | | | | | | | | | | | | |
| <p>PROJECT Client : BLASTRAC BV Name : E03951</p> | | | | | <p>Supplier : BLASTRAC BV Contact : Telephone : +31(0)30-6018866 Telefax : +31(0)30-6018333 Email :</p> | | | | | | | | | | | | | | | | |
| <p>SUPPLIER Order number :</p> | | | | | <p>Supplier : BLASTRAC BV Contact : Telephone : +31(0)30-6018866 Telefax : +31(0)30-6018333 Email :</p> | | | | | | | | | | | | | | | | |
| <p>DATA Arch.number : PJ07.03256T1CF Calc.number : Status : Certified Final</p> | | | | | <p>Highest page number : 12 Number of pages : 6</p> | | | | | | | | | | | | | | | | |
| <p>Start of project : 16-5-2007 Latest change : 3-7-2008 (Rosterman)</p> | | | | | <p>Arch. : PJ07.03256T1CF Draw. : PJ07.03256T1CF</p> | | | | | | | | | | | | | | | | |
| <table border="1"> <tr> <td>Revision date</td> <td>16-5-2007</td> <td>BLASTRAC BV</td> </tr> <tr> <td>Rev.</td> <td>1.0</td> <td>E03951</td> </tr> <tr> <td>Revision date</td> <td>3-7-2008</td> <td></td> </tr> <tr> <td>Revision no.</td> <td>2</td> <td></td> </tr> </table> | | | | | Revision date | 16-5-2007 | BLASTRAC BV | Rev. | 1.0 | E03951 | Revision date | 3-7-2008 | | Revision no. | 2 | | <p>Frontpage</p> | | | | |
| Revision date | 16-5-2007 | BLASTRAC BV | | | | | | | | | | | | | | | | | | | |
| Rev. | 1.0 | E03951 | | | | | | | | | | | | | | | | | | | |
| Revision date | 3-7-2008 | | | | | | | | | | | | | | | | | | | | |
| Revision no. | 2 | | | | | | | | | | | | | | | | | | | | |
| | | | | | <p>Arch. : PJ07.03256T1CF Draw. : PJ07.03256T1CF</p> | | | | | | | | | | | | | | | | |
| | | | | | <p>Pages 6 Page 1</p> | | | | | | | | | | | | | | | | |



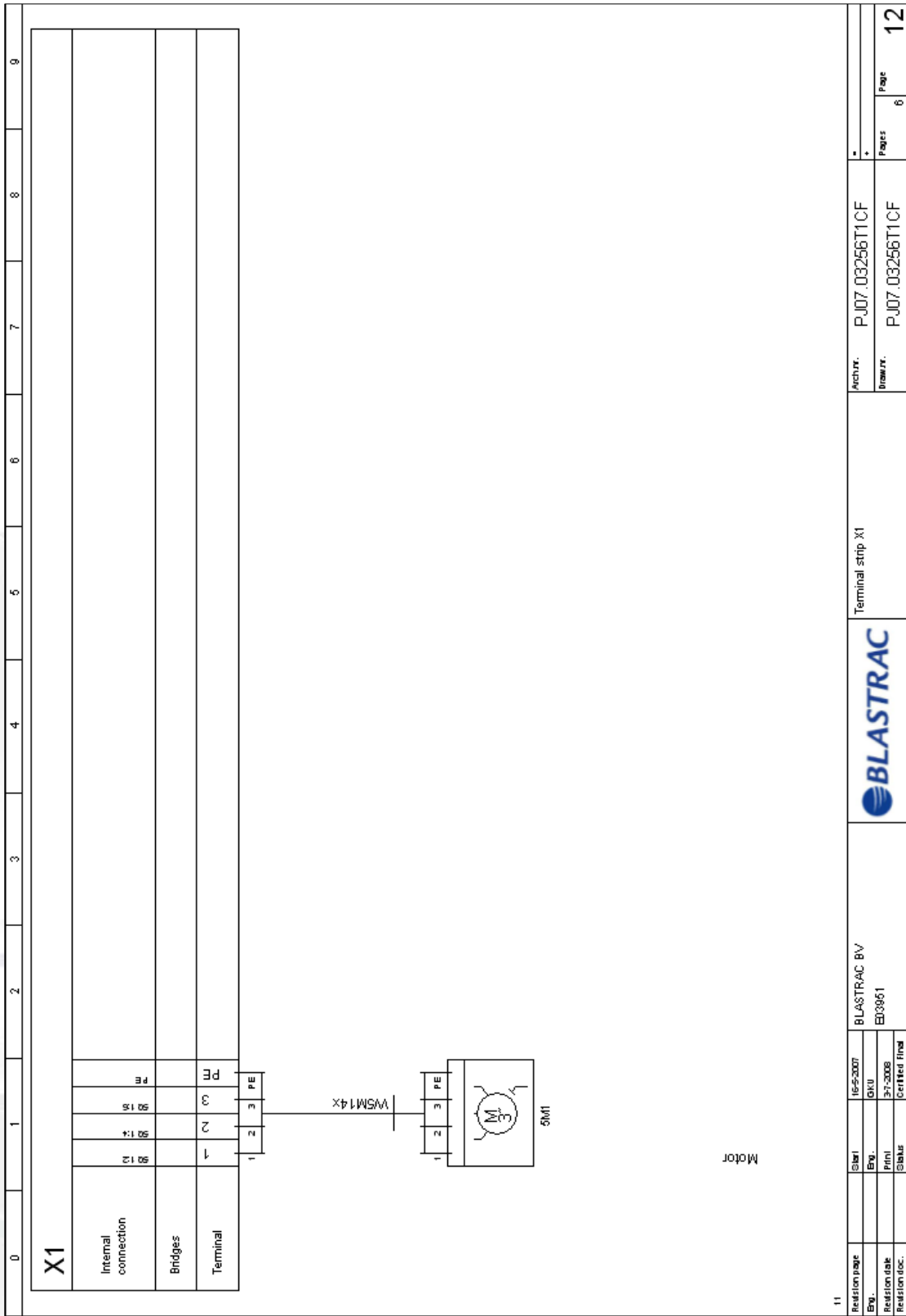
| | | | | | | | | | |
|--|---|---|---|---|---|---|---|---|---|
| 0 | 1 | 2 | 3 | 4 | 5 | 6 | 7 | 8 | 9 |
| <p>Wire color:</p> <p>Main-voltage:</p> <p>L1 -Black</p> <p>L2 -Black</p> <p>L3 -Black</p> <p>PE / PE -Yellow / Green</p> | | | | | | | | | |
| <p>Symbol code explanation:</p> <p>DP 5 Q 1</p> <p>DP: Consecutive numbering</p> <p>5: Symbol letter</p> <p>Q: Page number</p> <p>1: Group (in case used)</p> | | | | | | | | | |
| <p>Archive number explanation:</p> <p>PJ01.01234T1DR</p> <p>PJ: Status</p> <p>01: DR: Draft</p> <p>23: FA: For approval</p> <p>4: CF: Certified final</p> <p>T: Status*</p> <p>1: Serial number</p> <p>DR: Archive number</p> | | | | | | | | | |
| <p>* Status DR: Draft FA: For approval CF: Certified final</p> | | | | | | | | | |
| 10 | | | | | | | | | |
| | | | | | | | | | |
| <p>Explanations</p> | | | | | | | | | |
| <p>Archiv. P.J07.03256T1CF</p> | | | | | | | | | |
| <p>Inwarr. P.J07.03256T1CF</p> | | | | | | | | | |
| <p>Pages 6</p> | | | | | | | | | |
| <p>Page 3</p> | | | | | | | | | |



| | | | | | | | | |
|----------------|-----------------|-------------|--------------|------------------------|-------|---|------|----|
| 3 | 11 | | | | | | | |
| Revision page | 16-5-2007 | BLASTRAC BV | Main-voltage | Archiv. P:07.03256T1CF | Pages | 6 | Page | 10 |
| Eng. | GVU | E03951 | | Drawn. P:07.03256T1CF | | | | |
| Revision date | 31-2008 | | | | | | | |
| Revision desc. | Certified final | | | | | | | |



| | | | | | | | | | |
|----------------|---------------|-----------------|-------------|---------|---------|----------------|-------|---|------|
| ID | Revision page | 16-5-2007 | BLASTRAC BV | Plug X0 | Archiv. | P:07.03256T1CF | | | |
| Eq. | Rev. | 04/11 | BLASTRAC BV | | Drawn. | P:07.03256T1CF | Pages | 6 | Page |
| Revision date | Revision date | 31-2008 | E03951 | | | | | | 11 |
| Revision desc. | Status | Certified final | | | | | | | |



| | | | | | | | |
|---------------|--------|-----------|-----------------|-------------------|---------|----------------|------|
| Relation page | SIB1 | 16-5-2007 | BLASTRAC BV | Terminal strip X1 | Archiv. | P:07.03256T1CF | |
| Eq. | Eq. | Eq. | E03951 | | Drawn. | P:07.03256T1CF | Page |
| Relation date | Print | Print | Certified final | | | | 6 |
| Relation doc. | Status | | | | | | 12 |



Headquarter

Blastrac The Netherlands
 Utrechthaven 12
 NL – 3433 PN Nieuwegein
 Tel – 0031 30 601 88 66
 Fax – 0031 30 601 83 33
 Info@blastrac.nl

Blastrac Poland

Golina, Dworcowa 47a
 PL – 63-200 Jarocin
 Tel – 0048 627 40 41 50
 Fax – 0048 627 40 41 51
 Info@blastrac.pl

Blastrac Italy

S.S. 10 Padana Inferiore, 41
 IT – 29012 Caorso (PC)
 Tel – 0039 0523 81 42 41
 Fax – 0039 0523 81 42 45
 Info@blastra.it

Blastrac United Kingdom

Unit 2, Outgang Lane, Dinnington
 Sheffield, South Yorkshire
 GB – S25 3QY, England
 Tel – 0044 1909 56 91 18
 Fax – 0044 1909 56 75 70
 Info@blastrac.co.uk

Blastrac Germany

Richard Byrd Straße 15
 D – 50829 Köln (Ossendorf)
 Tel – 0049 221 70 90 32 0
 Fax – 0049 221 70 90 32 22
 Info@blastrac.de

Blastrac Spain

Calle Copernico, 16
 Nave 2
 E – 28820 Coslada
 Tel – 0034 91 660 10 65
 Fax – 0034 91 672 72 11
 Info@blastrac.com.es

Blastrac France (ZI)

29, Avenue des Temps Modernes
 F – 86360 Chasseneuil du Poitou
 Tel – 0033 549 00 49 20
 Fax – 0033 549 00 49 21
 Info@blastrac.fr

Blastrac Ukraine

Nezalezhnosti 14, of. 21
 UA – 07400 Brovary
 Tel – 0038 44 222 51 28
 Fax – 0038 44 277 98 29
 Info@blastrac.com.ua