

User Manual for IMAGE IQ UI Corner Interactive System Software Version 5.0



Copyright(C) 2009 A Brighter Image Pty Ltd

Web: www.abimage.com.au

Tel: +02 9938 6866

Fax: +02 9938 6899

E-mail: info@abimage.com.au

Contents

Brief Introduction	4 -5
1:Specifications	5
2: Warning prior to Installation	6
Installation Method	7-10
1: Installation of Hardware	7-10
2: Installation and Uninstall of Software	10
Uninstall software	10
3: Connect the data line	10
Hardware use	11-12
1: Start using the System	11
2: Orientation	11-12
FAQs	13-14
Product Service and Copyright	15

Brief Introduction

The IMAGE IQ UI Corner Interactive System incorporates the latest equipment for teaching, training and conference presentation. It incorporates the latest high-tech research results, such as top electronic technology, software technology, internet technology, etc. It enables static presentations on whiteboards or flat screen displays to be made interactive, ideal for conference, distance education and training. It will gradually replace traditional teaching methods and conference modes. It may be used by any profession in different situations

The IMAGE IQ UI Corner provides abundant software functions. It provides users with reliable, rapid and nimble operation. Its functions are as follows:

1. Operation technology: Ultrasonic technology.

2. System supported: Laptop, PC; Multi-country-language; Win2000/ XP/ 2003/Vista; Mac 10.3 or later.

3. Board Compatibility: Can be fitted to any standard whiteboard, flat panel monitor (LCD, or LCD TV), or Rear Projection TV.

4. Physical properties: Supports any kind of projector image resolution; 1.5cm Induction Height for writing or clicking; 240/S processing rate; High response rate, sensitive operation.

5. Installation: Provide with corner attachment to fit to board or monitor. Receiver slides into corner attachment.

6. Computer Connection: Standard USB slot, Plug & Play, no need of external power. 5m of connection length included. (max 20m extended cable in addition is acceptable).

7. Driver: Corresponding hardware driver and USB driver are needed (supplied).

8. Software functions:

1) Enables PC interaction, save and print, send email, copy and paste, write and erase, capture screen, move and zoom, revolve combination, hyperlink, transmit export, spotlight, magnification, reveal and so on.

2) Mode storehouse, figure label storehouse, standard figure storehouse auto-edit functions are provided. Support figure format such as JPG, GIF, and figure stratification technology.

3) Real time video can be saved as AVI format; auto-control of video play, video handwriting labels are supported by operating system above WINDOWS SP2.

4) Save original label trace of PPT in its original format, and operate directly in the relevant application software.

5) Edit functions of text, figure and image.

6) Achieves long-distance interactive teaching through Internet and Intranet.

7) Provides various working modes, such as mouse, writing and sign note, edit and long-distance interaction, etc.

8) Software upgrades provided FREE. Visit website www.iqboard.com.au for the latest software version.

Product Specifications:

Dimension of receiver: 115 mm×68 mm×32mm
Dimension of controller: 115 mm×75 mm×28mm
Dimension of package: 370 mm×207 mm×128 mm
Standard Net Weight: 1.5kg ±100g

Specification and Configuration

1. Standard package supplied:

- # 1 x Receiver incl receiver attachment mount
- # 1 x Controller
- # 1 x ePen
- # 1 x 2m Din cable; 1 x 3m USB cable
- # 1 x AAA battery
- # Manual
- # CD containing driver and software

2. Technical Parameters:

- # Power consumption less than 0.5W
- # OS: Win2000/XP/2003/Vista
- # Signal: 40 KHz ultrasonic + 880nm infrared
- # Minimum Height of writing or clicking: 1.5cm, Speed of writing or clicking: 240point/s, Speed of signal tracking: 3m/s
- # Effective resolution: 9600×4800, 300dpi.
- # Effective diagonal: 80" (4:3); 100" (16:9). Active area: up to 1.2m X 2.4m
- # Working hours of signal pen battery: more than 52 hours; sensible pressure: >10g
- # Working hours of electronic eraser battery: more than 20hours; sensible pressure: >10g
- # Connect PC through USB port, plug and play, external power is not required unless using Bluetooth connection. Length of cable: 2m from receiver to controller, 3m from controller to PC
- # Power supply: signal pen and electronic eraser use battery, the receiver and controller are powered by USB port (unless bluetooth wireless used; power adaptor then required).

3. System Requirement: (In addition to Projector + Whiteboard or flat panel display.

CPU: Based on X86 CPU;pentium166 or above
Memory: 128 MB RAM
Hard Disk: 30 MB free space
USB Port: at least one available USB port

4. Storage and Operating Specifications:

Storage: Temperature:-40 degrees to 60 degrees; Humidity: 0% to 95%
Operation: Temperature: 0 degree to 40 degrees; Humidity: 15% to 85%.

Warning prior to Installation

- Do not look directly at the projector light.
- Don't leave cables that may causing tripping. If the cables must be put on the floor, straighten and tape them to the floor using "gaffer" tape.

Environment

- Avoid using the EWB in dusty, damp or smog bound environments.
- Read the EWB Maintenance section (p.19) prior to installation and use.

Projecting

- Use the projector output format that matches the whiteboard format being used..
- When ceiling mounting the projector, please make the projector lens level with the top edge of the whiteboard. The centre of the lens must on the horizontal centre of the Whiteboard. The distance from the screen is determined by the optics of the projector. Keystone correction should be used if necessary.
- The Image of the projector must be in the centre of the effective area, to the lower right of the receiver.

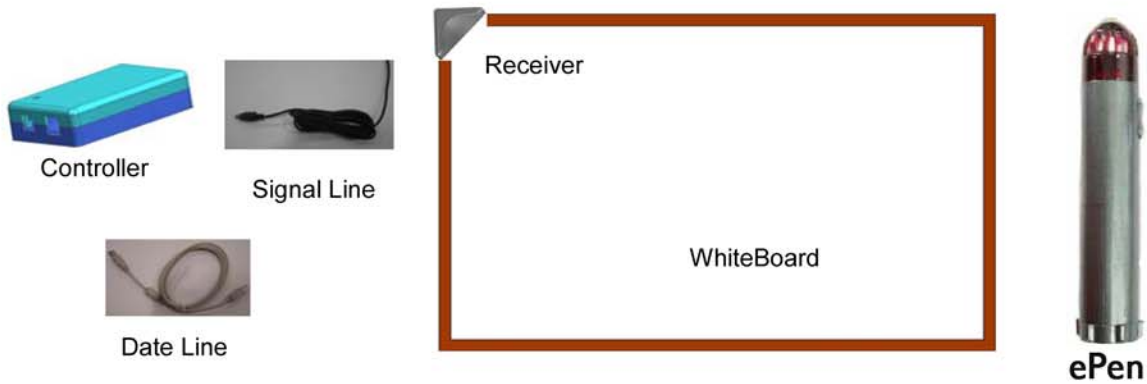
Extended Cable

- When the USB data line needs to be extended, please use shielded twisted pair (Max length should be less than 30m, otherwise there may be loss of signal).

Production Certification and Warranty

The product has passed FCC, CE, and ISO9001, and a three year warranty forthe receiver, and a one year warranty for other accessories is offered.

1: Installation of Hardware



Install and use the signal pen



1. Unscrew the end cap of signal pen turning it counterclockwise.



2. Remove the battery cover by pushing the cover back away from the pen tip.



3. Insert 1 AAA battery with the plus (+) side up.



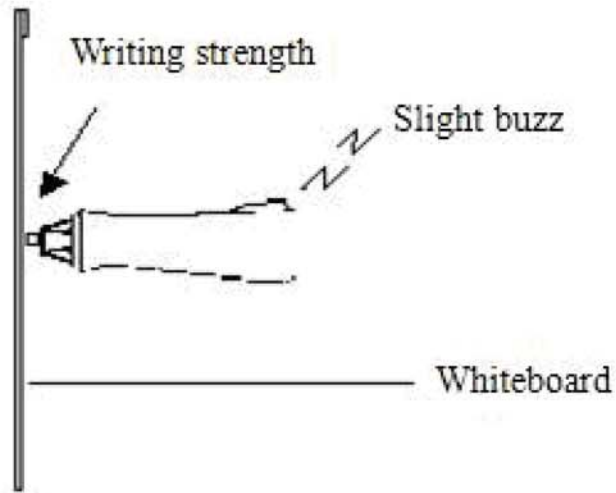
4. Put the battery cover back and screw the cap back on clockwise.

4.2 Setup receiver (IQBoard UI D003 can skip this step)

The receiver can receive the signal emitted by signal pen, and then identify its location on screen or board. Generally the receiver is fixed on whiteboard or RP TV by two-sided tape or screw.

When using the signal pen, please beware that:

1. Write at proper strength to guarantee that the signal pen can emit writing signal (slight buzz can be heard when you hold the pen close to your ear).
2. Try your best to make sure the signal pen is held perpendicular ($\pm 15^\circ$) to the whiteboard.
3. The position where you hold the signal pen should not be lower than the middle part, to ensure you don't block the signal, as follows:

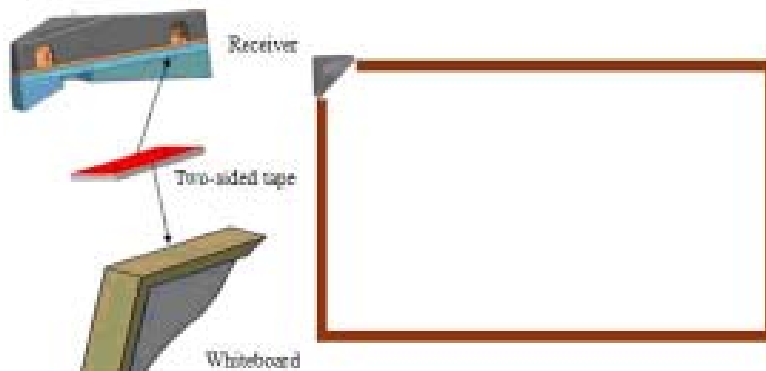


Installing the receiver

The receiver can receive the signal emitted by signal pen or electronic eraser, detect their location on screen or board, send it to controller through signal line, and the controller will transmit the location and operating information to computer through USB cable.

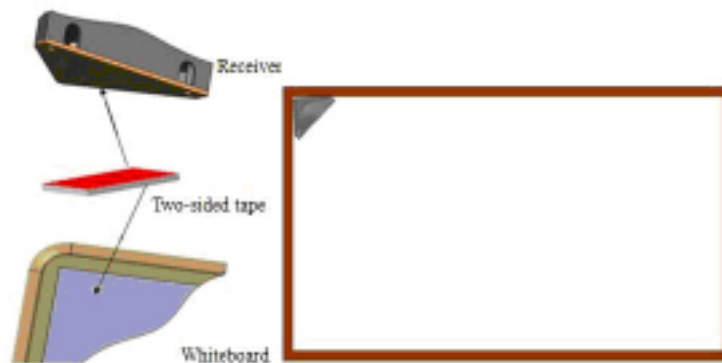
Generally the receiver is fixed on the whiteboard or LCD TV by two-sided tape or screw. In case the frame of the whiteboard or LCD TV is level and smooth, use the following method:

1. Wipe out the dust on the left top corner of the frame
2. Install the receiver on its base,
3. Cut 5cm of the double-sided tape,
- 4 Affix the double-sided tape on the correspond position of the receiver base,
5. Take off the protective layer from the tape,
6. Align the two sides of the receiver base with those of the frame corner, push the base down until the base and the frame are firmly stuck. The installation is complete.



In case the frame of the whiteboard or LCD TV has curved corners, use the following method:

1. Wipe out the dust on the left top corner of the screen or board surface
2. Remove the receiver base
3. Cut 5cm of the double-sided tape,
- 4 Affix the double-sided tape on the corresponding position to the underside of the receiver,
5. Take off the protective layer,
6. Stick the receiver on the screen or board. The installation is complete.



Caution: Ensure that the sides of the receiver are parallel to the frame of the whiteboard or flat panel. Also, the receiver must be parallel with the surface of the board or panel to ensure accuracy in the operation of the system.

2: Installation and Uninstall of Software

Install driver and interactive whiteboard software

Note: There are 2 software programs to load. Please double click on the software in the CD supplied, and follow the instructions:

a. WhiteBoardGeniusDRIVE.exe - Board drivers and calibration software

Follow the installation prompts.

To uninstall, go to Start/Programs/ReturnStar Whiteboard Genius/Uninstall, and follow prompts.

b. Easiteach Starter- Board Presentation software

- (1) Do not connect the data line before installing the software.
- (2) Lowest Specification of PC: Pentium III (500MHz) or above recommended, 128MB RAM, 1G HDD, one USB port, Resolution: 1024×768 (16bit high color or above)
- (3) System Requirement: MS Windows 98/Me/2000/XP
- (4) Some special functions may be limited by the OS used.

Run the file on the CD and install it according the prompts.



.Uninstall

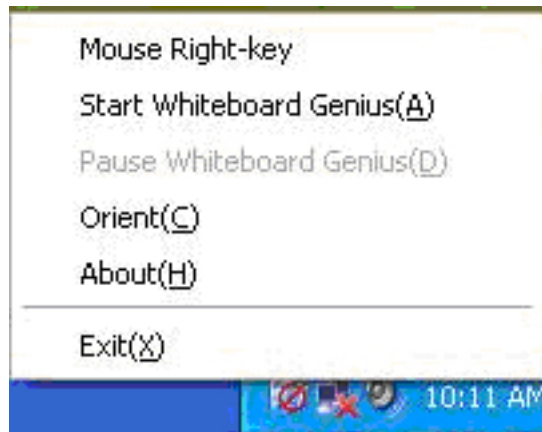
Click *Start > Programs > Easiteach >Uninstall* to uninstall this software. You also can open "*Control Panel*", select "*Add/Remove Programs*", and in the list of currently installed Programs, select "*Easiteach Software*", then press the "*Change/Remove*" button to remove.

Start Using the System:

Select Start > Programs > Returnstar Whiteboard Genius > Start, or click the shortcut on the desktop to start the Whiteboard Genius. A taskbar icon will appear on the right bottom of the screen, as follows. If the system prompts “Hardware not found! Please check your connection!” Please check the controller indicator and refer to “Chapter 7 FAQ” for solution. After you start the Whiteboard Genius, the red controller indicator should turn green.



Caution: After starting Projector Genius, if the taskbar icon is , it means the hardware has not been found, if the taskbar icon is , it means the hardware is connected.



Mouse Right-key: If you click this item, you can use the mouse right-key function for one time.

Start Whiteboard Genius/Pause Whiteboard Genius: Click “Start Whiteboard Genius” to use the signal pen to operate the board. If you want to stop using Whiteboard Genius temporarily, click “Pause Whiteboard Genius”.

Orient: Click this item to enter the orientation interface and orient the whiteboard. If no hardware has been found, the system will popup a prompt window, as follows:



In order to make the Whiteboard Genius work normally, you need to orient it the first time you use it. After you start the Whiteboard Genius, click the taskbar icon and select “Orient” option on the popup box, the Orientation Window will appear, as follows:



We use 9 Points orientation because of its high precision. If you cannot find the red “+” on the projection image, you have to adjust the projection area until you can see it. The course of orientation is very easy, you just need to use your signal pen to click the 9 red crosses in sequence. After it is finished, click “Ok” to exit, then you could operate the virtual whiteboard properly by signal pen or electronic eraser.



Caution:

- 1. If your signal pen did not locate the accurate central point or clicked the wrong point, or the next fixed point appeared without press, please press “ESC” on the keyboard to exit this orientation and re-orient. Otherwise your writing pen or finger will not match the cursor accurately.*
- 2. Please to make your signal upright when orienting.*
- 3. In case the relative position and angle of the projector and receiver is changed, or the position projection image is shifted, or the driver or the monitor resolution is altered, please re-orient.*

For information on the Easiteach software, refer to the Easiteach Instruction manual.

FAQs

Behavior	Reason	Solution
1. The controller indicator is not lighting, or the indicator turns red after start the Whiteboard Genius	<p>1. The signal line is not well connected with the controller, or the USB cable is not well connected with the computer</p> <p>2. The computer USB port or the controller port needs to be replaced.</p> <p>3. The signal line or USB cable needs to be replaced.</p> <p>4. The indicator is not lighting, but the IQ Whiteboard can be normally used.</p> <p>5. The IQ Whiteboard has been started too many times.</p>	<p>Check the USB port or the signal port, and re-connect.</p> <p>In case the controller port needs to be replaced, Please contact your dealer or ABI.</p> <p>Please contact your dealer or ABI.</p> <p>Please contact your dealer or ABI.</p> <p>Close the IQ Whiteboard start icons and re-start the IQ Whiteboard.</p>
2. Signal pen or electronic pointer cannot control the virtual whiteboard, or it can control the computer but cannot write	<p>1. IQ Whiteboard not working</p> <p>2. Whiteboard Genius driver and orientation program are not installed successfully.</p> <p>3. There is an object in front of the receiver that blocks the signal.</p> <p>4. Batteries of signal pen or electronic eraser are run out, or signal pen or electronic eraser is broken.</p> <p>5. The computer is not rebooted after installing the driver and orientation program of IQ Whiteboard.</p> <p>6. The application of electronic whiteboard is not installed.</p> <p>7. The USB cable or signal line is loose or broken.</p>	<p>Start the IQ Whiteboard software.</p> <p>Uninstall the old driver and orientation program, and reinstall.</p> <p>Remove the object.</p> <p>Replace batteries, signal pen or electronic eraser.</p> <p>Reboot your computer, and then start IQ Whiteboard again.</p> <p>Install electronic whiteboard application.</p> <p>Re-plug or change the USB cable or signal line.</p>
3. Signal pen or electronic eraser could only control part of the virtual whiteboard.	The orientation is not precise.	Start the orientation process again.
4. Drawing line is irregular, or it is hard to handle while remote control.	<p>1. Bad orientation</p> <p>2. The batteries of signal pen or electronic eraser are run down, or signal pen or electronic eraser is broken.</p>	<p>Start the orientation process again.</p> <p>Replace batteries, signal pen or electronic eraser.</p>
5. When writing or operating by signal pen or electronic eraser, the response is slow or inconsecutive.	<p>1. The computer is not under normal running or the memory is occupied too much.</p> <p>2. The batteries of signal pen or electronic eraser are run down, or signal pen or electronic eraser is broken.</p> <p>3. There are interference source around the system, such as flashing red light, continuous mental collision sound, etc.</p>	<p>Close some opened applications or restart the computer.</p> <p>Replace batteries, signal pen or electronic eraser.</p> <p>Avoid the interference source and try again.</p>

FAQs

Behavior	Reason	Solution
6. The orientation is not precise, or when orienting, the red orientation cross moves randomly or the cursor flashes greatly.	1. Trapezoid distortion in projector. 2. There are interference source around the system, such as flashing red light, continuous mental collision sound, etc.	Keystone correct the projector. Avoid the interference source and try again.
7. The action of click or double-click is difficult to control.	1. You are not used to the operation yet. 2. The mouse response is too slow or too fast.	When operating, please close the pen point to the surface and keep it steady. Please practice 2-5 minutes until you master it. Slow the mouse response speed.

Product Service

1. Software Upgrade: Free Updates of the software will be supplied when available. Check the website for information on the latest version. It is listed under “Downloads” on the Home Page www.iqboard.com.au.
2. Technology Service: A copy of the User Manual will also be located in the same Downloads section. If you have any technical queries, contact ABI staff on 02.9938 6866.
3. Quality Warranty:

Three years warranty is provided on the receiver & controller, and its operation. The service “back to base”, so the client has to return the board to ABI and ABI will organize the return of the board to the user. It does not include:

- (1) Accessories (pens, batteries, cable).
- (2) Physical damage, including surface scratching, marks, build up of dirt and pen ink, and distortion caused by faulty installation.
- (3) Damage resulting from operation not as stipulated in the user manual.
- (4) Warranty on the product will be voided if the board is disassembled by the user or an unauthorized repairer.
- (5) Damage caused by force majeure such as natural disaster, thunder and lightning and accident.
- (6) Product accessories, consumable parts such as CD, user manual, package, fixing parts, batteries, the shell, the consumption components are all not include into the free repairing or exchanging a purchase clause.
- (7) The user must be able to provide a copy of the original invoice.

4. After Sale Service:

- 1) ABI provides a service centre support to service and repair the IQ Whiteboard. Contact ABI on 02.9938 6866 to discuss any problems or organize a service.
- 2) Repairing: When the warranty period has expired or the damage is not a warranty issue, the customer will be charged for any repair. Customers can purchase related parts from ABI Pty Ltd. When sending the damaged parts back to ABI for repair, the customer has to pay the transportation costs and repair.

Copyright

This user manual is for the IMAGE IQ Whiteboard; the copyright belongs to A Brighter Image Pty Ltd. We have the right to modify the content of user manual without notice.