

LASER



BLU-BD1000 Blu-ray Disc Player

User Manual



IMPORTANT SAFETY INSTRUCTIONS AND PRECAUTIONS

IMPORTANT SAFETY INSTRUCTIONS AND PRECAUTIONS

- Please read the instructions carefully before using this product
- Observe all warnings and cautions when using this product.
- Retain all manuals and documentation for future referral.
- Only use this product in the manner described in this manual.
- Do not use this device in extremely hot, cold, humid, dusty or sandy environments.
- Do not use this device in electrical storms or other conditions if the likely hood of lightning is possible.
- Do not attempt to clean this product using liquid cleaners or aerosol cleaners. Use only a damp soft cloth to clean the surface of this device.
- This device may become hot during use. Do not cover vent holes and place in a well ventilated area.
- This device is not waterproof. Do not use this device in the open if there is a high level of moisture in the air.
- Only place the device on a stable surface and ensure that cables attached to the device can not cause the device to fall.
- There are no serviceable parts in this device. Attempts to open this device by unauthorised personnel may cause further damage and void the warranty.
- Images of the product and accessories are indicative only and may vary slightly from actual the product.
- We reserve the right to make changes to this document and the product without notification.

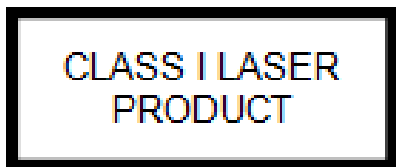


The lightning flash with arrowhead symbol, within an equilateral triangle, is intended to alert the user to the presence of uninsulated "dangerous voltage" within the product's enclosure that may be of sufficient magnitude to constitute a risk of electric shock to persons



The exclamation point within an equilateral triangle is intended to alert the user to the presence of important operation and maintenance (servicing) instruction in the literature accompanying the appliance

IMPORTANT SAFETY INSTRUCTIONS AND PRECAUTIONS



THIS PRODUCT UTILIZES A LASER. USE OF CONTROLS OR ADJUSTMENTS OR PERFORMANCE OF PROCEDURES OTHER THAN THOSE SPECIFIED HEREIN MAY RESULT IN HAZARDOUS RADIATION EXPOSURE.

DO NOT OPEN COVERS AND DO NOT REPAIR YOURSELF. REFER SERVICING TO QUALIFIED PERSONNEL.

TRADEMARKS

- DVD Logo is a trademark of DVD Format/Logo Licensing Corp., registered in the U.S., Japan and other countries.
- "AVCHD" and the "AVCHD" logo are trademarks of Panasonic Corporation and Sony Corporation.
- Designed for Windows Media, Microsoft, HDCD, and the HDCD logo are trademarks or registered trademarks of Microsoft Corporation in the United States and/or other countries.
- DTS is a registered trademark and the DTS logos, Symbol, DTS-HD and DTS-HD Master Audio | Essential are trademarks of DTS, Inc. © 1996-2008 DTS, Inc. All Rights Reserved.
- Manufactured under license from Dolby Laboratories. "Dolby" and the double-D symbol are trademarks of Dolby Laboratories.
- HDMI, the HDMI logo and High-Definition Multimedia Interface are trademarks or registered trademarks of HDMI Licensing LLC.
- All other trademarks are the properties of their respective owners.

TABLE OF CONTENTS

TABLE OF CONTENTS

IMPORTANT SAFETY INSTRUCTIONS AND PRECAUTIONS.....	1
TRADEMARKS.....	2
MEDIA COMPATIBILITY.....	6
Blu-ray.....	6
DVD.....	6
CD.....	7
USB.....	7
INCOMPATIBLE MEDIA.....	7
REGION INFORMATION.....	7
Blu-ray.....	7
DVD.....	8
PLAYER & DISC CARE.....	8
Cleaning the BLU-BD1000 Player.....	8
Lens Cleaning.....	8
Handling Discs.....	8
Cleaning Discs.....	9
WHATS IN THE BOX.....	9
KNOWING YOUR BLU-BD1000.....	10
THE REMOTE CONTROL.....	10
Installing the Remote Control Batteries.....	12
CONNECTING THE PLAYER.....	13
CONNECTING VIDEO.....	13
GOOD: Connecting By Composite Video.....	13
BETTER: Connecting By Component Video.....	14
BEST: Connection By HDMI Cable.....	14
CONNECTING AUDIO.....	15
GOOD: Connecting RCA Stereo.....	15
BETTER: Connecting Coaxial Digital Audio.....	15
BEST: Connecting the HDMI cable to a Home Theatre system.....	16
CONNECTING A USB DEVICE.....	18
CONNECTING POWER.....	19
START-UP WIZARD.....	20

SETUP MENU.....	22
GENERAL SETTING.....	22
System	23
Screen Saver.....	23
Disc Auto Playback	23
Load Default	23
Upgrade	23
Easy Setup.....	23
OSD (On Screen Display).....	23
MENU.....	23
AUDIO	23
SUBTITLE	23
Playback.....	24
Closed Caption	24
Angle Mark.....	24
Secondary Audio Mark	24
Security	24
DISPLAY SETTINGS.....	25
TV.....	26
TV SCREEN.....	26
Resolution	26
TV System.....	26
Colour Space	26
HDMI Deep Colour	26
<i>(For TVs with this feature)</i>	26
Video Process.....	26
Sharpness.....	26
Motion Video Process	26
Video Mode.....	26
AUDIO SETTINGS.....	27
Audio Output	27
HDMI.....	27
Down Sample	27
DRC	27

Speaker Setting	28
Configuration	28
Test tone	28
Post Process	28
UpMix	28
SYSTEM INFORMATION	28
PLAYING A DISC.....	29
OSD (On Screen Control)	29
Disc now playing.....	30
Current File	30
Current title or track number	30
Current Chapter number	30
Playback time	30
Playback type	30
Audio track.....	30
Angle	30
Subtitle.....	30
Code Page	30
Subtitle Style	30
Second Video (PIP)	30
Second Audio	30
Audio/Video Bitrate.....	30
Still Off	30
INS Search*	30
INS Replay*	30
Creating and Using Bookmarks.....	31
Programming a Disc	31
Cancelling a Program.....	31
MEDIA CENTRE.....	32
Playing a file	32
Creating a Playlist	33
Playing a Playlist	34
GETTING THE BEST FROM THE PLAYER	35
PAL/NTSC	35

DVD Up-Scaling	35
DVD Region Encoding	35
Blu-Ray Region Encoding	35
Changing the Region Code.....	35
DVD Region Change.....	36
BD Region Change	36
Resolution	36
Aspect Ratios.....	37
HDMI Deep Colour	38
HDMI 1080P 24Hz	38
Audio Setup.....	39
TROUBLESHOOTING	41
TECHNICAL SPECIFICATIONS.....	43
CONTACT INFORMATION	44
FOR OTHER ACCESSORIES AND PRODUCTS.....	44

MEDIA COMPATIBILITY

MEDIA COMPATIBILITY

Since the Blu-ray Disc specifications are new and evolving, some discs may not play properly depending on the disc type, version and encoding. It is possible that a Blu-ray disc manufactured after the player was manufactured uses certain new features of the Blu-ray Disc specifications. To ensure the best possible viewing experience, the player may need a firmware or software update from time to time.

Blu-ray

Media Type	Compatibility	Limitations
Blu-Ray Disk	BD-ROM (SL/DL)	Supports high bit rate audio (Dolby Digital Plus, Dolby TrueHD, DTS-HD High Resolution Audio and DTS-HD Master Audio) adopted in BD-Video.

DVD

Media Type	Compatibility	Limitations
DVD	DVD-ROM, DVD+R(SL/DL), DVD-R (SL/DL), DVD-RW (SL/DL).	DVD Video or files compatible with the BLU-BD1000 only. Recordable DVD media must be finalised by a recorder before playback on the BLU-BD1000.

CD

Media Type	Compatibility	Limitations
CD	CD-Audio, CD-R, CD-RW	Recordable CD media must be finalised by a recorder before playback on the BLU-BD1000.

USB

Media Type	Compatibility	Limitations
USB	Flash Drives	Formatted in FAT or FAT32 only up to 16GB

USB hard drives connect to the BLU-BD1000 should be powered by another source as well as the USB port. A secondary power source may be required for some Notebook style USB hard drives.

INCOMPATIBLE MEDIA

INCOMPATIBLE MEDIA

The following media may not be playable or produce erratic or substandard playback.

- DVD-RAM
- DVD- Audio
- BDs With cartridge
- Data files on CD-Extra discs
- BD-Video discs recorded at a rate of 50 fields (frames) per second.
- Super Audio CD
- WMA discs
- DVDs with cartridge
- CD Audio with DRM
- Photo CD
- DivX discs
- HD DVD
- Non-finalised media

NOTE: It may not be possible to play the above media in some cases due to the type of media, the condition of the recording, the recording method and how the files were created.

The producers of the disc can control how discs are played, so you may not always be able to control play as described in this Owner's Manual. Read the disc's instructions carefully.

REGION INFORMATION

Blu-ray

This player is designed and manufactured to respond to the region management information.

If the region number of a BD-Video or DVD disc does not correspond to the current region number of this player, the player cannot play the disc.

The BLU-BD1000 is preset to play discs meant for region B



Region Code

Region Country



North America, Central America, South America, Korea, Japan, Taiwan, Hong Kong, South East Asia



Europe, Greenland, French territories, Middle East, Africa, Australia, and New Zealand



India, China, Russia, Central Asia, and South Asia

DVD

This player is designed to play DVDs from all regions.

Note: Please refer to the **GETTING THE BEST FROM THE PLAYER** section later in this manual for information on changing BD & DVD Region Codes.

PLAYER & DISC CARE

PLAYER & DISC CARE

Cleaning the BLU-BD1000 Player

Always turn the player off and unplug the power cord before cleaning.

Never use alcohol, paint thinner or benzene to clean this unit.

Before using chemically treated cloth, carefully read the instructions that came with the cloth.

Please use a damp soft cloth. Wring out any excess liquid and gently wipe the external case of the player. Let the player dry before using again.

Lens Cleaning

Use a commercially available CD/DVD/BD lens cleaner (not supplied) to periodically clean the lens in this player. Please read the instructions supplied with the lens cleaner carefully before use.

Handling Discs

- Handle discs by the edges to avoid inadvertent scratches or fingerprints on the disc.
- Do not attach labels or stickers to discs.
- Do not use record cleaning sprays, benzene, thinner, static electricity prevention liquids or any other solvent.
- Do not use the following discs
 - Discs with exposed adhesive from removed stickers or

- Labels (rented discs etc) that are lifting or torn.
- Discs that are warped or cracked.
- Irregularly shaped discs, such as heart shapes.

Cleaning Discs

DO



Don't



Wipe discs with a soft damp cloth and allow to dry before placing disc in the players tray.

Never use alcohol, paint thinner or benzene to clean discs.

KNOWING YOUR BLU-BD1000

WHATS IN THE BOX

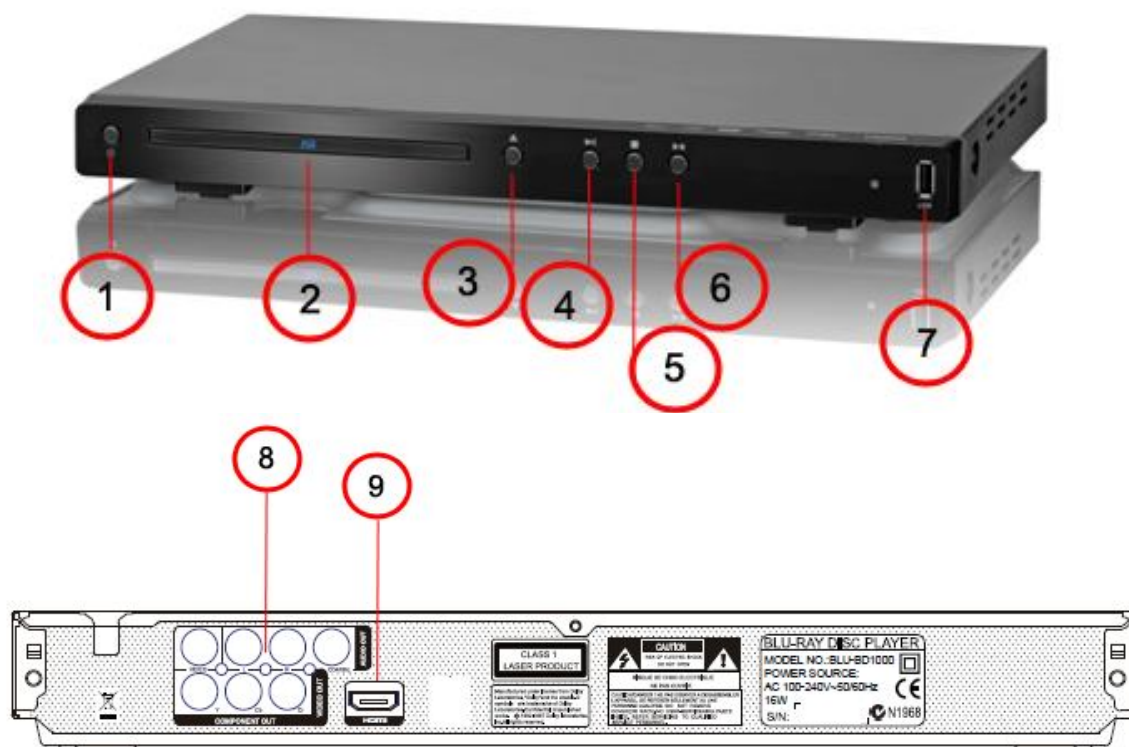
- BLU-BD1000 Blu-ray disc player
- Remote control
- 2 x AAA Batteries
- Composite (RCA) Video/Audio cable
- User Manual (This Document)

BLU-BD1000

USER MANUAL

KNOWING YOUR BLU-BD1000

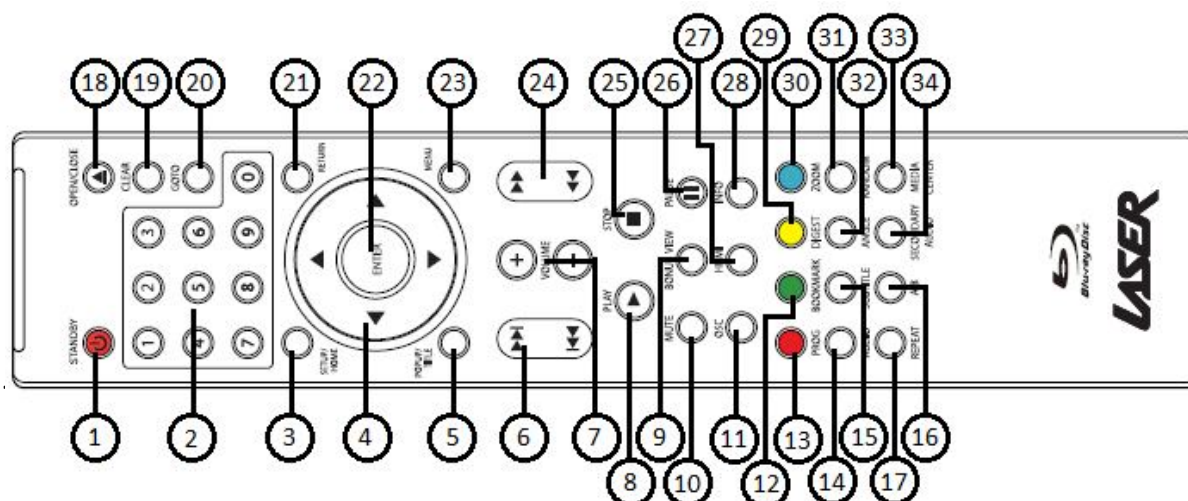
Please make yourself familiar with the layout of the BLU-BD1000 and the remote control.



Item	Description	Item	Description
1	STANDBY (On/Off)	6	STOP loaded disc during playback
2	Disc load tray	7	USB port
3	OPEN/CLOSE tray button	8	COMPOSITE/COMPONENT/DIGITAL COAXIAL Audio/Video Output
4	PLAY loaded disc		
5	PAUSE loaded disc	9	HDMI port

THE REMOTE CONTROL

THE REMOTE CONTROL



	LABEL	FUNCTION	BD	DVD/CD	MC
1	STANDBY	Press to turn player On or OFF	✓	✓	✓
2	NUMERIC KEYPAD	For search function	✓	✓	✓
3	SETUP/HOME	Access/Exit Setup menu	✓	✓	✓
4	NAVIGATION ARROWS	Navigate Menus	✓	✓	✓
5	POPUP/TITLE	To View or Exit POPUP menu on supported discs	✓	✗	✗
6	PREVIOUS/NEXT	Skip to previous or next track	✓	✓	✓
7	VOLUME	Adjust the Volume Level up or down	✓	✓	✓
8	PLAY	Press to play loaded disc or current media file	✓	✓	✓
9	BONUS VIEW (BD1080 model only)	Press to view multiple videos (picture in picture)	✓	✗	✗
10	MUTE	Press to must volume	✓	✓	✓
11	OSC	Press to view On Screen Controls	✓	✓	✓
12	BOOKMARK	Press to add Book mark for a loaded disc	✓	✓	✗
13	PROG	Program sequence of track to be played	✓	✓	✗
14	AUDIO	Press to switch between available audio tracks	✓	✓	✗
15	SUBTITLE	Press to switch between available subtitles	✓	✓	✗
16	REPEAT	Press to repeat the current track, chapter or disc	✓	✓	✗
17	A-B	Press to set start and end point for loop playback	✓	✓	✓
18	OPEN/CLOSE	Press to open or close the disc tray	✓	✓	✓
19	Clear	Press to clear numbers entered by Keypad	✓	✓	✓
20	GOTO	Press to go to specific track or time	✓	✓	✓

THE REMOTE CONTROL

	LABEL	FUNCTION	BD	DVD/CD	MC
21	RETURN	Press to return to the previous menu	✓	✓	✗
22	ENTER	Press to confirm menu selection	✓	✓	✓
23	MENU	Press to show the Main Menu for current disk	✓	✓	✗
24	FORWARD/REVERSE	Press to fast forward/fast rewind	✓	✓	✓
25	STOP	Press to stop current playback	✓	✓	✓
26	PAUSE	Press to Pause current playback	✓	✓	✓
27	HDMI	Press to cycle through Video Resolutions	✓	✓	✓
28	INFO	Press to display information on current playback	✓	✓	✓
29	DIGEST	Press to display additional information on discs	✓	✓	✗
30	ZOOM	Press to zoom in or out on current screen image	✓	✓	✓
31	RANDOM	Press to play chapters or track in a random order	✗	✓	✗
32	ANGLE	Press to view alternate angles on supported discs	✓	✓	✗
33	Media Center	Press to open or close Media Center Console	✓	✓	✓
34	SECONDARY AUDIO	Press to Activate Secondary Audio Languages	✓	✓	✗
28	INFO	Press to display information on current playback	✓	✓	✓
29	DIGEST	Press to display additional information on discs	✓	✓	✗
30	ZOOM	Press to zoom in or out on current screen image	✓	✓	✓
31	RANDOM	Press to play chapters or track in a random order	✗	✓	✗
32	ANGLE	Press to view alternate angles on supported discs	✓	✓	✗
33	Media Center	Press to open or close Media Center Console	✓	✓	✓
34	SECONDARY AUDIO	Press to Activate Secondary Audio Languages	✓	✓	✗

BD=Blu-ray Disc; DVD/CD = DVD or CD audio discs; MC = Media Center

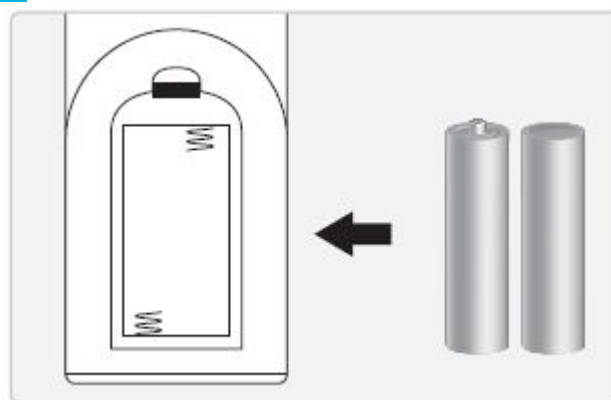
***Please note: Some features on this remote control require the feature to be available and supported by the disc/media being played.**

Installing the Remote Control Batteries

Before using the BLU-DB1000 Blu-ray player, please take a moment to fit the supplied AAA batteries to the remote control.

Unclip the compartment lid and insert the batteries as shown to the right.

When the batteries are fitted. Locate the lugs on the bottom of the lid and clip back in to place.



When using the remote control, the front window of the remote control should be pointed to the infrared sensor on the front panel within an angle of $\pm 30^\circ$ and a range of about 4.5 meters.

CONNECTING THE PLAYER

CONNECTING THE PLAYER

Before connecting the BLU-BD1000 please consider the following.

Distance from TV: Make sure that you have the correct length cables to allow the connection of the BLU-BD1000 to your display.

Ventilation: Where ever the BLU-BD1000 is to be setup it must be in a well ventilated area.

Once the decision has been made on where to place the player in relation to the TV, please select the connection method that best suits your needs and equipment. Image and sound quality will vary between connection types.

Please connect the Video, Audio and Ethernet cable before connecting to a mains power outlet.

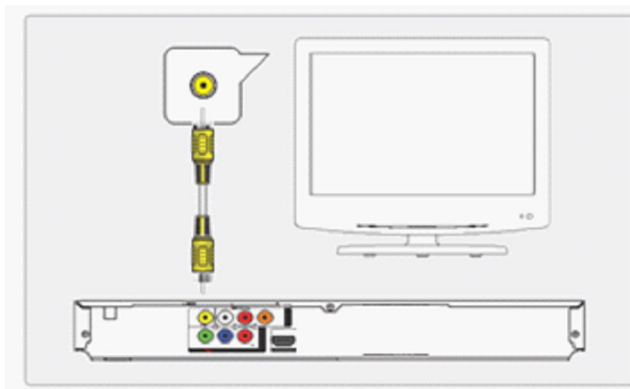
CONNECTING VIDEO

GOOD: Connecting By Composite Video

Requires an RCA video cable (included)

The standard colour for composite video ports is yellow.

1. Plug the RCA video cable into the **COMPOSITE VIDEO OUTPUT** on the player and a **COMPOSITE VIDEO INPUT** on the television.
2. Select the AV Channel on the TV which corresponds to the video input. E.g. AV1, AV2 etc.
3. This will allow video from the player to show on the connected television.



Please see AUDIO CONNECTION for the best audio connection.

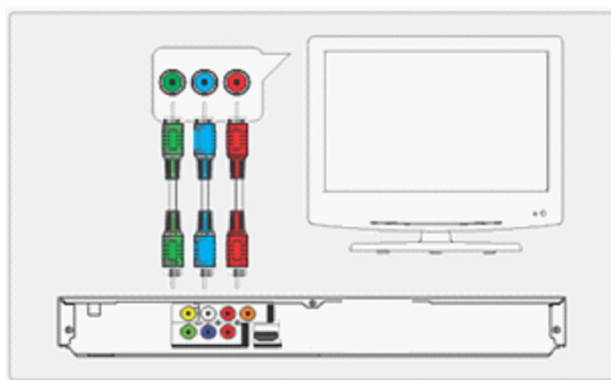
CONNECTING THE PLAYER

BETTER: Connecting By Component Video

Requires an RCA component video cable (not included).

*The standard colours for component video ports are **GREEN, BLUE, and RED**.*

1. Plug the 3 RCA video cables into the **COMPONENT VIDEO OUTPUT** on the player and a **COMPONENT VIDEO INPUT** on the television. Typically these are colour coded and marked as PbPrY.



2. Select the AV Channel on the TV which corresponds to the video input. E.g. **COMPONENT**.

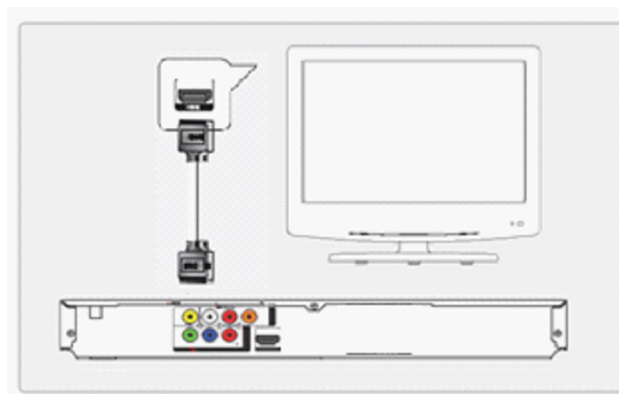
3. This will allow video from the player to show on the connected television.

*Please see **AUDIO CONNECTION** for the best audio connection.*

BEST: Connection By HDMI Cable

Requires a HDMI cable (not included).

1. Plug the HDMI cable into the **HDMI OUTPUT** on the player and into the **HDMI input** on the television.
2. Select the AV Channel on the TV which corresponds to the video input. E.g. **HDMI 1, HDMI 2 etc.**
3. This will allow video and audio from the player to play on the connected television.



CONNECTING THE PLAYER

CONNECTING AUDIO

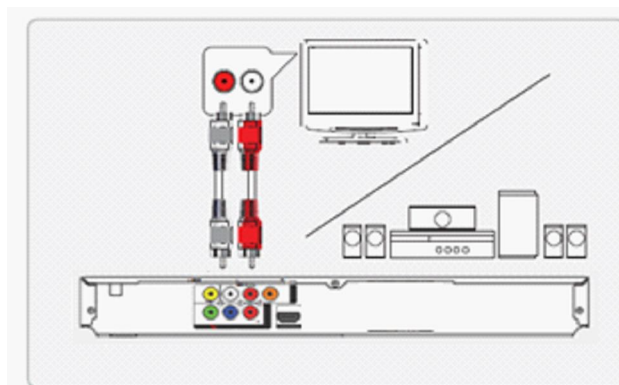
Audio from the BLU-BD1000 can be played through a connected television or a full home theatre surround sound system.

GOOD: Connecting RCA Stereo

Requires RCA Stereo Audio cable (included)

Standard colours for RCA stereo is WHITE=LEFT channel, RED= RIGHT channel.

1. Plug the RED and White RCA cables in to the WHITE and RED RCA STEREO AUDIO OUTPUT on the player and plug the other end in to the RCA Stereo input on the television or the stereo or Home Theatre system.
2. Set the connected television, stereo or Home Theatre system to the input source used in step #1.



3. This will allow audio from the player to play on the connected device.

NOTE: The STEREO AUDIO OUT terminals will always provide a down-mixed stereo signal from multi-channel sources. The "Down Mix" and other speaker settings in the Audio Setup do not affect the STEREO AUDIO OUT.

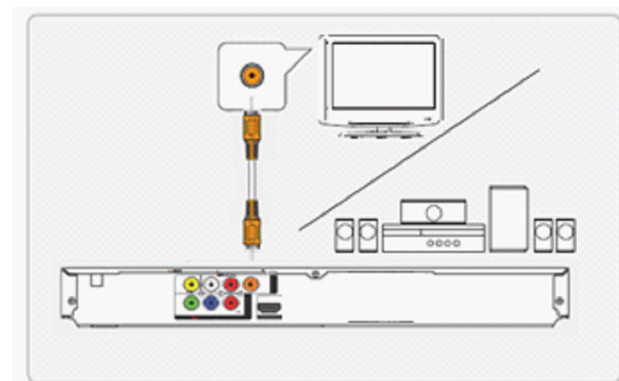
CONNECTING THE PLAYER

BETTER: Connecting Coaxial Digital Audio

Requires a Coaxial Digital Audio Cable (75 ohm RCA) (not included)

Standard colour for coaxial digital audio ports is ORANGE.

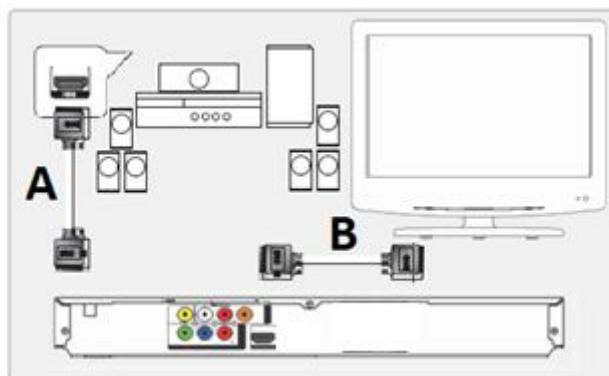
1. Plug the COAXIAL DIGITAL AUDIO Cable in to the COAXIAL DIGITAL AUDIO OUTPUT on the player and plug the other end in to the COAXIAL DIGITAL AUDIO Cable input on the television or Home Theatre system.
2. Set the connected home theatre system to the input source used in step #1.



BEST: Connecting the HDMI cable to a Home Theatre system

Requires 2 x HDMI V1.3 cables (not included).

1. Plug the first HDMI cable (**A**) into the **HDMI OUTPUT** on the player and into the **HDMI input** on the Home Theatre System.
2. Plug the second HDMI cable (**B**) into the **HDMI OUTPUT** on the Home Theatre System and into the **HDMI input** on the television.



NOTE: If you have connected the BLU-BD1000 to a Home Theatre System using the Coaxial Digital Audio cable you may need to also connect the RCA Stereo Connection to your TV To allow Audio to be heard through the TV when it is not convenient to have the Home Theatre System turned on.

- Combinations of Audio and Video Connections are possible depending on the equipment the player is to be connected to. Please refer to the equipment user manual to determine the method or combination that best suits your needs.

CONNECTING THE PLAYER

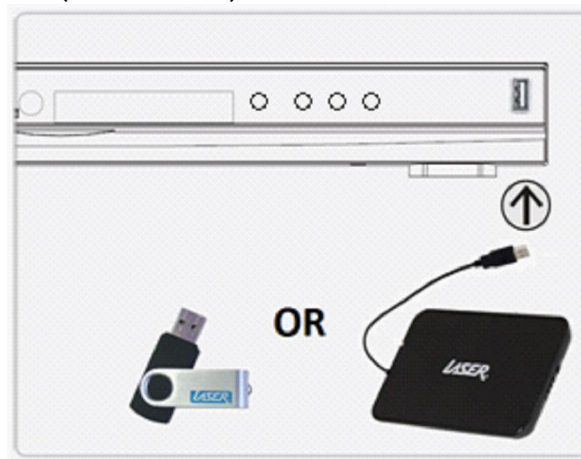
- *HDMI can transmit both audio and video signals over a single cable. If you have an HDMI capable receiver that can support HDMI audio, you can simply run an HDMI cable from the player to your receiver and enable HDMI audio on the receiver (see your receiver's owners' manual for more information). The receiver usually has an HDMI output that you can connect to your TV to pass the video signal.*
- *HDMI is a wonderful thing. A single cable can transport both audio AND video from your player to your display. Be aware, however, that HDMI is an evolving standard, and there could be compatibility issues. A receiver that supports audio input over HDMI is required.*
- *Some receivers offer HDMI ports solely for video switching. If your receiver does not have audio input capability, please read the following sections regarding other connection methods.*
- *In order to play multi-channel audio for all formats, the receiver must support HDMI v1.1 or later. For Blu-ray Disc, a receiver that supports HDMI v1.3 with decoding capability for Dolby TrueHD and DTS-HD Master Audio is preferred. Please check the specifications of your receiver to ensure that it meets the requirements.*
- *Due to bandwidth limitations, high resolution audio formats such as Dolby Digital Plus, Dolby TrueHD, DTS-HD High Resolution and DTS-HD Master Audio cannot be sent through the coaxial digital audio output. A reduced resolution version of the same audio track will be output instead. To listen to high resolution audio formats in their best quality, please use the HDMI connection if you have a receiver that handles HDMI audio.*
- *Due to copyright restrictions and bandwidth limitations, full resolution audio from DVD-Audio discs cannot be sent through the coaxial or optical digital audio output. To listen to DVD-Audio in full resolution, please use the HDMI or analogue audio connections.*

CONNECTING THE PLAYER

CONNECTING A USB DEVICE

Requires a USB Flash drive or an external USB HDD (not included).

1. Insert the USB drive (or cable) into the USB port on the front of the player.
2. To access the content of the USB device for playback please see the Media Center section later in this manual.



NOTE: The USB ports are rated to provide a maximum of 5V, 500mA power to the USB drive. It is sufficient for all USB thumb drives and flash memory card readers, but may not be sufficient for USB hard disks. It is recommended that you use a USB hard disk with an external power supply.

This unit supports "USB Mass Storage Class Bulk-Only Transport" devices only. Most USB thumb drives, portable hard disk drives and card readers conform to this device class. Other USB devices such as MP3 players, digital cameras, and mobile phones may not be compatible.

Supported USB drives must be formatted with the FAT (File Allocation Table) or FAT32 file system.

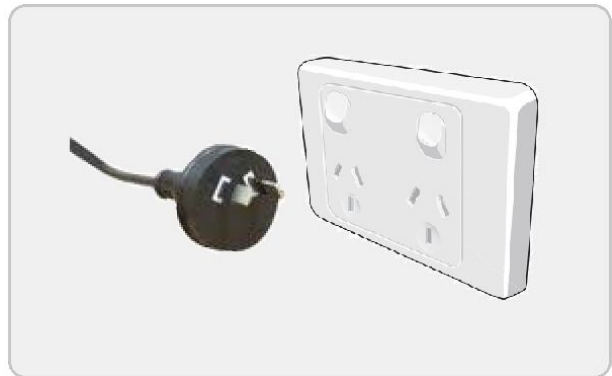
In some cases, an incompatible USB device may cause the player to stop responding. If this occurs simply turn off the power, remove the USB device, and turn the player back on.

The player accesses the USB drive in read and write mode. In order to minimize the risk of data corruption, it is recommended that you only unplug the USB device when playback is completely stopped.

CONNECTING THE PLAYER

CONNECTING POWER

1. Connect the power plug from the player to a mains power outlet and then turn the switch on.
2. The red stand-by power LED on the front panel of the player should now be off.
3. Allow for up to 10 seconds for Blu-ray disc data to load
4. The BLU-BD1000 is now ready to use.



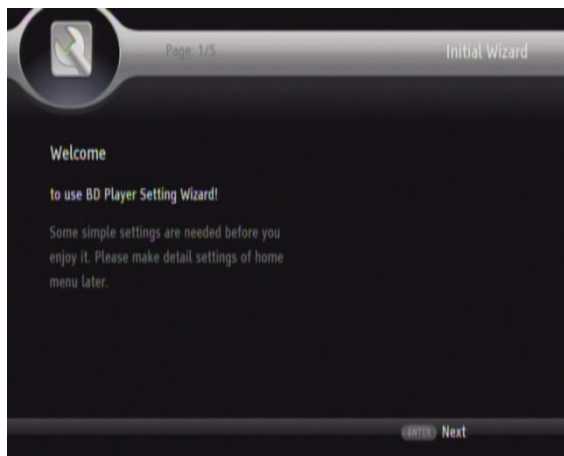
START-UP WIZARD

START-UP WIZARD

Press the Power button on the remote control to start the player.

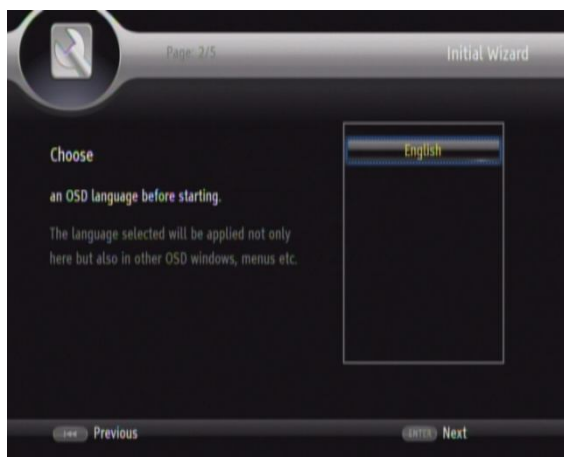
1. The first time the player is started a Wizard guides you through the basic settings of the player.

Press the Enter Button to Continue



2. First shown is the On Screen Language Option

Press the Enter Button to continue



3. Use the UP & DOWN Navigation buttons on the remote control to select the correct resolution for your Television or monitor you are using. Please refer to the manufacture documentation to confirm compatible resolutions.

Press the Enter Button to continue



Note: If you are connecting the player using the Composite Video Connection method please select the 480i/576i or 480P/576P options only. Higher resolutions will not be displayed.

4. In case the select resolution is not compatible with the attached television the BLU-BD1000 will ask you to confirm the resolution change. By default it will time out after 15 seconds and revert to the previous settings. Using the UP & DOWN navigation buttons on the remote control please select YES and press enter.

If you do not see this screen please wait for 15 second the BLU-BD1000 will revert to the previous resolution.

5. If the message shown to the right is displayed it means that the current selected resolution is not compatible with the display.

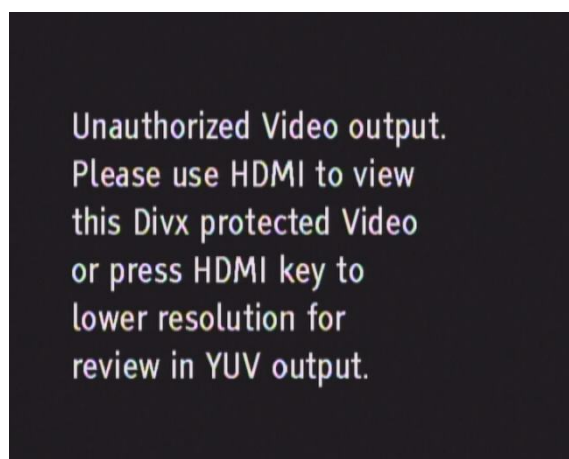
Press the HDMI button on the remote control to adjust the output resolution of the player. Repeat until the Start-up Wizard is visible again.

6. With the display resolution set you will need to set the Aspect Ratio for the Display.

In most cases Selecting the **"16:9 Normal"** option is the best. If you do not have a wide screen TV please select the **"4:3 Letterbox"** option.

(please see further for A detailed explanation of Aspect Ratios)

Press the Enter Button to continue



SETUP MENU

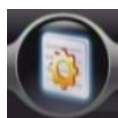
SETUP MENU

When the Start-up Wizard is complete The Main Setup Menu will be displayed so you can fine tune the settings on the BLU-BD1000 to suit the environment it is being used in and the equipment it is being used with.

The Setup Menu can be accessed at any other time by press the SETUP/HOME button on the remote control at any time.

- Use the LEFT, RIGHT, UP and DOWN navigation buttons on the remote to navigate the Setup Menu.
- Use the ENTER button on the remote to confirm the selection.
- Other Keys to be used are displayed on screen throughout the menu.

Note: Some options in the Setup menu may not be available if a disc is being played. Please stop all play back to access all features.



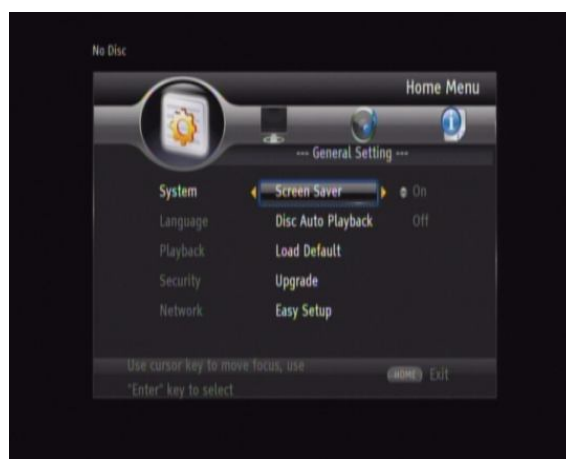
GENERAL SETTING

First shown screen is the General Settings menu. Use the UP and Down navigation button on the remote control to select the sub setting to change.

Use the Right navigation button to access the option.

The Current set option is marked.






Press the Left navigation button on the remote control to go back a level or the SETUP/HOME button to exit the Setup Menu entirely.



SETUP MENU

Menu	Feature	Option	Description
System	Screen Saver	ON	Starts Screen saver if no video is being played or not used for 60 seconds.
		OFF	Turns Screen Saver feature OFF
	Disc Auto Playback	ON	Playback of recognised discs starts when inserted.
		OFF	Playback of disc to be started manually.
	Load Default		Restores All settings on the BLU-BD1000 to factory default and launches the START-UP WIZARD
	Upgrade	DISC	Upgrade Player firmware By CD
		USB STORAGE	Upgrade Player Firmware by USB device
	Easy Setup		Launches STARTUP WIZARD
Language	OSD (On Screen Display)	ENGLISH	The Menu Language for the BLU-BD1000 is set at English only.
	MENU	ENGLISH SPANISH	Select the language you wish the Disc menu to automatically be displayed in.
	AUDIO	ENGLISH SPANISH DUTCH SWEDISH KOREAN	Select the language you wish the Disc audio to automatically be played in. Note: Selected language must be available on the disc being played. <i>Other language options also available.</i>
	SUBTITLE	ENGLISH SPANISH DUTCH SWEDISH KOREAN	Select the language you wish the movie subtitles to automatically be displayed in. Note: Selected language must be available on the disc being played. <i>Other language options also available.</i>

SETUP MENU

Menu	Feature	Option	Description	
Playback	Closed Caption	ON	Turns the Closed Caption feature ON	
		OFF	Turns Closed Caption feature OFF	
	Angle Mark	ON	Shows if extra scene angles are available on current disc. <i>(Use with ANGLE button on remote control)</i>	
		OFF	Will not show alternative Angles	
	Secondary Audio Mark (SAM)	ON	Turns the SAM feature ON for discs that contain this feature. Icons will be displayed on the screen when available.	
		OFF	Turns the SAM feature OFF for discs that contain this feature. Icons will not be displayed.	
Security	Parental Control	AUST Rating	Player Rating	
			OFF	Turns the Parental control features OFF
			KID SAFE	Only plays Discs classifieds as Kid Safe
			G	Only plays Discs classifieds as G and lower
			PG	Only plays Discs classifieds as PG and lower
			PG-13	Only plays Discs classifieds as PG-13 and lower
			PGR	Only plays Discs classifieds as PGR and lower
			R	Only plays Discs classifieds as R and lower
	Password = 0000		NC-17	Only plays Discs classifieds as NC-17 and lower
			ADULT	Only plays Discs classifieds as ADULT and lower

Note: Select a player rating that is equal to the Australian classification. E.g.: Selecting the **PGR** or **R** rating on the player will allow movies with the Australian **M** classification to be played.



DISPLAY SETTINGS

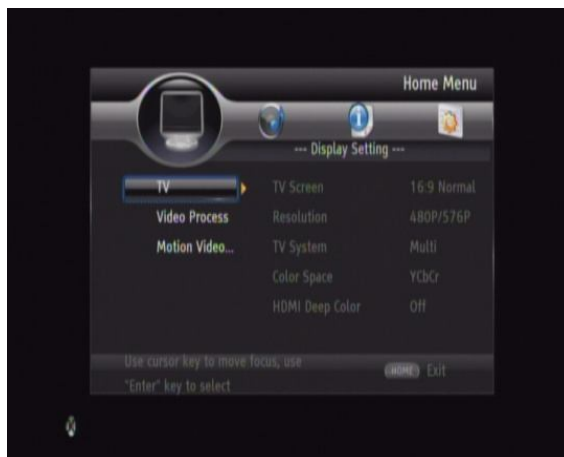
The Display Settings menu allows you to fine tune the way the BLU-BD1000 presents the video on your Television or monitor.

Use the UP and Down navigation button on the remote control to select the sub setting to change.

Use the Right navigation button to access the option.

The Current set option is marked.

Press the Left navigation button on the remote control to go back a level or the SETUP/HOME button to exit the Setup Menu entirely.



SETUP MENU

Menu	Feature	Option	Description
TV	TV SCREEN	16: FULL	Scales image to fill 16:9 screen
		16:9 NORMAL	Shows image without distortion
		4:3 PAN&SCAN	Scales image to fill the 4:3 screen
		4:3 LETTERBOX	Shows image without distortion
		Some content	<i>may appear distorted due to the original material</i>
	Resolution	AUTO	Resolution is set by TV with HDMI cable only
		480I/576I	720x480/576 Interlaced image
		480P/576P	720x480/576 Progressive Scan image
		720P	1280x720 Progressive Scan image
		1080I	1920x1080 Interlaced image
		1080P	1920x1080 Progressive Scan image
	TV System	NTSC	Output is in NTSC
		PAL	Output is in PAL
		Multi	Both formats are permitted. <i>Must be support by TV</i>
	Colour Space <i>(For TVs with this feature)</i>	YCbCr	The HDMI output uses YCbCr 4:4:4 colour space.
		YCbCr 422	The HDMI output uses YCbCr 4:2:2 colour space. Generally this is the colour space that is closest to the colour space encoded on the discs. (All discs are encoded in YCbCr 4:2:0 colour space and the video decoder decodes it into YCbCr 4:2:2.)
	HDMI Deep Colour <i>(For TVs with this feature)</i>	30 bits	Use the 30-bit per pixel Deep Colour mode.
		36 bits	Use the 36-bit per pixel Deep Colour mode
		48 bits	Use the 48-bit per pixel Deep Colour mode
		OFF	Do not use HDMI Deep Colour
VIDEO PROCESS	Sharpness	High	Sets the edge level detail to high
		Middle	Sets the edge level detail to medium
		Low	Sets the edge level detail to low.
MOTION VIDEO	Video Mode	Standard	Sets the display to standard
		Vivid	Brightens the video Display
		Smooth	Set the colour transitions to Smooth

Note: Please note that some of the Display Settings require a compatible television or monitor and connection method that supports those features. Please see the rear of this manual for more detailed information on some of the features and settings that are available.



AUDIO SETTINGS

The AUDIO Settings menu allows you to fine tune the way the BLU-BD1000 decodes the audio and presents the signal to your Television or Home Theatre system

Use the UP and Down navigation button on the remote control to select the sub setting to change.

Use the Right navigation button to access the option.

The Current set option is marked.



Press the Left navigation button on the remote control to go back a level or the SETUP/HOME button to exit the Setup Menu entirely.

Menu	Feature	Option	Description
AUDIO OUTPUT	HDMI	Bitstream	Digital Audio Output via HDMI will be in Bitstream format
		PCM	Digital Audio Output via HDMI will be multi-channel Linear PCM format.
		Re-encode	Recode PCM to DTS bitstream format
		OFF	Turns HDMI Audio output off
	Down Sample	48K	Sets the PCM down sample rate to 48Khz
		96K	Sets the PCM down sample rate to 96khz
		192K	Sets the PCM down sample rate to 192Khz
	DRC (Dynamic Range Compression)	Off	Turns DRC features OFF
		On	Turns DRC features ON
		Auto	Allows DRC to be set automatically

SETUP MENU

Menu	Feature	Option	Description
SPEAKER SETTING	Configuration	2.X	Adjust the Audio for 2.X Speaker setup
		3.X	Adjust the Audio for 3.X Speaker setup
		4.X	Adjust the Audio for 4.X Speaker setup
		5.X	Adjust the Audio for 5.X Speaker setup
		6.X	Adjust the Audio for 6.X Speaker setup (HDMI only)
		7.X	Adjust the Audio for 7.X Speaker setup (HDMI only)
	<i>Follow the on screen instructions to adjust the audio for your speaker set up.</i>		
	Test tone	More	Sends a Test tone to the current speaker setup
POST PROCESS	UpMix	OFF	Turns the Audio Post Processing OFF
		PL2	Set the Audio Post Processing to PL2
		NE06	Set the Audio Post Processing to NE06

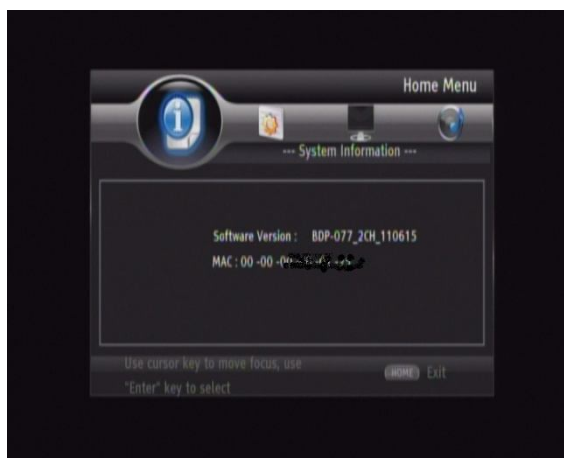
Note: Please note that some of the Audio Settings require a compatible television, monitor and Home Theatre system and connection method that supports those features. Please see the rear of this manual for more detailed information on some of the features and settings that are available.



SYSTEM INFORMATION

The System Information screen shows the current software version as well as the player MAC (Media Access Control) address.

Press the SETUP/HOME button to exit the SetUp menu and return the normal playback screen.

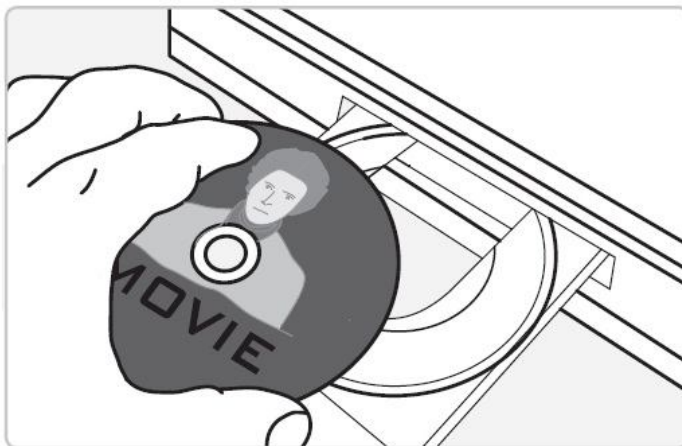


PLAYING A DISC

PLAYING A DISC

With the player setup it is time to play a disc in the BLU-BD1000 player.

- Press the **STANDBY** button to turn the play on
- Press the **OPEN/CLOSE** button on the remote or the player to open the DISC TRAY
- Place the disc in to the centre of the tray with the label facing up.
- Press the **OPEN/CLOSE** button on the remote or the player to close the DISC TRAY



- If the Disc does not begin playback automatically press the **PLAY** button on the remote or the remote controller or on the player.
- Use the **LEFT, RIGHT, UP** and **DOWN** navigation buttons on the remote to navigate the Disc menu and press the **Enter** button to confirm the selection.
- Please refer to the Remote control details on page 10 for available options during disc playback.

Note: Not all options on the remote control will be available on all discs. Some options require the content of information to be available on the disc itself to work. Please refer to the Disc case to determine available features or options on the disc.

OSD (On Screen Control)

Press the OSC button on the remote control during disc playback for control options. Use the **UP, DOWN, LEFT** and **RIGHT** buttons to navigate through the options. Press the **ENTER** button to confirm selection.

Numeric keypad may be used for some entries.



ON SCREEN CONTROL

Icon	BD	DVD	CDDA	MC	Description	OPTION
	✓	✓	✓	✓	Disc now playing	
	✗	✗	✗	✓	Current File	Select another file to player
	✓	✓	✓	✓	Current title or track number	Select a title or track to skip directly to.
	✓	✓	✗	✓	Current Chapter number	Select a chapter to skip directly to
	✓	✓	✓	✓	Playback time	<ul style="list-style-type: none"> • Current • Chapter remaining • Title remaining
	✓	✓	✓	✓	Playback type	<ul style="list-style-type: none"> • Normal • Random Chapter • Random Title • Random All
	✓	✓	✗	✓	Audio track	Disc content dependant
	✓	✓	✗	✗	Angle	Disc content dependant
	✓	✓	✓	✓	Subtitle	Disc content dependant
	✗	✗	✗	✓	Code Page	Displays Code page of current file.
	✓	✗	✗	✗	Subtitle Style	Disc content dependant
	✓	✗	✗	✗	Second Video (PIP)	Disc content dependant
	✓	✗	✗	✗	Second Audio	Disc content dependant
	✓	✓	✓	✓	Audio/Video Bitrate	Toggle between Audio or Video Bitrate display
	✓	✓	✗	✗	Still Off	Disc content dependant
	✓	✓	✓	✓	INS Search*	Fast forward at 2 x.
	✓	✓	✓	✓	INS Replay*	Fast rewind at 2 X.

BD=Blu-ray Disc; DVD = DVD; CDDA= CD Audio discs; MC = Media Center

***Press the PLAY button to resume normal playback.**

Note: Not features or options shown here may be available for all discs or files. Some features require the disc or file to contain extra content for these features. Please check the disc case or file source to determine if the feature are available.

DVD PLAYBACK

Creating and Using Bookmarks

(BD & DVD only)

The bookmark feature works for DVD and Blu-ray discs only.

1. Follow the instructions for Playing a Disc.
2. Press the **BOOKMARK** button on the remote control to bookmark the current point in the playing disc. *You can create up to 12 bookmarks.*
3. To access saved bookmarks, press and hold the **BOOKMARK** button for 5 seconds. *The on-screen bookmark menu will appear.*
4. Use the **NAVIGATION** buttons on the remote to select and view a saved bookmark and press the enter button to confirm the selection.

Programming a Disc

(DVD & CD audio only)

1. Follow the instructions for Playing a Disc.
2. While the disc is playing, press the **PROGRAM** button on the remote control. *A program menu will appear on the television.*



3. Press the **ENTER** button.
4. Use the **ARROW** buttons to select a title and chapter. Press the **ENTER** button.
5. Press the **PLAY** button to begin playing the programmed disc.

Cancelling a Program

(DVD & CD only)

1. While the disc is playing, press the **PROGRAM** button on the remote control.
2. Press the **RETURN** button on the remote control to clear the set program

MEDIA CENTRE

MEDIA CENTRE

The media centre allows some multimedia files to be played on the BLU-BD1000 Blu-ray player.

The files can be stored on compatible CD, DVD, USB flash drive or USB hard drive.

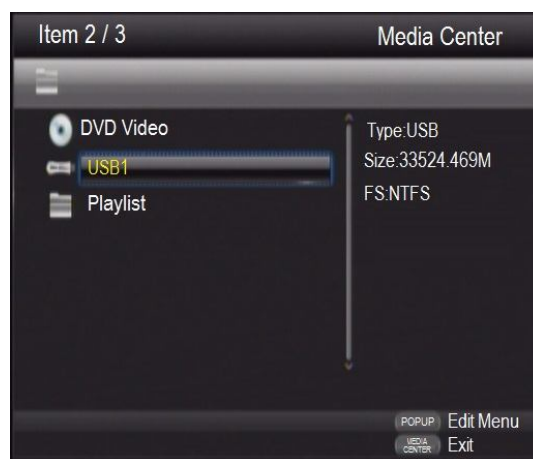
Load the disc containing the files in the tray or Plug the device containing the files in to the USB port on the front of the Player as described earlier in this manual.

Allow a few second for the USB device to be detected correctly and then press the Media Center Button on the remote control.

1. The left hand panel of the Media Center Screen shows the type of media in the tray or USB port.
2. The right hand panel show the Type, size and file system of the current selected item.

Use the **UP & Down** navigation buttons on the remote to select the media to open.

The Playlist folder will show all files that are currently added to the Playlist.



Playing a file

Once the device that contains the media files has been selected use the **UP & DOWN** navigation buttons to select the type of files to be viewed.

- **Photo:** Will only display compatible image files.
- **Music:** Will only display compatible Music files.
- **Video:** Will only display compatible Video files.

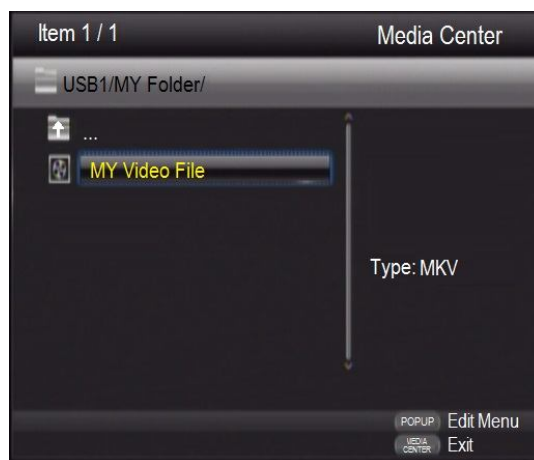


Press **ENTER** when media type has been selected or use the ... icon to go back a screen.

Use the **UP**, **DOWN** and **ENTER** buttons to navigate your way to find the file that you wish to play.

- The Path is listed in the top bar
- The File names are list in the left panel
- The file type is shown in the right panel.

When the correct file to be played is found press the **ENTER** button to begin playback.

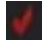


Press **ENTER** when media type has been selected or use the ... icon to go back a screen.

To control the playback of the file, please see **Remote Control** and **On Screen Control** section.

Creating a Playlist

Individual files or the contents of a folder can be added to a playlist. Once the playlist has been created it can be used to playback files one after the other.

Files can be added by selecting the file to be added and pressing the **Right** navigation button. The file will be marked with a .

Repeat until you have several files to add to the playlist.

Press the **POPUP/TITLE** button to show the Play list options.

- **Add To Playlist:** Adds the selected file(s) to the Playlist.
- **Select All:** Selects all files and folders in the current folder and adds to the Playlist.
- **Clear All:** Clears all tagged files from the Playlist.
- **Cancel:** Cancels Menu.

Use the **UP** and **Down** navigation buttons to make the selection and then press the **ENTER** button to confirm.

Note: *Playlists are created per file type. Mixed playlists cannot be created.*

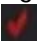
Playing a Playlist

Press the **Media Center** button on the remote control to launch the **Media Center**.

Use the **UP** and **Down** navigation buttons to select the **Playlist** option and press the **ENTER** button.

Use **UP** and **Down** navigation button to select the file to start playing from and then press the **ENTER** button.

During playback use the **PREVIOUS/NEXT** buttons to skip to the previous or next file in the playlist.

The playlist can be edited by selecting the file to be removed and pressing the **Right** navigation button. The file will be marked with a .



Press the **POPUP/TITLE** button to display the options menu for the playlist.

- **Remove From Playlist:** Removes the selected file(s) from the Playlist.
- **Select All:** Selects all files in the Playlist.
- **Clear All:** Clears all marked files.
- **Cancel:** Cancels Menu.

Use the **UP** and **Down** navigation buttons to make the selection and then press to the **ENTER** button to confirm.

NOTE: USB devices connected to the BLU-BD1000 must be formatted in the FAT32 or NTFS file system only.

GETTING THE BEST FROM THE PLAYER

GETTING THE BEST FROM THE PLAYER

PAL/NTSC

NTSC format discs contain 480 horizontal lines of information. Most TVs sold in Australia are designed to display content in the PAL format. PAL contains 576 horizontal lines.

Video from NTSC discs may appear to be of lower quality than PAL content.

DVD Up-Scaling

DVD up-Scaling over the component output is only available for unencrypted discs such as home video and consumer-created contents. Most commercially pressed DVD discs are CSS-encrypted and will be limited to 480i/480p resolution.

This restriction applies to the component output.

DVD Region Encoding

The BLU-BD1000 is region free for the playback of DVD. The BLU-1000 is compatible with DVDs from all regions. Please check the DVD for the correct language or subtitle content.

Blu-Ray Region Encoding

If the region number of a BD-Video or DVD disc does not correspond to the region number of this player, this player cannot play the disc.

Changing the Region Code

The region coding of the BLU-BD1000 can be changed using the remote control.

- Remove any disk that may be in the tray.
- On the remote control press the SETUP/HOME button
- Press 8-5-2-0 on the Numeric Keypad on the remote. The Screen shown to the right will be displayed.



Use the UP/DOWN navigation buttons on the remote control to highlight the disc type you want to change the region for

GETTING THE BEST FROM THE PLAYER

DVD Region Change

The BLU-BD1000 is factory preset to region 0 to play all regions and it is recommended that the DVD region not be changed unless absolutely necessary.

To change the region, please follow the steps as above and so the DVD Region Code box is highlighted.

Using the Numeric Keypad on the remote control, press the number of the region code for the disc to be played.

When the code is set, press the SETUP/MENU button on the remote control to return to the main screen and play discs as normal.

Acceptable Region codes are **1, 2, 3, 4, 5, 6** or **0**. If the code is set from 1 through 6, only discs coded for that region can be played and the Region code will need to be reset before disks from other regions can be played.

BD Region Change

The BLU-BD1000 is factory preset to region B. To play BD titles from any other region it is necessary to change the Region Code on the player before playback.

To change the region, please follow the steps as above and so the DVD Region Code box is highlighted.

Using the Numeric Keypad on the remote control, press the number of the region code for the disc to be played.

When the code is set, press the SETUP/MENU button on the remote control to return to the main screen and play discs as normal.

Acceptable Region codes are **1 (Region A), 2 (Region B), 3 (Region C)**. There is no **All** region code for Blu-ray discs.

Resolution

Blu-ray playback is possible through any connection method although the output resolution will be limited by the connection method the display or home theatre system or the content of the Blu-ray disc being played.

FULL-HD (1080p) is only possible on devices that support a resolution of 1080p. Please refer to the documentation of your display device to confirm the supported resolutions.

If you are connecting the BLU-BD1000 through other devices such as a Home Theatre System these also must be 1080p compatible.

GETTING THE BEST FROM THE PLAYER

Aspect Ratios

The Picture Aspect Ratio can be changed not only to suit the Display type but the content being played as well.



4:3 or Standard Aspect Ratio TV



16:9 or Widescreen Aspect Ratio TV

You can set the way that a Wide screen image will be displayed on the display device.

Setting the Aspect ratio as described in the main Set-Up menu allows you to adjust the way that you view the video from your BLU-BD1000 player. Please see below to see an indication of how different content is displayed.

	Original content	4:3 Letterbox	4:3 Pan & Scan	16:9 Normal	16:9 Full Screen
4:3					
16:9					

Note: Some movies are presented in 2:35.1 ratio to preserve the Theatrical release originality of the movie. These movies will present with a black bar across the top and bottom of the picture during playback. This is normal for these movies.

Some early DVD titles prior to main stream Widescreen television use a 4:3 non-anamorphic widescreen aspect ratio. When played on a 16:9 display, the content is shown in a small window with black borders on all four sides.

The top and bottom borders are encoded into the video. The left and right borders are added by the player to maintain the correct aspect ratio. For this type of discs the "Full Screen" zoom mode can be used to eliminate the borders.

Please check the original disc case to determine the aspect ration the movie is presented in.

GETTING THE BEST FROM THE PLAYER

HDMI Deep Colour

Deep Colour is an OPTION for **some** TVs or projectors that feature HDMI v1.3 inputs. Normally, each pixel of the video image is transmitted using 24-bit data (8-bit per channel for R, G, B or Y, Cb, Cr).

If Deep Colour is supported, each pixel of the video image can be transmitted using 30-bit (10-bit per channel), 36-bit (12-bit per channel) or 48-bit (16 bit per channel) data. The increased bit depth should result in smoother colour transitions and better gradients. The available options are:

- **30 bits:** Sets the colour depth at 32 bit mode.
- **36 bits:** Sets the colour depth at 36 bit mode.
- **48 bits:** Sets the colour depth at 48 bit mode.
- **OFF:** Turns Deep Colour Mode OFF

***Note:** Deep Colour mode may not be supported by all Televisions and these settings may result in no change to the picture quality being displayed.*

At this time no disc is encoded with Deep Colour. Enabling deep colour will not make colour richer but will help preserve the maximum precision as a result of video processing and picture control.

HDMI V1.3 or later cable must be used.

HDMI 1080P 24Hz

Also known as 24P, this option only applies to the HDMI output at 1080p resolution. Many Blu-ray Discs that originated from theatrical movies are encoded using 24Hz frame rate, the same number of frames per second as the original theatrical film. If the TV properly supports 1080p 24Hz, smoother motion can be achieved by enabling **1080p 24Hz Output** for such discs.

The available options are

- **ON:** Video encoded in 24Hz frame rate will be output as 1080p 24Hz without regard to whether the TV can support the 1080p24 signal or not. If the TV cannot support 1080p24, selecting this option will result in no video.
**Please ensure that your television support this features before selecting.*
- **OFF:** Video Encoded in the 24Hz frame rate will be converted to 50Hz (PAL) or 60Hz (NTSC).

GETTING THE BEST FROM THE PLAYER

Audio Setup

As well as the Audio setup as described earlier in this manual, if you have audio set up through the television or to a Home Theatre System, the BLU-BD1000 allows you to fine tune the audio output to best suit your environment.

From the **Main Setup** menu select **Audio Settings >> Speaker Settings >> Configuration**.

Select the number of speakers that you have connected to your system from simple stereo speaker (2.0) right up to full **DTS-HD High resolution** 7.1 channel system.

You will be asked to select the Channel mode for the selected option. These options will vary depending on what equipment you may have connected to the player via the HDMI cable. The BLU-BD1000 may automatically detect an HDMI connected Home Theatre System and select the number and type of audio channels available

Here is a basic diagram of Home Theatre speaker layouts.

F= Front Left and Right Speakers

SW= Sub Woofer: (1 or 2)

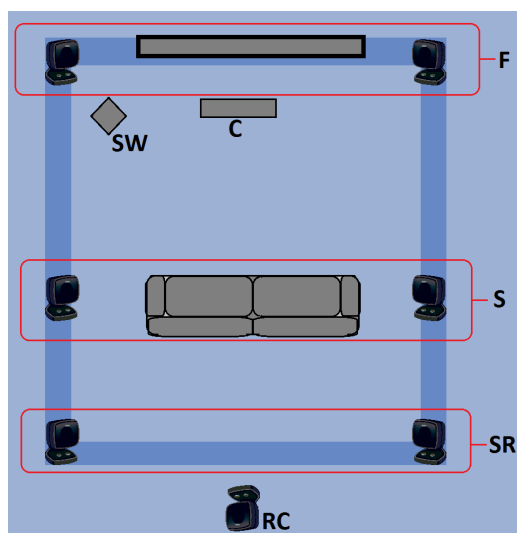
C= Centre: Voice channel

S= Surround Speakers left and right

SR= Surround Rear Speaker left and right

RC= Rear Centre Speaker

- | | | | |
|------------|-------------|------------|----------------------|
| 2.1 | F + SW | 5.1 | F + C + SW + SR |
| 3.1 | F + SW + C | 6.1 | F + C + SW + SR + RC |
| 4.1 | F + SR + SW | 7.1 | F + C + SW + S + SR |
- 6.1 & 7.1 through HDMI only**



The Audio configuration should be used in conjunction with the documentation for your Home Theatre or speaker setup. This documentation will show the best position, angle and distance for each speaker.

The Speaker settings in the Audio setup allow you to fine tune the audio and set the size trim and delay for individual speakers as they are placed in the room.

A test sound is also available to help set the position of the speakers in relation to your viewing position.

Note: *Speaker Identification and terminology may vary slightly between manufactures. Please read all documentation carefully to help identify all components and how they relate to terms used in this document.*

GETTING THE BEST FROM THE PLAYER

Blu-ray Discs may contain many types of audio signal formats, some of those are of the high resolution types such as Dolby TrueHD and DTS-HD Master Audio. Blu-ray Discs also have many optional audio components such as the Secondary Audio Program and menu clicking sound. The player's Audio Format Setup menu allows you to configure the audio output to meet your specific preference. The following chart provides a reference to what type of audio signal can be expected when Secondary Audio option is set to off.

Output Ports Setting Source Format	HDMI Output		Coaxial Output		Analogue Multi- Channel Output
	Bitstream	PCM	Bitstream	PCM	
PCM 2ch	PCM 2ch	PCM 2ch	PCM 2ch	PCM 2ch	2ch
PCM 5.1ch	PCM 5.1ch	PCM 5.1ch	PCM 2ch	PCM 2ch	-
PCM 7.1ch	PCM 7.1ch	PCM 7.1ch	PCM 2ch	PCM 2ch	-
Dolby Digital	Dolby Digital	PCM 5.1ch	Dolby Digital	PCM 2ch	-
Dolby Digital Plus	Dolby Digital Plus	PCM up to 7.1ch	Dolby Digital	PCM 2ch	-
Dolby TrueHD	Dolby TrueHD	PCM up to 192kHz 24-bit 7.1ch	Dolby Digital	PCM 2ch	-
DTS	DTS	PCM up to 7.1ch	DTS	PCM 2ch	-
DTS-HD High Resolution	DTS-HD High Resolution	PCM up to 7.1ch	DTS (core)	PCM 2ch	-
DTS-HD Master Audio	DTS-HD Master Audio	PCM up to 96kHz 24-bit 7.1ch or 192kHz 24-bit 2ch	DTS (core)	PCM 2ch	-

Note: If you use HDMI to connect audio to an HDMI A/V receiver or audio processor, it is important that you choose 720p or higher HDMI output resolution when playing high resolution audio content (DVD-Audio, SACD, Dolby TrueHD and DTS-HD Master Audio). According to the HDMI specification, the bandwidth available for audio is proportional to the total bandwidth used by video. At 480p/576p resolution, the HDMI specification can only support 2 channels of audio with high sample rate (up to 192kHz) or 8 channels of audio with standard sample rate (up to 48kHz). If you play high resolution audio content at the 480p/576p resolution, you may get reduced audio resolution, incomplete audio channels, or even no audio/video output at all. Choosing a higher output resolution such as 720p or above allows enough bandwidth for all high sample rate audio channels.

TROUBLESHOOTING

In order to prolong the service life of your player, it is recommended to wait at least 30 seconds before you turn it on again after switching it off.

- Remove disc and turn power off after operation.
- Some functions of the player may not be applicable to certain discs.
- Some discs with special features may not be fully supported by the player. This is not a malfunction of the unit.
- In case of player malfunction, please turn it off, wait for 30 seconds and turn it back on. If the problem still exists, please follow the troubleshooting instructions or contact Laser Technical Support.

Use this chart to resolve general operational problems. If there are any problems that you cannot resolve, please contact Laser technical Support

TROUBLESHOOTING

Symptom	Possible Cause	Solution
Will not turn on	Blu-ray data is still being loaded	Wait for up to 10 seconds for all data to be loaded. The unit will then boot and turn on correctly
No sound	Audio cable is not properly connected	Check audio cable, and then reconnect if necessary.
	Mute is activated	Press the MUTE button to cancel the mute.
	Volume is too low	Press the VOL + button to increase the volume to a preferred level.
	SACD is played and the audio connection is coaxial	This is not supported due to copyright restrictions of SACD. Please use the analogue or HDMI audio output.
	DVD-Audio is played and the audio connection is coaxial.	This is not supported due to copyright restrictions of SACD. Please use the analogue or HDMI audio output. Alternatively, you may switch to the DVD-Video playback mode.
No picture	Video cable is not properly connected	Check video cable; reconnect if necessary.
	TV input is not correctly selected	Select the input to which the player is connected.
	Video output format is not support by the TV	Select a proper output resolution that is supported by your TV.
	Video system is not supported by the TV	Set the correct TV System in the Setup Menu.

Symptom	Possible Cause	Solution
No colour	Video system is not supported by the TV	Set the correct TV System in the Setup Menu.
	Saturation set too low	Check the saturation setting on TV.
	Loose or damaged component video cables	If using component output, check that the three cables are all properly plugged in and not damaged. Make sure the colour of the plugs match the jacks on both ends.
	Incorrect video output port	If using composite video output, check that the cable is not incorrectly plugged into a component video jack.
Incorrect colour	Incorrect colour space setting	If using HDMI for video output, check the colour space setting on the TV and player.
Picture rolling or split picture	Video system is not supported by the TV	Set the correct TV System in the Setup Menu.
"No Disc" or "Unknown Disc" Error	No disc or incompatible disc loaded in player	Eject disc and check. Verify player functionality by inserting a known working disc.
	Dirty disc recording surface	Eject the disc and clean any dirt or fingerprints.
	Disc not properly loaded	Eject disc and make sure the label side is facing up and the record side is facing down.
	Condensation on the Laser pick-up head	Turn on the player, eject the disc and leave the player on for about an hour.
Remote control failure	Remote control is out of range	Use the remote control within the effective range. Point Remote at IR receiver on front Panel.
	Low battery	Replace the batteries.
Temporary function failure	Scratched or damaged disc is used	Replace the disc.
	Some functions are not available during playback	Stop playback completely, then try again.
	Interference from other devices	Identify interference by turning off other devices, and then relocate or replace the offending device.
Some Setup Menu items are greyed out	Some setup options cannot be changed while a disc is playing. Some setup options may be mutually exclusive with other setup options.	Fully stop playback by pressing the stop button twice, eject the disc and try the Setup Menu again.

TECHNICAL SPECIFICATIONS

TECHNICAL SPECIFICATIONS

Disc Types*	BD Rom (SL/DL) / DVD+RW/+R/+RW(SL/DL) CD/CD-R/RW/CD-DA, VCD JPEG	
Loader type	Sanyo loader	
HDMI	Version 1.3	
Blu-ray Playback	1080p / 1080i / 720p via HDMI	
HD output	Full HD output 1080/24p via HDMI	
DVD UPSCALING	720p/1080i/1080p via HDMI (non restricted content only)	
Colour System	PAL/NTSC/MULTI	
Audio System	Dolby Digital TrueHD/ Dolby Digital Plus Decoder	
	Dolby Digital / DTS decoder	
BD Region	Region B default (Manual convert to region free)	
DVD Region	Region Free	
Connections	Analogue Audio	Stereo LEFT/RIGHT (RCA)
	Digital AUDIO	Coaxial (75 OHM RCA) HDMI : Stereo, Up to 7.1 Channel
	Analogue Video	Composite (Yellow RCA) Component (Y/Pb/Pr 480i/480p, 720p/1080i for non restricted content only)
	Digital Video	HDMI Ver 1.3 PAL 576i/576p/720p/1080i/1080p/1080p24 NTSC 480i/480p720p/1080i/1080p/1080p24
	Input	1 x USB 2.0
General Specifications	Power Supply: ~ 100V – 240V, 50/60Hz AC Power Consumption: Up to 16W (less than 1W Standby) Dimensions: 360mm x 232mm x 49mm Mass: 1.6kg (Player Only)	
Operating Temperature	10°C - 35°C	
Operating Humidity	20% - 70% No condensation	

* Compatibility with user-encoded contents or user-created discs is on a best effort basis with no guarantee due to the variation of media, software and techniques used.

CONTACT INFORMATION

CONTACT INFORMATION

For more information on this product and technical support please visit

[HTTP://WWW.LASERCO.NET](http://www.laserco.net)

FOR OTHER ACCESSORIES AND PRODUCTS

<http://www.laserco.net>

Warranty Against Defects

Laser Corporation Pty Ltd ("Laser") warrants your new product to be free from defects in materials and workmanship for 12 months, from the date of purchase, provided that the product is used in accordance with accompanying recommendations or instructions where provided. The benefit of this warranty is in addition to your rights under the Australian Consumer Law and to other rights and remedies of the consumer under a law in relation to the goods or services to which the warranty relates.

Through a network of retailers and resellers, Laser will provide you with your choice of a refund, repair or exchange (where possible) for this product if it becomes defective within the warranty period. This warranty will no longer apply where the defect is a result of alteration, accident, misuse, abuse, normal wear and tear, neglect or improper storage.

Please retain your receipt as proof of purchase

How to make a product warranty claim:

Step 1: Find your receipt which proves the date of purchase. Where the date of purchase cannot be verified, your place of purchase or Laser will make an assessment based on the date of manufacture, the condition of the Laser Product and the type of defect.

Step 2a): Contact your place of purchase. They will assess the nature of the fault and refund or replace the product as per their store refund or warranty policy.

Step 2b): If your place of purchase cannot be contacted, then you can contact Laser . Customer Service with details of your defective Laser Product: Phone: (02) 9870 3355; or Email: service@laserco.com.au or online www.laserco.net/support/warranty (click on "Consumers (End Users)"). Our business address is at 1/6-8 Byfield Street, North Ryde, NSW 2113

Step 3: Laser . will issue you with a Return Authorisation (RA) number within 48 hours. When requested, send us the defective Product and a copy of your receipt. Laser will cover the cost of the return delivery.

Step 4: Wait for us to contact you. Once we have received your defective Laser Product for inspection, we will inform you of our assessment of your claim within 7 days. When we contact you, we will firstly let you know whether you have a valid claim under this Warranty, and if so, we will inform you whether your defective Laser Product will be replaced or repaired, together with the number of days you can expect to wait to receive your replaced or repaired Laser Product.

Our goods come with guarantees that cannot be excluded under the Australian Consumer Law. You are entitled to a replacement or refund for a major failure and compensation for any other reasonably foreseeable loss or damage. You are also entitled to have the goods repaired or replaced if the goods fail to be of acceptable quality and the failure does not amount to a major failure.



NAVIG[8]R

PRECISION
gaming accessories

CONNECT

naum8
GPS ESSENTIALS

