

LCD Multi-Media Player

User Manual

User Manual	1
Chapter One Introduction	2
1.1 Introduction	2
1.2 Packing list:	3
1.3 Summary of CF, SD, USB drives:	3
1.4 Programs-importing method by USB flash disk:	3
1.5 Scroll Text Editor:	4
1.6 Available Formats	4
Chapter Two Remote Controller and Menu Settings	5
2.1 Remote controller's setting:	5
2.2 Replacement of remote controller's battery :	6
2.3 Introduction to Menu on remote control:	7
Chapter Three Introduction to AD PlayList Editor Software	17
3.1 Overview:	17
3.2 Menu Introduction:	18
3.3 Introduction to creating play list:	18
3.4 Schedule: About schedule/ date/time operations	19
3.5 Multi Media Notes	20
3.6 Scroll Text:	21
3.7 Loading content into machine:	21
Chapter Four -Installation	23
4.1 Bracket installation on wall:	23

Chapter One Introduction

1.1 Introduction

Congratulations on your purchase of the LCD Media Display (Multi Media Player).

Please read this manual carefully and thoroughly before operating for the first time to ensure you utilize the many features this machine has to offer.

This unit can be operated like a regular Digital Picture Frame whereby you can insert an appropriate flash card and view the contents of the card.

Or you can utilize the ad play list editor software provided with the unit which will enable you to create and schedule your own media list incorporating photos, music and video.

However, in all cases, you still need to download content into the appropriate memory card only using the software provided with the unit (Ad play List Editor) other wise the unit will not play any content or files.

Important Points to note:

Unless absolutely necessary, refrain from removing and re-inserting this card too often as this may cause damage to the sensitive pins in the card slot and burn the machine's decoder board or driver board. If the pins are damaged or bent, this will render the CF card slot and unit inoperable.

The high speed CF card is the best option for displaying files, particularly video files, due to the multiple contact points between the unit and the card.

If you do have to remove the CF card temporarily, please ensure that when you re-insert it, you line the grooves on the CF card slot carefully with the grooves on the card (with the main label on the CF card facing towards you) and gently push it in.

Do not force it in under any circumstances.

The recommended method for displaying content in this frame is to copy the required content on to a USB drive, using the software provided, and then insert it into the unit.

The contents of the USB drive will then automatically download into the CF card in the unit. You can then remove the USB drive and lock the card compartment. The unit is now ready to display the desired content from the CF card

If you insert a SD card whilst the CF card is in the unit, it will not play the contents of the SD card (the CF card must be removed first).

If you prefer to use an SD card, then turn the power off, gently pull out the compact card and insert the SD card into the SD card slot. The AD Player will now play the contents of the card. The same applies if you wish to play content directly from the USB drive ie remove the CF card first.

However, in both instances, you must still download content into the SD card or USB drive using the software provided.

First use:

After removing the unit from the box, gently place the unit face down on a smooth surface.

Follow the instructions on the back of the back of the unit regarding the removal of the bracket.

Once this is completed, you can connect the power cord to the 3 pin socket input located at the bottom of the unit.

Then gently rest the unit face up on a smooth surface or against a solid object such as a wall, to test the unit.

Connect the power cord to the Mains Power.

The unit will automatically switch on (there is no on/off switch on the unit)

Once you are satisfied the unit is working properly, you are now ready to install the unit on to the wall (refer installation instructions on the CD).

Keep away from water when installing or using the product-strictly for indoor use

When removing and re inserting the CF card, turn the unit off first.

1.2 Packing list:

In the carton, you will find the following:

1. Multi-media player
2. Power cable
3. CD (User's manual, software for the ad player)
4. Remote Controller
5. 2 Keys for the card compartment
6. Wall Bracket for hanging

If there is any damage or shortage of accessories, please contact the place of purchase.

1.3 Summary of CF, SD, USB drives:

1. SD and CF cards can't be used at the same time
 2. When there is a CF card in the machine, contents in the USB flash drive will be directly imported to the memory card after plugging it into the unit.
 3. The unit will read contents of the USB flash drive directly when there is no CF or SD card.
 4. The unit will read contents of a SD card directly when there is no CF card in the unit
 5. When displaying video files, the CF card is the best option.
 6. When using a USB drive to download content or play files, there is no need to turn the unit off.
- In all cases, the contents are loaded into the LOOP and SYSTEM files when using the software provided.

1.4 Programs-importing method by USB flash disk:

You can import programs to the CF memory card via a USB flash disk, and plug in or pull it out while the machine is working.

1. Create programs using the Ad Play List Editor and copy on to a USB drive
2. Start up the machine, unlock the machine and plug USB flash disk in.
3. The contents of the USB flash disk will load into the memory card automatically.

4. After loading is completed, the machine presents the information of copied and skipped files and restarts automatically in ten seconds after pulling out USB flash disk. If there is no play list, the machine displays high definition pictures in a loop automatically; If there is a play list, the machine displays according to the contents of the play list.

1.5 Scroll Text Editor:

Text documents are stored in “LOOP” file, the root directory of memory card. “SYSTEM” file stores systematic font library. You must use “AD Play List Editor” editor software to add scroll text. (The specific operating steps are seen in specification of “AD Play List Editor” editor software)

1. Create a text file
2. Edit the words requiring display in created file (support both Chinese and English display)
3. Under single schedule, select “add text” check box to add a “scroll text” text file
4. You can add a “scroll text” text file for each schedule
5. Select create card after editing, and then save to the removable disk
6. After starting up, the lower part of screen displays the contents of text. (You can select on or off in the system menu)

1.6 Available Formats

This unit will support the following formats; please refer to this list to ensure that the content is compatible before playing

1. Video:
 - MPEG-1(VCD; SVCD; .mpg; .dat format);
 - MPEG-2 MP@ML (720x480@60Hz/720x576@50Hz 1.5Mbps-8Mbps);
 - MPEG-4 SP/ASP (720x480@60Hz/720x576@50Hz 100Kbps-2Mbps);
 - Div3.11/4.x/5.0x (compatible);
 - MPEG-4(.asf、.avi);
2. Audio:
 - LPCM (Sampling Frequency: 32-48KHZ, Accuracy: 16-24Bit);
 - MPEG1 Layer3 (Sampling Frequency: 32-48 KHz, Bitrate: 32-320Kbps);
3. Picture:
 - JPEG(Baseline: 5120x3840, Progressive: 2048x1536);
 - BMP;
4. Scroll Text:
 - .txt file (ASCII and GB2312 Character Set);

Chapter Two Remote Controller and Menu Settings

2.1 Remote controller's setting:

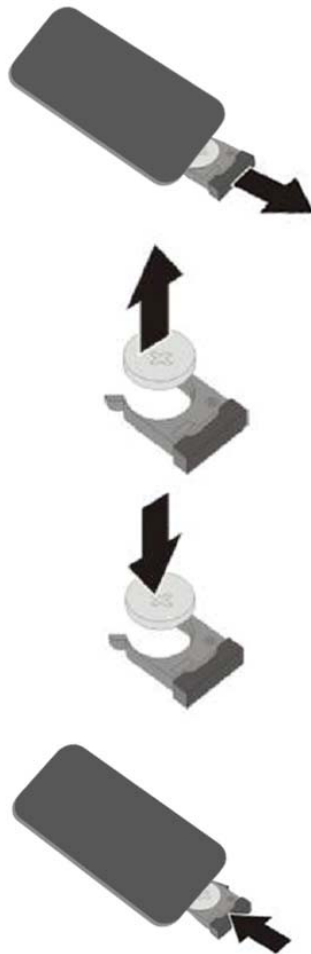


Remote instruction

Button	Description
POWER	Power on or off
⏮	previous program
⏭	Next program
+ (volume)	Raise volume
- (volume)	Lower volume
PLAY/PAUSE	Play/Pause, Confirm selection
↑	Up, navigation button
→	Left, navigation button
↓	Down, navigation button
←	Right, navigation button
STOP	Stop the selected file
SETUP	Menu setting

2.2 Replacement of remote controller's battery :

1. Open the remote controller's battery-cover
2. Pull out battery box
3. Take out dead battery
4. Install new battery correctly according to the positive and negative markings
5. Push the battery box back



2.3 Introduction to Menu on remote control:

The Remote will perform specific operations; however, some of these operations can also be performed via the ad player software

When operating the remote, always press the “STOP” button first and then press the “SETUP” button to enter menu setup.

Also note that whenever you use the remote to change any parameters whilst the unit is on, after parameters have been changed and you exit the set up function, press play to continue playing.

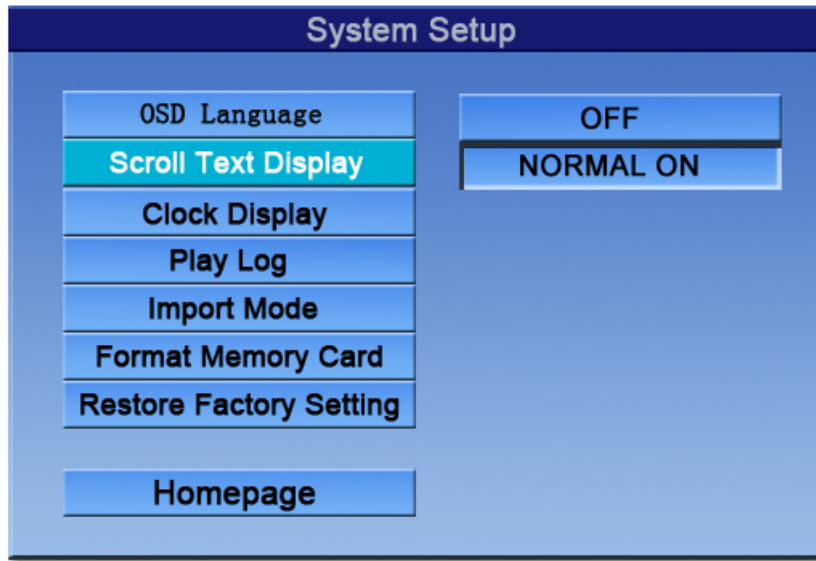
Menu setup: System Setup, Setup Date & Time, On/Off Time Setup, Volume setup, Setup client's machine number, Display Setup, Preview list and Exit Menu.



OSD (On Screen Display) Language:

English, Chinese (default English).

1. Press **Play/Pause** button in Set up menu's homepage to enter **System Setup**.
2. Select **OSD language**, move the cursor to right side by pressing **RIGHT** button, select Chinese or English by pressing **UP /DOWN** button and confirm the option by pressing **Play/Pause** button.
3. Press **LEFT** button to return to **OSD Language option**.
4. Select "**HOME PAGE**" by pressing **UP /DOWN** button to return to the main menu.

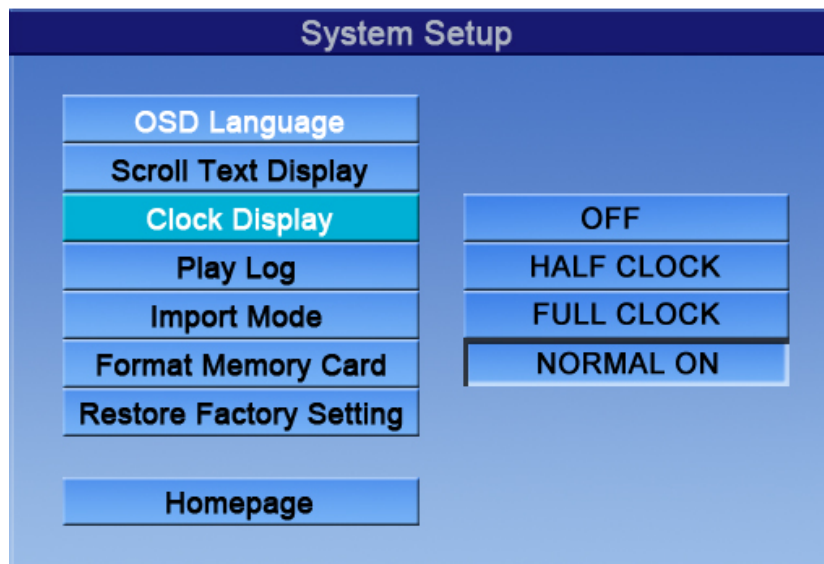


Scroll Text Display:

There are two options: "Normal On" and "Off ", Default: OFF. Supports Chinese and English.

If you select "OFF" mode, there will be no text; if you select "**Normal on**" mode, the system will display the scroll text automatically according to the "Scroll Text" text file in your play list.

1. Press **DOWN** button in **System Setup**, select "scroll text display".
2. Move the cursor to right side by pressing **RIGHT** button, select "**OFF**" or "**NORMAL ON**" by pressing **UP/DOWN** button and confirm the option by pressing **Play/Pause** button.
3. Press **LEFT** button to return to "scroll text display. Select "**HOMEPAGE**" by pressing **DOWN** button to return to the main menu.



Clock Display:

OFF, HALF CLOCK, FULL CLOCK, NORMAL ON

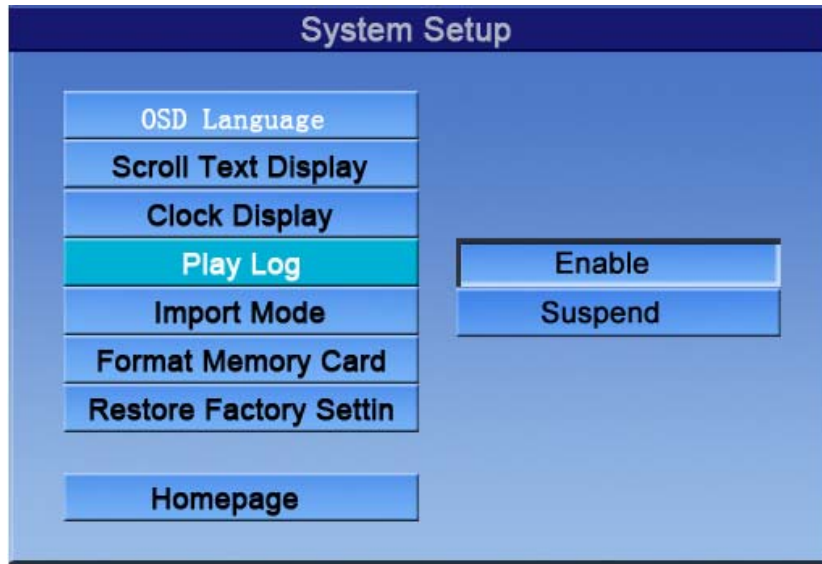
OFF: NO time will display on the screen.

HALF CLOCK: Displays time for 2 minutes every half hour.

FULL CLOCK: Displays time for 2 minutes every full hour.

NORMAL ON: Displays the time all the time.

1. Press **DOWN** button in **System Setup**, select “**Clock Display**”.
2. Move the cursor to right side by pressing **RIGHT** button, select “**OFF**” or “**NORMAL ON**” by pressing **UP /DOWN** button and confirm the option by pressing **Play/Pause** button.
3. Press **LEFT** button to return to “**Clock Display**”.
4. Select “**HOMEPAGE**” by pressing **DOWN** button to return to the main menu.



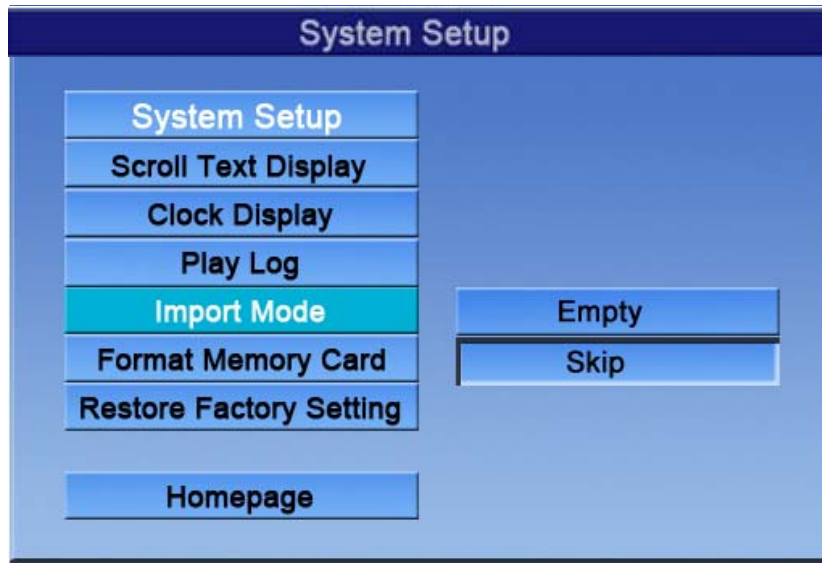
Play Log:(this is used to record your play list ie as proof that certain files have been played for advertising sponsors etc)

There are two options: “**Enable**” And “**Suspend**”.

When you select “**Suspend**”, player will not record the play log of media;

When you select “**Enable**”, system will create a “xxxxxx.LOG file” (the file is named by the ID number of machine), and records the name of playing media file, starting time and ending time automatically. The Log file is saved in the CF card and can be retrieved by either removing the CF card and uploading into your computer or inserting a blank USB drive into the unit-it will then automatically upload all information into the USB drive.

1. Press **DOWN** button in **System Setup**, select “**Play Log**”.
2. Move the cursor to right side by pressing **RIGHT** button, select “**OFF**” or “**NORMAL ON**” by pressing **UP /DOWN** button and confirm the option by pressing **Play/Pause** button.
3. Press **LEFT** button to return to “**Play Log**”.
4. Select “**HOMEPAGE**” by pressing **DOWN** button to return to the main menu.



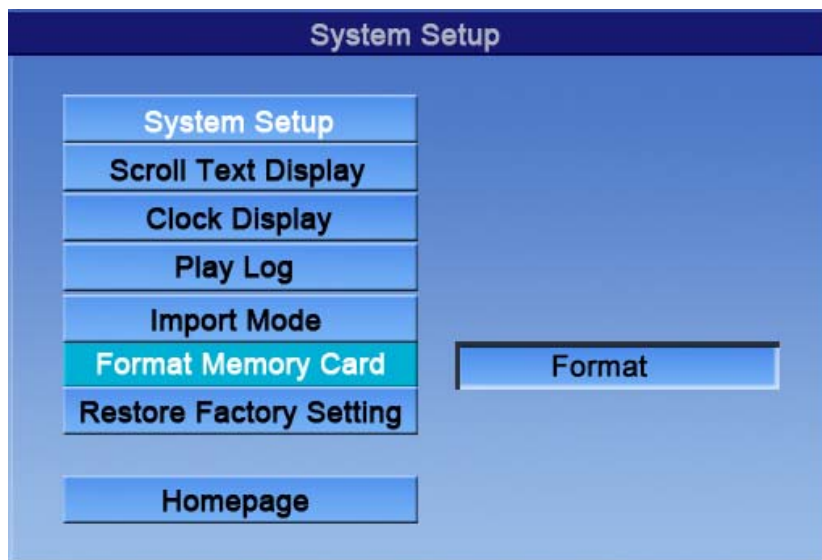
Import Mode: Before you download files

There are two options: “EMPTY” and “SKIP (CLEAR ALL and SKIP SAME)”

Empty before importing /leading in: It means that all files stored in the compact flash card will be emptied first before files in the USB stick is imported or loaded into the card

SKIP (when the files’ names are same): If the file name of media file in machine’s memory card is the same as the file name of media file imported/ lead in by USB flash disk, it will skip these files and only import new content into the card.

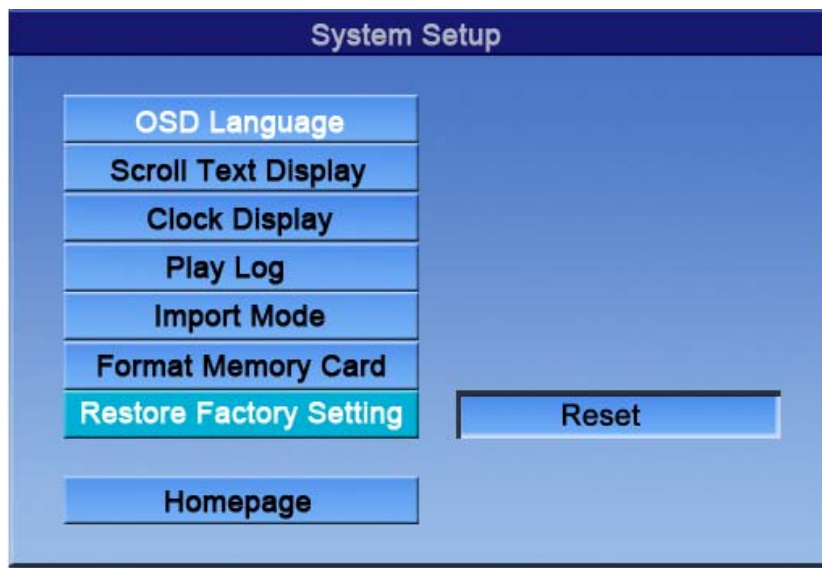
As a rule, it may be best to ensure that all files (new and old) are downloaded into the appropriate card when refreshing content



Format Memory Card:

Select “**Format**” to format CF and SD card.

This will clear the contents of the card in the unit



Restore Factory Setting:

This will clear all settings in the unit and restore it back to the factory settings-do not perform unless absolutely necessary.

Select "**RESET**" to restore all parameter to factory setting.

Default Settings:

OSD Language: English
Scroll Text Display: OFF
Clock Display: Normal on
Play Log: Suspend
Import Mode: Skip (when files' names are same)
System Volume: 50
On/Off Time Setup: Same Mode (Normal On)
Brightness: 50
Contrast Ratio: 50
Color: 50

Setup Date & Time

YEAR	MONTH	DAY	HOUR	MINUTE
2010	03	15	16	32

Setup Date & Time

You can setup **YEAR**, **MONTH**, **WEEK**, **HOUR** or **MINUTE** separately.

1. Press **DOWN** button in **Main Menu** to select "**Setup Date & Time**", and then press **Play/Pause** button to enter **Setup Date & Time** page.
2. Select the item needing modifying by pressing **LEFT/RIGHT** button, and modify it when the cursor on it lights.
3. Increase number by pressing **UP** button or decrease number by pressing **DOWN** button.
4. Select "**CONFIRM**" option by pressing **RIGHT** button to exit after finishing setting.

On / Off Time Setup

<div style="border: 1px solid black; padding: 5px; margin-bottom: 10px; text-align: center;">On / Off Control Mode</div> <div style="display: flex; flex-direction: column; align-items: center;"> <div style="border: 1px solid black; padding: 5px; margin-bottom: 5px; text-align: center;">Same Setting</div> <div style="border: 1px solid black; padding: 5px; margin-bottom: 5px; text-align: center;">Tuesday</div> <div style="border: 1px solid black; padding: 5px; margin-bottom: 5px; text-align: center;">Thursday</div> <div style="border: 1px solid black; padding: 5px; margin-bottom: 5px; text-align: center;">Saturday</div> </div> <div style="border: 1px solid black; padding: 5px; margin-top: 20px; text-align: center;">Return</div>	<div style="border: 1px solid black; padding: 5px; margin-bottom: 10px; text-align: center;">Same Setting Set By Week Mode</div> <div style="display: flex; flex-direction: column; align-items: center;"> <div style="border: 1px solid black; padding: 5px; margin-bottom: 5px; text-align: center;">Monday</div> <div style="border: 1px solid black; padding: 5px; margin-bottom: 5px; text-align: center;">Wednesday</div> <div style="border: 1px solid black; padding: 5px; margin-bottom: 5px; text-align: center;">Friday</div> <div style="border: 1px solid black; padding: 5px; margin-bottom: 5px; text-align: center;">Sunday</div> </div>
-------------------------------------------------------------------------------------------------------------------------------------------------------------------------------------------------------------------------------------------------------------------------------------------------------------------------------------------------------------------------------------------------------------------------------------------------------------------------------------------------------------------------------------------------------------------------------------------------------------------------------------------------------------------------------------------------------------------------------------------------------------------------------	---------------------------------------------------------------------------------------------------------------------------------------------------------------------------------------------------------------------------------------------------------------------------------------------------------------------------------------------------------------------------------------------------------------------------------------------------------------------------------------------------------------------------------------------------------------------------------------------------------------------------------------------------------------------

On/Off Time Setup:

The settings below enable you to set either specific on/off times for each day or the same time for the week

Setting it for each specific day means power is conserved and prolongs the life of the unit by not running the unit un-necessarily

Two settings: "Same Setting" and "Set by Week Mode".

When you select "Set by Week", open **On/Off Time Setup** to set time by week mode.

When select "Same Setting", open **On/Off Time Setup** to set time by same mode.

1. Press **DOWN** button in **Main Menu** to select "**On/Off Time Setup**" and then press "**Play/Pause**" button to enter "**On/Off Time Setup**" page.
2. Select "**ON/OFF CONTROL MODE**", Move the cursor to right side by pressing **RIGHT** button, and select the "**ON/OFF MODE**" by pressing **UP /DOWN** button and confirm the option by pressing **Play/Pause** button.
3. Press **LEFT** button to return to "**ON/OFF CONTROL MODE**".
4. Select "**HOME PAGE**" by pressing **DOWN** button to return to the main menu.

Three Settings: **Normal on, Normal off and Time On/Off**

Normal On: The unit will be on while the power is on. Even if you shutdown the unit using the remote controller, the system will start automatically 2 minutes later.

Normal Off: The Poster will be shutdown automatically when countdown 1 minute after the power is on or started by controller.

Time On/Off: There are three groups of settings in this function. Set the time by pressing **UP /DOWN** button.

Same Setting				
On/Off Control Mode		Time Switch		
	Status	starting time		ending time
Setting (1)	off	...	:	...
Setting (2)	off	...	:	...
Setting (3)	off	...	:	...
Confirm				
Return				

Same Setting:

1. Press **DOWN** button in **Main Menu** to select "**On/Off Time Setup**" and then press "**Play/Pause**" button to enter "**On/Off Time Setup**" page.
2. Select "**ON/OFF CONTROL MODE**", Move the cursor to right side by pressing **RIGHT** button, and select the "**Same Setting Mode**" by pressing **UP /DOWN** button and confirm the option by pressing **Play/Pause** button.
3. Select "**Same Setting**" by pressing **DOWN** button to enter the page of "**ON/OFF Same Setting**".
4. There are three groups of settings in **Time Setup**, and you can separately set "**Enable**" or "**Suspend**" for each group of setting , select the item needing modifying by pressing **LEFT/RIGHT** button , and adjust the time by pressing **UP /DOWN** button.

5. Select “**CONFIRM**” option to return to main menu after finishing setting.

Week Mode:

In the following interface, select the week needing setting.

Create different starting and ending time of machine for 7 days in a week.

Monday setting

On/Off Control Mode
Time Switch

	Status	starting time	ending time
setting(1)	off	... : : ...
setting(2)	off	... : : ...
setting(3)	off	... : : ...

Confirm

Return

Volume Setup

Default Volume
25

	Status	Volume	Start	End
Period(1)	off	25	... : : ...
Period(2)	off	25	... : : ...
Period(3)	off	25	... : : ...

Confirm

Return

Volume Setup

If required, you can vary the volume for different times(three periods) , and each period can be set “**ENABLED**” or “**SUSPENDED**” separately. When not set, it will play according to the default volume; the maximum default volume is 50.

1. Press **DOWN** button in **Main Menu** to select “**Volume Setup**” and then press **Play/Pause** button to enter “**Volume Setup**” page.

2. Select **Default Volume**, move the cursor to right side by pressing **RIGHT** button, and adjust the default volume level by pressing **UP/DOWN** button.

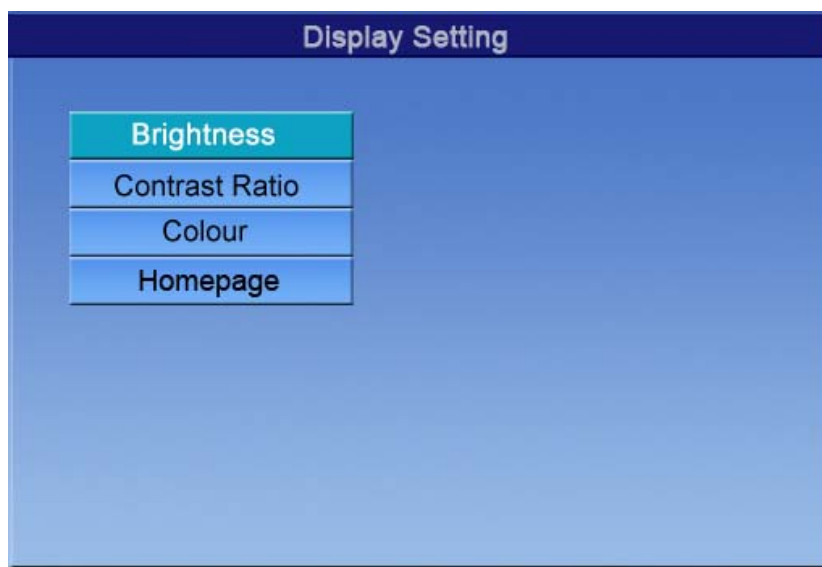
3. Select the period needing set button by pressing **DOWN** button, select the item needing modifying by **LEFT/RIGHT** button, and modify it when the cursor on it lights.
4. Select “**CONFIRM**” option to exit after finishing setting.



Setup client group number:

Set the ID number of the client used for creating LOG text file (refer to **Play Log function**).

1. Press **DOWN** button in **Main Menu** to select "Setup client group number" and then press **Play/Pause** button to enter "Setup client group number" page.
2. Select the item needing modifying by pressing **LEFT/RIGHT** button, and modify it when the cursor on it lights.
3. Increase number by pressing **UP** button while decrease number by pressing **DOWN** button.
4. Select “**CONFIRM**” option to exit after finishing setting.



Display Setting

Display Setting includes: **Brightness**, **Contrast Ratio** and **Colour** setting.

Default: 50 for each setting.

The best parameter has been set before leaving factory, do not change any parameters unless absolutely necessary

Press **DOWN** button in **System Setup** to select **Display Setting** and then press **Play/Pause** button to enter **System Setup** page.

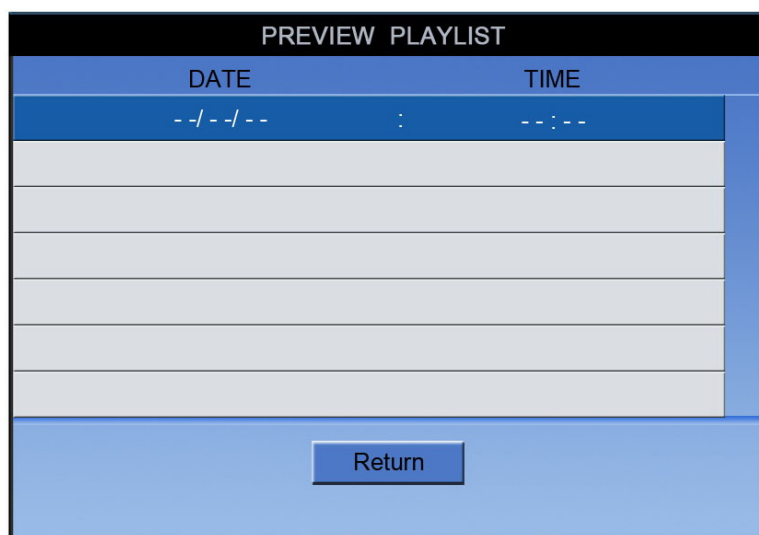
Then select "**Brightness**" option by pressing **UP /DOWN** button, and to save new data by pressing "PLAY/ PAUSE" button. AS the following picture.



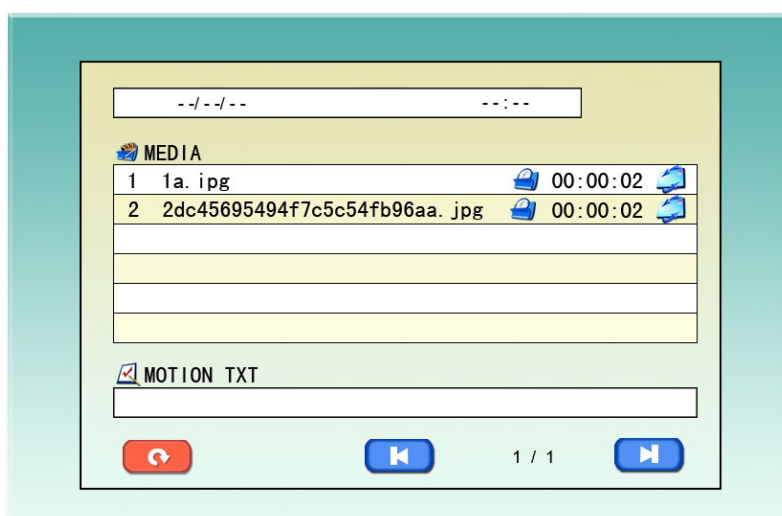
Increase number by pressing **Right** button while decrease number by pressing **Left** Button, and select **Play/Pause** option to exit after finishing setting.

Preview Playlist

This is used to view the schedules you have made before.



Select the line and view the detailed schedule for the media files.



Chapter Three Introduction to AD PlayList Editor Software

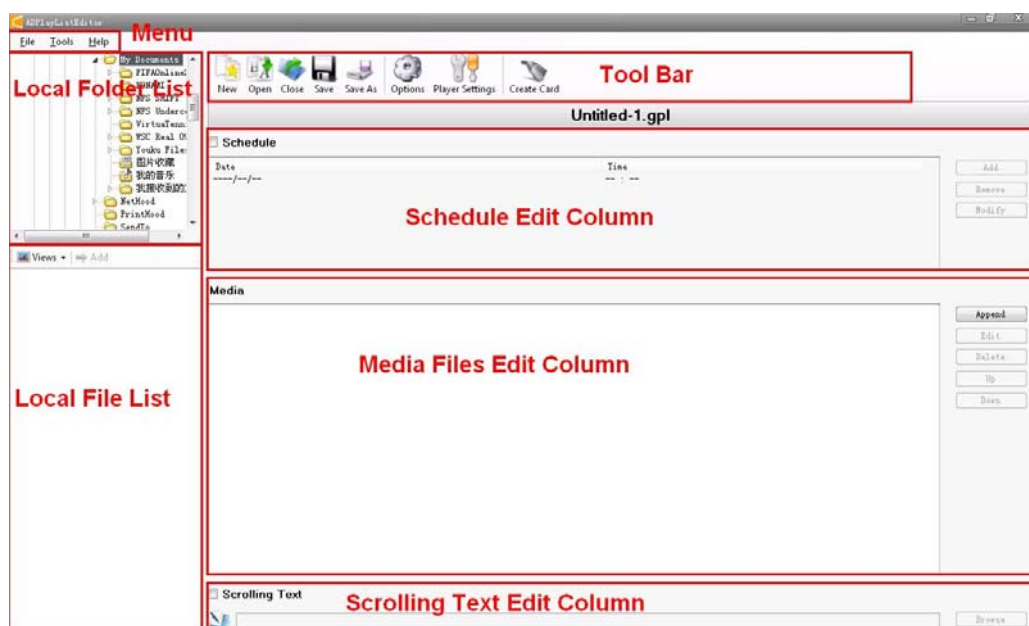
3.1 Overview:

This software has been designed specifically for this unit and when used properly, can save time and effort as it enables you to literally auto run all media content, how you want it and when you want it.

Insert the CD provided into your computer and open the CD files. Click on the Adplay List Editor, click “English” and it will install in your computer. (You may need to install Microsoft .Net Framework on to your computer before using the **ADPlayListEditor software**).

After installation, open locate the “**ADPlayListEditor**” icon on your desktop, right click on the icon, then select “run as administrator”. This will ensure no authorized operators can change the content.

The following display will appear:



Select “New (from top menu bar) then nominate the appropriate screen scale when prompted and click OK

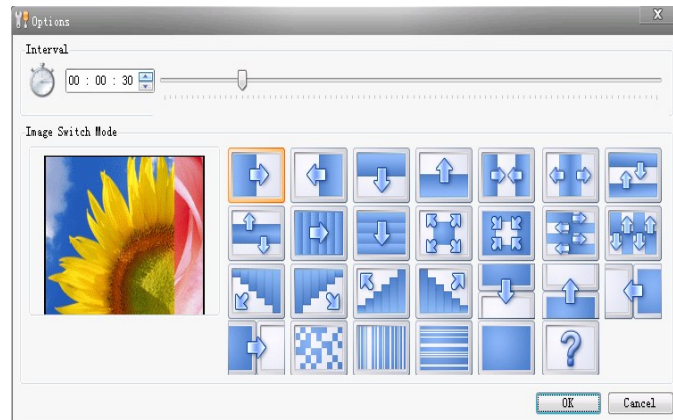
3.2 Menu Introduction:

1. File: Create, Open, Close, Save, Save as, Exit.

2. Tools: Option, Preview, Language.

1) Pictures interval and switch mode:

Click: tool— option, to setup interval time and switch mode's default.



2) Language: English, Chinese



3.3 Introduction to creating play list:

Select “New (from top menu bar) then nominate the appropriate screen scale when prompted and click OK

Then click the first row in the schedule, and this will enable you to set up the date and time for this schedule

You are now ready to add content in the first schedule row

Click and drag files from the LHS lower panel to the RHS lower panel.

Or highlight the desired file you and click “Add”

To drag multiple files, hold the ctrl key whilst highlighting files to be copied, then drag highlighted files across

All files dragged over to the lower panel will now belong to the first schedule

To set the parameters for each file, double clicking on the file (or pressing the Append button) will open a window which will allow you to set the time duration and slideshow mode

Slideshow Speed: Point the cursor to the hour/minute/sec box and then press the up/down arrow to set

Slideshow Mode: Point the cursor to the appropriate mode box and this will give you a preview of the mode ie fade, close door etc

Press OK on completion

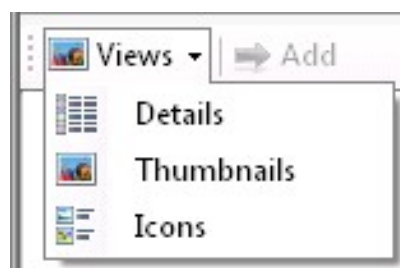
Then repeat for other files in this schedule

3) Select another schedule by hitting the Add button and repeat the process

4) You can then save this playlist for future reference by clicking “**SAVE**”, then saving it in the appropriate location or folder

Notes:

A. View: Picture modes



Points to note re the AdPlayList Editor

Two other options of adding media files: Multi-selection, All-selection

1) For multi-selection, select and add multi-media file by clicking needed media file with **Ctrl** button being pressed.

2) By pressing “**Ctrl**” and “**A**” buttons and then clicking the “**Add**” button.

3.4 Schedule: About schedule/ date/time operations

You can edit schedules during the creation of play lists

1) Check the **check box** of **schedule**.

2) Add new schedule by clicking “**ADD**” button in schedule edit bar.

3) Select a schedule at your will, click “**Edit**” button or dbl-click this schedule to edit it.

4) Select a schedule at your will, click “**Delete**” button to delete it.

After all schedules have been completed, click “Create Card’ **first**, THEN insert the USB drive into your computer and tick “all removable disks” and the two “D’s” should now be ticked

Press OK and the software will now download into the USB drive.

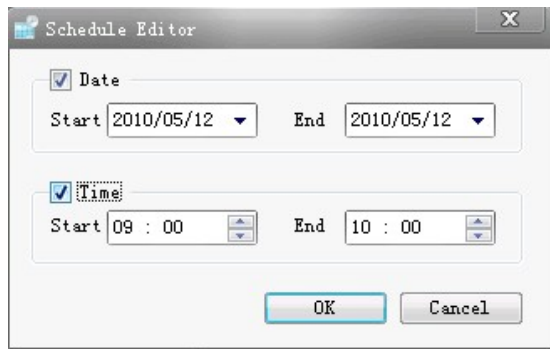
Do not insert the USB drive into your computer before you click create card as this will not work.

You will visually see the content downloading into to the USB drive on your computer screen.

Troubleshooting:

If the content does not load into the USB drive initially, try to reduce the number of files you are

trying to import. Then after successfully loading, you can re-insert the USB drive and load more files. If this procedure is not successful, re-boot the computer and start again.



3.5 Multi Media Notes

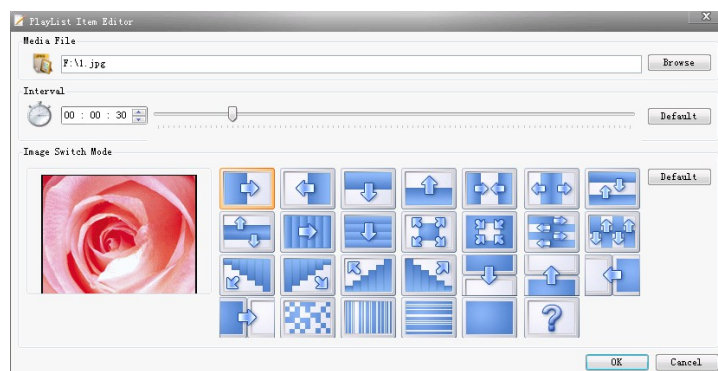
Different media files and texts can be added for each schedule.

Please note the following when setting schedules:

The upper panel controls the number of schedules.

The lower panel (media panel) controls the content in each schedule.

- 1) Unmarked Schedule means programs will be displayed according to the order files are added.
- 2) You can add another schedule only if the previous schedule has been nominated a start and finish time
- 3) Click on “Add” to add a schedule. No overlapping time allowed in two schedules.
A red exclamation mark will appear if this happens.
- 4) If there is a schedule setup for a playlist, programs in the list will be played on time; if not, programs in the default schedule will be played .
- 5) You can set a number of schedules, with each schedule holding approx 200 media files.
- 6) Add: Select the corresponding schedule, add new media file by clicking “**add**” button , and all added media will play in the corresponding period of schedule.
- 7) Edit: Select the media file in media edit bar, and click “**edit**” button to setup program path, interval time and switch mode, and also can edit the media file by double- clicking on the media file or clicking on the “Append” Button.

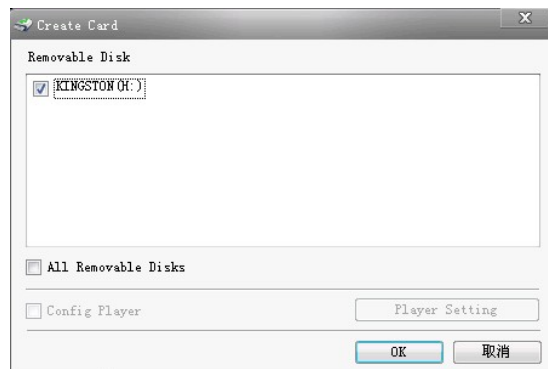


- 1) Remove: to remove selected media files in media edit bar by clicking “**remove**” button.
- 2) Up/Down: to adjust the order of program to be shown.

3.6 Scroll Text:

You can add a scroll text for every single schedule whilst editing the play list.

- 1) Create a “xxx.txt” file and edit the text which needs to be displayed, and then save.
- 2) When adding media files to the schedule, select the scroll text check box, and click "browse" button to select the path of “txt” text.
- 3) You can add a scroll text for every single schedule.



3.7 Loading content into machine:

Once you have created your schedule and imported it into a USB stick, plug it directly into USB's slot of the terminal of multi-media player; the system will automatically load the media files in USB flash disk and play list to the memory card in the machine.

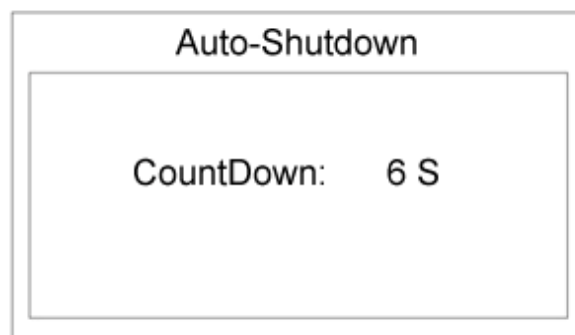
You do not need to turn the unit off when inserting a USB drive into the unit.

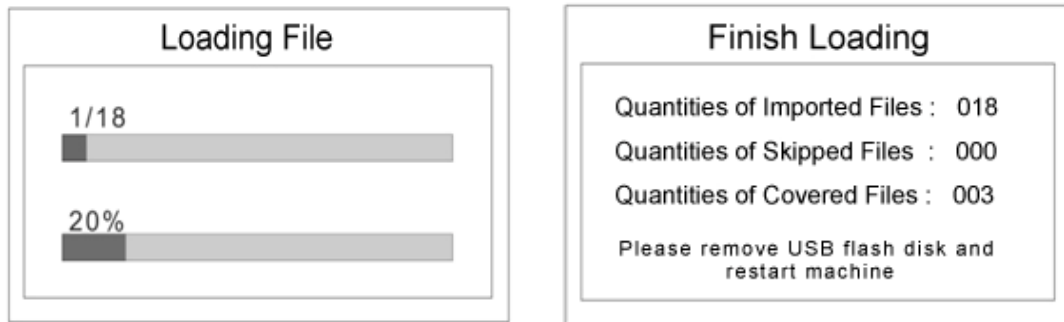
On completion of loading, the system will show the quantities of imported files, skipped files and covered files.

The on screen display will show the files loading into the unit.

If there are large files to be loaded, it may take about 30 seconds to one minute before you see this happening, please be patient

Remove the USB flash drive and the system will shutdown and restart automatically 10 seconds after removing the USB flash drive.





Troubleshooting:

If for some reason, the content from the USB drive does not load into the unit, try the following:

1. Use a different brand USB drive as the unit may not recognize certain USB brands **or**
2. Turn the machine off and carefully remove the CF card. Using a card reader and using the Adplay List Editor, download the required content directly into the CF card.(follow the previous instructions for loading content).

Ensuring the unit is still turned off, carefully re-insert the CF card back into the unit(with the main label on the CF card facing towards you).

Then turn the unit back on.

This process should have the effect of re loading the Loop and Display file back into the unit.

It should now be able to accommodate USB drives again.

If the unit still does not load content via any media cards,you can perform one of the following operation:

1. Restore Factory setting using the remote control (Page 12)
2. Shut down the AdPlay List Editor software and restart your computer.

Open the adPlay List Editor and re load the content into the USB drive or directly into the CF card .

Then follow the same procedure as before for loading content.

3. Uninstall and re-install the Ad PlayList Editor software again

Important note: Whenever content is loaded into a memory card/USB drive, the software provided (Adplay List Editor) will always load it in via the LOOP and SYSTEM files.

Hence, the unit will not play files from memory cards/USB drives unless it is done via the Adplay List Editor.

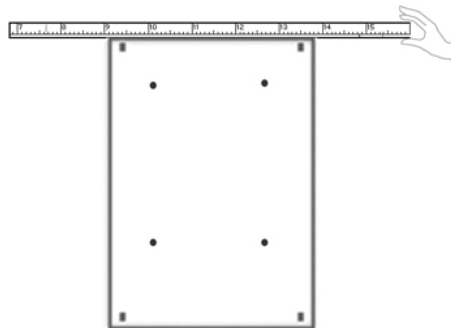
Chapter Four -Installation

4.1 Bracket installation on wall:

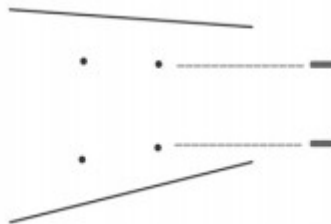
Follow the instructions located on the back of the bracket already fitted on to the back of the Ad Player.

You will need to remove this bracket to install it on the selected wall surface.

- Mark out the place where the bracket is going to be positioned on the wall
- Depending on where the unit is going to be installed, you will need either:
 - Metal Plasterboard anchors and screws x 4(for hanging on Plasterboard walls)
 - **(Please note that the unit weighs approx 8.5KG so you will need to ensure that each plasterboard anchor has a minimum load capacity of 5 KGS-it is better to over compensate)**
 - Wood screws(for attaching to studs or wooden frames)
 - Nylon anchors (for attaching to brick or mortar)
- You should always try and attach the bracket to at least 2 stud points for maximum safety-use a reliable stud finder to do this
- Also use a electrical wire finder to ensure you stay clear of any electrical wiring
- If in doubt please consult a qualified tradesman or get professional advice from your local hardware store



- Drill holes into the nominated area, taking care not to puncture electrical wiring



- Secure the bracket to the wall

Once the bracket has been positioned on the wall with the metal pegs facing towards you, carefully place the back of the unit into these pegs and bottom protruding metal piece, and push down gently to lock it into place.

Remember to attach the female socket into the bottom of the unit before you attach the unit to the bracket otherwise it may be difficult to do it after the unit is affixed to the bracket

Do not plug into the mains power until after the unit has been affixed to the bracket

Then tighten the screw located at the bottom of the unit in the card compartment (the same one which was loosened to remove the bracket from the player).

The player is now locked into the bracket and secured against theft of the unit

You can now connect the plug to the mains power and operate the unit