



EASYSense **1**Link user manual



CONTENTS

What is supplied?	2
Using EASYSense 1Link for the first time	3
Using EASYSense 1Link with the computer after initial setup	4
The EASYSense software overview	4
Using <i>Smart Q</i> Sensors	6
Technical information	8
Updating EASYSense 1Link's firmware	9
Warranty	10

Copyright: all rights reserved.

This manual may be copied for use within the premises of the Licensee on condition that it is not loaned, sold or used outside the Licensee's premises.

Data Harvest's policy is to continually improve products and services, so we reserve the right to make changes without notice. It is acknowledged that there may be errors or omissions in this publication for which responsibility cannot be assumed. No liability will be accepted for loss or damage resulting from use of information contained in this manual or from uses as described.

Document No: DO228 (Issue 1)

What is supplied?

The **EASYSense** software
with Quick Start Guide

A standard A to
mini B USB cable

The **EASYSense**
1Link interface

A long sensor lead



What else is required?

Smart Q Sensors for capturing data.

Please visit our website
(www.data-harvest.co.uk) or contact your
supplier for an up-to-date list of *Smart Q*
Sensors.



Using EASYSense 1Link for the first time

EASYSense 1Link is used connected to the USB port on a computer. The data from any *Smart Q* Sensor connected to EASYSense 1Link will be transmitted immediately to the computer and displayed on the computer's screen using the applications in the EASYSense software.

Note: Do **not** connect EASYSense 1Link to the USB port until after the EASYSense software has been installed.

Step 1:

Install the EASYSense software, if it is not already on your computer. For details of how to install and operate this program, please refer to the instructions provided with the EASYSense software. Make sure EASYSense 1Link is **not** connected to the USB port during this installation.

EASYSense 1Link requires **version 2.8** or above of the EASYSense software. (The version number can be verified in About from the Help menu).

Step 2:

Install the EASYSense 1Link USB drivers.

- Connect the mini plug of the USB cable to the USB input on EASYSense 1Link.
- Connect the 'flat' standard USB plug to a USB port on your computer.
- Windows will automatically detect a new device and install the drivers.

Step 3:

Connect the *Smart Q* Sensor being used to EASYSense 1Link. See page 7.

Step 4:

Open the EASYSense software program.



The first time the EASYSense program opens a 'Select Program Level' window will automatically open. Select a suitable user's level.

- Level 1 is aimed at 'start' level (e.g. up to 9 years old).
- Level 2 is aimed at 'mid' level (e.g. 9 – 15 years old).
- Level 3 is aimed at 'exam' level (e.g. 15 years plus).

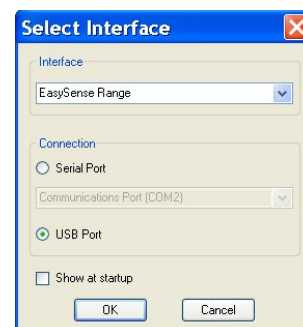
Note: The program level can be altered at anytime using the Level icon once a logging option has been opened.



Step 5:

An Interface option window will open.

1. Select the Interface as **EasySense Range**.
2. Select the method of connection as **USB Port**.
3. If you use different interfaces or methods of connection, tick the 'Show at startup' option so you can check your current selection and make any adjustments as necessary each time **EASYSense** opens.
4. Click on OK. The program will save your selection so it will be automatically configured when next used.



When a connection is established the Home page will open. Select one of the experiment modes i.e. EasyLog, Graph, Meters, Scope, Snapshot or Timing.

Using EASYSense 1Link with the computer after initial setup

- Connect **EASYSense 1Link** to the computer using the USB cable.
- Connect the *Smart Q* Sensor being used to the shaped socket.
- Open the **EASYSense** software program.
- Select one of the recording modes e.g. EasyLog from the Home page. The sensor connected will automatically be recognised and calibrated.

Note: It is best to connect 1Link to the USB port on the computer (so it is powered) before connecting a sensor (especially when connecting high current sensors such as Motion or CO₂).

The EASYSense software overview



Home is the main navigation page. On this page are the icons for all of **EASYSense 1Link's** logging options.

Note: Setup Remote and Retrieve Remote will not be available as 1Link only operates while connected to the computer.

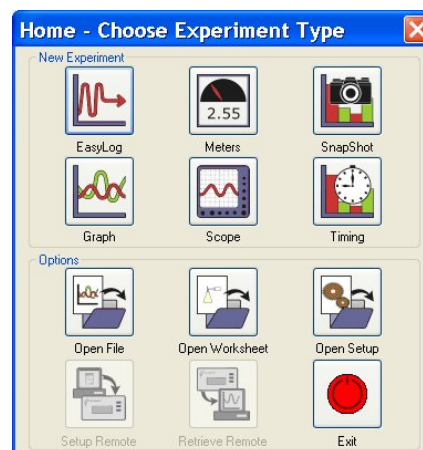


EasyLog

EasyLog will open pre-set to record sensor values **continuously** as a line graph until stopped.



Click on the **Start/Stop** icon to begin recording. Recording will start with a time span of 30 seconds and when this has elapsed the time will double automatically. This will continue until the recording is stopped by clicking on the **Start/Stop** icon.



The Home page
(Level 2 & 3)



Meters

The Meters window gives an introduction to sensors and how they respond to change. Up to four section displays can be open at any one time.



The program will open with live data from the sensor in a Numeric window. Click on the appropriate picture icon on the Menu bar to open other section displays i.e. Gauge, Colour Change or Bar.

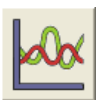
Click on the Start/Stop icon  to stop recording.



Snapshot

Snapshot will open pre-set to record sensor values on demand (**manual sampling**) with a bar graph display.


When the logging wizard opens click on Finish. Click on the Start/Stop icon  to begin recording. Click in the graph area to record the sensor's current value. Click on the Start/Stop icon  to stop data being recorded.




Graph

Graph is pre-set to record sensor values against a **chosen time span** as a line graph display. The window opens with the real time logging wizard from which the time span, interval between samples, start condition and triggers for the recording can be chosen. (The options available will depend on the level you have selected to work at). When the selection has been made, click on Finish.

Note: The fastest interval between samples is 20 μ s (microseconds) [FAST log and Pre-trigger].

Click on the Start/Stop icon  and the recording will start when the start condition you have selected is met e.g. if None was the selected trigger, then the recording will start as soon as the Start/Stop icon is clicked. The recording will stop when the selected time span has passed.

If you want to stop a recording before it has run the full term, click on the Start/Stop icon  icon.





Scope

Scope will open an oscilloscope type display.

- When the logging wizard opens click on Finish.
- In the panel on the right select a suitable time base.

Note: The fastest interval between samples is 20 microseconds (μ s).

- Click on the Start/Stop icon  to begin recording. If the interval is set to 20 ms or slower (roll mode) the graph trace will be redrawn continuously on the screen until you click on the Start/Stop icon  when the trace will 'freeze'.



Note: Scope is not available when the User Level is set to Level 1.



Timing

Timing allows students to study Time, Velocity, Acceleration, Momentum and Kinetic Energy relationships using a switch-type (digital) sensor such as a Light gate.

The recording wizard will open from which how the data 'at A' is recorded, the parameters of the experiment, units & decimal places for the calculated results and the data columns to display can be chosen. (The options will depend on the user level selected). When the selection has been made, click on Finish.

Click on the **Start/Stop**  icon and a reading will be displayed when a change in signal is detected from the digital sensor. Click on the **Start/Stop** icon  to stop data being recorded.



Open File

Used to load a previously saved .SSL or .sid file. Locate the correct file and click on open.



Open Worksheet

To select and open a worksheet and its accompanying experimental set up file.



Open Setup

To select and open an experimental set up file. This will pre-set the software for a specific operation. (Level 2 and 3 only)

Using *Smart Q* Sensors

Smart Q Sensors

Data Harvest manufactures a wide range of *Smart Q* Sensors for use with the **EASYSense** range of loggers. Each *Smart Q* Sensor incorporates a microprocessor that stores the calibration and auto-identification data. This dramatically simplifies set up procedures and allows for greater flexibility when logging data.

Smart Q Sensors can be divided into two main types:

1. Analogue Sensors, which measure physical changes such as light level, temperature and sound. This physical value is converted into an electrical signal, which is measured by **EASYSense** 1Link and communicated to the computer.
2. Digital switch-type Sensors, which are capable of measuring ON/OFF conditions. Typical digital sensors include Light gates and Timing mats.

Note: *Smart Q* Sensors are available to purchase separately. Please visit our website (www.data-harvest.co.uk) for further information.



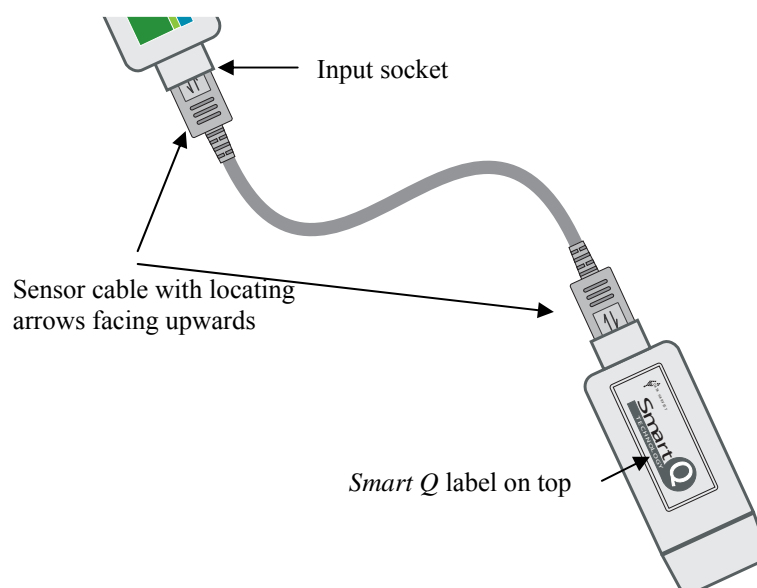
Smart Q Sound sensor



Smart Q Light gate

Connecting


The housing for most *Smart Q* Sensors is fitted with a mini DIN socket. The sensor lead supplied is used to connect a *Smart Q* Sensor to **EASYSense 1Link** (for specific instructions see the sensor's user manual).



For the majority of *Smart Q* Sensors:

- Hold the sensor housing with the *Smart Q* label showing on the top.
- Push one end of the sensor cable into the shaped socket on the sensor housing with the locating arrow on the cable facing upwards.
- Connect the other end of the cable to the shaped socket on **EASYSense 1Link** (with the locating arrow facing upwards).

All *Smart Q* sensors are automatically calibrated but some also have multiple ranges. If the sensor has more than one range and the currently selected range is not suitable for your investigation:

- Start the **EASYSense** program and select one of the logging modes from the Home page e.g. EasyLog, Meters, Graph or SnapShot.
- Select **Sensor Config** from the **Settings** menu.
- Select the sensor from the list and click on the **Change Range** button.
- The current range will be highlighted. Select the required range and click on OK.
- Close Sensor Config. Click on New  and then Finish for the change in range to be detected.

The range setting will be retained until changed by the user.

Technical information

Powering

EASYSense 1Link is powered by the USB port whilst connected to the computer.

Note: EASYSense 1Link can only be connected directly to a computer's USB port or by using a **powered** USB hub. It will not work with an unpowered hub (EASYSense 1Link requires an output current of 500 mA).

Specifications

USB compatible communication V1.1 – full speed

12 bit sampling resolution

Fastest sampling speed: 20 μ s (50,000 samples per second)

Digital timing: accurate to 4 μ s

Sensor inputs: 1

Operating range: 0 - 40°C and 0 to 95% RH (non-condensing).

Care and maintenance

- Clean with a damp cloth, do not immerse in water or detergent.
- EASYSense 1Link is suitable for use in an operating range of 0 - 40°C and 0 to 95% RH (non-condensing).
- Do not subject to extreme heat or cold or leave in a location where it will get wet.
- EASYSense 1Link is not waterproof.
- There are no user serviceable parts inside EASYSense 1Link.

Trouble shooting

If EASYSense 1Link fails to respond to the computer, disconnect the sensor and the USB cable. Re-connect the USB cable, then the sensor and try again.

If the product still fails to respond, please contact the Technical Support department at Data Harvest. Please provide details of:

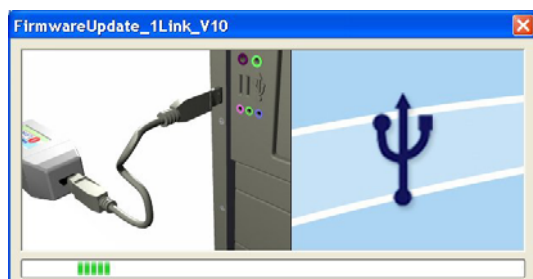
- The computer platform it is being used with
- The software and its version number
- A description of the problem being encountered

If possible, telephone from a location where you can operate EASYSense 1Link with the computer.

Updating EASYSense 1Link's firmware

Occasionally Data Harvest may release updated firmware which will contain improvements or new features. Updates will be made available from the Data Harvest website.

To update the firmware of EASYSense 1Link:



Step 1. Copy the English Firmware Update for 5530 EASYSense 1Link onto the hard disc of your computer and run the .exe.

Step 2. Connect EASYSense 1Link to the computer using the USB cable.



A progress bar will indicate EASYSense 1Link is being programmed.

WARNING: Do **not** disconnect 1Link during this re-programming stage or it may be seriously damaged.



A **tick** will indicate if the process was successful.

To repeat the process, connect another EASYSense 1Link and click on the update window.



A **cross** will indicate that an error occurred. Click in the update window to try again.

Step 3. Disconnect EASYSense 1Link and exit the program.

Warranty

EASYSense 1Link is warranted to be free from defects in materials and workmanship for a period of 12 months from the date of purchase provided it has been used in accordance with any instructions, under normal laboratory conditions. This warranty does not apply if **EASYSense 1Link** has been damaged by accident or misuse.

In the event of a fault developing within the 12 month period, **EASYSense 1Link** must be returned to Data Harvest for repair or replacement at no expense to the user other than postal charges.

Note: Data Harvest products are designed for **educational** use and are not intended for use in industrial, medical or commercial applications.



WEEE (Waste Electrical and Electronic Equipment) Legislation

Data Harvest Group Ltd is fully compliant with WEEE legislation and is pleased to provide a disposal service for any of our products when their life expires. Simply return them to us clearly identified as 'life expired' and we will dispose of them for you.

Data Harvest Group Ltd., 1 Eden Court, Leighton Buzzard, Bedfordshire LU7 4FY
Tel: +44 (0)1525 373666, Fax: +44 (0)1525 851638
e-mail: sales@data-harvest.co.uk, support@data-harvest.co.uk
Website: www.data-harvest.co.uk