

i5330

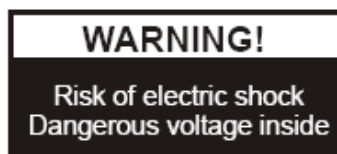
Document Camera



USER MANUAL

Please read this manual carefully before operating the document camera and keep it for reference

PRECAUTIONS

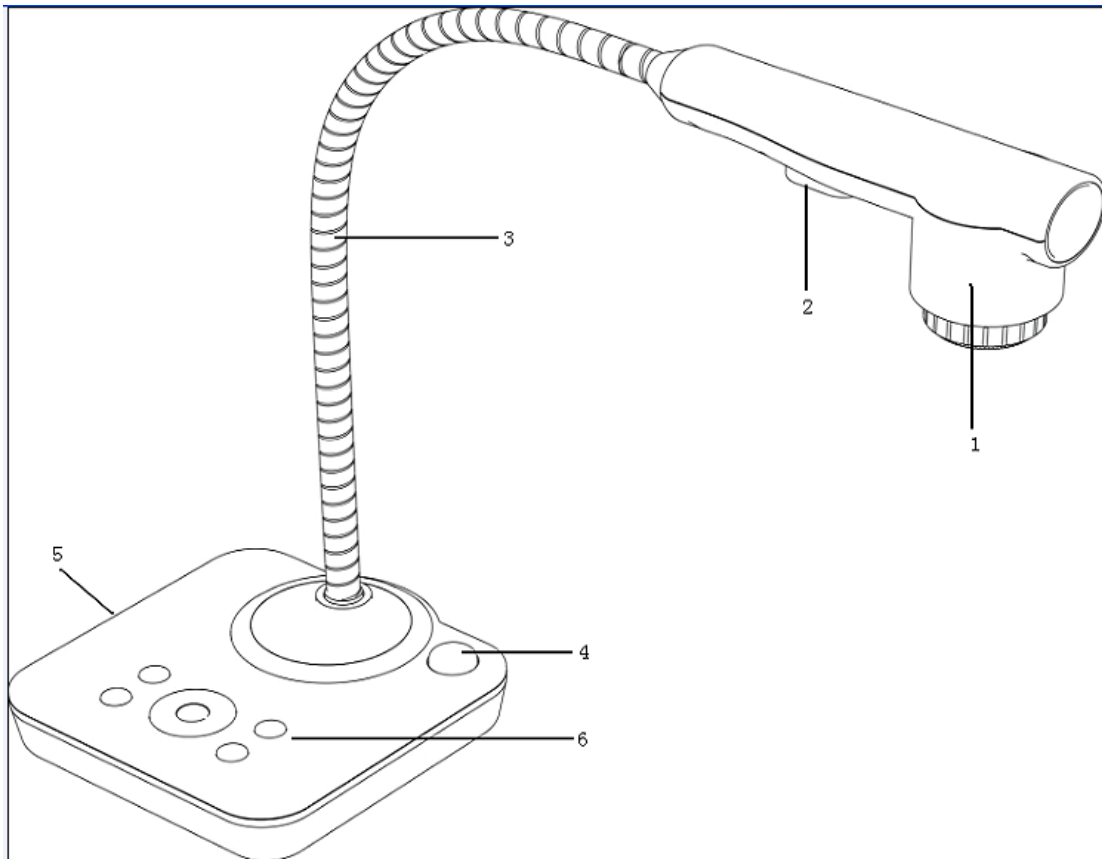


NOTICES: PLEASE READ CAREFULLY BEFORE USE

- ◆ Use the document camera under the rated electric conditions.
- ◆ Do not place the document camera on any unstable surface. It may fall and cause injuries or damages.
- ◆ Do not place this device directly under sunlight or near heaters.
- ◆ Do not place this device near water.
- ◆ Keep the camera away from acid or alkali gas.
- ◆ Do not place this document camera in humid, dusty, windy or vibrant locations.
- ◆ The recommended operating environment is:
 - Temperature: 0°C--45°C(32°F-113°F)
 - Humidity: less than 75%
- ◆ Always unplug BEFORE cleaning the device. Use a damp soft-cloth for cleaning. Do not use volatile solvent.
- ◆ When this equipment functions abnormally, such as smoke, smell, noise, immediately unplug and call for professional assistance.
- ◆ Unplug the document camera or shut off the power when not in use.

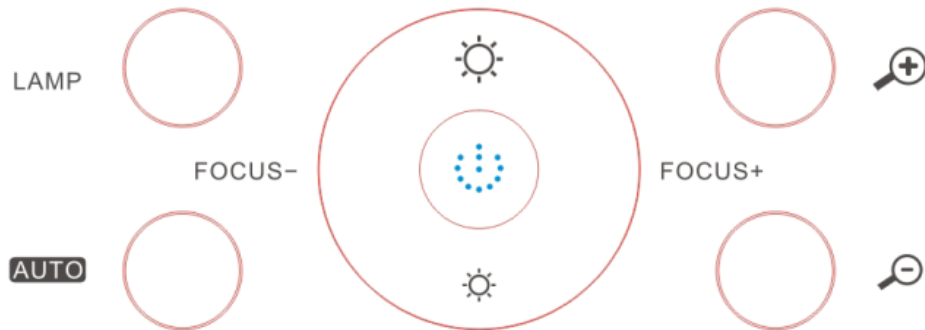
USER MANUAL	1
1. PARTS IDENTIFICATION	4
2. CONTROL PANEL	5
3. INPUTS AND OUTPUTS	5
4. REMOTE CONTROL	6
5. CONNECTIONS	8
5.1. COMPUTER CONNECTION	8
5.2. VGA OUTPUT CONNECTION.....	8
6. COMMUNICATE WITH COMPUTER	9
6.1 COMPUTER REQUIREMENTS	9
6.2 USB CAMERA.....	9
7. FEATURES	15
LIGHT.....	15
ZOOM IN AND ZOOM OUT	15
FOCUS ADJUSTMENT.....	15
BRIGHTNESS ADJUSTMENT	15
WHITE BALANCE ADJUSTMENT	15
TEXT/PICTURE MODE.....	16
IMAGE FREEZE.....	16
IMAGE MIRROR.....	16
SPLIT SCREEN.....	16
IMAGE SAVE.....	16
IMAGE RECALL.....	16
USB 2.0 PORT.....	16
USB IMAGE CAPTURE AND VIDEO RECORDING.....	17
8. SPECIFICATION	18
9. TROUBLE-SHOOTING:	19
10. PACKING LIST	27

1. PARTS IDENTIFICATION



1. **Camera**
2. **LED light box**
3. **Goose neck**
4. **Remote control IR receiver**
5. **Side panel**
6. **Control panel**

2. CONTROL PANEL



1. **POWER:** Turn on/off the power.
2. **LAMP:** Turn on/off the LED light.
3. **AUTO:** Carry out auto focus, color adjustment and white balance.
4. **FOCUS+/-:** Adjust focus manually, focus far and focus near.
5. **BRIGHT+/-:** Image brightness control.
6. **ZOOM+/-:** Image zoom in and zoom out control.

3. INPUTS AND OUTPUTS



1. **DC 12V:** Power input.
2. **VGA OUT:** VGA(RGB) signal output(15 pin D-SUB).
3. **USB:** Capture image into a connected computer via provided software

4. REMOTE CONTROL

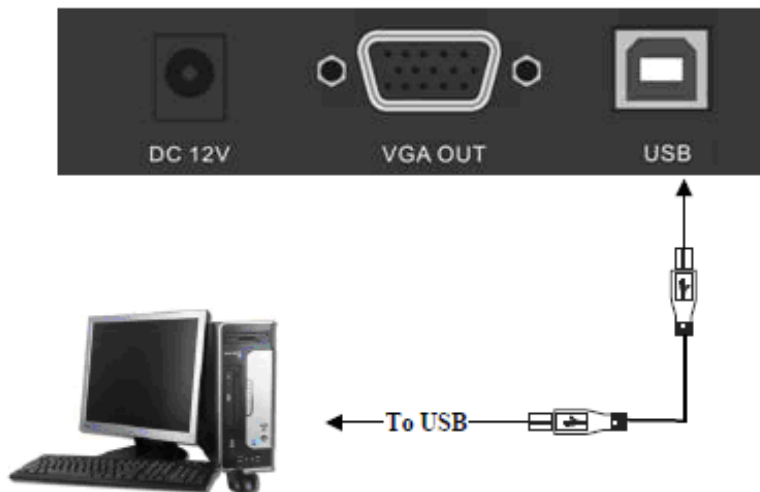


1. **Save:** Capture the image in display.
2. **Recall:** Image recall mode enabled, display the saved images.
3. **Lamp:** Turn on/off the LED light.
4. **Split:** Split screen, enable the comparison between the frozen image and live image.
5. **Page down:** Saved image page down when image recall mode is enabled.
6. **Page up:** Saved image page up when image recall mode is enabled.
6. **Mirror:** Output right-and-left, up-and-down mirror image.
7. **Freeze:** Freeze/unfreeze the image.
8. **T/P:** Switch the output image between text mode and picture mode.
9. **Red+/-:** Image chroma control (red).
10. **Blue+/-:** Image chroma control (blue).
11. **SXGA/XGA:** Switch the output signal between XGA and SXGA.

12. **Home**: Activate when it makes the focus curve and optics center adjust.
13. **Sharp+/-**: Image sharpness control.
14. **Auto**: Carry out auto focus, color adjustment and white balance.
15. **Computer**: Activate when it makes the focus curve
16. **Video**: Activate when it makes the focus curve
17. **Zoom+/-**: Image zoom in and zoom out control.
18. **Focus+/-**: Adjust focus manually, focus far and focus near.
19. **Bright+/-**: Image brightness control.

5. CONNECTIONS

5.1. COMPUTER CONNECTION



5.2. VGA OUTPUT CONNECTION



6. COMMUNICATE WITH COMPUTER

6.1 COMPUTER REQUIREMENTS

The PC's hardware and software configurations shall not be less than the following requirements:

Operating system: Windows XP

CPU: PIV1.8G

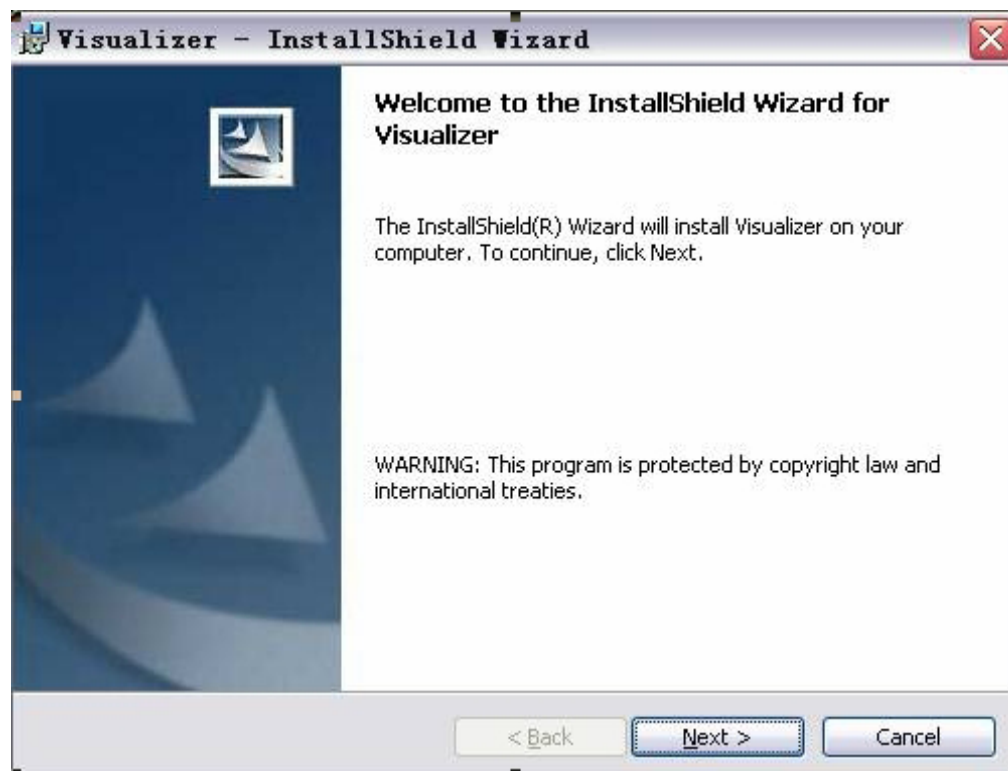
Physical memory: 512M

Video memory: 64M

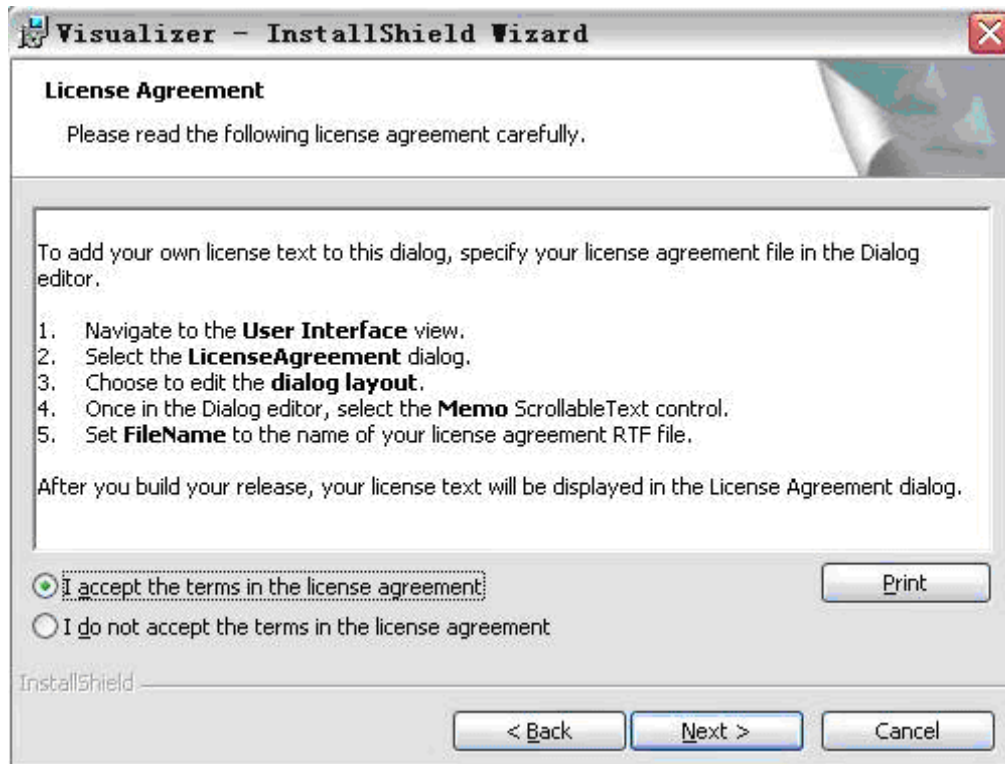
6.2 USB FUNCTION

1、SOFTWARE INSTALLATION

Click to run the software installation package, the following dialogue appears, click "Next":



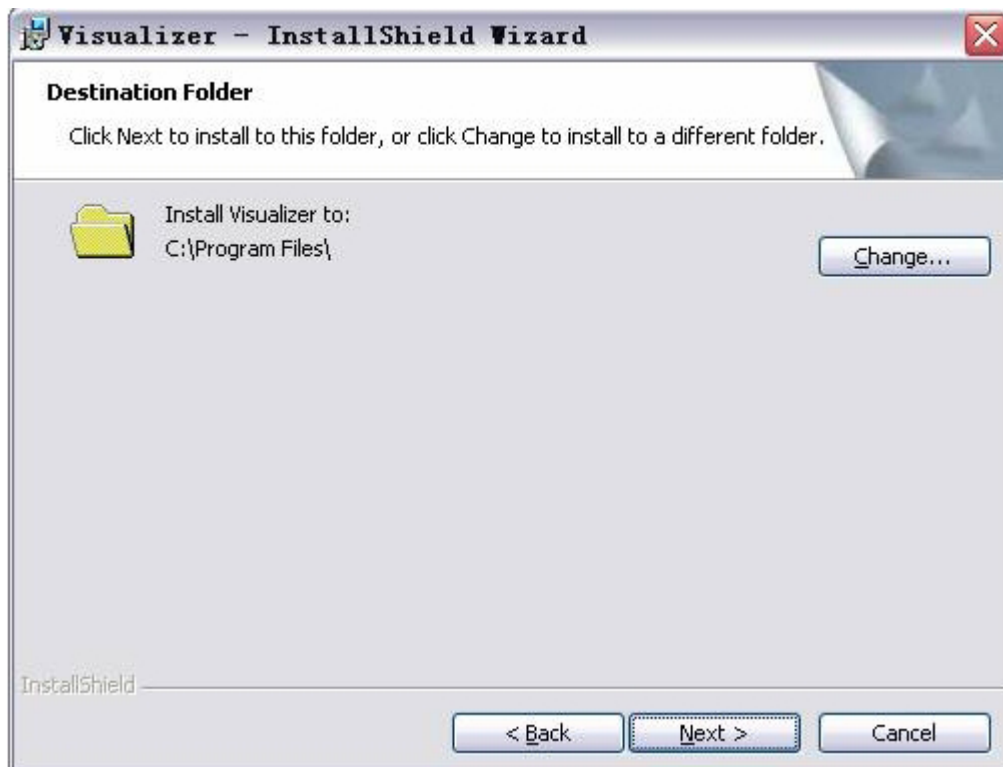
Read the terms, Select "I accept the terms in the license agreement." Click "Next", as the following figure.



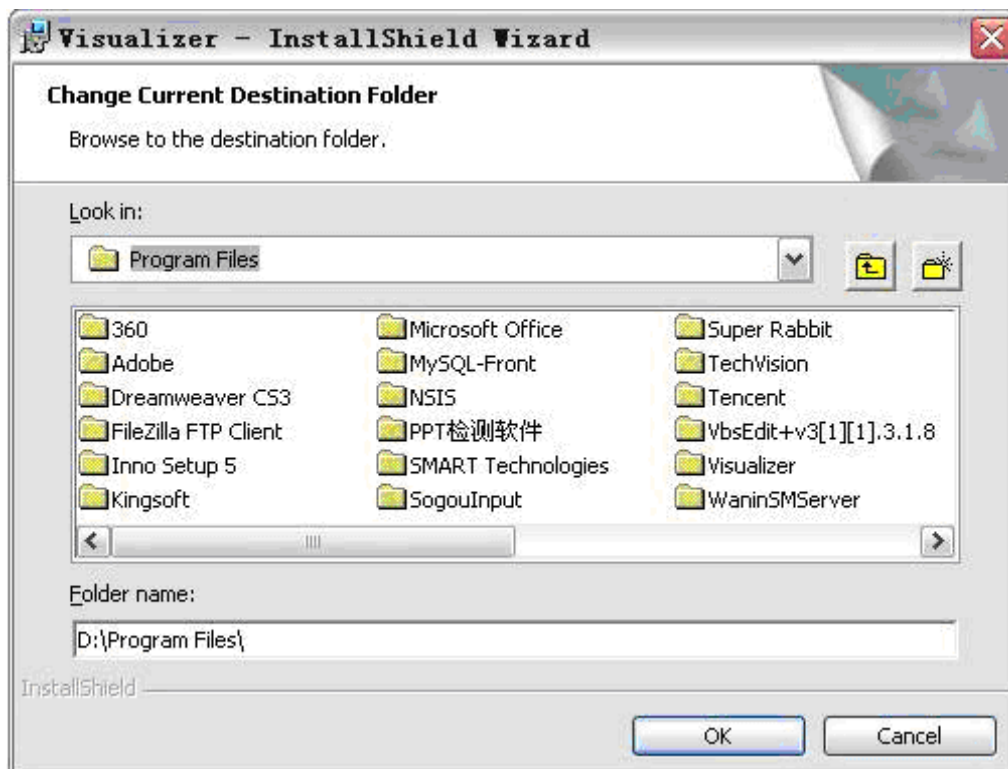
The following dialogue box appears, click "Next":



The default installation directory is Program Files, C: \ Program Files \, you can select a different installation directory, as shown:



Click "Change" to change the directory, as shown:



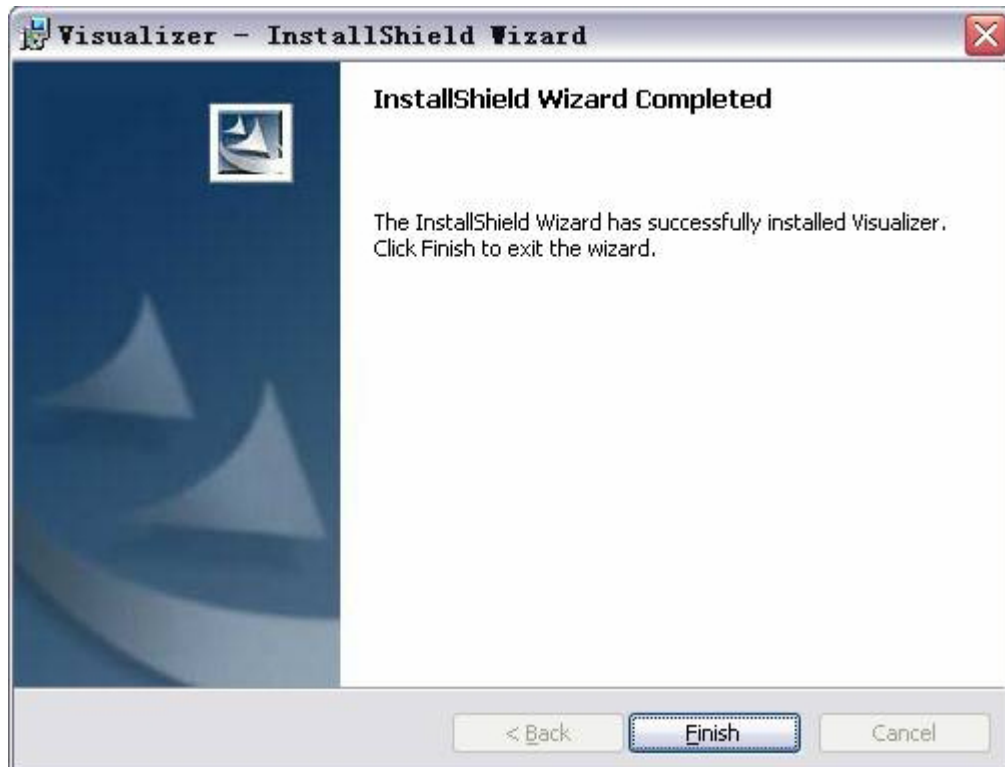
Click "OK", the following figure appears. Click "Next".



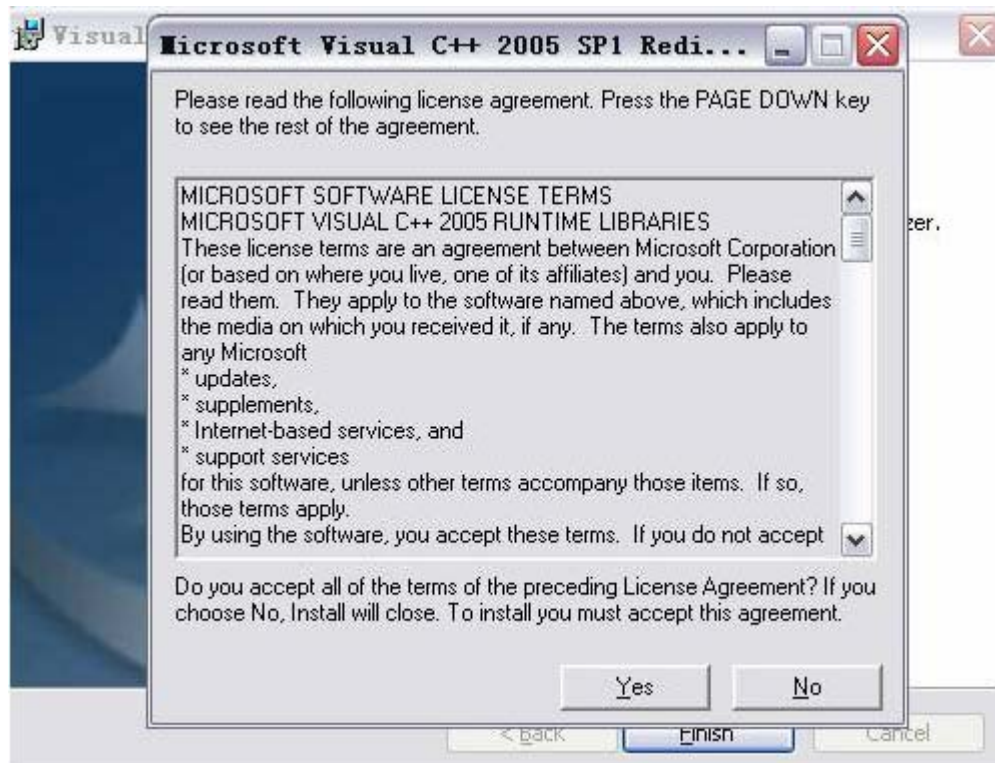
Click "Install" to complete installation, as shown:



Click "Finish" to complete the installation, as shown:



Then you will see the following interface, which is an installation package for 2005 environment. If your PC already has this installed, click "No" to exit, otherwise, click "Yes" to install it.



2、SOFTWARE START



Double click the short cut on the desktop, then click Device, select the right model number, see below:

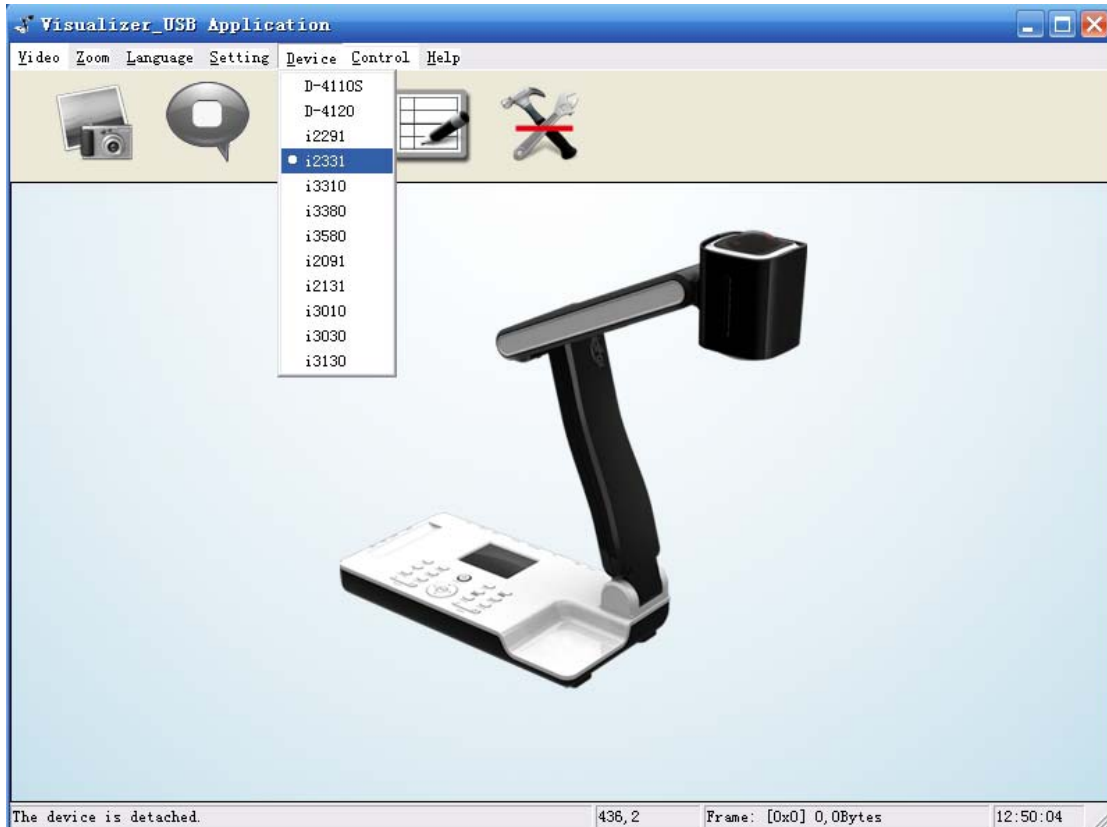
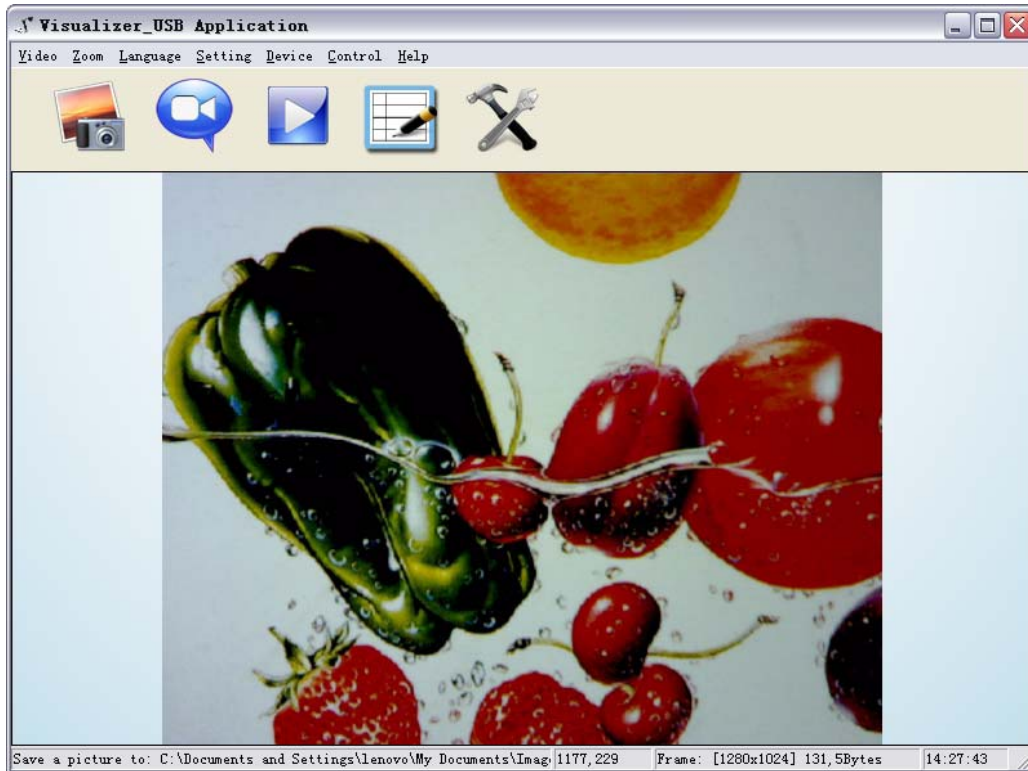




IMAGE CAPTURE AND VIDEO RECORDING:



Left click to capture images. The captured images will be automatically saved into the default destination folder. The path and file name are displayed in software status bar on the bottom of the window. Shown below:




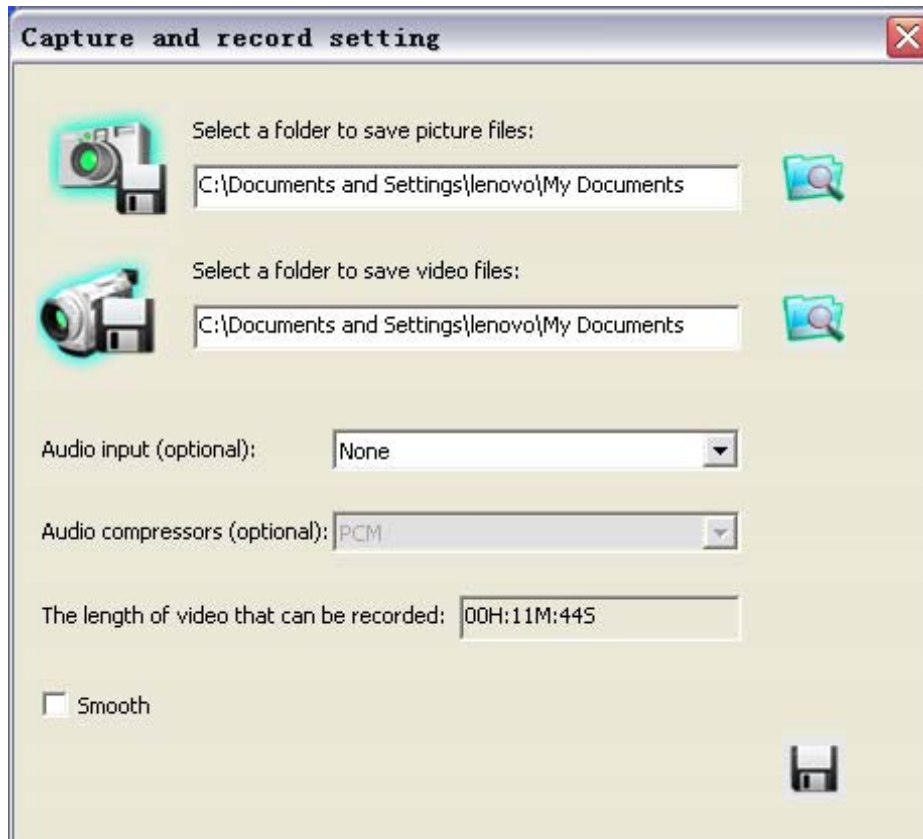
Left click  to start recording. The setting button will changes to  and does not work. The detailed information is displayed on the software status bar in the bottom of the window. The video is automatically saved in the default folder or pre-set folder.

SETTING:

The captured images and recorded videos will be saved into the folders of Images and Videos respectively, which are created by the system automatically. To set a different path to which the



image/video is be to saved, click  on the left side of the window, a pop up dialog box appears below.

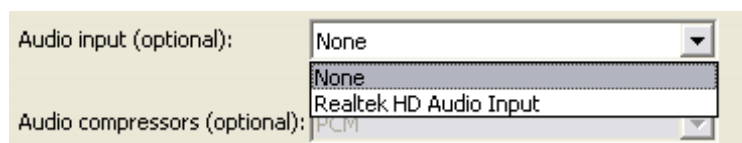


Save the captured images into a different folder

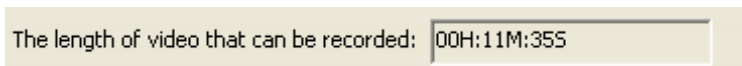
Click the button next to the "select a folder to save picture files" text box to set the path for captured images.

Save the recorded video into a different folder and set up parameters for videos

Click the button next to the "Select a folder to save video files:"text box to set the path for videos. You can also change the video settings. The Audio input (optional) drop down box offers the options of recording video with or without sound. Shown below:




The length of video that can be recorded box displays the longest recording time for videos to be saved in the preset path. Shown below:

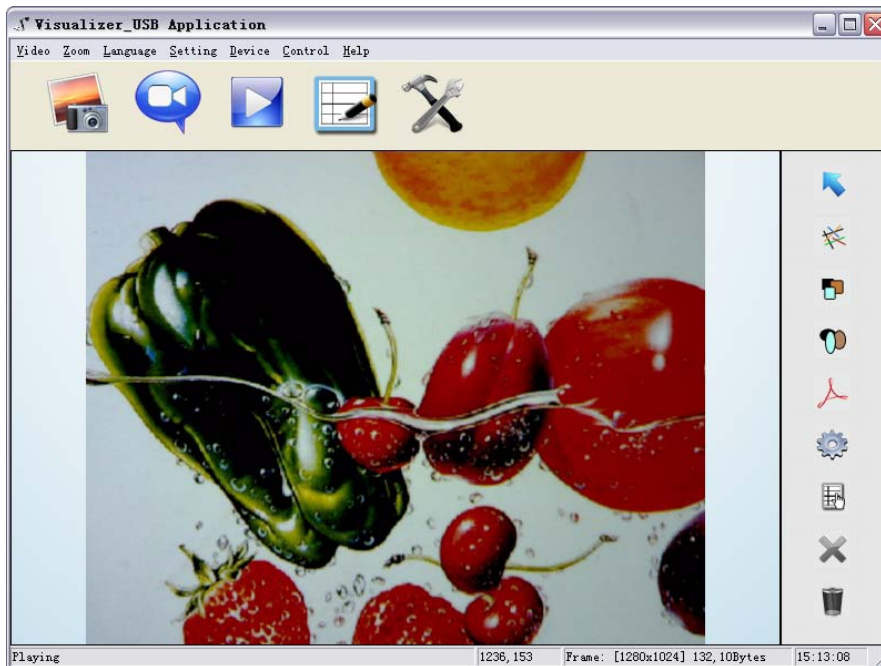


Click save to complete setting.

IMAGE MODIFY:




Click  , you will see the interface:



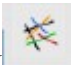
Graphic selection and move

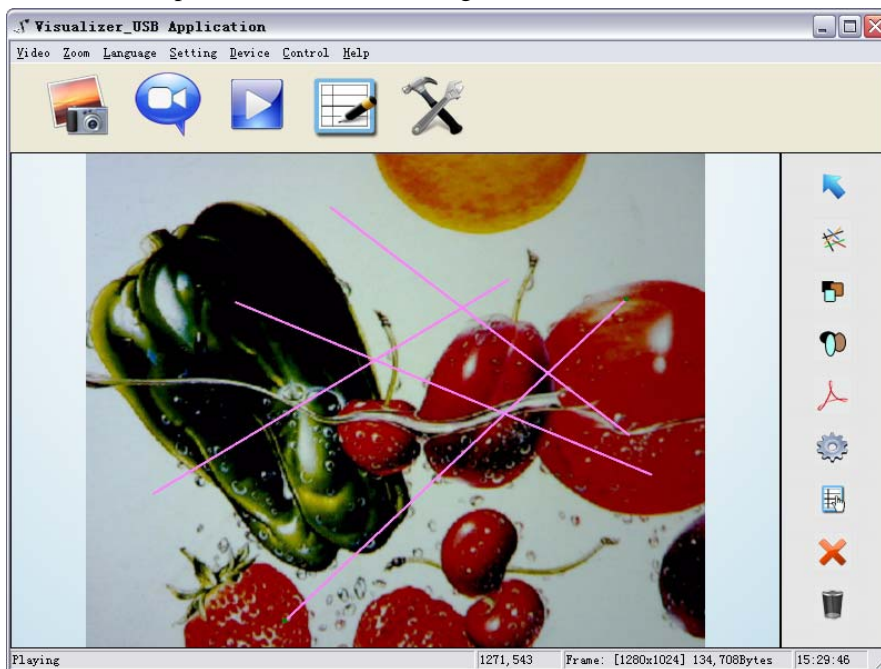


Click  to choose a line, circle, rectangle or curve that placed in the image, then move to another place.

Line

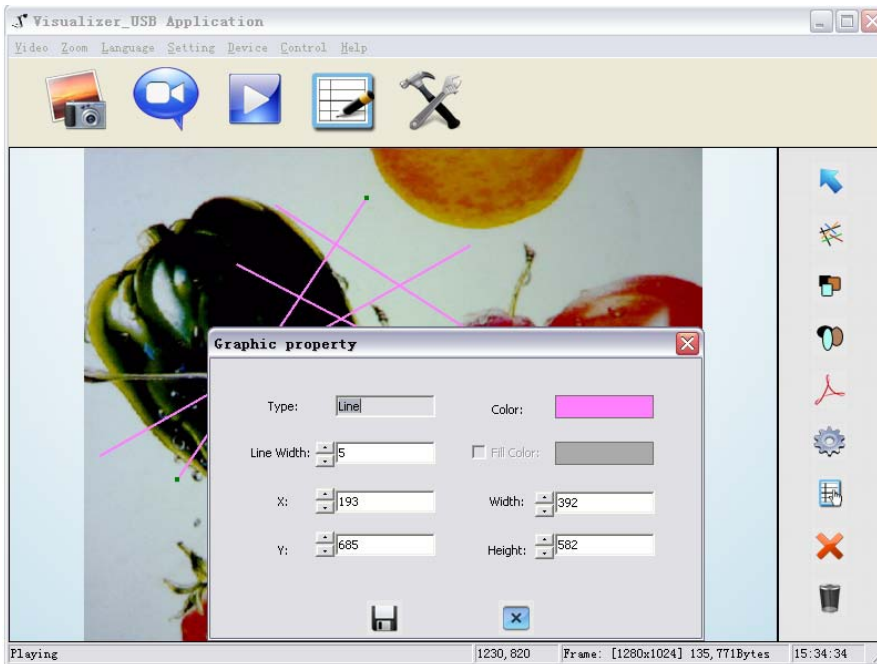


Click  to place a beeline in the image, shown as below:





Click to change the setting of the chosen line:



Line width: change the width of the line.

X, Y: change the position of the line.

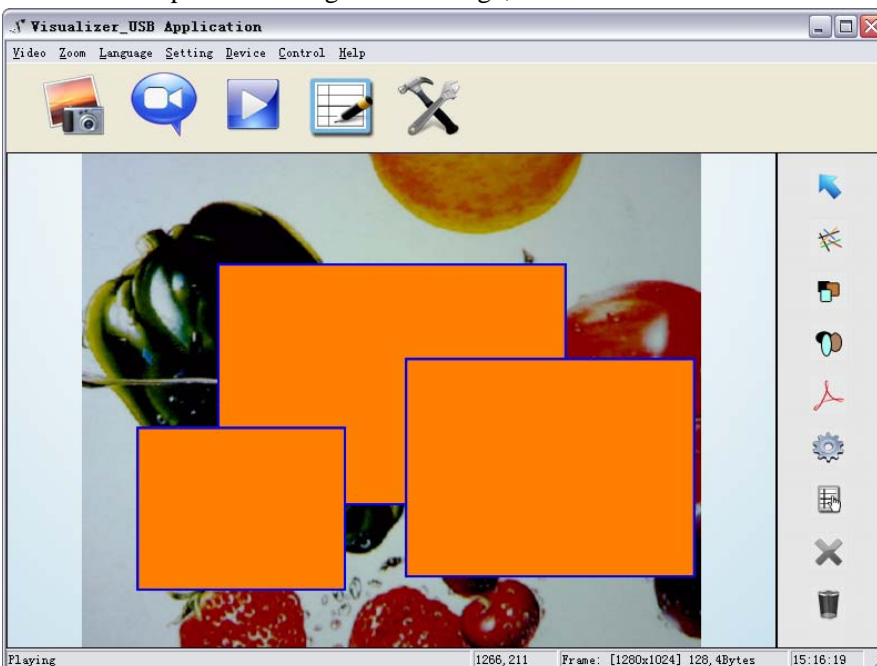
Color: change the color of the line.

Width, Height: Change the angle of the line.

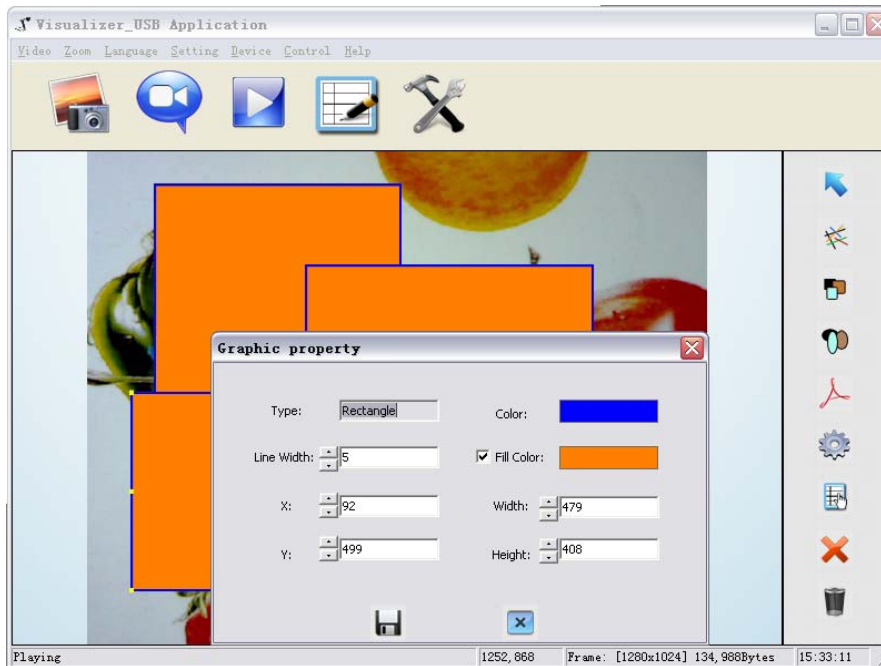
Rectangle



Click to place a rectangle in the image, shown as below:



Click to change the setting of the chosen rectangle:



Line width: change the line width of the rectangle.

X, Y: change the position of the rectangle.

Color: change the line color of the rectangle.

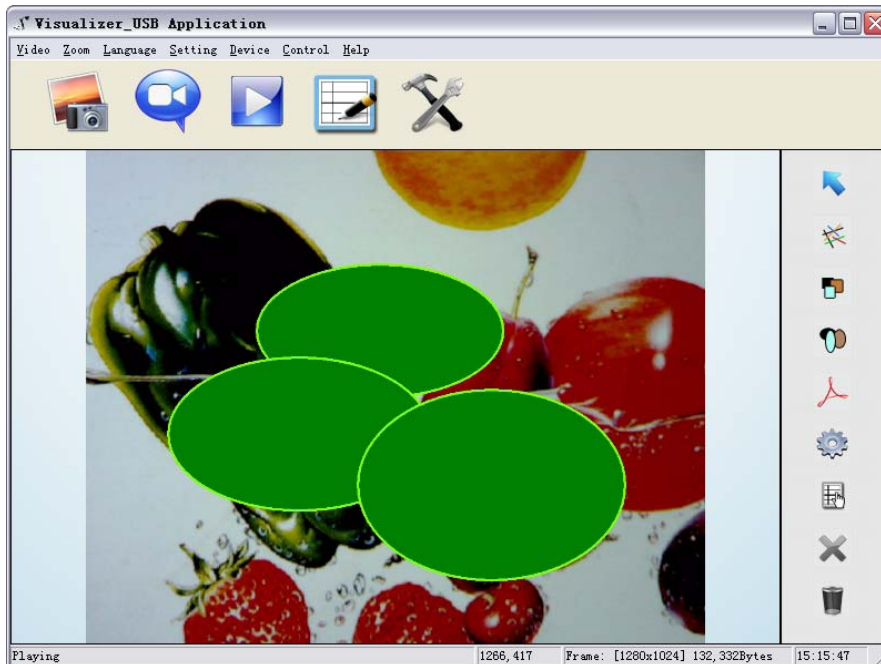
Fill Color: Tick it to fill color in the rectangle.


Width, Height: Change the shape of the rectangle by changing the angle of two adjacent lines of the rectangle.

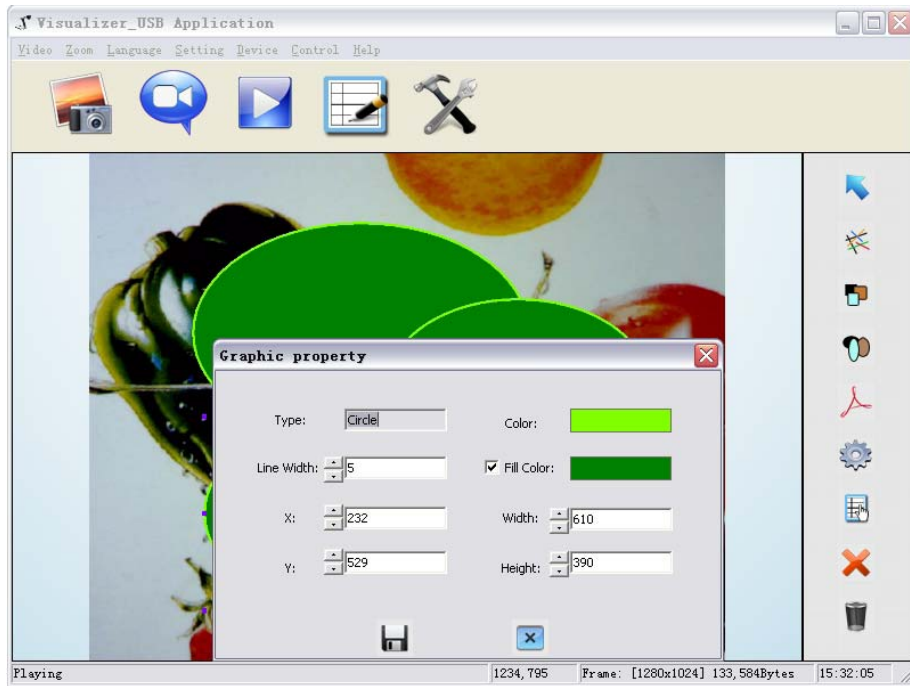
Circle



Click to place a circle in the image, shown as below:



Click  to change the setting of the chosen circle:



Line width: change the line width of the circle.

X, Y: change the position of the circle.


Color: change the line color of the circle.

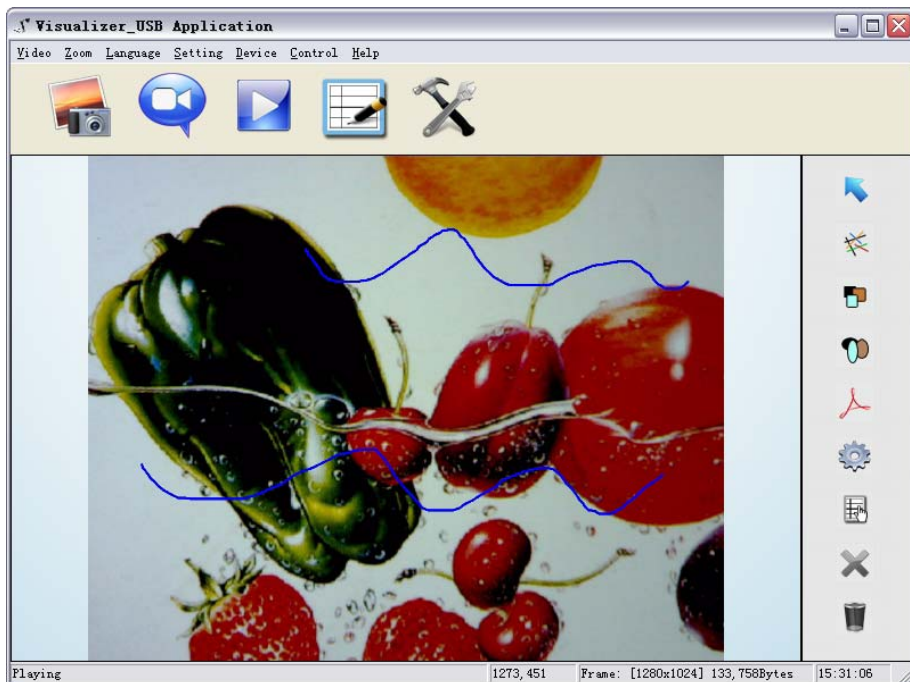
Fill Color: Tick it to fill color in the circle.


Width, Height: change the size of the circle.

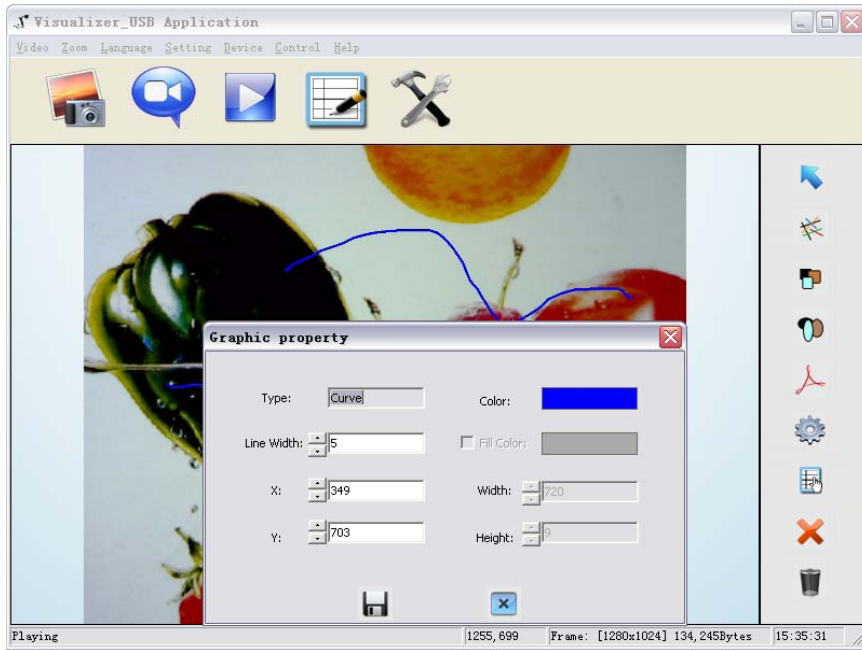
Curve



Click  to place a curve in the image, shown as below:



Click  to change the setting of the chosen curve:




Line width: change the line width of the curve.

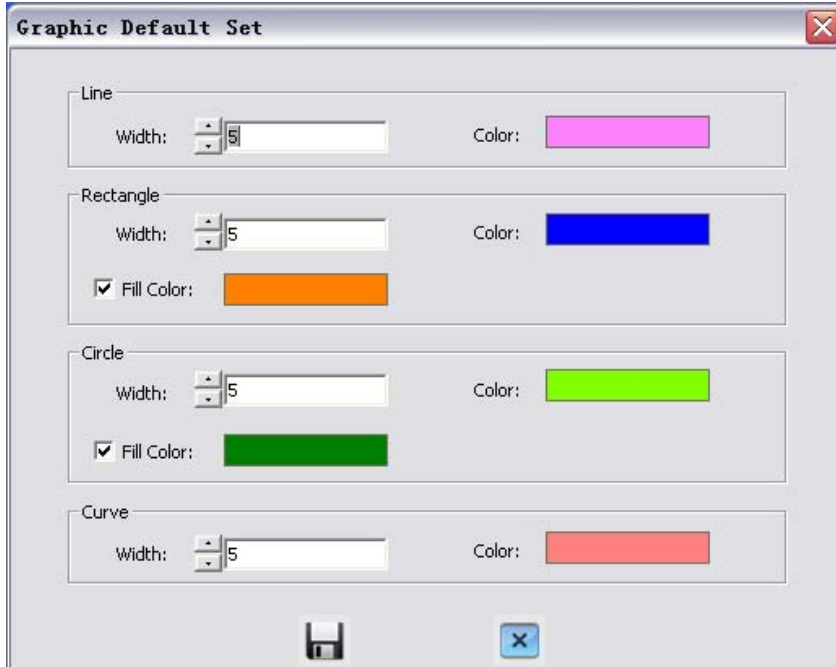
X, Y: change the position of the curve.

Color: change the line color of the curve.

Graphic default setting




Click  to change the setting of the graphic:



Graphic delete



Click  to delete the chosen graphic.

Delete all the graphic



Click  to delete all graphic that placed in the image.

7. FEATURES

LIGHT

The i-5330 is the environmentally friendly product, it is RoHS compliant, which means it meets the rigorous European Union's requirements for restriction of the use of certain hazardous substances in electrical and electronic equipment. The lighting box of i-5330 adopts eco-friendly, low power consumption and long lasting LED lamps, which is cool to the touch and mercury content free.

ZOOM IN AND ZOOM OUT

9x optical zoom combined with 12x seamless digital zoom, the i-5330 enables you to view the finest details of any objects that are impossible to see with your naked eyes. The i-5330's advanced optical system features high speed auto focus capability that ensures instant auto focus when you quickly zoom in and out of any object. You can also manually adjust focus to satisfy any special viewing needs by pressing "ZOOM+" or "ZOOM-".

FOCUS ADJUSTMENT

When the Visualizer is turned on the focus automatically adjusts to the stage, it is not necessary to readjust the focus if you are only working with flat materials (text, photos, etc.). Only 3D objects require a focus adjustment. Press the "AUTO" button to auto focus. Press the "FOCUS+", or "FOCUS-" button once to focus manually.

BRIGHTNESS ADJUSTMENT

If the image effect is not satisfactory, you can adjust the brightness to get a better image effect. Use the "BRIGHT +" or "BRIGHT -" button to adjust the brightness. To increase the brightness, press the "BRIGHT +" button. To decrease it, press the "BRIGHT -" button.

WHITE BALANCE ADJUSTMENT

Each time the lighting condition changes, the user should adjust the white balance of the CMOS.

Press the “AUTO” button to adjust the white balance automatically.

TEXT/PICTURE MODE

The Text enhancement feature provides the option to improve the readability of the text by improve the contrast of the text image via pressing the “T/P” button.

IMAGE FREEZE

The freeze function allows you to discretely prepare the next image without interrupting current presentation. Use "FREEZE" to freeze and unfreeze the image.

IMAGE MIRROR

The mirror function gives you a different perspective of an object.

SPLIT SCREEN

The split screen offers the capability of comparing two images or comparing two different views of one object side by side.

IMAGE SAVE

The i-5330 offers the opportunity of storing 12 images on board. You can recall them by just pressing one of the numerical buttons on the front panel or remote control.

IMAGE RECALL

By pressing the “Recall” button, all saved images is displayed in the thumbnail index mode for easy selection.

USB 2.0 PORT

The USB port can be used to store still images from the visualizer in a computer. No additional computer hardware is required. In this way, the visualizer can be used as a 3-D scanner for your computer. Connect the Visualizer to your computer with the supplied USB cable. The Visualizer

Software is available on the supplied CD-ROM.

USB IMAGE CAPTURE AND VIDEO RECORDING

The i-5330 is the document camera equipped with a USB 2.0 image capture and video recording system. Simply connect the i-5330 to a computer, with the software and driver we provided, you can easily preview, capture and save any images on your PC and Mac.

8. SPECIFICATION

Model	i-5330
Sensor	1/3" CMOS
Pixels	2 Megapixel
Zoom	9x optical, 12x digital
Frame rate	12
Shooting area	Max:16.5"x11.7", Min: 0.1"x0.1"
Focus	Auto/manual
Output resolution	XGA, SXGA
Resolution(Horizontal)	≥750 TV lines
White balance	Auto/manual
Color adjustment	Yes
Brightness adjustment	Yes
Image capture	Yes,12images
Video recording	Yes(via USB)
Image mirror	Yes
Image split	Yes
Image freeze	Yes
Text mode	Yes
OSD	Yes
USB2.0	Slave×1(USB camera)
Remote control	Yes(360°controllable)
Light source	LED light box
Kensington lock	Yes
Operating temperature	32°F ~113°F
Dimensions	Setup:17.7"×8.3"×19.7", Folded: 6.7"×8.3"×15.7"
Power supply	12V DC power adapter
Weight(net)	3.97lbs/1.8kg

9. TROUBLE-SHOOTING:

Symptoms	Possible causes/counter-measures
No image	<ol style="list-style-type: none">1. Power cord is not properly connected.2. Cables are not properly connected.3. Power switch is not turned on.4. The built-in fuse is broken: Change fuse.5. Change the output resolution.
Image bending	<ol style="list-style-type: none">1. Camera not in right position, adjust the camera.2. Press the AUTO
Out of focus or blurring image	<ol style="list-style-type: none">1. The object is too close to the lens.2. Focus is on the top point of zoom, press ZOOM-.3. Auto-focus is not on: press AUTO again.4. Fog on the lens in damp climate. It will disappear gradually when the equipment warms up.

If the problem still remains after checking the above, consult your dealer or authorized service personally.

10. PACKING LIST

Item	Quantity
Power cord	1
Power adaptor(12V/2A)	1
VGA cable	1
USB cable(2.0)	1
Remote control	1
User manual(CD)	1