

THETFORD

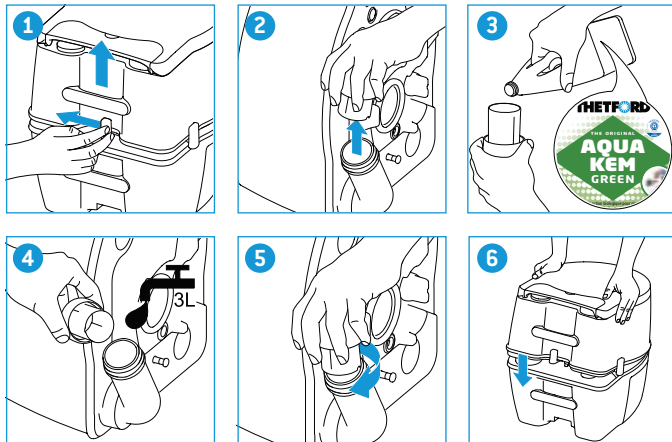
Porta Potti Excellence User Manual



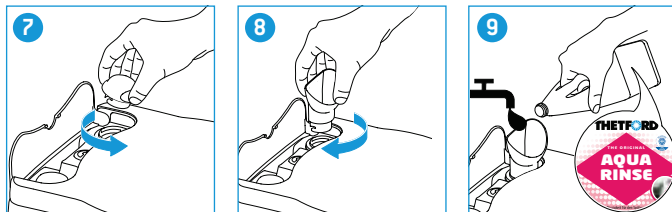
THETFORD

QUICK GUIDE

Preparing waste-holding tank

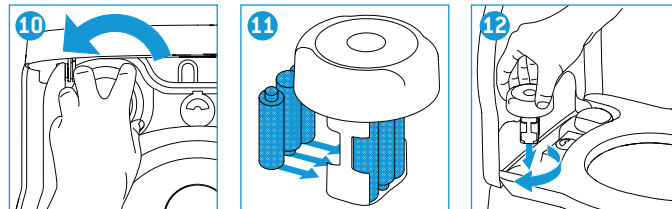


Preparing flush-water tank

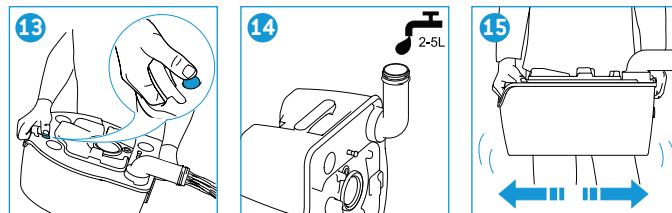


QUICK GUIDE

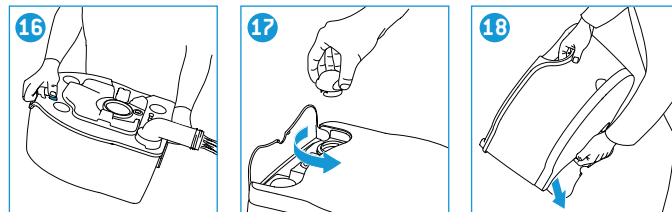
Preparing electric pump



Emptying waste-holding tank



Emptying flush-water tank



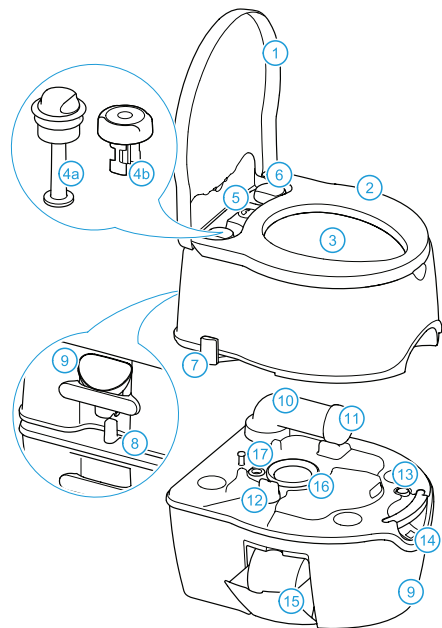


INDEX

GB	6
FR	11
SE	16
ES	21
DK	26
DE	31
NL	36
IT	41
PT	46
NO	51
FI	56
SI	61
SK	66
BG	71
CZ	76
GR	81
HU	86
PL	91
RU	96
UA	101
LV	106
LT	111
CN	116
EE	121
For guarantee/service	126

GB • INSTRUCTIONS FOR USE

Main parts



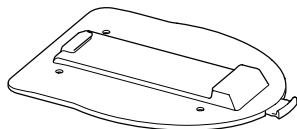
Flush-water tank

- 1 Cover
- 2 Seat
- 3 Toilet bowl
- 4a Piston pump
- 4b Electric pump
- 5 Level indicator flush-water tank
- 6 Water filler cap
- 7 Blade handle
- 8 Clasp
- 9 Water filler adaptor

Waste-holding tank

- 10 Pour out spout
- 11 Cap+measuring cup
- 12 Blade opener
- 13 Vent button
- 14 Level indicator waste-holding tank
- 15 Toilet roll holder
- 16 Lip seal
- 17 Vent seal

Optional extra for your toilet



Floor plate

This allows you to attach the toilet to the floor, wherever you like. One simple action releases the toilet.

1 Introduction

Congratulations on selecting this Thetford portable toilet! You have made an excellent choice. This portable toilet is user-friendly, meets high quality standards and gives you all the convenience of home.

Before operating and using this toilet we advise you to read the manual completely. Keep this manual in a safe place for future reference.

For the latest version of the manual please visit www.thetford.eu

Symbols used

- OK
- Tip
- Special attention required
- Caution (possible risk of injury or product damage)

2 Preparing for use

Your portable toilet is made up of two detachable sections: the waste-holding tank of 21L and the flush-water tank of 15L. Before using the toilet, it is vital that you add toilet additives to both tanks. Check the correct dosage on the additive package. Then add 3L of water to the waste-holding tank and fill the flush-water tank to the top.

If you have a toilet with an electric pump, insert six batteries before use.

Never add toilet additives directly via the blade as this could damage the lip seal of the waste-holding tank. Only fill the waste-holding tank via the pour out spout.

See 'Quick Guide' pictures 1-12 for visual reference.

Thetford offers a pleasantly-scented toilet fluid for the flush-water tank (Aqua Rinse) and a variety of waste-holding tank products (Aqua Kem Blue, Aqua Kem Green, Aqua Kem Natural, Aqua Kem Sachets).



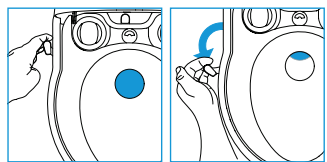
Aqua Rinse keeps the flush water fresh, ensures a smooth flush and leaves a protective layer. All products for the waste-holding tank suppress unpleasant smells, stimulate the breakdown of waste, reduce the formation of gas, protect moving parts and help to keep your waste-holding tank fresh and clean. For the differences between the distinguishing qualities of each waste-holding tank product please visit www.thetford.eu.

The range of available Toilet Care products may vary for each country.

3 Use of your toilet

Opening the blade

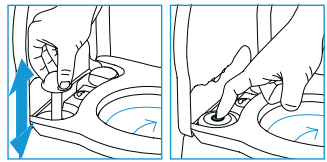
The toilet can be used with the blade open or closed. To open the blade, pull the blade handle as described below.



Make sure you always close the blade completely after use.

Flushing the toilet

You can achieve the most effective flush by operating the manual pump with three or four short flushes. A toilet with an electric pump will automatically flush with short interruptions.



Ordinary toilet paper can cause clogging. Use Aqua Soft toilet paper instead. This toilet paper is supersoft, dissolves quickly, prevents clogging and makes it easier to empty the waste-holding tank. To ensure toilet paper is always on hand, your toilet includes space for one toilet roll.



4 Emptying the tank

Waste-holding tank

You need to empty the waste-holding tank when the level indicator turns red. Disconnect the flush-water tank from the waste-holding tank. Take your waste-holding tank to an authorised waste disposal point and empty it via the pour out spout.

To empty the tank without splashing, press and hold the vent button with your thumb while the pour out spout is pointing downwards.

See 'Quick Guide' pictures 13-16 for visual reference.

If you want to continue using your toilet after emptying, prepare the waste-holding tank again.

Our green products Aqua Kem Green, Aqua Kem Natural and Aqua Rinse (test ISO 11734) are absolutely safe to empty into a septic tank or small biological systems on camp sites.

Flush-water tank

Only empty the flush-water tank if you don't expect to use your toilet for a long (winter) period. First empty the tank through the water fill opening, then, to empty the tank completely, pump the last drops of water out of the pump. Emptying is only allowed at an authorised waste dump.

See 'Quick Guide' pictures 17-18 for visual reference.

5 Cleaning

Just like your toilet at home it is also important to clean the portable toilet regularly. You will prevent calcium deposits and ensure optimal hygiene. Clean the inside of the bowl with Toilet Bowl Cleaner and a soft brush and use Bathroom Cleaner for the outside of the toilet.



Never use household cleaners to clean your portable toilet. These may cause permanent damage to the seals and other toilet components.

6 Winter use

You can use your toilet as normal in cold weather as long as the toilet is situated in a heated location. If not, and there may be a risk of frost, we advise you to completely empty the waste-holding tank as well as the flush-water tank.

Aqua Kem Sachets are particularly suitable for winter camping as the sachets are filled with powder. They completely dissolve in water, are easy to dose and economical to use.



7 Maintenance

To prolong the life span of your toilet, we advise you to maintain your toilet regularly. Use Cassette Tank Cleaner for the waste-holding tank 2 to 3 times a year and treat the seals with Seal Lubricant when they become dry. Cassette Tank Cleaner safely removes stubborn calcium deposits on the inside of your waste-holding tank and Seal Lubricant keeps the seals soft and pliable.



Never use Vaseline or vegetable oil to lubricate the seals as these may cause leakage to your waste-holding tank.

8 Storage

If you don't expect to use your toilet for a long period, you have to thoroughly empty, clean and dry the whole toilet. This is also a good time to maintain your toilet.

During storage we advise leaving the blade open to prevent damage to the blade and to loosen the water filler cap to ventilate the flush-water tank. If you have an electric pump, also take the batteries out.

9 Disposal

Your product has been designed and manufactured with high quality materials and components, which can be recycled and reused. When your toilet has reached its end of life, dispose the product according to the local rules. Do not dispose the toilet with the normal household waste. The correct disposal of your old product will help prevent potential negative consequences for the environment and human health.

10 Questions?

If you require further information about your toilet, please visit our website: www.thetford.eu. If you still have questions, please contact the Customer Service Department either in your country or your holiday location (see the addresses on the back).

For correct and efficient support, please ensure all relevant product type information is available (see last page).

Spare parts

Original Thetford spare parts are available through your own dealer or authorised Thetford Service Centre.

FAQ

What do I need to do when the level indicator of the waste-holding tank doesn't work? Check whether the float in the waste-holding tank is still in place or whether dirt is obstructing its function.

What do I need to do if the blade doesn't open? Travelling may cause over-pressure in the tank. Unscrew the cap of the pour out spout and slowly pull the blade handle sideways.

11 Warranty

Thetford BV offers end users of its portable toilets a three-year guarantee. In the case of malfunction within the warranty period, Thetford will offer a replacement or repair the product at its discretion.

1. To make a claim under this guarantee, the user must take the product to the point of sale or an authorised Thetford Service Centre (www.thetford.eu). The claim will be assessed there.

2. Components replaced during repair under guarantee become the property of Thetford.

3. This warranty does not prejudice current consumer protection laws.

4. Guarantee claims falling into one of the following categories will not be accepted:

- the product has been improperly used, or the instructions in the manual have not been followed (for example incorrect use of additives);
- alterations have been made to the product;
- the product code or serial ID has been changed;
- the product has been damaged by circumstances outside the normal use of the product.

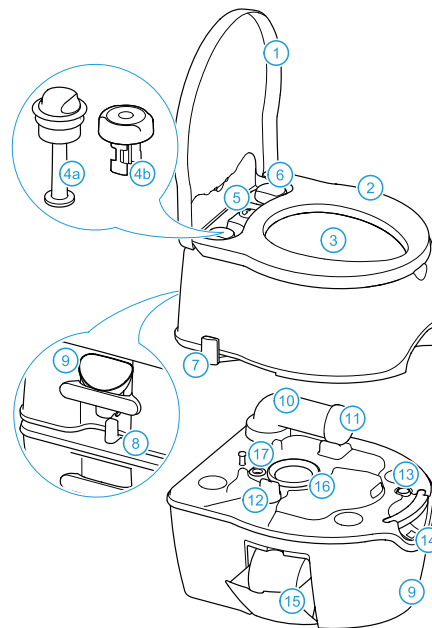
5. Not using Thetford products to care for your Thetford toilet could create some damage, which would not be covered by this warranty.

Thetford is not liable for any loss and/or damage, caused directly or indirectly by use of the toilet.

Thetford is not responsible for printing errors and reserves the right to make changes to product specifications without notice.

FR • MODE D'EMPLOI

Principaux composants



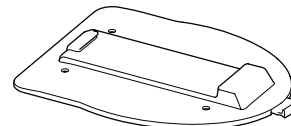
Réservoir d'eau propre

- 1 Couvercle
- 2 Lunette
- 3 Cuvette des toilettes
- 4a Pompe à piston
- 4b Pompe électrique
- 5 Indicateur de niveau du réservoir d'eau propre
- 6 Bouchon de remplissage d'eau
- 7 Poignée d'ouverture du clapet
- 8 Fermeoir
- 9 Adaptateur de remplissage d'eau

Réservoir à matières

- 10 Bras de vidange
- 11 Bouchon doseur
- 12 Poignée d'ouverture
- 13 Bouton de mise à l'air libre
- 14 Indicateur de niveau de réservoir à matières
- 15 Porte-rouleau de papier toilette
- 16 Joint de clapet
- 17 Joint de mise à l'air libre

Option pour vos toilettes



Embase de fixation au sol

Elle vous permet de fixer vos toilettes au plancher, à l'emplacement de votre choix. Une simple action permet de libérer ces toilettes.