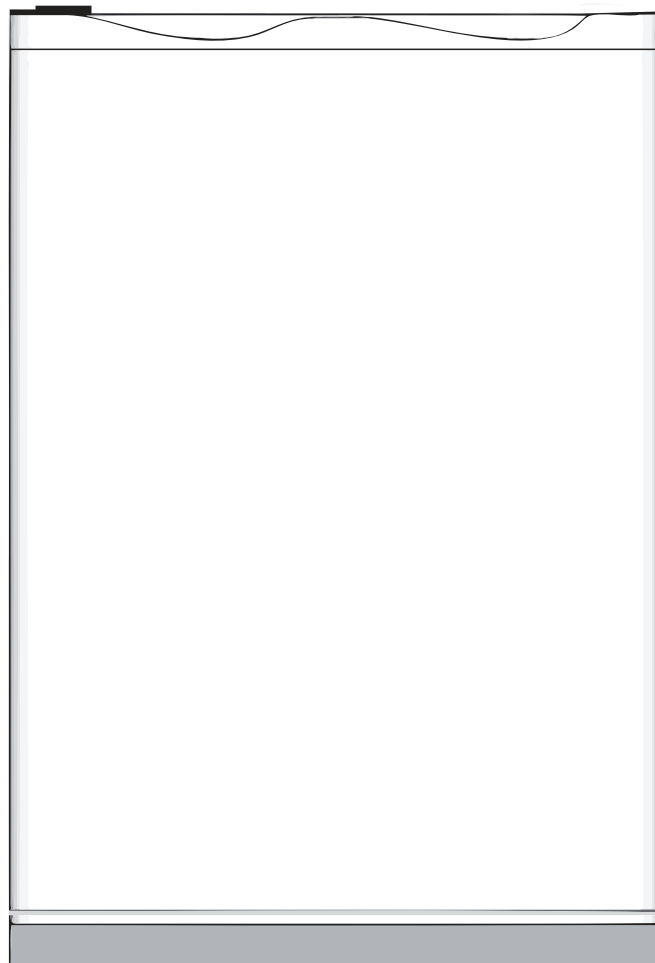


próssimo

**FREEZER
USER'S MANUAL**

Model : PUF80WH



To ensure proper use of the appliance and your safety, please read the following user manual completely before operating this appliance.

Dear Customer,

Congratulations on purchasing your new product from Think Appliances.

To register your parts and labour warranty (some conditions apply please refer to your warranty card for more details) please contact our Customer Care team on:

1800 444 357

Our Customer Care centre is there to ensure you get the most out of your appliance. For example, should you want to learn more about recommended cooking temperatures, the various cooking functions available, how to set and program your LED clock, and importantly taking care of your appliance when cleaning, please call us because we are here to help you.

It is important that you read through the following use and care manual thoroughly to familiarize yourself with the installation and operation requirements of your appliance to ensure optimum performance.

We also carry a complete range of spare parts for all Think products. For all your spare parts enquiries please contact our team at Pronto Parts on:

1300 306 973

Again, thank you for choosing an appliance brought to you by Think Appliances and we look forward to being of service to you.

Kind regards

Management

Think Appliances

- Thank you for purchasing our product and thank you for placing your confidence in us.
- Read this manual carefully before using. Follow instructions and keep it for future reference.
- Follow the operating instructions and safety notices in this manual.
- If any trouble arise, do not fix it yourself or hand it to the after sales service centre which have not been authorised. Please contact the local authorised service centre.
- This freezer is designed and approved for use with flammable R600a hydrocarbon refrigerant.
- R600a refrigerant is better for the environment.
- R600a is an eco-friendly hydrocarbon refrigerant.
- The appliance is specifically constructed for domestic use and is therefore suitable for the refrigeration and storage of frozen foods and the production of ice-cubes.

The appliance has not been designed or manufactured for professional use. Teco declines all responsibility for damage deriving from improper use of the appliance. The freezer has undergone the necessary tests on the tightness of the refrigeration circuit and complies with the safety regulations for electrical appliances.



WARNING

WARNING ICON

This symbol indicates information concerning your personal safety



CAUTION

CAUTION ICON

This symbol indicates information on how to avoid damaging the appliance



FLAMMABLE ICON



R600a WARNING LABEL

R600a

TABLE OF CONTENTS

Safety precautions.....	1 - 2
Name of parts and usage.....	3
Installation instructions.....	4
Transporting the appliance	5
Operating instructions	6
Defrosting	7
Maintenance	8
Disconnection of the appliance	9
Reversing the door	10 - 11
Troubleshooting	12 - 13
Repairs, service & warranty	13
Specifications	14



R600a Iso-butane Refrigerant

- Hydrocarbon refrigerants have excellent refrigerant properties and minimal low global warming potential and no ozone depletion potential.
- This appliance contains a small quantity of flammable, non-synthetic R600a refrigerant:
- Hydrocarbon refrigerants cannot be 'retrofitted' to the appliance that has not been designed and approved to use that type of refrigerant.
- Ensure that the tubing of the refrigerant circuit is not damaged during transportation and installation.
- Leaking refrigerant may cause eye injuries or could ignite.
- The room for installing the appliance must be at least 1m³ per 8g of refrigerant. The amount of refrigerant in the appliance can be found on the rating plate attached to the appliance.



Risk of fire

- If the refrigerant circuit should become damaged. Avoid open flames and sources of ignition. Disconnect the appliance from the mains power. Thoroughly ventilate the room in which the appliance is situated for several minutes.

SAFETY PRECAUTIONS



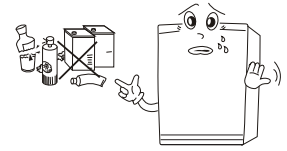
Instructions

- The refrigeration system behind and inside the freezer contains refrigerant. Do not allow any sharp objects to come in contact with the refrigerant system.
- Keep ventilation openings, in the appliance enclosure or in the built in structure, clear of obstruction.
- Do not use mechanical devices or other means to accelerate the defrosting process, other than those recommended by the manufacturer.
- Do not damage the refrigerant circuit, do not use electrical items or fire equipment nearby, and open all windows to provide good ventilation.
- Do not use electrical appliances inside the food storage compartments of the appliance unless they are the type recommended by the manufacturer.
- This appliance is not intended for use by persons (including children) with reduced physical, sensory or mental capabilities, or lack of experience and knowledge, unless they have been given supervision or instruction concerning use of the appliance

by a person responsible for their safety.

- Young children should be supervised to ensure that they do not play with the appliance.

- If the supply cord is damaged, it must be replaced by the manufacturer, its service agent or similarly qualified persons in order to avoid a hazard.



- When disposing of the appliance, do so only at an authorised waste disposal centre.
- Don't store inflammable materials such as ether, benzene, LP gas and glue etc in the freezer.
- Please remove all the doors before you dispose your freezer and leave the shelves in place to prevent access by children.
- Do not expose to flame.
- Please keep the appliance away from substances which could cause ignition.
- Before obtaining access to electrical terminals, all electrical supply circuits must be disconnected.

- The freezer is designed to operate on a single phase power supply within a voltage range of 220~240V/50Hz.

- Don't splash water on the rear of the appliance, for it may cause malfunction or electric shock.

- Containers with flammable gases or liquids can leak at low temperature. There is a risk of explosion.

- Do not store any container with flammable materials such as spray cans in the freezer.



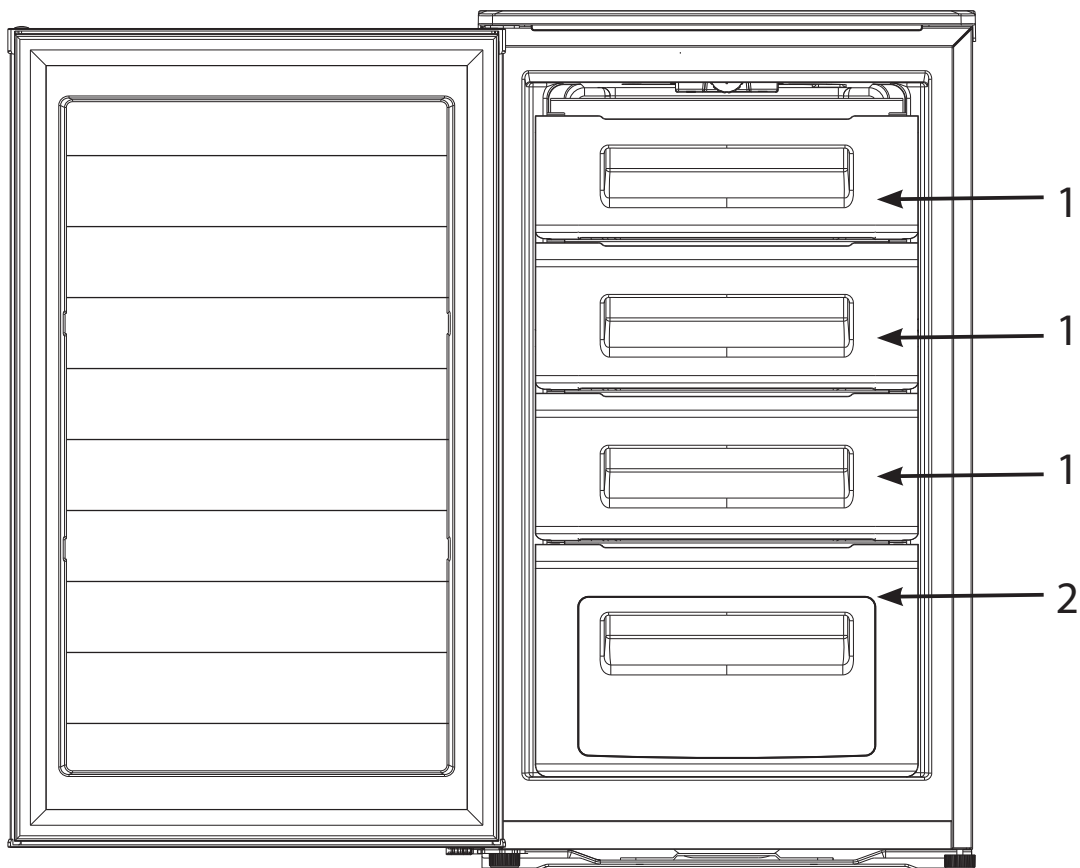
- Do not operate any electrical appliance in the freezer (e.g. electric ice cream makers, mixers etc.).
- Before cleaning the appliance, always switch off the appliance and unplug it, or pull the house fuse or switch off the circuit breaker.



Safety of children

Packaging (e.g. wraps, polystyrene) can be dangerous for children. There is a risk of suffocation. Keep packaging materials away from children. Remember to dispose of old appliances in accordance with local laws. Pull out the mains plug, cut off the mains cable, break or remove spring or bolt catches if fixed and ensure that children cannot lock themselves in the appliance when playing (there is risk of suffocation) or involve themselves in other dangers, for children cannot recognize the hazard present in household appliances themselves. Therefore, it is very important for parents to make adequate supervision and never let children play with the appliance.

NAME OF PARTS AND USAGE



- 1. Small Food Compartment Drawer**
- 2. Large Food Compartment Drawer**

- The freezer you purchased is subject to continuous improvement, which may not be completely consistent with the manual, however the functions and operating methods will not change.
- If you use the freezer for the first time, remove any adhesive tapes.
- Do not pull or push the drawers forcefully during use in case of damage.

PACKING LIST

Check the packing list that all items have been included.

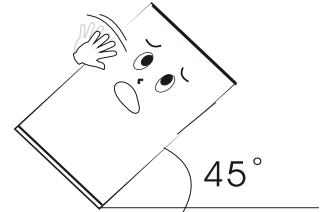
Part No. (see pg.3)	Model	TVF81WMCCBC
1	Small Food Compartment Drawer	3 pieces
2	Large Food Compartment Drawer	1 piece
	User manual	1 copy
	Warranty Information	1 copy

Note: Product specifications are subject to change without prior notice.

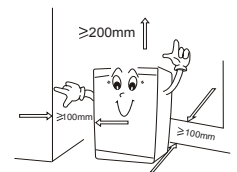
TRANSPORTING THE APPLIANCE

1. The appliance must be transported only in a vertical position. The packing must be intact during the transportation.
2. When unpacking and re-packing the appliance, please memorise the position of each accessory of the appliance when unpacking it. When re-packing the appliance for transportation, ensure all accessories are secured before transportation.
3. Do not lift or pull the door during transportation

INSTALLATION INSTRUCTIONS

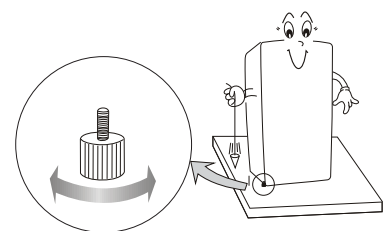


1. When moving the appliance, do not tilt >45 degrees (the angle of the vertical direction). Please avoid strong vibration and impacts that could cause damage to the appliance.
2. The freezer should be located on a firm and flat surface. An uneven surface may cause excess operating noise or vibration.
 - (a) The noise may be increased if the floor is not firm.
 - (b) If the appliance is to be positioned on carpet flooring and heat emitted from the appliance is a concern, place a solid sheet under the appliance.
3. Choose a location which is not exposed to sunlight, high temperature or humid, as humidity may cause staining.



4. It is recommended a clearance of at least 100mm away from objects and walls on both sides and back. Ensure the clearance above the appliance is not less than 200mm and 160° clear for the door to swing open.

5. If the appliance is unstable, rotating either of the front two legs in a clockwise direction will raise the appliance.



6. When adjusting the front legs, ensure the appliance slopes backwards slightly for keeping the door closed.

- 5 7. Remove all internal packaging before operating.

OPERATING INSTRUCTIONS

PLACEMENT OF FOOD

1. There should always be some space between items inside for air circulation.

2. Food should be kept in sealed packaging to avoid becoming dry or spoilt.



3. Hot food should be cooled down before placing into the appliance. Otherwise, the interior temperature and power consumption will increase.

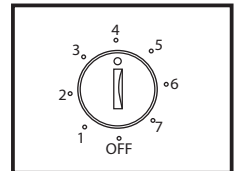
4. Reduce opening the door frequently. This will increase the appliance efficiency and reduce power consumption.



WARNING

Do not use any electronic equipment inside the appliance.

The temperature of freezer can be controlled manually by adjusting the thermostat dial located at rear. However, the number shown on the dial does not directly represent the temperature. Instead, the larger the number is, the lower the interior temperature will be. 0 stands for off (refrigeration system only). Turn the dial to position 4 for normal use, turn it to position 4-7 if a lower interior temperature is required; alternatively, to increase the interior temperature select position 4-1. The first time you turn the unit on set the temperature control to the maximum position, using a coin or flathead screwdriver. After 24 to 48 hours, adjust the temperature control to the setting that best suits your needs.

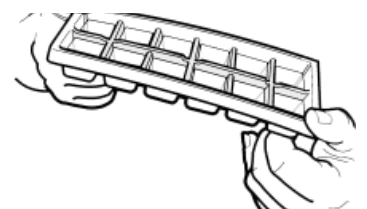


WARNING

Do not store objects which are costly or subject to temperature variations. e.g. medication or chemicals.

ICE MAKING

To make ice cubes, fill the ice tray with potable water and place it in the freezer. To remove ice cubes easily, run water on the tray before gently twisting and inverting the tray.



DEFROSTING

Heavy frost will effect the refrigerating process or internal temperature of the appliance and increase the power consumption. Thus, defrosting is required if the frost is >5mm thick. Defrosting is a manual process. Please follow these steps:

1. Switch off and disconnect the appliance.
2. Remove all food from the ice box and freezer compartments.
3. Remove the freezer drawer.
4. Open the door and wait for the ice to defrost.
5. When de-icing, a scraper or plastic utensil may be used. Never use metal instruments or electrical appliances to de-ice the ice box.
6. To speed up the defrosting process, you can place a bowl of hot water in the compartment and close the door.
7. When defrosting is complete, clean the appliance.
8. Replace the shelf and food before restoring power.



CAUTION

Do not use an electric heater or hair dryer to increase the defrost process. It may destroy the cooling system.

ENERGY SAVING TIPS

1. Adjust the temperature control to a setting that is acceptable for the storage of the food. This will reduce the power consumption.
2. Only open the door when required. Frequently opening the door will increase power consumption.
3. Maintain good air circulation within the freezer.

MAINTENANCE

The appliance should be maintained and cleaned frequently. For your safety, pull the plug out of the socket before cleaning.

1. Interior and exterior maintenance

- Clean the interior of the appliance with clean water and wipe it dry with a piece of dry cloth.
- Cleansers such as soap powder, abrasive cleaning powder, alkali cleansers, chemical cloth, thinners, alcohol, acid petroleum products and hot water should not be used to clean the freezer as they may damage the painted cover and plastics.

2. Smearing can age the interior plastic components, so remove it as soon as possible.

3. Wipe the door gasket clean, it is easy to damage the door gaskets if polluted by stains, e.g. oil, sauce, etc.

4. Please check the points below after maintenance:

- (1) Is there any damage or loss of the power lead?
- (2) Can the power plug be inserted into the power socket correctly?
- (3) Is the power plug and/or lead heating up?



Please remove the gasket from the door before disposing. The disposed apparatus should be handled by professionals, as it may be harmful to the environment. If disposal is necessary, please contact your local authorities for correct method of disposal. Dispose of all packaging in a responsible manner in accordance with local council regulations.

DISCONNECTION OF THE APPLIANCE

If a power failure occurs, even in summer, the freezer could store food normally for some time.

1. Power failure

During a power failure, do not put additional food in the appliance and reduce opening the door frequently.

Place several ice cubes into each freezer drawer if power failure is anticipated beforehand, and place it in the top of the freezer.

2. Power failure during vacation

Before departure of short vacation, remove any items that could spoil if a power failure occurs. Ensure the door is closed firmly.

If going on a long vacation, remove all items, defrost the appliance, clean and wipe dry the internal of the appliance, prior to disconnecting the power and leave the door open.

3. Storage of appliance

If the freezer will be stopped for a long period of time (storage), remove all items, defrost the appliance, clean and wipe dry the internal of the appliance, unplug the appliance from the power outlet. The door should be kept open in order to prevent unpleasant odours.



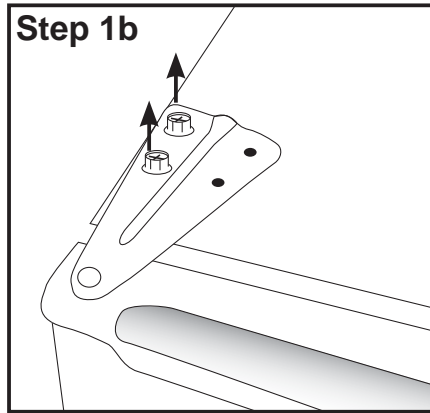
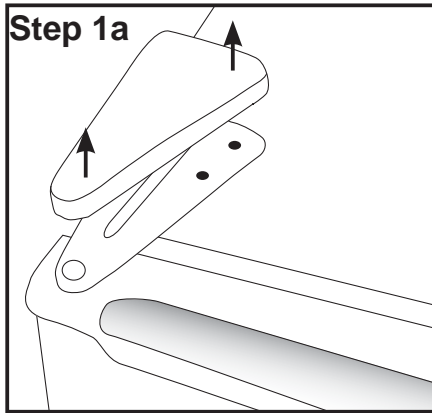
WARNING

After unplugging the appliance from the power outlet, please leave at least 5 minutes before reconnection.

REVERSING THE DOOR

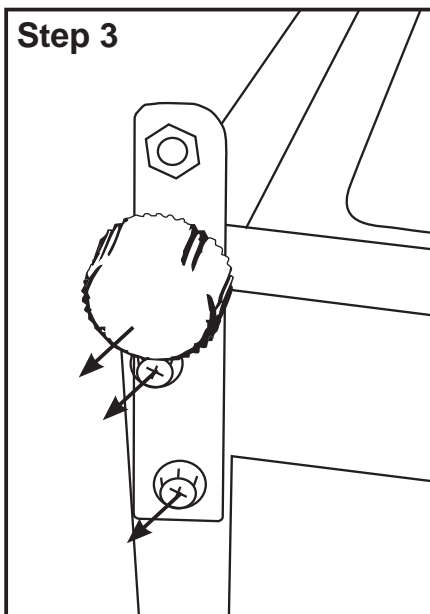
Follow these steps to reverse the door from the supplied position.

Step 1. Remove the cover from the door hinge and remove the two screws holding the hinge bracket.

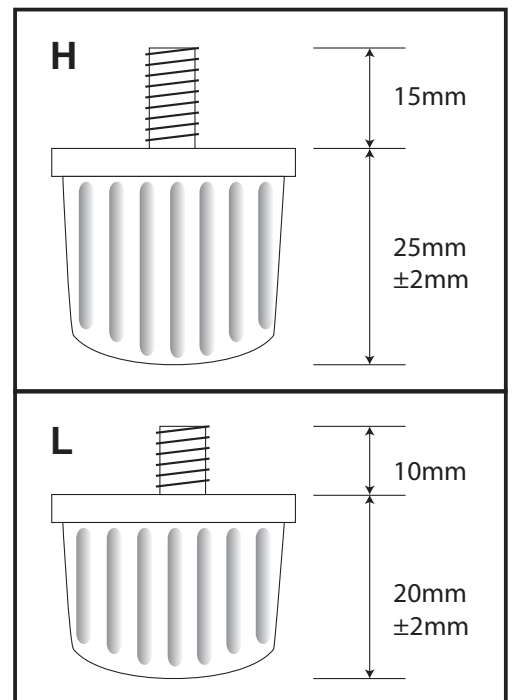


Step 2. Lift the door from the hinge. Place the door in a safe location to avoid scratches or damage.

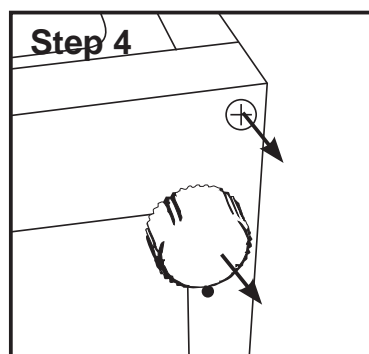
Step 3. Carefully tilt the freezer back so the under side can be accessed. Remove the adjustable leg and the two (2) bolts. Remove the hinge.



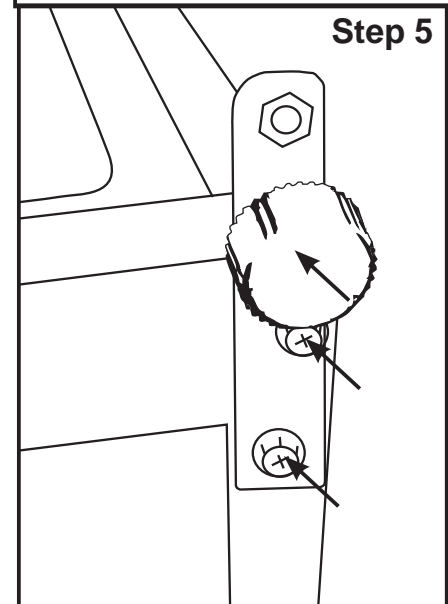
NOTE: The adjustable foot attached to the hinge (figure marked L on right) is designed to be used only with the hinge. It is shorter than the adjustable leg on the opposite side (figure marked H on right).



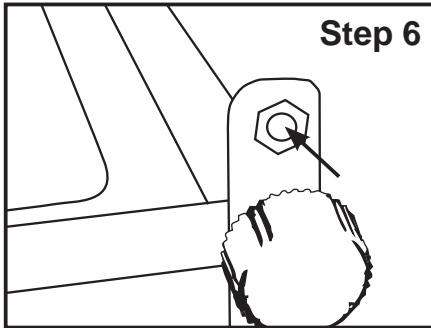
Step 4. Remove the frame screw from the upper right corner (refer to Step 7) and unscrew the adjustable leg. Ensure the two bolt holes are accessible.



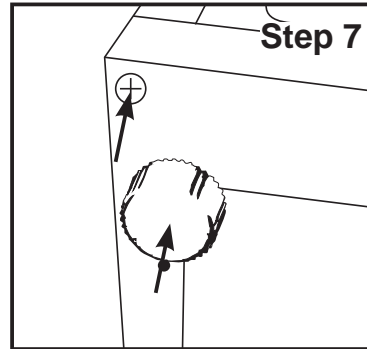
Step 5. Fasten the bracket to the right side of the freezer. Do not tighten completely to enable slight adjustments to the door once in place. Fasten the adjustable leg.



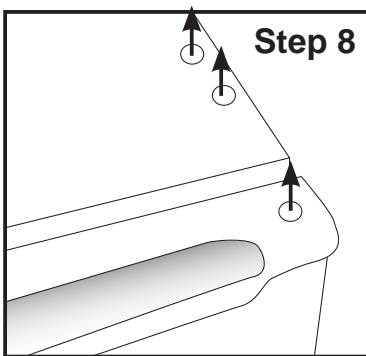
Step 6. The hinge pin must be removed and relocated onto the opposite side of the bracket. Remove the nut and washers, relocate the pin, then fasten. The hinge pin should now be pointing upward for the door to fit onto.



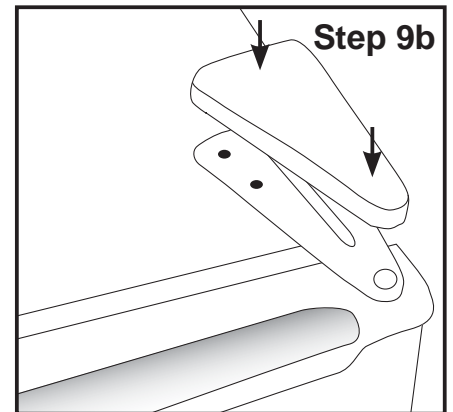
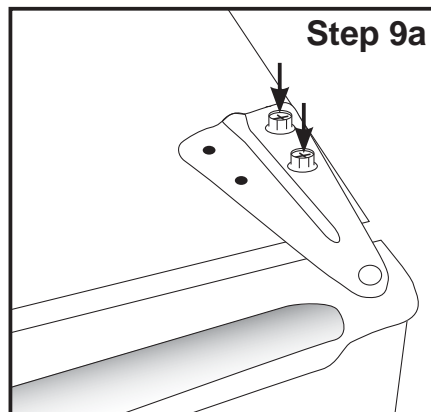
Step 7. Fasten the adjustable leg and frame screw into the left side of the freezer.



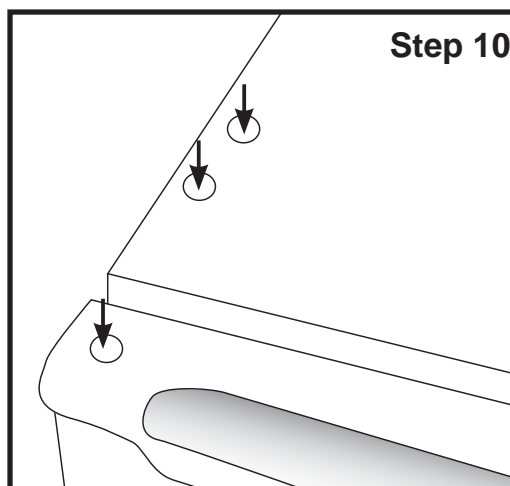
Step 8. Remove the caps covering the bolt holes and door from the right top side. Place the door onto the bottom hinge pin.



Step 9. Place the hinge on the right side and align the holes before screwing in bolts. Do not tighten bolts completely until after aligning the door and ensuring proper seal between the door and the freezer.



Step 10. Once the door is in place and all bolts (top hinge bracket and bottom hinge bracket) are securely tightened, insert caps on left side of the freezer and door.



TROUBLESHOOTING

The following cases are not malfunctions:

1. Moisture may form as condensation on the outside of the appliance during humid conditions. To remove excess moisture, wipe clean.
2. The flow of refrigerant through the pipeline coil could cause gurgling, similar to water boiling. This is the normal function of the appliance.
3. It is normal that the sides of the appliance will get warm as a result of the refrigeration system operation.
4. Do not place objects on top of the appliance which are magnetic, heavy, or filled with water.
5. The appliance operation could cause electrical interference to electrical equipment.

SYMPTOM: The freezer does not work.

SUGGESTION: It may not be connected to the power supply (plug, power failure or blown fuse) and switched on. Check that the temperature dial is not set to 0 position.

SYMPTOM: The freezer does not work efficiently as expected.

SUGGESTION: It may be caused by heavy frost on the ice box compartment, by a warm temperature setting or by frequently opening the door, or low voltage.

SYMPTOM: It makes an unusual noise.

SUGGESTION: It may be caused by an unbalanced appliance or unstable surface, vibration from an object on top of, behind or beside the appliance.

SYMPTOM: The compressor keeps working for a long period.

SUGGESTION: The environment temperature may be too high. The doors may be opened frequently or even left open. The temperature control knob setting in (4-6) position may increase the working time of compressor. Large amounts of warm food recently placed in the appliance.

SYMPTOM: Unpleasant odours.

SUGGESTION: Interior may need cleaning. Some foods produce strong odours, some containers can also cause odours. Food should be packed tightly before being put inside the appliance. Please check whether there is any spoilt items left in the appliance.

SYMPTOM: Heavy frost occurs in the ice box compartment.

SUGGESTION: Make sure the door is fully closed.

SYMPTOM: Freezer temperature is too cold.

SUGGESTION: Check the position of the temperature dial located at rear.

REPAIRS, SERVICE & WARRANTY

It is hazardous for anyone installing, removing, altering, repairing, servicing, testing or certifying the gas system of a gas device (i.e. charging, discharging or breaking into the refrigeration system that uses hydrocarbon refrigerants).

Only an authorised person can carry out servicing or repairs to this appliance. In Queensland the authorised person must hold a Gas Work Authorisation for hydrocarbon refrigerants, before carrying out servicing or repairs which involve the removal of covers.

Individuals will need to hold appropriate refrigeration/air conditioning competencies and also training in hydrocarbon refrigerants. This type of authorisation is provided to individuals only.

IF SERVICE IS REQUIRED:

If you have a problem, and the problem persists after you have made the checks mentioned above, contact:

08 9477 1111

Complete and retain the following information:

Name of retailer: _____

Date of purchase: _____

Model No. : _____

Serial No. : _____

MFG code: _____

Please retain proof of purchase for warranty claims.

SPECIFICATIONS

Model	PUF80WH	
Climate class	T	
Classification of installation and use	Class 1 Indoor use only	
Rated Total Gross Volume (L)	81	
Voltage (V)	230	
Frequency (Hz)	50	
Noise Level (dB)	39	
Refrigerant type	R600a	
Max. Ambient Operating temp (°C)	43	
Dimensions (mm)	Height	845
	Width	494
	Depth	546
IP rating	IPX0	
Net Weight (Kg)	29	



IMPORTANT: If your appliance appears not to be operating correctly, then you should disconnect it from your mains supply and then contact the Customer 7UfY Department.

DO NOT ATTEMPT TO REPAIR THE APPLIANCE YOURSELF.

Please note that if an engineer is asked to attend whilst the product is under guarantee and finds that the problem is not the result of an appliance fault, then you may be liable for the cost of the call out charge.

The appliance must be accessible for the service technician to perform any necessary repair. If your appliance is installed in such a way that a service technician is concerned that damage will be caused to the appliance or your kitchen, then he will not complete a repair.

This includes situations where appliances have been tiled in, sealed in with sealant, have wooden obstructions placed in front of the appliance, like plinths. Or any installation other than the one specified by the manufacturer has been completed.

IMPORTANT: The manufacturer operates a policy of continuous improvement and reserves the right to adjust and modify its products without prior notification.

próssimo

Think Appliances Pty Ltd.

416-424 Barry Rd
Coolaroo VIC 3048

Sales Telephone

1300 132 824

Service Telephone

1800 444 357

Website

www.thinkappliances.com