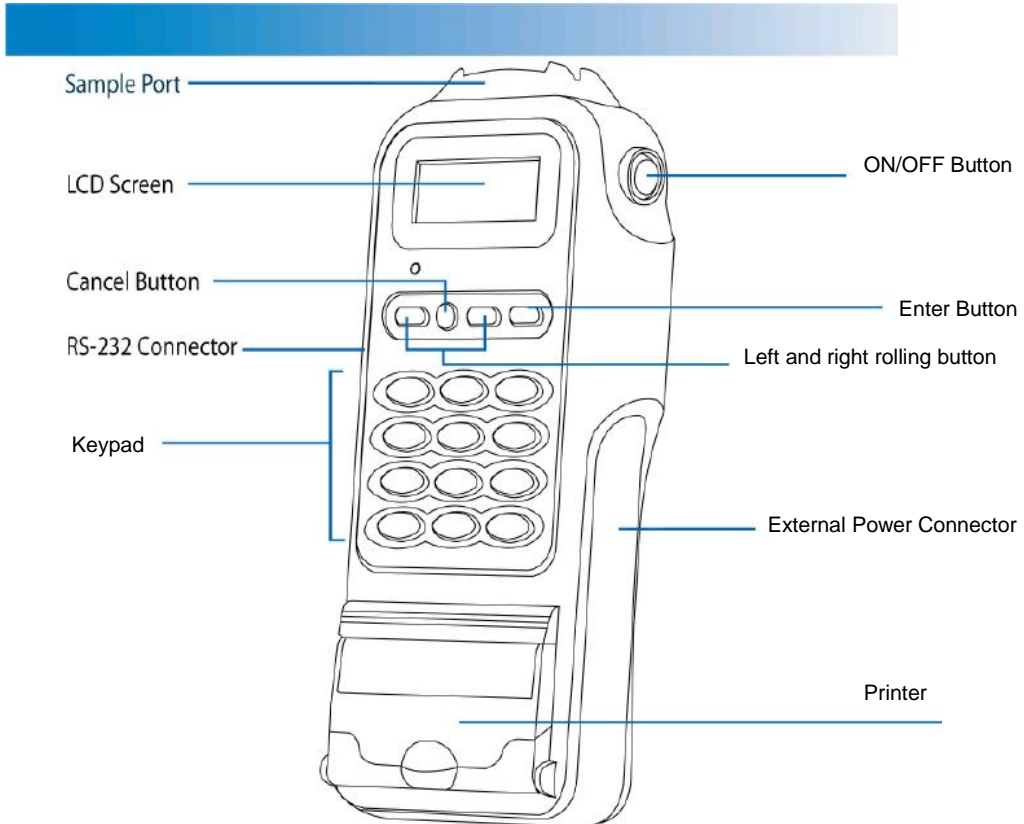


Andatech® AlcoSense® PRECISION II
User Manual

TABLE OF CONTENTS

- 1. INSTRUMENT FEATURES
- 2. INTRODUCTION
- 3. PER-TEST CONDITIONS
- 4. OPERATING INSTRUCTIONS
- 5. KEYBOARD
- 6. OTHER MENU FUNCTIONS
- 7. PRINTER



OPERATOR NEEDS TO READ THIS MANUAL AND BECOME FAMILIAR WITH THE ABOVE FEATURES BEFORE USING AND RETAIN THE MANUAL FOR FUTURE REFERENCE.

INSTRUMENT FEATURES

PLEASE REFER TO DIAGRAMS ON PAGE 2

1. DISPOSABLE MOUTHPIECE

For sanitary reasons each mouthpiece is individually packed and sealed. New mouthpiece should be attached to sample port of the AlcoSense® PRECISION II for each test to prevent any contamination from the previous sample. Attach the mouthpiece to the sample port of the AlcoSense® PRECISION II

2. LCD DISPLAY

A highlighted LCD display that will display corresponding instructions and alcohol concentration of the subject being tested Ability to change the contrast of the display for easy readout for the operator depending on lighting conditions.

3. ENTER BUTTON

Use the **ENTER** button to manually take a sample if subject is unable to provide a valid sample when **MANUAL TEST** is highlighted on the display. The **ENTER** button is also used by supervisors to access various commands in the menu screen.

4. ON/OFF BUTTON

Press the ON/OFF button to turn the AlcoSense® PRECISION II on or off.

5. EXTERNAL POWER CONNECTOR

Connector for 12v car (cigarette) adapter or optional 12v AC power transformer.

6. RS-232 CONNECTOR

Use an RS-232 cable to upload subject tests stored in the AlcoSense® PRECISION II memory and access supervisory menu functions.

7. Keyboard

Use keyboard to input the character into the AlcoSense® PRECISION II.

8. Cancel Button

Use the "CANCEL" button to delete the character you inputted or cancel the action you did.

INSTRUMENT FEATURES

The AlcoSense® PRECISION II is a state of the art instrument used to detect Ethyl Alcohol from a valid breath sample. The AlcoSense® PRECISION II uses an electrochemical fuel cell to measure the concentration of alcohol from the sample of expired breath from a human subject. If alcohol is present, a corresponding voltage is generated from the fuel cell which is proportional to the alcohol content of the sample provided by a human subject. This voltage is then sent to the CPU and converted to a subject's BAC which is then displayed on the display of the AlcoSense® PRECISION II.

Instrument Features

1. Test record storage can be as high as 2000 entries depending on version of software being used. Capability of uploading subject tests for record keeping.
2. Use of the disposable mouthpiece to prevent foreign matter from entering the AlcoSense® PRECISION II.
3. A hard metal case is included for storage of the breathalyser and accessories for easy transport. When not in use, the breathalyser should be stored in its metal case to prevent damage from occurring.
4. Ability to run as often as needed. Recovery time between tests on average is 30 seconds between positive tests.

The AlcoSense® PRECISION II will indicate battery power by displaying a picture of the battery and level of power left in battery. A cigar plug adapter is also included for use by the operator.

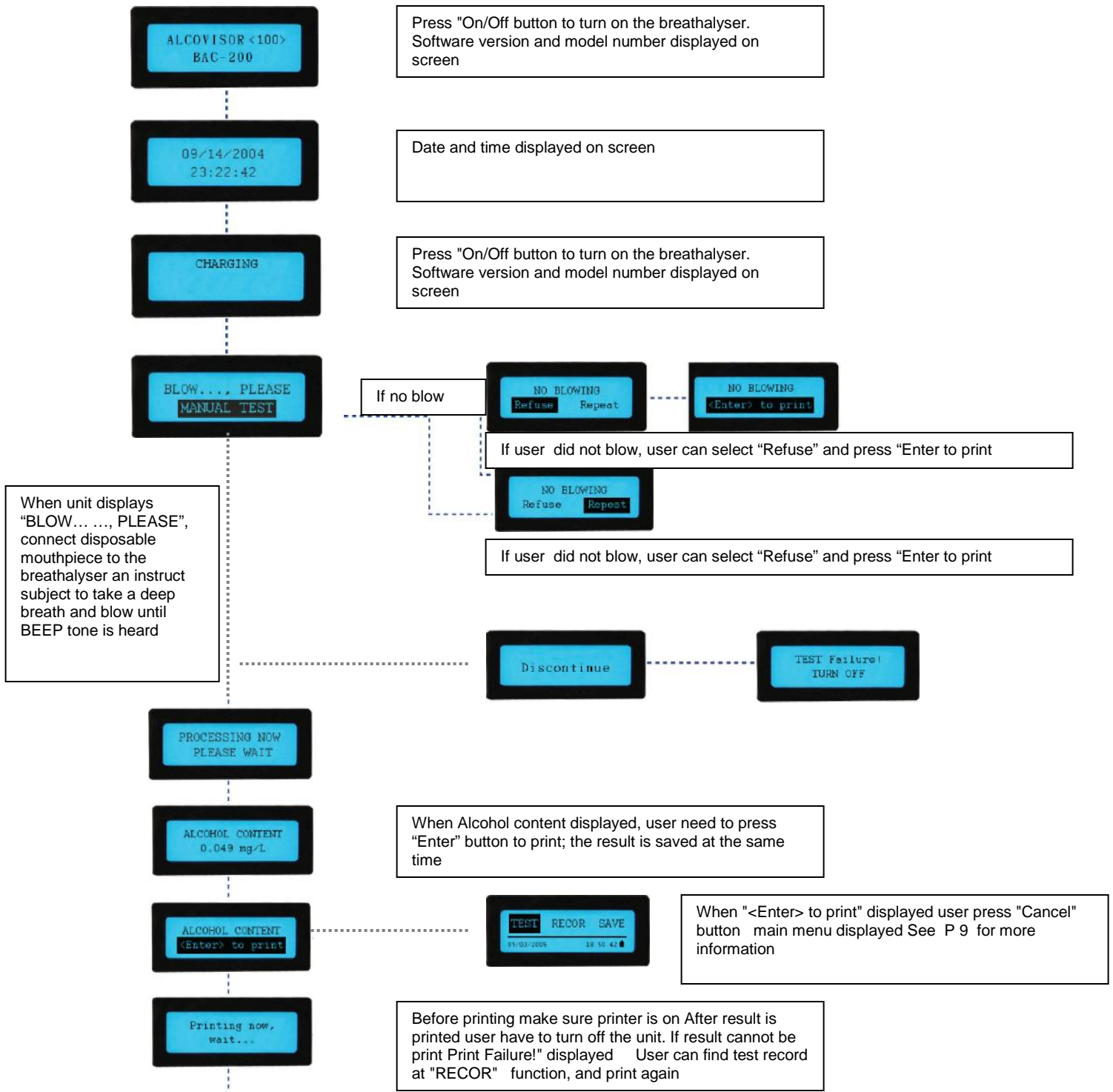
PRE-TEST CONDITIONS

Operating temperature range of the Breathalyser is $-5^{\circ}\text{C} \sim 40^{\circ}\text{C}$. Use of the AlcoSense® PRECISION II within this temperature range will limit condensation from a subject's breath to insure an accurate reading from a breath sample.

It is recommended that the operator observe the subject for about 20 minutes before administering the breath test to insure that nothing is consumed or expelled from the mouth of the subject. Following this procedure will eliminate readings from mouth alcohol.

Eliminate all sources of Radio Frequency interference (i.e. transmitting portable radios; cell phones, etc.) when conducting a subject test with the breathalyser.

OPERATING INSTRUCTIONS



OPERATING INSTRUCTIONS (Keyboard not in use)



To activate "Keyboard" see P. 9.
When "Keyboard" has been activated, user should see the following screen after turn on the AlcoSense® PRECISION II



To input letter and number. "A" = press number 2 two times "L" = press number 5 four times "p" = press number 1 two times "1" = press number 1 one time

To cancel input letter or number, just press "Cancel" button

OTHER MENU FUNCTIONS

To access supervisory functions, the AlcoSense® PRECISION II must be turned off Press and hold the "Right Rolling" button while turning the AlcoSense® PRECISION II on After several seconds, the menu screen will appear on the display To access a menu option, simply press the FUNCTION button until the function you want to perform is highlighted and press the ENTER button A description of the menu functions is provided below



Date

Clock

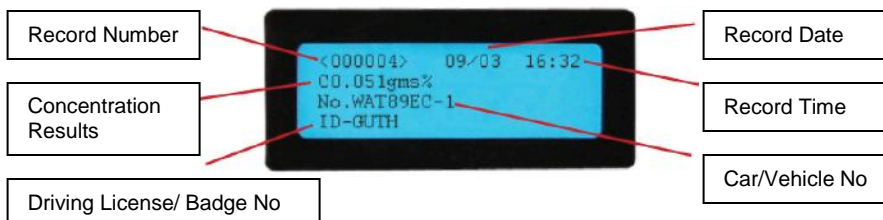


Battery level

To access supervisory functions, the AlcoSense® PRECISION II must be turned off Press and hold the "Right Rolling" button while turning the AlcoSense® PRECISION II on After several seconds, the menu screen will appear on the display To access a menu option, simply press the FUNCTION button until the function you want to perform is highlighted and press the ENTER button A description of the menu functions is provided below

RECORD

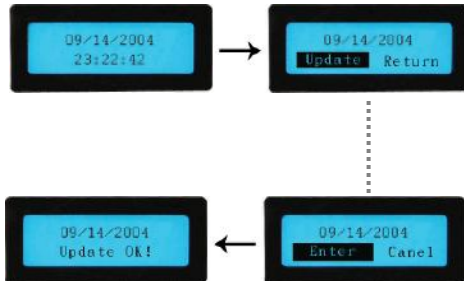
AlcoSense® PRECISION II will display all data from all subject tests Use left or right rolling button on keypad to display previous or later test records When finished reviewing records, press cancel to return to main menu



OTHER MENU FUNCTIONS

SAVE

Using the RS-232 cable to upload subject tests from the AlcoSense® PRECISION II. Using available software to a spreadsheet on your computer


TIME

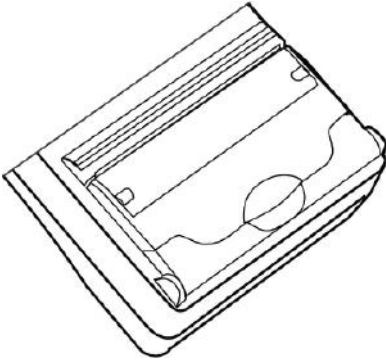
To update the time, press the ENTER button. Highlight update and press the enter button. Press the FUNCTION button to move the highlighted cursor to the number you want to change Using the keypad displayed on your computer, change the date and time When you are finished press the ENTER button and display will show "Update OK"

SETUP

There are 4 options under the "SETUP" menu and can be selected by using the "FUNCTION" button to highlight the desired option

1. ALERT CONC change the tone depending on the concentration level detected by the AlcoSense® PRECISION II
2. PRINT COPIES does not apply to the WAT unit as no printer is used.
3. CONTRAST use this option to change the contrast of the display.
4. KEYBOARD use or no use keyboard
5. PASSWORD used only by certified technicians to enter the calibration menu

PRINTER

**CAUTION!**

Please use 4 pieces rechargeable batteries. Batteries capacity no less than 1800mAh. The rechargeable batteries that power the AlcoSense® PRECISION II or printer must be disposed of properly and may need to be recycled. Refer to your battery's label for battery type. Contact your local recycling centre for proper disposal methods. Never dispose of batteries in a fire because they may explode.

CHANGE PAPER

To change paper, pull the handle. When inserting a new roll of paper, make sure glossy side of paper is keep close to dentation.

BATTERY LIFE

Four full charged 2200mAh rechargeable batteries can print around 30 meters paper when Battery power is under the standard output power, the printer indicating lamp signal three flash a tram

MEASUREMENTS AND CONDITIONS FOR TEST

- Use a new mouthpiece for each test.
- There must be an interval of at least 15 minutes after alcohol has been taken into the mouth. Residues of alcohol in the mouth may give false measurements. Such residue may be left by aromatic drinks, mouthwash, medicines, and drops, as well as by belching and vomiting. Rinsing out your mouth with water or non-alcoholic drinks do not substitute for an interval.
- BAC can continue to rise for up to 2 hours after drinking alcohol. If a caution result or a result is close to designated BAC, it is recommended to wait and retest after 20 minutes.
- It can take 10 hours or more for the alcohol level to return to a zero after a high blood alcohol level has been reached. A further test should be carried out later in the day or the following morning.
- Working temperature of AlcoSense® PRECISION II should be between 5° C to 40°C,
- Storage temperature of AlcoSense® PRECISION II should be -15°C to 65°C

LIABILITY FOR PROPER FUNCTION OR DAMAGE

The liability for proper functioning of the instrument is irrevocably transferred to the owner or operator to the extent that the instrument is serviced or repaired by personnel not employee or authorised by Andatech Corporation Pty. Ltd. . Therefore, the warranty will be void.

EFFECTS OF ALCOHOL ON THE HUMAN BODY

Alcohol is a central nervous system depressant. This means that it slows down the processes occurring in the higher centres of the brain resulting in such classical symptoms as loss of balance, poor coordination of the eyes and limbs, tunnel vision, and inability to be self-critical, with the result that the drunken driver genuinely believes himself to be driving better and more safely than he or she really does.

WARRANTY

Manufacturer warrants for 1 year for the product to be free from defects in workmanship or material (excluding re-calibration) in normal service from the date of purchase. Manufacturer's obligation under this warranty is limited to replacing adjusting or repairing the unit if returned along with proof of purchase. This warranty is void if the unit has been tampered with, damaged or abused in any way.

RECALIBRATION AND SERVICE

The AlcoSense® PRECISION II uses a sensor to measure blood alcohol levels. Depending upon the amount of alcohol registered by the sensor after a period of time, it will require a re-calibration. If the AlcoSense® PRECISION II is for heavy commercial use, the manufacturer recommends this is done every 6 months (or up to 500 uses). For Normal use, calibration required every 6-12 months.

For recalibration and technical support, please contact us at:

Andatech Pty Ltd Hot line:

1300 800 200

Or

www.andatech.com.au

DISCLAIMERS

1. This product must be used strictly in accordance with the instructions in this manual
2. This product is intended to provide the user with an indication of alcohol on the breath. However, neither the manufacturer nor the supplier gives any warranty (express or implied) that the product can give any indication of blood alcohol level.

3. A person's BAC (Blood Alcohol Concentration) can only be accurately measured by the administration of a blood test. This product only measures breath alcohol content which, in turn, only gives an approximate indication of blood alcohol concentration.
4. In these circumstances the user of this product should not rely on the information provided thereby as an accurate indication of his blood alcohol concentration or of his level of intoxication or of his fitness to drive and in particular should not take any action in reliance on such information as the product can provide no more than an indication of alcohol on the breath.
5. If the user of this product makes any decision or takes any action based on the use of the product such decision or such action shall be at the sole risk of the user and neither the manufacturer nor the supplier assumes any responsibility for such decision or action. In particular, neither the manufacturer nor the supplier shall be in any way liable if the user of the product asserts that the product led him to believe that he was fit to operate a motor vehicle and is subsequently found not to be so fit.

Service Centre

AUSTRALIA :

ANDATECH CORPORATION PTY LTD
Factory 7/2-4 Apollo Court, Blackburn
VIC 3131

Ph : 1300 800 200
www.andatech.com.au

