


IP Installer User Manual

Ver 2.0

MICRODIGITAL INC.
(www.microdigital.co.kr)

Records of Revision				
IP Installer Manual				
Date	Versio	Items	Description	Etc
2010.09.01	v.2.00	Writing	Initial writing for ver2.0	

CONTENTS

1. What is IP Installer?	4
2. How to install IP Installer	5
2.1 Double Click IP Installer icon:  in the CD.	5
2.2 Click Next.....	5
2.3 Locate the destination folder and click Install.....	5
2.4 Click Finish (Complete installation).....	6
3. How to Run IP Installer	7
3.1 Run IP Installer.....	7
3.2 Program menu description.	7
4. IP Setup in LAN	9
4.1 Static IP Assignment.....	9
4.2 IP Assignment by DHCP.....	15
4.3 IP Assignment by PPPoE.....	17
5. Basic Operating Condition Setup	20
5.1 Configuration menu.....	20
6. Camera & Recording Condition Setup	22
6.1 Configuration menu.....	22
7. Firmware Update	24
7.1 Firmware update process.....	24
7.2 Configuration menu.....	24
8. IP Device Live-view	26
8.1 IP Device Live View.....	26

1. What is IP Installer?

- IP Installer is a useful tool to setup IP devices ; IP camera, Network Video Server, Network Video Recorder. It is also used for firmware updating.
- For more details of IP device features and applications, Users manual CD-ROM will help you.
- Basic networking skills, (Examples: IP address, LAN, HUB, Router and network devices), are required to use IP installer. Contact your network service provider or network administrator to obtain basic network information.
- IP Installer is applicable to all FlexWATCH IP device series. This manual is based on the general features, and may be different to each model.

2. How to install IP Installer

2.1 Double Click **IP Installer icon:**  in the CD.

2.2 Click **Next**

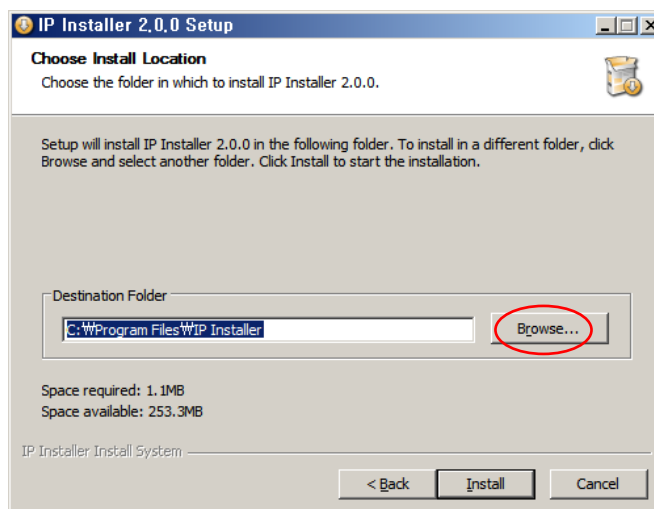
On the welcome page, read the explanatory text and check version of IP Installer, and click **Next**.



2.3 Locate the destination folder and click **Install**.

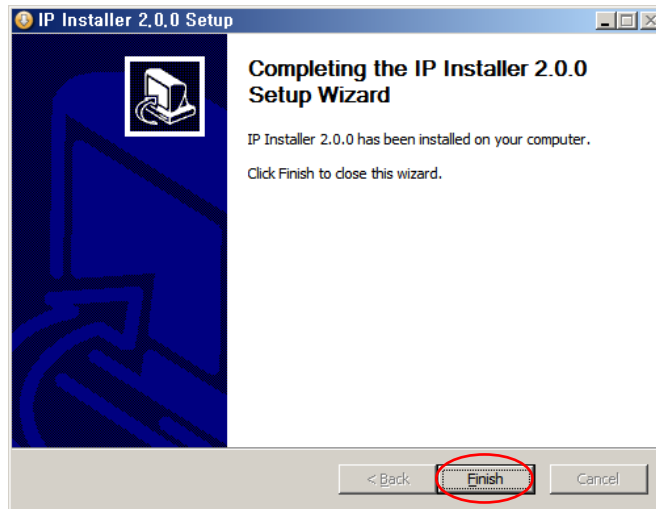
Default location of destination folder is "C:\WProgram Files\WIP Installer".

To install on a different location, click **Browse** and select your location and click **Install**.



2.4 Click **Finish** (Complete installation)

After installation of the IP Installer on your computer, click **Finish** to complete installation. To reinstall or remove/uninstall IP Installer from your system, refer to next page.

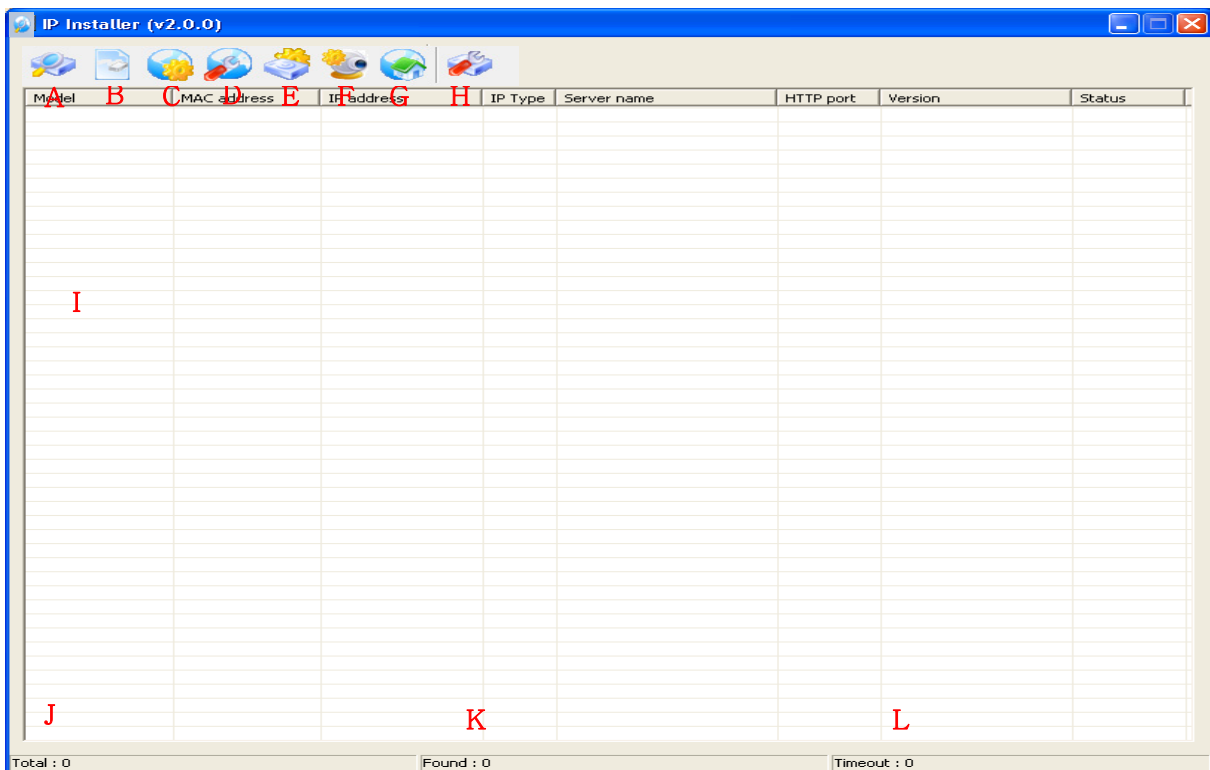


3. How to Run IP Installer

3.1 Run IP Installer

To run IP Installer, double-click the shortcut of IP Installer on your desktop, or go to Start, Program, IP Installer, and click on IP Installer.

3.2 Program menu description.



Menu	Description
A. Search IP Device	Shows the list of IP device in the same LAN of your PC.
B. Clear IP Device list	Clear all the listed IP Devices.
C. Automatic IP setup	Setup IP Network information automatically.
D. Manual IP setup	Setup IP Network information manually.

E. Server Setup	Setup basic operating condition
F. Camera Setup	Setup Camera & Recording Condition Setup
G. Connect IP Device	Connect to the homepage of selected IP devices <i>Notice) Class of IP address should be the same between PC and IP Camera.</i>
H. Update firmware	Update IP Device's firmware.
I. Search List	Displays the list of searched IP devices.
J. Total	Shows the total number of searched IP Devices.
K. Found	Shows the total number of searched IP Devices with normal response.
L. Timeout	Total number of devices with no response.

4. IP Setup in LAN

There are three different ways of IP setup for the network connection of your IP Device

- **Static IP Assignment**

General IP assignment method, to setup public or private static IP address.

- **IP Assignment by DHCP**

IP assignment method, using DHCP to connect IP devices by cable modem or VDSL.

- **IP Assignment by PPPoE**

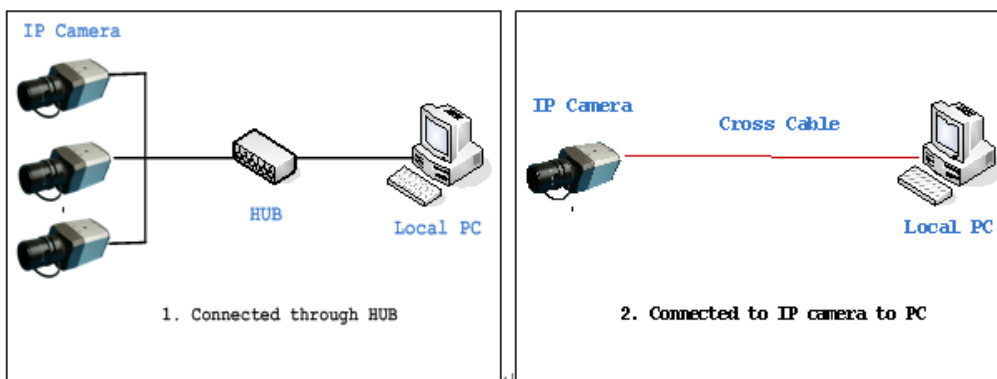
IP assignment method using PPPoE to connect IP devices by xDSL

4.1 Static IP Assignment

A. Manual Setup

It's for when you are going to set a static IP, Public (WAN) or Private (LAN).

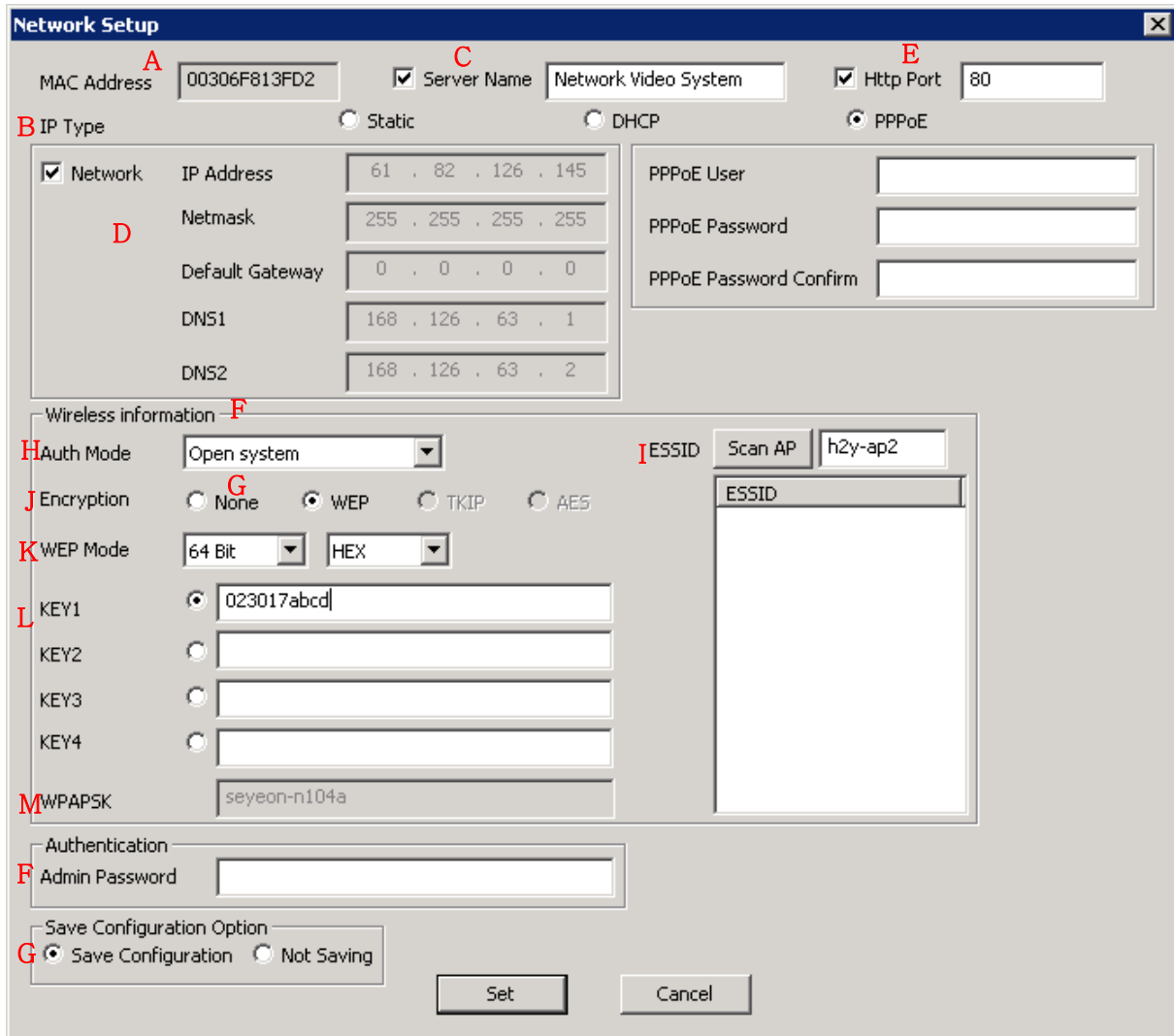
- 1) Connect your PC and IP Device as following diagram.



- If there is a HUB between your PC and IP Device, use **the normal direct lan cables**.
- If your PC and IP Device are directly connected to each other, use **a cross lan cable**.

- 2) Run IP Installer, select an IP device from the search list and right-click on the list to show pop-up menu, click **Manual IP Setup** button.

- If you select only 1 IP Device -



The screenshot shows a 'Network Setup' dialog box with the following fields and options:

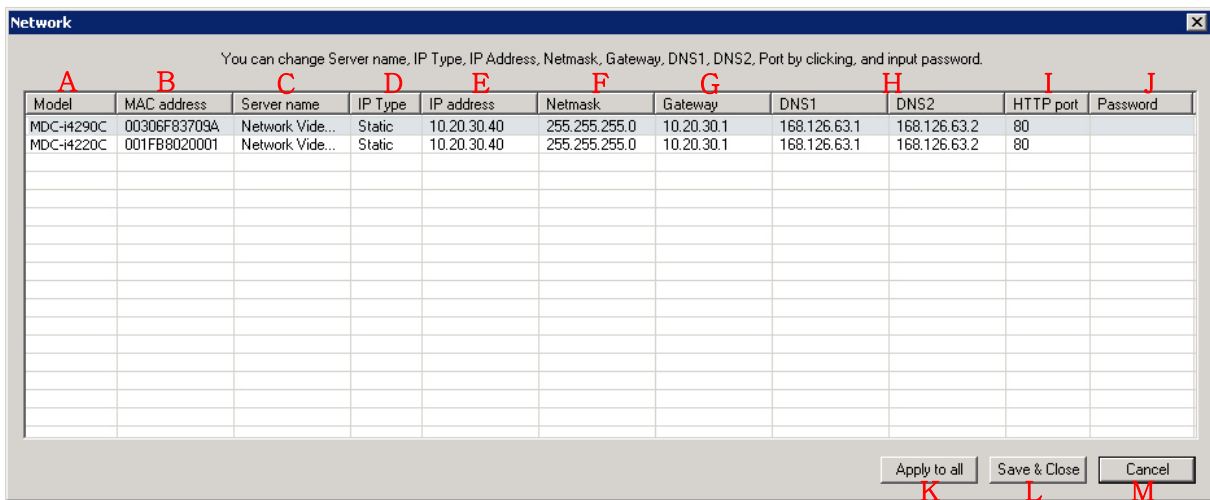
- A** MAC Address: 00306F813FD2
- C** Server Name: Network Video System
- E** Http Port: 80
- B** IP Type: Static (selected), DHCP, PPPoE
- D** Network configuration:
 - Network:
 - IP Address: 61 . 82 . 126 . 145
 - Netmask: 255 . 255 . 255 . 255
 - Default Gateway: 0 . 0 . 0 . 0
 - DNS1: 168 . 126 . 63 . 1
 - DNS2: 168 . 126 . 63 . 2
- PPPoE User: []
- PPPoE Password: []
- PPPoE Password Confirm: []
- F** Wireless information:
 - H** Auth Mode: Open system
 - J** Encryption: None, **G** WEP (selected), TKIP, AES
 - K** WEP Mode: 64 Bit, HEX
 - L** KEY1: 023017abcd
 - KEY2: []
 - KEY3: []
 - KEY4: []
 - M** WPA/PSK: seyeon-n104a
 - I** ESSID: Scan AP: h2y-ap2
 - ESSID list: []
- F** Authentication:
 - F** Admin Password: []
- G** Save Configuration Option:
 - Save Configuration
 - Not Saving
- Buttons: Set, Cancel

Menu	Description
A. MAC Address	Displays the Mac Address of the selected IP Device
B. IP Type	Select 'Static'. (for static IP assignment).
C. Server Name	Type the name of your IP Device if you want to change the name.
D. Network	Specify the general network configuration.

IP Address	Type a proper IP Address to be assigned to your IP Device						
Net mask	A Net Mask is used to divide an IP address into subnets and specify the networks available hosts. Contact your network administrator for more information.						
Default Gateway	Default gateway will be set automatically. (If not, type the given default gateway from your network administrator.)						
DNS1, DNS2	Domain name service is an internet or other type of network server that helps identify domain names.						
E. HTTP Port	Input the web port to access the homepage of IP Device. (The default value is port 80)						
F. Authentication Key	Password for authentication ID is root. The default is root.						
G. Save Configuration Option							
Save Configuration	Save all the changed configurations to the flash memory.						
Not Saving	Do not save any changes.						
<ul style="list-style-type: none"> ● Warning : If selecting no saving, reconfiguration will be needed if the server powers off or reboots. 							
H Authentication Mode	Every AP has authentication process for security reasons. IP Device products support "Open, Shared, WPAPSK, WPA2PSK" authentication modes.						
I ESSID	ESSID(or SSID) stands for an dedicated name of AP(Access Point). Whether typing name of AP manually or select from results after scanning nearby AP.						
J Encryption	Per each mode, encryptions such as WEP, TKIP, and AES can be set. Relationships between authentication and encryption are listed below.						
	<table border="1" style="margin-left: auto; margin-right: auto;"> <thead> <tr> <th>Authentication Mode</th> <th>Supported encryption</th> </tr> </thead> <tbody> <tr> <td>Open, Shared</td> <td>N.A or WEP</td> </tr> <tr> <td>WPAPSK, WPA2PSK</td> <td>TKIP, AES</td> </tr> </tbody> </table>	Authentication Mode	Supported encryption	Open, Shared	N.A or WEP	WPAPSK, WPA2PSK	TKIP, AES
Authentication Mode	Supported encryption						
Open, Shared	N.A or WEP						
WPAPSK, WPA2PSK	TKIP, AES						
K WEP Mode	For WEP, 64bit or 128bit mode can be selected and length of encryption key will be different. For WEP 64bit, 5 digits of ASCII or 10 digits of hex characters will be required						

L Key1~Key4	Among 4 keys, appropriate key should be chosen according to key of AP.
M WPAPSK	For WPASK or WPA2PSK, TKIP and AES can be available and the max length of encryption key is 63 digits of ASCII.

- Selecting more than 2 IP Devices -



You can change Server name, IP Type, IP Address, Netmask, Gateway, DNS1, DNS2, Port by clicking, and input password.

A	B	C	D	E	F	G	H	I	J	
Model	MAC address	Server name	IP Type	IP address	Netmask	Gateway	DNS1	DNS2	HTTP port	Password
MDC-H290C	00306F83709A	Network Vide...	Static	10.20.30.40	255.255.255.0	10.20.30.1	168.126.63.1	168.126.63.2	80	
MDC-H220C	001FB8020001	Network Vide...	Static	10.20.30.40	255.255.255.0	10.20.30.1	168.126.63.1	168.126.63.2	80	

Apply to all (K) Save & Close (L) Cancel (M)

Menu	Description
A. Model	Displays the model name of the selected IP Devices.
B. MAC address	Displays the Mac Address of the selected IP Devices.
C. Server name	Type the name of your IP Device, if you want to change.
D. IP Type	Select 'Static'.
E. IP address	Type a proper IP Address to be assigned at your IP Device.
F. Net mask	A Net Mask is used to divide an IP address into subnets and specify the networks available hosts. Contact your network administrator for more information.
G. Gateway	Default gateway will be set automatically. (If not, type the given default gateway from your network administrator.)
H. DNS1, DNS2	Domain Name Service is an internet or other type of network server that helps to identify domain names.
I. HTTP port	Input the web port to access the homepage of IP Device. (The default value is port 80)
J. Authentication Key	Password for authentication ID is root. The default is root.

<p>K. Apply to all</p>	<p>After setting one item on the list, all the other listed items will have the same values you set. 'Server name' and 'IP address' will automatically have +1 value in order. <i>Notice) Many items can be easily set at once. It's useful when you are installing many items in a project site.</i></p>
<p>L. Save & Close</p>	<p>To apply, save the changed configurations to flash memory and close the window.</p>
<p>M. Cancel</p>	<p>Close the window without saving the changes.</p>

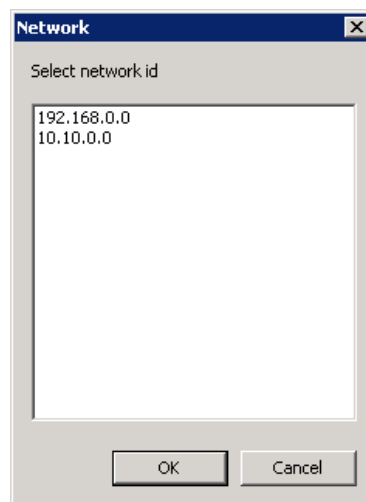
- 3) After IP configuration, click 'Connect' icon to access IP Device. See live view of IP Device or specify system configuration on admin menu. Refer to section '**10. How to see Live view**' and '**User Manual**' for more details of system configuration and live view.

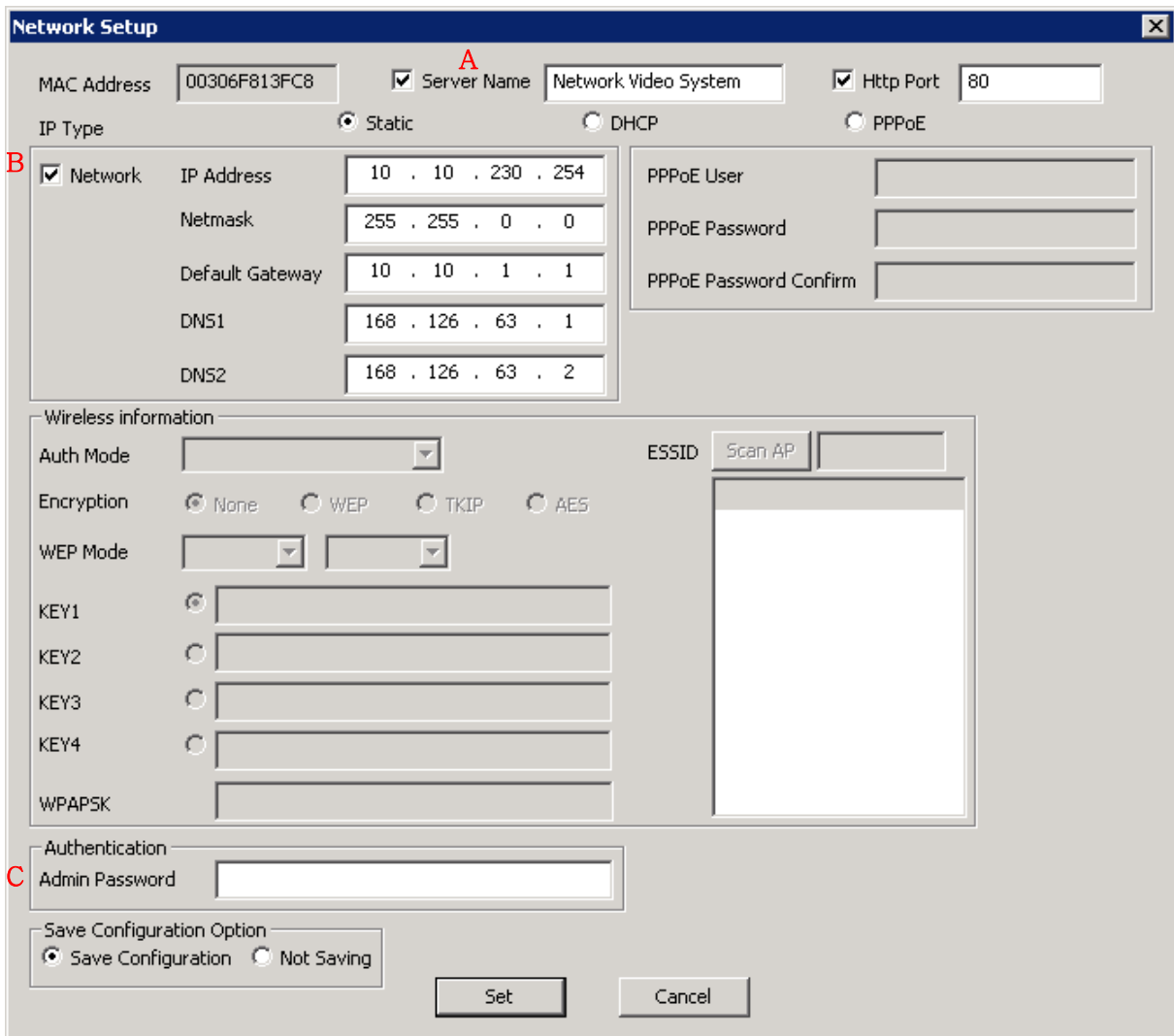
B. Auto Setup

IP Installer can find and recommend you an IP address that is currently not being used in the same network of your PC. Users can apply the auto-recommended IP, or input another IP.

Warning) Any of the auto-recommended IP may cause a network collision and problem if it's already assigned to another device in the same network.

- 1) Connect your PC and IP device in the network.
- 2) Run IP Installer, select an **Automatic IP Device** from the search list and click 'Automatic IP Setup'.
- 3) If there are more than 2 class IP addresses existed at you computer, the following window will pop up to ask which IP address is appropriate for your IP device.





Menu	Description
A. Server Name	Type the name of your IP Device if you want to change.
B. Network	
IP Address	Displays an IP address that is currently not being used in the same network of your PC. Users can apply the auto-recommended IP, or input another IP as you want.
Net mask	Displays the proper net mask value. Users can apply it, or input another value as you want.
C. Authentication Key	Password for authentication ID is root. The default is root.

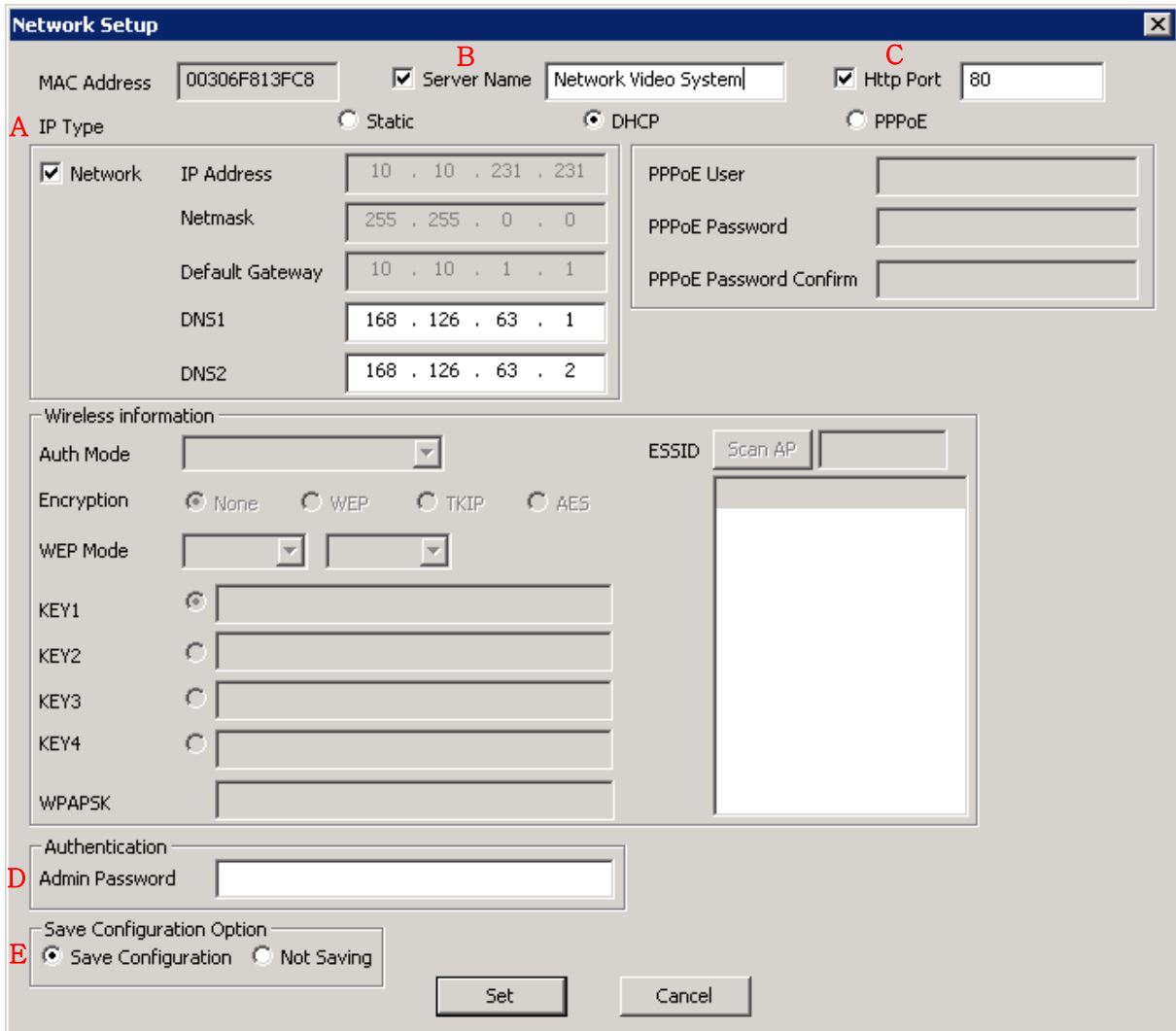
4.2 IP Assignment by DHCP

DHCP method can be used for local area network environment with DHCP server.
Cable modem, VDSL and xDSL with auto-dial up for Internet connection can be used.

- 1) Connect your PC and IP Device in the network.
- 2) Setup a static IP address according to the steps in section '5.1 Static IP Assignment, Manual or Auto Setup'.
- 3) After IP Setup, check if you can access the homepage of IP Device by clicking the "Connect" icon.

Notice) If AOIP service is needed for remote access, make sure to setup AOIP function in the admin menu of your IP Device.

- 4) Run IP Installer again, and select **IP Device** on the search list, Click IP Setup and specify DHCP option.



Menu	Description
A. IP Type	Select 'DHCP'.
B. Server Name	Type the name of your IP Device if you want to change.
C. HTTP Port	Input the web port to access the homepage of IP Device. The default value is port 80.
D. Authentication Key	Password for authentication ID is root. The default is root.
E. Save Configuration Option	
Save Configuration	Save all the changed configurations to Flash Memory.

Not Saving

Close the window without saving any changes.

Warning) If selecting no saving, reconfiguration will be needed if the server powers off or reboots.

4.3 IP Assignment by PPPoE

- 1) Connect your PC and **IP Device** server in the network.
- 2) Setup a static IP address according to the steps in section '5.1 Static IP Assignment, Manual or Auto IP Setup'.
- 3) After IP Setup, check if you can access the homepage of **IP Device** server by clicking the "Connect" icon.

Notice) If AOIP service is needed for remote access, make sure to setup AOIP function in the admin menu of your IP Device.
- 4) Run IP Installer again, and select **IP Device** on the search list, Click IP Setup and specify PPPoE option.

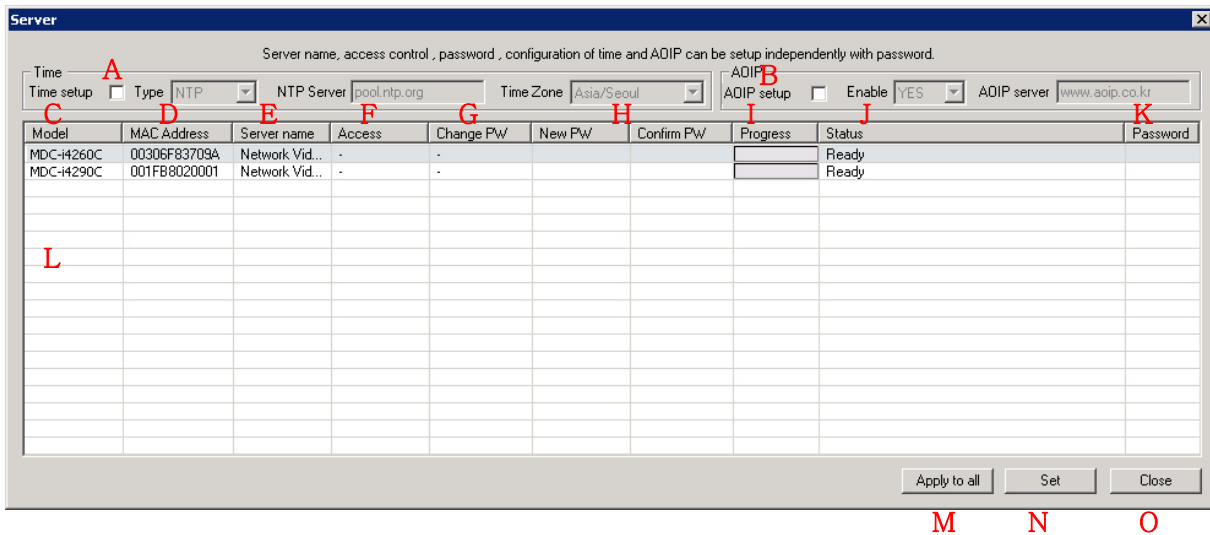
Menu	Description
A. IP Type	Select 'PPPoE'
B. Server Name	Type the name of your IP Device if you want to change.
C. HTTP Port	Input the web port to access the homepage of IP Device. The default value is port 80.
D. PPPoE Setup	You can check out the correct ID / Password from your ISP.
PPPoE User Name	Input ID.
PPPoE Password	Input Password.

PPPoE Confirm	Input Confirmed Password.
E. Authentication Key	Password for authentication ID is root. The default value is root.
F. Save Configuration Option	
Save Configuration	Save all the changed configurations to Flash Memory.
Not Saving	Close the window without saving any changes.
	<i>Warning) If selecting no saving, reconfiguration will be needed if the server powers off or reboots.</i>

- 5) Check if your PPPoE setup is correctly applied, and connect your IP Device to xDSL modem.

5. Basic Operating Condition Setup

5.1 Configuration menu

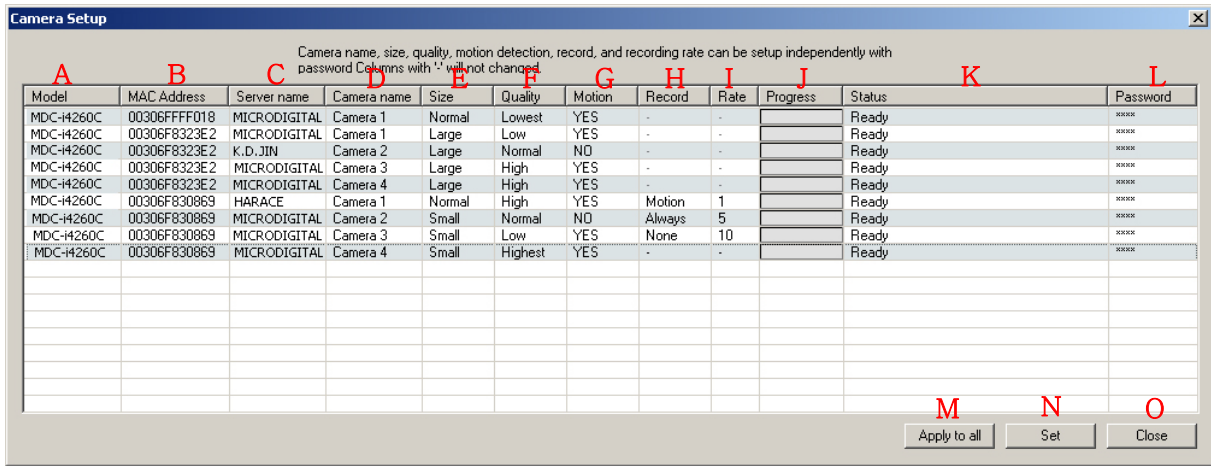


Menu	Description
A. Time setup	Setup the Time information.
Type	If selecting NTP, it can be set and applied via an NTP server. If selecting User, the time information of your PC with IP Installer can be set and applied.
NTP Server	Input a proper NTP server address.
Time Zone	Select a proper Time Zone.
B. AOIP setup	Setup the AOIP service.
Enable	If YES, AOIP service will be enabled. If NO, AOIP service will be disabled.
AOIP server	Input a proper AOIP server address.
C. Model	Displays the model names of the selected IP Devices.
D. MAC Address	Displays the MAC addresses of the selected IP Device.
E. Server name	Type the name of your IP Device if you want to change.

F. Access	Setup the access permission level to IP Device. If select Full, ID/PW is not required to access to IP Device. If select Limited, ID/PW is required to access.
G. Change PW	Select YES if you want to change the Password.
H. New PW	Input the new password.
I. Confirm PW	Input the new password again.
J. Progress	Displays the progress when click 'Set' button.
K. Status	Displays the status of the progress.
L. Password	Input the admin password (root). If not, any changed values cannot be applied.
M. Apply to all	If you click it after setting a listed item, the same values will be automatically applied to the other listed items.
L. Set	Applies the changed settings to IP Device.
O. Close	Close the dialog window without saving.

6. Camera & Recording Condition Setup

6.1 Configuration menu



A	B	C	D	E	F	G	H	I	J	K	L
Model	MAC Address	Server name	Camera name	Size	Quality	Motion	Record	Rate	Progress	Status	Password
MDC-H260C	00306FFF018	MICRODIGITAL	Camera 1	Normal	Lowest	YES	-	-		Ready	xxxx
MDC-H260C	00306F8323E2	MICRODIGITAL	Camera 1	Large	Low	YES	-	-		Ready	xxxx
MDC-H260C	00306F8323E2	K.D.JIN	Camera 2	Large	Normal	NO	-	-		Ready	xxxx
MDC-H260C	00306F8323E2	MICRODIGITAL	Camera 3	Large	High	YES	-	-		Ready	xxxx
MDC-H260C	00306F8323E2	MICRODIGITAL	Camera 4	Large	High	YES	-	-		Ready	xxxx
MDC-H260C	00306F830869	HARACE	Camera 1	Normal	High	YES	Motion	1		Ready	xxxx
MDC-H260C	00306F830869	MICRODIGITAL	Camera 2	Small	Normal	NO	Always	5		Ready	xxxx
MDC-H260C	00306F830869	MICRODIGITAL	Camera 3	Small	Low	YES	None	10		Ready	xxxx
MDC-H260C	00306F830869	MICRODIGITAL	Camera 4	Small	Highest	YES	-	-		Ready	xxxx

Menu	Description
A. Model	Displays the model names of the selected IP Devices.
B. MAC Address	Displays the MAC addresses of the selected IP Devices.
C. Server name	Type the name of your IP Device if you want to change.
D. Camera name	Type the name of your Camera if you want to change.
E. Size	Select the image resolution. <i>Notice) For H.264 supported IP Device, the same image resolution will be applied to the other channels at the same device.</i>
F. Quality	Select the image resolution.
G. Motion	If YES, the motion detection function will be enabled.
H. Record	Setup the recording condition. Motion – Recording only when motion is triggered. ‘Motion’ needs to be set to ‘YES’. Always – Recording always. None – Disable the recording function. <i>Notice) This option is not activated for IP device.</i>
I. Rate	Setup the recording frame rate (fps)
J. Progress	Displays the progress when click 'Set' button.

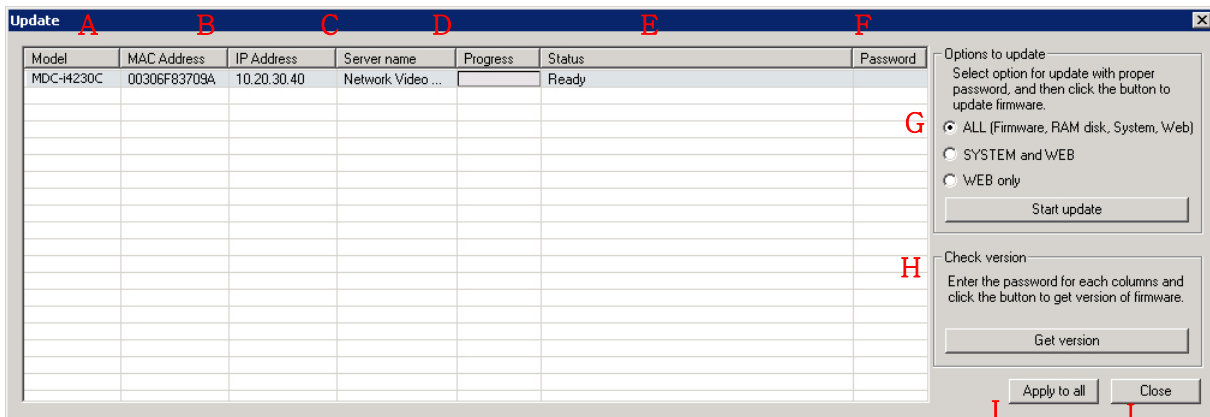
K. Status	Displays the status of the progress.
L. Password	Input the admin password (root). If not, any changed values cannot be applied.
M. Apply to all	If you click it after setting a listed item, the same values will be automatically applied to the other listed items.
N. Set	Applies the changed settings to IP Device.
O. Close	Close the dialog.

7. Firmware Update

7.1 Firmware update process

- 1) Connect your PC and IP Device in the network.
- 2) Run IP Installer and click Search. Select the **IP Device** you need to update the firmware. If IP Setup is not made, assign a static IP address according to the steps in section '5.1 Static IP Assignment, Manual or Auto Setup'.
- 3) Click "IP Device Update" button.
- 4) A new folder will be automatically created under the location of IP Installer files. (C:\WProgram Files\WIP Installer)
For example, 'MC-70VC' folder will be created if MC-70VC model is selected.
- 5) Place the proper firmware files into the folder that has been created at step 4.
- 6) Input the correct password (root), and click 'Start update' button.
- 7) If the update process is completed, **IP Device** will be automatically rebooted.
- 8) Wait until the rebooting is done (2~4 min), and click 'Get version' button to check out the result.

7.2 Configuration menu



Menu	Description
A. Model	Displays the model names of the selected IP Device.
B. MAC Address	Displays the MAC addresses of the selected IP Device.
C. Server name	Type the name of your IP Device if you want to change.
D. Progress	Displays the progress when click 'Set' button.

E. Status	Displays the status of the progress.
F. Password	Input the admin password (root). If not, any changed values cannot be applied.
G. Option to update	Select option for update.
H. Start update	After input the correct password, click start update. <i>Warning) Do not power-off or disconnect IP Device during the update process.</i>
I. Get version	Displays the current firmware version.
J. Apply to all	If you click it after setting a listed item, the same values will be automatically applied to the other listed items.
K. Close	Close the dialog window.

8. IP Device Live-view

After IP assignment, you can examine the live view from IP Device by using standard web browser such as Internet Explorer. Right click on server you wish to connect, click **Connect** icon on IP Installer, then web browser will run and connect to IP Device automatically.

When using static IP, Input IP address on browser to access IP Device. When using dynamic IP as DHCP or PPPoE, connect to AOIP server and access IP Device through AOIP account login.

You can see live-view images on **Live View menu**.

8.1 IP Device Live View

Live View is Active-X control program to see images and control PTZ or AUX. Live View Control program must be installed to see images, if not, it will be installed on Internet automatically. Please install Live View Control from enclosed CD if Internet connection is not present or does not start automatically.

- 1) Click **Live View** on the homepage of IP Device.



- 2) Security warning window will appear. Click **Install**.
- 3) Live-view images will be displayed as below.

