



TAGHeuer

PROFESSIONAL TIMING

**HL 180
ID-Vision**

User Manual

Version 11/2013



Global

TAG Heuer's extensive timing experience and Axis Communication world leading network video products are brought together to formulate a reliable backup and visual reference solution for all active timekeepers.

Delivered with a proprietary software application developed by TAG Heuer, the **ID-Vision** camera provides a reliable and cost effective «visual» backup solution to prevent controversial race finishes and for monitoring and recording locations remotely where normal visual contact is not available.

Recommended use

- Monitor visual order Finish Protocol
- Monitor Pit Lane Entry / Exit where there is no visual contact

Features

- Image recording & time stamping triggered by photocell & CP540
Archived library of Pit Entry & Exit complete with image and overlaid entry / exit time

1. Software installation

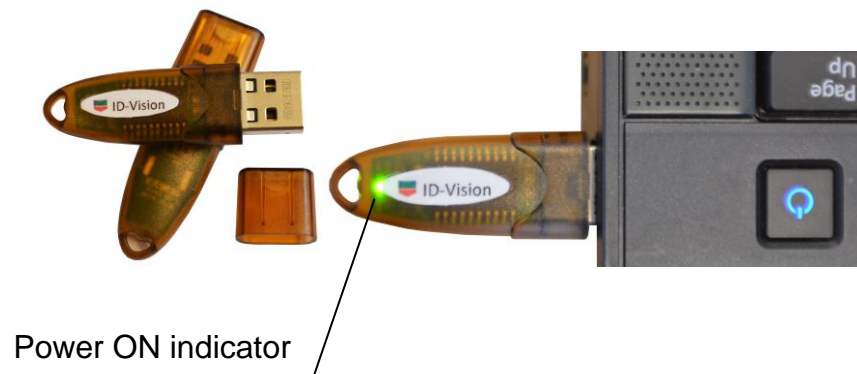
➤ **USB Stick package:**

- Axis Media Controller
- TAG Heuer ID-Vision Software

First install the Media controller (INSTALLME_FIRST.exe)

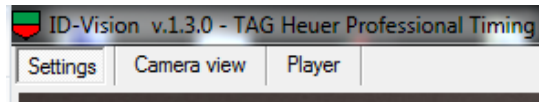
Then install the TAG Heuer ID-Vision Software (ID-Vision v1.X.X.exe)

Before starting the software, ensure that the Hardlock dongle is connected on your laptop or computer. The led should be ON (No drivers are required)

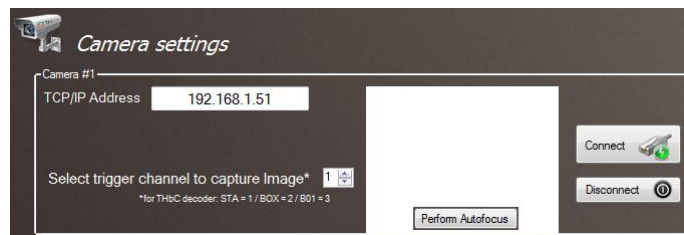


2. Software presentation

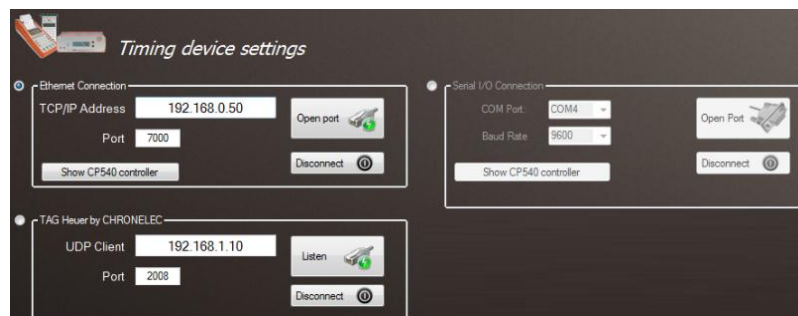
The Software is composed of 3 tab pages: “Settings”, “Camera view” and “Player”



- Settings



This is the settings window in order to connect your camera.
Set the IP Address (default: 192.168.1.51) and select the trigger channel to capture Image.
The trigger channel is the Photocell input used on the Chronoprinter 540 or Minitimer 440.
For TAG Heuer by Chronelec decoder, STA is channel 1, BOX: Input 2, B01: Input 3 etc.



In order to connect your timer, select the connection you want to use.

Ethernet Connection:

- Chronoprinter 540 (default address is 192.168.1.50)
- Start Clock HL940 (with Ethernet Option [Art. Nr. STH940-ETH](#))

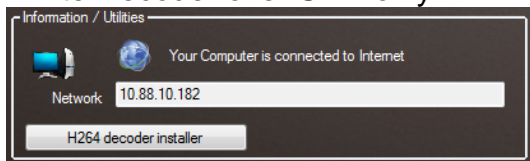
Serial I/O RS232 connection:

- Chronoprinter 540, Start Clock
- Minitimer HL440
- Start Clock HL940

* (you may need a serial to USB Adatpter [Art. Nr. STH100-10](#))

TAG Heuer by Chronolec:

- Elite Decoder over UDP only



Information/Utilities is only a user information window.

There you may see all IPs available on your laptop and Install H264 decoder if requested by the camera.

On the left top hand corner you may select user language and reach the user manual and information window.

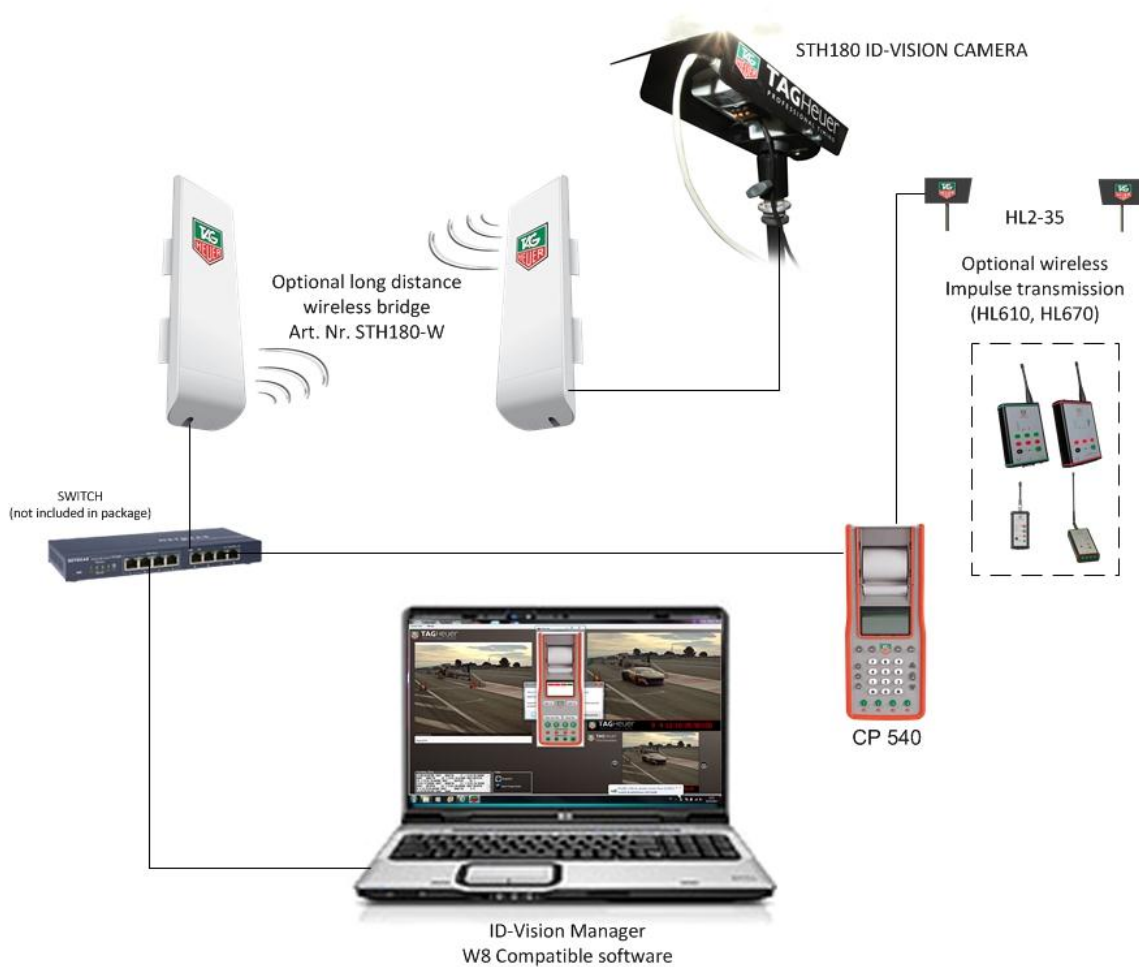


- Camera View
- Player

3. Hardware installation

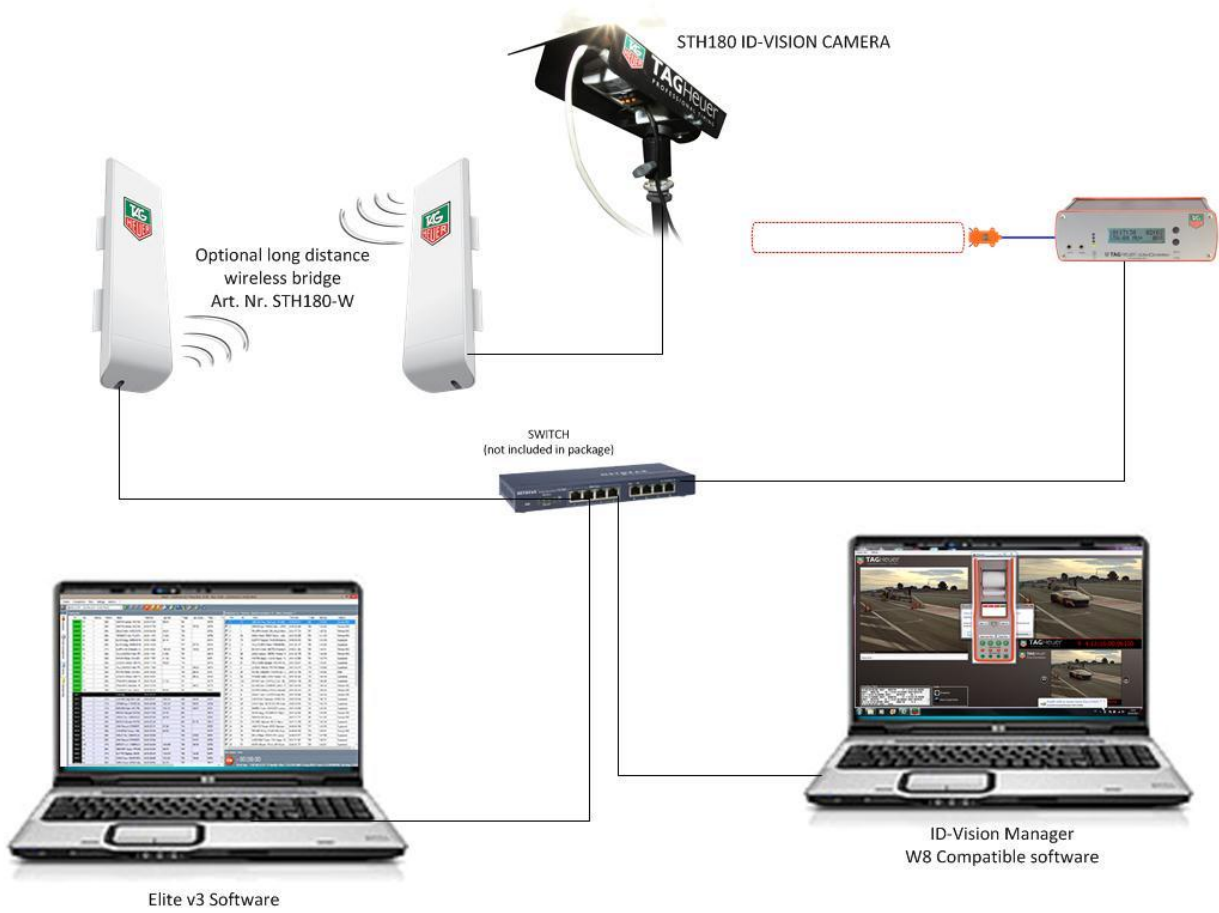
Important Note

The default IP address of the camera is **192.168.1.51**



The wireless bridge option HL180-W allows a long range video stream transmission. With our Impulse radio transmission, it's the perfect combination in order to set the camera on place without visual contact.

Installation with TAG Heuer by Chronelec system:



The ID-Vision Software gives no acknowledge to the decoder. Only Elite v3 can manage this. As both systems are working on the same port, both software should run on two different Laptops.

Be carefull, this is not a real backup installation as the ID-Vision gets the information from the Main system. We advice you to use a separate photocell system.

Technical Specification

General

- High definition camera
- New Axis Lightfinder Technology
- DC-Iris control

Lens

- Varifocal 3 - 8 mm: 82° - 34° view, F1.0

Minimum Illumination

- Color: 0.1 lux, F1.0, B/W: 0.02 lux, F1.0

Compatible devices

- THcom08 Protocol
- (CP540, Minitimer etc..)
- TAG Heuer by Chronolec

External Power

- 8-20 VDC via 2-pole plug
- Power over Ethernet (PoE) IEEE 802.3af

Operating Temperature

- -10° C to + 50° C (-40 °F to 122 °F)
- Humidity 10 – 85% RH (non-condensing)

Indicators

- Network/Function Status led

Mounting

- Standard photo ¼" tripod HL5 or TAG Heuer brackets HL 4 / HL 4-3

Dimensions

- Thermocoated black aluminium case
280 x 105 x 50 mm

Weight

- 950g (with cover)

Warranty :



Two years after delivery of your purchase

The warranty is null and void under the following conditions:

- Poor maintenance and obvious physical damage
- If the device was opened without factory authorization
- Damage due to water, snow or Ice

THE PACKAGE INCLUDES:

<ul style="list-style-type: none">▪ 1 Axis Camera▪ 1 Power over Ethernet unit (PoE)▪ 1 Timing Mini-Bag Art. Nr. HL310▪ 1 Neoprene Bag Art. Nr. HL314▪ 1 Cat.5 Ethernet cable 15m▪ 1 Cat.5 Ethernet cable 1m	<ul style="list-style-type: none">▪ 1 Camera black painted cover▪ 1 Cover support
--	--



TAGHeuer

PROFESSIONAL TIMING

TAG Heuer
PROFESSIONAL TIMING

6A Louis-Joseph Chevrolet
2300 la Chaux-de-Fonds
Switzerland

Tel : 032 919 8000
Fax : 032 919 9026

E-mail: info@tagheuer-timing.com
Http: //www.tagheuer-timing.com