



Please read carefully before use

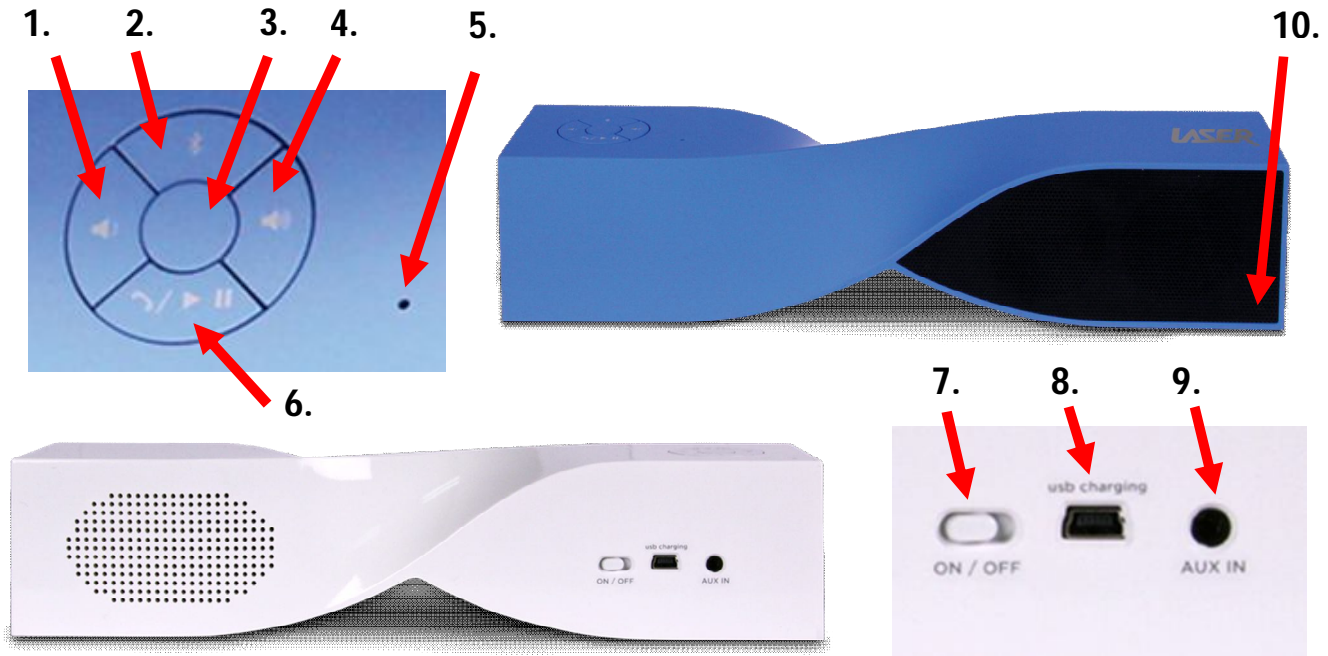
## TABLE OF CONTENTS

Important safety instructions and precautions .....	2
Whats in the box .....	3
Charging the SPK-BT202 .....	3
Switch ON/OFF the SPK-BT202 .....	4
Connect to PC or media player without bluetooth .....	4
Pairing the SPK-BT202 with.....	4
Mobile Phone (HSP – Head Set Profile) .....	5
iPad or iPhone .....	5
PC (or Notebook) .....	5
Mac OS X 10 or above.....	6
Receiving calls with SPK-BT202 .....	6
Music playback controls .....	7
LED and tone indications: .....	7
Trouble Shooting / Q & A.....	8

## IMPORTANT SAFETY INSTRUCTIONS AND PRECAUTIONS

- Read all instructions carefully before use.
- Retain manuals for future reference.
- Use this product only in the manner described.
- Only use a water-dampened soft-cloth to clean the surface of this product.
- The following will damage this product: any liquid such as water or moisture, extreme heat; cold; humidity, dusty or sandy environments.
- It is recommended to thoroughly charge electronic devices for the first time overnight. Subsequent charges can be as needed. During charging, or extended use, the product may become warm.
- There are no user serviceable parts in this product.
- Un-authorized attempts to dismantle or repair this product will void product warranty
- Using this device near other electronic devices may cause interference.
- Do not use this product in electrical storms.

## PRODUCT CONNECTIONS AND USE



1. Volume: Down
2. Bluetooth Connecting Button
3. Power Button- Press and hold to activate the unit
4. Volume: Up
5. Microphone
6. Answer phone call / Play or Pause music
7. On / Off slide switch
8. Mini USB charging port
9. AUX in (Auxiliary device input via 3.45mm audio jack)
10. LED charging indicator

## WHATS IN THE BOX

SPK-BT202, mini USB charging cable, AUX 3.5mm audio cable, user manual

## CHARGING THE SPK-BT202

It is recommended to thoroughly charge electronic devices overnight before using it for the first time. Subsequent charges can be as needed

1. Turn off the SPK-BT202 before charging
2. Connect the SPK-BT202 using the supplied USB cable to a power source such as PC or USB charging device.
3. When the red indicator light is on, the speaker is in charging mode
4. When the red light changes to blue, the speaker is fully charged

*Note: Your SPK-BT202 takes up to 3 hours to fully charge*

### SWITCH ON/OFF THE SPK-BT202

Function	Operation
Switch on	Press and hold the <b>POWER BUTTON</b> until the RED back-light appears, then release. An audio confirmation will then be heard
Switch off	Press and hold the <b>POWER BUTTON</b> until the RED back-light appears, then release. An audio confirmation will then be heard

### CONNECT TO PC OR MEDIA PLAYER WITHOUT BLUETOOTH

Connect the AUX cable to the audio input on your SPK-BT202 and the other end to you PC or media player device.

### PAIRING THE SPK-BT202 WITH

*Note 1: Follow the below three common steps, before moving onto the specific section relating to your device.*

*Note 2: Before you begin, ensure your SPK-BT202 and Bluetooth device are within 1 meters distance from each other.*

*Note 3: Once you have started the Bluetooth pairing procedure, there is a set period of time in which the pair must be completed. Usually up to 30 seconds depending on your device. Once this time has elapsed you may need to begin the process again.*

*Note 4: After pairing is successful, paired devices will remember each other. Unless a new device has been paired, re-pairing is not required during subsequent uses of the same device.*

*Note 5: If you want to pair the speaker with other devices, please make sure the last device has been disconnected, and then pair it with the new device according to the steps mentioned below. SPK-BT202 cannot be connected with 2 devices at the same time*

1. Turn the unit on using the sliding power switch on the rear of the unit.
2. Press and hold the power button until the RED colour back-light indicator is shown. The back-light will then turn green, with two alternating flashes of blue. This indicates that the unit is now on, and is in now in normal Bluetooth operation mode.
3. Press the Bluetooth button to enter "pairing mode". This is indicated by blue and red

alternating flashing back-lights

### Mobile Phone (HSP – Head Set Profile)

*Note 1: Please ensure your Bluetooth device supports the HSP Bluetooth profile before configuring.*

*Note 2: Pairing procedures can vary slightly between Bluetooth devices. Please refer to your mobile phone manual for further information where required.*

1. Open the Bluetooth function of your mobile phone and start the “search” for Bluetooth devices service.
2. Once the SPK-BT202 is located, it will appear on your device list. Then, select the device.
3. Depending on your settings, a password may be required to pair with the SPK-BT202. In this case use the code “**0000**” (four zeros).
4. Once completed successfully, you are now able to connect to the SPK-BT202 using the “connect” option.
5. Once connected successfully, the back-light on the SPK-BT202 will then flash blue to confirm.

### iPad or iPhone

1. Turn the Bluetooth function on via the Settings > General > Bluetooth menu.
2. Swipe the On/OFF switch to ON. The message “Now Discoverable” will appear
3. The Headset should the soon be identified by your iPhone/iPad.
4. Select it to complete the pairing. The device is now ready for use.

### PC (or Notebook)

*Note: Before installing this product, please make sure your PC or device supports Bluetooth, that the Bluetooth feature is enabled or that the Bluetooth dongle has been installed correctly and with current firmware updates*

1. Activate Bluetooth connectivity on your PC and begin the **SEARCH NEW DEVICE** function.
2. After a short scanning period, your PC or Device will indicate that your SPK-BT202 speaker has been discovered and is ready for connection/pairing
3. If you are prompted to enter a pin-code, use the code **0000 (four zero's)**
4. The connection should then be complete and the speaker will be ready for use

*Note 1: Manual connection may be required, for example right clicking on the speaker icon once*

*paired and then selecting "connect".*

*Note 2: If the above pairing process has failed, please ensure your Bluetooth receiver or software has been installed correctly, and then repeat the above steps.*

### Mac OS X 10 or above

1. Choose Setup Bluetooth Device from the Bluetooth status menu in the menu bar
2. Follow the onscreen instructions to pair with the speaker.

*Note: If the Bluetooth status menu is not available, open Bluetooth Preference and select the "Show Bluetooth status in the menu bar" checkbox.*

3. As part of the pairing process, you may need to enter a passkey "0000" (Four zeros)
4. Open System Preferences and click Sound
5. Click Output and select the Bluetooth speaker
6. Click Input and select your speaker. Adjust the Input and Output volume

*Note: Some applications, including iChat AV, allow you to select the audio device from within the application (independently of the default audio input and output selected on the Sound pane of System Preferences). To use a Bluetooth speaker with iChat AV, select the Bluetooth speaker for audio input and output on the Video pane of iChat preferences.*

### Re-Connecting to a Bluetooth device

Each time the SPK-BT202 is switched on, it will attempt to connect to the last device it was paired with automatically. (The source device must be turned on)

*Note: In some cases, the speaker may need to be manually selected from your operating system sound or hardware output list*

### HFP device exception

When the SPK-BT202 is in standby mode, it will not be able to connect to any HFP device. To "wake" the speaker and re-connect to the previously used HSP device, press the **POWER BUTTON** twice to re-connect automatically.

### RECEIVING CALLS WITH SPK-BT202

Function	Status of SPK-BT202	Operation
Volume up	Conversation mode	Short press <b>+</b> key
Volume down	Conversation mode	Short press <b>-</b> key
Answer calling	Ringing	Short press <b>PLAY BUTTON</b>

*Note 1: During audio playback, the SPK-BT202 will alert you of any incoming phone calls*

*Note 2: Not all the mobile phones support all the functions listed above. Please refer to the instruction of your mobile phone.*

*Note 3: Some functions and indication tones may vary with different mobile phones.*

*Note 4: Some mobile phones may require the user to manually transfer the call through to HSP device. In this case please refer to your device user guide.*

### MUSIC PLAYBACK CONTROLS

Function	Status of speaker	Operation
Pause	Audio playback	Short press <b>PLAY BUTTON</b>
Play	Pause playback	Short press <b>PLAY BUTTON</b> again
Volume up	Audio playback	Short press <b>+</b> key
Volume down	Audio playback	Short press <b>-</b> key

*Note1: Some mobile phones may require the user to manually transfer audio playback through to the SPK-BT202. In this case please refer to your device user guide.*

*Note 2: An audible tone will be heard when the volume has been adjusted to either full min or full max volumes.*

*Note 3: The required Bluetooth profile for controlling audio playback from the source device is called AVRCP. Please check with your source device to check compatibility.*

### LED AND TONE INDICATIONS:

LED indicator	Status of the speaker
Power LED ( inside speaker mesh) in Red	Battery charging
Power LED ( inside speaker mesh) in flash Red	Battery low
Power LED ( inside speaker mesh) is off	Battery has been charged
Main Power Button LED off	Power off
Main Power Button LED flashing in Blue/Red	In Paring mode
Main Power Button LED flashing in Blue	Power on with Bluetooth Mode
Main Power Button LED in Blue	Power on with Aux in mode

**TROUBLE SHOOTING / Q & A**

<b>Is “discovering” a new device and “pairing” a new device two different things?</b>	Yes. Think of it like tuning stations into your TV. The same applies to your headset. First you must scan for available services, and then choose which service to connect to.
<b>I have paired SPK-BT202 with another Bluetooth device (eg. an iPhone) before. I am now trying to pair with another device (eg. iPad) and it doesn’t work.</b>	SPK-BT202 cannot “pair” to two devices at the same time. You must first turn off / un-pair /select “forget the first device in order to pair to second BT device
<b>Sometimes my SPK-BT202 will not auto-connect to my iPhone</b>	Please turn the source device on first, before you turn on your SPK-BT202. The SPK-BT202 will auto-search for the previously connected device upon start up.
<b>When running on the Mac, I need to go through my speaker settings each time I restart my system</b>	As above, turn the source device on first, before turning on the SPK-BT202.

For further product information and instruction please visit our product web page at [www.laserco.net](http://www.laserco.net) or email [support@laserco.com.au](mailto:support@laserco.com.au)

Please note: As continual improvements are made to this product, slight operational differences may occur. For the most up-to-date user manual, please visit our web site.



### Warranty Against Defects

Laser Corporation Pty Ltd ("Laser") warrants your new product to be free from defects in materials and workmanship for 12 months, from the date of purchase, provided that the product is used in accordance with accompanying recommendations or instructions where provided. The benefit of this warranty is in addition to your rights under the Australian Consumer Law and to other rights and remedies of the consumer under a law in relation to the goods or services to which the warranty relates.

Through a network of retailers and resellers, Laser will provide you with your choice of a refund, repair or exchange (where possible) for this product if it becomes defective within the warranty period. This warranty will no longer apply where the defect is a result of alteration, accident, misuse, abuse, normal wear and tear, neglect or improper storage.

Please retain your receipt as proof of purchase

#### How to make a product warranty claim:

Step 1: Find your receipt which proves the date of purchase. Where the date of purchase cannot be verified, your place of purchase or Laser will make an assessment based on the date of manufacture, the condition of the Laser Product and the type of defect.

Step 2a): Contact your place of purchase. They will assess the nature of the fault and refund or replace the product as per their store refund or warranty policy.

Step 2b): If your place of purchase cannot be contacted, then you can contact Laser . Customer Service with details of your defective Laser Product: Phone: (02) 9870 3355; or Email: [service@laserco.com.au](mailto:service@laserco.com.au) or online [www.laserco.net/support/warranty](http://www.laserco.net/support/warranty) (click on "Consumers (End Users)"). Our business address is at 1/6-8 Byfield Street, North Ryde, NSW 2113

Step 3: Laser . will issue you with a Return Authorisation (RA) number within 48 hours. When requested, send us the defective Product and a copy of your receipt. Laser will cover the cost of the return delivery.

Step 4: Wait for us to contact you. Once we have received your defective Laser Product for inspection, we will inform you of our assessment of your claim within 7 days. When we contact you, we will firstly let you know whether you have a valid claim under this Warranty, and if so, we will inform you whether your defective Laser Product will be replaced or repaired, together with the number of days you can expect to wait to receive your replaced or repaired Laser Product.

Our goods come with guarantees that cannot be excluded under the Australian Consumer Law. You are entitled to a replacement or refund for a major failure and compensation for any other reasonably foreseeable loss or damage. You are also entitled to have the goods repaired or replaced if the goods fail to be of acceptable quality and the failure does not amount to a major failure.

