

ComIT

Solutions

LockIT

User Manual

Version 1.0

Created by ComIT Solutions Pty Ltd

Nov 2005

Contents

OVERVIEW	4
QUICK START	5
ARCHITECTURE	6
SYSTEM REQUIREMENTS.....	7
<i>PC.....</i>	7
<i>Palm.....</i>	7
INSTALLATION	8
<i>Requirements</i>	8
<i>Extracting the Setup Files</i>	8
PDA INSTALL	8
PC INSTALL	8
CONDUIT CONFIGURATION	9
PDA APPLICATION.....	10
STARTING LOCKIT.....	10
<i>TIP</i>	10
<i>Logon.....</i>	10
<i>TIP</i>	10
<i>Registration</i>	10
<i>Registration Form</i>	11
<i>Trial</i>	11
MAIN FORM	12
<i>Overview.....</i>	12
<i>Main Form.....</i>	12
<i>Menus</i>	13
EDIT FORM	14
<i>Overview.....</i>	14
<i>Selecting Labels.....</i>	14
<i>Manual Labels.....</i>	14
<i>Entering Details.....</i>	14
<i>Menus</i>	15
EDIT LABELS	16
<i>Edit Existing</i>	16
<i>Deleting a List Item</i>	16
<i>New Item.....</i>	16
CHANGE KEY (PDA ONLY).....	17
<i>Warning.....</i>	17
<i>Changing the Key.....</i>	17
PC APPLICATION	18
STARTING LOCKIT.....	18
<i>Logon.....</i>	18
MAIN FORM	19
<i>Toolbar</i>	20
<i>Menus</i>	20
<i>Warning.....</i>	20
EDIT LABELS	21
<i>Edit Existing</i>	21
<i>Deleting a List Item</i>	21
<i>New Item.....</i>	21
EDIT CATEGORIES.....	21
REGISTRATION.....	22
SUPPORT	23
FAQ	24
<i>Invalid Serial key. Key not saved.....</i>	24
<i>Why does Hotsync Consistently Fail?</i>	24

MS DotNet Framework missing 24
Could not find file..... 24
Invalid Value 24
Duplicate Value..... 24
Syncing to more than one PC..... 24
Duplicate Record error when syncing..... 24
LICENCE AGREEMENT 25

OVERVIEW

LockIT has been specifically designed to record and encrypt sensitive information so that you can be assured your data is secure, even if your PDA is lost or stolen. It is ideal for recording bank details, pin numbers, passwords etc. which can be grouped into user defined categories. You no longer need to remember dozens of passwords, pin numbers or account details, just remember one simple phrase and you have access to all your information. Beware if you forget this phrase then your information is lost. Not even we (the developers) can recover your information.

LockIT also provides full two way synchronisation to a desktop PC application (Windows only) enabling easy maintenance and backup of your data.

QUICK START

So you have installed programs before and just want to get running. If you are using both the PC and PDA applications then perform the following. Otherwise simply install the LockIT.prc file to your PDA main memory.

Installation of PC and PDA applications

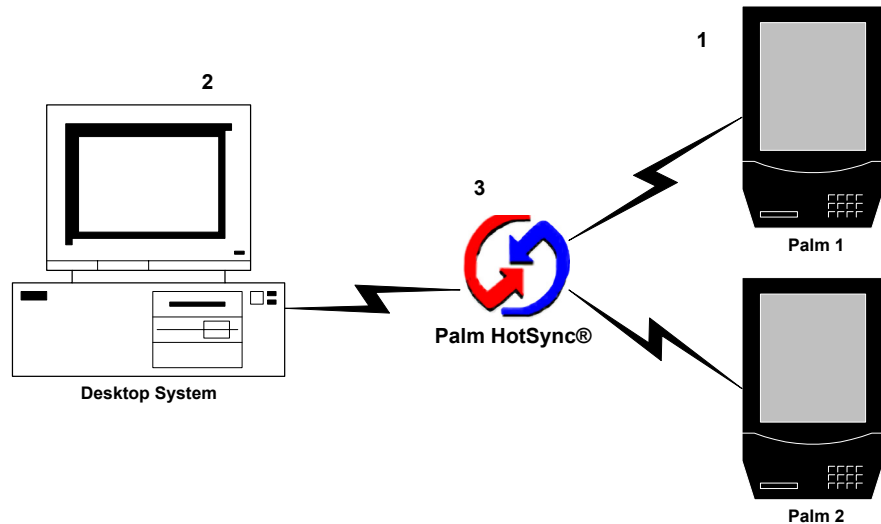
- 1. Extract the zip file and run Setup.exe**
- 2. Follow the prompts**
- 3. Install LockIT.prc to your PDA main memory**
- 4. Open LockIT on your PDA**
- 5. Perform another sync**

LockIT should now be installed on both your PC and PDA. If you have any problems please refer to the detailed [Installation](#) instructions.

ARCHITECTURE

The LockIT application has three components as shown below.

1. Palm application
2. PC database
3. Synchronisation conduit

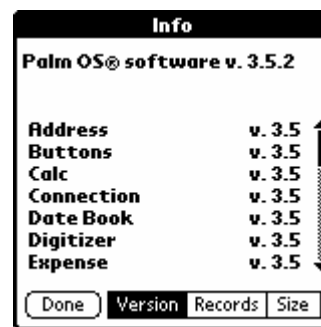


LockIT entries can be made on either the Palm, PC or both. When the Palm is synchronised using Hotsync manager the new or changed entries will be transferred between each system.

LockIT can be used by multiple users to sync back to the same PC. Each user will have a separate PC database and security logon to access only their information.

SYSTEM REQUIREMENTS

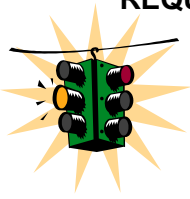
- PC** LockIT requires Windows NT, 2000, 2003, XP or above. In addition Microsoft DotNet framework 1.1 must be installed to run the PC application and synchronisation (already installed on most XP machines). If you do not have MS DotNet framework installed you will be prompted to download it and install it from either the [MS Windows Update](#) or [here](#). Hotsync manager must also be installed and configured.
- PALM** LockIT is compatible with all devices running Palm OS 3.0 and above. This includes the Palm III, Palm IIIx, Palm V, Palm Vx, Palm VII, Tungsten, IBM WorkPad, Handspring, Clie, Trio, Palmone and many more. To determine your OS version click the Info menu item from the Home page on your Palm. When the info page is shown click the Version option. Your OS version will be displayed at the top of the screen.



LockIT is not compatible with the original Pilot 1000 or Pilot 5000. If you have one of these then please donate it to your local science history museum and buy a new Palm PDA.

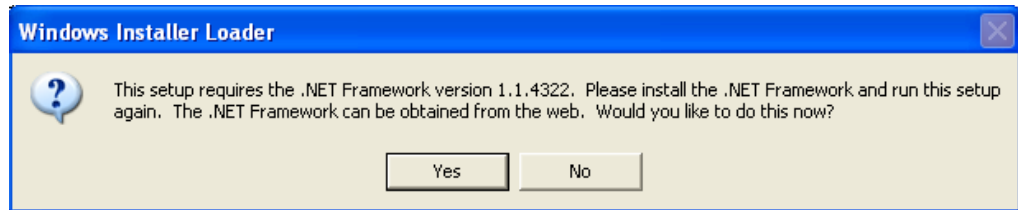
If you are unsure of your version then simply install LockIT and give it a try. If your PDA does not support the required version an error will be displayed when you launch LockIT.

INSTALLATION



REQUIREMENTS Prior to installing LockIT the PC must have the following software installed:

1. Palm HotSync® manager with a connection to your PDA.
2. If the PC application is required then MS DotNet 1.1 must be installed. If you do not have this you will be prompted with the message below during the install to download it from [here](#).



Note: The LockIT PDA application can be installed without the PC application and Synchronisation conduit. In such cases only HotSync® is required for the install.

EXTRACTING THE SETUP FILES

This step is required for all installations.

1. Download the LockITSetupFull.zip file to a temporary directory.
2. Unzip LockITSetupFull.zip to a temporary directory
3. In Explorer locate the directory where you extracted the files.

PDA Install

This step must be repeated for each PDA that requires LockIT to be installed.

1. Using Explorer locate and double click on the LockIT.prc file.
2. You may be prompted to select the user of the palm to install to, if so select the appropriate user and click 'OK'.
3. When the Install Tool window appears ensure you select the main PDA memory and click 'Done'.
4. Perform a Hotsync to install LockIT to your PDA.
5. Open LockIT on your PDA
6. Perform another Hotsync

PC Install

This step is only required if you wish to use the PC application to synchronise with your PDA. **Note:** You must be logged on with administrative privileges to install the PC software

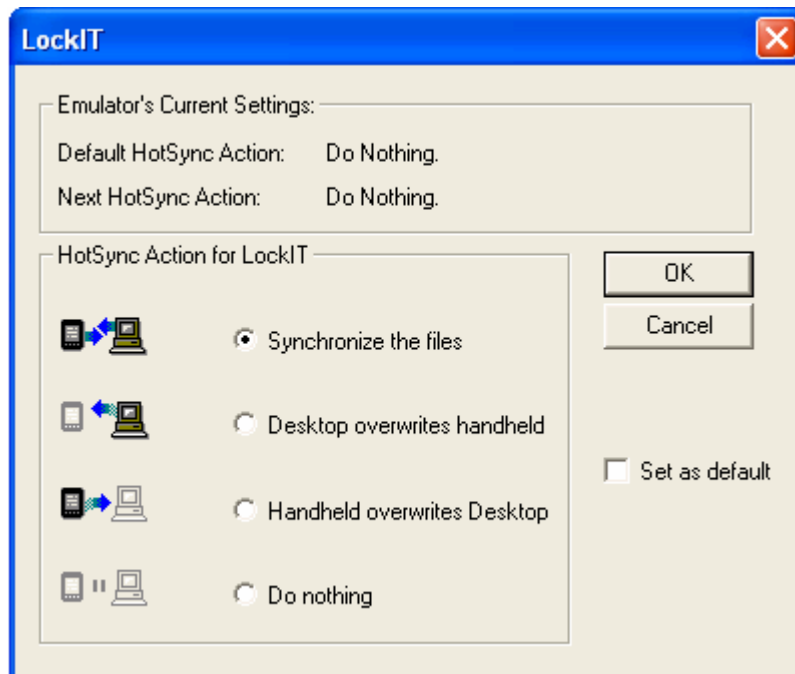
1. Locate the Setup.exe file and run it.
2. The program will prompt for an installation directory. We recommend using the default.
3. Follow the prompts to install the application

The PC application is now installed. You may start the application by selecting the Start/Programs/LockIT/LockIT icon from your start menu.

Note: You must install the PDA application and perform a Hotsync before using the PC application, otherwise you will receive a data file not found error. See [Starting LockIT](#) section for details

Conduit Configuration

The LockIT Conduit is a small application which interfaces into Hotsync to synchronise the LockIT records during the Hotsync process. This application is installed when you run Setup.exe. After installing you will notice a LockIT entry under the Hotsync Custom menu option. You can select this entry and click Change to show the Hotsync options for LockIT.



Click OK to save your changes.

PDA APPLICATION

Starting LockIT

Once LockIT is installed on your PDA a new Icon will appear as shown below.



LockIT

Click on this icon to start LockIT.



TIP *If after synchronising your Palm you cannot see the icon, try selecting the "All" category from the top right hand side of the screen. If the icon is still not displayed then the application has not been installed correctly. Please repeat the Palm Install procedure again.*

LOGON You need to enter a secret paraphrase key to decrypt the information stored in LockIT. If this is the first time you have launched the application then enter a new phrase which will be used to encrypt entered information.



This key is used to encrypt your records, do not forget it. If lost it can not be recovered! The longer the key, the more secure your data. For added security do not use names, dictionary words or other terms which may be easily guessed. It is recommended to combine numbers, letters and case. e.g. SaF321



TIP *Click Hide Text if you do not want to show the key as you are entering it. Note you cannot use the virtual keyboard if you select Hide Text.*

REGISTRATION LockIT is a licensed application. To purchase please go to <http://www.handango.com/> and type in ComIT into the search field. Select the LockIT link and click **Add to Cart**. Once you have paid the small licence fee you will receive your Serial Key in your order confirmation email. **When registering you will be required to quote your Hotsync User ID.** This (Palm OS Emulator in the case below) will be used to create your serial key. If you do not supply this code then we cannot create your serial key. **Note: the User ID is case sensitive.**

REGISTRATION FORM

A registration dialog box with a purple title bar containing the word "Registration" and an information icon. The text inside reads: "To obtain your serial key please quote the following User ID when placing your order". Below this is a label "User ID" followed by a text field containing "Palm OS Emulator". Underneath is a label "Serial Key" followed by an empty text field. At the bottom, it says "Trial: 12 days or 10 records" and has two buttons: "Register" and "Register Later".

Registration

To obtain your serial key please quote the following User ID when placing your order

User ID Palm OS Emulator

Serial Key

Trial: 12 days or 10 records

Register Register Later

TRIAL You may use the LockIT application for a trial period to assess its performance. Whilst in trial mode the application is fully functional though the number of entries and days has been limited. Once this limit is reached no more records can be entered or edited. To start the trial click on the *Register Later*. Whilst in trial mode the Register form will appear each time you start the application.

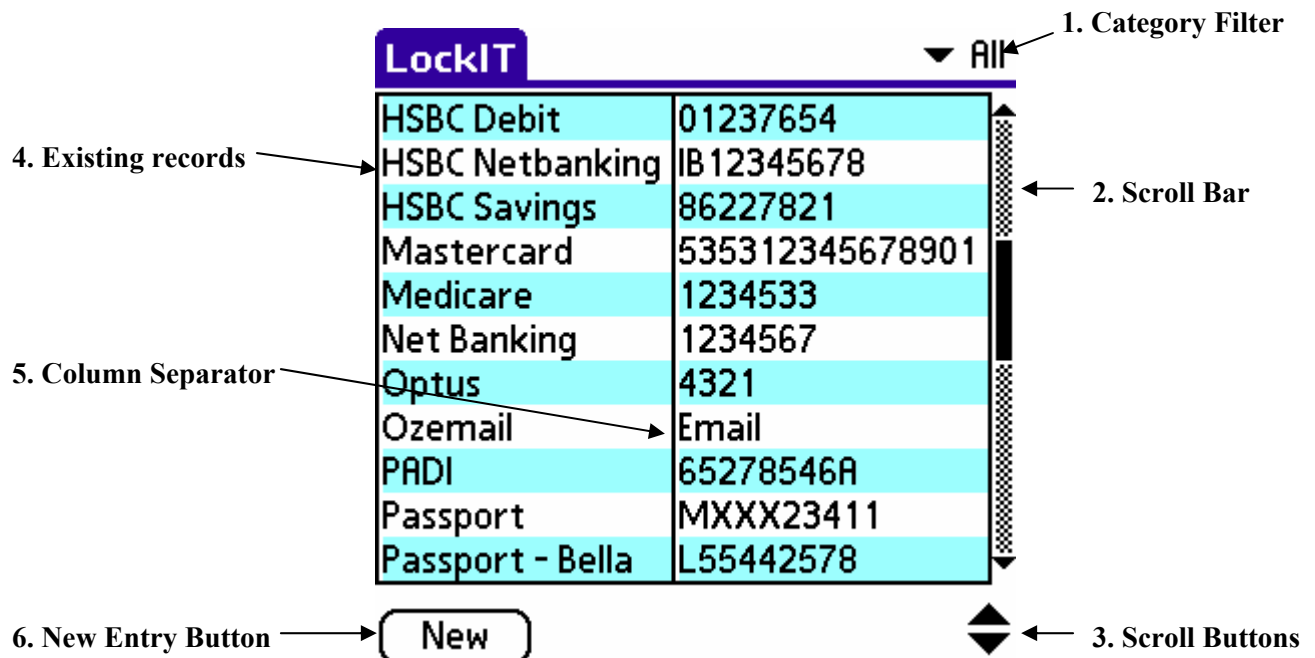
Main Form

Please follow the [Installation](#) instructions if you have not already done so before continuing with this section.

OVERVIEW LockIT is a secure means of recording sensitive information. Each piece of information is stored in a record, each record consists of 10 user defined labels and 10 detail fields. Records can be associated to a category in order to group like information, e.g., Financial, Internet, Personal etc.

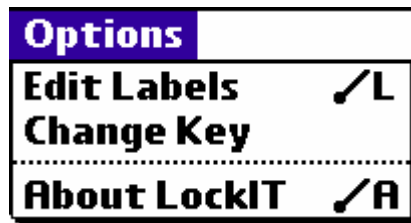
Labels are restricted to 30 characters and details to 250. There are no restrictions on the number of records you can create which is only limited by your available memory.

MAIN FORM The main form is the first form to be displayed after logging on to the LockIT PDA application. This is a simple list of the records you have already entered as shown below. From this list you can scroll through the records and select a record to view/edit.



1. The category filter is used to display only those records of the specified category. Select All to display all records
2. Use the scroll bar (when visible) to scroll down through the list
3. Use the scroll buttons to scroll through the list one record at a time
4. Records matching the category filter are displayed in the list sorted alphabetically. The first two detail fields of each record are displayed. Select a list item to edit the record. Refer to Edit Form for details
5. The column separator can be dragged left or right to change the column widths
6. The **New** button creates a new blank LockIT record. Refer to Edit Form for details

MENUS Within LockIT there are number of menus that can be accessed by clicking on the menu icon in the bottom left hand corner. These menus provide access to other forms and functions within the application.

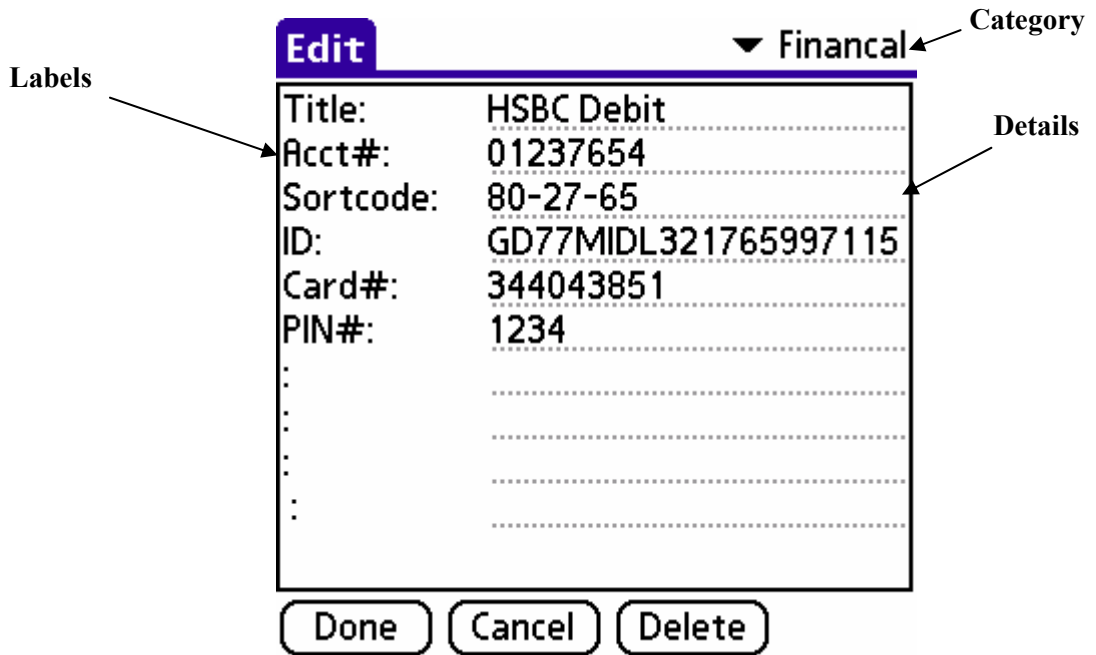


The menu shown above is from the main form. The function of each menu item is described in the following sections.

Edit Form

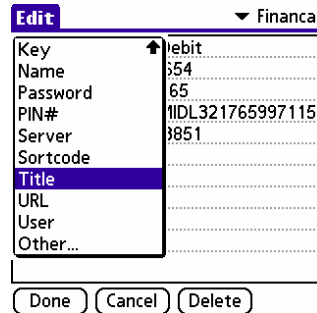
OVERVIEW

The Edit form is used to create or edit LockIT records and is accessed from the Main form by either selecting an existing record or clicking on New. The form consists of two columns of ten rows where information can be stored, see below.



SELECTING LABELS

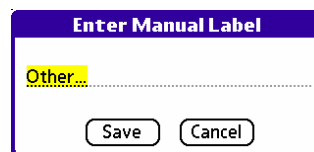
Labels define each piece of information to be stored in the current record. The use of labels is optional. Typically the first Label would relate to the name or identifier of the record, ie Title in the example above. You can select a predefined label by clicking on the Label field to display the selection list.



Use the up and down arrows to scroll through the list if necessary.

MANUAL LABELS

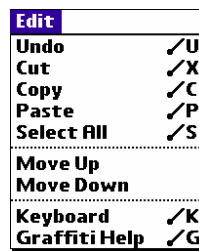
If you do not wish to use a predefined label you can create a custom label by selecting **Other...**. You will then be prompted to enter the text for the custom label.



ENTERING DETAILS

Detail fields contain the information you wish to be kept secure, ie your Account No, Pin No etc. These fields are free entry and can store up to 250 characters of text each. Typically the first and second fields would be used to identify the record as these fields are displayed in the Main form list, ie. Name, Number etc.

MENUS The Edit form has one menu as shown below. The basic functionality of Undo, Cut, Copy, Paste etc. relate to standard text operations performed on the Details field only.



Move Up and **Move Down** are used to reorder the fields in a record. Simply select the Detail field of the row you wish to move and click Move Up or Move Down accordingly.

Edit Labels

Labels are used within records to identify individual pieces of information, e.g., Account No, Pin No etc. To improve consistency a standard list of Labels can be maintained for use in all records. Once created the labels become available as a drop down list within the Edit form. To edit the labels select **Edit Labels** from the Main form Menu.

The contents of the list will be displayed similar to below:



Edit Label List

- Acct#
- Biller#
- Card#
- Company
- Exp
- ID
- Key
- Name
- Password
- PIN#
- Server

OK New Edit Delete

EDIT EXISTING To edit an existing entry first select the entry in the list and click **Edit**. The form below will be displayed allowing you to edit the selected entry



Edit Label List

Edit Record

Acct#

Save Cancel

Once you have completed your changes click Save, or Cancel. If your edited value is the same as an existing list value then a **Record Already Exists** error will be displayed and your changes discarded

DELETING A LIST ITEM To delete an existing list item simply select the required item and click **Delete**. The item will be deleted immediately.

NEW ITEM To create a new item in a list, simply click **New**. The form below will be displayed where you can enter the new list item.



Edit Label List

Enter New Record:

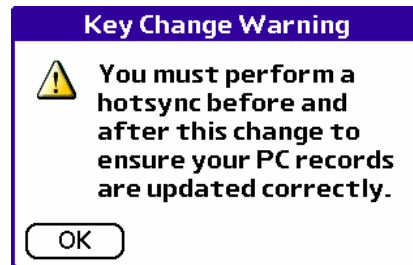
Save Cancel

To confirm the new list item click **Save**, otherwise **Cancel** to discard.

Change Key (PDA only)

The Key is the security phrase you use to logon to LockIT. This phrase is also used to encrypt all records before saving. Thus if you change the key, all records will be re-encoded and saved with the new key. To avoid synchronisation issues this function can only be performed on the PDA, after which all records on the PC will be updated.

After selecting the **Key Change** menu item a warning will displayed as shown below



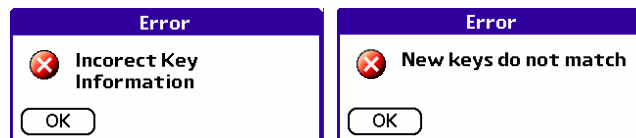
WARNING If you are using the PC desktop application then you **MUST** perform a Hotsync before and after changing the Key. Otherwise any records changed on your PC will not be re-encrypted with the new Key and will become corrupt. Click **OK** and then **Cancel** to exit the **Key Change** function and perform the necessary Hotsync.

CHANGING THE KEY After performing a Hotsync (if necessary) select **Key Change** again and click **OK** to the warning. The form below will be displayed.

 A form with a white background and a purple border. It contains three text input fields: "Enter Existing Key Phrase", "Enter New Key Phrase", and "Re-enter New Key Phrase". Each field has a dotted line below it. At the bottom of the form are two buttons: "Done" and "Cancel".

Use this form to enter your existing **Key** at the top of the screen and the new **Key** in the middle and again at the bottom. Make sure you remember the new **Key**, if lost it can not be recovered!

Click Done to save your changes and update all records. If you receive any of the errors below then your existing key or new key is not valid and no changes have been made.



Remember to perform another Hotsync (if required) to ensure your new encryption key is saved to your PC.

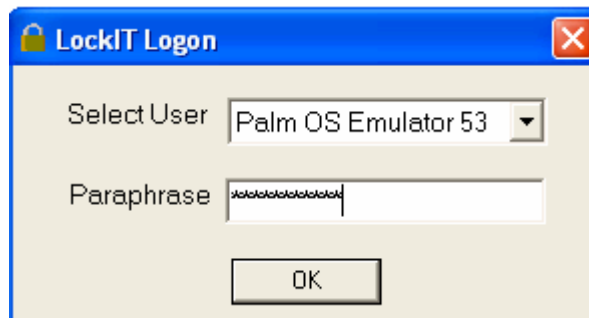
PC APPLICATION

Starting LockIT

Once LockIT is installed on your PC a new Start Menu and desktop icon called LockIT will be created. Use this to start LockIT and display the Logon screen.



LOGON To logon to the PC application select the required PDA user and enter a secret paraphrase key. If you have multiple PDA users on your PC each will have their own paraphrase key.

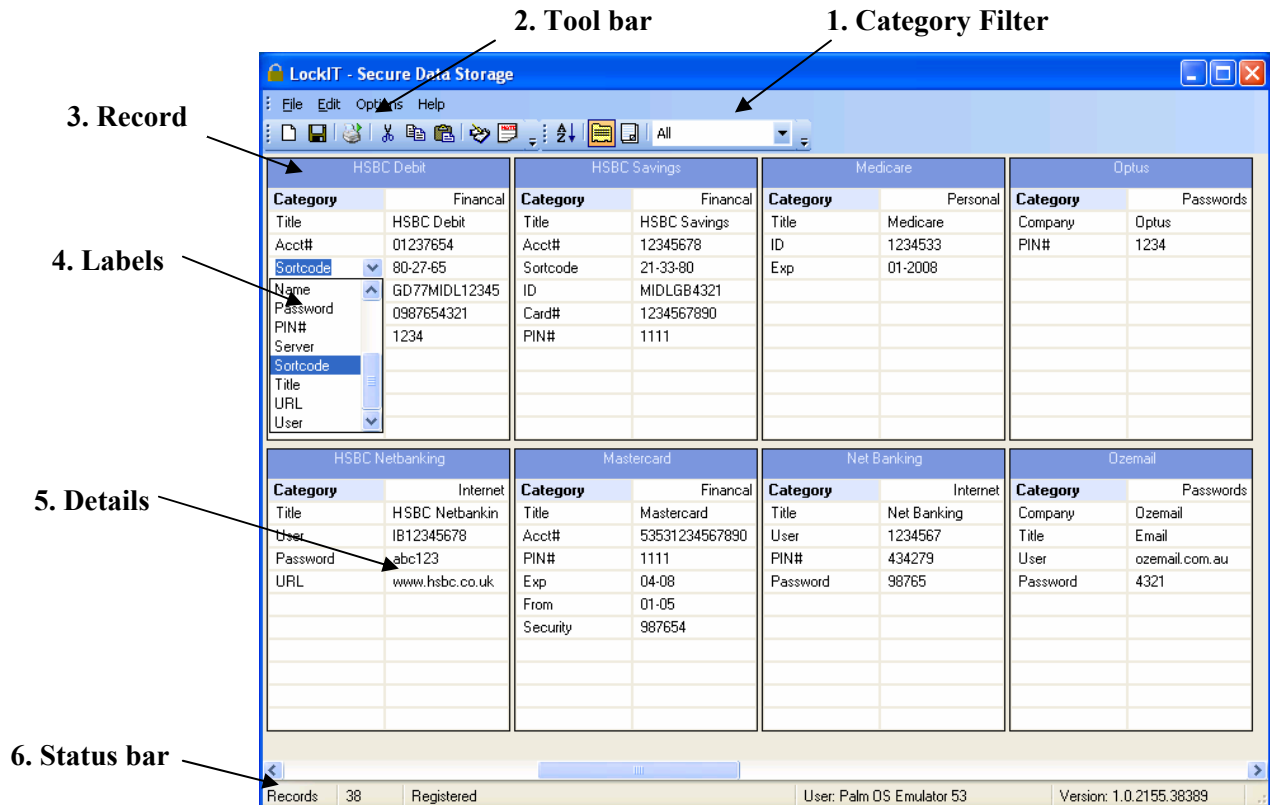


Note you must first install the PDA application and perform a Hotsync before using the PC application. Refer to the [Installation](#) section for details.

Main Form

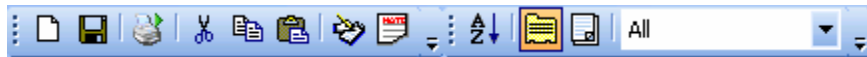
The main form is displayed after logging on to the LockIT PC application. This is a grid containing a scrollable card view of the records you have already entered as shown below.

This form is used to perform most of the actions required to add, edit or delete your LockIT records. There are six main parts of the form as described below.



1. The category filter is used to display only those records of the specified category. Select All to display all records
2. The toolbar contains buttons to perform maintenance and control functions. See [Toolbar](#) section for more details.
3. LockIT records are listed down and across the main form. The record title is based on the first detail field of each record. Records can be resized by dragging the column and record separators.
4. Labels can be selected from a predefined list or manually entered. To edit a label click on the field and type the required value or select from the predefined list using the dropdown arrow.
5. Details relating to the record are entered by clicking on the required field
6. The status bar displays information about the number of records, registration status, username and application version

TOOLBAR The toolbar contains the main functions required to maintain your data. The operation of each is listed in order below.

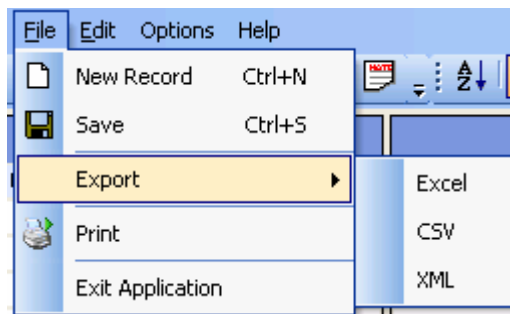


1. Create a New record
2. Save all records
3. Print all records.
4. Cut the selected text. Only relative to labels and details
5. Copy the selected text. Only relative to labels and details
6. Paste text into the selected label or detail cell
7. Edit the list of Labels (Edit Labels)
8. Edit the list of categories (Edit Categories)
9. Resort the records
10. Display the records in Card View format
11. Display the records in List View format
12. Category filter used to filter displayed records

Note: When printing or exporting to Excel the display will automatically change to List view. This is by design as Card View is not supported for printing or exporting.

MENUS The menu above the toolbar provides an alternative method for accessing the same functions contained in the toolbar.

In addition the File menu provides links to export all records in Excel, CSV or XML format.



WARNING If you export data it is no longer encrypted or secure. Your exported data can be read by anyone who has access to the exported file.

Edit Labels

The list of Labels can be edited on the PC by clicking the **Edit Labels** button on the toolbar. This displays the form below:

EDIT EXISTING To edit an existing list item select the required field and overtype with the new Label value. When finished either select a new record or close the form.

If your edited value is the same as an existing list value then a **Duplicate Label Value** error will be displayed and your changes discarded

DELETING A LIST ITEM To delete an existing list item simply select the required Label using the record selector (the right pointing arrow above) and press the **Delete** key on your keyboard. A delete confirmation will be displayed which must be accepted before the record is deleted.

NEW ITEM To create a new Label simply click in the last row marked by the * and type the required value. When finished either select a different record or close the form.

Edit Categories

The predefined list of Categories can be edited on the PC by clicking the **Edit Categories** button on the toolbar. The operation of this form is identical to the [Edit Labels](#) form. Please refer to this section for details.

Registration

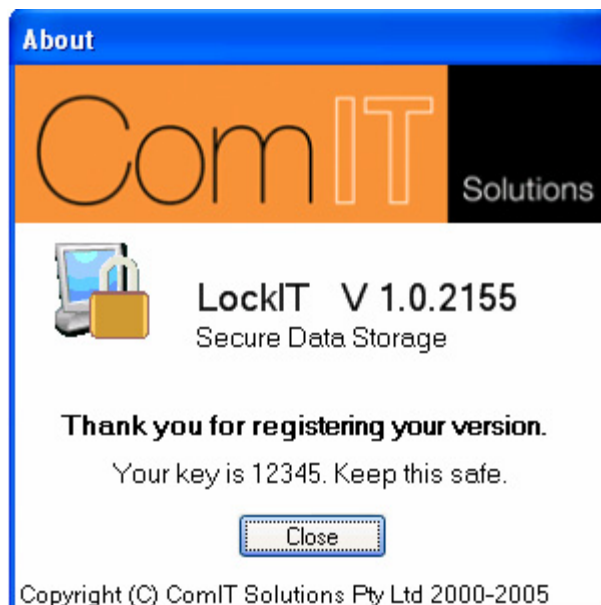
LockIT is a licensed application. To purchase LockIT please follow the instructions in the PDA [Registration](#) section.

Once you have received your registration key you need to enter it into the PC application to unlock the record limit. Note each registration key is specific to each PDA user. If you have two PDA's syncing to the same PC then you need to purchase two registration keys.

Use the Help/About menu item to display the form below.



Type your registration key in the **Enter Key** box and click register. If the key is valid the form will be updated as shown below.



Otherwise an **Invalid Key** error will be displayed. Please check your registration key and retry.

SUPPORT

LockIT has been thoroughly tested on multiple Palm devices. If in the unlikely event you experience a problem please first ensure you have followed the installation and setup instructions and reviewed the FAQ section and material on our website <http://www.comit.com.au/support.htm>

If the problem persists please email all bugs and support related enquires to support@comit.com.au

and include LockIT Support in the email header.

To assist us we will require the following information:

1. Registration No or serial key, purchase date and email address
2. Palm OS version
3. Your PC Windows OS version
4. Your Hotsync version
5. A copy of the Hotsync Log
6. A detailed description of the problem. If the issue is bug related then provide details of the operations performed to reproduce the problem.

FAQ

- INVALID SERIAL KEY.
KEY NOT SAVED.** The serial key (registration key) is not valid for the current PDA user. Check the key and try entering it again. If you continue to have problems then check that you have supplied the correct Registration name (case sensitive) and contact the site where you purchased LockIT. If your registration name contains non standard ASCII characters then you may need to contact us directly to obtain a valid key.
- WHY DOES HOTSYNC
CONSISTENTLY FAIL?**
1. Have you installed the Conduit? It should be installed when you run Setup.exe. To check right click on your Hotsync icon and select Custom. If installed you should see a LockIT entry. If it is not there then run Reinstall Conduit from the LockIT Start menu.
 2. Is the Conduit action configured correctly? From the Hotsync custom menu select LockIT and click change. Ensure the action is set appropriately for the sync method you require.
- MS DOTNET
FRAMEWORK MISSING** This error received when you run Setup.exe during the install or the LockIT application after installing. This is due to the MS Dot Net Framework 1.1 missing from the PC. The framework must be installed for the PC application to install and function. Refer to the [Microsoft web site](#) for details on installing the framework.
- COULD NOT FIND FILE** This error is produced when you try to open the PC application before you have installed and setup the PDA application and completed a second sync. Refer to the install instructions for the correct installation sequence.
- INVALID VALUE** This error occurs when the value entered is either blank or a space. Labels and categories must be non blank and unique values.
- DUPLICATE VALUE** This error occurs when the value entered already exists in the Category or Label list. Labels and categories must be non blank and unique values.
- SYNCING TO MORE
THAN ONE PC** LockIT is not designed to sync to more than one PC since it supports two way data changes. The conduit is designed to try and ensure all data is maintained when syncing to different PC's or profiles, however this functionality is not supported. The only way to ensure the data is copied to multiple PC's correctly is to set both PCs to Handheld Overwrites Desktop sync for LockIT. This will overwrite the data on each sync to each PC.
- DUPLICATE RECORD
ERROR WHEN
SYNCING** A duplicate record error in the Hotsync log file means that a record which was created on the PDA already exists on the PC, or that the same record has been modified on both the PC and PDA between syncs.
- To resolve this issue determine which record should be deleted on either the PDA or PC, delete it and perform another Hotsync.

LICENCE AGREEMENT

ComIT Solutions Pty Ltd. LICENSE AGREEMENT

This is a legal agreement between you and ComIT Solutions Pty Ltd. covering your use of LockIT. Be sure to read the following agreement before using the software. IF YOU DO NOT AGREE TO THE TERMS OF THIS AGREEMENT, DO NOT USE THE SOFTWARE AND DESTROY ALL COPIES OF IT.

This ComIT End-User License Agreement ("EULA") is a legal agreement between you (either an individual or a single entity) and ComIT Solutions Pty Ltd. By installing, copying, or otherwise using LockIT ("the Software") on any computer or device, you agree to be bound by the terms of this EULA. If you do not agree to the terms of this EULA, you are not authorized to use the Software.

GRANT

ComIT Solutions Pty Ltd. grants you a non-exclusive license to use the Software.

You may:

- * use the Software on any single computer or electronic device;
- * use the Software on a second device so long as only one copy is used at a time;
- * copy the Software for archival purposes, provided any copy must contain all of the original Software's proprietary notices and this license agreement; or

You may not:

- * permit other individuals to use the Software except under the terms listed above;
- * permit concurrent use of the Software;
- * modify, translate, reverse engineer, decompile, disassemble or create derivative works based on the Software;
- * copy the Software other than as specified above;
- * rent, lease, grant a security interest in, or otherwise transfer rights to the Software; or
- * remove any proprietary notices or labels on the Software.

WARRANTY

ComIT Solutions Pty Ltd. warrants that for a period of sixty (60) days from the date of acquisition, the Software, if operated as directed, will substantially achieve the functionality described in the Documentation. ComIT Solutions Pty Ltd. does not warrant, however, that your use of the Software will be uninterrupted or that the operation of the Software will be error-free or secure. ComIT Solutions Pty Ltd. also warrants that the media containing the Software, if provided by ComIT Solutions Pty Ltd., is free from defects in material and workmanship and will so remain for sixty (60) days from the date you acquired the Software. ComIT Solutions Pty Ltd's sole liability for any breach of this warranty shall be, in ComIT Solutions Pty Ltd's sole discretion: (i) to replace your defective media; or (ii) to advise you how to achieve substantially the same functionality with the Software as described in the Documentation through a procedure different from that set forth in the Documentation; or (iii) if the above remedies are impracticable, to refund the license fee you paid for the Software. Repaired, corrected, or replaced Software and Documentation shall be covered by this limited warranty for the period remaining under the warranty that covered the original Software, or if

longer, for thirty (30) days after the date (a) of shipment to you of the repaired or replaced Software, or (b) ComIT Solutions advised you how to operate the Software so as to achieve the functionality described in the Documentation. Only if you inform ComIT Solutions Pty Ltd. of your problem with the Software during the applicable warranty period and provide evidence of the date you purchased a license to the Software will ComIT Solutions Pty Ltd. be obligated to honor this warranty. ComIT Solutions Pty Ltd. will use reasonable commercial efforts to repair, replace, advise or, for individual consumers, refund pursuant to the foregoing warranty within 30 days of being so notified.

THIS IS A LIMITED WARRANTY AND IT IS THE ONLY WARRANTY MADE BY ComIT Solutions Pty Ltd. ComIT Solutions Pty Ltd. MAKES NO OTHER EXPRESS WARRANTY AND NO WARRANTY OF NONINFRINGEMENT OF THIRD PARTIES' RIGHTS. THE DURATION OF IMPLIED WARRANTIES, INCLUDING WITHOUT LIMITATION, WARRANTIES OF MERCHANTABILITY AND OF FITNESS FOR A PARTICULAR PURPOSE, IS LIMITED TO THE ABOVE LIMITED WARRANTY PERIOD; SOME JURISDICTIONS DO NOT ALLOW LIMITATIONS ON HOW LONG AN IMPLIED WARRANTY LASTS, SO LIMITATIONS MAY NOT APPLY TO YOU. NO ComIT SOFTWARE DEALER, AGENT, OR EMPLOYEE IS AUTHORIZED TO MAKE ANY MODIFICATIONS, EXTENSIONS, OR ADDITIONS TO THIS WARRANTY.

If any modifications are made to the Software by you during the warranty period; if the media is subjected to accident, abuse, or improper use; or if you violate the terms of this Agreement, then this warranty shall immediately be terminated. This warranty shall not apply if the Software is used on or in conjunction with hardware or software other than the unmodified version of hardware and software with which the software was designed to be used as described in the Documentation. THIS WARRANTY GIVES YOU SPECIFIC LEGAL RIGHTS, AND YOU MAY HAVE OTHER LEGAL RIGHTS THAT VARY BY JURISDICTION.

DISTRIBUTION

Distribution of the Software is not allowed without permission of ComIT Solutions Pty Ltd.

You may not modify, translate, reverse engineer, decompile, disassemble or create derivative works based on the Software. You may not copy the Software other than as specified above. You may not rent, lease, grant a security interest in, or otherwise transfer rights to the Software. You may not remove any proprietary notices or labels on the Software. You must maintain all copyright notices on all copies of the Software.

TITLE.

Title, ownership rights, and intellectual property rights in the Software shall remain in ComIT Solutions Pty Ltd.

TERMINATION.

The license will terminate automatically if you fail to comply with the limitations described herein. On termination, you must destroy all copies of the Software and Documentation.

EXPORT CONTROLS.

None of the Software or underlying information or technology may be downloaded or otherwise exported or reexported (i) into (or to a national or resident of) Cuba, Iraq, Libya, Yugoslavia, North Korea, Iran, Syria or any other country to which the U.S. has embargoed goods; or (ii) to anyone on the U.S. Treasury Department's list of Specially Designated

Nationals or the U.S. Commerce Department's Table of Denial Orders. By downloading or using the Software, you are agreeing to the foregoing and you are representing and warranting that you are not located in, under the control of, or a national or resident of any such country or on any such list.

LIMITATION OF LIABILITY

UNDER NO CIRCUMSTANCES AND UNDER NO LEGAL THEORY, TORT, CONTRACT, OR OTHERWISE, SHALL ComIT Solutions Pty Ltd. OR ITS SUPPLIERS OR RESELLERS BE LIABLE TO YOU OR ANY OTHER PERSON FOR ANY INDIRECT, SPECIAL, INCIDENTAL, OR CONSEQUENTIAL DAMAGES OF ANY CHARACTER INCLUDING, WITHOUT LIMITATION, DAMAGES FOR LOSS OF GOODWILL, WORK STOPPAGE, COMPUTER FAILURE OR MALFUNCTION, OR ANY AND ALL OTHER COMMERCIAL DAMAGES OR LOSSES. IN NO EVENT WILL ComIT Solutions Pty Ltd. BE LIABLE FOR ANY DAMAGES IN EXCESS OF THE AMOUNT ComIT Solutions RECEIVED FROM YOU FOR A LICENSE TO THE SOFTWARE, EVEN IF ComIT Solutions Pty Ltd. SHALL HAVE BEEN INFORMED OF THE POSSIBILITY OF SUCH DAMAGES, OR FOR ANY CLAIM BY ANY OTHER PARTY. THIS LIMITATION OF LIABILITY SHALL NOT APPLY TO LIABILITY FOR DEATH OR PERSONAL INJURY TO THE EXTENT APPLICABLE LAW PROHIBITS SUCH LIMITATION. FURTHERMORE, SOME JURISDICTIONS DO NOT ALLOW THE EXCLUSION OR LIMITATION OF INCIDENTAL OR CONSEQUENTIAL DAMAGES, SO THIS LIMITATION AND EXCLUSION MAY NOT APPLY TO YOU.

HIGH RISK ACTIVITIES.

The Software is not fault-tolerant and is not designed, manufactured or intended for use or resale as on-line control equipment in hazardous environments requiring fail-safe performance, such as in the operation of nuclear facilities, aircraft navigation or communication systems, air traffic control, direct life support machines, or weapons systems, in which the failure of the Software could lead directly to death, personal injury, or severe physical or environmental damage ("High Risk Activities"). ComIT Solutions Pty Ltd. and its suppliers specifically disclaim any express or implied warranty of fitness for High Risk Activities.

MISCELLANEOUS.

If any provision of this Agreement is held to be unenforceable, such provision shall be reformed only to the extent necessary to make it enforceable. This Agreement shall be governed by California law (except for conflict of law provisions). The application the United Nations Convention of Contracts for the International Sale of Goods is expressly excluded.

U.S. GOVERNMENT RESTRICTED RIGHTS. Use, duplication or disclosure by the Government is subject to restrictions set forth in subparagraphs (a) through (d) of the Commercial Computer-Restricted Rights clause at FAR 52.227-19 when applicable, or in subparagraph (c)(1)(ii) of the Rights in Technical Data and Computer Software clause at DFARS 252.227-7013, or at 252.211-7015, or to ComIT Solutions Pty Ltd's standard commercial license, as applicable, and in similar clauses in the NASA FAR Supplement. Manufacturer is ComIT Solutions Pty Ltd, 2/765 Burwood Rd, East Hawthorn, 3123, Victoria, Australia. ABN 24 093 555 705.