



Operating Instructions



Waterproof Wifi Camera

Please read this manual thoroughly before operating the unit,
and keep it for further reference.

Contents

1. Product Overview.....	2
1.1 Product Description.....	2
1.2 Specification.....	2
2. Application Instructions.....	3
2.1 Android system.....	3
2.1.1 Installation.....	3
2.1.2 Menu Operation.....	6
2.2 ISO system.....	7
2.2.1 Installation.....	7
2.2.2 Menu Operation.....	9
2.3 PC System.....	10
2.3.1 Installation.....	10
2.3.2 Menu Operation.....	11
3. Accessories.....	15



1. Product Overview

1.1 Product Description

This manual can help you to know and use WIFI camera, please read this manual carefully before use

As the development of wireless technology, wireless products quickly step into people's lives, this product combined image compression technology and data transmission technology, introduced a WIFI camera, for the continuously higher requirements of the public. The product has advanced digital image / voice compression, wireless transmission, iPod / phone / PC/ tablet monitoring functions, and completely replaces the traditional baby monitors!

1.2 Specification

1. Image Sensor: 0.3Mega 1/4 inch CMOS Sensor
2. Total Pixel: VGA(640*480), QVGA(320*240)
3. Video format: VGA
4. Infrared LED light: 12 PCS
5. IR distance: 15m
6. Distance: 100m (barrier-free)
7. Mirror/ Normal image: Switchable via Client Software
8. Display: LAN Peer to peer connection monitoring via Smart Phone (IOS device or Android)
9. Image Compression: MJPEG
10. Frame Rate: 30fps(VGA),30fps(QVGA) on PC ; 20-25fps(VGA) on mobile or tablet pc
11. Wireless Standard: IEEE 802.11b/g/n
12. Client Software: Wifi camera.apk/REECAM/ipcamera_8
13. Audio Output: 1 channel with 4 pin connector
14. Waterproof level: IP69K
15. Language: Chinese/English
16. Power supply: DC12-32V
17. Working temperature: -10°C~65°C



2. Application Instructions

2.1 Android System

2.1.1 Installation

Note: The operating system for Android client (smart phone / tablet) shall not be lower than version 2.2. Version 4.0 is preferred.

- 1) Copy the Android client “WIFI Camera.apk” into a smart phone. Set the



software up and find the application program

- 2) Connect the camera to power
- 3) Open the WLAN in smart phone. Search the hotspot of WIFI camera and connect (commonly the one not encrypted), such as



Note: Close and then re-open WLAN if the hotspot cannot be found.



- 4) When connected to WIFI signal from the camera, click [Search camera]

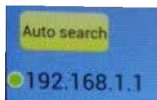


5) Click [Add] to add the camera



6) Search the camera

1. Auto search of the camera: click [Auto search] to search the camera. When camera is found, its IP address will be displayed. Click the IP address to



view the camera.



4



2. Manual search of the camera: click [Manual] to set up the username and password. Then click [Enter monitor] to view the camera.

Host: 192.168.1.1

Port: 80

User: admin

Password: blank

Name: user-default

Buffer time (ms): 1000



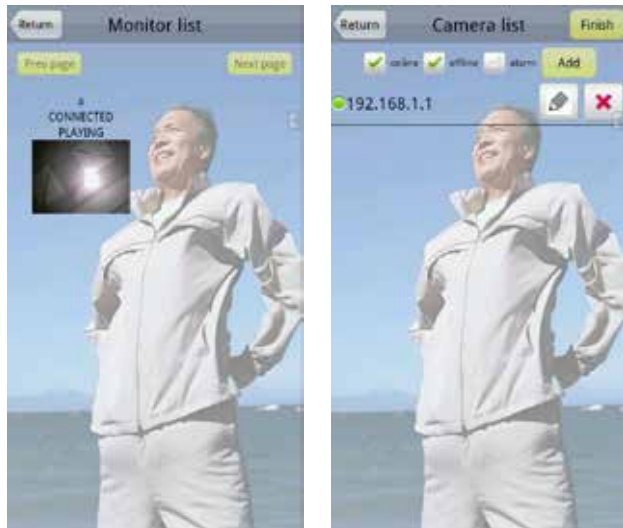
- 7) When camera is being viewed, video will be displayed on the smart phone. The connection to camera will be automatically saved. When screen is clicked on, menu will be displayed. When smart phone is displayed horizontally, the image will be zoomed to a full screen.



5



8) When connection to camera is saved, the camera can be found on the monitor list as a small icon. Click the icon to view the camera. You can click [Edit] in the camera list to edit the camera name or delete the camera.



2.1.2 Menu Operation



: To enable audio from the camera.



: To enable intercom (not available to this model).



: To take photo. Photos are automatically saved in the root directory of storage card.



: To take video. Videos are automatically saved in the root directory of storage card. If sound is to be recorded, audio shall be enabled first.



: PTZ Controller (not available to this model).



: To set the image as mirrored / non-mirrored.



: To decrease / increase brightness.

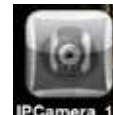


: To adjust menu size between 1:1, 4:3, 16:9 and full-screen mode.

2.2 ISO System

2.2.1 Installation

1) Download The client “Ipcamera_8” (updated version “ipcamera_12”) from App



Store. **IPCamera_11**

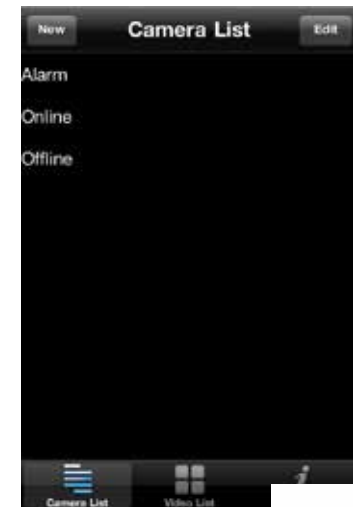
2) Connect the camera to power

3) Open the Wi-fi function in setting. Search the hotspot of WIFI camera and

connect (commonly the one not encrypted), such as **000000000001** .



4) Click **IPCamera_11** to display below dialog box

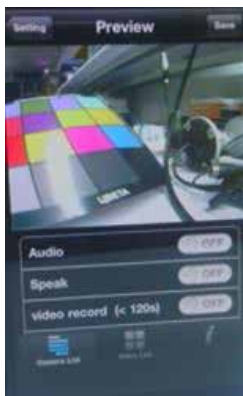


- 5) Click [NEW] to automatically search the IP address of camera - 192.168.1.1
- 6) Click the address 192.168.1.1 to display the dialog box for settings and input below information:

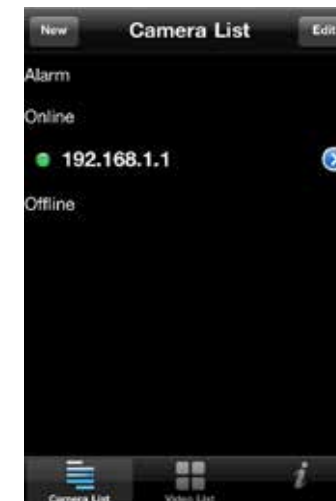
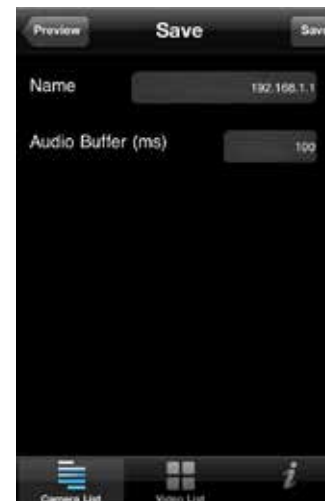
Host: 192.168.1.1
 Port: 80
 User: admin
 Password: blank



- 7) Click [Preview] to view the camera. When the device is displayed horizontally, the image will be zoomed to a full screen



- 8) Click [Save] to save the camera. You can edit the camera name. And then it will show on the camera list. It is convenient to view next time. You can click [Edit] to delete the camera.



2.1.2 Menu Operation

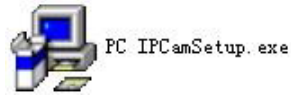
- [Audio]: To enable audio from the camera
- [Speak]: Not available to this model
- [Video record]: To take video. Videos are automatically saved in the root directory of storage card. If sound is to be recorded, audio shall be enabled first
- [Sanpshot]: To take a photo
- [Resolution]: To select the video resolution (the video of high resolution is more clear but slower)
- [Mode]: To choose the frequency of light wherever you are
- [Vertical Patrol]: Not available to this model
- [Level Patrol]: Not available to this model
- [Mirror]: To switch mirror/ normal image
- [Flip]: To reverse the image
- [Brightness]: To adjust the image brightness.
- [Contrast]: To adjust the image contrast



2.3 PC System

2.3.1 Installation

- 1) Install software “PC IPCamSetup.exe” into a PC.
- 2) Connect the camera to power
- 3) Open the Wi-Fi function. Search the hotspot of WIFI camera and connect (commonly the one not encrypted), such as 000000000001



- 4) After install the software, click IP Camera Tool to display below dialog box. The software will auto search the Wi-Fi camera. It can be set language.



- 5) Click the IP address, the browser will appear. And then you will see the box as below, and enter the username “admin”, password : blank.



10



- 6) Select the browser type to sign in

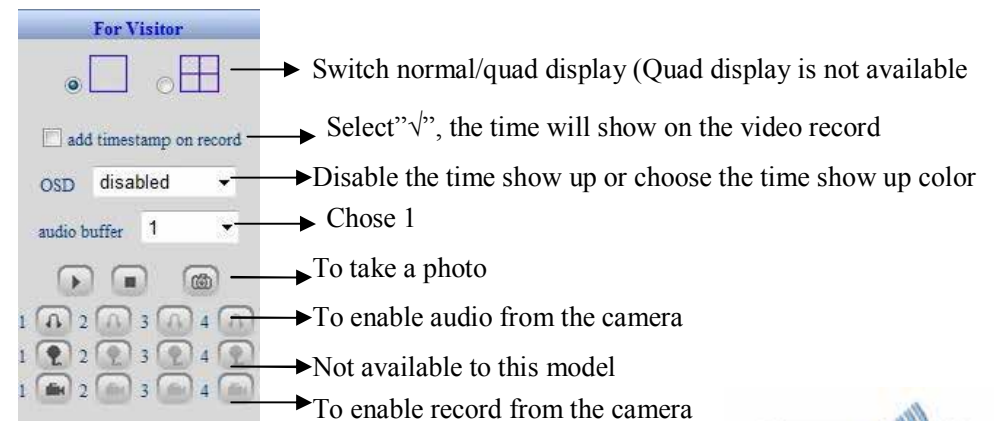


- 7) The left side is cameras image, and the right side is menu.



2.3.2 Menu Operation

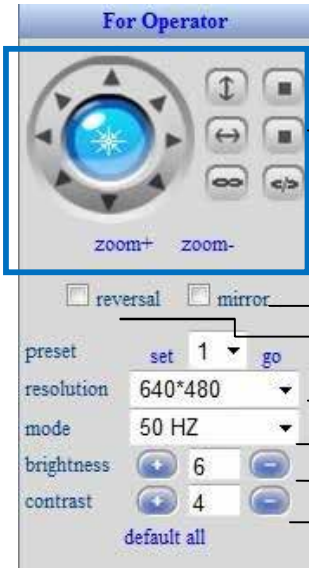
2.3.2.1 For visitor



11



2.3.2.1 For Operator



→ This part is not available now

→ To switch mirror/ normal image

→ To reverse the image

→ To select the video resolution

→ To choose the frequency of light wherever you are

→ To adjust the image brightness

→ To adjust the image contrast

2.3.2.1 For Administrator

- Device Info
- Alias Settings
- Date&Time Settings
- Users Settings
- Multi-Device Settings
- Basic Network Settings
- Wireless Lan Settings
- ADSL Settings
- UPnP Settings
- DDNS Service Settings
- Mail Service Settings
- Ftp Service Settings
- MSN Settings
- Alarm Service Settings
- PTZ Settings
- A&V daily schedule setting
- Decoder Settings
- Upgrade Device Firmware
- Backup & Restore Settings
- Restore Factory Settings
- Reboot Device
- Log
- Back



1. [Device Info]: View the Wifi camera information
2. [Alisa Setting]: Set the name of Wi-fi camera

Alias Settings	
Alias	anonymous
<input type="button" value="Submit"/> <input type="button" value="Refresh"/>	

3. [Date & Time Settings]: Set the time which show up in the recording. Select "√" in sync with PC time, it is auto update the local time.

Date&Time Settings	
Device Clock Time	01 January 1970 08:22:44
Device Clock Timezone	(GMT) Greenwich mean time; London, Lisbon, Casablanca ▾
Sync with NTP Server	<input type="checkbox"/>
Sync with PC Time	<input type="checkbox"/>
<input type="button" value="Submit"/> <input type="button" value="Refresh"/>	

4. [User Settings]: Set the visitor and administrator user name and password.

Users Settings		
User	Password	Group
admin		Administrator ▾
		Visitor ▾

5. [Multi-Devices Settings]: Not available
6. [Basic Network Settings]: Do not change the setting

Basic Network Settings	
Obtain IP from DHCP Server	<input checked="" type="checkbox"/>
Http Port	80
<input type="button" value="Submit"/> <input type="button" value="Refresh"/>	

7. [Wireless Lan Settings]: Not available
8. [ADSL Settings]: Not available
9. [Upnp Settings]: Not available
10. [DDNS Service Settings]: Not available
11. [Mail Service Settings]: Not available
12. [Ftp Service Settings]: Not available
13. [MSN Settings]: Not available
14. [Alarm Service Settings]: Not available



- 15. [PTZ Settings]: Not available
- 16. [A & V daily schedule setting]: Not available
- 17. [Decorder Settings]: Not available
- 18. [Upgrade Device Firmware]: If we have any upgrade files, we will send to you. Then you can find the files and upgrade.

Upgrade Device Firmware	
Upgrade Device Firmware	<input type="text"/> 浏览... <input type="button" value="Submit"/>
Upgrade Device Embedded Web UI	<input type="text"/> 浏览... <input type="button" value="Submit"/>

- 19. [Backup & Restore Settings]: You can back up the settings. When you want to use that setting you can restore it.

Backup & Restore Settings	
Backup	<input type="button" value="Submit"/>
Restore	<input type="text"/> 浏览... <input type="button" value="Submit"/>

- 20. [Restore Factory Settings]: If you set something wrong and cannot view the image, please restore the settings at first.
- 21. [Reboot Device]: Restart the software
- 22. [Log]: You can check the log in record

Log			
Thu, 1970-01-01 00:15:01	admin	192.168.1.2	access
Thu, 1970-01-01 00:22:33	admin	192.168.1.2	access

- 23. [Back]: Back to the video page

3. Accessories

1. Power Cable



2. Antenna

