



Mission Zero:
our promise to eliminate
any negative impact our company
may have on the environment
by the year 2020.

A 3D purple figure stands on a grey surface, holding a large purple question mark above its head. The figure casts a shadow to the left. In the background, a large, faint, 3D purple hand is visible, reaching towards the figure. The background is composed of dark grey and black geometric shapes.

INSTALLATION MANUAL

Contents

01	BEFORE STARTING	page 2
02	CONDITIONING OF MATERIALS	page 2
03	FLOOR PREPARATION	page 3
04	INSTALLATION SET OUT	page 4
05	ANTI-SLIP COMPOUND – INTER-TAC®	page 6
06	APPLICATION OF ADHESIVE	page 6
07	TACTILE	page 6
08	APPLYING TACTILE	page 7
09	TACTILE PLACEMENT	page 8
10	UNDERFLOOR HEATING	page 8
11	LAYING DIRECTION	page 9
12	COMMENCING THE INSTALLATION	page 9
13	ACCESS FLOORING	page 10
14	STAIRS	page 10
15	INSTALLING FIXTURES AND FURNITURE AFTER MODULAR CARPET INSTALLATION	page 10
16	FINISH	page 11
17	CONCLUSION	page 11
18	CUSHIONBAC MODULAR CARPET	page 11
19	UNBACKED SHEET GOODS	page 11
20	INSTALLATION OVER UNDERLAY	page 12
	SYSTEM SIX PERFORMANCE BROADLOOM	page 13

Appendices

01	CONCRETE SUBFLOOR REQUIREMENTS	page 16
-----------	--------------------------------	----------------

Introduction

This manual has been prepared by the InterfaceFLOR technical division to assist professional contractors and layers in the installation of InterfaceFLOR and modular carpet and InterfaceFLOR System Six® performance broadloom.

These instructions cover the most common installation circumstances. If a particular installation condition is not covered, the contractor

should contact an InterfaceFLOR representative.

If InterfaceFLOR or modular carpet is installed before construction is complete, any resulting staining, soiling, contamination or damage caused by building construction may void the end user's product warranty. The contractor should inform the appropriate person of this warranty implication.

01 BEFORE STARTING

It is the responsibility of the contractor to verify, before the installation, that material supplied conforms to owner's specifications, including correct product, colour and quantity.

Labels on each carton contain important information including: product, colour and manufacturing batch (dye lot information).

It is not recommended to mix dye lots in the same area, with the exception of the i2™ collection of products as they possess mergable dye lots.

Take particular notice of installation codes printed on cartons as this indicates the manufacturers' recommended installation method. However the client's preferred installation method should be confirmed and signed off by the installer before commencement of installation.

02 CONDITIONING OF MATERIALS

The installation location and all products and materials used in the installation, must be at temperature between 15 degrees C – 35 degrees C for a period of 48 – 72 hours before the installation begins. The temperature must remain within this range throughout the installation. Relative humidity in the area should be 45% ± 10%.

03 FLOOR PREPARATION

The subfloor must be rigid, dry, smooth, flat, level, sound, clean and free from harmful materials. When installing GlasBac® modular carpet products, no bitumen based substance must come in contact with the GlasBac backing.

The subfloor must be rigid to stop modular carpet from cupping.

Old carpet, under felt, loose laid vinyl, cushion backed vinyl and any old adhesive must be removed and floor scraped clean.

A Clean Floor – Floor should be free from all dirt, dust and harmful materials. Before applying Intertac the subfloor should be swept or vacuumed to remove all dust. Concrete or timber floors must be primed with an approved primer such as Roberts 370 or Polymer 6000 before application of Intertac.

A Dry Floor – All floors must be dry. New concrete floors must be checked for moisture as per AS2455-1995. Moisture content must not exceed levels indicated in Appendix 1.

Identify the Type of Floor

New concrete floors – Must be smooth and level as per Appendix 1.

Old concrete floors – Remove paint, sealer, grease, oil, adhesive and any harmful materials, especially bituminous based substances which are not compatible with GlasBac modular carpet products. All existing adhesive must be removed from the floor. Fill and level all cracks and

holes. Bring surface up to specification as in Appendix 1 using an approved latex levelling compound eg. Ardex K15 or equivalent, in accordance with manufacturer's directions. This levelling compound needs to be compatible with the backing system.

Any existing carpet, under felt, loose laid vinyl, cushion back vinyl and all existing adhesive must be removed and the floor scraped clean.

Vinyl Tiles – Damaged & loose vinyl tiles must be replaced or patched and all existing wax coated products are to be removed. Any existing bituminous based adhesive or underlay are to be removed when installing GlasBac modular carpet products.

Ensure that the bond between vinyl tiles and subfloor will last the service life of the modular carpet.

If a sealer is used, any reaction shall be the contractor and end-user's responsibility.

Ceramic and quarry tiles – All joints are to be filled and levelled as per Appendix 1. Use rough Sandpaper to remove surface glaze.

Wood Floors – Unless the subfloor is free from grooves, ridges, gaps, holes or similar imperfections, the use of a hard underlay is recommended.

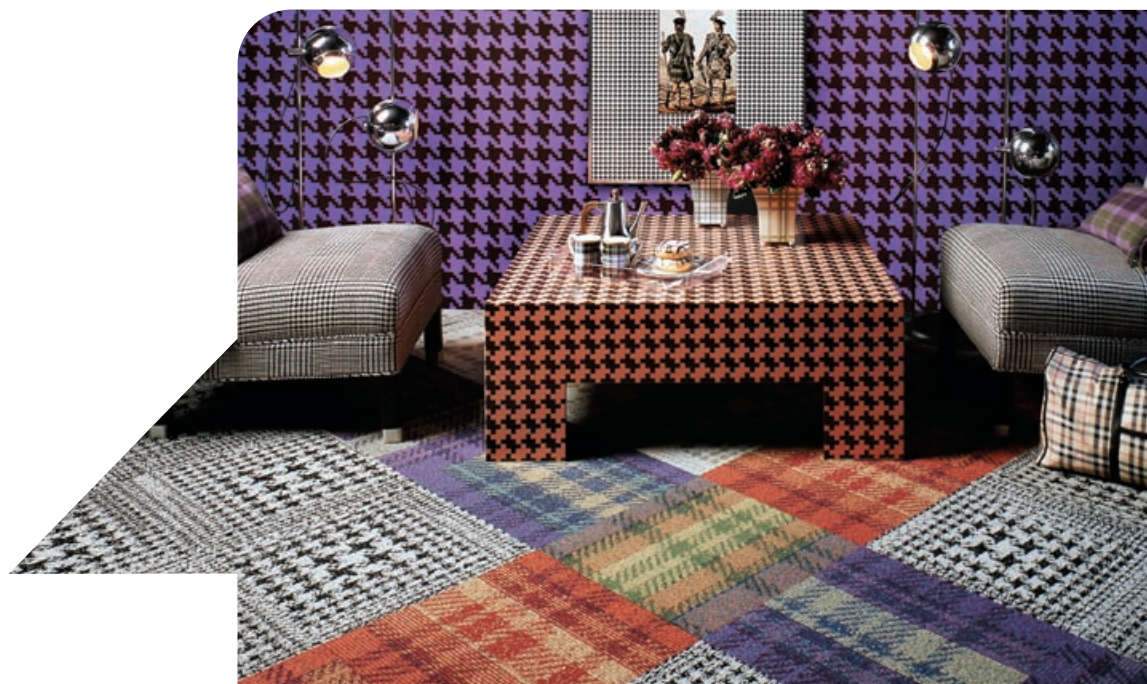
Underlay – The underlay should be either reduced density, as per AS2458 medium density fibre board types MDF and MDFMR in accordance with BS1142, or medium density fibrous cement sheet known as hard underlay. The underlay and the fixing material must be compatible with the InterfaceFLOR modular carpet and Inter-Tac adhesive. Installation shall be in accordance with the underlay manufacturer's instructions.

Sealer / Moisture Barrier – If a sealer is used on a concrete floor it must be compatible with vinyl and can be either a solvent or water based sealer which can be acrylic, epoxy, urethane or chlorinated rubber. Sealers must also be used in accordance with manufacturer's directions. If in doubt, coat sealer on back of the tile and leave overnight. It is not suitable for use if it remains sticky.

An example of a suitable product to use for a hydrostatic moisture problem would be Ardex WPM 300 Two Pack Epoxy or for a green slab – Ardex Green Slab Seal.



NOTE: WHEN INSTALLING NON IMPERVIOUS BACKED FLOOR COVERINGS, WATER BASED ADHESIVES, APART FROM PRESSURE SENSITIVE ADHESIVES, CANNOT BE USED ON A SEALED FLOOR.





NOTE: WHERE PRACTICAL THERE SHOULD BE UNCUT MODULAR CARPET TILES IN DOORWAYS AND HIGH TRAFFIC AREAS.

04 INSTALLATION SET OUT

General

In setting up, a point in the room shall be determined from which modular carpet can be laid to ensure that they are parallel to the longest wall.

Procedure

The procedure for setting out shall be in accordance with the following, as shown in Figure 1.

Step 1

Mark a line EF parallel to the longest wall.

Step 2

Mark point X along line EF at a distance to ensure that the requirements of perimeter modular carpet are a minimum of $\frac{1}{3}$ width.

Step 3

Mark points J1 and J2 at a distance of 3 m each side of X.

Step 4

At J1 and J2 scribe an arc at a distance of 5 m to establish point K where arcs intersect.

Step 5

Draw a line through points K and X which will be 90 degrees to line EF.

Single Room Installation

Step 1

Establish two chalk lines at 90 degrees as shown in Figure 1. This line may be established slightly off centre to enable you to meet other requirements, such as placing uncut modular carpet in traffic areas.

Step 2

Commencing only at the cross point of the two chalk lines, complete one row of modular carpet on each side of the centre line.

Step 3

Anchor your basic installation as shown in Figure 2. Complete the body of the installation by laying in a triangular method.

Step 4

Complete the remaining quadrants, section by section.

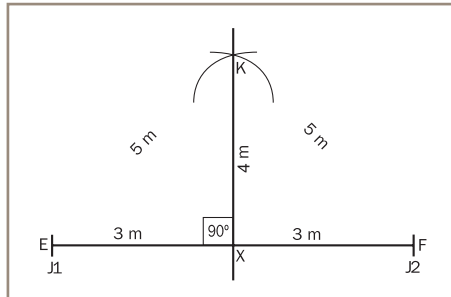


Figure 1

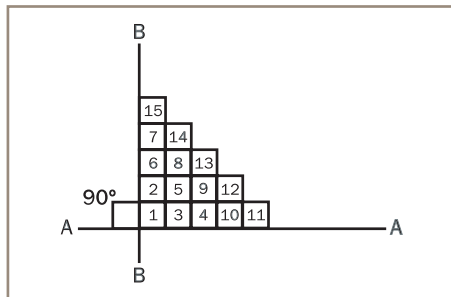
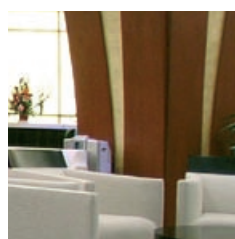


Figure 2



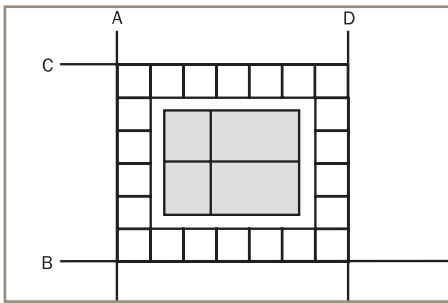


Figure 3a

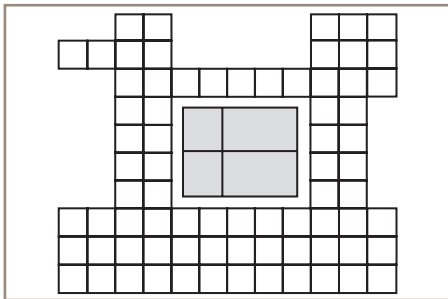


Figure 3b

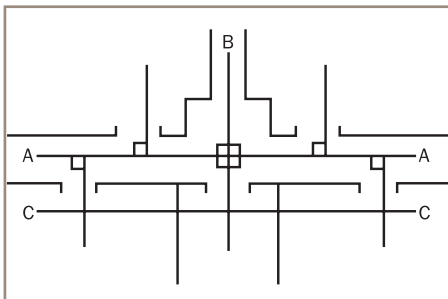


Figure 4

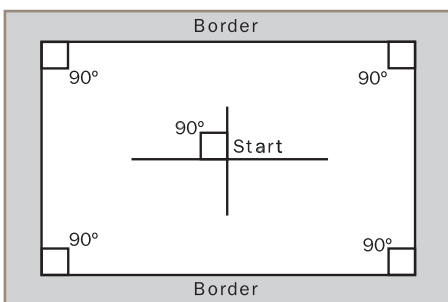


Figure 5

Large Area with Obstacles

Example: An Elevator

Step 1

Establish your starting point as shown in Figure 3a, with the A-B at 90 degrees.

Step 2

Pass your obstacle along line A and B with a minimum of 1 and $\frac{1}{3}$ modular carpet. At this point you will establish line C and D, parallel to line B and A.

Step 3

Complete modular carpet between A and B. (Notice, only a single row of modular carpet is used for this exercise).

Step 4

Continue to anchor your installation. Fill in the remaining quadrants as shown in Figure 3b.

Office Complex

Step 1

The crossover point, centre corridor, centre hall is the starting point for this example as shown in Figure 4. Line A and B should again be at 90 degree angles.

Lay a row of modular carpet on each side along chalk line A. At the entrance of each office passed, a chalk line is projected into that office at 90 degrees. Complete your corridor including cutting.

Step 2

Lay the modular carpet into the offices and anchor the installation. This will create line C parallel to line A. The total installation is lined out. Complete the body of installation by laying in a triangular method as shown in Figure 3.

Step 3

Complete all cut modular carpet in the corridor, including door ways. Lay and anchor modular carpet along line C. Fill in the remaining parts.

Borders

Set out chalk lines at the required distance for the border and/or field colour modular carpet. Ensure all 90 degree angles are correct. Use these chalk lines as wall lines and cut modular carpet up to these lines. Cut border modular carpet in from chalk line to compensate for any irregularities in the wall. Refer to Figure 5.





NOTE: IF SUBFLOOR IS AN ACCESS FLOOR THAT IS PRONE TO RUSTING THE USE OF TACTILE IS RECOMMENDED.



NOTE: TACK OFF TIME WILL ALSO BE LONGER AND RELEVANT TO HUMIDITY IN THE WORK AREA AND GENERAL SITE CONDITIONS.



NOTE: WHEN USING TACTILE IN A GLASBAC INSTALLATION THE TACTILE IS USABLE FOR TWO INSTALLATIONS AFTER WHICH A NEW TACTILE SHOULD BE USED.

NOTE: WHEN USING TACTILE IN A GRAPHLAR INSTALLATION THE TACTILE WILL REQUIRE REPLACEMENT FOR EACH INSTALLATION CHANGE.

05 ANTI-SLIP COMPOUND – INTER-TAC®

All InterfaceFLOR and Huega modular carpets require 100% application of Intertac unless utilising TacTile or otherwise specified by manufacturer.

Intertac is a low odour, solvent free pressure sensitive adhesive containing Intersept. (InterfaceFLOR anti-microbial additive)

The subfloor should be prepared to AS:2455 requirements.

An approved primer such as Roberts 370 or Polymer 6000 must be used on all porous surfaces.

06 APPLICATION OF ADHESIVE

Inter-Tac is a pressure sensitive compound. Application is by long nap paint roller. Rate of application is 10 m² to 14 m² per litre, depending on the porosity of the subfloor. On non-porous floors the rate of application will change and a spread rate greater than 14 m² per litre may be obtained in some cases.

It is mandatory that Inter-Tac must tack up before use. Colour must change from green to clear and it must not transfer.

Users assume all risk and liability resulting from the use of Inter-Tac. It is recommended that users carry out project specific trials to confirm the suitability and application of Inter-Tac.

07 TACTILES™

Glasbac & GlasbacRE – TacTiles can be used in the installation of both GlasBac and GlasBacRE carpet tile. To lift existing carpet tiles simply peel the carpet tile from the TacTile and fit a new carpet tile to the existing TacTile.

Graphlar – TacTile can be used in the installation of Graphlar carpet tile. To lift a Graphlar tile simply run a sharp knife along the tile edge and cut through the TacTile. Leaving the existing TacTile adhered to the carpet tile backing, lift the carpet tile from the floor and fit a new TacTile to the corner. The new Graphlar carpet tile can then be installed.

TacTile can be installed directly over wood, ceramic, marble and stone floors with minimum floor preparation as long as moisture and pH levels are within InterfaceFLOR recommendations.

Once the installation is completed and then maintained in line with InterfaceFLOR installation and maintenance recommendations TacTiles will be effective for the life of the installation providing they are not removed or replaced.

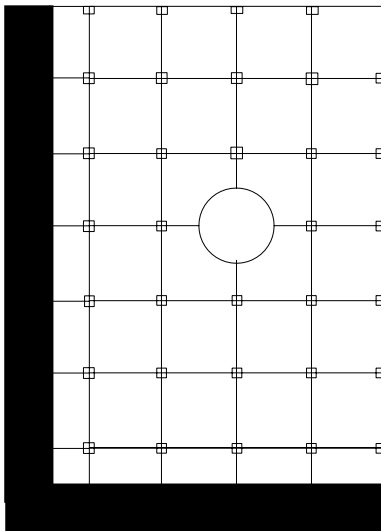
Rolling Loads – TacTiles can be used under areas that will be subjected to normal commercial rolling load applications. Eg: Castor Chair, Hand Trolleys or similar.



NOTE: A TACTILE MUST BE APPLIED UNDER EVERY CUT TILE ABUTTING THE FIELD TILES.

For areas that will be subjected to heavy rolling loads such as pallet trolleys, fork lifts, scissor lifts, etc, please contact InterfaceFLOR Technical Services for project specific advice.

Ramps – TacTile is not recommended for use on ramped floor areas. The use of Intertac pressure sensitive adhesive is recommended when installing modular tile to ramped floor areas.



08 TACTILE PLACEMENT

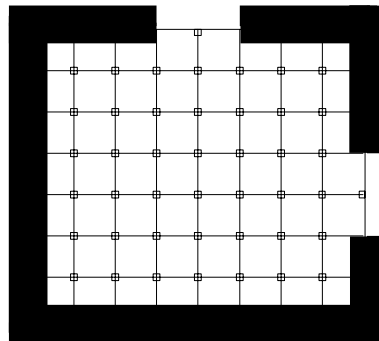
For Quarter Turn / Monolithic / Non Directional Installation methods

A TacTile should be placed under every corner of each tile across the installation area and all cut tiles abutting the field tiles.

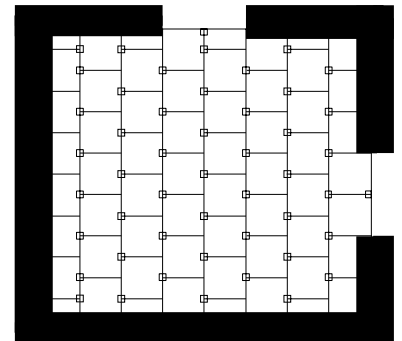
For Brick or Ashlar Installation methods

A TacTile should be placed on every other corner across the installation area and all cut tiles abutting the field tiles.

TacTiles should be applied based on the following diagrams.



Quarter-Turn / Monolithic / Non-Directional Installation methods will require 4 TacTiles per square metre



Brick or Ashlar Installation methods will require 4 TacTiles per square metre

TacTiles

Note: TacTiles are not recommended for installation of carpet tiles to stairs

Note: A TacTile must be applied under every cut tile abutting the field tiles.

Note: Glasbac & GlasbacRE Tile

TacTiles will be effective for the life of the installation providing they are not removed or replaced.

Where carpet tiles are replaced TacTiles will only be effective for 2 installation changes after which they need to be replaced to maintain the integrity of the installation.

Note: Graphlar Tile

TacTiles will be effective for the life of the installation providing they are not removed or replaced.

Where carpet tiles are replaced TacTiles will require replacement for each installation change to maintain the integrity of the installation.



NOTE: IF THE SUBFLOOR EXCEEDS THE REQUIRED MOISTURE AND PH REQUIREMENTS THE INSTALLATION OF A BARRIER COAT IS RECOMMENDED TO PREVENT FUTURE ISSUES FROM RISING MOISTURE AND PH.

FAILURE TO CARRY OUT THE CORRECT SUBFLOOR PREPARATION OR REMEDIAL WORKS MAY RESULT IN VOIDING OF THE PRODUCT WARRANTY.

09 TACTILE SUBFLOOR PREPARATION REQUIREMENTS

The subfloor requirements for a TacTile installation are the same as for any adhesive installation.

Please consult your InterfaceFLOR Installation manual for detailed recommendations.

TacTile can be installed directly over wood, ceramic, marble and stone floors with minimum floor preparation as long as moisture and pH levels are within InterfaceFLOR recommendations.

Notes on Subfloor Moisture and pH requirements

Moisture Content

Dependent on the testing method used the subfloor needs to be classified as “DRY”

Test Methods

Calcium Chloride Test

Required to be measured in pounds of moisture over a 1000 ft² area during a 24 hour period. An emission rate of 3.0 lbs. (1.4 kg) or less is acceptable

Hydrometer

Required to be 70% rh or less

Electrical Resistance Meter

Required to be 5.5% or less.

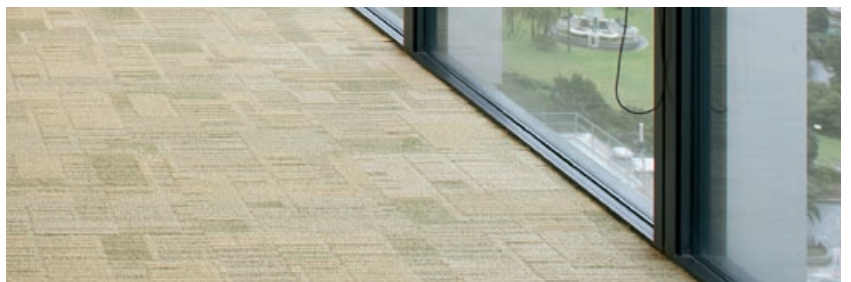
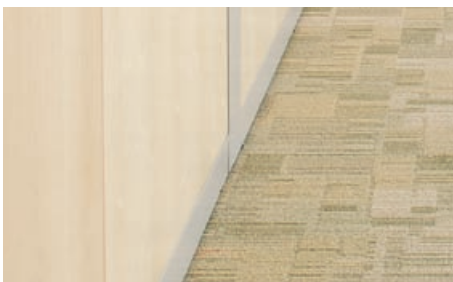
Subfloor pH requirement

The subfloor pH should be tested with a result of no more than pH 9.

10 UNDERFLOOR HEATING

InterfaceFLOR and Heuga modular carpet may be installed on internally heated floors provided that the surface temperature will not exceed 27 degrees C.

Underfloor heating must be turned off 48 hours prior to commencement of installation and shall not be turned on again until 48 hours after installation is completed to allow the adhesive to set.



11 LAYING DIRECTION

All InterfaceFLOR and Heuga modular carpets should be installed as per the directions printed on the carton. Installation methods & codes printed on the cartons are:

DIR	Directional
QTR	Quarter Turn
RDM	Random
SPEC	Specification Methods. (Refer to diagrams on inside back cover)

If SPEC code appears on the carton please confirm with the client their preferred installation method.

It is the installers responsibility to confirm the installation method prior to commencement on installation.



NOTE: ALL NEEDLE PUNCH PRODUCTS MUST BE INSTALLED QUARTER TURN.

12 COMMENCING THE INSTALLATION

Apply Inter-Tac as recommended. Lay one row of modular carpet down each side of the chalk line, then install the modular carpet using the stair method. This will quickly pin point if the grid is running out of alignment.

Alignment

As modular carpet is butted against each other, continually check (with fingers) that the joints are properly aligned. Do not install modular carpet that is out of square by more than 1 mm.

Tension

Ensure an even tension throughout the installation as this is vital to the overall appearance.

Lack of tension and pile entrapment may cause poor performance and will impair the appearance of the finished installation.

Over tension of the installation may cause peaking of the tile.

The cumulative space gained in GlasBac or Graphlar® modular carpet products should be 5 mm, measured over 11 modular carpet squares (10 joins). Any gain less than this may cause peaking and or buckling.

Cutting

All InterfaceFLOR and Heuga modular carpet must be cut from the backing side by overlaying the modular carpet, marking and cutting. A template should be used around columns.

Step 1 Firstly effect a light cut without attempting to cut right through.

Step 2 Then crack the modular carpet along the line cut.

Step 3 Complete by cutting right through the fibres with a straight utility or hook knife.



NOTE: MODULAR CARPET CUT ON AN ANGLE OR A CUT EDGE THAT IS EXPOSED TO HEAVY FOOT OR WHEELED TRAFFIC MAY NEED TO BE SEALED WITH LATEX.

NOTE : WHEN ABUTTING INTERFACEFLOR CARPET UP TO A HARD SURFACE FINISH OR EDGE TRIM THE TOP OF THE CARPET PILE SHOULD BE LEVEL WITH THE TOP OF THE HARD SURFACE OR EDGE TRIM. IF THE CARPET PILE SITS HIGHER THAN THE HARDSURFACE OR EDGE TRIM AND IS EXPOSED TO HIGH LEVELS OF TRAFFIC THIS MAY CAUSE DAMAGE TO THE CARPET EDGE.

13 ACCESS FLOORING

On Grid Access Flooring Installation – GlasBac®OG 600 x 600mm modular carpet

The installation of GlasBacOG differs from traditional on grid carpet laying in that you **do not** butt up the tiles to each other. Instead, installation is by placing the modular carpet locating buttons (attached to the backing) into the matching positioning holes on the access panel. Inter-Tac adhesive is not required. The locating buttons limit movement of tiles on the access panels.

Off Grid Access Flooring Installation – 500 x 500mm modular carpet

On access floors, off grid installation will mean that the edge of the modular carpet does not correspond with access floor panel joints.

Installation as per standard InterfaceFLOR modular carpet installation instructions.

Intertac adhesive and TacTile are both suitable for modular tile installation over access flooring.

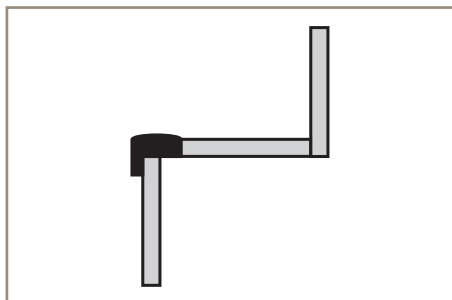
On access floors an application rate for Intertac of over 14 m² may be achieved in some cases.



NOTE: ON ACCESS FLOORS AN APPLICATION RATE FOR INTERTAC OF OVER 14 M² MAY BE ACHIEVED IN SOME CASES.



NOTE: IT IS IMPORTANT TO BRING THE MODULAR CARPET RIGHT UP TO THE UNDERSIDE OF THE NOSING, FLUSH WITH THE TREAD, AS THIS WILL SUPPORT THE LEADING EDGE OF THE NOSING AND PREVENT IT ROCKING AND COMING LOOSE. DO NOT BEND MODULAR CARPET OVER THE EDGE OF STAIR STEPS.



14 STAIRS

Stairnosing

**InterfaceFLOR modular carpet cannot be installed over the nose of a stair.
A metal or rubber nosing must be installed.**

Riser

Apply Inter-Tac to both the tile backing and the riser.

Allow Inter-Tac to tack up and place carpet for the riser in position.

Tread

Apply Inter-Tac to 100 per cent of tread.

The tread should be fitted after the riser to allow the tread carpet to hold the riser securely in position.

15 INSTALLING FIXTURES & FURNITURE AFTER MODULAR CARPET INSTALLATION

To avoid dislodging modular carpet during furniture and fixture placement, place standard sheets of plywood or cardboard over the complete installation.

If plastic type protection is used, any condensation is the responsibility of the contractor. Do not position adhesive tape on pile of modular carpet.



IT IS RECOMMENDED THAT ALL 12TH GAUGE PRODUCTS BE CHECKED THOROUGHLY FOR TUFT SPROUTS AND THAT ANY NOTICEABLE SPROUTS ARE NAPPED AS PART OF THE FINISHING PROCEDURE.

16 FINISH

Edge Restraint – In the event of an open perimeter area a fixed reducer strip anchored to the floor is recommended. The edge restraint should be the same height as the carpet and finish level with the carpet pile ensuring a smooth transition from one surface to the other.

Nap all slivers and tuft sprouts using napping shears.

It is recommended that all 12th gauge products be checked thoroughly for tuft sprouts and that any noticeable sprouts are napped as part of the finishing procedure.

Apply a final Vacuum or Pile Lifting process.

Ensure that the overall finished appearance is consistent throughout. Correct any defects including incorrect arrow direction.

Upon completion, a further vacuum or pile lift may be required. It is essential that lighting be in service to allow inspection under good lighting conditions.



ANY VARIANCE FROM ANY OF THESE INSTRUCTIONS WILL BECOME THE RESPONSIBILITY OF THE CONTRACTOR AND NOT THE MANUFACTURER AND SHALL VOID ALL OTHER WISE APPLICABLE WARRANTIES.

17 CONCLUSION

These installation procedures are recommended by the manufacturer and installation should only be carried out by experienced and competent carpet installers. Strict adherence to these procedures will result in a quality installation under most conditions. Any situation that can alter the installation procedure, such as the identification of defect material or unusual installation conditions, creates a responsibility for the contractor to notify both the owner and the manufacturer before proceeding.

Any variance from any of these instructions will become the responsibility of the contractor and not the manufacturer and shall void all other wise applicable warranties.

18 INTERFACEFLOR CUSHIONBAC™ MODULAR CARPET

Follow the same procedure as outlined for InterfaceFLOR modular carpet.

19 INTERFACEFLOR SHEET GOODS – UNBACKED

Apply 100% adhesive such as Roberts 95SF or Polymer 300. If installing to areas that will be subjected to excessive steam cleaning, ie.; hotel bar areas, gaming rooms etc., use adhesive such as Roberts 12SF or Polymer 365.

20 INSTALLATION OVER UNDERLAY

Bridgestone Airstep® 'Suporta Pad' Underlay

Prepare floor as outlined in Section 3, ensuring floor is primed using a product such as Roberts 370 or Polymer 6000 Primer.

Adhesion of 'Suporta Pad' to Subfloor

- 1 Before use, 'Suporta Pad' should be removed from its plastic packaging and fully unrolled for a period of no less than four hours. It is preferable that the product be left unrolled overnight.

Decide the position of the datum lines for alignment of modular carpet and offset the starting seam of the 'Suporta Pad' by 200mm from this line.

If installing 'Suporta Pad' under InterfaceFLOR sheet goods, the underlay should run at right angles to the floorcovering.

- 2 The Action Back downside of the 'Suporta Pad' should be bonded firmly to the subfloor with a product such as Roberts 656, using a 1.6mm x 1.6mm "V" notched trowel. For example, Roberts Switchblade V1.
- 3 The 'Suporta Pad' should then be lowered into the adhesive when "tack up" is evident and rolled with a roller of no more than 25 – 30 kgs. This ensures the 'Suporta Pad' is secured to the subfloor. All joins must be close fitting when positioned and excessive rolling should be avoided to allow curing of the adhesive.



NOTE: ADHESIVE SPREAD RATE WILL BE APPROX 5M² PER LITRE.

Adhesion of InterfaceFLOR and Heuga Modular Carpet

- 1 On the surface of the 'Suporta Pad', follow the procedure as outlined in Section 4 for the Set Out using a pencil or waterproof marker.
- 2 Apply Roberts 656, or the equivalent adhesive, to the surface of the underlay using a 1.6mm x 1.6mm "V" notched trowel and allow to dry per manufacturer's specifications before laying carpet into adhesive. In some conditions an air mover may be required to assist with tack up time.
- 3 Commence installing modular carpet as outlined in Section 8.
- 4 Roll completed installation using a roller no more than 25-30 kgs.
- 5 Finishing should be carried out in accordance with AN/NZS 2455.2 – 1996 – Textiles floor coverings installation practice, and in line with manufacturers instructions.



SYSTEM SIX® PERFORMANCE BROADLOOM

Installation Instructions

01 BEFORE STARTING

It is the responsibility of the contractor to verify, before the installation commences, that the material supplied conforms to the project specifications.

ie.; Correct Product – Correct Colour – Correct Quantity

02 CONDITIONING OF MATERIALS

Due to the nature of textile materials, they need to acclimatise to the atmospheric conditions that will prevail after the installation and during use. InterfaceFLOR System Six should be unpacked and allowed to condition to the installation area for a period of 24 – 48 hours. This area must have a minimum temperature of 15 degrees C to 35 degrees C. Relative humidity in the area should be 45% ±10%.

03 FLOOR PREPARATION

Follow procedure as previously outlined.

04 UNDERFLOOR HEATING

System Six may be installed on internally heated floors provided that the surface temperature will not exceed 27 degrees C. Underfloor heating must be turned off 48 hours prior to commencement of installation and shall not be turned on again until 48 hours after installation is completed to allow the adhesive to set.

05 ADHESIVE APPLICATION

- 5.1** Prime the subfloor using a primer such as Roberts 370 or Polymer 6000.
- 5.2** System Six requires 100% application of Intertac using a long nap paint roller. Lay product into adhesive when adhesive is semi-clear.
- 5.3** InterfaceFLOR System Six Seam Sealer should be used to weld cut edges together in accordance with the fixing instructions below.
- 5.4** InterfaceFLOR System Six Seam Cleaner should be used to remove excess Seam Sealer immediately upon application.
- 5.5 Coverage for System Six.**
 - 1 Litre of Inter-Tac will cover approximately 10 m² to 14 m² depending on subfloor porosity.
 - 1 x 500 ml container of System Six Seam Sealer will seal approximately 100 l/m.



NOTE: IT IS ESSENTIAL THAT ALL PERIMETER CUTTING IS ACCURATE, AS SYSTEM SIX IS NOT DESIGNED TO STRETCH. IF INSUFFICIENT IS TRIMMED OFF, BUBBLING WILL RESULT.

06 INSTALLATION

All InterfaceFLOR products carry directional arrows on the backing. It is essential that each abutting piece of System Six performance broadloom is installed with the arrows in the same direction.

Cutting

- 1 System Six should be cut into appropriate lengths for the entire area to be fitted, allowing sufficient time for the sheets to settle. Ensure a suitable margin is allowed to assist subsequent edge fitting.
- 2 To start the seam, select one edge of each carpet length. With the aid of a chalk line (white chalk only) and straight edge, trim off one factory edge to make a clean straight edge. Slightly angle the cutter into the backing and away from the face yarn to produce a bevel cut that will help to make a tight seam. A 'Stanley' type knife with a concave blade is recommended.
- 3 To ensure a well fitted seam, use the trace cutting method to cut the second carpet edge. This is done by sliding the second factory edge 30 mm under the first cut edge. Using the first cut edge as a guide, trim the second edge by slightly angling the cutter into the backing and away from your face yarn to produce a bevel cut that will help make a tight seam, as outlined above.
- 4 This procedure may then be repeated for subsequent pieces, working from the centre of the area outwards. Position each of the cut edges together to check the integrity of the seam. Retrace and cut the seam if it does not fit together properly. The seam should be tight however, without compression.
- 5 Perimeter fitting now takes place with the aid of a sharp knife or wall trimmer such as a Roberts – # 10-905
- 6 For all cross joins, follow the same procedure as outlined above.



NOTE: FOLLOW THE INSTRUCTIONS ON ADHESIVE CAREFULLY. ALLOW INTER-TAC TO REMAIN OPEN LONG ENOUGH TO DEVELOP A GOOD TRANSFER TO THE BACKING. TOO LITTLE TACK UP WILL PREVENT ADHESIVE FROM DRYING, WITH TOO MUCH RESULTING IN INSUFFICIENT ADHESION OR POSSIBLE CONTAMINATION FROM AIRBORNE PARTICLES.

Fixing

- 1 Carefully fold/roll back approximately half one width on either side of the centre seam, being careful not to shift the carpet.
- 2 Apply Inter-Tac as set out on page 13, Section 5 – Adhesive Application.
- 3 Re-lay one width of carpet onto the adhesive. To ensure correct bond, a light roller, no more than 25 – 30 kgs, should be used. This will guarantee even transfer to the adhesive and remove any trapped air bubbles. Excessive rolling should be avoided.
- 4 Seal the same by applying a consistent bead of System Six Seam Sealer to the cut edge of the backing. Full continuity of the seam sealer is essential.
- 5 The adjacent edge should now be carefully abutted using a seam tractor to finish the joint. Care should be taken to minimise the ingress of the sealer into the carpet pile fibres.



NOTE: EXCESS SEALER MUST BE IMMEDIATELY REMOVED BY WIPING WITH THE APPROPRIATE SEAM CLEANER.

6 Other seams and edges may now be fitted following similar procedures.

7 On completion, a roller should once again be passed over the whole carpet area to ensure all air bubbles are removed from under the backing.

Edge Restraint

In the event of an open perimeter area a fixed reducer strip anchored to the floor is recommended. The edge restraint should be the same height as the carpet and finish level with the carpet pile ensuring a smooth transition from one surface to the other.

Treatment of Stairs

InterfaceFLOR System Six is suitable for installation on stair ways provided a suitable stair nosing is fitted.

Warnings

- 1** Under no circumstances must System Six backing come into contact with bituminous-based adhesives. If this happens, there is a chance of plasticiser migration, which will damage the backing and sub-floor and reduce performance.
- 2** In order to minimise the possible effects of shading, InterfaceFLOR products are dispatched in dye batches which may be readily identified. Varying dye batches must not be mixed, except for the i2 collection of products as they possess mergable dye lots.
- 3** Any variation in site practices to the above may have the effect of rendering any guarantee invalid. InterfaceFLOR cannot accept responsibility for faults occurring as a result of methods of installation varying from those outlined above. These instructions should also be read in conjunction with InterfaceFLOR Aust Pty Limited conditions of sale.
- 4** Adhesives and floor preparation materials must be used in accordance with manufacturer's recommended procedures or precautions regarding safe handling procedures.

Storage

System Six can be stored laying down, stacked no more than three rolls high on a pallet or in racks.

Note

System Six is a specialised product and should not be compared with other broadloom products.

Further Information

All queries associated with the installation of InterfaceFLOR modular carpet or System Six performance broadloom should be directed to InterfaceFLOR Technical Services or Client Services on 1800 804 361.

APPENDICES

01 CONCRETE SUBFLOOR REQUIREMENTS

1 Construction

Concrete subfloor shall be finished off true to grade and in accordance with good building practice and shall be free from rising moisture as per AS2455-1995.

2 Surface

(a) Planeness

When a straight edge 150 cm long is placed on the surface in any position, no part of the surface shall be more than 6 mm below the straight edge.

(b) Smoothness

When straight edge 150 mm long is placed on the surface position, no part of the surface shall be more than 1 mm below the straight edge.

(c) Finish

New concrete floors shall be steel troweled to a smooth surface but not to a glass finish. They shall be free from score marks, grooves, depressions and scraped free of foreign materials.

3 Dryness

Before installation commences, the dryness of subfloor should be determined.

For InterfaceFLOR and Heuga modular carpet the moisture content shall not exceed 5.5 per cent, using a moisture unit. If a hydrometer is used, reading should not be greater than 70 per cent at 15 degrees C or above.

4 Cleanliness

Before installation begins, foreign materials such as grease, oil, paint, existing floorcovering and any other harmful materials, should be removed. Any surface treatment or old adhesive that will effect the new adhesive or the holding power of the modular carpet should be treated or removed. The floor shall be vacuumed and washed to ensure a perfect bond.

5 Porosity

All concrete floors or floors that have been filled using a levelling compound should be sealed using a sealer compatible with the backing system.

6 Alkalinity

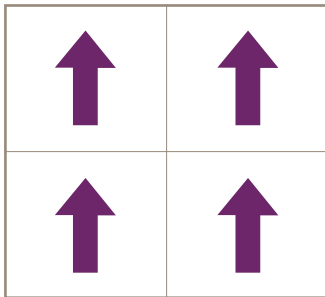
Test for high alkalinity by wetting the floor and using pH test paper or meter. If the pH is over 9, wash floor with a mixture of 30 per cent vinegar and 70 per cent water. Rinse floor and retest. Repeat if necessary until pH is equal or less than 9.



02 INTERFACEFLOR INSTALLATION METHODS AND CODES

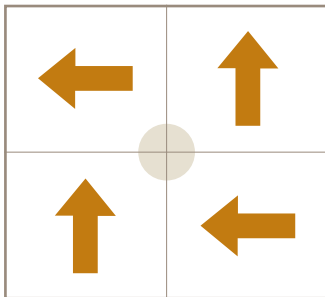
DIRECTIONAL Installation – Code DIR

An arrow is printed on the back of each modular tile to indicate pile direction. Make sure the arrows point in the same direction throughout your installation.



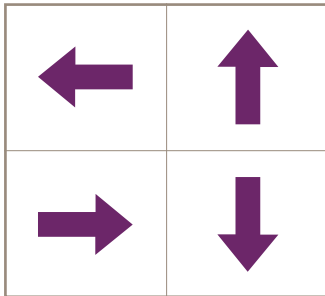
QUARTER TURN Installation – Code QTR

In this case, the arrows should be turned 90 degrees every other modular tile.



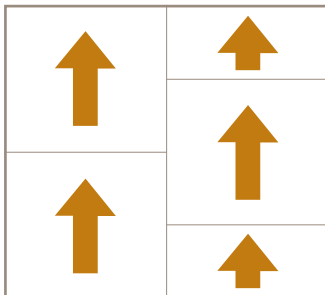
RANDOM Installation – Code RDM

This pattern allows installation of modular tiles without regard to arrow direction.



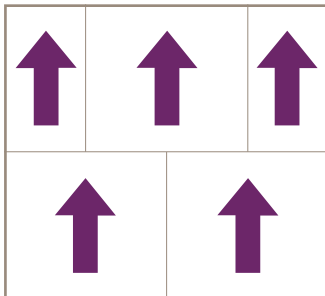
ASHLAR Installation

This pattern is created by offsetting the side joins of the modular tiles. All arrows should point in the same direction.



BRICK Installation

This pattern is created by offsetting the front and back joins of the modular tiles. All arrows should point in the same direction.



Code SPEC – Specification Methods can represent either: **Directional**, **Quarter Turn**, **Ashlar** or **Brick Installation**.

The codes printed on the cartons indicate the manufacturers' recommended installation method. However it is the installers' responsibility to confirm the clients' preferred installation method prior to commencement of installation.



CONTACTS



Australia

InterfaceFLOR Australia Pty Limited

Phone: 02 8332 2400

Fax: 02 9698 3396

Email: enquiries.ap@interfaceflor.com

Web: www.interfaceflor.com.au

New Zealand

InterfaceNZ Ltd

Phone: 0800 800 656

Email: enquiries@interfacenz.com

Web: www.interfacenz.com

Singapore

Phone: +65 6478 1510

Web: www.interfaceglobal.com

China

Phone: +85 2 2802 0838

Email: hkgweb@ap.interfaceinc.com

Web: www.interfaceglobal.com

Japan

Phone: +81 3 5421 1560

Email: jpnweb@ap.interfaceinc.com

Web: www.interfaceglobal.com

Thailand

Phone: +66 2459 1052

Web: www.interfaceglobal.com

- Interface, InterfaceFLOR, Intersept, GlasBac & System Six are registered trademarks of Interface Inc.
- InterTac is a registered trademark of Interface Aust Pty Limited.
- Airstep is a registered trademark of Bridgestone Australia Ltd.
- ™ i2 is a trademark of Interface Aust Pty Limited.