

# Guardaseal Belt Support System



**MARTIN**  
ENGINEERING

## Installation Operations Manual

Revision	Description of Change	Changed By	Date
A	Added Final Checklist	AS	28/5/07
B	Updated Melbourne Address & Removed SA Address	SH	3/08/09
C	Final Checklist Updated Items 4 & 5 Reversed	SH	15/04/10
D	Removed Mt isa contact details	KO	21/6/12
E	Updated format of manual	KO	11/9/12
F	Updated drawing F0251	KO	5/1/13
G	Inserted updated drawing F0251	KO	11/2/14
H	Updated office details	KO	11/3/14

# **ENGINEERING SERVICES and SUPPLIES**

## **OFFICE DETAILS**

<b>Location</b>	<b>Address</b>	<b>Phone &amp; Fax</b>
<b>CURRUMBIN</b>	11 – 13 Traders Way PO Box 121 Currumbin QLD 4223 <a href="mailto:esscur@esseng.com.au">esscur@esseng.com.au</a>	Phone: (07) 5589 2000 Fax: (07) 5521 0347
<b>EMERALD</b>	Unit 11 / 115 Roberts Street PO Box 1861 Emerald QLD 4720 <a href="mailto:esseme@esseng.com.au">esseme@esseng.com.au</a>	Phone: (07) 4982 4855 Fax: (07) 4987 5118
<b>GLADSTONE</b>	Unit 2/34 Chapple Street PO Box 1475 Gladstone QLD 4680 <a href="mailto:essgla@esseng.com.au">essgla@esseng.com.au</a>	Phone: (07) 4972 3759 Fax: (07) 4972 2866
<b>KALGOORLIE</b>	Unit A 255 Dugan St Kalgoorlie WA 6430 PO Box 10471 Kalgoorlie WA 6433 <a href="mailto:esskal@esseng.com.au">esskal@esseng.com.au</a>	Phone: (08) 9021 7991 Fax: (08) 9021 7291
<b>KARRATHA</b>		Phone: (08) 9144 0689 Fax: (08) 9144 0682
<b>MACKAY</b>	1 Progress Street Paget, QLD 4740 PO Box 5755 Mackay Mail Centre QLD 4741 <a href="mailto:essmac@esseng.com.au">essmac@esseng.com.au</a>	Phone: (07) 4952 4600 Fax: (07) 4952 4717
<b>MAITLAND</b>	Unit 2 Barton Court 6 Johnson Street Maitland NSW 2320 <a href="mailto:essmai@esseng.com.au">essmai@esseng.com.au</a>	Phone: (02) 4932 3544 Fax: (02) 4932 3611
<b>PERTH</b>	19 Clavering Road Bayswater WA 6053 26 Midas Road Malaga WA 6090 <a href="mailto:essper@esseng.com.au">essper@esseng.com.au</a>	Phone: (08) 9370 3155 Fax: (08) 9272 5130
<b>TOWNSVILLE</b>	Unit 6 40-42 Carmel St Garbutt QLD 4814 <a href="mailto:esstow@esseng.com.au">esstow@esseng.com.au</a>	Phone: (07) 4755 2776 Fax: (07) 4779 6236
<b>SOUTH AUSTRALIA</b>	5 Cormorant Court. Middleton. SA . 5213 <a href="mailto:esssa@esseng.com.au">esssa@esseng.com.au</a>	Mobile: 0408 948 175
<b>VICTORIA</b>	Unit 4 / 314 Governor Road Braeside VIC 3195 <a href="mailto:essvic@esseng.com.au">essvic@esseng.com.au</a>	Phone: (03) 9580 0388 Fax: (03) 9587 5199
<b>WOLLONGONG</b>	Unit 1 / 20 Doyle Avenue PO Box 343 Unanderra NSW 2526 <a href="mailto:esswol@esseng.com.au">esswol@esseng.com.au</a>	Phone: (02) 4272 4422 Fax: (02) 4272 4434
<b>TOLL FREE 1800 074 446 FROM ANYWHERE IN AUSTRALIA VSS TOLL FREE 1800 300 877</b>		

## **WARRANTY NOTE**

**ESS WARRANTS** the **Guardaseal Belt Support System** to be free of defects both in materials and workmanship for a period of 12 months from the date of despatch of the product from the **ESS** factory. The warranty given by **ESS** in this regard will extend only to replacing or repairing product shown to be defective.

The warranty also is subject to the following restrictions:

- (a) Installation of the product contrary to the instructions contained in the supplied manual will void such warranty absolutely;
- (b) The warranty will not extend to any liability for injuries incurred and which result from the use of the product contrary to the instructions in the manual;
- (c) Save as prescribed by law, **ESS** will not be liable for any damage sustained by a purchaser or a third party by way of consequential loss arising out of defects in the product.

You are asked to note that **ESS** offers purchasers a service whereby either:

- (a) It will install the product and certify the correctness of such installation, or
- (b) Certify the correctness or otherwise of the installation of the product by third parties.

This certification service is designed to ensure that you obtain the full benefit of the **ESS** warranty hereby provided. If you would like to take advantage of the installation certification service provided, please contact **ESS** regarding the service.

Refer to the Final Checklist at the back of this manual.

Visit the **ESS** website [www.esseng.com.au](http://www.esseng.com.au) to register your product warranty.

THE CONTENTS OF THIS MANUAL ARE COPYRIGHT TO:

**ESS ENGINEERING SERVICES AND SUPPLIES PTY LTD**  
**ALL RIGHTS RESERVED**

Information contained herein is for use in the operation of **Guardaseal Belt Support System**, purchased from **ESS** and cannot be passed on to any other party without express permission, in writing, from **ESS**.

# **INDEX**

## **SECTION 1**

**SAFETY**

## **SECTION 2**

**INTRODUCTION**

## **SECTION 3**

**INSTALLATION**

## **SECTION 4**

**COMMISSIONING**

## **SECTION 5**

**OPERATOR TRAINING**

## **SECTION 6**

**ROUTINE MAINTENANCE AND SERVICE**

## **SECTION 7**

**TROUBLE SHOOTING**

## **SECTION 8**

**INSTALLATION ARRANGEMENT DRAWING**

## **SECTION 9**

**EXPLODED PARTS DRAWING**

## **SECTION 10**

**FINAL CHECKLIST**

## **SECTION 1 - SAFETY**

The GUARDASEAL is designed to be quickly and easily serviced by appropriate personnel.

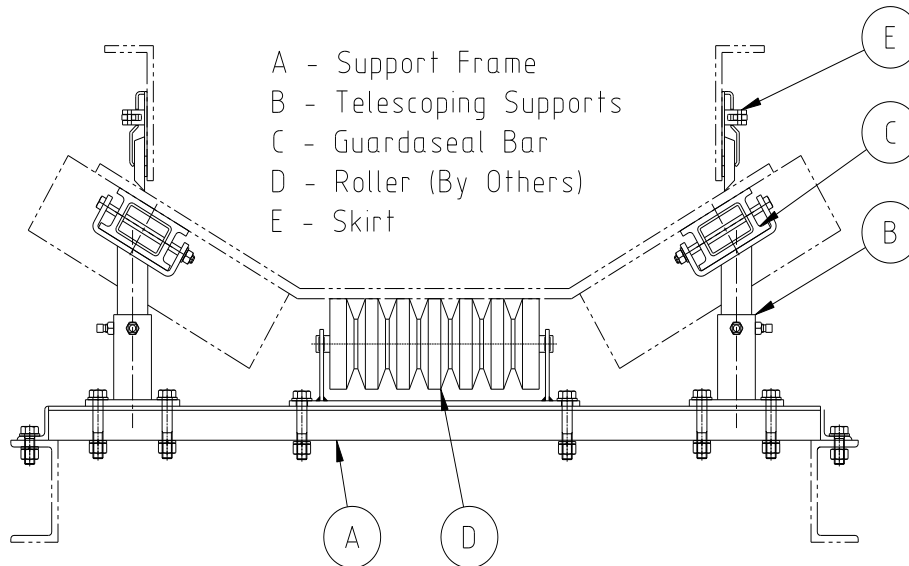
Under no circumstances should servicing or installation of the cleaner be carried out whilst the belt is in operation.

The conveyor must be shut down and locked out before any person enters or reaches into the conveyor enclosure.

Ensure that only suitably qualified and trained personnel install and service this product. Ensure that all site and statutory safety procedures are followed.

## SECTION 2 - INTRODUCTION

The **ESS** Guardaseal Belt Support System consists of a telescoping steel frame, fitted with low friction UHMW-Polyethylene bars that are designed to be easily removed without the necessity of pulling out the support frame from the conveyor. The System is fabricated to conform exactly to the troughed belt profile (FIG. 1).



**FIG. 1**

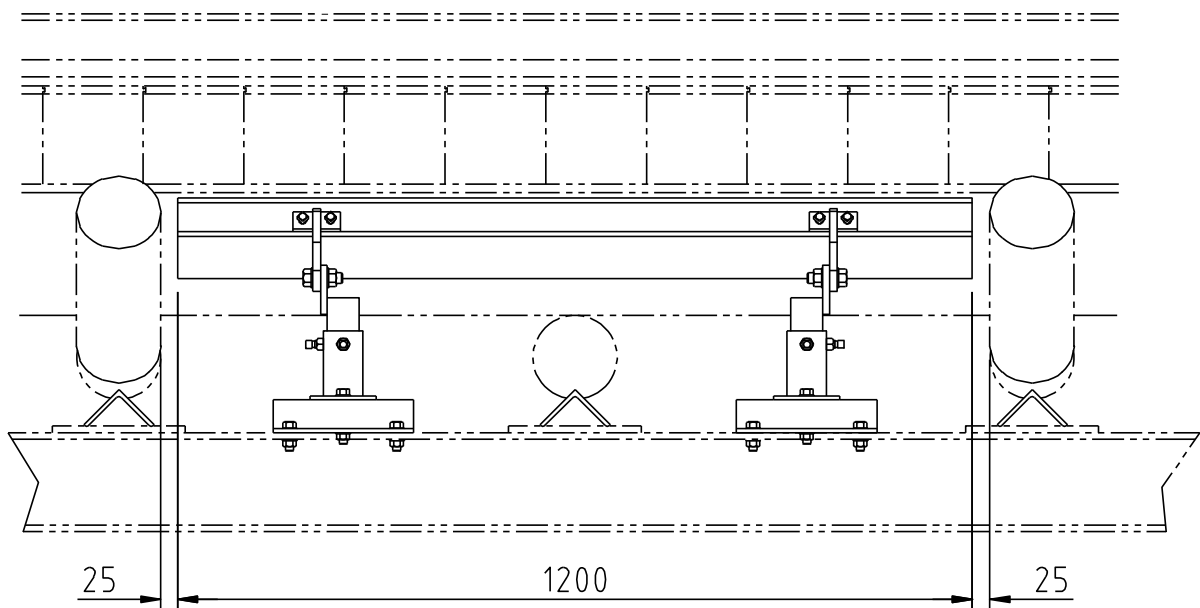
The **ESS** Guardaseal Belt Support System holds conveyor belts in a stable, sag free position to allow effective sealing. By minimising belt vibration and sag the Guardaseal Belt Support System reduces escaping material and risk of damage to the belt and conveyor accessories. Guardaseal bars provide a low friction, self lubricating surface for conveyor belts to skim over without heat buildup or undue wear on the belt surface or bars. The **ESS** Guardaseal Belt Support System is not intended to absorb impact.

## **SECTION 3 - INSTALLATION**

### ***Installation Procedure***

1. Determine approximate installation position for each Support System on the conveyor and place the appropriate Systems adjacent to the installation area.
2. Before commencing installation or any work around the conveyor belt ensure that the belt is isolated and tagged.
3. The **ESS** Guardaseal Belt Support System is intended to be installed between idler troughing assemblies. Multiple Support Systems will have an idler troughing assembly between each successive System. Ensure that the idler assemblies are either already installed or available at the installation site. If the idlers are already installed, check that sufficient clearance is available between successive sets of rollers to fit a Support System. Standard Systems are 1200mm long and require 25mm clearance at each end between System bar and roller (FIG. 2). If required, the Guardaseal Bars can be easily cut to suit on site.
4. Assemble the necessary tools and safety equipment required for the job.

**NOTE: BEFORE PROCEEDING WITH INSTALLATION, ENSURE THAT THE CONVEYOR BELT DRIVE IS FULLY ISOLATED AND LOCKED OUT.**

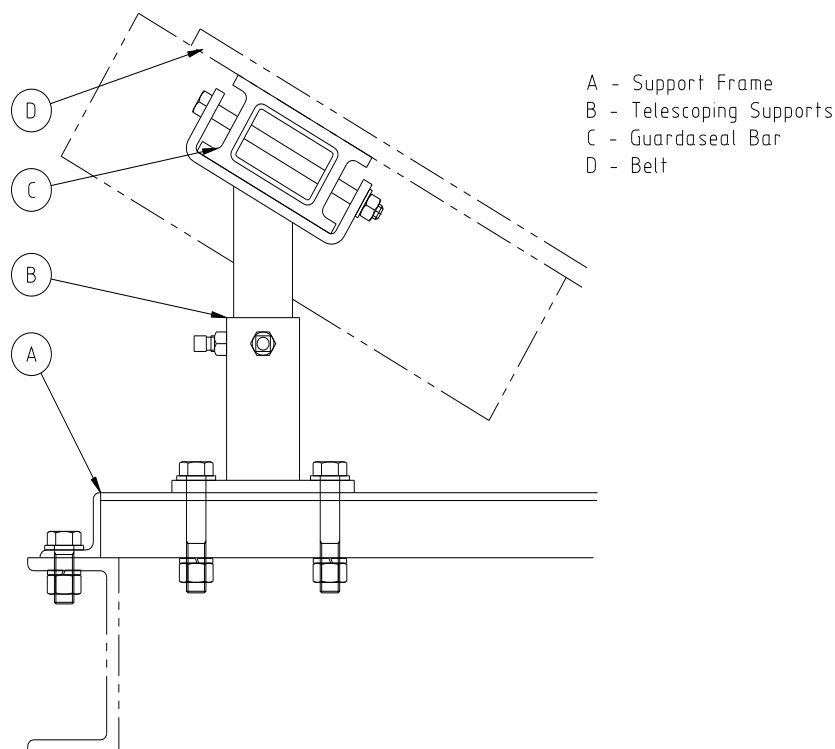


**FIG. 2**

5. Determine the installation position for the Support System/s The System/s should be installed to cover the entire skirted section of the conveyor belt. Having determined the position of the first Support System, place the first support frame onto the conveyor stringers in the appropriate position and align with stringers. Ensure that the support frame is centred and squared to the stringers and clamp into position. Repeat with other support frame.
6. Slide the telescoping supports onto the Guardaseal Bar at a distance apart the same as the support frames. Slide this assembly onto the support frames until the Guardaseal Bars are under the skirting. Adjust the telescoping frames so that the Guardaseal Bar sandwiches the belt firmly between the skirting and the Bar (FIG. 3).
7. If not already in position, install an idler set either side of the Support System ensuring that 25mm clearance will be available at both ends of the Guardaseal Bars (FIG. 2).
8. Repeat the above procedure for all subsequent Systems.

**NOTE: IF YOU HAVE ANY PROBLEMS, OR ARE UNCLEAR ON ANY INSTALLATION STEP, CONTACT *ESS* ON OUR CUSTOMER SERVICE NUMBER 1800 074446.**

9. Remove danger tags and return conveyor to service, following plant procedures.



**FIG. 3**



## **SECTION 4 - COMMISSIONING**

No special commissioning procedures are required for Guardaseal Support Systems. Provided the Systems are installed as per the drawing and instructions, then operational attention should not be required.

### ***A note on safety:***

No additional safety hazards are present with Guardaseal Support Systems other than normal conveyor belt dangers.

In particular:

- Beware of moving conveyor belts.
- Beware of pinch points
- Do not attempt to install, maintain or disassemble any part of a conveyor belt without first isolating and tagging the conveyor drive.

## **SECTION 5 - OPERATOR TRAINING**

### ***Servicing***

There are no operator serviceable or adjustable functions on an **ESS** Guardaseal Support System.

No in-service procedures need to be followed, other than normal conveyor belt operating procedures.

### ***Safety***

As mentioned in Section 4, no additional safety hazards exist with an **ESS** Guardaseal Support System, other than normal conveyor belt dangers.

- Do not attempt to perform any job on or around a moving conveyor belt - isolate and tag the belt first.

### ***Problems***

The operator, during routine conveyor inspections, should be alert to the following problem indicators:

- Smoke or burning rubber smell - the belt should be stopped immediately, and the problem located. It is far more likely to be a seized impact idler or a skirting problem, but could possibly indicate an Support System fault.
- Leakage of material from skirts at load zone - this should be notified to the appropriate maintenance personnel for attention at the earliest plant stoppage. It may mean that skirting requires attention, and/or that the Support System wings require adjustment or are worn.

## **SECTION 6 - ROUTINE MAINTENANCE AND SERVICE**

### ***Safety***

Before attempting any maintenance on or around a conveyor belt, ensure that the belt drive is isolated and tagged.

### ***General***

The **ESS** Guardaseal Support System requires virtually no maintenance to operate under extreme conditions for thousands of hours. However, to achieve the best bar life and avoid the need for unscheduled bar change-outs, the following maintenance practices should be adopted.

### ***Routine Maintenance***

The Systems should be inspected for bar wear after one month of operation, and again after three months.

Subsequent inspection frequency can be determined after the wear rate is assessed at these initial inspections.

## **SECTION 7 – TROUBLE SHOOTING**

If the routine maintenance and scheduled bar change-outs are performed as per ***Routine Maintenance***, non routine maintenance should be virtually non-existent. However the following situations are possible.

<b>SYMPTOM</b>	<b>POSSIBLE CAUSE</b>	<b>REMEDY</b>
Smoke or burning rubber smell.	1. Seized idler. 2. Over adjusted or damaged skirting.	- Replace idler - Replace or adjust skirting rubber.
Material spillage under skirts.	1. Skirting rubber not adjusted or failed. 2. Guardaseal Bars are worn.	- Adjust or replace skirting. - Adjust or turn Bars over or replace.

### ***System Disassembly Procedure***

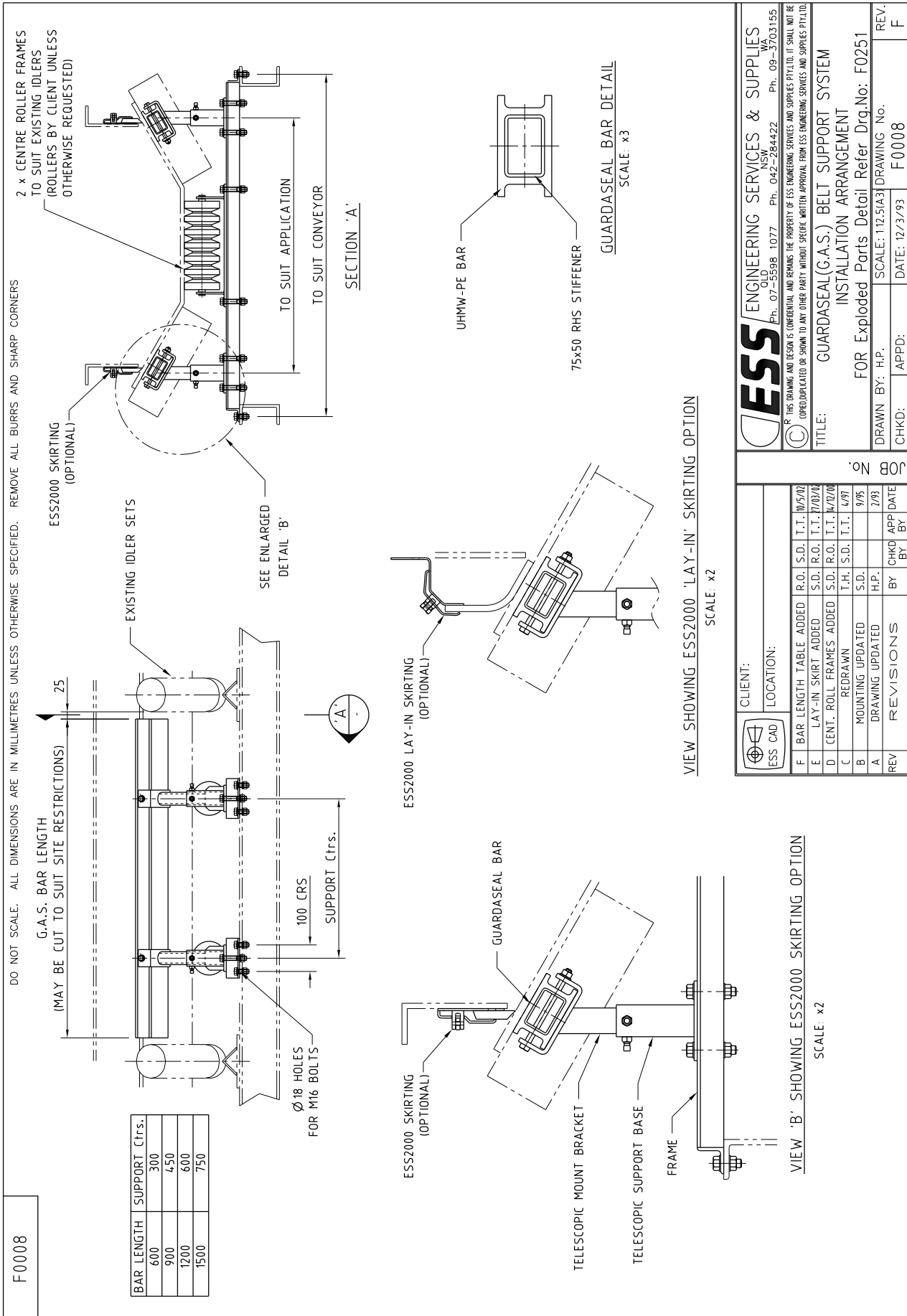
The disassembly of an **ESS** Guardaseal Support System is a simple process.

1. Loosen the lock screws on the telescoping supports.
2. Slide the assembly from the support frame.
3. Loosen the lock screws on the bars.
4. Slide the Bars from the supports.
5. Inspect the bars for wear or damage.
6. Rotate the bars if necessary or replace them.
7. Repeat for the other side.

### ***System Re-assembly***

Re-assemble the System in reverse order of disassembly,

# SECTION 8 – INSTALLATION ARRANGEMENT DRAWING



# SECTION 9- EXPLODED PARTS LISTS

**F0251**

G.A.S. BELT SUPPORT ASSEMBLIES COMPLETE	
BAR LENGTH	PART No:
600	45081xxx
900	45082xxx
1200	45083xxx
1500	45085xxx

**NOTE:**  
A GUARDBELT-SEAL APPLICATION DATA FORM AND AN IDLER DATASHEET WILL NEED TO BE FILLED OUT BEFORE MANUFACTURING TAKES PLACE.  
CRADLES ARE DESIGNED FOR INDIVIDUAL APPLICATIONS PLEASE QUOTE ORIGINAL ORDER No. WHEN ORDERING SPARE PARTS.

DO NOT SCALE. ALL DIMENSIONS ARE IN MILLIMETRES UNLESS OTHERWISE SPECIFIED. REMOVE ALL BURRS AND SHARP CORNERS

**SUFFIX NOTES**  
GENERAL  
S = STAINLESS STEEL  
F = FRAS (FIRE RETARDANT - ANTI STATIC)  
FASTENERS / FITTINGS  
S = S.S. (STAINLESS STEEL)  
Z = ZINC PLATED

**PART NO. NOTES**  
PART NO'S FOLLOWED BY 'xxx' INDICATE THAT THE PART IS AVAILABLE IN ALL STANDARD BELT WIDTHS. SUBSTITUTE 'xxx' WITH BELT WIDTH MEASURED IN CM.  
ALL STANDARD BELT WIDTHS: - 600, 900, 1200 & 1500  
2. ITEM 5, G.A.S. BARS COME IN 4 STANDARD LENGTHS - 600, 900, 1200 & 1500  
SUBSTITUTE 'yyy' IN P/No. WITH THE BAR LENGTH IN CM.  
I.E. 1200 LONG G.A.S. BAR = P/No:46027120

ITEM	QTY	DESCRIPTION	MATERIAL	PART No:
1	2	BASE	M.S. GALV	46040xxx
2	4	TELESCOPIC SUPPORT BASE	M.S.-Z.P.	46010005
3	4	TELESCOPIC SUPPORT BAR	M.S.-Z.P.	46010010
4	2	CENTRE IDLER FRAME - NO IDLER	M.S. GALV	46030005
5	2	GUARDBELT BAR COMP W/O HOLES	M.S.-Z.P./UHMW-PE	46027100
6	8	SCREW M16X50 HEX	M.S.-Z.P.	02315640Z
7	12	BOLT M16X90 HEX	M.S.-Z.P.	02303640Z
8	8	NUT M16 HEX	M.S.-Z.P.	02311616Z
9	12	NUT M16 NYLOC	M.S.-Z.P.	02311618Z
10	28	WASHER M16	M.S.-Z.P.	02319616Z
11	12	WASHER M16 H/D	M.S.-Z.P.	02319617Z
12	8	WASHER M16 SPRING	M.S.-Z.P.	02319618Z
13	8	SCREW M12X28 HEX SET POINTED 304SS	SS	02315529S
14	4	BOLT 1/2" BSW X 6 1/2" HEX	M.S.-Z.P.	02304385Z
15	4	NUT 1/2" BSW NYLOC	M.S.-Z.P.	02312314Z
16	4	WASHER 1/2" X 1 1/4" DIA HD	M.S.-Z.P.	02320312Z
17	2	IDLER (BY CLIENT)	HDPE	02650440P
18	4	MAINFRAME PLUG TO SUIT 75X50RHS	HDPE	02650440P

REV	REVISIONS	REF DOCS	CHKD BY	APPD BY	DATE	SCALE	DRAWING No.	REV.
A	ISSUED FOR INFORMATION				10/5/02		F0251	C
B	REVISED							
C	UPDATE AS PER REQUEST							

**CLIENT:** \_\_\_\_\_  
**LOCATION:** \_\_\_\_\_

**ESS ENGINEERING SERVICES & SUPPLIES**  
CUSTOMER SERVICE No. 1800 074446

**THIS DRAWING AND DESIGN IS CONFIDENTIAL AND REMAINS THE PROPERTY OF ESS ENGINEERING SERVICES AND SUPPLIES PTY LTD. IT SHALL NOT BE REPRODUCED OR SHOWN TO ANY OTHER PARTY WITHOUT SPECIFIC WRITTEN APPROVAL FROM ESS ENGINEERING SERVICES AND SUPPLIES PTY LTD.**

**TITLE:** GUARDBELT (G.A.S.) BELT SUPPORT CRADLE  
**EXPLODED PARTS DETAIL**

**JOB No.** \_\_\_\_\_

**SECTION 10**

**FINAL CHECKLIST**

Site: \_\_\_\_\_ Number: \_\_\_\_\_ Date: \_\_\_\_\_

Site Equipment No./Location: \_\_\_\_\_ Site Contact: \_\_\_\_\_

Completed By: \_\_\_\_\_ **(Circle Yes or No Below)**

**1. Was equipment to ESS Specification? \_\_\_\_\_ Yes/No**

**Drawing No. Ref: \_\_\_\_\_ Attached? Yes/No**

If No, WHY \_\_\_\_\_  
\_\_\_\_\_

**Will this affect performance? Yes/No**

If Yes, WHY \_\_\_\_\_  
\_\_\_\_\_

**2. Was this a standard  service  inspection  installation? Yes/No**

If No, WHY \_\_\_\_\_  
\_\_\_\_\_

**3. Was work carried out as per procedure and JSA? Yes/No**

If No, WHY \_\_\_\_\_  
\_\_\_\_\_

**4. Is equipment fit for commissioning? Yes/No**

If No, WHY \_\_\_\_\_  
\_\_\_\_\_

**5. Was a final inspection carried out while plant was running? Yes/No**

If No, WHY \_\_\_\_\_  
\_\_\_\_\_

**6. Has anything changed from previous service / inspection / installation? Yes/No**

If Yes, WHAT \_\_\_\_\_  
\_\_\_\_\_

**7. Is equipment performance to Client expectations? Yes/No**

If No, WHY \_\_\_\_\_  
\_\_\_\_\_

**ESS Signature: \_\_\_\_\_ Client Signature: \_\_\_\_\_**