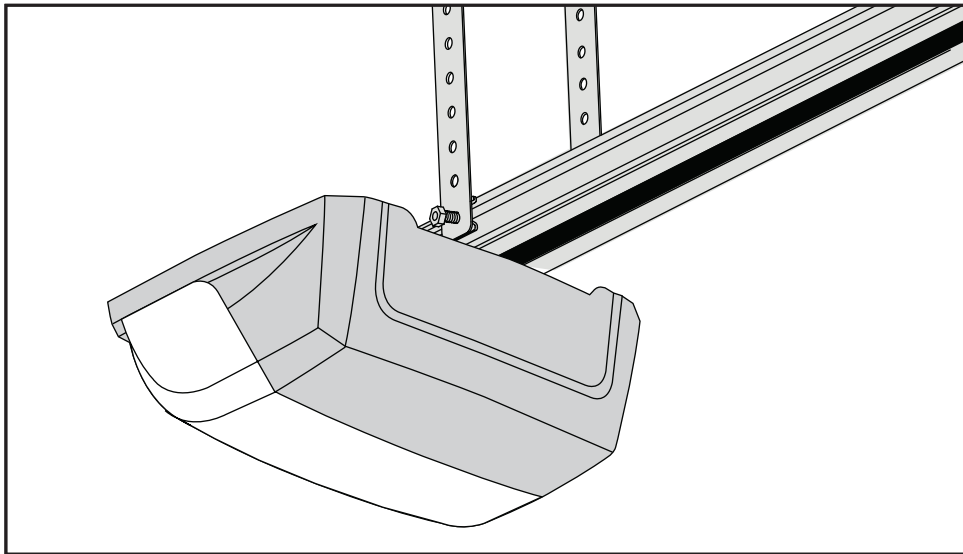


HOMENTRY

www.homentry.com.au



HE60ANZ Garage Door Opener Installation and Operating Instructions

Owners Copy: Please keep these instructions for future reference



This manual contains IMPORTANT SAFETY information.
DO NOT PROCEED WITH THE INSTALLATION BEFORE READING THOROUGHLY.



N2966

START BY READING THESE IMPORTANT SAFETY INSTRUCTIONS

WARNING

- Failure to comply with the following instructions may result in serious personal injury or property damage.
- Read and follow all instructions carefully.
- The garage door opener is designed and tested to offer safe service provided it is installed and operated in strict accordance with the instructions in this manual.



These safety alert symbols mean **WARNING** : A possible risk to personal safety or property damage exists.



Keep garage door balanced. Do not let the garage door opener compensate for a binding or sticking garage door. Sticking, binding or unbalanced doors must be repaired before installing this opener.



Do not wear rings, watches or loose clothing while installing or servicing a garage door opener.



Frequently examine the door installation, in particular cable, springs and mountings for signs of wear, damage or imbalance. Do not use if repair or adjustment is needed since springs and hardware are under extreme tension and a fault can cause serious personal injury.



To avoid serious personal injury from entanglement, **remove all ropes, chains and locks connected to the garage door** before installing the door opener.



Installation and wiring must be in compliance with your local building and electrical codes.



The safety reverse system test is very important. Your garage door **MUST** reverse on contact with a 40mm obstacle placed on the floor. Failure to properly adjust the opener may result in serious personal injury from a closing garage door. **Repeat the test once a month and make any necessary adjustments.**



This opener should not be installed in a damp or wet space exposed to weather.



This appliance is not intended for use by persons (including children) with reduced physical, sensory or mental capabilities, or lack of experience and knowledge, unless they have been given supervision or instruction concerning use of the appliance by a person responsible for their safety.



The Protector System™ must be used for all installations where the closing force as measured on the bottom of the door is over 400N (40kgf). Excessive force will interfere with the proper operation of the Safety Reverse System or damage the garage door.



After installation, ensure that the parts of the door do not extend over public footpaths or roads.



Install the wireless wall control (or any additional wall control) **in a location where the garage door is visible, at a height of at least 1.5m and out of the reach of children. Do not allow children to operate push button(s) or transmitter(s).** Serious personal injury from a closing garage door may result from misuse of the opener.



Permanently fasten the Warning Labels in Prominent Places, adjacent to Wall Controls and manual release mechanisms as a reminder of safe operating procedures.



Activate opener only when the door is in full view, free of obstructions and the opener is properly adjusted. No one should enter or leave the garage while the door is in motion.



Do not allow children to play near the door, or door controls.



Disconnect electric power to the garage door opener before making repairs or removing covers.

KEEP THESE INSTRUCTIONS

NOTE: If your garage has no service entrance door, a AML1702 outside quick release must be installed. This accessory allows manual operation of the garage door from outside in case of power failure.

CONTENTS	PAGE
SAFETY INSTRUCTIONS	1
DOOR TYPES	2
TOOLS REQUIRED	2
HARDWARE PROVIDED	2
BEFORE YOU BEGIN	3
COMPLETED INSTALLATION	3
ASSEMBLY	3-5
INSTALLATION	5-8
CONNECT ELECTRIC POWER	8
ADJUSTMENT	9
INSTALL PROTECTOR SYSTEM	10

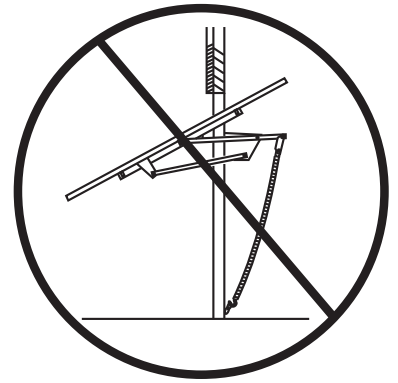
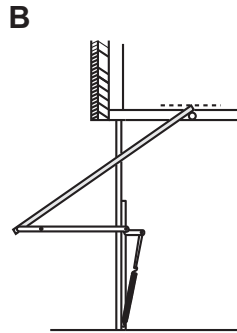
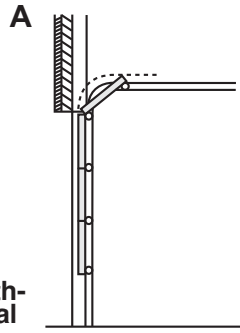
WIRELESS PROGRAMMING	11-12
INSTALL DOOR CONTROL	13
ACCESSORIES	14
REPLACEMENT PARTS	14
OPERATION OF YOUR OPENER	15
CARE OF YOUR OPENER	15
MAINTAENANCE OF YOUR OPENER ...	15
TROUBLE SHOOTING	16
SPECIFICATIONS	16
WARRANTY	17

1 DOOR TYPES

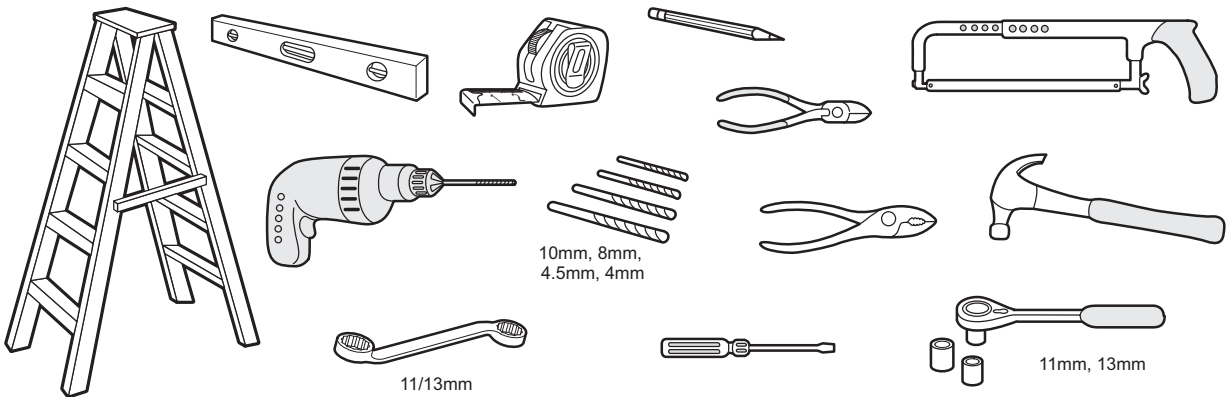
- A. Sectional Door with Curved Track
- B. One-Piece Door with Horizontal Track Only

Max door height : 2.125m
Max door width : 3.5m

NOTE: Unit will not work with One-Piece Doors without Horizontal and Vertical Tracks, Double-Wing Doors, or Canopy Doors.



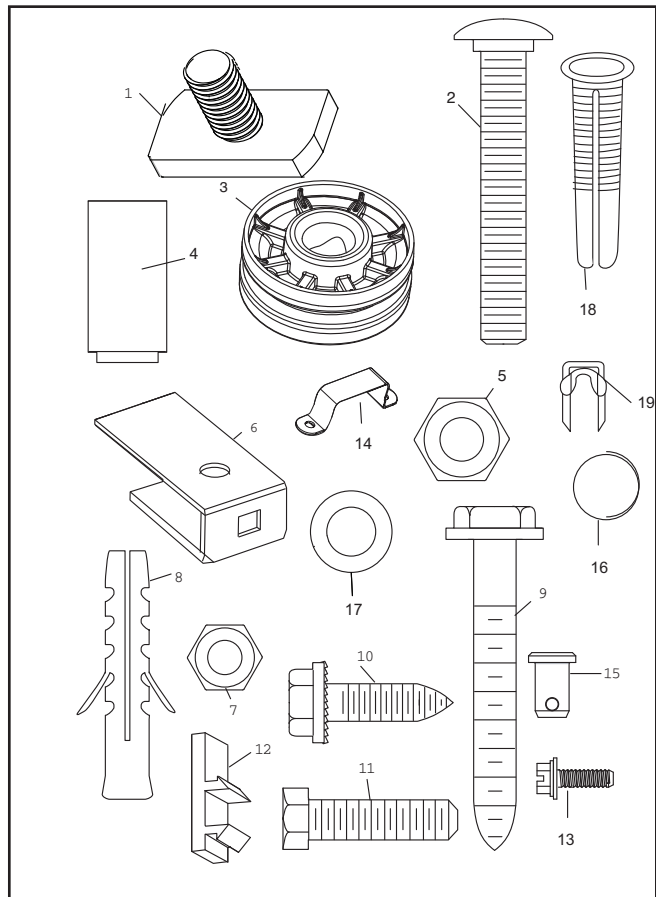
2 TOOLS REQUIRED



3 HARDWARE PROVIDED

ASSEMBLY HARDWARE

- 1. Square head screws (4)
- 2. 8mm carriage bolt (1)
- 3. Cable pulley (1)
- 4. Pin (1)
- 5. 8mm lock nut (1)
- 6. Pulley bracket (1)
- 7. 6mm nut (8)
- 8. Concrete anchor (4)
- 9. 6mm lag bolt (4)
- 10. 6mm self-threading screw (4)
- 11. 6mm hex bolt (4)
- 12. Wire clips (3)
- 13. Hex screws (2)
- 14. C-rail bracket (1)
- 15. Clevis pin (2)
- 16. Ring fastener (2)
- 17. Flat washer (1)
- 18. Anchor (2)
- 19. Insulated staples (10)



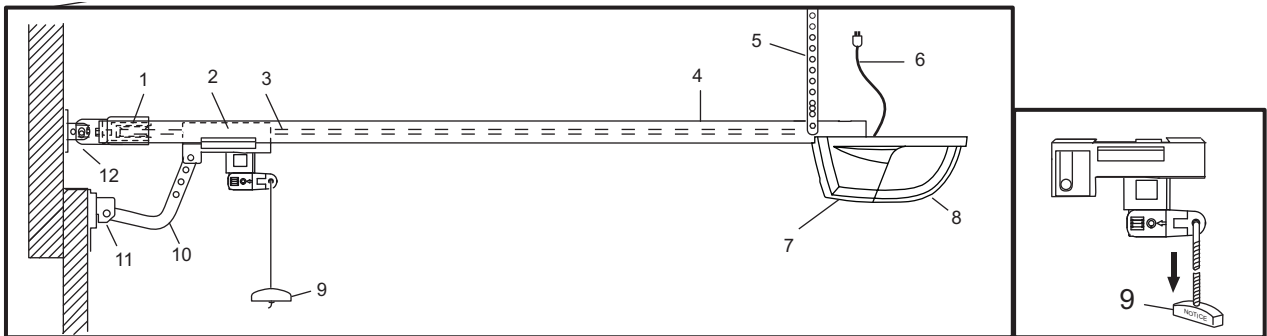
BEFORE YOU BEGIN

1. Look at the wall or ceiling above the garage door. The header bracket **must** be securely fastened to structural supports.
2. Do you have a finished ceiling in your garage? If so, a support bracket and additional fastening hardware (not supplied) may be required.
3. Do you have an access door in addition to the garage door? If not, Model 1702AML outside quick release accessory is required.

4 COMPLETED INSTALLATION - ALL PARTS LISTED ARE SUPPLIED IN THE CARTON.

As you proceed with the assembly, installation and adjustment procedures in this manual, you may find it helpful to refer back to this illustration of a completed installation.

- | | |
|--------------------------|----------------------------------|
| (1) Cable pulley bracket | (8) Light lens |
| (2) Trolley | (9) Manual release rope & handle |
| (3) Chain/cable assembly | (10) Door arm |
| (4) Rail | (11) Door bracket |
| (5) Hanging bracket | (12) Header bracket |
| (6) Power cord | |
| (7) Opener | |



ASSEMBLY SECTION

5 ASSEMBLE RAIL

Place rail pieces (1) on a flat surface for assembly.

Take special note of the raised line on the rail pieces (4) these lines **MUST** line up in order for the rail to fit together properly.

All three rail sections are interchangeable.

Slide rail braces (2) into slots on the sides of rail.

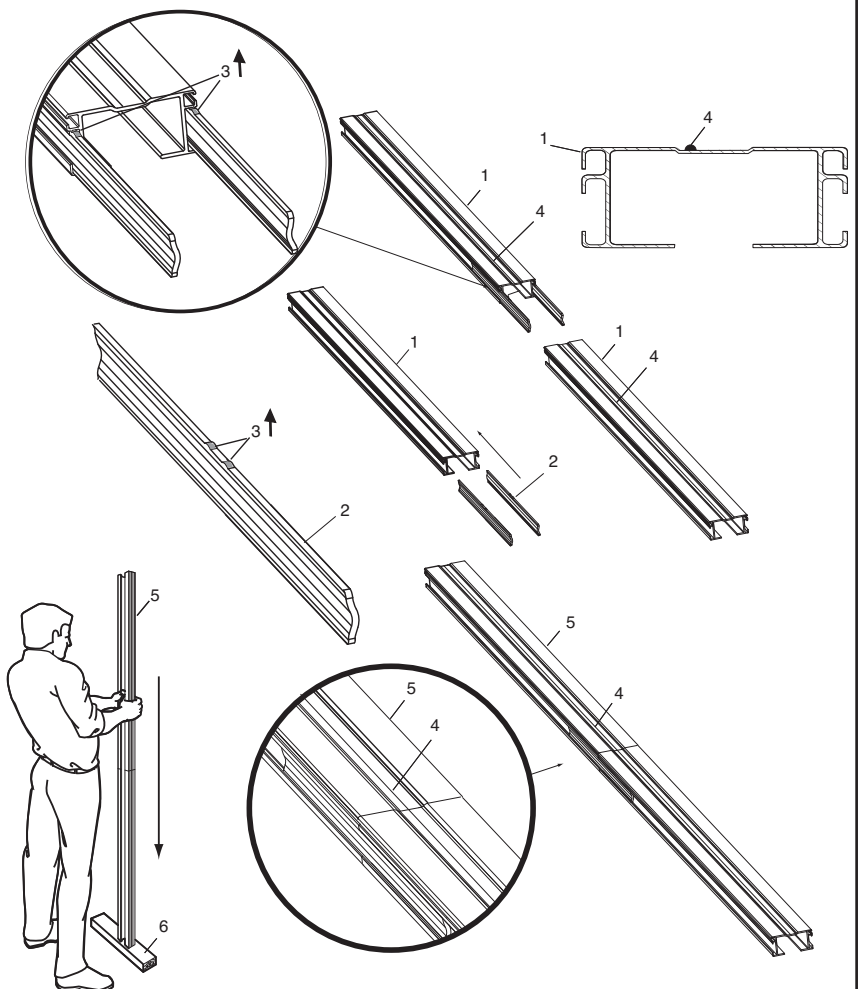
Make sure small tabs on rail braces (3) are up against top lip of rail.

Connect rail by sliding other end of braces into next rail.

Be sure the raised lines that run down rail sections (4) line up.

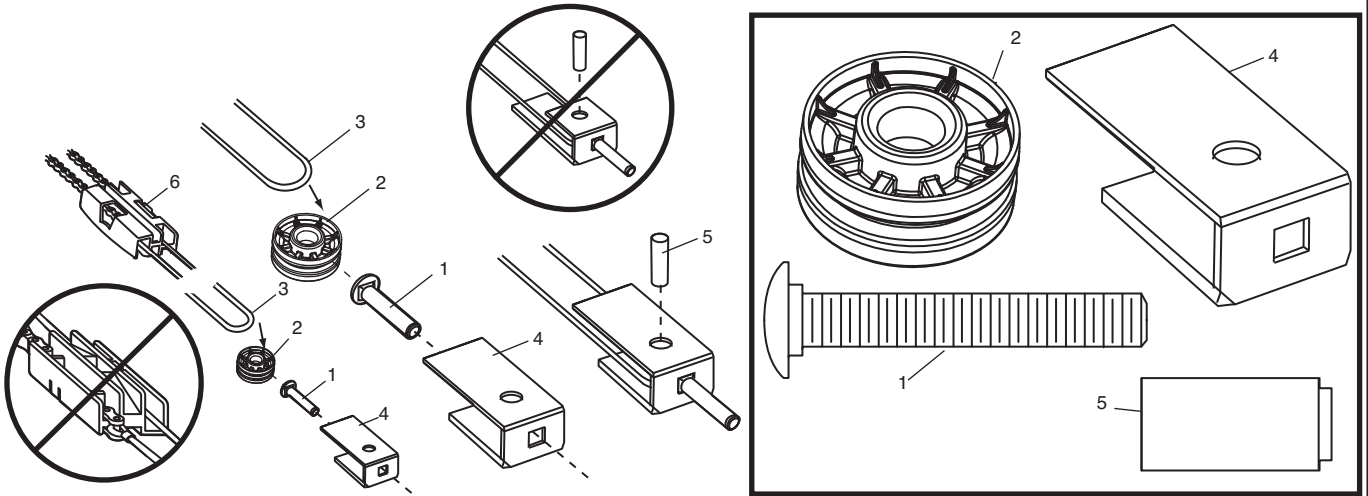
Tap rail assembly (5) on a piece of wood (6) until rail sections are flush.

Repeat for final rail section.



6 ASSEMBLE CABLE PULLEY BRACKET

Insert carriage bolt (1) through square hole in cable pulley bracket (4). Remove chain/cable assembly (3) from carton. Wrap cable around cable pulley (2) and insert pulley into bracket (**NOTE: Make sure the bracket is assembled in position shown**). Slide pin (5) through holes in cable pulley bracket and cable pulley. **NOTE: Trolley with magnet (6) MUST be installed in the position shown.**

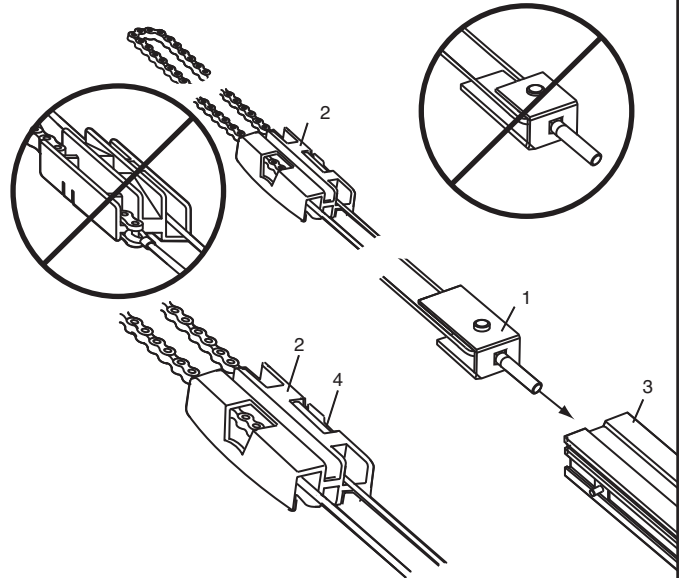


7 INSERT CHAIN/CABLE INTO RAIL

Slide cable pulley bracket (1) into rail assembly (3), be sure to insert cable pulley bracket as shown.

Push cable pulley bracket toward front of rail and slide inner trolley (2) into rail assembly.

Magnet (4) MUST be installed in position shown or unit will not function properly.

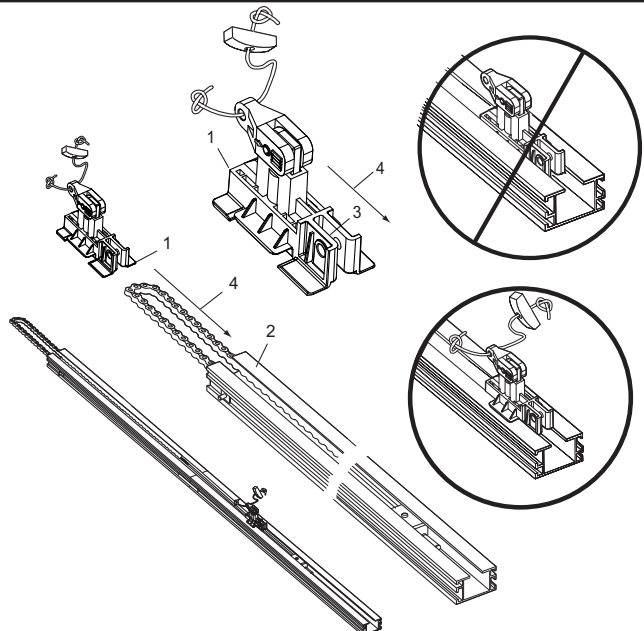


8 ATTACH TROLLEY TO RAIL

Turn rail assembly over.

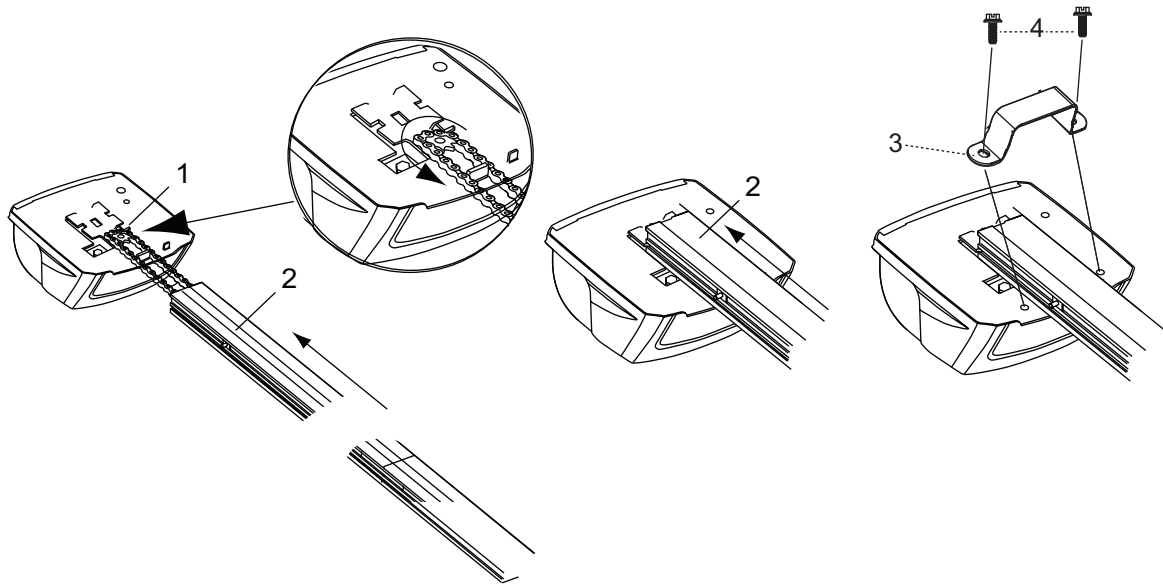
Slide outer trolley (1) into rail assembly (2), be sure the end with door arm hole (3) is heading in direction of door (4).

Slide outer trolley down rail until it engages with inner trolley.



9 ATTACH RAIL TO UNIT

Turn rail assembly over and wrap chain around drive sprocket (1). Slide rail assembly (2) toward unit and into slots on top of unit. Attach C-Bracket (3) on the rail and secure with screws (4) as shown. Push cable pulley bracket forward making chain tight on sprocket. Chain MUST engage teeth on drive sprocket.



10 ATTACH HEADER BRACKET

Turn rail and unit assembly over. Slide cable pulley bracket (2) toward front end of rail (3).

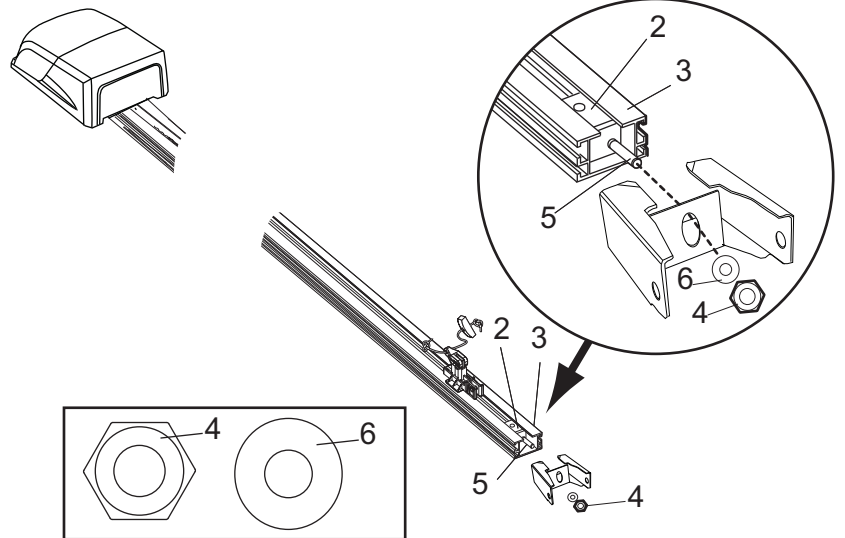
Be careful chain does not come off drive sprocket on unit or become twisted.

Slide carriage bolt (5) into header bracket (1).

Secure with lock nut (4).

Tighten nut until chain does not droop below rail.

Do NOT over tighten.



INSTALLATION SECTION



Wear protective goggles when working overhead to protect your eyes from injury.

Disengage all existing garage door locks to avoid damage to the garage door.

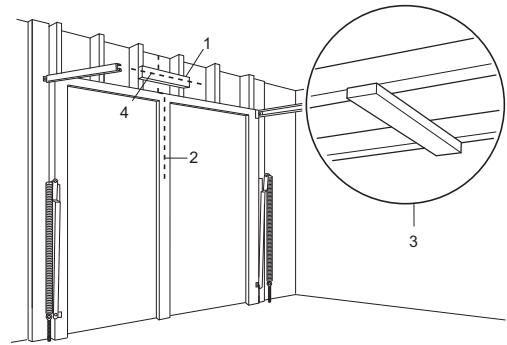
To avoid serious personal injury from entanglement, remove all ropes connected to the garage door before installing the opener.

It is recommended that the opener be installed 2.1m (7 feet) or more above the floor where space permits.

11 POSITION THE HEADER BRACKET

The header bracket must be rigidly fastened to a structural support of the garage. Reinforce the wall or ceiling with a 40mm (1-1/2") board if necessary. Failure to comply may result in improper operation of safety reverse system.

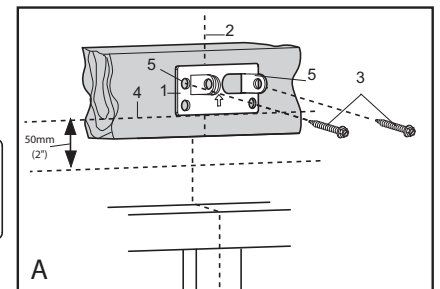
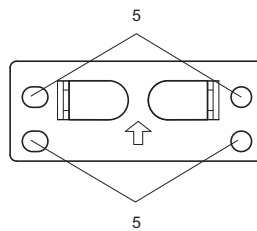
You can attach the header bracket either to the header wall (1) or to the ceiling (3). Follow the instructions which will work best for your particular requirements. With the door closed, mark the vertical centreline (2) of the garage door. Extend line onto header wall above the door. Open door to highest point of travel. Draw an intersecting horizontal line (4) on header wall 50mm or 200mm above high point to provide travel clearance for top edge of the door, height depends on door type (refer section 15).



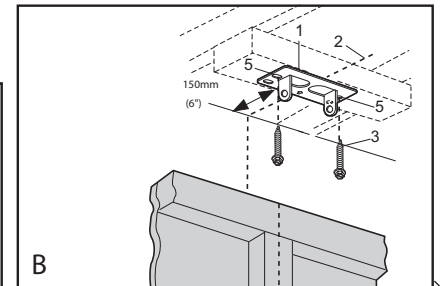
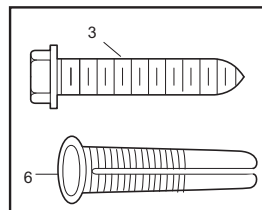
12 INSTALL THE HEADER BRACKET

NOTE: Refer to vertical centre and horizontal lines created in step 11 for proper placement of header bracket.

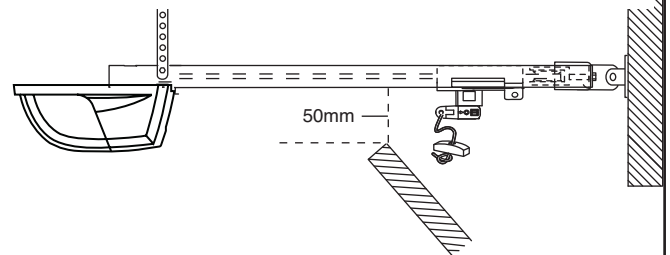
A. Wall Mount: Centre the header bracket (1) on the vertical centre line (2) with the bottom edge of the header bracket on the horizontal line (4) (with the arrow pointing toward the ceiling). Mark all of the header bracket holes (5). Drill 4.5 mm (3/16") pilot holes and fasten the header bracket with wood screws (3).



B. Ceiling Mount: Extend vertical centre line (2) onto the ceiling. Centre the header bracket (1) on the vertical mark no more than 150 mm (6") from the opener. Make sure the arrow is pointing toward the opener. Mark all of the header bracket holes (5). Drill 4.5 mm (3/16") pilot holes and fasten the header bracket with wood screws (3). For concrete ceiling mount, use concrete anchors (6) provided.



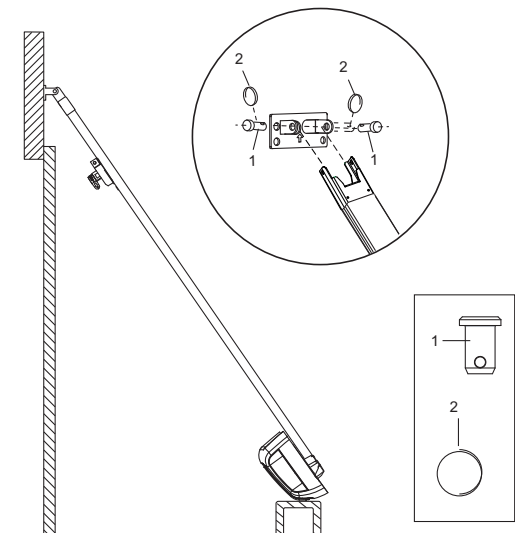
Clearance between highest point of travel and rail should not exceed 50mm and can be zero when clearance between door and ceiling is only 30mm.



13 ATTACH RAIL TO HEADER BRACKET

Position the opener on the floor below the mounting bracket using some packaging material to protect the unit's cover. Raise the rail the holes in the header sleeve and the holes of the header to align bracket. Use the clevis pin (1) provided to join the two pieces, then insert the fastening ring (2) to secure in place.

Note: To enable the rail to clear sectional door springs, it may be necessary to lift the opener onto a temporary support. The opener must be secured in place by means of a support or by being held by another person.



14 FASTEN DOOR BRACKET

Sectional and One-Piece Door Installation

Procedure:

Door bracket (1) has left and right side fastening holes. If your installation requires top and bottom fastening holes use both the door bracket and door bracket plate (2) as shown.

1. Centre door bracket (with or without door bracket plate, as required) at the top inside face of door as shown. Mark holes.

A. One-piece doors

Locate bracket at inside face of the door 0-100mm down.

B. Sectional door

150 - 250mm below the top of the door.

2. Fasten bracket to the door using the appropriate screws.

A. Wooden doors

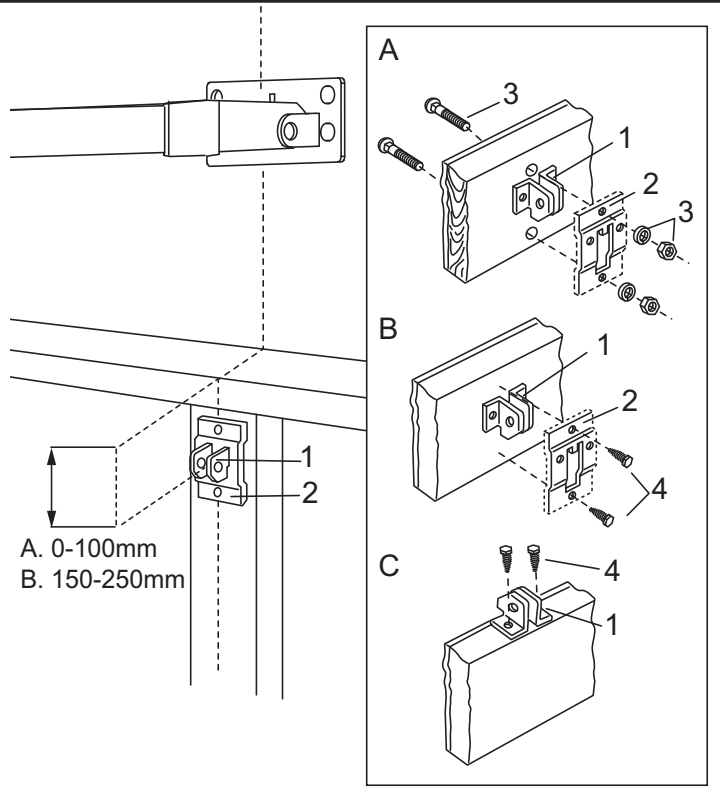
Drill 8mm holes (5/16") and fasten the door bracket with nut, lock washer, and carriage bolt (3).

B. Sheet metal doors

Fasten with wood screws (4).

C. One-piece door option

Fasten with wood screws (4).



15 HANG OPENER

Bend hanging brackets (1) so they are flat against ceiling.

Measure distance from header bracket to ceiling mounting bracket bolts.

Mark length on ceiling starting at the header wall, along this point is where the unit will be mounted.

Lift door to full open position, rest opener on door.

Insert square head screws (A) into rail assembly (B) approximately 120mm from end of rail near motor unit.

Slide hanging brackets on to square head screws and secure brackets with nuts (5).

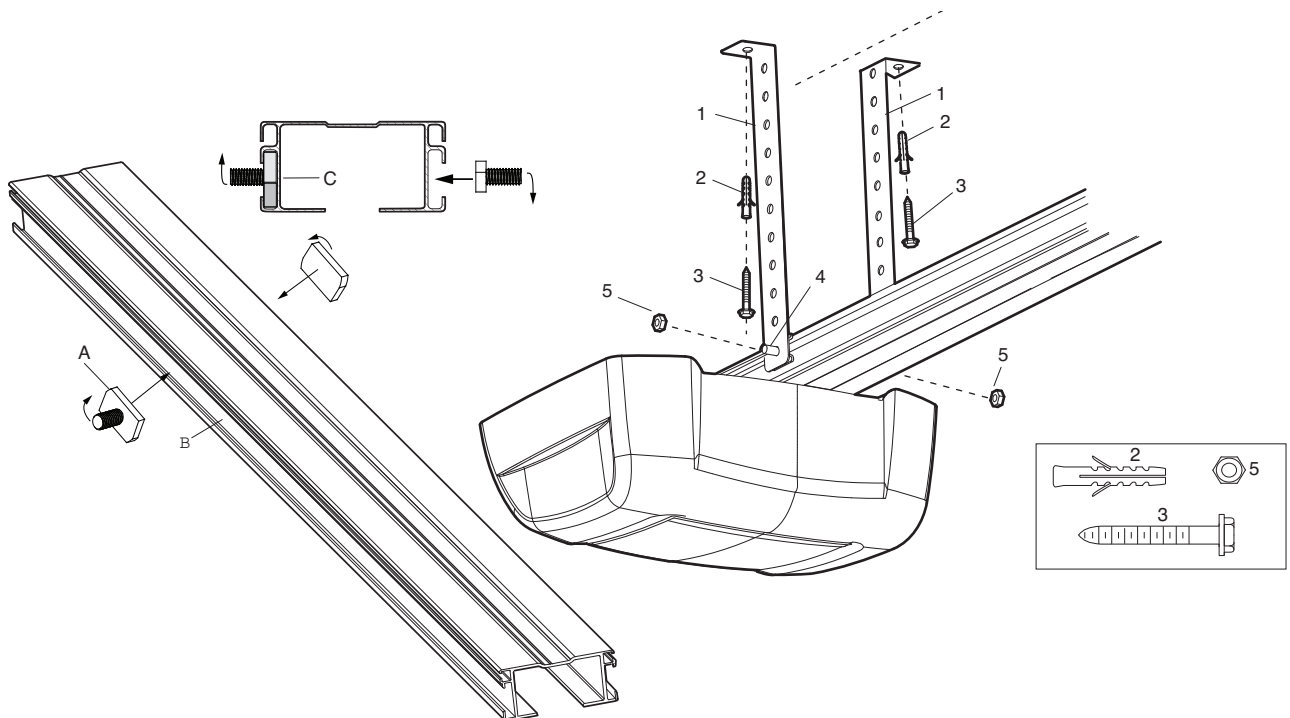
In this process the square head screws hook into slots on the sides of rail by turning 90° (C).

For concrete ceilings, drill 8mm pilot holes into ceiling and insert concrete anchors (2).

Secure hanging brackets to ceiling with lag screws (3).

For wood ceilings, drill 4mm pilot holes and secure with lag screws (3).

Optional: A second set of hanging brackets is recommended when door is very heavy. The hanging brackets should be located in the first third to the centre of the rail upwards the most during the travel.



16 ATTACH EMERGENCY RELEASE ROPE & HANDLE

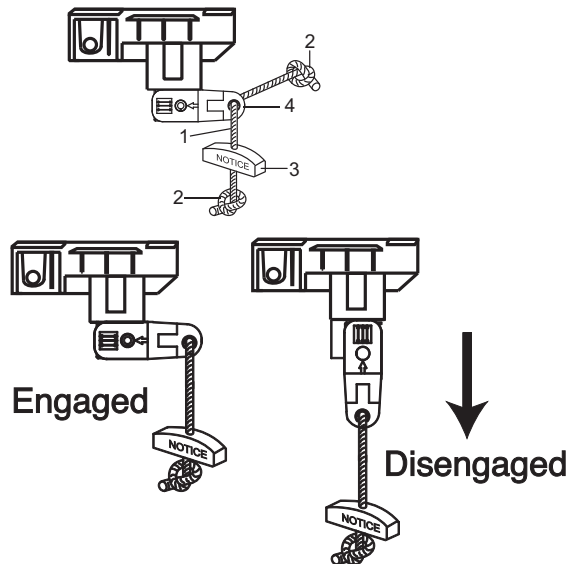
Thread one end of rope (1) through hole in top of red handle so "NOTICE" reads right side up as shown (3). Secure with an overhand knot (2). Knot should be at least 25mm (1") from end of the rope to prevent slipping.

Thread other end of rope through hole in release arm of the outer trolley (4). Adjust rope length so that handle is less than 1.8m (6 feet) above the floor. Secure with an overhand knot.

NOTE: If it is necessary to cut rope, heat seal cut end to prevent fraying.

Door should be released in the closed position if possible.

To Release the trolley *PULL* down on the red handle.
DO NOT USE THE HANDLE TO OPEN OR CLOSE THE DOOR.



DO NOT DISENGAGE THE OPENER TO MANUAL OPERATION WITH CHILDREN, PERSONS OR OTHER OBJECTS INCLUDING MOTOR VEHICLES WITHIN THE DOORWAY: (The door is under significant tension and if the door has developed a fault or incorrect tension, it may be unsafe and may fall rapidly).

17 CONNECT DOOR ARM TO TROLLEY

A. Preferred Installation:

Disconnect trolley by pulling on the red handle and slide towards door. With door closed connect straight door arm (5) to trolley (4) with bolt (3), secure with nut (1). Connect curved door arm (2) to door bracket with bolt (3) secure with nut (1). Align straight and curved door arms with a 2 hole overlap connect with bolt (3), secure with nut (1). If straight door arm (5) is too long, cut the end of the door arm.

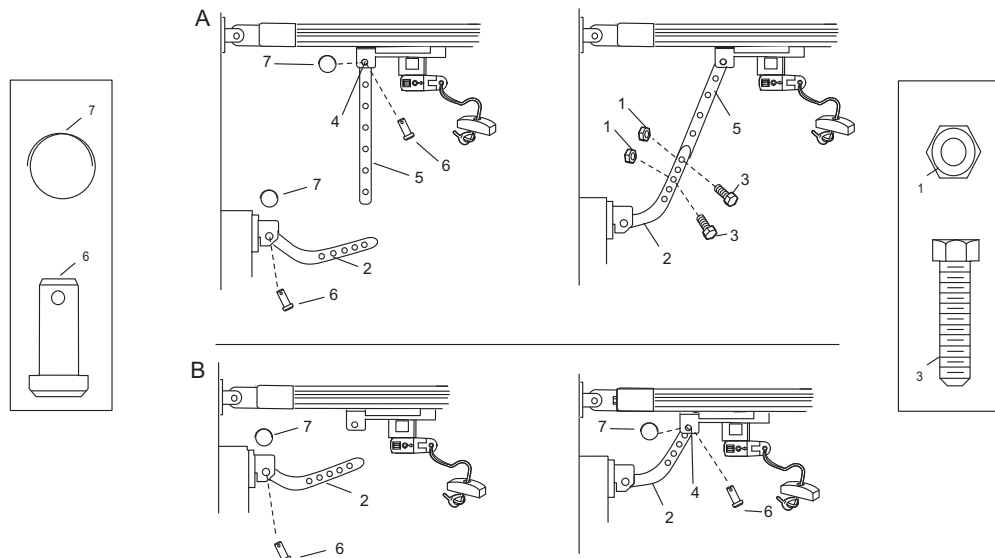
B. Where extra travel distance is required:

With door closed connect curved door arm (2) to door bracket with bolt (3), secure with nut (1). Lift curved door arm (2) to meet trolley, connect door arm to trolley with bolt (3), secure with nut (1).



Connect Electric Power

To avoid installation difficulties, do not run the garage door opener until instructed to do so. Plug the opener into electric outlets as specified by local wiring codes. The opener light will turn on when power is connected and remain on for 2-1/2 minutes.



18 ATTACH LIMIT SWITCHES

NOTE: The limits must be installed as shown. If installed incorrectly the unit will not function properly.

Close garage door by hand. Determine the position of the close limit switch (1) (long wire) by aligning the centre of trolley and the centre of the limit switch. The limit switches are actuated by a magnet in the inner trolley.

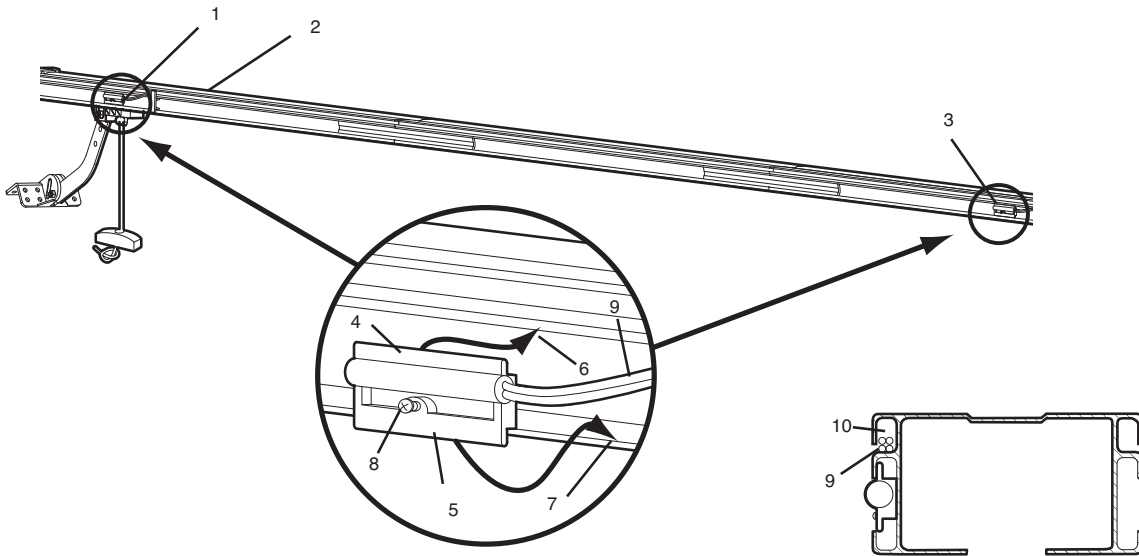
Insert bottom tab (5) of limit switch (1) into bottom lip of rail (7). Insert top tab (4) under top lip of rail (6). Lift limit assembly against top lip of rail and tighten screw (8) to secure close limit switch.

Open garage door by hand to the full open position. Pull red handle to disengage door past inner trolley. Determine the position of the open limit switch (3) (short wire) by aligning the centre of the trolley and the centre of the limit switch.

Insert bottom tab (5) of limit switch (1) into bottom lip of rail (7). Insert top tab (4) under top lip of rail (6). Lift limit assembly against top lip of rail and tighten screw (8) to secure open limit switch.

Insert wires for limit switch (9) into top channel of rail (10). Secure wires with wire clip. the wires must be secured so they do not interfere with the travel of the trolley. Re-engage trolley then activate transmitter, the opener will operate and reconnect to the door automatically.

Run opener 2 full travel cycles. If the door reverses in mid travel go to setting the force section. Adjust limit switches as necessary to fully open and close the door without reversing.



19 SETTING THE FORCE

The force is programmed to operate most doors, however, if limits are not able to be set, or the door reverses during normal operation follow this procedure:

Locate the program button (1) on the left side panel of unit (2). Push the program button twice to enter unit into auto-force adjustment mode.

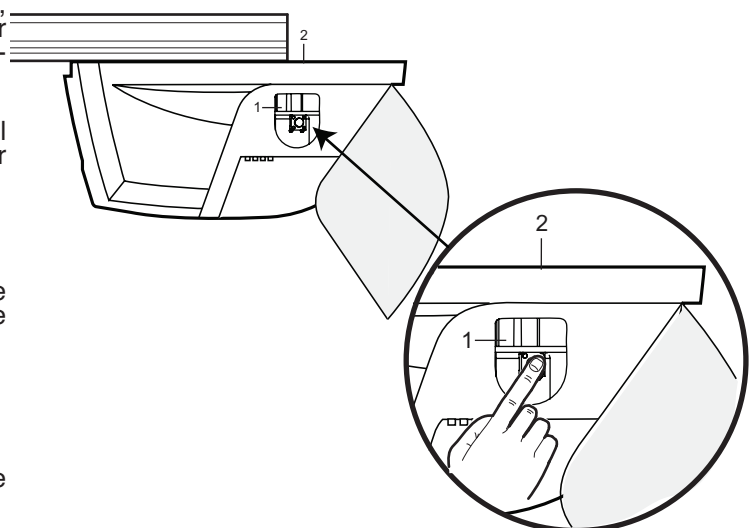
The green LED will flash slowly.

Activate unit with remote and run the unit to the open limit. Activate unit again to run the unit to the closed limit.

The door must travel through a complete cycle up and down in order for the force to be set properly.

If the unit stops before it reaches the open or close limit repeat the process.

The green LED will stop flashing when the force has been learned



20 TEST THE SAFETY REVERSE SYSTEM

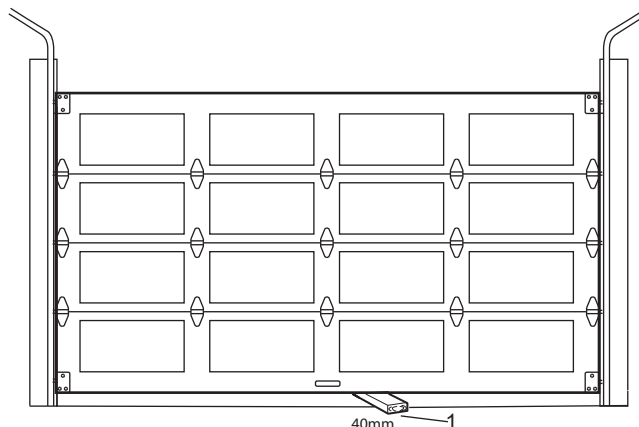
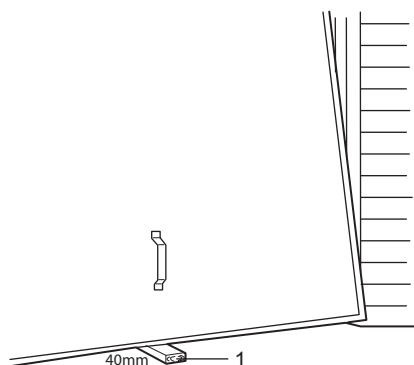


The safety reverse system test is important. Garage door must reverse on contact with a 40mm obstacle laid flat on the floor. Failure to properly adjust opener may result in serious personal injury from a closing garage door. Repeat test once a month and adjust as needed.

Procedure: Place a 40mm obstacle (1) laid flat on the floor under the garage door. Operate the door in the **down** direction. The door **must** reverse on the obstruction, if the door **stops** on the obstruction, it is not traveling far enough in the **down** direction. Move Close Limit closer to door

When the door reverses on the 40mm obstacle, remove the obstruction and run the opener through a complete travel cycle. Door **must not** reverse in closed position. If it does, adjust limit and repeat safety reverse test.

KEEP THESE INSTRUCTIONS



21 INSTALL THE PROTECTOR SYSTEM™

(See accessories)

Install this accessory for all installations on canopy doors, one-piece door with horizontal and vertical track, doors over 2.5m and when the closing force as measured on the bottom of the door is over 400N (40kg).

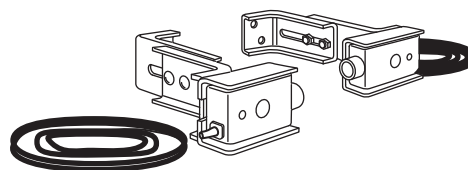
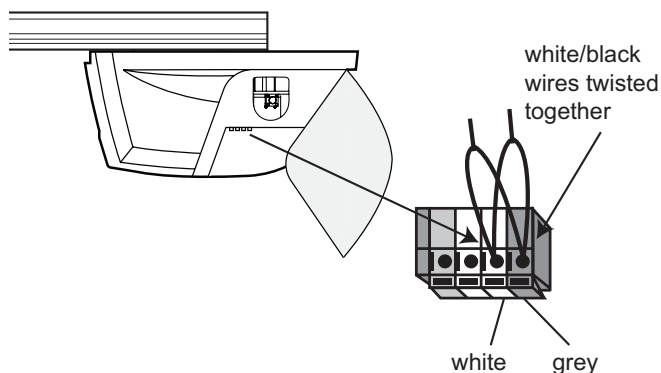
After opener has been installed and adjusted, **The Protector System™** accessory can be installed. Instructions are included with this accessory.

The Protector System™ provides an additional measure of safety against a small child being caught under a garage door. It uses an invisible beam which, when broken by an obstruction, causes a closing door to open and prevents an open door from closing and is **strongly recommended for homeowners with young children.**

Note: The opener will automatically detect the Protector System™ when it is installed and operating for 5 minutes (during this time the beams must remain unobstructed). The opener will not close unless the beams are aligned.

Connecting the Protector System

Locate the terminals on the front of the opener. Strip all wires back about 10mm then twist the two white wires and the two white/black wires together. Trim the twisted wires to approximately 6mm. Use a small screwdriver or pen to hold down the spring terminals, insert the white/black wires into the grey terminal (4), then terminate the white (only) wires into the white terminal (3).



SAFETY FIRST!

Whilst Chamberlain have engineered safety features into your garage door opener, we urge you to consider fitting IR Beams to your new garage door opener. In many countries these devices are compulsory to prevent serious injury or property damage. For your own peace of mind and the safety of others please install this inexpensive safety device.

22 WIRELESS PROGRAMMING



Activate the opener only when door is in full view, free of obstruction and properly adjusted. No one should enter or leave garage while door is in motion. Do not allow children to operate push button(s) or remote(s). Do not allow children to play near the door

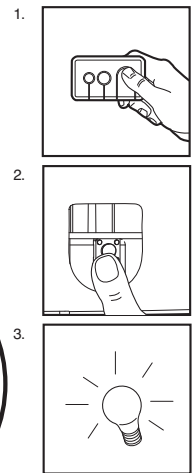
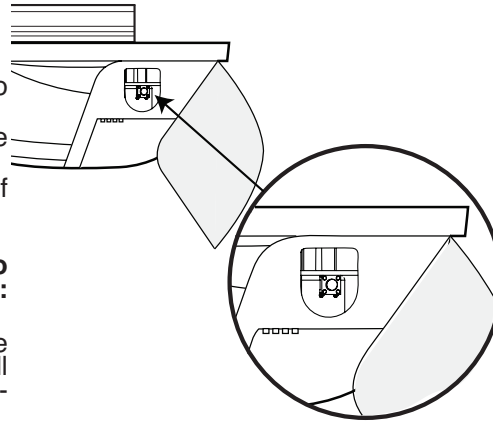
Your garage door opener receiver and transmitter are set to a matching code. If you purchase additional transmitters, the garage door opener must be programmed to accept the new remote code.

To program receiver to match additional remote control codes:

1. Press and hold down the transmitter button you wish to program to the opener (1).
2. Press and release the program button on the side of the opener (2).
3. When the opener light blinks, it has learned the code. If the light bulb is not installed, two clicks will be heard.

To erase all codes from motor unit memory or to deactivate any unwanted remote, first erase all codes:

Press and hold the program button (2) on opener until the learn indicator light goes out (approximately 6 seconds). All previous codes are now erased. Reprogram each transmitter or keyless entry you wish to use.



23 KEYLESS DEVICE PROGRAMMING (OPTIONAL ACCESSORIES)

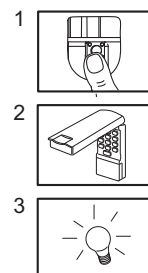
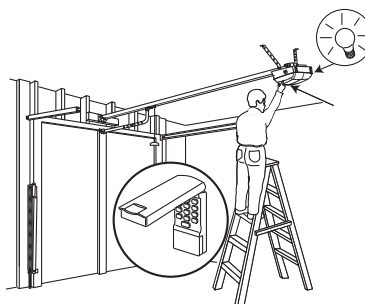


Activate the opener only when door is in full view, free of obstruction and properly adjusted. No one should enter or leave garage while door is in motion. Do not allow children to operate push button(s) or remote(s). Do not allow children to play near the door.

NOTE: Your new keyless entry must be programmed to operate your garage door opener.

**Program the receiver to match additional transmitter code.
Using the "LEARN" button:**

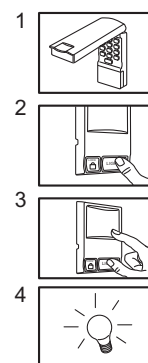
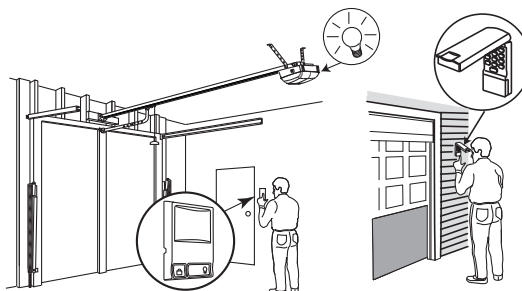
1. Press and release the "learn" button (1) on opener. The learn indicator light will glow steadily for 30 seconds.
2. Within 30 seconds, enter a four digit personal identification number (PIN) of your choice on the keypad (2), then press and hold the ENTER button.
3. Release the button when the opener light blinks (3). It has learned the code. If the light bulb is not installed, two clicks will be heard.



NOTE: This method requires two people if the keyless entry is already mounted outside the garage.

Using the multi-function door control:

1. Enter a four digit personal identification number (PIN) of your choice on the keypad, then press and hold ENTER.
2. While holding the ENTER button, press and hold the LIGHT button on the multi-function door control.
3. Continue holding the ENTER and LIGHT buttons while you press the push bar on the multi-function door control (all three buttons are held).
4. Release buttons when the opener light blinks. It has learned the code. If the light bulb is not installed, two clicks will be heard.



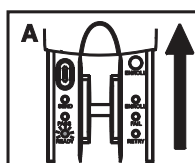
Wireless fingerprint access system C379 (optional accessory)

Full instruction are available with this accessory. Once you have enrolled your user into the C379 you can program the unit into your opener.

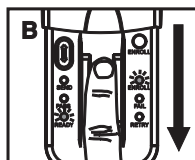
Using the "LEARN" button:

1. Press and release the "learn" button (1) on opener. The learn indicator light will glow steadily for 30 seconds.
2. Within 30 seconds slide the cover of the C379 up as illustrated (A). Swipe your finger on the reader head at a steady speed (B) until the yellow LED turns on (C).
3. When the opener light blinks. It has learned the code. If the light bulb is not installed, two clicks will be heard, ensure there are no obstructions in the path of the door, then press the send button (D) to test the door.

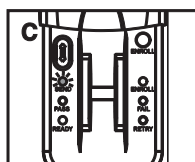
Programming C379 wireless fingerprint



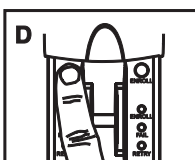
Slide the Cover plate up (A)



Swipe finger at steady speed (B)



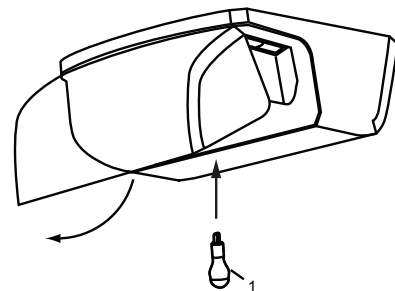
Yellow LED will indicate successful swipe (C)



Test reader by pressing the send button (D)

24 REPLACE LIGHT BULB

Replace light bulb (1) with a 21 watt maximum light bulb. Insert bulb into socket. The light will turn on and remain lit for 2 1/2 minutes when power is connected. After 2 1/2 minutes it will turn off.



25 WIRING THE BACKLIT DOOR CONTROL BUTTON OR THE (OPTIONAL) MULTI-FUNCTION DOOR CONTROL PANEL



Locate door control where the garage door is visible, away from door and door hardware and out of the reach of children. Mount at least 1.5 m (5 feet) above the floor.

Serious personal injury from a moving garage door may result from misuse of opener. Do not allow children to operate the door control or transmitter.

Permanently fasten the caution label to the wall near the door control as a reminder of safe operating procedures.

There are 2 screw terminals (1) on the back of the door control (2). Strip about 6mm of insulation from bell wire (4). Separate wires enough to connect the white/red wire to terminal screw 1 and the white wire to terminal screw (1).

Backlit door control button:

Fasten to an inside garage wall with sheet metal screws (3) provided with backlit push button. Drill 4mm holes and use anchors (6) if installing into drywall or concrete. A convenient place is beside the service door and **out of reach of children.**

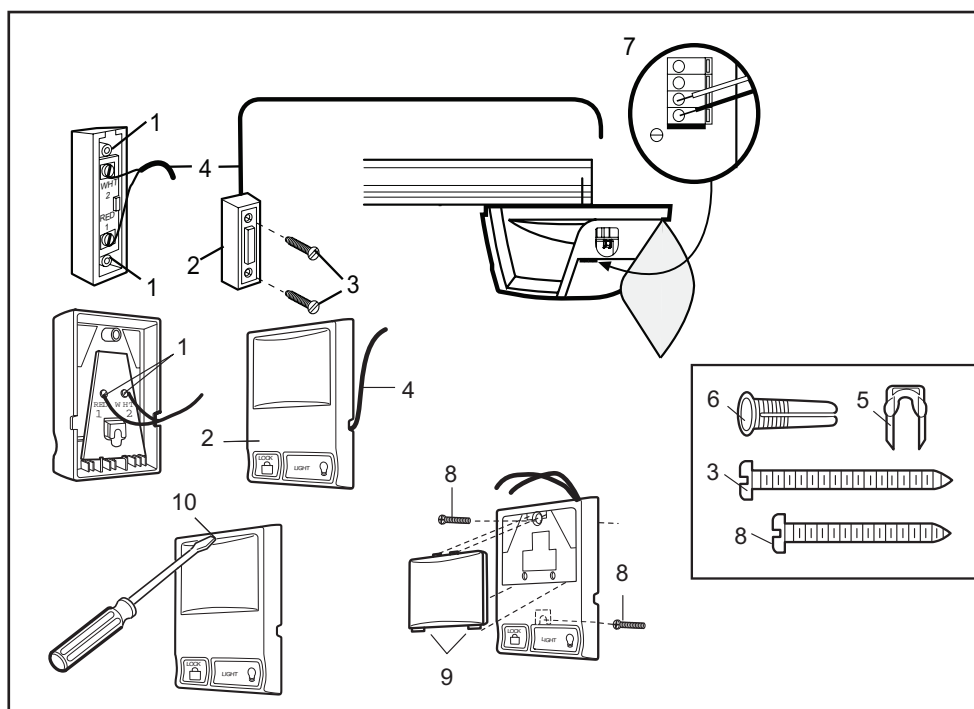
Multi-function door control (optional):

Insert a small flat head screwdriver into the top of the wall control (10), gently pry the cover off. Fasten to an inside garage wall with sheet metal screws (8) as follows:

- Install bottom screw, allowing 3mm to protrude from the wall.
- Position bottom of door control over screw head and adjust for snug fit.
- Install top screw with care to avoid cracking plastic housing. *Do not over tighten.*
- Replace cover by inserting bottom tabs (9) and snapping into place. To remove cover after mounting, gently pry at top with paper clip or small flat head screwdriver.

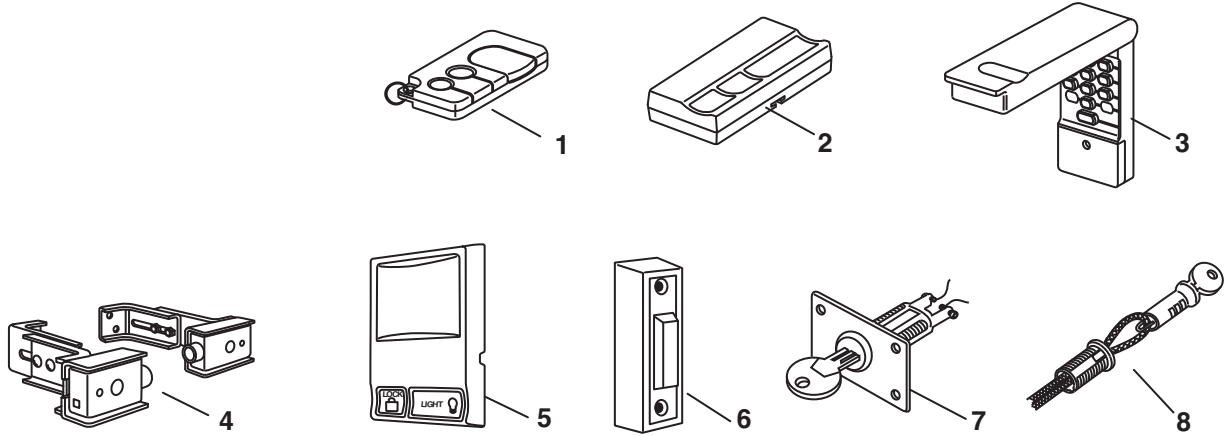
Run the bell wire up the wall and across the ceiling to the garage door opener. Use insulated staples (5) to secure wire.

The opener quick-connect terminals (7) are located in the recess next to the learn button on the left side panel. Insert bell wire into holes in the quick connect terminals as follows: red/white to red and white to white.



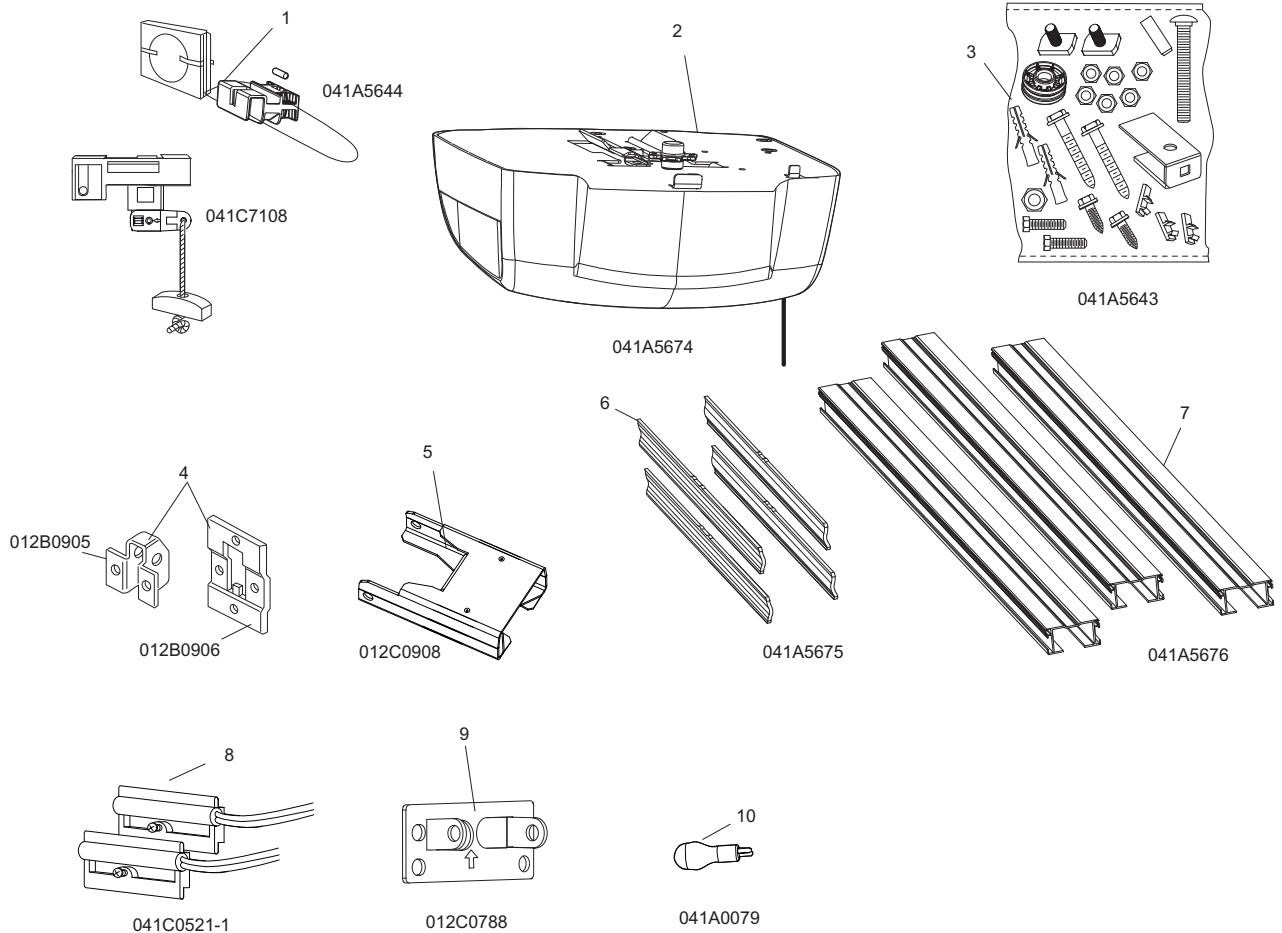
26 ACCESSORIES

- | | |
|--------------------|-----------------------------------|
| (1) Model 84335AML | 3-channel mini transmitter |
| (2) Model 84333AML | 3-channel transmitter |
| (3) Model 8747AML | Wireless keyless entry keypad |
| (4) Model 770AML | The Protector System™ (IR Beams) |
| (5) Model 845AML | Multi-function door control panel |
| (6) Model 75AML | Backlit door control button |
| (7) Model 760AML | Outside keyswitch |
| (8) Model 1702AML | Outside quick release |



27 REPLACEMENT PARTS

- | | | |
|-----|------------|--------------------------------|
| (1) | 041A5644 | Trolley with chain/cable assy. |
| (2) | 041A5674-2 | Head only |
| (3) | 041A5643 | Hardware bag |
| (4) | 012B0905 | Door bracket |
| | 012B0906 | Door bracket |
| (5) | 012C0788 | Header bracket |
| (6) | 012C0908 | Rail end piece |
| (7) | 041A5675 | Rail hardware |
| (8) | 041A5676 | Rail sections |



OPERATION OF YOUR OPENER

Your opener can be activated by any of the following devices:

- The transmitter. Hold the push button down until the door starts to move.
- The backlit door control button (if you have installed this accessory). Hold the button down until door starts to move.
- The outside keyswitch or keyless entry system (if you have installed either of these accessories).

Opening the door manually:

Door should be fully closed if possible. Weak or broken springs could allow an open door to fall rapidly. **Property damage or serious personal injury could result.**

The door can be opened manually by pulling the release handle down. To reconnect the doorpull the handle up and toward the opener, the trolley will re-engage upon operation, activate the unit.

Do not use the manual release handle to pull the door open or closed.

When the opener is activated by transmitter or door control button:

1. If fully open, the door will close.
2. If closed, the door will open.
3. If opening or closing, the door will stop.
4. If partially open, the door will move in the opposite direction of last travel.
5. If an obstruction is encountered while closing, the door will reverse to the open position.
6. If an obstruction is encountered while opening, the door will reverse for 1 second.
7. The optional Protector System™ uses an invisible beam which, when broken by an obstruction, causes a closing door to open and prevents an open door from closing. It is **STRONGLY RECOMMENDED** for homeowners with young children.

Allow a 15 minute cooling period after 5 continuous operations of the opener.

The opener light will turn on:

1. when opener is initially plugged in;
2. when the power is interrupted;
3. when the opener is activated.

CARE OF YOUR OPENER

When properly installed, opener will provide high performance with a minimum of maintenance. The opener does not require additional lubrication.

Limit and force adjustments:

These adjustments must be checked and properly set when opener is installed. Only a screwdriver is required to adjust the limits. Weather conditions may cause some minor changes in the door operation, requiring some re-adjustments, particularly during the first year of operation. Refer to the limit and force adjustments sections 18 & 19 . Follow the instructions carefully and **repeat the safety reverse test after any adjustment.**

Transmitter:

Additional remotes can be purchased at any time for use in all vehicles using garage. Refer to accessories. The receiver must be programmed to operate with any new remote.

transmitter battery:

If transmission range decreases, replace battery.

To change battery:

Insert batteries positive side up. To replace cover, snap shut along both sides. Do not dispose of the old battery with household waste. Take batteries to a proper disposal centre.

MAINTENANCE OF YOUR OPENER

Once a month :

- Repeat safety reverse test. Make any necessary adjustments.
- Manually operate door. If it is unbalanced or binding, call for professional garage door service.
- Check to be sure door opens and closes fully. Adjust limits and/or force if necessary.

Twice a year :

- Check chain tension. Disconnect trolley first. Adjust if necessary.

Once a year :

- Oil door roller, bearings and hinges. The opener does not require additional lubrication. Do not grease the door tracks.

TROUBLE SHOOTING

1. Opener doesn't operate from remote:

- Does the opener have electric power? Plug lamp into outlet. If it doesn't light, check the fuse box or the circuit breaker. (Some outlets are controlled by a wall switch.)
- Have you disengaged all door locks? Review installation instruction warning on page 1.
- Try a new battery.
- If you have two or more remotes and only one operates, refer wireless programming section 21.
- Is there a build-up of ice or snow under door? The door may be frozen to ground. Remove any obstruction.
- The garage door spring may be broken. Have it professionally replaced.

2. Remote has short range:

- Is battery installed? Try a new one.
- Change the location of the transmitter in the car.
- The metal garage door, foil-backed insulation or metal siding will reduce the transmission range.

3. Door reverses for no apparent reason and opener lights don't blink:

- Is something obstruction the door? Pull manual release handle. Operate door manually. If it is unbalance or binding, call for professional garage door service.
- Reprogram the force.
- Clear any ice or snow from garage floor area where garage door closes.
- If door reverses in fully closed position, adjust the close limit.

Repeat safety reverse test after adjustment is complete.

The need for occasional adjustment of the Limit positions is normal. Weather conditions in particular can affect door travel.

4. Door reverses for no apparent reason and door control button light blinks for 5 seconds after reversing:

- Check The Protector System™ (if you have installed this accessory). If the light is blinking, correct alignment.

5. The garage door opens and closes by itself:

- (Keypad or Code Switch transmitters only) Is there a neighbor with a garage door opener using the same code? Change your code.
- Make sure remote push button is not stuck in ON position.

6. Door does not close completely:

Adjust the close limit.

Repeat safety reverse test after any adjustment of door arm length, or close limit.

7. Door opens but won't close:

- Check The Protector System™ (if you have installed this accessory). If the light is blinking, correct alignment.

Repeat the safety reverse test after the adjustment is complete.

8. Opener light does not turn on:

Replace light bulb (21 Watts maximum).

9. Opener light does not turn off:

Defective logic board.

10. Opener motor hums briefly, then won't work:

- Garage door springs are broken. Close door and use manual release rope and handle to disconnect trolley. Open and close door manually. A properly balanced door will stay in any point of travel while being supported entirely by its springs. If it does not, call for a professional garage door service to correct the problem.
- If problem occurs on first operation at opener, door may be locked. Disable door lock.

11. Opener won't activate due to power failure:

- Pull manual release handle to disconnect trolley. Door can be opened and closed manually. The next time opener is activated, the trolley will reconnect.
- The outside quick release accessory 1702AML (if fitted) disconnects the Trolley from outside the garage in case of power failure.

opener. Use insulated staples (5) to secure wire.

The opener Quick-Connect Terminals (7) are located in the recess next to the learn button on the left side panel. Insert bell wire into holes in the Quick Connect Terminals as follows:

Red/White to Red and White to White.

12. Door reverses after the force adjustment was completed.

- Watch rail if it bends or swings. If so see section 19
- Door is very heavy and/or in bad condition. Call for professional garage door service.

13. Rail bends respectively rail swings a lot.

- Use additional hanging brackets for the rail.
- Garage door is very heavy or in bad condition. Call for professional garage door service.

14. Do I need to use the additional hanging brackets?

- Avoids bending or swinging of rail.

15. Opener light flares.

- When the garage door is very heavy or isn't balanced, have door serviced.

16. Opener overrides one of the light switches.

- Limit switches are not installed at the correct side of the rail and/or in the location. (refer attach limit switch section 18)
- A functional test of the rail contact (cable) can be made with a simple household magnet.
- Check condition of cables for insulation damages.
- Check if the magnet located inside the inner trolley is in place.

SPECIFICATIONS

Input Voltage 230 VAC 50/60 Hz

Max. Pull force600N

Rated Power Input85 Watts

Rated Load3.0 Nm

Standby Power9 Watts

Max. Door Weight60kg

Motor

Type63:1 Worm Gear Reduction

Volts24VDC

Drive Mechanism

Length of Travel2.3M

Travel Rate8cm/sec

Lamp24V 21 Watts

Safety

ElectronicAuto-Force Adjustment

ElectricalThermal Fuse in Transformer

Limit AdjustmentManual

Dimension

Length (Overall)2.75m

Headroom Required . . .30mm

Hanging Weight10kg

Receiver Code Registers

Rolling Code8

Operating Frequency . .433.92MHz

CHAMBERLAIN 2 YEAR LIMITED WARRANTY
HomEntry HE60ANZ
Garage Door Opener

Chamberlain Australia Pty Limited / Chamberlain New Zealand Limited (Seller) warrants to the original purchaser of the Home Entry HE60ANZ Garage Door Opener (Unit) that it is free from defects in material and/or workmanship for a period of 2 years from the date of first purchase from the Seller.

Please retain your proof-of-purchase in the unlikely event you require warranty service.

If, during the limited warranty period, the Unit fails due to defects in materials or workmanship Chamberlain will, provided the defective part or Unit is returned freight and insurance pre-paid and well packaged to the nearest Chamberlain office or authorised installer, undertake to repair or, at its option, replace any defective part or Unit and return it to the Buyer at no cost. Repairs and replacement parts are warranted for the remaining portion of the original warranty period.

Limited warranty on motor

Chamberlain will furnish a replacement motor free of charge, if it is found to be defective. Labour costs may apply. Where the Unit has been installed by an authorised installer, Chamberlain will furnish replacement parts free of charge through the authorised installer. A service fee for on-site service may apply.

In-warranty service

During the warranty period, if the product appears as though it may be defective, call our toll free service before removal of the unit. A Chamberlain technician will diagnose the problem and promptly supply you with the parts for "do-it-yourself" repairs, or provide you with shipping instructions for a factory repair or replacement. If an authorised installer installed your unit you must call them for prompt on-site service.

If our service centre determines that a warranty claim has been made in respect of a failure or defect arising out of any exclusion set out below, we may charge you a fee to repair and/or return the Unit to you.

Exclusions

This warranty does not cover any failure of the Unit due to:

- 1.non-compliance with the instructions regarding installation, operation, maintenance and testing of the Unit or of any product with which the Unit is used.
- 2.any attempt to repair, dismantle, reinstall or move the Product to another location once the Product is installed by any person other than an authorised installer.
- 3.tampering, neglect, abuse, wear and tear, accident, electrical storm, excessive use or conditions other than normal domestic use.

This warranty does not cover any problems with, or relating to, the garage door or garage door hardware, including but not limited to the door springs, door rollers, door alignment or hinges, any problems caused by electrical faults, replacement of batteries or light bulbs or labour charges for reinstalling a repaired or replaced Units.

Liability – Australia only

Under no circumstances shall the Seller be liable for consequential, incidental or special damages arising in connection with the use, or inability to use, the Unit. In no event shall the Seller's liability for damages or injury arising from breach of law or contract or for negligence, exceed the cost of repairing or replacing the Unit or refunding the purchase price of the Unit.

Under Division 2 Part V of the Trade Practices Act, 1974, certain warranties and conditions (Implied Terms) are implied into contracts for the supply of goods or services if the goods or services are of a kind ordinarily acquired for personal, domestic or household use or consumption. Liability for breach of those Implied Terms cannot be excluded or limited and the limitations and exclusions above do not apply to the Implied Terms.

Except for the Implied Terms and the warranties set out above, the Seller excludes all warranties and conditions implied by statute, at law, in fact or otherwise.

Liability – New Zealand only

Except as set out in the Fair Trading Act 1986 and the Consumer Guarantees Act 1993:

- (a) all other guarantees, warranties and representations in relation to the Unit or its supply are excluded to the extent that the Seller can lawfully exclude them; and
- (b) under no circumstances shall the Seller be liable for consequential, incidental or special damages arising in connection with the use, or inability to use, the Unit, other than those which were reasonably foreseeable as liable to result from the failure.

NOTE: We request that you attach your sales docket or invoice to this manual to enable you to establish the date of purchase in the unlikely event of a service call being made. Chamberlain reserves the right to change the design and specification without prior notification. Some features or accessories may not be available in certain markets or areas. Please check with your distributor.

CONTACT DETAILS:

Chamberlain service centres:

Australia
Phone toll free 1800 638 234
Fax toll free 1800 888 121
www.homentry.com.au

New Zealand
Auckland phone 09 477 2823
Phone toll free 0800 653 667
Fax toll free 0800 653 663
www.homentry.co.nz

