

Gebrauchsanleitung Weintemperierschrank

Seite 2-13

Operating Instructions for Wine Cooler

Page 14-25

Gebruiksaanwijzing Wijnklimaatkast

Pagina 26-37

Consignes d'utilisation Armoire de mise en température des vins

Page 38-49

Instrucciones de manejo Armario para acondicionamiento de vinos

Página 50-61

Istuzione d'uso Frigorifero temperato per vini

Pagina 62-73



Many thanks for your trust.

Congratulations on your purchase of this wine cooler. In buying this product, which is distinguished by its perfect user-friendliness, impeccable reliability and high quality, you have chosen a top class appliance. We wish you a lot of pleasure with your new wine cooler – and a lot of enjoyment from your wines.

The fewer the grapes produced in an area, the better the wine.

Poor, well-drained soils are best for good wines. The properties of the soil influence the vitality of the vine, which in turn affects the quality of the grape. Climate is another factor that is important for wine. Because light and air humidity are important for the development of the flavour of the wine.

The right environment for your wines.

A vine is an extremely sensitive plant. From the time it is planted to its maturing period and the time the grapes are harvested and the wine is made, it is dependent on three factors: light, air humidity and ambient temperature. This sensitivity continues even once the wine is bottled. To allow the flavour of the wine to fully develop or to preserve the excellent aroma, the wine has to be stored perfectly – and your wine cooler offers the best conditions for this.

The under worktop wine cooler

Wines only develop their full flavour and aroma when they are at the right temperature for drinking. In your wine cooler, wines can be brought slowly and evenly to the ideal drinking temperature. Red wines and white wines can be stored at the same time at the optimal drinking temperature in two separately adjustable temperature zones.



Contents

Page

Setting up / Connecting to the mains	
Fitting dimensions / Installation and fitting	
Changing over door hinges	
Operating and control elements	16-17
Switching the appliance on and off	
Setting the temperature	
Fan button	
Additional functions	
Audible warning signal	18-19
Interior light / Equipment	
Air exchange with activated carbon filter	
Storage diagram	20-21
Defrosting / Cleaning	
Malfunctions	22-23
Safety instructions and warnings	
Shutting your appliance down	
Environmental protection and disposal notes	
General information	24-25

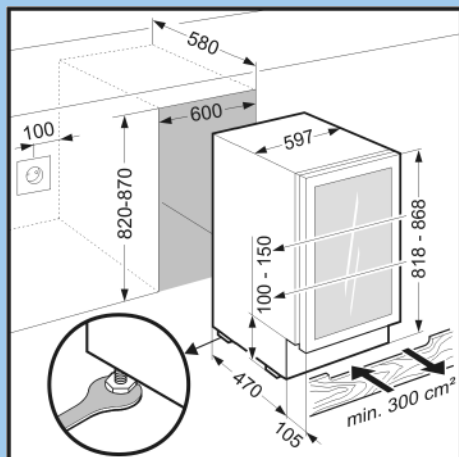
Setting up

- Avoid locating the appliance in direct sunlight or near heat sources such as an oven or a radiator.
- The floor should be level and even. You can compensate for an uneven floor by adjusting the adjustable feet.
- Standard EN 378 specifies that the room in which you install your appliance must have a volume of 1 m³ per 8 g of R 600a refrigerant used in the appliance, so as to avoid the formation of inflammable gas/air mixtures in the room where the appliance is located in the event of a leak in the refrigerant circuit. The quantity of refrigerant used in your appliance is indicated on the type plate on the inside of the appliance.
- The appliance is set to operate within specific ambient temperature limits according to its climate rating. These temperature limits should not be exceeded. The correct climate rating for your appliance is indicated on the type plate.
 SN = +10°C to +32°C
 SN - ST = +10°C to +38°C

Electrical requirement

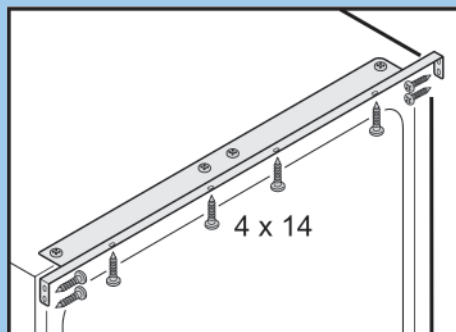
Power supply (AC) and voltage at the operating point must comply with the details on the type plate. The type plate is located on the top left-hand side on the inside of the appliance. The socket must be fused with a 10 A fuse or higher, it must be away from the rear of the appliance and must be easily accessible.

Fitting dimensions (mm)



- Adjust to recess height using the 4 adjustable feet on the underside of the appliance.

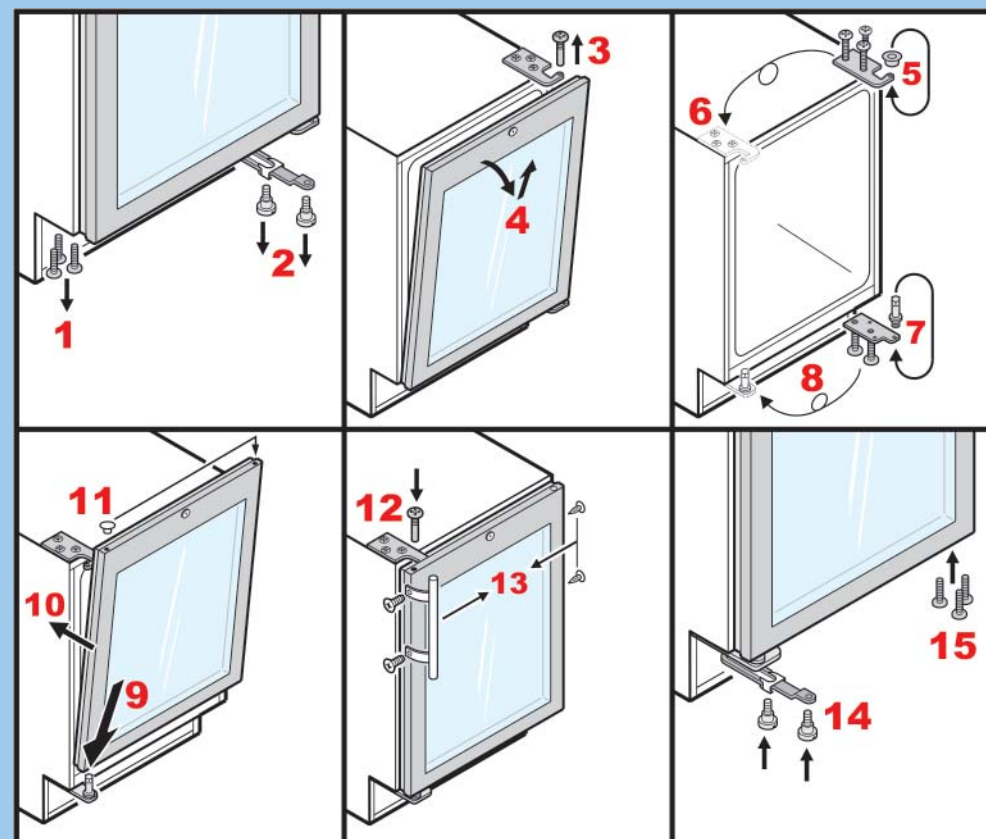
Installation and fitting



- Connect the appliance to the mains.
- Slide the appliance into the recess.
- Secure the appliance in the recess using 4 x 14 screws.

The ventilation cross-section in the plinth panel must be min. 300 cm².

Changing over door hinges



Operating and control elements



- ① Lower compartment temperature display
- ② Upper compartment temperature display
- ③ Lower compartment temperature setting buttons
- ④ Upper compartment temperature setting buttons
- ⑤ Audible warning on/off button
- ⑥ Interior light on/off button
- ⑦ Child-proof lock
- ⑧ On/off button
- ⑨ Fan button

Switching the appliance on and off

You are recommended to clean the appliance before switching it on for the first time (see "Cleaning"). Connect the appliance to the mains - the appliance is switched on. The alarm will sound when the appliance is switched on for the first time and when the appliance is warm. Press the "Alarm" button to switch it off. The temperature display will also flash.

- To switch the appliance off: Keep the "ON / OFF" button pressed for 3 sec. so that the temperature display goes out.
- To switch the appliance on: Press the "ON / OFF" button until the Display lights up.



Setting the temperature

The temperature of both compartments can be set separately. When the appliance is switched on for the first time, the temperature is preset to +12°C in the upper and lower compartments.

To reduce the temperature: Press the DOWN button;
- on the left for the upper compartment, on the right for the lower compartment.



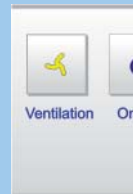
To increase the temperature: Press the UP button.

- While you are entering the temperature, the set temperature will flash on the display.
- You can change the settings in increments of 1°C briefly pressing the button again.
- The electronic controls will switch over automatically about 5 seconds after the last time you pressed the button, and the actual temperature will be displayed.

If "F0" or "F1" appears in the display, the appliance has a fault. Consult your nearest customer service point, quoting the **type of appliance, index and appliance number.**

Fan button

Should you wish to use the wine cooler to store wine for long periods of time, activate the "Ventilation" button. The light in the button comes on. Thereby a climate which corresponds to that of a wine cellar is achieved inside the wine cooler. Corks are prevented from drying out due to an increased level of humidity.



Additional functions

In set-up mode you can set the child-proof lock and adjust the brightness of the display. The child-proof lock is designed to protect the appliance from being switched off accidentally by children.

Activating set-up mode:

- Press fan button for approx. 5 secs
- the fan button flashes - the display shows c for child-proof lock.
Note: the value to be altered flashes.
- Select the required function by pressing the Up/Down button:



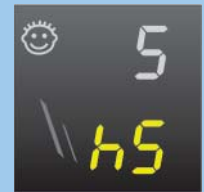
c = child-proof lock, h = brightness of the display

- Now select/acknowledge function by pressing fan button briefly:

> For **c** = child-proof lock,
press the Up/Down button to select
c1 = child-proof lock on or
c0 = child-proof lock off and acknowledge with the fan button.
When the symbol ☺ is lit, the child-proof lock is activated.



> For **h** = brightness, press Up/Down button to select
h1= minimum to
h5 = maximum brightness and acknowledge with fan button.



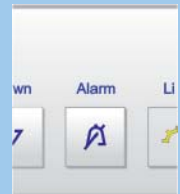
Exit set-up mode:

- Exit the set-up mode by pressing the On/Off button; after 2 min. the electronic system switches over automatically. The normal operating mode is activated again.

Audible warning signal

The audible warning signal helps to protect your wines against excessive temperature fluctuations.

- It sounds when the door has been left open for longer than about 60 seconds. The audible warning device is switched off by pressing the "Alarm" button.
- It sounds when the interior gets too warm or too cold. The temperature display will also flash. The audible warning device is switched off by pressing the "Alarm" button. The temperature display will continue to flash until the cause of the alarm has been rectified.



Interior light

A lightbar is integrated into the upper and lower compartments.

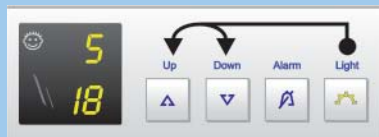
The interior light can be switched on and off using the "Light" button.

Caution - class 1M laser radiation. When cover is removed, do not look directly at light through optical instruments.



Furthermore, the brightness of the lighting can be adjusted.

- Press the "Light" button. The indicator lamp in the switch will light up.
- Press and hold the "Light" button and at the same time press the temperature setting buttons for the lower compartment to increase or decrease the brightness. "Down" = darker, "UP" = brighter.



Equipment

Pull-out shelf

The pull-out shelf allows bottles of wine to be removed more easily.

Labels

The appliance is supplied with a label holder with labels for each shelf. Use these to label the type of wine stored on each shelf. Use a soft pencil on the labels so that you can erase it again when necessary. Additional labels can be obtained from your dealer.



Air exchange with activated carbon filter

The way in which wines continue to mature depends on the ambient conditions. The quality of the air is therefore decisive for preserving the wine. For this reason, an activated charcoal filter is fitted in the interior rear wall of both the upper and lower compartments.

We recommend that you replace the filter once a year. Filters can be obtained from your dealer.

Changing the filter: Take the filter by the handle. Turn it 90° to the left or right and remove.

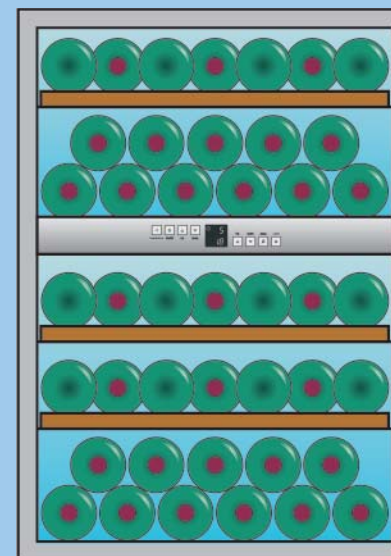
Inserting the filter: Insert with the handle in a vertical position. Turn it 90° to the left or right until it clicks into place.



Storage diagram

for 750 ml Bordeaux bottles

Total: 43 bottles



Safety instructions and warnings

- To prevent injury or damage to the unit, the appliance should be unpacked and set up by two people.
- In the event that the appliance is damaged on delivery, contact the supplier immediately before connecting to the mains.
- To guarantee safe operation, ensure that the appliance is set up and connected as described in these operating instructions.
- Disconnect the appliance from the mains if any fault occurs. Pull out the plug, switch off or remove the fuse.
- When disconnecting the appliance, pull on the plug, not on the cable.
- **Any repairs and work on the appliance should only be carried out by the customer service department, as unauthorised work could prove highly dangerous for the user. The same applies to changing the mains power cable.**
- Do not stand on the plinth, drawers or doors or use them to support anything else.
- Do not let children play with the appliance, e.g. do not allow them to sit in the drawers or swing on the doors.
- **If you have a lockable appliance, do not keep the key near the appliance or within reach of children.**
- Do not use electrical appliances inside the appliance.
- Do not allow naked flames or ignition sources to enter the appliance. When transporting and cleaning the appliance ensure that the refrigerant circuit is not damaged. In the event of damage, make sure that there are no ignition sources nearby and keep the room well ventilated.

Shutting your appliance down

If your appliance is to be shut down for any length of time, switch it off and disconnect the plug or remove the fuse. Clean the appliance and leave the door open in order to prevent unpleasant smells.



Environmental protection and disposal notes

The packaging is designed to protect the appliance and individual components during transport and is made of recyclable materials.

- corrugated cardboard/cardboard (predominantly recycled paper)
- moulded polystyrene (foamed, CFC-free polystyrene)
- polyethylene bags and sheets
- polypropylene straps
- Please return the packaging material to the nearest official collection point so that the various materials can be recycled or reused as far as possible and so as to avoid throwing them away.

Old appliances still contain reusable materials and should not be disposed of with household or bulk refuse.

- Disable discarded appliances immediately by removing the plug and cutting through the connection cable.
- **Remove the spring-action or bolt catch from the appliance or render it unusable so that children cannot become trapped inside and suffocate.**
- Ensure that the refrigerant circuit and in particular the heat exchanger on the rear of the appliance is not damaged before the appliance that is no longer needed is taken away for disposal. In this way the refrigerant will not escape into the environment.
 - Information concerning the refrigerant and insulating materials used can be found on the type plate.
 - Information on collection dates or collection points can be obtained from the waste disposal authorities or local council.

General information

The refrigerant circuit has been tested for leaks.

The appliance is radio-suppressed to EN 55014 and thus complies with EC Directive 87/308/EEC.

All types and models are subject to continuous improvement and the manufacturer therefore reserves the right to make modifications to the shape, equipment and technology.