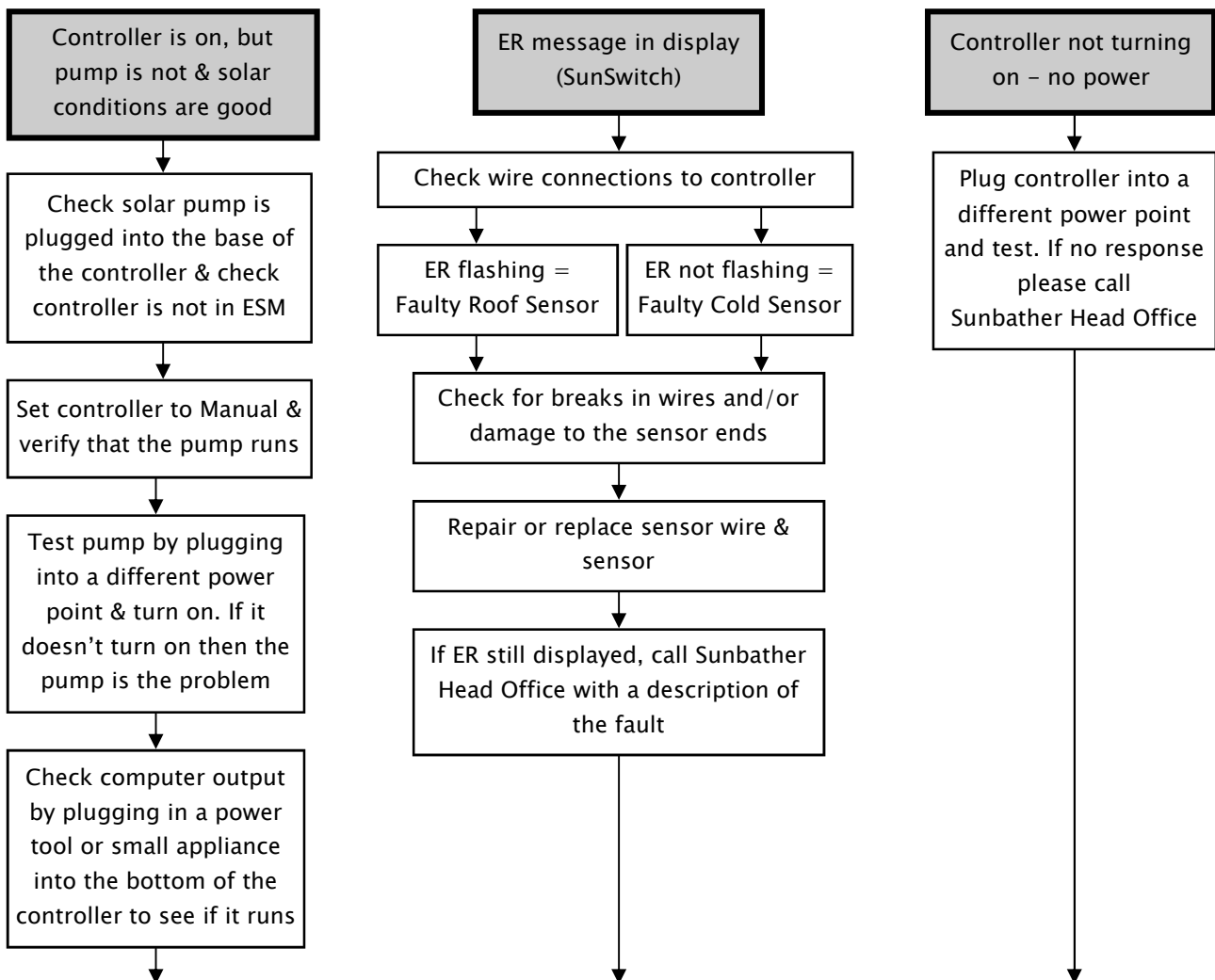


Trouble Shooting

Trouble Shooting: SunSwitch Controller



Contact Sunbather – service@sunbather.com.au

Refer to our website for additional SunSwitch information

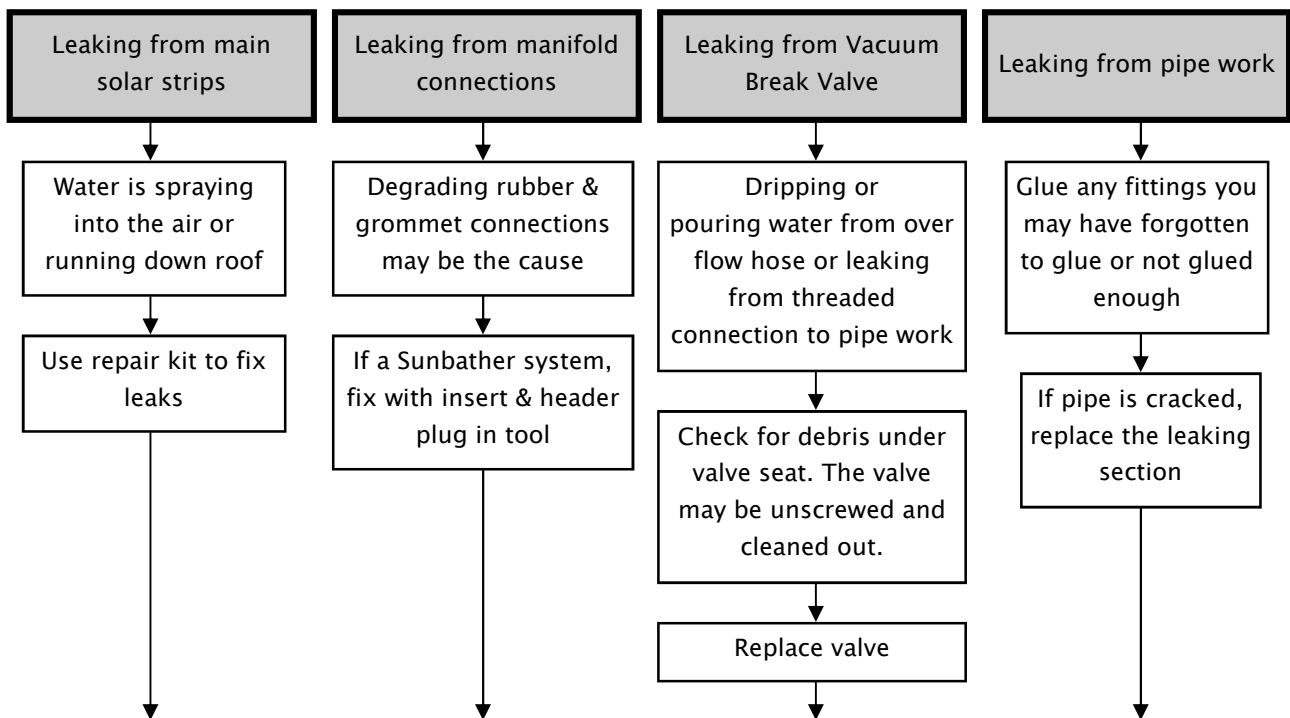
www.sunbather.com.au

Other Tips:

- If you have an ER message displayed on an SCM model controller, (blue box with diving girl), the ER message will not be flashing, but the LED light next to the button 'Roof Temp, Set Temp, Pool Temp' will be red or green. Red = Roof/Hot Sensor fault. Green = Pool/Cold Sensor fault. Please call Sunbather Head Office for repair information.
- For SCM controller with a serial number prior to 411583 (found on the back or base), brass ended 2kΩ sensors are required – plastic ended 47kΩ sensors are not compatible.
- For SCM Controllers with a serial number 411583 and onwards, use plastic ended sensors (47kΩ) which are interchangeable with SunSwitch sensors.
- SunSwitch version 6 (serial numbers 1500 – 4999).
- SunSwitch version 8 (serial numbers 5000 – 7499).
 1. Flashing dot in LED display means the controller is awaiting user instruction, eg. Set temperature. Pulsating circle means the controller is in Auto.
 2. Energy Saving Mode (ESM) has a 2.5 hour lock-out period after the set temperature has been reached. A non-flashing dot in the display indicates that the unit is in ESM. ESM last 2.5 hours. At the end of this period the unit will run a 5 minute test before resuming normal operation.

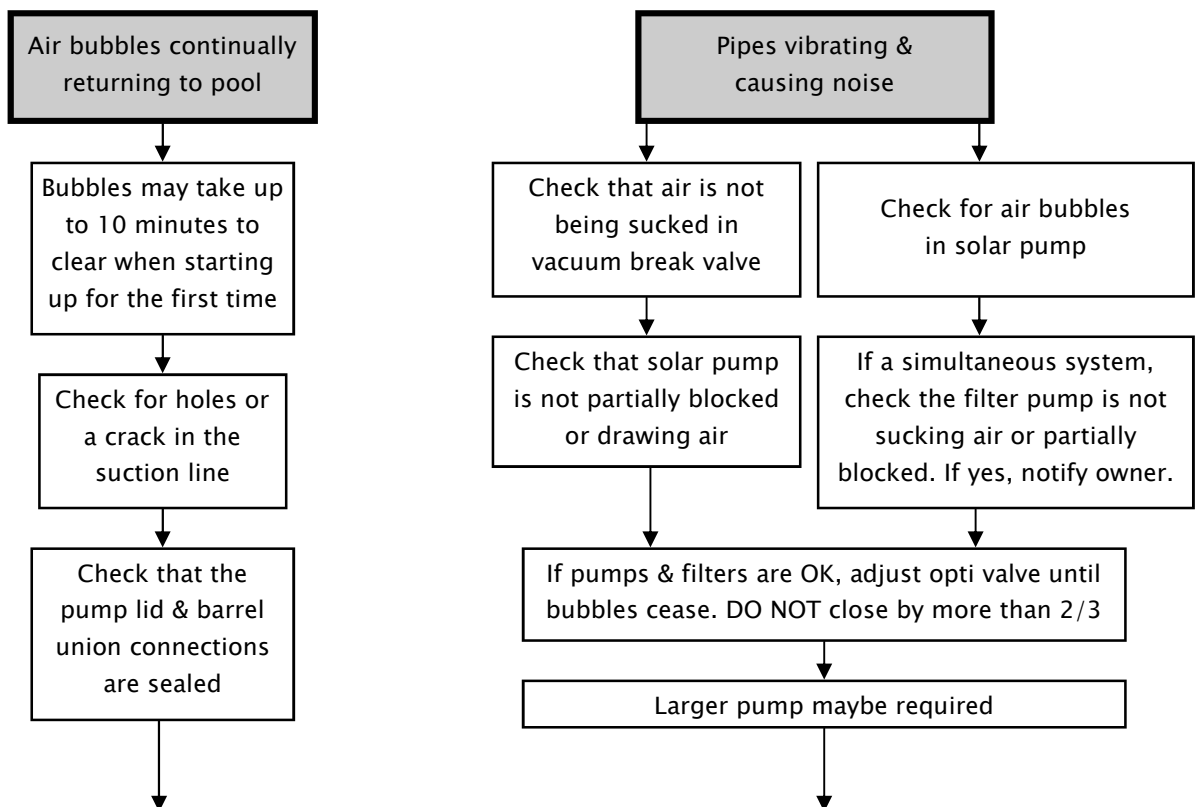
Trouble Shooting

Trouble Shooting: Leaks



Contact Sunbather – service@sunbather.com.au

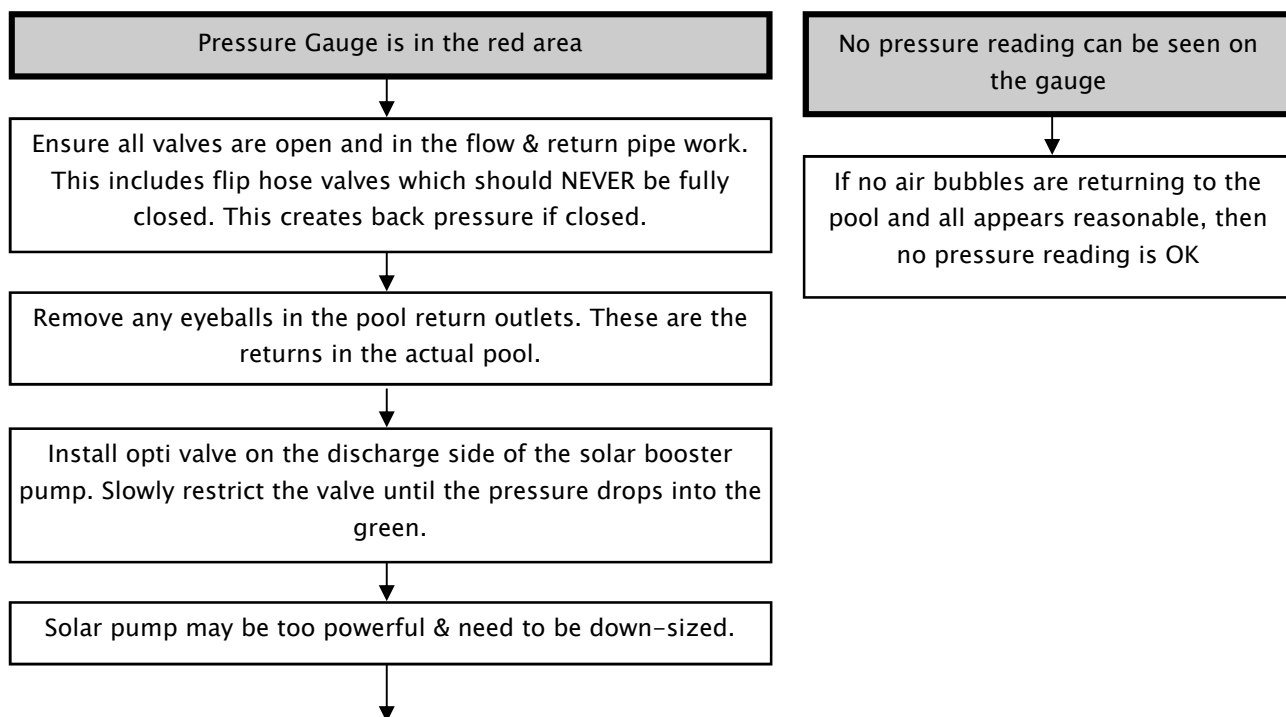
Trouble Shooting: Solar Pipe Work



Contact Sunbather – service@sunbather.com.au

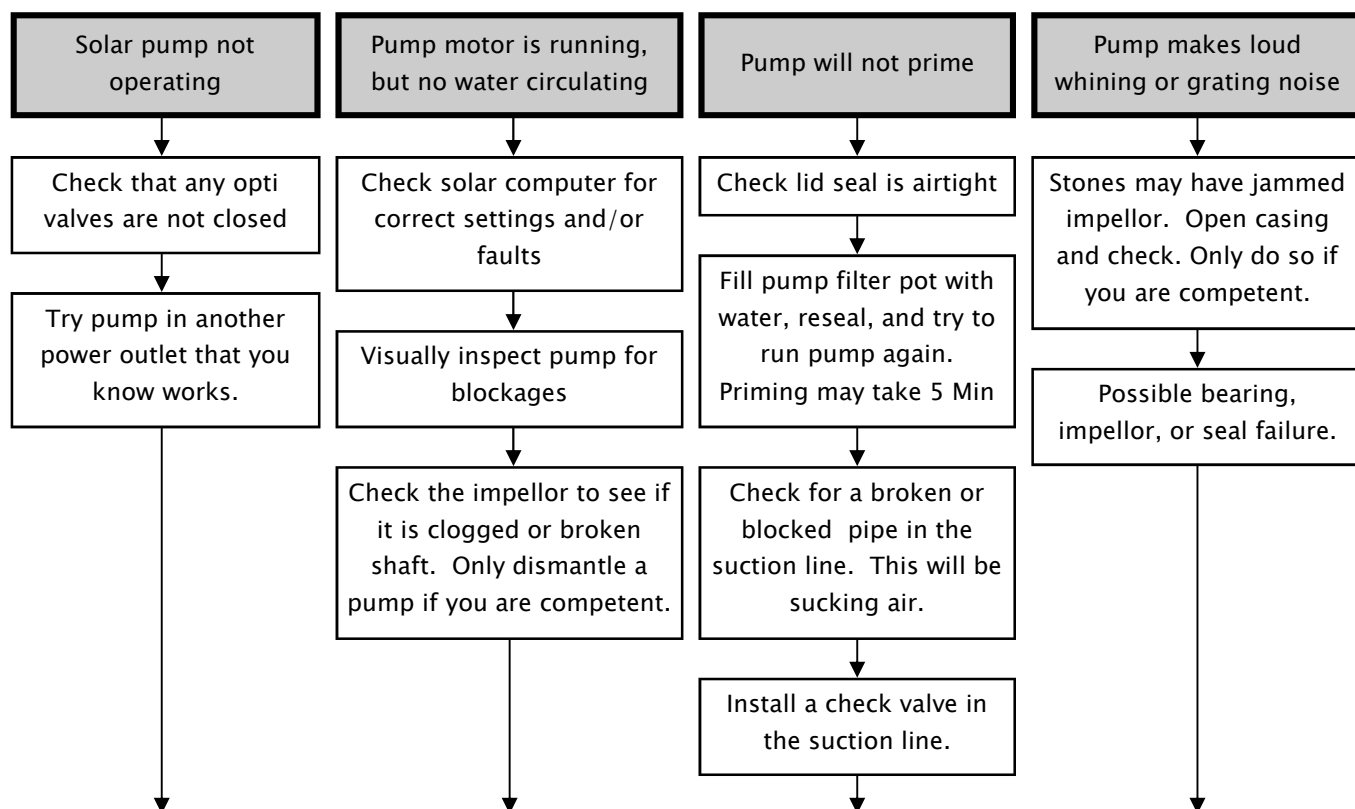
Trouble Shooting

Trouble Shooting: Pressure Gauge



Contact Sunbather – service@sunbather.com.au

Trouble Shooting: Solar Pump



Contact Sunbather – service@sunbather.com.au

Sunbather Solar Pool Heating

Solar FAQ's

Ideal Roof Type:	All except slate
Ideal Orientation:	North, North-West & West
Ideal Roof Angle:	Any walkable roof
Ideal Exposure:	In sun for at least 2/3 of the day
Ideal Height:	Up to 4 storeys
Ideal direction:	Running horizontally across roof. May be ran vertically on tile roofs
Ideal Fixation:	Glued to roof surface with a high grade silicone
Ideal Size:	100% of pool surface area
Ideal Maintenance:	Annual inspection by qualified Sunbather Technician
Weight On Roof:	4kg per m ² (When full of water)

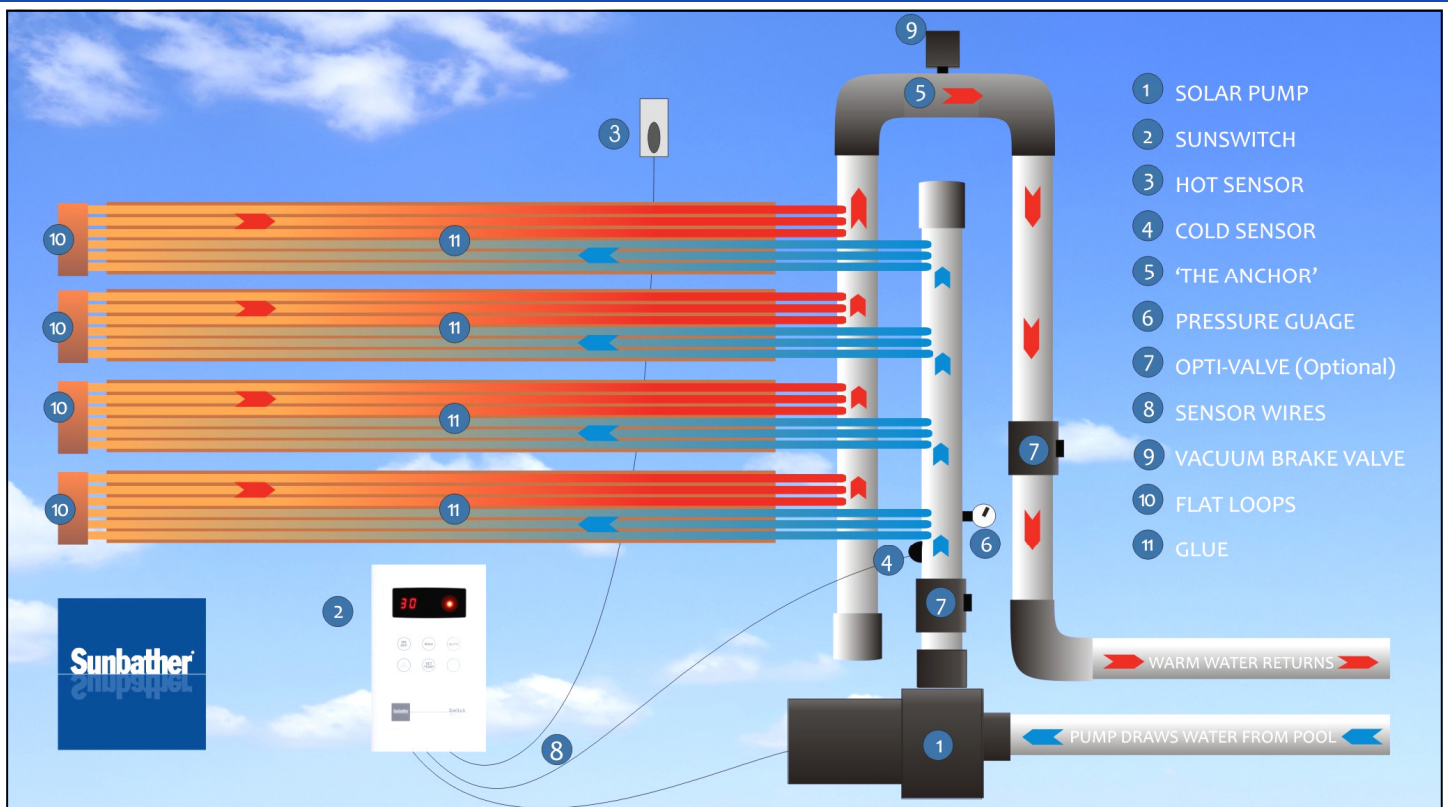
Troubleshooting FAQ's

Pool is not heating to required temperature

- Is there enough collector?
- Is the controller set correctly?
- Is it a brand new system? It takes around 4–5 days of good sun to heat
- Is it an old system that has previously worked well? Check for blockages in pipe work
- If it is leading into Autumn, the sun isn't as high in the sky or as hot

Refer to pages 26–28 or our website for more troubleshooting & detailed SunSwitch information or contact your nearest Sunbather office.

Required Components of a Sunbather Solar System



The above picture is of an ideal Sunbather Solar System & a list of its components.

All these items and more can be found on pages 7–11 of this price list.

"A Collection of Great Ideas"

