

Problems with the Stoma and Skin

ILEOSTOMY

COLOSTOMY

ILEAL CONDUIT

GRANULOMAS:

A granuloma is a small round shiny spot that appears on or next to the stoma.

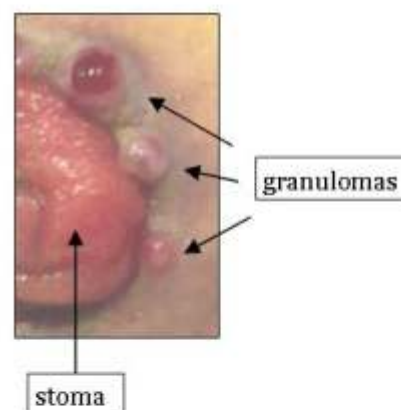
Granulomas tend to bleed easily.

This can prevent good adhesion of your appliance.

Your Stomal Therapy Nurse can treat granulomas with silver nitrate.

Several treatments may be necessary as they tend to come back.

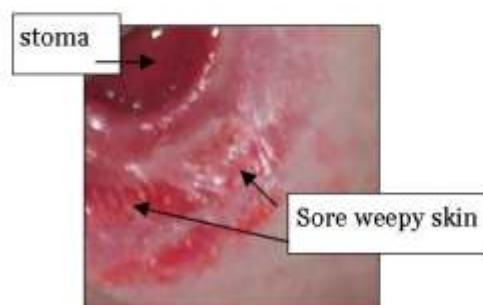
This should not cause any pain or discomfort.



SORE, BROKEN OR WEEPY SKIN AROUND THE STOMA

There are several reasons for this:

- Appliance leakage
- Stripping of skin when removing appliance
- Using strong soap
- Allergy to a product or appliance
- Pre-existing skin problems e.g. eczema



You will need to see your Stomal Therapy Nurse for a skin assessment and treatment.

Stop using soap, if you are. Do not use any wipes that contain alcohol.

Use warm tap water and soft paper hand towels to gently cleanse the stoma and skin. Pat dry skin only with a dry Kleenex type tissue.