



## **Sprayer User Guide – TOTAL Spray Applicator**

### **Instructions For Use**

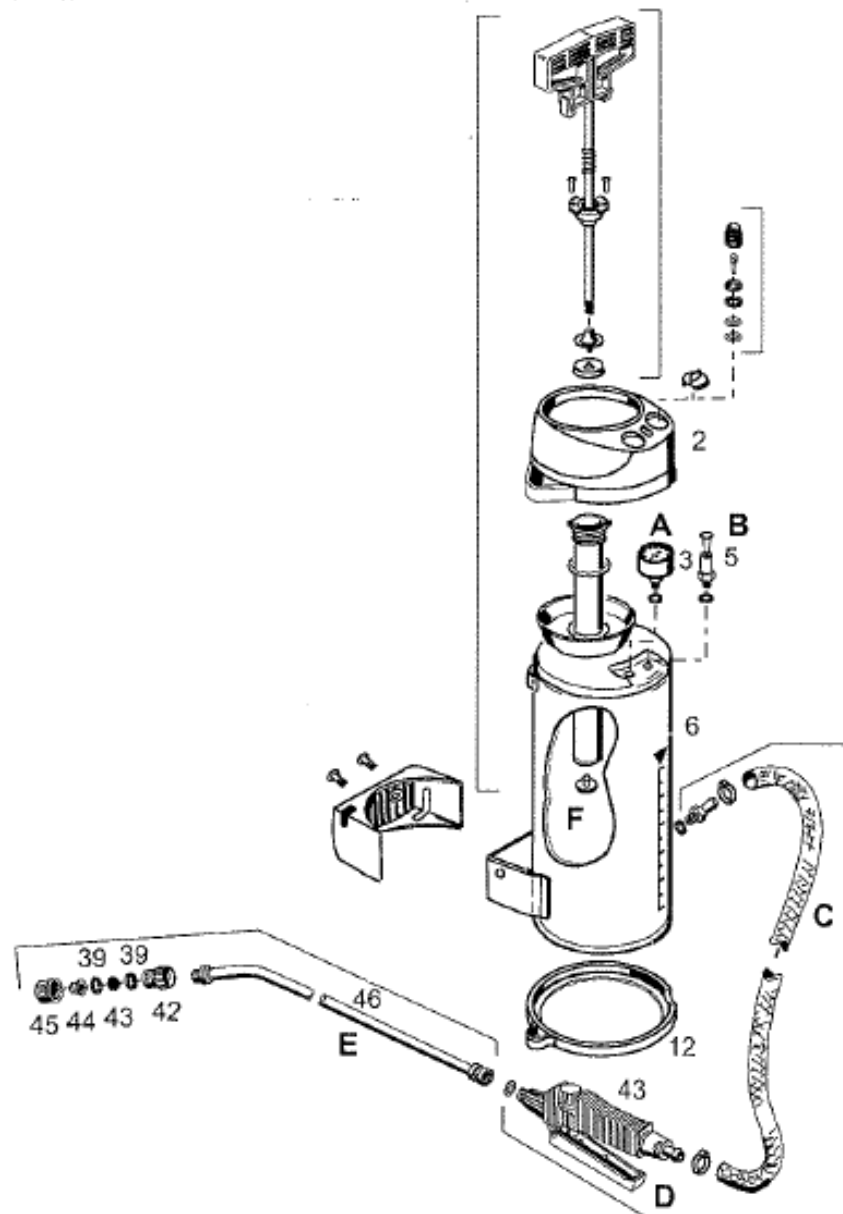
- Make sure that all connections are fastened tightly.
- When filling and pressurising, ensure sprayer is in an upright position.
- Engage handle with the pump cap and unscrew pump by turning counter-clockwise, then remove.
- Pour the liquid to be sprayed through the opening at the top . Do not fill the tank above the rated working volume as the balance of tank space is required for compressed air. The maximum working volume is marked on the outside of the tank.
- Replace the pump and tighten by turning clockwise. Over tightening of the pump may cause damage to the engagement thread. Pump the handle using full even strokes with both hands until the pressure gauge indicates the maximum pressure (marked in red). At this level, there will be enough pressure in the tank to empty its contents without additional pumping. If the sprayer is not filled to the normal working capacity, the pressure may be kept below the red mark to avoid excessive pumping.
- To spray, squeeze the trigger of the discharge valve. Transport the sprayer by holding the pump handle with the spare hand. When the trigger is released, spraying stops immediately.
- Do not spray against the wind or in strong winds.
- Where a compressed air filler valve is installed in place of the hand pump, please ensure the valve's Instructions for Use are followed (as supplied separately).

### **Maintenance & Care**

- Release residual pressure from tank before unscrewing the pump, by pulling up the red safety valve button at the top of the tank.
- Empty sprayer after use and rinse carefully with water or suitable cleaning agent. Never leave spraying liquid in the tank for extended periods (greater than 1 week).
- Once the tank is empty there will be some residual liquid remaining. Rinse out this liquid twice with ½ litre clear water (or cleaning agent recommended by the liquid's manufacturer), shaking the sprayer well, and spraying out the diluted liquid. Never dispose of residues in sewers or on the ground. Follow the manufacturer's directions for disposal of materials.
- Once a year, clean the slotted filter in the discharge valve with water.
- Once a year, lubricate gaskets.
- Apply oil sparingly on the piston rod to lubricate the piston washer.



- At least once a month, check for leaks and correct functioning of all components under maximum tolerable working pressure in working and idle mode, including:
  - Tightness of all sprayer components at maximum allowable pressure with 5lt of liquid in tank.
  - Correct functioning of air pump, discharge valve (D), safety valve (B), and pressure gauge (A).
  - Condition of tank and pressure hose (C).
  - Spray pattern and precise dosage of nozzle.





## **Trouble-shooting**

**⚠ Read safety instructions** – Empty tank and release residual pressure.

<b>Fault</b>	<b>Cause</b>	<b>Remedy</b>
No pressure builds up in the device	Pump is not screwed on tightly.	Screw the pump on tightly.
	O-ring is faulty or not aligned properly	Replace or realign O-ring.
	Diaphragm is defective	Replace the diaphragm
	Piston washer is faulty	Replace piston washer
Liquid flows out of the pump	Valve disk dirty or defective	Clean or replace valve disk.
Nozzle does not spray even though pressure is present	Filter and/or nozzle blocked	Clean the filter and/or nozzle
Safety valve releases pressure too early	Safety valve is defective	Replace safety valve
Shut-off valve does not close. Liquid released without discharge trigger squeezed.	O-ring on the pressure bolt not greased. Defective pressure bolt or O-ring.	Grease the O-ring of the pressure bolt. Replace the pressure bolt or O-ring.
Pressure gauge is not indicating any tank pressure.	Pressure gauge is defective	Remove attachment (2) at top, then unscrew pressure gauge & replace.