

# USER GUIDE



## **Remote Management Software**

PC & Ness TS07 Touch screen Edition



## TABLE OF CONTENTS

Introduction .....	2
Basic Operation .....	3
Security .....	3
Switching to Other Keypads .....	8
Lighting .....	9
Climate .....	12
Tasks .....	14
Outputs .....	15
Custom Settings .....	17
Links .....	19
Cleaning the Screen (For touch sensing screens only) .....	20

### Introduction

ElkRM Remote Management software provides you with a convenient and easy to use method of controlling your M1Gold or M1EZ8 system from a touchscreen or PC. With ElkRM, you can control many aspects of the system including; Security, Lighting, Tasks, Climate, Outputs, Custom Settings, etc. This manual will help you to become familiar with the operation of ElkRM and the control features it provides.

## Basic Operation

The buttons on the left side of the screen are used to change between pages. Not all pages are available on all systems.

## Security

The security page displays overall system status and provides many of the operational capabilities that are available from a physical keypad.

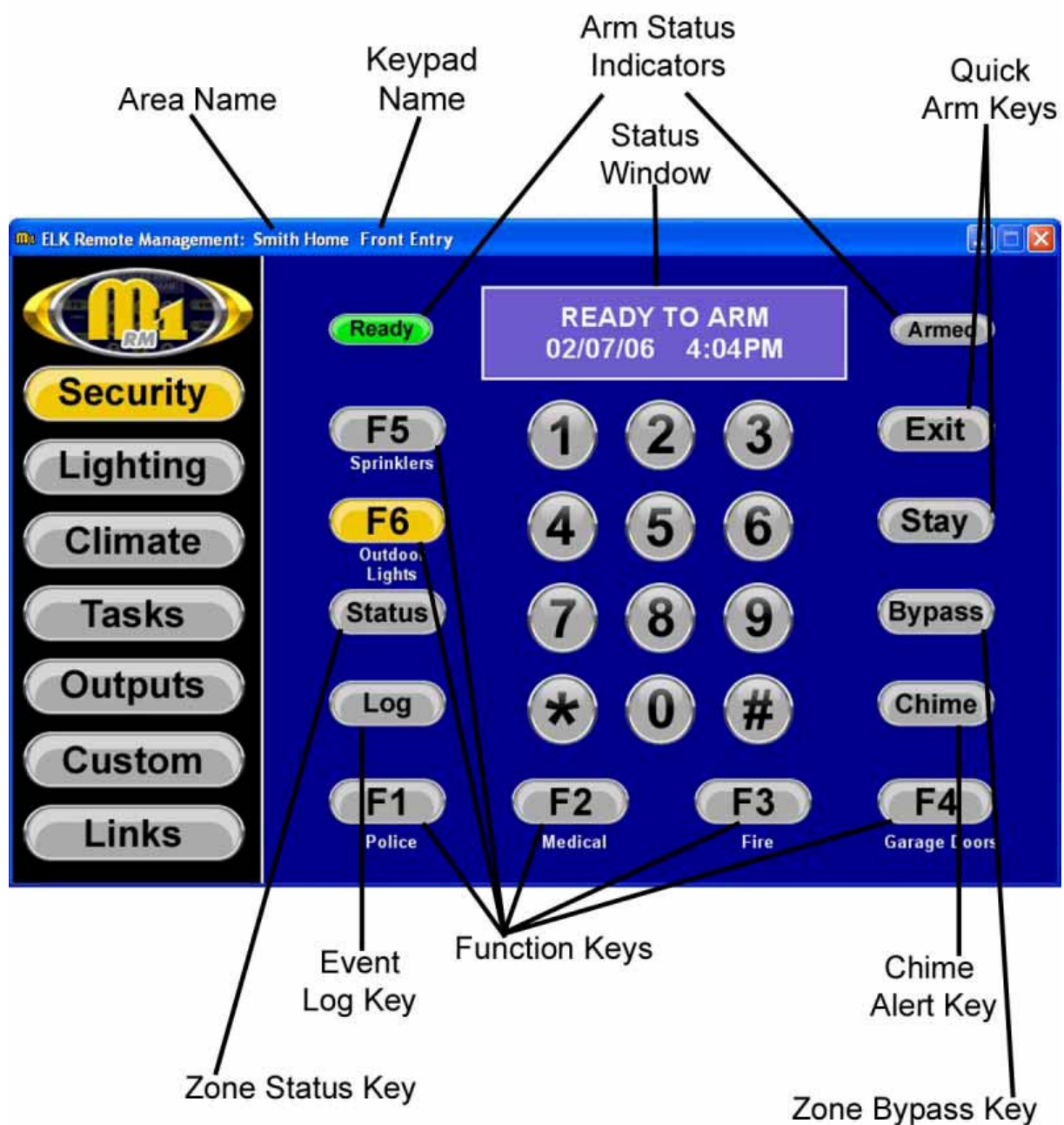


Figure 1

**Status Window:** Displays current arm status/mode, date, and, time. It also displays system message for chime and bypass features.

**Arm Status Indicators:** The Ready and Armed Indicators illuminate to indicate the current arm status to the system.

- **Ready and Armed Indicators are not illuminated (Gray)-** The system is not armed and one or more alarm zones is not secure.
- **Ready Indicator is Green-** System is ready to arm
- **Armed Indicator is Red-** System is armed. Status Window will display the mode in which the system is armed.

**Quick Arm Buttons:** Allows single or double press arming of the system.

- **Exit Button-** Arms to Away Mode, toggles to Vacation Mode
- **Stay Button-** Arms to Stay Mode, toggles to Stay Instant, Night, and Night Instant (some modes not available on all systems)

To toggle the arm mode, click the quick arm key multiple times. The Status Window will display the arm mode. The Exit button will be illuminated when the system is armed in Away or Vacation Mode. The Stay button will be illuminated when the system is armed in Stay, Stay Instant, Night, or Night Instant Mode

**Function Buttons:** These 6 “F” buttons may be used as panic buttons or to perform other functions such as open/close the garage door, turn on lights, etc. A description appears under each button, indicating its function. The button may also illuminate (as shown on the F6 button in Figure 1) to indicate the alarm is activated, the garage door is open, the light is on, etc.

**Chime Mode Button:** This button is used to activate the Chime feature. This feature provides an audible alert when certain doors, windows, etc. are violated. There are four different selections for the Chime Feature: Tone, Voice, Tone/Voice, and Off. Click the Chime button to toggle between the selections. The Status Window will display the Chime mode as the key is pressed. When the chime is active the button is illuminated.

---

**Area Name:** The name assigned to your system (or the area of your system that the keypad you are viewing is assigned to) will be shown here. See Page 8 for information on switching keypad.

**Keypad Name:** The name assigned to the keypad you are currently viewing. For information on switching to a different keypad see page 8.

**Zone Bypass Button:** This button is used to temporarily exclude a zone from the system, preventing it from activating an alarm. The zone is excluded until the system is disarmed, or the zone bypass is cancelled.

### **Bypassing a Zone**

1. Press the Bypass button
2. Enter the number of the zone you wish to bypass
3. Press the Bypass button again
4. If the zone is bypassed, the Bypass button will be illuminated and the status window will display Ready w/ Bypass.

A zone bypass can be cancelled by following the steps above. If the zone is un-bypassed, the bypass button will return to gray.

### **Quick Bypass of Violated Zones**

This feature allows you to easily bypass all violated zones.

1. Press the Bypass button
2. Enter 999
3. Press the Bypass button again
4. If the Quick Bypass is accepted, the Bypass button will be illuminated and the status window will display Ready w/ Bypass.

**NOTE: Only zones that have been programmed as bypassable can be bypassed. Furthermore, bypassing of zones is only available if the user code which was used to log onto EIkRM actually has the bypass privilege enabled.**

**Zone Status Key:** Click this button to display the Zone Status pages as shown in Figure 2. Each page provides a quick view of the current status of up to 12 zones. It also allows you to easily bypass zones (if enabled).



Figure 2

The button next to each zone displays the zones current status.

- ✓ Indicates that zone is normal or secure
- ✗ Indicates that zone is violated or not secure
- ⊘ Indicates that zone is bypassed

A zone can be bypassed by clicking the button next to the zone name.

Each page displays up to 12 zones at a time. If your system has more than 12 zones, buttons located at the top of the screen allow you to scroll through the pages. If there are not more than 12 zones programmed in the system these buttons will not appear.

- << Goes to Page 1
- < Goes Back 1 page
- > Goes Forward 1 page
- >> Goes to Last Page

**Event Log Button:** Click this button to access the event log, which contains security and system event information such as arming, disarming, zone bypassing, alarms, troubles, etc. as shown in Figure 3.

Date	Time	Area	Event	Extended Data
Thu 02/09/2006	10:44	1	1363 = REMOTE PROGRAMMING	
Thu 02/09/2006	10:27	1	1130 = FAIL TO COMMUNICATE TROUBLE	
Thu 02/09/2006	10:25	1	1157 = COMMUNICATION FAIL RESTORE	
Thu 02/09/2006	10:25	1	1130 = FAIL TO COMMUNICATE TROUBLE	
Thu 02/09/2006	10:23	1	1174 = AREA DISARMED	USER 1 (User 1)
Thu 02/09/2006	10:23	1	1144 = RESTORE FIRE ZONE	Carbon Monoxide (Zone 15)
Thu 02/09/2006	10:23	1	1173 = AREA ARMED	USER 1 (User 1)
Thu 02/09/2006	10:23	1	1300 = EXCEPTION OPENING	USER 1 (User 1)
Thu 02/09/2006	10:23	1	1001 = FIRE ALARM	Carbon Monoxide (Zone 15)
Thu 02/09/2006	10:14	1	1240 = ZONE UNBYPASSED	Garage Entry Doo (Zone 2)
Thu 02/09/2006	10:14	1	1239 = ZONE BYPASSED	Garage Entry Doo (Zone 2)
Thu 02/09/2006	10:14	1	1240 = ZONE UNBYPASSED	Garage Entry Doo (Zone 2)
Thu 02/09/2006	10:14	1	1239 = ZONE BYPASSED	Garage Entry Doo (Zone 2)
Thu 02/09/2006	10:11	1	1364 = REMOTE PROGRAMMING ENDS	
Thu 02/09/2006	10:11	1	1363 = REMOTE PROGRAMMING	
Thu 02/09/2006	10:10	2	1174 = AREA DISARMED	USER 1 (User 1)
Thu 02/09/2006	10:10	2	1173 = AREA ARMED	USER 1 (User 1)
Thu 02/09/2006	10:09	1	1364 = REMOTE PROGRAMMING ENDS	
Thu 02/09/2006	10:07	1	1363 = REMOTE PROGRAMMING	
Thu 02/09/2006	10:06		1367 = SYSTEM START UP	Control

Figure 3

The event log displays information for each event including the date and time the event occurred and area the event occurred in. It also displays additional information in the “Extended Data” column. This could be the user who armed the system, the zone that caused an alarm, etc.

You can view the newest 20 events or the entire log by clicking the corresponding button. To return to the security screen click the close button.

## Switching to Other Keypads

The security screen displays information based on keypads that are programmed in the system. The function keys on each keypad may be assigned different functions and the keypad may also be assigned to a different area. To switch between keypads click on the logo in the upper left hand corner of the screen. This will display the setup screen as shown in Figure 4. The drop down box on the page setup screen labeled Keypad Name contains the names of all the keypads programmed in the system. Select the keypad you wish to view and then click on the security button to return to the security screen. It will now display information based on the keypad you have chosen.

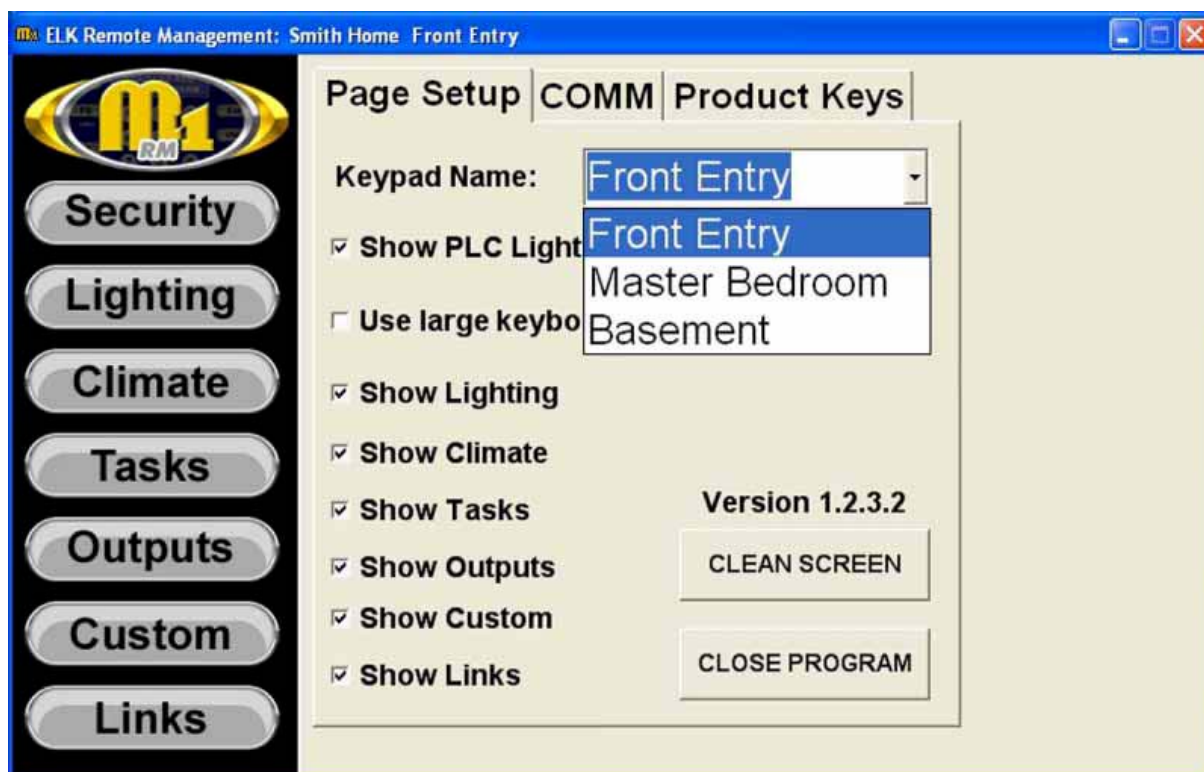


Figure 4



## Lighting

To access the lighting pages click on the Lighting button on the left side of the screen. Each page allows you to turn lights on/off, adjust bright/dim levels, etc. for up to 6 lights.



Figure 5

Lights can be controlled using the Light buttons and the sliders. Click on the Light button to turn the light on and off. To adjust the bright/dim level of the light adjust the slider.

**NOTE: Not all light formats support the use of the sliders.**

Each page displays 6 lights at a time. Buttons located at the top of the screen allow you to scroll through the pages. If there are not more than 6 lights programmed in the system, these buttons will not appear.

- << Goes to Page 1
- < Goes Back 1 page
- > Goes Forward 1 page
- >> Goes to Last Page

**IMPORTANT:** Only lights that have the proper equipment and are interfaced to the M1/EZ8 system may be controlled. The current state of the light may not always be accurate, particularly when there are other controllers or automation devices installed or the lighting devices do not provide their status.

**Individual Lighting Pages:** These pages are accessed by clicking on the name of the light shown on the right side of the screen as shown in Figure 5. The individual lighting screen (shown in Figure 6) allows lights to be turned on/off or set to a certain level. Lights can also be controlled for a duration of time. This screen also provides some extended options for certain types of lighting.



Figure 6

**Durations-** To turn a light on or off for a certain durations of time, select the appropriate time category (hours, minutes, or seconds) and use the number keys to enter the time. Then select the ON or OFF button.

## **Extended Lighting Options (Not available on all systems)**

These commands are primarily intended for use with devices that adhere to the X-10 protocol. X-10 defines 256 total lights divided as:

16 Lights (Units) x 16 House Codes

The “All” commands pertain to a specific single housecode, activating all 16 lights (units) within that housecode. Bright and Dim commands pertain only to devices that adhere to the X-10 protocol and support “dimmer” commands.

### The X-10 Protocol

**Bright and Dim Keys-** These buttons allow you to adjust the level of brightness only for lights that adhere to the X-10 protocol

- ⤴ Brightens Light by 2 steps each time it is pressed (up to 15 steps)
- ⤴ Brightens Light by 1 step each time it is pressed (up to 15 steps)
- ⤵ Dims Light by 1 step each time it is pressed (up to 15 steps)
- ⤵ Dims Light by 2 steps each time it is pressed (up to 15 steps)

**All Lights On-** Click this button to turn all lights on for the House Code of the light that you are viewing.

**All Lights Off-** Click this button to turn all lights off for the House Code of the light that you are viewing.

**All Units Off-** Click this button to turn all units off for the House Code of the light you are viewing. This will turn off all lights and appliance modules.

NOTE: The House Code that will be controlled with these buttons is displayed under the number pad.

## Climate

To access the climate pages, click on the Climate button on the left side of the screen. The Climate pages allow you to control thermostats connected the system and view the current temperature of the keypads and temperature sensors connected to the system.

### Thermostat Page

The first page to appear when you click on the climate button is the thermostat page (shown in Figure 7).

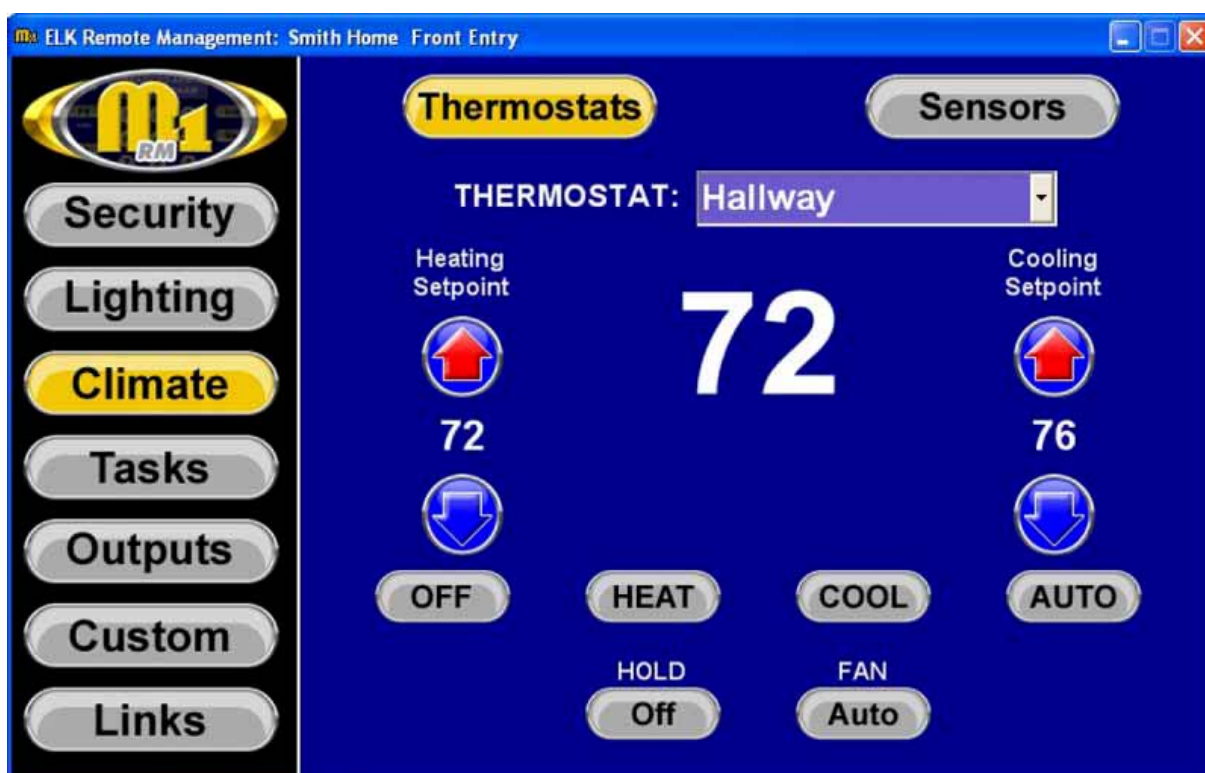


Figure 7

The current temperature at the thermostat is displayed in the center of the page.

**Thermostats Drop Down Box-** Allows you to select additional thermostats that you may have with your system.

**Heating Setpoint-** Use the up and down arrows to adjust the Heating setpoint. The current setpoint is displayed between the up and down buttons.

**Cooling Setpoint-** Use the up and down arrows to adjust the Cooling setpoint. The current setpoint is displayed between the up and down buttons.

**Off, Heat, Cool, Auto Buttons-** These buttons allow you to change the thermostat mode.

**Hold-** This button allows you turn the Hold setting On or Off.

**Fan-** This button allows you to change the fan setting to On, Off, or Auto

## Sensors

If you have other temperature sensors attached to your system click on the sensors button at the top of the page. This will display the current temperature of all the keypads and temperature sensors connected to the system as shown in Figure 8. The system can have a maximum of 16 keypad and 16 temperature probes.

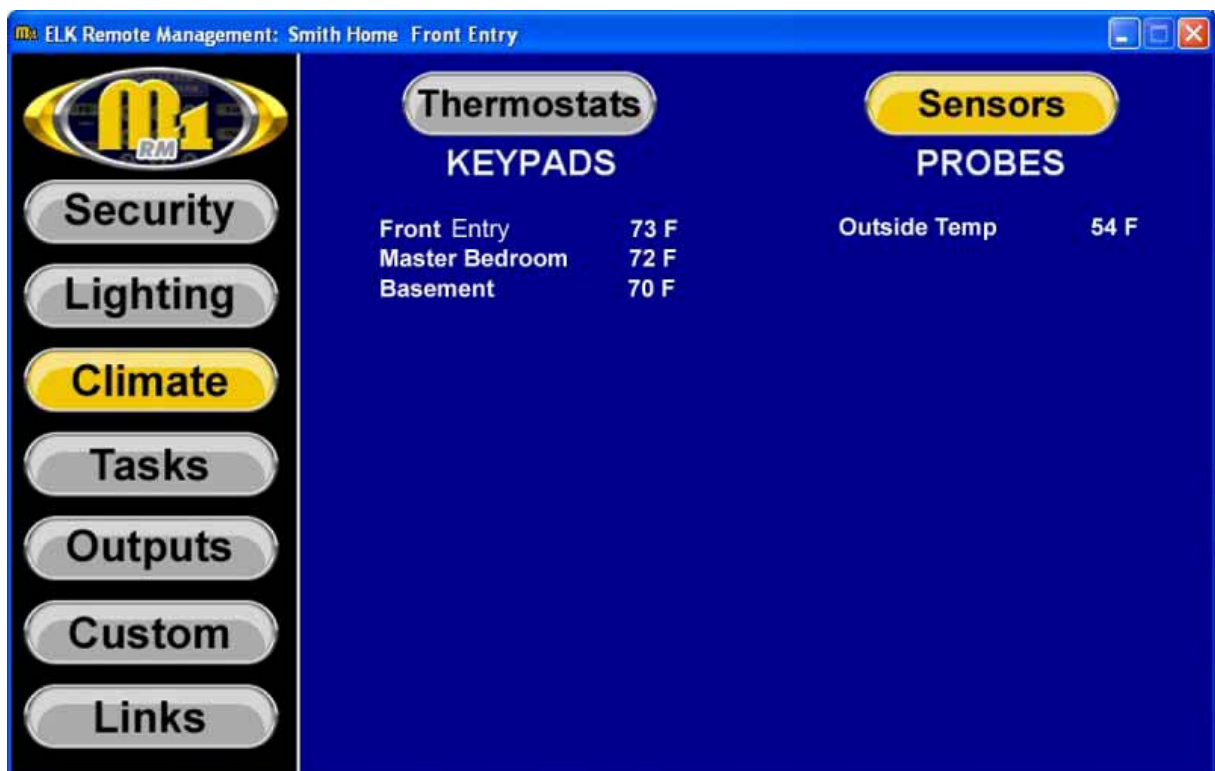


Figure 8

## Tasks

To access the task pages (shown in Figure 9) click on the Tasks button on the left side of the screen. This screen allows you to activate up to tasks that have been programmed in the system. Up to 12 tasks are displayed on each page



Figure 9

To activate a task click the button beside the task name.

Each page will display up to 12 tasks. If more than 12 tasks are programmed in the system, the buttons at the top of the screen allow you to scroll through the pages.

- << Goes to Page 1
- < Goes Back 1 page
- > Goes Forward 1 page
- >> Goes to Last Page

If there are not more than 12 tasks programmed in the system, these buttons will not appear.

## Outputs

To access the output pages click on the Outputs button located on the left side of the screen. The Output pages (shown in Figure 10) allow you to control up to 12 outputs per page, which may be used to open/close the garage door, open/close blinds, turn sprinklers on/off, etc.



Figure 10

An output can be turned on or off by clicking the button beside of the output name. The button will be illuminated when the output is on.

Each page will display up to 12 outputs. If more than 12 outputs are programmed in the system, the buttons at the top of the screen allow you to scroll through the pages.

- << Goes to Page 1
- < Goes Back 1 page
- > Goes Forward 1 page
- >> Goes to Last Page

If there are not more than 12 outputs programmed in the system, these buttons will not appear.

## Individual Output Pages

These pages can be accessed by clicking on the output name (as shown in Figure 10). The individual output page (shown in Figure 11) allows an output to be turned on for a specific duration of time.

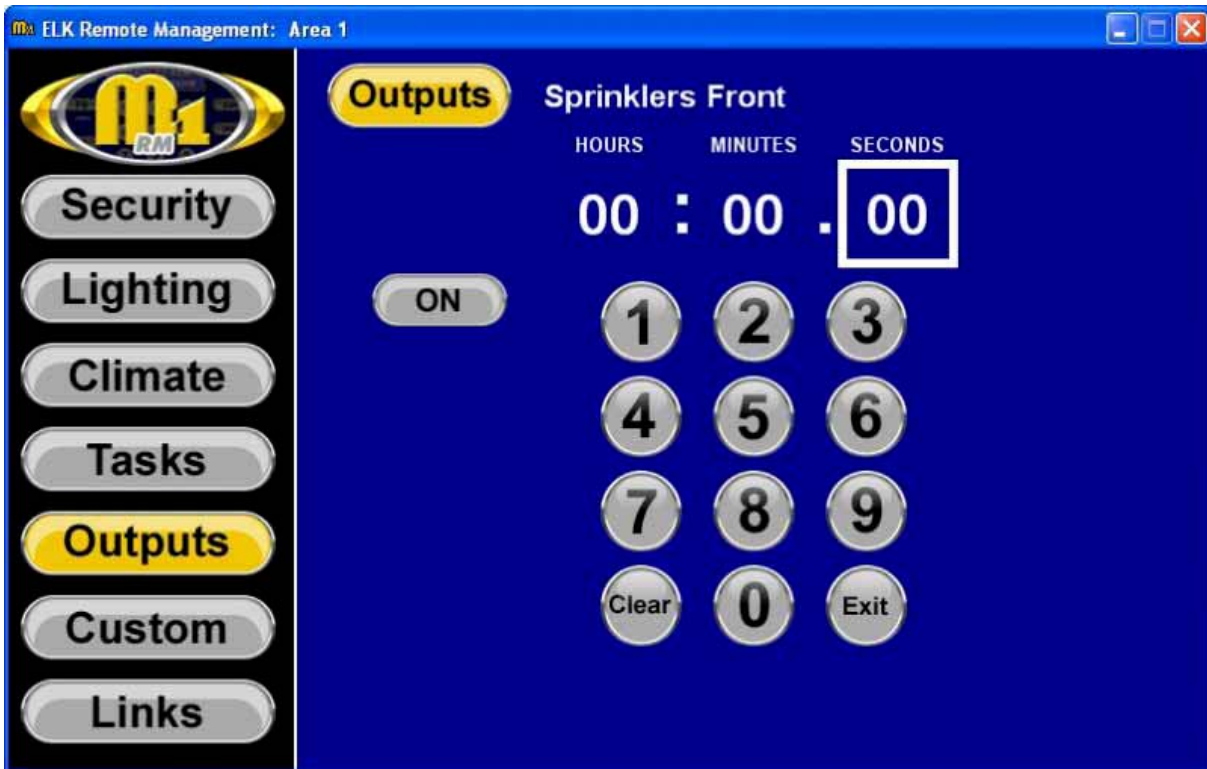


Figure 11

To turn an output on for a certain duration of time, select the appropriate time category (hours, minutes, or seconds) and use the number keys to enter the time. Then click the ON button.



## Custom Settings

To access the custom setting pages click on the Custom button on the left side of the screen. Each Custom Setting page allows you to make adjustments to up to 6 custom settings programmed into the system. Custom settings are used to make adjustments to certain aspects of the way your system is programmed. For instance, you may want to adjust the time that the lights or sprinklers come on, or how long they stay on.



Figure 12

Each page will display 6 custom settings at a time. If more than 6 custom settings are programmed in the system, the buttons located at the top of the screen allow you to scroll through the pages.

- << Goes to Page 1
- < Goes Back 1 page
- > Goes Forward 1 page
- >> Goes to Last Page

If there are not more than 6 custom settings programmed in the system, these button will not appear

The Custom Setting pages display the current setting to the right of the custom setting name (as shown in Figure 12). To make an adjustment to a custom setting click on the button next to the custom setting name. This will display an individual page for the setting (shown below in Figure 13).



Figure 13

Use the number pad to make the desired adjustment to the setting. A custom setting may be a timer, a time of day, or a number. If the setting is a timer, this page will allow you to change the duration of the timer in hours, minutes, and/or seconds. If the setting is a time of day, this page will allow you to choose a different time of day in the 12 hour format with AM or PM indications. If the setting is a number, this page will allow you to enter a new number between 0 and 65,535.

## Links

To access the links screen click on the Links button on the left side of the screen. The Links screen (shown below in Figure 14) allows you to access frequently visited websites. An Internet connection is required to use the Links feature. For information on how links are set up, refer to the ELKRM setup guide.

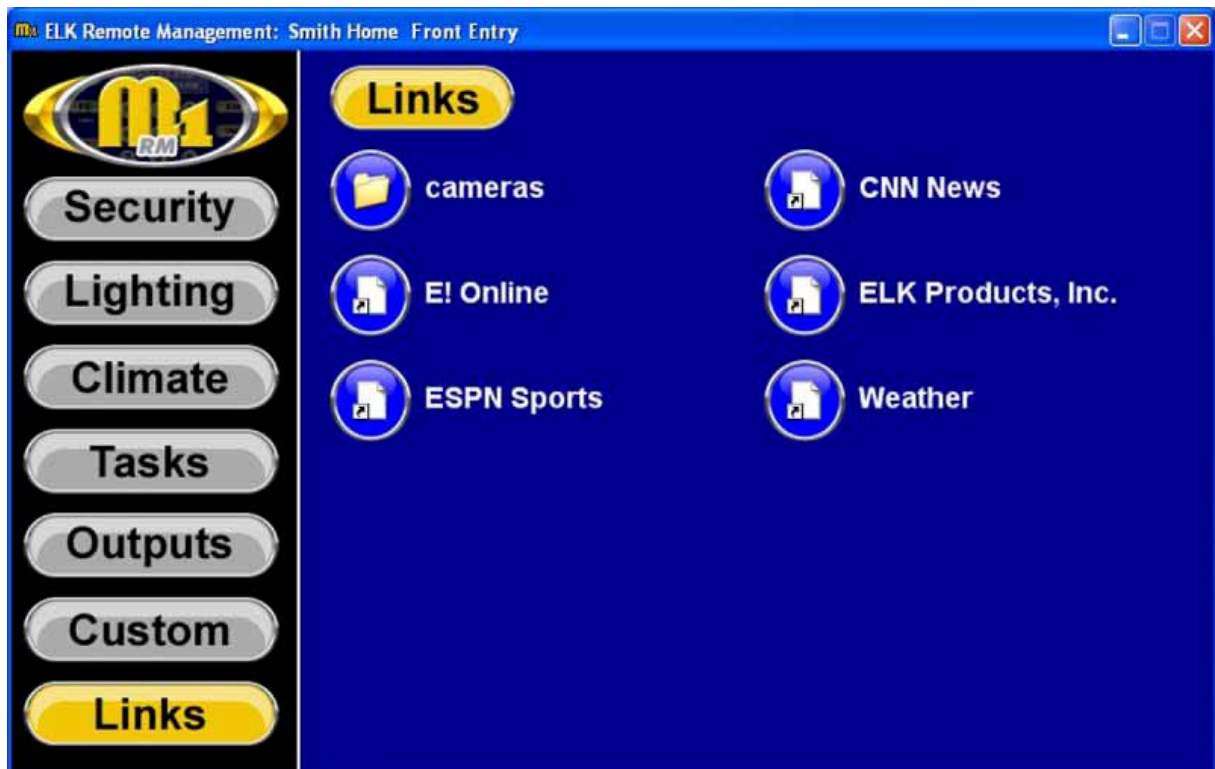


Figure 14

To access a webpage click on the button beside of the link name. Links may be organized in folders. Click on the button beside the folder name to open the folder.

Each page will display up to 12 links. If more than 12 links are programmed in the system, the buttons at the top of the screen allow you to scroll through the pages. If there are not more than 12 links programmed in the system, these buttons will not appear.

- << Goes to Page 1
- < Goes Back 1 page
- > Goes Forward 1 page
- >> Goes to Last Page

## Cleaning the Screen (For touch sensing screens only)

If ElkRM is installed on a touchscreen, the Clean Screen option provides you with a blank screen, allowing you to clean the screen without unintentionally pressing any buttons. To access the Clean Screen option click on the logo in the upper left corner of the screen. This will display the settings screen. Click the Clean Screen button located in the lower right corner of the screen as shown below In Figure 15.



Figure 15

A blue screen with a 30 second count down will be displayed. After 30 seconds the display will return to the page setup screen. Click on one of the category buttons on the left side of the screen to display the corresponding screen.

For information on the other options available on the setup screens, please refer to the ElkRM setup guide.



---

*Security Products*