

opentec

RPDA 5 User Guide (April 2008)

Covers the following Rugged Personal Data Assistant models:

RPDA 5-I (industrial/commercial model)

Openfire RPDA 5-M (Mil-spec model)



For when the going gets beyond tough

Copyright Notices

Revision Date: April 8, 2008

The following are registered trademarks of Opentec Solutions Pty Ltd:

- *'RPC' Rugged Portable Computer*
- *'Openfire RPC' Mil-Spec Rugged Portable Computer*
- *'RPT' Rugged Portable Tablet*
- *'Openfire RPT' Mil-Spec Rugged Portable Tablet*
- *'Jackaroo RPT' Rugged Portable Tablet*
- *'RPDA' Rugged Personal Data Assistant*
- *'Openfire RPDA' Mil-Spec Rugged Personal Data Assistant*
- *'Jillaroo' Rugged Personal Data Assistant*
- *'Perente' Portable Tablet*

No part of this publication may be processed; such as reproduced, transmitted, transcribed, stored in a retrieval system, translated into any computer language in any form, or by any means of electronic, mechanical, magnetic, optical, chemical, or others without the prior written permission of the manufacturer.

Trademark Acknowledgments

Windows is registered trademarks of Microsoft Corp.

Intel® Core™2 Duo processor is the registered trademark of Intel Corp.

All product and company names, trade names or trademarks are the property of their respective owners.

Disclaimer

Due to on-going product development, product specifications, features, performance, specifications, etc, might vary from those published here. Always check with Opentec or your authorised Opentec Agent to establish product specifications when evaluating our products, and before ordering.

The manufacturer reserves the right to revise this publication and to make changes to the contents here of without obligation to notify any person of such revision or changes.

The manufacturer makes no representations or warranties, either expressed or implied, about the contents and specifically disclaims any warranties as to merchantability or fitness for any particular purpose. Any of the software described in this manual is sold or licensed "as is". Should the programs prove defective following purchase, the buyer (and not the manufacturer, its distributor, or its dealer) assumes the entire cost of all necessary servicing, repair and any incidental or consequential damages resulting from any software defects.

Copyright © 2008 Opentec Solutions Pty Limited. All rights reserved.

EMC and Safety Notices

CE

Products with the CE Marking comply with both the EMC Directive (89/336/EEC) and the Low Voltage Directive (73/23/EEC) issued by the Commission of the European Community. Compliance with these directives implies conformity to the following European Norms:

EN55022	(CISPR 22) Radio Frequency Interference
EN55024	(EN61000-4-2, EN61000-4-3, EN61000-4-4, EN61000-4-5, EN61000-4-6, EN61000-4-8, EN61000-4-11, EN61000-3-2, EN61000-3-3) Generic Immunity Standard
EN60950	(IEC950) Product Safety

R&TTE (CE) Manual Regulatory Requirement (WLAN - IEEE 802.11b/g)

802.11b/g Restrictions:

European standards dictate maximum radiated transmit power of 100mW EIRP and frequency range 2.400-2.4835 GHz. In France, the equipment must be restricted to the 2.4465-2.4835 GHz frequency range and must be restricted to indoor use.

CE Declaration of Conformity



Is herewith confirmed to comply with the requirements set out in the Council Directive on the approximation of the laws of the member states relating to Electromagnetic Compatibility (89/336/EEC), Low-voltage Directive (73/23/EEC) and the Amendment Directive (93/68/EEC), the procedures given in European Council Directive 99/5/EC and 89/336/EEC.

The equipment was passed. The test was performed according to the following European standards.

EN 300 328 V.1.4.1 (2003-04)

EN 301 489-1 V.1.4.1 (2002-04)/EN 301 489-17 V.1.2.1 (2002-04)

EN 50371:2002

EN 60950:2000

FCC Regulations:

This device has been tested and found to comply with the limits for a Class B digital device, pursuant to Part 15 of the FCC Rules. These limits are designed to provide reasonable protection against harmful interference in a residential installation. Operation is subject to the following two conditions:

- (1) This device may not cause harmful interference.
- (2) This device must accept any interference received, including interference that may cause undesired operation.

This equipment generates, uses and can radiate radio frequency energy and, if not installed and used in accordance with the instructions, may cause harmful interference to radio communications. However, there is no guarantee that interference will not occur in a particular installation. If this equipment does cause harmful interference to radio or television reception, which can be determined by turning the equipment off and on, the user is encouraged to try to correct the interference by one or more of the following measures:

- Re-orient or relocate the receiving antenna.
- Increase the separation between the equipment and receiver.
- Connect the equipment into an outlet on a circuit different from that to which the receiver is connected.
- Consult the dealer or an experienced radio/TV technician for help.

Changes or modifications not expressly approved by the party responsible for compliance could void the user's authority to operate the equipment.

This device complies with FCC radiation exposure limits set forth for an uncontrolled environment. In order to avoid the possibility of exceeding the FCC radio frequency exposure limits, human proximity to the antenna shall not be less than 20cm (8 inches) during normal operation.

RF Exposure Information (SAR)

This device meets the government's requirements for exposure to radio waves. This device is designed and manufactured not to exceed the emission limits for exposure to radio frequency (RF) energy set by the Federal Communications Commission of the U.S. Government.

The exposure standard employs a unit of measurement known as the Specific Absorption Rate, or SAR. The SAR limit set by the FCC is 1.6W/kg. Tests for SAR are conducted using standard operating positions accepted by the FCC with the EUT transmitting at the specified power level in different channels.

Regulatory Information/Disclaimers

Installation and use of this computer must be in strict accordance with the instructions included in the user documentation provided with the product. Any changes or modifications (including the antennas) made to this device that are not expressly approved by the manufacturer may void the user's authority to operate the equipment.

The manufacturer is not responsible for any radio or television interference caused by unauthorized modification of this device, or the substitution of the connecting cables and equipment other than manufacturer specified. It is the responsibility of the user to correct any interference caused by such unauthorized modification, substitution or attachment. Manufacturer and its authorized resellers or distributors will assume no liability for any damage or violation of government regulations arising from failing to comply with these guidelines.

Important Note

FCC RF Radiation Exposure Statement:

This equipment complies with FCC RF radiation exposure limits set forth for an uncontrolled environment. This device and its antenna must not be co-located or operated with any other antenna or transmitter.

UL, TÜV

AC Adapter (TÜV includes EN60950 LVD)

Power Conservation

This computer consumes much less power than conventional computers. However, power consumption may be reduced by properly configuring the Power Management Setup. It is recommended the power saving functions be enabled even when not running on battery power. Please read the power saving features and the setting procedures described in this manual for setting your computer.

Environmental Information, Material Safety and Recycling

Caution: *Risk of explosion if battery is replaced by an incorrect type.
Dispose of used batteries according to the instructions.*

All materials used in the construction of this equipment are recyclable or environmentally friendly.

Please recycle the packing materials, and at the end of the product's life, all other materials by local regulations.

Please refer "Material and Recycling" for the contents of the materials.

- The equipment may still contain tiny amount of hazardous substances for health and environment, though those are below control level.
- To avoid spreading such substances into the eco system, and to minimize the pressure on the natural, you are encouraged to use the appropriate take-back. Those will reuse or recycle most of the materials in a sound way after end life.
- The crossed bin symbol indicates proper disposal is required.
- For more information on collection, reuse and recycling, please consult local or regional waste administration.
- You can also contact the dealer for more information on the environmental details of the equipment.

CONTENTS

GETTING STARTED	1
UNPACKING	1
QUICK CHECK.....	2
CONTROLS, INDICATORS, AND PORTS	2
OPERATING ENVIRONMENT AND RUGGEDNESS	4
COMPONENTS AND FUNCTIONS	5
AC ADAPTER.....	5
BATTERY	5
CHARGE BATTERY.....	5
SWAP BATTERY	5
FIX THE STYLUS WITH TETHER.....	6
CRADLE (OPTIONAL)	7
PCMCIA SLOT	9
SD SLOT	9
BASIC OPERATION	10
GET HELP.....	10
CALIBRATE TOUCH SCREEN.....	10
ADJUST VOLUME.....	10
SET BUTTON FUNCTIONS.....	10
TODAY SCREEN	10
SEARCH A FILE	10
MANAGE CERTIFICATES.....	10
INPUT	10
MENUS	10
OWNER INFORMATION	10
PASSWORD.....	10
SOUNDS & NOTIFICATIONS	11
CLOCK & ALARMS	11
MEMORY	11
POWER.....	11
REMOVE PROGRAMS.....	11
GSM/GPRS (OPTION).....	15
4-2 4-3 4-4.....	16
BLUETOOTH (OPTION)	17
GPS (OPTION)/GPS EXTERNAL ANTENNA (OPTION).....	24
SPECIFICATIONS	25
CPU	25
MEMORY	25
DISPLAY	25
TOUCH SCREEN.....	25
I/O PORTS	25
SYSTEM UNIT DIMENSIONS AND WEIGHT	25
AC ADAPTER	25
BATTERY	25
MATERIALS AND RECYCLING	26
MAINTENANCE / SERVICE	27
CLEANING.....	27
TROUBLESHOOTING.....	27
RMA SERVICE	ERROR! BOOKMARK NOT DEFINED.

GETTING STARTED

Unpacking

The following components come with your handheld computer. If anything is missing or damaged, please notify the dealer immediately.

1. Handheld computer unit
2. AC adapter
3. AC power cord
4. User's guide
5. Companion CD
6. Data sync cable (USB)
7. Spare stylus (with tether)

Quick Check

- Attach the AC adapter to AC outlet. LED on adapter indicates the power is ready.
- Insert the battery and then plug in the adapter to handheld computer. Charge LED will light up till the battery is full charged. Charge time is approximately 4 hours.
- **It's recommended that battery is fully charged before setting up.**
- Press the power button momentarily to turn ON (the most upper-right button is power button).
- Tap **Start** → **Programs** to try some programs.
- Press power button momentarily to turn OFF.

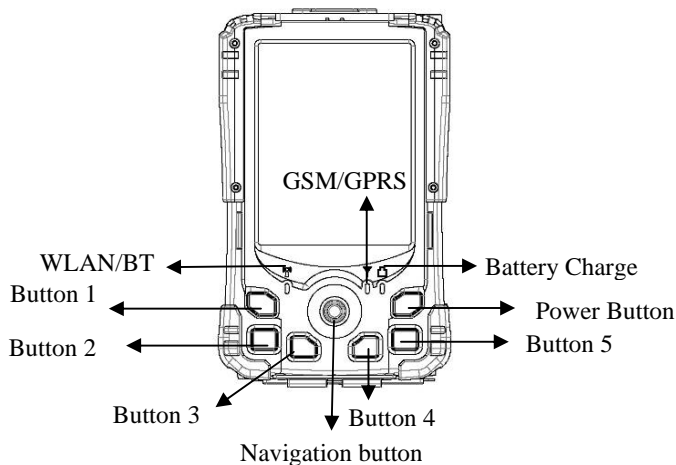
Notice:

The handheld computer is always powered. Even main battery is removed there is internal backup battery to sustain memory data (for >5 minutes approximately). The power button only activates suspend (OFF = suspend on this manual).

Please check battery status regularly and recharge when necessary.

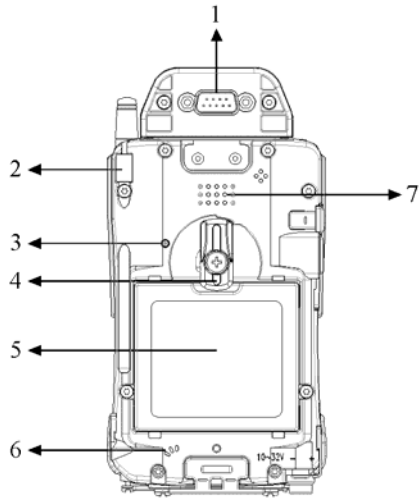
Controls, Indicators, and Ports

Front:



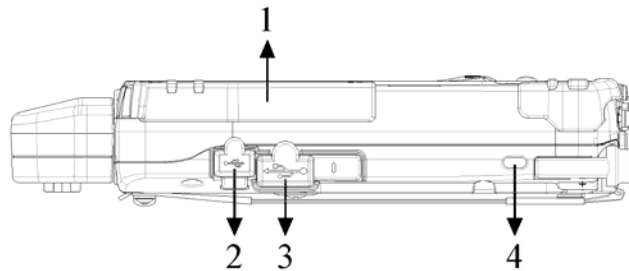
1. **Button 1** (Wireless or Flight button)
Turn ON/OFF the wireless device (Option: WLAN, Bluetooth, Phone, GPS)
2. **Button 2** (User programmable or Dial button on Phone edition)
3. **Button 3** (User programmable)
4. **Navigator button**
[Left], [Right], [Up], [Down] 4 directions
[Enter] at the centre
5. **Button 4** (User programmable)
6. **Button 5** (User programmable or Hang up button on Phone edition)
7. **Power Button**
Suspend or Wake up the system.
8. **Battery charge indicator** (Charging: ON, Full: OFF)
9. **GSM/GPRS indicator** (green)
10. **WLAN/Bluetooth indicator** (blue)

Rear: (drawing shows optional GPS)



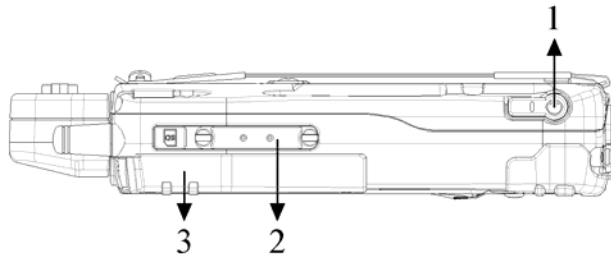
1. Serial port DB9 Connector
2. Stylus
3. Reset Button
4. Battery knob
5. Battery
6. Microphone
7. Speaker (under hand strap)/
Phone receiver

Left:



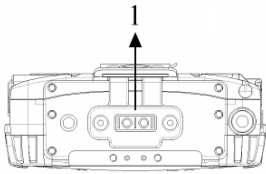
1. Antenna of wireless device
2. USB client port (data sync with the computer)
3. USB Host port
4. Kensington lock slot

Right: (drawing shows optional GPS)



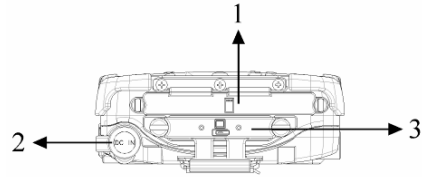
1. Microphone/Earphone jack
2. SD I/O slot (Secured Digital card and device)
3. 2nd antenna (Optional)

Top:



1. Serial port or GPS antenna

Bottom:



- 1 PCMCIA slot (not available on I-version)
One PCMCIA type II slot
CF (Compact Flash card) will be available
PCMCIA-to-CF adapter
- 2 DC jack
- 3 Cradle docking connector
Connection to cradle

Operating Environment and Ruggedness

If it is necessary to work in a hostile environment, please make sure all ports are well protected from dust, moisture, or water. Proper isolation from extreme hazardous exposure is recommended.

The computer is designed with rugged features of vibration, shock, dust, and rain/water protection. However, it is still necessary to provide appropriate protection while exposing to harsh environments.

All connectors will decay or corrode if exposed to water or moisture. Corrosion is accelerated if the power is ON. Please take proper water-resistant measures for cable connections.

The DC jack is sealed type which may be operated with water splashing while DC power cord attached. All other port caps should be in place when no cable is attached. Regularly maintain the computer by cleaning dust, water, etc. will help keeping it in optimal condition.

There is no isolated compartment for SD slot, PCMCIA slot, and docking. These ports must be tightly sealed while working with dust and water.

Notice: At low temperatures both the LCD and battery activity are affected. The unit may take a few minutes to normalise but with reduced battery capacity.

COMPONENTS AND FUNCTIONS

AC adapter

When using the AC adapter:

- Use a properly grounded AC outlet.
- Use one AC outlet exclusively for the computer. Having other appliances on the same line may cause interference.
- Use a power strip with built-in surge protection.

The AC adapter automatically detects the AC line voltage (110V or 220V) and adjusts accordingly.

Battery

The computer will automatically switch to battery power when the external power source (AC adapter) is disconnected.

Battery Power Saving Tips

- Turn OFF the LCD backlight when it is visible with external light.
- Lower the intensity of the backlight.
- Shut down the computer when not to use for a longer time.

Battery Low

When the battery is nearly exhausted, the computer prompts a warning window. Once the Battery Low warning occurs, please do either or all of the following:

- Save and close the files you are currently working on.
- Plug in the AC adapter to recharge the battery.
- Swap a charged battery.

Charge Battery

- Plug in AC adapter will charge the battery automatically. If the battery is already full, the system will stop charge automatically.
- Dock to optional cradle + adapter will charge battery, too. Cradle has a battery slot to charge another battery simultaneously.
- Connect USB client cable to laptop or PC to charge battery but it needs approximately 15 hours for a full charge.
- The USB client connector on cradle has no battery charge function.

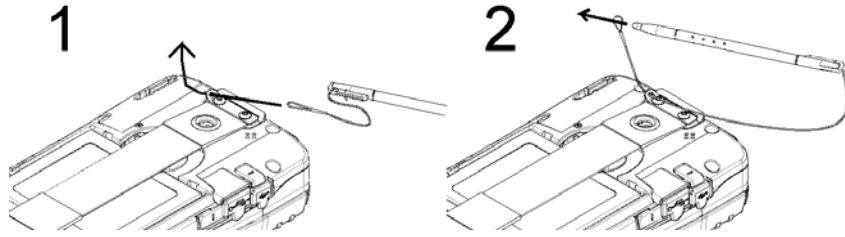
Swap Battery

Warning: Battery swap must be done within 5 minutes to avoid data loss.

To swap the battery:

- Turn power OFF.
- Turn the battery knob counter clockwise to loose the battery.
- Remove battery from compartment.
- Insert a new battery.
- Press the battery down and turn battery knob clockwise to lock it.
- Press power button to turn ON the computer.

Fix the stylus with tether

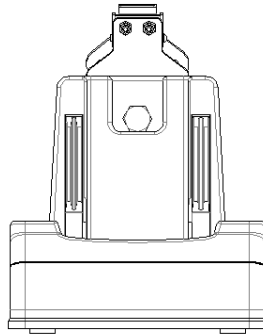


1. Tether wire through the fixing plate
2. Stylus through tether wire

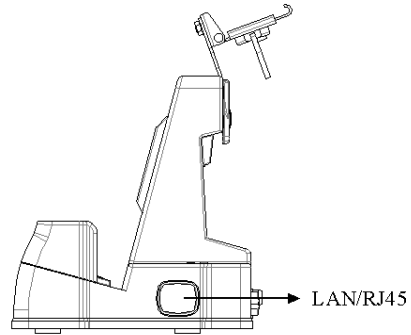
Cradle (Optional)

Cradle is the device for docking, port extension, and battery charging. AC adapter may attach directly to cradle and charges the computer battery as well as spare battery. There is a battery slot on the back of cradle to mount spare battery.

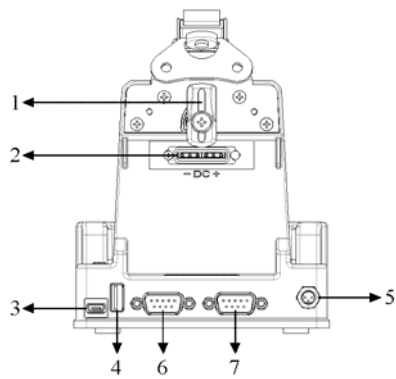
Front:



Right:



Rear



1. Battery Lock
2. Spare battery charger
3. USB Client (No charging function)
4. USB Host
5. DC IN
6. COM port
7. Optional COM port
(I-version cradle with DC in port only)

Mount the cradle:

1. Computer may dock either power is ON or OFF (recommend OFF).
2. Open the rubber cap on the docking connector.
3. Align the computer with cradle docking connector.
4. Firmly push the computer down to engage the docking connector.
5. Turn rotary latch to fix the computer.

Remove from the cradle:

1. Turn loose the rotary latch to release computer.
2. Pull away the computer either power is ON or OFF.

Mount spare battery: (spare battery is optional)

Perform the same procedure as mounting primary battery on computer. Cradle will charge computer and spare battery simultaneously.

PCMCIA Slot

The PCMCIA slot accepts one type-II card. Insert the card firmly into the slot and fix the rubber cover for water/dust protection.

To remove the card, push the eject button to pop out the card. The eject button can hide into the compartment by pushing it inward gently.

It may be necessary to load PCMCIA card driver to enable the function.

Note: If the computer is working with dust, moisture, or water, be sure to fix the PCMCIA rubber cap tightly with supplied screws.

SD Slot

The computer accepts one SD card (Secured Digital Card). Insert the card firmly into the slot and fix the rubber cover for water/dust protection. To remove the card, push the eject button to release it.

Note: If the computer is working with dust, moisture, or water, be sure to fix the PCMCIA rubber cap tightly with supplied screws.

BASIC OPERATION

Get Help


Tap **Start** → **Help**

Get the needed information from the list or the bundled CD.

Calibrate Touch Screen

Tap **Start** → **Settings** → **System** → **Screen** → **Align Screen** to calibrate.

Adjust Volume

Tap speaker icon  on the top bar and adjust the volume level as desired.

Set Button Functions

Tap **Start** → **Settings** → **Personal** → **Buttons**

Define the button functions from the selection list.

Today Screen

The today screen displays information of today's appointments and status icons, etc. Tap the information listed on today screen to execute the associated program. Tap **Start** → **Today** to enter Today screen.

Search a File

Tap **Start** → **Programs** → **Search**

In **Search**, enter the file name, word, or other information you want to search for. In **Type**, select a data type to help narrow your search. Tap **Search**, my document folder and subfolder are searched in the results list.

Manage Certificates

Tap **Start** → **Settings** → **System** → **Certificates**

Input your certificates. To delete a certificate, tap and hold it in the list, and then tap **Delete**.

Input

Tap **Start** → **Settings** → **Personal** → **Input**

Select the input method and option you want.

Menus

Tap **Start** → **Settings** → **Personal** → **Menus**

Select the items you want to appear on Start Menu.

Owner Information

Tap **Start** → **Settings** → **Personal** → **Owner Information**

Follow the descriptions. On the identification tab, enter your personal information. Tap **Options** select "**Show information when device is turn on**" your information will be displayed once power ON.

Password

Tap **Start** → **Settings** → **Personal** → **Lock**

Follow the descriptions to set password.

Sounds & Notifications

Tap **Start** → **Settings** → **Personal** → **Sound & Notification**

Set your favourite notifications.

Clock & Alarms

Tap **Start** → **Settings** → **System** → **Clock & Alarms**

Memory

Tap **Start** → **Settings** → **System** → **Memory**

Follow the descriptions.

The **main** tab displays the amount of memory the system has allocated to file and data storage versus the available memory.

The **storage card** tab displays how much memory is available on a storage card that is inserted in your device.

The **running programs** tab displays the list of the currently active programs. You can stop a program by selecting it on the list and tapping stop.

Power

Tap **Start** → **Settings** → **System** → **Power**

The **Battery** tab displays the amount of battery power remaining.

Remove Programs

Tap **Start** → **Settings** → **System** → **Remove Programs**

Follow the prompts to delete.

Reset the system

(Refer “**Controls, Indicators, and Ports**” for button location)

Soft Reset

Warning: Data not saved will be lost, and some settings will be lost (ex. Portrait / Landscape)

Try a soft reset when:

- The device does not respond when tapping the display.
- Or not respond when pressing a button.

To do a soft reset:

- Use the stylus to press the **reset button** on rear.
- The reset screen prompts.
- Automatically loading programs and data.
- Reset complete.

Hard Reset

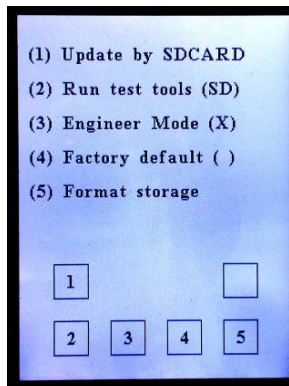
Warning: Data not saved will be lost, and some settings will be lost (ex. Portrait / Landscape)

Do a hard reset when:

- To restore the device to factory default settings.
- Forget the password and need to reset it.
- The device is experiencing severe operational problems, and has attempted a soft reset in vain.

To do a hard reset:

- Press and hold **power button** and use stylus to tap **reset button** on rear. (same procedure as soft reset)



<Clean Boot screen>

Clean Boot (Emergency Clear)

Warning: All data, either in RAM or saved in flash memory will be lost, all registry and user programs will be lost, and all settings will reset back to factory default. Only OS and factory bundled programs will remain intact.

When it is necessary to **remove all data and user programs completely**, perform Clean Boot.

- Press and hold **button 4** then tap **reset button** on rear. The Clean Boot screen prompts.
- Press **button 5** to format storage (to clean flash memory data). When done, press any button turns display back to Clean Boot screen.

- Use stylus to tap **reset button** on rear again to finish reset.
- Set parameters on prompted menus till complete.

Data Loss on Battery Swap

- Flash ROM: Saved data, registry, & user programs intact
- RAM: Data intact

(Internal backup battery usually can hold data for >5 minutes while primary battery swapping. Exceed this period RAM data may be lost)

Data Loss on Battery Exhaust

Same as Hard Reset

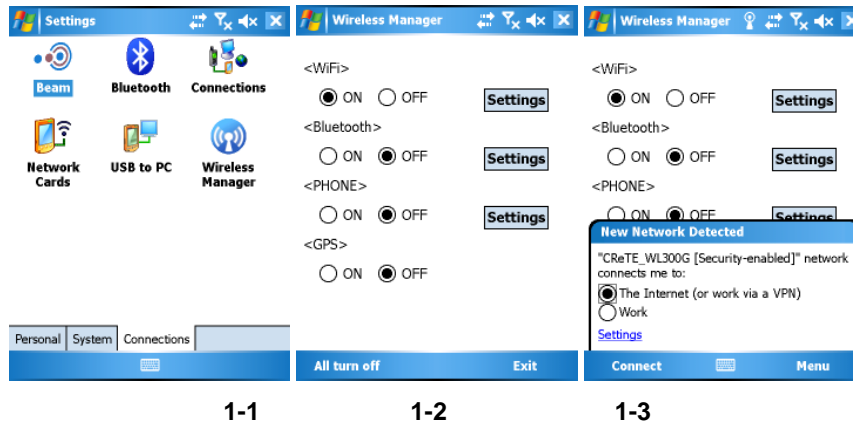
(Battery exhaust means both primary and internal back-up battery are exhausted)

Wireless LAN (Option)

1. Connect to Internet:

Turn on the Wireless Signals.

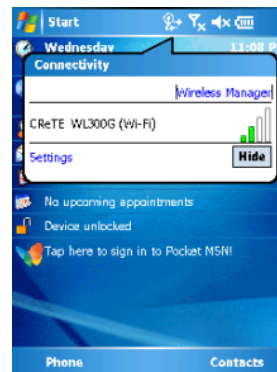
- Tap **Start** → **Settings** → **Connections**. (Or directly press ∇ button to enter Figure 1-2)
- Tap **Wireless Manager** and select, select **ON** for checkbox **<WiFi>**. (Figure 1-1 & 1-2). Wireless function is enabled.



- If access point detected, select the access point name you want to connect to, tap Connect, then the Configure Network Authentication window will appear. Select the Authentication and Data Encryption type of the access point, enter the Network key (If not provide automatically), tap Next (Figure 1-3, 1-4)
- If the settings accepted then the Wireless works. (Figure 1-5)



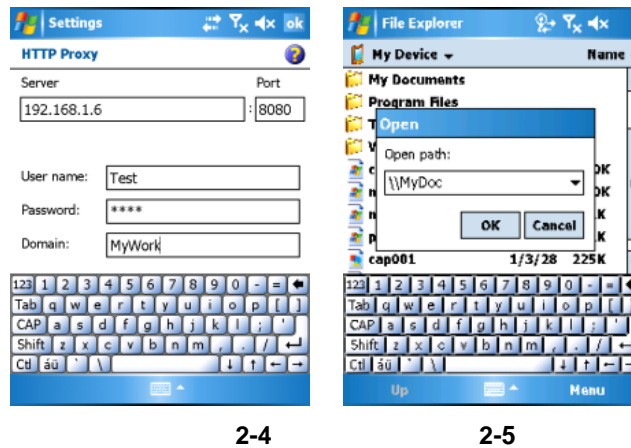
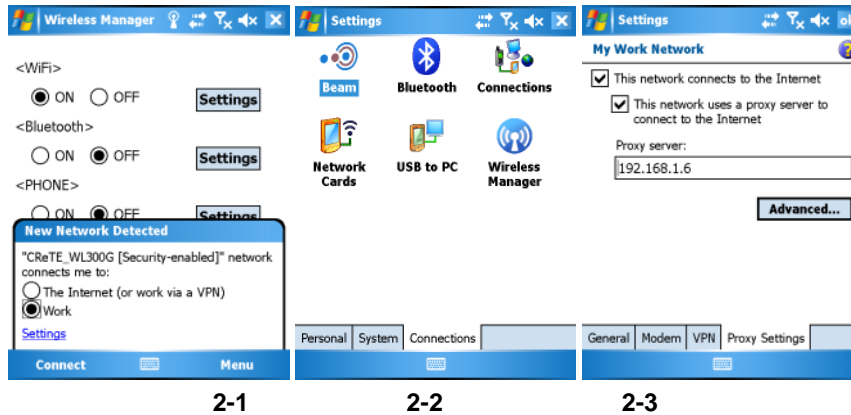
1-4



1-5

2. Access to the Intranet:

- Please refer to step 1.1 ~ step 1.4.
- Select **Work** option, if the intranet access is via Proxy Server, it needs to be set later. (Figure 2-1).
- Tap **Start** → **Settings** → **Connections** and tap **Connections** icon. (Figure 2-2)
- Select **Set up my proxy server** to setup proxy and other relative settings etc. (Figure 2-3 & 2-4)
- For example, if you connect to a computer (named MyDoc) in Client Microsoft Network, tap **Start** → **File Explorer**, select **Menu** → **Open Path** → **New Path**, it will pop up a dialog to prompt you enter the intranet path (\\MyDoc). (Figure 2-5)
- If you enter user name and password are correctly that you should be able to see intranet paths and files appear.



GSM/GPRS (Option)

GSM

Make sure the SIM card is mounted correctly then install the battery. SIM slot is under battery (Figure 3-1). Stick the label to seal the SIM slot (usually dealer had done it already).

Tap **Start** → **Settings** → **Connections**

Tap **Wireless Manager** and select "<PHONE>" then select checkbox to "ON". (Figure 3-2 & 3-3)

Press "GSM" button on the keypad and screen will pop up a dial-up dialog. (Note: If you have a PIN code for SIM card, that you must input the code to enable SIM access and phone function.) (Figure 3-4 & 3-5)

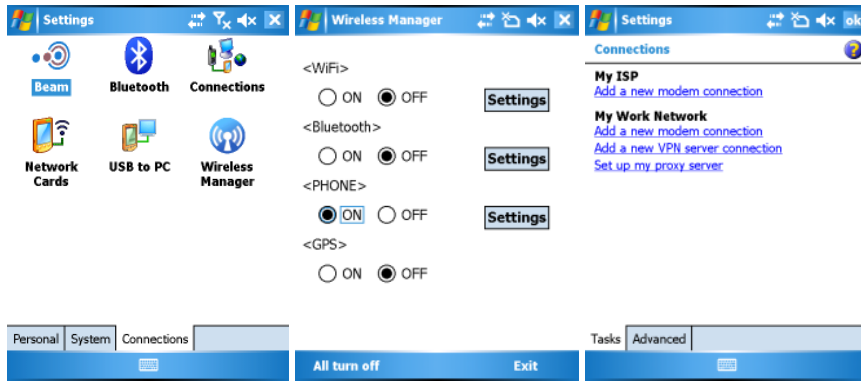
Now you can dial phone number to make a call.

Please note, both speaker and microphone are on the rear.

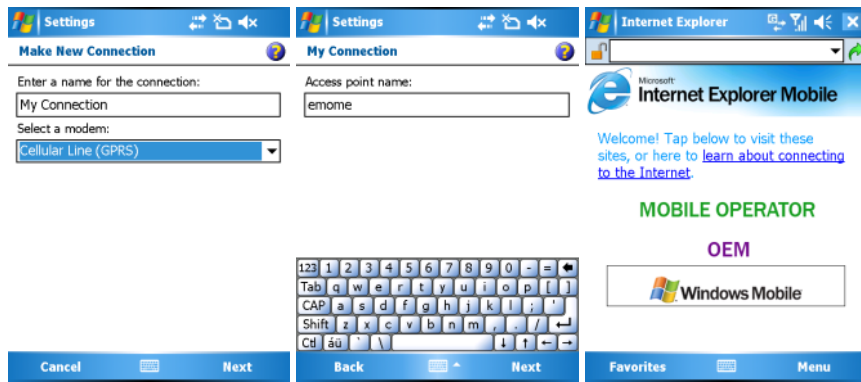


GPRS

- Tap **Start** → **Settings** → **Connections** and select "Add a new modem connection" under "My ISP" item. (Figure 4-1)
- Select modem type to "Cellular Line (GPRS)", tap next, and then enter the Access Point Name (APN) (Note: It is most important to enter this name, and the APN is different for each ISP provider). Tap next, enter user Name and Password if needed, then GPRS settings will be done. (Figure 4-2 & 4-3)
- Open Internet explorer, enter a URL for browse, the GPRS will connect automatically and the status will become Connected. (Figure 4-4)



4-1



4-2

4-3

4-4

Bluetooth (Option)

1. Beam File function:

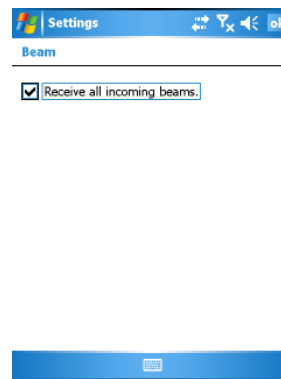
FTP Profile supports devices to transfer file.

Turn on Bluetooth via Wireless Manager.

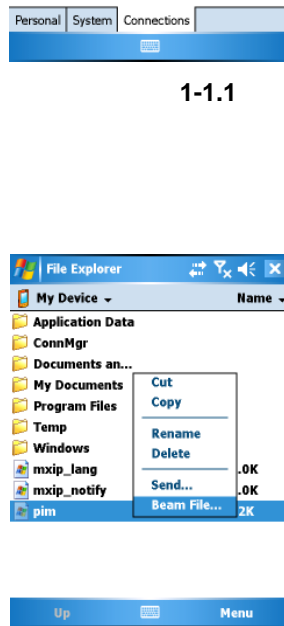
- Tap **Start** → **Settings** → **Connections** → **Bluetooth**. (Figure 1-1)
- Tap Beam and make sure that the “Receive all incoming beams” option is checked. (Figure 1-2)
- Tap **Start** → **Program** → **File Explorer**, tap and hold the file name to be copied, until the pop-up menu appears, tap “**Beam File**”. (Figure 1-3)
- Then you will see discoverable devices like following screen and tap the target device to begin file transfer process. (Figure 1-4)



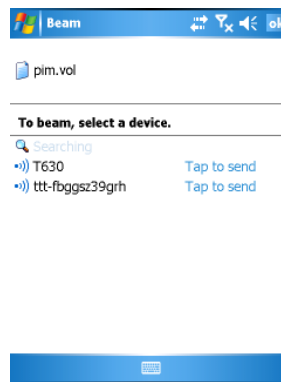
1-1.1



1-2



1-1.2



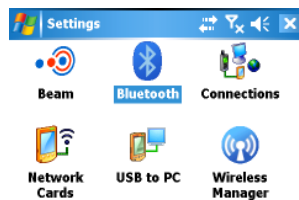
1-4

2. OBEX Profile:

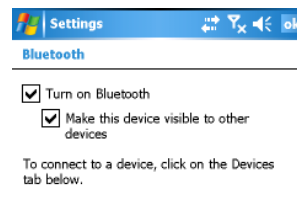
OBEX Profile supports devices to exchange data.

Turn on Bluetooth via Wireless Manager.

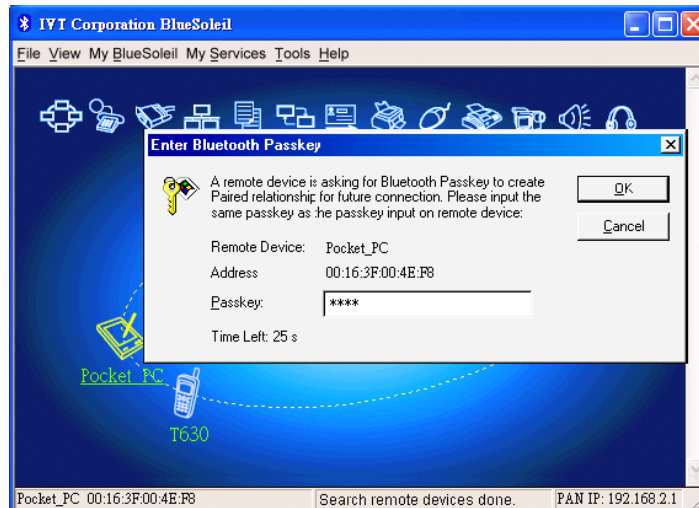
- Tap **Start** → **Settings** → **Connections**. (Figure 2-1)
- Tap Bluetooth and make sure that both **“Turn on Bluetooth”** and **“Make this device visible to other devices”** options are checked. (Figure 2-2)
- Launch Bluetooth Software (For this example: IVT Soleil) from PC. (Figure 2-3)
- Click Pocket_PC icon and click right mouse button then choice pairing option.
- To input pairing password with connected device. (Note: pairing password must same as remote device)(Figure 2-3)
- Meanwhile, device side will appear pairing password dialog as figure F2.4 and input password same as PC side. (Figure 2-4)
- Tap highlight icon **“OBEX Service”** from PC’s IVT Soleil program then transfer Naming card to device. (Figure 2-5)
- Finally, the device will prompt a message asking you to save the data to contact list or not. (Figure 2-6)



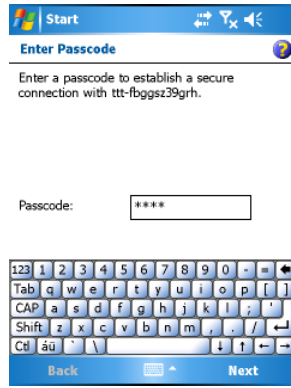
2-1.1



2-2



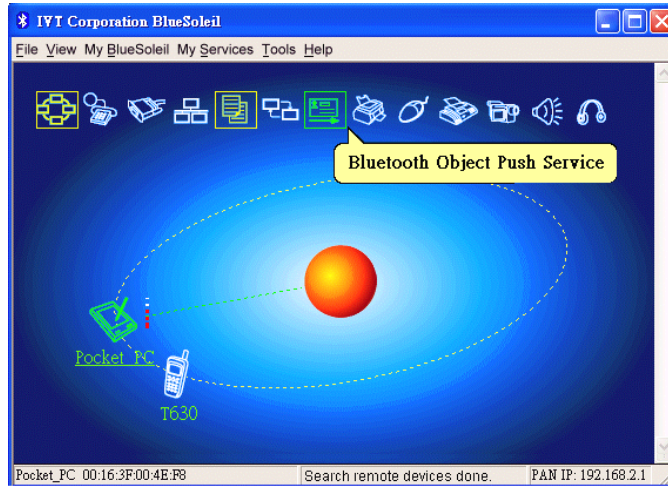
2-3



2-4



2-6



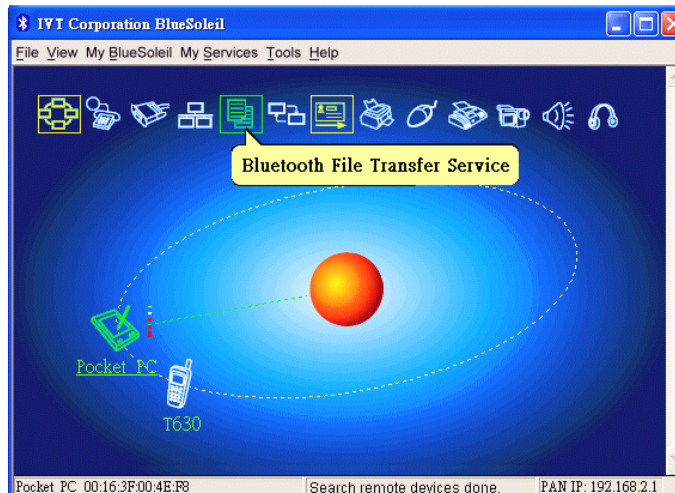
2-5

3. FTP Profile:

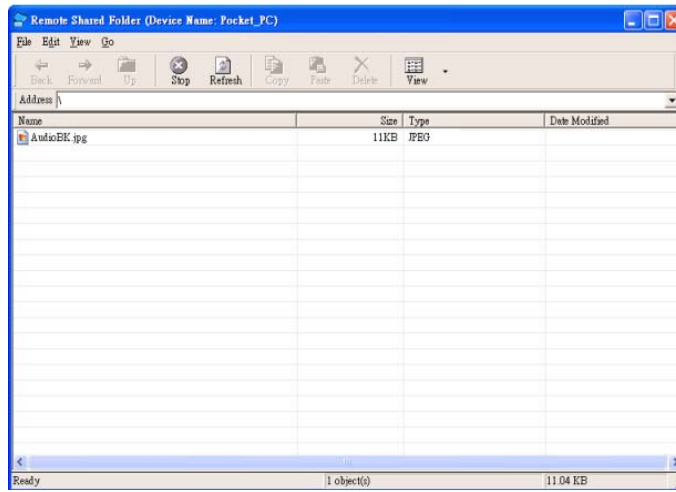
FTP Profile supports transfer file between Bluetooth devices.

Turn on Bluetooth via Wireless Manager.

- Please refer to step 2.1 ~ step 2.6.
- Tap highlight icon “**FTP Service**” from PC’s IVT Soleil program then transfer Naming card to device. (Figure 3-1)
- Finally, drag target file from File Explorer and drop to “Remote share folder” then file transfer will be done. (Figure 3-2).



3-1



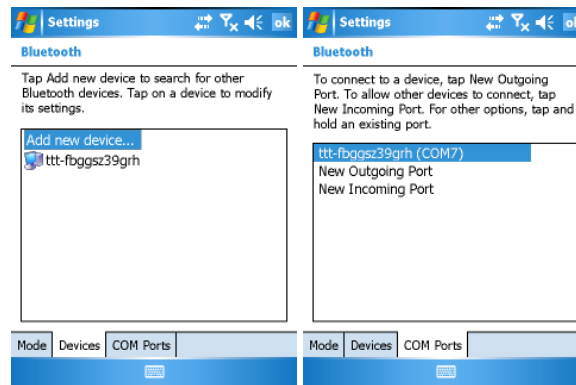
3-2

4. ActiveSync Profile:

ActiveSync Profile supports the use of ActiveSync over a Bluetooth connection.

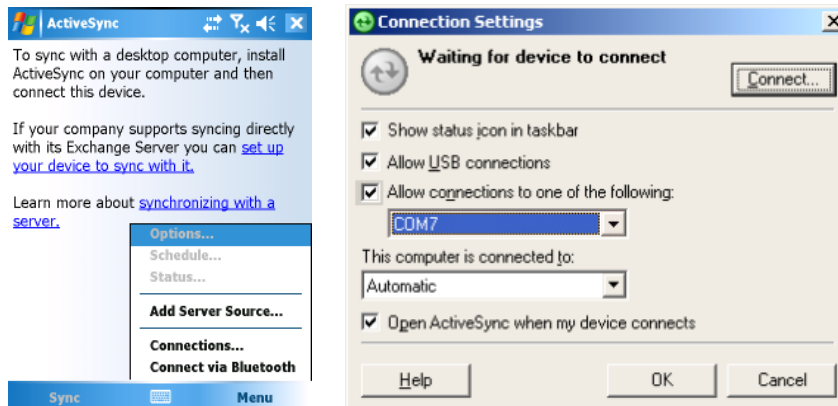
Turn on Bluetooth via Wireless Manager.

- Tap **Start** → **Settings** → **Connections**. (Figure 2-1)
- Tap **Bluetooth** → **Device** → **Add new device** to search PC Bluetooth host devices. (Figure 4-1)
- Tap **COM Ports** → **New Outgoing Port** and tap target device like “tft-fbggsz39grh”, tap “**Next**” and choice virtual com port. Here it assumed is “COM7” for we need. (Figure 4-2)
- Tap **Start** → **Programs** → **ActiveSync** and choice “**Connect via Bluetooth**” option. (Figure 4-3)
- Execute Microsoft ActiveSync from your PC and make sure select “COM7” option to make a Bluetooth ActiveSync connection. (Figure 4-4)



4-1.1

4-2



4-2

4-4

5. A2DP Profile:

A2DP Profile supports sending high quality audio data to peer Bluetooth devices.

Turn on Bluetooth via Wireless Manager.

- Prepare a Bluetooth headset that support A2DP profile, and set the device into pairing mode.
- Tap **Start** → **Settings** → **Connections**. (Figure 2-1)
- Tap **Bluetooth** → **Device** → **Add new device** to pairing a Bluetooth A2DP device. (Figure 5-1)
- To input the pairing password (for example “0000”) and task bar will appear headset icon if pairing successfully.
- Now you could play music or video file and heard sound from the headset device.



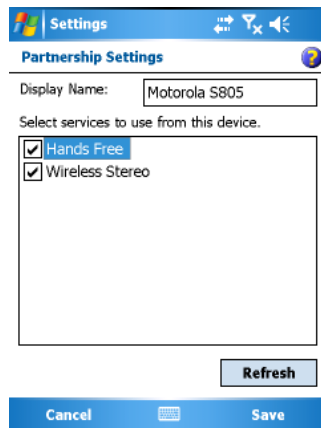
5-1

6. Hands-Free/Handset Profile:

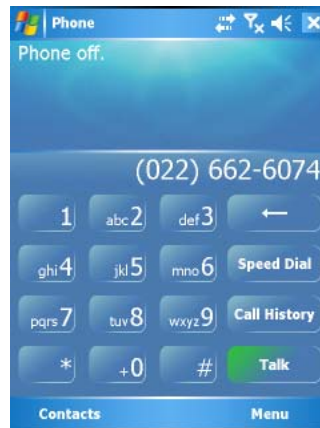
Handset profile supports interoperability between a headset and a mobile device, such as a cellular phone.

Hands-Free Profile supports conjunction with a hands-free device over Bluetooth. Turn on Bluetooth via Wireless Manager.

- Prepare a Bluetooth headset that supports Hand-Free profile, and set the headset into pairing mode
- Tap **Start** → **Settings** → **Connections**. (Figure 2-1)
- Tap **Bluetooth** → **Device** → **Add new device** to search Hand-Free device. (Figure 5-1)
- To input the pairing password is “0000” and task bar will appear headset icon if pairing successfully.
- Now you could press Hand-Free button from remote device and see phone’s dial-up dialog appear for your operate. (Figure 6-1 & 6-2)



6-1

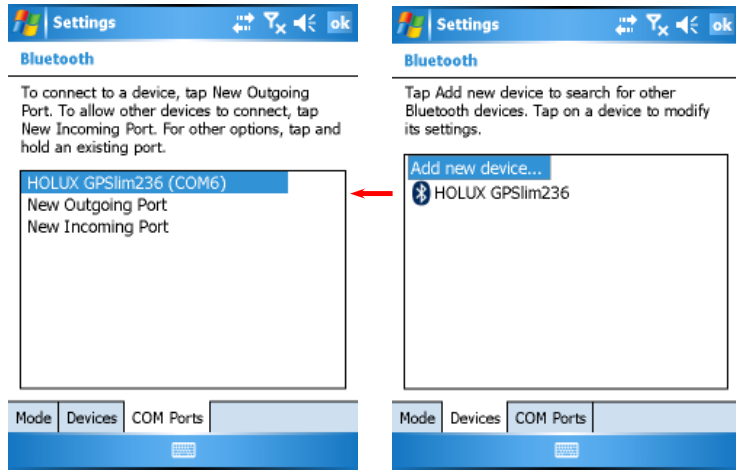


6-2

7. SPP Profile:

Turn on Bluetooth via Wireless Manager.

- Prepare a Bluetooth device that support SPP profile (Like Bluetooth GPS), and set the device into pairing mode.
- Tap **Start** → **Settings** → **Connections**. (Figure 2-1)
- Tap **Bluetooth** → **Device** → **Add new device** to search SPP device. (Figure 7-1)
- The available Bluetooth SPP device will show in the list and assigned a virtual COM port, Tap the device to pairing (Figure 7-1)
- To input the pairing password is “0000”
- Now you could receive GPS data from Bluetooth GPS device (Figure 7-2)



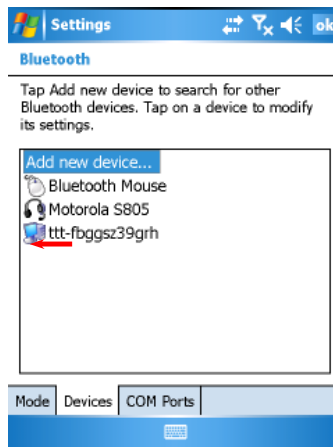
7-1

7-2

8. **HID Profile:**

Turn on Bluetooth via Wireless Manager.

- Prepare a Bluetooth device that support HID profile (Like Bluetooth mouse or keyboard), and set the device into pairing mode.
- Tap **Start** → **Settings** → **Connections** (Figure 2-1)
- Tap **Bluetooth** → **Device**, and tap “**Add new device**” to search Bluetooth HID Mouse device. (Figure 8-1)
- To input the pairing password is “0000”.
- Now you could use Bluetooth HID Mouse to move mouse position and click.
- Bluetooth HID Keyboard is same as Bluetooth HID Mouse settings and will be used for keyboard input.



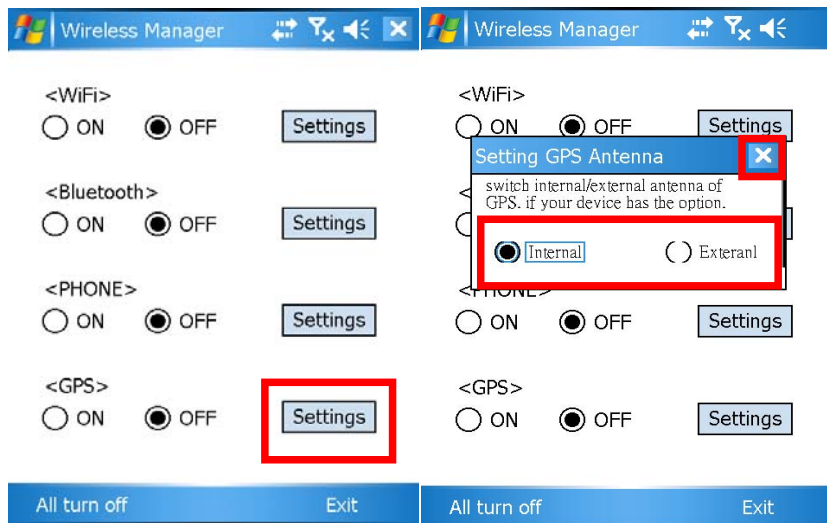
8-1

GPS (Option)/GPS external Antenna (Option)

Press Button 1 to launch Wireless Manager. Click Settings on the right side of the GPS On/Off switch, the Setting GPS Antenna dialog will pop up; select the antenna type for your current setup:

- **Internal:** Use Internal GPS antenna, default setting.
- **External:** Use external GPS antenna (optional)
- Click "X" to close the dialog and save your setting.

**Warning: The external antenna must be installed if you set the antenna type to "External", otherwise GPS module will not function.
Normal GPS option includes internal antenna only.**



SPECIFICATIONS

CPU

Marvell PXA270

CPU speed 624MHz

Memory

RAM 128MB

ROM 128MB/256MB

Display

Type: 4" Active TFT Transflective Colour LCD

Resolution: 480 x 640 pixels

Colour: 64K

Backlight: LED

Touch Screen

Type: Resistive

Interface: Serial

I/O ports

USB 2.0 port

USB client port

Serial port

Audio ports (Microphone/Earphone)

PCMCIA slot type II x 1 (I-version not available)

SD slot

System Unit Dimensions and Weight

Width: 90mm (W 3.5")

Depth: 150mm (H 5.9")

Height: 33mm (D 1.3")

Weight: 450g (15 oz.)

AC Adapter

Voltage: AC 100~240 V

Frequency: 50/60 Hz

Output Voltage: DC 12V 3A

Maximum Power: 36 Watts

Dimension: 108mm (4.2" W) x 56mm (2.2" D) x 34mm (1.3" H)

Weight: 270 g (9.5 oz.)

Battery

Type: Lithium Ion

Capacity: 3.7V 3900mAH

Dimension: 71mm (W 2.8") x 64mm (D 2.5") x 12.3mm (H 0.5")

Weight: 108 g (3.8 oz.)

Materials and Recycling

Materials of the computer are as follows:

Cabinet:	Aluminium alloy ADC-12 or A380 Magnesium alloy AZ91D UL grade PC+ABS GE C6200 or TN-3813BW
Bracket:	Aluminium 5052, steel with Nickel plating, or stainless Steel S304
Cushion pad:	Nature rubber
PCB:	FR-4, UL 94V0
Battery:	Rechargeable Lithium Ion & Lithium polymer
Packing:	Carton: Recycled/Recyclable unbleached paper User's Guide: Recycled/Recyclable paper

Please recycle the parts according to local regulations.

MAINTENANCE / SERVICE

Cleaning

ALWAYS turn OFF the power, unplug the power cord and remove the battery before cleaning.

The exterior of the system and display may be wiped with a clean, soft, and lint-free cloth. If there is difficulty removing dirt, apply non-ammonia, non-alcohol based glass cleaner to the cloth and wipe.

An air gun is recommended for cleaning water and dust. For salty water please clean with fresh water then blow-dry with an air gun. Be sure close all caps tightly before water cleaning.

Troubleshooting

Should the computer fail to function properly, the troubleshooting steps below may be followed. (Please backup your data before troubleshooting)

- Check AC adapter, battery, and the power source.
- Press reset to re-boot the computer.
- Remove the software suspected.
- Press hard reset to re-boot the computer.

RMA Service

If troubleshooting steps are unsuccessful, consult your dealer for an Return Material Authorisation (RMA). Goods will not be accepted by the manufacturer without an RMA and will be returned at the sender's expense.

Shipping instructions:

1. Remove any personal add-on devices or other media.
2. Use the original shipping container and packing materials, if possible.
3. If the original packing materials are not available, wrap the equipment with soft material (e.g. PU/PE form) then put the wrapped equipment into a hard cardboard shipping box.
4. Include a sheet with the following information: (Note: Please keep a copy of this sheet for your records.)
 - a. Name
 - b. Address
 - c. Unit serial number
 - d. Place and date of purchase or the original invoice number
 - e. Date of failure
 - f. A DETAILED description of the problems you have encountered including: The operating system, the add-on device installed (if any), the application software, the failure phenomenon, etc.
 - g. A list of the hardware/software configuration, if applicable.
5. Clearly mark the outside of the shipping box with the RMA #. If an RMA # is not present on the shipping box, receiving will be unable to identify it and it might be returned.
6. Unless prior arrangements have been made, the customer is responsible for all shipping costs. Unauthorized use of the company's shipping accounts is not permitted.



Opentec Solutions Pty Ltd

(a division of Inventis Technology)

Unit 9, 1-3 Endeavour Rd
Caringbah NSW 2229 Australia
Phone +61 2 9575 0925
Fax +61 2 9575 0999