

Dt100rc User Guide

Prepared By: Peter Milne

Date: date

| <i>Rev</i> | <i>Date</i> | <i>Description</i> |
|------------|---------------|---|
| 1 | yymmdd | First issue |
| 2 | yymmdd | Update memory requirement, understand that each track runs concurrently. Implication is that each track is the same length, and hence memory requirement is large. |

1 Introduction

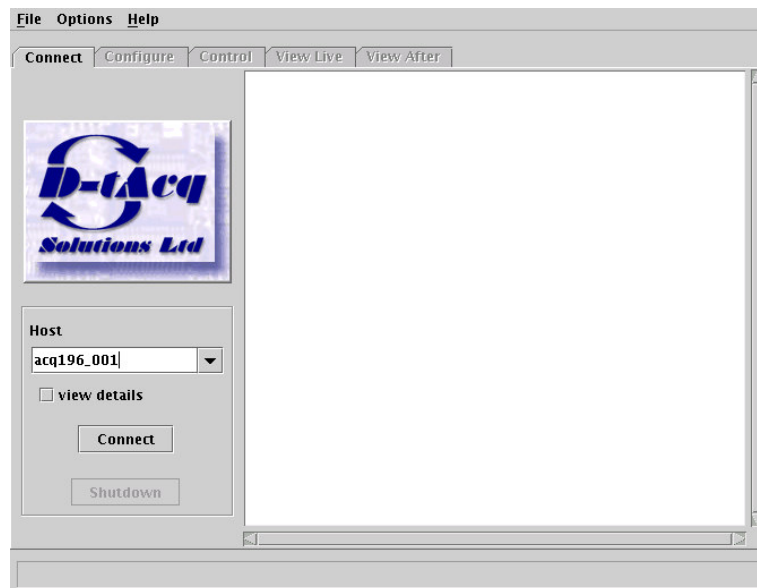
Dt100rc is the D-TACQ remote control GUI app.

2 View data in four easy steps

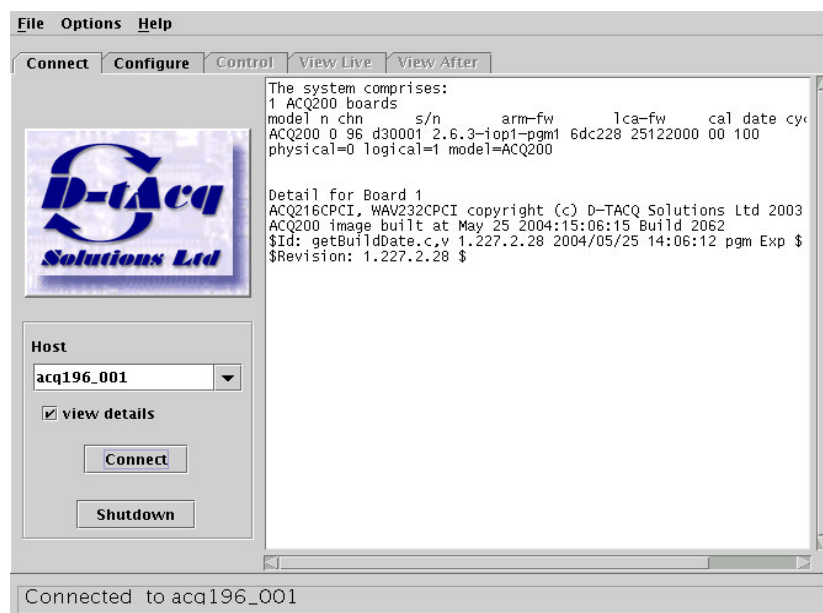
2.1 Connect

Enter the target IP host name / IP address in the box, press return, press connect.

Check View Details for details:

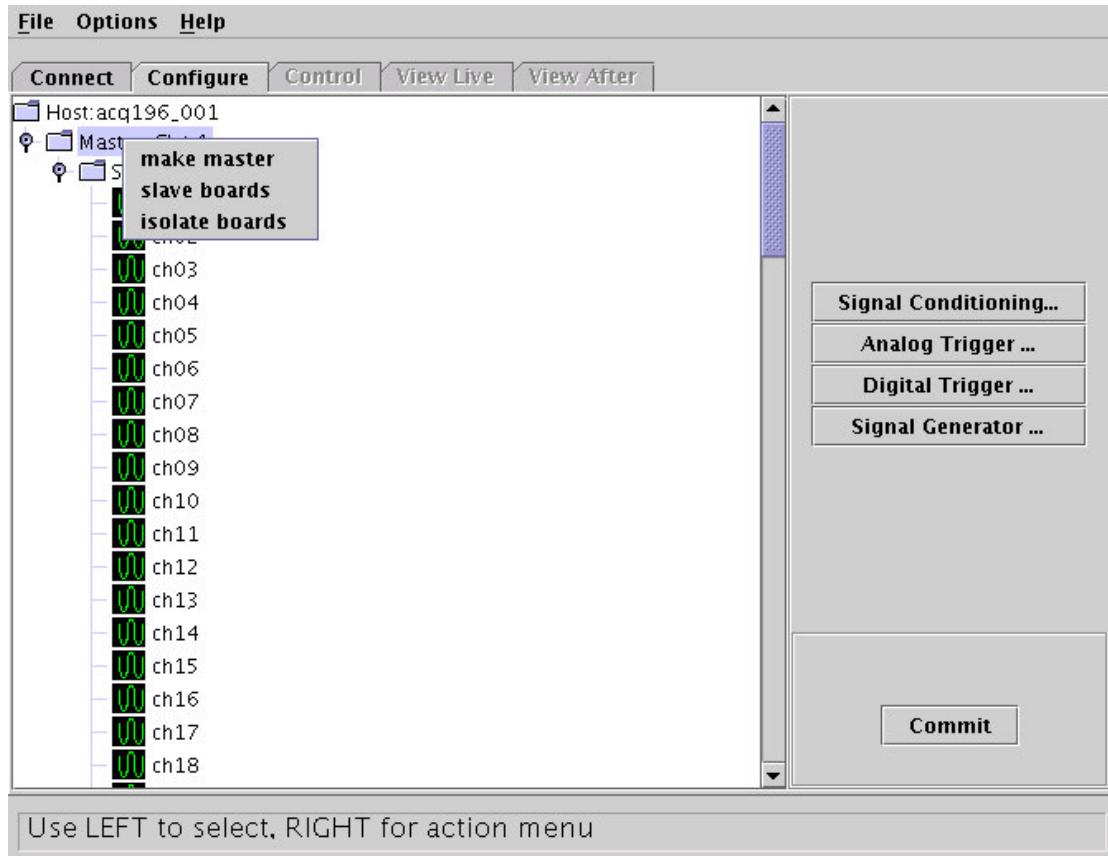


Connected:



2.2 Configure:

Define the master board, optionally, masking channels
(open the tree, right click for menu)



Press commit to gain access to the next tab:

2.3 Control.

Here you can control and view the state of captures.

First time: Try

Soft Transient, Post 10k, Pre 0, Internal Clock 250kHz

File Options Help

Connect Configure **Control** View Live View After

Synchronisation

☒ Soft
☐ Gate
☐ Trigger

Post Samples 10k ☐ Enable Streaming

Pre Samples 0

☒ Internal Clock 250kHz

ST_STOP

Pre: 0 Total: 10240 Post: 10240

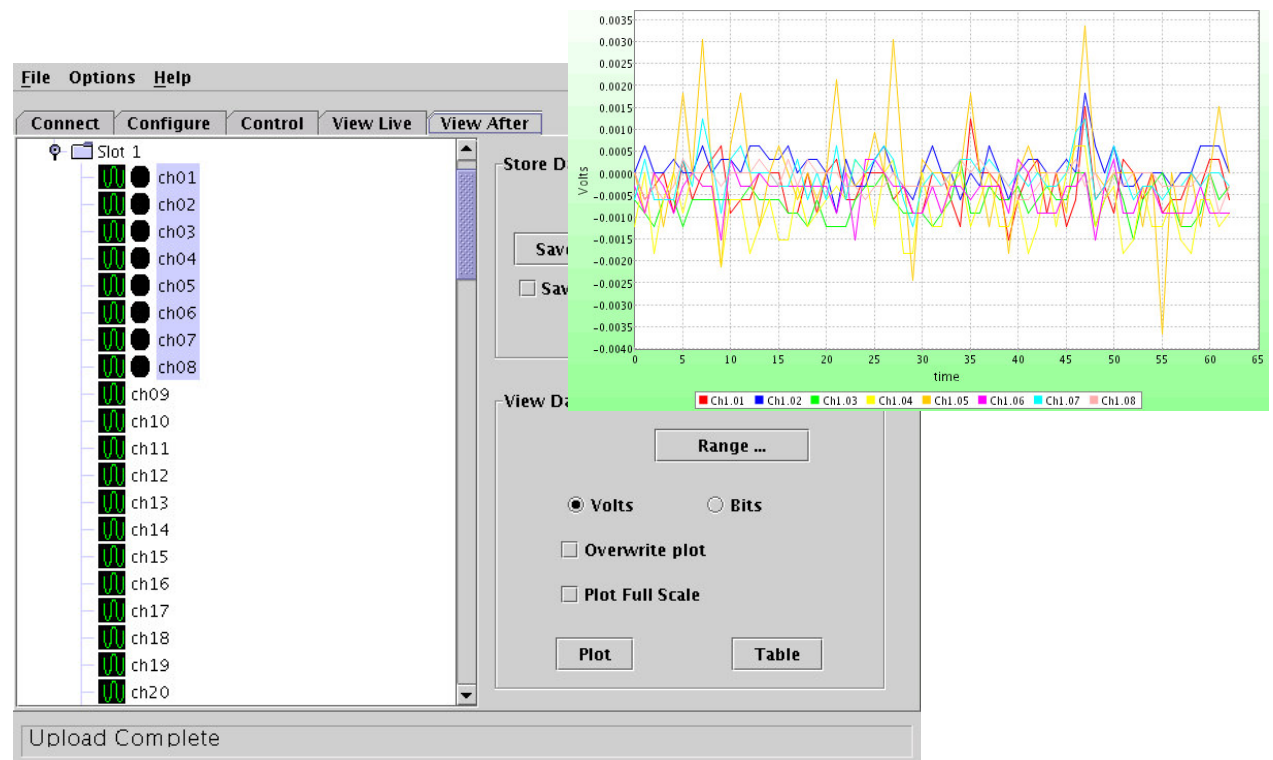
Arm

Capture Complete

2.4 View After

From here you can upload and view data.

Remember to select some (or all channels first).



There are lots more things to use in RC. Enjoy!.

Ps: Save status on Exit, and there won't be so much setup next time.

Unfortunately I haven't figured out how to save all the fields yet, and save state currently fails in JDK1.5 – never mind, it does look good in the latest Metal styling :-).