

HBC-4301A
Hot Bonding Controller

Operators Manual



Supplied by:



March, 2008

TABLE OF CONTENTS

TABLE OF CONTENTS	1
1. GETTING GOING FAST	7
2. INTRODUCTION	9
3. SPECIFICATIONS	11
3.1 HARDWARE SPECIFICATIONS	11
3.2 OPERATIONAL SPECIFICATIONS	12
4. STARTING... ..	15
4.1 INSTALLING THE SOFTWARE	15
4.2 TURN THE COMPUTER ON	16
4.3 USING THE MENUS ON THE COMPUTER	17
4.4 MAIN MENU.....	18
5. CONFIGURING THE THERMOCOUPLES AND ZONES	21
5.1 THERMOCOUPLES AND ZONES	21
5.1.1 <i>Repair Map</i>	22
5.1.2 <i>Thermocouple Table</i>	23
5.1.3 <i>Zone Configuration</i>	23
5.1.4 <i>Task Progression Control</i>	24
5.1.5 <i>Temperature Alarm Threshold</i>	24
5.2 VACUUM / PRESSURE SETUP	25
5.2.1 <i>Vacuum Pump #1</i>	25
5.2.2 <i>Vacuum Pump #2 Control</i>	25
6. CREATING A TEMPERATURE CYCLE.....	27
7. VACUUM PUMPS	29
7.1 INTRODUCTION	29
7.2 VACUUM PUMP #1	29
7.3 VACUUM PUMPS	29
7.4 CONTROLLING THE VACUUM PUMPS FROM THE PC	29
7.5 CONTROLLING THE VACUUM PUMPS FROM THE CONTROL CASE.....	30
7.5.1 <i>Manual Control Mode</i>	30
7.5.2 <i>Automatic Mode, Fixed Vacuum Level</i>	31
7.5.3 <i>Automatic Mode, Programmed Vacuum Levels</i>	31
7.5.4 <i>Vacuum Alarms, Local mode</i>	31
8. STARTING AND STOPPING A HEAT CYCLE.....	33
8.1 THE EASIEST WAY TO GET A SELECTED CYCLE RUNNING.....	33
8.2 THE START CYCLE SCREEN DETAILS	34
8.3 HALT HEAT CYCLE	37
8.4 OPERATING WITH TWO CONTROL CASES.....	39
8.4.1 <i>Connecting the cases</i>	39
8.4.2 <i>Configuring the cases</i>	39
8.4.3 <i>Configuring the software</i>	39

9. MONITORING THE OPERATION	41
9.1 STATUS ALL THERMOCOUPLES	41
9.2 TEMPERATURE GRAPH	42
9.2.1 <i>Navigating Around the Temperature Graph</i>	42
9.2.2 <i>Temperature Graph Details</i>	43
9.3 REPAIR MAP.....	45
9.4 MONITORING THE VACUUM / PRESSURE.....	46
9.4.1 <i>On the control case</i>	46
9.4.2 <i>On the notebook PC</i>	46
10. CHANGING A RUNNING TEMPERATURE PROFILE	47
11. PROCESS LOG, ALARMS	49
11.1 PROCESS LOG.....	50
11.2 ALARM LIST.....	50
11.2.1 <i>Thermocouple Temperature High / Low</i>	50
11.2.2 <i>Thermocouple Open Circuit / Reversed</i>	50
11.2.3 <i>Acceptance Temperature Low (only used when an adhesive has been selected)</i> .	50
11.2.4 <i>No Acceptance Thermocouple (only used when an adhesive has been selected)</i> .	51
11.2.5 <i>Critical Temperature Error</i>	51
11.2.6 <i>Heater Fail Alarm</i>	51
11.2.7 <i>Heatsink Temperature Error</i>	51
11.2.8 <i>Cold Junction Temperature</i>	51
11.2.9 <i>Case Temperature Alarm</i>	51
11.2.10 <i>High/Low Vacuum Alarms</i>	51
11.3 PERIODIC DATA LOGGING.....	52
12. HOW TO CLOSE THE PROGRAM.....	53
13. ADHESIVE CONTROL.....	55
13.1 INTRODUCTION.....	55
13.2 CONTROLLING A REPAIR TO MATCH THE ADHESIVE CHARACTERISTICS	55
13.3 ENTERING A NEW ADHESIVE.....	55
14. BACKUP OPERATION FROM THE CONTROL CASE.....	57
14.1. RUN MODE.....	59
14.1.1 <i>Key Functions in Run Mode</i>	59
14.1.2 <i>Alarms</i>	60
14.2 SETUP MODE SUMMARY	63
14.3 KEYPAD OPERATION IN THE SETUP MODE.....	64
14.4 SETUP MODE DETAILS	64
1. <i>Control mode</i>	64
2. <i>Zone 1 Thermocouple Enable</i>	64
3. <i>Zone 2 thermocouple Enable</i>	65
4. <i>Zone 3 thermocouple Enable</i>	65
5. <i>Acceptance thermocouples</i>	65
6. <i>Editing a heater cycle</i>	65
7. <i>Configure the temperature profile, stage 1</i>	65
8. <i>Configure the temperature profile, stage 2</i>	66
9. <i>Configure the temperature profile, stage 3</i>	66
10. <i>Configure the temperature profile, stage 4</i>	66
11. <i>Configure the temperature profile, stage 5</i>	66
12. <i>Configure the temperature profile, stage 6</i>	66

13. & 14. Vacuum pump 1 control (and #2 control)	66
15. Vacuum alarms	66
16. Zone output power control	66
17. Manually set zone power / temperature	67
18. Start and stop function.....	67
19. Set the PID values	67
20. Units selection	68
21. External inputs.....	68
14.5 RUNNING A JOB FROM THE CONTROL CASE	69
14.5.1 Introduction	69
14.5.2 Configuring the temperature profile.....	70
14.5.3 Starting and stopping the temperature profile	70
14.5.4 Data logging in the control case	71
15. REVIEWING A PREVIOUS REPAIR.....	73
15.1 THE CONCEPT OF A BACKUP SYSTEM.....	73
15.2 SAVING THE CURRENT JOB WHEN FINISHED	74
15.3 RETRIEVING A PREVIOUS JOB	74
15.4 ADDING A LINKED FILE TO A PREVIOUS JOB	75
15.5 TRANSFERRING A JOB FILE TO ANOTHER HBC-4301 COMPUTER.....	76
16. TUNING THE CONTROLLER USING THE PID VALUES	77
16.1 BACKGROUND	77
16.2 CHANGING THE PID VALUES	77
16.3 PROPORTIONAL VALUE.....	78
16.4 INTEGRAL VALUE	78
16.5 DERIVATIVE VALUE	79
16.6 TUNING THE PID VALUES	79
17. TROUBLESHOOTING GUIDE.....	81
17.1 A ZONE DOES NOT HEAT UP.....	81
17.2 A ZONE HEATS ABOVE THE SET POINT TEMPERATURE	81
17.3 THE COMPUTER KEEPS 'BEEPING'	81
17.4 THERE ARE TOO MANY 'TEMPERATURE TOO HIGH / LOW ALARMS'.....	81
17.5 THE SCREEN OF THE PC GOES BLANK.....	81
17.6 THE TEMPERATURE DOES NOT CONTROL TO THE SET POINT	81
17.7 A TEMPERATURE IS READING "O/C"	82
17.8 THE TEMPERATURE IN ONE ZONE GOES HIGH WHILE THE OTHER ZONE GOES LOW.....	82
17.9 THERE IS A "HEATER FAIL" ALARM	82
17.10 THE VACUUM FLUCTUATES TOO MUCH IN AUTOMATIC CONTROL MODE	82
17.11 THERE IS A "THERMOCOUPLE X CRITICALLY HIGH" ALARM.....	82
17.12 THE PC WILL NOT CONNECT TO THE HBC-4301 WHEN USING A USB ADAPTER	82
18. MAINTENANCE	83
18.1 EXTERNAL WIRING.....	83
Heater outputs	83
Serial communications	84
Vacuum transducers	84
Mains power	85
18.2 CHANGING FROM RS232 (SERIAL PORT) TO RS485 (USB PORT)	86
Introduction	86
Changing the HBC-4301 RS232/RS485 mode.....	86
Networking 2 HBC-4301 hot bonders	86

18.3 INSTALLATION & SETUP OF THE USB SOFTWARE	87
19. ASSEMBLY AND BAGGING.....	89
19.1 THERMOCOUPLES	89
19.2 RELEASE FILM.....	89
19.3 HEATER BLANKETS	90
19.4 BREATHER CLOTH.....	90
19.5 VACUUM PORTS	90
19.6 BLEEDER CLOTH	90
19.7 VACUUM BAG SEALANT	90
19.8 VACUUM BAG FILM	91
20. MANUFACTURE OF THE THERMOCOUPLE.....	93
21. ACCESSORIES	95
21.1 HARDWARE EXPANSION	95
21.2 BONDING ACCESSORIES.....	95
<i>Accessories case.....</i>	<i>95</i>
22. OPERATORS AND PASSWORDS	97
<i>Introduction.....</i>	<i>97</i>
<i>Creating a new User</i>	<i>98</i>
23. GLOSSARY OF TERMS.....	99
<i>Cycle.....</i>	<i>99</i>
<i>Guaranteed Soak.....</i>	<i>99</i>
<i>Map (Repair Map)</i>	<i>99</i>
<i>Passwords</i>	<i>99</i>
<i>PID.....</i>	<i>99</i>
<i>Ramp Rate.....</i>	<i>99</i>
<i>Soak Time.....</i>	<i>99</i>
<i>Stage.....</i>	<i>99</i>
<i>Zone.....</i>	<i>99</i>
24. INDEX.....	101

Note:

Throughout this manual, several important keys have been referred to by an abbreviation.

i.e.	↵	Refers to the Enter key
	[ESC]	Refers to the Escape key
	↓, ↑, ← & →	Refers to the Cursor keys

© Copyright NOVATECH CONTROLS PTY LTD —2008

Edition - March, 2008

This manual describes the notebook PC software version 1.6.2
and the control case software version 2.01, 16th July 2008

Neither the whole nor any part of the information contained in, or the product described in, this manual may be adapted or reproduced in any material form except with the prior written approval of Novatech Controls Pty Ltd (Novatech Controls).

The product described in this manual and products for use with it are subject to continuous developments and improvement. All information of a technical nature and particulars of the product and its use (including the information in this manual) are given by Novatech Controls in good faith. However, it is acknowledged that there may be errors or omissions in this manual. A list of details of any amendments or revisions to this manual can be obtained upon request from Novatech Controls Technical Enquiries. Novatech Controls welcome comments and suggestions relating to the product and this manual.

All correspondence should be addressed to:-

Technical Enquiries
Novatech Controls Pty Ltd
309 Reserve Road,
Cheltenham
Victoria 3192
Australia.

Tel: +61 3 9585 2833
Fax: +61 3 9585 2844
Web site: www.novatech.com.au

Novatech Controls' authorised dealers should carry out all maintenance and service on the product. Novatech Controls can accept no liability whatsoever for any loss or damage caused by service or maintenance by unauthorised personnel. This manual is intended only to assist the reader in the use of the product, and therefore Novatech Controls shall not be liable for any loss or damage whatsoever arising from the use of any information or particulars in, or any error or omission in, this manual, or any incorrect use of the product.

This page has been left blank intentionally.

1. GETTING GOING FAST

Once you are familiar with the HBC-4301, it will only be necessary to be prompted with a brief description of each of the operations to get the heat cycle going. For further details on each topic, follow the chapter headings or references.

1. Heaters and thermocouples (Chapter 5)

- 1.1 *Place as many thermocouples and heaters on the patch area as required. Note which heaters and thermocouples are associated.*
- 1.2 *Connect all thermocouples to the input connectors.*
- 1.3 *Connect the heater power leads to the power outlet sockets.*

2. Cable connections (Chapter 4)

- 2.1 *Connect the 3-phase or single phase power lead to the power input socket.*
- 2.2 *Turn on the circuit breakers for all the heater zones that are connected (Always include #1, Master)*
- 2.3 *Connect the power leads to the computer power pack.*
- 2.4 *Plug the power pack into the computer.*
- 2.5 *Connect the "Computer" lead from the control case to the computer serial port or USB port (It is very important to always connect the USB adapter before starting the HBC-4301 program).*
- 2.6 *Connect the printer lead from the computer to the printer (optional).*

3. Turn on the main supply power switch on the wall.

4. Make sure that the control case is configured for "Primary" or "Secondary" control mode (Setup function #1, Chapter 14.4, Control Mode).

5. Turn on the computer and start the HBC-4301 program.

Enter your **operator name** and **password**. If starting the program for the first time the Operator name will be "Default" and the password will be "password".

6. Select a heat cycle. (Chapter 6)

*Edit a pre-designed cycle if necessary from the **Zone Temperature Profiles** screen (**Control Functions Menu, F3**), or go straight to the next step by configuring the system using an existing saved cycle.*

7. Configure the thermocouple / zone layout by drawing the Repair Map (Main Menu, F3).

Current Thermocouple Configuration (Chapter 5)

- 7.1 Click the **Add Heater** button.
- 7.2 Draw the zone heater shape(s). Select the desired zone number or press **OK** to select the next available zone.
- 7.3 Click on the **Add Thermocouple** button and click where the thermocouple is to be placed for the zone. Select the desired thermocouple number or press **enter** to select the next available thermocouple.
- 7.4 The **Update Configuration** button will automatically transfer the configuration to the **Thermocouple and Zone Parameters** screen. Use this screen to fine-tune the configuration. (Tie Stages, PID numbers, Chapter 16)

Vacuum

- 7.5 Use the **Control Functions Menu, Vacuum / Pressure Setup (F8/F2)** screen to configure the vacuum pump and alarms.

8. Select Start Heat Cycle (F5) from the main menu.

- 8.1 Check that all required heater zones are **Enabled**. (If not, [ESC]. back to the **Repair Map** window).
- 8.2 Select the cycle by clicking **Select Profiles** or pressing **Select Profile (L)**. The temperature profiles were setup earlier in the #6 (F8/F3).
- 8.3 Select required zones by using the cursor keys. (Normally use **Enabled Zones**) and then "S" or ↵.
- 8.4 Change the cycle description if necessary, and press ↵ to continue.
- 8.5 [ESC] out of the **Cycle Setup** screen, back to the **Start Cycle** window.
- 8.6 Press "S" to continue the starting procedure.
- 8.7 Enter **Item** being repaired, and **Part No**.
- 8.8 Select the adhesive type to use the automatic cure cycle.
- 8.9 Press "S" to go to the **Immediate / Auto** window. ↵ (Immediate mode) will start the cycle.
- 8.10 Press any key to confirm each automatic temperature / time if required.

9. Monitor the Repair Progress (Chapter 9)

- 9.1 Select **Repair Map (F3)** from the main menu.
- 9.2 Select **Temperature Graph (F2)** from the main menu.
- 9.3 All enabled zones can be selected from the **Temperature Graph** screen by pressing the desired zone number, 1 to 3.
- 9.4 Select **Status All Thermocouples (F1)** for a table of temperatures.

10. Alarms

If alarms occur because of temperature deviations on warm up, check the **Process Log (F7)** screen. Entering the screen will accept the alarm and silence the horn.

2. INTRODUCTION

The HBC-4300 series is a feature-packed hot bonding controller system built to suit the requirements of today's aviation and bonding industries.

It is based on a versatile electronic / vacuum control case and a notebook computer as the operator interface. The computer is stored in the lid of the HBC-4301 control case. To operate the hot bonding controller, the computer can be placed on a bench or desk up to 100m away from the control case.

A network cable is used to communicate between the computer and the control case.

The number of inputs and zones can be increased:

from- 3 zones to 6 zones

from- 16 thermocouples to 32 thermocouples

with the use of another control case (HBC-4301).

The system is capable of running two independent tasks at the same time. The same keys are used to access the configuration of both tasks. The tasks are enabled from the Main menu by pressing either the 1 or the 2 keys.

A display and keypad is provided as part of the HBC-4301 control case for backup operation and for running a repair with reduced functionality.

The HBC-4301 takes full advantage of the technology of the current notebook PC's. It uses the **high-resolution colour screen** to clearly identify the set point temperature, hottest temperatures, coldest temperature, vacuum set point and vacuum levels.

The repair temperature graph cycles can be saved and **printed later**. The alarm messages and data logs are also saved for later reference.

In addition, a thermocouple / zone **map of the repair** can be created and a **digital photograph** can be linked to the internal database. Both of these can be saved along with the temperature profile of a repair and can be retrieved for later examination for quality control records.

The thermocouples are grouped into the zones using the Thermocouple and Zone Configuration screen. All the enabled zones are scanned for the hottest thermocouple (or the average temperature, if available from the Thermocouple and Zone Parameter screen) to determine the temperature to be used for control of the zone. The hottest thermocouple / average temperature in each zone and the coldest thermocouple in the task are plotted on a graph. An open circuit thermocouple will automatically be removed from control.

The vacuum can be controlled automatically. The **vacuum level can be programmed** as easily as the temperature and will then automatically change as the repair goes through the temperature cycle. The control system allows the pump to adjust to any changes in the leak rate of the repair and still maintain the same vacuum level. It may even stop the air supply to the pump if the vacuum is close to the set point. A second vacuum pump is included for two simultaneous repairs with manual electronic on/off control.

The **adhesive curing characteristics can be programmed** into the computer so that the guess work is taken out of curing time. The curing stage time is adjusted automatically if an adhesive is nominated as the temperature cycle is started.

If a zone is needed to provide some background heat into a repair, any of the zones can be controlled in the manual mode using the local keypad / display on the control case. The same controls can be used to control a repair process with some reduced functionality. The graph of the repair is saved in the control case and can be downloaded to a computer later.

3.1 Hardware Specifications

NATO Stock Number is 6685-66-145-0064

The central or main component of the HBC-4300 series is the HBC-4301 control case. The case contains the notebook computer for transportation, and also: –

- The main microcomputer
- Thermocouple reading circuitry
- Heater control
- Backup keypad / display
- Automatic vacuum control pumps and circuitry

Number of T/C inputs:	16 (expandable to 32)
Thermocouple type:	Type K or J
Temperature range:	Up to 300°C (600°F)
Accuracy:	+/- 1°C
Number of heater zones inputs:	3 (expandable to 6 zones)
Type of controlled output:	Phase angle and burst fired SCRs to operate infra-red heater lamps or mats
Heater current (max.):	10 Amps
Heater power:	7.2kW total at 240vac supply (2.4kW per zone) 3.3kW total at 110vac supply (1.1kW per zone)
Power supply safety protection:	Earth leakage circuit protection on each heater
Vacuum sources:	2 Air operated ejectors, down to -85 kPa
Vacuum control (Pump #1):	Manual on / off
Vacuum control (Pump #2):	Automatic, programmable or manual setting
Air supply:	150 to 800 kPa (Normal operation 500kPa) 200 l/m (both pumps running at 100%)
Mains voltage supply:	Single phase or 3 phase 100 to 240VAC 50/60 Hz (phase to neutral)
Power:	10Watts for controller plus heater power
Safety switch:	Earth leakage detector on each zone (30mA)
Environmental Rating:	Operating Temperature -25°C to 55°C Relative Humidity 5% to 95% (non-condensing)

Degree of Protection:	IP65 with the case closed IP30 with the case open
Case Size, HBC-4301A:	520 mm wide by 425 mm deep by 220 mm high
Case Weight, HBC-4301A:	14 kg plus notebook computer (approx 2.8kg)

3.2 Operational Specifications

Number of simultaneous tasks:	2 (Repairs independently started and monitored)
Temperature control:	0 to 300 °C, PID
Display of temperatures:	
Mapping:	Custom drawn map of the repair showing the Zone / Thermocouple positions & temperatures. Colour coded tags show the hottest / coldest temperatures
Graph:	A graph shows the control temperature for each zone. The operator can select on one graph: Control temperature for each zone, coldest thermocouple for the repair, set point temperatures and the vacuum. Data is included for stage / elapsed time and estimated finish time and zone power level. Graph includes a zoom and pan feature.
Table:	A colour-coded table shows the temperature of all thermocouples with colour coding of the hottest, coldest, control, low and high thermocouples.
Selection of control T/C:	Control will be from the highest or average temperature of the thermocouples in each zone.
Selection of acceptance T/C:	Any thermocouples can be nominated as acceptance thermocouples. The acceptance thermocouple will be plotted on the graph. The soak time can be automatically adjusted based on the temperature of the acceptance thermocouple.
Zone control:	Multiple zones within a job can be tied at the beginning of each stage or one zone can be nominated as the master with the other zones set to follow the master.
Display modes:	Imperial or metric
No. of ramp / soak control stages:	Six
Temperature ramp rates:	0.5 to 10.00 °C per minute in 0.1 degree increments
Cycle profile:	Up to six ramp / soak stages each cycle
Cycle duration:	6 x 2000 minutes per stage in one minute increments

Cycle memory:	Up to 100 pre-programmed cycles
Heater / T/C configuration:	Selectable on the keyboard or automatically selected from the repair map.
Operator controls:	Remote from control case using notebook PC Local keypad / display for backup operation
Hard copy of data:	Available any time during or after the end of the cycle in colour or b&w including:
Map	Zone / thermocouple positions & temperatures and the hottest / coldest temperatures, process log.
Graph	Operator selected temperature / vacuum graph including zoom views, plus: Time of day, zone number, zone status, control T/C number, acceptance T/C number, stage number, set point, run time, vacuum level and job data
Other screens:	Other items can be printed during or after a run including: Adhesive profiles, Alarm report, Process log and Temperature profile.
Storage of finished cycle:	Completed run is saved on the hard disk or direct to a network drive / floppy disk if available. Other related files can be linked to the saved job such as- Pictures Text documents
Import and Export	Files can be imported or exported in text format that could be read by MS Word™ or MS Excel™ format including: Temperature profiles and previous temperature graphs.
Retrieval of previous runs:	Selected by part number, operator, adhesive, job description or date / time. Data retrieved includes: Zone temperature / vacuum graphs, repair map, alarms and warning messages, pictures and documents. Graphs can be exported to Excel™
Manual power output over-ride:	Auto-manual over-ride on each heater output
Alarm identification:	On screen display and hard copy print
Alarm status:	Temperature deviation Thermocouple burnout Thermocouple reversed Vacuum over / under condition Heater mat failure Hardware failure Communication failure

Alarm indication: Audible – Tone generator and PC speaker
Visual – Flashing red light on control case

Power fail re-start: Re-start at last point.
(Cycle data is stored on disk every 15 seconds)

4.1 Installing the Software

Insert the Novatech Controls HBC-4301 installation CD in the CD drive in the PC.
The Setup Wizard will start running.

Select Components

The drop down box gives the operator three options:

1. Full Installation

Installs the HBC-4301 control program and overwrites the saved temperature profiles, default program settings and the adhesive profiles.

2. Upgrade Current Installation

Overwrites the current version of the program but leaves the saved temperature profiles, default program settings and the adhesive profiles unaltered.

3. Custom Installation

This allows the operator to select the components that will be installed.

The past jobs data base is never destroyed.

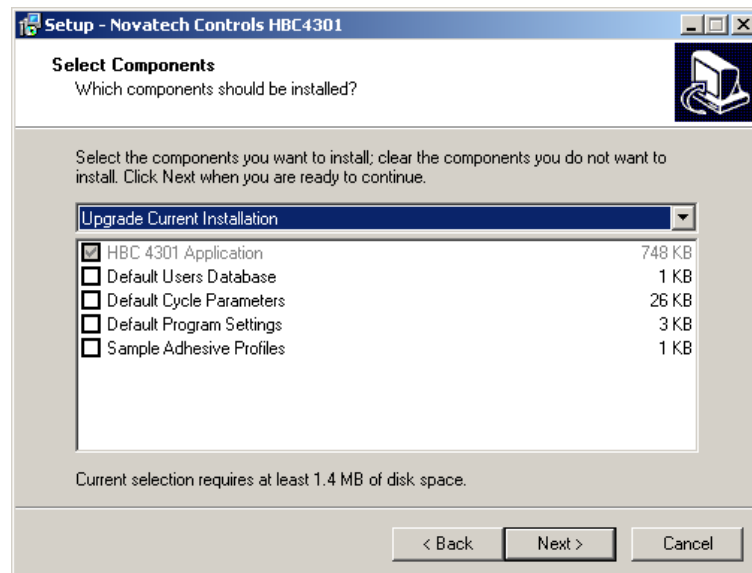


Fig. 1 Start of the Installation Screens

Select Start Menu Folder

Use **Novatech Controls** folder by clicking **Next**.

Select Additional Tasks

The two options allow the operator to start the program from an icon on the desktop and / or from an icon in the Quick Launch area of the Windows™ start bar.

Ready to Install

Confirms the installation details. Click **Install** to complete the installation.

A tick in the **Launch Novatech Controls HBC4301** tick-box will launch the HBC-4301 program on completion of the installation.

USB Adapter

If a USB port is being used, follow the instructions in chapter 18.3, Installation and Setup of the USB Software, to install the driver for the USB adapter.

NOTE: Make sure that the USB adapter is **NEVER** unplugged from the PC while the HBC-4301 program is running. If this happens, the PC will close the USB port and it will not be available until the HBC-4301 program is closed and restarted.

Remove the HBC-4301 CD from the computer and store it in a safe place.

4.2 Turn the Computer On

Allow the computer to start running Windows™.

The batteries will always start the computer if they are charged, however to use the computer for any extended period (> 30 minutes), always use the power adaptor.

Use the IEC lead supplied to connect the mains outlet on the HBC-4301 control box (Computer Power) to the computer power adaptor. Plug the power adaptor into the computer. If only one control case is being used, either the serial port or a USB port can be used with the appropriate cable. If two cases are to be used (6 zones and 32 thermocouples) the USB port must be used. Correctly matching cables must be used.

Use the RS232 communications lead to connect the computer's serial port on the rear of the computer (9 pin 'D' connector) to the HBC-4301 control box "Computer" connector.

Use the RS485 communications lead and the USB / RS485 adapter to connect the USB port of the computer to the HBC-4301 control box "Computer" connector.

When the program is started for the first time the factory installed Operator / Password to gain access to the program is:

Operator: Default

Password: password

Note: The entry is case sensitive. The password must be between 6 and 32 characters.

This will log the user on with the authority of a **Manager**. For further details of the password system see chapter 22, **Operators and Passwords**.

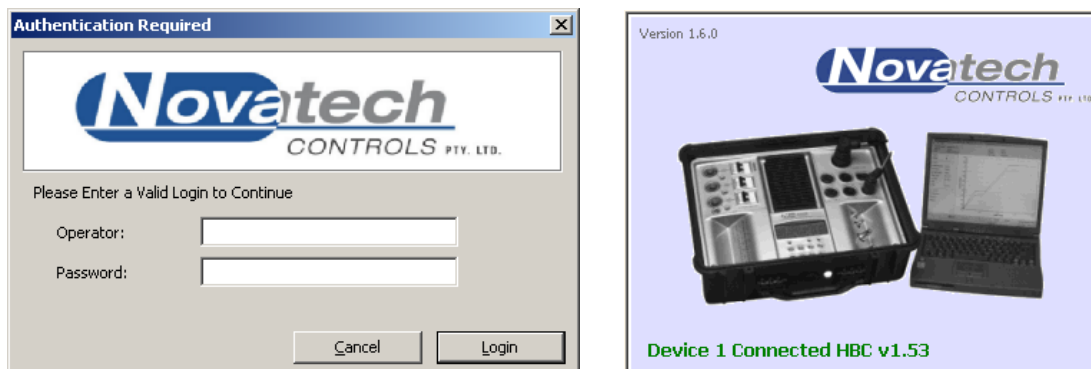


Fig. 2 Start Screens

After the operator has been authorised the program will continue on with the start up splash screen and to look for the HBC-4301 control case connected to the nominated serial port. The "Version #.#.#" at the top of the splash screen shows the version of the computer software. The report at the bottom of the splash screen during the start up shows the version of the software running in the control case, and which control cases have been found on the network.

A status box at the bottom of the **Main Menu** screen will report the status of the connection. Dots will be seen following the word "Connecting" until communication is established.

If the HBC-4301 control case is not communicating with the PC the power output will be inhibited from the zone outputs unless the zones are set to **Manual** power control. If communications between the PC and the control case are lost during a temperature cycle both the PC and the control case will sound an alarm.

4.3 Using the Menus on the Computer

The function keys or the cursor keys can be used to select the menu functions. The [ESC] key is always used to exit back to the previous menu.

The tab key or the enter key can be used to move between the fields within a menu function.

A prompt line is provided at the bottom of the screen showing the selection of keys available for the current cursor position.

A pointing device can also be used with the program, however once an operator is familiar with the program it will be generally quicker to use the keys.

4.4 Main Menus

Notes on Using the Menu screens

The program functions accessible via the menu system have been split into two groups.

- **Main Menu**
- **Control Functions Menu**

When the program first starts, the **Main Menu** is displayed and provides access to the most common of the functions that are required to run a repair cycle.

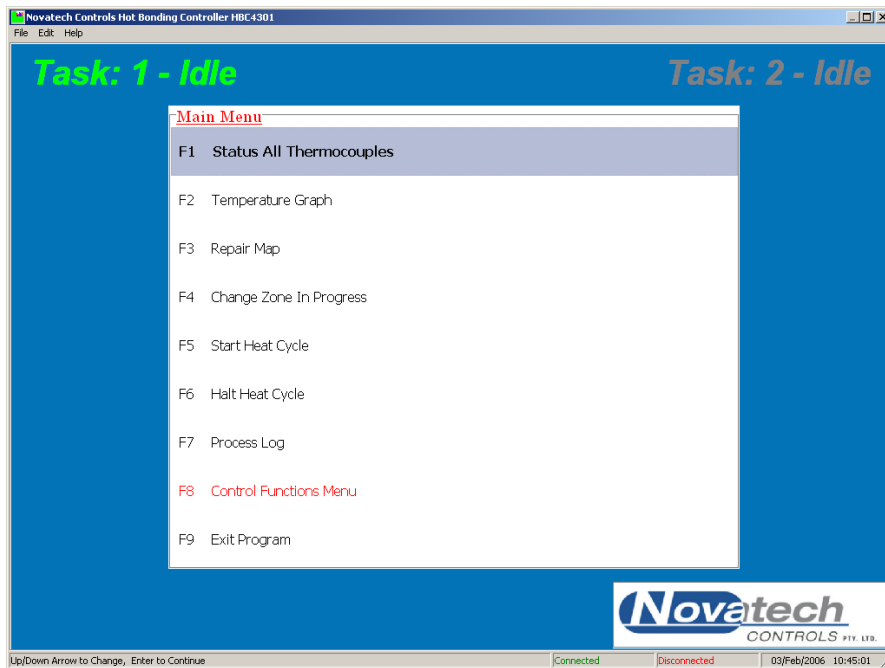


Fig. 3a Main menu screen

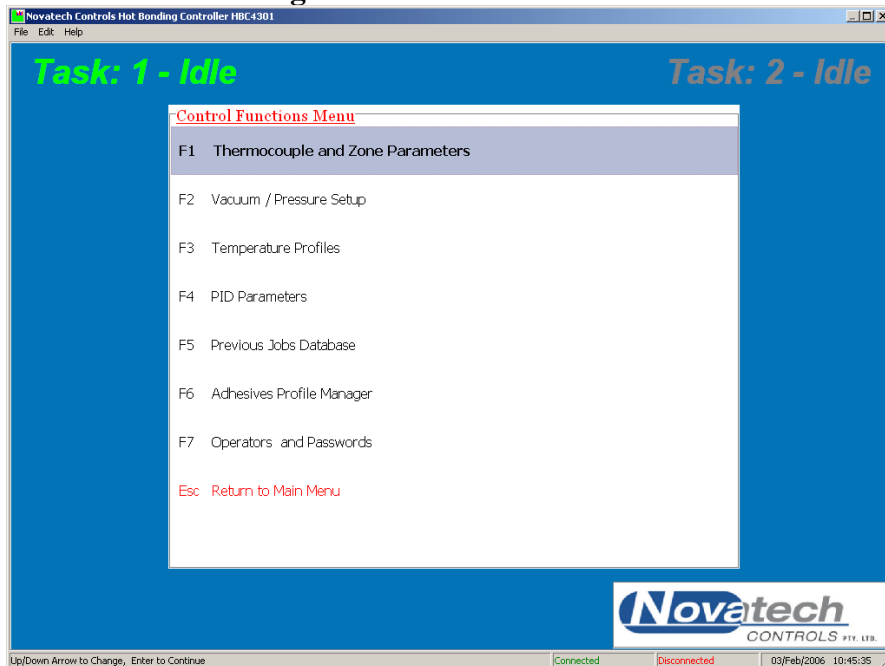


Fig. 3b Control Functions Menu

The **Control Functions Menu**, which is displayed when F8 is pressed in the **Main Menu**, provides access to functions that are used to configure a heat cycle or to save and recall completed cycles.

1. To select a function either -
 1. Press the corresponding function key. (i.e. In the **Main Menu**, Function key F3 will select Repair Map)
 2. Use the up/down cursor keys to highlight the required function.
Press the ↵ key.
 3. Double click with the pointing device, either an external mouse or the built in touch pad.
2. To access the **Control Functions** menu, press the F8 key, and then press a function key as shown in the Control Function menu.
3. To return from a function to the Main Menu, press [ESC].

All operations are accessible using the keyboard or the pointing device (except the drawing of the repair map needs the pointing device).

This page has been left blank intentionally.

5. CONFIGURING THE THERMOCOUPLES AND ZONES

NOTE: It is possible to configure two tasks in the HBC-4301 software. Use the 1 and 2 keys while in the Main Menu to swap between tasks.

5.1 Thermocouples and Zones

The configuring of the thermocouples in the zones that they are physically mounted in can be done two ways:

Repair Map

Thermocouple / Zone Configuration table

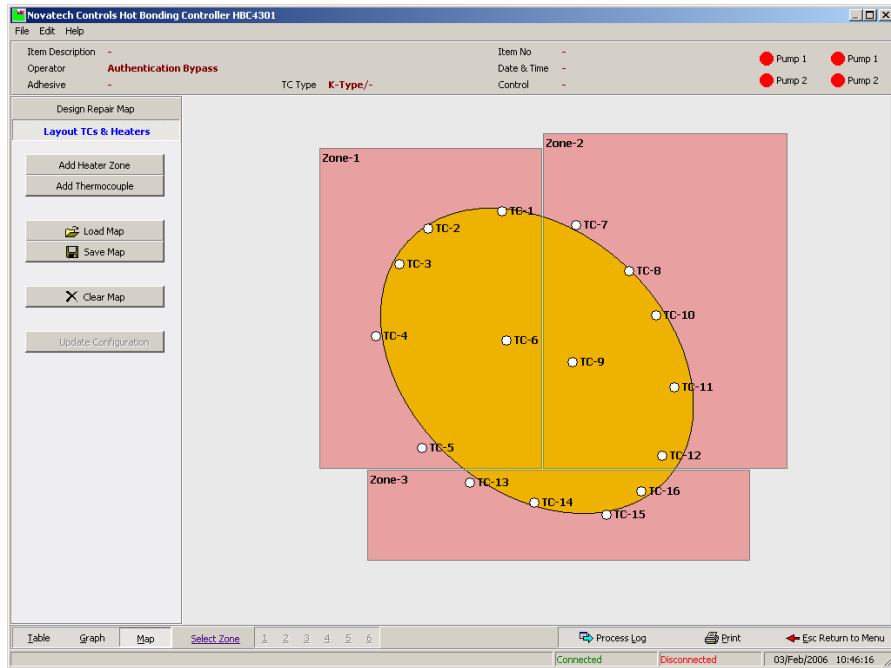


Fig. 4a Thermocouple / Zone Configuration using the Repair Map

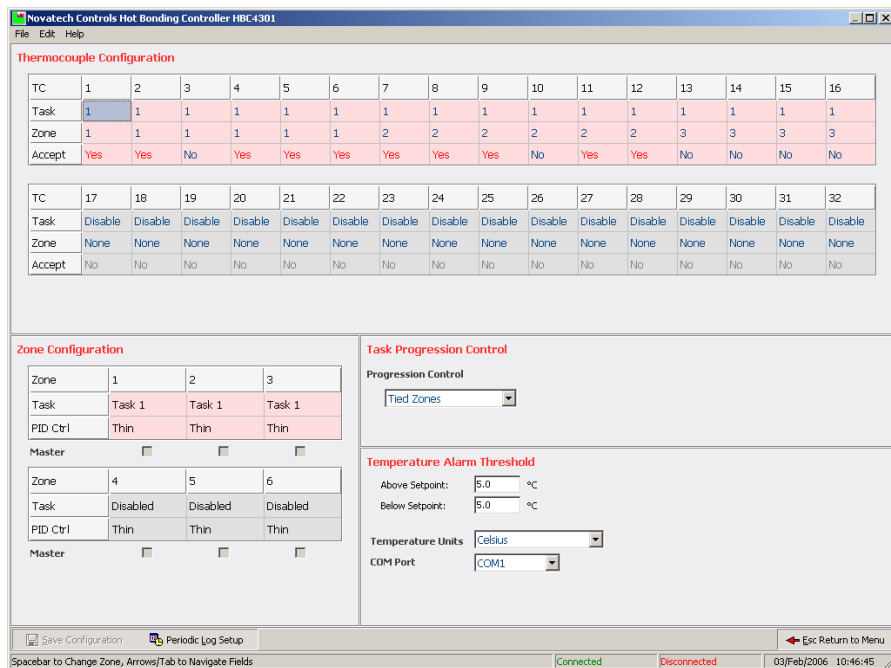


Fig. 4b Thermocouple / Zone Configuration using the Thermocouple Table

5.1.1 Repair Map

(Main Menu, Repair Map)

The repair map is the easiest way to assign the thermocouples to the zones. Firstly a repair shape is drawn. The zones and thermocouples are then placed on top of the repair in approximately the same position as they are on the actual repair.

Features of the repair map –

- A zone that has been placed on the repair map can be moved and reshaped any time until the task has been started.
- A zone or a thermocouple can be removed by right-clicking on a zone or thermocouple to bring up an item specific menu.
- A thermocouple can be selected / deselected as an acceptance thermocouple by right-clicking on the thermocouple to bring up the menu.
- The last map layout will be restored when the computer is turned on the next time.
- Using the “Update Configuration” button will transfer the map into the zone / thermocouple configuration table.
- After a map has been created the table can still be viewed and edited until a job is started. However, if after editing, the map does not match the table, a warning will be shown when starting a job or entering the map screen.
- The map will be saved when a repair is completed and can be recalled later.

It is important that –

- The thermocouples are placed within the area of the zone that they are to be controlling.
- A thermocouple placed outside all zones will still be monitored and can be selected as an acceptance thermocouple but will not be used for the control of a zone.

NOTE: When a repair cycle is running, the map can be used to monitor the temperatures. The temperature of each thermocouple is displayed attached to the thermocouple position. If a thermocouple is above or below the set point the temperature flag will change colour.

It is necessary to use the pointing device to create the repair map.

To create a repair map:

1. Select **Repair Map** from the **Main Menu (F3)**
2. Click the **Design Repair Map** tab.
3. Select the shape of the repair (either Ellipse or Round Rectangle)
4. If **Round Rectangle** is selected, use the **Horizontal** and **Vertical** slide bars to shape the corners of the rectangle.
5. Use the **Repair Angle** to rotate the **Ellipse** or **Rectangle** (Windows™ 2000 and later).
6. Click the **Layout TC's & Heaters** tab.
7. Place the heaters over the repair shape by clicking the **Add Heater Zone** button.

NOTE: Place the cross where the top LH corner is required. Press & hold the LH mouse button and drag the bottom RH corner of the heater to the required position.

8. Place a thermocouple by clicking the **Add Thermocouple** button.

NOTE: Individual heaters and thermocouples can be deleted by right clicking the item. Use the left button to drag and re-shape the heaters and move thermocouples.

When the layout is complete click the **Update Configuration** button to transfer the layout to the **Thermocouple & Zones Parameters** table. If further changes are required simply use the F3 (**Repair Map**) key from the Main Menu.

5.1.2 Thermocouple Table

(Control Functions Menu, Thermocouple & Zone Parameters)

This screen can be used to configure the program to match the repair configuration. It can be created from the **Repair Map**. See chapter 5.1.1. The table changes will be save when exiting the screen. Selections are generally made by pressing the **space bar**.

Features of the Thermocouple Table –

- The screen uses colour-coding to quickly identify the zones and the tasks. **Task 1** is coloured **pink** and **task 2** is coloured **blue**. Disabled thermocouples and zones are grey.
- To place a thermocouple in a zone toggle (using the space bar) the **Zone** cell in the appropriate thermocouple column and make sure that the zone selected for the thermocouple is in the correct task. A zone can be disabled from the task row in the **Zone Configuration** table.
- In addition to the thermocouple / zone configuration this screen allows the operator to select the highest / average temperature control, zones tied / follow mode etc.

NOTE: Although this screen allows the operator to change the configuration of zones and thermocouples, a change in this screen will not update the **Repair Map**. It is better to make any changes from the **Repair Map** screen and then let the computer update the thermocouple table automatically.

NOTE: After a temperature cycle has been started it is not possible to change the temperature / zone configuration except to change the:

- PID values
- Acceptance status of a thermocouple
- Remove a thermocouple

Use the tab and the cursor keys to navigate around the screen, and the space bar to change a selection. The prompt line shows the available keys for each cell.

Thermocouple Configuration

The table shows the association of the tasks, zones and thermocouples. A thermocouple in the task can be enabled as an **Acceptance** thermocouple from the **Accept** row of the table. A thermocouple shown as **None** in the **Zone** row is enabled but will not be used for control of any zone. It can still be monitored or used as an Acceptance thermocouple.

NOTE: Thermocouples 17 to 32 and zones 3 to 6 can only be used if a secondary control case is connected.

5.1.3 Zone Configuration

This table allows the operator to link the zones into a task and set the PID group. The actual PID numbers are set in the **PID Parameters** screen (Control Functions Menu, PID Parameters).

The PID option is a convenient way to allow for different thicknesses of the structure being patched. There are three sets of PID values selected with the space bar. They can be individually set in the **PID Parameters** screen (Control Functions Menu, PID Parameters).

5.1.4 Task Progression Control

The control of a zone during a cycle run can be selected to be from the hottest thermocouple that is enabled for the zone **or** from the average of all thermocouples enabled for the zone (if this option is available from the Thermocouple and Zone Parameters screen).

If a thermocouple goes open circuit during a run cycle the program will automatically display it as “o/c” (open circuit) in the **Status All Thermocouples** screen, and will disable it from zone control.

If an individual thermocouple appears faulty, or you want to remove it from control of that zone, it can be disabled during a run by unplugging it. Within 2 seconds it will be recognised as open circuit and removed from control of the zone.

The HBC-4301 incorporates a **Guaranteed Soak** function. This means that the soak times will automatically extend to make sure that the heater is within the **Dev** level set in the **Zone Temperature Profiles** screen (default is +/-5°C, 0°C will disable the automatic soak extension) for the required time for each soak period.

The **Progression Control** sets the way the set point temperature is generated.

If **None** is selected the set point for each zone within a task will progress to the next stage in a temperature cycle independently of all other zones in the task.

If **Tied Zones** is selected the program will synchronise the start time of each of the ramp stages of the temperature cycle. The soak time of a zone that has completed the soak time before another zone will automatically extend to make sure that all zones start the next ramp at the same time. If one zone is slower to respond than another, they may get out of step. Tying the stages will hold the faster zones in the soak stage until the slower zones catch up.

The **Follow Zones** mode can be used where one zone is slower than others and it is required that all zones are kept at the same temperature. The temperature of the slow zone can be used as the set point temperature of the faster zones so that the temperature of all the zones will exactly follow the same temperature profile.

To use the **Follow Zones** mode, select **Follow Zones** from the **Zone Heater Profile Control** section of the **Thermocouple & Zones Parameters** screen and then start the temperature profile as described in chapter 8. If the temperature of one zone is unable to keep up with the set point temperature, select the slow zone as the **Master** in the **Zone Configuration** section of the **Thermocouple & Zones Parameters** screen. The slow zone will still attempt to follow the original programmed set point, but the other zones will follow the actual temperature of the slow zone.

5.1.5 Temperature Alarm Threshold

The values set in the **Above Set Point** and **Below Set Point** boxes determine the levels at which the **Thermocouple High Temperature** and **Thermocouple Low Temperature** alarms are triggered. The temperature boxes in the **Repair Map** screen and the **Status All Thermocouples** screen will change to **dark blue** and **red** at these trigger points. The temperature boxes in these screens will also change to **light blue** and **pink** when the temperature exceeds half of the trigger values.

The temperatures can be displayed in either Centigrade or Fahrenheit.

The serial **Com Port** of the computer used to communicate with the HBC-4301 control box can be set as either COM1, COM2 or COM3, or whichever serial ports are available.

5.2 Vacuum / Pressure setup

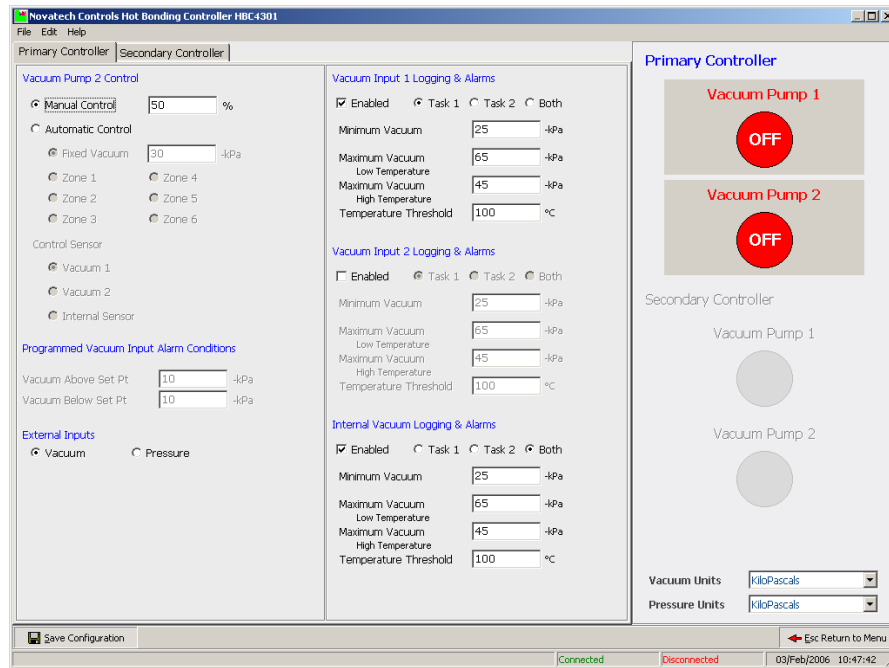


Fig. 5 Vacuum / Pressure Setup Screen

5.2.1 Vacuum Pump #1

This pump has the same pumping capacity as vacuum pump #2. It can be turned on and off from the PC or the control case. The vacuum level can be monitored by using either of the external vacuum sensors.

For more details on the specifications of the vacuum pumps see chapter 7, **Vacuum Pumps**.

5.2.2 Vacuum Pump #2 Control

The pump can be controlled in three ways:

1. **Manual Control** - Set the pump drive level to a value between 0 and 100%
2. **Automatic Control, Fixed Vacuum** - Set a vacuum pressure level. The HBC-4301 will control the pump #2 drive to maintain the vacuum level using the **Control Sensor**.
3. **Automatic Control, Zone Control**- The vacuum will follow the vacuum profile set in the **Control Functions Menu, Zone Temperature Profiles**. The operator can set the vacuum level for each stage of the temperature profile.

The pump can also simply be turned **on and off**. When the screen is selected the space bar can be used to toggle the pump #1 on and off. If the Tab key is pressed before the space bar the pump #2 will be toggled on and off.

The vacuum can be displayed in Kilopascals (kPa), Inches Hg, Atmospheres or bars. The pressure can be displayed in Kilopascals (kPa), PSI or bars.

The external inputs must be **Enabled** before the measurement will be displayed or graphed. The vacuum or pressure tick box selection must match the selection in the HBC-4301 control case.

See chapter 9.4, **Monitoring the vacuum / pressure** for more details.

This page has been left blank intentionally.

6. CREATING A TEMPERATURE CYCLE

There are 100 heat cycles stored on the hard disk that can be edited and renamed before starting a cycle.

Select the **Temperature Profiles** from the **Control Functions** menu.

You will be prompted for a cycle number. Page up, page down and the cursor up and down can be used to view the list of cycle descriptions available.

A new cycle description can be entered by using the tab key to highlight the **Edit Description** line or press "S", Alt S or Enter to continue to the edit screen.

The **Temperature Profiles** screen has a graph on the left and a table on the right. The line of text above the graph is the description of the cycle.

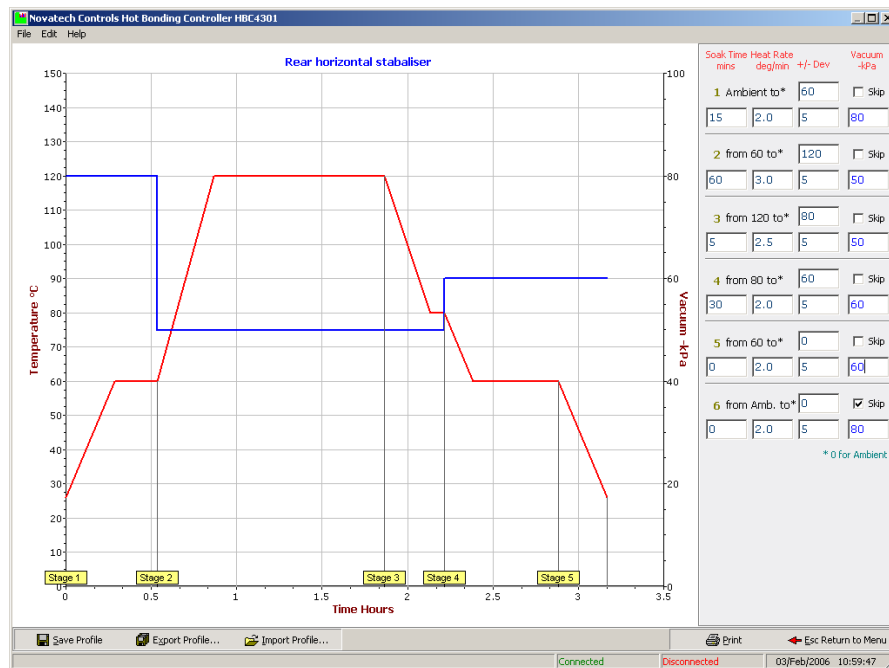


Fig. 6 Temperature Profiles Screen

Use the Tab key, cursor keys or the mouse to move to the data point you wish to change, and type the new value. Use the [ESC] key to take you back to the main menu screen. A prompt dialog box will appear when exiting this screen if changes have been made.

The 5 cells in each stage are:

1. Target temperatures.
2. Soak time, 0 to 2000 mins (33 hours) per stage, with a maximum of 200 hours for a complete cycle.
3. Heat / cool rate in °C/F / minute, 0.5 to 10.00.
4. Deviation temperature for the guaranteed soak function, 1 to 10°C/F (0 to disable the guaranteed soak feature).
5. The controlled vacuum level for this stage of the cycle. The automatic control of the vacuum is not available if **Pressure** is selected on the **Vacuum / Pressure Setup** screen.

NOTE: Any stage can be skipped if the **Skip** tick box is ticked. Use the mouse and the left click or the tab key to move to the tick box and the space bar to select / deselect the skip.

This page has been left blank intentionally.

7.1 Introduction

The HBC-4301 control case is supplied with **two** vacuum pumps. Both pumps are turned on and off electronically from either the control case or from the PC. In addition, both of the vacuum pumps can be controlled to adjust the vacuum pumping rate.

The air supply pressure can be monitored at the PC or at the control case. The air supply pressure should be between 400 and 600kPa. Provision has been made for two external vacuum or pressure sensors that can be connected directly to the repair vacuum bag, and there is an internal vacuum sensor that is connected to vacuum pump #2. These sensors can be logged and graphed with the temperature profile. See **Main Menu, Temperature Graph**. The range of the external transducers must be set in the control case, calibration menu function #5.

7.2 Vacuum Pump #1

The vacuum pump #1 can be switched on and off from either the PC or the control case. The pump cannot have the vacuum level set. It is intended that it be used as a backup pump or for providing a separate vacuum source when two tasks are being run.

See the next two subsections for the details of controlling the pump from the PC and the control case.

7.3 Vacuum Pumps

The vacuum pumps in the HBC-4301 are electronically controlled. The air supply is pulsed on and off rather than operating all the time 3 times per second. This has the advantage that the volume of compressed air is reduced.

The vacuum control in the HBC-4301 can be set manually or controlled to a pre-programmed level. The pre-programmed level can be a fixed vacuum or can be automatically changed for each stage of the temperature cycle. When the pumps are being controlled to a set vacuum level they will be switched off if the vacuum level is close to, or above the required vacuum level.

7.4 Controlling the Vacuum Pumps from the PC

NOTE: The control case must be set to **Primary** or **Secondary** before the pump can be controlled from the remote PC.

The HBC-4301 was designed to be operated from the PC with the HBC-4301 control case set to **Primary** or **Secondary** mode in the setup functions. In this remote mode of operation the vacuum pumps can be turned on and off at the control case or from the PC and the vacuum level can be controlled to a pre-set level at the control case or from the PC.

The pumps can be made to operate:

- At a fixed pumping rate
- To a fixed vacuum level that automatically compensates for leaks
- At programmed vacuum levels (Pump #2 only)

For more details of the PC screen that controls the operation of the pump see chapter 5.2, **Vacuum / Pressure Setup** in which there is a description of the screens that are available from the **Control Function Menu**.

7.5 Controlling the Vacuum Pumps from the Control Case

Either of the pumps can be turned on and off from the control case. In addition the pumping rate can be controlled. The pumps are the same size and therefore have the same pumping capacity.

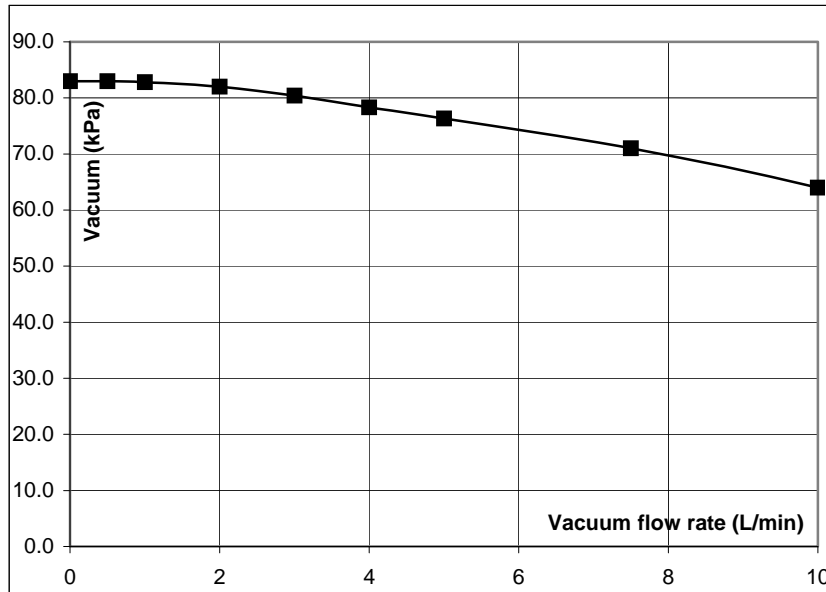


Fig. 7 Pumping Rate of the Vacuum Pumps

The graph shows the relationship of the maximum vacuum pressure to the volume of an air leak into the bonded repair bag. Both pumps can be connected to one repair to increase the suction flow.

Press the **Vacuum Display** key to show the status of the vacuum pumps. One press will allow control of pump #1 and the second press will allow control of pump #2. Either pump can be turned on or off by then pressing the **Vacuum On/Off** key while pointing to the required pump number.

7.5.1 Manual Control Mode

1. Press the **SETUP** key to enter the setup mode.
2. Use the Function keys to find the setup function #13 (#14 for pump #2). Use the **OPTION** keys to select **Manual** mode. Press the **ENTER** key.
3. Use the **CURSOR** keys to select “Duty Cycle xx%”. Set the vacuum drive percentage level. A higher number will provide a higher vacuum pressure and flow rate. Press the **ENTER** key.
4. Press the **SETUP** key to return to the **RUN** mode.

The selected pump will now cycle on and off at a fixed pumping speed. Monitor the vacuum on either the internal vacuum sensor or with one of the external vacuum sensors. Adjust the pump drive rate to adjust the vacuum level.

7.5.2 Automatic Mode, Fixed Vacuum Level

This allows the vacuum to be controlled to a fixed set vacuum level from the control case.

NOTE: If setup #1 is selected as **Primary** or **Secondary** mode the vacuum pump settings of the PC will overwrite the vacuum pump settings of the control case. The same feature is available by using the PC to set the vacuum control.

1. Press the **SETUP** key to enter the setup mode.
2. Use the Function keys to find the setup function #13 (#14 for pump #2). Use the **OPTION** keys to select **Automatic** mode. Press the **ENTER** key.
3. Use the **CURSOR** keys to select “Auto Level -30kPa”. Set the vacuum level in kPa, or the units that have been selected in calibration menu function #11. Press the **Enter** key.
4. Use the **CURSOR** keys to select “Control ...”. The options are -
 - Control External #1
 - Control External #2
 - Control Internal Sensor (only available on pump #2)
5. Press the **SETUP** key to return to the **RUN** mode.

The control case will now attempt to control the pumping rate of the vacuum pump to maintain the set vacuum pressure. If the leak rate of the repair is very small the pump may stay off for a few occasional pump cycles. If the leak rate of the repair is high the leaks should be plugged. A high leakage rate wastes energy and causes the pump to operate unnecessarily.

NOTE: If the leak rate is less than 0.1 l/min at a low control vacuum (i.e. less than -45kPa, 13.3 Inches Hg) the vacuum pressure may vary by 6 kPa or 1.8 Inches Hg. Providing a leak of 0.3l/min will allow better control of the vacuum at low vacuum levels.

7.5.3 Automatic Mode, Programmed Vacuum Levels

In **Local** mode, when running a temperature cycle from the control case, the vacuum will follow the vacuum steps set in setup function #7 to #12. **Automatic** vacuum mode must be selected in setup function #13 (14 for pump #2).

7.5.4 Vacuum Alarms, Local mode

1. Press the **SETUP** key to enter the setup mode.
2. Use the Function keys to find the setup function #15, **Vacuum Alarms**. Use the **OPTION** keys to select **Enabled** and press the **ENTER** key.
3. Use the **CURSOR** keys to select **Sensor**, and the **OPTION** keys to select the sensor that is to be used for the alarm.
4. Use the **CURSOR** keys to select **alarm reference** point, either Programmed or Absolute.
5. Use the **FUNCTION** keys to go to function #16. Set the vacuum level in kPa for the high vacuum and the low vacuum alarms. Press the **ENTER** key.

The alarm will be active if the vacuum level is above or below the vacuum set level by the amount set in setup functions #22 or #26 and #27.

6. Press the **SETUP** key to return to the **RUN** mode.

This page has been left blank intentionally.

8. STARTING AND STOPPING A HEAT CYCLE

8.1 The easiest way to get a selected cycle running

If the heater zones and thermocouples have already been configured in the **Thermocouple and Zone Parameters** screen, the procedure is:

1. Select the **Task** by pressing **1** or **2** from the main menu. (The selected task will be highlighted in green)
2. Select **Start Heat Cycle (F5)** from the main menu.
3. From the table screen, press the “**L**” key, to select a pre-recorded temperature cycle.
4. Press **↵**, to choose the default (**Enabled Zones**) or select the required zone number.
5. Scroll through the list of cycle recipes until you find the one you want to run or type the number in the **Cycle No.** box followed by a **↵**. Change the **Description** if required or **↵** to continue.
6. The operator now has the option to edit the time / temperatures / vacuum of the selected cycle. The changes entered this way will not be saved to disk for any future runs. The changes to the temperature profile will only be used for the running of this cycle. Press [ESC] to continue, and **↵** to save changes.
7. Press “**S**” to enter the details of the work being done. Use the tab key to toggle between the fields. The **Description** and **Item number** must both have an entry or the task cannot be started.
The operator is given the option to have the computer automatically monitor the cycle that has been selected against the known adhesive characteristics.
Confirmation of the changed parameters will appear for each zone that is selected.
8. Press the **↵** key to start the temperature cycle.

To monitor the cycle in progress, go to the **Repair Map, Temperature Graph** or the **Status All Thermocouples** screen (See chapter 9.1).

8.2 The Start Cycle Screen details

The **Start Cycle** screen shown below provides a summary in tabular form of the cycles last used for each of the heater zones.

Task 1	Zone 1 Enabled	Zone 2 Enabled	Zone 3 Enabled	Zone 4	Zone 5	Zone 6
Set Point	60 ± 5 °C	60 ± 5 °C	60 ± 5 °C			
Stage 1 Soak Time	15 min(s)	15 min(s)	15 min(s)			
Heat Rate	2.0 °C/min	2.0 °C/min	2.0 °C/min			
Set Point	120 ± 5 °C	120 ± 5 °C	120 ± 5 °C			
Stage 2 Soak Time	60 min(s)	60 min(s)	60 min(s)			
Heat Rate	3.0 °C/min	3.0 °C/min	3.0 °C/min			
Set Point	80 ± 5 °C	80 ± 5 °C	80 ± 5 °C			
Stage 3 Soak Time	5 min(s)	5 min(s)	5 min(s)			
Heat Rate	2.5 °C/min	2.5 °C/min	2.5 °C/min			
Set Point	60 ± 5 °C	60 ± 5 °C	60 ± 5 °C			
Stage 4 Soak Time	30 min(s)	30 min(s)	30 min(s)			
Heat Rate	2.0 °C/min	2.0 °C/min	2.0 °C/min			
Set Point	Ambient	Ambient	Ambient			
Stage 5 Soak Time	0 min(s)	0 min(s)	0 min(s)			
Heat Rate	2.0° C/min	2.0° C/min	2.0° C/min			
Set Point						
Stage 6 Soak Time						
Heat Rate						

Fig. 8 Start Cycle Table Screen

This screen provides a table of data for all of the heater zones.

The top line shows the zone number.

The second line shows whether or not the heater is enabled for that heater zone.

The remaining lines on the screen show the set points, soak times and the heat rates for each of the six heater zones.

The functional keys available on the **Start Heat Cycle** screen are:-

“D” Edit

After the cycle has been selected, fine tuning of the cycle for one or more of the zone profiles may need to be done. Pressing the “D”, and selecting the heater zone number, key will take you to the edit screen for that heater. This edit facility is now the same as when selected from **Change Zone in Progress (F4)**.

“L” Select Cycle

Press the “L” key to select a different temperature profile to be run for any of the zones.

“C” Copy

Press the “C” key to copy the temperature profile from one zone to another zone.

“S” Start

Press the “S” key to continue the cycle start process. You will be prompted with a window to enter the –

- Description of the item to be bonded
- Item number

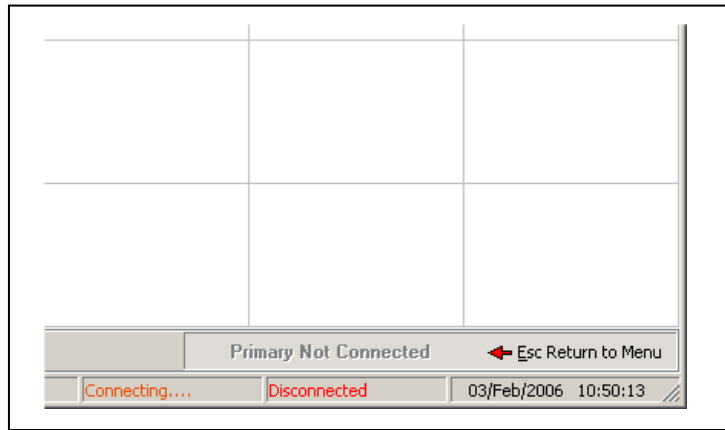


Fig. 9 Start Cycle Table Screen warning message

If the button **Start Bonding Cycle** does not appear in the bottom right hand corner of the table screen the reason will be identified in the button position. Messages include:

<i>Message in the button</i>	<i>Reason and the solution</i>
Primary Not Connected	The PC is not communicating with the primary HBC-4301 control case. Check that the HBC-4301 has been set to Primary in setup function #1, and the communications cable at both ends.
Secondary Not Connected	The PC is not communicating with the secondary HBC-4301 control case. Check that the HBC-4301 has been set to Secondary in setup function #1, and the communications cable at both ends.
Zone x not ready	One of the nominated zones does not have any thermocouples associated with the zone. Check the Repair Map layout, and that the thermocouples are operating correctly (not o/c).
No enabled zones	No zones have been associated with the task. Check the Repair Map layout.
Task active	The task is running already. Use the Halt Heat Cycle function from the Main Menu to stop the heat cycle.
Local mode	The control case is set to Local mode. Use the Setup button and the Function keys on the HBC-4301 control case to find setup function #1. Set the option to Primary or Secondary .

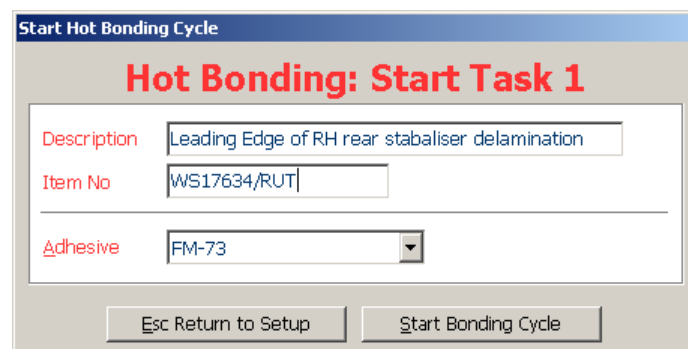


Fig. 10 Start cycle screen data entry

After the above two fields have been entered, an optional adhesive can be entered.

The adhesive entry facility allows the HBC-4301 to check the temperature cycle being started and warn the operator if the temperature is outside the recommended limit of the adhesive.

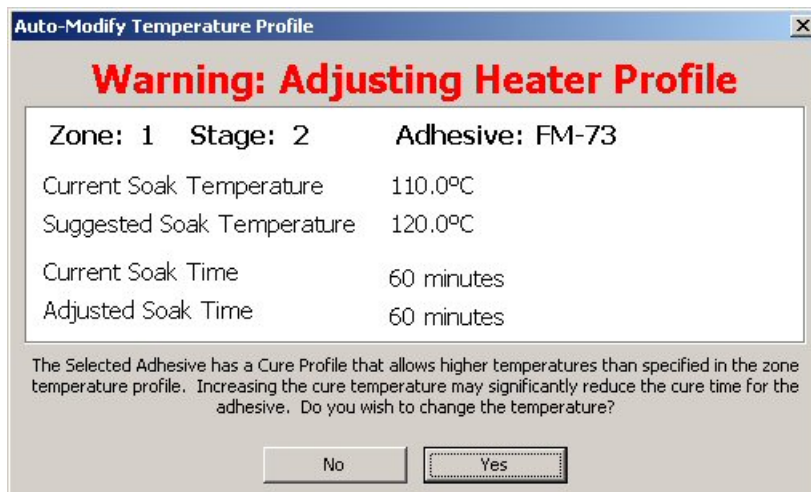


Fig. 11 Start cycle screen, Automatic Adhesive Selection Parameters

The adhesive monitoring feature also allows the HBC-4301 to automatically adjust the soak time during the soak stage if any part of the repair does not reach the cure temperature.

After the **Start Bonding Cycle** button has been clicked the bonding cycle will be started. To monitor the progress of the cycle see chapter 9, **Monitoring the Operation**.

8.3 Halt Heat Cycle

Selecting this screen will stop the temperature profile for the selected task.

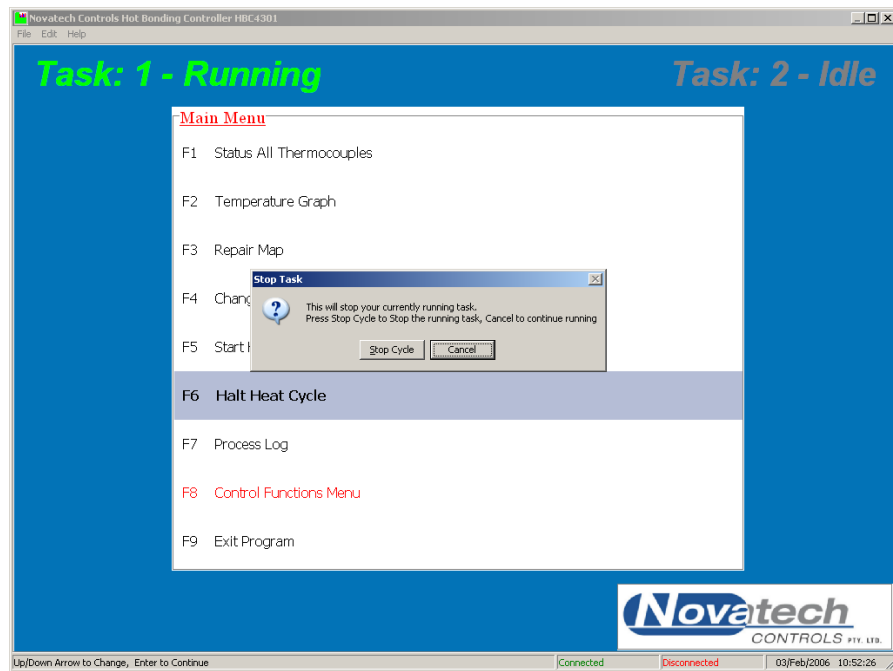


Fig. 12a Halt current task screen

If the task is not running the following dialog box will be shown

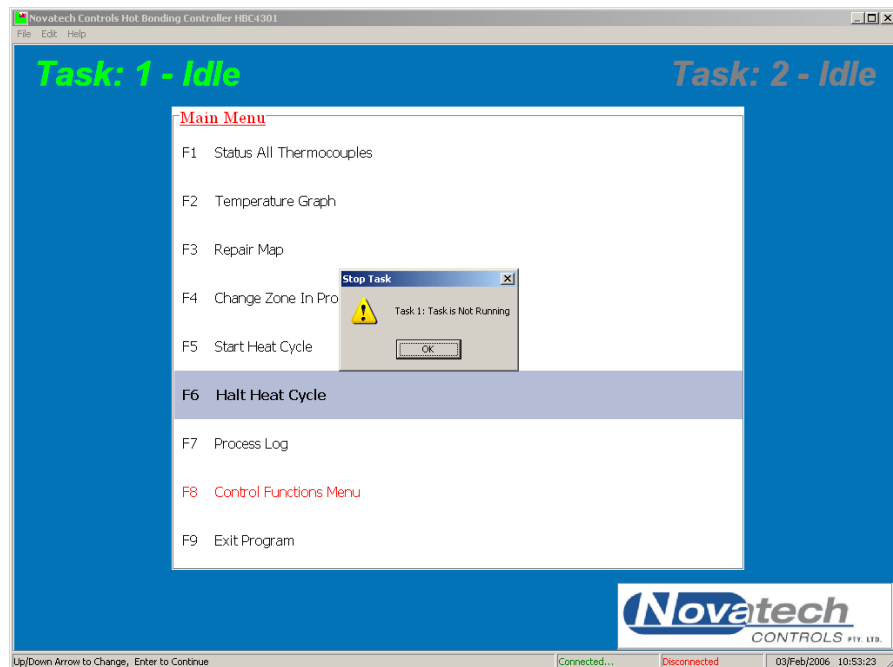


Fig. 12b The current task is not running

If a task is stopped before the cycle has been completed or if the temperature cycle is left to complete the whole cycle, the following dialog box will be shown.

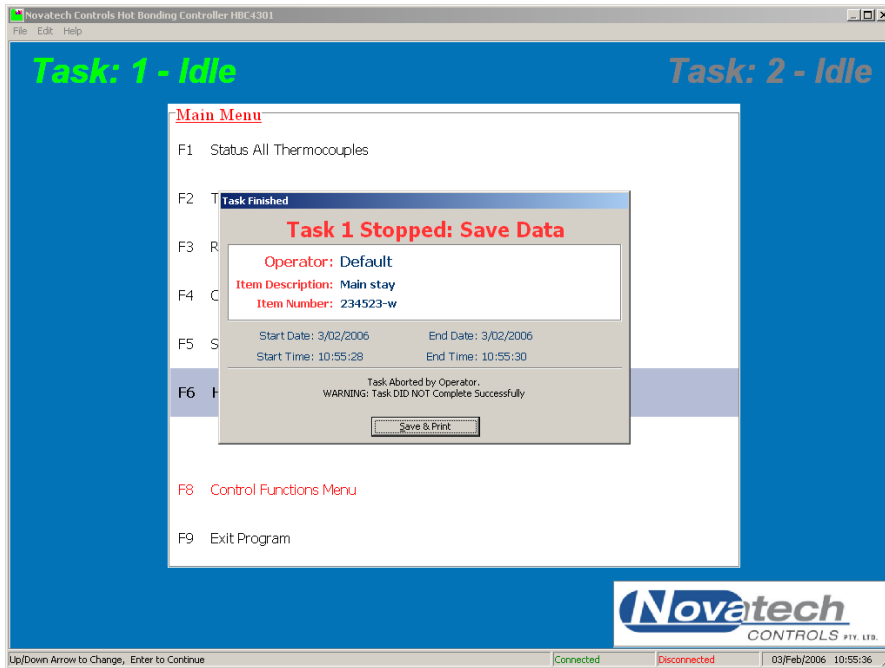


Fig. 13a The task has been stopped / completed

There is no choice; the profile must be saved. An unwanted task can be deleted by someone logged in as a manager from the **Previous Jobs Database** screen.

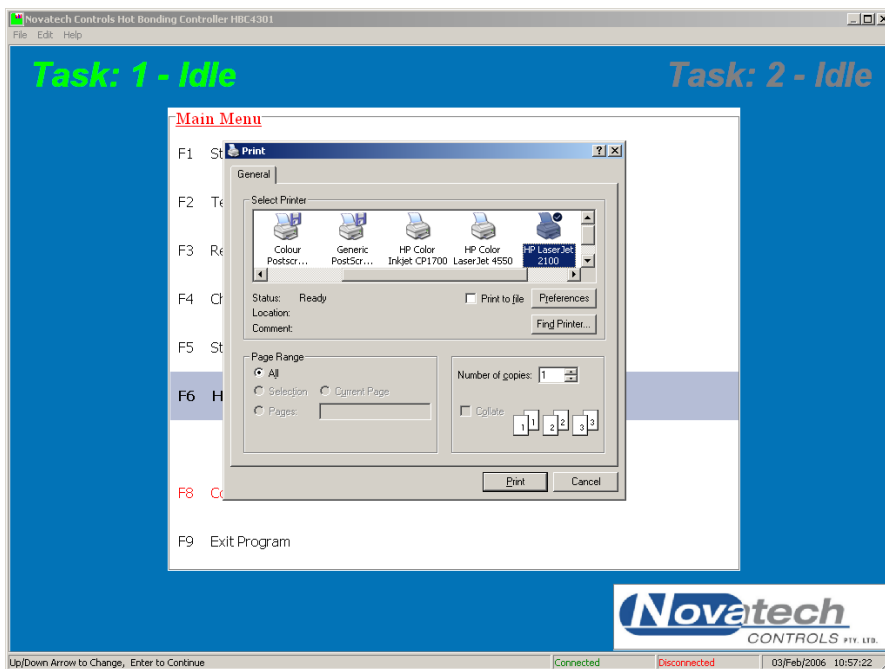


Fig. 13b The task has been stopped / completed

If the printer is not connected when the task is finished the graphs / map / process log can be printed later by recalling the job from the **Previous Jobs Database** screen.

8.4 Operating with two control cases

8.4.1 Connecting the cases

The computer must be connected to one of the HBC-4301 control cases. Use the connector labelled **COMPUTER** on the control case and the USB adapter connected to the computer.

When a second control case is to be networked to the first case a network cable must be connected between the two control cases. Either of the two connectors on the control cases labelled **NETWORK** can be used.

The computer must use either a USB port or an RS485 port. One control case must be set to primary and the other to secondary in setup function #1, and the communications in the control case must be set to RS485 in the calibration menu function #10 (see chapter 8.4.2 below).

In summary –

1. An RS485 computer cable must be used from the PC to the first control case, not the RS232 lead.
2. The computer must have a USB port or an RS485 communications port. Do not make an RS485 port by using a USB port to an RS232 port and then another adapter to make the RS485 port. The only 2 options are -
 - If the PC has a USB ports then use a USB to RS485 adapter. Software is provided on the installation disk for the National Instruments NI485 USB adapter.
 - If the PC has a true hardware RS232 port, then an RS232 to RS485 adapter can be used.
3. A Novatech network cable must be used between the two cases.
4. Both control cases must be set to use RS485 communications. This option is found in the calibration menu.

NOTE:

The RS485 communications cable can still be used with a single HBC-4301.

- i.e. After the option has been set to RS485 it **does not** need to be changed back to RS232 as long as the RS485 cable is used.

For details of the wiring connections see chapter 18.1, External wiring.

8.4.2 Configuring the cases

The two items in the configuration of the control case that are necessary to operate two cases together are –

1. Select RS485 as the option in setup function #10 in the calibration menu functions #10
2. Select “Secondary” in setup function #1 in one of the control cases

8.4.3 Configuring the software

When the computer is connected to the first case and the cases are networked together, the bottom right hand corner of the notebook PC screen will show **Connected** in both the primary (LH box) and the secondary (RH box) status boxes.

The secondary case will then provide the connections for zones 4 to 6 and the thermocouples 17 to 32.

This page has been left blank intentionally.

9. MONITORING THE OPERATION

NOTE: It is possible to configure two tasks in the HBC-4301 software. Use the 1 and 2 keys while in the Main Menu to swap between tasks.

After the temperature cycle has been started the temperature of the repair can be monitored from the three monitoring screens. Either the temperature of an individual zone can be shown as a graph or all the thermocouples can be shown grouped in numerical order and grouped in zones.

An additional feature of the HBC-4301 hot bonding controller is the ability to create a map of a repair. The map can be used to recall the physical layout of a previous repair, but can also be used to monitor the hot and cold areas of the repair. For further details see chapter 9.3, **Repair Map**.

9.1 Status all Thermocouples

This screen displays:

- The current operating status of all of the thermocouples and zones
- The start time and cycle run time
- The vacuum level of both remote transducers
- The ambient temperature
- The temperature of the power controller heat sink

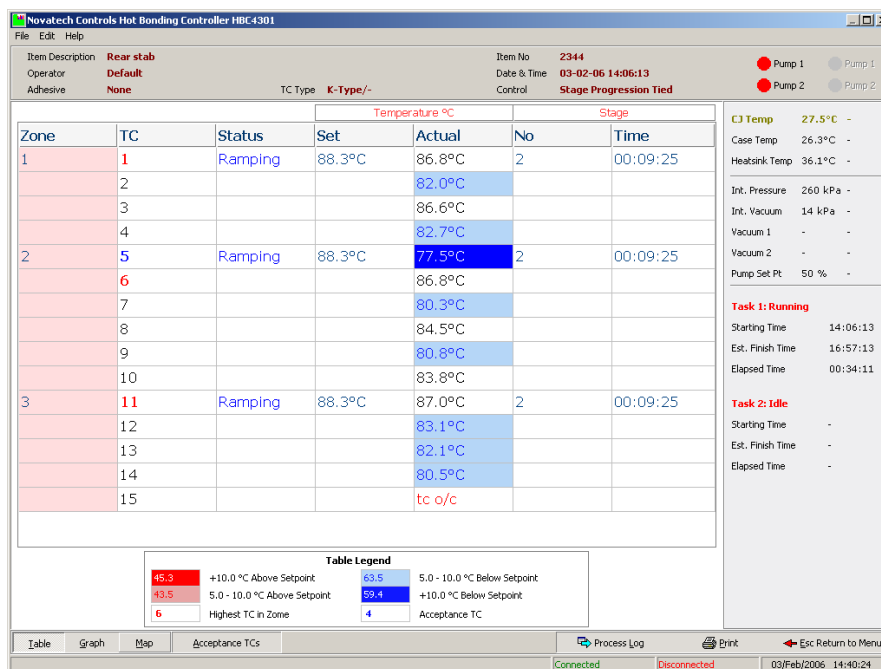


Fig. 14 Status All thermocouple's screen

It can be seen that the two tasks are clearly identifiable by the colour coding of the Zone number column. Pressing “A” will toggle all the acceptance thermocouples on / off.

The TC column identifies the thermocouple in each zone. From the legend on this screen it can be seen that the hottest thermocouple number in each zone is shown in **red**. The coldest acceptance thermocouple in each task is shown in **blue**.

If the **Actual** temperature is within half of the **Temperature Alarm Threshold** limits (set in the **Thermocouple and Zone Parameters** screen) of the set point temperature, the temperature will be shown in black. Otherwise the temperature cell will be either **light blue**, **pink**, **dark blue** or **red**.

The two **Stage** columns show which part of the temperature cycle is being run for each zone.

The **Cold Junction** and the **BU Cold Junction** (Back Up, shown on the control case display with the **TC TEMPS** key) temperatures are measured inside the control case on the thermocouple connector strips and are used for the thermocouple cold junction compensation. The **Case** temperature is also measured from inside the control case and is used as a safety backup for the two cold junction sensors.

The **Heatsink** temperature should not be allowed to go over 70°C. This will only be likely if the ambient temperature is over 45°C and all three zones are driving very large heaters at over 80% duty cycle.

The **Vacuum1** and **Vacuum2** show the measurements taken by the external vacuum sensors.

The status of the two vacuum pumps can also be seen from this screen. Clicking on the buttons will turn the pumps on and off.

9.2 Temperature Graph

A graph of all the zone control temperatures can be graphed together. Any of the zone temperature graphs can be selected by using the keys shown at the bottom of the graph.

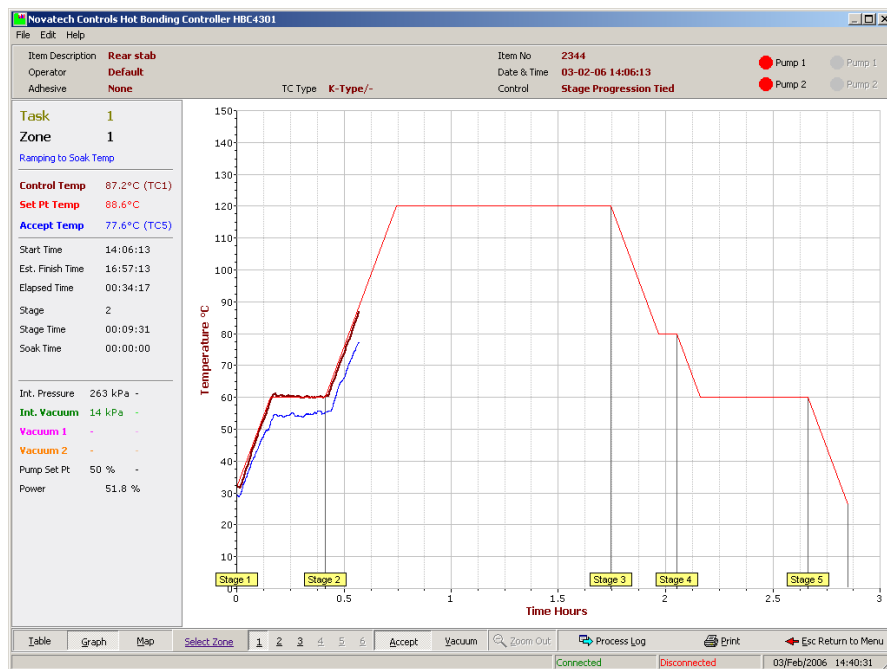


Fig. 15 Temperature Graph Screen (with Vacuum scale)

9.2.1 Navigating Around the Temperature Graph

Details of any part of the graph can be examined by zooming up on the graph. Hold the left mouse button down while pointing to the top-left corner of the area you want to zoom in on. Drag the mouse to the bottom-right corner of the area and release the mouse button. The graph will be redrawn to fit the zoom area. Pressing the Z key or clicking the Zoom Out button will return the graph to the full screen.

The area being graphed can be moved by holding the right mouse button down while pointing in the mid area of the graph.

9.2.2 Temperature Graph Details

The screen shows a graphical profile of the temperature (and vacuum if selected) for the selected zone. The top of the screen shows:

1. The identification of the operator and the task
2. The selected adhesive (None, FM73 etc.)
3. Confirmation of the thermocouple type selected in the control case.
4. The status of the vacuum pumps. These buttons can be used to switch the pumps on and off.

In the left panel of the screen is:

1. The selected task (selected from the Main menu)
 2. The selected zone (selected with the number keys 1, 2 and 3, or up to 6 if enabled)
 3. The status of the zone (Running, Idle, Ramping, Soaking)
 4. A soak progress bar when soaking is in progress
 5. The actual temperature being used for the control of this zone (highest or average).
 6. The current set point temperature for this zone
 7. The acceptance thermocouple (the coldest thermocouple enabled as an acceptance thermocouple)
-
8. The time that the task was started
 9. The estimated finish time of the task. This time will reflect the changes produced by the **Automatic Adhesive Soak Extension** and the **Guaranteed Soak** functions
 10. The elapsed time. The length of time for which the task has been running
 11. The stage number of the temperature cycle that is currently running
 12. The time that the current ramp or soak has been running. The soak time will not commence until the actual temperature is within 5°C (default limit) of the soak temperature. For further explanation of Guaranteed Soak, see chapter 23, **Glossary of Terms**.
-
13. The internal pressure is measured in the control case at the air inlet connection
 14. The internal vacuum is measured at the vacuum pump #2 connection
 15. The vacuum 1 and vacuum 2 pressures are measured in the repair by external sensors plugged into the sensor inputs
 16. The vacuum pump set point shows either the vacuum pump drive level in percent (when in **Manual** mode) or vacuum set point in either kPa or inches Hg
 17. The percentage of full power being sent to the heater for this zone

The **RED** profile shows the set point temperatures that have been calculated and sent to the temperature controller. The actual set points will vary from the selected cycle profile when the **Guaranteed Soak** control and the **Automatic Adhesive Soak Extension** operate.

Superimposed on this, will be the actual temperature profile verses time for the current process as it has been running. This is the hottest or average temperature (as selected) for this zone.

The **blue** trace records the acceptance thermocouple temperature.

i.e. The lowest temperature of all the thermocouples nominated as acceptance thermocouples on the **Thermocouple and Zone Parameter** screen.

From the main **Temperature Graph (F2)** screen, you have several option keys:

NOTE: The three buttons on the left of the control bar (Table, Graph and Map) are common to the three monitoring screens (**Status all Thermocouples**, **Temperature Graph** and the **Repair Map**)

- 1) Pressing **T** provides immediate access to the **Status all Thermocouples** screen without going through the **Main Menu**.
- 2) Pressing **G** provides immediate access to the **Temperature Graph** screen without going through the **Main Menu**.
- 3) Pressing **M** provides immediate access to the **Repair Map** screen without going through the **Main Menu**.
- 4) Pressing the **Z** key will **zoom** back to the full screen view of the graph. **Zooming up** to take a more detailed look at any area of the graph can be achieved by dragging the mouse over the desired area from top left to bottom right.

2) Pressing the **P** key will **print** the screen. This will provide an immediate hard copy of the temperature / vacuum profile, and numerical data.

3) Any of the other heater zones with this task can be displayed simultaneously from the main **Temperature Graph** screen by simply pressing the zone number (1 to 6).

4) The **Acceptance** graph can be switched on or off with the **A** key.

5) Pressing the **V** key will switch on and off a vertical scale and two traces for the vacuum transducers on the graph. The scale is from zero to full scale of the vacuum transducer.

6) The [ESC] key from any screen will return you to the Main Menu screen.

The status of the two vacuum pumps can also be seen from this screen. Clicking on the buttons will turn the pumps on and off.

9.3 Repair map

This is the most useful screen to monitor the performance of a heat cycle at a glance. The temperature of all the thermocouples can be seen superimposed onto a map of the repair.

The heaters can be set to an approximate shape and thermocouples placed in position as selected by the operator. Once the temperature profile has been started, the temperature tags will be attached to each thermocouple.

If a thermocouple is not within the temperature alarm thresholds (default settings are 2.5°C or 5°C, set in the **Thermocouple and Zone Parameters** screen) of the set point temperature the background of the temperature tag will be set to light-blue / pink or dark-blue / red. Using this method a cold or hot area of the repair will stand out at a glance.

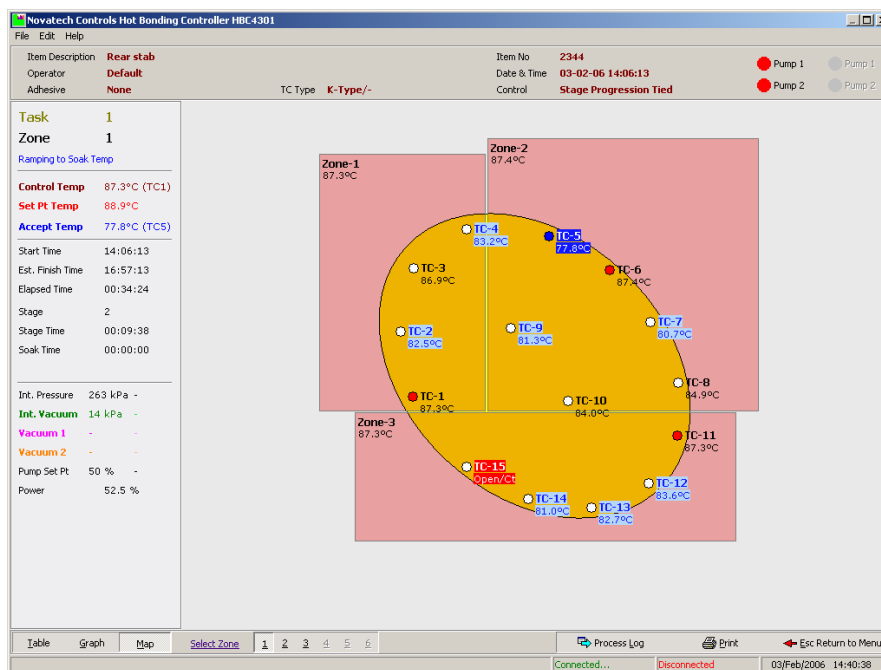


Fig. 16 Repair Map Screen

In addition to colour coding of the actual temperatures, the control thermocouple circle (if the highest thermocouple temperature has been selected for control) is set to red and the acceptance thermocouple is set to blue.

When the repair is finished, the repair map is also saved. When a repair temperature profile is retrieved for later examination the position of the heaters and thermocouples will also be available.

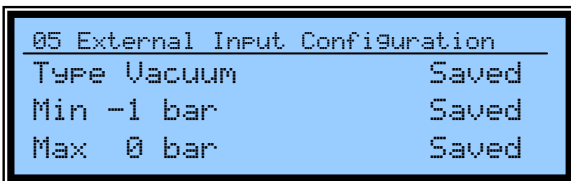
9.4 Monitoring the vacuum / pressure

9.4.1 On the control case...

The HBC-4301 has the ability to monitor the vacuum or the pressure being applied to a repair. Two sockets on the control panel (VACUUM 1 and VACUUM 2) are able to read a 4-20mA signal from external transducers.

The measurement of vacuum / pressure is then displayed on the three monitoring screens (Status All Thermocouples, Temperature Graph and Repair Map). It can also be graphed on the Temperature Graph screen.

The scaling of the transducers must be done from the HBC-4301 control case. Use the CALIBRATION menu function #05.



Set the **Type** to **Vacuum** or **Pressure** as required.

Set the **Min** value to the vacuum end of the range of the transducer, and set the **Max** value to highest pressure of the transducer.

Transducer range	Set Min to...	Set Max to...
-1 to 0 bar	-1	0
-1 to 9 bar	-1	9
0 to 6 bar	0	6

The above configuration will allow the vacuum or pressure to be read correctly on the HBC-4301 control case.

9.4.2 On the notebook PC ...

To read the correct value on the PC the tick box for either pressure or vacuum must be selected the same as the HBC-4301 control case. The tick boxes are found on the **Vacuum / Pressure Setup** screen.

The external vacuum / pressure inputs must also be **Enabled** on the **Vacuum / Pressure Setup** screen before they will be displayed or graphed.

10. CHANGING A RUNNING TEMPERATURE PROFILE

The actual heat cycle currently being run may be altered while the run is still in progress without stopping the cycle. Select **Change Zone in Progress (F4)** from the main menu. An edit box will appear for selection of heater zone of control. Select the zone number between 1 & 3 (or optionally up to 6) that you wish to modify, and press ↵ or click on OK.

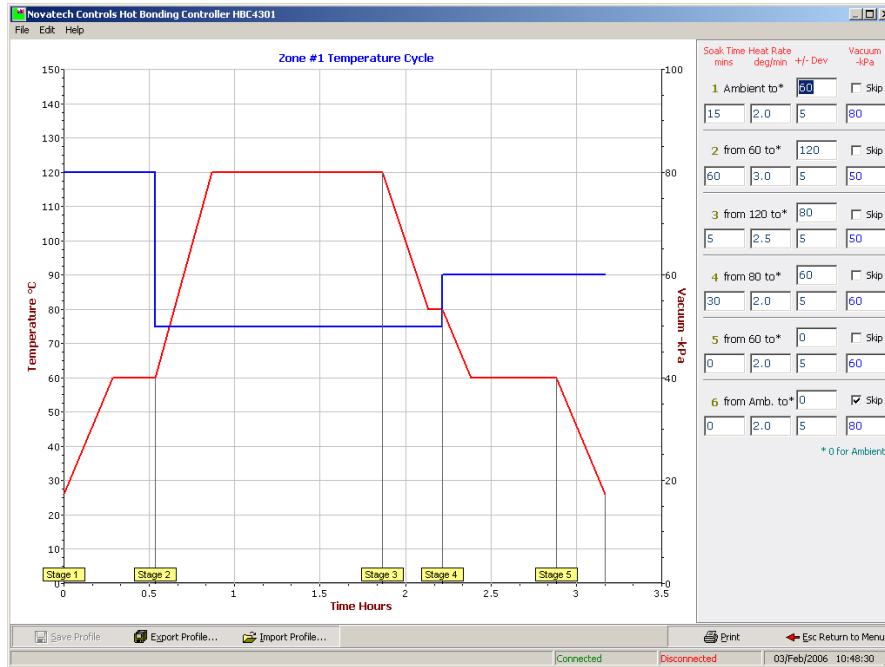


Fig. 17 Change zone in progress screen

The graph on the left of the screen will show you the shape of the temperature profile being used. The table of temperatures and times on the right define the shape of the profile. The table may be edited, and the result can be seen immediately on the graph.

Logically only the part of the profile that has not yet been reached can be changed. The following table shows what can be changed after a job has been started:

	Ramp rate	Soak temperature	Soak time
When ramping	Not changeable	Changeable	Changeable
When soaking	Not changeable	Not changeable	Not changeable
A stage that has not yet started	Changeable	Changeable	Changeable
A stage that has been completed	Not changeable	Not changeable	Not changeable

For example, the target temperature of a stage may be changed if the set point is still ramping up to the soak temperature. The ramp rate, target temperature and soak time can be changed of a stage that has not been started.

The prompt line at the bottom of the screen shows the options:

'S' Save profile

Save the current profile changes.

'X' Export profile

Export the current profile to the hard disk, floppy disk or a network drive.

'I' Import profile

Export the current profile to the hard disk, floppy disk or a network drive.

'P' Print

Prints the table and the graph.

[ESC] to accept / exit the screen

NOTE: Changing the profile of one heater zone will not affect the other zones.

For more details on editing the shape of the graph see chapter 6, **Creating a Temperature Cycle**.

11. PROCESS LOG, ALARMS

The **Process Log** screen is available from the **Main Menu**, F7.

The screen provides a periodic report of a repair with a record of all the **process messages** that have occurred during a task and all the **alarm messages**. The process log file is one of the files that is saved with the repair and can be recalled and printed later.

Entering the **Process Log** screen will accept any new alarms and stop the **audible alarm** from the HBC-4301. When the alarm messages have been assessed press the [ESC] key to exit the screen. Clicking the **Accept Active Alarms** button will also silence the alarm if the screen is open when an alarm occurs.

NOTE: The new messages are at the bottom of the screen and it may be necessary to scroll through to the last messages.

Date	Time	Log Description
03/02/06	14:06:13	Task Started Operator Default Supervisor Default Item Description Rear stab Item Number 2344 Adhesive None Thermocouple Type K-Type/- Temperature Control Stage Progression Tied Software Version 1.6.0 HBC-4301 Serial Number 1009/-
03/02/06	14:06:13	Zone 1 PID Parameters The PID parameters are set to (P=60, I=15, D=70)
03/02/06	14:06:13	Zone 2 PID Parameters The PID parameters are set to (P=60, I=15, D=70)
03/02/06	14:06:13	Zone 3 PID Parameters The PID parameters are set to (P=60, I=15, D=70)
03/02/06	14:06:13	Information Report Temperature °C, Vacuum kPa, Pressure kPa TC#1 TC#2 TC#3 TC#4 TC#5 TC#6 TC#7 TC#8 TC#9 TC#10 31.6 31.7 31.7 31.9 29.7 30.7 30.2 30.5 29.3 29.4 TC#11 TC#12 TC#13 TC#14 TC#15 31.0 31.5 31.7 31.4 310.0 ----- Zone#1 Zone#2 Zone#3 31.9 30.7 31.7 ----- Accept Case T ColdJnc HeatSnk Vac1 Vac2 IntVac IntPres 29.3 26.3/- 27.4/- 34.4/- -/- -/- 14/- 260/-
03/02/06	14:21:13	Information Report Temperature °C, Vacuum kPa, Pressure kPa TC#1 TC#2 TC#3 TC#4 TC#5 TC#6 TC#7 TC#8 TC#9 TC#10 60.2 57.6 59.8 58.5 54.8 60.3 56.8 59.1 56.8 58.5 TC#11 TC#12 TC#13 TC#14 TC#15 60.5 58.5 58.5 57.0 310.0

Fig. 18 Alarm and process reports screen

The **Cancel CRITICAL Temperature Alarm** button will allow the job to be restarted after the heaters have been turned off as a result of an extreme over temperature in any zone. This may have occurred because the thermocouples are not listed in the correct zone or because of a component failure in the HBC-4301. (See chapter 11.2.5 for more details)

The **“P”** key can be used to print an alarm report of all the alarms, process messages and status reports for the current job or it can be viewed / printed later from the **Previous Jobs Database** screen using the **View Log** button.

11.1 Process Log

An alarm is silenced by entering the **Process Log** screen. This screen is accessed from the **Main Menu** by pressing the **F7** key or using the mouse. It can also be accessed from any of the three monitoring screens (Status all Thermocouples, Temperature Graph, Repair Map) by clicking the **Process Log** button at the bottom of the screens.

The **L** key is a shortcut key to the Process Log screen from the monitoring screens. The **Esc** key will take you back to the monitoring screen that you came from. The Process Log button will flash when a new alarm occurs.

The HBC-4301 will record all events that occur during a repair. The following is a list of some of the possible process messages that are saved to the log file:

- Start task* / Stop task* / Resume task* / Finish task*
- Finish adhesive soak stage
- Communications reset / timeout
- Communications re-established
- Periodic log
- Zone PID parameters changed
- Thermocouple control state changed
- TC acceptance stage changed
- TC Disabled
- Zone cycle changed
- Control case reset
- Supervisor login/logout.

* - These log types also cause a periodic data log to be added to the process log file simultaneously.

11.2 Alarm List

In the same way as the process log records the messages during a repair, the alarm messages are also recorded. Some of the alarm messages are:

11.2.1 Thermocouple Temperature High / Low

- Triggered by any control thermocouple that drifts more than the Temperature Alarm Threshold degrees from its zone set point

11.2.2 Thermocouple Open Circuit / Reversed

- Triggered by any open circuit thermocouple.
- Prevents the affected thermocouple from being used as a control or acceptance.

11.2.3 Acceptance Temperature Low (only used when an adhesive has been selected)

- Triggered after 5 minutes if the acceptance temperature is below the minimum adhesive cure temperature during soak
- Will only trigger once the zone control temperature comes within the deviation range of the zone set point.
- Will re-alarm automatically after 5 minutes of being accepted if the conditions are not cleared.

11.2.4 No Acceptance Thermocouple (only used when an adhesive has been selected)

- Triggered if no acceptance thermocouple is found in a soak stage while attempting to automatically extend the soak time based on an adhesive profile
- Will only trigger once the zone control temperature comes within the deviation range of the zone set point.
- If the cause is unaddressed, it will cause the soak time to fail automatic soak extension based on the acceptance temperature.
- No soak extension will occur.

11.2.5 Critical Temperature Error

- Triggered if any control thermocouple reads significantly above the zone set point
- Significant temperature error is deemed to be 20C for a set point temperature <130°C, or 10°C for a set point temperature >130°C
- Instantly disables ALL heater outputs
- All heaters will be turned off and will only be re-started if a Supervisor or a Manager presses the CANCEL Critical Alarm button on the Process Log screen.

(See Chapter 22, Operators and Passwords, for how to log on and off)

11.2.6 Heater Fail Alarm

- Triggered by a heater output running at 100% power for 60 seconds

11.2.7 Heatsink Temperature Error

- Triggered by the heatsink temperature reading over 70°C.
- Does not stop the heater operation

11.2.8 Cold Junction Temperature

- Triggered if the cold junction sensor and backup cold junction sensor readings are more than 3°C apart

11.2.9 Case Temperature Alarm

- Triggered if there is a difference of more than 6°C between the case temperature sensor reading and the average of the cold junction / backup cold junction temperature sensors reading

11.2.10 High/Low Vacuum Alarms

- Manual Mode - Triggered as soon as the external vacuum readings are outside the vacuum alarm parameters.
- Auto Mode - Triggered as soon as the external vacuum readings are away from the vacuum set point by more than the specified level.
- Alarm conditions for each of the three vacuum sensors act independently for each of the two tasks
- Will re-alarm automatically after 60 seconds of being accepted if the conditions are not cleared.

For further details on the cause of alarm messages, see chapter 14.1 **Run Mode, Alarms** and chapter 17, **Troubleshooting Guide**.

In addition to the actual alarm message, the date and time of the message is also recorded.

11.3 Periodic Data Logging

The periodic data log keeps a record of the repair at predetermined intervals.

A variety of process parameters can be included in the periodic log that can be configured by using the **Periodic log Setup** button at the bottom of the screen.

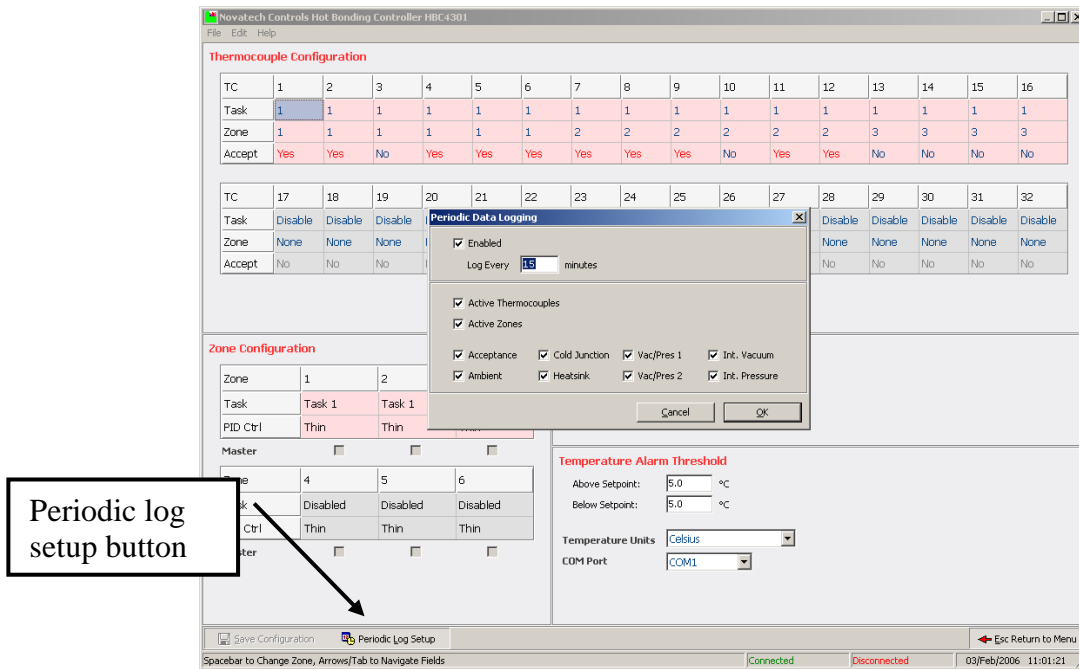


Fig. 19 Status log options screens

When the log occurs, the selected values can be seen on the **Process Log** screen and can be printed or exported from that screen.

12. HOW TO CLOSE THE PROGRAM

The program has been designed to run under Windows™ 98, NT4, 2000 or XP. When closing the HBC-4301 program follow the standard procedures for the Windows™ operating system that is on the PC.

Stop any tasks that are running and follow the prompts to save the data for later review.

Close the HBC-4301 program by pressing the **F9** key from the **Main Menu** or double click on the **Exit Program** line in the main menu.

Press ↵ to quit the program or use the tab key and then ↵ to cancel the closure.

Then follow the shut down procedure for Windows™.

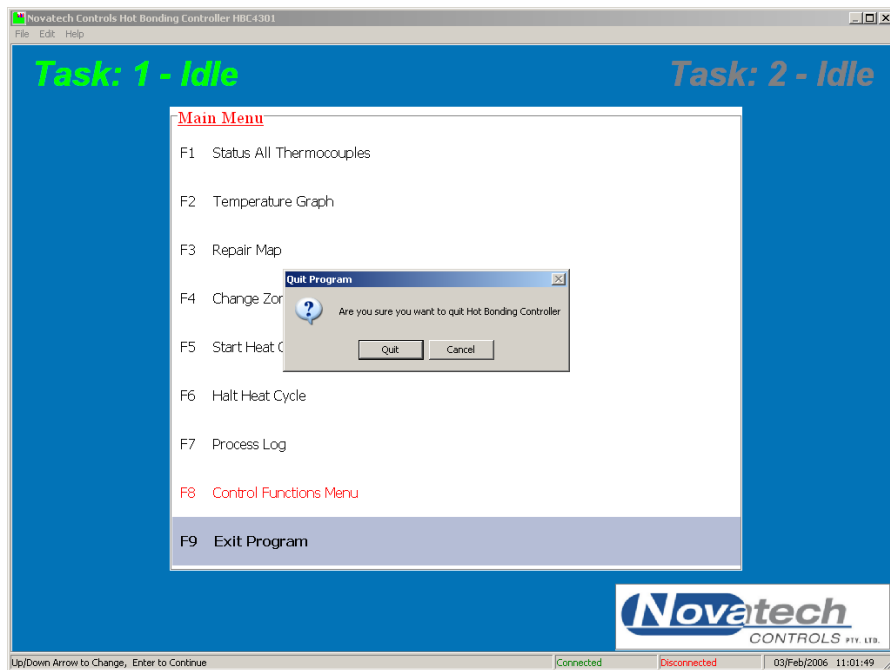


Fig. 20 Closing the Program

NOTE: All active jobs must be stopped before the operator can close the program.

This page has been left blank intentionally.

13.1 Introduction

The cure cycle can be automatically set, based on the time / temperature data on particular common adhesives types. A Manager can add additional adhesives by using **Control Functions** menu, **Adhesives Profile Manager**.

As a temperature cycle is started, the highest temperature soak stage can be set to the correct time and temperature for the selected adhesive. In addition, the soak time can be automatically adjusted to the correct cure time for the coldest part of a repair (the coldest acceptance thermocouple).

13.2 Controlling a repair to match the Adhesive Characteristics

During the running of the cycle, the coldest of the acceptance thermocouples is plotted on the **Temperature Graph** screen. The temperature of the acceptance thermocouples is analysed during the cure stage of the cycle. The correct soak time required to cure the adhesive is calculated and automatically adjusted. There will be a process log report made of the soak time entered into the process log screen at the end of the soak time.

The report is recorded on the **Process Log** screen in both cases. The report will show –

- zone number,
- extended soak time (calculated),

13.3 Entering a New Adhesive

If it is necessary to use an adhesive that is not already in the default list of adhesives in the HBC-4301 program, another adhesive can be added. The **password** requirements of the program will only allow modifications to the adhesives to be done by a **Manager**. For further details see chapter 22, **Operators and Passwords**.

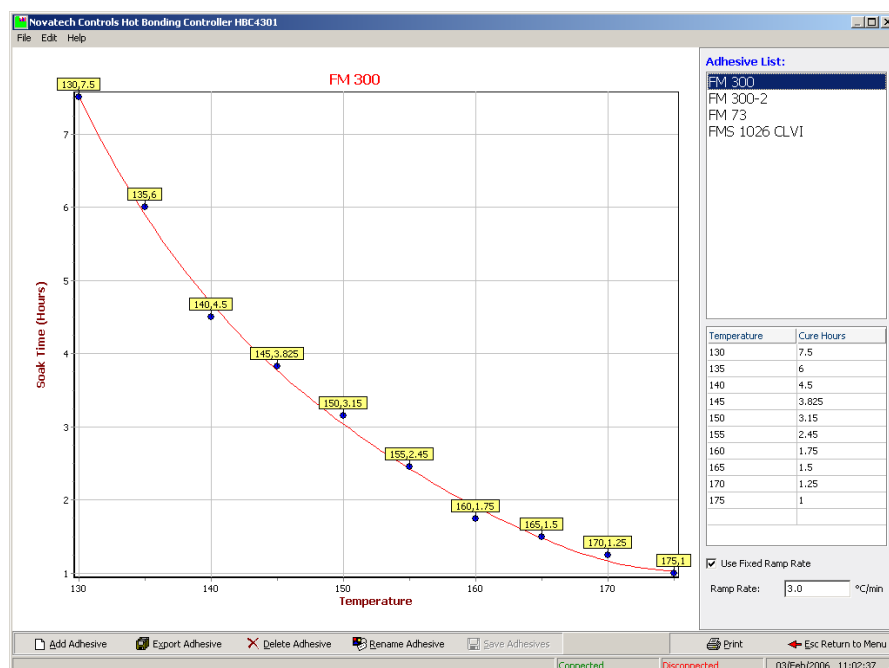


Fig. 21 Entry of Adhesive Data

The adhesive screen cannot be accessed while a temperature cycle is running.

Adhesive characteristics are added to the program by entering the time / temperature data points from the time / temperature curing characteristics chart. A minimum of 5 data points should be used. The points should be spread evenly through the graph.

If the points are not correctly entered, an error message will appear at the bottom of the graph-

Please Check Graph for Potential Errors

This message will appear if the program deems that there is an entry error, although it will not prevent the profile from being used.

A graph of the data will automatically be drawn as the points are entered showing a line of best fit through the data points. The data points can be entered in any order and additional points can be added to the end of the table.

The buttons at the bottom of the screen provide the following functions –

Add Adhesive	Add another adhesive from <ul style="list-style-type: none">• Data point entry• Imported from a file• Duplicated from an existing adhesive
Export	Export the adhesive in a form that can be saved or e-mailed to another HBC-4301 user
Delete	Delete the selected adhesive
Rename	Rename the selected adhesive
Save	Save the adhesive files
Use Fixed Ramp Rate	If the tick box is ticked the ramp rate for all stages of the job will use this rate for all stages of the job.
Print	Print the graph and coefficients of the selected adhesive
Esc Return to Menu	Return to the Control Functions Menu

14. BACKUP OPERATION FROM THE CONTROL CASE

The HBC-4301 control case has a built in 8-key keypad and a graphic display. They can be used to monitor the status of the thermocouples and vacuum system as well as set the power levels of the outputs in a manual mode. They can also be used to configure, start and stop a heat cycle.

The Local mode is designed to enable the HBC-4301 to configure and run without the use of the PC. However as the HBC-4301 was designed to take full advantage of the graphics available in the PC, using the HBC-4301 without the PC reduces the available features.

For example:

	Remote Mode (Using a PC)	Local Mode
Starting a temperature profile	Two simultaneous tasks	A single task
Temperature profile record	Indefinite record time	One record saved that can be uploaded to the PC later
Extended zone and thermocouple options	Guaranteed soak times and automatic adhesive based soak time monitoring	Fixed soak times
Number of zones and thermocouples	Up to 6 zones and 32 thermocouples	3 zones and 16 thermocouples

There are 3 modes of operation of the HBC-4301 keypad / display.

Run Mode

This is the normal mode. All the thermocouples can be monitored by their thermocouple number, hottest / coldest, zone temperature, identify thermocouple problems, cycle times and monitor alarm conditions.

Setup Mode

This mode is accessed by pressing the **SETUP** key. It allows thermocouple / zone association, setting of alarm levels, manual and automatic setting of the vacuum and heater outputs. A task can be started and stopped.

Extended Setup (Calibration) Mode

This is a restricted access mode. The calibration of the cold junction temperature, external vacuum sensors, internal vacuum and the internal pressure sensors can be changed and the date / time can be set.

In addition, the calibration of the thermocouples can be trimmed. A full description of the calibration is available in a separate **Advanced Operators Manual, Calibration**.



Fig. 22 HBC-4301 Control case keypad and display

The **SETUP** LED shows the current mode. If the LED is on, the current mode is Setup / Extended Setup mode. If the LED is off, the current mode is **RUN** mode.

The operation of the keys is identified on the label surrounding the keys by the colour of the text.

In the **RUN** mode the keys are identified by the **blue** text.

In the **SETUP** mode the keys are identified by the **green** text.

In **SETUP** mode most operations are done by using the **FUNCTION up / down** keys to select the required screen followed by the **OPTION up / down** keys to select the required value or item. In some screens the **CURSOR** keys are used to point to a thermocouple or zone before the **OPTION** keys are used to change the state of the thermocouple / zone.

After all operations are computed the **ENTER** key is used to lock in the change.

NOTE: A change is not recorded until the **ENTER** key has been pressed. If a different screen is selected with the Function keys or the operator exits the setup mode with the setup key the change will be lost.

If no keys are pressed for 30 seconds, the HBC-4301 will return to the **RUN** mode and changes will be lost unless the **ENTER** key has been pressed.

14.1. Run Mode

14.1.1 Key Functions in Run Mode

A flashing character in the top right corner of the screen is simply a heart beat indicator to show that the HBC-4301 electronics are operating normally.

The following screens are available in the **Run Mode** even when the HBC-4301 is operating in Primary or Secondary mode (See Control Mode in section 14.4).

Thermocouple temperatures

The first press of the **TC TEMPS** key will select the temperature of thermocouples 1 to 16.

An unconnected thermocouple or an open circuit thermocouple will be shown as “**O/C**”.

A thermocouple that has been connected in reverse polarity will be shown as “**Rev**”.

A thermocouple that is not enabled will be shown as “-”.

Thermocouple Temperatures											
1	121.4	5	121.4	9	120.6	13	119.6				
2	120.8	6	Rev	10	119.9	14	120.5				
3	O/C	7	120.9	11	120.0	15	121.0				
4	119.9	8	-	12	120.3	16	120.8				

The second press of the **TC TEMPS** key will display the cold junction ambient temperatures. The cold junction temperature and the cold junction backup temperature sensors must be within 3°C or a **Cold Junction** alarm will occur.

The ambient temperature and the power being delivered to the heaters will increase the temperature of the heatsink. The Heatsink should not be allowed to rise over 70°C.

Case & Cold Junction Temperature	
Cold Junction 1:	21.4
Cold Junction 2:	21.8
Heatsink Temp:	22.6
Ambient Temp:	27.7

Zone temperatures

The **ZONE TEMP** key shows the Zone number, zone set point temperature (if a temperature cycle is running), the thermocouple with the hottest temperature and the hottest temperature in each zone. The acceptance temperature is the coldest thermocouple in the repair.

Zone Temperature			
Zone 1:	120.0	TC 6	121.4
Zone 2:	120.0	TC 12	121.9
Zone 3:	120.0	TC 15	120.7
Acceptance Temp:	116.5	TC 2	

When no thermocouple / zone association is known –

Zone Temperature	
Zone 1:	No valid TC
Zone 2:	No valid TC
Zone 3:	No valid TC
Acceptance Temp:	No valid TC

Zone power

The **ZONE POWER** key shows the status of the heater outputs. The current power level is displayed together with the Auto / Manual status. The selection of the mode and the manual power level can be selected in the setup mode.

Heater Zone Outputs		
1	2	3
56 %	24 %	50 %
Automatic	Automatic	Manual

Cycle Times

The **TIMES** key is used to show the duration time of each stage of the temperature cycle during a task.

Current Task Information	
Started:	17 Jul 2008 15:18:03
Finish:	17 Jul 2008 21:44:53
Stage:	1 Ramping
Remaining:	5 Stage(s) 06:24:35

Current Task Information	
Remote Mode	
Task 1:	Idle
Task 2:	Idle

Vacuum / Pressure levels

The **VACUUM** key has two functions. Alternate presses of this key will toggle from having either **pump #1** or **pump #2** as the focus of the vacuum control screens.

The measurements are –

Available vacuum measured at the pump #2, air supply pressure and the vacuum level measured at the external vacuum sensors.

Vacuum & Pressure Sensors	
Int. Vacuum:	75 PSI
Int. Pressure:	-0.84 Atm
Ext. Vacuum 1:	-0.82 Atm
Ext. Vacuum 2:	n/a
Vac. Pumps	> 1 OFF
	2 ON

Vacuum On/Off

The **VAC ON/OFF** key is used to turn the vacuum pumps on and off. Alternate presses of this key will toggle one of the vacuum pumps on or off. The pump number is determined by the **Vacuum** key (see the previous screen description).

Note that the internal pressure is a reading of the vacuum pump supply pressure.

The internal vacuum reads the vacuum at vacuum pump #2. The vacuum at pump #1 must be read by one of the external sensors.

14.1.2 Alarms

When an alarm occurs the beeper will sound and the alarm LED will flash. Press the **ALARM** key and the HBC-4301 will go into the **alarm mode**. The **SETUP** LED will flash to confirm that it is in the ALARM mode. To return to the RUN mode press the **SETUP** key.

Thermocouple 1 Open Circuit	
Time Activated	
04 Jun 2008 17:13:15	
Status:	Active

When the **ALARM** key has been pressed the display will show the cause of the alarm.

To acknowledge the alarm press the **ENTER** key. The status of the alarm is shown on the bottom line of the display. This will change from “Active” to “Acknowledged” after the **ENTER** key has been pressed. Pressing the **ENTER** key will move the display onto the next alarm if there is more than one active alarm.

The time that the alarm was activated, acknowledged and self cleared can be seen by using the **CURSOR** keys.

The function of the keys after the **ALARM** key has been pressed –

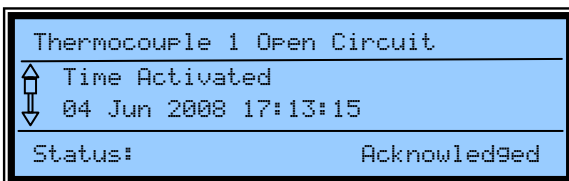
Key name	Key function
Cursor up & down	Examine the alarm times
Enter	Acknowledge an alarm, and go to the next active alarm
Function up & down	Go to the next / last alarm
Setup	Return to the RUN mode

If no keys are pressed for 30 seconds the controller will automatically return to the **RUN** mode display.

After all alarms have been acknowledged the alarm beeper will stop, and the alarm light will stop flashing but will be **ON** until all alarms conditions have been cleared.

If there are no **NEW** alarms the screens will only show the previously accepted alarms.

For example, the following screen shows a typical alarm message when the **ALARM** key is pressed, when there are no unaccepted alarms. The **CURSOR** keys can be used to read the time that the alarm was activated, acknowledged and cleared.



The available alarms, the causes and the *solutions* are listed below:

1. Thermocouple o/c xx

The nominated thermocouple (xx) is open circuit. It will automatically be removed from being used for control of the heaters.

Unplug the thermocouple and check the termination of the wires in the thermocouple plug. Repair or replace the thermocouple.

2. Thermocouple Reversed

The nominated thermocouple (xx) is wired in the reverse direction. It will automatically be removed from being used for control of the heaters.

Unplug the thermocouple and reverse the termination of the wires in the thermocouple plug.

3. Low Vacuum

The vacuum on one of the external sensors is low.

Reduce the air leaks on the repair, increase the vacuum pumping level or raise the alarm level in setup #26.

4. High Vacuum

The vacuum level on one of the external sensors is high.

Reduce the vacuum pumping level or lower the alarm level in setup #27.

5. TC Calibration Fail

An error has occurred during the manual thermocouple calibration trimming process.
*Check that the correct temperatures are being fed into thermocouple #1.
Check for obvious signs of physical damage on the inside of the control case on the HBC4300-3 circuit board. If no obvious cause can be located, send the control case for service.*

6. TC ADC Failure

An error has occurred during the automatic thermocouple calibration process. A zone that has been selected as **Auto** power in setup #28 will be turned off.
Check for obvious signs of physical damage on the inside of the control case on the HBC4300-3 circuit board. If no obvious cause can be located, send the control case for service.

7. Internal ADC Failure

An error has occurred during the automatic analog to digital converter calibration process.
Check for obvious signs of physical damage on the inside of the control case on the HBC4300-1 circuit board. If no obvious cause can be located, send the control case for service.

8. Cold Junction Temperature Error

The temperature difference between the two ambient temperature sensors used for measuring the cold junction temperature is greater than 3.0°C.

NOTE: This may indicate that there are thermocouple temperature errors caused by the fault causing this alarm.

*Check the temperature of the two sensors on the control case by pressing the **TC Temps** key three times. Check the calibration of the sensors by following the calibration process in the **Advanced Operators Manual, Calibration.***

9. Heatsink Temperature High

The temperature of the Heatsink on the control case is greater than 70°C.

*Check the temperature of the heatsink on the control case by pressing the **TC Temps** key three times. If possible, reduce the current load on the heater outputs.*

*Check the calibration of the heatsink sensor by following the calibration process in the **Advanced Operators Manual, Calibration.***

10. Case Temperature Error

The temperature difference between the cold junction temperature sensors and the case temperature is greater than 6.0°C.

*Check the temperature of the case sensor on the control case by pressing the **TC Temps** key three times. Check the calibration of the sensor by following the calibration process in the **Advanced Operators Manual, Calibration.***

11. Remote Alarm

An alarm has been sent to the control case from the PC. This can only happen if the control case is set to “Primary Controller” or Secondary Controller” in setup function #1.

Check the PC Process Log screen to determine what alarm is active.

18. Setup RAM Failure

The memory cell that holds the setup mode configuration and calibration data has failed. All heater outputs will be turned off if this fails.

Change memory cell MEM1 on the HBC-4300-1 PCB, or contact Novatech Controls.

14.2 Setup Mode Summary

When the setup key is pressed the HBC-4301 enters the **Setup mode**. The controller options can be checked or changed in the setup mode. The HBC-4301 will still communicate with the PC in setup mode. Pressing the setup key again will return the controller to run mode. It will automatically return to the Run mode after 30 seconds without any keys being pressed.

There is an extended setup menu available in the HBC-4301 that is used for calibration. However, this should not be changed unless it is used by a qualified technician with the correct traceable calibration instruments. See the Advanced Calibration manual for more details.

The following list is a summary of the accessible control functions:

1. Control case mode, Local / Primary / Secondary
- Thermocouples*
2. Zone 1 thermocouples
 3. Zone 2 thermocouples
 4. Zone 3 thermocouples
 5. Acceptance thermocouples
- Thermocouple temperature profile*
6. Enable editing of the temperature cycle, Yes / No **
 7. Enter the temperature profile (temperature ramp rate, hold temperature, hold time, vacuum programmed level), Stage 1 **
 8. Enter the temperature / vacuum profile, Stage 2 **
 9. Enter the temperature / vacuum profile, Stage 3 **
 10. Enter the temperature / vacuum profile, Stage 4 **
 11. Enter the temperature / vacuum profile, Stage 5 **
 12. Enter the temperature / vacuum profile, Stage 6 **
- Vacuum Pump Control*
13. Vacuum pump #1 control mode, control level and control sensor
 14. Vacuum pump #2 control mode, control level and control sensor
- Vacuum Alarms*
15. Enable vacuum alarms #1, set the level and the sensor **
 16. Enable vacuum alarms #2, set the level and the sensor **
- Zone Power Control*
17. Zone power control mode
 18. Set zone power levels
- Local Task Control*
19. Start / Stop local control temperature cycle **
- PID values ***
20. PID Parameters – Proportional, Integral and Derivative
- Measurements units selection*
21. External vacuum inputs
- Display units*
22. External vacuum inputs
- Display Vacuum / pressure / temperature units***

NOTES:

** These items will only be available to read but will not be able to be changed if **Primary** or **Secondary** is selected in Setup #1.

14.3 Keypad operation in the Setup mode

The **Function** keys are used to change screens. The screen number is shown in the top right of the screen.

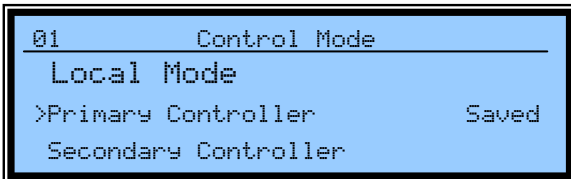
The **Cursor** keys will move the “>” up and down.

The **Option** keys will change the selected value or item.

The **Enter** key will move the “*” to the line where the “>” cursor is, and lock the new selection into the battery backed memory.

14.4 Setup Mode Details

1. Control mode



01	Control Mode	
>	Local Mode	
>	Primary Controller	Saved
>	Secondary Controller	

The primary control of the HBC-4301 is set with this control function.

Local is used when the control case is to be used without the use of PC.

Primary should be selected on the control case that has zones 1 to 3,

Secondary should be selected on the control case that has zones 4 to 6.

If **Primary** or **secondary** is selected –

The HBC-4301 is controlled by the notebook PC for multi tasks.

A temperature cycle will not be able to be started or stopped from the control case.

Some of the Setup functions will be read only (Will not be able to be changed).

Some of the Setup functions will not be shown.

The temperature and vacuum data will be saved in the PC.

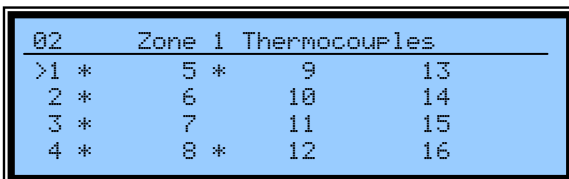
If **Local** is selected –

A single task temperature cycle will be able to be run from the control case.

The HBC-4301 is monitored by the notebook PC.

All zones must follow the same cycle.

2. Zone 1 Thermocouple Enable



02	Zone 1 Thermocouples		
>1 *	5 *	9	13
2 *	6	10	14
3 *	7	11	15
4 *	8 *	12	16

Select the thermocouples that are to be used for control in zone 1 by moving the cursor with the CURSOR keys and then press the ENTER key to enable / disable each thermocouple.

Any thermocouple that is selected here but not used will raise an “Open circuit” alarm when the temperature cycle is started.

An enabled thermocouple will have a “*” displayed.

A space indicates that the thermocouple has not been selected for control in this zone.

3. Zone 2 thermocouple Enable

This function is the same as the previous function.

4. Zone 3 thermocouple Enable

This function is the same as the previous function.

5. Acceptance thermocouples

05 Acceptance Thermocouples			
>1 *	5 *	9	13
2 *	6 *	10	14
3 *	7 *	11	15
4 *	8	12	16

An enabled thermocouple will have a “*” displayed.
A space indicates that the thermocouple has not been selected.

6. Editing a heater cycle

06 Edit Heater Cycle	
No	
>Yes	Saved

The cursor keys or the option keys will move the cursor.
The enter key will save the setting.

7. Configure the temperature profile, stage 1

07 Edit Heater Cycle Stage 1		
>Ramp Rate	2.0 C/min	Saved
Soak Temp	100 C	Saved
Hold Time	30 minutes	Saved
Vacuum Level	-25 kPa	Saved

Menu functions #7 to #12 will be hidden if **No** is selected in function #6.

The stage number will increment from 1 – 6 in the next functions.
The **CURSOR** key will move between the 4 lines.
The **OPTION** keys will ramp up and down the value.
The **ENTER** key will save the value.

The range of the values are –
Ramp rate – 0.1 to 10.0 °C/min (20.0 °F/min) (0 to disable the stage, and all following stages)
Soak temperature – 0 to 400 °C (800 °F)
Hold time – 1 to 360 minutes
Vacuum – 0 to 100 kPa

8. Configure the temperature profile, stage 2

9. Configure the temperature profile, stage 3

10. Configure the temperature profile, stage 4

11. Configure the temperature profile, stage 5

12. Configure the temperature profile, stage 6

13. & 14. Vacuum pump 1 control (and #2 control)

13	Vacuum Pump 1 Control		
>Manual		Saved	
Duty Cycle 50%		Saved	

14	Vacuum Pump 2 Control		
>Automatic		Saved	
Auto Level -31kPa		Saved	
Control External #2		Saved	

Function #14 is the same as function #13 for pump #2, however pump #2 can also be controlled from the internal vacuum sensor, and it can be set to “Programmable”. Selecting Programmable will make the vacuum follow the profile set in functions #7 to #12 when doing a temperature profile in **Local** mode from the control case.

15. Vacuum alarms

15	Vacuum Alarms		
>Alarms Enabled		Saved	
Sensor External #1		Saved	
High -10 kPa above s/p		Saved	
Low -10 kPa below s/p		Saved	

The vacuum alarm can be set to alarm at a level above and below the set point vacuum level. The set point vacuum level is set in setup function #14 when the pump mode has been set to ‘Automatic’ in the same function. The vacuum alarms can also be disabled.

Range 0 to -100 kPa, 0 to -29.2 InHg, 0 to -0.99 Atm

16. Zone output power control

16	Zone Output Control		
>Zone 1 Automatic		Saved	
Zone 2 Temperature		Saved	
Zone 3 Manual		Saved	

The 3 zones can be individually set to either automatically follow the PC program set temperature, or the local control case program temperature, or can be manually set to a fixed power level or a fixed temperature.

Set the manual level in the next function. See below.

This function will be skipped if all zones are set to ‘Automatic’.

17. Manually set zone power / temperature

```
17  Zone Output Control
-----
>Zone 2  Temp. 120 C      Saved
Zone 3   Power 50%       Saved
```

If any of the zones were set to Manual or Temperature in function #16, the level for that zone is done in this menu.

18. Start and stop function

```
18  Local Task Control
-----
Local Task currently IDLE
Press <Enter> to start
```

```
18  Local Task Control
-----
Local Task currently IDLE
To confirm press <Enter>
```

The screen is used to start or stop the local control of the temperature cycle, depending if the heat cycle is running or not. It is a double step process as there is a confirmation screen that follows the first screen.

Press the ENTER key to start the cycle or press SETUP to return to the run mode. The temperature cycle will start / stop. Press the SETUP key to return to the run mode.

The option will automatically return to “STOP” after the cycle has been started.

19. Set the PID values

```
19  PID Parameters
-----
>PB 95 Degrees      Saved
Ti 140 seconds      Saved
Td 3 seconds        Saved
```

The PID settings are used to change the way that the level of power is calculated for the heat blanket when the temperature is being controlled from the control case and not the PCB.

PB - Range 1 – 1,000 degrees

Ti - Range 0 – 1,000 seconds

0 will disable the integral action.

Td - Range 0 – 100 seconds

0 will disable the derivative action

20. Units selection

20	Display Units	
>Vacuum	kPa	Saved
Pressure	kPa	Saved
Temp.	Celsius	Saved

This will affect the way run time displays and menu items display the vacuum, pressure and temperature.

The options are –

Vacuum – kPa, atmospheres, Inches of mercury and bars

Pressure – kPa, PSI and bars

Temperature – Metric and imperial

21. External inputs

This function is used to match the vacuum inputs of the HBC-4301 to the range of the external transducers.

21	External Input Configuration	
>Type	Pressure	Saved
Minimum	-1 bar	Saved
Maximum	0 bar	Saved

It is possible to use a transducer with an input range anywhere within -1 bar to 10 bar, with a minimum of 1 bar. A transducer that has a range that covers vacuum only, pressure only or both vacuum and pressure can be used. The 'Type' option of 'Vacuum' or 'Pressure' will allow the correct selection of the displayed units in the RUN mode.

Set the **vacuum / pressure** tick box on the **Vacuum Pressure Setup** screen on the PC the same as it is selected in the control case.

14.5 Running a job from the control case

14.5.1 Introduction

The HBC-4301 was designed to be used with a notebook PC. However, the control case can be used to run a temperature profile *without* the PC with some limitations.

They are –

Function	Running from the control case	Running from the PC
<i>Zone control</i>	All zones running the same temperature profile	Zones can be set to independent temperature profiles. Zones control can be made to wait for slow zones.
<i>Number of running tasks</i>	1	2
<i>Adhesive temperature control</i>	Not available	Cure time based on the adhesive characteristics.
<i>Identification of the job</i>	Date / time only	Alpha / numeric entry of Item description Item number Operator name Date / time
<i>Monitoring the progress of the job</i>	Individual thermocouple	Graph showing temperature and vacuum trends. Map of the repair with colored temperature flags. Table of individual thermocouples.
<i>Storage of temperature data and the alarm log</i>	One job is saved in the control case and can be uploaded to the PC after the job is completed.	A ‘very large’ number of jobs are stored on the PC hard disk and can be recalled later.
<i>Recall of past jobs</i>	No recall available. The temperature data must be sent to the PC for storage and recall.	Trend graphs of temperature and vacuum are saved. Map of the repair is saved. Alarm and operator intervention log file is saved. Pictures and document files can be linked to the job file.

14.5.2 Configuring the temperature profile

Before a temperature cycle can be run the shape of the temperature and vacuum cycle must be defined. This is done by entering the –

- Temperature ramp rate
- Target temperature
- Hold time
- Vacuum level

```
07 Edit Heater Cycle Stage 1
>Ramp Rate 2.0 C/min Saved
Soak Temp 100 C Saved
Hold Time 30 minutes Saved
Vacuum Level -25 kPa Saved
```

This data can be entered for up to 6 stages of the temperature cycles. The values are entered into setup functions # 7 to # 12 in the control case.

These functions are enabled in function # 6.

The rate will be ramped up and down by the option keys and set by the enter key.

The ‘Saved’ will be used to show the locked status.

Range 0.0 to 10.0 °C/min or 20.0 °F/min (0 to disable the stage, and all following stages).

The temperature will be ramped up and down by the option keys and set by the enter key.

The ‘Saved’ will be used to show the locked status.

Range 0 to 300 °C or 800 °F.

The rate will be ramped up and down by the option keys and set by the enter key.

The ‘Saved’ will be used to show the locked status.

Range 0 to 240 minutes.

14.5.3 Starting and stopping the temperature profile

The cycle can be started once the temperature and the vacuum profile have been entered, and the thermocouples and the heaters have been connected.

Use setup function # 18

```
18 Local Task Control
Local Task currently IDLE
Press <Enter> to start
```

After pressing the **ENTER** key, the operator will be prompted to confirm the start. A second press of the **ENTER** key will start the cycle.

Stopping the cycle is done by using the same function # 18.

14.5.4 Data logging in the control case

When a cycle is run from the control case in Local mode, without a PC, the temperature and vacuum profile is saved in battery-backed memory. The data will be retained until another job is started, even if the power is turned off on the control case.

When a job is started the following data is saved –

- Date / time
- Control case serial number
- Thermocouple configuration
- Thermocouple type
- PID values
- Vacuum / pressure setup
- Temperature / vacuum profile
- Expected finish time

While the job is running the following data is saved –

- Control temperature for each zone
- Power level for each zone
- Acceptance temperature
- External vacuum / pressure input levels
- Internal vacuum

In addition to the above, all temperature alarms are also recorded with a date / time stamp.

This page has been left blank intentionally.

15. REVIEWING A PREVIOUS REPAIR

The Hot Bonding Controller program has the ability to save and recall jobs to and from a database storage system in both the PC and the control case.

While a task is running the PC saves the zone temperature data, vacuum data, repair map, data logs and process events to the hard disk. As a task is finished, these files are compressed and saved back to the hard disk. If a file is linked to a task after the repair has been finished (for example pictures of the finished repair) a linked file is also compressed and saved in the task record file. The size of a typical repair file will be about 10k without any linked files.

NOTE: The linked file itself is saved in the compressed file.
If this task file is exported it *will* include all other documents in the exported file.

A database of the compressed files is assembled and can be accessed through the **Control Functions Menu, Previous Jobs Database**.

15.1 The concept of a backup system

The database feature allows the record of the jobs to be kept on either a series of floppy disks or transferred to a larger computer for backup on a hard drive or Zip / tape backup system.

The backup to network system will consist of the following steps –

- Allow the computer to save each job as it finishes on both the hard disk and the backup floppy disks.
- Transfer the jobs at a regular interval (i.e. **every week**) to a network server that has backup facilities. Individual jobs can be transferred to a flash disk / floppy disk for temporary storage.

The computer saves the following information –

- Date / Time as the job is started
- Operator name
- Item description
- Part number
- Adhesive profile, if selected
- A **graph** containing the following –
 - Set point temperature profile
 - Hottest temperature of each zone
 - Thermocouple type
 - The coldest temperature of the repair
 - The vacuum profile
- All alarm reports
- All supervisor / operator changes and automatic interventions
- A **map** of the repair with thermocouple and zone positions
- Files that are linked to the repair such as **digital photographs**

15.2 Saving the current job when finished

As each repair is finished the computer will save a copy of the temperature and vacuum profile of the job, the map and the log / alarm file to the hard disk. There is no choice of this. Even if a repair is aborted immediately it will still be saved.

NOTE: A procedure should be implemented to make sure that past jobs are not lost. The completed job files should be exported to a safe place on a regular basis.

The only choice is that the printing of the temperature graph and the log / alarm file can be cancelled.

15.3 Retrieving a previous job

Any of the jobs previously run can be recalled by searching the database.

The search can be based on –

- Operator
- Adhesive
- Job part number
- Job description
- Date / time

Date	Time	Operator	Item Description	Item Number	Size
3/09/2003	13:09:34	Default	3sept03buttstrapstage3rdattempt	507f	10.82 kB
30/09/2003	15:28:21	Default	d	d	5.97 MB
1/10/2003	12:23:02	Default	d	d	5.80 kB
16/10/2003	08:57:33	Authentication Bypass	1 zone test 16-10-03 ser # 1003	4256456-w	5.04 kB
16/10/2003	14:02:02	Default	Test for zone 2 ser # 1003	2345345-w	5.41 kB
30/10/2003	14:59:28	Default	Test Blankets	234-03	4.57 kB
10/11/2003	15:28:16	Default	Test wing	34564-w	2.82 kB
10/11/2003	15:54:44	Default	Test wing #2 2 zone	12345-w	3.08 kB
10/11/2003	15:58:45	Default	Test zing 2 zone #2	34534-e	4.04 kB
11/11/2003	08:27:48	Default	2 tasks, 2 zone	32454-re	4.32 kB
11/11/2003	08:39:02	Default	2 task, 1 zone	345345-	3.17 kB
11/11/2003	10:03:12	Default	2 task 2 zone changed tc pattern	1234	3.87 kB
11/11/2003	14:20:10	Default	Take 2 of 2 zone test	23456435-	4.01 kB
11/11/2003	15:12:10	Default	Zone 3 task 2	1234543	3.10 kB
11/11/2003	16:52:39	Default	Take 3 task 2	2345-	2.93 kB
12/11/2003	09:53:09	Default	Test with a distorted FM73 2 zone	234564	1.02 MB
12/11/2003	13:36:02	Default	test extended soak time	r4r	9.37 kB
19/11/2003	13:29:09	Default	Test cycle for Ser #1004	1234-e	7.23 kB
19/11/2003	15:20:06	Default	Test cycle for Ser# 1005/2	234652345-e	5.76 kB
19/11/2003	16:52:43	Default	Test cycle for ser #1006 /2	23465-e	5.35 kB
20/11/2003	10:08:26	Default	test cycle ser# 1007	s	6.90 kB
21/11/2003	10:35:55	Default	Leading edge of RH rear stabiliser delamination	WS17634/RUT	3.95 kB
21/11/2003	12:26:51	Default	Leading edge of RH rear stabiliser delamination	WS17634/RUT	546.18 kB

Attached Files

File	Size
Specific Repair Procedure.doc	78.00 kB
Damage.jpg	700.00 kB
Primary Data.xls	21.50 kB

View Record View File Add File Remove File Delete Record Export Record Administrative Tasks Esc Return to Menu

Connected Disconnected 03/Feb/2006 11:50:08

Fig. 23 Review Previous Jobs Menu

The recalling of a repair will allow access to the temperature / vacuum information that was saved as the repair was finished as listed in figure 23. The hottest temperatures are graphed for each zone and the coldest temperature for the repair is also shown. Parts of interest in the graph can be expanded to show the detail as described in the chapter 9.2.1.

The map of the repair is recalled and can be re-examined as shown in figure 16.

Digital photographs of the repair can also be recalled.

15.4 Adding a Linked File to a previous job

Digital photographs and other file types can be linked to a repair history.

For example a photograph of the finished repair or a description of the surface preparation written in Microsoft™ Word can be linked to the repair.

From the **Review Previous Jobs** menu, select (highlight) the repair to which you want to link a file. Click the **Add Link** button at the bottom of the screen. When the **Open** dialog box opens up, use the Files of Type window to select the type of file you want to include in the repair (i.e. Picture, document, spreadsheet). Use the **Look In** window to find the file that you want to link to the repair. Click the file and then click **Open**.

When reviewing a previous repair, select the repair you want to recall. Any linked files will be listed in the lower panel of the screen. Double-click the link file to view them in an appropriate application program.

To view the temperature graph, repair map and the alarm and process log files, click the **View Record** button. The temperature graph of the repair will appear.

From this screen –

- The repair map can be viewed by clicking the **View Setup** button.
- The process log can be viewed by clicking the **View Log** button.

The number buttons on the bottom of the screen can be used to show / hide any of the zone graphs. The Accept and the Vacuum buttons will show / hide the acceptance thermocouple and vacuum graphs.

The Export button will allow the temperature graph to be saved as a text table so that it could be viewed in detail, graphed in an application program such as Excel or e-mailed.

At the bottom of these screens the Print button can be used to keep a hard copy of the temperature graph and the repair map. The process and alarm log file will be opened in WordPad™ and can be printed from this program.

15.5 Transferring a job file to another HBC-4301 computer

Repairs done using another HBC-4301 computer can be exported to another computer.

Each repair record is a compressed file that contains three separate files. These files are –

Config.txt	Graph of the temperature and vacuums
Log.txt	All alarm messages, warnings, operator changes and data reports
Repair.map	Repair map showing the physical layout of the repair

When the compressed file is transferred, the files are placed in date order in the list of previous jobs and can be viewed using the **Previous Jobs Database** menu.

The job can be exported by clicking the **Export Record** button on the bottom of the **Previous Jobs Database** screen (or pressing the “x” key). Select the folder that you want to save the job in. The file name can be changed before saving.

The exported job can be imported into another computer from the **Previous Jobs Database** menu by –

1. Clicking the **Administrative Tasks** button
2. Click the **Import Single Record** button on the dialog box that will appear after step 1

Leave the ticks in the first and the last tick boxes (**Prompt before Overwriting** and **Re-index Database Automatically**)

3. Select the folder and the record that you wish to import
4. Click the **Open** button
5. Click **Done** when the **Database Administrative Tasks** dialog box reappears

The file will be imported into the data base and can be viewed from the **Previous Jobs Database** menu.

16. TUNING THE CONTROLLER USING THE PID VALUES

16.1 Background

There are 3 considerations when the controller calculates the P, I and D values:

P is for PROPORTIONAL, measured in °C or °F (current display units)

I is for INTEGRAL, measured in seconds

D is for DERIVATIVE, measured in seconds

- P** The distance the repair temperature is from the set point temperature.
- I** The time the repair has been away from the set point temperature.
- D** The rate at which the repair temperature is varying compared to the set point temperature.

The term PID refers to the three values used to calculate -

The *power* required to get the *actual temperature* of the thermocouple equal to the *set point temperature*.

The power can be varied from zero volts to full mains voltage on the heater mat. The amount of power required has to be continuously assessed to get the temperature to the set point, or to maintain the temperature at the set point.

16.2 Changing the PID values

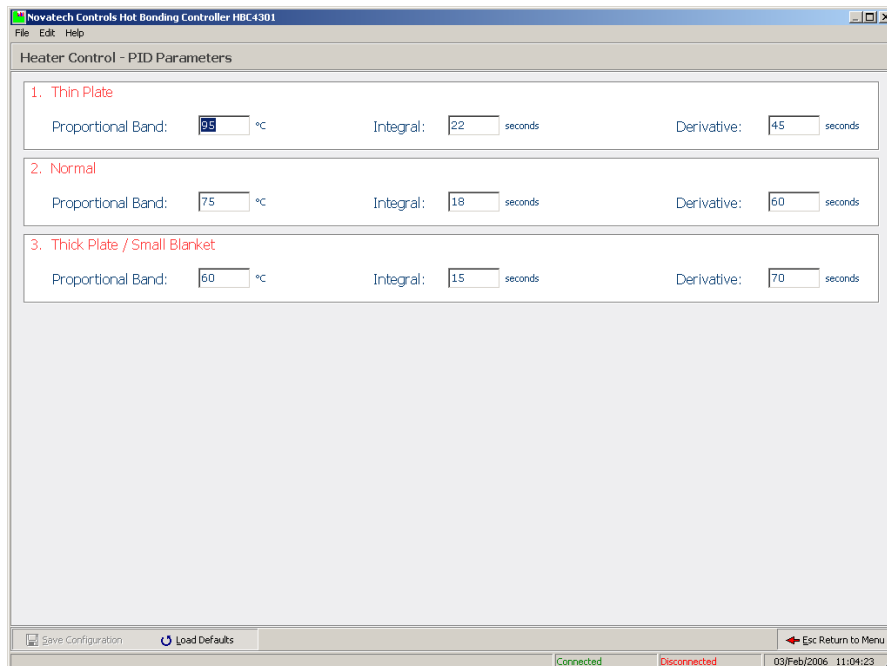


Fig. 24 PID parameters screen

NOTE:

Tuning a temperature controller takes time. Only change the values if you have no choice. If you do change the PID, keep careful notes of the values and the temperature reactions. Make sure you have waited long enough to let the system settle before taking the next action.

NOTE:

There is provision for 3 sets of PID values to be saved in the HBC-4301 program. Before you re-tune the controller, make sure the correct values are being used in the **Zone Control** section of the **Thermocouple and Zone Configuration** screen, and the **PID parameters** screen.

The PID values should not have to be changed. The values of –

	P	I	D	
Thin Plate	95	12	1	0.6mm aluminium plate
Normal Plate	75	18	1	2mm aluminium plate
Thick Plate	60	25	1	6mm aluminium plate

- have been found to control the temperature of the heaters within +/- 2°C of the set point.

16.3 Proportional Value

This is the most important term. The other two actions (I & D) could be turned off (a value of 0 will disable either I & D), and proportional action alone could control the temperature quite well. It sets the output proportional to the deviation of temperature above and below the set point. When the actual temperature is within this band, the controller will select a power level between off and full on.

The **larger** the number, the **smaller** the proportional effect.

Proportional action cannot be turned off.

P VALUE TOO SMALL

If the P value is too small, the controller will provide greater power variation for a small temperature variation. This will lead to instability in the patch temperature, and there will be a slow oscillation of the temperature over a few minutes. Increase the “P” value, and test the stability again.

P VALUE TOO LARGE

If the P value is too large, the temperature will not follow the ramps closely, and will not reach the soak temperatures. Decrease the “P” value, and test the control again.

16.4 Integral Value

This value is used to stop the temperature from settling just off the set point.

The **larger** the number, the **smaller** the integral effect.

A “0” will turn all integral action off. “1” is the largest or fastest action.

I VALUE TOO SMALL

The actual temperature will oscillate above and below the set point (slower than the proportional oscillation).

Increase the “I” value by 50% of the current value. If this does not reduce the oscillation of the temperature, set the PID values to the default values.

I VALUE TOO LARGE

The actual temperature will settle usually below the set point on a soak stage.

Halve the “I” value and let the controller settle down again for 15 minutes.

16.5 Derivative Value

This value is used to fine tune control. It modifies the power out in response to the rate at which the actual temperature is approaching the set point.

i.e. When the set point gets to the top of a ramp, but the power out is still set high, expecting a continuing ramp up. The D value will help stop over shooting of the soak temperature.

The **larger** the number, the **larger** the derivative effect.

A 0 will turn all derivative action off.

D VALUE TOO SMALL

The actual temperature will approach the soak temperature too slowly.

Before changing the “D” value, make sure you have a big enough blanket to heat the patch at the required rate.

Increase the “D” value by 20% of the current value.

D VALUE TOO LARGE

The temperature will be too slow to reach set point. Reduce the “D” value by 20% of the current value. If this does not produce smooth temperature control then set the PID values to the default values.

16.6 Tuning the PID values

The easiest way to get started on a repair is to use the default values that are set in the program and are shown in the table above (Chapter 16.2, Changing the PID Values). This requires that the job be assessed as Thin, Normal or Thick. The description of these jobs is also shown in chapter 16.2.

A more conservative approach, until more experience is gained with a new job, is to use proportion control only. This means turning off the integral and the derivative parts of the PID and setting the Proportional factor wide.

Set the following –

Proportional Band	60
Integral	0
Derivative	0

The result will be that the temperature of the zone will follow the set point smoothly but will be 5 to 10°C below the set point.

Introducing some integral action will bring the temperature much closer to the set point. Start with the following but increase the integral to 100 if cycling starts -

Proportional Band	60
Integral	50
Derivative	0

This will usually result in the temperature following the set point within 1 to 2°C.

To further improve the response to a sudden change in the set point such as when the ramp temperature reaches the soak temperature, a small derivative could be added. Try starting with –

Proportional Band	60
Integral	50
Derivative	4

This page has been left blank intentionally.

17.1 A zone does not heat up

Solutions:-

1. One of the circuit breakers has not been turned on.
2. The zone has not been enabled on the **Thermocouple and Zone Configuration** screen.
3. The zone power **auto / manual** selection is not set to Auto in the control case Setup mode.
4. If the power output lamp is on, the blanket is probably faulty.
5. The heater is plugged into the wrong power outlet socket.
6. One of the thermocouples configured for that zone in the **Thermocouple and Zone Configuration** screen is actually in another zone.

17.2 A zone heats above the set point temperature

Solutions:-

1. The **auto / manual** selection is not set to Auto in the control case Setup mode.
2. One of the thermocouples configured for that zone in the **Thermocouple and Zone Configuration** screen is in another zone.
3. The PID control values are not set correctly. See Chapter 16, **Tuning the Controller Using the PID Values**.

17.3 The computer keeps 'Beeping'

Solutions:-

1. The **computer** communications cable is not connected to the computer.
2. The power is not on at the control case. Check the green power LED on the power supply inside the control case, and the fuse in the power supply.

17.4 There are too many 'temperature too high / low alarms'

Solutions:-

1. Thermocouples and zones are configured incorrectly in the **Thermocouple and Zone Configuration** screen.
2. The incorrect PID number has been selected in the PID field of the **zone control** section in the **Thermocouple and Zone Configuration** screen.

17.5 The screen of the PC goes blank

Solutions:-

1. The PC battery has gone flat and the computer has gone into stand-by mode. Check the power and power pack leads.
2. The temperature / vacuum profile and process log / alarms will be saved and the job can be re-started.

17.6 The temperature does not control to the set point

Solutions:-

1. Check that the correct PID group is being used in the **Zone Control** section of the **Thermocouple and Zone Configuration** screen.
2. Change the PID values back to the default values of -

P	95
I	12
D	1
3. Re-tune the controller PID values. See chapter 16, **Tuning the Controller Using the PID Values**.

17.7 A temperature is reading “o/c”

Solutions:-

1. The thermocouple may be open circuit or have a broken or loose connection in the thermocouple plug.

17.8 The temperature in one zone goes high while the other zone goes low

The heaters and thermocouples may be in opposite zones.

Solutions:-

1. Check that the heaters are connected to the correct zone.
2. If this occurs, an alarm (Excessive Zone Temperature) will be active and heaters will be cut off automatically. They will be re-enabled if the **Cancel CRITICAL Temperature Alarm** button on the **Process Log** screens is pressed. The button can only be accessed by a Manager or a Supervisor.

17.9 There is a “Heater Fail” alarm

The heater has been running at 100% power level for more than one minute.

Solutions:-

1. Check which heater is nominated in the alarm. Make sure that it is connected to the correct zone.
2. Consider providing a secondary heat source for the area.

17.10 The vacuum fluctuates too much in automatic control mode

The control case is set to control the vacuum, but it moves above and below the set point.

Solutions:-

1. Reduce the air supply pressure if a low vacuum (-40 to -60kPa) is required.
2. Consider using the vacuum pump in manual mode.

17.11 There is a “Thermocouple x Critically High” alarm

The temperature of a valid thermocouple is $>20^{\circ}\text{C}$ over the set point (for set points up to 130°C) or $>10^{\circ}\text{C}$ over the set point (for set points over 130°C).

Solutions:-

1. Check the solutions suggested in section 17.8 above.
2. A heater output control circuit has failed. Use another output if possible and have the HBC-4301 serviced.

17.12 The PC will not connect to the HBC-4301 when using a USB adapter

The USB adapter may not have been plugged into the PC when the HBC-4301 software was started, or the USB adapter may have been unplugged while the software was running.

Solution:-

Close the HBC-4301 program, turn off the PC and then turn it back on and restart the HBC-4301 software. The PC will reinitialise the USB port.

See also chapter 18.3, **Installation and Setup of the USB Software**

18. MAINTENANCE

The accuracy of the Hot Bonding Controller is dependent on the electronics built into the control case. The electronics was designed to need very little maintenance or calibration. This has been achieved by the use of extremely stable voltage references, which are used in a continuous self-calibrating process, as well as built in self-checking processes. This is all scheduled and controlled by an internal microcomputer.

However for safety, the control box should be thoroughly checked by trained and competent personnel every year.

The annual check and calibration should include –

- Calibration of the thermocouple inputs.
- Calibration of the vacuum and pressure measuring electronics.
- Calibration of the external vacuum sensors.
- Checking of the zone power outputs.
- Operational check of the earth leakage detector.
- Physical and electrical check of the sockets and cables.

The software in the HBC-4301 control case includes a restricted access calibration function. The entire calibration procedure is carried out from the keypad of the HBC-4301 control case. The calibration factors are stored in permanent memory in the control case. There are no potentiometer adjustments. Instructions for the calibration procedure are contained in a separate instruction manual. This manual is supplied with the HBC-4301 control case but should be kept separate from the HCB-4301 to ensure unauthorised personnel do not change the calibration settings.

When the calibration check / adjustment is required, and a suitably trained organisation is not available, contact –

Novatech Controls Pty Ltd

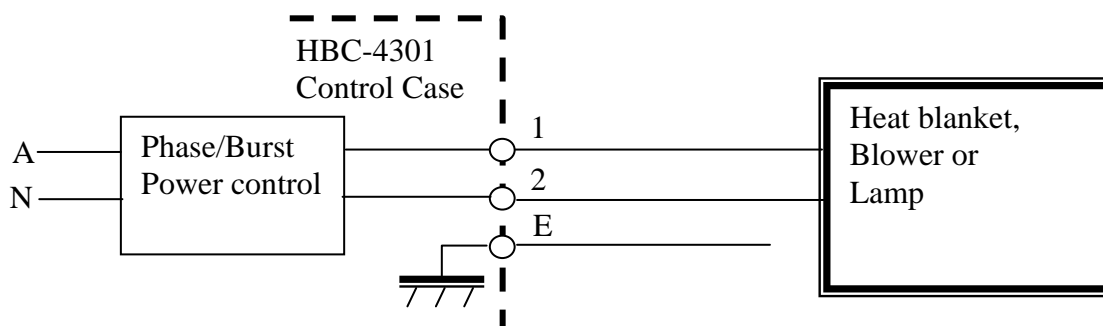
Tel +61 3 9585 2833

Fax +61 3 9585 2844

www.novatech.com.au

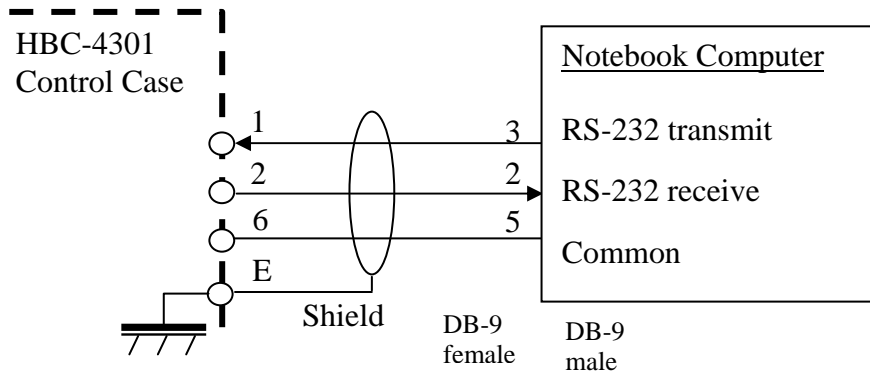
18.1 External Wiring

Heater outputs

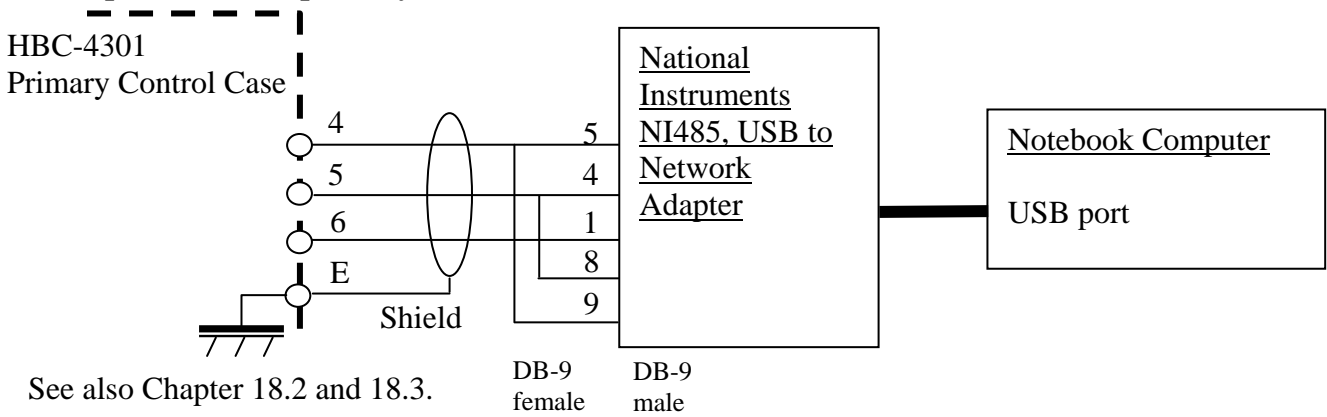


Serial communications

(Computer, RS232)

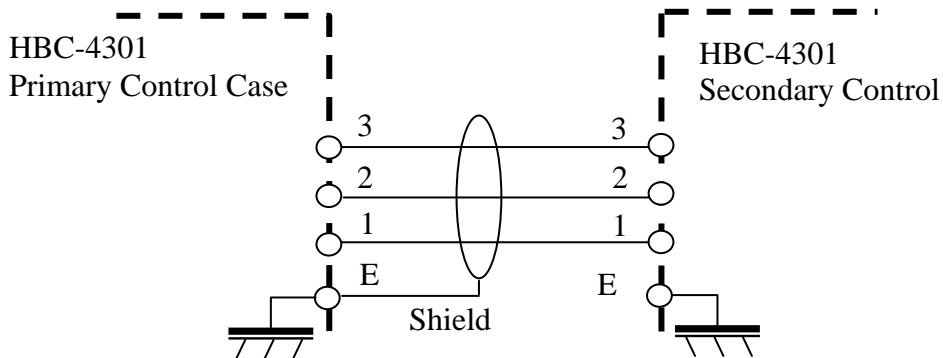


(Computer, USB to primary case)



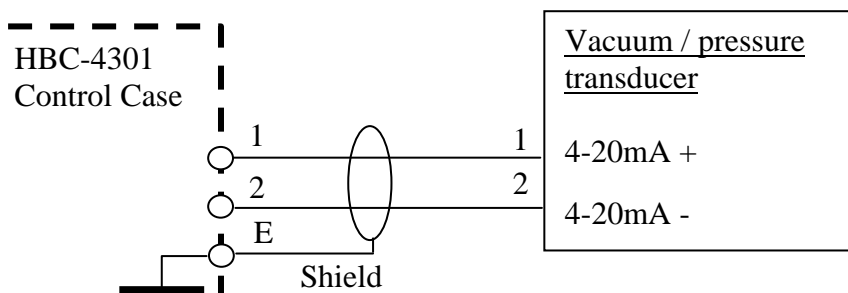
See also Chapter 18.2 and 18.3.

(Network primary case to secondary case)

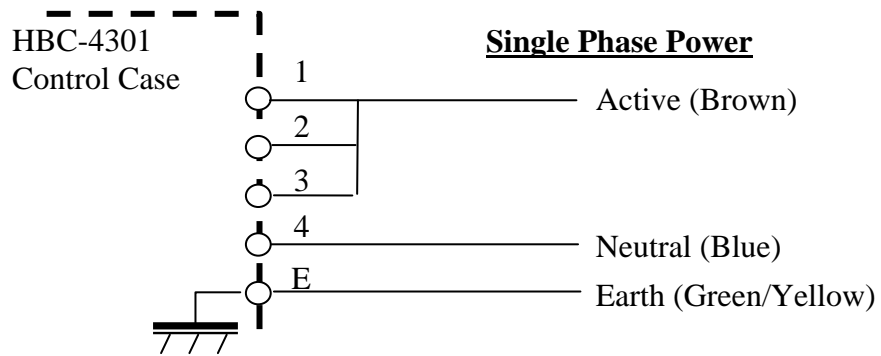
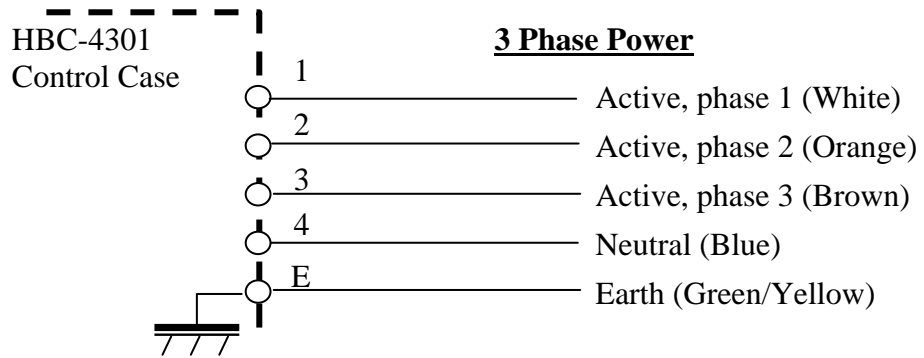


Vacuum transducers

(Vacuum 1, Vacuum 2)



Mains power



Note:

The cable colours may not always be the same as shown here

18.2 Changing from RS232 (serial port) to RS485 (USB port)

Introduction

The HBC-4301 was designed to be controlled by a notebook PC. The PC could be supplied with different serial communications. Traditionally a notebook PC was supplied with one RS232 serial port, but more commonly they are now supplied with only USB ports.

To overcome the lack of serial ports, often a USB to RS232 serial port adapter is supplied. Unfortunately these adapters do not fully support the control lines in the serial port and therefore cannot be used to control the HBC-4301.

The HBC-4301 has been designed to accommodate this situation by providing two communication standards – RS232 and RS485.

Set the HBC-4301 to RS232 mode if –

- The controlling computer has an RS232 serial port (9 pin ‘D’ connector) and the HBC-4301 is only to be used as a standalone hot bonder (not networked with another HBC-4301 to achieve 6 / 32 zones / thermocouples).

Set the HBC-4301 to RS485 mode if –

- The controlling computer does not have an RS232 port but has a USB port.
- The HBC-4301 is to be used as one of a networked pair to achieve 6 zones and 32 thermocouples.

Changing the HBC-4301 RS232/RS485 mode

It is necessary to set the HBC-4301 to RS-485 mode if a USB port on the PC is being used. This is done with a selection in the calibration setup menu.

1. Turn the HBC-4301 power off
2. Press the SETUP key and hold it while the power is turned back on
3. Hold the key pressed until the words “Calibration Menu Enabled” appear on the display
4. Wait for the hot bonder to go through the initialisation procedure
5. Press and hold the setup key. Initially the normal setup menu will be shown, but if the key is held down for 2 seconds the extended setup menu will be shown
6. Use the function keys to find the function #10, Serial Interface
7. Use the option keys to select “RS-485 2-wire”
8. Press the Enter key to save the selection
9. Press the SETUP key to return to the RUN mode

NOTE: The Novatech Controls communications cable used for RS232 is different to the cable used for RS485.

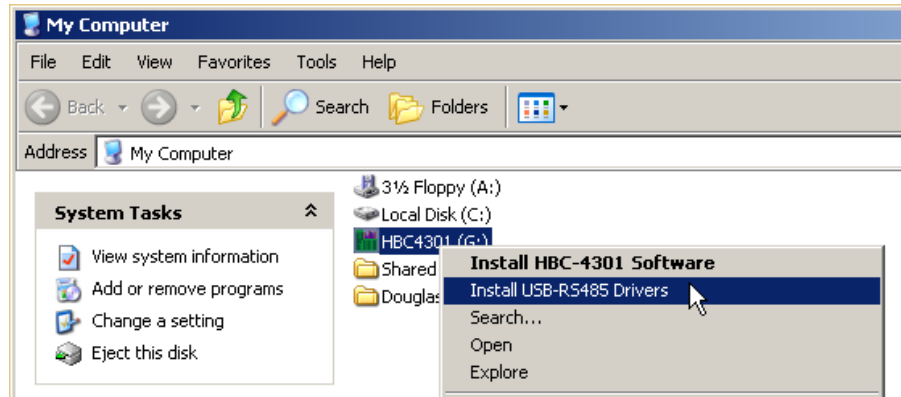
Networking 2 HBC-4301 hot bonders

When networking two HBC-4301s together, the selection on both hot bonders must be set to the RS485. Novatech Controls can supply the additional cable to connect between the two hot bonders.

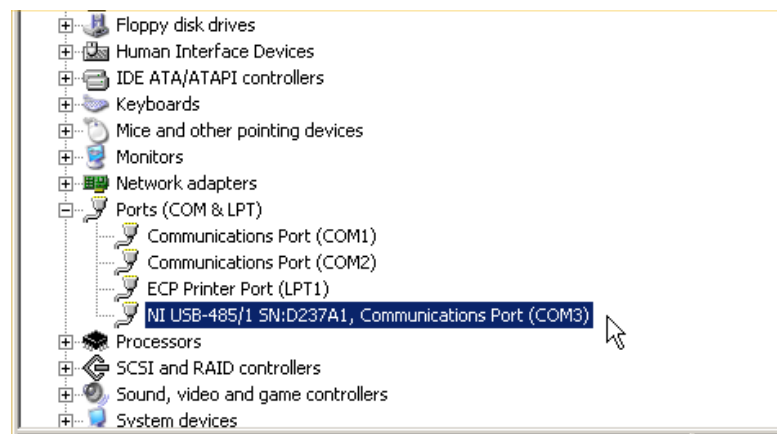
The cable to the first hot bonder must be an RS485 cable and it will come from a USB adapter.

18.3 Installation & Setup of the USB Software

1. If connected, disconnect the USB adapter from your computer.
2. Locate the Novatech Controls HBC4301 Installer CD, insert into CD drive
3. Press Cancel and exit the HBC-4301 autorun installer
4. Open 'My Computer' by double clicking the icon. Right click the CD Icon labelled 'HBC4301' and select 'Install USB-RS485 Drivers'



5. Follow the prompts. You may be asked to restart the computer
6. Reconnect the USB adapter. Windows will now automatically detect the adapter and install the driver.
7. From the Start menu
 - Click on 'Control Panel'
 - Open the 'System' control panel
 - Select the 'Hardware' tab along the top of the window
 - Click the button labelled 'Device Manager'
8. Locate and click to expand the item in the list named 'Ports (COM & LPT)'



9. Make a note of the COM port number at the end of the line (COM3 in this example)

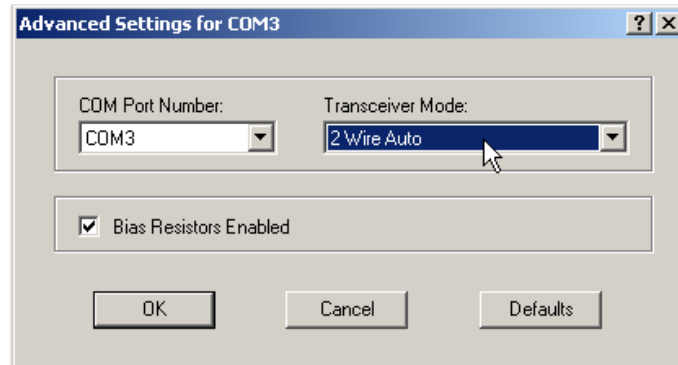
10. Double click the entry in the list labelled NI USB-485 to bring up the properties screen

Select the 'Port Settings' tab along the top of the window

Click the button labelled 'Advanced...'

Set the 'transceiver mode' to '2 wire auto'

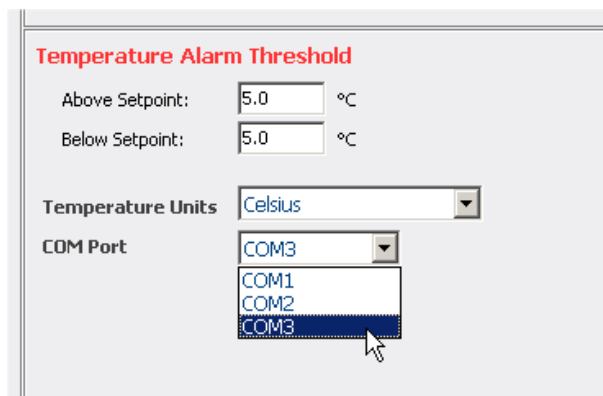
Close all the windows, clicking the 'OK' buttons to save changes



11. Go back to the desktop and launch the Novatech Controls HBC-4301 program

12. From the main menu select the **Control Functions Menu** (F8) and the **Thermocouple and Zone Parameters** (F1)

13. Change the COM port box to select the port noted down in step 9 above



14. Close the program, saving changes when prompted.

15. Next time you start the HBC-4301 program, make sure that the USB adapter is already plugged into the computer. The port will be properly configured and connect automatically.

19. ASSEMBLY AND BAGGING

NOTE: This manual does not claim to have sufficient information to prepare and bond a patch. It must only be used as reference manual for the HBC-4301 Hot Bonding Controller. For complete information on the bond process, please refer to the adhesive manufacturer, or the Training Notes.

Before the heater blankets, thermocouples and release films can be assembled, the physical damage must be repaired, and the surface preparation must be carefully done.

Surface Preparation comprises:-

Cleaning the Surface

Exposing Fresh Material

Chemically Modifying the Metal Surface

Before starting the assembly stage, the HBC-4301 controller and accessory equipment supplied with the controller should be checked to make sure it is complete and in operational condition. Heater blankets in particular should be checked for sharp creases in the pad or bared wires in the lead. Also check the blanket power extension leads and the thermocouples for frayed or damaged leads.

The actual bagging sequence involves the positioning of the heater blanket and thermocouple wires in the correct positions, the proper placement of bleeder cloths, breather cloths and release films, as well as the vacuum sealant tape, bagging film and vacuum sniffer ports.

19.1 Thermocouples

The thermocouple placement is extremely important to a successful bond. The HBC-4301 has provision for 16 thermocouples, which can be expanded to 32 if required.

The HBC-4301 also allows for up to 3 heaters, again expandable to 6 for large repairs. If the area to be bonded spans sections with different thermal loading, more than one heater may be required.

i.e. The patch may go from honeycomb core to a structural member.

Determine how many heaters will be used, and where they will be placed. Between 3 and 6 thermocouples must be placed under each heater.

Place the thermocouples in positions that will show the extremes of temperature. Put some of the thermocouples in the centre area of the heater and others around the perimeter. The hottest thermocouple will automatically be selected to control the temperature to the set point, and the coldest thermocouple will be monitored to allow an extended soak to be calculated.

19.2 Release Film

During the cure cycle the adhesive will expand and melt. As it melts it flows. In order to prevent the adhesive from bonding to other elements of the lay-up, a release film is placed over the repair area and the thermocouples, overlapping the repair by about 50 mm. The film is usually made of Teflon and is capable of withstanding the temperatures of the heater blankets.

When the cycle is complete, the release film allows the bagging materials to be removed easily without them bonding to the repaired area.

19.3 Heater Blankets

The HBC-4301 has provision for between 3 and 6 heater blankets. Choose a heater blanket close to the size of the patch. If the patch has any heat-sink areas such as an attachment point, choose heater blankets to match the shape of the heat load. The HBC-4301 will individually control the blankets to maintain the required temperatures.

The heat blanket is assembled straight over the release film to enable good thermal coupling to the repair.

19.4 Breather Cloth

Breather cloth is used to maintain an even vacuum over the whole patch area without 'close-off'. It is capable of withstanding pressures of up to 700 kPa.

There are different grades of cloth available designed for particular applications such as thin cloths for tight corners and small radii.

The cloth should extend past the edge of the repair by 100-150 mm if possible, so that the vacuum ports can sit over the cloth without any risk of them sitting on the heater blanket.

19.5 Vacuum Ports

There are usually two bleeder ports (or sniffer ports) installed through the vacuum bag film. The port comes in several parts. The base plate is placed on top of the breather cloth, under the vacuum bag film. The rubber seal and upper section is attached to the base plate after the vacuum bag has been stuck down with the vacuum bag sealant, by cutting a slot in the vacuum bag film long enough for the key tags to go through the film. The upper section is pushed through into the base plate and twisted to lock the parts together.

The valve section that is screwed to the upper section has a non-return valve. This allows the vacuum supply or the vacuum gauges to be disconnected from the lay-up without the vacuum being lost.

19.6 Bleeder Cloth

The bleeder cloth is used for absorbing excess resin from the repair.

For repairs that use film adhesives there is usually no need to absorb adhesives.

When 'pre-preg' materials or wet lay-up materials are specified, excess resin has to be removed to provide the correct fibre / resin ratio. The number of thicknesses, or plies, of the bleeder cloth that are used regulates the amount of resin that is absorbed. If there is too much absorption, the repair will be resin dry, and if not enough, the repair will be resin rich.

It is most important that both of these situations are avoided by using the correct amount of bleeder cloth.

19.7 Vacuum Bag Sealant

Vacuum bag sealant is used to provide an air lock between the inside of the vacuum bag and the atmosphere.

The sealant tape is laid down along the outer edges of the repair area, and encloses the entire lay-up and bagging-up materials. The sealant tape should be capable of withstanding the high temperatures of the cure cycle, and is easily removed from the panel when the repair is finished.

Sealant tape should never be re-used.

19.8 Vacuum Bag Film

The final part of the bagging-up procedure is the application of the bagging film. The film is very thin and conforms easily to the shapes that may exist in some repairs. Once the air has been removed from the bag, and the vacuum is created, a leak test must be performed as follows -

1. Connect a vacuum pipe to one of the vacuum outlets on the control panel.
2. Make sure the vacuum transducer is connected to the other end of the vacuum pipe.
3. Test the ultimate vacuum by turning on the vacuum with the **VAC ON** button on the HBC-4301 control case or from the PC.
4. Note the vacuum obtained on the **Status all Thermocouples** screen for the **Internal Vacuum Sensor**. The vacuum will be about -70kPa with a supply line air pressure of 400kPa. Turn the vacuum off.
5. Connect one of the vacuum inlets onto one of the vacuum ports on the vacuum bag.
6. Connect the vacuum gauge to the other vacuum port.
7. Turn on the vacuum with the **VAC ON** button on the HBC-4301 control case or from the PC.
8. Work the vacuum bag sealant and the vacuum port seals until no air leaks can be heard, and the vacuum pressure on the computer screen shows the value obtained in step 4.
9. Hold the vacuum for several minutes.
10. Disconnect the vacuum pipe from the control panel.
11. Watch the vacuum reading for the **External Sensor** on the computer, and monitor the leak rate.
12. If the vacuum falls by more than 7kPa per minute it is not acceptable.
13. Re-work the vacuum bag sealant and the vacuum ports until the vacuum falls by less than 7kPa per minute.

There are two major functions that contribute to the successful repair of a bonded panel.

1. The vacuum allows the atmosphere to exert pressure to keep all the components of the patch evenly pressed together until the adhesive has cured.
2. The removal of chemicals that retard the curing rate, from within the adhesive. These vapours, referred to as 'volatiles', if not drawn out of the adhesive during the cure cycle, will cause porosity, which greatly reduces the strength of the joint.

This page has been left blank intentionally.

20. MANUFACTURE OF THE THERMOCOUPLE

One of the most critical components in the bonding process is the thermocouple. If the two wires that make the thermocouple joint are not joined precisely, significant errors in the measurement of the temperature can occur.

The best way to create a thermocouple junction is to weld the two wires. This is best done using a TIG welder; do not use oxy / acetylene as the acetylene will pollute the thermocouple junction. If a TIG welder is unavailable then an oxy / propane mixture can be used but the junction will be inferior to a TIG welded junction.

The picture below shows how the two wires are positioned so that the conductors are pushing against each other and how the junction should look after the weld. The wires should not be twisted together nor should the junction look like a “blob” of metal.

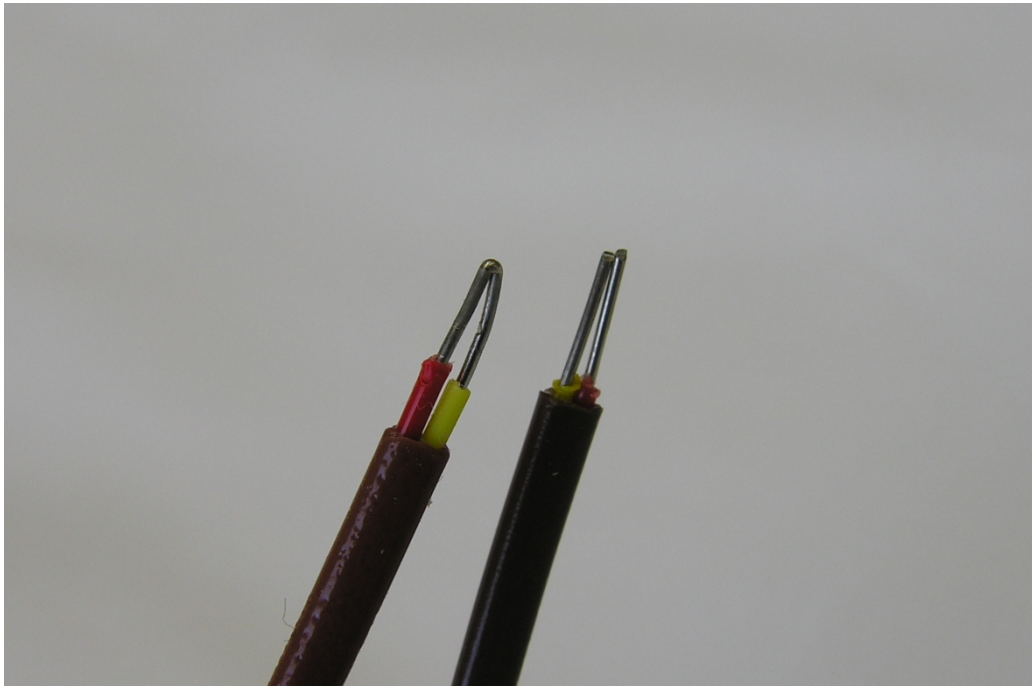


Fig. 25 The lead on the right shows how the wires should be positioned prior to the welding process. The lead on the left shows a correctly welded junction.

This page has been left blank intentionally.

21.1 Hardware expansion

Connecting an additional HBC-4301 as a slave unit will expand the inputs and outputs of the Hot Bonder. The program on the PC will recognise the presence of the additional HBC-4301 and enable the additional 3 zones and 16 thermocouple inputs.

The computer communications lead must still be connected to the HBC-4301 master case using the **Computer** connector. There must also be an additional network lead from either of the **Network** connector on the master HBC-4301 to a **Network** connector on the slave HBC-4301.

When the additional HBC-4301 slave unit has been detected, it will be possible to use the **Thermocouple and Zone Parameters** screen to configure the zones 4 to 6 and the thermocouples 17 to 32.

Other hardware expansion cases such as a 16-thermocouple only expansion case will become available in the future.

21.2 Bonding accessories

Accessories case

The accessory case has been designed to carry all the items required with the HBC-4301 control case. The case is 710 x 455 x 250mm and has wheels and a fold away handle for easy handling by one person.

The standard configuration of the control case includes –

- 20 high quality silicon heater blankets of 10 different sizes, a 1m lead and connector

75x150 mm
50x300 mm
150x150 mm
50x450 mm
200x 200 mm
150x300 mm
200x300 mm
300x300 mm
300x450 mm
450x450 mm

- 2 vacuum hoses, 5m long, fitted with a quick connect coupling, vacuum transducer, bag entry port and a bleed tap.
- Hand held thermocouple thermometer
- 2 External vacuum sniffer type 30 gauge with a bag entry port
- 5m 3-phase power lead
- 16 type 'K' thermocouples, 24 gauge, 5m long with mini thermocouple plugs
- 3 heater extension cables, 5m long

Other configurations are also available, and the blanket quantity and sizes can be tailored to meet individual needs.

This page has been left blank intentionally.

22. OPERATORS AND PASSWORDS

Introduction

When the program is first installed a default user and password can be used to gain access to all parts of the program with Manager authority. If security is an issue, the default user should be removed and a new user installed.

The initial default access is gained by using –

Operator = Default
Password = password

The HBC-4301 has a protection structure built into the program. There are three levels of authority within the structure. The level determines the parts of the program that will be available.

Password protection...	Operator	Supervisor	Manager
Create users at all levels of authority			*
Delete or disable accounts			*
Create or modify the adhesive files			*
View and edit the adhesive characteristic screen			*
View the adhesive characteristic screen	*	*	*
Access to the Operators and Passwords screen		*	*
Create users at the operator level of authority		*	*
Create or modify the temperature profiles		*	*
Change a zone temperature profile while a task is in Progress		*	*
Access to the data base of previous jobs		*	*
Access to the vacuum control setup screen		*	*
Operational parts of the program	*	*	*
Change tasks	*	*	*

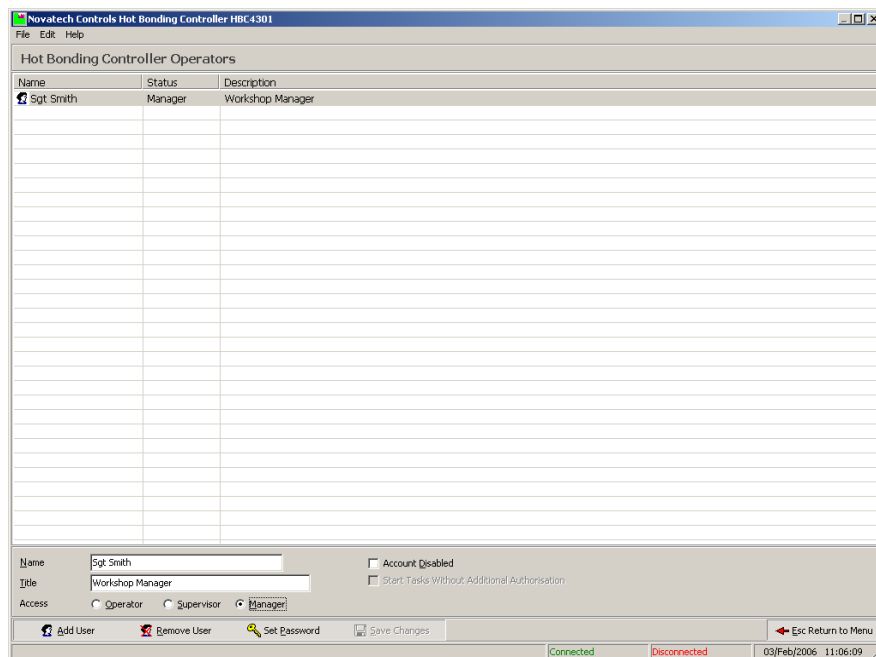


Fig. 26 Password protection screen

Creating a new User

Using the above screen, a Manager has the ability to –

- Create new users
- Select the authority level
- Disable accounts
- Change passwords

To add a new user, click the **Add User** button at the bottom of the screen (or press Alt A). The Create New User dialog box will appear.

Enter the –

- User name
- User description
- Select access level
- Enter the password and password confirmation.

The password can be between 6 and 32 characters long and can contain any numbers, letters or punctuation.

If additional authority is required after a user has logged on, to gain access to a screen that the operator may not have access to, temporary access may be obtained by logging on a new Supervisor / Manager.

Use the **Supervisor Login...** under the **File** menu heading in the top left hand corner of the screen. Use the start up user name / password dialog box as used when starting the program. All changes in the operator are logged in the process log screen if a temperature profile is running.

To return to the original operator, click the **Logout** button in the top left hand corner of the screen.

23. GLOSSARY OF TERMS

Cycle

The recipe for the temperature profile is called the cycle. The cycle includes six stages. Each stage has a ramp and a soak stage.

Guaranteed Soak

If the actual temperature is not within the “Dev” temperature set in the **Temperature Profiles** screen (default setting is 5°C) of set point at any time during a soak stage, the soak time will frozen. This can cause the total cycle time to be extended beyond the calculated time by a few minutes, but guarantees that the zone will have the required time at the curing temperature.

Map (Repair Map)

The control program has the ability to draw, save and recall a map of the repair layout. See chapter 9.3, **Monitoring the Operation, Repair Map**.

Passwords

The passwords control access to some of the more sensitive parts of the program. See chapter 22, **Operators and Passwords**.

PID

The P, I and D (Proportional, Integral and Derivative) values are used to allow tuning of the HBC-4301 temperature controller. See chapter 16, **Tuning the Controller Using the PID values**.

Ramp Rate

A temperature cycle is made up of temperature ramps and temperature hold times. The ramp rate is entered in degrees per minute. See chapter 6, **Creating a Temperature Profile**.

Soak Time

A temperature cycle is made up of temperature ramps and temperature hold times. The soak time is entered in minutes. See chapter 6, **Creating a Temperature Profile**.

Stage

The temperature cycle is broken up into 6 stages. Each stage has a ramp and a soak stage.

Zone

Each of the three heater power outputs provides a zone of control. Each zone is controlled individually, based on the thermocouples within the area of that heater blanket. There are three zones available with the HBC-4301 but an additional three zones can be added. (see chapter 21.2, **Bonding Accessories**)

This page has been left blank intentionally.

A		O	
Accessories case	95	Operators.....	97
Adhesive Control.....	55		
Alarm List.....	50	P	
Alarm- Temp Threshold	24	Passwords.....	97
Alarms	49	Periodic log Setup	52
		PID Control	77
B		Please Check Graph for Potential Errors	56
Backup Operation.....	57	Primary Not Connected.....	35
		Process Log	49, 50
C		Progression Control	24
Changing a Running Temp Profile.....	47		
Close the Program	53	R	
Connections		Repair map - Monitoring	45, 46
Communications.....	84	Repair Map - Set up	22
External transducers	84	Run Mode.....	57
Heater outputs.....	83	Running from the control case.....	69
Mains power	85		
Secondary case	84	S	
Controlling the Vacuum Pumps	29	Set up Mode	57
Critical Temperature Alarm.....	49	Specifications - Hardware	11
		Specifications - Software	12
E		Start Cycle Screen.....	34
Exit Program.....	53	Starting and Stopping.....	33
Extended Set up Mode.....	57	Status all Thermocouples	41
G		T	
Getting Going Fast	7	Temperature cycle -Creating.....	27
Glossary	99	Thermocouple Configuration.....	23
Graph	42	Thermocouple Table	23
Graph - Navigating	42	Two control cases	39
Guaranteed Soak.....	24		
		U	
H		USB connection	84
Hardware expansion	95	USB stops communicating.....	82
I		V	
Installing the Software.....	15	Vacuum	25
		Vacuum Alarms	31
L		Vacuum Pump - Control	30
Local mode	35	Vacuum Pump #1.....	29
		Vacuum Pump #2.....	29
M		Vacuum Pumps	29
Menu - Control functions	19		
Menu - Main	18	Z	
		Zone not ready	35

Declaration of Conformity

Application of Council Directive: 89/336/EEC (92/31/EEC)
Standards to which conformity is declared: EN61000-6-1: 2001
IEC61000-4-2: 2001
IEC61000-4-3: 2002
IEC61000-4-4: 1995
IEC61000-4-5: 1995
IEC61000-4-6: 1996
IEC61000-4-8: 1993
IEC61000-4-11: 1994
EN61000-6-3: 2001
CISPR 22: 2002
IEC61000-3-2: 2001
IEC61000-3-3: 2002
IEC-68-2-2
IEC-68-2-3
AS1099.2.6

Manufacturer's name: Novatech Controls Pty Ltd
Manufacturer's address: 309 Reserve Road
Cheltenham VIC 3192
AUSTRALIA

Importer's Name: _____
Importer's address: _____

Type of equipment: Hot Bonding Controller
Equipment Class: ISM, Group 1, Class B
Model Number: HBC-4301

Serial Number: 1012 Year of manufacture: 2003

I, the undersigned, hereby declare that the specified above conforms to the above directive(s) and standards(s).

Place: Melbourne

Signature:



Date: December 9, 2003

Full Name: Terry Brereton
Position: General Manager