



## INSTALLATION INSTRUCTIONS

### 1. Open Carton and Inspect Parts

Installation Parts included – refer installation diagram.

ITEM NO.	DESCRIPTION
1	K-AU1000 Head Assembly with mounting bracket
2	C-AU1000 Quick Change Filter Cartridge
3	Connection fitting to cold water cistern tap
4	Isolation valve
5	Pressure Limiting Valve
6	Quick Connect ¼" Elbow fittings
7	Quick Connect Tap Adaptor
8	Quick Connect Locking Clips
9	Tubing ¼"
10	Mounting Screws
11	Filter Monitor Alarm

### 2. ENSURE THAT THE COLD WATER IS TURNED OFF

- Under the kitchen sink locate the cold water isolation tap/valve.
- Turn the cold water off (check at main kitchen tap that water is fully turned off – if not, turn off at mains supply).
- Unscrew the braided flex hose from the existing cold water isolation tap/valve.
- Clean the ½" male bsp water connection thread.

### 3. Under-sink Mounting Position for Head Assembly

- Remove the Head Assembly (1) and Filter Cartridge (2) from the carton.
- Insert cartridge into head assembly and lock / twist until tight.
- Find a suitable location for the filter head and cartridge on the back or side wall of the under-sink kitchen cupboard – mark this location. Don't forget to allow at least 50 mm underneath the bottom of the filter cartridge to allow for filter replacement. Please ensure that

the location of the filter system is close to the cold water connection and below where the filter tap will be placed.

- Make sure that there is adequate space to avoid crimping the water line plastic tubing.
- ### 4. Connect Fittings to Cold Water Cistern Tap (item 3 & 4)
- Apply plumbing tape to the existing ½" male bsp water connection cistern tap fitting before screwing on the connection fitting (3).
  - Also apply plumbing tape to the ½" male bsp connection on the outlet of the connection fitting (3). Wrap tape in direction of the threads to ensure a tight fit and avoid leaks.
  - Re-Connect the ½" female bsp end of the existing cold water hose to the ½" male bsp end of the connection fitting.
  - Take isolation valve (item 4) and wrap plumbing tape around male bsp end. Screw into connection fitting (item 3) ensuring that the connection is sealed and tight.

### 5. Inlet/Outlet Connection fittings

- Take the two quick connect ¼" elbow fittings (item 6). Apply plumbing tape to threaded male end and screw into inlet and outlet side of filter head assembly (item 1).

### 6. Mount Filter Head under Sink

- Secure filter head, cartridge and mounting bracket with screws provided in desired location.

### 7. Connect Tubing to cold water inlet, Pressure Limiting Valve (PLV) and inlet of Head Assembly

- Remove plastic tubing from carton.
- The Pressure Limiting Valve (item 5) is connected between the isolation valve (item 4) and the Head Assembly (item 1).
- Measure the desired length of tubing from the isolation valve to the inlet of the PLV.
- Cut tubing using Stanley knife or similar ensuring the cut is square and clean.
- Remove tightening nut from isolation valve and place over tubing then over isolation valve nipple - secure with tightening nut.

- Take other end of tube and insert into inlet of PLV - push in tightly then pull back to ensure firm connection.
- When pulling back plastic tubing, take a Quick Connect Locking Clip (item 8) and secure it behind the round collet to secure fitting - refer installation diagram.
- Measure length of the tube from the outlet of the PLV to the inlet of the filter head assembly and repeat the process.
- The Quick Connect Locking Clips should be used on the two PLV connections, two head connections and one tap adaptor connection.

### 8. Connect Tubing to outlet of Head Assembly and to filter tap

- Measure length of tube from the outlet of the head Assembly (right hand side) to the base of the filter or mixer tap making sure that there are no kinks in the tubing.
- Cut tubing to desired length using Stanley knife or similar ensuring that the cut is square and clean.
- Insert tube end into the Head Assembly "push fit" connection on the outlet of the Head assembly (right hand side). Push the tube in tightly so that its firm – pull back on tube to secure - insert locking clip.
- At other end insert tube into tap adaptor (item 7). Push tube in tightly so that it's firm - pull back on tube to secure - insert locking clip.
- Screw onto threaded base of the filter or mixer tap – secure tightly.

### 9. Flush the Filter Cartridge

- Turn mains water supply back on at mini cistern tap.
- Open cold water line at the isolation valve
- At this stage check for leaks and fix if necessary
- Turn filter tap on and flush the filter cartridge for at least 3 minutes. Collect water in container and use for garden etc.

**NOTE – Flushing the filter cartridge is important to remove air from the system and any loose carbon. At first the water may appear cloudy due to compressed trapped air in the filter and hoses. However the cloudiness will disappear over time and with use.**

### 10. Installing the Filter Monitor Alarm (item 11)

The filter monitor alarm (item 11) is supplied to assist you with knowing when it is time to replace your filter cartridge. Regular annual cartridge replacement ensures that your filter system is maintained in accordance with the manufacturers recommendations.

- Remove double sided tape and plastic wrapper from monitor.
- On the back of the monitor - Pull the tab back.
- The LED and buzzer will cycle 3 times to confirm the start.
- It is programmed to flash and sound again in 12 months.
- Remove the two adhesive tapes from the back of the monitor and locate/mount in a convenient location under your kitchen sink.

### NOTES

- This installation must comply with all applicable state and local regulations**
- Do not use with water that is microbiologically unsafe or of an unknown quality without disinfection before or after the system.**
- When storing filtered water in a refrigerator please ensure the container has an air tight seal / lid.**

## WARRANTY

Unit Description, Permitted Use and Manufacturers Instructions for Use:

### Unit Description:

K-AU1000-CK

### Product Specifications:

The unit must only be used for a potable water source and with cold water (with a temperature range between 5 and 38 degrees C). This unit must be installed in accordance with state and local laws.

### Warranty

Water Filters Australia Pty Limited, Unit 1, 91-93 Old Pittwater Road, Brookvale, NSW Australia 2100 warrants to you, the first person who has purchased and used the unit ("you") that this unit is free from defects due to faulty material and workmanship in accordance with the conditions set out in this document.

### What this warranty covers:

This warranty covers defects due to faulty material and workmanship of the unit supplied to you:

- For a period of 1 year from the date of purchase in respect of the entire unit, excluding the Replaceable Elements

The Replaceable Elements are consumable components and all parts of the unit which can be replaced including but not limited to the filter or water treatment cartridge if there is a defect in the filter or cartridge. This does not include the replacement of the filter or cartridge to extend the life of the filter or cartridge. The life of the filter cartridge is affected by water quality, usage and water pressure.

The warranty only extends to the original purchaser of the unit.

### What this warranty does not cover:

This warranty does not cover the unit or a Replaceable Element of the unit where:

- The defect, fault or failure is attributable, or substantially attributable to misuse, abuse,

accident, misapplication, neglect, freezing, oxidizing agents (including but not limited to chlorine, ozone, chloramines and other related components) or act of God;

- The unit has been in conditions which do not conform to the recommended design guidelines or has been operated in a manner which is contrary to WFA's printed instructions;
- The unit has not been installed in accordance with WFA's printed instructions and has not been installed in compliance with all applicable laws, regulations and industry standards;
- The unit has not been used in accordance with the manufacturers instructions;
- The unit does not meet the conditions for use described in the owners guide or performance data sheet for this unit;
- You use accessories or components which do not meet WFA's specifications as set out in the Installation and Operating Manual;
- The defect, fault or failure is due to normal wear and tear;
- The defect, fault or failure has occurred where the unit has been used reasonably or has reached its serviceable life;
- The serial or model number label of the unit is removed or defaced;
- The unit is serviced, modified, altered or repaired by an unauthorized or unqualified person;
- You have received incorrect advice from the retailer or authorized dealer about the suitability or capability of the unit;

The cost of freight for or relating to the repair or replacement of the Replaceable Element or the unit must be paid by you.

### How to make a claim under this warranty:

To make a claim under this warranty you must contact WFA within 21 days of the defect, fault or failure occurring. WFA Warranty Contact number is 1300 785 355 or alternatively contact us via email [info@waterfiltersaust.com.au](mailto:info@waterfiltersaust.com.au) or by mail via PO Box 636, Freshwater NSW 2096.

At the time of repair or replacement under your warranty claim you must provide to WFA:

- Proof that you purchased the unit from an authorized retailer or dealer within the warranty time; and
- A copy of a certificate which certifies that the unit was installed in compliance with our printed installation instructions and all applicable laws, regulations and industry standards.

WFA will only pay for repair or replacement upon receipt of proof of your purchase showing the date of purchase.

### Limitation of Liability of WFA under this warranty:

Where a warranty exists or is implied by law, WFA's liability is limited (to the extent that it can be limited) to repair or replacement of the faulty Replaceable Element or the unit or an equivalent unit. WFA may, in its discretion, choose whether it shall repair or replace any unit or Replaceable Element or WFA may choose to pay to you the cost of replacing the Replaceable Element or the unit or the cost of having the unit repaired.

To the extent permitted by law, WFA assumes no liability whatsoever and disclaims all liability for direct, indirect or consequential loss, or special, general or other damage or expense caused by or arising out of:

- Any failure to install or use the unit in accordance with the Manufacturers Instructions, the Installation and Operating manual or WFA's printed instructions; or
- The purpose for which you are purchasing the unit.

You acknowledge that the quality of water supply and your water usage rate and influent water pressure may vary seasonally or over a period of time. In addition to this water characteristics can differ if the unit is relocated or the environment changes.

You acknowledge that WFA does not know your requirements and cannot and does not warrant that the unit is fit for the purpose for which you

intend to use the unit or is appropriate for the purpose for which you intend to use the unit.

WFA does not authorize others to assume any obligation on its behalf even if you inform them of the purpose for which you intend to use this unit.

Our goods come with guarantees that cannot be excluded under the Australian Consumer Law. You are entitled to a replacement or refund for a major failure and for compensation for any other reasonably foreseeable loss or damage. You are also entitled to have the goods repaired or replaced if the goods fail to be of acceptable quality and the failure does not amount to a major failure.

### Warning

WFA does not recommend making alterations to your existing plumbing to accommodate this filter system. If you wish to modify existing plumbing you must comply with AS 3500 and use a licensed plumber.

Where internal water pressure exceeds 600 kPa a Watermark approved Pressure Limiting Valve must be installed prior to the filter system.

### Warning

The contaminants or other substances removed or reduced by this water treatment system are not necessarily in your water supply. Do not use with water that is microbiologically unsafe or of an unknown quality without disinfection before or after the system.

### Important

This filter is designed to be used with mains/city disinfected water supplies.

### Caution

Safely isolate the water supply prior to installing the filter system to avoid injury and property damage.



## Water Filter Connection Kit

Model: K-AU1000-CK

### Features

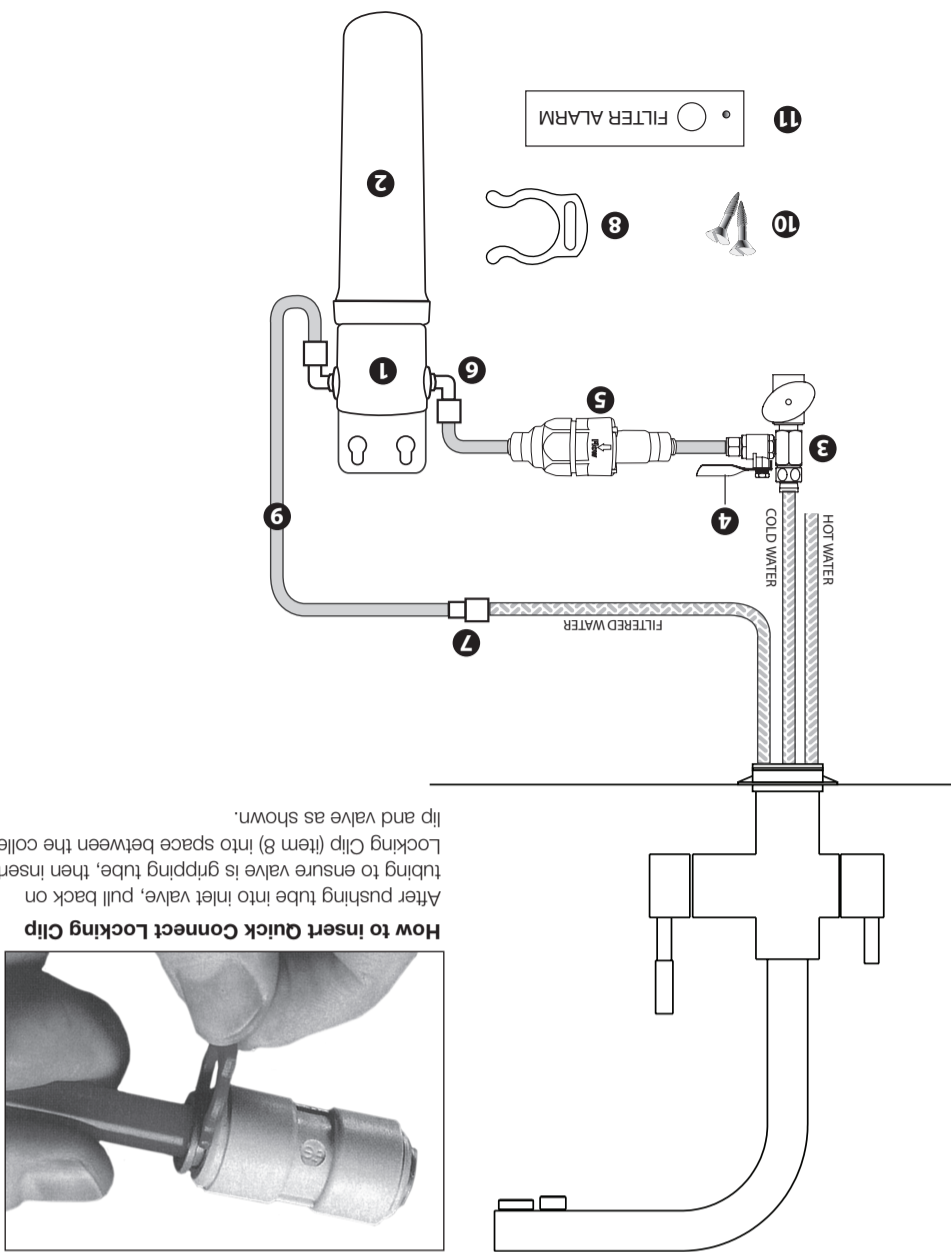
- In-built shut off valve in head enables filter change without turning off cold water.
- Carbon block filtration
- 12 months cartridge life (subject to water quality, usage and pressure)
- DIY Cartridge replacement – quick change bayonet style
- Pressure limiting valve
- Filter alarm monitor
- Reduces dirt, sediment particles and turbidity
- Reduces Chlorine
- Reduces bad tastes and odours
- Compliant with NSF Standard 42.

### Product Specifications

- Size Required: Height - 360mm  
Depth - 100mm  
Width - 100mm
- Usage: For Cold Water Use Only
- Temperature Range: 5 - 38 C
- Min. - Max. Working Pressure: 25 - 100 psi
- Service Flow Rate: 3 Litres per minute
- Removes / Reduces: Chlorine, Turbidity, Bad tastes and odours, dirt and sediment particles
- Filter Change: 12 months or sooner if flow rate becomes inconveniently slow.
- This filter unit does not remove fluoride

## Water Filter Connection Kit

### Installation Diagram



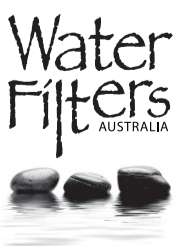
# Water Filter Connection Kit

Model: K-AU1000-CK

## Owners Manual

### Special Notes

- Installation instructions and standard warranty are enclosed herewith and included with product when shipped.
- This drinking water system must be maintained in accordance to manufacturers instructions, including replacement of filter cartridges.
- Do not use with water that is microbiologically unsafe or of an unknown quality without adequate disinfection before or after the system.
- The contaminants or other substances removed or reduced by this water filter system are not necessarily in your water supply.
- Check for compliance with state and local laws and regulations.



Distributed by **Water Filters Australia Pty Limited** ABN: 78 089 574 489  
 Unit 1, 91-93 Old Pittwater Road, Brookvale NSW 2100  
 PO Box 636 Freshwater NSW 2096  
 Phone: +61 2 9905 6211  
 Fax: +61 2 9905 6255  
 Email: [info@waterfiltersaust.com.au](mailto:info@waterfiltersaust.com.au)  
 Web: [www.waterfiltersaust.com.au](http://www.waterfiltersaust.com.au)  
 For all enquiries call the National Customer Service Centre on: **1300 785 355**

Thank you for purchasing a Water Filters Australia (WFA) under-sink water filtration connection kit. This system provides you with high quality filtered water that's clean, great tasting, healthy and convenient for you and your family.

This kit can be connected to any new or existing filter tap or any 3 way mixer tap.