

Service Manual

XPOS72-8B-A16G



Copyrights

©2009. All rights reserved. The information in this document is subject to change without prior notice in order to improve reliability, design and function and does not represent a commitment on the part of the manufacturer.

This document contains proprietary information protected by copyright. All rights are reserved. No part of this manual may be reproduced by any mechanical, electronic, or other means in any form without prior written permission of the manufacturer.

All trademarks are property of their respective owners

Liability Disclaimer

In no event will the manufacturer be liable for direct, indirect, special, incidental, or consequential damages arising out of the use or inability to use the product or documentation, even if advised of the possibility of such damages.

The information in this document is subject to change without notice

Contents

Copyrights	i
Liability Disclaimer	i
Contents.....	ii
1. Before You Start	1
2. Opening the Device.....	2
3. Remove the CF card	4
4. Touch Panel Control Board Disassembly	5
5. LED indicator Disassembly.....	6
6. Power Switch Disassembly.....	7
7. Mainboard and I/O Panel Disassembly	8
8. Speaker Assembly Disassembly	9
9. LCD Panel Disassembly	10

1.

Before You Start

1. Please unplug the power cable before you start to work.
2. Please read and follow the instructions in this document carefully. Failure to follow these instructions could damage your device and void the warranty.

1.1. Tools Suggested

All procedures in this document require the following tools:



**#0 Phillips screwdriver
(Magnetized suggested)**



**#1 Phillips screwdriver
(Magnetized suggested)**



**1.5 mm hexagon socket spanner
(Magnetized suggested)**



3.0 mm slotted socket spanner

2.

Opening the Device

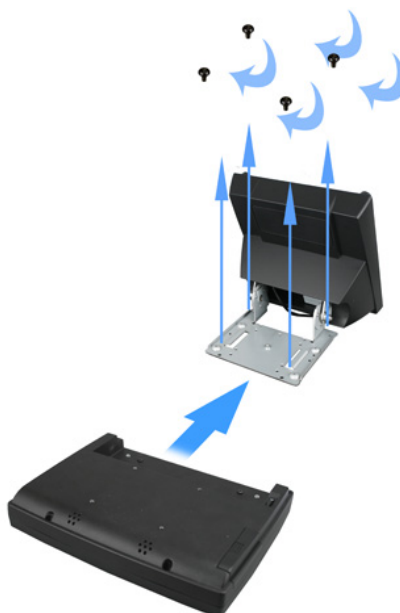
1. Unplug all cables and plugs from the device.
2. Loosen and remove the four screws fixing the base unit by #1 Phillips screwdriver.



3. Remove the right hinge cover, left hinge cover and support cover as shown below.



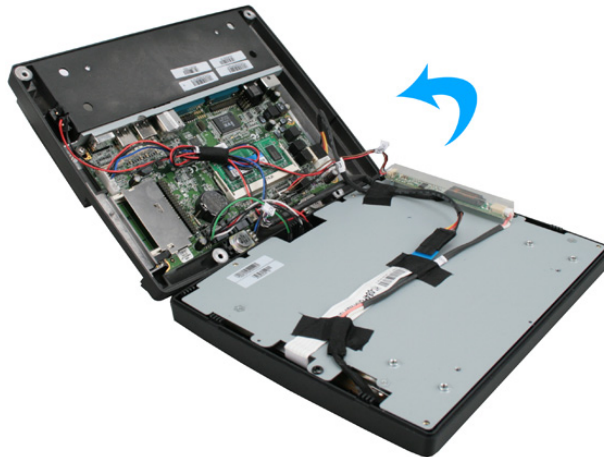
4. Un-tighten the four screws holding the base assembly and then separate the base assembly from the device.



5. Un-tighten six screws on the back panel anticlockwise.

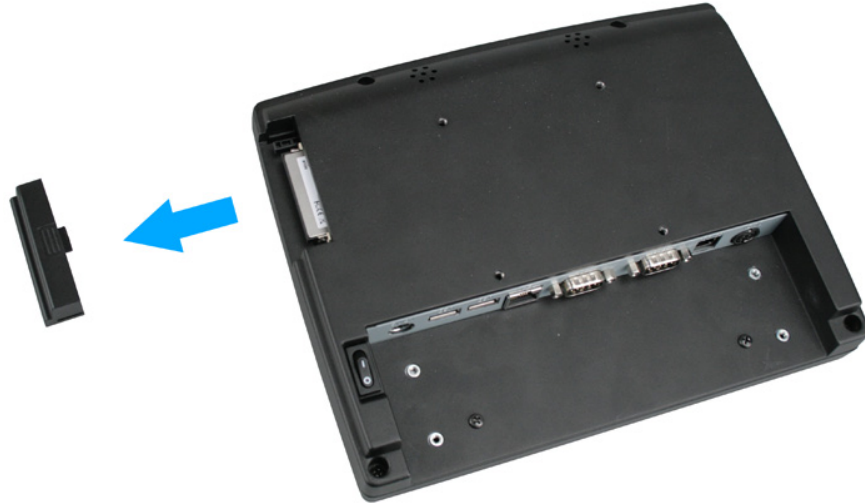


6. Separate the back panel from the front panel by lifting up and lay it down carefully.

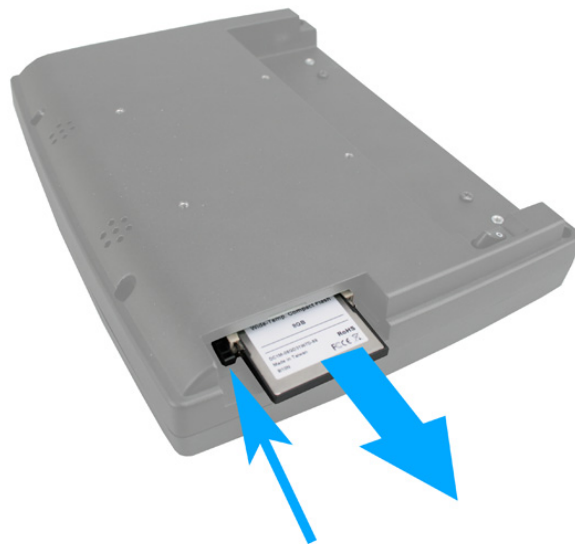


Remove the CF card

1. Remove the CF Card slot cover.



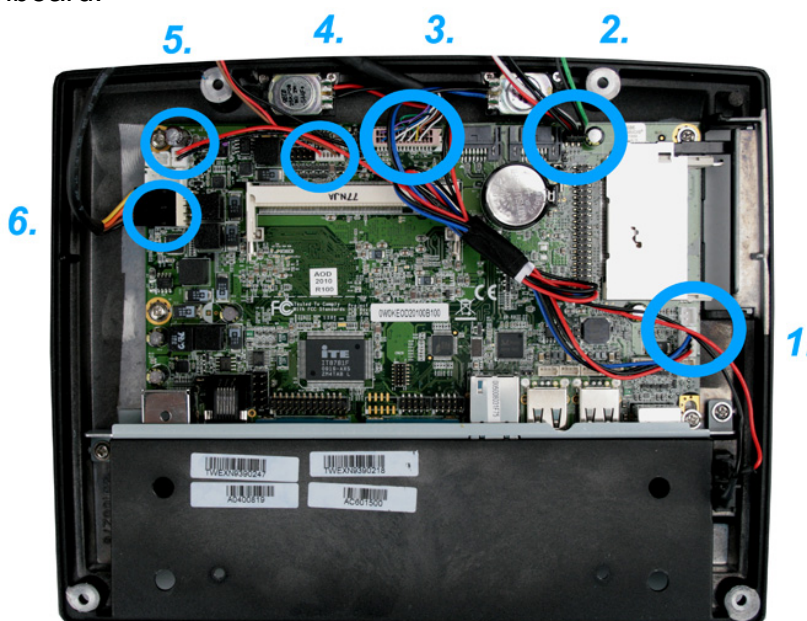
2. Push the CF card eject button and remove the CF card.



4.

Touch Panel Control Board Disassembly

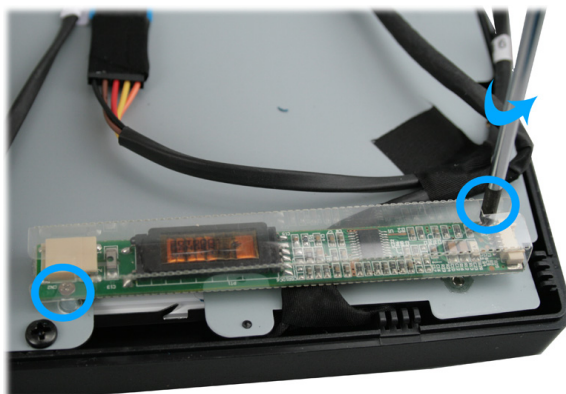
1. Remove: 1. Speaker connector, 2. LED indicator connector, 3. LCD connector, 4. inverter connector, 5. power switch connector, 6. touch panel connector from the mainboard.



2. Disconnect two connectors from the LCD inverter as shown below.



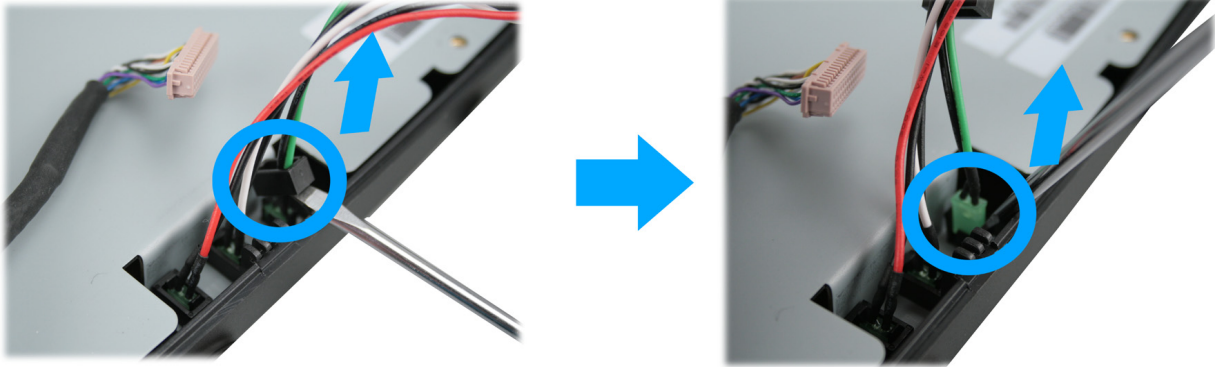
3. Loosen the two screws by #0 Phillips screwdriver and remove the LCD inverter.



4. Install the new LCD inverter in the reverse procedure.

LED indicator Disassembly

1. Pry the black plastic rectangle out and then the green LED out by slotted screwdriver.



2. Repeat the previous step to remove other LEDs.

Power Switch Disassembly

1. Remove the power switch from the device.



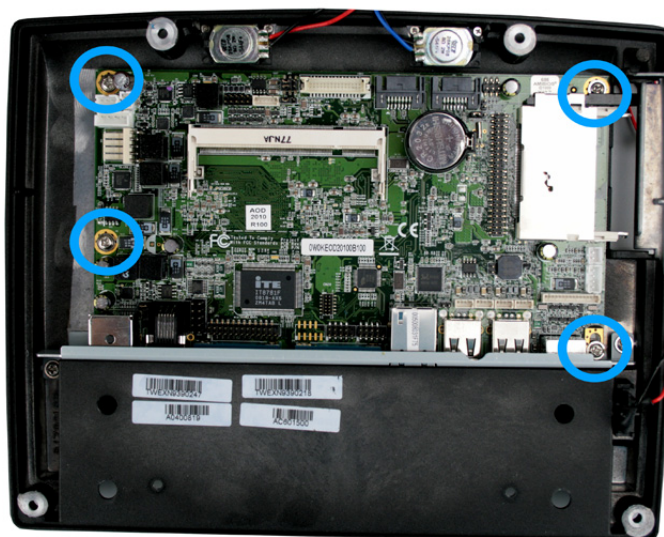
7.

Mainboard and I/O Panel Disassembly

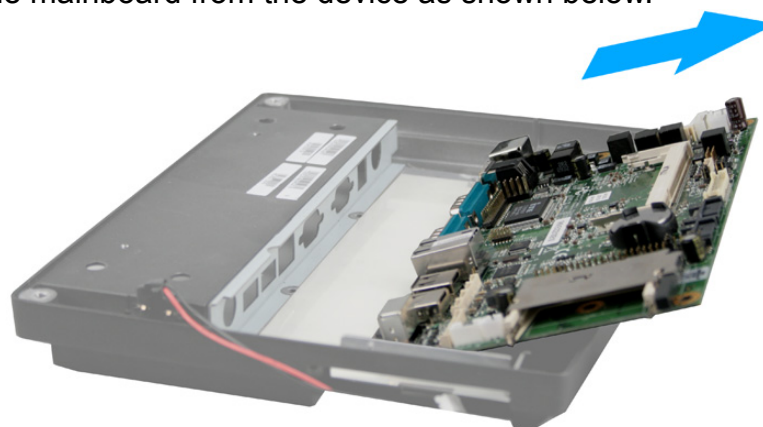
1. Loosen the four hexagonal screws by 1.5 mm hexagonal socket spanner as shown below.



3. Loosen the four screws by #0 Phillips screwdriver as shown below.

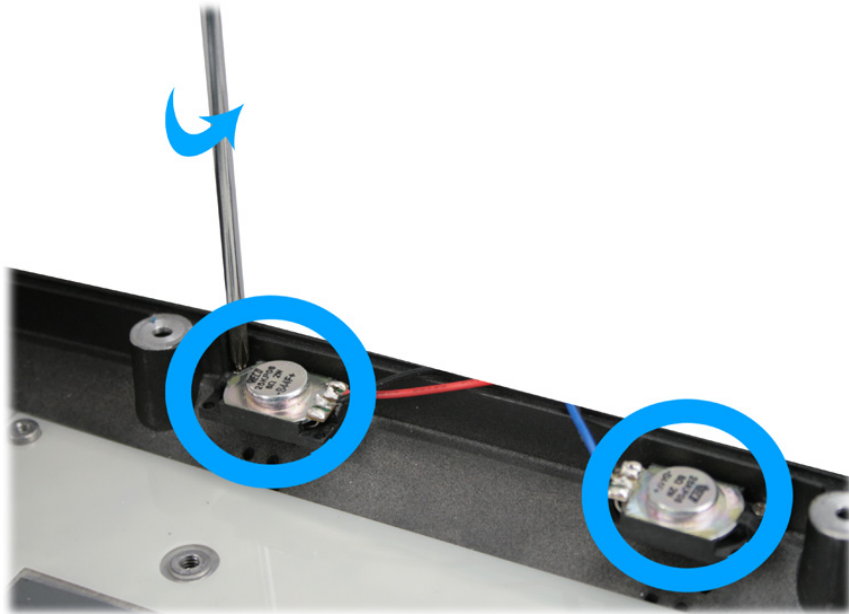


4. Remove the mainboard from the device as shown below.



Speaker Assembly Disassembly

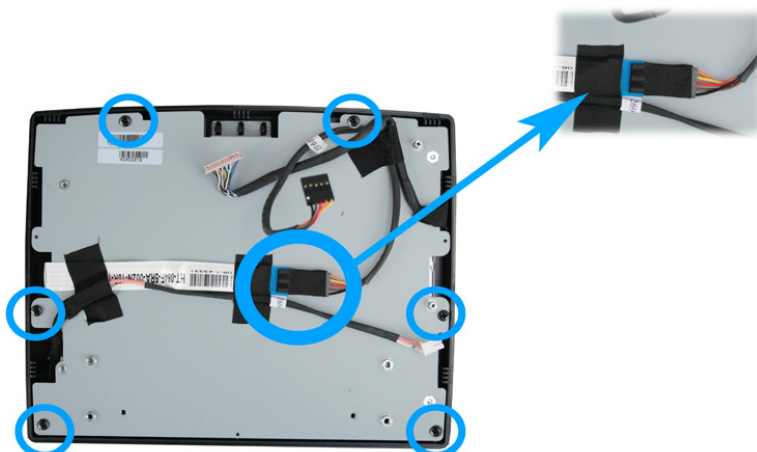
1. Loosen the four screws by #1 Phillips screwdriver as shown below and remove the speaker assembly from the device.



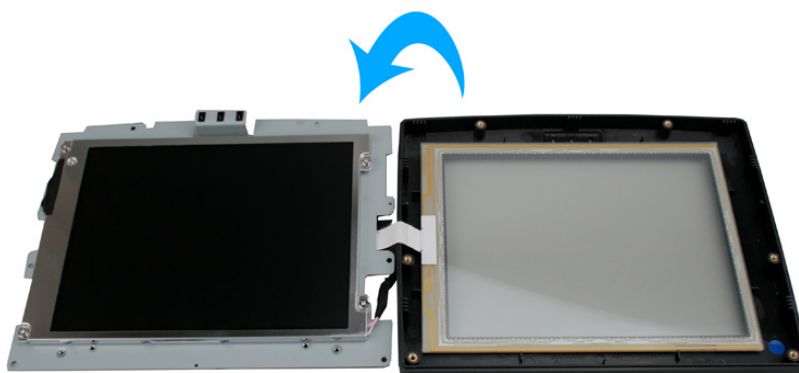
LCD Panel Disassembly

1. Follow steps below:

- (1) Remove the black tape and disconnect the touch panel cable.
- (2) Remove the six screws by #1 Phillips screwdriver as indicated below.



2. Separate the LCD panel assembly from the front bezel by lifting up and lay it down carefully.



2. Loosen the four screws in blue circle as shown below by #1 Phillips screwdriver, and you can remove the LCD panel.

