

Service Manual

XPOS72-2B-A16G



Copyrights

©2008. All rights reserved. The information in this document is subject to change without prior notice in order to improve reliability, design and function and does not represent a commitment on the part of the manufacturer.

This document contains proprietary information protected by copyright. All rights are reserved. No part of this manual may be reproduced by any mechanical, electronic, or other means in any form without prior written permission of the manufacturer.

All trademarks are property of their respective owners

Liability Disclaimer

In no event will the manufacturer be liable for direct, indirect, special, incidental, or consequential damages arising out of the use or inability to use the product or documentation, even if advised of the possibility of such damages.

The information in this document is subject to change without notice

Contents

Copyrights	i
Liability Disclaimer	i
Contents.....	ii
1. Before You Start	1
2. Opening the Device.....	2
3. RAM Disassembly	4
4. HDD Disassembly	5
5. Touch Panel Control Board Disassembly	7
6. LED indicator Disassembly.....	8
7. Power Switch Disassembly.....	9
8. Mainboard and I/O Panel Disassembly	10
9. Speaker Assembly Disassembly	13
10. LCD Panel Disassembly	14

1.

Before You Start

1. Please unplug the power cable before you start to work.
2. Please read and follow the instructions in this document carefully. Failure to follow these instructions could damage your device and void the warranty.

1.1. Tools Suggested

All procedures in this document require the following tools:



**#0 Phillips screwdriver
(Magnetized suggested)**



**#1 Phillips screwdriver
(Magnetized suggested)**



**1.5 mm hexagon socket spanner
(Magnetized suggested)**

Opening the Device

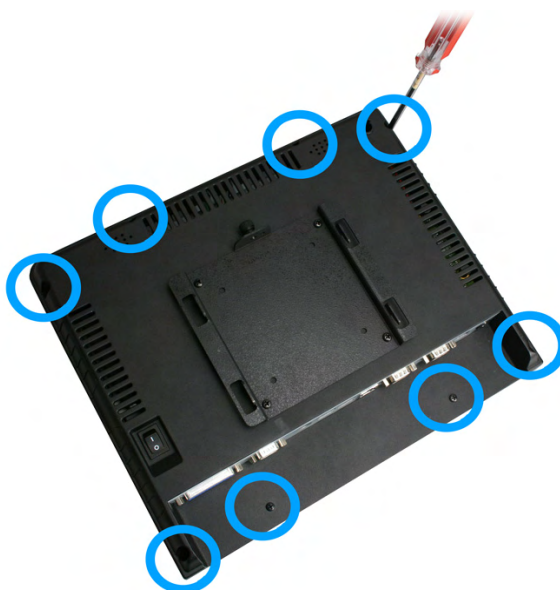
1. Loosen the screw of the VESW wall mount as shown.



2. Remove the device from the base.



3. Un-tighten six screws on the back panel anticlockwise.



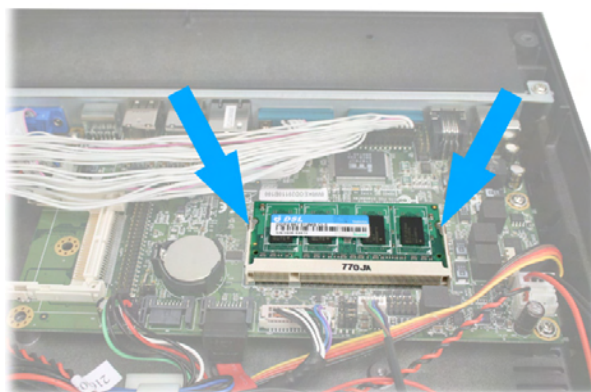
4. Separate the back panel from the front panel by lifting up and lay it down carefully.



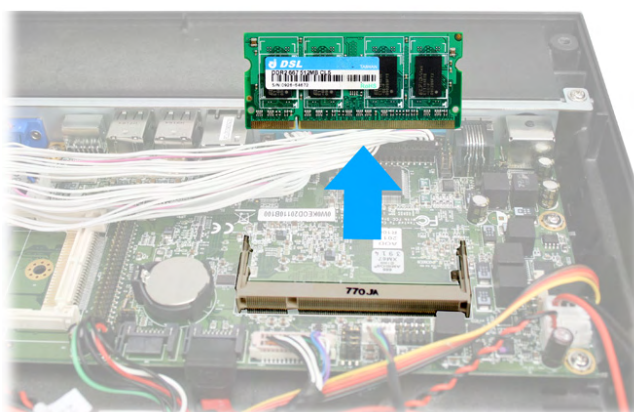
3.

RAM Disassembly

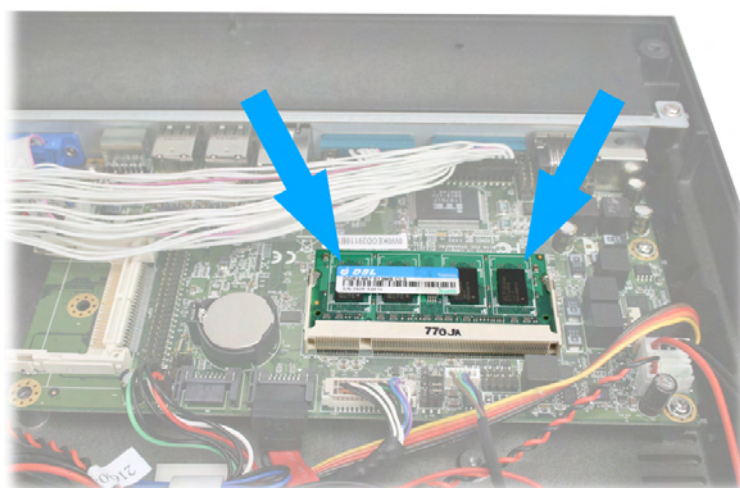
1. Open the two ejectors on the slot by pushing them, and remove the RAM from the slot.



5. Remove the old RAM.

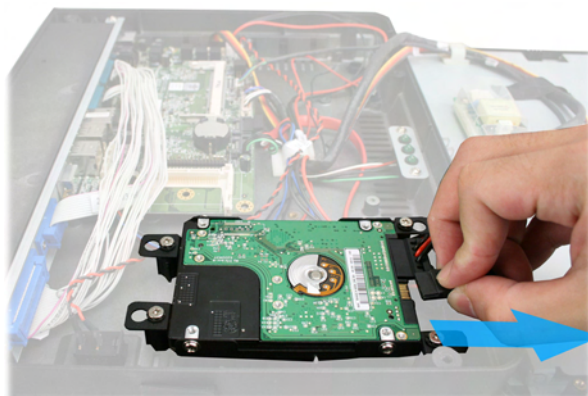


6. Align and insert the new RAM in the slot and push both ends of the RAM down until the ejectors snap into place.



HDD Disassembly

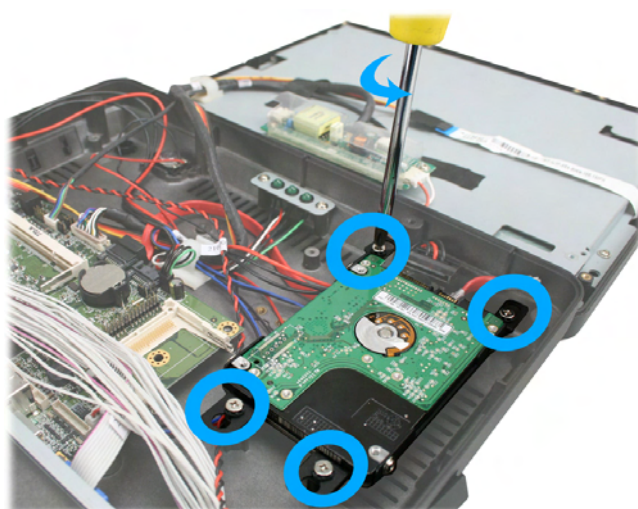
1. Unplug one connector of the SATA cable from the HDD.



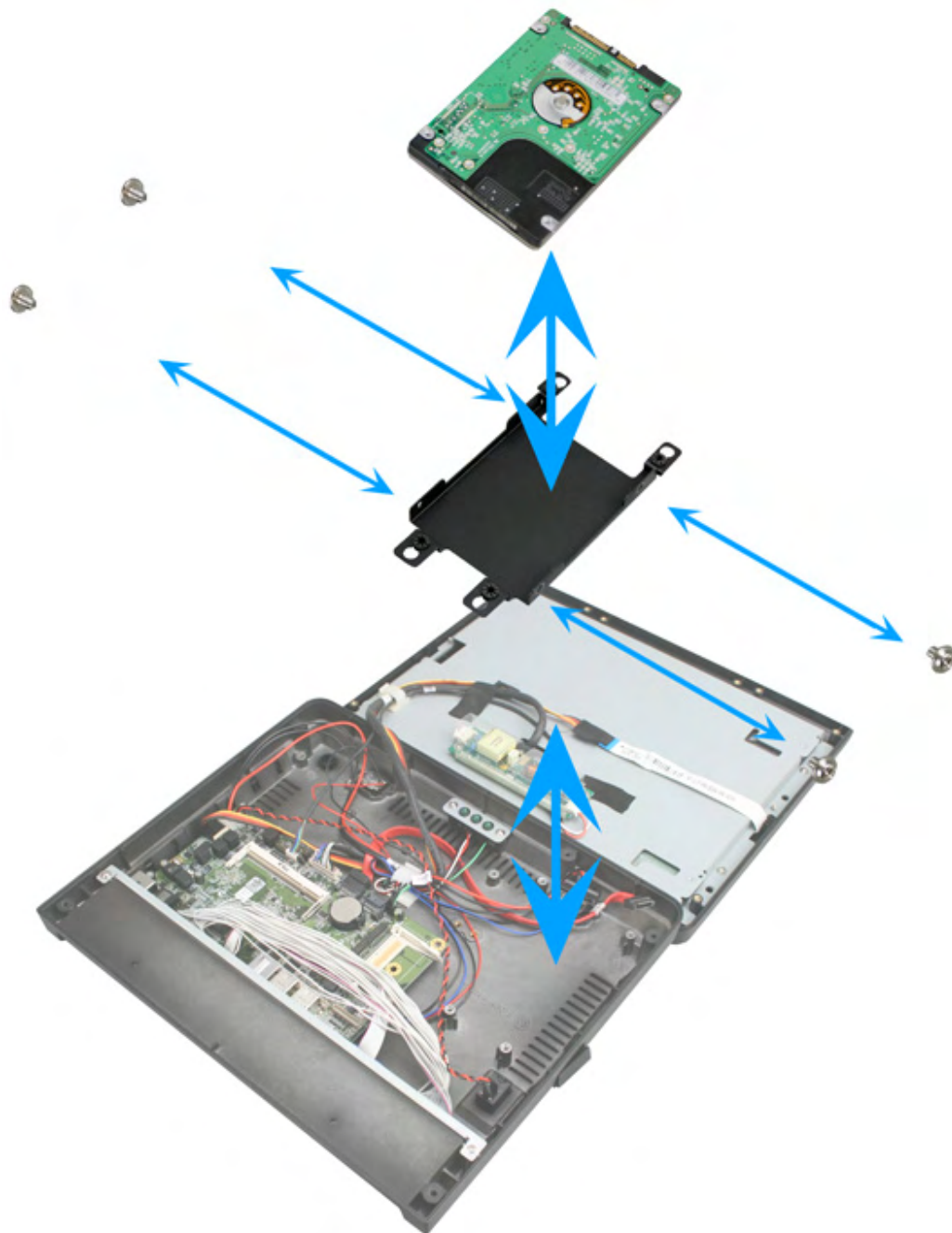
2. Unplug one connector of the power cable from the HDD.



3. Loosen the four screws by #1 Phillips screwdriver as shown below and remove the HDD assembly from the device.



4. Loosen the four screws fixing the HDD and remove the HDD from the bracket as shown below.

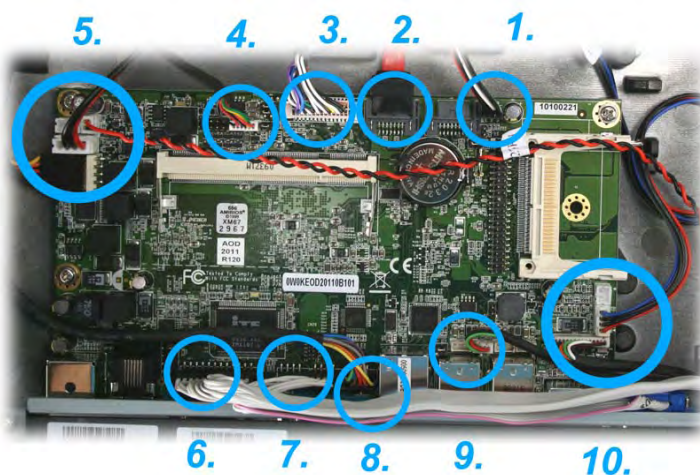


5. Install the new HDD in the reverse procedure from Step 4 to Step 1.

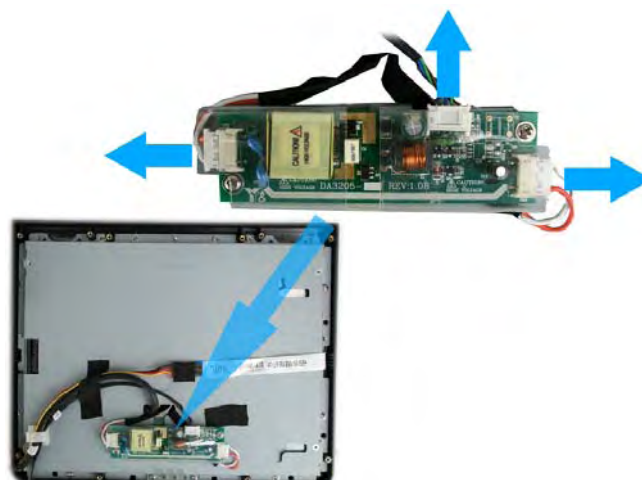
5.

Touch Panel Control Board Disassembly

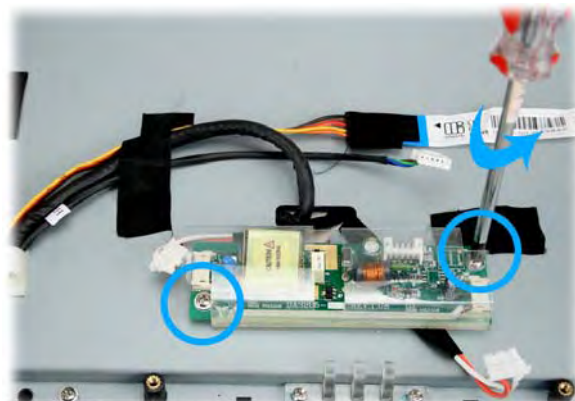
1. Remove: 1. LED indicator connector, 2. SATA cable, 3. LCD connector, 4 inverter connector, 5. power switch connector, HDD power cable and touch panel cable, 6 parallel port cable, 7. serial port cable, 8. Customer display cable, 9. USB cable and 10 speaker and MSR cable from the mainboard.



2. Disconnect three connectors from the LCD inverter as shown below.



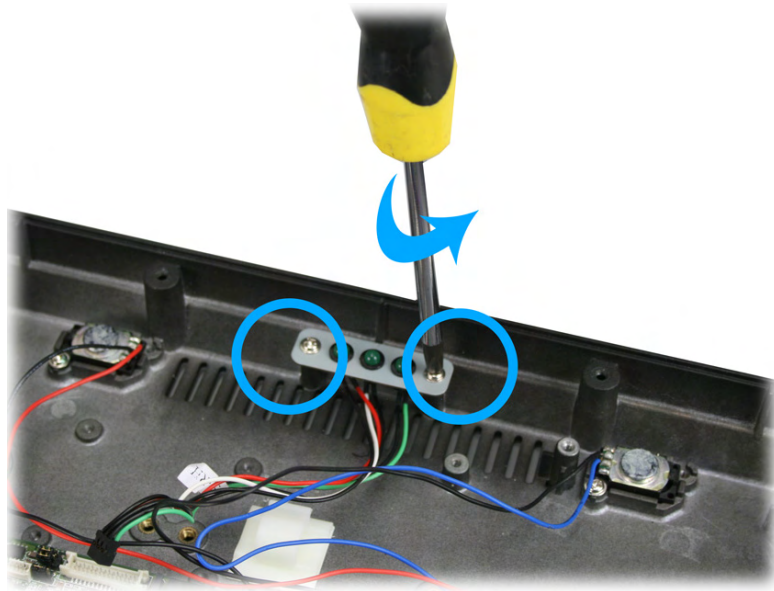
3. Loosen the two screws by #0 Phillips screwdriver and remove the LCD inverter.



4. Install the new LCD inverter in the reverse procedure.

LED indicator Disassembly

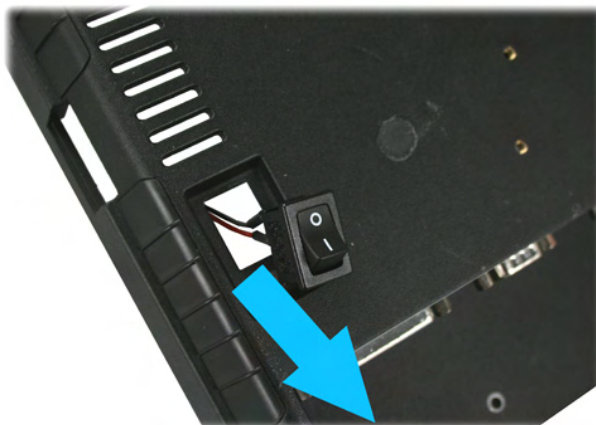
1. Loosen the two screws by #0 Phillips screwdriver and remove the LED indicator.



7.

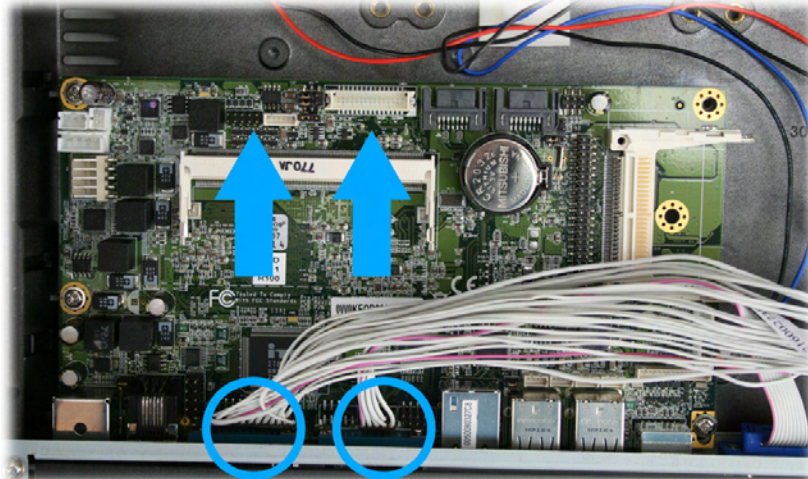
Power Switch Disassembly

1. Remove the power switch from the device.



Mainboard and I/O Panel Disassembly

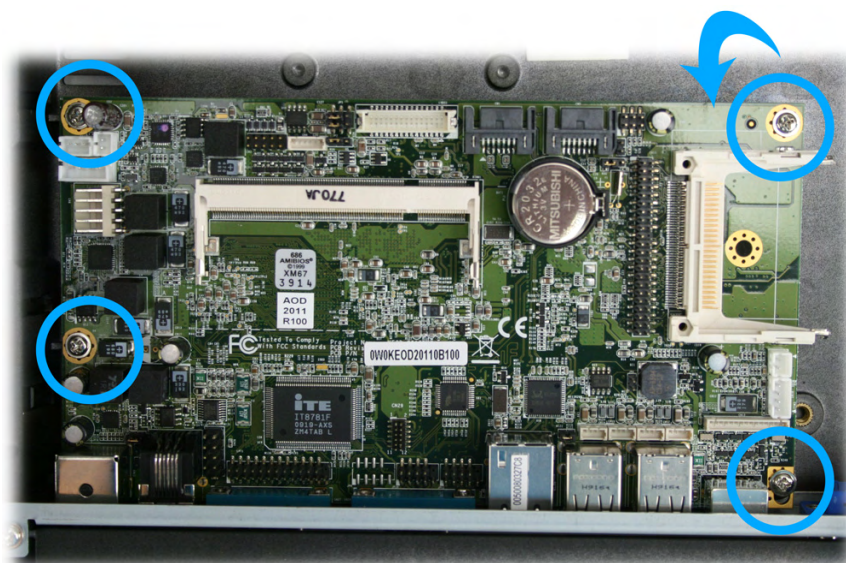
1. Disconnect the serial port cable and parallel port cable and COM cable from the mainboard.



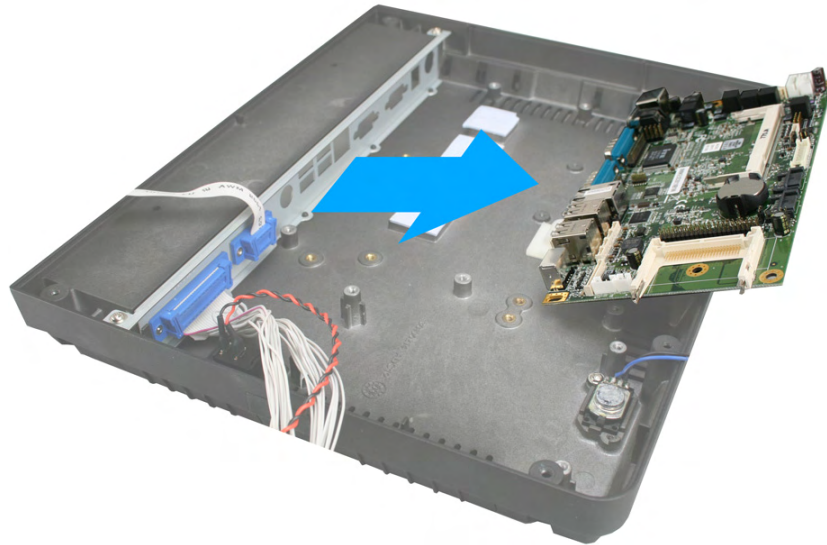
2. Loosen the four hexagonal screws by 1.5 mm hexagonal socket spanner as shown below.



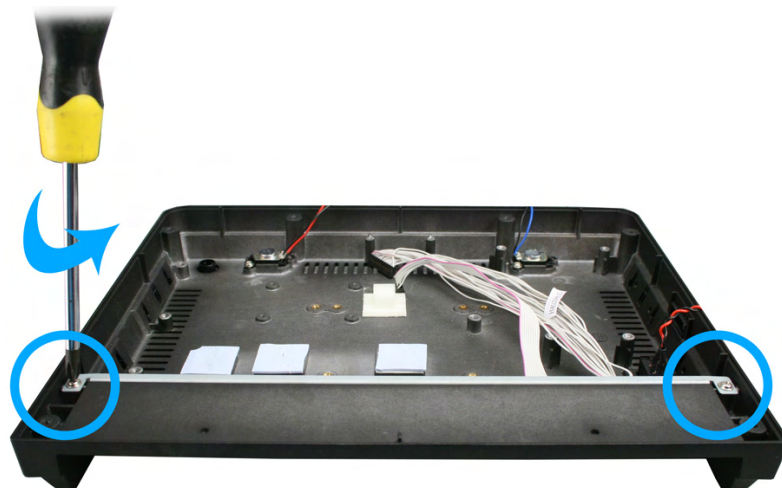
3. Loosen the four screws by #0 Phillips screwdriver as shown below.



4. Remove the mainboard from the device as shown below.



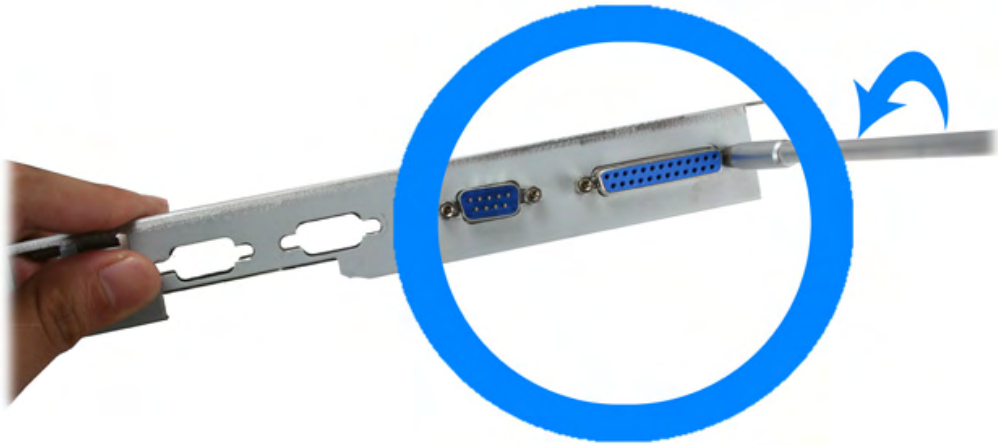
5. Remove the two screws by #1 Phillips screwdriver and remove the I/O panel.



6. Remove the I/O panel from the device as shown below.

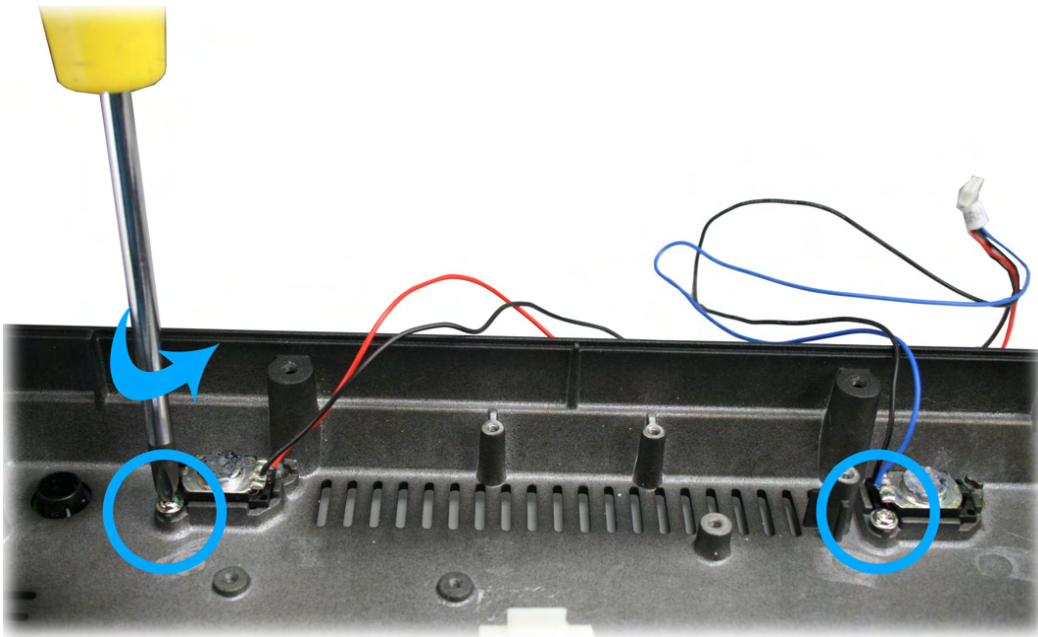


7. Loosen the four hexagonal screws by 1.5 mm hexagonal socket spanner as shown below and you can remove the COM port and parallel port from the I/O panel.



Speaker Assembly Disassembly

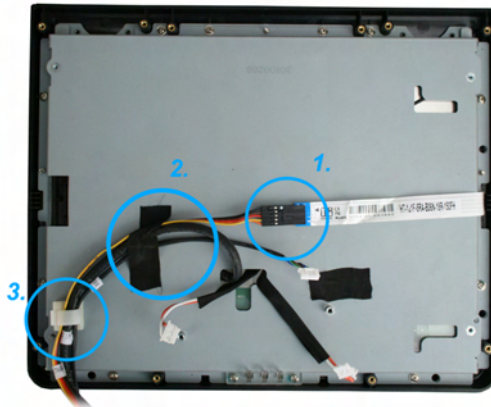
1. Loosen the four screws by #1 Phillips screwdriver as shown below and remove the speaker assembly from the device.



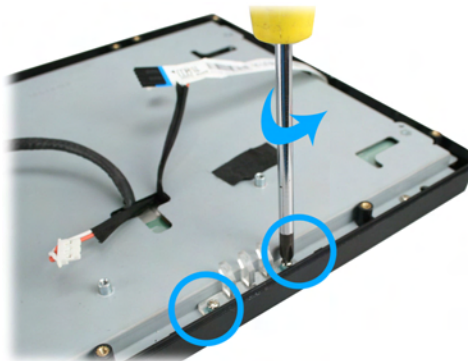
LCD Panel Disassembly

1. Follow steps below:

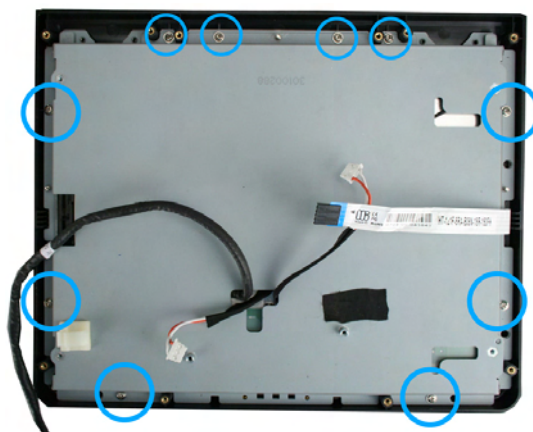
- (1) Disconnect the touch panel cable.
- (2) Remove the black tape.
- (3) Remove the cables from the white plastic clamp.



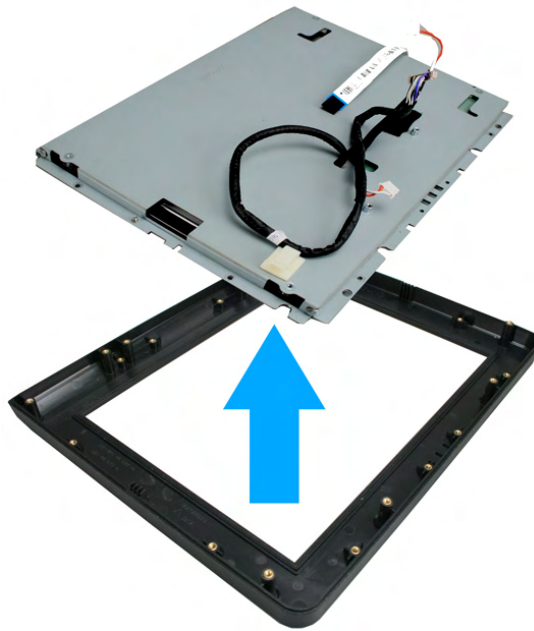
2. Loosen the two screws fixing the LED indicator cover and you can remove the LED indicator cover from the device.



2. Loosen the tent screws in blue circle as shown below by #1 Phillips screwdriver.



3. Remove the LCD panel assembly.



4. Loosen the three screws in blue circle as shown below by #1 Phillips screwdriver.



5. Remove the touch panel cover.



6. Loosen the four screws in blue circle as shown below by #1 Phillips screwdriver.



7. Remove the LCD panel.

