

OBD
TRACE

OBD
TRACE



I.C.M. Inc.

Add: 5F-5, No.91, Dashuen 1st Rd., Tzuoying Dist., Kaohsiung, Taiwan 81357

E-mail: icm@icm.com.tw | <http://www.icm.com.tw>

TEL: 886-7-5577691-2 | FAX: 886-7-5575965

Version:20121219

USER MANUAL

1. Hardware Coverage	1
2. OBD TRACE Hardware	1
3. Hardware Connection Diagram	2
4. PC Requirements	3
5. PC Settings	3
6. USB Hi-Speed Cable Driver Installation	5
7. USB Hi-Speed Cable Driver Troubleshooting	7
8. USB Hi-Speed Cable Driver Removal	9
9. Software Installation	9
10. Software Removal	10
11. Administration Program	12
12. Software Registration	15
13. Hardware Upgrade	20
14. Warranty Policy	24

1. Hardware Coverage

1 OBD TRACE Hardware



2 16-pin OBDII Diagnostic Connector *Please find it from WIN-STAR Package.



3 USB Hi-Speed Cable



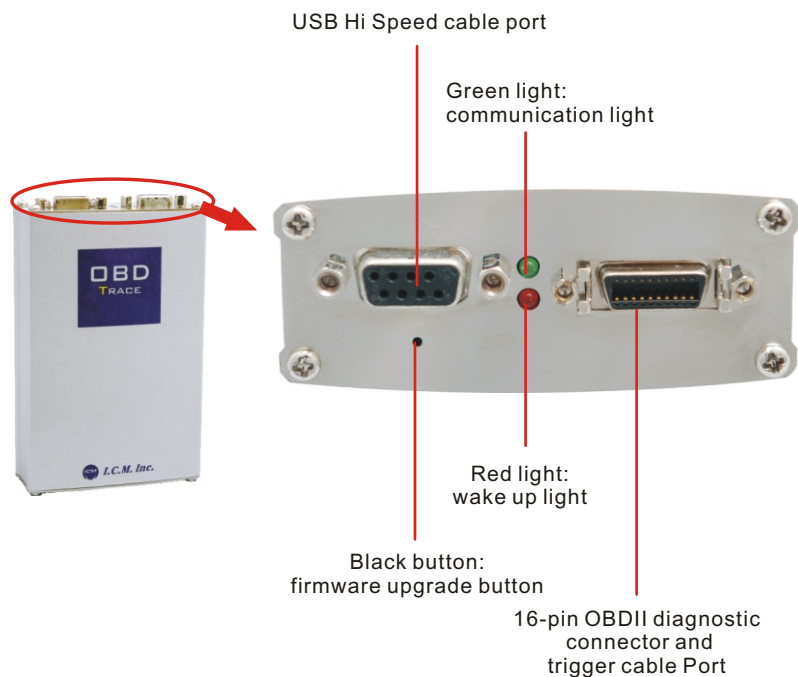
4 Software CD



5 16-pin OBDII diagnostic connector and trigger cable



2. OBD TRACE Hardware



3. Hardware Connection Diagram

Before diagnosis, please connect your Diagnostic Interface as below.

- 1. To configure data, please connect your OBD TRACE interface as below: The red light will be on when interface is connected.**
PC → USB Hi Speed cable → OBD TRACE interface → 16-pin OBDII diagnostic connector and trigger cable → car

Note: Must remove the USB Hi Speed cable after configuring data is completed.




- 2. Check the OBD trace is connected when recording data**
 - Turn the IG ON . The red light will be on when interface is connected.
 - Start the engine. The red light and green light will be both on when recording data.

- 3. To Analyze data, please connect your OBD TRACE interface as below:**
PC → USB Hi Speed cable → OBD TRACE interface



4. PC Requirements



Operation system	WINDOWS 2000, XP, Vista (32 bit), WINDOWS 7 (32 bit) is required.
CPU	CPU 1.6 Ghz or higher
RAM	WINDOWS 2000 / XP: 512 MB; WINDOWS 7 / Vista: 2G
Hard Disk Space	Free space more than 1GB (on C driver)
Display	Resolution 1024*768
	 Please use USB Hi-Speed Cable to connect your PC with WIN-STAR PLUS Multiplexer (Ref. 2. Hardware Coverage ③) to connect your PC with WIN-STAR PLUS Multiplexer
Notes	When you use Windows Vista or Windows 7, first you need to close "User Account Control (UAC)", please refer to P.3 No.5. PC Settings.


5. PC Settings

When you use Windows 7, please finish the setting below to run our software successfully.

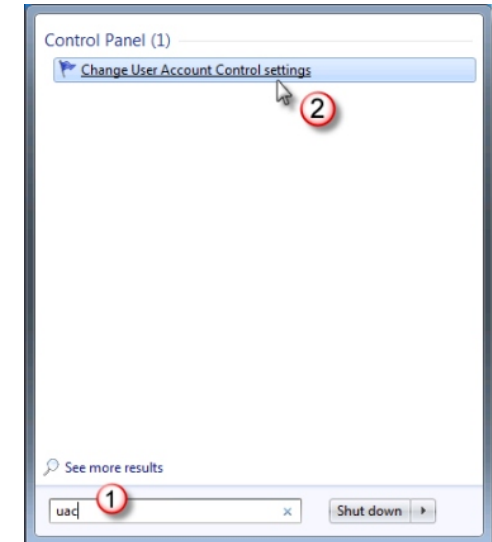
First, you need to disable "User Account Control (UAC)" before installing our software.

1. To use the control panel to disable UAC in Windows 7, there are several methods to access the User Account Control settings page:

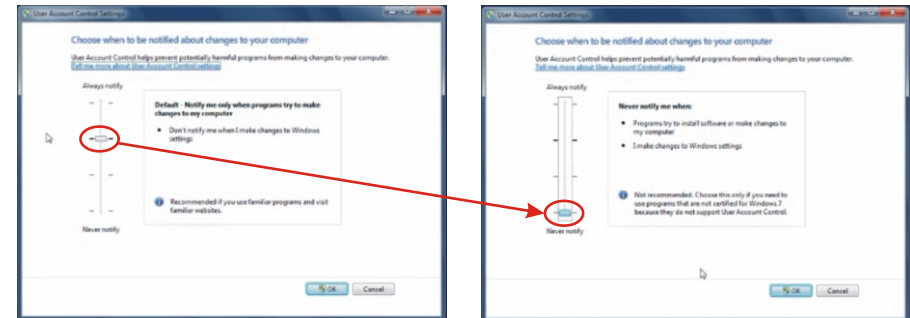
Do one of the following:

- Go to Start Menu  → Control Panel → User Accounts and Family Safety → User Account.
- Go to Start Menu  → Control Panel → In the search box, type UAC.

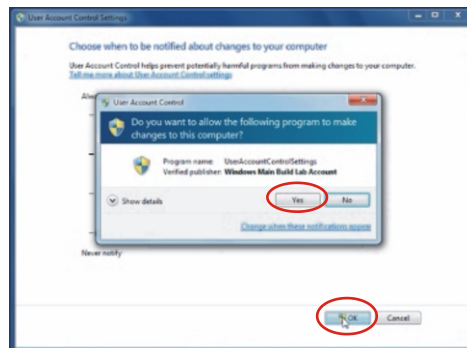
2. Click on "Change User Account Control settings".



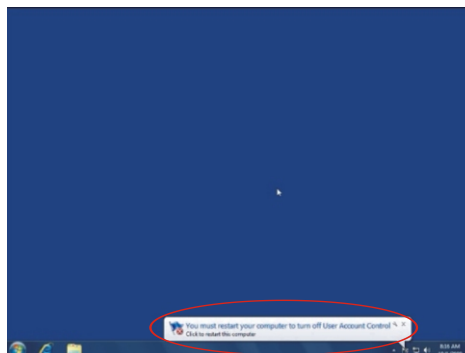
3. Move the slider to the "Never notify" position.



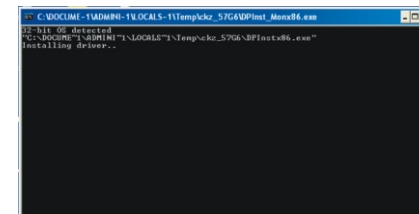
4. Click “Yes” and “OK” to make the change effective.



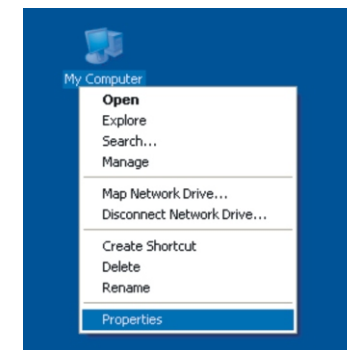
5. You are required to restart the computer to turn off User access control effectively.



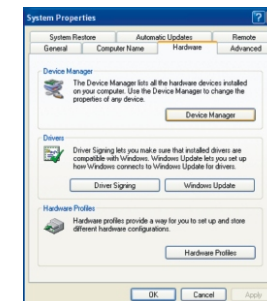
3. It will automatically install the program. After the DOS frame disappears, it means the installation is done.



4. To confirm the installation is complete, please right click “My computer”→ “Properties” on the desktop.

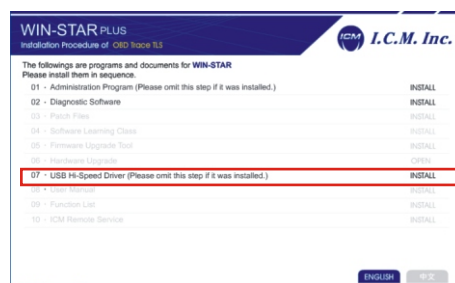


5. Click “Hardware”→“Device Manager”



6. USB Hi-Speed Cable Driver Installation

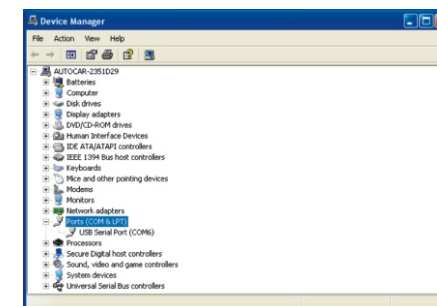
1. Start the computer
2. Insert Software CD in to CD-ROM drive. Installation window should pop up. Choose “USB Hi-Speed Driver” and click “Installation”



※If you can't see the window pop up, please execute “OBD_TRACE_setup.exe” from CD-ROM drive to install the program.

6. Then click “Ports (COM & LPT)” to unfold items. When USB Hi-Speed Cable is plugged in and pulled out, USB Serial Port will appear variably, which means it can collocate with PC.

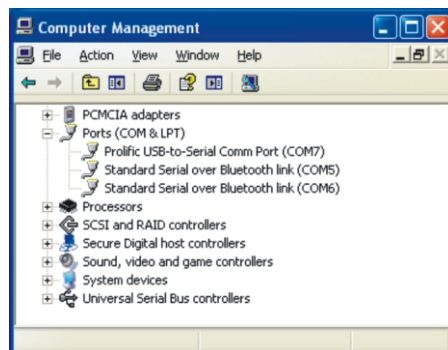
Note: In order to find out USB Serial Port, USB Hi-Speed Cable is requested to connect with WIN-STAR PLUS Diagnostic Interface and PC first.



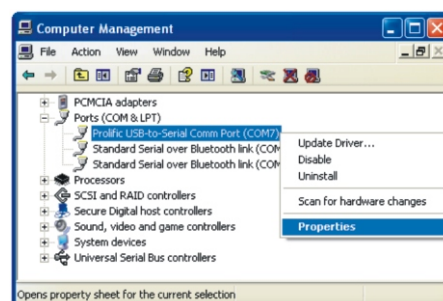
7. USB Hi-Speed Cable Driver Troubleshooting

7-1. If there is a bluetooth device within your computer and it uses one of the ports (COM&LPT), please check if the COM number of bluetooth is less than the COM number of USB Serial Port. If so, please take the following steps.

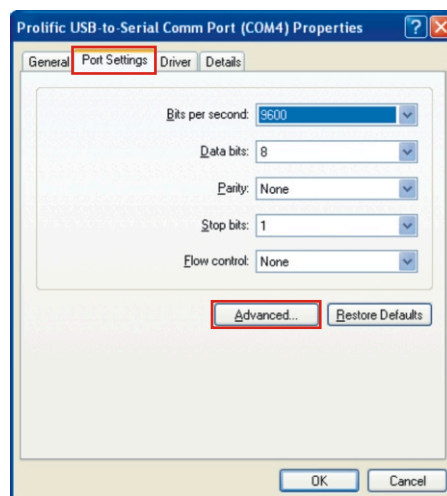
※ As seen on the picture, the COM number(COM6) of bluetooth is less than the COM number(COM7) of Prolific USB-to-Serial Comm Port.



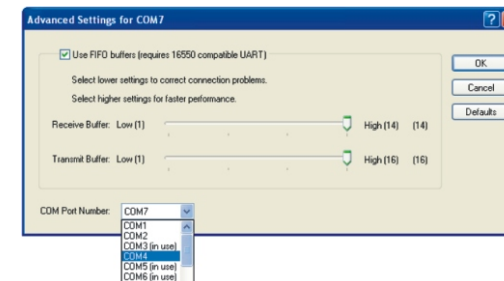
7-2. Choose “Prolific USB-to-Serial Comm Port (COM7)”, and then click “Properties”



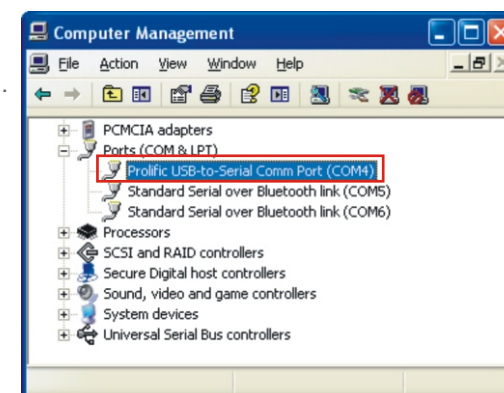
7-3. Choose “Port Settings”, and then click “Advanced”



7-4. Use the menu of COM Port Number and find out a COM number which is not in use and make sure the number must be less than the COM number (COM6) of bluetooth. For example: COM4 Click “OK”



7-5. Then, “Prolific USB-to-Serial Comm Port” is changed from COM7 to COM4 as in the picture.

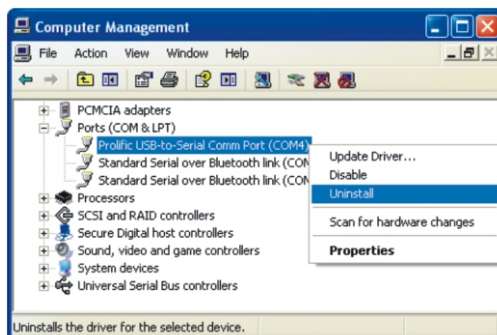


※ Unable to use the USB Hi-Speed Cable Driver after installation

- If you have already followed the steps above to install the driver, it still might not work with USB Hi-Speed Cable. Please click “My Computer” on the desktop→choose“Properties”→“ Device Manager ”.
- Then click “+” sign of “Ports (COM & LPT)” to display all items.
- If it displays “ ! ” sign, it means the cable can't work correctly.
- Please disconnect the cable and remove the driver (Please follow the steps below to remove it), reboot the computer, and then install the driver again.

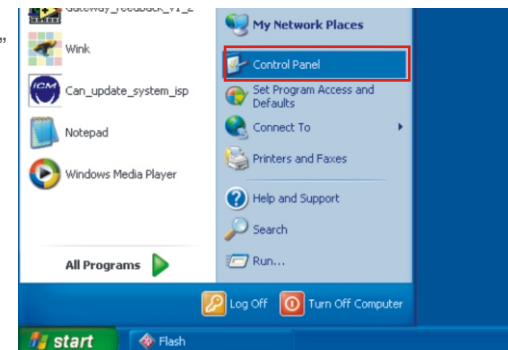
8. USB Hi-Speed Cable Driver Removal

- ※ Please enter Device Manager to find its COM port, and choose “uninstall” to remove the driver.

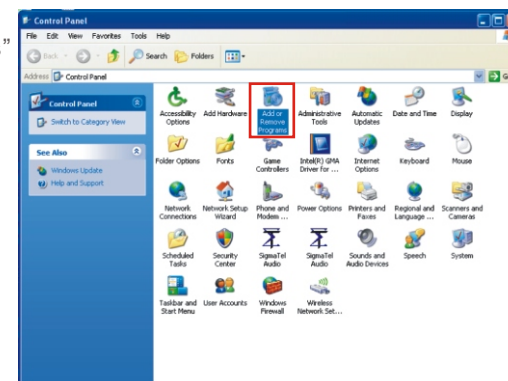


10. Software Removal

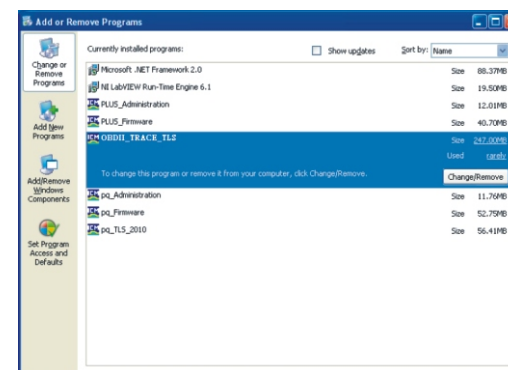
1. Click “Start Menu” → “Programs” → “Control Panel”



2. Click “Add or Remove Programs”

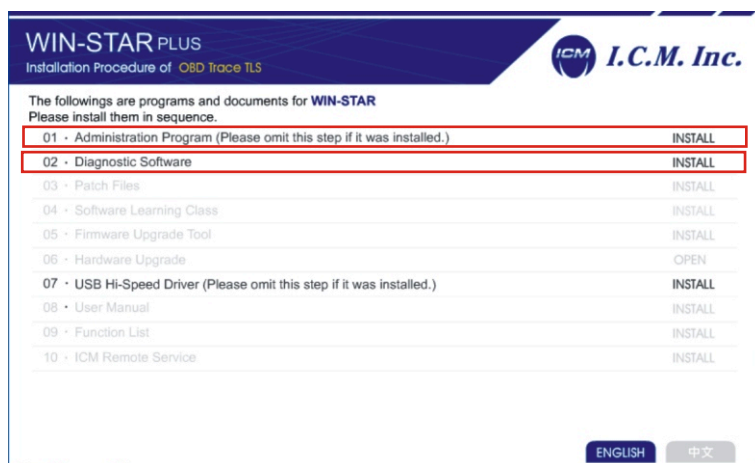


3. When the list is shown, Look for “OBDII_TRACE_TLS” and click “Change/Remove”



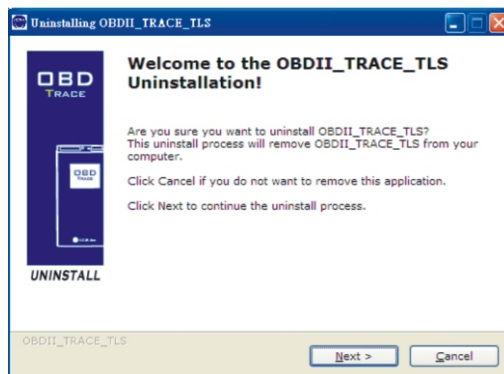
9. Software Installation

1. Start the computer
2. Insert Diagnostic Software CD to CD-ROM drive. Installation window should pop up. Please follow the sequences to install the required programs.

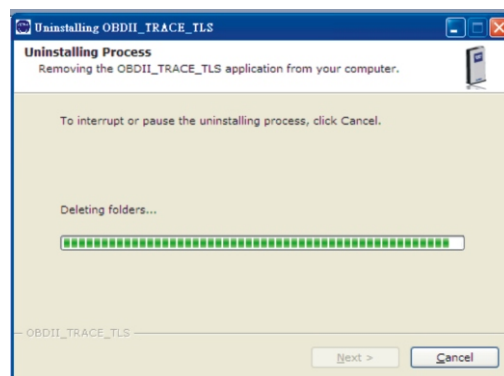


If you can't see the window pop up, please execute “OBD_TRACE_setup.exe” from CD-ROM drive to install

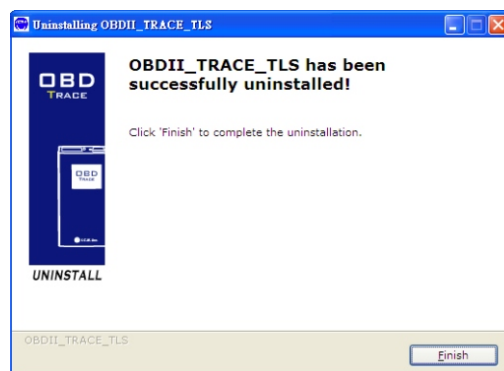
4. When a window pops up and says "Uninstalling OBDII_TRACE_TLS", please click "Next"



5. Waiting for few seconds.



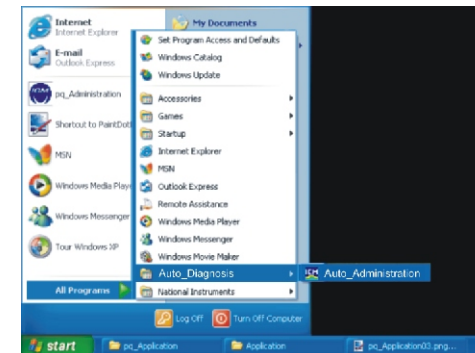
6. **CFM (Confirm)**
If the program has disappeared, please check "Add or Remove Programs" in the "Control Panel" again. If the program disappeared, it means the software was removed.



11. Administration Program

- Please connect your Diagnostic Interface with your PC and the car, and make sure that the power supply light of the interface is on.

- To start the software from "Start Menu"→
"All Programs"→
"Auto_Diagnosis"→
"Auto_Administration"

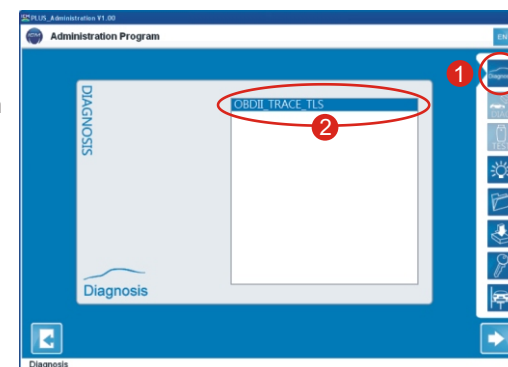


Mark Explanation

	Back		Language Change
	Forward/Enter		Information: To list the detail of your interface
	Exit		Diagnosing

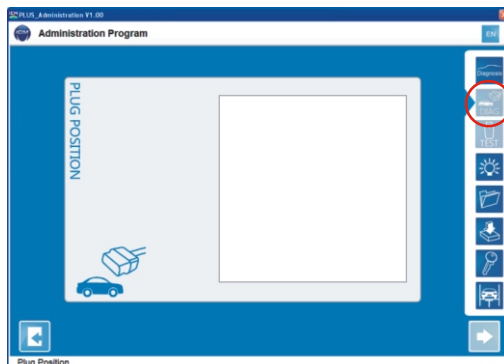
1. Diagnosis

Please follow the sequence on this screenshot to click for diagnosis access.



2. Plug Position

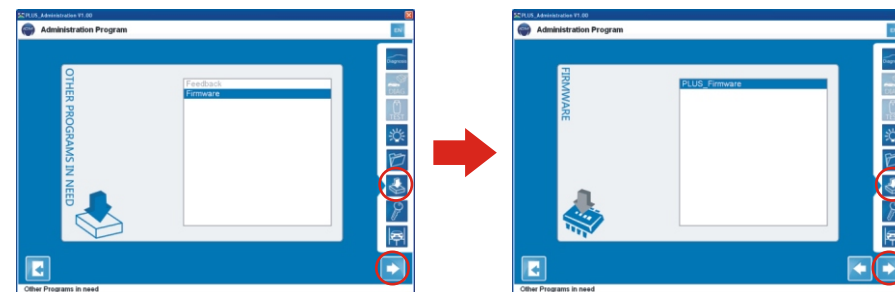
Direct the plug position as in the picture.



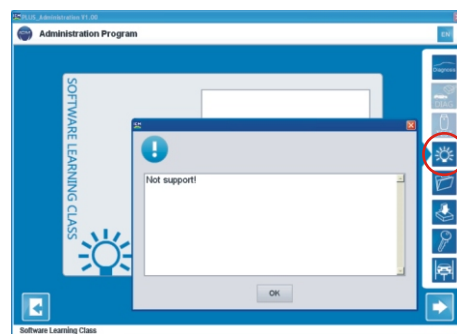
5. Other Programs – Shortcut (Firmware and Feedback included)

Firmware -

To make this shortcut valid, please confirm that you have finished its installation from its diagnostic software CD.

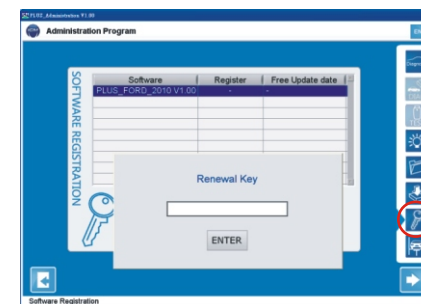


3. Software Learning Class - Shortcut



6. Software Registration

To reactivate your license of diagnostic software, for example: change a new PC or laptop.



4. Document - Shortcut

For Example:
User Manual: Choose "User Manual" and click .



7. Form Title Setting

This function allows you to customize your company info on the printed report of short test.

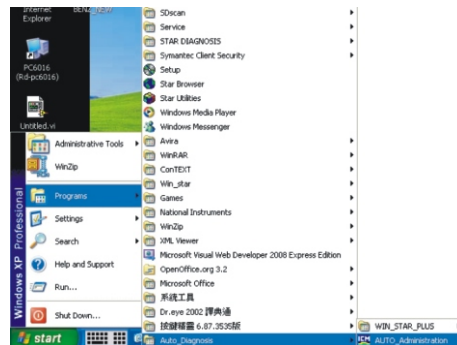


12. Software Registration

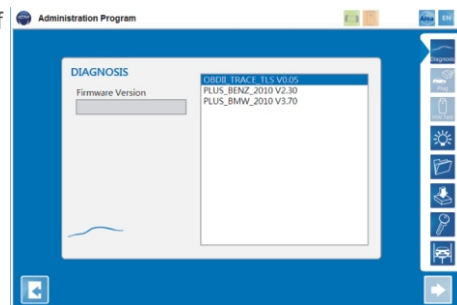
1. Please connect your WIN-STAR PLUS Diagnostic Interface with your PC and the car, and make sure that the power supply light of the interface is on.

2. Status I: The first time to use the Diagnostic Software on this PC.

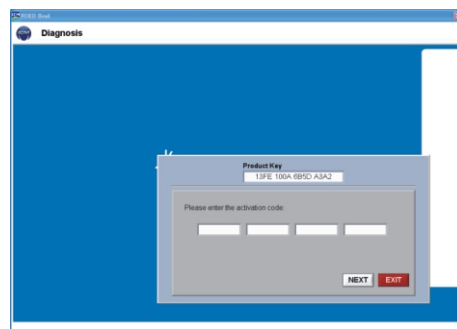
- 2-1. "Start Menu" →
"Programs" →
"Auto_Diagnosis" →
"AUTO_Administration".



- 2-2. Choose the diagnostic software of the vehicle make you need.



- 2-3. The Product Key with 16 alphanumeric codes will be displayed automatically (as in the picture). Please write down this Product Key and click "NEXT" button. Please get its activation code from www.icm.com.tw.
Note: All letters must be capital.

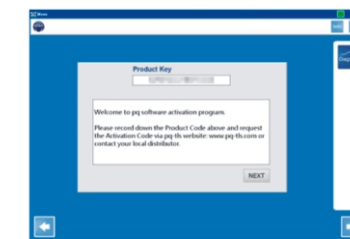


- 2-4. Please visit our website (www.icm.com.tw) → "Registration" → "English"

- Step 1: Please fill in your Product Key (16 alphanumeric codes) and click "OK".

Software Registration Center

Step 1: Please fill in your "Product Key"
Step 2: Registration
Step 3: Registration finish



Please fill in your Product Key (16 codes) OK

Software Registration Center

Step 1: Please fill in your "Product Key"
Step 2: Registration
Step 3: Registration finish

Product Key 3A435B4C313ED10

Thanks for your support! Please fill in your contact below clearly to get "Activation Code". Your personal info will help I.C.M. keep serving you with the related news. We won't reveal user basic info to other parties.

Personal Information

Name

Phone NO.

Country

E-mail

- Step 3. Registration Finish
This screen will display your Activation Code, the software you purchased, and important notes.

Please fill in this activation code (28 alphanumeric codes) back to software window and click "NEXT" button.

Note:
All letters must be capital.

Software Registration Center

Step 1: Please fill in your "Product Key"
Step 2: Registration
Step 3: Registration finish

Congratulations for accomplishing registration! I.C.M. appreciates your support. Your satisfaction is our growing power.

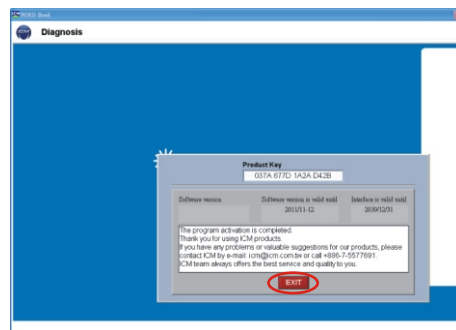
Product Key 3A435B4C313ED10

Please enter the activation code:

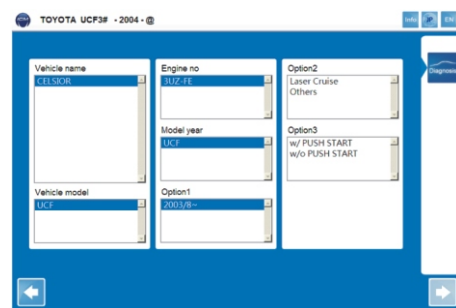
Activation Code: 3A435B4C313ED103A435B4C313ED103A435B4C313ED10

1. Activation code has total 28 codes with English capital letters and figures.
2. When you are executing pq, you are required to fill in the activation code.
3. The activation code is asked to fill in only one time.

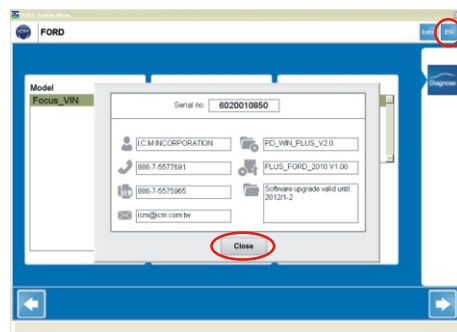
2-5. When the activation code is correct, it will display the software version and valid date of software update. Meanwhile, you are allowed to use the diagnostic functions.



2-6. You will see the car menu.



2-7. Click "Info" button on your upper right side, and the detail of your interface will also be listed. Click "Close" to return to the car menu.

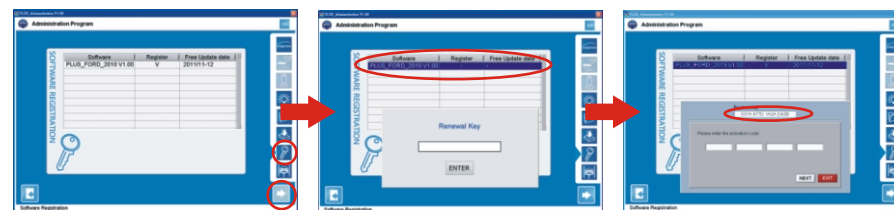


3. Status II:

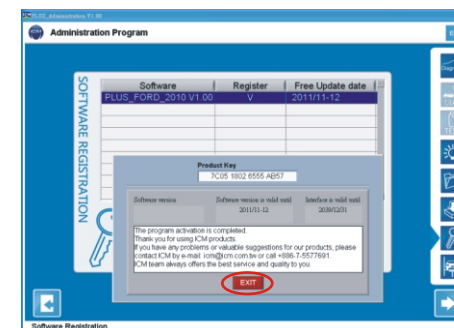
To reactivate your license of diagnostic software; for example: annual software subscription renewal.

3-1. Please follow No.2-1 of "Software Registration" ->. Choose " " and click " ".

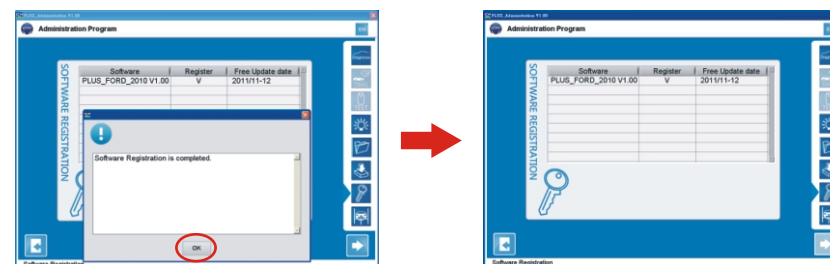
When you execute " ", the Renewal Key window will pop up -> To Select the Software -> Please input "5577691" and new Product Key (16 alphanumeric codes) will appear. Please follow No. 2-3 of "Software Registration" to finish the registration.




3-2. When the activation code is correct, it will display the software version and valid date of software update. Click "EXIT".



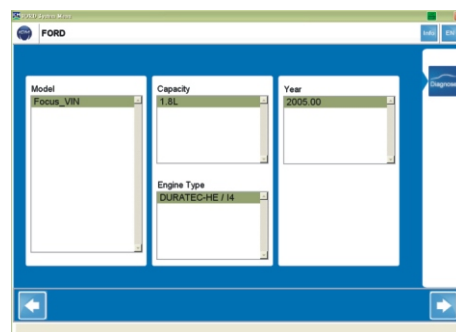
3-3. It will display that the registration is completed. Meanwhile, you are allowed to use the diagnostic functions. Click "OK".



- 3-4.** Choose "DIAGNOSIS" and click , the detail of your interface will be listed. Click "Close".



- 3-5.** You will see the car menu.

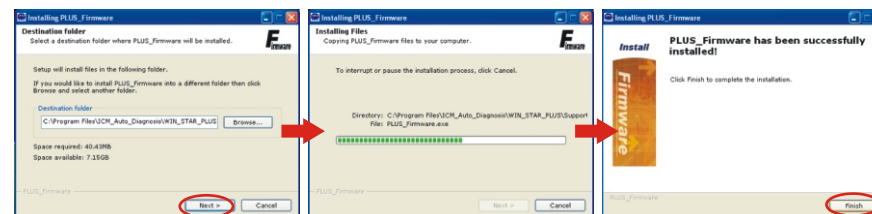


After replacing your computer (Laptop or Desktop):
After installing WIN-STAR PLUS program, you need to connect the interface and the car to request the activation code one more time. (The WIN-STAR PLUS program in the original computer will not be activated any more.)

13. Hardware Upgrade

1. Pre-installation for Hardware Upgrade

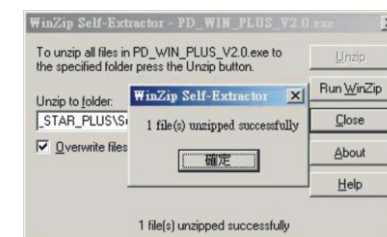
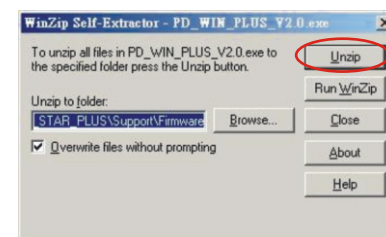
- 1-1. Firmware Upgrade Tool-
Program Download:** From your Diagnostic Software CD or www.icm.com.tw → Technical Support → Choose interface → Firmware → Firmware Upgrade Tool
✳ **Please confirm that you have installed this tool.**



- 1-2. Firmware Upgrade File -
Program Download:** From www.icm.com.tw → Technical Support
Firmware → Firmware Version → to find the latest file format

Please download it to your desktop as like PD_Vx.x.exe.

Unzip: Please click this file on your desktop and follow its default path to unzip it



✳ **To change its default path is NOT ALLOWED.**

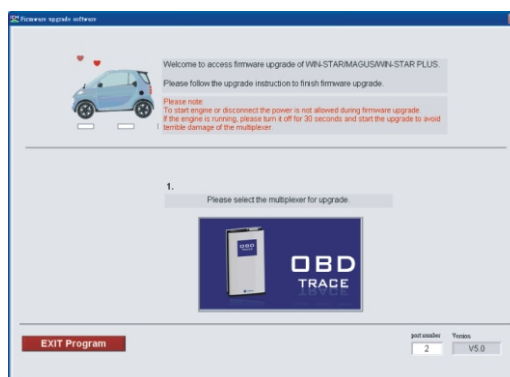
2. To start hardware upgrade

Start Firmware upgrade from the desktop
 "Start Menu" → "Programs" → "Auto_Diagnosis" → "Auto_Administration" →
 "OTHER PROGRAM IN NEED" → "Firmware"

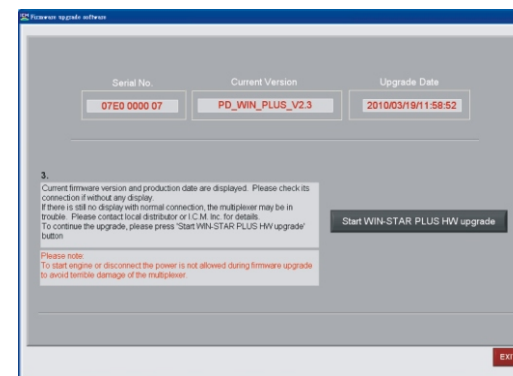


3. Connect multiplexer with PC and OBDII diagnosis cable.

4. Please click the multiplexer picture to start next step.

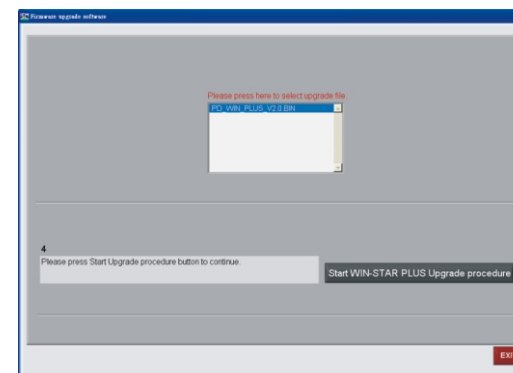


5. After confirming the serial no. and the current version is correct, please click "Start HW upgrade".

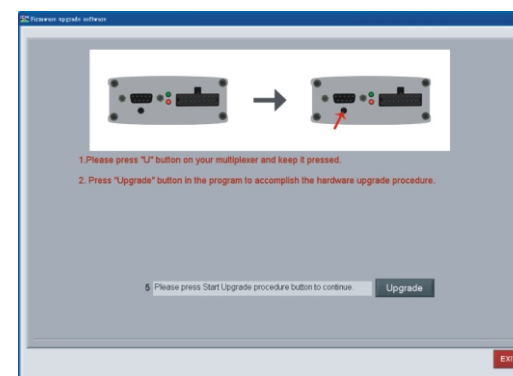


6. Choose the version, and then click "Start Upgrade procedure".

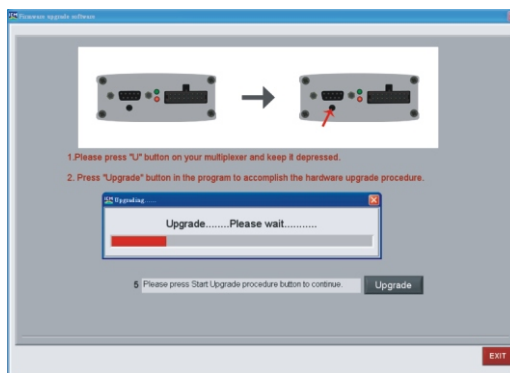
⚠ Do not close the window or interrupt power on upgrade procedure to avoid any multiplexer damage.



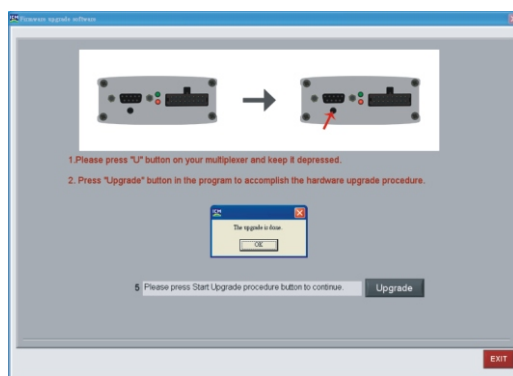
7. Please press the "U" button on the multiplexer and black keep it pressed. Then click "Upgrade" on the window.



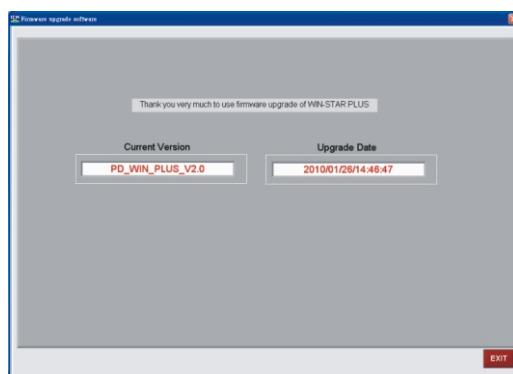
- 8.** When the Upgrade window pops up, please release the black button and wait for few minutes.



- 9.** Click "OK" to complete upgrade.



- 10.** Then click "Exit" and leave the program.



14. Warranty Policy

1. Warranty Introduction

The term "Product" shall mean OBD TRACE.

I. C. M. Inc. warrants and tests the Product to be free from defects in material and workmanship and to conform to published specifications. During the warranty period, should the Product fail under normal use in the recommended environment due to improper workmanship or materials, I. C. M. Inc. will repair the Product or replace it with a comparable one.

I. C. M. Inc. will inspect the Product and make a decision regarding repair or replacement.

I. C. M. Inc. reserves the right to provide a functional equivalent or refurbished replacement Product.

2. Duration of Warranty

One-Year Warranty:

The Product is covered by this warranty for a period of one year from the date of original purchase.

I. C. M. Inc. reserves the right to determine whether repair or replacement is suitable upon inspection of the Product. The decision made by I. C. M. Inc. whether to repair or replace the Product will be final.

3. Warranty Claim Requirements

When sending a defective Product to I. C. M. Inc., it is required that customers provide prepaid freight and insurance. Shipped Products must be properly packaged to prevent damage during transit. For Products purchased from I. C. M. Inc. distributor or reseller, customers must contact the seller for replacement or repair.

4. Replacement and Repair

Beyond warranty period - I. C. M. Inc. will repair a defective Product beyond warranty; however, the customer will be charged for the cost of labor and replaced parts if the defective Product was returned beyond the applicable warranty period.

5 ■ Exceptions of Warranty

This warranty does not apply to Product failure due to accident, abuse, mishandling, improper installation, and alteration, acts of nature, improper usage, or problems with electrical power. In addition, opening or tampering with the Product casing, or any physical damage, abuse or alteration to the Product's surface will also void the Product warranty.

This warranty only applies to the Product itself. I. C. M. Inc. will not be liable for damages resulting from a third party device that causes the Product to fail.

Please note that should the Product defect be caused by any of the following factors, I. C. M. Inc. is not responsible:

- a. Mishandling during shipment.
- b. Misuse, repair or modification by users.
- c. Not following the instructions in the user manual correctly.

**“We never succeed until you succeed”
It's the core of our Customer Satisfaction.
I. C. M. Inc. team thank you for choosing this
Product and for being our valued customer!**