

Hi-Speed USB Portable Flash Disk

End-User's Manual Guide

*For AP v1180 (All Chip Versions)
For Windows 98/ME/2000/XP*

Version 1.2 (09/15/2003)

Contents

Contents	1
Introduction	1
Features & Specifications	2
System Requirements	2
Using the Hi-Speed USB Flash Disk.....	3
Generic USB Hub Driver Installation	6
USB Flash Disk Utility Program.....	7
Creating a Bootable USB Flash Disk	14
Uninstalling the USB Flash Disk Utility.....	15
Disclaimer	15

Introduction

Congratulations on your purchase of this Hi-Speed USB Portable Flash Disk! This Hi-Speed USB Flash Disk is your friendly, secure, and lightweight removable mass storage device disk. It plugs thru the USB port so your computer will quickly detect and configure the disk without needing to restart the computer. You read, write, copy and delete files just the same way as you use a disk drive. And since it is a large capacity disk, you can also play MP3 files, run program applications or play videos directly from the disk.

This Hi-Speed USB Flash Disk is so light and compact that you can carry it with you anywhere. It comes in various large storage capacities starting at 32MByte up to 2GByte. It is so easy to install that you can actually use it to replace your floppy diskettes, ZIP drives, MO drives, and even CD-RW discs. And because it uses durable solid-state storage flash memory, it has no moving parts inside making it shock resistant and longer to use.

This Hi-Speed USB Flash Disk also provides great flexibility and data security with disk partitioning and password security features. The USB Flash Disk Utility allows you to easily create and configure one or two-partition drives – an open partition drive with no password and a secured partition drive with password access option. The secured partition drive allows you to place your important files in it and protect it from being accessed by setting a password to hide the drive. Any access to this secured partition drive then would require first to run the security utility and enter the correct password to unlock the drive.

Features & Specifications

- Smart and secure removable data storage for business and personal use
- Full Compliance with the Universal Serial Bus Specification v2.0 and v1.1
- Offers 32MB, 64MB, 128MB, 256MB, 512MB, 1GB and 2GB capacities
- Data Write/Delete Protect Switch
- Hi-Speed Read Performance of up to over 5MBytes/sec
- Hi-Speed Write Performance of up to over 3MBytes/sec (D Version only)
- Mass Storage Device class compatible so no driver needed in Windows ME, 2000, XP, Mac 9.1 or above. Includes manufacturer driver for Windows 98.
- USB Flash Disk Utility Program for security and partitioning functions (No additional drivers needed)
- Bus Powered – no separate power supply or battery required
- State-of-the-art NAND Flash Memories
- Shock resistant, noise-free and longer data retention
- Advanced power management mechanism
- Dimensions L x W x H: 65x21x9.5 (mm)
- Weight: 6.33grams (approximate)

System Requirements

- Windows 98, ME, 2000, XP, Mac OS 9.1 or above
- AMD or Intel Pentium 133MHz or better based computer
- USB 1.1, USB 2.0 or higher port

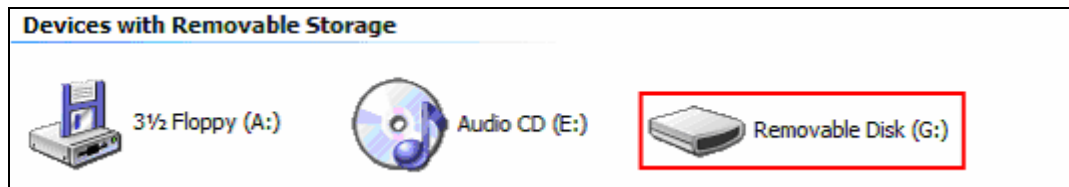
Using the Hi-Speed USB Flash Disk

To use the Hi-Speed USB Flash Disk, you simply plug it into your computer's USB port. Windows ME, 2000, XP and above versions all support the Microsoft USB Mass Storage driver needed to detect and run the device. However, if you have Windows 98, you will need to run the USB Flash Disk Utility Setup that includes the Win98 driver. The USB Flash Disk Utility program allows you to make use of the security and partitioning features of the Hi-Speed USB Flash Disk. Refer to the section of this manual for installing the USB Flash Disk Utility program.

If you want to know more about USB, you can go to <http://www.usb.org/faq/>.

Plugging the USB Flash Disk

Once you plug in your Hi-Speed USB Flash Disk, Windows will assign a drive letter to the device and will usually designate it as a Removable Disk. You work with the drive just like another disk drive or floppy diskette. Click My Computer to see all the available drives in your computer.

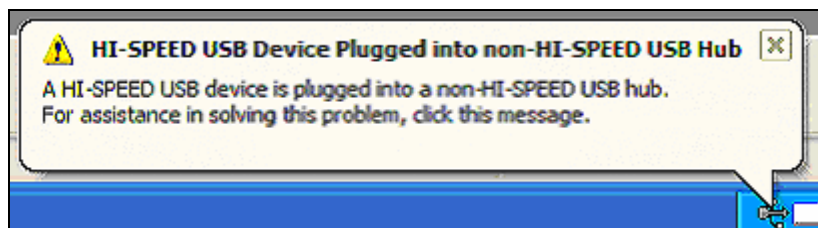


If Windows prompt you for the Generic USB Hub driver when you plug in the device for the first time in a Hi-Speed USB port, you simply direct the USB host driver location to the C:\Windows\System32\Drivers directory.

To make sure if the device is properly installed, click Start-Control Panel-System-Device Manager and go to the Universal Serial Bus Controllers. Check if there is USB Mass Storage Device and Generic USB Hub installed.



This Hi-Speed USB Flash Disk is a Hi-Speed USB 2.0 compliant device and is recommended that you plug it into a Hi-Speed USB 2.0 port. Whenever you plug the disk into a non-Hi-Speed USB port, Windows will show an alert message at the taskbar telling you that it is plugged into a non-Hi-Speed USB hub. You can still continue to use the disk but it will run at a reduced speed.



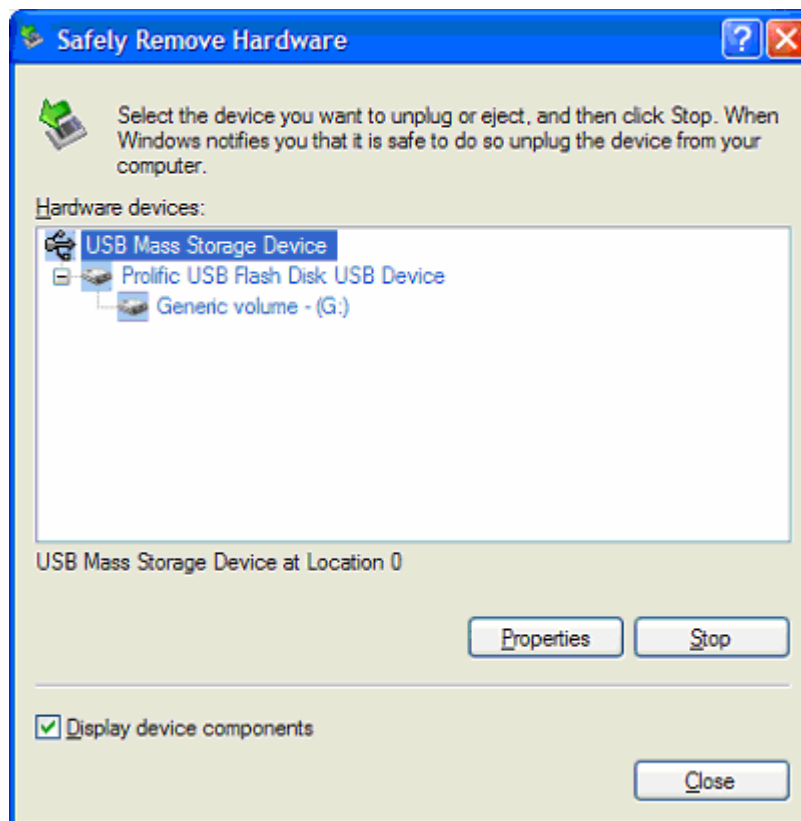
Unplugging the USB Flash Disk

To properly unplug the USB Flash Disk, you must double-click on the Safely Remove Hardware icon found on the right side of the taskbar to stop the device.



It is highly advisable that you safely remove the device first before you unplug especially after copying files since Windows includes write caching features. Safely removing the device ensures that files are properly in place before Windows allows you to unplug the device.

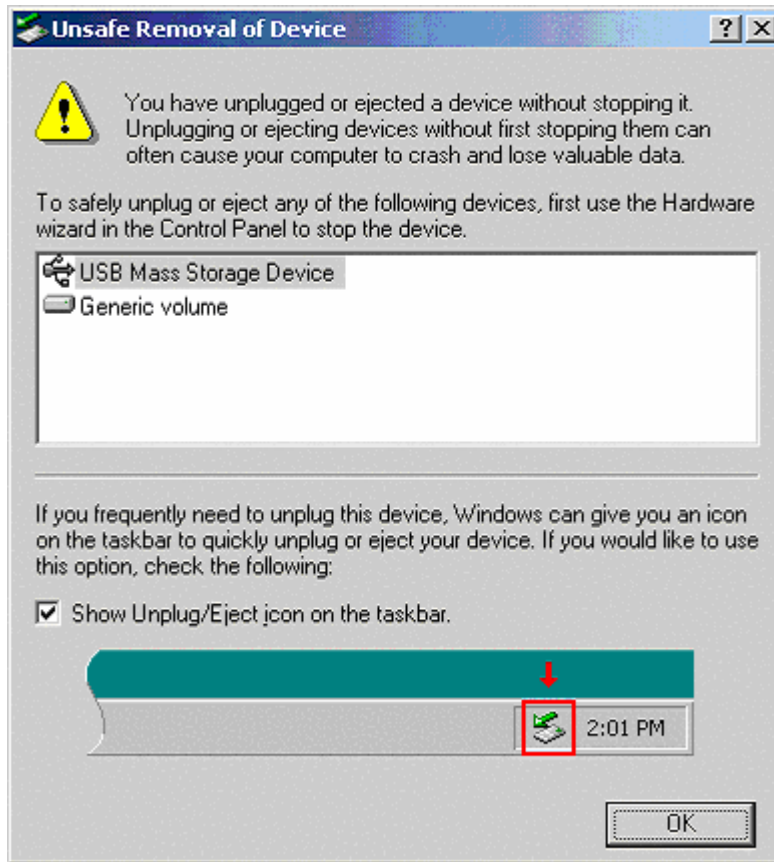
Click on the USB Mass Storage Devices and click the Stop button to safely remove the device. You can also click first on the Display device components to show the detailed information of the USB Mass Storage Device.



Once you have safely removed the device, Windows will then show that the USB Mass Storage Device can now be safely removed. You can then unplug the disk from the USB port.



In Windows 2000 or ME, whenever you unplug the disk without safely removing it, Windows will show you a warning message that you unplug a device without stopping it and may cause your computer to crash or lose valuable data. Do not also unplug the USB Flash disk when the read/write LED of the disk is still on.



Do not unplug or remove the device if the read/write LED of the Hi-Speed USB Flash Disk is on or blinking. Wait for the LED to turn off before you safely remove the device.

Write Protect Switch

The USB Flash Disk also comes with a user write-protect switch. This switch works very much like the floppy disk write protect switch. Turn this switch if you want to prevent the USB Flash Disk from being written.



You must first safely remove the disk before you turn on or turn off the write-protect switch. It is not recommended to enable or disable the write protect switch while the disk is still plugged into the port.

Generic USB Hub Driver Installation

The Hi-Speed USB Flash Disk integrates an embedded generic USB hub that may cause Windows to prompt for a first-time hub driver installation when plug in a USB 2.0 port.

1. If you plug the USB Flash Disk in the Hi-Speed USB 2.0 port for the first time, Windows will first detect the Generic USB Hub on USB 2.0 Bus and may prompt you to install a driver. You would only need to use the existing USB host driver in Windows. Click Next to continue.



2. Click let Windows search for the new driver. If Windows cannot find the driver, you can specify the driver location at C:\Windows\System32\Drivers. After Windows detect the USB Host driver, it will inform you that it has finished installing the software for the new hardware device.
3. Windows will then automatically detect the Hi-Speed USB Mass Storage Device and will automatically install the drivers for you. To check if the device has been installed properly, click Start-Control Panel-System-Device Manager and check for the Hi-Speed USB 2.0 Mass Storage Device.



USB Flash Disk Utility Program

This section provides you information on how to run the USB Flash Disk Utility program. The Utility program allows you to set the password and device name as well as disk format, partition, and boot setup features.

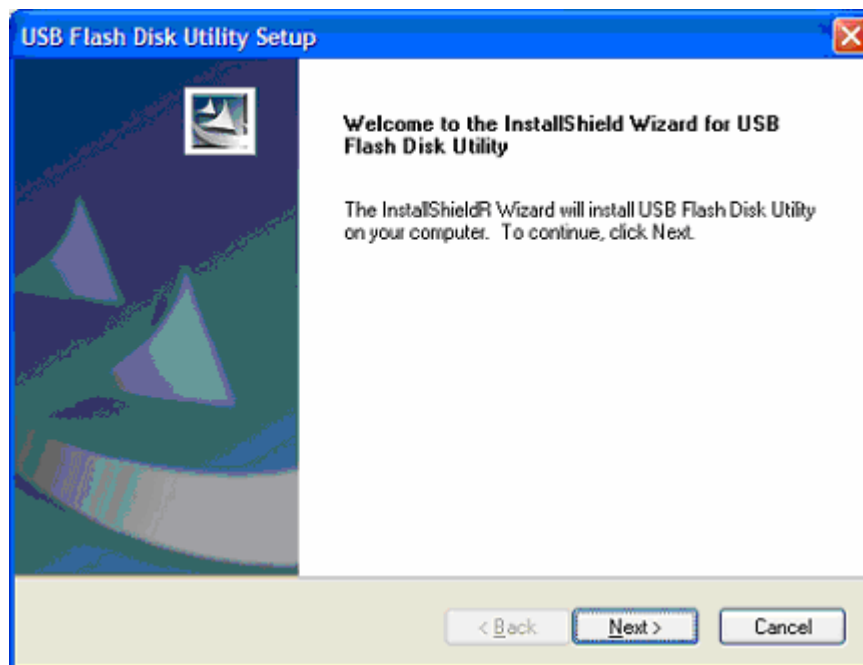


If you are using Windows 98, it is required that you install the Win98 USB mass storage driver. You must run the USB Flash Disk Utility Setup program (v1180 and above) that includes the Win98 driver installation. Or you can contact your dealer for a separate Win98 driver.

Installing the USB Flash Disk Utility

Follow the steps below to install the USB Flash Disk Utility program:

1. Run the Setup program included together with your USB Flash Disk utility CD.
2. The InstallShield Wizard will then start and will prompt you if you want to start installing the USB Flash Disk Utility. Click Next to continue.



3. InstallShield Wizard will then start to install and copy the needed files and programs into your computer. Click the Finish button when InstallShield Wizard prompts you that installation is complete.
4. When installation is complete, check if there is a program shortcut created on your desktop screen for the USB Flash Disk Utility program.



5. Check also your Program folder by clicking Start-Programs and see if there is a USB Flash Disk Utility program folder created. See next section on how to use the utility program.

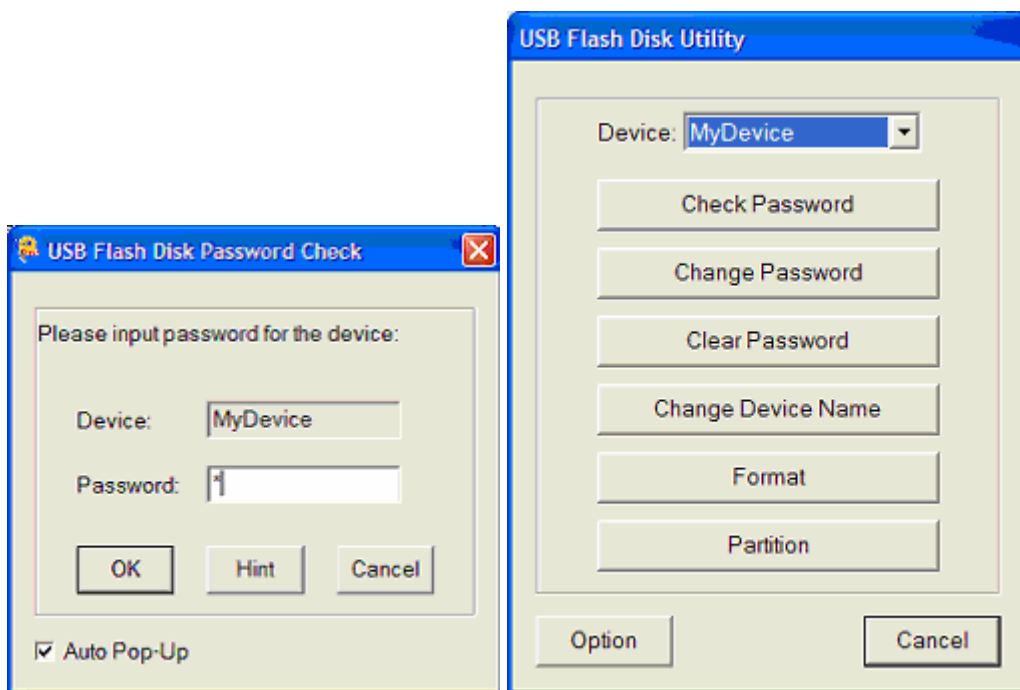
Running the USB Flash Disk Utility Program



The USB Flash Disk Utility program only runs if it detects the correct device. The program will not respond if it detects a different configured device even if it is also of the same manufacturer device product.

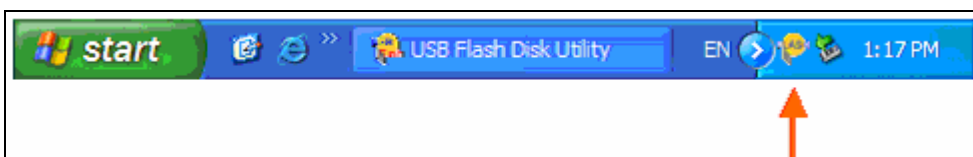
Follow the steps below to run the program:

1. In order to run the USB Flash Disk utility, it is required that you first plug-in the device and then double-click the program shortcut in the desktop screen. Otherwise, the program will not open if it cannot detect the proper device.
2. The USB Flash Disk Utility menu window will appear. The password features will only be enabled if you partition the device to two partition disks. If there is a password already set on the disk, the password check dialog box will first pop-up to prompt for the password before you can enter the main menu.



The Password Check dialog box will only pop-up if this option is enabled and when you plug-in the device and there is a password set inside. You can disable this auto pop-up function by clicking the Option button in the main menu of the utility program.

3. You will also see the USB Flash Disk utility icon on the right side of the taskbar every time you plug-in the device. You can also double-click this to open the utility. You can click on the Option button to disable the tray icon appearing on the taskbar when you plug in the device.



Check Password

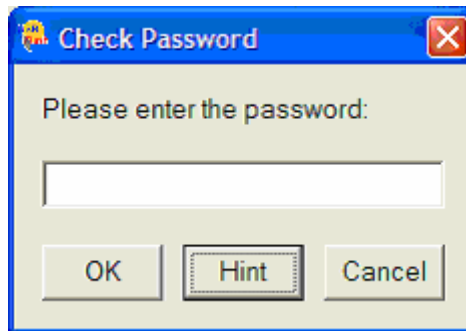
Check Password

This function allows you to verify the password of the Hi-Speed USB Flash Disk.



If there is only one partition disk, you will not be able to use the password buttons. This feature is only allowed for two partition disks and if you have set a password. Please refer to the Partition section of this manual.

1. On the Check Set Password dialog box, enter the correct password and click OK. Click on the Hint button to pop-up the password hint or reminder.

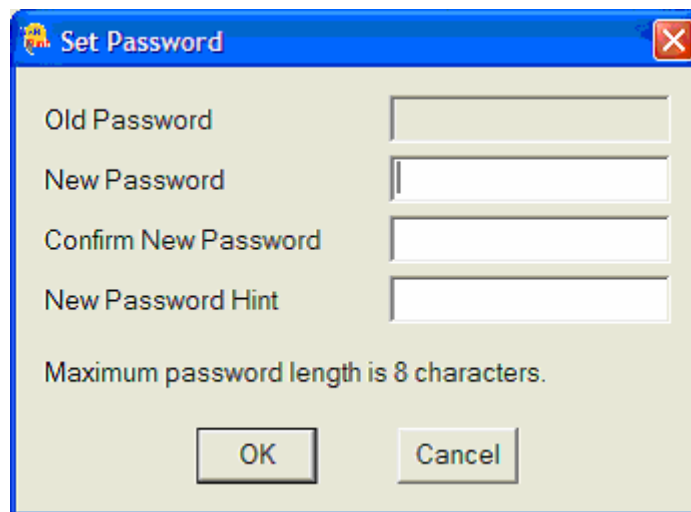


2. If the password is correct, the dialog box will closed automatically and return to the main menu. If the password is incorrect, a password incorrect dialog box will appear.

Set Password

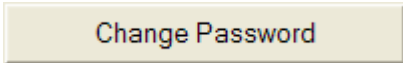
Set Password

This function allows you to set the password of your device. This button will only appear if you have a two-partition disk and do not have a password set yet. You can also set a password hint that will help you remember your password.

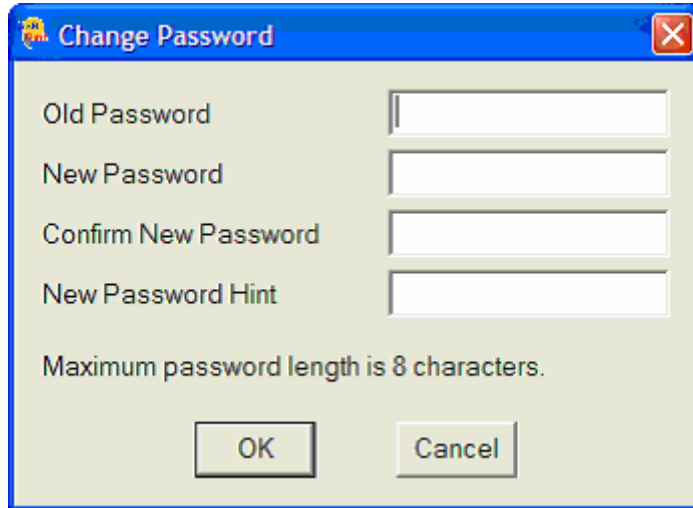


It is recommended that you only use English alphabet or numeric characters when entering your password.

Change Password

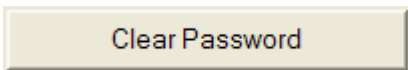


This function allows you to change the password and password hint of your device. It is the same like setting a password except you need first to enter the correct old/existing password.

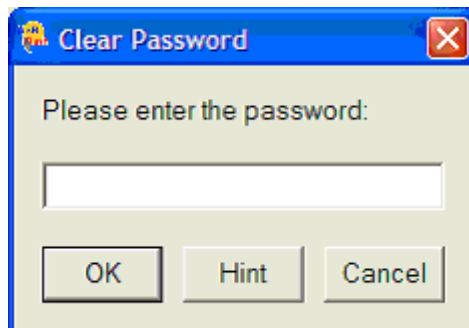


The Change button will only appear if you have a password set on the device. If there is no password, the Set Password button will appear.

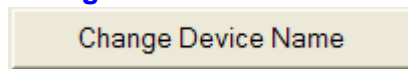
Clear Password



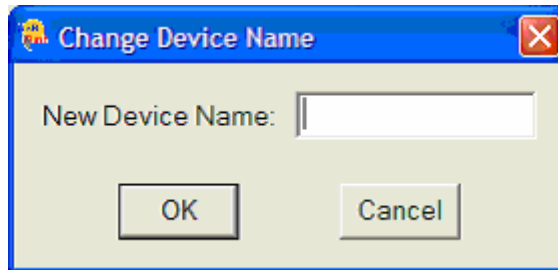
This function allows you to clear the password of your Hi-Speed USB Flash Disk. Just enter the old or existing password in the Clear Password dialog box. You can click the Hint button to show the password reminder. After you click OK and if the password you entered is correct, you will go back to the main menu and the password is already cleared. If the password you entered is incorrect, a password incorrect dialog box will appear.



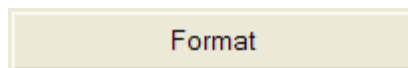
Change Device Name



This function allows you to change the device name of the Hi-Speed USB Flash Disk. The device name of the USB disk is displayed on the Device List of the utility main menu window. This is useful if you have more than one Hi-Speed USB Flash Disk inserted and want to be able to identify them all. Make sure to use different device name if you are using two or more devices at the same time.

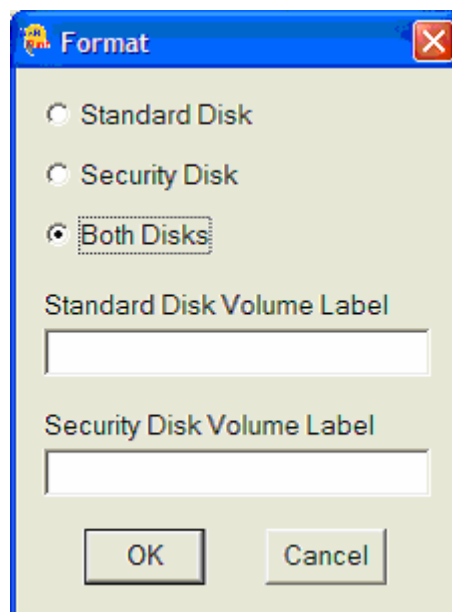


Format



This allows you to format and label the partition disks. Follow these steps:

1. Click on **Format** and enter the correct password if prompted.
2. Now depending if the current partition is one or two, the Format dialog box window will show differently.
3. If you have two partitions, you will see the dialog box below. Click on which partition (Standard Disk or Security Disk) you want to format. If you want to format both partitions, just click Both Disks. You can also enter the disk volume label if you prefer. Then click **OK**.



4. If you have one partition, you will see the dialog box below. Only the Standard Disk option is available. Enter the disk volume label if you prefer. Then click **OK** to start formatting the disk.



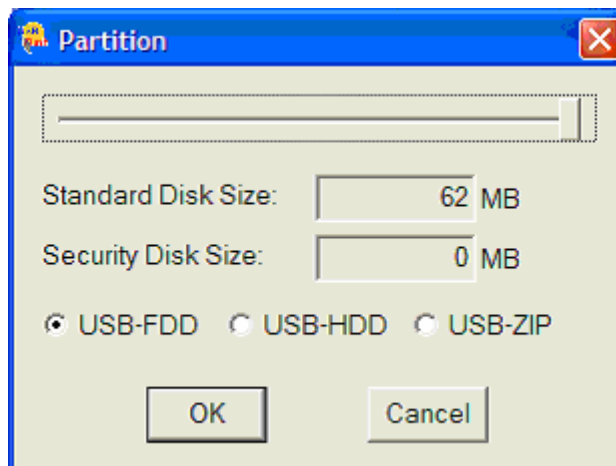
5. When finished, a window message will appear telling you that format is successful. You would need to unplug and replug the device. The program will automatically remove the device after format so you just unplug the device.



Partition



This function allows you to define the partitions you want and how big the size of each partition will be.



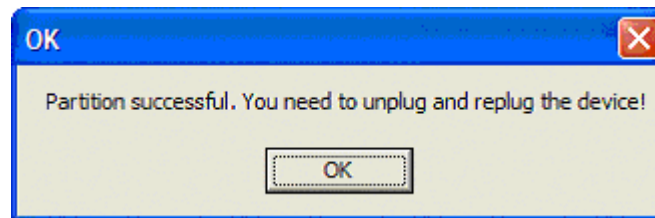
1. Click Partition from the Utility menu. You will see the Partition dialog box. Move the slide bar to adjust the partition size for standard and security disk. The security disk partition can be protected by password and is hidden until you activate the USB Flash Disk Utility program and enter the correct password.

You can also select if you want your device to support USB-FDD, USB-ZIP or USB-HDD boot emulation. You will need to check your PC BIOS on what USB boot device type it can support or call your PC motherboard support center.

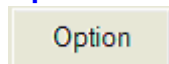


For two-partition disks, you must set a minimum standard disk size of 8MB. If you already set a password before running partition and you set a one partition disk, the password will automatically be erased.

2. Once you have decided how to partition your USB Flash disk, click Start to begin. A warning message will appear informing you that all data inside the disk will be erased. Click OK to continue. This process will also format the disk so you don't need to format the disk again. When finished, you must unplug and plug the device for the new partition to take effect.

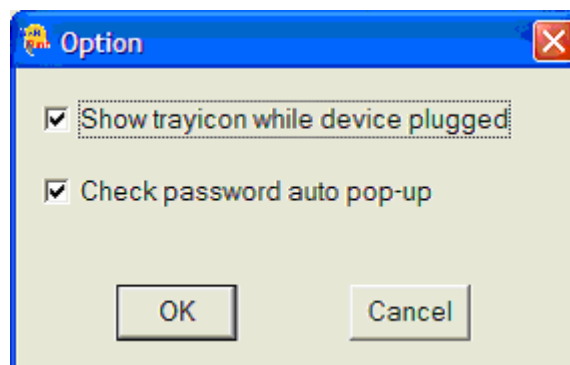


Option



This button allows you to set the options for the following:

- Showing the program icon on the Windows taskbar (system tray) whenever you plug-in the device.
- Auto pop-up the check password dialog box whenever you plug-in the device and there is a password set.



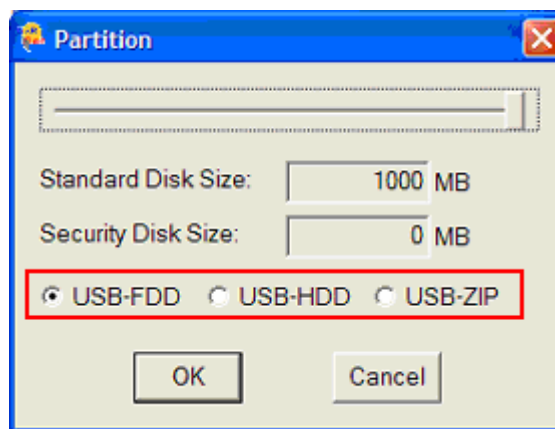
Creating a Bootable USB Flash Disk

In order to create a bootable USB Flash Disk, you would need Windows 98 or Windows ME to format the USB Flash Disk and run the copy system file function. You would also need to make sure first if the motherboard or computer you are using fully supports boot from USB device.

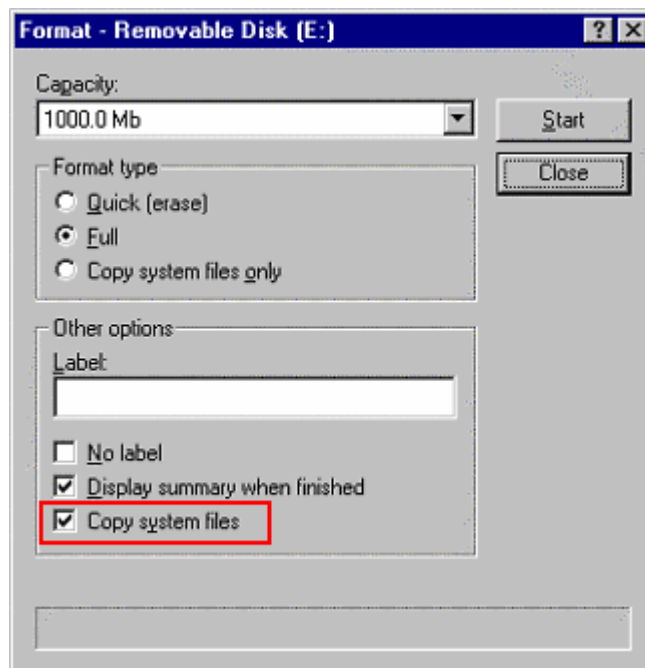


Windows 2000 and XP does not support copy system files so you cannot create a bootable USB Flash Disk in these operating systems. Also note that some motherboards or computer may not properly boot from USB.

1. Plug-in the device and run the USB Flash Disk Utility program.
2. Partition the device as one standard disk and select a boot emulation that your computer (system BIOS) supports. You can select to partition the standard disk as USB-FDD, USB-HDD, or USB-ZIP.



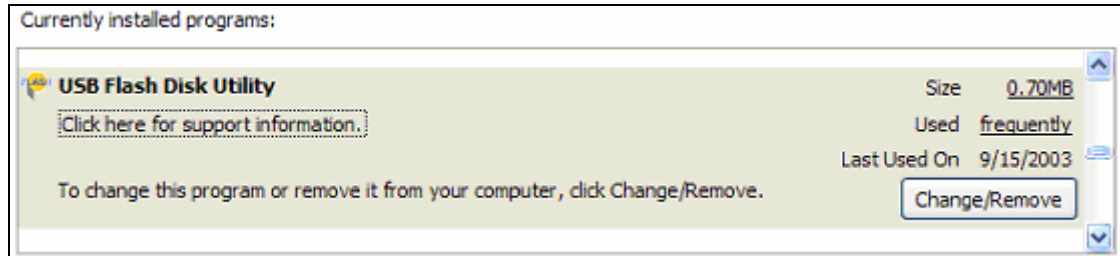
3. Replug the device and use Windows 98 or ME to format the drive. Make sure to also click the copy system files option so Windows will copy the needed DOS boot system files.



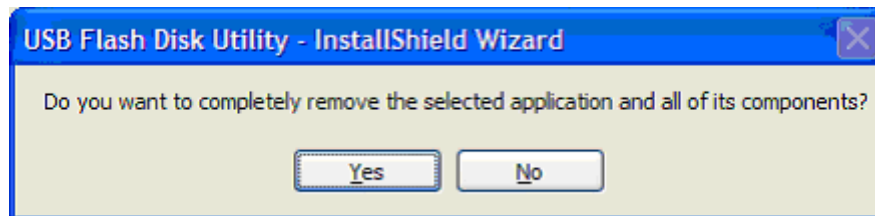
Uninstalling the USB Flash Disk Utility

To uninstall the USB Flash Disk Utility program:

1. Go to Control Panel and double-click on Add or Remove Programs.
2. Look for the USB Flash Disk Utility and click Change/Remove button.



3. Setup will prompt you whether you want to uninstall. Click OK to continue.



4. After Setup has completely uninstalled the utility program, it will prompt you that maintenance is complete. Windows may prompt you also to restart your computer. Click Yes to do so.

Disclaimer

All the information in this document is subject to change without prior notice. The manufacturer does not make any representations or any warranties (implied or otherwise) regarding the accuracy and completeness of this document and shall in no event be liable for any loss of profit or any other commercial damage, including but not limited to special, incidental, consequential, or other damages.

No part of this document may be reproduced or transmitted in any form by any means without the express written permission of the manufacturer.

All brand names and product names used in this document are trademarks or registered trademarks of their respective holders.