



Smart Power Drive SecurePRO User Manual

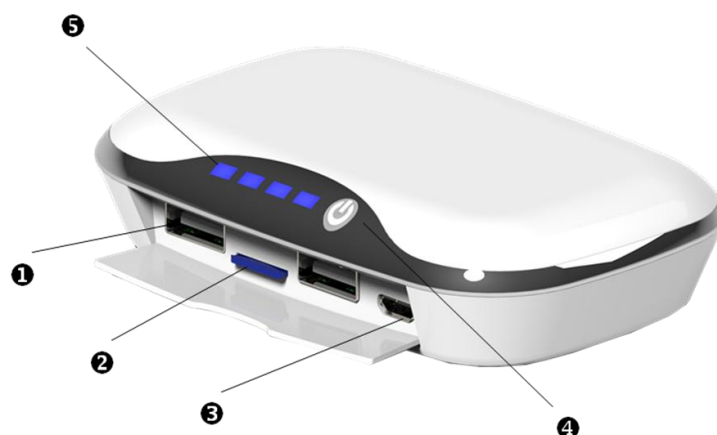
Version_010

Index

Getting to know Smart Power Drive SecurePRO.....	3
Use of Smart Power Drive SecurePRO	5
System Requirements	5
Connecting to PC/NB	5
Disconnecting from Mobile Phone Safely.....	5
Install Smart Power Drive SecurePRO App	7
Start Using Smart Power Drive SecurePRO.....	8
Main Screen	9
About & Help	10
File Encryption/Decryption	12
Encryption.....	12
Decryption	13
File Management.....	14
Single File Operation	14
Multiple File Operation (Local Storage).....	16
Multiple File Operation (External Storage).....	20
Limit on its uses	23
Troubleshooting.....	24

Getting to know Smart Power Drive

SecurePRO



1	Standard USB port	Connect to an Android phone for file transmission and charging.
2	Micro SD card slot	Supports a Micro SD card with capacity up to 32GB
3	Micro USB port	Connecting it with a cable at its Micro USB port to any PC/NB, USB charger, power bank USB port and any 5V output USB port to charge your Smart Power Drive
4	Power On/Off button	Power on: press and hold the button for 3 seconds Power off: press and hold the button for 3 seconds Flashlight on: press the button twice
5	Power LED indicator	Power on: Blue indicator 1 on→power 25% Blue indicator 1~2 on→power 50% Blue indicator 1~3 on→power 75% Blue indicator 1~4 on→power 100% Charging : Blue indicator 1 flashes→power under 25%

Blue indicator 1 on 、 Blue indicator 2 flashes→power

25%~50%

Blue indicator 1~2 on 、 Blue indicator 3 flashes→power

50%~75%

Blue indicator 1~3 on 、 Blue indicator 4 flashes→power

75%~99%

Fully charging : Blue indicator 1~4on

Use of Smart Power Drive SecurePRO

Connect the USB port with USB Male to Micro USB Male cable to Android phone and turn on the power. You can start to transfer the file between Smart Power Drive SecurePRO and phone and charge the phone.

Note: Smart Power Drive SecurePRO cannot be used as a PC card reader.



System Requirements

For Android devices

Android 4.0 or higher, and compliant with Android Open Accessory Protocol.

Connecting to PC/NB

The Smart Power Drive SecurePRO can be charged when it's connected to PC/NB.

Disconnecting from Mobile Phone Safely

To remove your Smart Power Drive SecurePRO from a mobile phone safely, tap the Return key in the Local Storage main screen (Figure 1) or the External Storage main screen (Figure 2) to confirm ejecting the device before removing your Smart Power Drive SecurePRO.

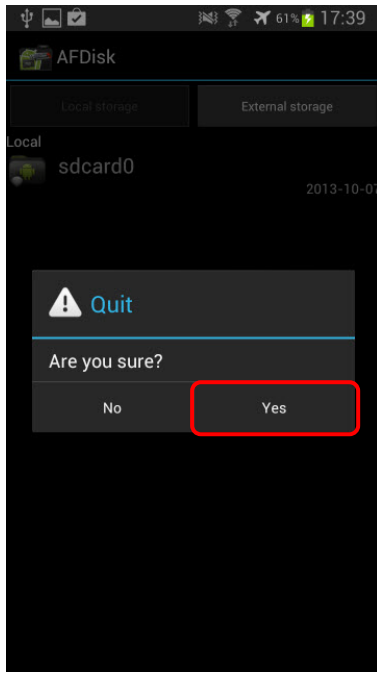


Figure 1

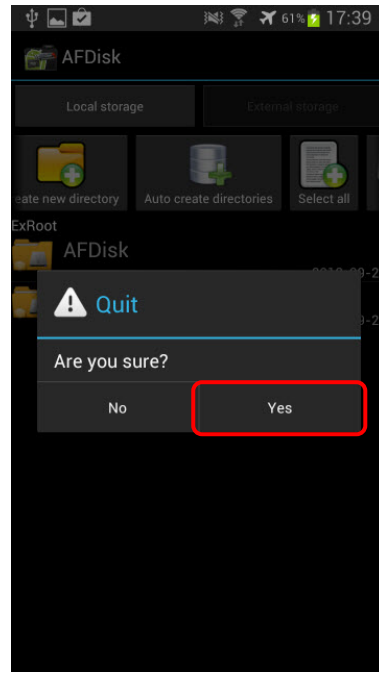
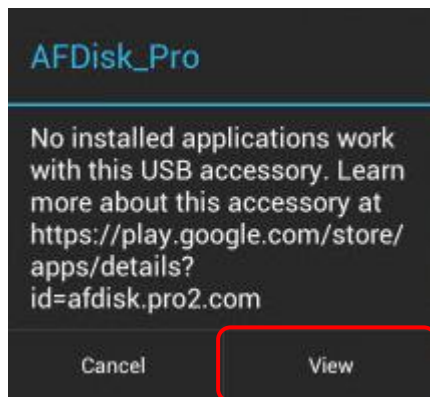


Figure 2

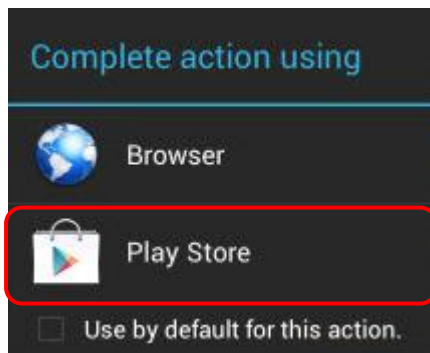
Install Smart Power Drive SecurePRO App

The AFDiskPRO App is exclusively designed for your Smart Power Drive SecurePRO. Your Smart Power Drive SecurePRO may guide you to the Play Store to download and install the APP. (Please ensure that your mobile phone is connected to a WiFi hot point or 3G network.)

1. Insert your Smart Power Drive SecurePRO and power it on. Tap on "View" after being prompted by the system.



2. Select "Play Store" and the Smart Power Drive SecurePRO APP screen displays.



3. Download and install the APP as prompted by the Play Store. The APP icon displays on desktop screen once the installation is completed.

You may search for "afdiskpro" directly from the Play Store for the APP download and installation.

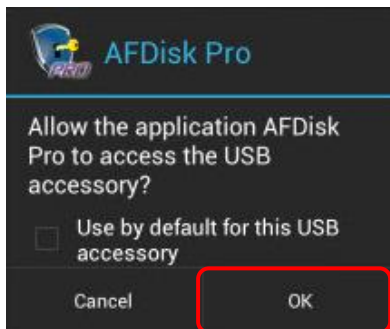


Start Using Smart Power Drive SecurePRO

Note:

1. Please insert the micro SD card before using it.
2. If Smart Power Drive SecurePRO cannot be identified or work normally, please restart your phone to find the situation.

1. Insert your Smart Power Drive SecurePRO then press the Power button to turn it on. Tap on "OK" as prompted by the system.



2. The APP's main screen (Figure 2) displays after the power on screen (Figure 1) is shown.



Figure 1

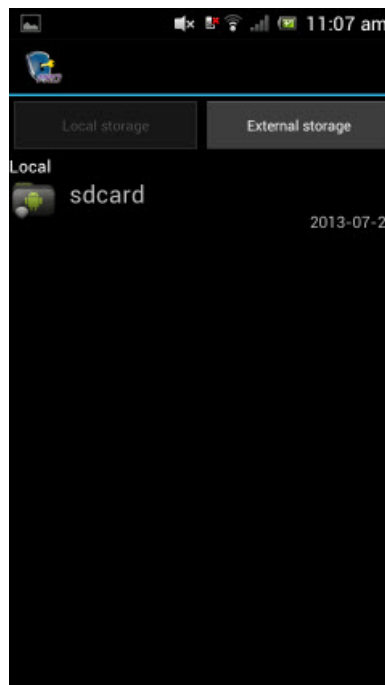


Figure 2

3. You may select to enter the Local Storage or External Storage menu to manage your files.

Smart Power Drive SecurePRO main screen

description

Main Screen

The APP's main screen displays the default folder of the “Local Storage” (Figure 1) which contains all the folders in your mobile phone's internal memory and the micro SD card (Figure 2).

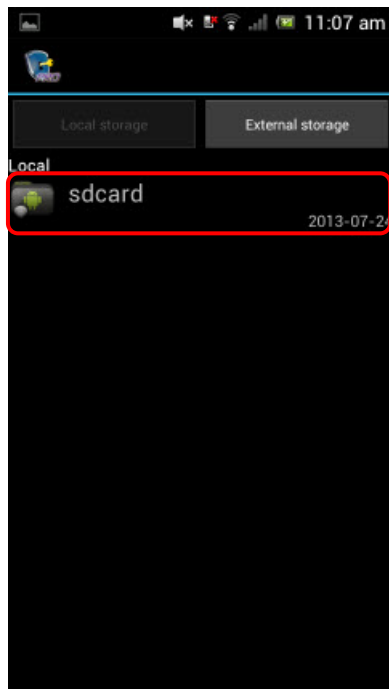


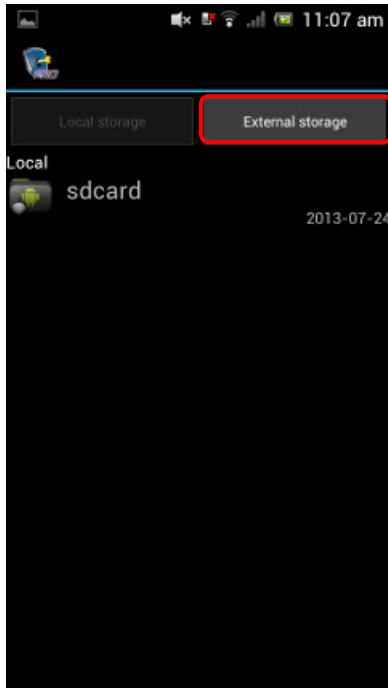
Figure 1



Figure 2

Tap on the “Local Storage” icon in the tool bar to switch to the Smart Power Drive SecurePRO's storage area.

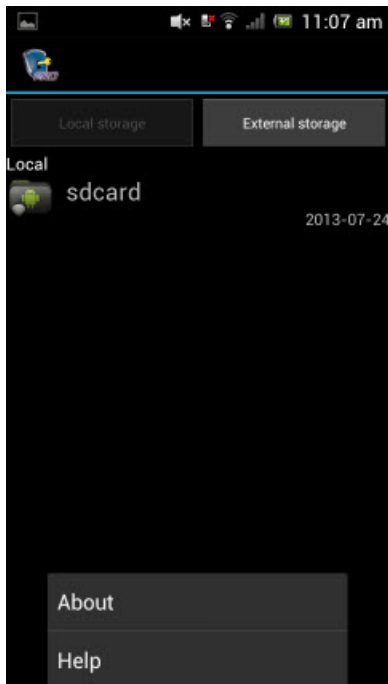
Note: The Smart Power Drive SecurePRO's External Storage icon does not appear if no micro SD card is inserted.



Smart Power Drive SecurePRO storage area

About & Help

Press your phone's function key to display the "About and Help" menu.



About: APP Version 、 Android OS Version 、 Phone Model and Firmware Version displays.



Help: Visit our online service website for operation instructions, FAQs and a list of compatible mobile phones.

Note: Please ensure that your mobile phone is connected to a WiFi hot point or 3G network.



File Encryption/Decryption

Your Smart Power Drive SecurePRO can encrypt and decrypt any folders/files contained in the Local Storage when connected to your mobile phone. Otherwise, it is unavailable as it does not appear in the APP list.

Tap on the file/folder icon to select the desired option (Figure 1). The circle of the file/folder is then checked and the “Encrypt” and “Decrypt” function icons display in the tool bar (Figure 2).

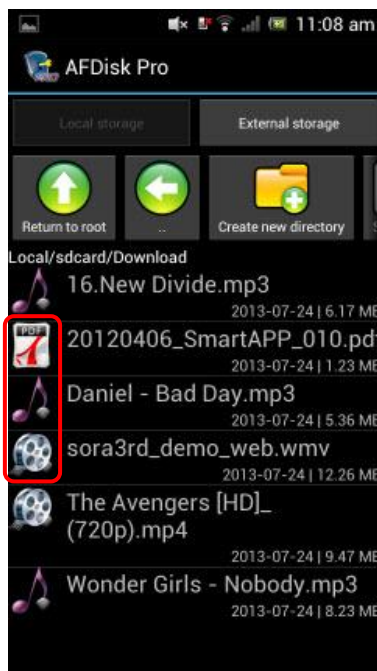


Figure 1

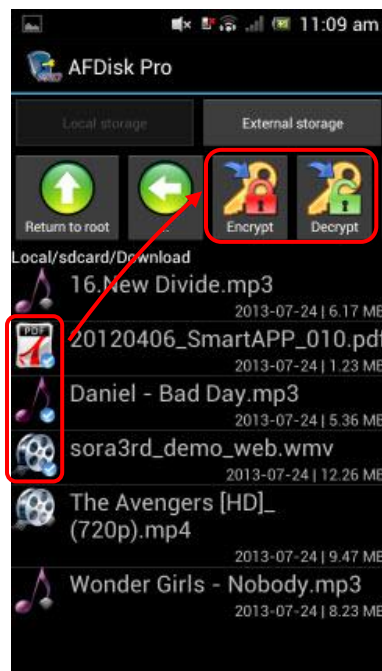




Figure 2

Encryption



Select the files to be encrypted, tap on  in the tool bar, type the password (composed of **5-32 case sensitive** alphanumeric characters) twice (Figure 1) to encrypt the selected files into another file with the Smart Power Drive SecurePRO



specific icon  and “.secpro” file (Figure 2). The source file is removed while the new file is denied to any APP (Figure 3).

Note: Please remember your password as there is no way to decrypt your file without it!

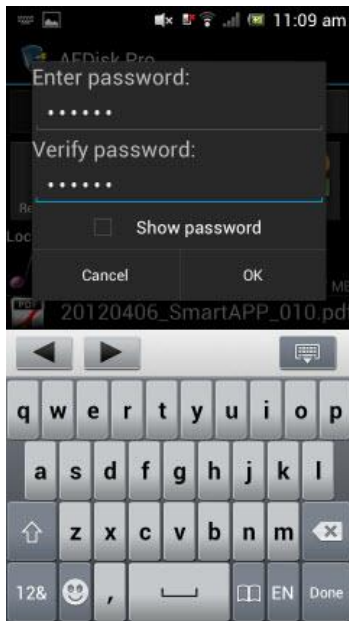


Figure 1

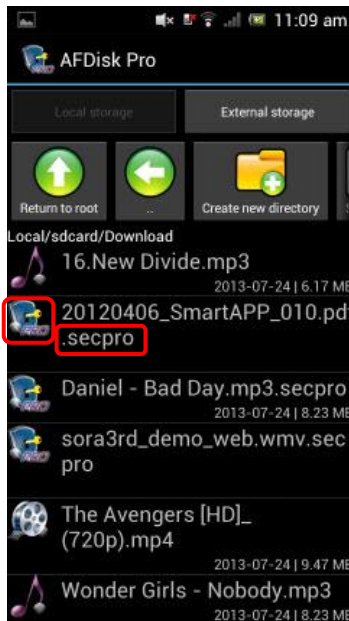


Figure 2

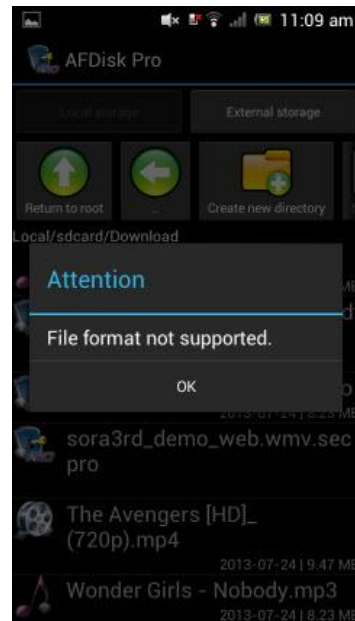



Figure 3

Decryption



Select the files to be decrypted, tap on  in the tool bar, type the original set of password (Please note that the password is **case sensitive**) to decrypt the selected files. The encrypted files will restore to original files after the files are decrypted.

Note: The decryption function has to be complied the following conditions, otherwise it is impossible to decrypt the file.

1. Use the Smart Power Drive SecurePRO APP to find out the encrypted file.
2. Insert Smart Power Drive SecurePRO to your phone.
3. Type the original set of password

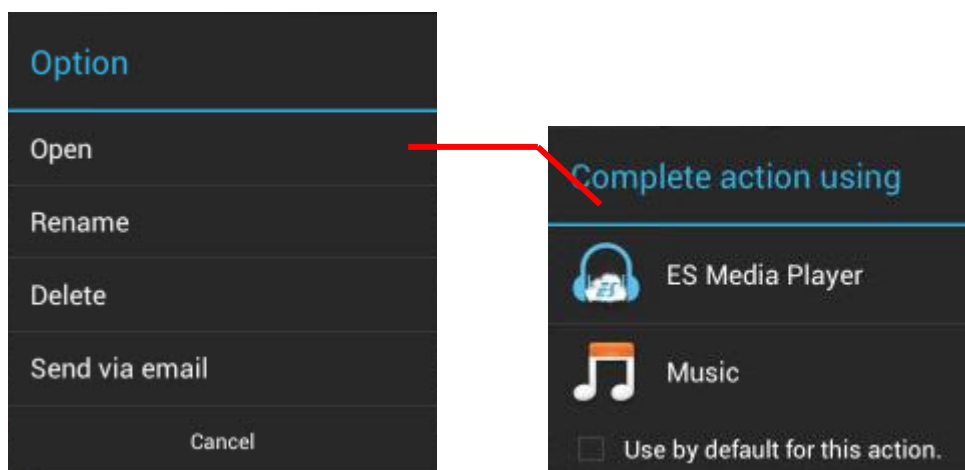
File Management

Single File Operation

The list of files in the storage is displayed once you enter the Local Storage/External Storage menu. Tap on and hold each file to open the function menu for 「Open」, 「Rename」, 「Delete」, and 「Send via mail」 or tap on 「Cancel」 to exit to the file list screen.

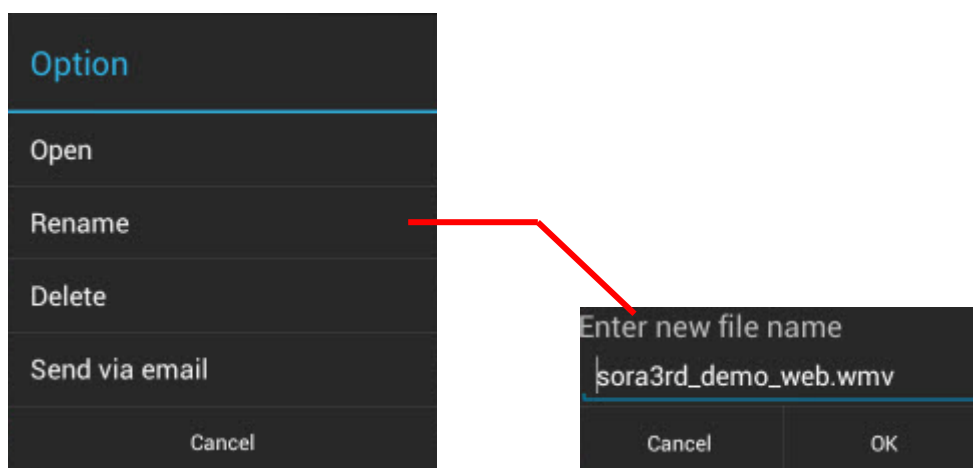
Open

Tap on 「Open」 to start the APP of the file.



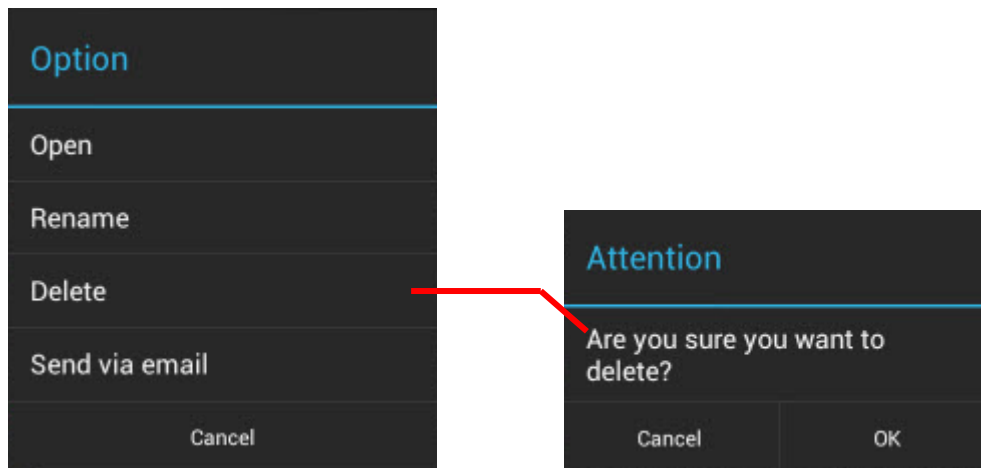
Rename

Tap on 「Rename」 to change file name.



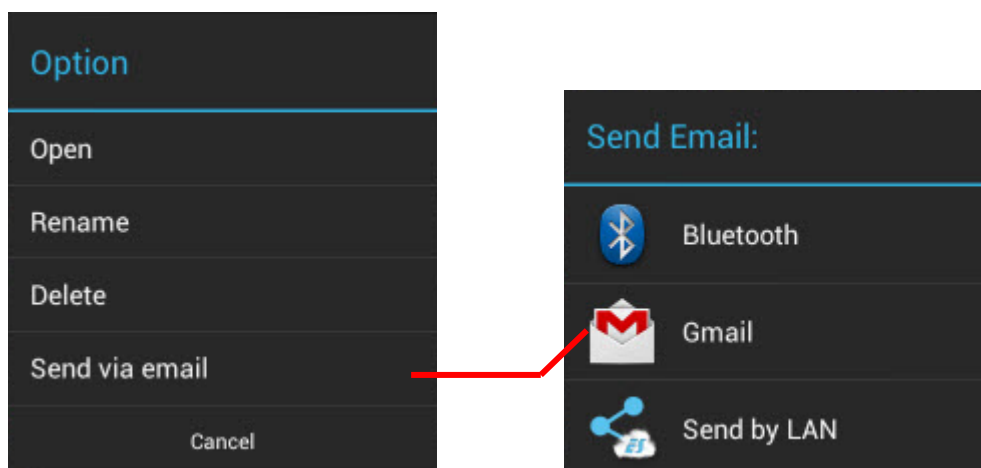
Delete

Tap on 「Delete」 to remove selected file after taping on 「OK」.



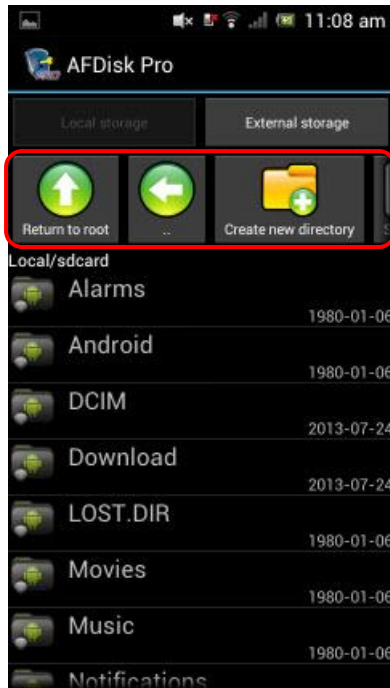
Send via mail

Tap on 「Send via mail」, then select the desired email app and send the file with the email.




Multiple File Operation (Local Storage)

The list of files in the internal storage is displayed once you enter the Local Storage menu while the 「Return to root」, 「Return on top」, 「Create new directory」, and 「Select all」 function icons are displayed in tool bar.




Return to root



Tap on  to return to the default directory (APP main screen) of your “Local Storage”.


Return on top

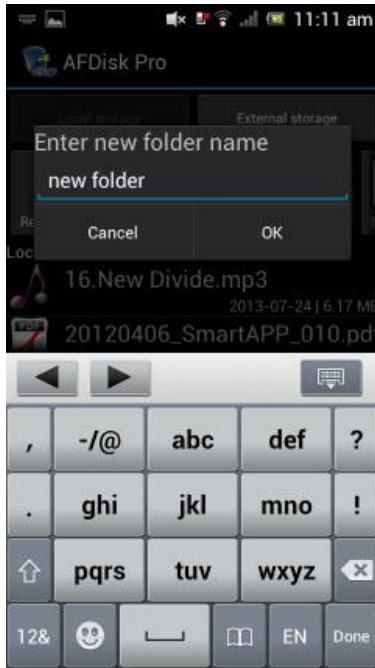


Tap on  to return to the last directory.

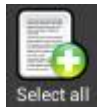
Create new directory

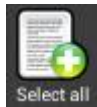


Tap on  to create a new folder in the current directory.



Select all



Tap on  to select all files and folders in the current directory.

Tap on the file/folder icon to select the desired option (Figure 1). The circle of the file/folder is then checked (Figure 2) and the 「Remove all」, 「Cut」, 「Copy」, 「Delete」 and 「Send via email」 function icons display in the tool bar (Figure 3).

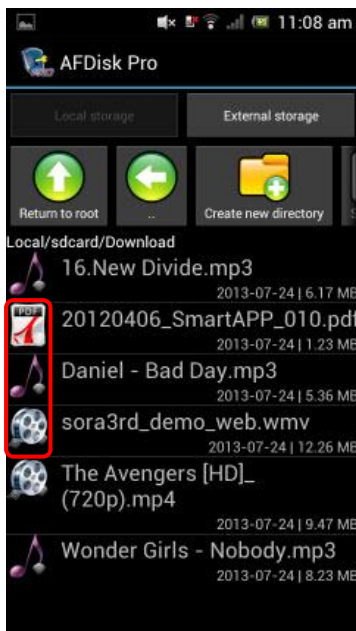


Figure 1

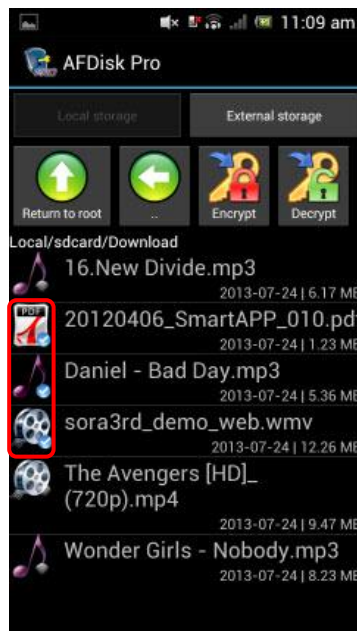


Figure 2

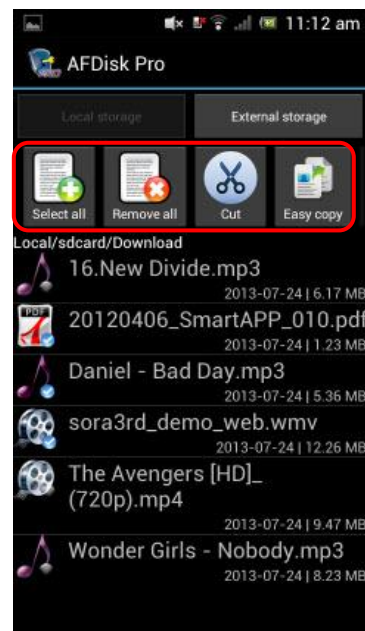
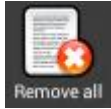
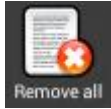


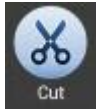
Figure 3


Remove all




Tap on  to deselect the files and folders that have been selected.

Cut



Tap on  to move the selected file/folder to another directory (Figure 1). The directory position and grid lines turn yellow for the selected files (Figure 2) and you can move them to the desired destination. You may choose to move files to any destination in the Local Storage or External Storage or any newly created folder. Tap



on  and the selected files start moving.

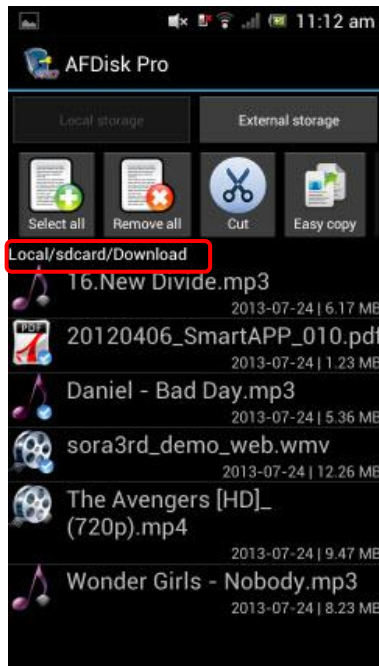


Figure 1

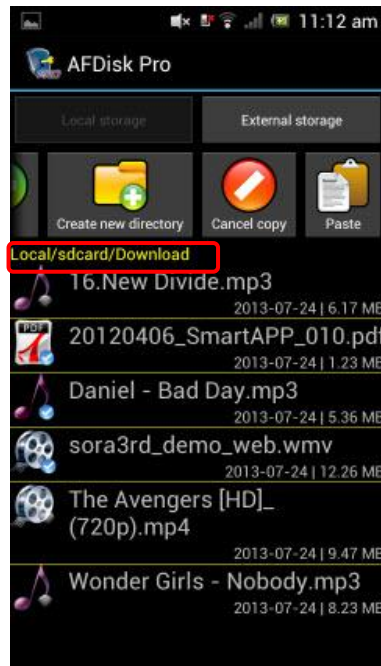
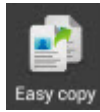
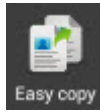


Figure 2


Easy Copy




Tap on  to copy selected files/folders to “AFDisk” folders auto created in the “External Storage (Smart Power Drive SecurePRO device)”.

Copy

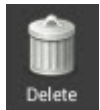


Tap on  to copy the selected file/folder to another directory. The directory position and grid lines turn yellow for the selected files and you can move them to the desired destination. You may choose to move files to any destination in the Local



Storage or External Storage or any newly created folder. Tap on  and the selected files start copying.


Delete



Tap on  to remove selected file after tapping on 「OK」.

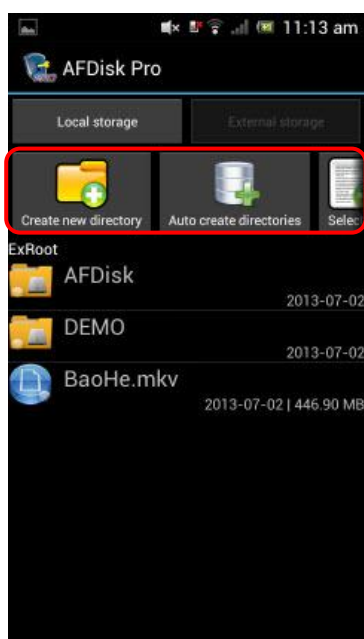
Send via mail



Tap on , then select the desired email app and send the file with the email.


Multiple File Operation (External Storage)

The list of files in the internal storage is displayed once you enter the External Storage (Smart Power Drive SecurePRO) menu while the 「 Create new directory 」 , 「 Auto create directories 」, 「 Select all 」, and 「 Format 」 function icons are displayed in tool bar.



Create new directory




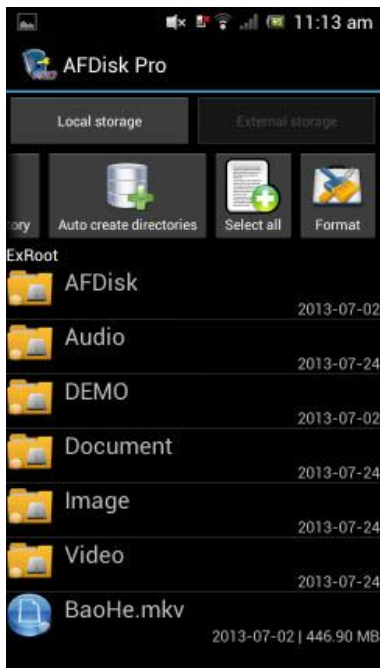
Tap on  to create a new folder in the current directory.



Auto create directories



To manage files, tap on  to create the 「Audio」, 「Document」, 「Image」 and 「Video」 folders automatically.

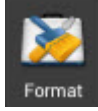


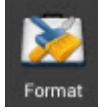
Select all



Tap on , and select all files and folders of the directory.

Format



Tap on  to format the External Storage (Smart Power Drive SecurePRO) and remove any files/folders contained in it.

Icons of advanced functions displayed in the tool bar after selecting any file/folder, including 「Remove all」, 「Cut」, 「Copy」, 「Delete」, and 「Send via Mail」 can be used the same was as those found in the Local Storage menu.

Limit on its uses

Limits on Smart Power Drive SecurePRO device

Please insert the micro SD card into your Smart Power Drive SecurePRO before using it.

Limits on External Storage

Do not remove the Smart Power Drive SecurePRO device when a mobile phone is connecting Smart Power Drive SecurePRO to run the Open, Copy, Cut, Delete, Send via mail functions in the External storage as this may cause damage or loss of files!

Limits on Remove Smart Power Drive SecurePRO Safely

To remove your Smart Power Drive SecurePRO from a mobile phone safely, tap the Return key in the Local Storage main screen (Figure 1) or the External Storage main screen (Figure 2) to confirm ejecting the device before removing your Smart Power Drive SecurePRO.

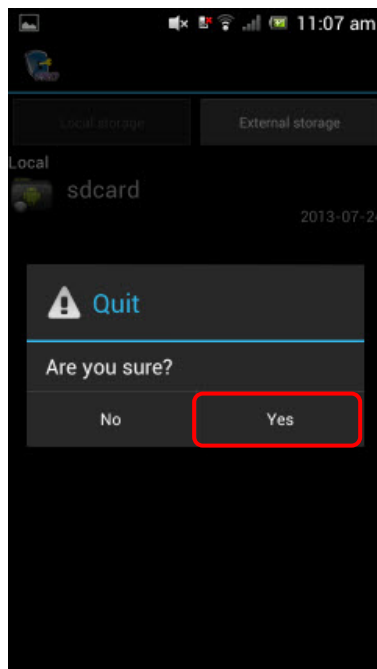


Figure 1

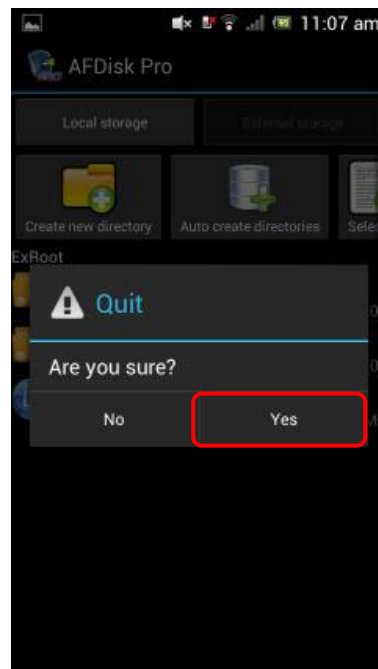


Figure 2

Troubleshooting

Do self checks as below in case of Smart Power Drive SecurePRO operation failure:

1. Is the micro SD / micro SDHC card inserted correctly?
2. In case you cannot connect to a mobile phone or play a video or file, please remove your Smart Power Drive SecurePRO and plug in again for smooth operation.