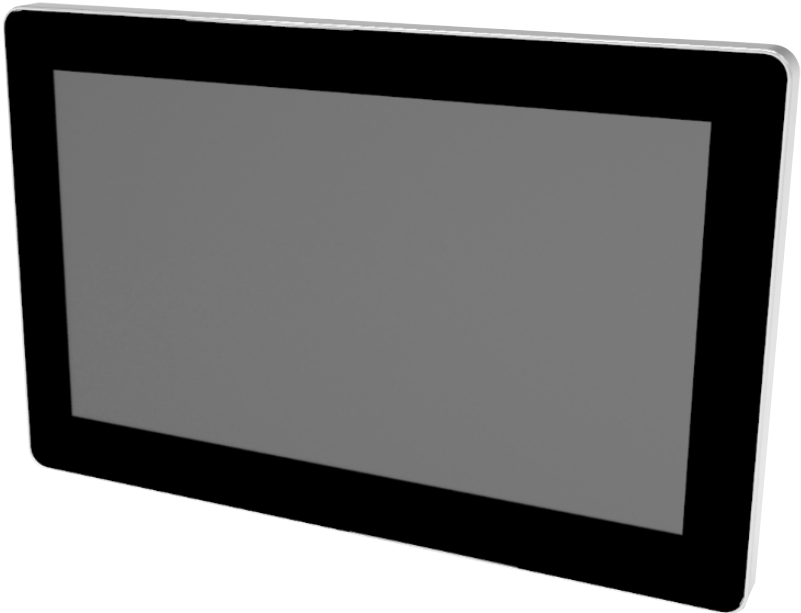


CD-70 USB Display
User Manual



CONTENTS

CHAPTER 1 SAFETY	3
CHAPTER 2 INTRODUCTION.....	5
CHAPTER 3 INSTALLATION	7
CHAPTER 4 MOUNTING	10
CHAPTER 5 OPERATION	11
CHAPTER 6 TECHNICAL SUPPORT	16

PRECAUTIONS

Follow all warnings, precautions and maintenance as recommended in this user manual to maximize the life of your unit and prevent risks to user safety. See the Safety & Maintenance chapter for more information.

This manual contains information that is important for the proper setup and maintenance of the unit. Before setting up and powering on your new USB display, read through this manual, especially the Installation, Mounting, and Operation chapters.

This manual explains the procedures for operating and maintaining the USB display.

To ensure the proper use and optimum performance of this device, read this manual thoroughly.

FCC STATEMENT

This device has been tested and found to comply with the limits for a Class A digital device, pursuant to part 15 of the FCC Rules, these limits are designed to provide reasonable protection against harmful interference when the device is operated in a commercial environment. This device generates, uses and can radiate frequency energy and, if not installed and used in accordance with this manual, may cause harmful interference to radio communications. Operation of this device in a residential area is likely to cause harmful interference in which case the user will be required to correct the interference at his/her own expense.

FCC WARNING

Changes or modifications not expressly approved by the party responsible for compliance could void the user's authority to operate the device.

Best Management Practice (BMP) for Perchlorate Materials in California States

This device includes perchlorate in the lithium battery.

Perchlorate material-special handling may apply when handling this device.

For detail, refer to <http://www.dtsc.ca.gov/hazardouswaste/perchlorate>.

Vermont Mercury Management Rules

LCD display lamps contain mercury. Dispose of them properly.

CE MARK

This device complies with the requirements of the EEC directive 2004/108/EC with regard to "Electromagnetic compatibility" and 2006/95/EC with regard to "Low Voltage Directive".



LEGISLATION AND WEEE SYMBOL



2002/96/EC Waste Electrical and Electronic Equipment Directive on the treatment, collection, recycling and disposal of electric and electronic devices and their components.

The crossed-out wheeled bin symbol on the device means that it should not be disposed of with other waste at the end of its working life. Instead, the device should be delivered to a waste collection center for activation of the treatment, collection, recycling and disposal procedure.

To prevent possible harm to the environment or human health from uncontrolled waste disposal, please separate this device from other types of waste and recycle it responsibly to promote the sustainable reuse of material resources.

Business users should contact their supplier and check the terms and conditions of the purchase contract regarding its disposal.

It should not be mixed with other commercial waste for disposal.

Product Description

Project Name	Spec Description	
LED Panel	7"	
	Resolution: 800x480	
	Brightness: 350nits	
	Contrast Ratio: 500:1(typ)	
	Response Time:25 ms (typ)	
	Lifetime: 20,000hours	
USB transfer board	Controller (Display Link)	DL115 Single core Max Resolution: 1024x600
	Memory	SDAM on board
		256Mb(16Mx16)
	Input	USB 2.0
	Output	TTL
	PCB	4-layer
Color: green		
Power input	USB DC 5V	
Power consumption	2.5W	
Environment	Operation Temperature:0~40°C	
	No Operation Temperature:-20°C~60°C	
OS	Windows XP, Windows Vista, Windows7	



CAUTION

Because of the special USB driver required, the USB display cannot function as primary display during boot-up. An additional display must be used to install the USB driver.

Add colloidal particle (PVC 45P, external mode BK-001) and iron dust core (outside diameter 14.2, inside diameter 6.35, length 28.5) in cable



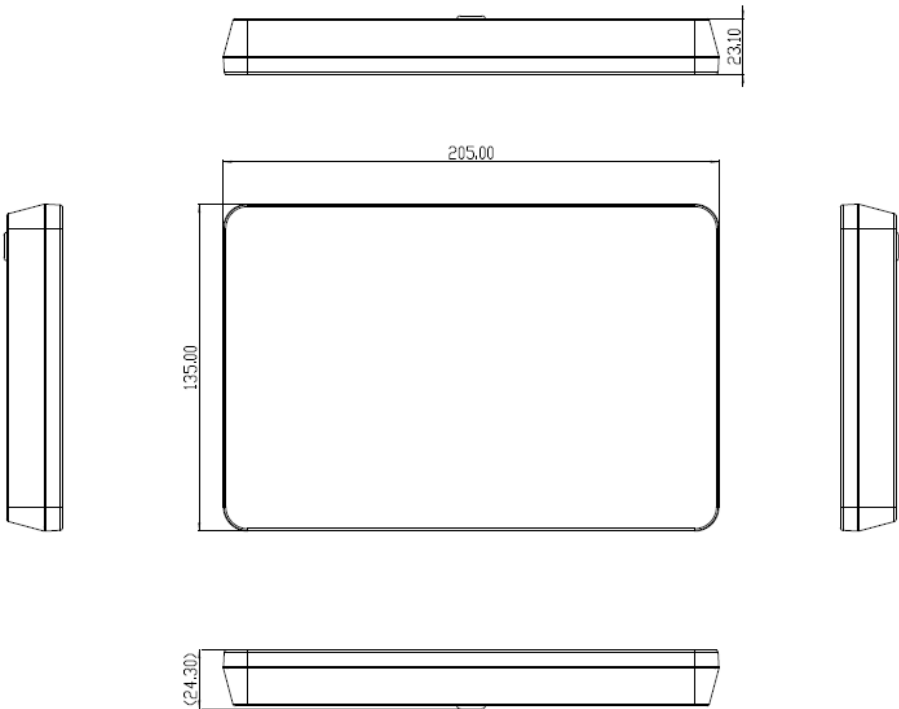
NOTE

The power cable near products-side clip the iron dust core which function is electromagnetic interference suppression and around two times; User do not move or remove the iron dust core please.

Mechanical Specification

Item		Min.	Typ.	Max.	Unit
USB Display Size	Horizontal (H)	204.5	205	205.5	mm
	Vertical (V)	134.7	135	135.5	mm
	Depth (D)	22.9	23.1	23.3	mm
Weight		850			g

Mechanical Dimension



Unpacking the USB Display

Open the carton and verify that the following items are present:

- 1 USB display with USB or JST cable.
- 4 M4x8mm screws

Minimum Computer Hardware Requirements

For 1-2 USB displays, business usage, productivity target. This may not provide full frame rate DVD playback at full screen.

- 1.2GHz Single Core CPU
- 512MB memory

For 3 USB displays where 1 could run DVD video while also targeting productivity and business apps. Will support only 1 video of DVD resolution at full screen:

- 1.6GHz CPU
- 1GB memory

For 6 screens where 1 screen can run full screen DVD video:

- 1.8GHz Core Duo
- 1GB memory

At least one USB 2.0 port.

30 megabytes(MB) of free disk space.

Primary display

USB display Connections

1. Connect the USB Type A one of your computer's USB ports. Or connect the JST connector and JST cable of the terminal.
2. The USB display is in an ON state: video should be displayed on your USB display once the Display-Link™ driver is installed on your computer.

Installing the DisplayLink Software Drivers

The DisplayLink technology enables video-over-USB. It allows your USB display to use one USB cable for power, video.



NOTE

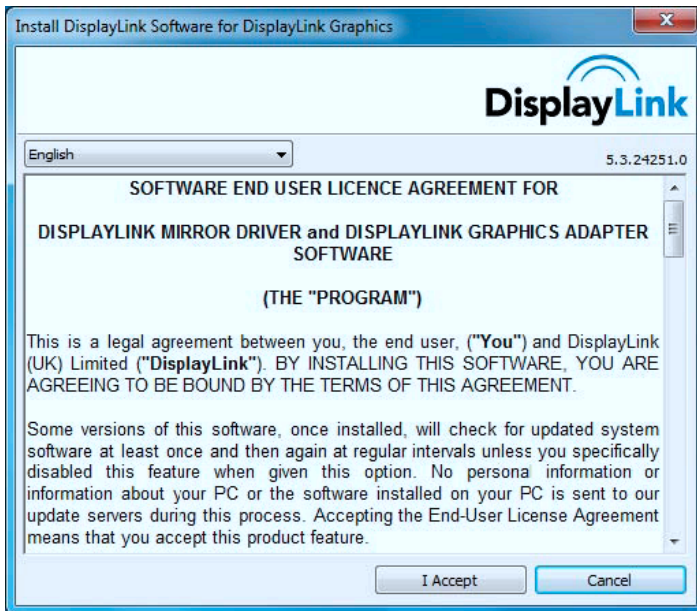
1. *This USB Display can not function as Primary display during boot-up. An additional display must be used to install the DisplayLink driver.*
2. *If you have v3.x,R4.1orR4.2 DisplayLink software installed you must uninstall it, using the Windows Add/Remove Programs feature before installing this release. Devices will continue working after this release is installed.*



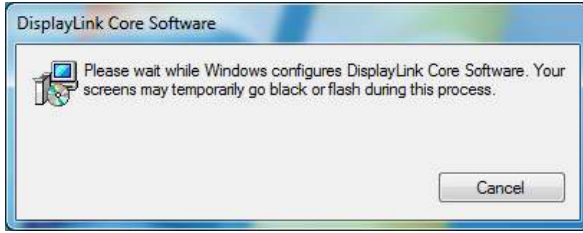
IMPORTANT

Do not connect the USB display to your PC before the install.

1. Run the Driver, Double click the driver for USB display.
2. Click **Yes**.
3. The Display Link software end user license agreement window opens.



4. Click I Accept. The following screen appears during install

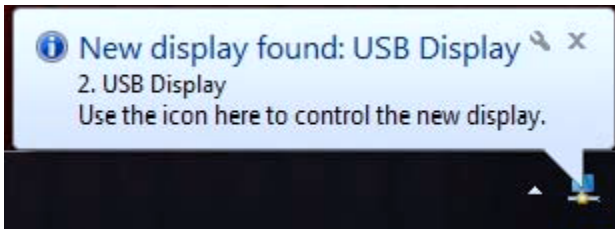


NOTE

The screen may flash or go black during the install. No message will be shown at the end of the install.

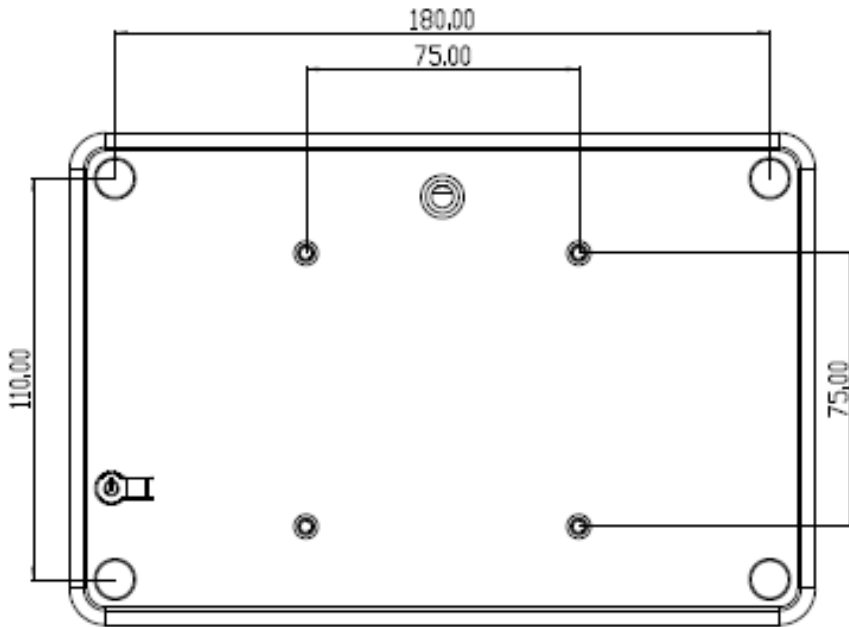
5. No message will be shown at the end of the install. Reboot your computer after the install is complete.

After the USB display is plugged in via USB cable, the USB display shape icon will appear in the system tray and the following message will be displayed:



Rear VESA Mount

A four-hole 75x75mm mounting pattern for M4 screws is provided on the rear of the USB display

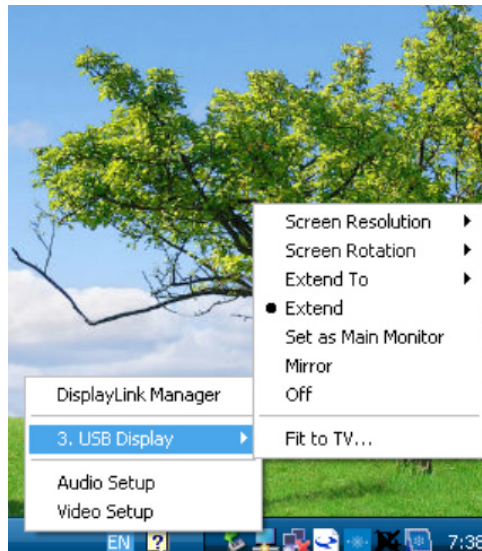


Power

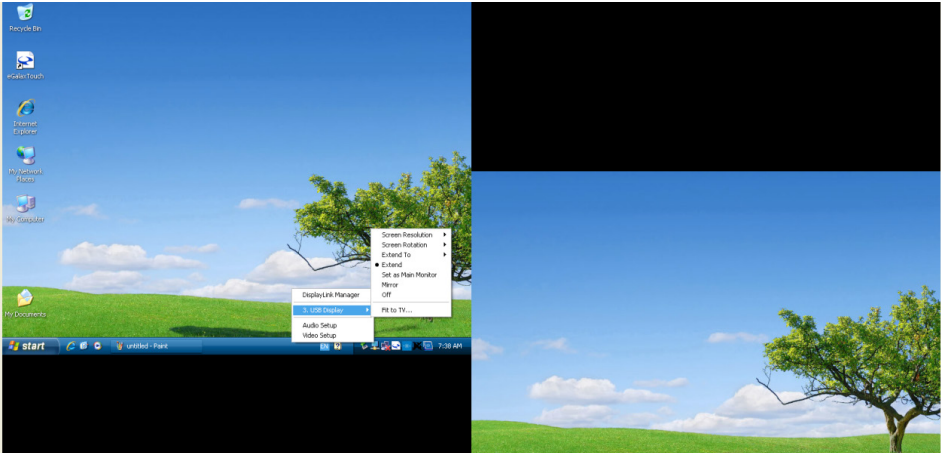
To turn the USB display on or off, press the USB display power button on the back of the USB display once.
The system consumes low power when in SLEEP and OFF modes.

Video

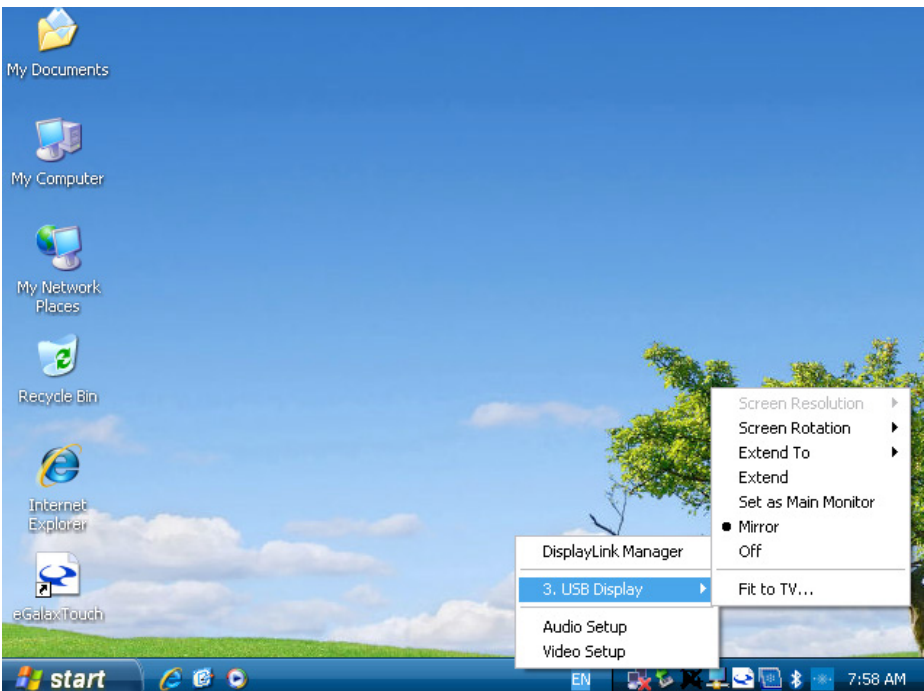
1. Display options can be selected by pressing the USB display shape icon in the system tray.



2. In Extend Mode (default), the USB display acts as an extension of the primary display desktop. The resolutions of the USB display and the primary display are maintained.

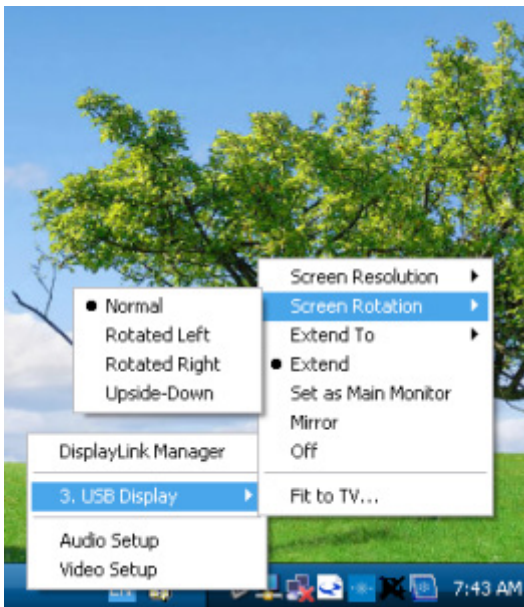
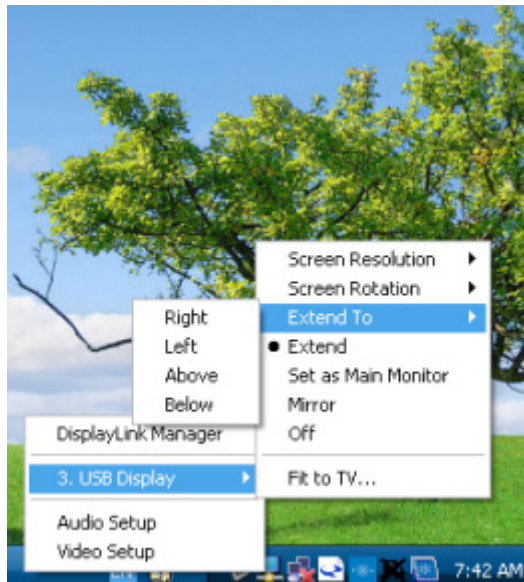


3. In Mirror mode, the same video resolution, color depth and refresh rate are sent to both displays. The video resolution that is sent depends on the primary display's native resolution. For primary displays with native resolution higher than 800x480 (most cases), the primary graphics device will automatically select, from its supported resolutions, the highest resolution that ensures the whole desktop fits on the USB display. For primary displays with native resolution lower than 800x480, the desktop will be letter-boxed on the USB display to maintain the aspect ratio.



Setting the USB display mode:

1. Click the DisplayLink icon on the taskbar. The menu appears as shown below.



2. Select an option from the menu, using the following table for the options available.

Menu Option	Sub-menu option	Description
Screen Resolution		Displays a list of available resolutions.
Screen Rotation	Normal	No rotation is applied to the USB display
	Rotated Left	Rotates the extended or mirrored display by 270 degrees.
	Rotated Right	Rotates the extended or mirrored display by 90 degrees.
	Upside-Down	Rotates the extended or mirrored display by 180 degrees.
Extend to	Right	Extends the display to the right of the main display.
	Left	Extends the display to the left of the main display.
	Above	Extends the display to the above of the main display.
	Below	Extends the display to the below of the main display.
Extend		Extends your desktop onto the secondary display.
Set as Main Monitor		Sets the secondary display as the main display.
Mirror		Copies what is on the main display and reproduces it on the secondary display.
Off		Switched off the secondary display.
Fit to TV		Opens a GUT to change the size of the Windows desktop so it fits on a TV screen.

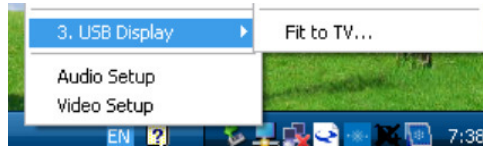


NOTE

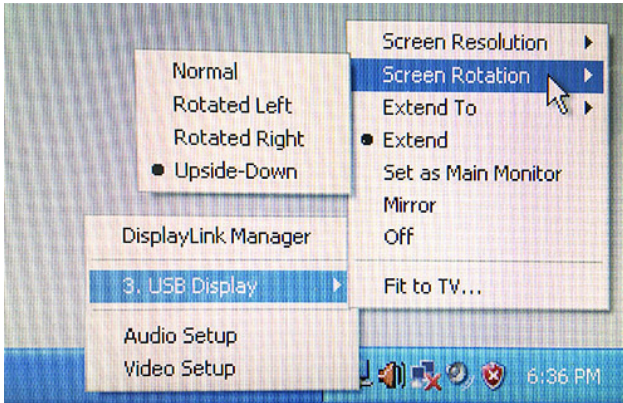
In Windows XP OS, the USB display cannot be setting as main monitor and setting as mirror mode

Monitor Rotation

1. Find the USB display icon on the tool bar, and press that right button of the mouse.



2. Select the “USB Display” first, and then select the “Screen Rotation”.
3. Select the direction you want, ”Normal, Rotated Left, Rotated Right or Upside-Down”



NOTE

Partner Tech Utility can't support “Rotated Left” and “Rotated Right”.

CHAPTER 6 TECHNICAL SUPPORT

If you are experiencing trouble with your USB display, refer to the following suggestions.

If the problem persists, please contact your local dealer.

Solutions to Common Problems

Problem	Suggested Troubleshooting
The USB display does not respond when turning on the system.	Check that the USB cable is correctly attached to the USB display and the computer. Disconnect and reconnect the USB cable.
USB display is blank.	The USB display or computer module may be in SLEEP mode. Press any key / move the mouse the USB display to see if the image reappears. If none of the above steps worked, restart the PC.