

# Cloud Keyboard Security

## User Manual

Version 1.28

# Contents

<b>1. Hardware Installation .....</b>	<b>3</b>
1.1 Cloud Security Keyboard.....	3
1.2 Cloud Keyboard Security Adapter .....	3
<b>2. Software Installation.....</b>	<b>4</b>
<b>3. Basic Usage .....</b>	<b>5</b>
<b>4. Advanced Setting .....</b>	<b>6</b>
4.1 CKS Adapter Menu .....	6
4.2 CKS Adapter Setting Dialog.....	7
4.2.1 Security Status .....	7
4.2.2 Enable Options.....	8
4.2.3 Support List .....	10
<b>5. Notation .....</b>	<b>14</b>
5.1 CKS Adapter Encrypted Key .....	14
5.2 Limitation .....	14
5.3 Uninstallation .....	15

## 1. Hardware Installation

### 1.1 Cloud Security Keyboard

If you bought the “Cloud Security Keyboard”, then plug the USB cable to your PC directly. And follow up the step of next section to install the Keyboard Security Software.



### 1.2 Cloud Keyboard Security Adapter

- If you bought the “Cloud Keyboard Security Adapter”, then plug your standard USB keyboard or wireless keyboard (male connector) to **Cloud Keyboard Security (CKS) Adapter** (female connector of USB).
- Plug Cloud Keyboard Security Adapter USB male connector to your PC (desktop or laptop).
- Install the CKS software as next section.



## 2. Software Installation

Insert bundled CD to PC for software/driver's installation, and then follow few steps as following procedure to install the CKS software



Step 1: Welcome



Step 2: License Agreement



Step 3: Installation Folder








Step 4: Ready to Install



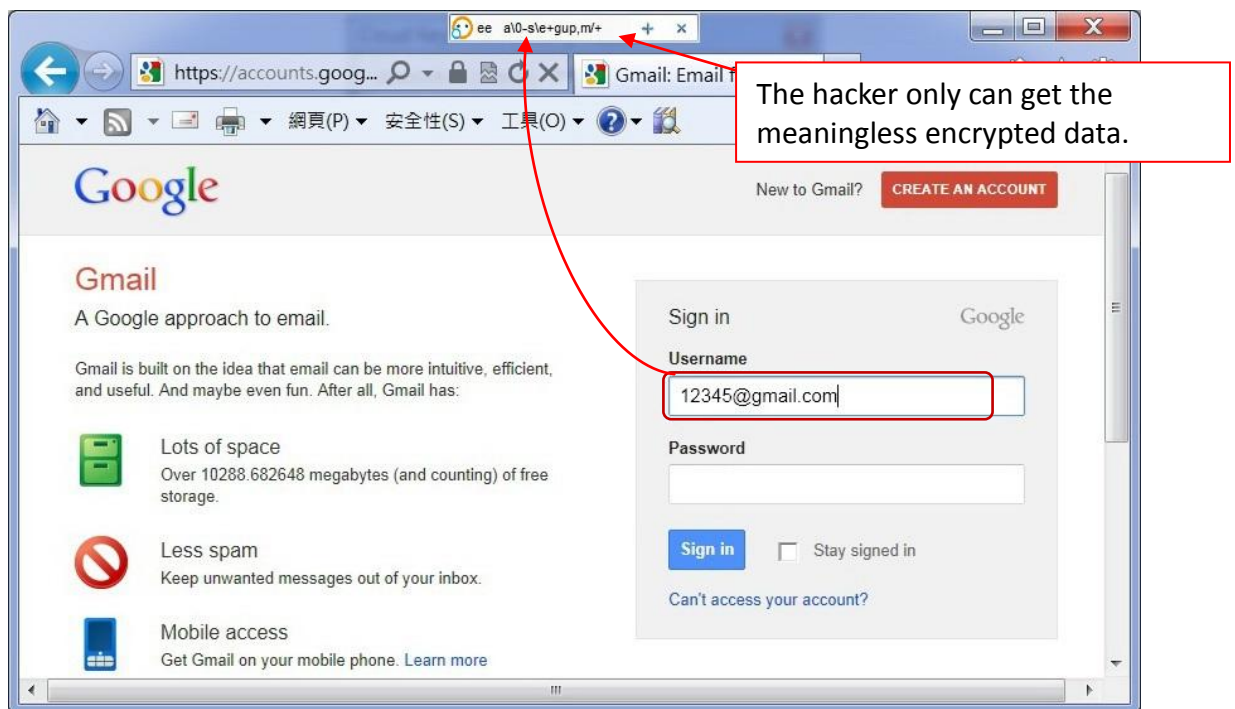
Step 5: Installation Successful

### 3. Basic Usage

If you install of CKS software completed, then next time when your re-boot it will auto-run by default setting. The icon  will appear on system tray area. There are 4 states of icon on system tray for representing CKS Keyboard or Adapter status.

-  Enabled: When the CKS software is enabled and hardware is ready.
-  Connected: When the CKS Keyboard or Adapter is connected to the application software. The data from keyboard are protected in this state.
-  Disabled: When the CKS software is disabled.
-  Disconnected: When the CKS Keyboard or Adapter hardware is not found.

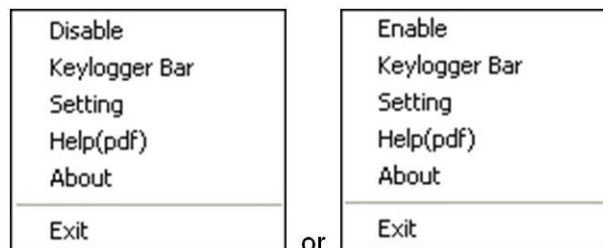
When the CKS Keyboard or Adapter is connected to application software, the data from keyboard in the application will be protected by CKS Anti-keylogger System. CKS System will auto change the encrypted key by mouse click, <Tab> key, <Caps Lock> key and <Enter> key.



## 4. Advanced Setting

### 4.1 CKS Adapter Menu

By right click the CKS Software in system tray, the CKS system menu will appear as follows.



- Select **[Disable]/[Enable]** to Disable/Enable the CKS security mode. Win+Ctrl keys are the hot key for switching CKS security mode between Enabled and Disabled.
- Select **[Keylogger Bar]** or left click the CKS icon in system tray, the CKS's Keylogger Bar will appear as below:



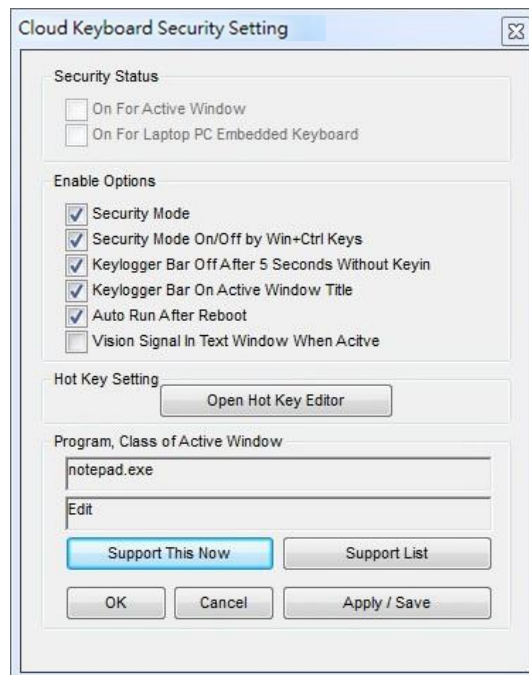
You can know the CKS encrypted characters for each word when you are typing. Right click the CKS icon on the Keylogger Bar will pull down the CKS system menu, too. When Keylogger Bar was turn-off, you can click the CKS icon to turn-on again.

- Select **[Setting]** in the menu or left click the CKS icon on the Keylogger Bar will open the setting dialog of CKS.
- Select **[Help(pdf)]** to open CKS's User Manual.
- Select **[About]** to read the information about CKS system.




- Select **[Exit]** to close the CKS software.

## 4.2 CKS Adapter Setting Dialog



### 4.2.1 Security Status

#### a. On For Active Window

This status will be ticked when CKS Keyboard or Adapter is connecting to application software; your typing data are protected. The system tray icon will show:  (Connected)

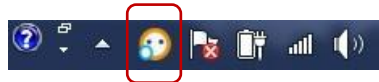
#### b. On For Laptop PC Embedded Keyboard

This status will be ticked if you have installed the **Driver** for your laptop PC embedded keyboard.

## 4.2.2 Enable Options

### a. Security Mode

When this option is ticked, CKS software will be enabled. The system tray and Keylogger bar will show 😊 or 😊. If Security Mode is disabled then icon change to 😞.



### b. Security Mode On/Off by Win+Ctrl Keys

When this option is ticked, CKS security mode can be turned on/off by using the Win+Ctrl keys.

### c. Keylogger Bar Off After 5 Seconds Without Keying

When this option is ticked, CKS Keylogger Bar will turn off after 5 seconds without keying.

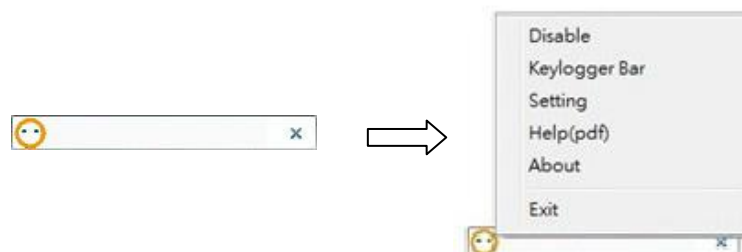
Win+Ctrl keys are the hot key for turn on/off the Keylogger Bar.

### d. Keylogger Bar On Active Window Title

When this option is ticked, CKS Keylogger Bar will always on the top of the active window.



If move the cursor to the Keylogger Bar icon 😊, then right click will show the CKS menu as following.



### e. Auto Run After Reboot

When this option is ticked, CKS software will always auto-run after system reboot.



**f. Vision Signal In Text Window When Active**

When this option is ticked, CKS icon will be showed on the right-top corner or right side of a text bar when the CKS is connected to target application software.



Sign in with your  
**Google Account**

Email: JimmyLin   
ex: pat@example.com

Password:

Stay signed in

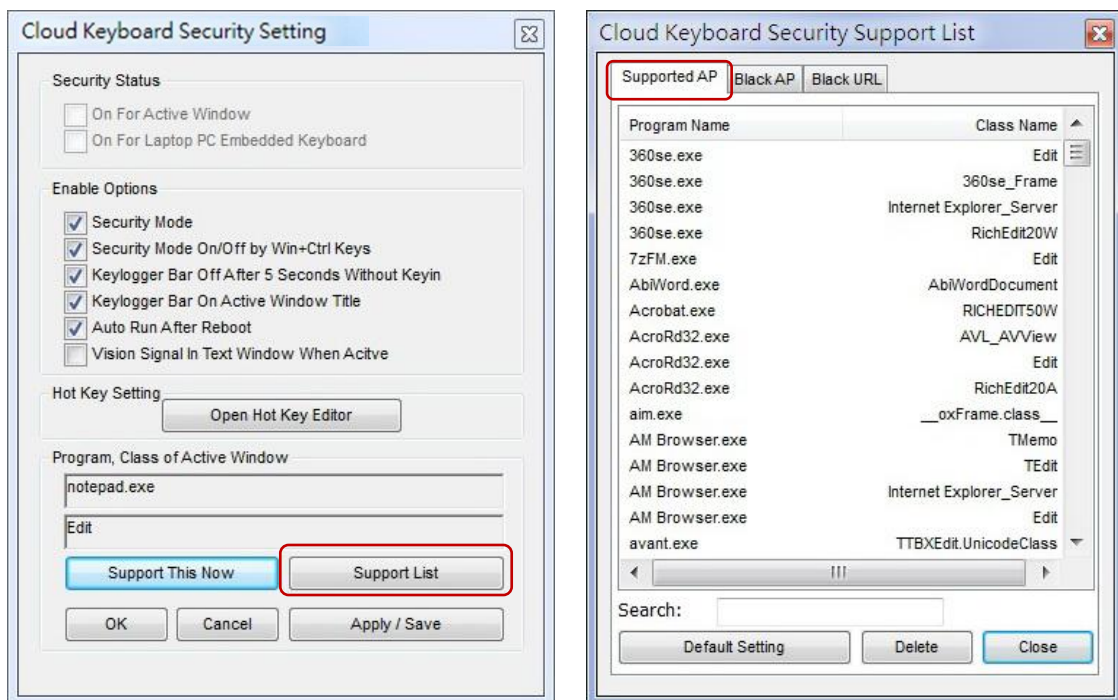
[Can't access your account?](#)

Don't have a Google Account?  
[Create an account now](#)

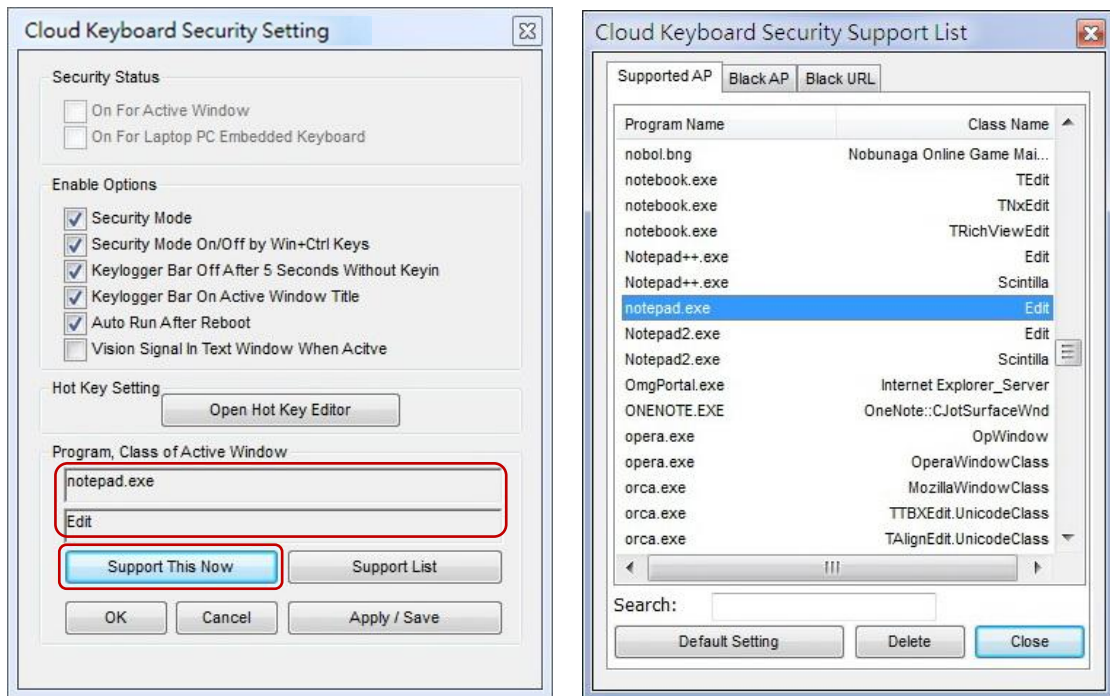
### 4.2.3 Support List

User can support her/his own software which is not listed in CKS software support list by the following procedure:

1. Open the CKS Setting Dialog by select the **[Setting]** in CKS Adapter menu.
2. Click the **[Support List]** button and select the **[Supported AP]** section.

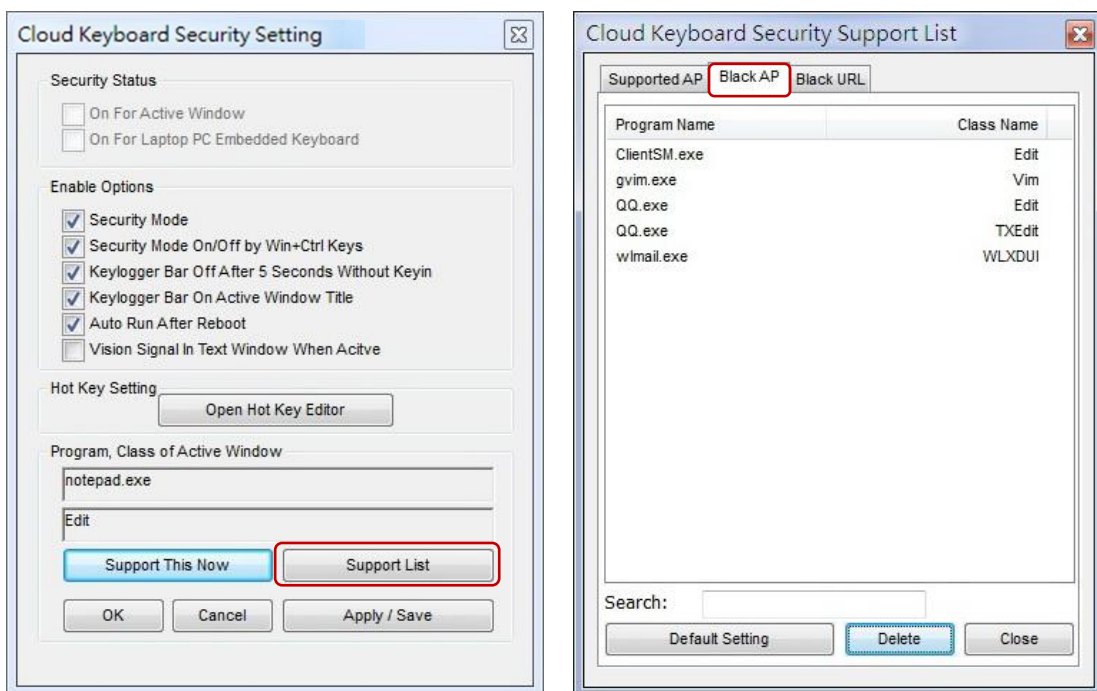


3. Click to a software you want to support. The program and class name of the active window will be showed in the CKS setting dialog (Example: notepad.exe)
4. Click the **[Support This Now]** button then click the **[Apply/Save]** button.
5. After that, the software's program and class name will add into CKS software support list, user's typing data in the supported software's program and class will be protected by CKS system.



Moreover, user can set software to the CKS's Black AP list if the software is not compatible with CKS system by the following procedure:

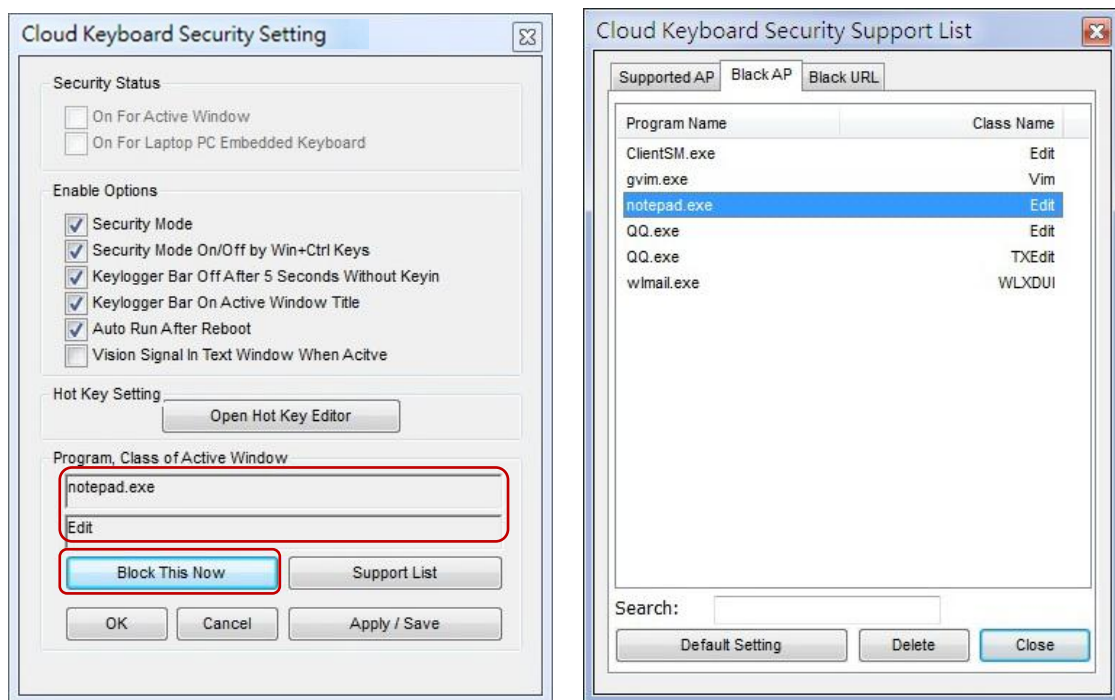
1. Open the CKS Setting Dialog by select the **[Setting]** in CKS Adapter menu.
2. Click the **[Support List]** button and select the **[Black AP]** section.



3. Click to a software you want to set to the Black AP list. The program and

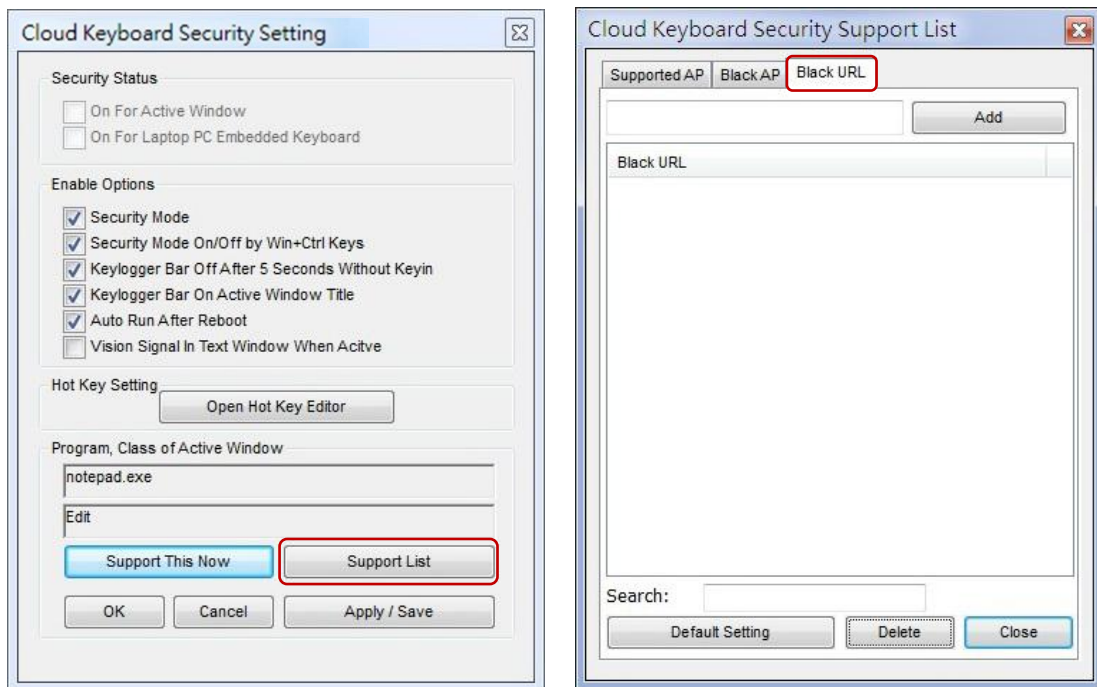
class name of the active window will be showed in the CKS's setting dialog (Example: notepad.exe)

4. Click the **[Block This Now]** button then click the **[Apply/Save]** button.
5. After that, the software's program and class name will add into CKS's Black AP list, the software in the Black AP list will not protected by CKS system and cannot add into the Support list in order to prevent conflict.

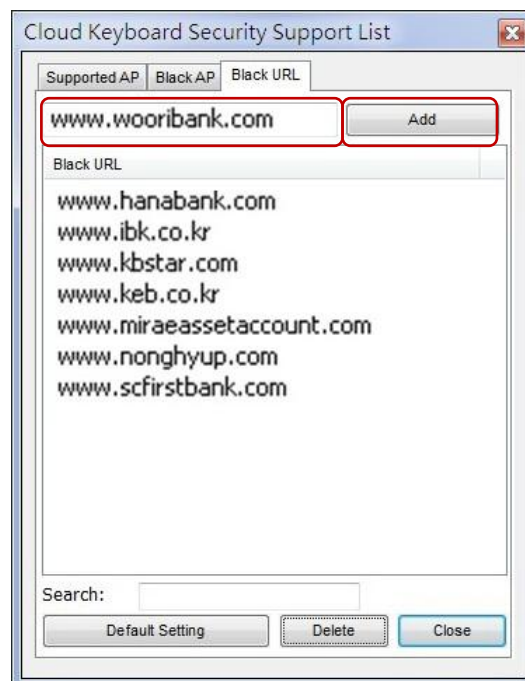


User also can set a specific website to the CKS Black list by the following procedure:

1. Open the CKS Setting Dialog by select the **[Setting]** in CKS system menu.
2. Click the **[Support List]** button and select the **[Black URL]** section.



3. Input a specific URL to the input bar and click the **[Add]** button.
4. After that, the specific URL will add into CKS's Black URL list, CKS Adapter security status will automatic turn off when user enters the website by Internet Explorer.
5. Note: The Black URL function only works for Internet Explorer.



## 5. Notation

### 5.1 CKS Adapter Encrypted Key

CKS system only encrypts the character keys, number keys and symbol keys in keyboard. We do not encrypt the function keys.

**a. CKS Encrypted Keys:**

a A b B c C d D e E f F g G h H i I j J k K l L m M n N o O p P q Q r R s S t T u U v V  
w W x X y Y z Z 0 ) 1 ! 2 @ 3 # 4 \$ 5 % 6 ^ 7 & 8 \* 9 ( = + - \_ \ | [ { } ] ; : ' " , < . >  
/ ?

**b. CKS Non-Encrypted Keys:**


“Space bar”, “Enter” and “~” do not encrypted by CKS for software compatibility purpose. “.” Key in numeric keypad also do not encrypt by CKS due to limitation of firmware.

**c. Special case in different keyboard layout:**

In most of the European keyboard layout, the “-”, “.” and “/” keys in the numeric keypad do not encrypted by CKS due to limitation.

In the French keyboard layout, user cannot type the symbols keys on the top of the keyboard layout when CKS is connected due to limitation.

### 5.2 Limitation

Due to the limitation of software, when user is switching his/her active window, we recommend user to wait for CKS Keyboard or Adapter connected to the new active window  before start typing to prevent miss-type or incorrect-type.

### 5.3 Uninstallation

The uninstallation will removed the related files of the CKS system, if CKS software is currently running; please close it before proceeding with the uninstallation.



After uninstallation, some Cloud Keyboard Security files will be removed after next reboot, please click Finish to exit or click Reboot to restart your PC.

