

# USB 2.0 DISPLAY ADAPTER

---



## USER MANUAL



# CONTENTS

---

---

<b>INTRODUCTION</b> .....	3
<b>FEATURES</b> .....	3
<b>SYSTEM REQUIREMENTS</b> .....	3
<b>SUPPORTED COMMON DISPLAY RESOLUTION</b> .....	4
<b>NOTES</b> .....	4
<b>TECHNICAL SPECIFICATIONS</b> .....	5
<b>PACKAGE CONTENTS</b> .....	5
<b>INSTALLATION ON WINDOWS 8.1/ 8/ 7</b> .....	6
<b>DEVICE DRIVER INSTALLATION</b> .....	6
<b>VERIFYING DEVICE DRIVER INSTALLATION (WINDOWS 8.1)</b> .....	10
<b>DEVICE DRIVER UN-INSTALLATION</b> .....	12
<b>INSTALLATION ON WINDOWS XP</b> .....	13
<b>DEVICE DRIVER INSTALLATION</b> .....	13
<b>VERIFYING DEVICE DRIVER INSTALLATION (WINDOWS XP)</b> .....	17
<b>DEVICE DRIVER UN-INSTALLATION</b> .....	19
<b>FUNCTION DESCRIPTION</b> .....	20
<b>ACCESS USB DISPLAY ADAPTER UTILITY (WINDOWS 7/ 8/ 8.1)</b> .....	20
<b>USB Display (Trigger) Utility</b>  .....	20
<b>Super Utility</b>  .....	24
<b>Q&amp;A</b> .....	27
<b>TROUBLESHOOTING TIPS</b> .....	28
<b>Known Issues</b> .....	28
<b>General Recommendation</b> .....	28
<b>Media Playback</b> .....	28
<b>Others</b> .....	29
<b>REGULATORY COMPLIANCE</b> .....	30

## INTRODUCTION

Thank you for purchased the USB 2.0 DISPLAY ADAPTER. The USB 2.0 Display Adapter works as an external video card which allow adding an additional display instantly without hassle of open the computer chassis to install the internal graphics card. The connected display can act as mirrored or extended desktop of the main display on your computer, and to support the resolution up to 1920 x 1200. It provides low latency connection, simply “Plug-n-Play” between your computer and 2<sup>nd</sup> monitor or projector, you will be able to create a new visual environment in a few seconds.

## FEATURES

- ◆ USB 2.0 specification compliant
- ◆ Supports display resolution up to 1920 x 1200 / 1920 x 1080 @32bit
- ◆ Plug-and-Play USB connectivity after software installed
- ◆ Support multi-display up to six adapters for office application
- ◆ Friendly software
  - Identify Monitors
  - Multi-Display Control Panel
  - Shortcut to access Windows Display Setting dialog

## SYSTEM REQUIREMENTS

- ◆ Available USB 2.0 port
  - ◆ 1~2 USB Displays (office application):
    - CPU: i3 Dual core 2.8GHz
    - RAM: 2GB memory or higher
  - ◆ 3~4 Displays (office application):
    - CPU: i5 Quad Core 2.8GHz
    - RAM: 4GB memory or higher
  - ◆ 5~6 Displays (office application):
    - CPU: i7 Quad Core 3.0GHz
    - RAM: 8GB memory or higher
  - ◆ Windows 8.1/ Windows 8/ Windows 7 & Windows XP (32 or 64 bit)
  - ◆ Mac OS: Snow Leopard (10.6) / Lion (10.7)/ Mountain Lion (10.8)/ Mavericks (10.9)/ Yosemite (10.10)  
(Mac OS: up to three displays for office application only)
- (Recommended Windows XP & Mac USB 2.0 for office application only)

**SUPPORTED COMMON DISPLAY RESOLUTION**

Aspect Ratio	Resolution	Color Depth
Wide Screen Display		
16:10	1920 x 1200	16,32 bits
16:9	1920 x 1080	16,32 bits
16:10	1680 x 1050	16,32 bits
16:9	1600 x 900	16,32 bits
16:10	1440 x 900	16,32 bits
16:9	1360 x 768	16,32 bits
16:10	1280 x 800	16,32 bits
15:9	1280 x 768	16,32 bits
16:9	1280 x 720	16,32 bits
Standard Display		
4:3	1600 x 1200	16,32 bits
4:3	1400 x 1050	16,32 bits
5:4	1280 x 1024	16,32 bits
4:3	1280 x 960	16,32 bits
4:3	1152 x 864	16,32 bits
4:3	1024 x 768	16,32 bits
4:3	800 x 600	16,32 bits

- ◆ **Monitor refresh frequency: 60 Hz**

**NOTES**

- ◆ Please visit our website to update the latest driver version for the good performance.
- ◆ Do not recommend to connect USB 2.0 DISPLAY ADAPTER via the external USB Hub.
- ◆ System reboot is required for the driver installation.
- ◆ Note for video player:  
Windows XP user: Windows Media Player 10 & 11 is the recommended tool for video playback.

**TECHNICAL SPECIFICATIONS**

<b>Operating System</b>	Windows 8.1 / 8 / 7 / XP (32bit &64bit) Mac Snow Leopard (10.6) / Lion (10.7) / Mountain Lion (10.8) / Mavericks (10.9) / Yosemite (10.10)
<b>Host Interface</b>	USB 2.0 A type connector Length: 50±50cm soldered PCBA
<b>Video Output Connector</b>	DB- 15pin (female) – Model: USB 2.0 - VGA DVI-I (female) – Model: USB 2.0 - DVI
<b>Case Material</b>	ABS
<b>Power Source</b>	Bus Powered
<b>Regulatory Compliances</b>	CE, FCC, VCCI and C-Tick RoHS compliant
<b>Environmental Specification</b>	Operating Temperature: 0~50°C Storage Temperature: -10~75°C Humidity: <85% non-condensing

**PACKAGE CONTENTS**

- ◆ USB 2.0 DISPLAY ADAPTER \* 1
- ◆ Driver / Manual CD \* 1
- ◆ Quick Installation Guide \* 1

## INSTALLATION ON WINDOWS 8.1/ 8/ 7

### DEVICE DRIVER INSTALLATION

Installing the device driver enables your computer's operating system to recognize the **USB 2.0 DISPLAY ADAPTER** once it's connected. Please check your operating system and refer to the appropriate installation procedure to begin installing the device driver.

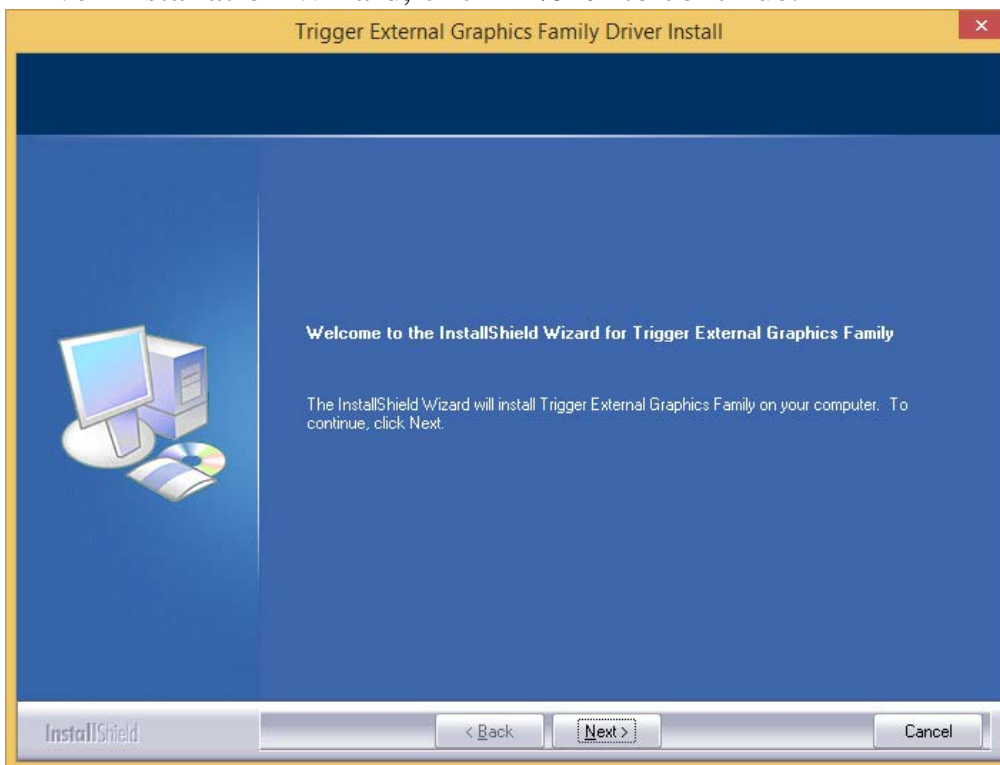
This section illustrates the simple device driver installation procedure for computer running **Windows 8.1** operating system. Please make sure the **USB 2.0 DISPLAY ADAPTER** is **unplugged** from your PC or Notebook before executing the setup program.

#### Step 1.

Insert the Driver CD into the CD-ROM drive; the setup program should be launched automatically. If setup program does not begin automatically, click Start, Run and double click "**D:\Setup.exe**" (where D: is the path of your CD-ROM drive).

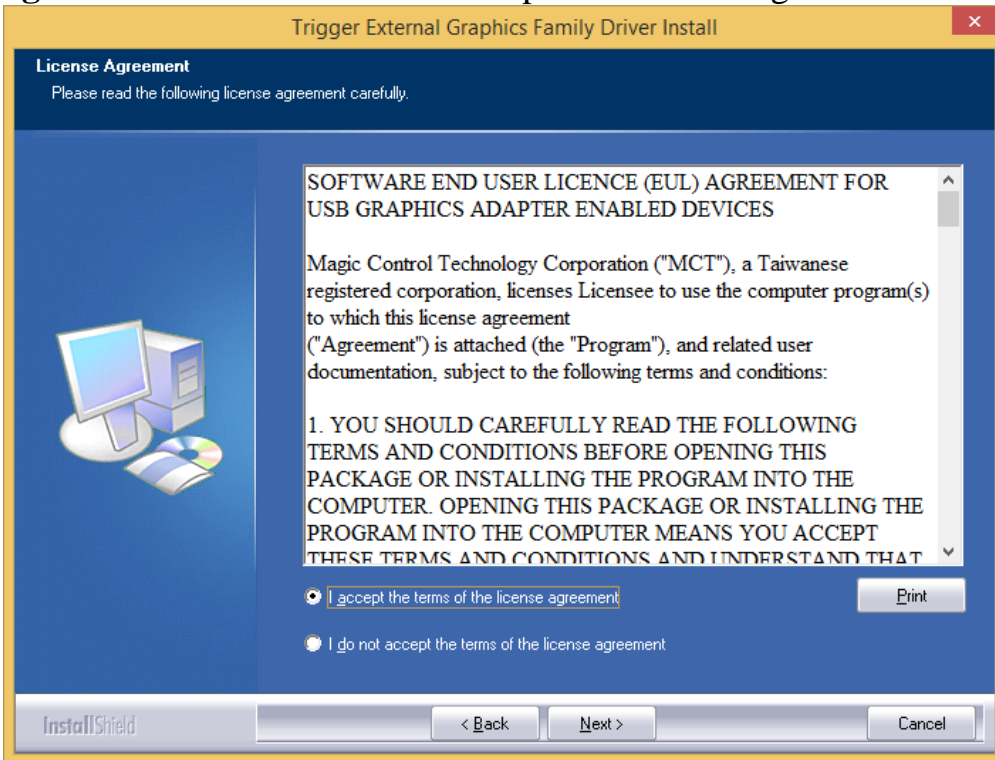
#### Step 2.

Driver Installation Wizard, click "**Next**" to continue.



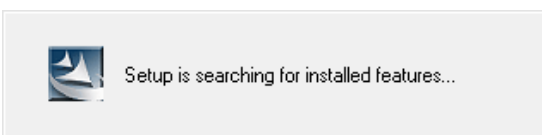
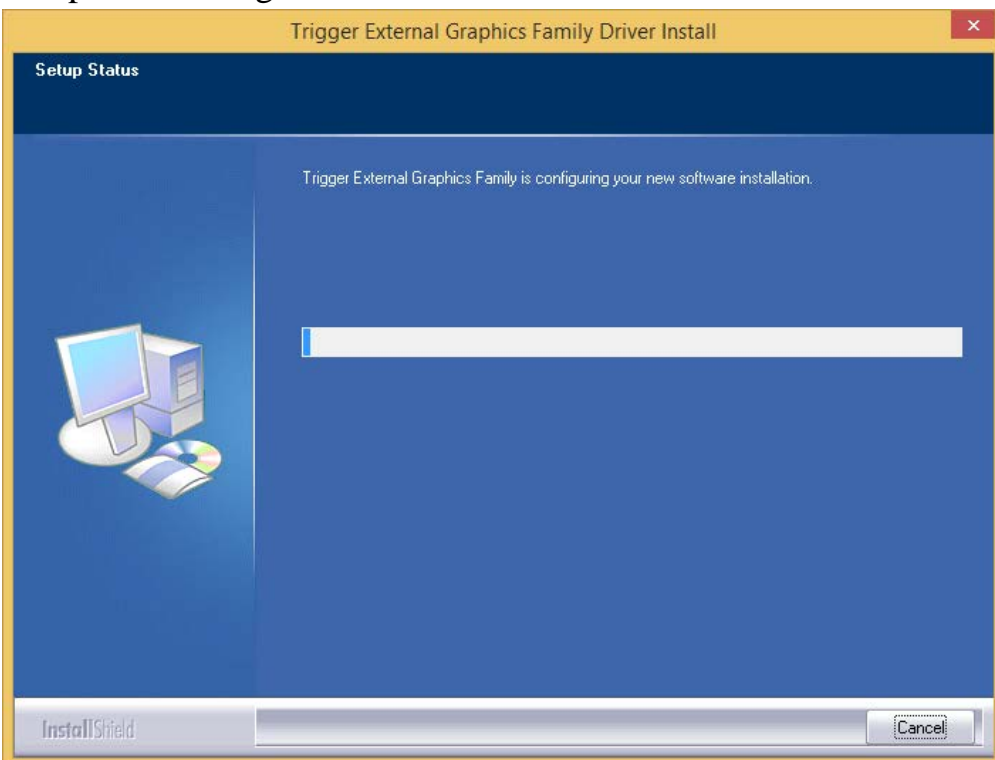
**Step 3.**

License Agreement; please review it and check **“I accept the terms of the license agreement.”** Click **“Next”** to accept the License Agreement.



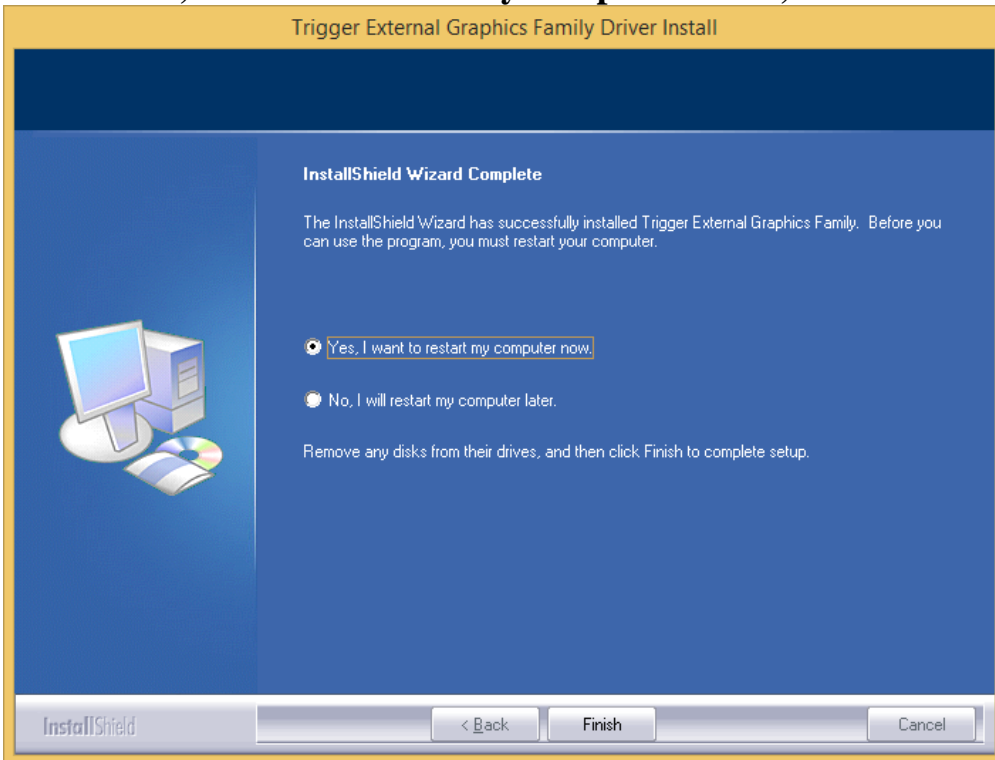
**Step 4.**

Setup is searching for installed features.....



**Step 5.**



Select “**Yes, I want to restart my computer now**”, and click “**Finish**” to reboot.



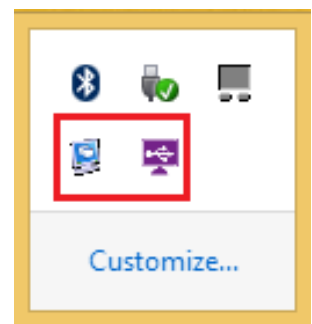
**Step 6. HARDWARE DEVICE DRIVER INSTALLATION (AFTER REBOOT)**


Please connect the external display device (monitor/projector) to the VGA/DVI connector of **USB 2.0 DISPLAY ADAPTER** and turn on this external display device.

Then plug the **USB 2.0 DISPLAY ADAPTER** into an available USB port of your PC or Notebook. The device driver software setup will begin automatically.

After the driver is configured, you will see there are two icons “Super Utility ” & “USB Display (Trigger) Utility ” on the taskbar.

The extended display will be shown on the attached display device. You may begin to use the USB 2.0 Display Adapter with your display device.



※ The “USB Display (Trigger) Utility ” icon won’t be appeared if the USB Display Adapter does not connect to the USB host.



**Step 7. INSTALLATION OF MULTIPLE USB 2.0 DISPLAY ADAPTERS**

Please connect the external display device (monitor/projector) to the VGA/DVI connector of USB 2.0 Display Adapters and turn on the external display device first.

Plug another **USB 2.0 DISPLAY ADAPTERS** into the available USB port of your PC or Notebook (USB host). The device driver software setup will begin automatically.

After the driver is complete configured, the USB extended display will be shown on the attached display device.

**All USB Display devices are now installed completely and ready to use.**

*✘ You may notice the screen flash or go black during the driver installation. It is part of the normal process.*

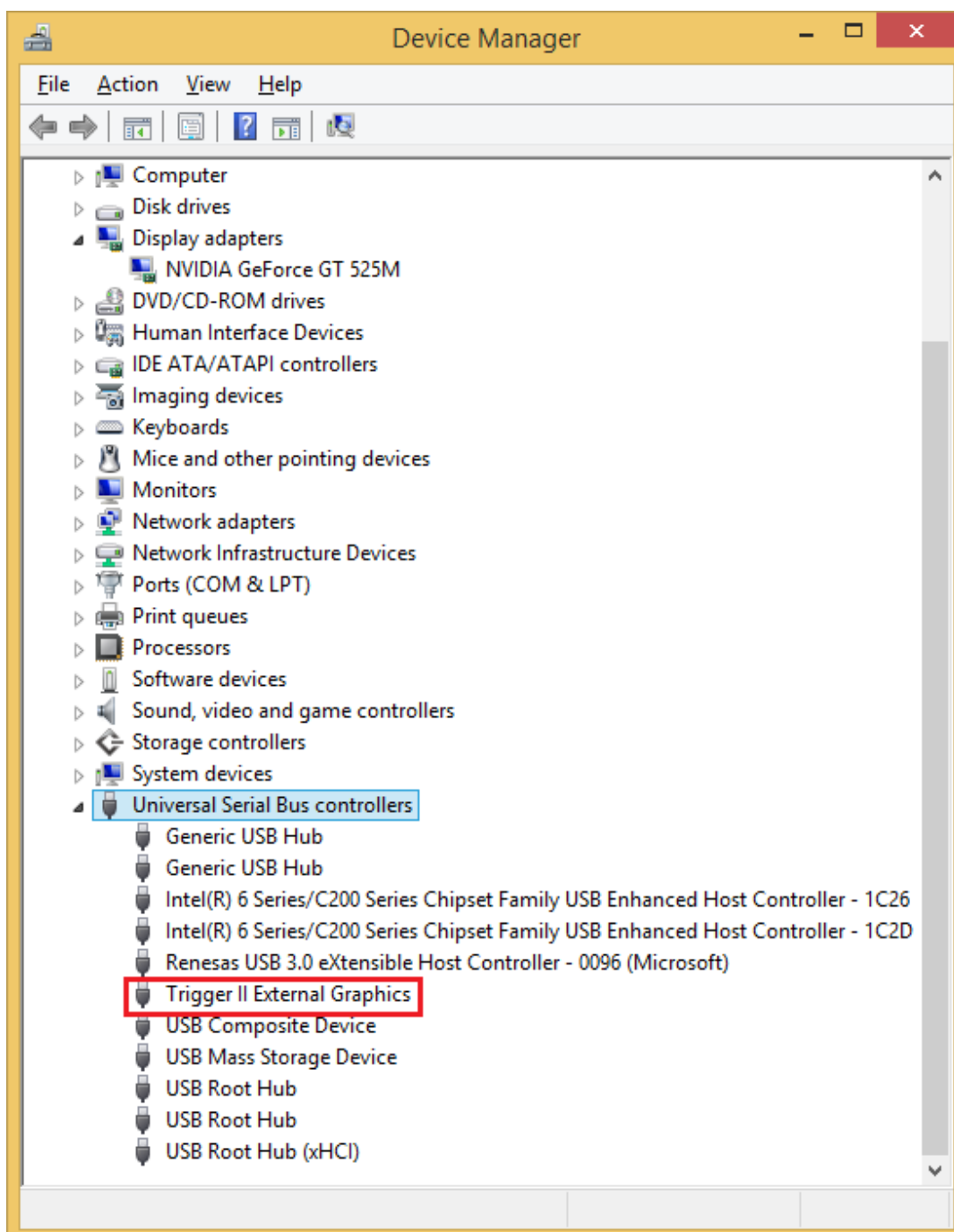
## VERIFYING DEVICE DRIVER INSTALLATION (WINDOWS 8.1)

The following procedure allows you to verify the device driver installation.

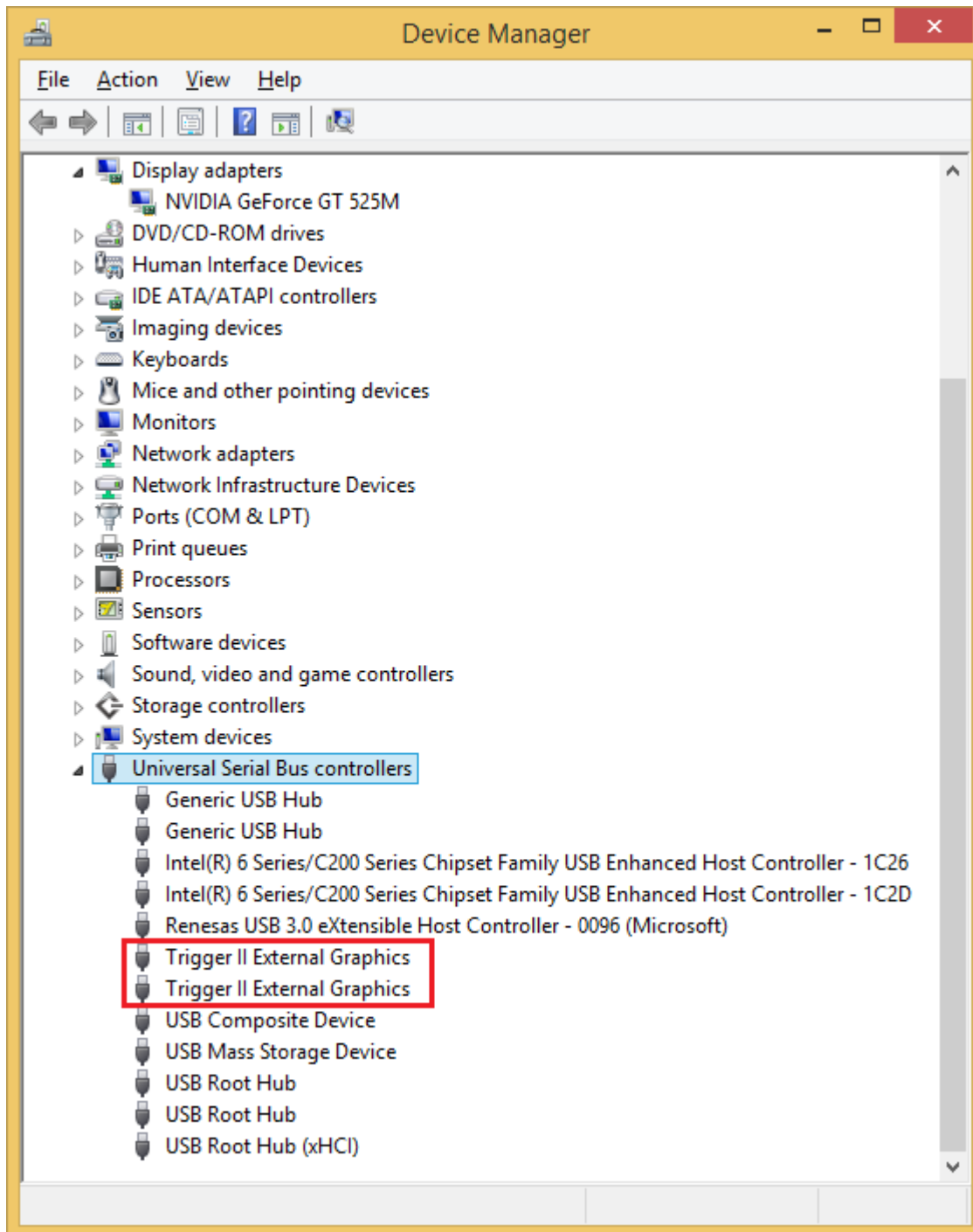
Swipe in from the right edge of the screen, and then click “**Search**”→ enter “**Device Manager**”. (Right click “**Start**” at the taskbar, click “**Device Manager**”)

Plug-in the **USB 2.0 DISPLAY ADAPTER**, then double click “**Universal Serial Bus controllers**”. Begin verification by make sure highlighted devices were added to the system.

### ➤ Single USB 2.0 Display Adapter installation on the computer

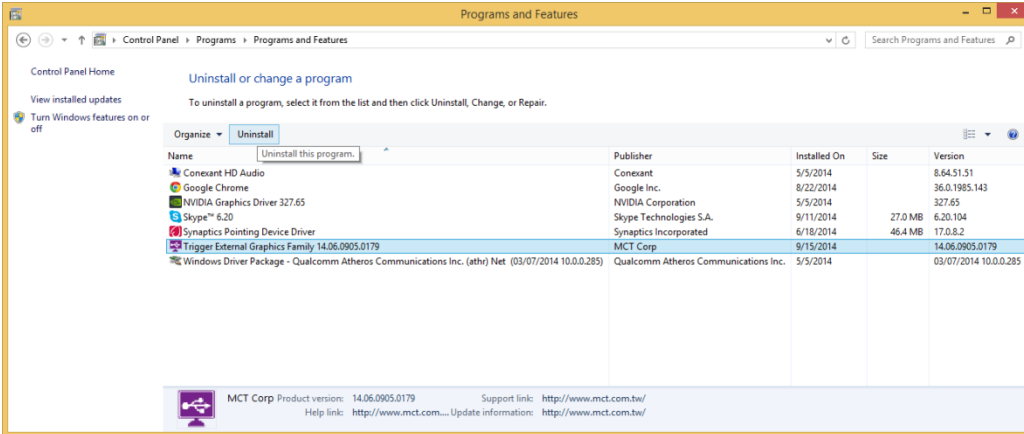


➤ **Multiple USB 2.0 Display Adapters installation on the computer**

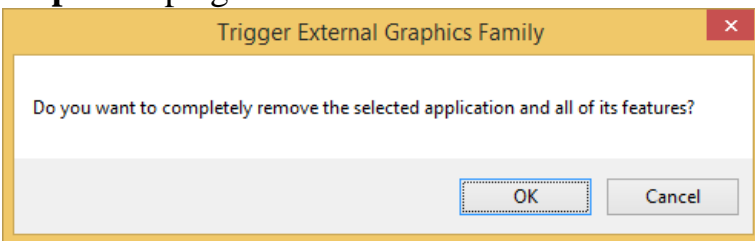


## DEVICE DRIVER UN-INSTALLATION

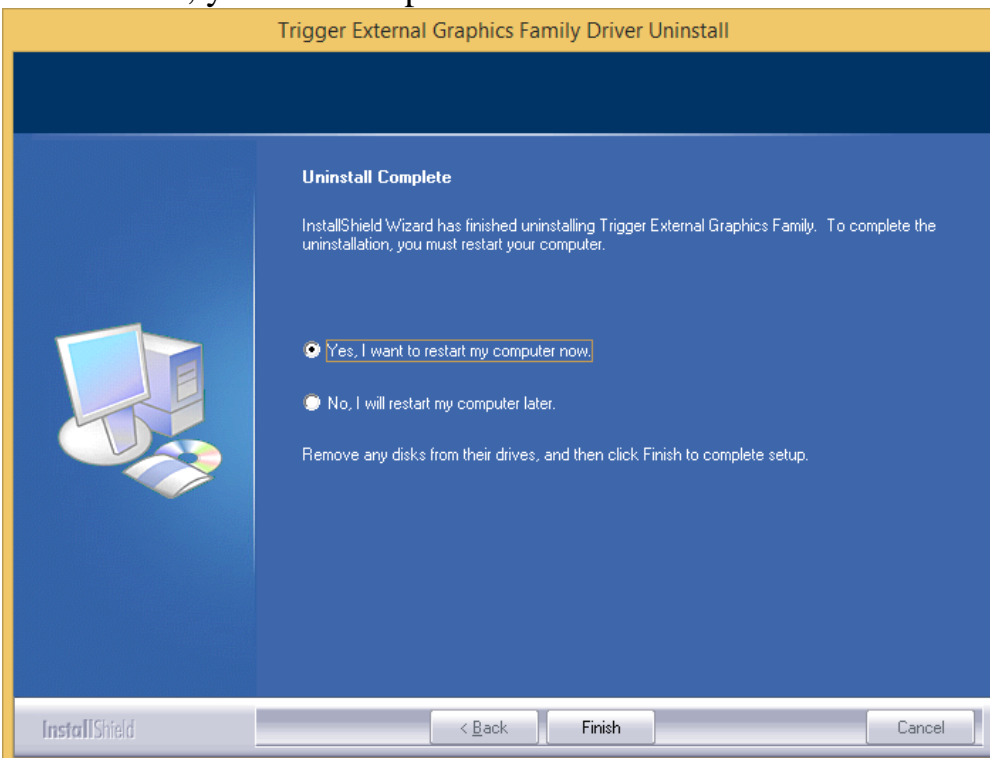
**Step 1.** Rick click “**Start**” at the taskbar, then click →”**Programs and Features**”. Select “**Trigger External Graphics Family 14.xx.xxxx.0179**”. Click “**Uninstall**” button.



**Step 2.** Unplug the **USB 2.0 DISPLAY ADAPTER** and click “**OK**” to continue.



**Step 3.** Select “**Yes, I want to restart my computer now**” and click “**Finish**” to reboot. After reboot, you will complete the driver un-installation.



## INSTALLATION ON WINDOWS XP

### DEVICE DRIVER INSTALLATION

Installing the device driver enables your computer's operating system to recognize the **USB 2.0 DISPLAY ADAPTER** once it's connected. Please check your operating system and refer to the appropriate installation procedure to begin installing the device driver.

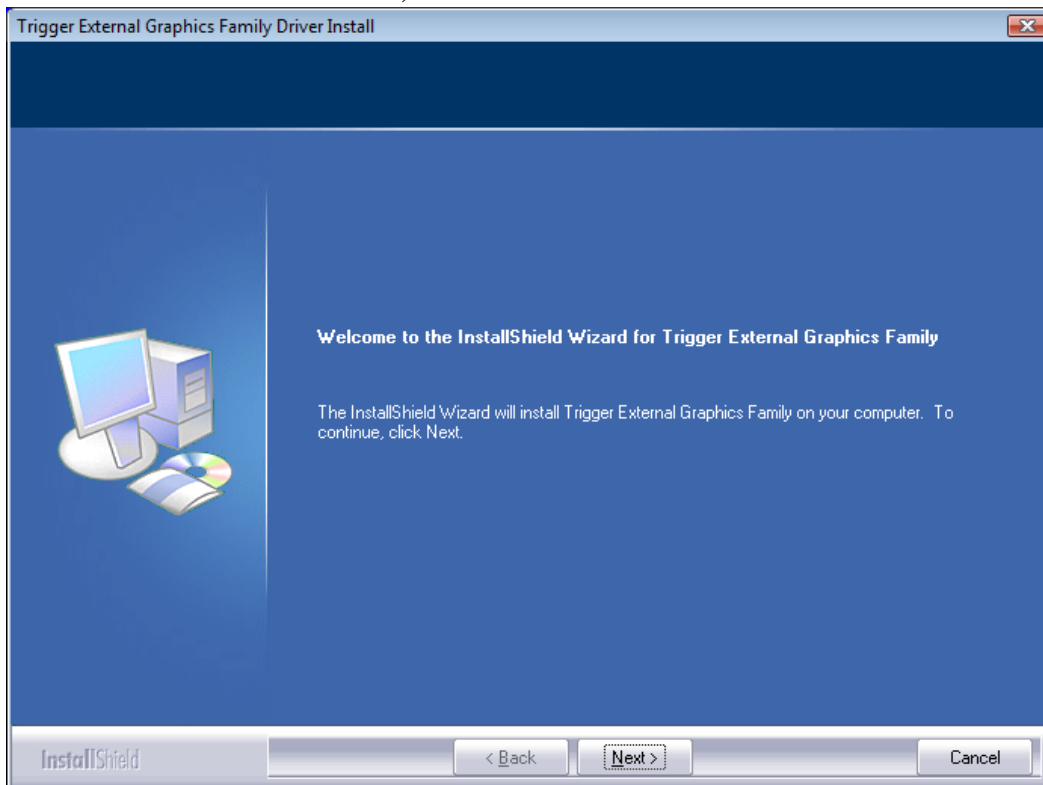
This section illustrates the simple device driver installation procedure for computer running **Windows XP** operating system. **Please make sure the USB 2.0 DISPLAY ADAPTER is unplugged from your PC or Notebook before executing the setup program.**

#### Step 1.

Insert the Driver CD into the CD-ROM drive; the setup program should be launched automatically. If setup program does not begin automatically, click Start, Run and double click "**D:\Setup.exe**" (where D: is the path of your CD-ROM drive).

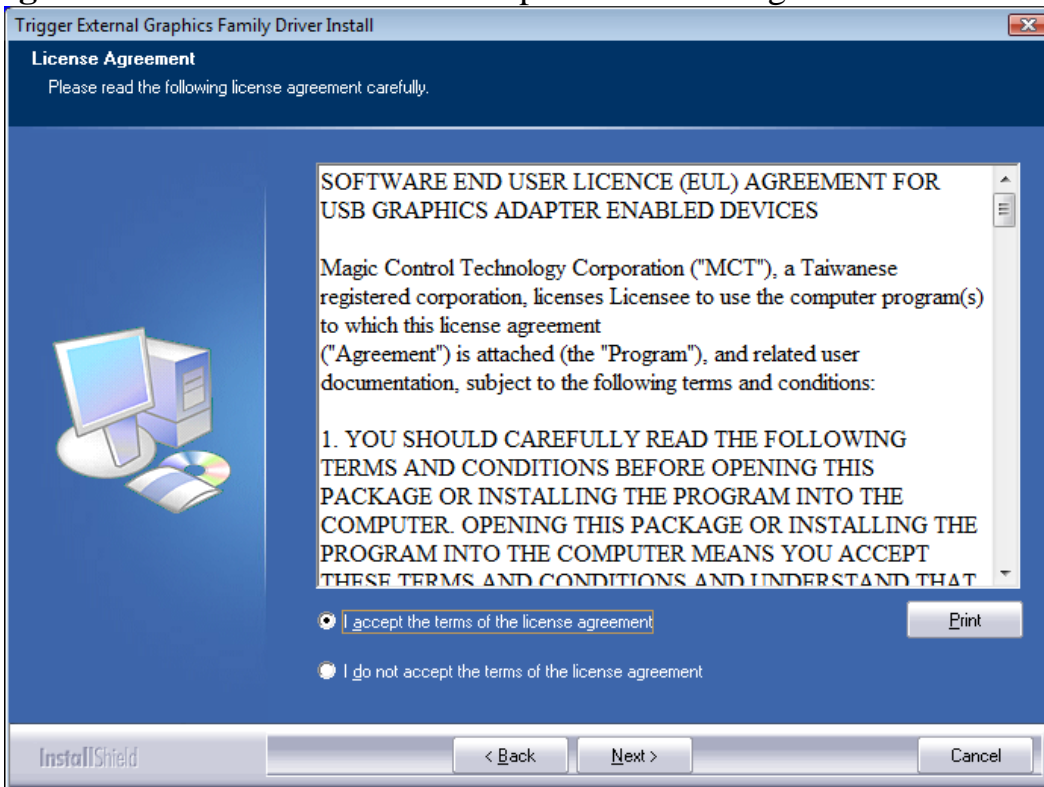
#### Step 2.

Driver Installation Wizard, click "**Next**" to continue.



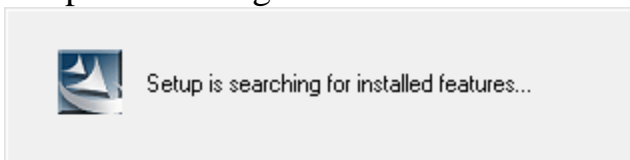
**Step 3.**

License Agreement; please read it and select **“I accept the terms of the license agreement.”** Click **“Next”** to accept the License Agreement.



**Step 4.**

Setup is searching for installed features.....

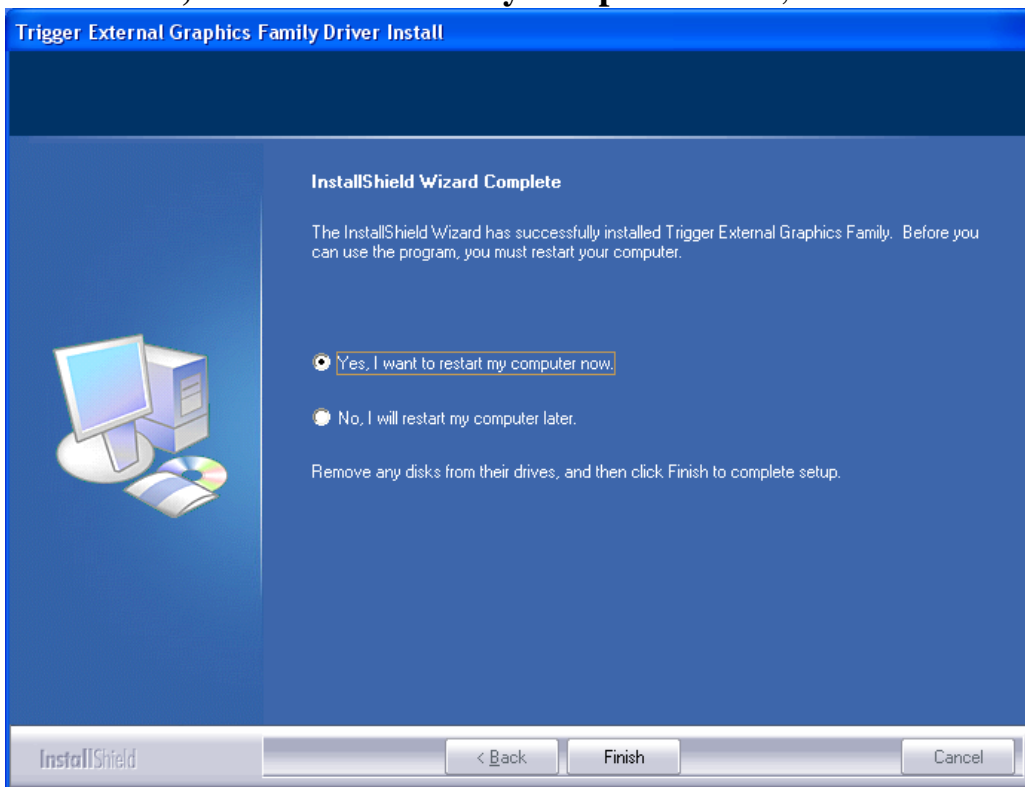


*✘ You may notice the screen flashes during the driver installation. It is part of the normal process.*

*✘ When the Microsoft Windows Security warning dialogue box appears, please select **“Continue Anyway”** to continue with the installation. This will not affect the device driver installation and the device usage.*


**Step 5.**


Select “**Yes, I want to restart my computer now**”, and click “**Finish**” to reboot.

**Step 6. HARDWARE DEVICE DRIVER INSTALLATION (AFTER REBOOT)**

1. Please connect the external display device (monitor/projector) to the VGA/DVI/HDMI connector of **USB 2.0 DISPLAY ADAPTER** and turn on this external display device.
2. Then plug the **USB 2.0 DISPLAY ADAPTER** into an available USB port of your computer. The device driver will be configured automatically.

✘ *When the Hardware Installation Wizard dialog appears, please select “**No, not this time**” and click “**Next**” to continue. Click “**Continue Anyway**” when the Microsoft Software warning dialogue box appears. Then, click “**Finish**” to complete the Hardware Wizard.*

3. After the driver is configured, you will see there are two icons “Super Utility 

✘ *The “USB Display Device (Trigger family) 15*

**Step 7. INSTALLATION OF MULTIPLE USB 2.0 DISPLAY ADAPTERS**

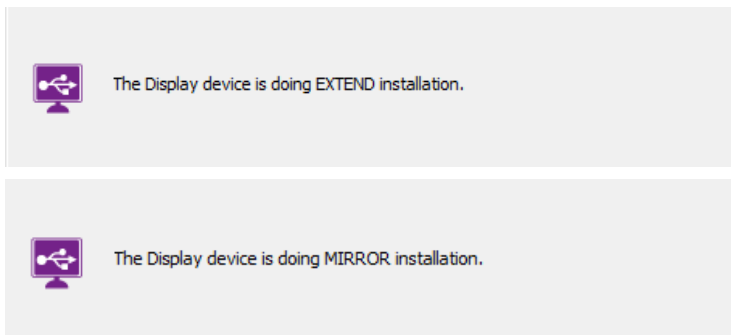
1. Please connect the external display device (monitor/projector) to the VGA/DVI/HDMI connector of **USB 2.0 DISPLAY ADAPTERS** and turn on the display device first.
2. Then plug other **USB 2.0 DISPLAY ADAPTERS** into the available USB port of your computer. The device driver software setup will begin automatically.

You may see below notification balloons for each additional.



✘ *When the Hardware Installation Wizard dialog appears, please select “No, not this time” and click “Next” to continue. Click “Continue Anyway” when the Microsoft Software warning dialogue box appears. Then, click “Finish” to complete the Hardware Wizard.*

✘ *You may notice the screen flashes during the hardware installation. It is part of the normal process.*



3. To make sure the USB 2.0 Display Adapters worked correctly, please reboot the computer after finished the installation.

**After reboot the computer, all USB Display devices are now installed completely and ready to use.**



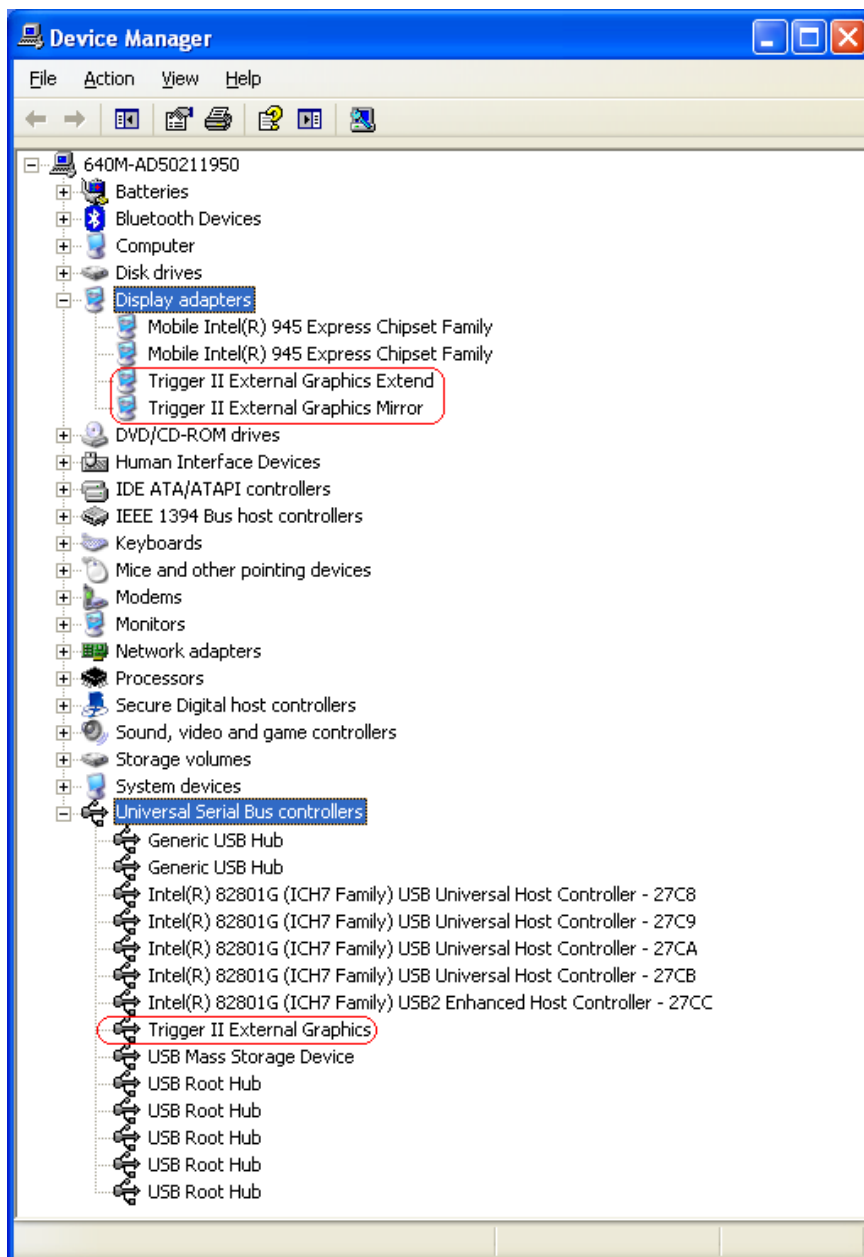
## VERIFYING DEVICE DRIVER INSTALLATION (WINDOWS XP)

The following procedure allows you to verify the device driver installation.

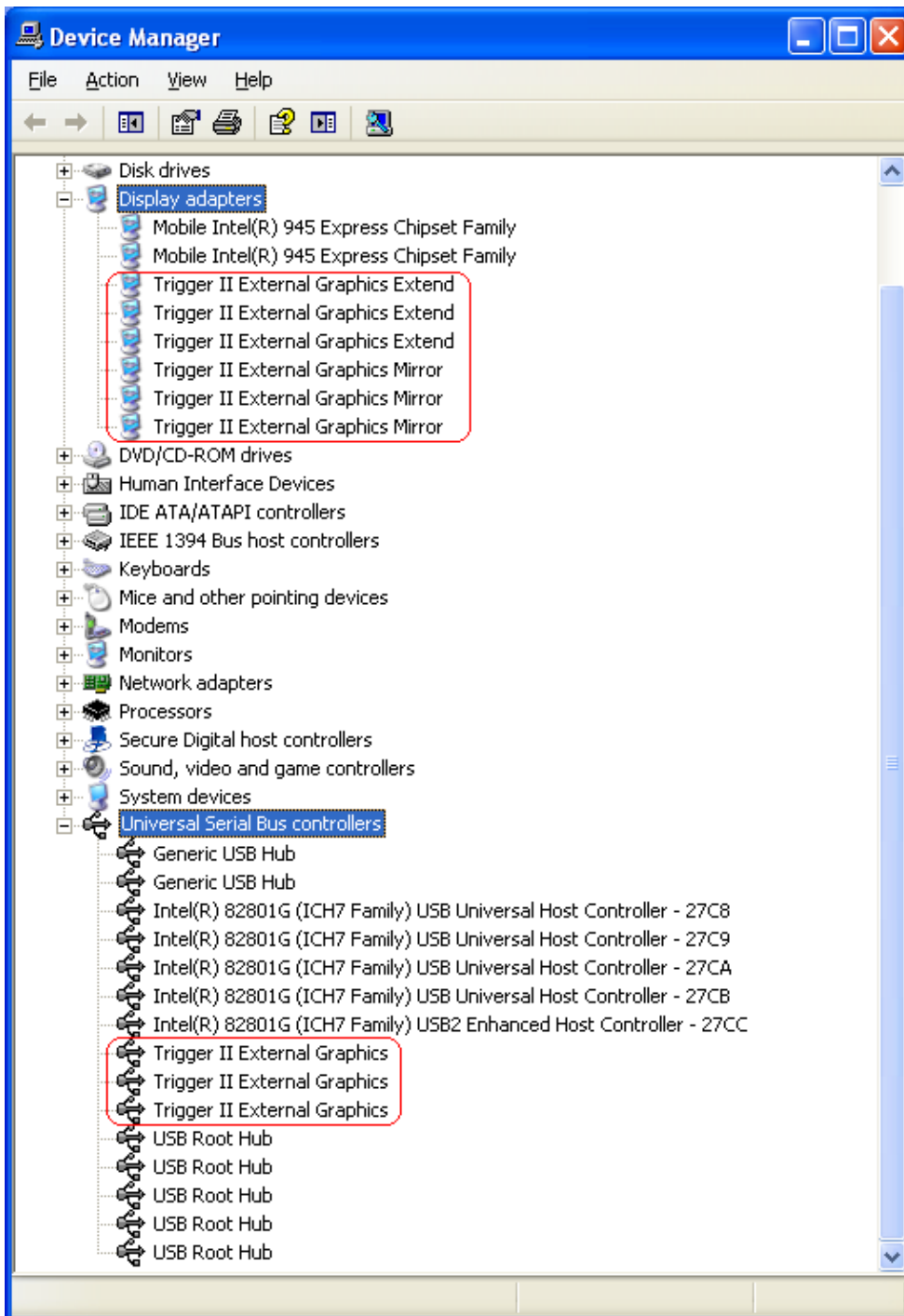
Please right click “**My Computer**” → “**Properties**” → “**Hardware**” → “**Device Manager**”.

Plug-in the **USB 2.0 DISPLAY ADAPTER**, then double click “**Display adapters**”, and “**Universal Serial Bus controllers**”. Begin verification by make sure highlighted devices were added to the system.

### ➤ Single USB 2.0 Display Adapter installation on the computer



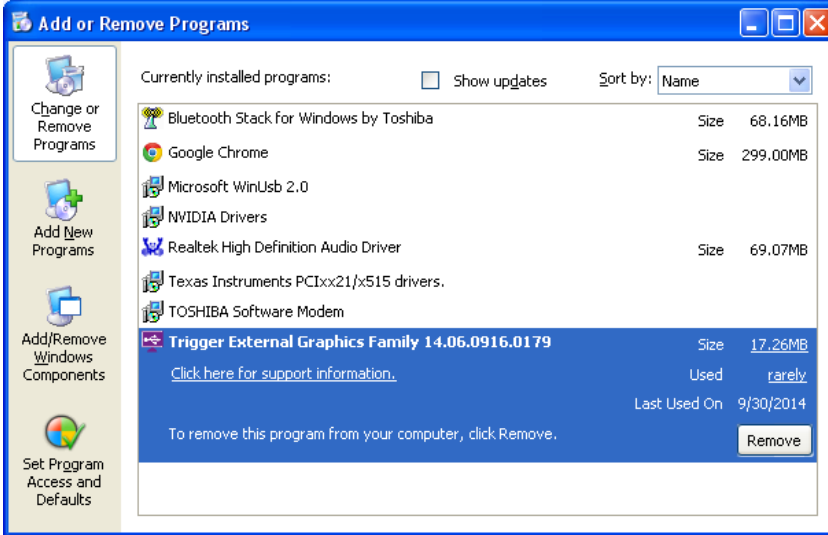
➤ **Multiple USB 2.0 Display Adapters installation on the computer**



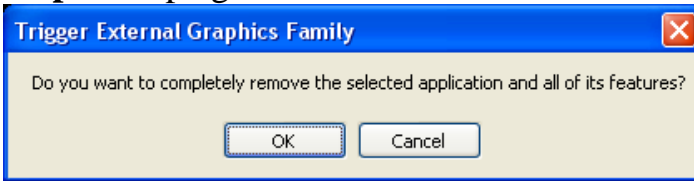
## DEVICE DRIVER UN-INSTALLATION

**Step 1.** Click “Start” → “Control Panel” → “Add or Remove Programs”

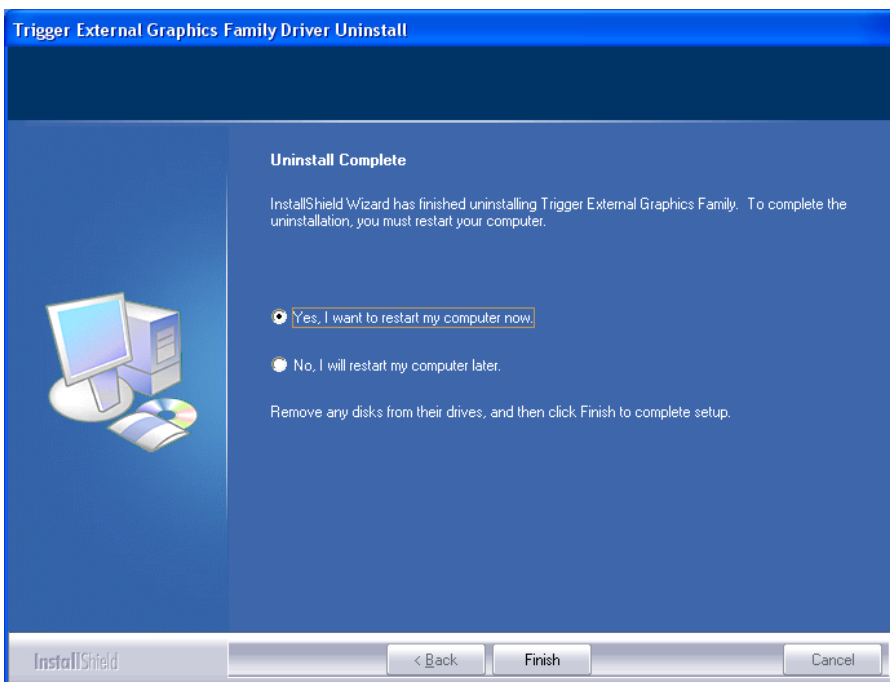
Select “ Trigger External Graphics Family 14.xx.xxxx.0179”.  
Click “Uninstall” button.



**Step 2.** Unplug the **USB 2.0 DISPLAY ADAPTER** and click “OK” to continue.





**Step 3.** Select “Yes, I want to restart my computer now” and click “Finish” to reboot.  
After reboot, you will complete the driver un-installation.



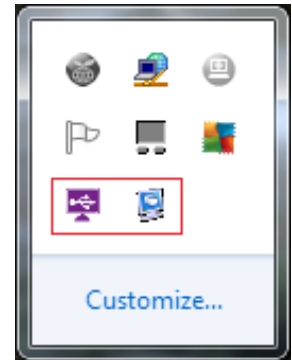
## FUNCTION DESCRIPTION

This section describes several friendly functions provided by the **USB DISPLAY ADAPTER** designed to ease your single or multiple USB display experience. A display device described in this section means devices such as monitor and projector...

### ACCESS USB DISPLAY ADAPTER UTILITY (WINDOWS 7/ 8/ 8.1)

Make sure the USB Display Adapter is attached to the PC, and will see two icons “Super Utility ” and “USB Display (Trigger) Utility ” on the taskbar.

Click these two icons to access the variety of functions associated to the USB Display adapter.



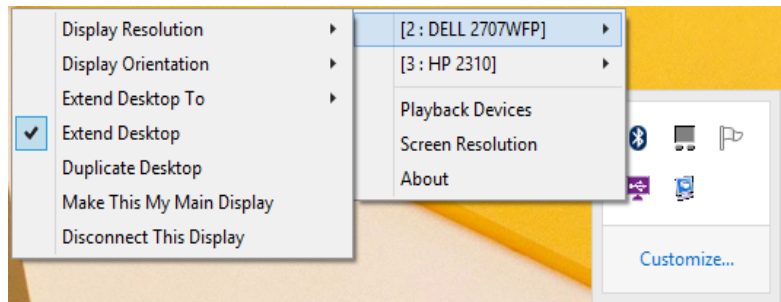
### USB Display (Trigger) Utility

- It won't be shown on the taskbar if the USB Display Adapter does not connect to the USB port of your PC.

### DISPLAY ID

– Smart Display Device ID Detection

USB Display Adapter supports VESA defined DDC/EDID. The utility will show the **display device ID** whenever it is attached to the USB Display Adapter.



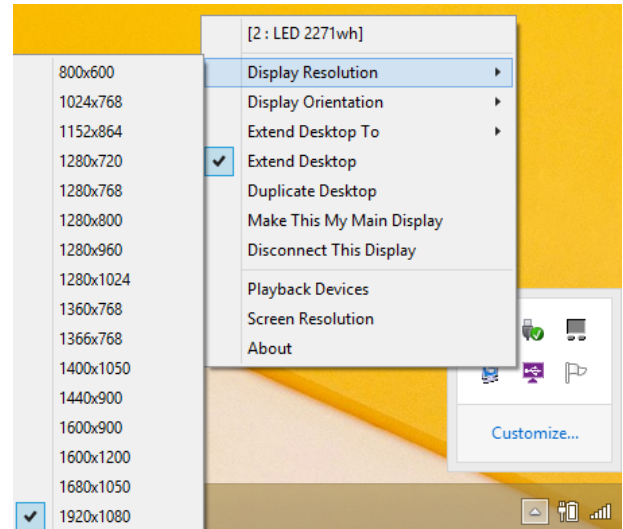
If there is no display device attached to the USB Display Adapter, a “**Generic**” ID will be shown.

In some cases, the attached display device does not support EDID, the ID will also be defined as “**Generic**”.

## DISPLAY RESOLUTION

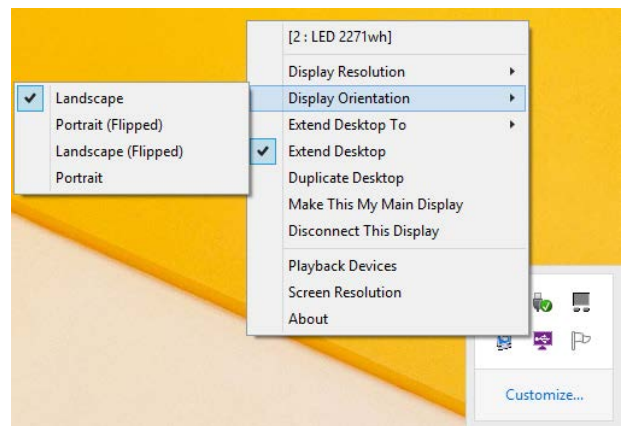
– Fast Access to Display Resolution Setting

The resolution list will show up when you move the cursor over “Display Resolution”. Select and click the resolution you want.



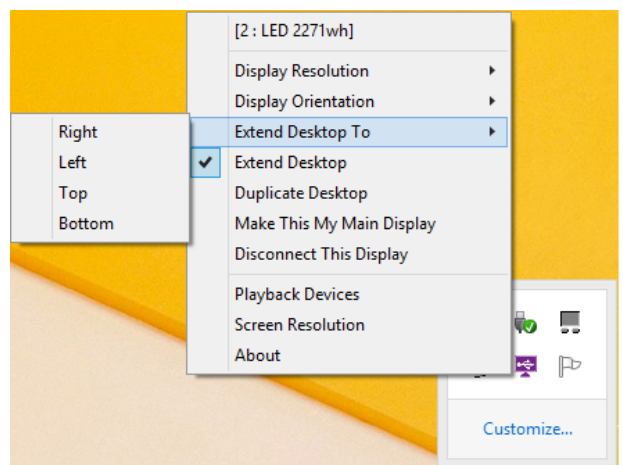
## DISPLAY ORIENTATION

There are four options available: “Landscape”, “Portrait (Flipped)”, “Landscape (Flipped)”, and “Portrait” that under the extended or primary display mode.



## EXTENDED DESKTOP TO

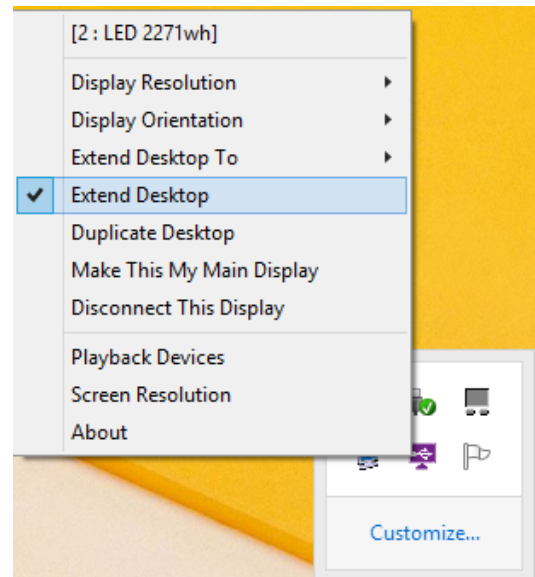
To adjust the position of extended display to be “RIGHT”, “LEFT”, “TOP”, or “BOTTOM”.



## DISPLAY MODE

### ◆ “EXTEND DESKTOP” (DEFAULT)

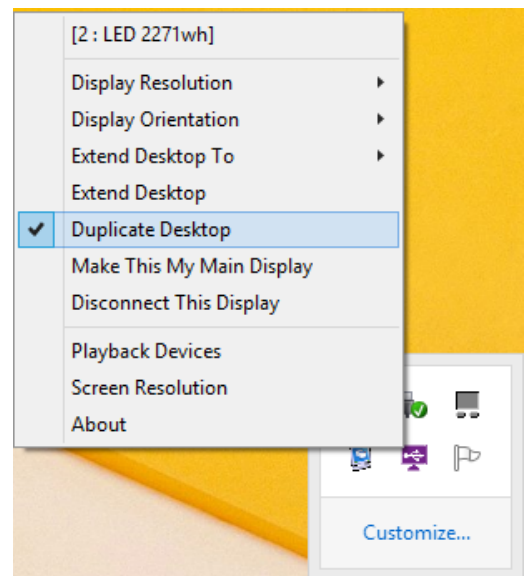
A default display mode, this feature allows the attached USB Display enable display device to work as “Extended” display of the on-board screen.



### ◆ “DUPLICATE DESKTOP”

This feature allows the same contents of on-board screen to be displayed (mirroring) to the USB Display enabled display device. For example, the on-board screen’s resolution is 1024x768x32bit, and the USB Display enabled device will set as the same resolution.

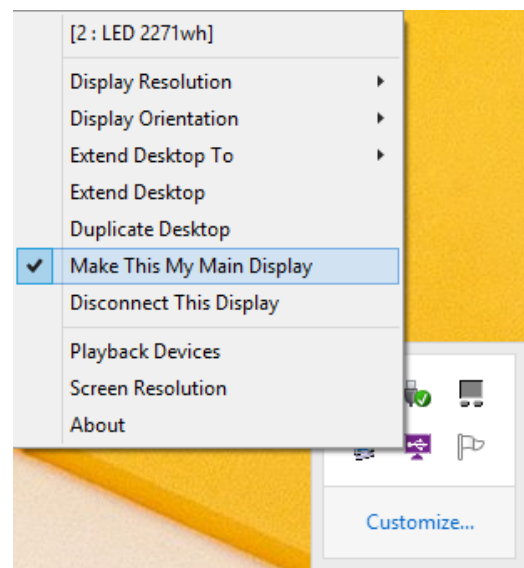
Be note when “Duplicate Desktop” is selected, the function of “Display Orientation” will be disabled automatically.



### ◆ “MAKE THIS MY MAIN DISPLAY”

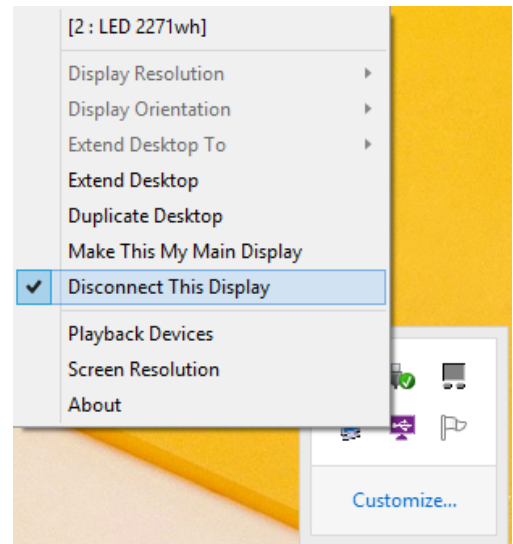
This feature allows USB Display enabled device to act as the main display. The on-board screen will work as the extended display.

Please be advised that some display utility and drivers that shipped with certain AGP and built-in display adapters may prevent this option from working on some Windows XP systems. You may disable the other utility program (usually found in the same taskbar located on the bottom right corner) to make this function work properly.



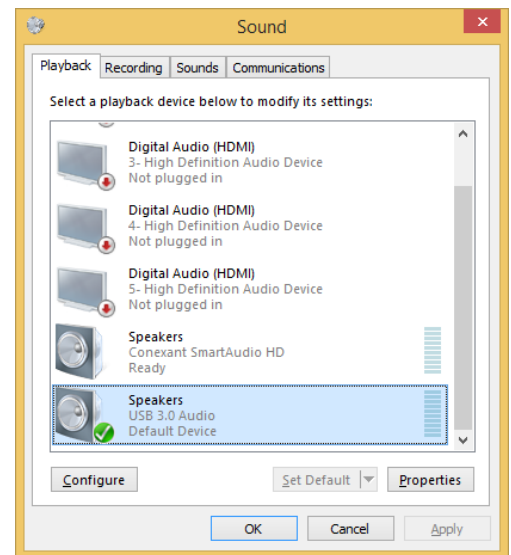
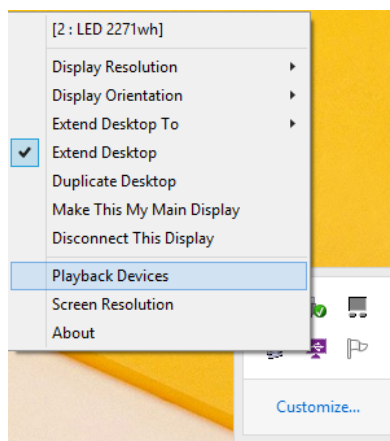
◆ **“DISCONNECT THIS DISPLAY”**

This option disables the video output from **USB DISPLAY ADAPTER**.



◆ **“PLAY BACK DEVICE”**

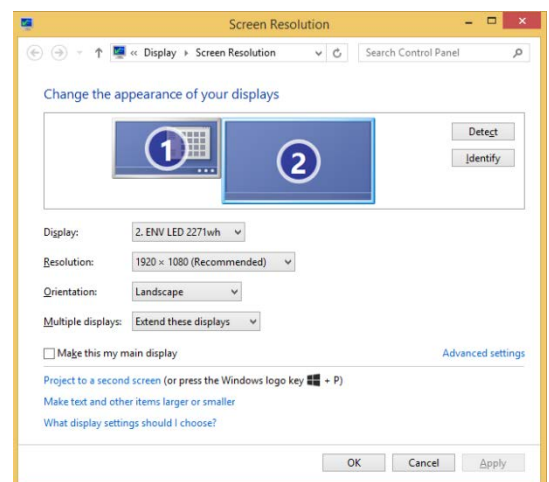
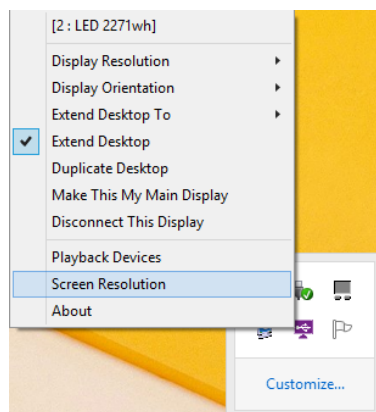
Fast open to the system **“Sound”**.



\*The USB Audio is the default audio output when connects with USB HDMI Display Adapter.

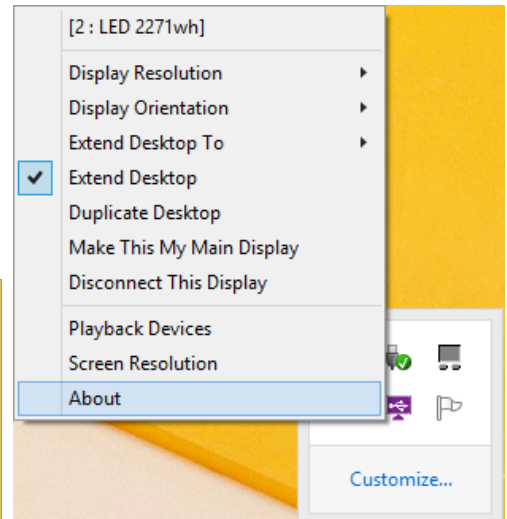
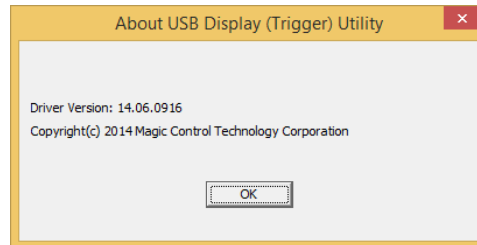
◆ **“SCREEN RESOLUTION”**

Fast access to the system **“Screen Resolution”**



◆ “ABOUT”

To check the current driver version.

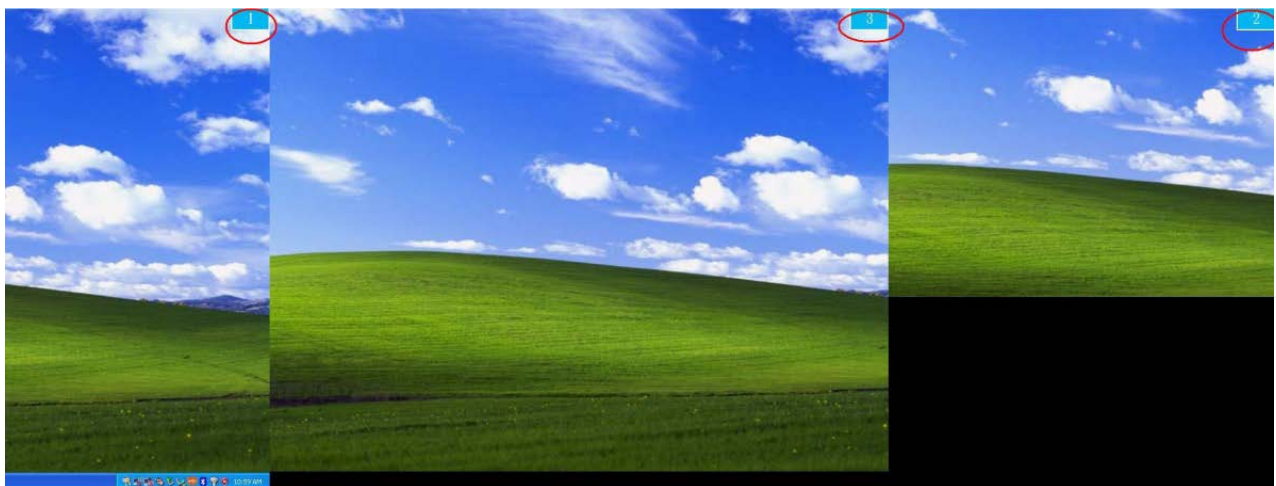
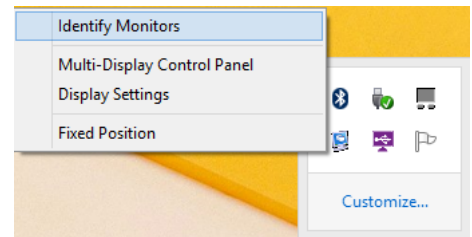


**Super Utility** 

- It will be shown on the taskbar once you installed the driver.

◆ IDENTIFY MONITORS

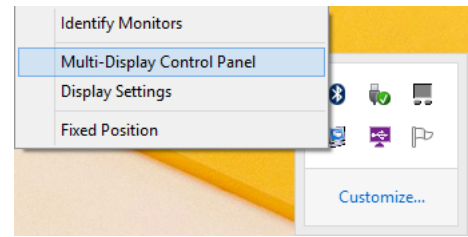
Easy display identification via a serial number will be showed on the upper right corner of all attached display devices.





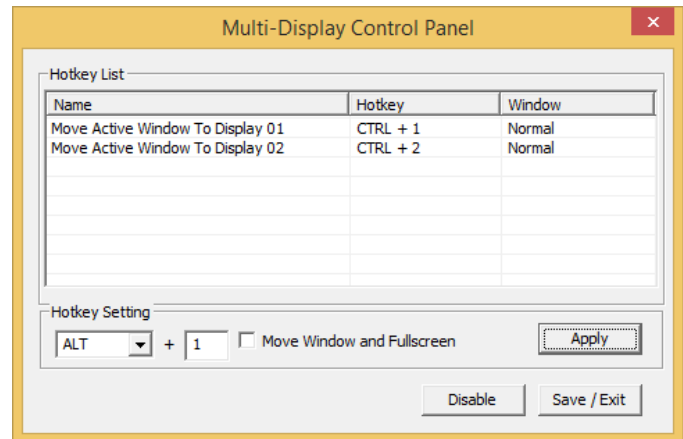
◆ **MULTI-DISPLAY CONTROL PANEL**

An unique feature to allow much quicker and simpler working experience under multi-display environment. A series of hotkey to quickly move active window or cursor to the desired display device (either on-board or each USB Display enabled devices).



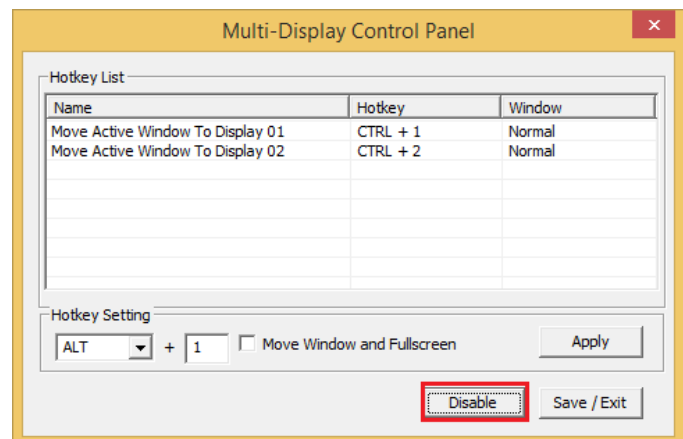
The default setting of hotkeys can be found on the Hotkey List of “Multi-Display Control Panel”.

For example: **Ctrl + 2** means: to move the window to the Display 2.

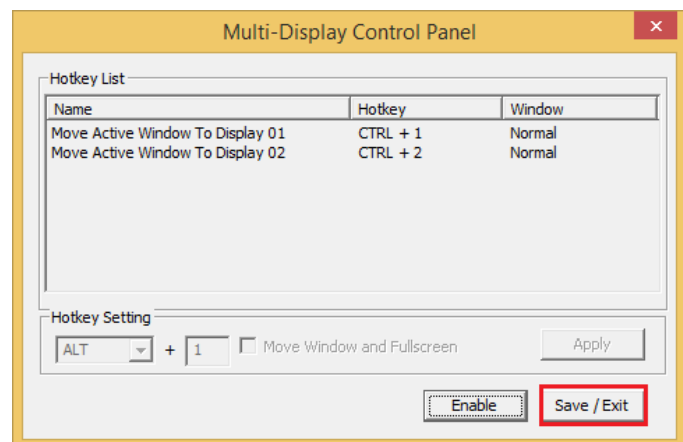


**To disable the Multi-display Control Panel function:**

1. Click “**Disable**”.

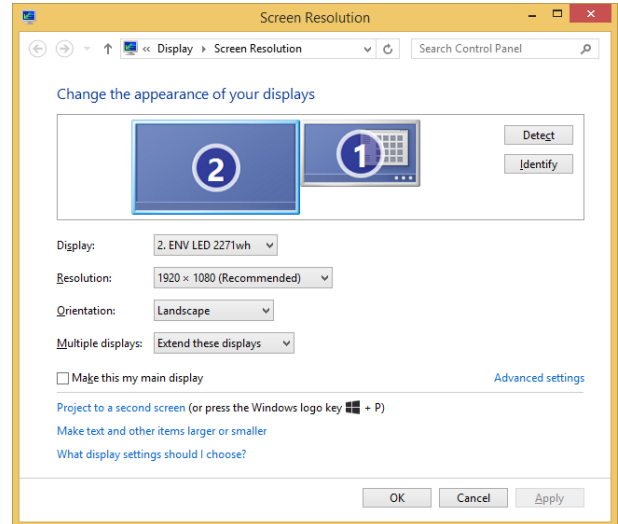
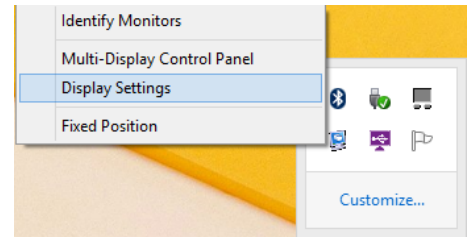



2. Click “**Save/Exit**” to exit the control panel. You have disabled the Multi-display Control Panel (hotkey) function now.

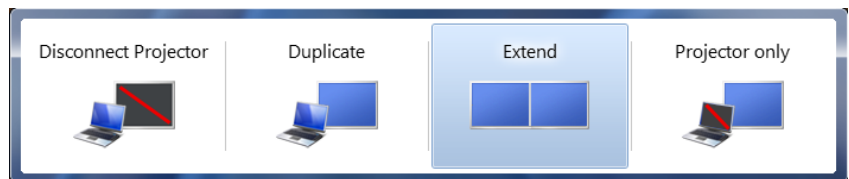


◆ **DISPLAY SETTINGS**

Fast access to the system “Screen Resolution”.

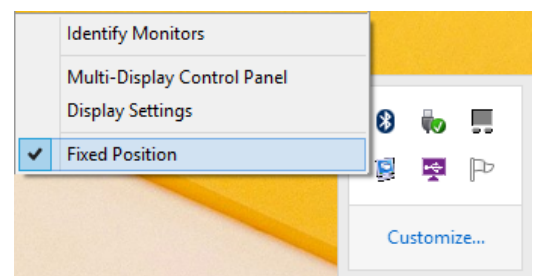


You also can press  key and tap **P** to select the display modes on Windows 7/ 8/ 8.1 directly.



◆ **FIXED POSITION**

It remains the prior setting of display location after restart the computer.



---

## Q&A

---

This section describes the common Q&A regarding to the installation or operation of the USB 2.0 DISPLAY ADAPTER.

**Q:** Why can't I make the USB 2.0 DISPLAY ADAPTER the primary display?

**A:** Some video cards ship their product with a utility that prevent other video cards from being set as the primary card. Check the bottom right hand corner taskbar for the utility. Disable the utility before switching our adapter to be the primary display.

**Q:** Why won't my DVD player work when I move it over to the extended display?

**A:** Some DVD playback software packages do not support playing on a second display adapter of any kind. You may try to open the program in the secondary display first before playing the DVD.

**Q:** Why does my mouse not move pass the right side of the screen as it should on extended desktop?

**A:** Check the display settings and make sure that your display number '2' is on the right side of display number '1'. You can rearrange how Windows treats each display in relation to each other in the Display Properties Settings.

**Q:** There are lines running horizontally up and down my screen.

**A:** This is due to a low refresh rate setting. You can change this in the Display Properties Settings Advanced Monitor. Make sure you select the USB 2.0 DISPLAY ADAPTER first and not set the refresh rate higher than what your monitor can support. This may damage your monitor. You can also try to reset/refresh/resynchronize your monitor.

**Q:** Direct3D does not work?

**A:** This is a limitation of the adapter on Windows XP/ Windows Vista.

---

## **TROUBLESHOOTING TIPS**

---

This section describes the general troubleshooting tips regarding to the installation or operation of the USB DISPLAY DEVICE.

### **Known Issues**

- It is prohibited to install the other USB to Graphics drivers (example: DisplayLink software) at the same Windows operating system.
- Graphics card drivers are up to date.
- Direct 3D is not supported under Windows XP/Vista (supports the XPDM).
- Do not support Standard VGA graphics Adapter.

### **General Recommendation**

- Check to make sure that the device is plugged in correctly to the host system.
- Unplug the USB cable of USB graphics device and re-insert it.
- Check to see that the monitor is connected correctly and is powered ON.
- Make sure to restart your computer after the driver installation.
- Try a different USB port and/or computer.
- Unplug all other USB devices from the system.
- Try connecting the USB cable of USB graphics device to the computer directly (not via the USB Hub).
- Reset/refresh/resynchronize your monitor.

### **Media Playback**

- During video playback on all platforms, please do not change the display mode, position or arrangement of video player window (such as dragging the video player window between main display and attached display). This usually causes the video player to have strange behavior and the video may stop playing. We suggest stopping the video playback, moving the window to the USB graphics device attached display and then selecting the video clip to start playing.
- Downsizing your screen landscape lower than 50% will help smooth out jerky video playback for video running in full screen model.
- You may experience poor video performance on USB graphics device attached display under some low-spec PC system.
- Video rendering using hardware overlays is supported.
- Some DVD playback software packages do not support playing on a second display adapter of any kind. You may try to open the media player in the secondary display first before start playing the



DVD.

- Your PC may be lack of certain video codec to support playback of certain video format. Please use the link below to install license free media codec.

**K- Lite:** [http://www.free-codecs.com/download/K\\_Lite\\_Codec\\_Pack.htm](http://www.free-codecs.com/download/K_Lite_Codec_Pack.htm)

- Video/Media players have different decoding capability under different display modes. For better performance on watching DVD or certain video format on the USB graphics device attached display, it is recommended to use the following license free software.
- **Windows Media Player 10 or above**
- **Media Player Classic:** <http://sourceforge.net/projects/guliverkli/>

## Others

- Some graphics card, i.e. Intel, prevents other secondary graphics chipset from being set as the primary card. As the result of this, **Primary mode** might not work or the display maybe disabled.
- If you have problems during the boot up process, start your computer in Safe Mode and uninstall the driver. Hold the CTRL key until the Windows startup menu appears and select Safe Mode.
- To verify the driver version that you installed, please click “Control Panel” → “Add or Remove Programs” to check the program:  Trigger External Graphics Family 14.xx.xxxx.0179 (the Number: 14.xx.xxxx.0179 means the driver version) or click the **About** of USB Display (Trigger) Utility  icon at the taskbar.
- Please contact your dealer to obtain the latest driver or for additional assistance if needed.

---

## REGULATORY COMPLIANCE

---

### FCC

This equipment has been tested and found to comply with Part 15 of FCC Rules for Class B Devices (United States Code of Federal Regulation 47 Part 15-Digital Devices, Subpart B-Unintentional Radiators, Class B).

### CE

This equipment is in compliance with the requirements of the following regulations:

EN 55022 : 2008-05 Class B

EN 55024 : 2003-10

EN 61000-4-2 : 2001-12

EN 61000-4-3 : 2006-12

### C-Tick

This equipment is in compliance with the requirements of the following regulations:

AS / NZS CISPR22:2006

### VCCI

This equipment is in compliance with the requirements of the following regulations:

EN 55022: 2008-05 Class B

### Disclaimer

Information in this document is subject to change without notice. The manufacturer does not make any representations or warranties (implied or otherwise) regarding the accuracy and completeness of this document and shall in no event be liable for any loss of profit or any commercial damage, including but not limited to special, incidental, consequential, or other damage. No part of this document may be reproduced or transmitted in any form by any means, electronic or mechanical, including photocopying, recording or information recording and retrieval systems without the express written permission of the manufacturer.