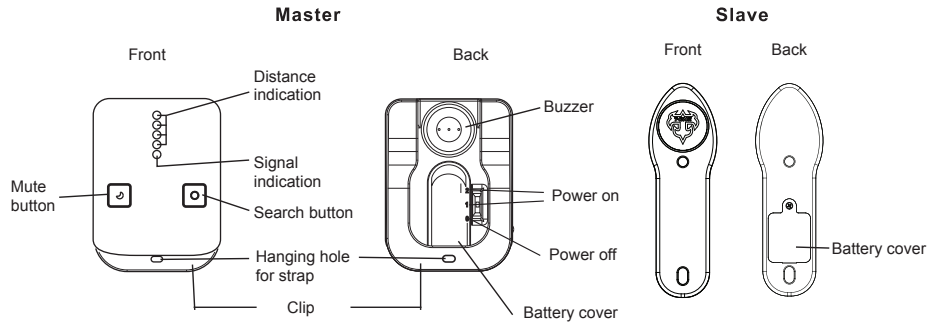


# Undercover User Manual

## Front & Rear View



## Specifications

| Model Name                     | T-EP01                           |                                   | T-EP02                           |                                   |
|--------------------------------|----------------------------------|-----------------------------------|----------------------------------|-----------------------------------|
| Function                       | Search, Alarm, 1 to 1            |                                   | Search, Alarm, 1 to 1            |                                   |
| Search Range                   | 0~120m/328ft                     |                                   | 0~200m/546ft                     |                                   |
| Alarm Distance                 | Prolonged Vibration of 3 second  |                                   | Prolonged Vibration of 3 second  |                                   |
| Master/Slave                   | Master (M05S)x1                  | Slave (S07A)x1                    | Master (M05A)x1                  | Slave (S07A)x1                    |
| Battery Type                   | LR44                             | CR2032                            | LR44                             | CR2032                            |
| Battery Life Time with Standby | 50 days(8 hrs)                   | 60 days(8 hrs)                    | 30 days(8 hrs)                   | 60 days(8 hrs)                    |
| Battery Life Time with Sleep   | Over 90 days                     | Over 90 days                      | 90 days                          | Over 90 days                      |
| Beep Sound (at 10cm/3.9inch)   | 95 db                            | 102 db                            | 95 db                            | 102 db                            |
| Bulid-in                       | None                             | Vibration Sensor                  | None                             | Vibration Sensor                  |
| Dimension (L/W/H)              | 52.8x39x13.2mm<br>2x1.6x0.52inch | 38x120x6.2mm<br>1.5x4.72x0.24inch | 52.8x39x13.2mm<br>2x1.6x0.52inch | 38x120x6.2mm<br>1.5x4.72x0.24inch |

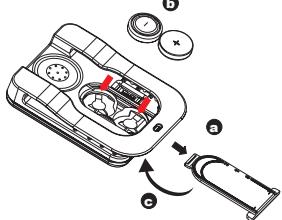
## Package Contents

| Model Name  | T-EP01/T-EP02      |
|-------------|--------------------|
| Master      | 1 set              |
| Slave       | 1 set              |
| Batteries   | LR44x4<br>CR2032x2 |
| User manual | ✓                  |
| Strap       | ✓                  |

## Getting Start

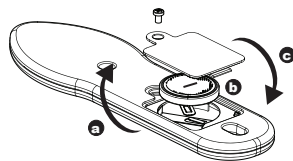
1. For first time use, please insert the batteries into the Master and the Slave sets according to the battery installation as follows.

### -Master



- Slide out the battery cover.
- Insert the batteries. Make sure that the polarity +/- of the battery follow the markings on the bottom of the battery compartment.

### - Slave



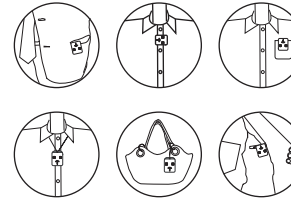
- Place the battery cover back.

2. Mark sure the Master is powered OFF in the first place and install the Slave on the bike (in case the alarm is triggered while installation) take the Master with you or clip it on your belt.

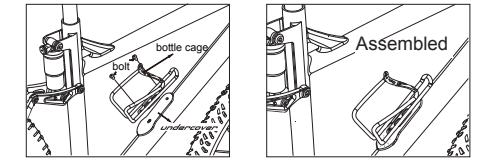
3. Switch the power button of the Master to "ON".

## Preferred setting place

### Master

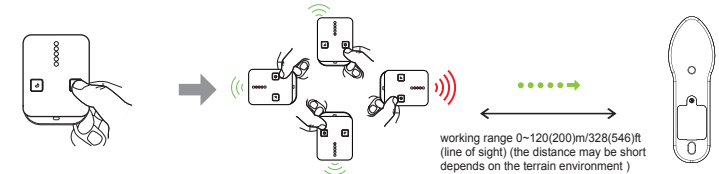


### Slave



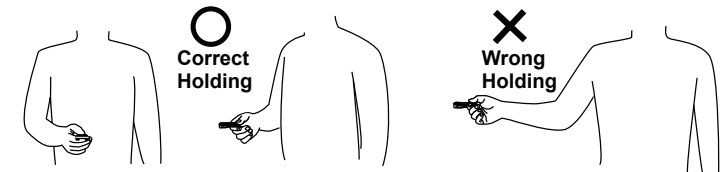
## Search

For searching the Slave unit, please press the "Search button" on the Master unit once. If the distance between the Master and the Slave is closer, more LED lights are lit and the melody from the Master becomes more rapid. Contrarily, if the distance between the Master and the Slave is farther, less LED lights are lit and the melody from the Master becomes slower. Use the LED and the melody indication as guides to find the Slave unit.



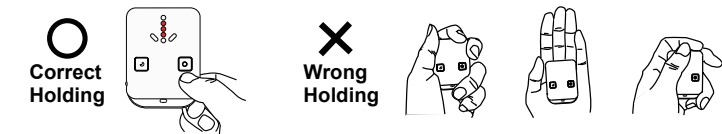
- Important:**
- Under search mode, always place the Master in front of your body and turn to different directions to check the signal. If you point at the right direction, The master will show lights and plays the melody more rapidly
  - If the distance between the Master and the Slave is out of detectable working range and you are turning into the wrong direction making the distance farther, the Master plays the melody and beeps every second to remind you to go back to the right direction and detectable distance ASAP.
  - If you want to stop the search mode, press the "Search button" on the Master unit once.
  - While searching, the Slave makes low beep sounds every second. This can assist you in finding its position by tracking the sound when the Master and the Slave are already close. (Suggestion: Press and hold the mute button on the Master to turn off the melody temporarily. Once you release the mute button, the searching melody resumes again.)

## During Search



\*\*\* Do not sway Master. Master is always in front the body when take a turn.

## Holding Way



\*\*\* Do not cover the top side of Master.

## Alarm

A sensor is built-in to detect the vibration, while someone is trying to move your bike, the Bike Guard will alert you in 3 second.

Master&Slave will alarm for 5 seconds and repeat alarm until vibration is stop.

Disarm Alarm:

Under standby mode, turn OFF the Master unit within 3 meters from your bicycle and wait for the approval sound "Di-du" on Master unit. When you hear "Di-du", you have disarmed Bike Guard.

## Mute

Press the Mute button to mute searching melody from the Master unit. Listen to beep sound from the Slave unit to assist short range searching.

## Wake up / Standby

- a.) Switch Master & Slave power On, Master will enter wake-up process. The Signal indicator, right and left LEDs blink while Master is waking Slave up within 8~15 seconds if Slave is within range and NOT being blocked. After Slave been woken up, Master enters Search mode. Press Search key to go back to Standby mode.
- b.) Under Standby mode, Master's LED blinks every second. When wake-up, Master enters Search mode automatically. If Master cannot wake-up Slave within 160 seconds, due to out of range or signal is blocked, it will enter Standby mode and beeps to indicate lost signal. User can push Search key to enter wake-up process again.

**Important:** Please turn off the Master unit if NOT in use to save battery life.

## Out of range or Loss signal

- a.) Master beeps, vibrates and signal LED blinks for 160 seconds out of range or loss signal; then Master will enter sleep mode automatically.
- b.) master beeps once a minute (to remind user to switch power OFF for Master unit for power-saving.)
- c.) To wake-up Master, press Search button to go to wake-up process.

## Low battery

When the Master and Slave is under low battery condition, it will beep at a 2 minutes interval, please change the battery.

**Important:** Under low battery condition, it may cause abnormal function of alarm or searching.

## Please Note

- a.) The connection range is based on clear line of sight. Actual range will vary depending on user's environment and location.
- b.) When the Master and Slave units are turned ON, it takes 8 to 15 seconds for the synchronization.
- c.) The signal will be disconnected while the Master and Slave units are too close within 10 cm (the signal connection will be overloaded). When the Master unit can't connect to Slave unit, Master unit alarms every second and Slave unit's LED light flashes.

## Care and Maintenance

- a.) The Slave units are water-repellent, but not waterproof!  
**Keep the device dry.** Precipitation, humidity, and all types of liquids or moisture can contain minerals that may corrode electronic circuits. If your device gets wet, remove the battery, and allow the device to dry completely before replacing it.
- b.) Do not use or store the device in dusty, dirty areas as its moving parts and electronic components can be damaged.
- c.) Do not store the device in hot areas. High temperatures can shorten the life of electronic device, damage Batteries, and warp or melt certain plastics.

- d.) Do not store the device in cold areas. When the device returns to its normal temperature, moisture can form inside the device and damage electronic circuit boards.
  - e.) Do not attempt to open the device other than as instructed in this guide.
  - f.) Do not drop, knock or shake the device. Rough handling can break internal circuit boards and fine mechanics.
  - g.) Do not use harsh chemicals, cleaning solvents, or strong detergents to clean the device.
  - h.) Do not paint the device. paint can clog the moving parts and prevent proper operation.
  - i.) Do not put the master and the Slave at same place in case of this kit is unable playing functions to guard your valued goods.
  - j.) Search, detection, and alarm range depend on the terrain environment.
  - k.) If the beep sound is not loud enough, the batteries may be low. Change with new batteries for louder alarm sound.
  - l.) This product only assists in providing a warning alarm to remind the user. It does not guarantee to prevent theft or robbery of personal property.
  - m.) If you want to use the device during flight trips, please comply with the flight safety law according to each country.
  - n.) We reserve the right in changing the specification of the hardware and software designs to manuals at any time and without prior notice. Information in this document is subject to change without notice.
  - o.) This product operational temperature is between 32°F ~131°F (0°C~50°C). Storage Temperature is between -4°F~185°F (-20°C~85°C).
- Recycle: The Batteries provided in this product should be recycled to protect the local environment. Please contact your local recycle department for detail.
- Warning: Do not put the batteries into the fire or heat sources.  
It may cause danger or even explosion.

## FCC Certifications

Federal Communication Commission Interference Statement

This equipment has been tested and improved to comply with the limits of a Class B digital device, pursuant to Part 15 of the FCC Rules. These limits are designed to provide reasonable protection against harmful interference in a residential installation. This FCC Certifications equipment generates, uses and can radiate radio frequency energy, if installed and used not in accordance with the instructions, may cause harmful interference to radio communications.

However, there is no guarantee that interference will not occur in a particular installation. If this equipment does cause harmful interference to radio or television reception, which can be determined by turning the equipment off and on, the user is encouraged to try to correct the interference by one of the following measures:

- Reorient or relocate the receiving antenna.
- Increase the separation between the equipment and receiver.
- Connect the equipment into an outlet on a circuit different from that to which the receiver is connected.
- Consult the dealer or an experienced radio/TV technician for help.

This device complies with Part 15 of the FCC Rules. Operation is subject to the following two conditions:

(1) This device may not cause harmful interference, and (2) this device must accept an interference received, including interference that may cause undesired operation.

FCC Caution: Any changes or modifications are not expressly approved by the party responsible for compliance which could void the user's authority to operate this equipment.

## EU Declaration Conformity

This product is carrying the CE-Mark in accordance with the related European Directives.

91E-T1B6-U50G01

