



JU-SOFT

HOP EDITOR

USER MANUAL April, 2013 Revision1.0

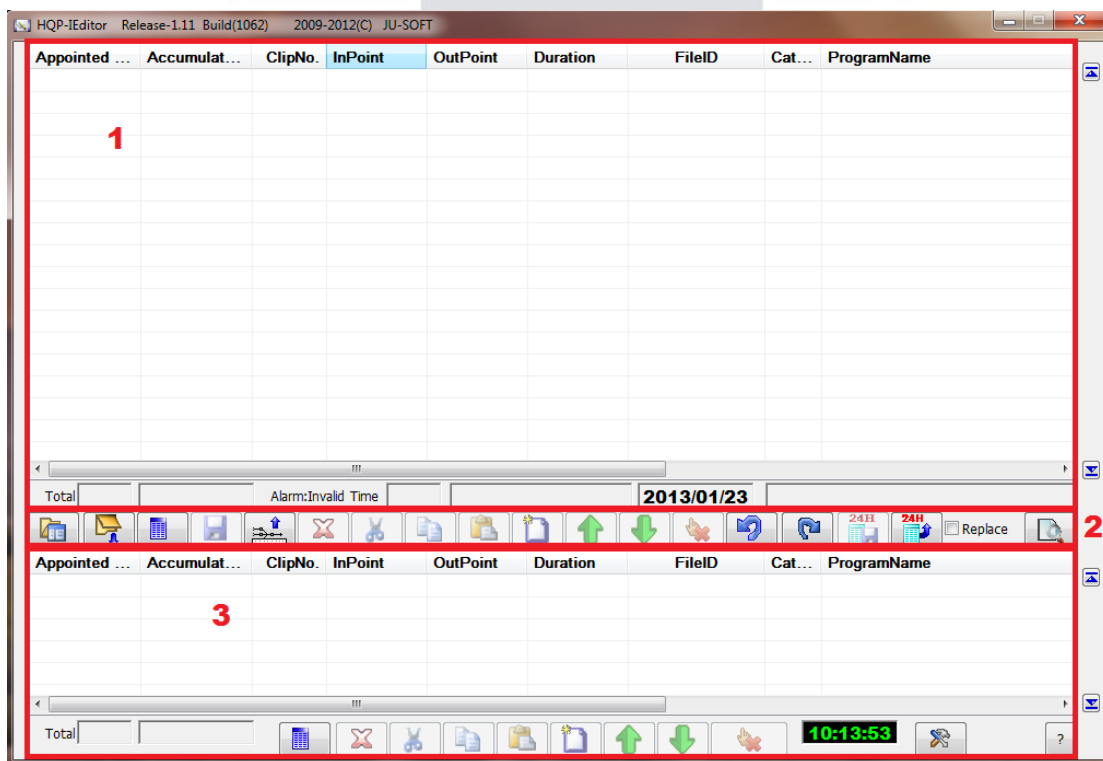
Contents

1. HQP-IEditor Main Window.....	3
1.1 Playlist Editing Area.....	4
1.1.1 Columns of the playlist	4
1.1.2 Introduction of background colors in the playlist.....	8
1.1.3 Display and Alarm area	9
1.2 Editing tool.....	10
1.2.1 How to add clips from VLib.....	12
1.2.2 How to add clip(s) from file explorer	13
1.2.3 How to load a playlist to current playlist	14
1.2.4 How to save a Daily-Playlist	16
1.2.5 How to use spare playlist	18
1.2.6 How to adjust the length of the video clip	23
1.2.7 How to replace a clip	23
1.3 Temporary Editing Area.....	25
2. Program Database	26
2.1 Searching Results Displaying Area	26
2.2 Query Conditions Setting Area	27
2.3 Selected Files Displaying Area	28
3. Configuration	29
3.1 Select In Point and Out Point of a clip	31
3.2 Dynamically select In Point and Out Point.....	32
4. Emergency Import Video	34

1. HQP-IEditor Main Window

HQP-IEditor is a scheduling program that supports the HQP-1000 high definition television broadcasting system. It can link to the HQP-1000 program database and carry out playlist editing, as well as supporting remote database connections. The main window may look like the following:

- Operating Interface



- (1) . Schedule playlist
- (2) . Tool bar
- (3) . Schedule cache

1.1 Playlist Editing Area

1.1.1 Columns of the playlist

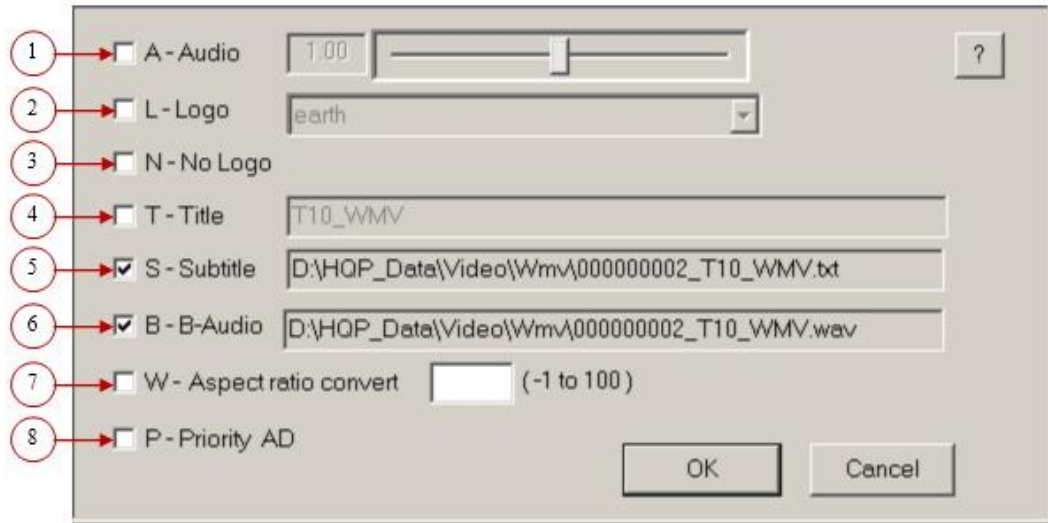
1	2	3	4	5	6	7	8	9
Appointed ...	Accumulat...	ClipNo.	InPoint	OutPoint	Duration	FileID	Category	ProgramName

Pg_Logo	Rt_logo	Property	Remark
---------	---------	----------	--------

10 11 12 13

【1】 Fields

- (1) **Appointed Time:** You can appoint specific time for a video clip.
Double click the field to reset play time.
- (2) **Accumulated Time:** It shows the play time of each clip accumulated for the appointed time of the first clip.
- (3) **Clip No.:** Sequential numbers are given to video clips for the convenience of examining clip order. However, the numbers don't belong to the clips.
- (4) **InPoint:** Double click this field, and then can set the starting point to broadcast the clip from any part of it.
- (5) **OutPoint:** Double click this field, and then can set the ending point to stop the clip from any part of it.
- (6) **Duration:** The playing length of this program list.
- (7) **Field ID:** 9 digit ID number generated by VLib when the clip is imported to the database. Users are not allowed to edit it.
- (8) **Category:** It displays the category of each clip represented by letters.
- (9) **Program name:** The name of the clip. It can be set as title and shown on the screen. Double click to change the name.
- (10) **Pg_logo:** Double click to cancel or change Targa file of the program logo of the clip.
- (11) **Rt_logo:** Double click to cancel or change Targa file of the rating logo and title.
- (12) **Property:** Double click to set properties of each clip such as volume, channel logo and title. The details are as follows.



①

ProgramName	Pg_Lo...	Rt_Logo	Property	Rem..
T10_WMV				Before
ProgramName	Pg_Lo...	Rt_Logo	Property	Rem..
T10_WMV			A_____	After

After the box is checked, users can adjust the volume of the selected clip by dragging the toggle, and the letter “A_____” will be shown on Property field.

②

ProgramName	Pg_Lo...	Rt_Logo	Property	Rem..
T10_WMV				Before
ProgramName	Pg_Lo...	Rt_Logo	Property	Rem..
T10_WMV			_L_____	After

After the box is checked, users can change “channel logo” from the drop down list, and the letter “_L_____” will be shown on Property field.

③

ProgramName	Pg_Lo...	Rt_Logo	Property	Rem..
T10_VMV				Before
ProgramName	Pg_Lo...	Rt_Logo	Property	Rem..
T10_VMV			_N_____	After

After the box is checked, “channel logo” will not be shown on the screen, and the letter “_N_____” will be shown on Property field.

④

ProgramName	Pg_Lo...	Rt_Logo	Property	Rem..
T10_VMV				Before
ProgramName	Pg_Lo...	Rt_Logo	Property	Rem..
T10_VMV			__T_____	After

After the box is checked, Program Title will be shown on the screen, and users can edit the title from the box on the right side. The letter “__T_____” will be shown on Property field.

⑤

ProgramName	Pg_Lo...	Rt_Logo	Property	Rem..
T10_VMV				Before
ProgramName	Pg_Lo...	Rt_Logo	Property	Rem..
T10_VMV			___S___	After

After the box is checked, Subtitle will be overlaid on the video, and the letter “___S___” will be shown on Property field.

⑥

ProgramName	Pg_Lo...	Rt_Logo	Property	Rem..
T10_VMV				Before
ProgramName	Pg_Lo...	Rt_Logo	Property	Rem..
T10_VMV			____B_	After

After the box is checked, the “secondary language audio file” will be attached with the video clip, allowing users to broadcast Dual Language Program in a “four-channel” audio format, and the letter “____B_” will be shown on Property field.

⑦

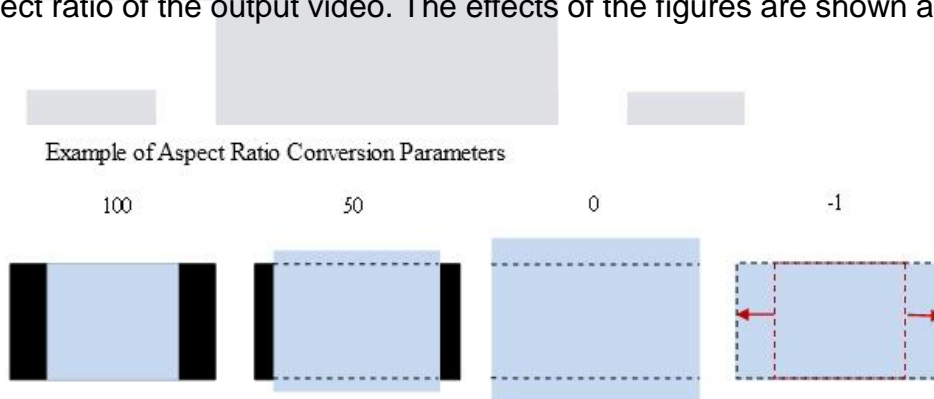
ProgramName	Pg_Lo...	Rt_Logo	Property	Rem..
T10_WMV				

Before

ProgramName	Pg_Lo...	Rt_Logo	Property	Rem..
T10_WMV			___W...	

After

After the box is checked, SD 720x480 or SD 720x576 video are acceptable in an HD playout mode. When playing out, the 4:3 SD video will be automatically resized to 1920x1080 16:9. The letter “___W_” will be shown on Property field. Users can fill up figures from -1 to 100 to fine tune the aspect ratio of the output video. The effects of the figures are shown as below.



【100】: Keep aspect ratio 4:3 and display it originally on 16:9 screen, and two vertical black bars will be added on both sides of the video to fill up the remaining part of the screen. The vertical size of the video is preserved.

【1~99】: Small parts in the top and the bottom of the video will remain off the screen. HQP will cut video image which exceed screen boundary (top and bottom). Thinner vertical black bars will appear on both sides.

【0】: The horizontal size of the video will be preserved. Video will be cut equally on the top and in the bottom.

【-1】: The vertical size of the video will be maintained. Video will be expanded equally toward the left and right side. The original ratio will be changed.

⑧

ProgramName	Pg_Lo...	Rt_Logo	Property	Rem..
T10_VMV				Before
ProgramName	Pg_Lo...	Rt_Logo	Property	Rem
T10_VMV			_____P_	After

After the box is checked, you can set Priority of Commercial Playback. And the letter “_____P” will be shown on Property field, as the image above.

The priority setting will be for the first commercial in the “Live Commercials Loop Block”. This property is especially for the scenario from Live-In feed switching to Commercial clips. It enables the commercial loop playing back started from the first one with “_____P” priority setting.

(13) **Remark:** Enter any text in the remark field.

1.1.2 Introduction of background colors in the playlist

Different background colors have their own meanings.

Appointed ...	Accumulat...	ClipNo.	InPoint	OutPoint	Duration	FileID	Category	ProgramName
1.	00:00:00:00	1	00:00:00:00	00:00:20:00	00:00:20:00	000000006	B. commercial AD	CM-1
2.	00:00:20:00	2	00:00:00:00	00:00:19:29	00:00:19:29	000000007	B. commercial AD	CM-2
3.	00:00:39:29	4	00:00:00:00	00:01:00:02	00:01:00:02			@Live[2]-Live-in
4.	00:01:40:01	5	00:00:00:00	00:01:00:02	00:01:00:02			@LoopStart
	00:02:40:03	6	00:00:00:00	00:00:20:00	00:00:20:00	000000008	B. commercial AD	CM-3
	00:03:00:05	9	00:00:00:00	00:00:00:00	00:00:00:00			@LoopEnd
5.	00:03:00:05	3	00:00:00:00	00:10:00:00	00:10:00:00			@Blank-Blank

〔 1 〕 . White is the default setting for all program of category.

Note: Background colors of the clips can be defined according to

category by clicking the Setup button “”, and there is more details in Chapter 3.

〔 2 〕 . Blue indicates the currently selected clip.

〔 3 〕 . Orange indicates the “live program”.

〔 4 〕 . Red indicates the start and end of the “loop block”.

〔 5 〕 . Pink indicates the virtual “blank clip”

1.1.3 Display and Alarm area




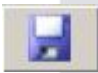

1			2		
Total	1	00:01:25:00	Alarm:Invalid Time		

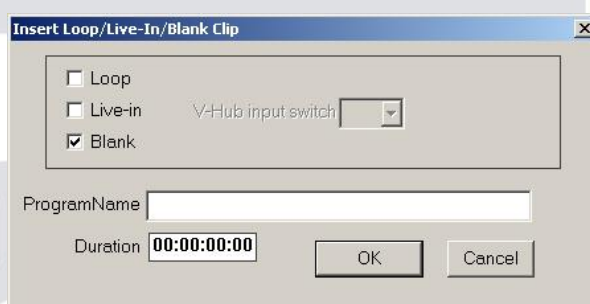
- [1] .Area 1 is to display the total amount of clips which have be played out and their total length of time.
- [2] .When the Appointed time is different from Accumulated time, the first row with the time difference will be shown here. The left column is for program code, and the right column is to show how much time is different.
- [3] .When there is time difference between appointed time and accumulated time, there will be 3 kinds of warnings as below to remind the operator.
- If the difference is around 1 frame to 1 second, there will be a warning message shown on the column.
 - If the difference is around 1 second to 1 minute, there will be a **red** warning message on the column.
 - If the difference is more than 1 minute, there will be a red **flashing** warning message on the column.




JU-SOFT

1.2 Editing tool


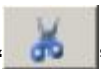




- [1] . : Add clip(s) from the VLib database.
- [2] . : Add clip(s) by using file explorer.
- [3] . : Reads scheduled playlist files saved disks. Select to replace schedules or append to current playlist.
- [4] . : Click to save the current playlist.
- [5] . : Open below dialog to insert a "Loop Block", a "Live-in", or a "Blank" clip.





- [6] . : User can select one or more clips on the main screen, and then press this button to delete the highlighted program list.
- [7] . : User can highlight clip(s) through single click or by multiple selections, and then press this button to cut the program list(s) onto the clipboard.
- [8] . : User can highlight program list(s) through single click or by


multiple selections, and press this button to copy the program list(s) to the clipboard.


- [9] . : Press “” and “” button to cut the selected program list onto the clipboard, and then use the mouse to highlight another program list slot (highlighted), then press this button to insert the program list on the clipboard in front of the highlighted program list. If program list is not highlighted before pressing this button to, then it is pasted to the bottom of the playlist.


- [10] . : Open an empty playlist.


- [11] . : Highlight a program list, and then press this button to move the highlighted program list upwards to adjust the order of the program list.

- [12] . : Highlight a program list, and then press this button to move the highlighted program list downwards to adjust the order of the program list.


- [13] . : Cancel selection of program list.


- [14] . : Restore, restore to previous editing of program list.

- [15] . : Cancel restore, reverse restore process.

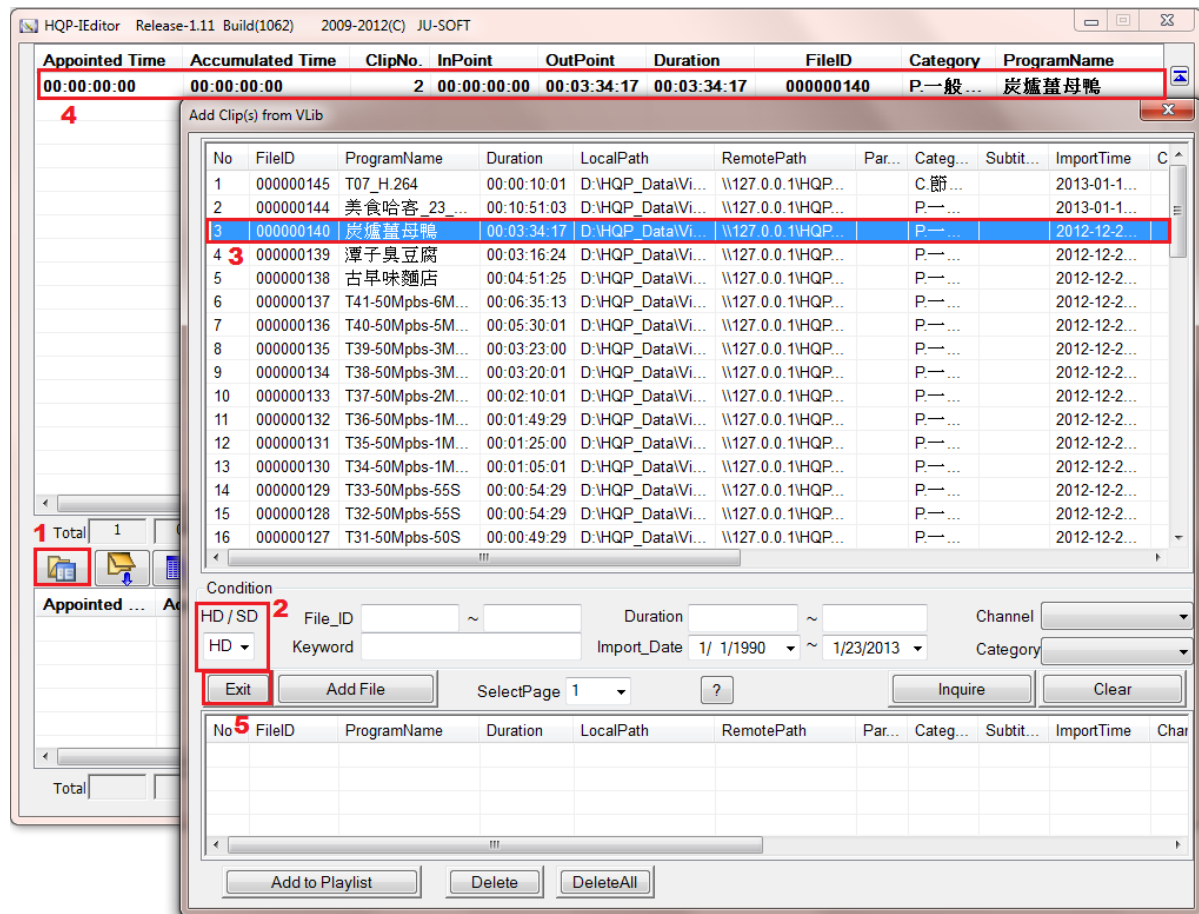
- [16] . : Save the currently edited playlist (24hr) onto disk.

- [17] . : Read saved playlist (24hr) on disk.

- [18] . : Tick the box to replace the selected clip and the same “File ID” clips of the list by a designate clip.


- [19] . : Click to check the completeness of the clips in the playlist, including the existence of the media clip and subtitle file. The checking result will be shown on a list.

1.2.1 How to add clips from VLib

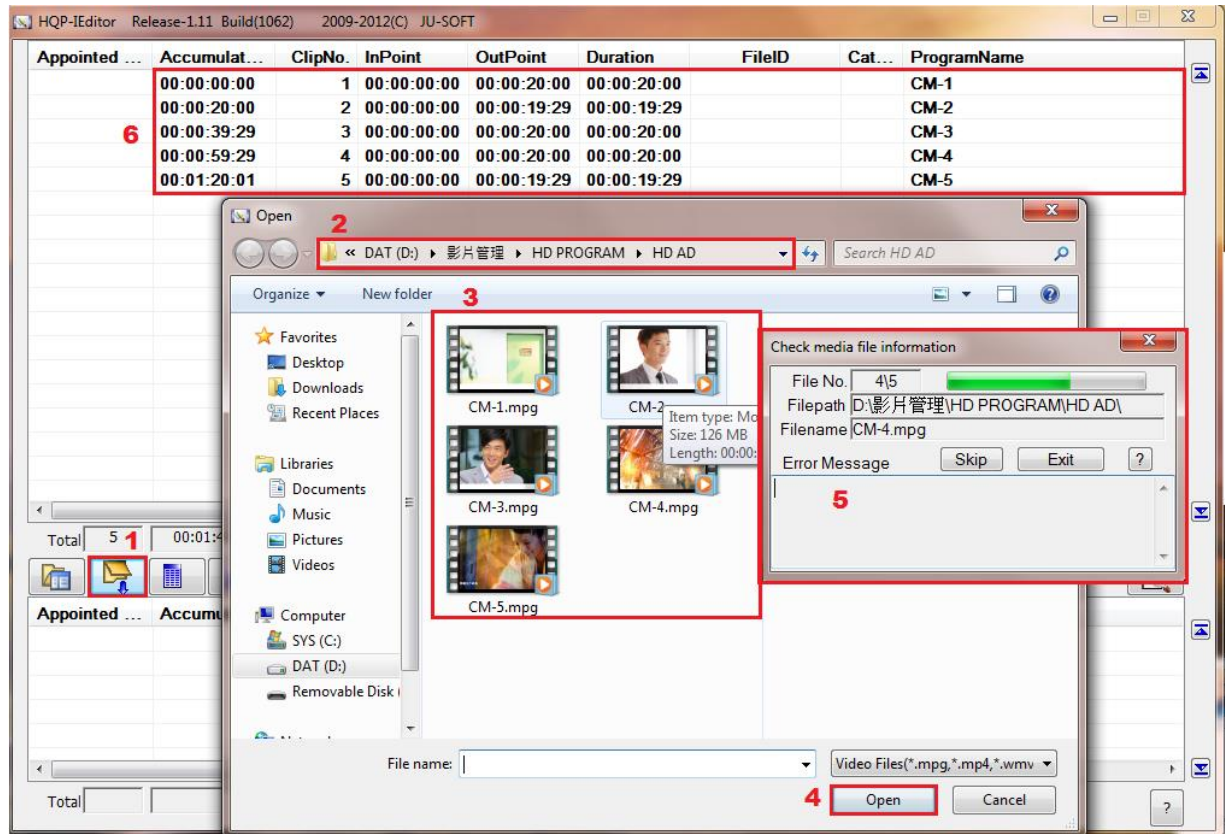


- [1] . Click to add clip(s) from VLib
- [2] . By the selection of HD or SD in the drop down list, user can choose the format searching for.
- [3] . Double clicks on designate clips
- [4] . Clip(s) will be added into playlist instantaneously
- [5] . Click "Exit" to leave dialog after selection.

P.S If you want to append the clip at the bottom of the playlist, please make sure none of the clip is selected. Or the new added clip will be inserted on the top

of the selected clip. So make sure de-select the clip by clicking  button before adding the new clip to the end of the playlist.

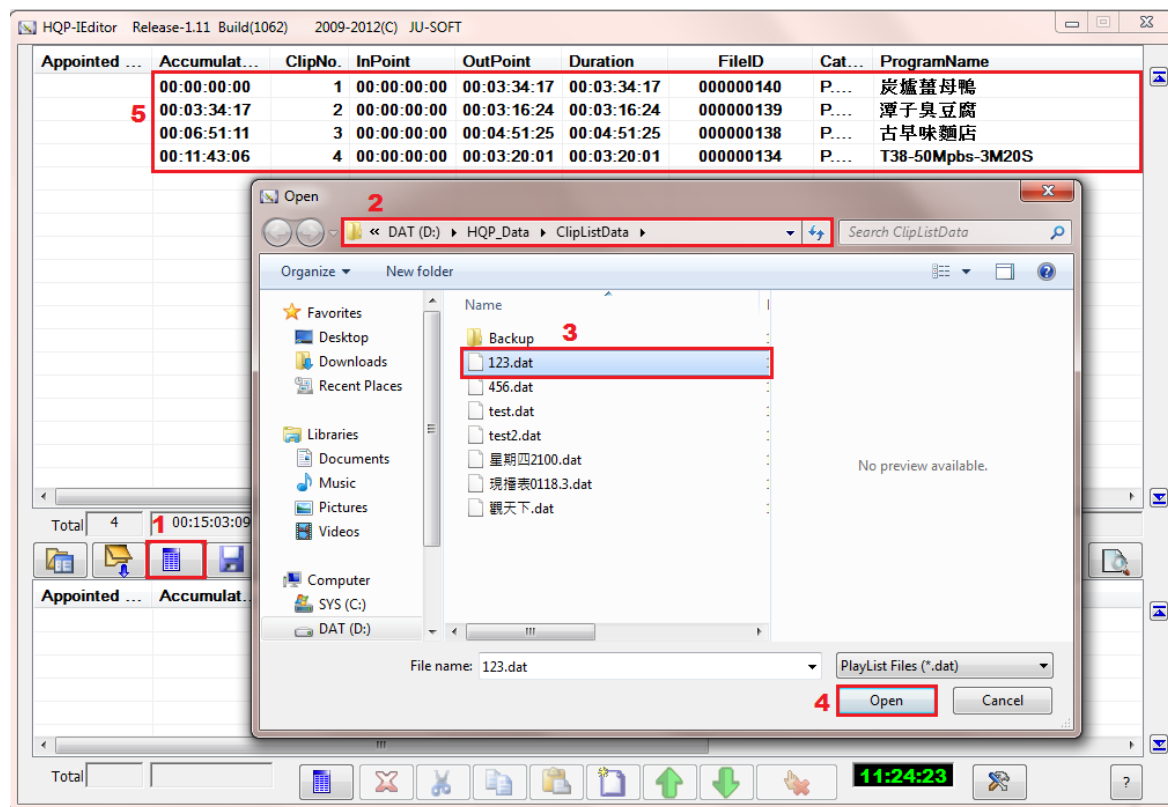
1.2.2 How to add clip(s) from file explorer



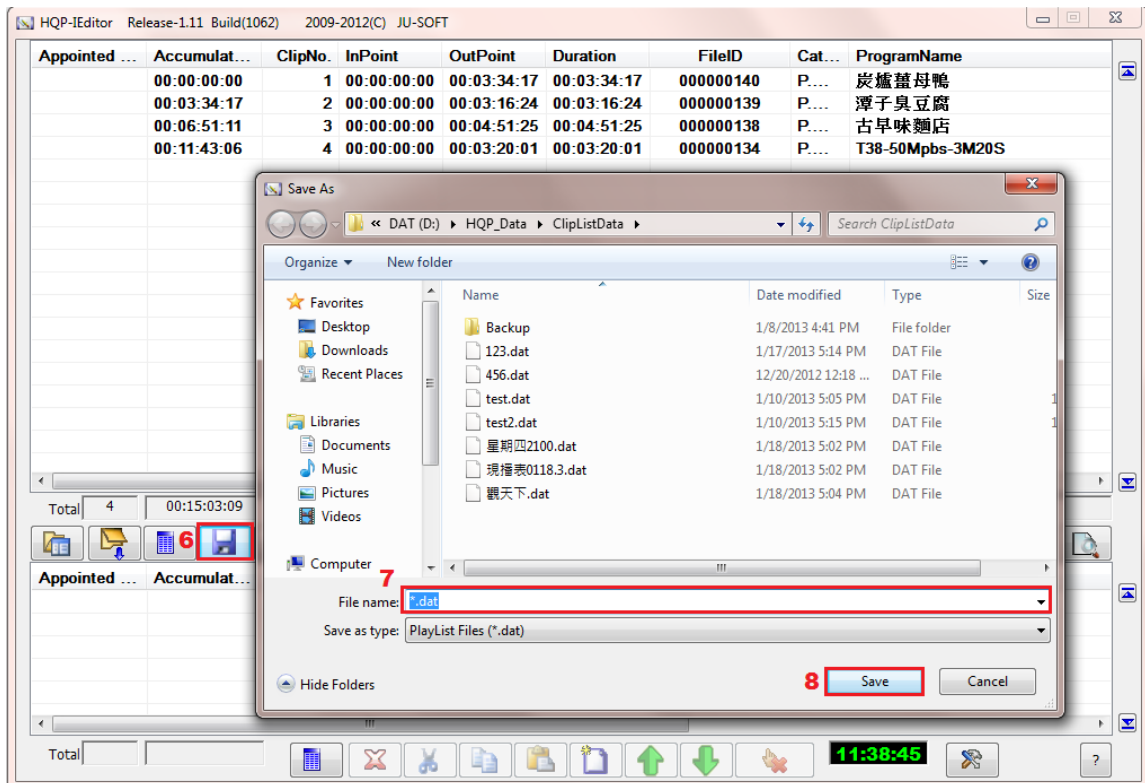
- [1] . Click to add clip(s) from file explorer.
- [2] . Choose the file path where clips are saved.
- [3] . Select designate clips.
- [4] . Click "Open" to add clips.
- [5] . Media check window will appear automatically to check clips.
- [6] . Clips will be added into playlist after checking.

1.2.3 How to load a playlist to current playlist

Users are allowed to load a playlist to edit, and save as another playlist.



- [1] . Click to load playlist.
- [2] . Choose the file path where playlist are saved (default setting: D:\HQP_Data\ClipListData).
- [3] . Select designate playlist.
- [4] . Click "Open" to load the playlist.
- [5] . The playlist will be displayed in schedule-playlist area.

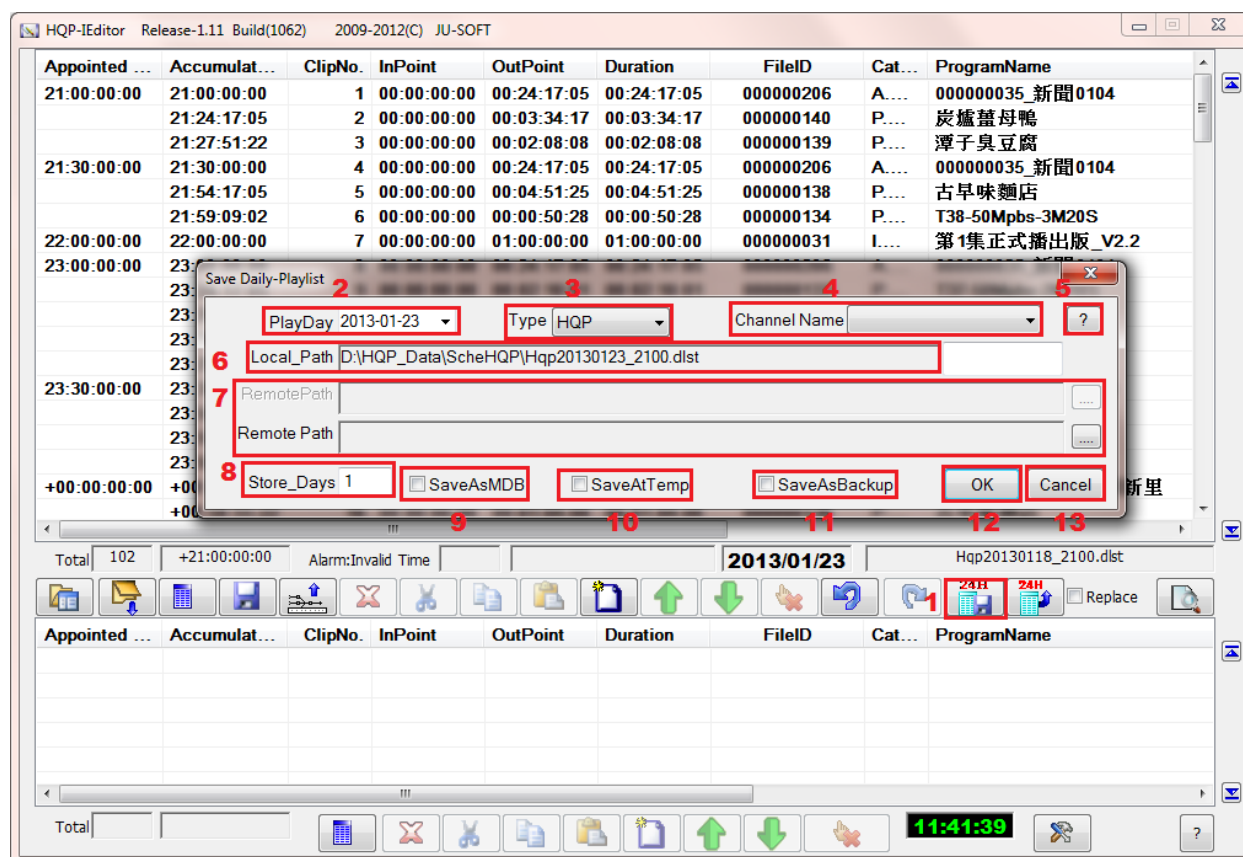


- [6] . Click on “Save Playlist”.
- [7] . Enter a name of the playlist.
- [8] . Click on “Save” to save current schedule list into hard disk.

JU-SOFT

1.2.4 How to save a Daily-Playlist

Users can save the playlist as a 24-hour Daily-Playlist after editing a full 24 hours playlist.



- [1] . Click on “Save Daily-Playlist”, and the dialog will pop up while saving the currently editing 24-hour Daily-Playlist. To save it as a Daily-Playlist, the total length must be 24 hours, and Appointed Time of the first media clip must be specified.
- [2] . Play Day: Click on the drop down list, and a calendar will pop up. Select the date you want to broadcast this Daily-Playlist, and it will also become the name of the file.
- [3] . Type: Select Daily-Playlist type from the drop down list.

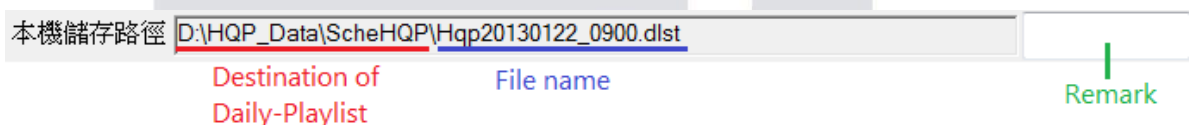


HQP : If user chooses HQP, the playout computer will automatically playout the video program according to the time on the playlist.

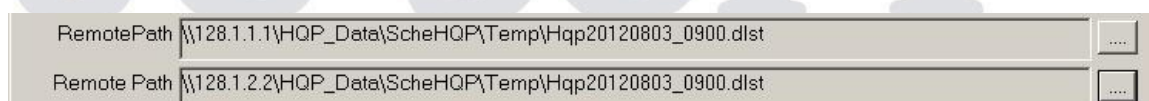
POT : If user wants to change the current playing 24h daily playlist from a remote computer, user can choose Type POT to save the playlist. By moving this playlist to a designated path for the playlist computer, the new 24h daily playlist can be automatically replaced the previous one at the specific appointed time.

- [4]. Channel Name: Select channel which the scheduled Daily-Playlist belongs to from the drop down list, and the playlist will be saved in designate directory in accordance with channel setting.
- [5]. On-line help button, click for more information.
- [6]. Local Path: File path of Daily-Playlist in local computer, which change with channel setting.

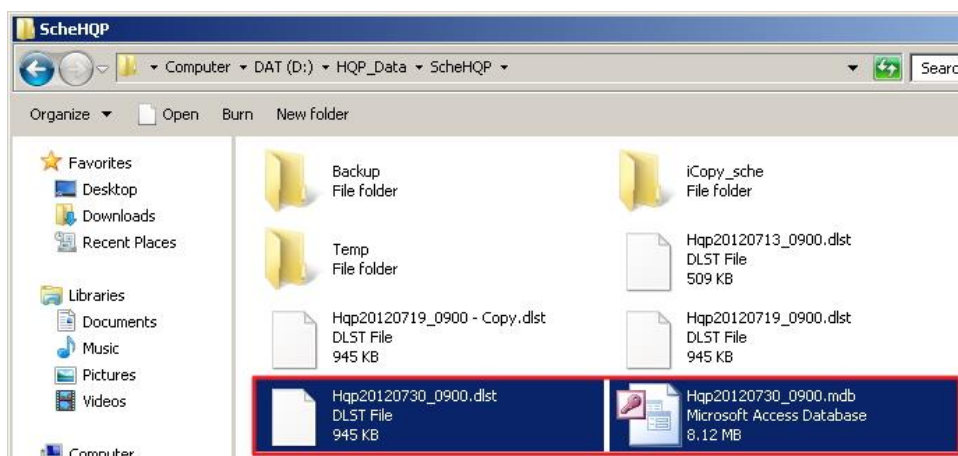
Note: After [Play Day] is set, file path of Daily-Playlist in local computer will be automatically generated, which cannot be changed. If the Daily-Playlist is to be broadcasted on 2012/07/30, and the Appointed Time of the first clip is at 9 o'clock, the name of the file will be [Hqp20120730_0900]. The extension of Daily-Playlist is [.dlst].



- [7]. Remote Path: Click the "...." button, and file path of Daily-Playlist in remote VLib server will be automatically generated, which alters in accordance with channel setting.



- [8]. Store Days: The 24h Daily-Playlist can be saved for one or several days. For example, if you type 2 in the box, the Daily-Playlist will be saved as two ".dlst." files named after dates starting from the current day (Hqp20120730_0900, Hqp20120731_0900). This function helps user to create the same daily-playlists quickly, and edit daily-playlist easily.
- [9]. Save As MDB: Tick the box, and an extra ACCESS format schedule will be exported immediately with the daily-playlist as the figure below.



- [10] . Save At Temp: Tick the box, and file path of Daily-Playlist will be saved in the “D:\HQP_Data\ScheHQP\Temp” directory.
- [11] . Save As Backup: Tick the box, and file path of Daily-Playlist will be saved in the “D:\HQP_Data\ScheHQP\Backup” directory.
- [12] . Click “OK” to save changes and exit.
- [13] . Click “Cancel” to exit without saving.

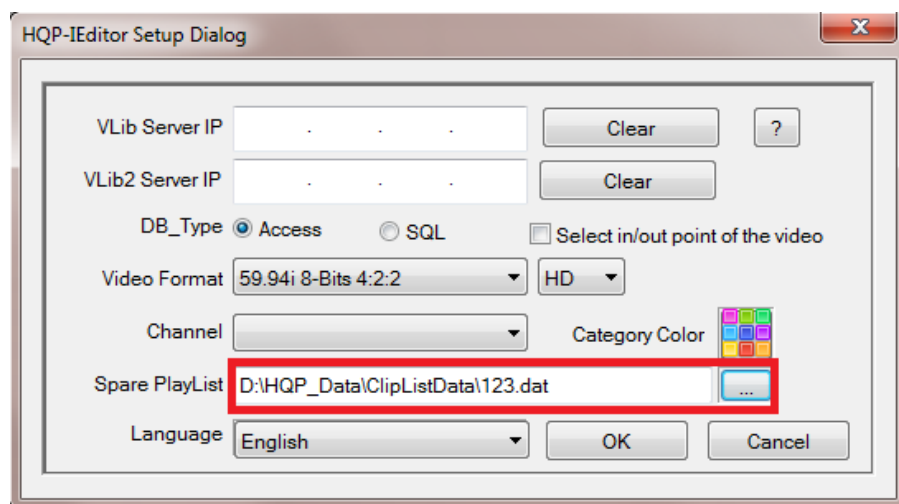
Note: If the program content is less than 24 hours, user can't save it as a 24h daily playlist. To solve this, User can take advantage of “Spare Playlist” (refer to 1.2.5), or adjusting the program length (refer to 1.2.6) to fill the playlist for exactly 24 hours.

JU-SOFT

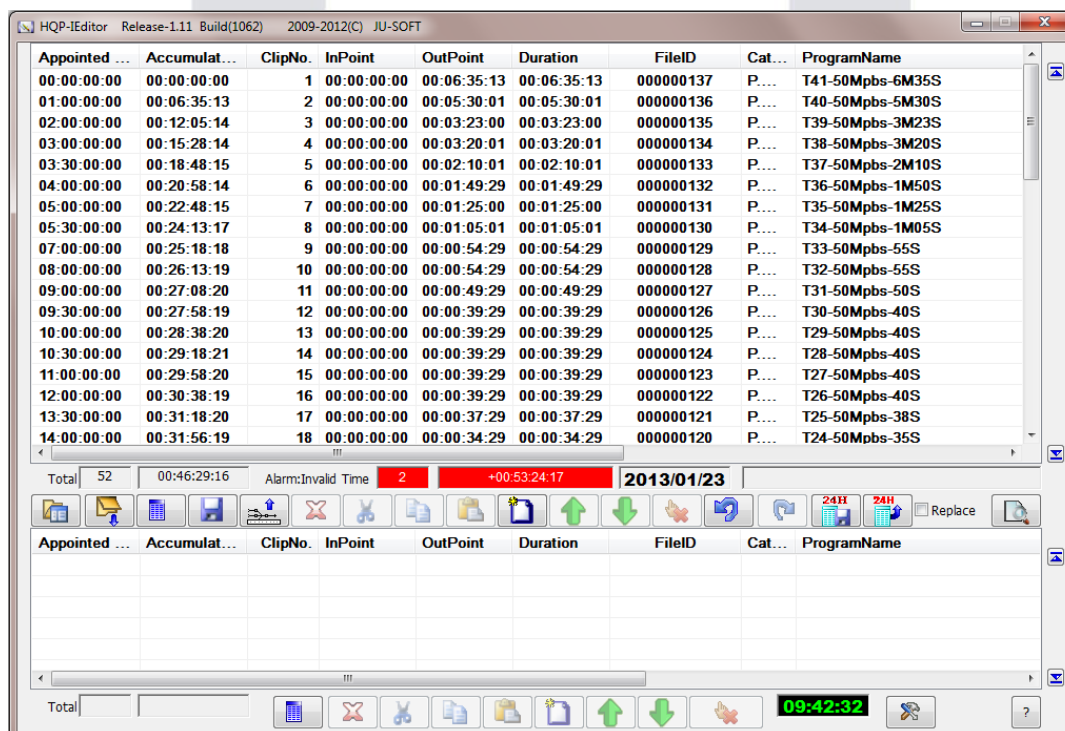
1.2.5 How to use spare playlist

Spare Playlist

1. Go to setup dialog, click  button to set the path for Spare Playlist.

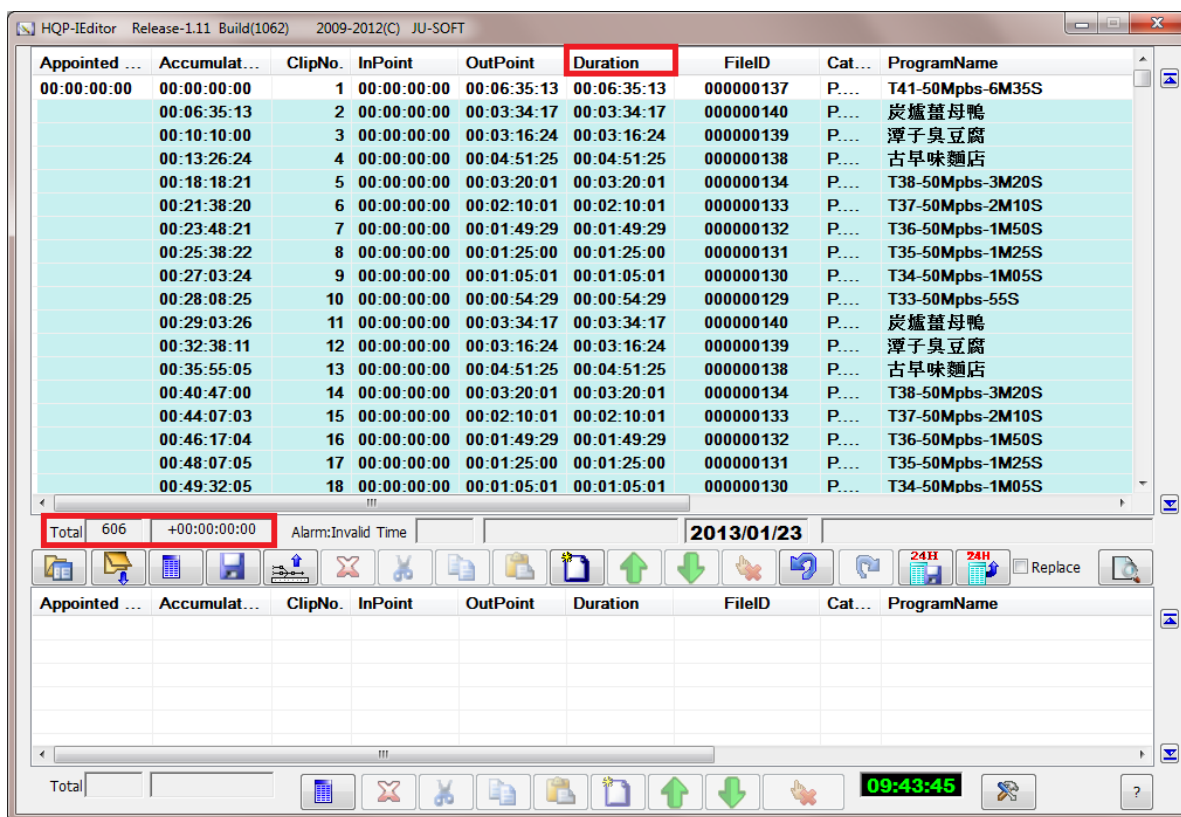


- Below playlist contains program contents which is less than 24 hours. In this example, User can open a spare playlist and fill up the gaps among each program. So to fill up 24 hours.




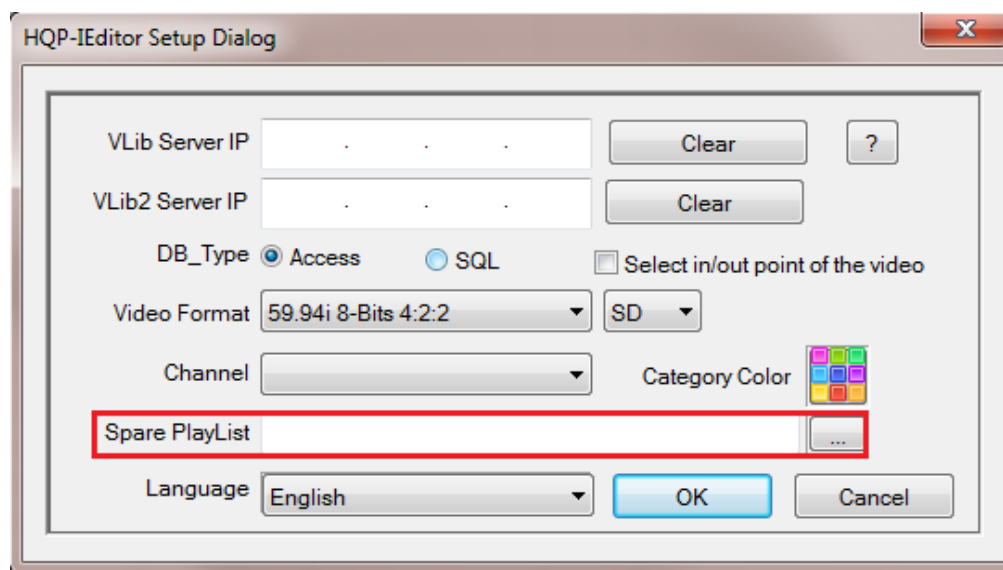
- Click on the column title "Duration" shown as below picture. If the content is not enough 24 hours, the software will fill up the insufficient time for every appointed schedule using the content in the "Spare playlist" until the total time amount is

exactly 24 hours. (The following picture shows content from the spare playlist, shown with light blue background color, is added to fill up 24 hours.)



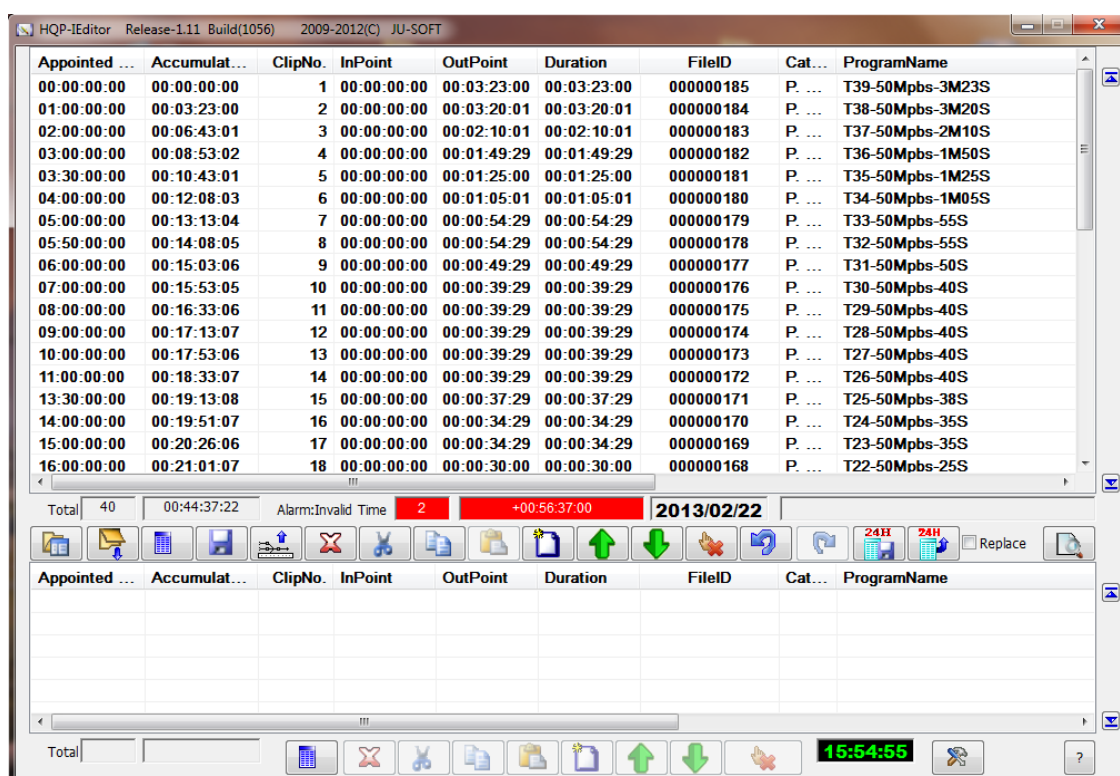
Blank clip

1. Click  button, go to set up dialog, make sure the "Spare Playlist" is chosen.

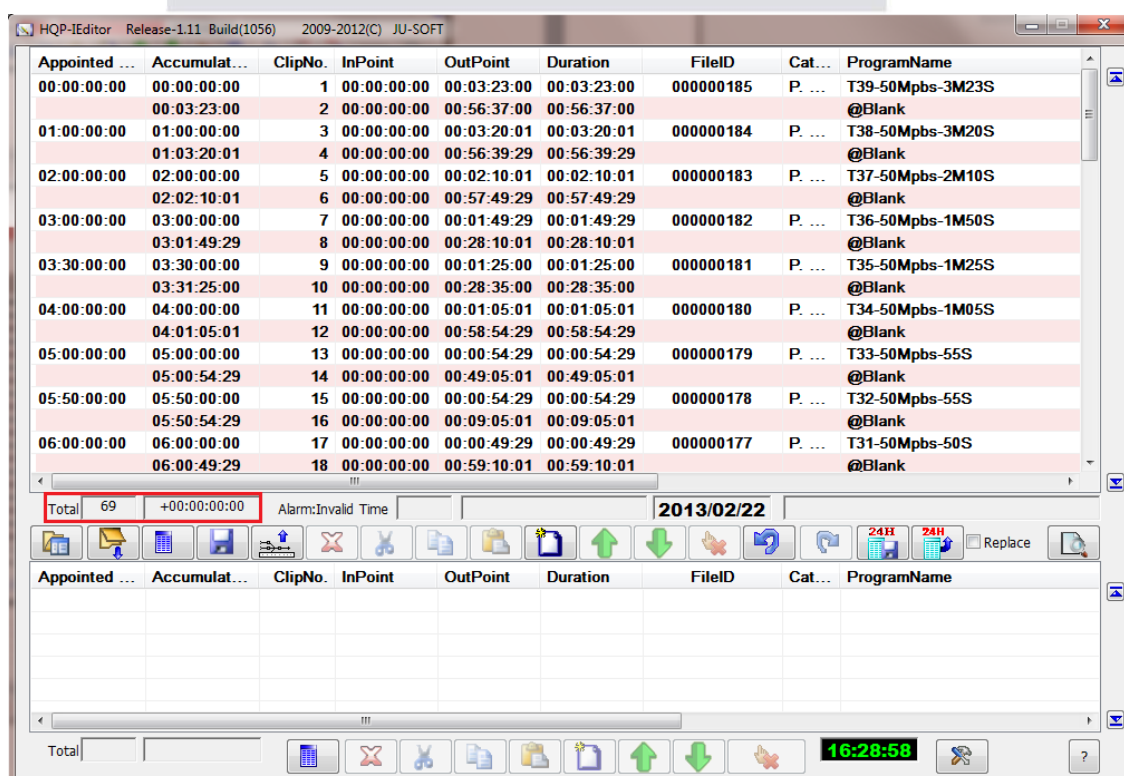


2. The content of the following playlist is less than 24 hours. In this example, every clip is not enough to fill up between the appointed time, the pad clips are needed

to be added to fill the total content up to 24 hours.



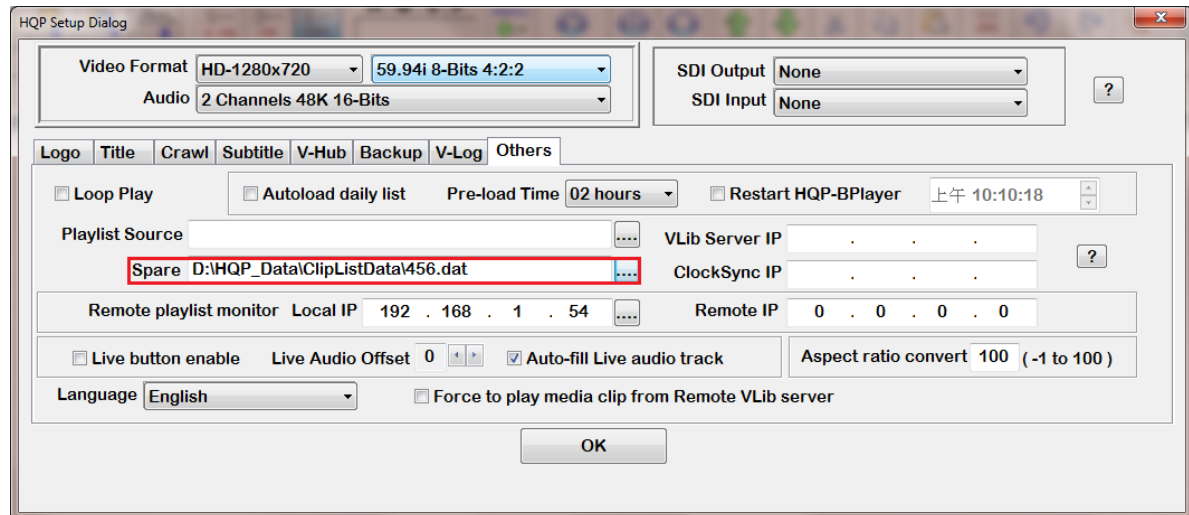
- Click on the column title "Duration" shown as below picture. The software will use leave a blank clip to fill up the shortage of the time between every appointed time until the total content is exactly 24 hours. (See the following rows with pink background, program name @Blank)



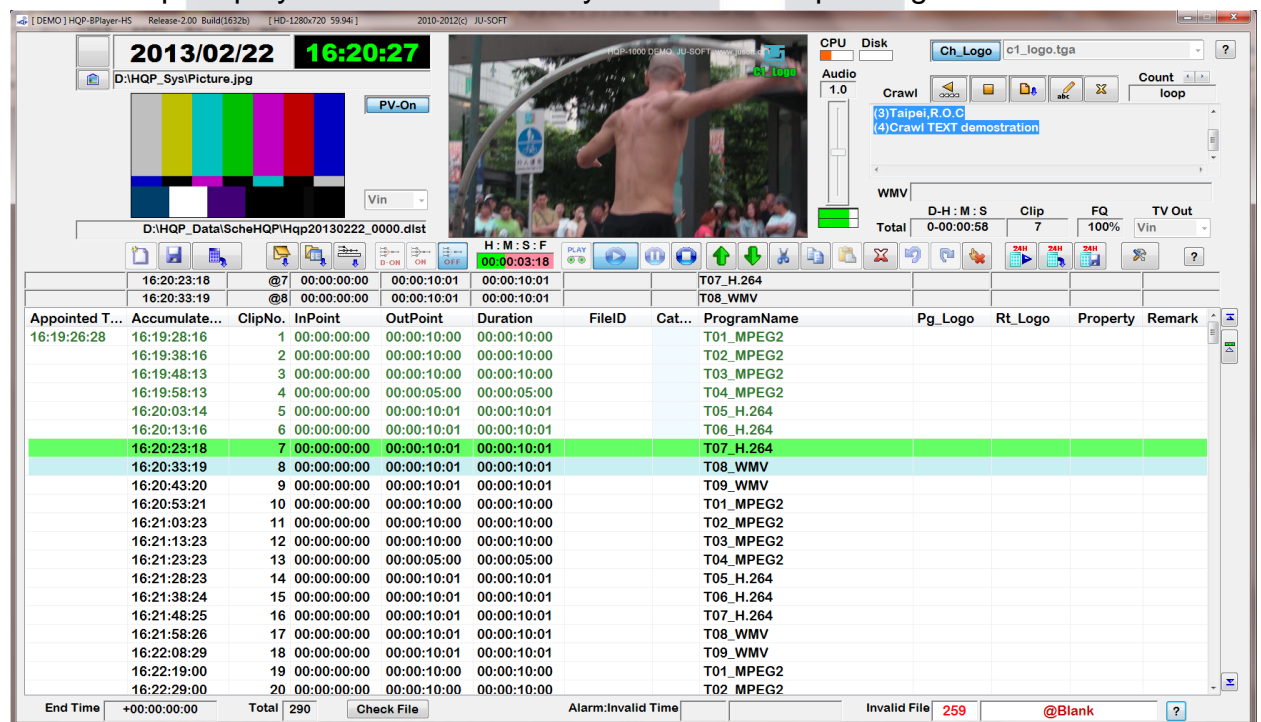
3. The @Blank rows can be replaced by the content in the “Spare List”. So Click



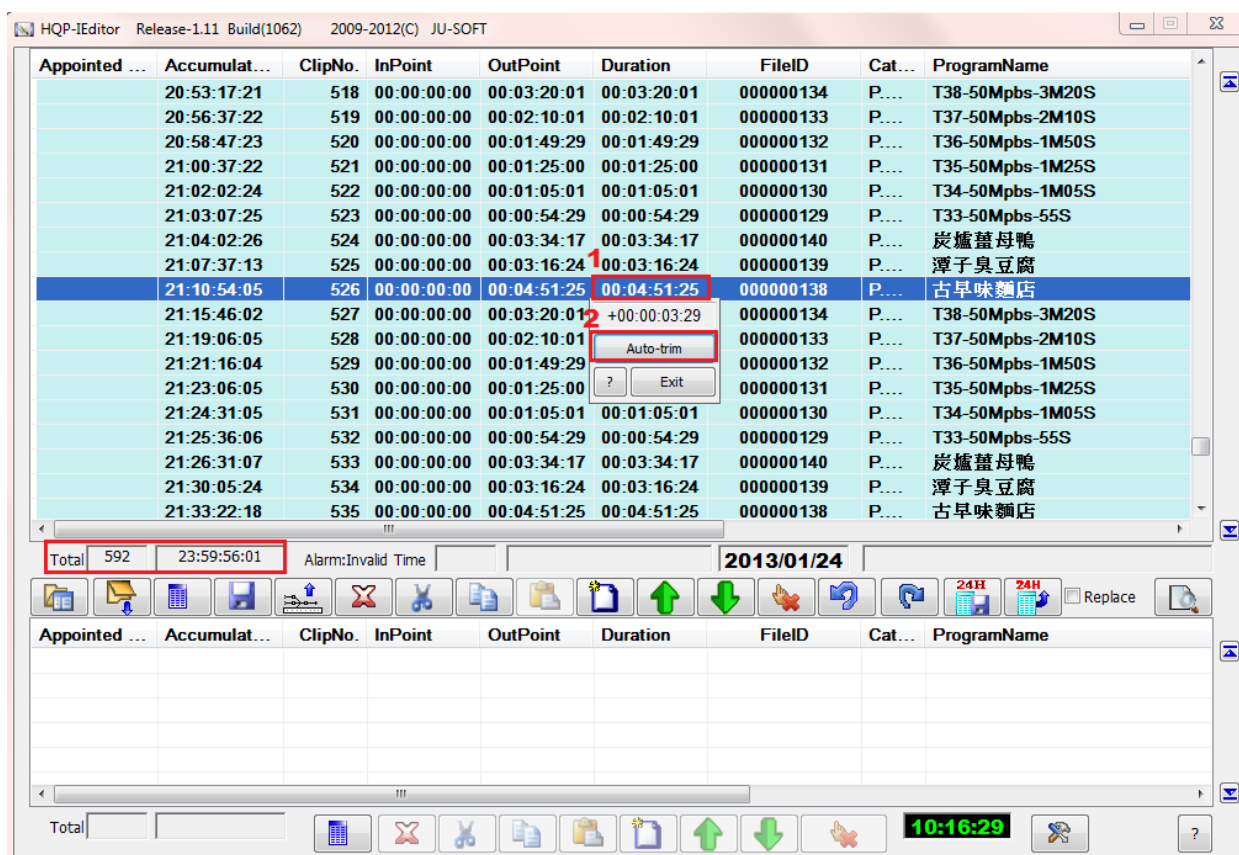
button to open the setup dialog, and set the path of the spare list as the picture shows.



4. When it is playing back the @blank will be automatically replaced by the content in the spare playlist file which is set by use in the setup dialog.

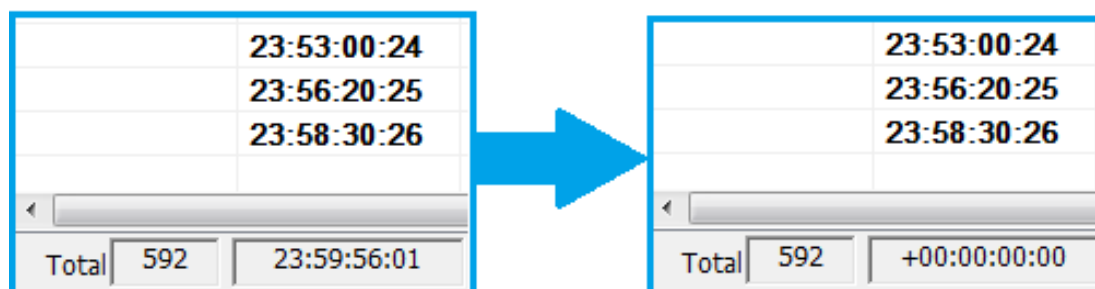


1.2.6 How to adjust the length of the video clip



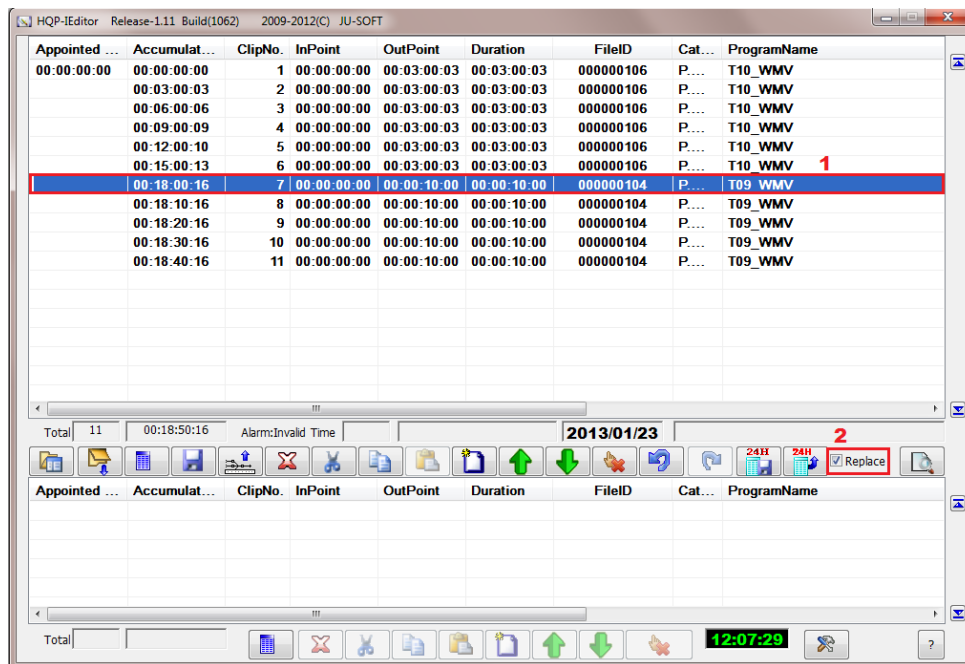
This function is to extend the length of a certain video clip in order to make the total time of the content exactly 24 hours. The extension is the last still frame picture without audio. For example, this playlist starts from midnight 12 o'clock, it is 3 seconds and 29 frames short of 24 hours.

- (1) Click the row of the clip to be extended, the pop up dialog as the above picture number 2 will be shown up.
- (2) Click "Auto-trim". In this example, the time of this clip will be extended 3 seconds and 29 frame, so to fill up total time to 24 hours.

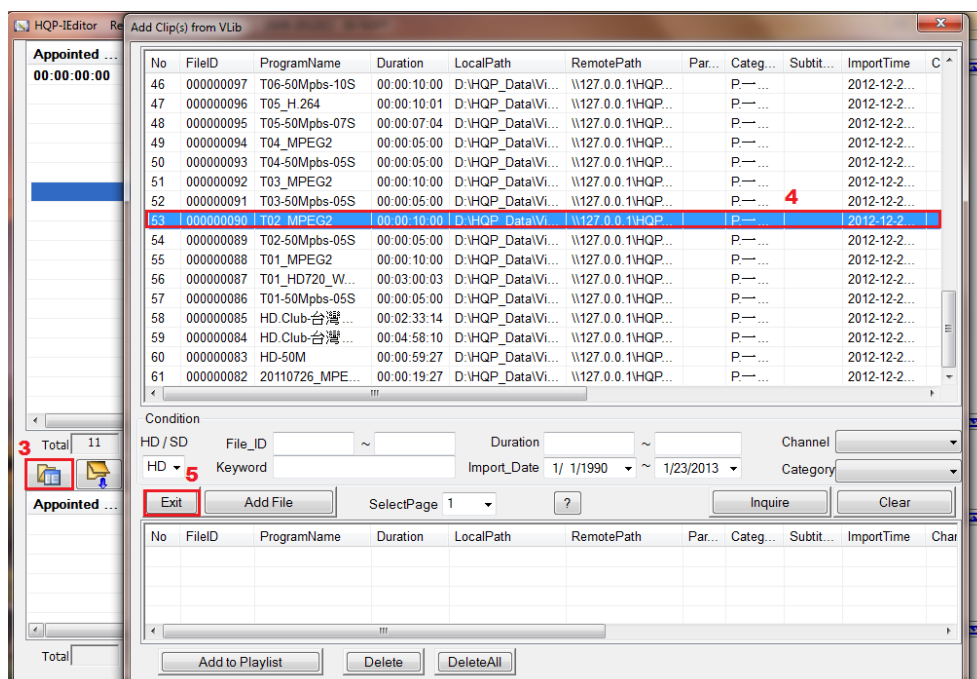


1.2.7 How to replace a clip

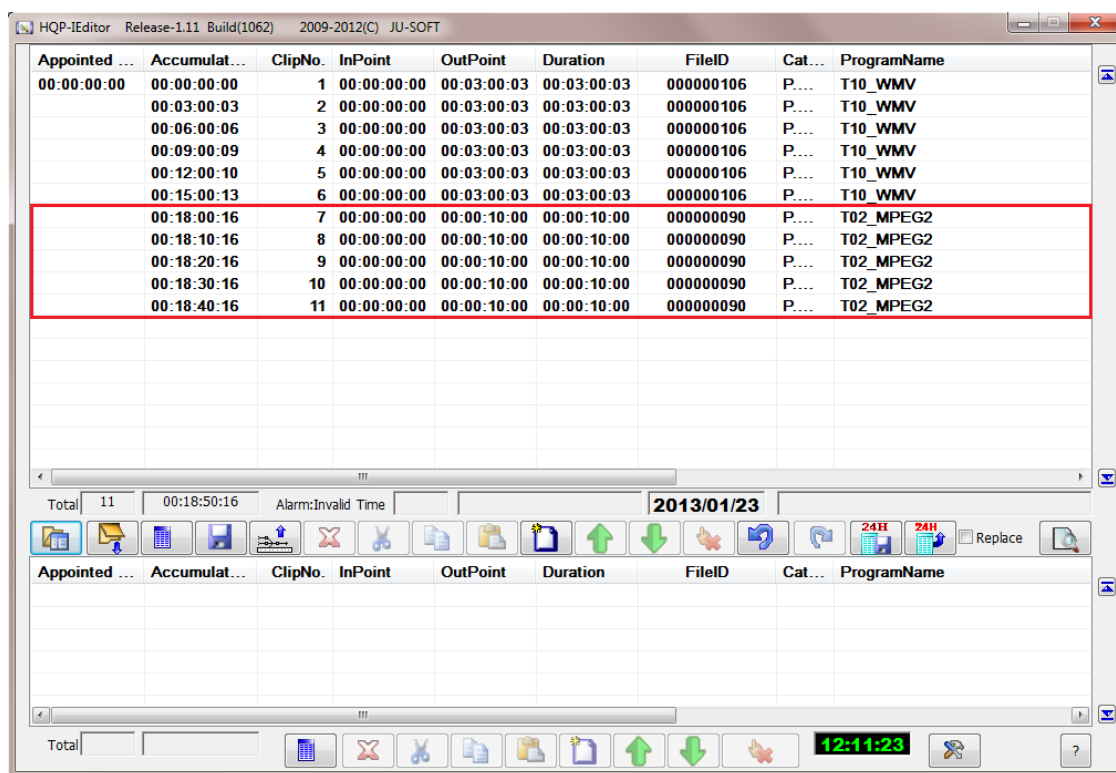
HQP-IEEditor allows user to replace a clip (and clips which with same File ID) with a designate clip. For instance, we want to replace all T02_MPEG2 to T09_WMV as figure below:



- (1) . Select the clip which you want to be replaced.
- (2) . Tick the "Replace" box.

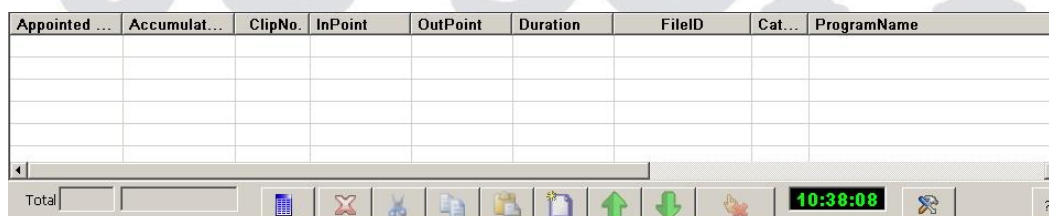


- [3] . Click to add clip(s) from VLib.
- [4] . Double click on the clip which we want to replace the original one.
- [5] . Click “Exit” to leave the current window.




- [6] . Notice that all the T09_WMVs are replaced by T02_MPEG2

1.3 Temporary Editing Area

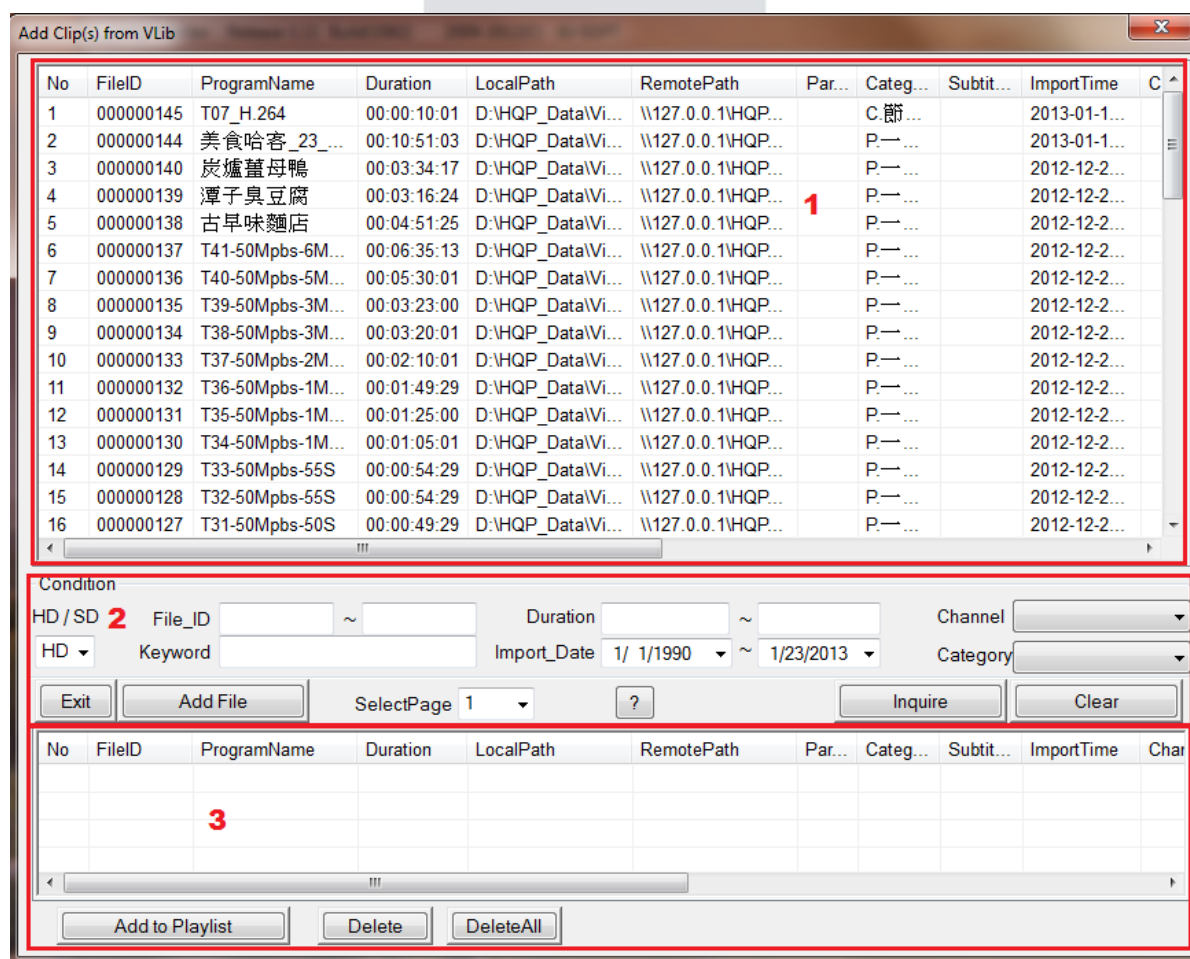


This place is provided to temporarily place clips. Users can load former playlist(s) to this area, edit and rearrange the former playlist content, and then copy a group of wanted clips to the currently editing playlist, which accelerates the process of scheduling playlist. The area works in the same way as the “Playlist Editing Area”.

2. Program Database

Users can press the “” button to display the program database window, and add clips from VLib. The way to use database is that type in keywords or any text strings to search the database and list all relevant programs, then choose from the list of programs to add to the currently editing playlist.

Operation interface



- (1) . Searching Results Displaying Area
- (2) . Query Conditions Setting Area
- (3) . Selected Files Displaying Area

2.1 Searching Results Displaying Area

1. This field shows entire program information found through program database

search. Double click the mouse to add to the main schedule playlist in HQP-Editor. Alternatively, click the mouse right button to add to the program selection list, and then click the “Add to Program Schedule List” button to add the selected program list in batch to the main schedule playlist.


2. To select a position in the playlist, the user can highlight a program in the playlist and then add new programs. New programs will be added to the front of highlighted programs. If there are no programs highlighted then the newly added programs will be moved to the bottom of the playlist.

2.2 Query Conditions Setting Area

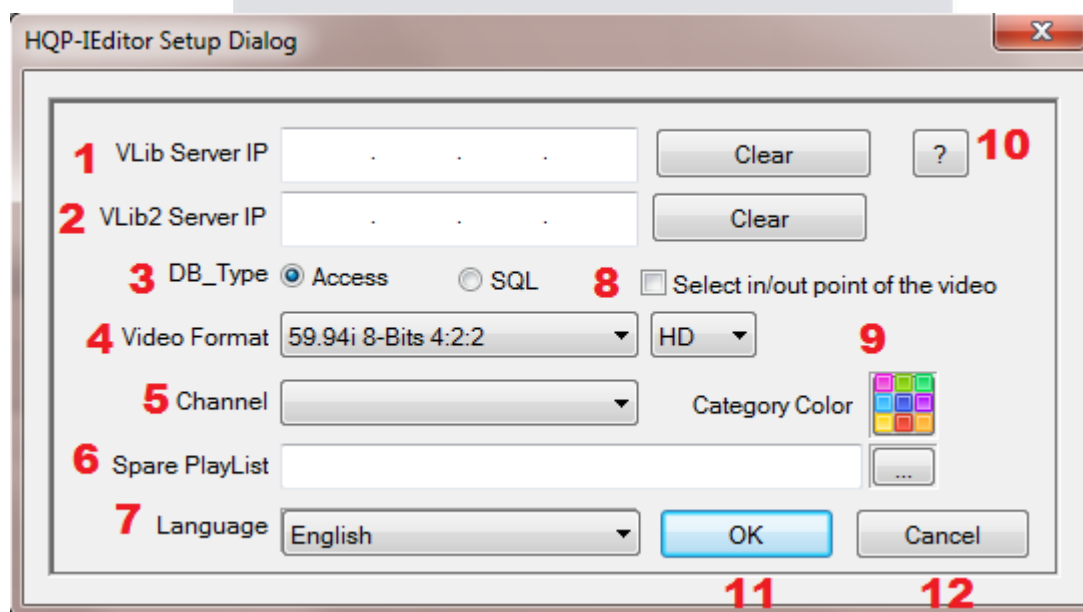
- [1] . : Select HD or SD clips from the drop down list.
- [2] . : Enter a range of File IDs.
- [3] . : Enter a time range to search for media clips within it.
- [4] . : By selecting a channel from the drop down list, users can inquire media clips from the designate channel (It works only on a multi-channel VLib server).
- [5] . : HQP-IEEditor will search Program Name, description, and remarks to find media clips corresponding to the entered keyword.
- [6] . : Users can inquire media clips by giving a range of dates.
- [7] . : Users can inquire media clips from certain category.
- [8] . : After enter searching conditions, click the button to start inquiring.

3. Configuration

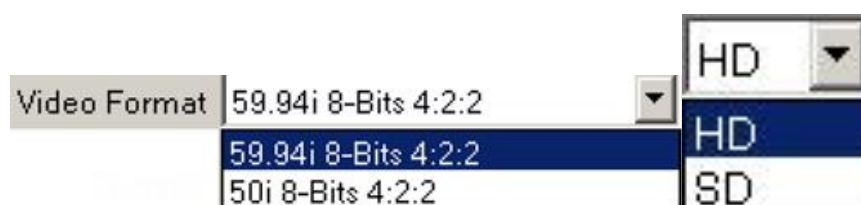



Click the “” button to open the setup dialog. User can set the IP address of VLib remote server, and change the language settings here.

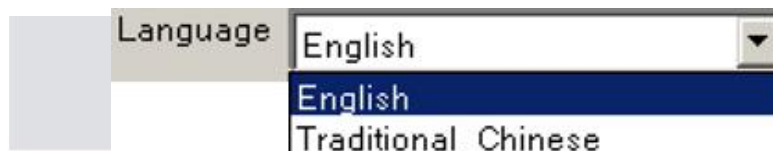
Operation interface




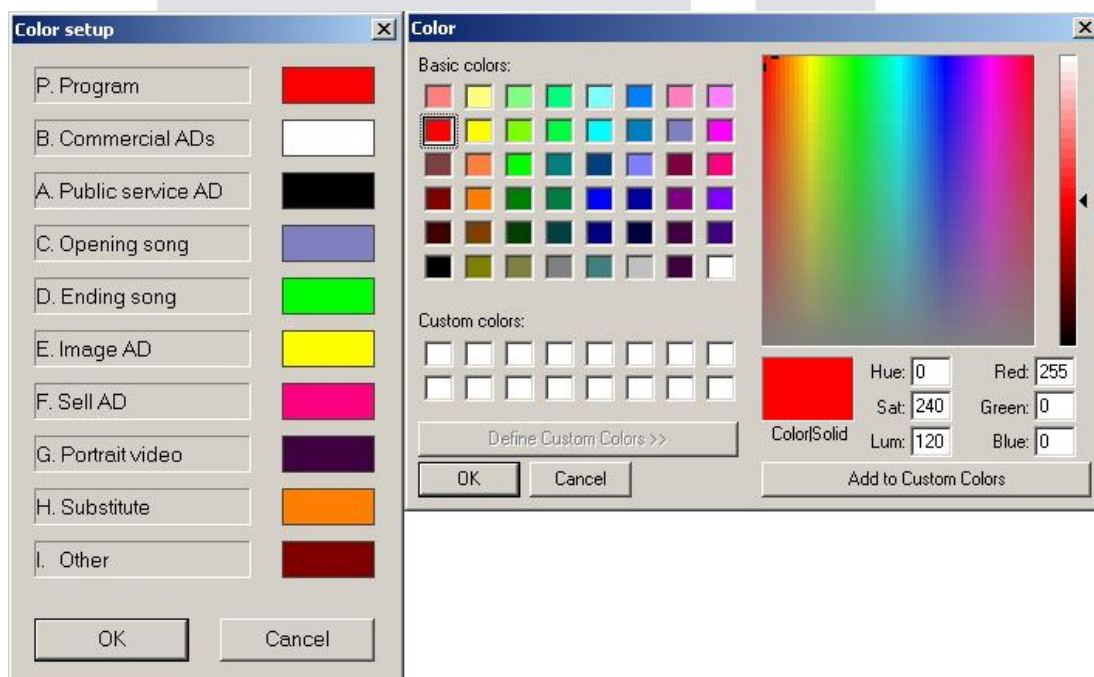
- [1] . **VLib Server IP:** Input IP address of remote VLib server and make sure that this computer has been authorized to read and write HQP_Data directory in VLib server.
- [2] . **Remote Server IP:** Input IP address of remote VLib server and make sure that this computer has been authorized to read and write HQP_Data directory in VLib backup server.
- [3] . **DB Type:** Select type of database of the remote VLib Server.
- [4] . **Video Format:** Select frame rate of video clip. Select 59.94i for NTSC, and select 50i for PAL system. Users can select HD or SD to change the default searching setting while adding clip(s) from VLib.



- [5] . **Channel:** Select TV channel to which the currently editing Daily-Playlist belongs, and it will be saved into designate folder of the channel in VLib server database.
- [6] . **Spare Playlist:** any of the playlists can be set as spare playlist by clicking  button to fulfill insufficient time for the current playlist.
- [7] . **Language:** Select the language from the drop down list, Restart iEditor to confirm your setting.



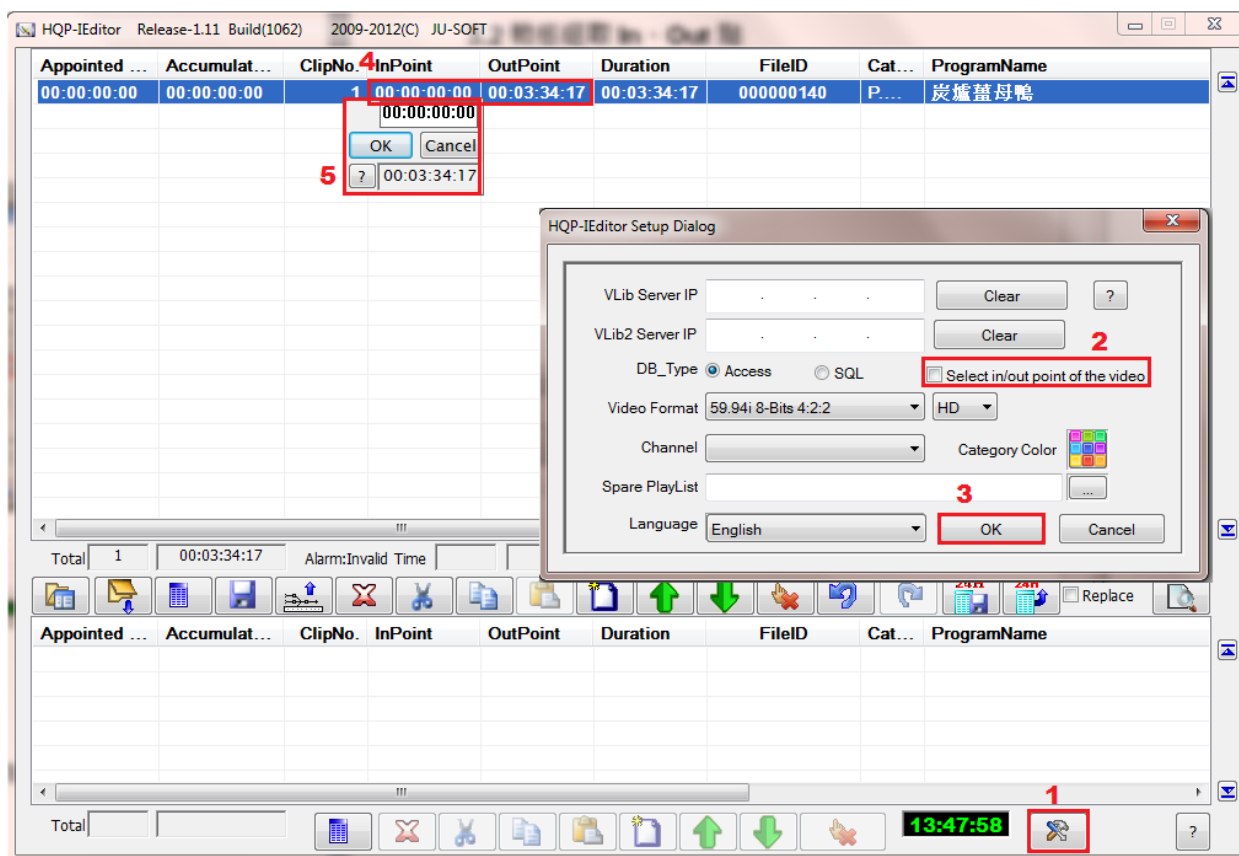
- [8] . **Dynamic to select point:** Tick the box to enable the Dynamic to select In/Out point function which will explain later in chapter 3.1.
- [9] . Click the  button to open the Color setup dialog. User can define a color to represent each category. Double click to launch color dialog for reset.



- [10] . **On-line help:** Press to see more information of on-line help.
- [11] . **OK:** Click to confirm changes and exit the dialog.
- [12] . **Cancel:** Click to exit the dialog without saving.

3.1 Select In Point and Out Point of a clip

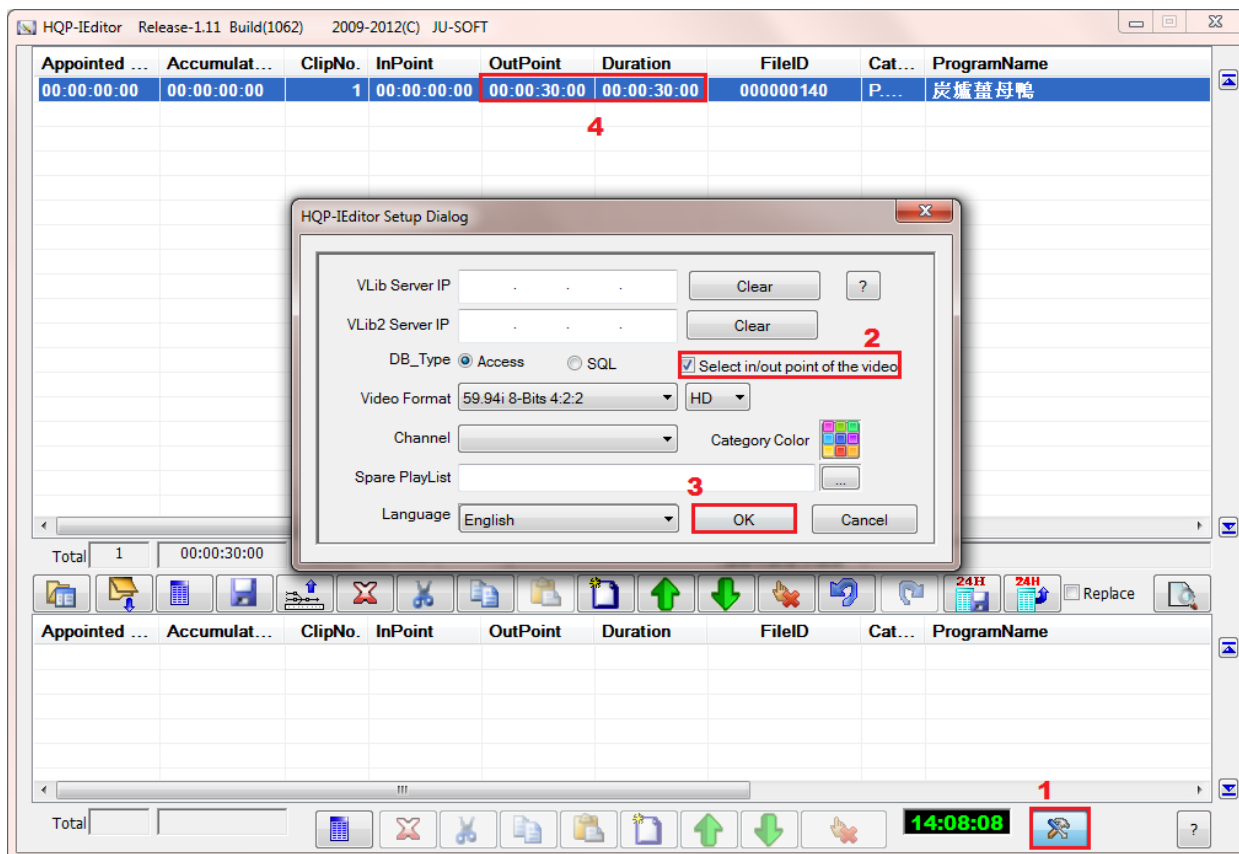
User can set In/Out Point freely by double clicking on clips straight.



- (1) . Click to open the Setup Dialog
- (2) . Uncheck the box of "Dynamic to select point"
- (3) . Click "OK" to confirm changes.
- (4) . Double click on the column of "In Point" or "Out Point" to open select point dialog.
- (5) . Adjust In Point and Out Point and click "OK".

3.2 Dynamically select In Point and Out Point

Once users enable the function, they can select In/Out point dynamically.



- [1] . Click to open the Setup Dialog
- [2] . Tick the box of “Dynamic to select point”
- [3] . Click “OK” to confirm changes.
- [4] . Double click on the column of “In Point” or “Out Point” to open select point dialog.



- [5] . Drag the playhead along scrubber bar to fast forward or rewind the video.
- [6] . Press the arrow keys to monitor it frame by frame, and then accurately set the In/Out point of the video clip
- [7] . Click "OK" to confirm changes.
- [8] . The time of In/Out point in playlist have been changed.

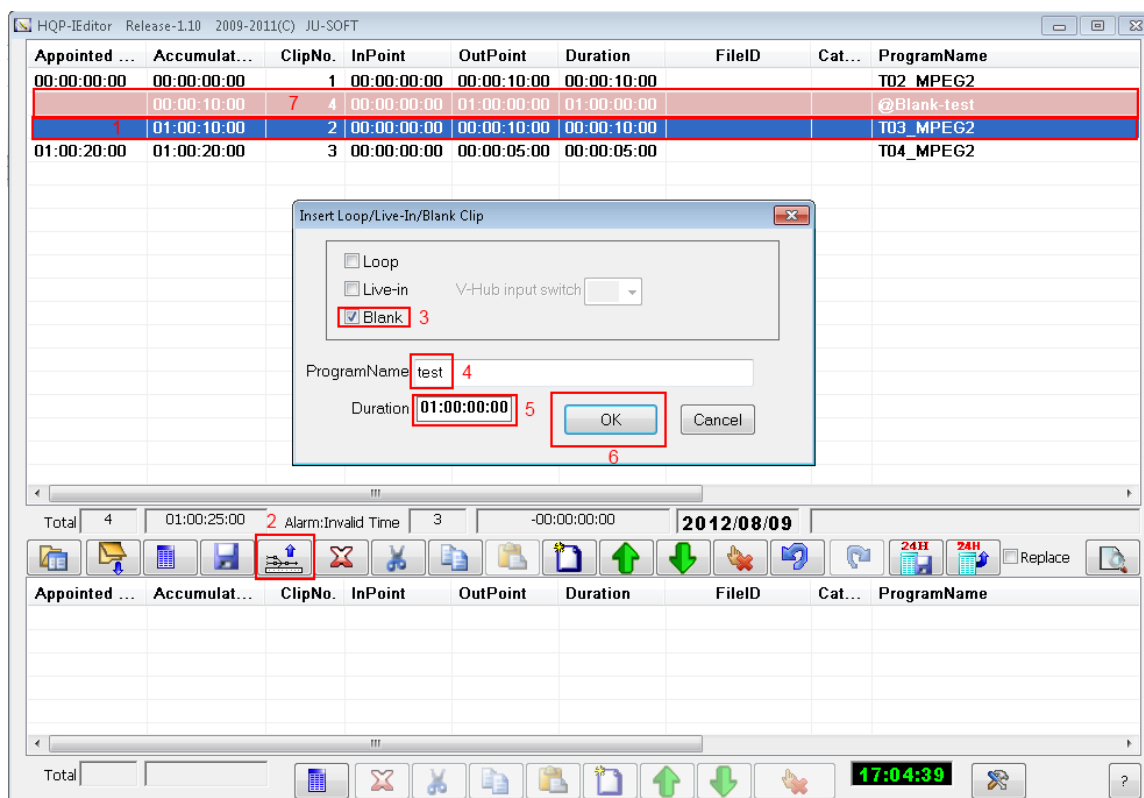
Appointed ...	Accumulat...	ClipNo.	InPoint	OutPoint	Duration	FileID	Cat...	ProgramName
00:00:00:00	00:00:00:00	1	00:00:10:00	00:02:40:00	00:02:30:00	000000106	P...	T10_WMV

8

Note: The duration of clips must be longer than 5 seconds.

4. Emergency Import Video

Operators will know in advance that videos may not be imported to HQP-VLib in time while they are arranging playlist (Delay by post production team). Operator could follow steps as below to insert a blank clip to fill up lacked time in playlist.

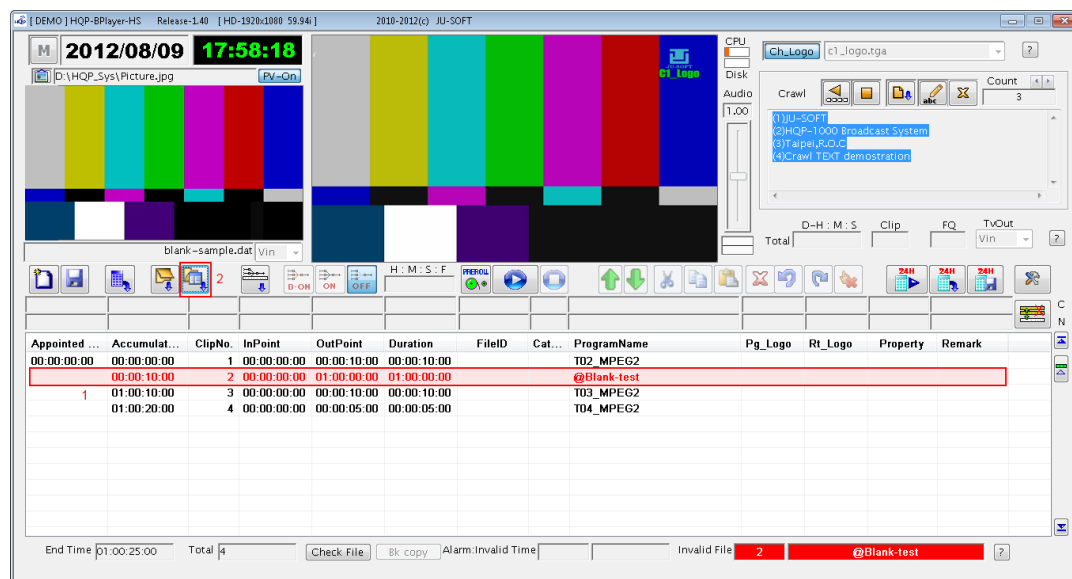


- [1] Select a clip which will be listed next blank clip
- [2] Click Insert [Loop/Live-in/Blank clip] button.
- [3] Tick "Blank"
- [4] Type clip name
- [5] Type clip duration
- [6] Click [OK] button
- [7] Blank clip be inserted

After finishing arrangement of playlist, HQP-BPlayer will load playlist at appointed pre-load time (See HQP-BPlayer->Setup->Others->Pre-load time).

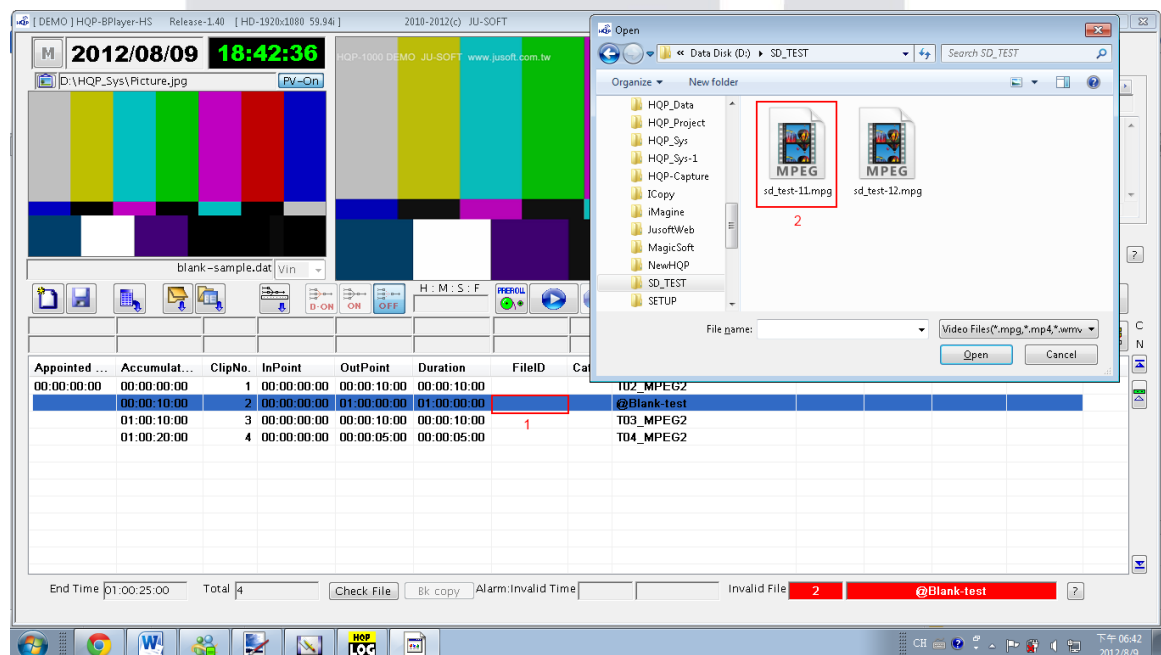
- If a clip could be ready to replace blank clip in time. there are 2 conditions operators will meet :

1. Operator has enough time to import ready clip to HQP-VLib



- [1] Delete Blank clip
- [2] Click [Add clip(s) from VLib], select clip that you need and put it into original position of blank clip which is deleted.

2. Operator could import ready clip via USB hard drive or folder of local network.



- [1] Click [Field ID] on blank clip
- [2] Select ready clip from USB hard drive or folder of local network.

- If operator confirmed that the clip could not ready to replace blank clip in time:
Operator could set spare playlist to fill up lacked time of playlist.
See HQP-BPlayer->Setup->Others->Spare Playlist



JU-SOFT

Addr : 10F.-2, No.25, Ln. 169, Kangning St., Xizhi Dist., New Taipei City 221, Taiwan (R.O.C.)

Tel : +886+2-26955343

Fax : +886-2-26958791

Website : www.jusoft.com.tw

E-Mail : sales@jusoft.com.tw