



www.opti-ups.com

CS500B User Manual

Placement

CS500B is intended for indoor use only; its internal components are not sealed from the environment. Please install CS500B in a protected environment away from excessive heat or excessive moisture.



Charging the UPS first

The battery is fully charged at the factory. However, user is recommended to charge the battery at least 4 (FOUR) hours before using UPS, since energy loss may have occurred during shipping or long duration storage. To recharge the battery, simply let UPS be plugged into an AC outlet.

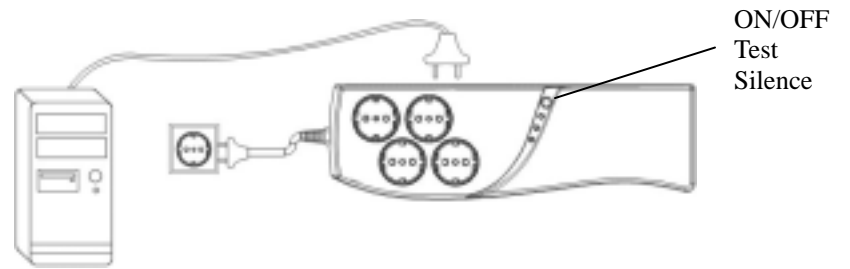
Connect Equipment to CS500B

Battery Backup & Surge Protection Outlets

These two outlets not only provide surge protection but also backup power for your equipment. In case of AC failure, battery power is automatically provided to two three outlets. Please connect your main devices to these outlets.

Surge Protection Outlets

These two outlets provide surge protection but do not provide power during AC failure.

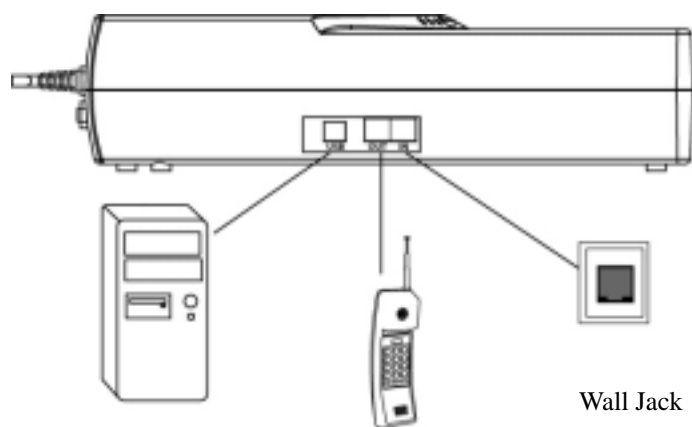


Turn on the UPS

The UPS can be turned on after connecting to the utility power. After the UPS is turned on, it conducts a self-test and enters normal mode. Pressing the power button for 1 second under normal mode will also enable the self-test function. The silence function can be enabled/disabled by pressing the power button for 1 second in backup mode. In addition, the power button can be used as the master on/off switch for your equipment by leaving your equipment connected to UPS and switched on. To turn off the UPS, please press power button until buzzer stops (about 2 seconds).

Data Line Surge Protection

CS500B's exclusive communication protection ports will protect any standard modem, PBX System or 10/100 BaseT connection ports. This communication port can accommodate either the phone (RJ-11) or network (RJ-45) jack.



USB Port of
Computer

TEL / FAX /
Modem / LAN

Wall Jack

USB Communication Port

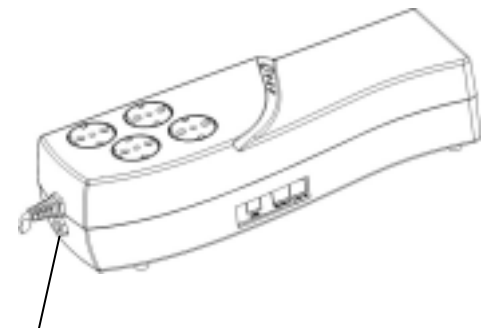
Please link CS500B USB port with computer USB port using the USB cable which is attached inside the box. Now, you can use the software (OPTI-SAFE SENTINEL) to control your computer and CS500B.

Install Software

Make sure your communication cable is connected to your UPS as shown in the left picture. To install the software, follow the steps below. Simply insert software CD into your computer, and the install process will begin. If not, run Setup.exe from the CD manually.

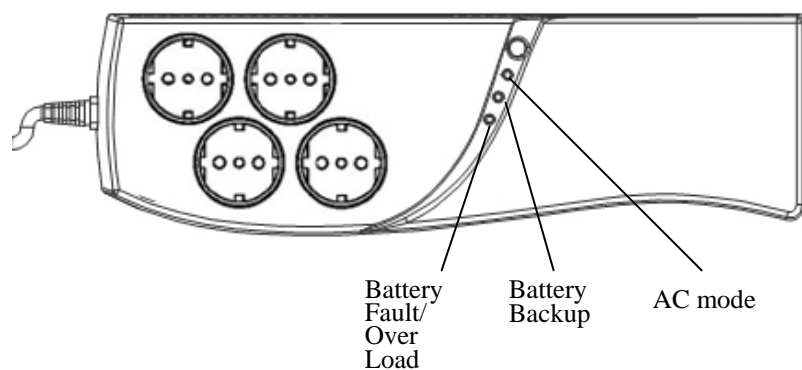
Circuit Breaker

The circuit breaker button is located at the side of CS500B. It will stick out to disconnect itself from the utility power when an overload condition occurs. If the button sticks out, disconnect nonessential equipment. Reset the circuit breaker by pushing the button inward.



Circuit Breaker

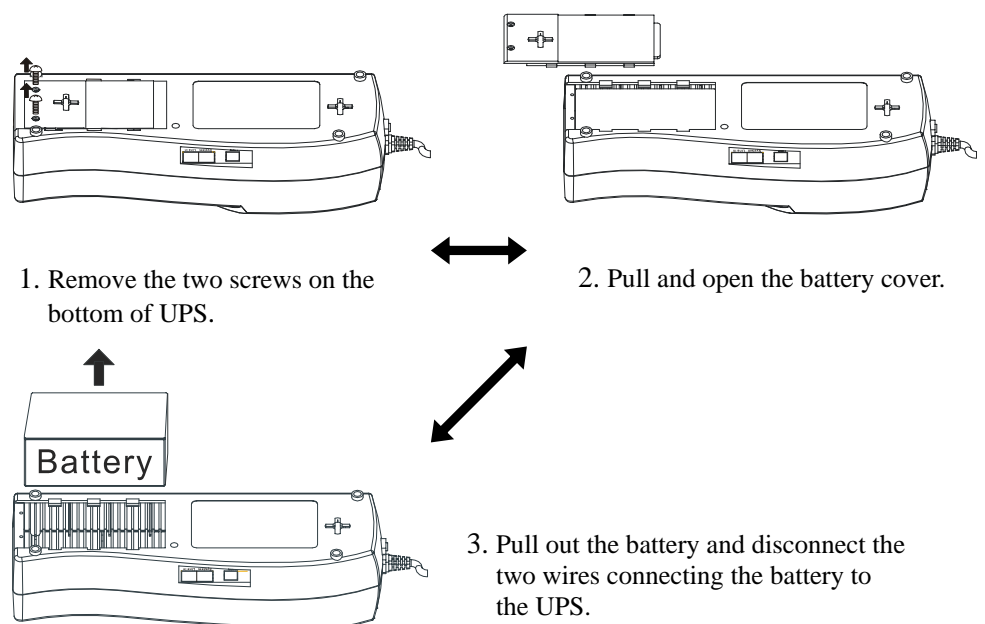
LED Indicators & Alarms



AC mode	Green LED ON	None
Battery fault	Red LED flashes once every 0.5 sec	None
Overload	Red LED ON	ON
Backup mode	Yellow LED flashes once every 4 sec	Buzzes once every 4 sec
Battery low	Yellow LED flashes once every 1 sec	Buzzes once every 1 sec
Charger abnormal	Green LED ON	Buzzes once every 0.5 sec

Battery Replacement Procedure

Note: Follow this procedure for safe replacement of the battery. However, small sparks may occur during the process. This is normal.



4. Connect the wires to the new battery making sure that the red wire is connected to the red battery terminal and the black wire is connected to the black battery terminal.
5. Reverse the procedure from 3 to 1.

Specifications

Maximum Capacity (VA/W)	500VA / 300W
On-battery Output Waveform	Step Wave
Input Voltage Range	230V +/- 15%
Input Frequency	50Hz/60Hz Auto Sensing
Output Voltage Regulation	230V +/- 5%
Data Line Surge Protection	RJ11/RJ45
Surge Energy Rating	1380 Joules
Recharge Time to 90%	<8 hours
Operating Temperature	0~40 / 32~104
Storage Temperature	-20~60 / -4~140
Relative Humidity	0 to 95% Max Non-condensing
Audible Noise	<45 dBA
Dimensions (L×W×H)	355×110×90(mm) 14×4.3×3.5(inches)
Weight (Net)	2.5(kg) 5.5(lbs)
EMC/RFI Compatibility	CE
Safety Certifications	C-Tick , A-Tick

Warranty

LIMITED WARRANTY

What the warranty covers:

We warrant this product to be free from defects in material and workmanship during the warranty period. If a product proves to be defective in material or workmanship during the warranty period, we will at our sole option repair or replace the product with a like product.

How long the warranty is effective:

For accurate warranty period and conditions, please contact local branch offices or your dealers.

Who the warranty protects:

This warranty is valid only for the first consumer purchaser.

What the warranty does not cover:

- Any product on which the serial number has been defaced, modified or removed.
- Damage, deterioration or malfunction resulting from:
 - Accident, misuse, neglect, fire, water, or other acts of nature, unauthorized product modification, or failure to follow instructions supplied with the product.
 - Repair or attempted repair by anyone not authorized.
 - The fault is result of accidental damage or damage in transit or transportation, including but not limited to liquid spillage.
 - Removal or installation of the product.
 - Causes external to the product.
 - Use of supplies or parts not meeting our specifications.
 - Normal wear and tear.
 - Any other cause which does not relate to a product defect.
- Removal, installation and set-up service charges.

Limitation of implied warranties:

There are no warranties, express or implied, which extend beyond the description contained herein including the implied warranty of merchantability and fitness for a particular purpose.

Exclusion of damages:

Our liability is limited to the cost of repair or replacement of the product. We shall not be liable for:

- Damage to other property caused by any defects in the product, damages based upon inconvenience, loss of use of the product, loss of time, loss of profits, loss of business opportunity, loss of goodwill, loss of data, loss of software, costs of substitute equipment, interference with business relationships, claims by third parties, or other commercial loss, even if advised of the possibility of such damages.
- Any other damages, whether incidental, consequential or otherwise.
- Any claim against the customer by any other party.

Registration

The standard warranty is 2 years from the date of purchase (includes battery). Please register to assure your product warranty. There are two ways to register.

- Please fill in the registration form, and send it to OPTI International by fax or regular mail.
- You can choose on-line registration as well.

Troubleshooting

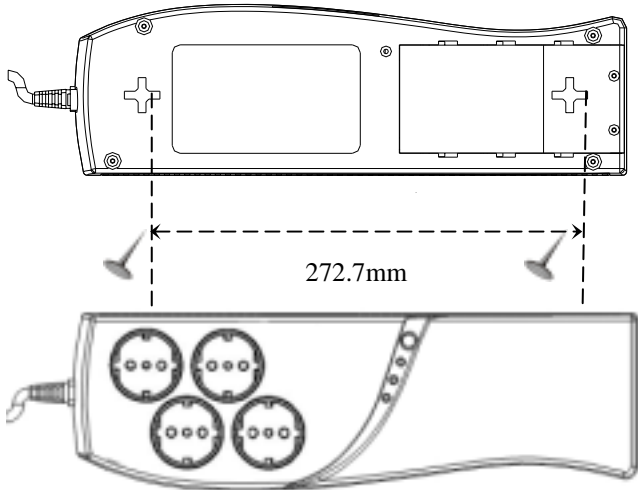
Problems	Possible Cause	Solution
Surge Protection outlets stop providing power to the equipment	Circuit breaker button popped up as a result of overload.	Unplug at least one piece of equipment from the surge protection outlets. Switch off UPS, wait for 5 seconds, reset the circuit breaker.
UPS doesn't perform to its expected runtime.	Battery undercharged or depleted due to frequent power outages.	Recharge the battery by leaving the UPS plugged in and load disconnected from UPS.
	The power required by your equipment slightly exceeds the capacity of the UPS.	Unplug at least one piece of equipment from the UPS outlets.
	The battery is slightly worn-out	Consider replacing the battery.
UPS cannot be turned on.	The battery is worn-out.	Consider replacing the battery.
	Mechanical problem.	Contact your sales representative.

Contact Information

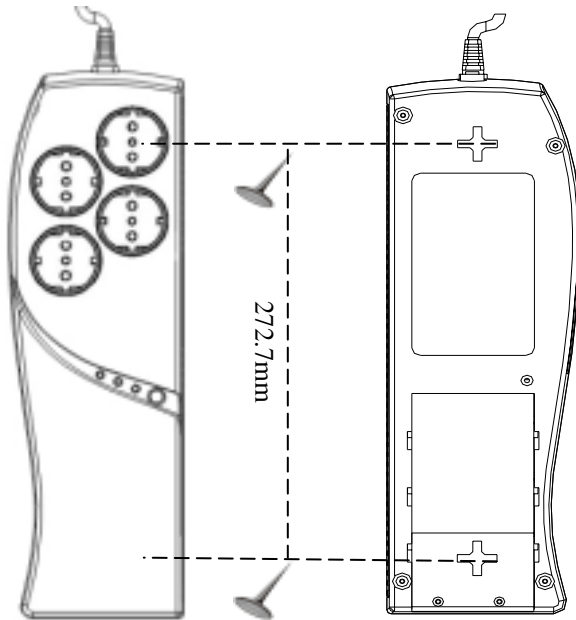
USA OPTI-UPS Corp. Tel:1-909-869-5700 Toll Free: (888)OPTI-UPS info@opti-ups.com http://www.opti-ups.com	Australia OPTI Australia Pty Ltd. Tel:61-3-9545-5322 Toll Free: AU: 1800-678-428 NZ: 088-OPTI-UPS info@opti-ups.com.au	Taiwan OPTI International Corp. Tel: 886-2-2246-7272 Toll Free:0800-029898 info@opti-ups.com.tw http://www.opti-ups.com.tw
--	--	--

Wall Mount of UPS

CS500B can be mounted to a wall surface. Please see the illustration below. There are two key-hole slots on the bottom of the UPS.



Horizontal



Vertical