



# **LifeView FlyTV Prime Series User Manual**

## **Copyright and Trademark Notice**

© 2003 by Animation Technologies Inc. All rights reserved.

Information in this document is subject to change without notice. No part of this document may be reproduced or transmitted in any form or by any means, electronic or mechanical without prior written permission of Animation Technologies Inc.

Windows® is a trademark of Microsoft Corporation. All other brand names are registered trademarks of their respective companies.

## **FCC Statement**

This equipment has been tested and found to comply with the limits for a Class B computing device in accordance with the specifications set forth in Subpart J of Part 15 of the FCC Rules.

---

# Contents

<b>1. Getting Started .....</b>	<b>1</b>
1.1. Introduction.....	1
1.2. Features .....	1
1.3. Model Definitions.....	1
1.4. Package Contents .....	2
1.5. System Requirements .....	2
<b>2. Input &amp; Output Connections .....</b>	<b>3</b>
2.1. FlyTV Prime Series Model Connections.....	3
<b>3. Installation of Hardware and Drivers .....</b>	<b>4</b>
3.1. DirectX .....	4
3.2. Installing the FlyTV Prime 3X .....	4
3.3. Driver Installation for Windows 98SE .....	5
3.4. Driver Installation for Windows ME.....	7
3.5. Driver Installation for Windows 2000 / Windows XP.....	9
3.6. Settings for Sound Card Owners.....	10
<b>4. The LifeView TVR.....</b>	<b>11</b>
4.1. Installation of the LifeView TVR.....	11
4.2. Launching the TVR Software.....	11
4.3. Choosing your Video Source.....	11
<b>5. Settings.....</b>	<b>13</b>
5.1. TV Settings Dialog Box .....	13
5.2. Fully Scan Dialog Box .....	14
5.3. Video Settings Dialog Box.....	14
5.4. Record Settings Dialog Box .....	15
5.5. Misc Page Dialog Box .....	16
<b>6. Additional Settings.....</b>	<b>17</b>
6.1. Schedule Recording .....	17
6.2. Auto Scan.....	18
6.3. Change Skin.....	18
6.4. Snapshot .....	18
6.5. Multiple Preview .....	18
6.6. Audio Settings .....	19
6.7. Teletext .....	20
6.8. Volume .....	20

<b>7. How to record a TV Program.....</b>	<b>21</b>
7.1. The Record Button .....	21
7.2 The Time Shift Function .....	21
<b>8. The Remote Control .....</b>	<b>22</b>
8.1. Accelerator Keys Summary .....	23
<b>9. The Gallery .....</b>	<b>24</b>
9.1. The Function Buttons .....	24
9.2. FM Radio (only for FM Models) .....	25
<b>10. The LifeView Suite.....</b>	<b>26</b>
<b>11. Using the LifeView Encoder .....</b>	<b>27</b>
11.1. About LifeView Encoder .....	27
11.2. How to Encode AVI to MPEG files .....	28
<b>12. Using the LifeView Editor .....</b>	<b>29</b>
12.1. About LifeView Editor .....	29
12.2. Frame Edit Mode.....	32
12.3. Title Edit Mode .....	33
12.4. Audio Edit Mode .....	34
12.5. Special Effect Edit Mode .....	35
<b>13. Technical Support.....</b>	<b>36</b>
13.1. Troubleshooting.....	36
13.2. Contact Us.....	37

# 1. Getting Started

## 1.1. Introduction

Thank you for choosing the **FlyTV Prime 3X** TV tuner and video capture card. This product turns your PC quick and easy into a powerful desktop multimedia System.

Capture video and still images; experience real-time MPEG-1 and MPEG-2 recording.

Moreover, the **FlyTV Prime 33/34** also provides high quality TV viewing with true stereo TV experience directly on your computer monitor!

## 1.2. Features

- Philips 713X Chipset
- Plug & Play compliant PCI card
- 125 channel cable/antenna ready TV tuner
- Composite video and S-Video input
- Multiple Channel Preview
- Teletext\*
- Real-time recording
- Time Shift Function
- LifeView Scheduler Technology
- Capture still images
- TV screen scalable up to full size
- Convert AVI file format to MPEG
- Edit videos on a frame-by-frame basis
- Overlay video with standard or animated titles
- Add audio tracks such as music on top of existing audio
- Apply special color, filter, and transition effects to your videos
- Listen to FM radio\*\*
- Compatible with current Windows Versions (Windows® 98SE, ME, 2000, XP)

\* depends on the TV Broadcasting system in your country

\*\* only FM Models

## 1.3. Model Definitions

Model Name	TV Audio	FM Radio
FlyTV Prime 30	Mono	Not supported
FlyTV Prime 30FM	Mono	Supported
FlyTV Prime 33	Stereo (NTSC)	Not supported
FlyTV Prime 33FM	Stereo (NTSC)	Supported
FlyTV Prime 34	Stereo (PAL)	Not supported
FlyTV Prime 34FM	Stereo (PAL)	Supported

## 1.4. Package Contents

When removing the contents of the package, please inspect all items to ensure no damage was sustained during shipping. The following items should be included in the package:

- LifeView FlyTV Prime PCI card
- Audio cable for sound card
- Remote Control
- Infrared Receiver
- Quick Installation Guide
- Installation Manual
- Installation CD-ROM (incl. multilingual Video-Tutorial)
- FM Radio Antenna (only for FM Models)

## 1.5. System Requirements

To successfully use the **FlyTV Prime 3X** solution, please ensure that your desktop system meets the following requirements:

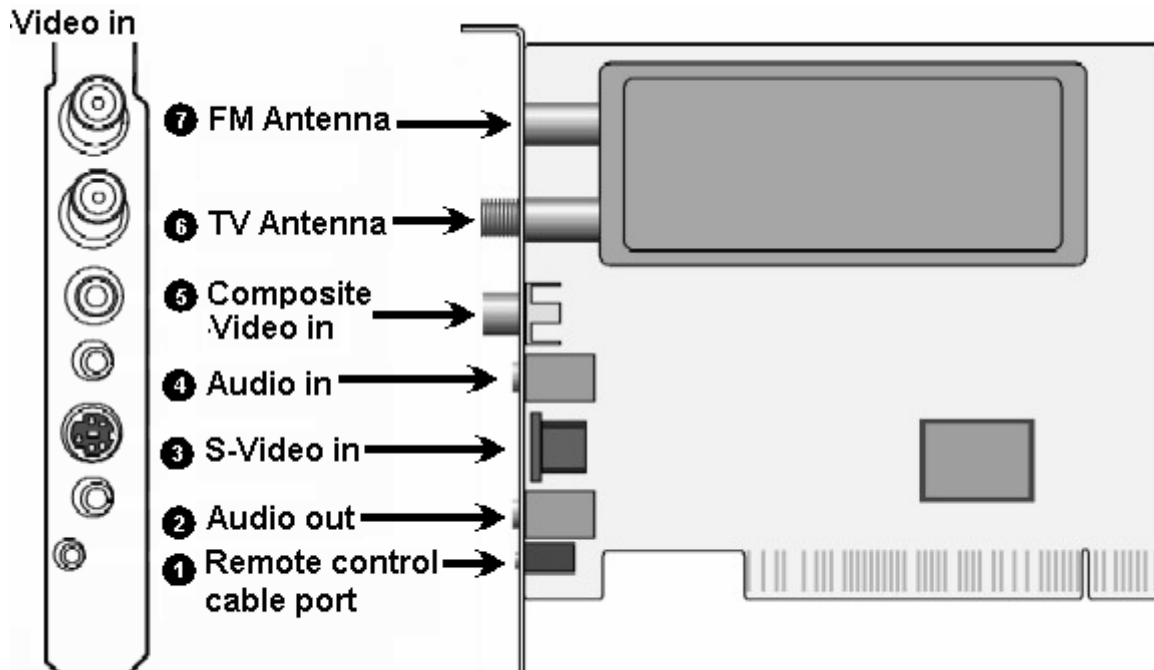
- Mainboard with available busmaster\* capable PCI slot (v.2.1)
- Pentium® III 500 MHz or faster PC
  - MPEG-1 real-time encoding: PIII® 800MHz or AMD Athlon® 800 or higher
  - MPEG-2 real-time encoding: P4® 1.6GHz or AMD Athlon® 1.6 or higher
  - DVD real-time encoding: P4® 2GHz or AMD Athlon® 2GHz or higher
- 128 MB RAM (minimum), 256 MB RAM recommended
- VGA-Card with DirectX 8.1 Support
- Windows® 98 SE, Windows® ME, Windows® 2000, Windows® XP
- CD-ROM or DVD drive
- 20 MB available hard disk space for installation
- Additional free space on your Hard disk for recording and editing files
- VGA monitor with DirectShow installed supporting 16-bit color
- Sound card
- Speakers for audio output
- Available IRQ
- TV antenna or TV cable

\* Please refer to the manual of your mainboard

## 2. Input & Output Connections

### 2.1. FlyTV Prime Series Model Connections

The **FlyTV Prime 3X** PCI card supports both S-Video and Composite input. See the diagram below for connection details.



- |                               |   |
|-------------------------------|---|
| <b>1. Remote Control:</b>     | To connect the sensor of your FlyTV Prime 713X remote control               |
| <b>2. Audio-Out:</b>          | Use the packaged audio cable to connect to your sound card                  |
| <b>3. S-Video In:</b>         | To connect external devices like VCR or Camera                              |
| <b>4. Audio In:</b>           | To connect external audio devices   |
| <b>5. Composite Video-In:</b> | To connect external devices like VCR or Camera                              |
| <b>6. Antenna In TV:</b>      | Use these connections to connect your cable or home antenna                 |
| <b>7. Antenna In FM:</b>      | Use these connections to connect your cable or home antenna (only FM Model) |

## 3. Installation of Hardware and Drivers

The following sections provide step-by-step instructions on installing and configuring the card, accessories and software.

### 3.1. DirectX

Before installing your new FlyTV Prime 3X, it is necessary to install DirectX 8.1 or higher for your Operating system.

You find on the FlyTV Prime CD-Rom the DirectX9.0.

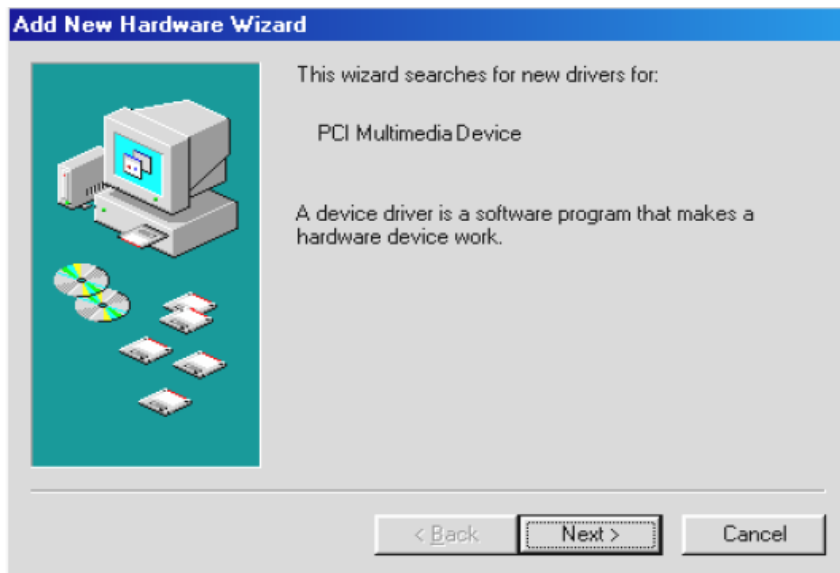
### 3.2. Installing the FlyTV Prime 3X

1. Switch off your PC and all connected peripheral devices such as your printer and monitor. Leave the AC power cable connected for the time being, so that your computer is still grounded.
2. Touch the metal chassis at the rear of the PC to ground and to discharge static. Now unplug the cord from the AC power socket.
3. Remove the cover from the case of your PC.
4. Look for a free PCI expansion slot. When selecting the PCI slot, note that TV cards should not be plugged into PCI slot 1 in conjunction with an AGP graphics card because PCI slot 1 is very frequently assigned to the same interrupts as the AGP slot. This would give both cards the same interrupt, which can lead to crashes during operation!  
The numbers assigned to the PCI slots are listed in your motherboard manual.
5. Carefully remove the card from its packaging and pick it up by the edges with one hand while your other hand is touching a metal part of the PC. This will ensure that your body is completely discharged via your computer without damaging the TV card.
6. Align the holder at the rear of the TV card in the expansion slot in such a way that the card's connectors are directly in line with the slot's socket.
7. Push the TV card firmly into the slot, ensuring good contact.
8. Fasten the TV card with an appropriate screw.
9. If a sound card is installed, connect the TV card to it using the supplied audio connector cable. Plug one end into the audio output of the TV card (light-green socket) and the other end into the Line-In terminal of the sound card (usually a light-blue socket). See additional comments in settings in [Chapter 6.6 page 19](#)
10. Reinstall the cover of your PC case.
11. Connect the antenna cable (which you would normally connect to the antenna input terminal on your television) to the TV antenna terminal on the TV/Radio card. Connect the radio antenna cable to the radio antenna terminal. Reconnect the AC power cable as well as all other cables. Make sure that your speakers are set to low volume.
12. Switch your computer on again to begin installing the software.



### 3.3. Driver Installation for Windows 98SE

After rebooting, Windows 98 SE automatically detects the presence of a new hardware component in the system and tells you so in an “Add new Hardware Wizard” window.



If you have not already done so, place the LifeView FlyTV Prime 3X Installation CD into your CD-ROM drive and click “Next” in the window.



Select now the “Search for the best driver for your device (Recommended)” item and click “Next”.



Windows searches now for the drivers. These are located on your Installation CD so choose the option CD-ROM Drive and then click “Next”.

Once Windows finds the driver, you will see a message. Simply click “Next” to continue. After installing the driver, Windows informs you that it has done so successfully. Click “Finish”.

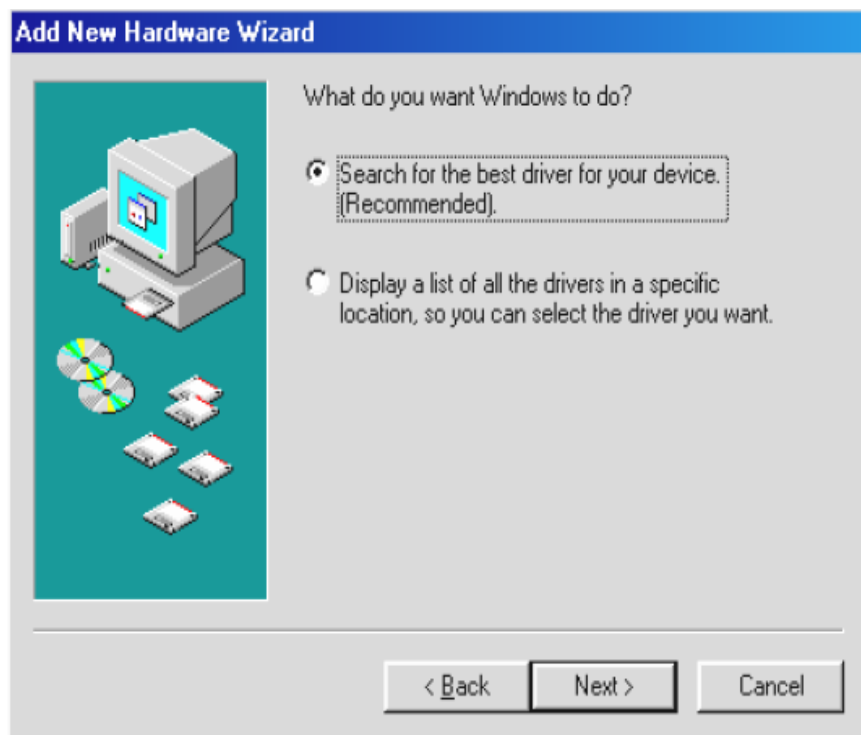
This completes the installation of the drivers and you can now start installing the application program.

### 3.4. Driver Installation for Windows ME

After rebooting, Windows ME automatically detects the presence of a new hardware component in the system and tells you so in an “Add new Hardware Wizard” window.



If you have not already done so, place the LifeView FlyTV Prime 3X Installation CD into your CD-ROM drive.



Select now the “Automatic search for a better driver (Recommended)” item and click “Next”.



Windows will now find the drivers on the LifeView FlyTV Prime 3X Installation CD and install them automatically.

After installing the driver, Windows informs you that it has done so successfully. Click "Finish".

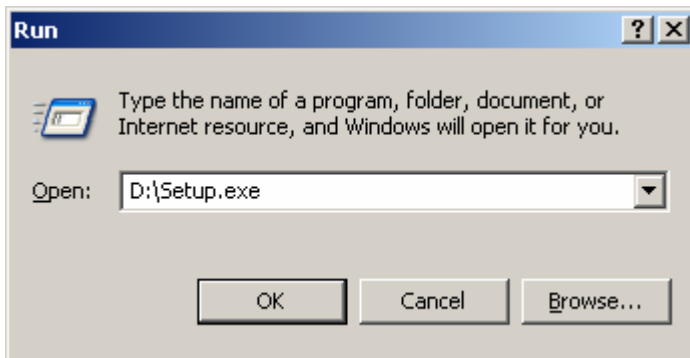
This completes the installation of the drivers and you can now start installing the application program.

### 3.5. Driver Installation for Windows 2000 / Windows XP

After rebooting, Windows 2000 / XP automatically detect the presence of a new hardware component in the system and tells you so in a “Found new Hardware Wizard” window.

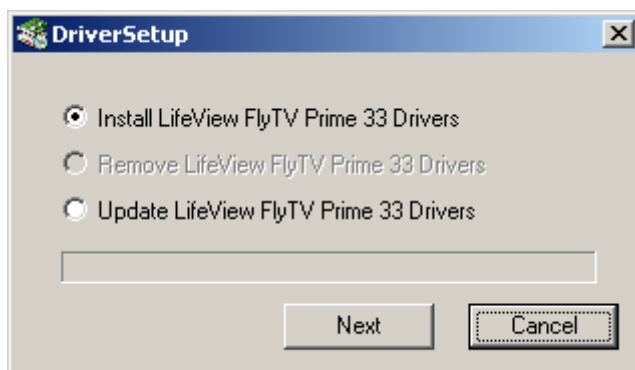


If you have not already done so, place the LifeView FlyTV Prime 3X Installation CD into your CD-ROM drive.



The CD will automatically start and show you the Installation Screen. Here please select “Lifeview Driver”.

If the Autostart program does not appear automatically when you insert your LifeView Installation CD, go to “Start” -> “Run” and type “D:\Setup.exe” (if D:\ is your CD-Rom drive)



In the next window please select “Install LifeViewTV Prime 3x Drivers”.

After that the installation of the Driver is finished.

**Note:**

The Setup Program currently supports only Windows 2000 / Windows XP for the following languages: English, German, Italian, French, Spanish, Dutch, Chinese traditional, Chinese simplified, Japanese

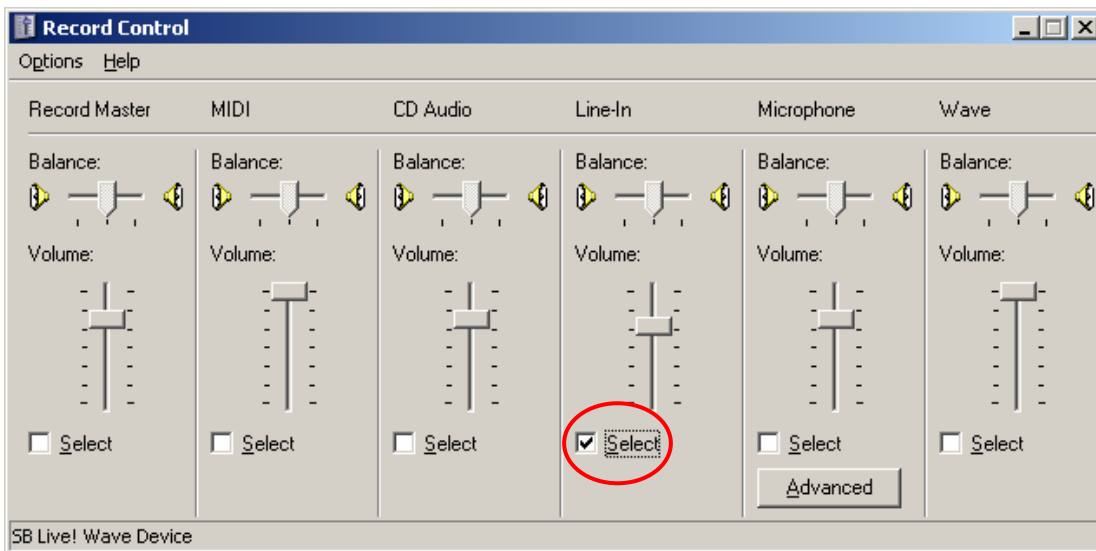
### 3.6. Settings for Sound Card Owners

To do so, proceed as follows:

1. Double-click the volume control icon illustrated as a speaker on the taskbar.



2. Be sure that the “Mute” option under the “Line-In” slider is not checked and that the “Line-In” slider is not at the bottom of its range. This makes sure you will be able to hear the tone of the TV signal through your system and control the volume. Other settings are required for recording (see instructions below):
3. Select the “Options\Properties” menu item.
4. Set the “Adjust volume for” option to “Recording”. Confirm your choice by clicking “OK”.
5. Now enable the check box below the Line-In slider and move the slider itself to its middle position. By checking the check box, you define the Line-In input of your sound card as a recording input source. This is essential if you want to record a video sequence with sound and want to use the sound card input to do so.



This completes the configuration of the sound card settings and you can now close the soundcard mixer!

With TVR 3.0, the above settings are not needed anymore, when you have the FlyTV Prime 33 or 34 models.

By choose “None” in the Audio Settings the Audio will be transmitted internal. See [Chapter 6.6 Page 19](#)

## 4. The LifeView TVR

The heart of your **FlyTV Prime 3X** is the TV Software - **The LifeView TVR**. The **LifeView TVR** program has a user-friendly design that makes it simple to use. The Utility allows the user to control the viewing and recording of TV and video, plus listen to FM stereo.

### 4.1. Installation of the LifeView TVR

The installation of the TV software can be carried out either using the Autostart program of the provided Driver and Application CD ("Software Installation"), or by executing a single file if you have downloaded the program from the Internet. If the Autostart program does not appear automatically when you insert your LifeView Installation CD, start it manually by running the "InstallCD.exe" file located on the LifeView Installation CD.

### 4.2. Launching the TVR Software

When starting your LifeView TVR Software program for the first time, a dialog box will appear to choose the correct country settings. When you click the "Ok" Button, the software will scan for available TV channels.



The software provides all necessary access to the important TV functions. Using the buttons you can control the functions of your TVR software.

### 4.3. Choosing your Video Source

- AIR TV** When you receive your TV Signal with Home Antenna
- CABLE TV** When you receive your TV Signal with Cable Antenna
- AV IN** An external device connected to your Composite-Video In
- S-VIDEO** An external device connected to your S-Video In
- FM RADIO** Listen to FM Radio (only FM Models)



## The LifeView TVR

---

Simply click on one of the above-described buttons, and as long there is a signal present at your card, you will see a picture.



You can adjust the size of the picture freely by dragging its edges using the mouse, and move the window to any screen location by clicking the window caption bar and dragging.

Double-clicking the TV picture switches the picture to full-screen display.

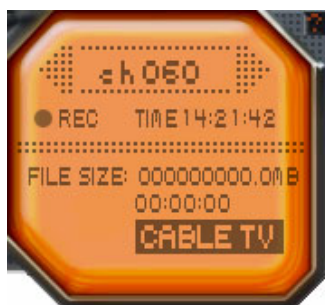
Double-clicking again switches back to window display mode.



On the right side you find the **Channel buttons**. Here you are able to click with your mouse on the channel numbers to switch to different channels.

Alternatively you can use the num block of your keyboard.

For additional information of shortcuts to use with your keyboard, please refer to [Page 23 Chapter 8.1](#)



The Info Panel shows you useful information about which channel you have tuned in, the current time and which mode you have chosen.

When you are in Record Mode, it shows the elapsed time since the Recording started and how much MB is used on your Hard disk.

In addition with the both arrows right / left you can switch the Channel Up and Down.



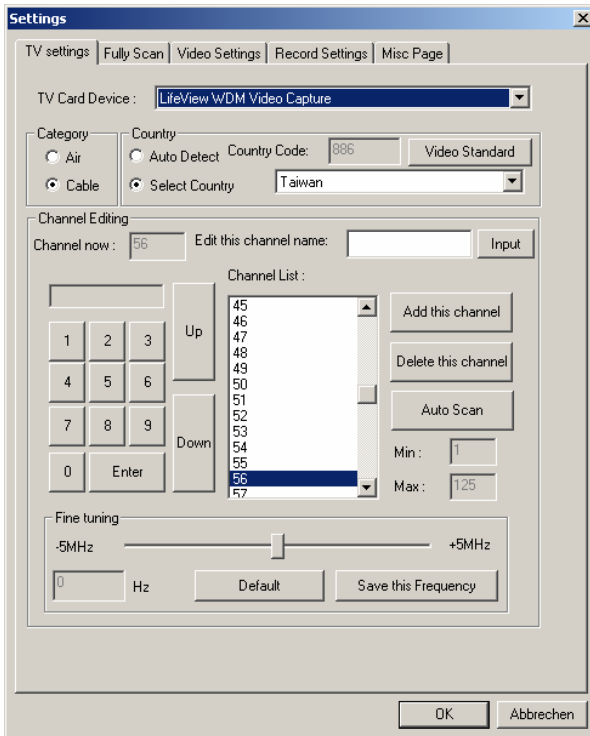
## 5. Settings



If you click the button for TV Settings, you have numerous options to configure your TV Viewing

### 5.1. TV Settings Dialog Box

The TV Setup dialog box allows you to select the TV system, scan for channels, select specific TV channels and rename the TV Channels.



#### 1. TV Card Device:

Choose here which device you want to use, in case you have more than one Video device installed.

#### 2. Category:

You can choose here, whether Air or Cable broadcasts your TV signal.

#### 3. Country:

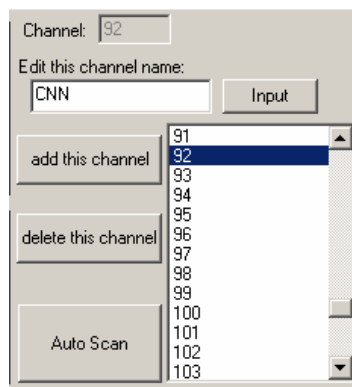
Sets your TV standard and TV channel table according to the country of your residence. In minor cases it is necessary to set the TV Standard manually by click on the button **Video Standard** and here select the TV Standard of your country.

#### 4. Finetuning:

When you don't have a clear reception of the tuned channel, you can make here a finetuning.

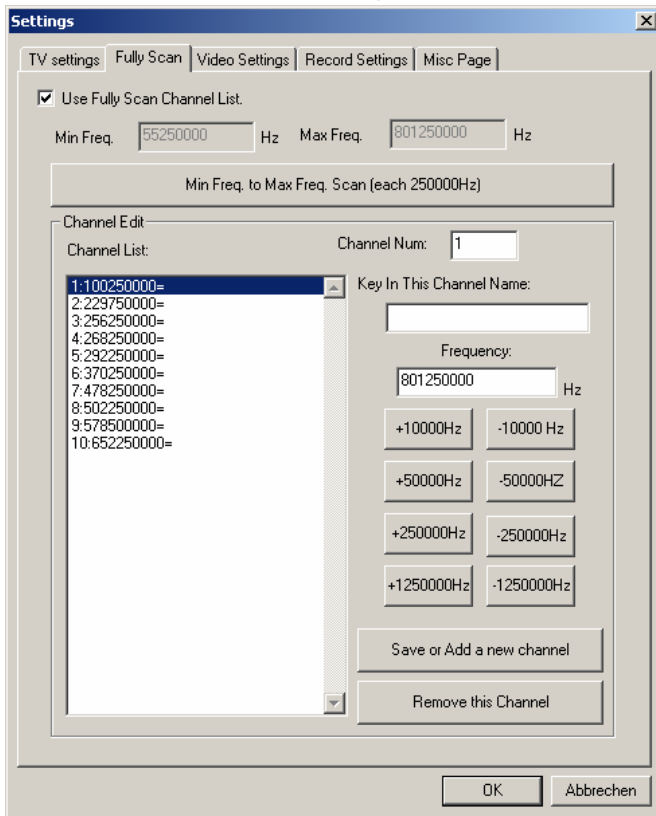
#### 5. Channel Editing:

Here you can edit and rename your favorite TV Stations. Double click the channel's number and click in the white field located under "Edit this channel name". Enter the name you wish to be displayed and click the "Input" button.



The mark opens an additional side bar, here you see the edited channels, and by double-click on them, you can edit the channel names too.

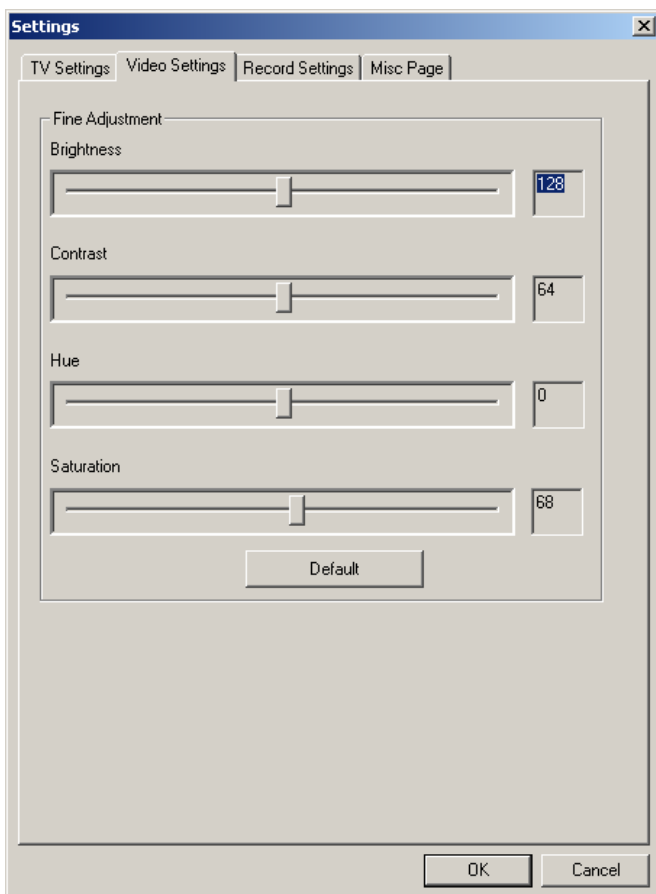
### 5.2. Fully Scan Dialog Box



Here you have the possibility to execute an Extended Scan, when during the frequency scan, are not all channels found.

Also you can add manually the needed frequencies.

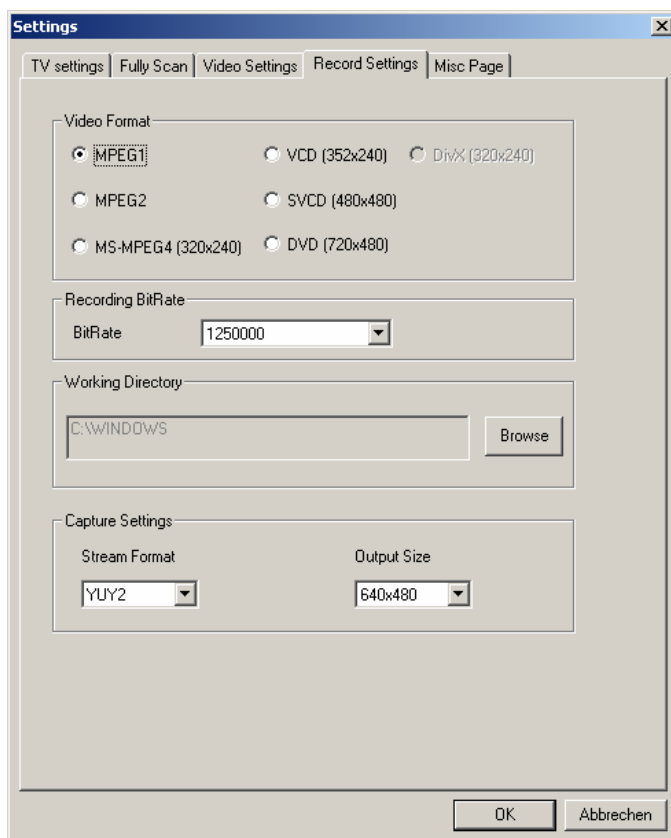
### 5.3. Video Settings Dialog Box



The Video Setting dialog box allows the user to adjust the TV display characteristics, including brightness, contrast, hue and saturation.

When you click on the “Default” Button all changes will disregard and the Default Settings will be restored.

## 5.4. Record Settings Dialog Box



The Record Setting dialog box allows you to select the format you want to record your files, which mode you want to use for that, and in which directory the files should be saved on your computer.

### 1. Video Format:

Here you can choose whether your movies will be recorded as MPEG-1/2, or VCD, SVCD, DVD Format. When you have MS-MPEG-4 or DivX installed in your system, you are also able to record in these formats, otherwise these options are grayed out.

### 2. Recording Bitrate

Choose here the BitRate of your recordings depending which file format you choose.

### 3. Working Directory:

Choose here the location where your movies / pictures are saved on your PC.

### 4. Capture Settings:

Choose here the output size of your recorded movies. This affects also your Video settings YUY2 stands for Overlay Mode, RGB555 is Preview Mode

#### Note:

**MPEG-1 File:** Compressed Video and Audio File

**MPEG-2 File:** Compressed Video and Audio File with better Quality

**VCD Format:** Conventional CD-Video Standard consists from MPEG-1 file

**PAL:** 352 x 288 pixels with 25 Frames per Second

**NTSC:** 352 x 240 pixels with 29.97 Frames per Second

**SVCD Format:** Upper Standard from Video CD consists from MPEG-2 file

**PAL:** 480 x 576 pixels with 25 Frames per Second

**NTSC:** 480 x 480 pixels with 29.97 Frames per Second

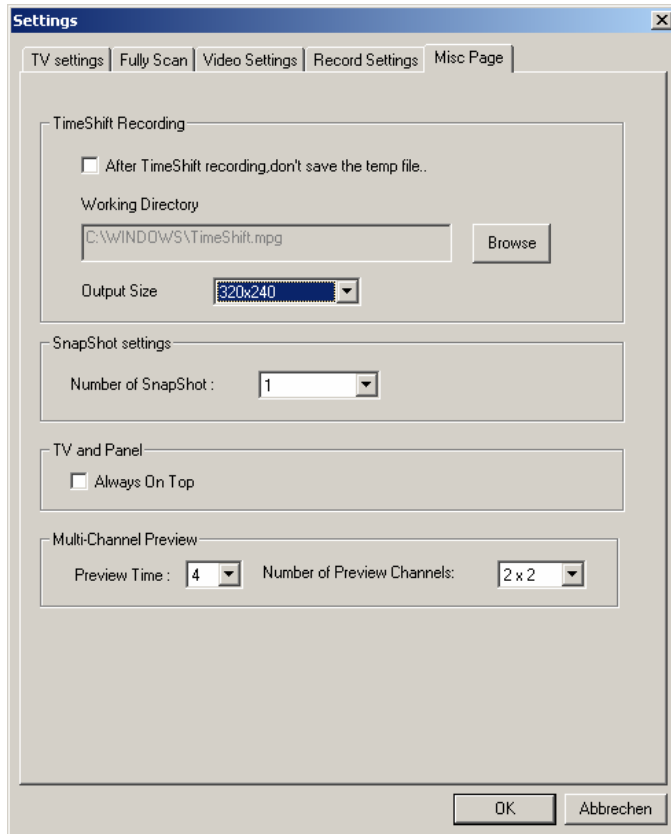
**DVD Format:** High Quality Video Standard CD consists from MPEG-2 file

**PAL:** 720 x 576 pixels with 25 Frames per Second

**NTSC:** 720 x 480 pixels with 29.97 Frames per Second

The available resolution depends on your country settings. When you choose VCD, SVCD, or DVD the output size of the recorded movies is not changeable, to make ensure to produce a standard VCD, SVCD or DVD. DivX and MPEG4 are also limited to a fixed output size.

### 5.5. Misc Page Dialog Box



The Misc Page Dialog box allows you to select additional Settings for Record and Picture.

#### **Time Shift Recording:**

When the Box is checked, the Temporary recorded files won't be deleted after stop the Time Shift Mode. (see [Page 21](#) for additional description of the Time Shift Mode). Also you can here define the resolution of the time shifted recordings

#### **Snapshot Settings:**

Here you can define, how much snapshots are taken, when you click the Snapshot Button. (see [Page 18](#) for additional description of the Snapshot function)

#### **TV and Panel:**

When you check the box "Always on Top", the TV Window will be always in front of the other applications

#### **Multiple Channel Preview:**

Here you can choose how long the available channels are shown, and how much channels you want to preview.

## 6. Additional Settings

### 6.1. Schedule Recording



**Schedule Recording Settings**

Weekly Schedule

Source: Cable TV

TV Channel:

From: 3:16:58 PM To: 3:16:58 PM

Monday  Tuesday  Wednesday  Thursday  
 Friday  Saturday  Sunday  All

Designated Schedule

Source: Cable TV

TV Channel:

From: 6/27/2003 3:16:58 PM  
To: 6/27/2003 3:16:58 PM

OK Cancel

After you click the button for **Schedule Recording**, you will find in your Taskbar a new symbol.

When you click on this new symbol, a new window appears where you can plan the settings for Weekly and Designating Recordings

The **Weekly Schedule** is for programming recurring TV shows, which are broadcasted every day or every week at the same time. Give the file a specific name, choose the source and in which file-format you want to record, and confirm it by press the "OK" Button.

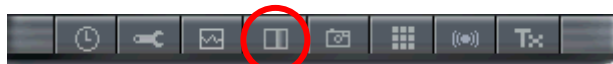
In the **Designated Schedule**, you can program one event, which is broadcasted by the TV Station. Give the file a specific name, choose the source and in which file-format you want to record, and confirm it by press the "OK" Button.

## 6.2. Auto Scan



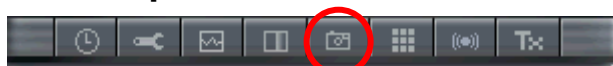
When you click the button for **AutoScan**, you have the possibility to scan the available TV Channels and these will be saved.

## 6.3. Change Skin



If you click the button for **Change Skin**, you can customize the view of the Application program.

## 6.4. Snapshot



When you click the camera icon for **Snapshot**, a picture will be taken from the current frame of the TV Picture, and saved in your Gallery. The Gallery is a shortcut to the directory on your HD, which you have defined before in the Record Settings in [Chapter 5.3. Page 14](#) – i.e. C:\Downloads

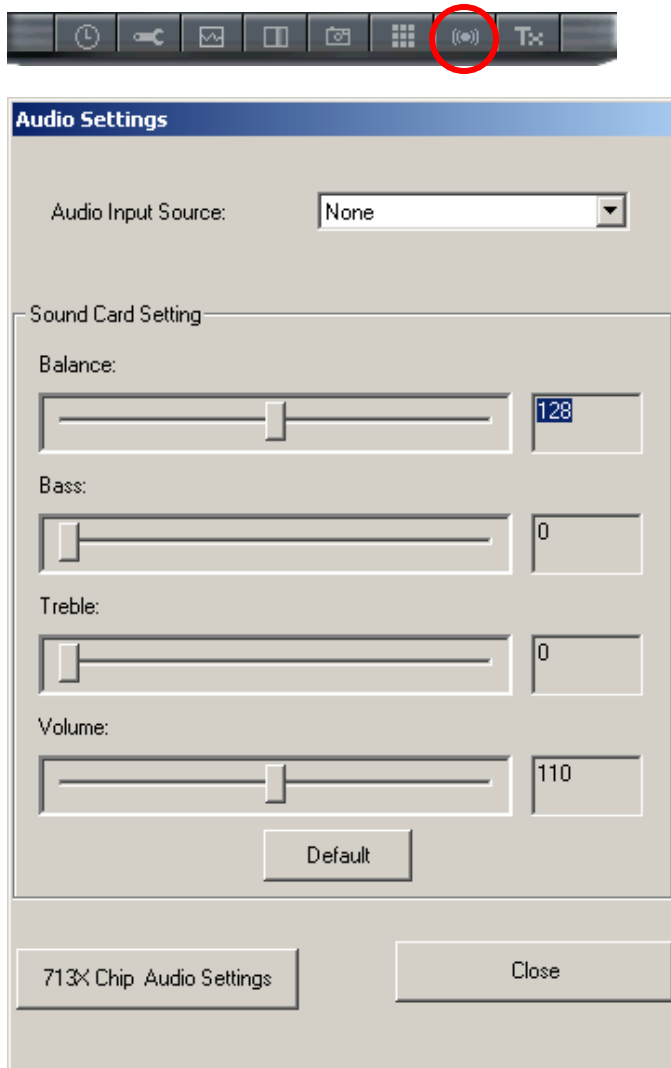
## 6.5. Multiple Preview



When you click the button for **Multiple Previous** you will see the current programs of all available channels. The preview time and how much channels are defined in Misc Page Settings in [Chapter 5.5. Page 16](#).

When you see a program, you want to watch, simple double-click on it.

## 6.6. Audio Settings

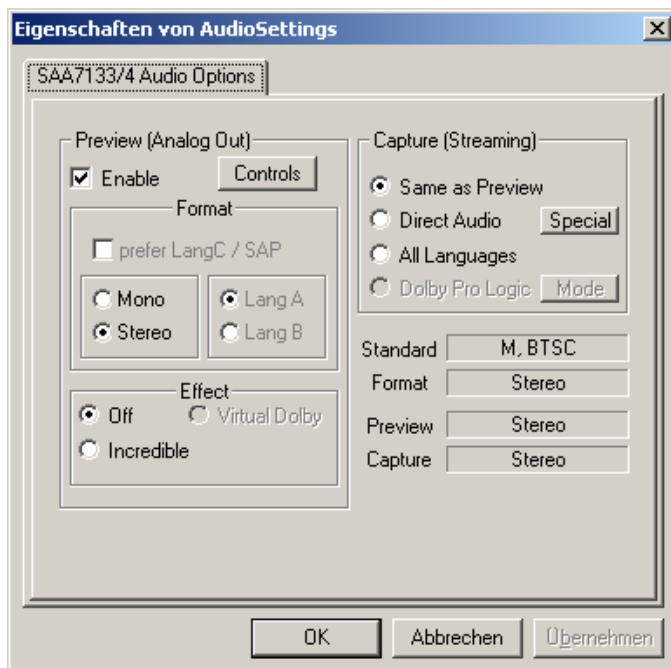


When you click the button for **Audio Settings**, a new window will open, where you can define, which Source is used for the input to your soundcard.

When switching to “None” the internal PCI Bus will be used, for listening and recording TV. The Audio Loop back cable is in this case not needed anymore.

**Note:**

This function is not available for FlyTV Prime 30



By clicking on the button “713X Chip Audio Settings” you access the properties of the audio settings. Here you define whether you want to receive the TV-Program in Stereo or Mono. As additional service some TV-Stations broadcast their program simultaneously in two languages. This can be selected by checking the “Format” button.

When the settings are grayed out, this means the functions are not available.



## 6.7. Teletext



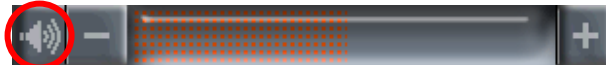
Simply clicking the Tx button opens the Teletext window.

This service is not available in all countries. Furthermore not all TV Stations provide Teletext service. Everyday, however, competent editorial offices provide a selection of quickly and easily accessible information, which you can access for free, since it is constantly transferred along with the TV picture via the so-called vertical blanking interval of the picture signal. As long as there is an antenna signal present at the card

and you have already scanned and stored channels you will now see the Teletext information offered by the corresponding TV station

Surfing through the pages is conveniently easy thanks to the preloaded text tables. Use the arrow buttons (on the software interface, the PC keyboard or the remote control) to navigate from one page to another or enter a page number directly. You can also click a page reference directly to call up its content, practically with no delay.

## 6.8. Volume



The **Volume Slider** lets you control the volume of the Audio  
+ increases the volume  
- decreases the volume

The **Loudspeaker symbol** has a **Mute** function.

One click on it turns the audio off  
another click turns it on again.



## 7. How to record a TV Program



### 7.1. The Record Button



With one single-click you have the possibility to record the current TV-Program while watching it.

By clicking again, the recording will stop.

You will find the recorded file in your Gallery in the format you have selected in the Record Settings before in [Chapter 5.3. \(Page 14\)](#) - i.e. C:\Downloads



### 7.2 The Time Shift Function



With the Time Shift function you are able to record the current TV Program and watch it later.

Simply click the Time Shift button and you stop watching the current TV Program and the rest will be recorded so you can watch it later, click again and your Timeshift recording will stop.

When you want to see the recorded program, just simple click back button, and you see the recorded files, while in the background the TV program is still recorded. So you won't miss the rest of your program.

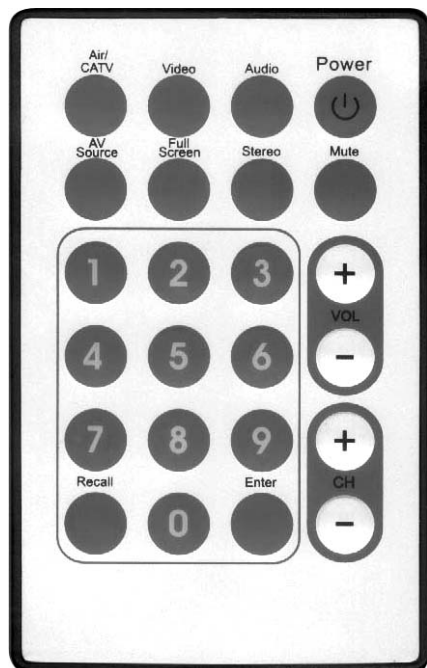


These additional Time Shift buttons give you the possibility, to move back to the beginning of the recorded file, pause it, resume the viewing or move forward. The Recording will stop after press the Stop Button



In Addition, the **Time slider** shows you the current position of the recording, which continues in the background.

## 8. The Remote Control



1. **Air/CATV:** Click this button to toggle between Air and CATV channels.
2. **Video:** Click this button to open the TV Setup Dialog Box.
3. **Audio:** Click this button to open the Audio Setup Dialog Box.
4. **Power:** Press this button to terminate FlyTVR program.
5. **AV Source:** Click this button to switch the input source.
6. **Full Screen:** Click this button to switch between Full Screen and the previous size.
7. **Stereo:** Select between Stereo and Mono reception.
8. **Mute:** Press this button to mute the sound.
9. **Numeric Keypad:** Selects the desired channel number directly.
10. **Volume Up/Down:** Increases/decreases the audio level.
11. **Channel Up/Down:** Click this button to go to next/previous channel.
12. **Recall:** Jump to last selected TV channel.
13. **Enter:** Click this button to make a snapshot of the current TV Picture

## 8.1. Accelerator Keys Summary

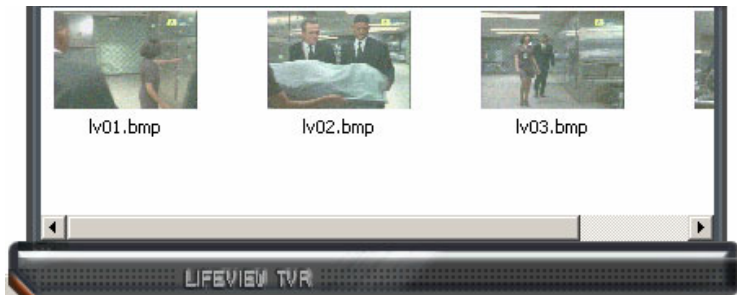
Use the following Hot-Key table for reference to conveniently control TV function via a PC keyboard or a wireless keyboard.

Keyboard	Remote Control	Description
Num 0~9	Num 0~9	Channel Number
Page Up	CH+	Channel Up
Page Down	CH-	Channel Down
Arrow Up	Vol+	Volume Up or Video Setting (Brightness, Hue, Contrast, Saturation) or Audio Setting (Balance, Bass, Treble)
Arrow Down	Vol-	Volume Down or Video Setting (Brightness, Hue, Contrast, Saturation) or Audio Setting (Balance, Bass, Treble)
Spacebar	Enter	Snapshot
R	Recall	Recall Previous Channel
I	AV source	Input Source (Air, Cable, AV-in, S-Video in, FM)
C	Air / CATV	Switch between Air / Cable reception
V	Video	Video Setting (Brightness, Hue, Contrast, Saturation)
A	Audio	Audio Setting (Balance, Bass, Treble)
M	Mute	Mute on / off
S	Stereo	Stereo / Mono
F	Full Screen	Full Screen Mode On / Off
Alt+ / or ?		About Dialog
Ctrl+Alt+F4	Power	TV Close / Open
+		Add Channel
-		Delete Channel

## 9. The Gallery



By clicking this button, you will open the Gallery.



By right-click on a file you open a context menu for additional possibilities.

The  or  button will close the Gallery.

### 9.1. The Function Buttons



Opens your Email program and sends your file as attachment



Changes the view from Thumbnails to List and Details



Opens Microsoft Media Player to watch the Recorded Movie



Opens Microsoft Paint for editing your pictures

## 9.2. FM Radio (only for FM Models)

### Switching to FM Mode

The FlyTVR Software allows the user to listen to FM Stereo.



Simply click on the FM Radio button and you begin listening to FM Stereo on your computer.

### Auto Scan



You have here the same Auto Scan possibilities like in the TV Application.

**Note:** For further details, please refer to the On-Line Help of the software.

## 10. The LifeView Suite

The LifeView Suite includes the **LifeView TVR**, **LifeView DV**, **LifeView Encoder**, **LifeView Editor** and Album applications.



**LifeView Suite** provides total multimedia control. You can use it for managing TV programs, DV control, video or image albums, video encoding as well as video editing.



**A. LifeView TVR:**

**LifeView TVR** allows TV viewing and video **capture** (TV and AV capture).



**B. LifeView DV:**

This function is not available with **FlyTV Prime series**.



**C. LifeView Encoder:**

**LifeView Encoder** converts AVI video files to MPEG 1 or 2-file format.



**D. LifeView Editor:**

**LifeView Editor** adds powerful digital video editing capability to your PC. It possesses a high performance MPEG encoding engine that saves edited digital videos into small, high quality MPEG-1 files. It can manage and edit multiple files simultaneously too.

## 11. Using the LifeView Encoder

- Converts AVI file format to MPEG-1
- High speed and superior quality
- User-friendly and functional GUI
- Easy to control in batch job mode
- Provides detailed encoding information and sort function

### 11.1. About LifeView Encoder








**Edit Window:**  
Display and edit information about AVI file name, status, etc.

**Text Window:**  
Displays detailed converting information.

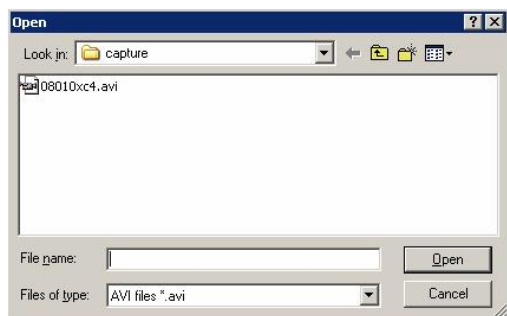
**Display Window:**  
During conversion, displays source image


#### Button Functions:

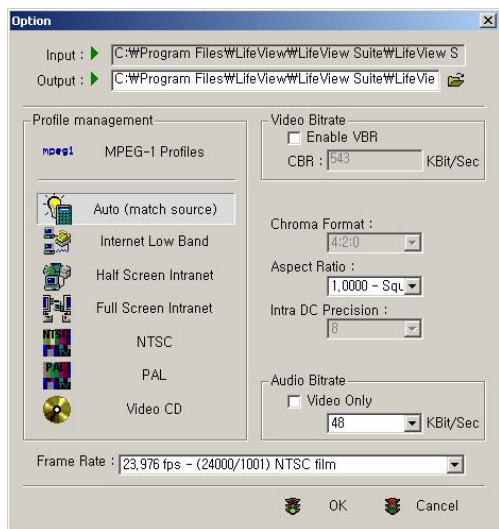
-  **Add Button:** Add source file (AVI) to Edit Window.
-  **Delete Button:** Delete the marked job in Edit window.
-  **Edit Button:** Edits data rate for the output file (MPEG file).
-  **Convert Button:** Converts the source file with "waiting" status to MPEG file
  - A. Compression of Video stream.
  - B. Compression of Audio stream.
  - C. Combines compressed video and audio data.
-  **Stop Button:** Stops the compression.

During conversion, the **Encoding Button**  reverts to the **Stop Button** 

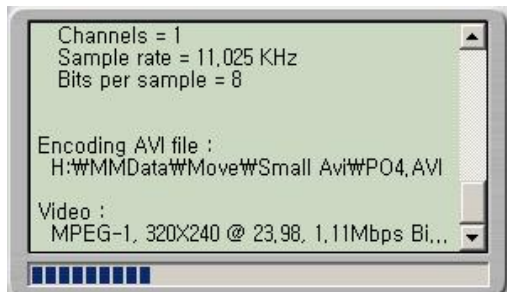
## 11.2. How to Encode AVI to MPEG files




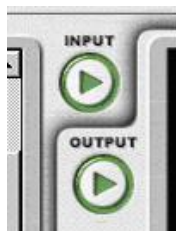
1. To use this application, you need to have AVI files.
2. To encode AVI files into MPEG format files, start **LifeView Encoder** and select AVI files to encode. Click **Add**  button with your mouse. Then the AVI File Open dialog box opens on the screen. Browse to the directory in where the AVI files are stored and select the AVI files you want to encode.



3. At the Options dialog box, specify the path and filename for target. Select one of the conversion options; either MPEG-1 or MPEG-2. You can also specify Video/Audio bit rates, compression method, video frame rate, etc.



4. Click the **Encoding Button**  to start the encoding process. The following figure shows the encoding job in process.



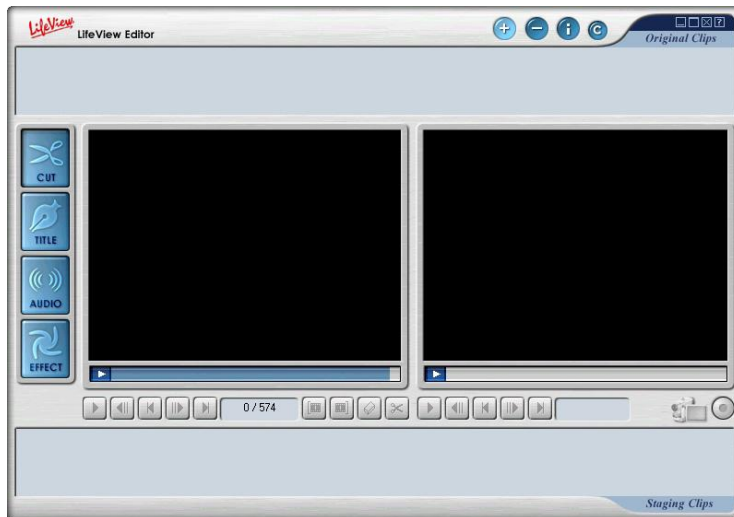
5. If you want to view the source AVI file or encoded MPEG file, select the job from the list and click AVI Play or MPEG Play on the Center bottom of the screen.

**Note:** For further details, please refer to the On-Line Help on the software.



## 12. Using the LifeView Editor

- Edit MPEG videos on a frame-by-frame basis
- Overlay video with standard or animated titles
- Add audio tracks such as music on top of existing audio.
- Apply special color, filter, and transition effects to your videos.

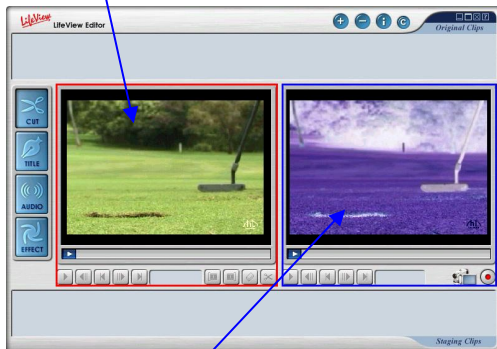


- File Open
- Clip/File Delete
- Clip/File Properties

### 12.1. About LifeView Editor

#### Video Display Area:

##### Original Video Display Window



##### Edited Video Display Window

#### 1. Original Video Display Window:

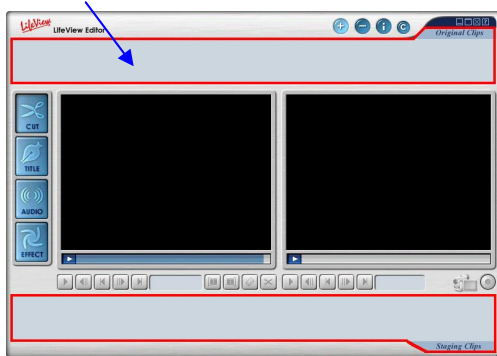
- Displays videos in Original Clips (Double Click or Drag and Drop).
- Videos in Staging Clips cannot be displayed in this window.
- In *Title Editing* mode, Title can be edited in this window.
- In *Audio Editing* mode, it displays registered audio files.
- In *Special Effect* mode, it displays all available filters
- Displays progress information when final video is created or video is converted to VCD

#### 2. Edited Video Display Window:

- Displays videos in Staging Clips (Double Click or Drag and Drop)
- Videos in Original Clips can be displayed in this window.
- Preview function displays edited video in this window

## Original and Staging Clips

### Original Clips:



### Original Clips



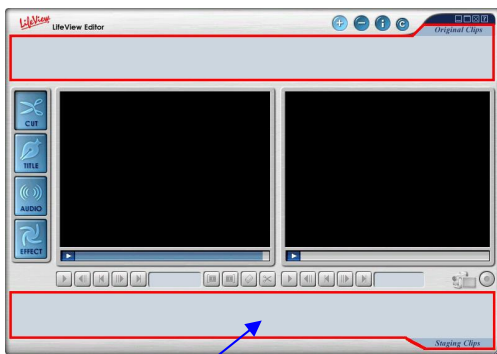
- This is the area where video clips that need to be edited are added and managed.
- Video clips can be dragged and dropped into the Original Clips area.
- The sequence of video clips added can also be quickly re-arranged by drag and drop.

### 1. How to Add Video Clips:

- Use the button in the menu area to browse and select video clips to add to the Original Clips area.
- Drag and Drop video files to the Original Clips area.

### 2. How to View and Manage Video Clips in the Original Clips Area:

- To view a video clip in the Original Clips area, either double click on the video clip or drag and drop the video clip from the Original Clips area on to the Original Video Display window.
- Right clicking on the mouse will bring up a Popup Menu. This menu performs the following functions:
  - Copy
  - Delete
  - Show property information.
  - Convert to VCD



### Staging Clips

### Staging Clips



- This is the area where video clips are added after frame ranges are specified.
- Video clips can be managed for further editing in this area.
- Editing, deletion and sequence arranging are done here.
- File properties for each video clip can be obtained by right clicking on the clip.
- Video clips are acted upon and added to the Staging area using the four application buttons on the left side of MPEG Editor. Those four buttons are "Cut", "Title", "Audio" and "Effect".

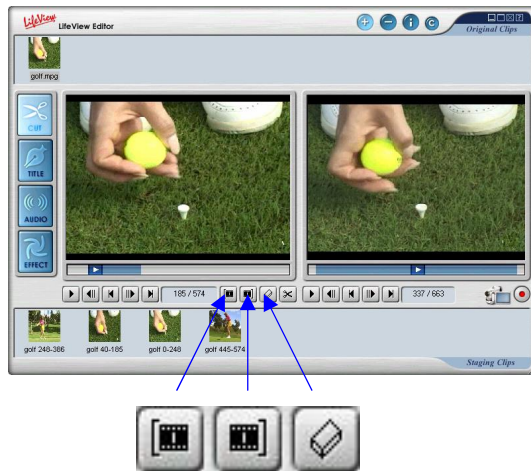
### **1. How to Add Video Clips to the Staging Clips Area:**


- Video clips can be added into the Staging Clips area after selecting frame range from video clips.
- Drag-and-Drop and entire clip from the Original Clips area to the Staging Clips area.
- Copy a video clip from the Original Clips area and paste it in Staging Clips area.
- Drag-and-Drop or Copy & Paste can be used in any of the four editing modes:
  - Frame editing,
  - Title editing,
  - Audio editing,
  - Special effect editing.

### **2. How to Manage Video Clips:**


- Each edit mode shows its own menu and window.
- Video clips can be played in the Preview window.
- Right mouse clicking on a video clip brings up the Popup Menu. This menu supports the following functions:
  - Cut
  - Copy
  - Delete
  - Show property information

## 12.2. Frame Edit Mode




 Specify the beginning of a frame range to be cut out by clicking on the "Mark-in" button. (Progress bar will appear as below.)




 Specify the end of a frame range to be cut out by clicking on the "Mark-out" button. (Progress bar will appear as below.)




 Delete a specified frame range by clicking this button. The frame range will disappear and the Progress bar will appear as below.



### 1. Adding Video Clips:

- Use the  button in the menu area to browse and select video clips to add files to the Original Clips area.
- Drag and Drop video
- Double click on added video clips in Original Clips area or Drag and Drop them to Original Video Display Window to view and select frames for further editing.

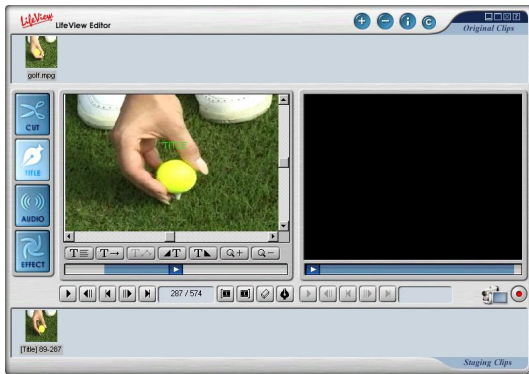
### 2. Selecting Frame Ranges for Video Editing:

- Click Mark-in to specify the beginning of a clip and Mark-out to set the end of the clip.
- Click on  to move the clips from the Auto Edit window to the Staging Clips


### 3. Editing Video Frames:

- Select video frames in Staging Clips area.
- Users can re-arrange the sequence of videos.
- Users can repeat the same scene by putting the same video frames multiple times.
- Users can delete sections of video they do not want.
- Users can confirm the video before final saving using preview function.
- User can repeat the above steps.
- Save the final video when editing is completed.

## 12.3. Title Edit Mode



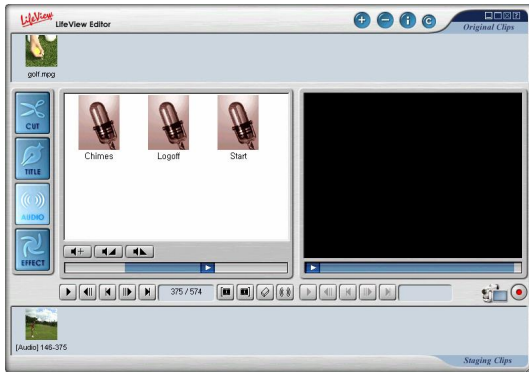
### 1. Adding Video Clips:

- Use the button  in menu area to add video clips.
- Use Drag and Drop to add video clips.
- Double click on added video clips in Original Clips area or Drag and Drop them to Original Video Display Window to specify frame range.


### 2. Adding and Editing Titles:

- Use title edit buttons to add and edit title.
- Title edit buttons show up on Original Video Display Window.
- Specify the position of title using mouse.
- Specify the details of title such as font style, size, color, title text and etc.
- Specify how title will move - straight line or curve line.
  - Straight line: Select a title and drag it using mouse.
  - Straight line shows up.
  - Curve line: Two dots show up next to the straight line. Create a curve line by manipulating the dots.
- Zoom in and zoom out allows users to see the entire picture.
- Preview allows users to confirm how title will work.
- Users can repeat the above steps to add many titles.
- Video frames that have title effect can also have audio effect and special effect
- Use Save button to save final videos.


## 12.4. Audio Edit Mode



### 1. Two Methods to Add Video Clips:

- Use the  button in the menu area to browse and select video clips to add to the Original Clips area.
- Drag and Drop video files to the Original Clips area.  
To view the video clips in the Original Clips area, either double-click on a video clip or drag-and-drop a clip into the Original Video Display window. Clips in the Original Video Display window are not in a position to be edited.

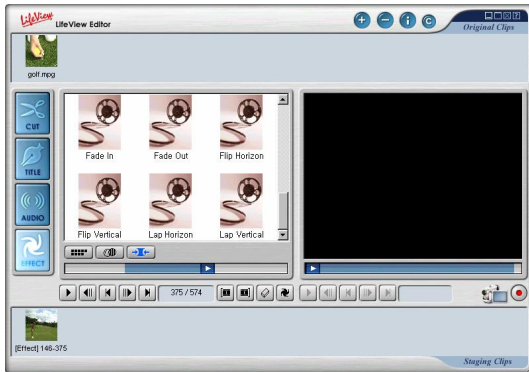
### 2. Selecting Frame Ranges for Audio Editing:

- Click Mark-in to specify the beginning of a clip and Mark-out to set the end of the clip.
- Next, click on the  button to move the clips from the Auto Edit window to the Staging Clips area.


### 3. Editing Audio:

- Video clips must be taken from the Audio Edit window to the Staging Clips area.
- Audio files that can be used during the editing process are displayed in the Audio Edit window.
- If there are no audio files in the Audio Edit window, click on the audio editing button to locate and add audio files for editing purposes.
- Highlight the video clip for audio editing. Next click on an audio file in the Audio Edit window. This process of highlighting a video clip and clicking on an audio file is how audio is applied to the video clip.
- Overwriting or mixing the audio on the clip is controlled by properties embedded within the audio file. Double-click on the audio file and adjust the volume ratio between the original audio and the new audio.
- Each video clip can have its own audio file applied to it.
- Use preview to test the audio effect.
- Repeat the above steps as many times as needed.
- Video frames that have audio effects can also have “Title” and “Special” effects. Then use the **Save** button to merge and save the changes.

## 12.5. Special Effect Edit Mode




### 1. Two Methods to Add Video Clips:

- Use the  button in menu area to browse and select video clips to add to the Original Clips area.
- Use Drag and Drop to add video clips to the Original Clips area.

#### Note:

To view video clips in the Original Clips area, either double click on a video clip, or drag and drop a clip into the Original Video Display window. Clips in the Original Video Display window are not in a position to be edited.

### 2. Selecting Frame Ranges for Special Effect Editing:

- Click the Mark-in button to specify the beginning of a clip and the Mark-out button to set the end of clip.
- Next, click on the  button to move clips from the Audio Edit window to the

### 3. Apply Special Effect Filters:

- Apply any or all of the following three filters to a video clip
  - **Color Filter:** Change colors of videos.
  - **Effect Filter:** Add special effects such as a mosaic effect on videos
  - **Transition Filter:** Add transitional effect on videos.
- To get started, select a frame range (see point No.2 from above) and apply a filter to it.
- A special effect can be applied to more than one frame range of a video clip.
- Multiple special effects can be applied to the same frame range or several frame ranges.
- Video frames with special effect edits can also add audio and title effects.
- Preview allows users to confirm what the special effect looks like.
- Use the Save button to merge and save the changes.

**Note:** For further details, please refer to the On-Line Help on the software.



## 13. Technical Support

### 13.1. Troubleshooting

**Q: Why do I hear TV sound, but see no video display?**

A: Some VGA cards can't support the Overlay display function. Simply select non-overlay mode in the **Video Setting** dialog box.

**Q: Error message: Drivers have not been digitally signed in Windows 2000/XP.**

A: Saying "OK" to this should continue the installation, acknowledging that you are aware that these drivers have not been certified by Microsoft.

**Q: Why I can't see any picture while capture?**

A: Check graphics card display settings, try both 16bit and 24bit high color, 800\*600 Resolution

**Q: Why I can't record sound but see the picture?**

A: Please refer to [Chapter 3.6](#) for the correct settings

**Q: What Operating Systems (O/S) does FlyTV Prime 3X support?**

A: Now the installation CD disk only provides the WDM driver for Windows®98SE, ME, 2000 and XP. If you seek other operating system drivers, please see our website

**Q: What can I do, when I get horizontal lines on my screen when watching TV?**

- A:
1. This could have to do with the bandwidth on the PCI bus. Place the card closest to the PCI busmaster slot or place it closest to the AGP slot, but try to avoid PCI slot 1
  2. There are some BIOS setting that you can change to get better performance. It should be noted that you might not have all these settings. There are also a number of various bios setups available, you should consult the documentation that came with your system for information on properly navigating your bios.
    1. Assign IRQ to VGA (enabled, disabled)  
For the PCTV to work with the graphics card this IRQ has to be enabled.
    2. PCI Master 0 Write Waitstate (enabled, disabled)  
should the PCTV not function correctly, try switching this option. Enabling write waitstates slightly slows down the PCI write access, which might help solving problems with stability on some motherboards. Disabling write waitstates is faster but might cause problems.
    3. IRQ Activated By (edge, level)  
For modern PCI cards (like the FlyTV Prime 3X) this option should be "level".
    4. PCI Latency Timer (N)  
Trying a higher value can help if you get "noise" or stripes in the TV picture if this not related to a bad reception



5. PCI Peer Concurrency (enabled, disabled)  
If the PCTV does not run stable, test if switching this option helps.
6. CPU to PCI Write Buffer (enabled, disabled)  
If the PCTV does not run stable, test if switching this option helps.
7. USB Controller (enabled, disabled)  
With some motherboards USB and AGP are "internally connected", should this be the case the USB controller on the motherboard has to be enabled for the AGP-mainboard drivers to work correctly.
8. Use USB IRQ (enabled, disabled)  
If this option can be found in the bios settings, enable the USB IRQ to fully activate the USB controller.
9. CPU to PCI Write Buffer (enabled, disabled) should the TVR crash during operation, test if switching this option helps

**Q: Why I don't hear any sound, but see a TV picture?**

A: First make sure that the audio out from the FlyTV Prime 3X is connected to the line in on your sound card.  
Next, make sure that your Windows mixer settings are set correctly. You can check for this by double-clicking on the speaker icon next to the clock in the bottom right hand corner of the screen. Make sure all the appropriate levels are set about 3/4 the way to the top. You can also click on Options - Properties - Recording and then set these levels the same.  
You may have to recapture your video.

**Q: What can I do, when the audio is sometimes disappearing after 1 minute?**

A: If you have Windows Messenger running on the task bar, please disable it or close it. You should update Messenger with the last version available.  
The problem can also happen with some anti-virus software.

## 13.2. Contact Us

If you have attempted to resolve any **FlyTV Prime 3X** problems and still require assistance, contact us by e-mail at: [support@lifeview.com.tw](mailto:support@lifeview.com.tw). Alternately, you may access our technical support page on our website <http://www.lifeview.com.tw> where driver updates will be posted and available for download.