

OK100

Cloud Keyboard Security

User Manual v.1.24

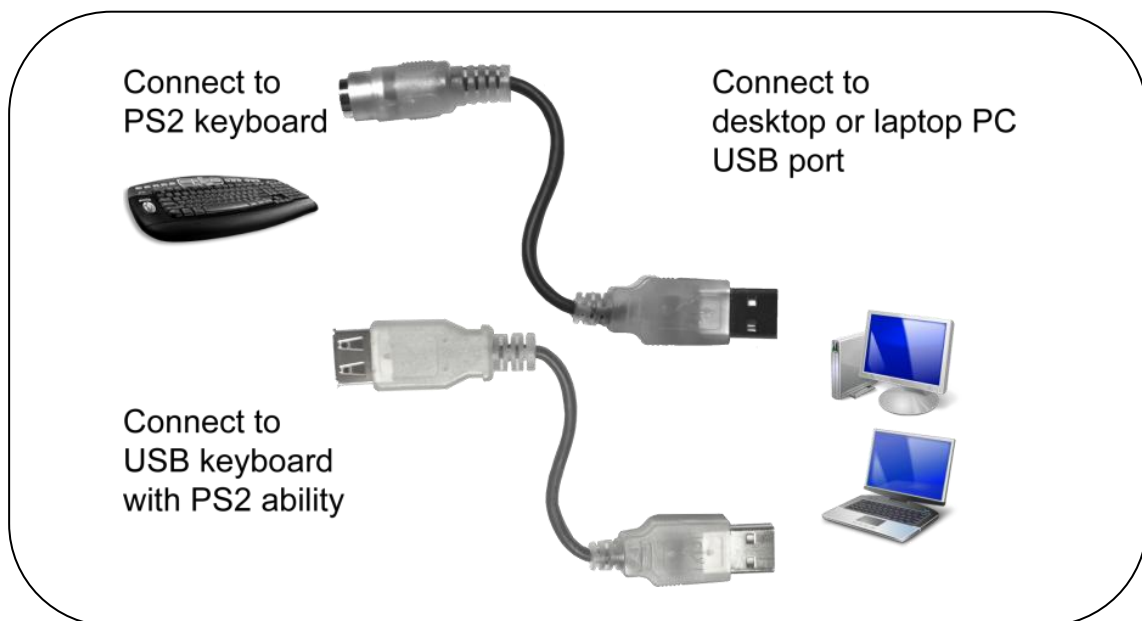


Contents

- 1. **Hardware Installation** 3
- 2. **Software Installation**..... 4
- 3. **Basic Usage** 6
- 4. **Advanced Setting** 7
 - 4.1 **OK100 Menu**..... 7
 - 4.2 **OK100 Setting Dialog** 8
- 5. **Notation**..... 13
 - 5.1 **OK100 Encrypted Key** 13
 - 5.2 **Limitation**..... 13
 - 5.3 **Uninstallation** 14

1. Hardware Installation

- 1.1 Plug your USB or PS2 keyboard (male connector) to OK100 Adapter (female connector of USB or PS2). Please note that there are two kinds of the connector for the keyboards.
- 1.2 Plug OK100 Adapter USB male connector to your PC (desktop or laptop).
- 1.3 The Windows will install the default driver for OK100. You should wait until Windows tell you a new device is ready to use.



- 1.4 Note that OK100 hardware is not a USB-to-USB bridge, but support a PS2-to-USB bridge with USB keyboard connector. You can't connect a pure USB device (keyboard and others) to work. OK100 hardware only supports PS2 keyboard protocol in hardware because most of the keyboard controller inside the keyboard is "combo" chip (both support USB and PS2 host interface at the same time).

2. Software Installation

- 2.1 Download the OK100 setup file from <http://www.othe.com.tw/>.
- 2.2 Execute the setup file to install the OK100 Cloud Keyboard Security software.
- 2.3 The OK100 Cloud Keyboard Security Setup Procedure will show as follow.

OK100 Cloud Keyboard Security Setup Procedure:

1.



2.



3.



4.








5.**6.****7.****8.**

3. Basic Usage

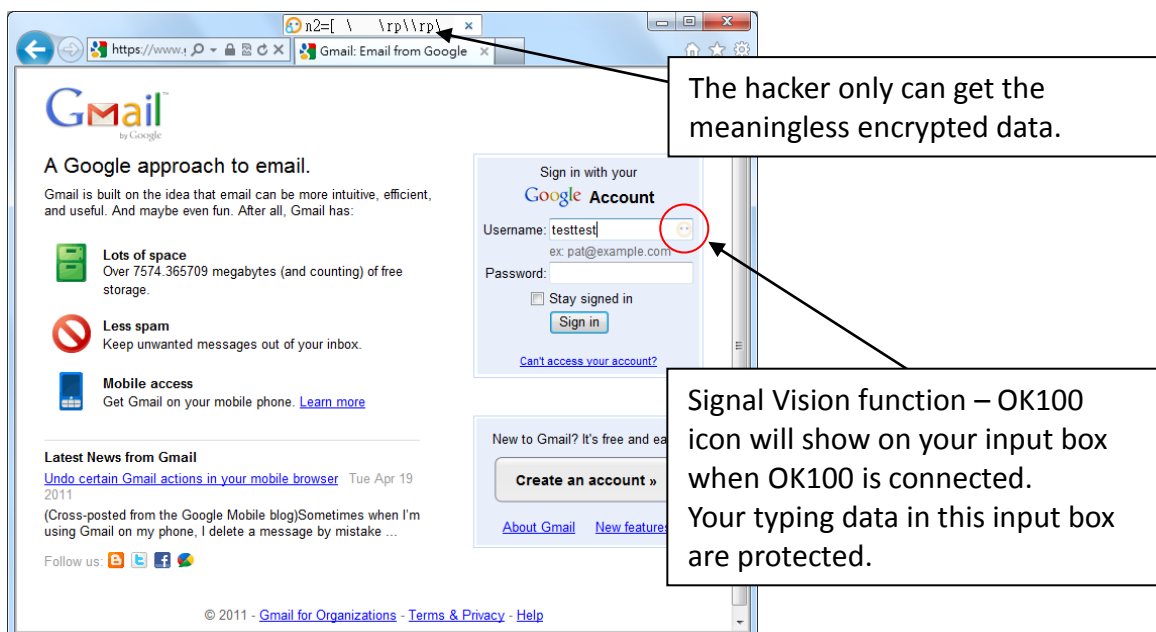
Important Function:

- OK100 will connect to the supported application software when enabled. The data from keyboard in the application software will be protected by OK100. OK100 will auto change the encrypted key by mouse left click, <Tab> key, <Caps Lock> key and <Enter> key.
- Win+Ctrl keys are the hot key for switching OK100 security mode between Enabled and Disabled.
- Win+Esc keys are the hot key for turn on/off the OK100 Keylogger Bar.

OK100 will auto-run after reboot by default setting. The OK100 icon  will appear on system tray area. There are 4 states of OK100 icon on system tray for representing OK100 status.

-  Enabled: When the OK100 software is enabled and hardware is ready.
-  Connected: When the OK100 is connected to the application software. The data from keyboard are protected in this state.
-  Disabled: When the OK100 software is disabled.
-  Disconnected: When the OK100 hardware or software mode driver is not found.

When the OK100 is connected to application software, the data from keyboard are protected as follows.



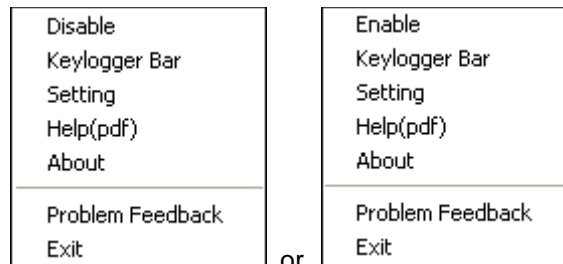
The hacker only can get the meaningless encrypted data.

Signal Vision function – OK100 icon will show on your input box when OK100 is connected. Your typing data in this input box are protected.

4. Advanced Setting

4.1 OK100 Menu

By right click the OK100 icon in system tray, the OK100 menu will appear as follows.



- Select **[Disable]/[Enable]** to disable/enable the OK100 security mode.
- Select **[Keylogger Bar]** or left click the OK100 icon in system tray, the OK100 Keylogger Bar will appear as below:

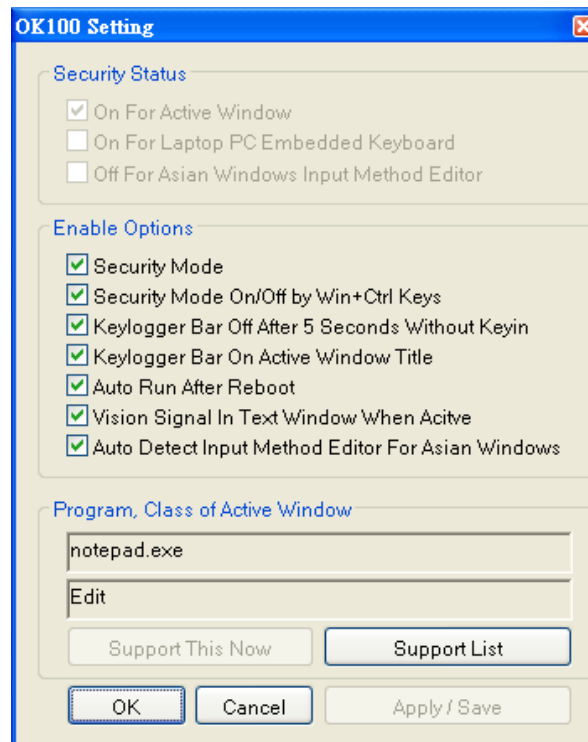


You can know the OK100 encrypted characters for each word when you are typing.

Right click the OK100 icon on the Keylogger Bar will pull down the OK100 menu, too.


- Select **[Setting]** in the menu or left click the OK100 icon on the Keylogger Bar will open the setting dialog of OK100.
- Select **[Help(pdf)]** to open OK100 User Manual.
- Select **[About]** to read the information about OK100.
- Select **[Problem Feedback]** to give us your Problem Feedback about OK100. We appreciate all your feedback.
- Select **[Exit]** to close the OK100.

4.2 OK100 Setting Dialog



4.2.1 Security Status

a. On For Active Window

This status will be ticked when OK100 is connecting to application software; your typing data are protected. The system tray icon will show:  (Connected)

b. On For Laptop PC Embedded Keyboard

This status will be ticked if you have installed the **Driver** for your laptop PC embedded keyboard.

c. Off For Asian Windows Input Method Editor

This status will be ticked when your IME is in Asian Windows IME mode, OK100 software security status will automatic turn off to prevent conflict.

4.2.2 Enable Options

a. Security Mode

When this option is ticked, OK100 software will be enabled.

b. Security Mode On/Off by Win+Ctrl Keys

When this option is ticked, OK100 security mode can be turned on/off by using the Win+Ctrl keys.

c. Keylogger Bar Off After 5 Seconds Without Keying

When this option is ticked, OK100 Keylogger Bar will turn off after 5 seconds without keying.

*Win+Ctrl keys are the hot key for turn on/off the Keylogger Bar.

d. Keylogger Bar On Active Window Title

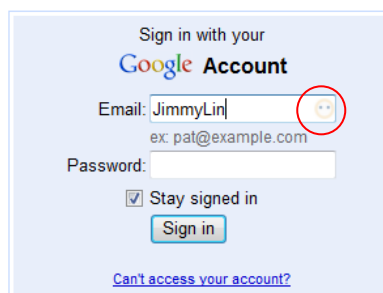
When this option is ticked, OK100 Keylogger Bar will always on the top of the active window.

e. Auto Run After Reboot

When this option is ticked, OK100 software will always auto-run after system reboot.

f. Vision Signal In Text Window When Active

When this option is ticked, OK100 icon will be showed on the right-top corner or right side of a text bar when the OK100 is connected to target application software.



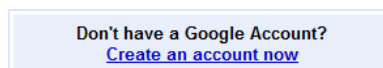
Sign in with your
Google Account

Email: JimmyLin 
ex: pat@example.com

Password:

Stay signed in

[Can't access your account?](#)

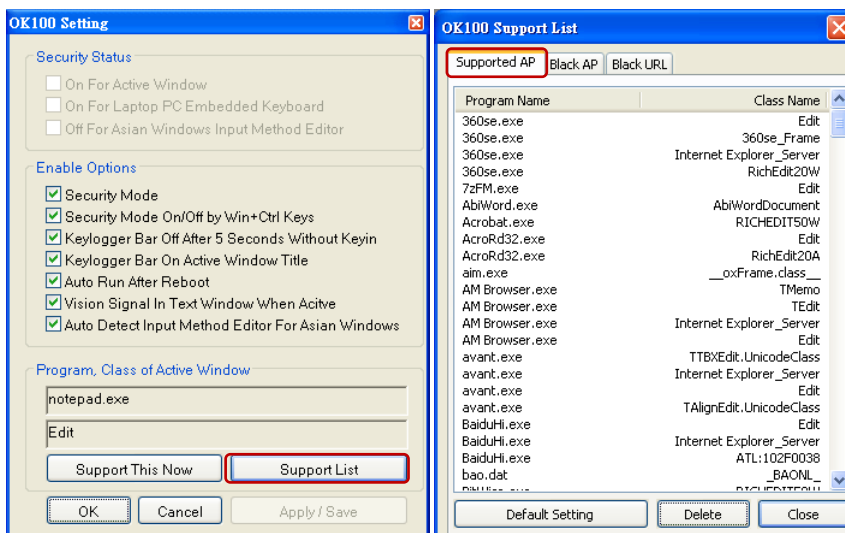


Don't have a Google Account?
[Create an account now](#)

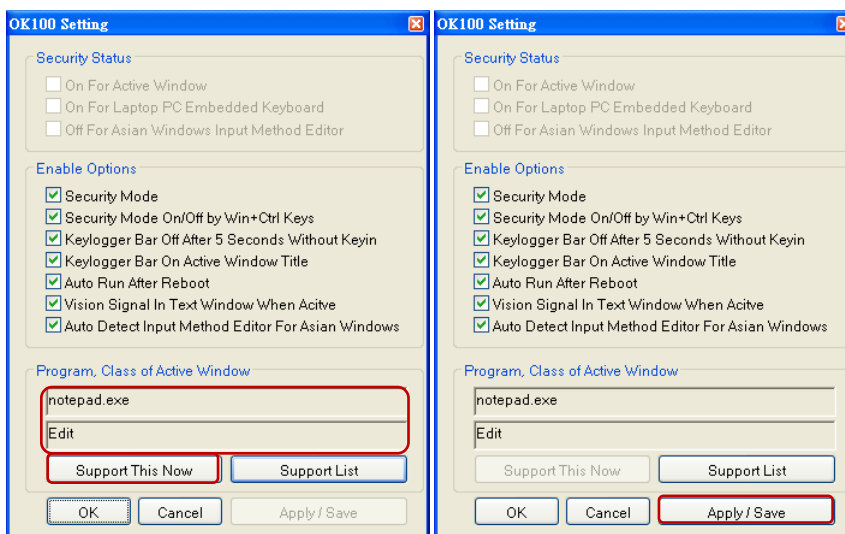
4.2.3 Support List

User can support her/his own software which is not listed in OK100 support list by the following procedure:

1. Open the OK100 Setting Dialog by select the **[Setting]** in OK100 menu.
2. Click the **[Support List]** button and select the **[Supported AP]** section.

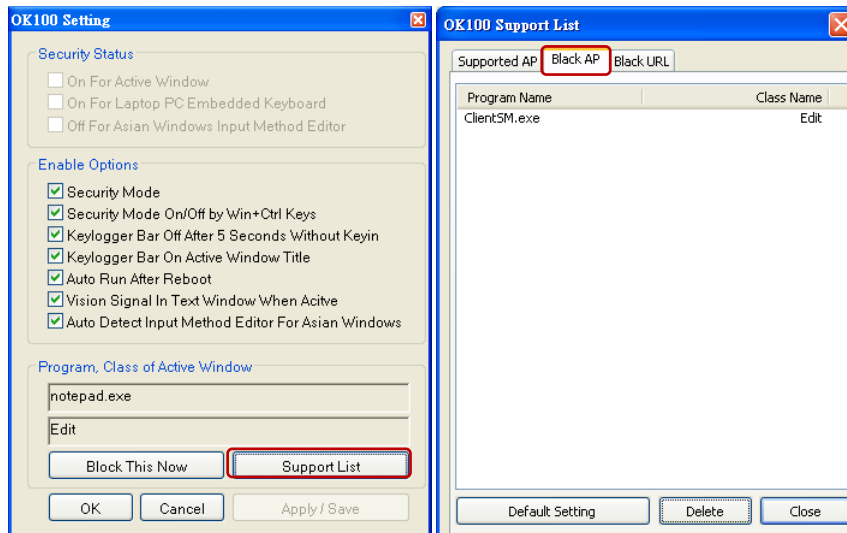


3. Click to a software you want to support. The program and class name of the active window will be showed in the OK100 setting dialog (Example: notepad.exe)
4. Click the **[Support This Now]** button.
5. Click the **[Apply/Save]** button.
6. After that, the software's program and class name will add into OK100 support list, user's typing data in the supported software's program and class will be protected by OK100.

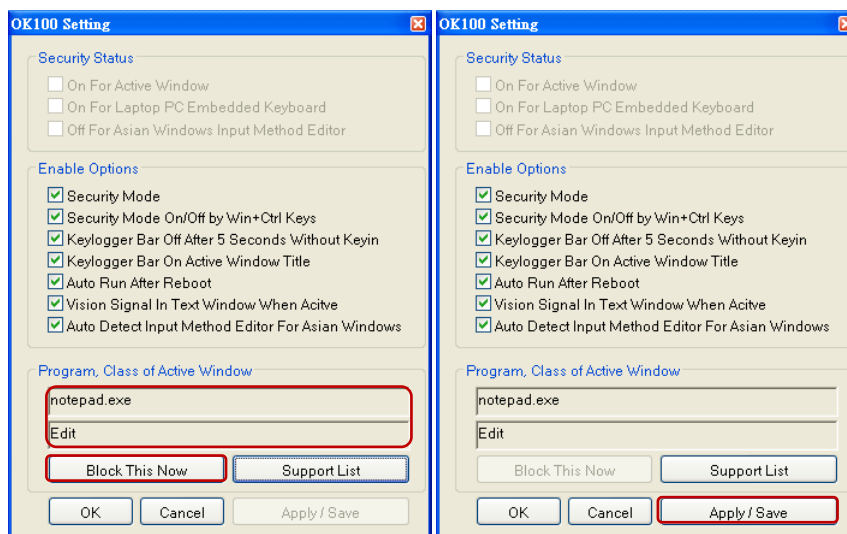


Moreover, user can set a software to the OK100 Black AP list if the software is not compatible with OK100 by the following procedure:

1. Open the OK100 Setting Dialog by select the **[Setting]** in OK100 menu.
2. Click the **[Support List]** button and select the **[Black AP]** section.

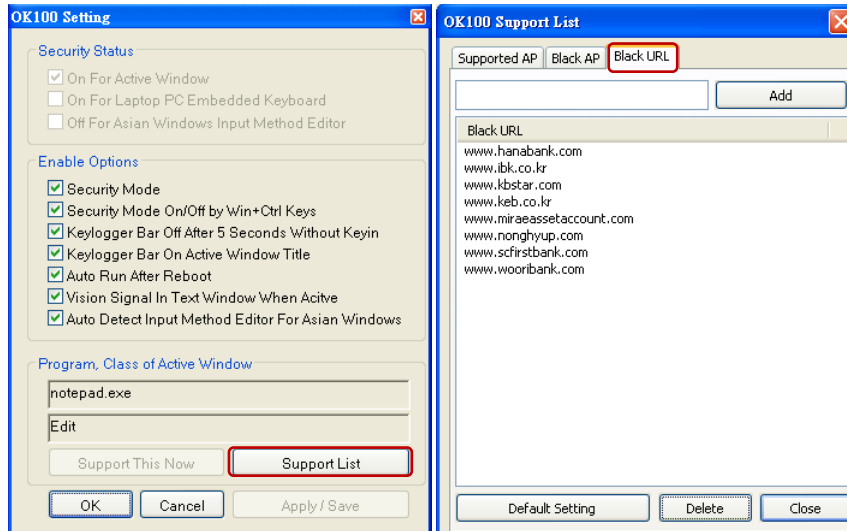


3. Click to a software you want to set to the Black AP list. The program and class name of the active window will be showed in the OK100 setting dialog (Example: notepad.exe)
4. Click the **[Block This Now]** button.
5. Click the **[Apply/Save]** button.
6. After that, the software's program and class name will add into OK100 Black AP list, the software in the Black AP list will not protected by OK100 and cannot add into the Support list in order to prevent conflict.

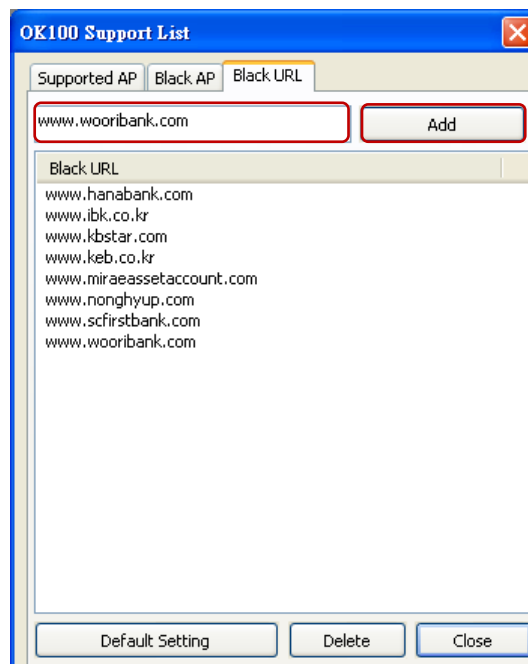


User also can set a specific website to the OK100 Black list by the following procedure:

1. Open the OK100 Setting Dialog by select the **[Setting]** in OK100 menu.
2. Click the **[Support List]** button and select the **[Black URL]** section.



3. Input a specific URL to the input bar and click the **[Add]** button.
4. After that, the specific URL will add into OK100 Black URL list, OK100 security status will automatic turn off when user enters the website by Internet Explorer.
5. Note: The Black URL function only works for Internet Explorer.



5. Notation

5.1 OK100 Encrypted Key

OK100 Cloud Keyboard Security only encrypts the character keys, number keys and symbol keys in keyboard. We do not encrypt the function keys.

a. OK100 Encrypted Keys:

aAbBcCdDeEfFgGhHijJkKlLmMnNoOpPqQrRsStTuUvVwWxXyYzZ0)1!2@3#4\$5%6^7&8*9(=+-_\\|[{]};:','<.>/?


b. OK100 Non-Encrypted Keys:

“Space bar”, “Enter” and “~” do not encrypted by OK100 for software compatibility purpose. “.” key in numeric keypad also do not encrypt by OK100 due to limitation of firmware.

c. Special case in the numeric keypad:

When user is using the euro keyboard (Germany, Sweden, Italy) input method editor, the “-”, “.” and “/” keys in the numeric keypad do not encrypted by OK100 due to limitation of firmware.

5.2 Limitation

Due to the limitation of software, when user is switching his/her active window, we recommend user to wait for OK100 connected  to the new active window before start typing to prevent miss-type or incorrect-type.

5.3 Uninstallation

The uninstallation will removed all the OK100 Cloud Keyboard Security files, if OK100 is currently running, please close it before proceeding with the uninstallation.



After uninstallation, some OK100 files will be removed after next reboot, please click Finish to exit or click Reboot to restart your PC.

