

[www.fishman.com](http://www.fishman.com)

***FISHMAN***

**USER GUIDE**  
**ELLIPSE AURA™** (for aftermarket installed systems)

# Read Me First!!

To experience the benefits of Aura, you must first upload Images into the preamp.

- Install the Aura Gallery 2.0 CD on your PC.
- Connect the Aura product to the computer with the supplied USB cable and follow the onscreen instructions to upload Images.

***FISHMAN***

# Image Chart

---

Once you upload Images into your Ellipse Aura, fill in this chart for quick reference.

| Image # | Instrument Name | Microphone | Mic Distance |
|---------|-----------------|------------|--------------|
| 1       |                 |            |              |
| 2       |                 |            |              |
| 3       |                 |            |              |
| 4       |                 |            |              |

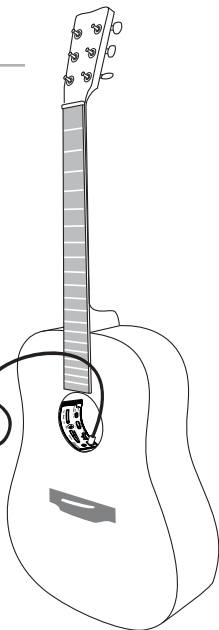
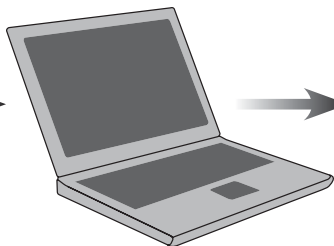
## READ ME!

This product is meant to be installed only by a qualified professional guitar technician. Instructions for professional installers are available at **Service & Support** at [www.fishman.com](http://www.fishman.com).

# Fundamentals

---

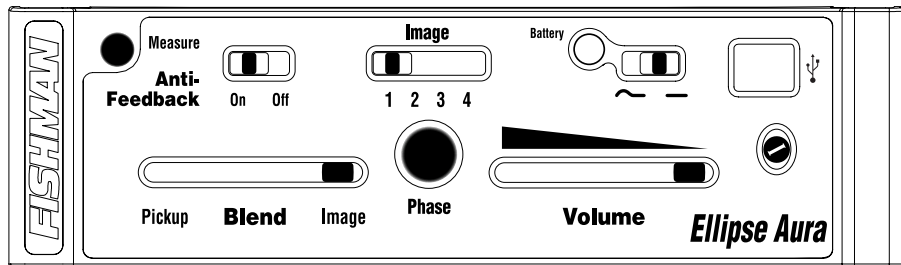
To experience the benefits of Aura, install the Aura Gallery CD on your computer then upload Images into the Ellipse Aura preamp.



# Quick Start

---

After you upload Images into the preamp, set the controls as illustrated:



- 1. Plug In** • Connect the Ellipse Aura to your amplifier or PA with a ¼-inch instrument cable.
- 2. Select an Image** • Raise the Volume and use the Image switch to browse through the four Images until you find one you prefer.
- 3. Blend in the pickup** • Move the Blend slider to the left to mix in some pickup signal with the Image.
- 4. Phase** • Push the Phase switch in and out until you find the position that sounds most pleasing. If feedback occurs, change the position of the switch.
- 5. Anti-Feedback** • Start with the Volume off. Move the Anti-Feedback switch to the On position (left). Push and hold the measure button for several seconds. Raise the volume until feedback begins. The filter will latch onto the feedback and eliminate it after a few seconds.

# Power

---

Plug in the guitar, and the Ellipse Aura switches on. To conserve battery life, remove the instrument cable from the guitar when the system is not used.

When you plug in, the Battery LED flashes once to indicate power up.

# Battery Replacement

---

When the Battery LED lights steadily, it is time to change the battery. To replace the battery, remove the fabric bag inside the guitar. We recommend a lithium type for extended battery life. You can expect up to 66 hours from a lithium battery and 33 hours from an alkaline battery.

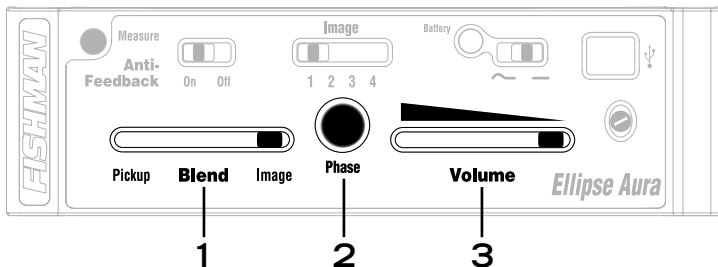
If you ship your guitar, we recommend you remove the battery as a precaution. Although unlikely, it is possible for the battery to jar loose inside the instrument during shipment.



# Controls

---

The controls are arranged in two distinct levels. Once your fingers are familiar with the layout, you will be able to easily adjust the controls, even when you can't see them.



## **1. Blend**

Use the Blend slider to adjust the balance between the pickup and the Image. You'll attain a more microphone-like sound by favoring the Image. Note that it is often practical to blend in a higher percentage of the pickup in live situations, especially when you desire a more focused amplified tone.

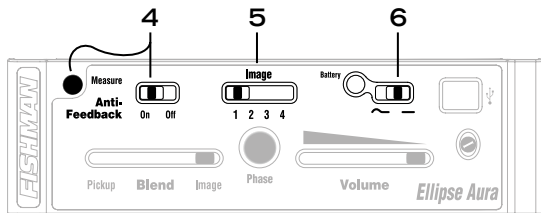
## **2. Phase**

Use the Phase switch to improve bass response at low volume and suppress feedback at high volume. Push the Phase switch in and out and leave it in the position most pleasing to your ear. If feedback occurs, push the switch again.

## **3. Volume**

For the cleanest noise-free sound, set the volume as high as possible without causing your amp or mixer to distort.

## Controls (continued)



### 4. Anti-Feedback

The Ellipse Aura is equipped with an automatic search-and-destroy notch filter. To engage the feature, turn the Volume down and move the Anti-Feedback switch left (On position). Hold the Measure button for a few seconds. The Battery LED will begin to flash. Turn up the Volume, then either dampen the strings while tapping the body or play the troublesome note until feedback begins. The filter will latch onto the feedback, eliminate it after a few seconds and hold the setting in memory until you push the Measure button again.

If you plan to record with the Ellipse Aura, we recommend you turn off the Anti-Feedback to fill out the natural low-end response of the guitar.

## 5. Image Switch

Select one of the four Images you've uploaded from the Aura Gallery (see page 3). Note that to experience the benefits of Aura, you must first upload Images into the preamp.

## 6. Voicing Switch

This switch selects how the pickup is voiced. Move the Voicing Switch to the left for bass boost and to the right for a flat response. Choose the setting that works for your instrument and your performance requirements. Here are some guidelines.

- The boosted bass voicing (switch to left) compliments solo guitarists and singers who accompany themselves, especially with smaller instruments.
- The flat voicing (switch to right) cuts through the mix if you play in a band. It does a good job controlling boominess and low frequency feedback onstage, especially with full-size guitars.

# Performance Tips

---

Some suggestions for setting up your Ellipse Aura.

## Recording

You will benefit from complete isolation for your guitar with no microphone bleed, so when you record live, no other sounds can leak into your guitar track. The best recordings we've heard with Ellipse Aura have some pickup mixed in for better definition.

- Turn Anti-Feedback off, unless you happen to be recording onstage.
- Start with the Voicing switch to the right (flat).
- Move the Blend slider to 75–100% Image.

## Solo Performance

As a solo performer, it's important for you to hear deep, full-range sound, because it's just you and your guitar. The bass boost setting on the Voicing switch offers that extra depth you desire, while Ellipse Aura preserves the intimacy and nuance of your performance.

- Set the Phase switch for best bass response.
- Anti-Feedback optional.
- Voicing switch to the left (bass boost).
- Blend slider 50–75% Image.

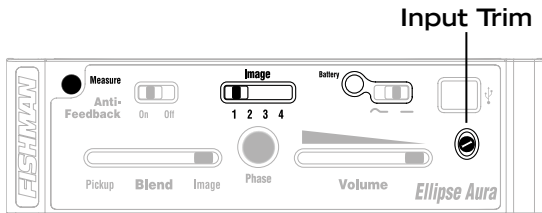
### **High Volume (bands, loud stage sound)**

When you play with a band, your goal is to fit into the mix and cut through without feedback when it's time to cut loose. Even when used sparingly, Images add undeniable realism to your amplified acoustic tone.

- Set Phase switch for best resistance to feedback.
- Anti-Feedback on.
- Voicing switch to the right (flat).
- Blend slider 50–75% Pickup.

# Input Trim

---



Adjust this set-and-forget control so you can play strongly without distortion and play quietly without hiss.

To set the Input Trim:

1. Move the Image switch left to #1.
2. Hold down the Measure switch as you plug in the guitar.
3. Use a miniature jeweler's screwdriver to gently raise or lower the Input Trim so the LED flashes occasionally with hard playing.
4. To exit the setup, unplug the guitar.

# Electrical Specifications

---

|                                           |                          |
|-------------------------------------------|--------------------------|
| Power consumption:                        | 15mA                     |
| Typical 9V lithium battery life:          | 66 hours                 |
| Typical 9V alkaline battery life:         | 33 hours                 |
| Maximum output level (onset of clipping): | +1dBV                    |
| Nominal output impedance:                 | 1k Ohm                   |
| Input trim gain range:                    | -6dB to +6dB             |
| Peak meter response:                      | 3dB before clipping      |
| Voicing switch, bass boost:               | +3dB @ 90Hz              |
| Dynamic range:                            | 93dB                     |
| Baseline noise:                           | -92dBV                   |
| Anti-feedback cut depth:                  | 13.5dB                   |
| Anti-feedback bandwidth:                  | 0.25 octave              |
| Phase switch, out position:               | (+) non-inverting output |

The specifications in this manual are subject to change without notice.



***FISHMAN***

[www.fishman.com](http://www.fishman.com)