



SPLIT-TYPE, COOLING AIR CONDITIONERS

1999

No. OC208

TECHNICAL & SERVICE MANUAL

Series PC Ceiling Suspended

Indoor unit
[Model name]

PC-3GJA

[Service Ref.]

PC-3GJA₂

This service manual describes only the change points. Please refer to OC134 REVISED EDITION-A as to excluding this manual.

This manual does not cover the following outdoor units. When serving them, please refer to the service manual No.OC127 REVISED EDITION-A, OC187 and this manual in a set.

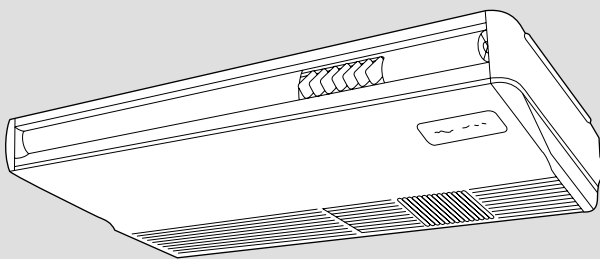
[Service Ref.]

PU-3YJC (OC187)

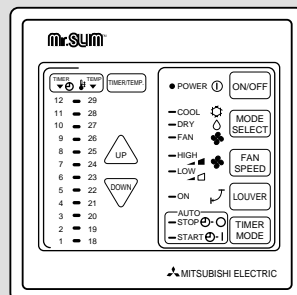
PU-3VJC (OC187)

PU-3NJA₁

(OC127 REVISED EDITION-A)



INDOOR UNIT



REMOTE CONTROLLER

CONTENTS

| | |
|-------------------------------------|---|
| 1. TECHNICAL CHANGE | 2 |
| 2. SPECIFICATIONS..... | 3 |
| 3. DATA | 5 |
| 4. REFRIGERANT SYSTEM DIAGRAM | 7 |
| 5. PARTS LIST..... | 8 |

Mr.SLIM™

Differences between the connection with PC-3GJA₁

| CHANGE POINTS | PC-3GJA₁ | PC-3GJA₂ |
|-------------------------------|----------------------------|--|
| OUTDOOR UNIT | PU-3VJA ₂ | PU-3VJC PU-3VJB |
| | PU-3YJA ₃ | PU-3YJC PU-3YJB |
| COOLING CAPACITY (50Hz) | 24600 Btu/h 7200W | 25900 Btu/h (PU-3JC) 7600W 25600 Btu/h (PU-3JB) 7500W |
| TOTAL INPUT (50Hz) | 3.30 | 2.77 (PU-3JB) |

2

SPECIFICATIONS

1. STANDARD SPECIFICATIONS

| Item | | Service Ref. | PC-3GJA ₂ | |
|---------------------------|--------------------------------|--------------|--|-------------------------------------|
| Cooling capacity *1 | 50Hz | W | 7,600 | 7,500 |
| | | Btu/h | 25,900 | 25,600 |
| | 60Hz | W | 7,800 | |
| | | Btu/h | 26,600 | |
| Cooling capacity (SSA) *4 | 60Hz | W | 6,500 | |
| | | Btu/h | 22,200 | |
| Total input *2 | 50Hz | kW | 3.30 | 2.77 |
| | 60Hz | | 3.60/4.25 *1/*4 | |
| Indoor unit | Service Ref. | | PC-3GJA₂ | |
| | External finish | | Munsell 0.7Y 8.59/0.97 | |
| | Fan motor output | | kW | 0.07 |
| | Airflow Hi-Lo | 50Hz | m ³ / min | 18-14 |
| | | | CFM | 635-494 |
| | | 60Hz | m ³ / min | 18-14 |
| | | | CFM | 635-494 |
| | External static pressure | | Pa(mmAq) | 0 (Direct blow) |
| | Operation control & Thermostat | | Remote control & Built-in | |
| | Noise level high-low | 50Hz | dB | 43-37 |
| | | 60Hz | dB | 43-37 |
| | Unit drain pipe I.D. | | mm(in.) | 26 (1) |
| | Dimensions | H | mm(in.) | 210(8-1/4) |
| | | W | mm(in.) | 1310(51-9/16) |
| D | | mm(in.) | 680(26-3/4) | |
| Weight | | kg(lbs) | 34(75) | |
| Outdoor unit | Service Ref. | | PU-3VJC, PU-3YJC, PU-3NJA₁ | PU-3VJB, PU-3YJB |
| | External finish | | Munsell 5Y 7/1 | |
| | Refrigerant (R-22) control | | Capillary tube | |
| | Crankcase heater *3 | 50/60Hz | W | 32/38 |
| | Compressor output | 50/60Hz | kW | (V) 2.2, (Y) 2.4 / (N) 2.2 2.2 |
| | Protection devices | | *5 | |
| | Fan motor output | | kW | 0.085 |
| | Airflow | 50Hz | m ³ / min(CFM) | 50(1765) |
| | | 60Hz | m ³ / min(CFM) | 50(1765) |
| | Noise level | 50/60Hz | dB | 52/53 |
| | Dimensions | W | mm(in.) | 870(34-1/4) |
| | | D | mm(in.) | 295+24(11-5/8 add 1) |
| | | H | mm(in.) | 850(33-7/16) |
| | Weight | | kg(lbs) | 73(161) |

Notes :

*1 Rating conditions (JIS B8616, GB/T 7725-96)
 Indoor : D.B. 27°C, W.B. 19°C
 Outdoor : D.B. 35°C, W.B. 24°C
 Refrigerant piping length (one way) : 5m (16ft)

*2 Total input based on indicated voltage

| MODEL | PC-3GJA ₂ |
|-------|-----------------------------|
| 50Hz | 1ph 220V/1ph 220V, 3ph 380V |
| 60Hz | 1ph 220V/1ph 220V |

*3 The capacity of crankcase heater (W) based on 220V

*4 Rating conditions (SSA385, 386)
 Indoor : D.B. 29°C, W.B. 19°C
 Outdoor : D.B. 46°C, W.B. 24°C
 Refrigerant piping length (one way) : 5m (16ft)

*5 V, N : Inner thermostat, HP switch, LP switch.
 Y : Thermal switch, HP switch, LP switch,
 Reversed-phase protector,
 Thermal relay

2. POWER SUPPLY & MODEL NAMES

| | | | |
|--------------|------|----------------------------|----------------------|
| Power supply | | Indoor unit Service Ref. | PC-3GJA ₂ |
| | | Outdoor unit Service Ref. | |
| 50Hz | 1ph. | 220, 230, 240V | PU-3VJC |
| | | 220V | PU-3VJB |
| | 3ph. | 380/220, 400/230, 415/240V | PU-3YJC |
| | | 380/220V | PU-3YJB |
| 60Hz | 1ph. | 220V | PU-3NJA ₁ |

Notes : 1. Power supply key N...1ph, 220V,60Hz
 V...1ph, 220, 230, 240V 50Hz
 Y...3ph. 380/220, 400/230, 415/240V, 50Hz, 4 wires

2. Primary power supplies for all indoor units are single-phase.

3. ELECTRICAL SPECIFICATIONS

(1). Rating conditions — JIS B 8616 { Indoor : D.B. 27°C (80°F), W.B. 19°C (66°F)
 Outdoor : D.B. 35°C (95°F), W.B. 24°C (75°F)

PC Series Indoor Unit (Single Phase)

| Power supply (1 Phase) | | V : 220V 50Hz | V : 230V 50Hz | V : 240V 50Hz | N : 220V 60Hz |
|------------------------|----|----------------------|----------------------|----------------------|----------------------|
| Service Ref. | | PC-3GJA ₂ | PC-3GJA ₂ | PC-3GJA ₂ | PC-3GJA ₂ |
| Current | A | 0.51 | 0.53 | 0.55 | 0.70 |
| Input | kW | 0.12 | 0.13 | 0.15 | 0.16 |
| Starting current | A | 1.17 | 1.22 | 1.27 | 1.11 |
| Outdoor unit | | PU-3 | PU-3 | PU-3 | PU-3 |

(2). Rating conditions — SSA 385, 386 { Indoor : D.B. 29°C (84°F), W.B. 19°C (66°F)
 Outdoor : D.B. 46°C (115°F), W.B. 24°C (75°F)

PC Series Indoor Unit (Single Phase)

| Power supply (1 Phase) | | N : 220V 60Hz |
|------------------------|----|----------------------|
| Service Ref. | | PC-3GJA ₂ |
| Current | A | 0.70 |
| Input | kW | 0.16 |
| Starting current | A | 1.11 |
| Outdoor unit | | PU-3 |

1. PERFORMANCE DATA

Cooling capacity **50Hz**

| Service Ref. | | | PC-3GJA ₂ | | | | | |
|--|--------|-------------|----------------------|-------------|------|-------------------|------|-------------|
| Temperature | | | PU-3VJC / PU-3YJC | | | PU-3VJB / PU-3YJB | | |
| Outdoor D.B. | | Indoor W.B. | T.C. | C.F. (T.I.) | T.C. | C.F. (T.I.) | T.C. | C.F. (T.I.) |
| 21°C (69.8°F) | 16°C | (60.8°F) | 7.6 | 0.81 | 7.5 | 0.81 | 7.5 | 0.81 |
| | 18°C | (64.4°F) | 8.1 | 0.82 | 8.0 | 0.82 | 8.0 | 0.82 |
| | 19°C | (66.2°F) | 8.4 | 0.83 | 8.3 | 0.83 | 8.3 | 0.83 |
| | 19.4°C | (67°F) | 8.5 | 0.83 | 8.4 | 0.83 | 8.4 | 0.83 |
| | 20°C | (68°F) | 8.6 | 0.84 | 8.5 | 0.84 | 8.5 | 0.84 |
| | 22°C | (71.6°F) | 9.1 | 0.86 | 9.0 | 0.86 | 9.0 | 0.86 |
| 25°C (77°F) | 16°C | (60.8°F) | 7.5 | 0.84 | 7.4 | 0.84 | 7.4 | 0.84 |
| | 18°C | (64.4°F) | 7.9 | 0.85 | 7.8 | 0.85 | 7.8 | 0.85 |
| | 19°C | (66.2°F) | 8.2 | 0.86 | 8.1 | 0.86 | 8.1 | 0.86 |
| | 19.4°C | (67°F) | 8.3 | 0.86 | 8.2 | 0.86 | 8.2 | 0.86 |
| | 20°C | (68°F) | 8.5 | 0.87 | 8.4 | 0.87 | 8.4 | 0.87 |
| | 22°C | (71.6°F) | 9.0 | 0.89 | 8.9 | 0.89 | 8.9 | 0.89 |
| 30°C (86°F) | 16°C | (60.8°F) | 7.2 | 0.90 | 7.1 | 0.90 | 7.1 | 0.90 |
| | 18°C | (64.4°F) | 7.7 | 0.92 | 7.6 | 0.92 | 7.6 | 0.92 |
| | 19°C | (66.2°F) | 7.9 | 0.93 | 7.8 | 0.93 | 7.8 | 0.93 |
| | 19.4°C | (67°F) | 8.0 | 0.93 | 7.9 | 0.93 | 7.9 | 0.93 |
| | 20°C | (68°F) | 8.2 | 0.94 | 8.1 | 0.94 | 8.1 | 0.94 |
| | 22°C | (71.6°F) | 8.7 | 0.96 | 8.6 | 0.96 | 8.6 | 0.96 |
| 32.2°C (90°F) | 16°C | (60.8°F) | 7.1 | 0.93 | 7.0 | 0.93 | 7.0 | 0.93 |
| | 18°C | (64.4°F) | 7.5 | 0.95 | 7.4 | 0.95 | 7.4 | 0.95 |
| | 19°C | (66.2°F) | 7.8 | 0.96 | 7.7 | 0.96 | 7.7 | 0.96 |
| | 19.4°C | (67°F) | 7.9 | 0.97 | 7.8 | 0.97 | 7.8 | 0.97 |
| | 20°C | (68°F) | 8.0 | 0.97 | 7.9 | 0.97 | 7.9 | 0.97 |
| | 22°C | (71.6°F) | 8.5 | 0.99 | 8.4 | 0.99 | 8.4 | 0.99 |
| 35°C (95°F) | 16°C | (60.8°F) | 6.9 | 0.96 | 6.8 | 0.96 | 6.8 | 0.96 |
| | 18°C | (64.4°F) | 7.4 | 0.99 | 7.3 | 0.99 | 7.3 | 0.99 |
| | 19°C | (66.2°F) | 7.6 | 1.00 | 7.5 | 1.00 | 7.5 | 1.00 |
| | 19.4°C | (67°F) | 7.7 | 1.00 | 7.6 | 1.00 | 7.6 | 1.00 |
| | 20°C | (68°F) | 7.8 | 1.01 | 7.7 | 1.01 | 7.7 | 1.01 |
| | 22°C | (71.6°F) | 8.4 | 1.04 | 8.3 | 1.04 | 8.3 | 1.04 |
| 40°C (104°F) | 16°C | (60.8°F) | 6.6 | 1.03 | 6.5 | 1.03 | 6.5 | 1.03 |
| | 18°C | (64.4°F) | 7.0 | 1.06 | 6.9 | 1.06 | 6.9 | 1.06 |
| | 19°C | (66.2°F) | 7.3 | 1.07 | 7.2 | 1.07 | 7.2 | 1.07 |
| | 19.4°C | (67°F) | 7.4 | 1.08 | 7.3 | 1.08 | 7.3 | 1.08 |
| | 20°C | (68°F) | 7.5 | 1.08 | 7.4 | 1.08 | 7.4 | 1.08 |
| | 22°C | (71.6°F) | 8.0 | 1.11 | 7.9 | 1.11 | 7.9 | 1.11 |
| 40.6°C (105°F) | 16°C | (60.8°F) | 6.5 | 1.04 | 6.5 | 1.04 | 6.5 | 1.04 |
| | 18°C | (64.4°F) | 7.0 | 1.06 | 6.9 | 1.06 | 6.9 | 1.06 |
| | 19°C | (66.2°F) | 7.2 | 1.08 | 7.1 | 1.08 | 7.1 | 1.08 |
| | 19.4°C | (67°F) | 7.3 | 1.08 | 7.2 | 1.08 | 7.2 | 1.08 |
| | 20°C | (68°F) | 7.5 | 1.09 | 7.4 | 1.09 | 7.4 | 1.09 |
| | 22°C | (71.6°F) | 8.0 | 1.12 | 7.9 | 1.12 | 7.9 | 1.12 |
| 45°C (113°F) | 16°C | (60.8°F) | 6.3 | 1.10 | 6.2 | 1.10 | 6.2 | 1.10 |
| | 18°C | (64.4°F) | 6.7 | 1.12 | 6.6 | 1.12 | 6.6 | 1.12 |
| | 19°C | (66.2°F) | 6.9 | 1.14 | 6.8 | 1.14 | 6.8 | 1.14 |
| | 19.4°C | (67°F) | 7.0 | 1.15 | 6.9 | 1.15 | 6.9 | 1.15 |
| | 20°C | (68°F) | 7.2 | 1.16 | 7.1 | 1.16 | 7.1 | 1.16 |
| | 22°C | (71.6°F) | 7.7 | 1.20 | 7.6 | 1.20 | 7.6 | 1.20 |
| 46°C (115°F) | 16°C | (60.8°F) | 6.2 | 1.11 | 6.1 | 1.11 | 6.1 | 1.11 |
| | 18°C | (64.4°F) | 6.6 | 1.14 | 6.5 | 1.14 | 6.5 | 1.14 |
| | 19°C | (66.2°F) | 6.9 | 1.15 | 6.8 | 1.15 | 6.8 | 1.15 |
| | 19.4°C | (67°F) | 7.0 | 1.16 | 6.9 | 1.16 | 6.9 | 1.16 |
| | 20°C | (68°F) | 7.1 | 1.17 | 7.0 | 1.17 | 7.0 | 1.17 |
| | 22°C | (71.6°F) | 7.6 | 1.21 | 7.5 | 1.21 | 7.5 | 1.21 |
| 50°F (122°F) | 16°C | (60.8°F) | 5.9 | 1.16 | | | | |
| | 18°C | (64.4°F) | 6.4 | 1.19 | | | | |
| | 19°C | (66.2°F) | 6.6 | 1.21 | | | | |
| | 19.4°C | (67°F) | 6.7 | 1.22 | | | | |
| | 20°C | (68°F) | 6.8 | 1.23 | | | | |
| | 22°C | (71.6°F) | 7.3 | 1.28 | | | | |
| 52°C (125.5°F) | 16°C | (60.8°F) | 5.8 | 1.19 | | | | |
| | 18°C | (64.4°F) | 6.2 | 1.22 | | | | |
| | 19°C | (66.2°F) | 6.4 | 1.24 | | | | |
| | 19.4°C | (67°F) | 6.5 | 1.25 | | | | |
| | 20°C | (68°F) | 6.7 | 1.26 | | | | |
| | 22°C | (71.6°F) | 7.2 | 1.31 | | | | |
| Evaporator airflow (m ³ /min) | | | 18 | | | 18 | | |
| Bypass factors | | | 0.08 | | | 0.08 | | |
| S.H.F. at rating conditions | | | 0.73 | | | 0.73 | | |

- Notes : 1. T.C. : Total capacity (× 10³ W) ... (Btu / h) ÷ (W) × 3.4, (kcal / h) = (W) × 0.86
 C.F. (T.I.) : Correction factors of Total input (Indoor unit input + Outdoor unit input)
 2. (°F) = 32 + 9 / 5 (°C)
 3. Guaranteed operating range (cooling) { Lower limitIndoor : D.B. 21°C (70°F), W.B. 15.5°C (60°F), Outdoor : D.B. 21°C (70°F)
 Upper limitIndoor : D.B. 35°C (95°F), W.B. 22.5°C (72.5°F), Outdoor : D.B. 52°C (125.5°F) PU-JC
 : D.B. 46°C (115°F) PU-JB

Cooling Capacity Correction Factors **50Hz**

| Service Ref. | Refrigerant piping length (one way) | | | | | | | | | |
|----------------------|-------------------------------------|------------|------------|------------|------------|------------|-------------|-------------|-------------|-------------|
| | 5m (16ft) | 10m (33ft) | 15m (49ft) | 20m (66ft) | 25m (82ft) | 30m (98ft) | 35m (115ft) | 40m (131ft) | 45m (148ft) | 50m (164ft) |
| PC-3GJA ₂ | 1.0 | 0.978 | 0.962 | 0.948 | 0.934 | 0.921 | — | — | — | — |



2. STANDARD OPERATION DATA

| Service Ref. | | | PC-3GJA ₂ | |
|---------------------|---------------------------|-------------------------------|----------------------|----------------|
| MODE | | | Cooling | |
| Total | Capacity | W | 7,600 | 7,500 |
| | Input | kW | 3.30 | 2.77 |
| Electrical circuit | Indoor unit service Ref. | | PC-3GJA ₂ | |
| | Phase, Hz | | 1, 50 | 1, 50 |
| | Volts | | 220 | 220 |
| | Amperes | | 0.51 | 0.51 |
| | Outdoor unit service Ref. | | PU-3VJC | PU-3VJB |
| | Phase, Hz | | 1, 50 | 1, 50 |
| | Volts | | 220 | 220 |
| | Amperes | | 15.1 | 12.4 |
| Refrigerant circuit | Discharge pressure | MPa (kgf/cm ²) | 1.96 (20.0) | 1.91 (19.5) |
| | Suction pressure | MPa (kgf/cm ²) | 0.44 (4.5) | 0.46 (4.69) |
| | Discharge temperature | °C | 87.9 | 84 |
| | Condensing temperature | °C | 52.3 | 50.7 |
| | Suction temperature | °C | 3.7 | 3.8 |
| | Ref. pipe length | m | 5 | 5 |
| Indoor side | Intake air temperature | D.B. °C | 27 | 27 |
| | | W.B. °C | 19 | 19 |
| | Discharge air temperature | D.B. °C | 12.2 | 12.3 |
| Outdoor side | Intake air temperature | D.B. °C | 35 | 35 |
| | | W.B. °C | 24 | 24 |

The unit of pressure has been changed to MPa based on SI(International System of unit) in accordance with I.S.O.(International Organization for Standardization).

The conversion factor is : 1(MPa)=10.2(kgf / cm²)

3. OUTLET AIR SPEED AND COVERAGE RANGE

| Frequency | Configuration | | Ceiling suspended |
|-----------|----------------|---------------------|----------------------|
| | Service Ref. | | PC-3GJA ₂ |
| 50Hz | Airflow | m ³ /min | 18 |
| | Air speed | m/sec. | 3.8 |
| | Coverage range | m | 10.4 |
| | | ft | 34.5 |
| 60Hz | Airflow | m ³ /min | 18 |
| | Air speed | m/sec. | 3.8 |
| | Coverage range | m | 10.4 |
| | | ft | 34.5 |

The air coverage range is the value up to the position where the air speed is 0.25 m/sec. when air is blown out horizontally from the unit at Hi notch position.

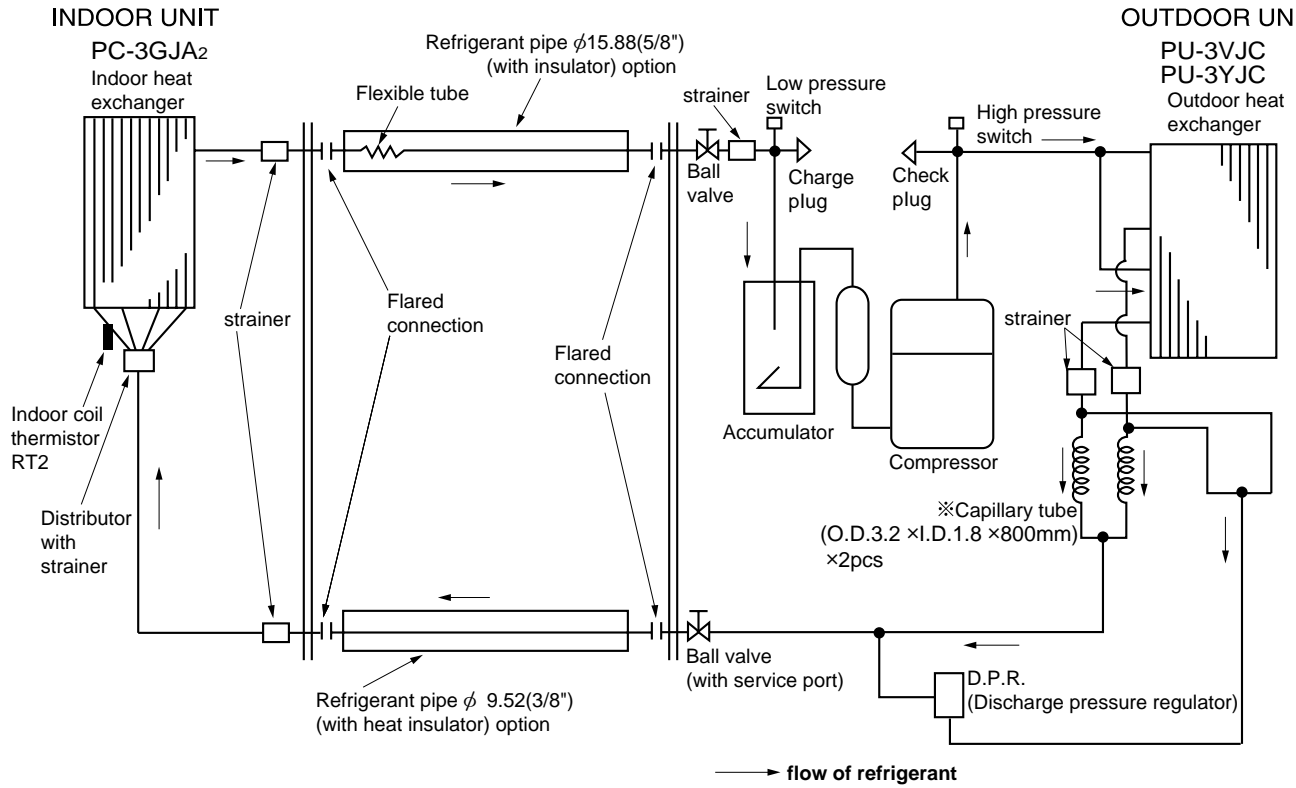
The coverage range should be used as a general guideline since it varies according to the size of the room and furniture inside the room.

4

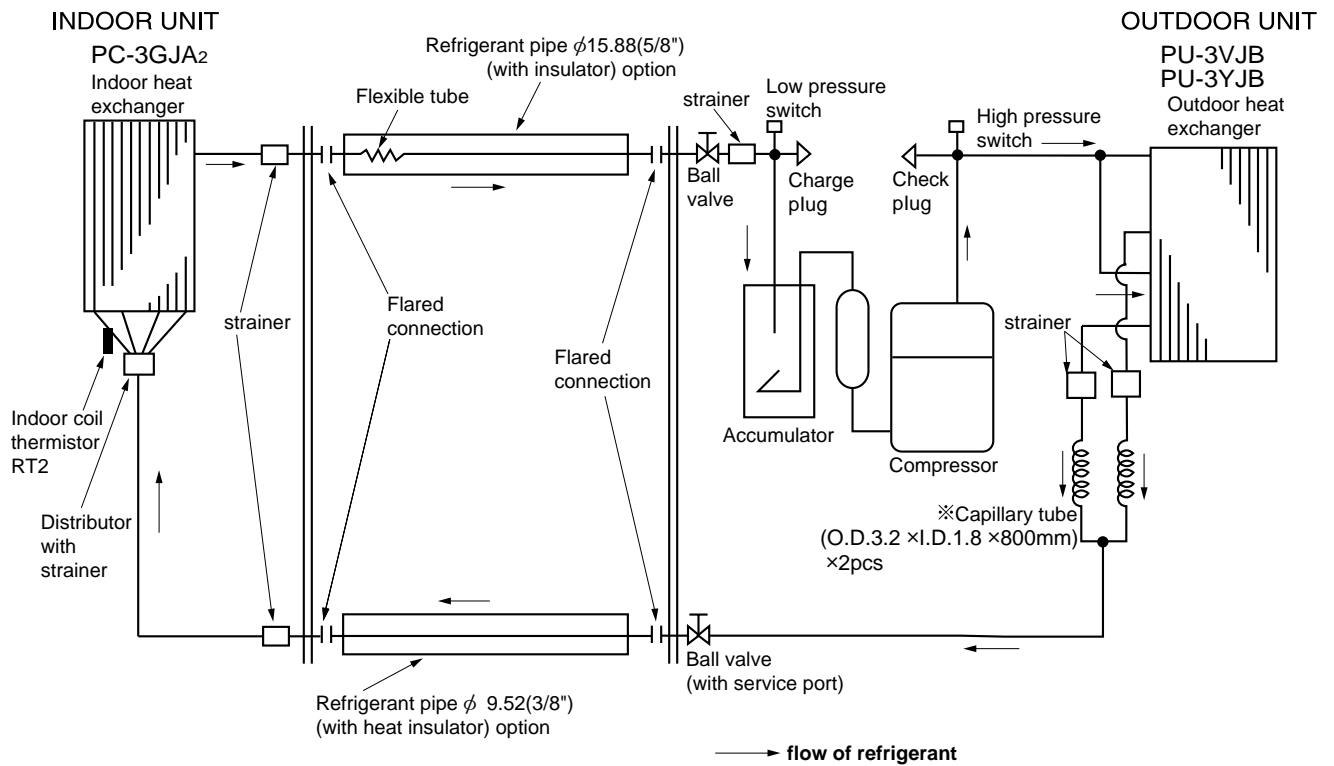
REFRIGERANT SYSTEM DIAGRAM

PC-3GJA₂ / PU-3VJC, PU-3YJC

UNIT : mm(inch)



PC-3GJA₂ / PU-3VJB, PU-3YJB



5

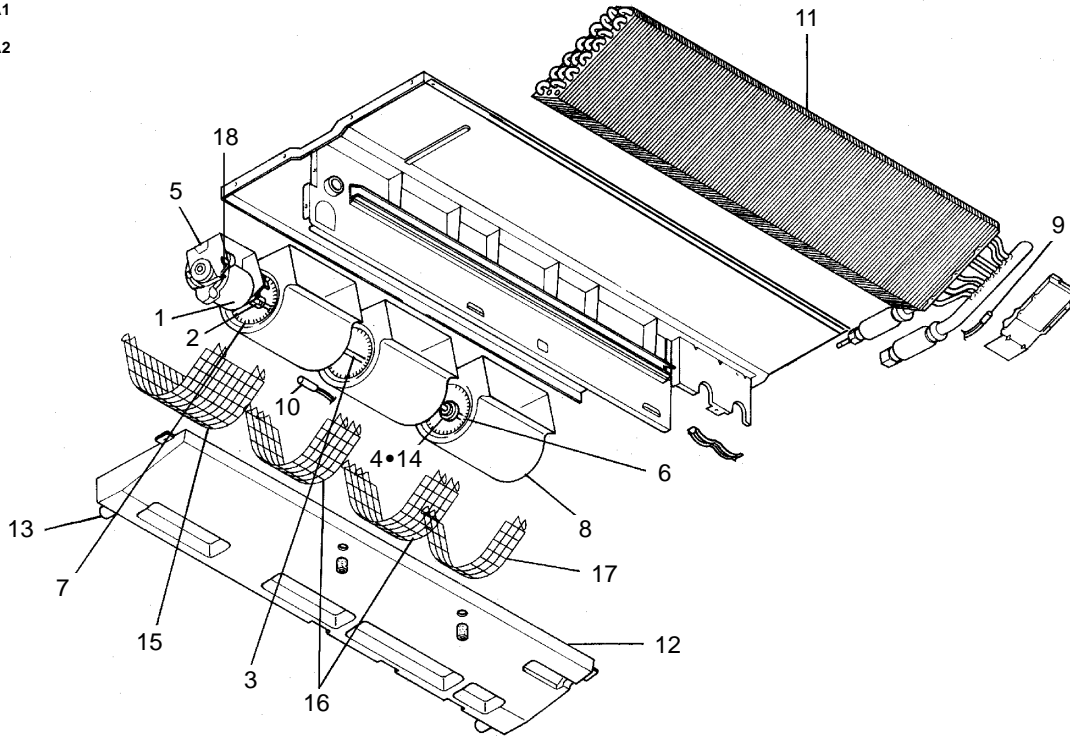
PARTS LIST

FAN PARTS

PC-3GJA

PC-3GJA₁

PC-3GJA₂



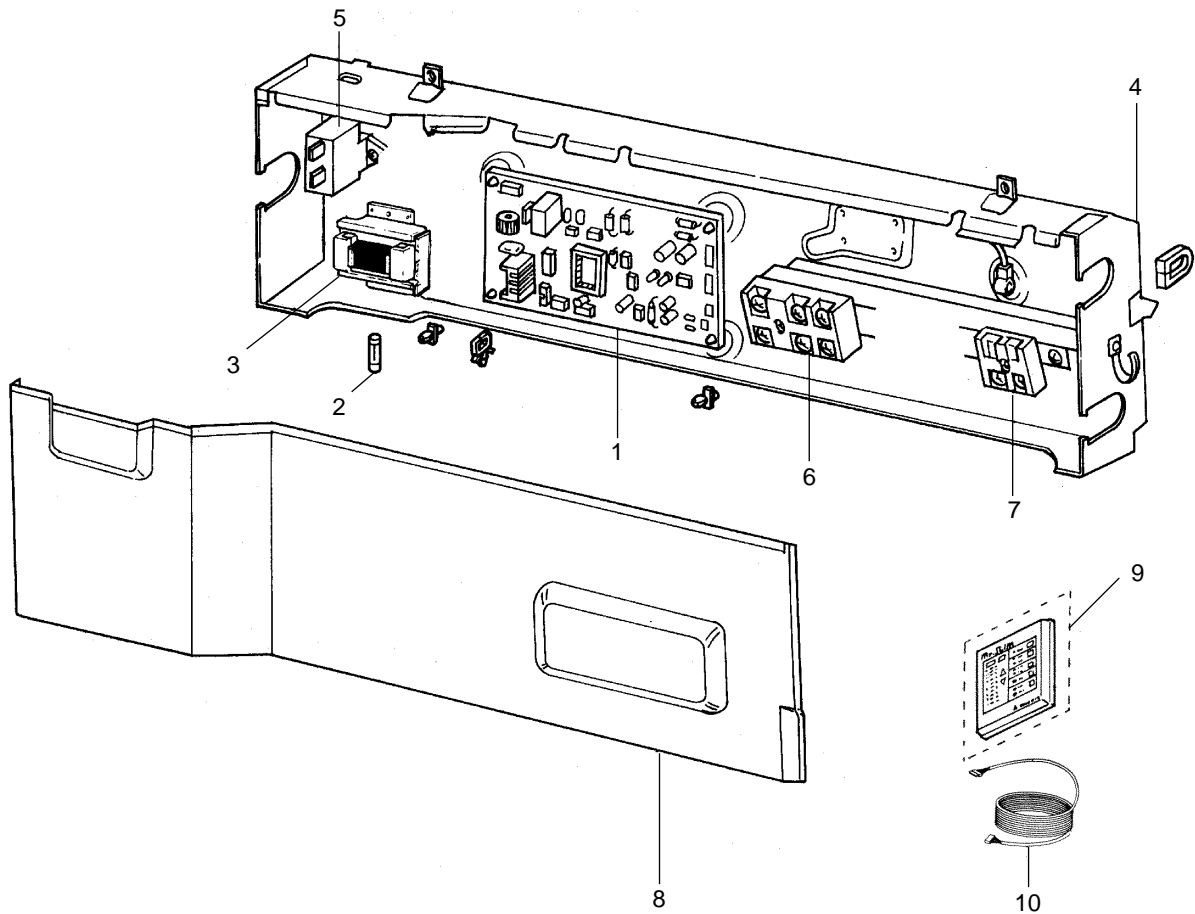
| No. | Part No. | Part Name | Specification | Q'ty / set | | Remarks (Drawing No.) | Wiring Diagram Symbol | Recom- mended Q'ty | Price | |
|-----|-------------|-----------------------------|---------------|--|--|--------------------------|-----------------------------|--------------------------|-------|--------|
| | | | | PC-3 | | | | | Unit | Amount |
| | | | | GJA, GJA ₁ , GJA ₂ | | | | | | |
| 1 | T7W 30J 762 | FAN MOTOR | DC9C4P70MS | 1 | | | | MF | | |
| 2 | R01 29J 116 | FAN JOINT | | 1 | | | | | | |
| 3 | R01 29J 100 | SHAFT (FAN) | | 1 | | | | | | |
| 4 | R01 705 103 | SLEEVE BEARING | | 1 | | | | | | |
| 5 | R01 29J 130 | MOTOR LEG | | 1 | | | | | | |
| 6 | R01 29J 114 | SIROCCO FAN | | 2 | | | | | | |
| 7 | R01 33J 114 | SIROCCO FAN | | 1 | | | | | | |
| 8 | R01 17J 110 | CASING | | 3 | | | | | | |
| 9 | R01 17J 202 | INDOOR COIL THERMISTOR | | 1 | | | | RT2 | | |
| 10 | R01 18J 202 | ROOM TEMPERATURE THERMISTOR | | 1 | | | | RT1 | | |
| 11 | T7W 33J 480 | HEAT EXCHANGER | | 1 | | | | | | |
| 12 | R01 29J 529 | DRAIN PAN ASSY | | 1 | | | | | | |
| 13 | R01 17J 524 | DRAIN PLUG | | 1 | | | | | | |
| 14 | R01 29J 145 | BEARING SUPPORT | | 1 | | | | | | |
| 15 | T7W 20J 675 | FAN GUARD | | 1 | | | | | | |
| 16 | T7W 21J 675 | FAN GUARD | | 2 | | | | | | |
| 17 | T7W 18J 675 | FAN GUARD | | 1 | | | | | | |
| 18 | R01 43E 126 | PIECE (MOTOR) | | 1 | | | | | | |

ELECTRICAL PARTS

PC-3GJA

PC-3GJA₁

PC-3GJA₂



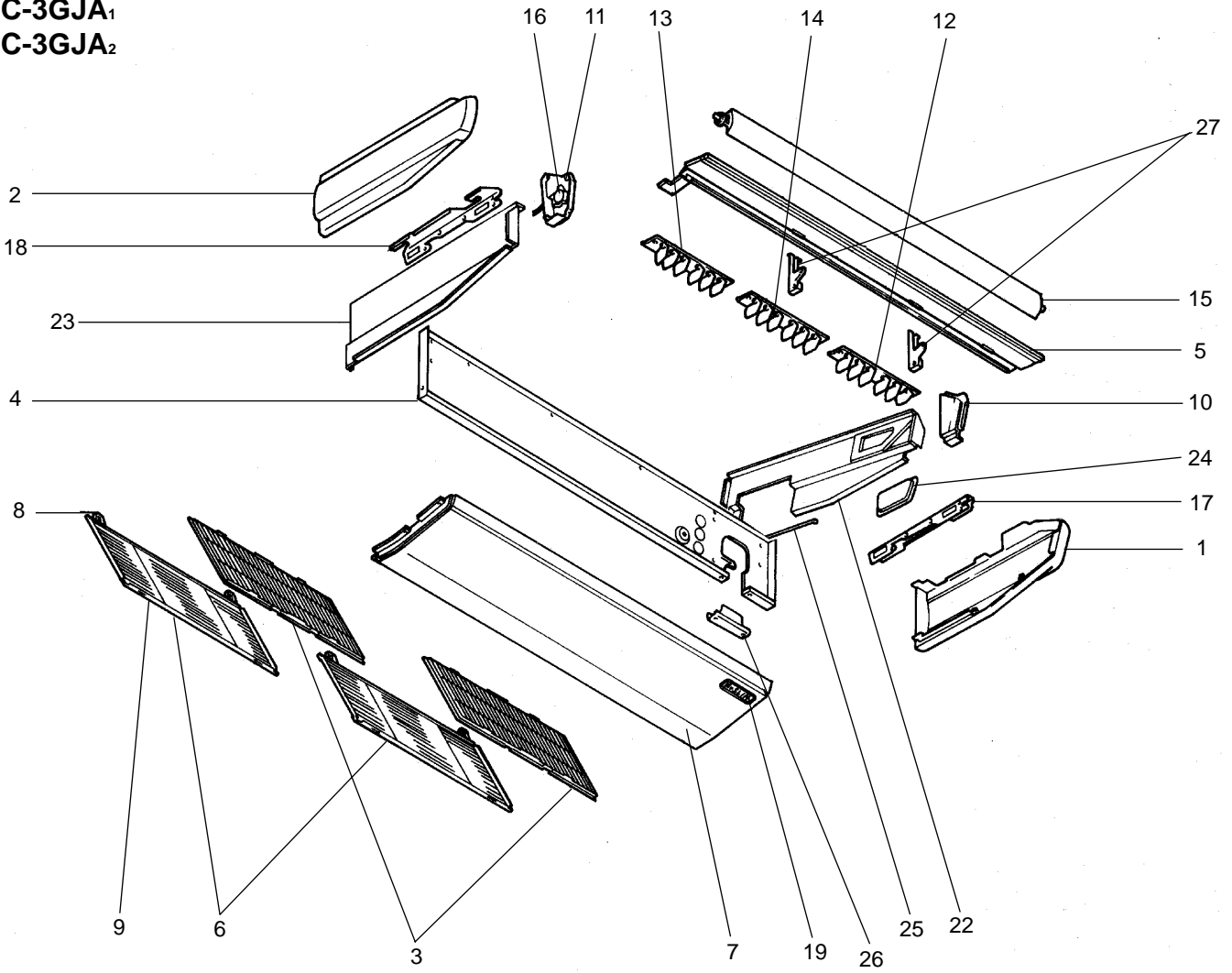
| No. | Part No. | Part Name | Specification | Q'ty / set | Remarks (Drawing No.) | Wiring Diagram Symbol | Recom- mended Q'ty | Price | |
|-----|-------------|-------------------------|---------------|--|--------------------------|-----------------------------|--------------------------|-------|--------|
| | | | | PC-3 GJA, GJA ₁ , GJA ₂ | | | | Unit | Amount |
| 1 | T7W 27K 310 | INDOOR CONTROLLER BOARD | | 1 | | I.B | | | |
| 2 | T7W 520 239 | FUSE | 250V 6.3A | 1 | | F1,2<l.B> | | | |
| 3 | T7W 23J 260 | TRANSFORMER | | 1 | | T | | | |
| 4 | — | CONTROL BOX | | 1 | (BG00N015G12) | | | | |
| 5 | T7W 39J 255 | FAN MOTOR CAPACITOR | | 1 | | C | | | |
| 6 | T7W 521 716 | TERMINAL BLOCK | 3P(L,N,⊕) | 1 | | TB2 | | | |
| 7 | T7W 512 716 | TERMINAL BLOCK | 2P(1,2) | 1 | | TB4 | | | |
| 8 | — | BOX COVER | | 1 | (BG02A804G13) | | | | |
| 9 | T7W 20K 200 | REMOTE CONTROLLER BOARD | | 1 | | R.B | | | |
| 10 | T7W 139 305 | REMOTE CONTROLLER CORD | 12m | 1 | | | | | |

STRUCTURAL PARTS

PC-3GJA

PC-3GJA₁

PC-3GJA₂



Part numbers that are circled not shown in the figure.

| No. | Part No. | Part Name | Specification | Q'ty / set | | Remarks (Drawing No.) | Wiring Diagram Symbol | Recom- mended Q'ty | Price | |
|-----|-------------|---------------------|---------------|-----------------------|------------------|--------------------------|-----------------------------|--------------------------|-------|--------|
| | | | | PC-3 | | | | | Unit | Amount |
| | | | | GJA, GJA ₁ | GJA ₂ | | | | | |
| 1 | R01 17J 661 | RIGHT SIDE PANEL | | 1 | 1 | | | | | |
| 2 | R01 17J 662 | LEFT SIDE PANEL | | 1 | 1 | | | | | |
| 3 | R01 A14 500 | L.L. FILTER | | 2 | 2 | | | | | |
| 4 | R01 29J 676 | REAR PANEL | | 1 | 1 | | | | | |
| 5 | R01 29J 651 | FRONT PANEL | | 1 | 1 | | | | | |
| 6 | R01 17J 691 | GRILLE ASSY | | 2 | 2 | | | | | |
| 7 | R01 29J 669 | UNDER PANEL | | 1 | 1 | | | | | |
| 8 | R01 17J 061 | GRILLE HINGE | | 4 | 4 | | | | | |
| 9 | R01 17J 054 | GRILLE CATCH | | 4 | 4 | | | | | |
| 10 | R01 17J 067 | RIGHT SIDE BOX | | 1 | 1 | | | | | |
| 11 | R01 17J 068 | LEFT SIDE BOX | | 1 | 1 | | | | | |
| 12 | R01 17J 085 | GUIDE VANE ASSY-6R. | | 1 | 1 | | | | | |
| 13 | R01 18J 086 | GUIDE VANE ASSY-6L. | | 1 | 1 | | | | | |
| 14 | R01 29J 087 | GUIDE VANE ASSY-6C. | | 1 | 1 | | | | | |
| 15 | R01 29J 002 | AUTO VANE | | 1 | 1 | | | | | |
| 16 | R01 29J 223 | VANE MOTOR | | 1 | 1 | | MV | | | |
| 17 | R01 17J 808 | RIGHT LEG | | 1 | 1 | | | | | |
| 18 | R01 17J 809 | LEFT LEG | | 1 | 1 | | | | | |
| 19 | R01 17J 070 | WIRELESS BOARD CASE | | 1 | 1 | | | | | |
| ⑳ | R01 17J 523 | JOINT SOCKET | | 1 | 1 | | | | | |
| ㉑ | R01 17J 072 | DRAIN HOSE COVER | | 1 | 1 | | | | | |
| 22 | R01 18J 665 | SIDE PLATE-R. | | 1 | 1 | | | | | |
| 23 | R01 18J 666 | SIDE PLATE-L. | | 1 | 1 | | | | | |
| 24 | R01 17J 668 | SERVICE PANEL | | 1 | 1 | | | | | |
| 25 | — | BEAM(GA) | | 2 | 2 | (BG17H464H08) | | | | |
| 26 | — | REAR SUPPORT | | 1 | 1 | (BG02H454H04) | | | | |
| 27 | — | VANE SUPPORT | | 2 | 2 | (BG02R321G06) | | | | |

Mr. SLIM™

 **MITSUBISHI ELECTRIC CORPORATION**

HEAD OFFICE MITSUBISHI DENKI BLDG. MARUNOUCHI TOKYO 100-8310 TELEX J24532 CABLE MELCO TOKYO