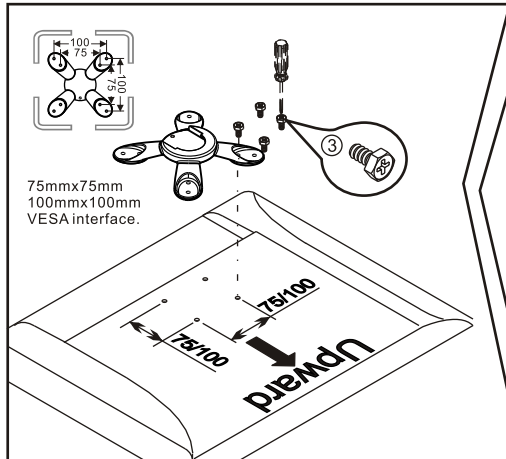


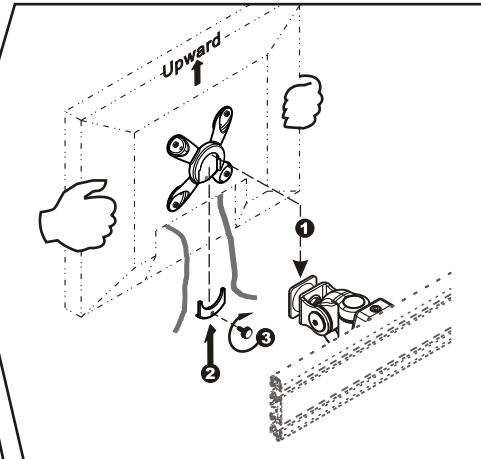
## Step 3

Place LCD with facing downward on flat surface. Place VESA on the LCD back as figure and align to the screwholes. Secure them together with four screws. And then tighten them up with screwdriver(not provided).



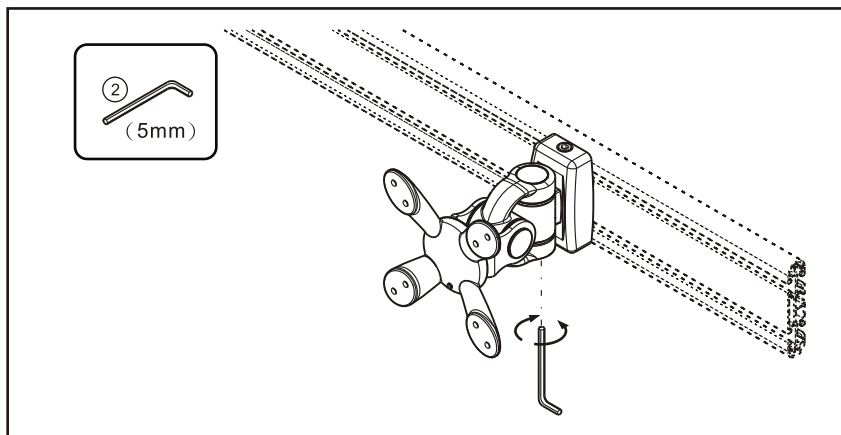
## Step 4

Insert the VESA(with LCD display on already) into the arm and press it down. Then secure fixing lump on VESA with knob.(as figure down step ①. ②. ③)



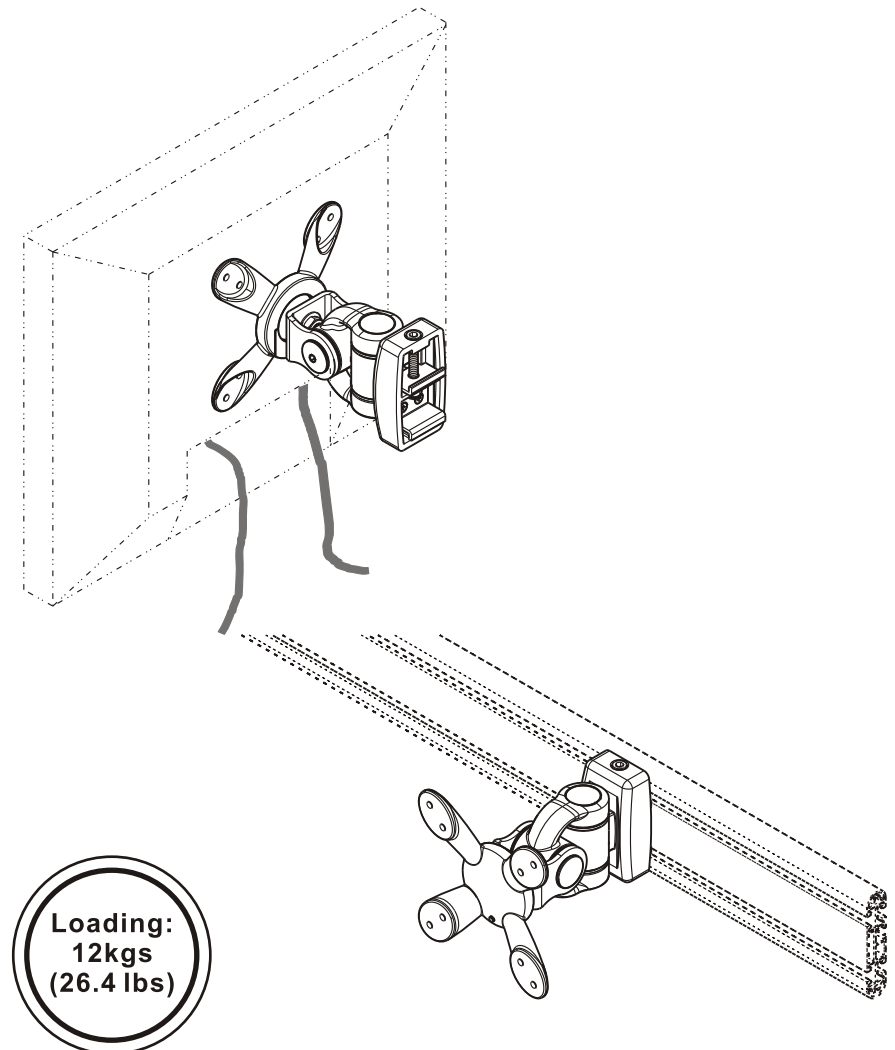
## Step 5

When the joint is loosen, please use the Allen Key(5mm) to tighten the arm.



# User Manual

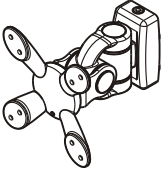
## LCD Monitor Arm LA-68-3



## LCD Monitor Arm — Assembly Guide

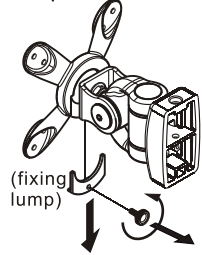
To mount your flat panel monitor or any parts at an ergonomically correct position, start at step 1 and continue as directed.

### Part Check-List

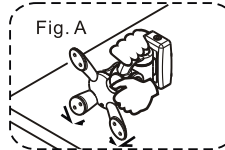
1	2	5	8
	(5mm) All Key x1	Nut x1	No.1 x1 set
	3	6	9
	Screw x4	Bolt x1	No.2 x1 set
	4	7	10
	Screw x2	Wrench x1	No.3 x1 set

#### Step 1

(1) Please loosen the knob at first, and then apart the fixing lump.



(2) Then, take VESA up. If it is difficult to take it up, you can take it by knocking slightly (as figure. A).

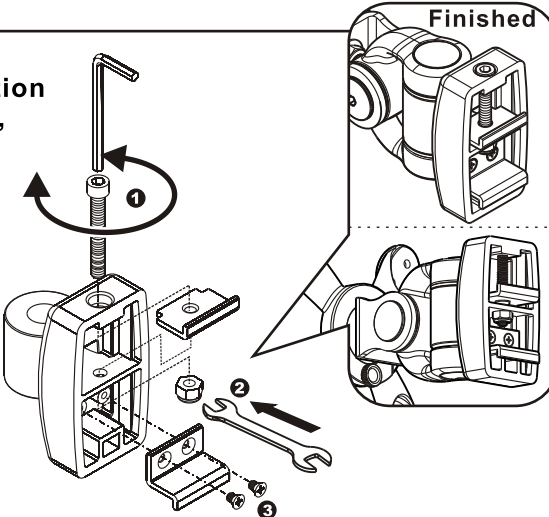


#### Step 2

Please option a suitable partition adjusts plate (as next page 02, figure A, B, C.) to meet your partition size.

- Use allen key to fix the bolt through the hole on the bracket top that will fix with the top adjust plate together.
- Use allen key and wrench to fix the nut to finish the fitting of top adjust plate.

- Use screw driver (not supply) fix the screw with the bottom adjusts plate (as figure step 3.)



## LCD Monitor Arm — Assembly Guide

- Please fitting the bottom adjusts plate with your partition first.
- Use allen key to loosen the bolt first and it is smooth move the first adjusts plate into the partition after tight the bolt for a fix position (as figure step 1. 2. 3. 4.)

