

GPS Tracker Watch LGW1 User Manual



Patent products, copyright reserved

1. Products Summary

- 1.1 Foreword
- 1.2 GPS tracker watch functions
- 1.3 Technical specifications

2. Attention

3. Introduction Of Products

3.1 Products appearance and key description

3.2 Screen Icon Descriptions

3.3 Menu Function

3.3.1 Power on/ off

3.3.2 SOS function

3.3.3 "Tel key" Speed dial function

3.3.4 Phone book function

3.3.5 Setting

3.3.6 Music

3.3.7 GPS Tracking

3.3.8 Clock Alarm

4. Mobile Phone SMS Set Tracking Guide

4.1 Setting SOS phone numbers

4.2 Get google link of position

4.3 Call back function

4.4 Listen function

4.5 Low battery automatic alarm

4.6 Set APN

4.7 Single time get watch's position

4.8 Set tracking on website in real time

4.9 Change password

4.10 Call Management

4.11 Restore factory settings

5. PC-WEB services platform

5.1 Login

5.2 Online Monitoring

5.3 Historical track playback

5.4 Geo-fence

5.5 Platform alarms

6. FAQ

1. Products Summary

1.1 Foreword

Welcome to use our GPS tracker watch, in order to help you to know this products and to operate the devices professional as soon as possible, we provide you with the instruction manual, please read this manual carefully before using the tracker watch.

1.2 GPS tracker watch functions

<ul style="list-style-type: none">➤ GPS satellite and LBS location➤ SOS➤ Family speedy dialing➤ PC real-time tracking➤ SMS location and tracking➤ Geo-fence	<ul style="list-style-type: none">➤ History and playback➤ Remote tracking and location➤ Alarm clock➤ MP3 Music player➤ Listen and call back
--	---

1.3 Technical specifications

Name	Parameter
Item	GPS tracker device
Battery volt	3.7V
Charging voltage	DC5V
Size of watch	Diameter:45MM / Depth:17MM
Working Temperature	-20℃ ~ +70℃
Storage Temperature	-40℃ ~ +85℃
Working frequency	GSM 850/900/1800/1900 MH
Sensitivity	
Sensitivity	GSM -108dBm /GPRS CS4 -102dBm
Tracking model	PC platform, SMS, etc.

2. Attention

Before using this GPS device, please read the instructions as follow:

- Make sure the SIM card is a standard GSM network card, but do not support 3G network.
- Make sure the GPRS functioning properly, recommending the GPRS meal (saving charge).
- Make sure the account of SIM card has enough money.
- Make sure the SIM card does not set a password (PIN1, etc.).
- Check the SMS inbox, if full, propose to delete some, otherwise cannot receive GPS tracking SMS.
- Check the SIM card is opened the Caller ID features. If not support caller ID feature cannot find the target location when hang up calls and monitoring functions.

- Contacting with your telecom operator for APN information and setting APN on the device. The factory default APN setting is CMNET
- Before tracking on the PC-WEB platform, please use the cell phone set up the admin/guardian number and related instructions.

3. Introduction Of Products

3.1 Products appearance and key descriptions



- 1: Switch key/ return key/call off
- 2: USB /earphone
- 3: SOS bottom/Confirm button/Dial button
- 4: Microphone

- 5: Down /tel2 key
- 6: Speaker
- 7: Up /tel1 key

8: Insert SIM card

Opening the battery cover, take out the battery, insert SIM card, and close the battery Cover (shown as below photos)



3.2 Screen Icon Descriptions



Battery charge status



Network signal strength



Alarm has been set



Ring mode



GPRS is available



GPS working

3.3 Menu Function

3.3.1 Power on/ off

Power on: Long press the Switch key for 3 seconds, the watch will power on, and auto searching GSM net, then should set the time zone (Set home), press the up or down button to choose your local city time zone.

Power off: Long press the Switch key for 3 seconds, the watch will power off.

3.3.2 SOS function

After setting administrator and guardian numbers successfully, long time press SOS button of the tracking watch, it will auto call 1SOS phone number, when the 1SOS does not answer or refused to answer the calling, the tracking watch will auto call 2SOS, when 2SOS not answer or refused to answer the calling, the watch will auto call 3SOS. It will loop calling 3 times. If all numbers not answer, the watch will auto send a SMS : "SOS+ detail address" to the 1SOS phone. Also, the web platform will receive this SOS alarm. If long time press call off button, it will close SOS function.

3.3.3 "Tel key" Speed dial function

Use the normal phone send this SMS to the watch.

**SMS Format: TEL1#phone number
TEL2#phone number**

For example: send SMS to the watch : **TEL1 #13800138008**

The watch will reply SMS: set TEL1 OK

And send SMS to the watch: **TEL2#13800138009**

The watch will reply SMS: set TEL2 OK

At the standby interface, long time press tel1 key, the watch will auto call tel1 number: 13800138008, and when long time press tel2 key, the watch will auto call tel2 number 13800138009.

3.3.4 Phone book function

(All telephone phone number need be saved in SIM card, the watch cannot add or edit any telephone number)

The watch cannot add contact number directly, you need to add contact numbers in the SIM card via other mobile phone. Then insert the SIM card to the watch, you can review all contact number. Preview number by press up bottom or down bottom, press Confirm button to make a phone call.

3.3.5 Setting

Profiles: All profiles includes normal mode, quiet mode, meeting mood, outdoor mood, my mood.

Setting volume: Find out volume menu, long time press up/down button to adjust.

Watch setting: Setting time and date, press confirm button to move figure, (such as year, month, day, hour, minute), press up/down button to adjust it.

3.3.6 Music

Pressing confirm button is play/suspend. Short time press up/down button is previous/next music. Long time press up/down is adjusting the volume.

Attention: The music can only be displayed when MP3 file should be put in root directory "my music".

3.3.7 GPS Tracking

Let GPS working in once time and get the location of the watch at present. (this function

just working outside)

3.3.8 Clock Alarm

Press confirm button into clock alarm menu, press confirm button to choose figures(hour, minute), pressing up/down to adjust the number, press return bottom to save it and exit.

4. Mobile Phone SMS Set Tracking Guide

4.1 Setting SOS phone numbers

Format: **1SOS#0000#phone number**

2SOS#0000#phone number

3SOS#0000#phone number

Total can set three SOS phone numbers. "0000" is the default password of the watch. This password is very important, can change the SOS phone number in any normal phone when have this password. (Change the password please see below: "5.8 Change password".)

For example:

Use the normal phone send SMS to the watch:

1SOS#0000#13800138000

The watch will reply SMS: set 1SOS ok, then phone number 13800138000 will become the watch's 1SOS (admin) number.

2SOS#0000#13800138001

The watch will reply SMS : set 2SOS ok, then phone number 13800138001 will become the watch's 2SOS(guardian 1)number.

3SOS#0000#13800138002

The watch will reply SMS : set 3SOS ok, then phone number 13800138002 will become the watch's 3SOS(guardian 2)number.

But also you can just set 1 or 2 SOS numbers.

This SMS also can change the SOS phone number. Fox example:

Use the normal phone send SMS to the watch:

1SOS#0000#13800138003

The 1SOS phone number of the watch will update to be 13800138003.

4.2 -4.11 all this SMS command must send by SOS phone number

4.2 Get google link of position

Use any SOS phone number send this SMS to the watch:

SMS format: 01

This command need the watch outside and can get the GPS signal.

4.3 Call back function

Use any SOS phone number send this SMS to the watch:

SMS format: 02

the watch will auto call back to this sos phone number to have a two-way conversation(can talk with each other).

4.4 Listen function

Use any SOS phone number send this SMS to the watch:

SMS format: 03

After send out this SMS, the watch will call back to this SOS phone number automatically to have a one-way conversation. This SOS phone can monitor the sound around the watch, but the watch cannot hear any sound. The watch is auto locked (all buttons and screen failure and no response.)

4.5 Low battery automatic alarm

Use any SOS phone number send this SMS to the watch:

SMS format: 04

Feedback message: set low battery ok!

When the watch show low battery, there will be a message sent to **1SOS phone number** automatically.

4.6 Set APN (China do not need to set APN, but Hong Kong, Taiwan and Oversea need to set the APN of local operators)

If you want "tracking by SMS to get position's detail address" or "tracking on the website", must set APN frist. (such as below 4.7 and 4.8)

Format: **06#0000#Sim card operator name#APN name#user name#user password**

For example: use 1SOS mobile phone send this SMS to the watch:

06#0000#china wap#cmwap#hhh#123

The watch will auto reply SMS to the 1SOS phone:" Set APN OK".

Sim card operator name and APN name should check with the user's Sim card local operator. If have not user name and password, this SMS should be:

06#0000#chaina wap #cmwap##

This SMS command only can be set and changed by **1SOS (Admin) number**.

4.7 Single time get watch's position

After APN set successful, you can use any SOS phone number send this SMS to the watch:

SMS format: 05

The Watch will reply the detail position with street name to this SOS phone number by SMS.

4.8 Set tracking on website in real time

Use any SOS phone number send this SMS to the watch:

SMS format: 08# interval time (seconds)

For example: Send the SMS to the watch: **08#60**

Feedback message: set 08 OK

60 is the interval time, means every 60 seconds the watch will update the position data on website.

This SMS command will let the GPS always working, the battery will running fast, if no need see the website tracking in real time, please shut off this function to save the battery.

Send this SMS to shut off this function: 08#0

Feedback message : set off

And every time turn off the watch, need resend this SMS to get real time tracking if need this function (to save battery purpose)

4.9 Change password

SMS format: 066#old password#new password

The default password is 0000. This command only can be set and re-set by 1SOS number.

For example: Use 1SOS phone number send this SMS to the watch:

066#0000#1234

Feedback message: set psw ok!

The watch's password have changed from 0000 to be 1234.

4.10 Call Management

SOS numbers send SMS to watch for example:: **77**

When the watch receive this command, any other numbers cannot call except the three SOS numbers can call the watch.

SOS numbers send SMS to watch for example: **99**

Allow all the normal phone numbers can call the watch

4.11 Restore factory settings

1SOS numbers send SMS to watch: **77#99#0000**

0000 is the password, this will Restore watch's all settings, including user information, etc.

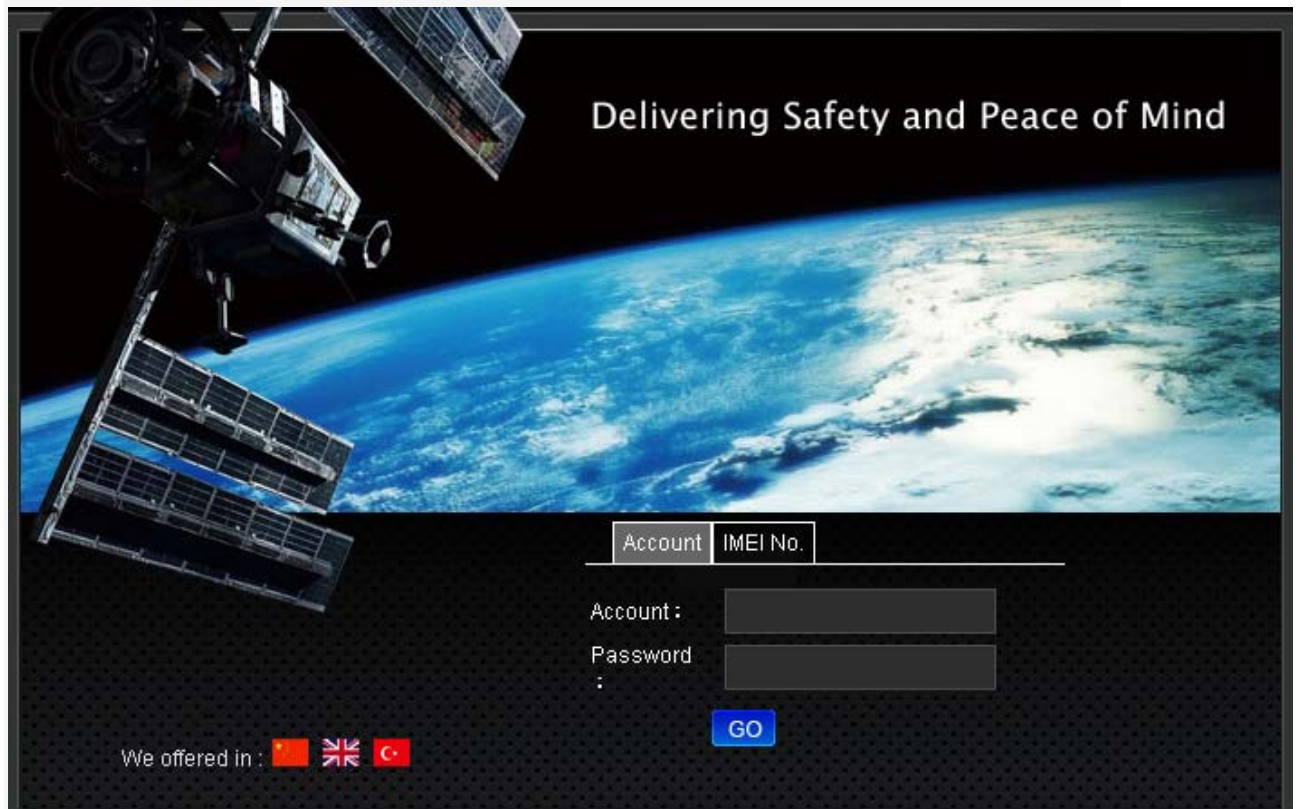
5. PC-WEB services platform

5.1 Login

Login the WEB of the service platform---- www.gps1199.com with a user name, password, click "GO" to enter the platform interface.

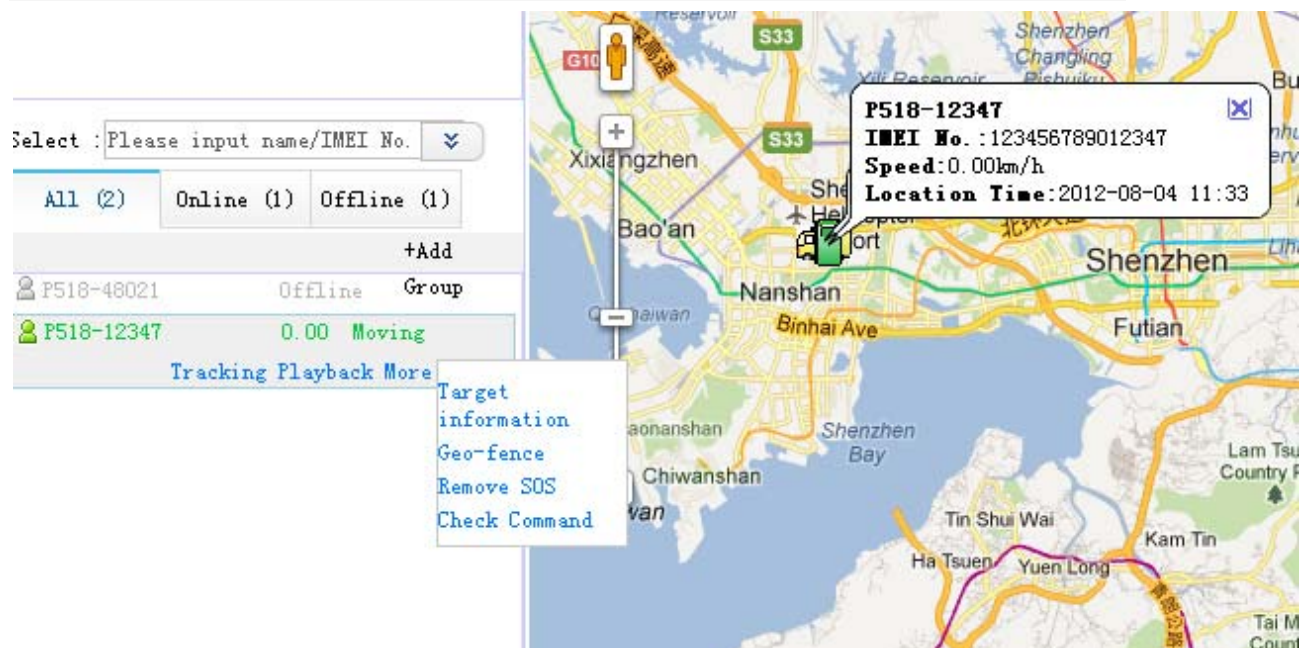
The user name is the IMEI code of the watch (Method 1: watch IMEI number is attached to the watch behind with 15 digitals, Method 2: In the menu interface, long press the down key to view the IMEI number)

Default password: 123456, you can change it on website.



5.2 Online Monitoring

Select the watch device's name on the left device list, click it then it will show you its latest position on the Map.



Convenient tips:

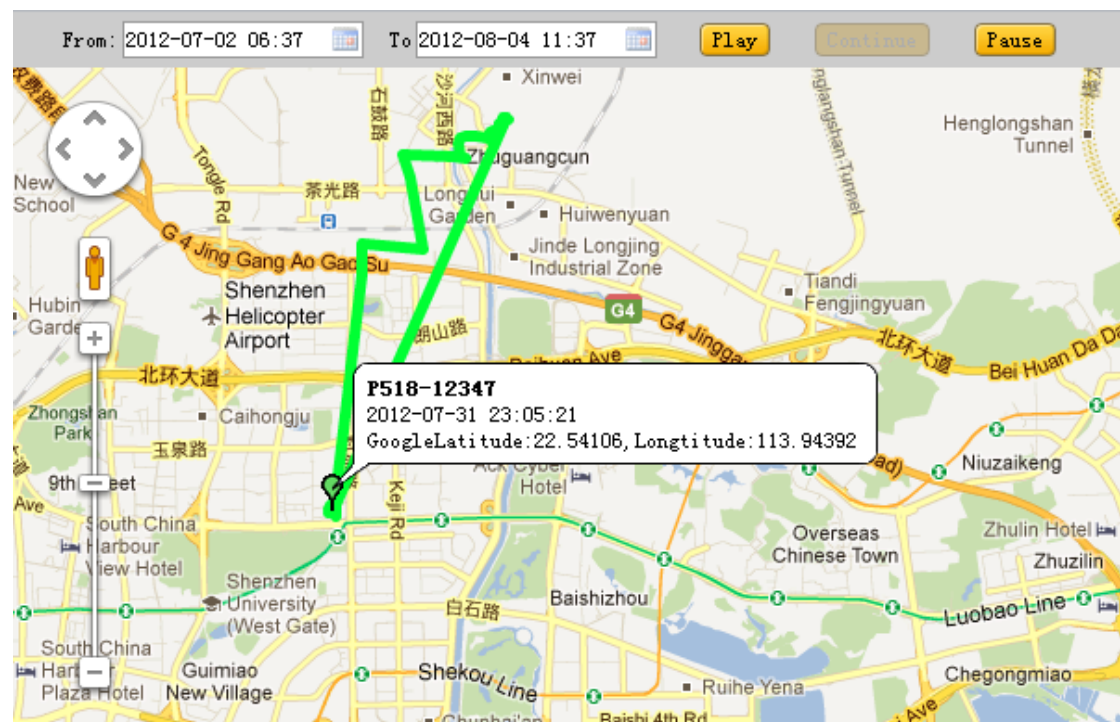
You can select real-time tracking, historical playback, Geo-fence ect. functions on the display list.

4 Refresh after seconds! Nanshan, Shenzhen, Guangdong, China



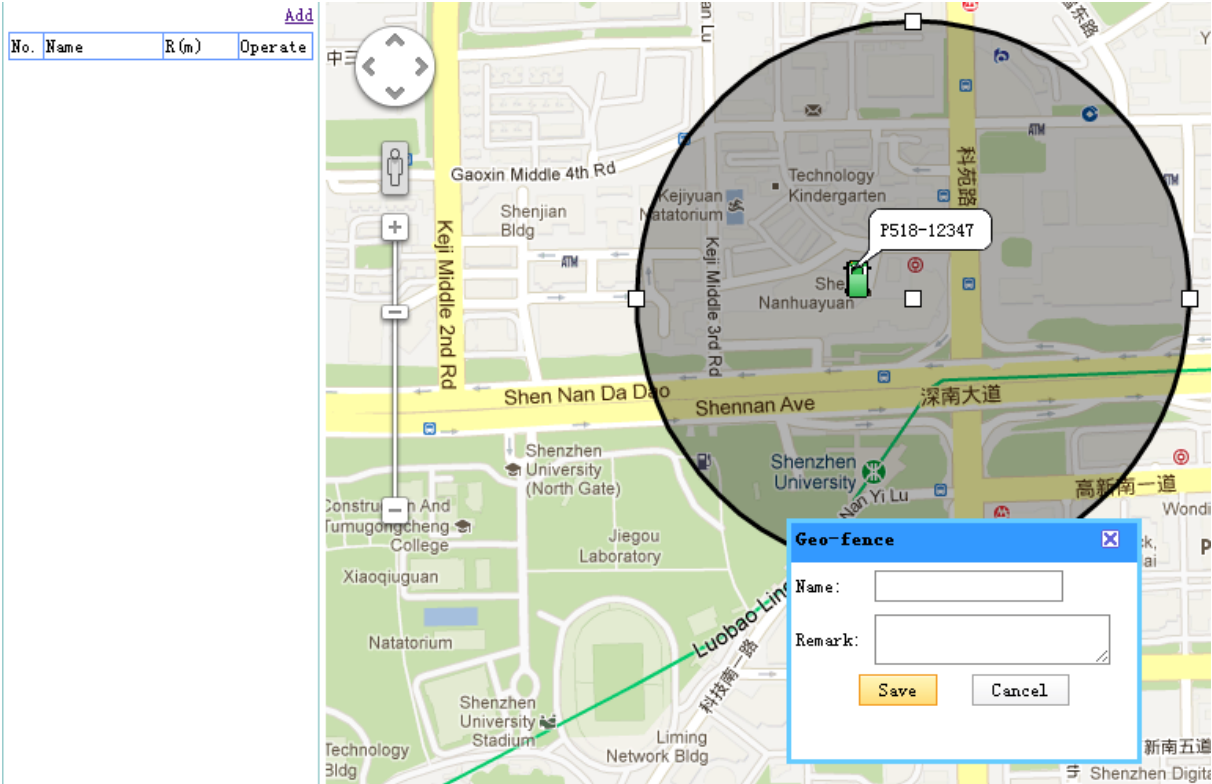
Real-time tracking interface

5.3 Historical track playback



Track playback

5.4 Geo-fence



Click the "new electronic fence" button on the top left corner. There will be a circular fence area display as the figure, the size range of electronic fence can be selected by dragging edge of any shape region, platform will alarm when watch is beyond the fence area.

5.5 Platform alarms

Alarm message						
Target Name	IMEI No.	Alarm Type	Alarm Time	Location Time	Type	Status
P518-48021	354357000048021	Cut-off Alarm	2012-08-03 19:16	2012-08-03 19:14	P518	Undealed
P518-48021	354357000048021	Cut-off Alarm	2012-08-03 14:47	2012-08-03 14:45	P518	Undealed
P518-48021	354357000048021	SOS Alarm	2012-08-03 11:52	2012-08-03 11:52	P518	Undealed

Click "message" menu on the top right corner of map to check all alarms.

6. FAQ

Question	Solution
Tracking Watch shows no services after Starting-up	Please check the SIM card if inserted.
Watch cannot make calling	Make sure the host SIM card whether open caller ID display
The watch cannot send the location information to the service platform	Please check the account of SIM card
Cannot get online information of Tracking Watch on service platform	Please check the watch operating mode
Send SMS command but without confirmation by SMS	Confirm the SMS Editorial content format is correct, and if the sender is SOS number
Single time location just with latitude and longitude coordinates, no more details description	Make sure if the GPRS transmission failure due to SIM card arrears