

# Operating Instructions

**Alcolock**

**VOLVO**



---

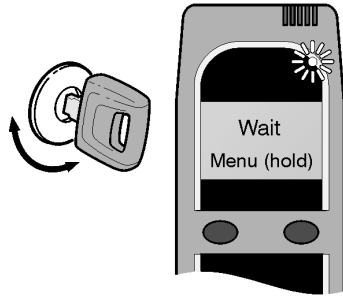
# Contents

<b>Basic operation</b> .....	1
General .....	1
<b>Advanced operation</b> .....	4
Restarting the vehicle .....	4
Sharing a vehicle .....	5
Energy conservation .....	9
<b>Additional features</b> .....	10
Volume control .....	10
Language selection .....	11
Dates .....	12
<b>User messages</b> .....	13
General messages and errors .....	13
Technical messages and errors .....	14
<b>Index</b> .....	15



## General

1 Turn the ignition key ON-OFF to wake-up the handset.

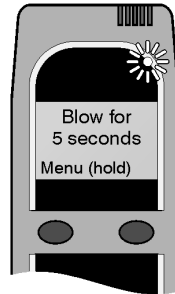


T3020677

**Note:** The ignition key should be in the OFF position when the handset is warming up.

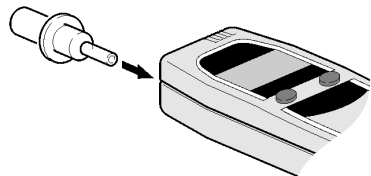
2 Wait for the handset to display “Blow for 5 Seconds” Status LED will be flashing green

Depending on the ambient temperature, you may need to wait a few seconds (approximately 15 seconds at 20°C, approximately 1 minute at 0°C).



T3020678

3 Insert a mouthpiece into the handset. New users should obtain a new mouthpiece.



T3020679

## 2 Basic operation

---

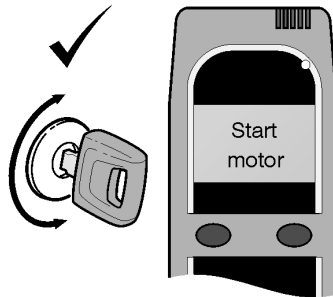
**4** Blow into the mouthpiece with moderate force. The ALCOLOCK will generate a continuous tone to indicate adequate air flow. Do not stop blowing until you hear a beep and a click is felt inside the handset. The LCD should display “Wait”

If you blew incorrectly, the LCD will display “Blow Softer” or “Blow Longer and Harder”. Wait for the handset to display “Blow for 5 Seconds” before trying again.

Observe the test result indicated on the handset.

**5A** If “Start Motor” is displayed on the LCD and the status LED is solid green, you passed the breath test. The measured alcohol level is between 0.00 to 0.10% BrAC.

You have 5 minutes to start the vehicle.

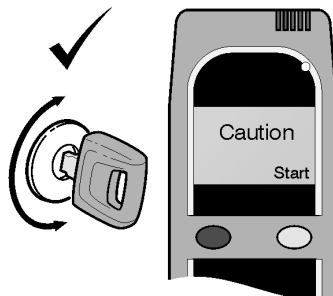


T3020680

**5B** If “Caution” is displayed on the LCD and the status LED is solid yellow, you passed the breath test but alcohol was detected. The measured alcohol level is between 0.11 to 0.19% BrAC. You have 2 options:

Press the right button to accept the risk in driving. You have 5 minutes to start the vehicle.

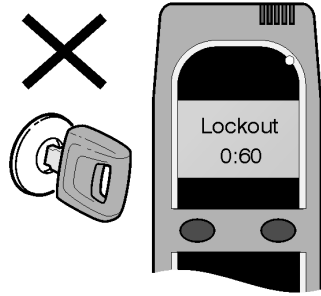
Wait 5 minutes. Conduct another breath test.



T3020681

**5C** If “Lockout 0:60” is displayed on the LCD and the status LED is solid red, you have exceeded the 0.20‰ BrAC limit. You cannot start the vehicle.

Wait 60 seconds for the lockout timer to expire. Conduct another breath test.



## 4 Advanced operation

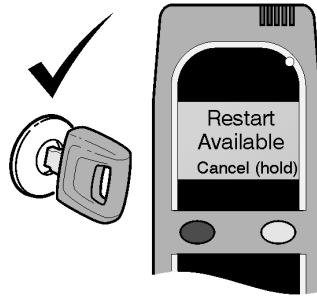
---

### Restarting the vehicle

If the motor was turned OFF for less than 30 minutes, you can restart the motor without performing another breath test. This is a safety feature which allows you to quickly restart the motor if it stalls on the road. It is also convenient for making frequent short stops.

Observe the message displayed on the handset

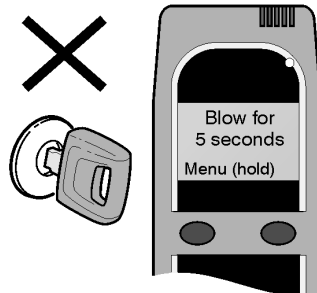
**1A** If “Restart Available” is displayed on the LCD, you can start the vehicle without a breath test.



T3020683

**Note:** To cancel the restart, press and hold the right button.

**1B** If “Blow for 5 Seconds” is displayed on the LCD, the restart period was expired and you need to pass another breath test to start the vehicle.



T3020684



## Sharing a vehicle

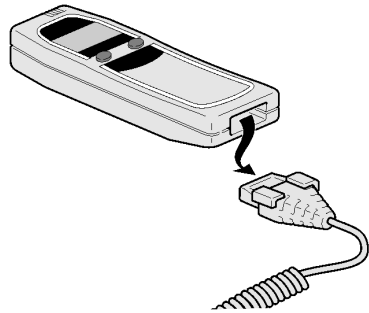
Drivers with their own personal handset can operate the same vehicle without reprogramming the ALCOLOCK. All the custom settings are downloaded into the ALCOLOCK ECU every time a new handset is plugged in.

The handset can be exchanged while the ignition is ON or OFF.

It is strongly recommended you do not exchange the handset while the vehicle is ON. You will be required to conduct a breath test which may distract your attention from the road.

In the interest of your own safety, you should only exchange handsets when the vehicle is parked and the ignition is OFF. To replace the handset while the ignition is OFF, simply unplug the old handset and plug in the new one, as described below.

**1** Pinch both sides of the connector at the bottom of the handset to unplug the handset from the handset cable.



T3020685



### WARNING

Do not pull on the handset cord. The connector is similar to an RJ-45 phone jack and requires a gentle squeeze on the release tabs.

**2** The LCD display will be blank once the cable is disconnected as shown on the left.

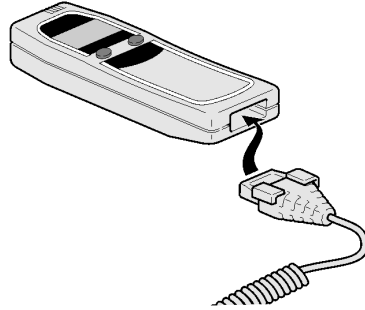
## 6 Advanced operation

---

**3** Reconnect an ALCOLOCK handset to the handset cable by inserting the cable into the bottom of the handset. You should hear a light click!

All your custom settings will be downloaded into the ALCOLOCK ECU.

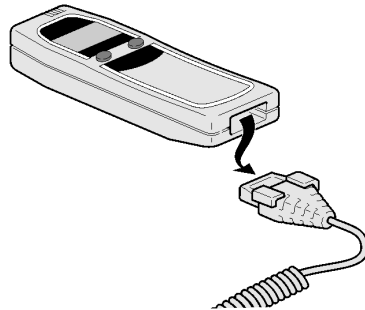
The ALCOLOCK is now ready for normal operation.



T3020686

**The following steps must be taken if the handset was exchanged while the ignition was ON.**

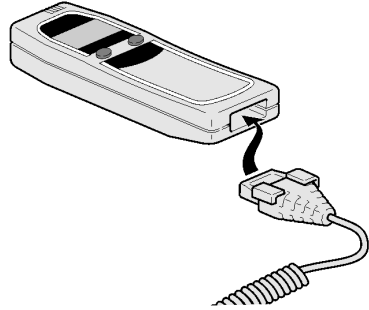
**1** Disconnect the ALCOLOCK handset cable from the handset.



T3020685

**2** The ALCOLOCK ECU will beep twice every 15 seconds to remind the driver the handset is disconnected while the motor is running.

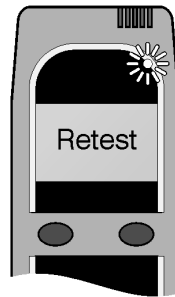
**3** Use moderate force to plug the new handset cable into the ALCOLOCK handset receptacle. You should hear a light click!



T3020686

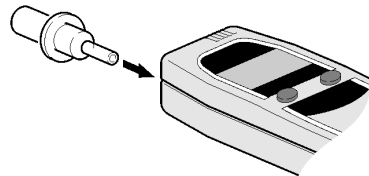
**4** Depending on the ambient temperature, you may need to wait a few seconds. During this time “Wait” will be displayed.

Wait for the handset to display “Retest”. Status LED will be flashing green.



T3020687

**5** Insert a new mouthpiece into the handset.



T3020679

## 8 Advanced operation

---

6 Blow into the mouthpiece with moderate force. Do not stop blowing until you hear a beep and a click is felt inside the handset. The LCD should momentarily display “Wait”.

If you blow incorrectly, the LCD will display “Blow Softer” or “Blow Longer and Harder”. Wait for the handset to display “Retest” before trying again.

Observe the message displayed on the handset

If “Drive Safely” is displayed on the LCD and the status LED is solid green, you passed the breath test.

You can continue to drive the vehicle.

If “Pull over, Turn Off Motor” is displayed on the LCD and the status LED is flashing red, you have exceeded the BrAC limit.

You must safely pull over and turn OFF the motor.

Wait for the restart and lockout timer to expire before attempting another breath test.

## Energy conservation

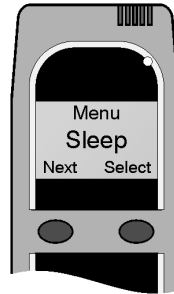
The ALCOLOCK can be placed into sleep mode after the motor has been turned OFF. In sleep mode, the ALCOLOCK will operate at minimum power to conserve energy in your vehicle battery.

To place the ALCOLOCK into sleep mode, simply press and hold both buttons. Alternatively, you can wait until the sleep timer expires. You can choose from 4 sleep times as described below.

**1** Press and hold the left button to access the user menu.

Use the left button to scroll to Sleep.

Press the right button to select this option.



T3020688

**2** The Sleep submenu contains 4 pre-programmed sleep times: 5, 30, 60 and 90 minutes.

Use the left button to browse through the selection

**3** Press and hold the right button to save and exit the Sleep submenu.

Select Exit to return to normal operations.

## 10 Additional features

---

### Volume control

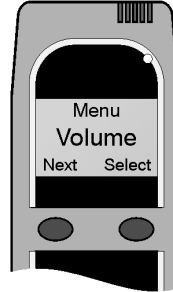
Audio tones have been added to the handset to improve the user experience. The volume of these tones can be set inside the user menu.

**1** Press and hold the left button to access the user menu.

Use the left button to scroll to Volume.

Press the right button to select this option.

**Note:** The volume setting applies to the handset only. These settings do not apply to the ALCOLOCK ECU.



T3020689

**2** Use the pushbuttons to adjust the volume of the handset.

**3** Press and hold the right button to save and exit the Volume submenu.

Select Exit to return to normal operations.

**Note:** Left button decreases the volume.  
Right button increases it.

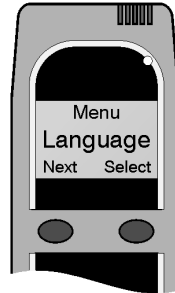
## Language selection

The ALCOLOCK can display text messages in several languages. Access the user menu to change the display language.

**1** Press and hold the left button to access the user menu.

Use the left button to scroll to Language.

Press the right button to select this option.



T3020690

**2** Use the left button to browse through the available languages.

**3** Press and hold the right button to save and exit the Language submenu.

Select Exit to return to normal operations.

## 12 Additional features

---

### Dates

As with other breath alcohol testers, the ALCOLOCK handset must be calibrated every 12 months to maintain its accuracy. Failure to calibrate the ALCOLOCK within the designated period will disable the breath testing feature.

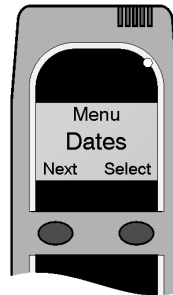
A service reminder will be displayed on the handset 14 days before the calibration period expires. The calibration expiry date can also be viewed in the user menu as described below.

Additional important dates such as current clock date and time, service date and lockout date can be found in this menu.

**1** Press and hold the left button to access the user menu.

Use the left button to scroll to Dates.

Press the right button to select this option.



T3020691

**2** Press the left button until the calibration expiry date appears on the LCD.

**3** After you have finished reviewing the date, press and hold the right button to exit the Dates submenu.

Select Exit to return to normal operations.



## General messages and errors

### 1 Calibration Expired

After one year of operation the ALCOLOCK will require calibration. Once the calibration period has expired the vehicle can be started without a breath test. Press the right button and turn the key in the normal sequence and the motor will be allowed to start.

**Note:** Calibrate the handset yearly

### 2 ADR Incompatible

Your VOLVO ALCOLOCK is safe to use in ADR—applications. Always make sure that an ADR compatible handset is used.

Newer non ADR compatible ALCOLOCK V3 handsets will temporarily display “ADR incompatible” when they are first connected along with a warning tone. These handsets will operate correctly, but the vehicle will no longer be allowed to transport hazardous goods.

### 3 Other errors

The handset may not accept a breath test for various reasons and messages such as Invalid Sample, Cancelled Try again, communication error, RF (radio frequency) detected, Incorrect or Low voltage. To minimize errors, ensure that the handset is connected properly and cabling, connectors and vehicle battery are in good condition. Turn mobile phones off. Attempt the test again.

### 4 The ALCOLOCK handset stops working.

If a problem occurs after engine shut-down, the motor can be started using a four digit code. The code may be requested via Volvo Action Service. The code is replaced every day and it may not be used over a long period of time. The vehicle must be driven to a workshop to get the ALCOLOCK handset repaired.

# 14 User messages

---

## Technical messages and errors

### 1 Clock Error

The VOLVO ALCOLOCK receives its time signal from the vehicle's tachograph. Should the tachograph fail or be removed for servicing, a "Clock error" message will be displayed for several seconds. The handset will operate correctly, but dates will not be correctly displayed until a properly functioning tachograph is connected.

### 2 Technical Error

Should the handset detect an internal power failure "Technical error" will be displayed.

In this state, the motor can be started by pressing the right button and turning the key in the normal sequence. No breath test is required when a technical error is detected.

### 3 Error codes

The handset will display error code 10, 20, 30, 40, 45 or 50 if a technical fault is detected. The handset will reset to allow the user to attempt another breath test. If the condition persists the ALCOLOCK will require servicing.

## Index

### A

- Additional features..... 10
- Advanced operation..... 4

### B

- Basic operation..... 1

### R

- Restarting vehicle..... 4

### S

- Sharing a vehicle ..... 5

### U

- User messages..... 13

**VOLVO**

**Volvo Truck Corporation**  
Göteborg, Sweden

88989672 English



NORDIC ECOLABEL printed matter, 341 123

Printed in Sweden