

# **OPERATING INSTRUCTIONS**

HAZARDOUS GOODS CONTAINERS FROM METAL (IBC.)

FOR LIQUID SUBSTANCES

**MDT 445-DW MDT 850-DW MDT 1000-DW**

**Mobile diesel filling tank – double-walled**



**OTTO Entsorgungssysteme GmbH**  
Geschäftsbereich Gefahrgut

Eisenstraße 2  
D-57482 Wenden-Gerlingen  
Phone: +49(0)2762/9839-401  
Fax: +49(0)2732/9839-200

### **Information on the operating instructions**

These operating instructions describe use, transport, installation, emptying, and filling as well as repetitive inspection of the mobile diesel filling tank, types MDT 1000, 850 and 445-DW.

### **Safety information, instructions**

- MDT-DWs with this equipment may only be used for diesel.
- The operator may use MDT-DWs only for diesel for which compatibility with container materials, fittings, locks, and seals has been demonstrated.
- Each MDT-DW must be submitted to an internal inspection at intervals of 2.5 years (see paragraph "Inspections").
- Furthermore, each MDT-DW must be submitted to official inspection at regular intervals of 5 years (see paragraph "Inspections").
- A report on internal inspections must be filed by the owner until the next inspection (see paragraph "Inspections").
- Any major modifications of MDT-DW, including attachment parts, will lead to the expiry of the UN approval. The transport of diesel in MDT-DWs which are not approved is prohibited.
- Only use original spares for repairs.
- Restraints mentioned in the certificate of approval must be adhered to.
- MDT 1000-DW, MDT 800-DW and MDT 445-DW hazardous goods containers were first submitted to a design and construction test according to the IBC design approval.

### **Description of MDT-DW**

MDT-DW is a rectangular, double-walled container fastened to a transport rack using bolts. The container is made from steel and has a volume of 1000, 850 and 445 litres respectively. The fittings area on top is protected on the sides using welded baffles and on top using two lockable covers. In the fittings area, the following items are accommodated: a DN 400 manhole with hinged screw cover, ventilation, pump including counter, automatic filling nozzle with 6m hose, limit indicator and MK50 – VB50 tanker vehicle coupling. MDT-DWs are stackable and can be transported using a crane, forklift truck and lift truck.

The various MDT-DW designs differ by height, the surface area remaining the same.

**Technical data**

	<b>MDT 1000-DW</b>	<b>MDT 850-DW</b>	<b>MDT 445-DW</b>
<b>Surface area</b>	1030x1230 mm	1030x1230 mm	1030x1230 mm
<b>Height</b>	1520 mm	1400 mm	960 mm
<b>Dead weight</b>	400 kg	380	320 kg
<b>Total weight</b>	1576 kg	1400 kg	853 kg
<b>Volume</b>	1000 l	850 l	445 l
<b>Approval no.</b>	D/BAM/0465/31A	D/BAM/0465/31A	D/BAM/0465/31A

**Material certification**

<b>Container:</b>	St 37-2 Hot-dip galvanized to DIN 50976.
<b>Rack:</b>	St 37-2 Hot-dip galvanized to DIN 50976.
<b>Dome lid:</b>	St 37-2 Hot-dip galvanized to DIN 50976.
<b>Dome lid seal:</b>	Perpunan, other materials available on request
<b>Fittings:</b>	Brass
<b>Fittings' seals:</b>	Teflon
<b>Bolts etc.:</b>	Electrogalvanized

**Purpose of MDT-DW**

- MDT-DW filling tanks are permitted for transport, storage and filling of diesel.

**MDT-DW transport**

- Transport and relocation is limited to trained and instructed staff. Relocation and transport of MDT-DW may only be carried out using appropriate, reliable equipment.
- Diesel transport in defective and non-approved MDT-DWs is prohibited.
- MDT-DW, lid, locks and seals must be checked by the user for flawless condition prior to transport.  
The shut-off valve of the suction line and of the ventilation must be locked by all means.
- During transport, no dangerous residues of the content must stick to the outside of MDT-DW.
- During transport, MDT-DW must be safely locked in place or locked inside the transport unit so as to be protected from crosswise and lengthwise movement or shocks and to be suitably protected from the outside.

### **Installation and storage of MDT-DW**

- Installation and storage of MDT-DW is limited to trained and instructed staff.
- No liquid shall be visible in the double shell inspection glass. Check using the dipstick of the double shell as appropriate.
- The container location must be well ventilated.
- MDT-DW must be installed on a level floor.
- MDT-DW must be protected from weathering, direct sunlight and radiation heat.
- MDT-DW must not be put at risk by traffic of vehicles, work equipment or loads.
- Open the shut-off valve of the suction line and of the ventilation.

### **Filling the MDT-DW**

- Filling of MDT-DW is limited to trained and instructed staff.
- The tank, lid, locks and seals must be checked by the operator for flawless condition prior to each service assignment.
- Any damage to the container wall, floor, lids, seals and locks must be immediately remedied as required, or the container may have to be correctly disposed of and replaced.
- Filling of defective and leaking MDT-DWs is prohibited.
- Fill thoroughly. Any spilled liquid must be immediately and correctly removed.
- MDT-DW is filled through the tanker vehicle coupling. The filling level is limited by the activated limit indicator.  
The shut-off valve of the ventilation must be open.
- After each filling operation, the tanker vehicle coupling must be closed.

### **Emptying the MDT**

- Emptying of MDT-DW is limited to trained and instructed staff.
- The MDT-DW is emptied using the filling pump and nozzle with automatic stop. The shut-off valve of the suction line and of the ventilation must be open.

### **Inspection**

All MDT-DWs must be submitted to “initial and repetitive inspections”. Initial inspection is carried out by the manufacturer prior to first use of the container for transport purposes. This inspection is followed by repetitive inspections at intervals of max. 2.5 years, i.e., the first internal inspection prior to 2.5 years. This inspection may be performed by an expert employee of the company.

Furthermore, each MDT-DW must be submitted to an official inspection at 5-year intervals to be carried out by an “authorized inspecting body”.

Being holders of an approval as “authorized inspecting body”, we can offer you this service. For enquiries, please contact:

**OTTO Entsorgungssysteme GmbH**  
Geschäftsbereich Gefahrgut

Eisenstr. 2  
D-57482 Wenden-Gerlingen  
Phone: +49(0)2762/9839-401  
Fax: +49(0)2762/9839-200

Internal inspections must cover the following individual checks:

#### **1. Leak test**

- Constant overpressure of 20kPa (0.2 bar) with air.
- Min. holding time 10 minutes.
- Airtight capability of MDT to be established using appropriate methods.  
Spraying of Nekal or soap suds onto weld seams, lid seals and fittings,  
alternatively air pressure differential test  
or immersion of the MDT into water.
- There must be no leaks.

#### **2. Visual inspection of internal and external condition**

- Damage and corrosion on MDT frame and container.
- Damage to equipment.
- Condition of weld seams and joints.
- Condition of load lift mechanisms.
- Condition of container inside.

Successful internal inspection must be documented on the nameplate and in a test report. The test report must be filed until the time of the next inspection.

### **Spare parts management**

All information required for ordering spares can be found in our spare parts list. For expedient handling of your order, we will need the following information:

- Our designation of the spare part
- Order quantity (quantities quoted in the spare parts list relate to the total number of parts contained in the subassembly concerned)
- Designation of container, production number, year of construction

Please address all spare parts orders to:

**OTTO Entsorgungssysteme GmbH**  
Geschäftsbereich Gefahrgut

Eisenstr. 2  
D-57482 Wenden-Gerlingen  
Phone: +49(0)2762/9839-602  
Fax: +49(0)2762/9839-200

Store spares in a dry, dust-free place and protect them from frost and heat. We recommend the setting up of a racked storage for these items.

We explicitly point out that any parts other than original parts and accessories supplied by us have not been tested and released by us. Installation or attachment and use of such parts may affect specified design features of the container.

We accept no liability for damage resulting from the use of external spares and accessories.

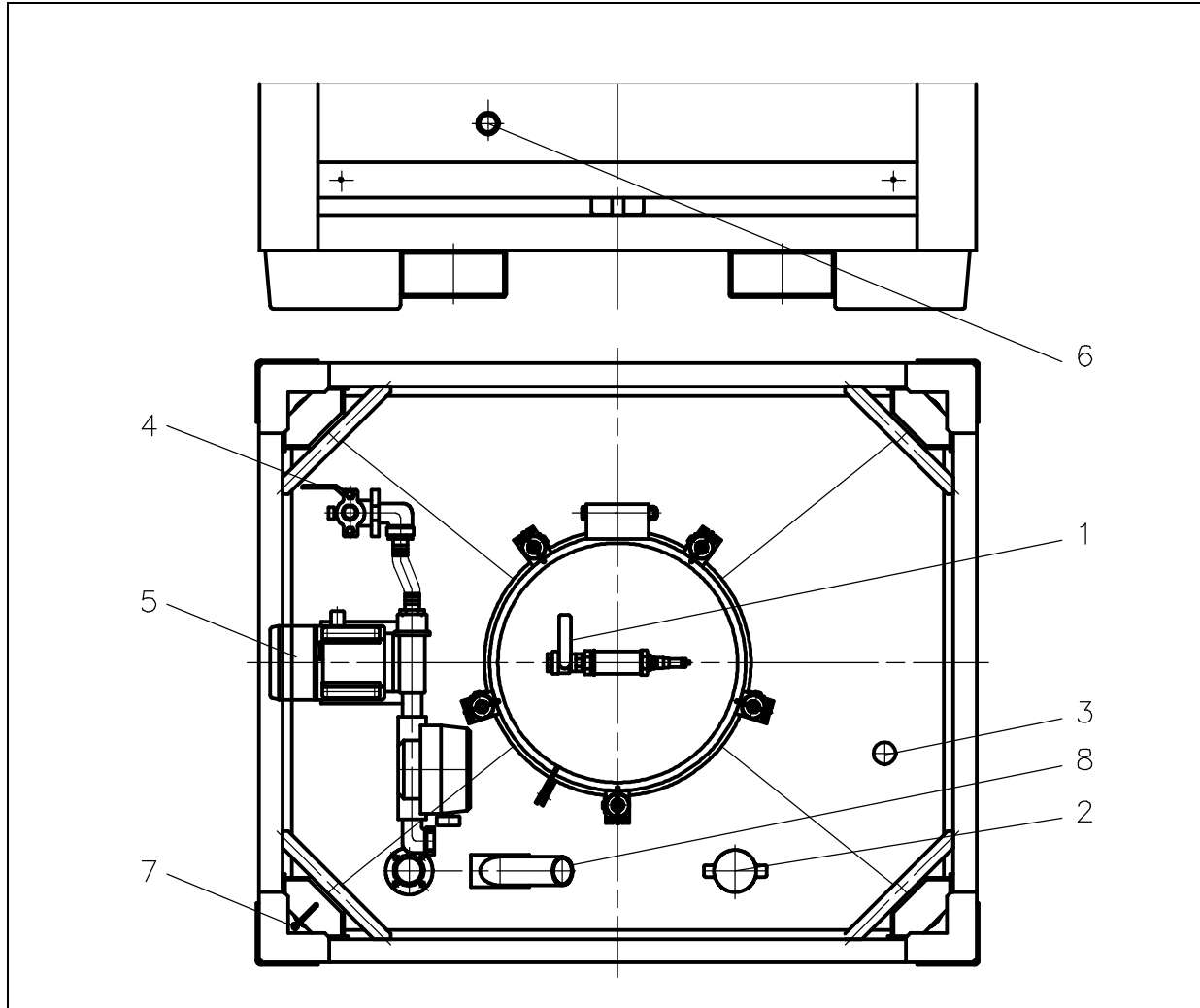
### **After sales service**

After sales service is provided within the framework of the guarantee. The guarantee period is 1 year after commissioning and applies to all parts except for wearing parts.

Any after sales service beyond this period is subject to special agreements or may be agreed with us as needed.

For any other technical issues, please contact us at the address indicated above.

**Operating instructions**



Filling the tank	
-	Open ball valve 1
-	Connect tanker vehicle coupling 2 (alternatively put the nozzle into the aperture)
-	Connect limit indicator 3
-	Fill the tank
Filling construction equipment	
-	Open ball valves 1 + 4
-	Switch on pump 5 (max. power-on time 15 min.)
-	After switching off the nozzle, immediately switch off the pump.
Transport	
-	Prior to transport, close ball valves 1+ 4.
Transport	
-	Check the retention bund on a regular basis using inspection glass 6 and dipstick 7.