

# Operating Instructions Parts List



**TF75 Lift Table**

**Note: Owner and operator MUST read and understand this operating instructions before use this lift table.**

Thank you for using this lift table. Your lift table is made of high quality steel and is designed for the horizontal lifting and transport of loads on a level, fixed base. For your safety and correct operation, please carefully read this instruction before using it and keep it on file for future reference.

**NOTE:** All of the information reported herein is based on data available at the moment of printing. We reserves the right to modify our own products at any moment without notice and incurring in any sanction. So, it is suggested to always verify possible updates.

## **1. WARNINGS**

1. DO NOT put foot or hand in scissors mechanism.
2. DO NOT allow other person to stand in front or behind lift table when it is moving.
3. DO NOT move lift table when table is in raised position. Load could fall down.
4. DO NOT enter under table.
5. DO NOT overload lift table.
6. DO NOT put foot in front of rolling wheels, Injury could fall down.
7. WATCH difference of floor level when moving lift table. Load could fall down.
8. DO NOT use lift table on slope or inclined surface, lift table may become uncontrollable and create danger.
9. DO NOT lift people. People could fall down and suffer severe injury.

## **2. CAUTION**

1. Read this operation manual carefully and understand completely operating lift table. Improper operation could create danger.
2. This lift table is a movable lifter designed to lift or lower rated load on table. DO NOT use lift table for other purpose than its intended use.
3. DO NOT allow person to operate lift table that dose not understand its operation.
4. DO NOT lower table too fast. Load could fall down and create danger.
5. KEEP watching the condition of load. Stop operating lift table if load becomes unstable.
6. Braking lift table when sliding load on or off table.
7. DO NOT side or end load. Load must be distributed on at least 80% of table area.
8. DO NOT use lift table with unstable, unbalanced loosely load.
9. Practice maintenance work according to service instructions.
10. DO NOT modify lift table without manufacturers written consent.
11. REMOVE load from table and use safety stopper to prevent table from lowering when servicing lift table.
12. This lift table is not designed to be water resistant. Use lift table under dry condition.

## **3. DAILY INSPECTION**

Daily inspection is effective to find the malfunction or fault on lift table. Check lift table on the following points before operation .

- (1) Check for scratch, bending or cracking on the lift table.
- (2) Check if there is any oil leakage from the cylinder.
- (3) Check the vertical creep of the table.

- (4) Check the smooth movement of the wheels.
- (5) Check the function of brake.
- (6) Check if all the bolts and nuts are tightened firmly

**CAUTION: DO NOT use lift table if any malfunction or fault is found.**

#### 4. OPERATING LIFT TABLE

##### 4-1. How to use the brake.

**CAUTION: Brake lift when not moving it in order to prevent sudden movement.**

The brake is equipped with the swivel caster on the right side.

- (1) Brake the wheel, press the brake pedal.
- (2) Release the brake, lift up the brake pedal.

##### 4-2. Lifting the table

###### WARNING

- 1. DO NOT overload lift table. Stay within its rated capacity.
- 2. DO NOT side or end. Load must be distributed on at least 80% of table area.

Press the lifting pedal several times until the table reaches the desired position. The table does not elevate after reaching the highest position even if the lifting pedal is pressed. The table lowers slightly after reaching the highest position.

MAXIMUM CAPACITY OF TABLE: 750kg

###### NOTE:

The hydraulic cylinder is designed to hold table. As is the nature of hydraulic system, table lowers very slowly over an extended period of time. Please note the table does not stay at the same position indefinitely.

##### 4-3. Lowering table

**WARNING: DO NOT put foot or hand in scissors mechanism**

- Knob rotating makes table down..

#### 5. Specifications

Model	Capacity (kg)	Table (Mm)	Table Height (mm)	Wheel (Mm)	Weight (Kg)
TF75	750	510X1000	420-900	Φ147	125

#### 6. Service Instructions

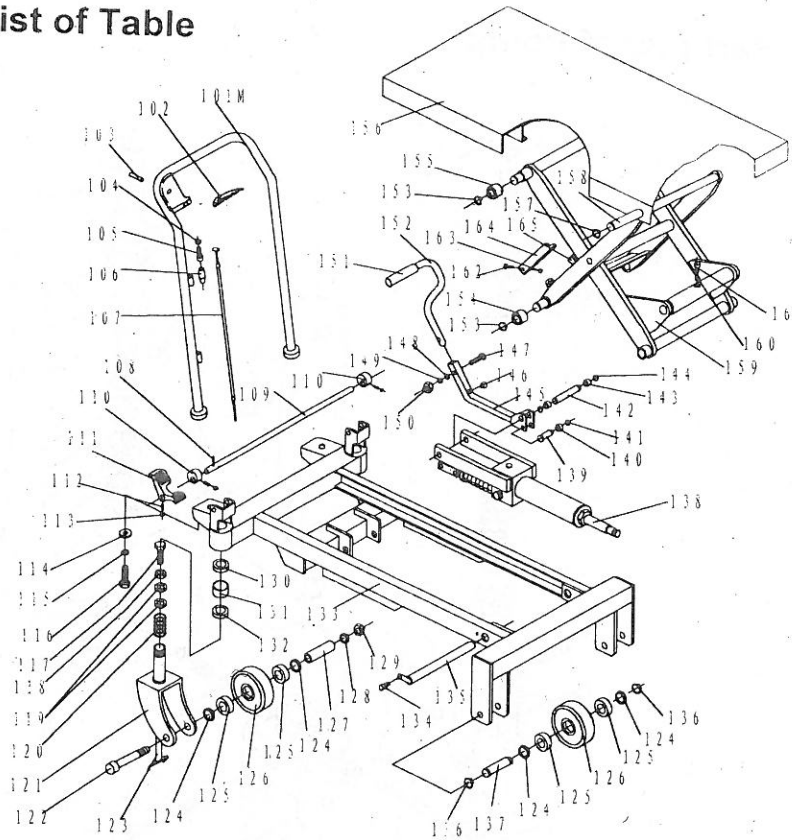
6-1. Lubricate each point described below every month:

6-2. Change hydraulic oil every 12 months.

Lubricating Points

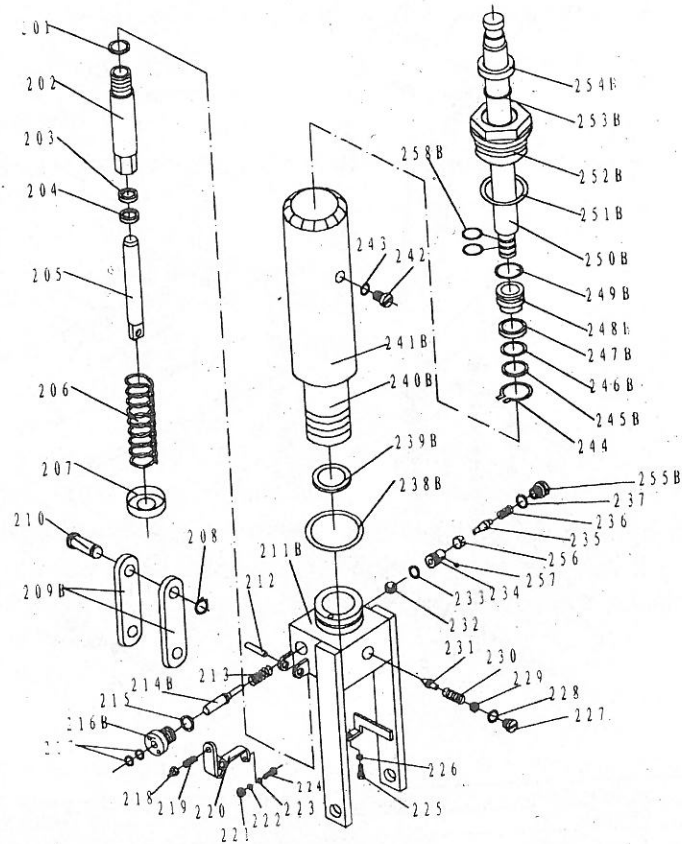
- (1) Fitting of cylinder---Oil
- (2) Roller friction surface---Grease
- (3) Link pin ---Oil
- (4) Pedal fitting point---Oil
- (5) Grease nipple---Grease

## 7. Part List of Table



No	Description	Qty.	No	Description	Qty.
101M	Handle Grip	1	134	Bolt	1
102	Control Handle	1	135	Shaft	1
103	Elastic Pin	1	136	Retaining Ring	4
104	Nut	1	137	Axle of Wheel	2
105	Bolt with Hole	1	138	Pump Unit	1
106	Jacket	1	139	Pin	1
107	Pull Rod	1	140	Roller	1
108	Elastic Pin	1	141	Retaining Ring	1
109	Shaft	1	142	Pin	1
110	Cam	2	143	Washer	2
111	Pedal	1	144	Retaining Ring	2
112	Screw	3	145	Connecting Rod	1
113	Nut	3	146	Cushion	1
114	Big Washer	2	147	Bolt	1
115	Elastic Washer	2	148	Washer	1
116	Bolt	2	149	Elastic Washer	1
117	Bolt	2	150	Nut	1
118	Nut	2	151	Protecting Cover	1
119	Round Nut	4	152	Pedal Bar	1
120	Spring	2	153	Retaining Ring	4
121	Seat of Wheel	2	154	Roller	2
122	Bolt	2	155	Roller	2
123	Brake	2	156	Table	1
124	Washer	4	157	Retaining Ring	2
125	Bearing	8	158	Shaft	2
126	Wheel	4	159	Fork Arm	1
127	Axle	2	160	Elastic Washer	1
128	Elastic Washer	2	161	Screw	1
129	Nut	2	162	Screw	2
130	Bearing	2	163	Nut	2
131	Washer	2	164	Support Plank	2
132	Bearing	2	165	Elastic Pin	2
133	Frame	1			

## 8. Part List of Pump



No	Description	Qty.	No	Description	Qty.
				Spring	1
201	Seal Washer	1	230	Spindle of Safety Valve	1
202	Pump Cylinder	1	231	Steel Ball	1
203	Dust Ring	1	232	O-Ring	1
204	Y - Seal	1	233	Seat of Pumping Valve	1
205	Pump Piston	1	234	Spindle of Pumping Valve	1
206	Spring	1	235	Spring	1
207	Spring Cap	1	236	Seal Washer	1
208	Retaining Ring	1	237	O-Ring	1
209B	Joint Plate	2	238B	Seal Washer	1
210	Pin	1	239B	Cylinder	1
211B	Pump Body	1	240B	Housing	1
212	Elastic Pin	1	241B	Bolt	1
213	Spring	1	242	Seal Washer	1
214B	Strike Pin	1	243	Retaining Ring	1
215	Seal Washer	1	244	Washer	1
216B	Axle Sleeve	1	245B	O-Ring	1
217	O - Ring	2	246B	Cup Packing	1
218	Nut	1	247B	Piston	1
219	Screw	1	248B	O - Ring	1
220	Lever Plate	1	249B	Piston Rod	1
221	Nut	1	250B	O - Ring	1
222	Elastic Washer	1	251B	Cylinder Cap	1
223	Washer	1	252B	O - Ring	1
224	Bolt with Hole	1	253B	Dust Ring	1
225	Bolt with Hole	1	254B	Plug	1
226	Nut	1	255B	Liquid Throttle Sheath	1
227	Plug	1	256	Bolt	1
228	O - Ring	1	257	O - Ring	2
229	Adjusting Bolt	1	258B		