

CADIUM

2012

USER GUIDE

AEC

www.aec.se

User Guide CADIUM 2012

CADIUM 2012 is a very useful product when you automate your scripting or make changes to your title blocks, in CADIUM 2012 known as drawing stamps. There is no need to have AutoCAD installed at your computer to be able to edit the attributes in your drawings!

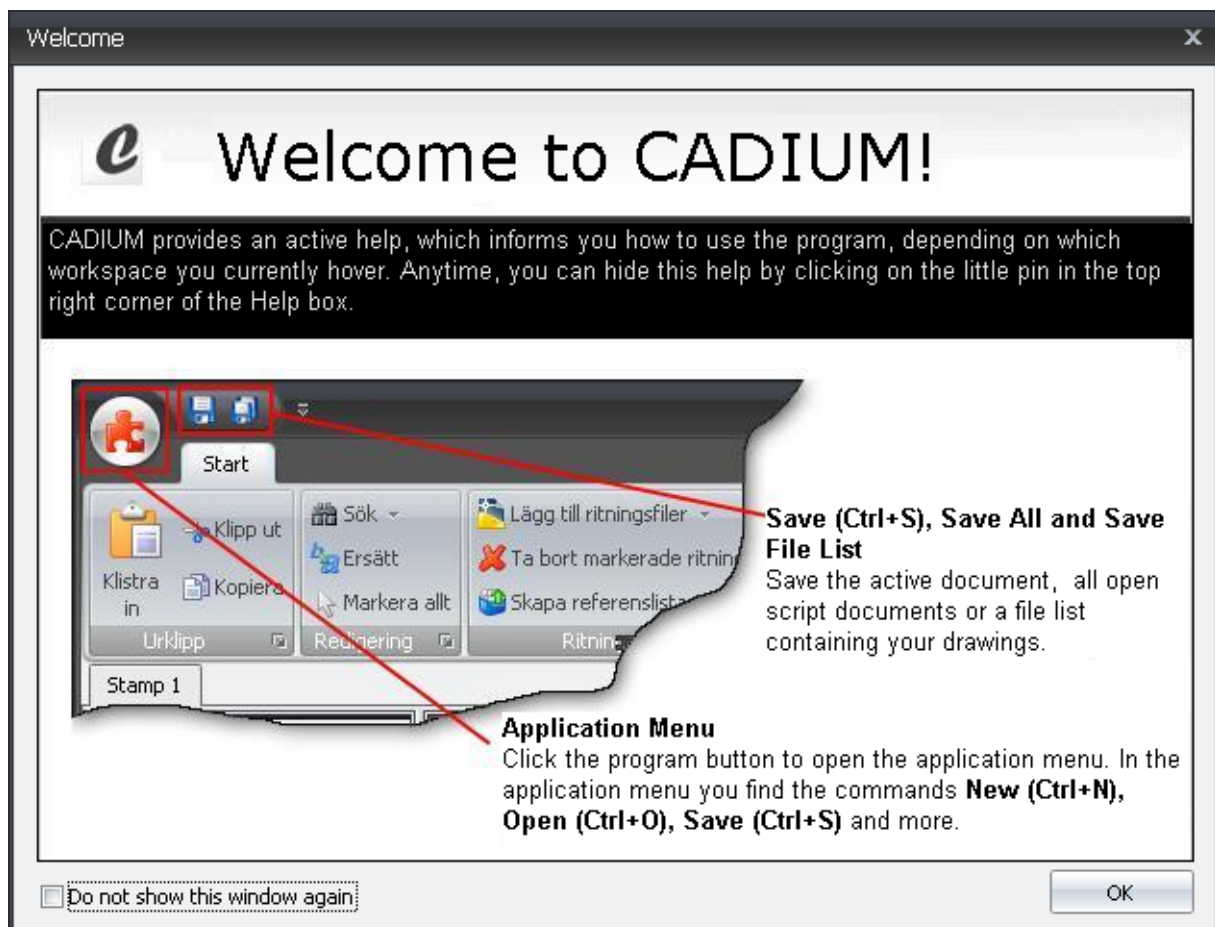
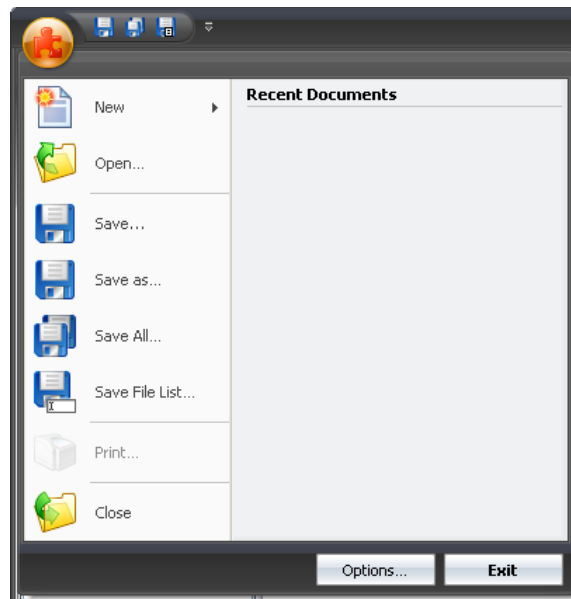










Table of Contents

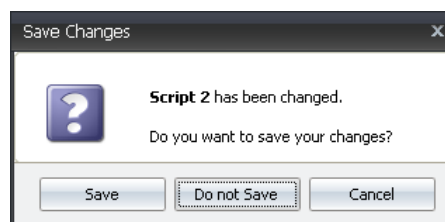
1	Application Menu	3
1.1	New Document Dropdown Menu	4
1.2	Create New Document Dialog	5
1.3	Script Layer Wizard	6
1.4	Options Dialog	8
1.5	Create Profile Wizard	10
2	Quick Access Toolbar	13
2.1	Quick Access Dropdown Menu	13
3	Stamp Documents	13
3.1	Clipboard Panel	13
3.2	Edit Panel	14
3.2.1	Find Dropdown Menu	14
3.3	Drawings Panel	15
3.3.1	Add Drawings Dropdown Menu	15
3.4	Setup Panel	16
3.5	Attributes Panel	16
3.5.1	Copy Cell Downwards Dropdown Menu	17
3.5.2	Export Attribute Data Dropdown Menu	17
3.5.3	Import Attribute Data Dropdown Menu	17
3.6	List Panel	18
3.7	Export to Text File Wizard	18
3.8	Import from XML Wizard	20
3.9	Import from Text File Wizard	23
3.10	Create Drawing List Dialog	25
4	Script Documents	26
4.1	Script Panel	26
5	Drawing List	26
6	Block List	27
7	Attribute List	27
8	Help Dialog	27
9	Status Bar	28
10	Tips & Tricks:	28

1 Application Menu

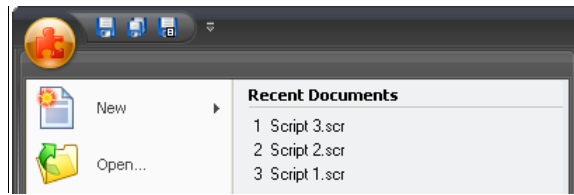
Click the application icon to display available options for the current document.



-  **New** Hover over New to display the New Document dropdown, see Chapter 1.1. Select New to display the Create New Document dialog, see Chapter 1.2.
-  **Open** Select Open to open an existing script (*.scr) or a text file (*.txt).
-  **Save** Select Save to save changes in the current Stamp document to the drawing or to save current Script document for reuse at a later date.
-  **Save As** Select Save As to save or rename the current Script document.
-  **Save All** Select Save All to save all open Script documents.
-  **Save File List** Select Save File List to create a file list (*.txt) containing paths for all drawings in the current document.
-  **Print** The Print option is currently not enabled.
-  **Close** Select Close to close the current document. If the document has been changed, there is an option to save it.



Recent documents The Recent Documents list displays the 15 last used documents.

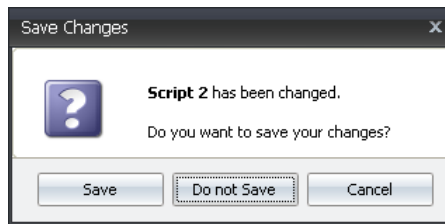


Options...

Options Select Options to display the Options dialog, see Chapter 1.4.

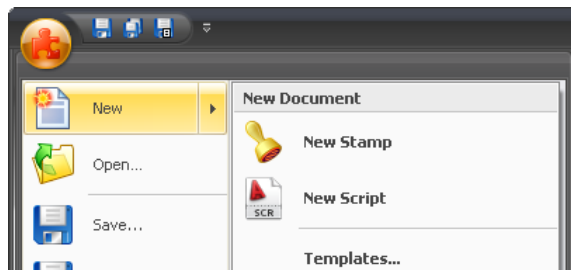
Exit

Exit Select Exit to close CADIUM 2012. If the documents have been changed, there is an option to save them.



1.1 New Document Dropdown Menu

The New Document dropdown menu displays options to create a new Stamp or Script document, the latter optionally from a script template.



 **New Stamp** Hover New and select New Stamp to create a new Stamp document, to edit attributes in your drawing stamps.

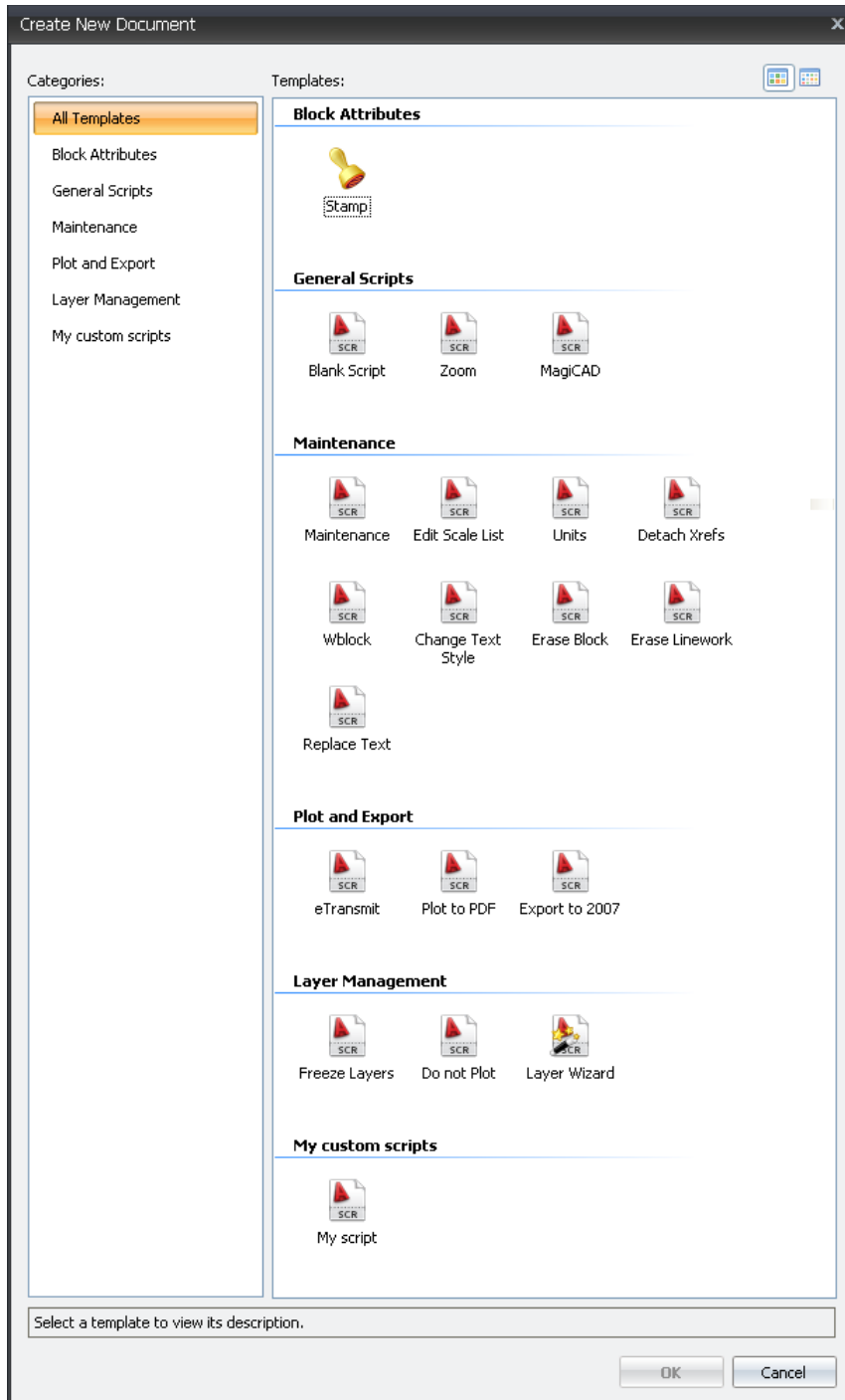


New Script Hover New and select New Script to create a new Script document, including nothing but a trailing QSAVE.

Templates Hover New and select Templates to create a new document from a template, see Chapter 1.2.

1.2 Create New Document Dialog

In the Create New Document dialog you have an option to create a new Stamp or Script document. Use one of the predefined script templates as a start for your new script. Filter the template list by selecting a relevant category in the left-hand list.



Select a template to display a description below the template list. You could also copy the content from several different templates to form your custom script. Use the Layer Wizard to create scripts based on existing drawings, see Chapter 1.3.

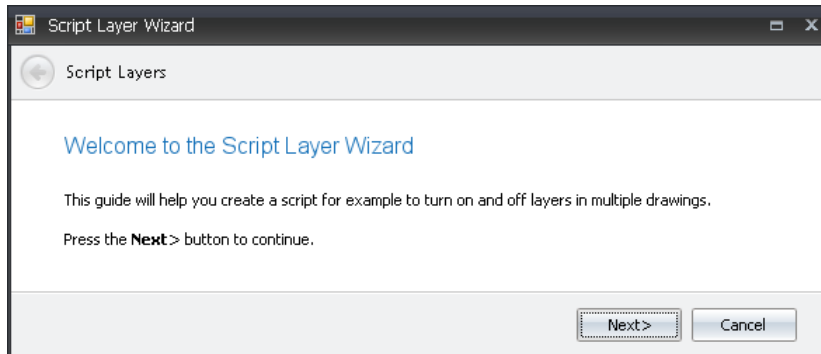
1.3 Script Layer Wizard



The Script Layer Wizard assists in creating a layer script based on an existing drawing. Select the Layer Wizard template in the Create New Document dialog.

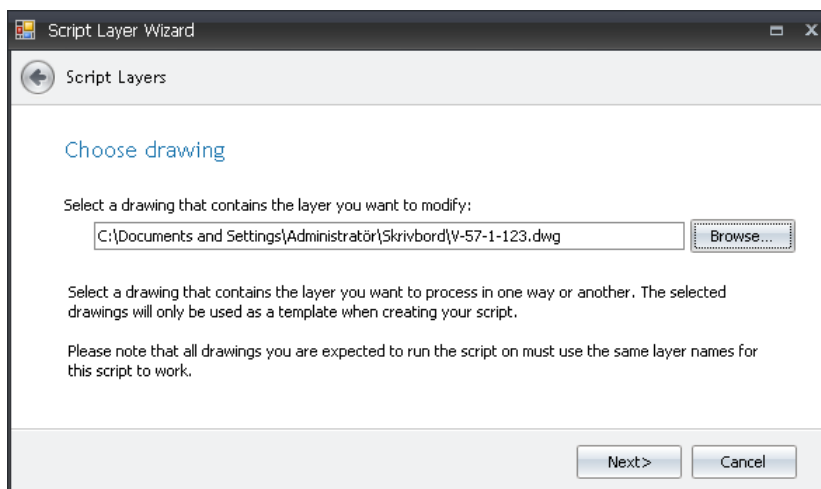
Welcome to the Script Layer Wizard

Click Next to select drawing.



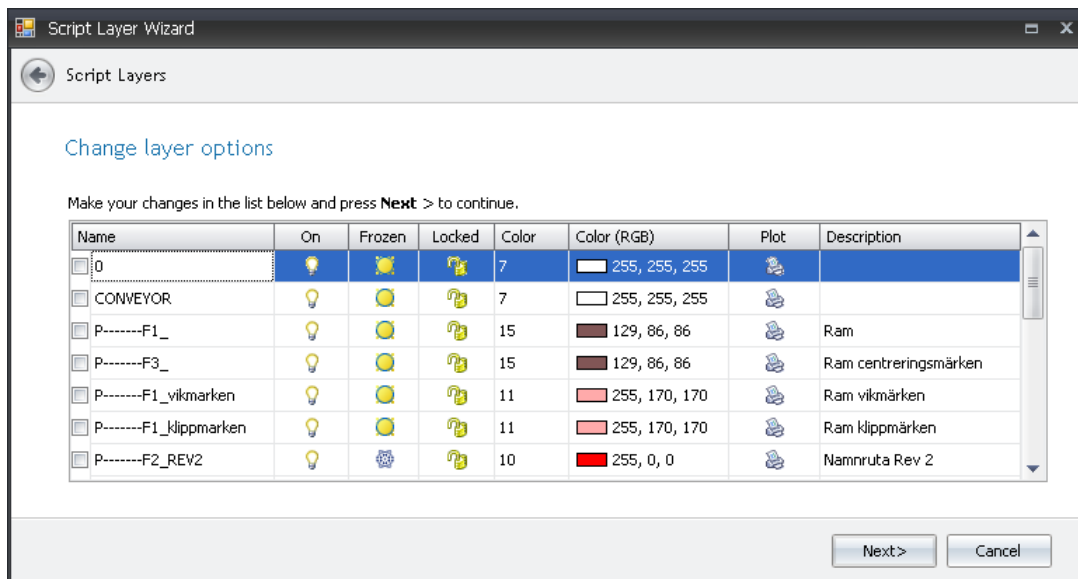
Select drawing

Click Browse to select a drawing containing the layers you wish to modify. Click Next to change layer options.



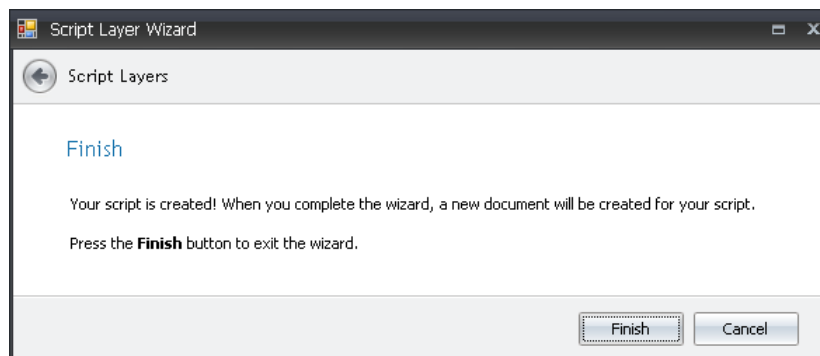
Change layer options

Change the layer properties that should form your script. Currently the following layer settings are editable: Name, On, Frozen, Locked, Color, Color (RGB), Plot and Description. Click Next to finish.



Finish

Click Finish to create a script that executes the changes made in the guide.

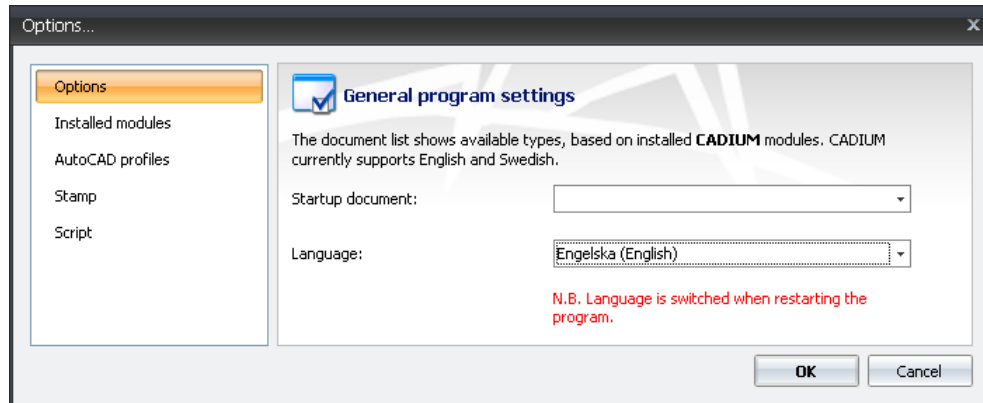


N.B. The Script Layer Wizard is resizable. Thus all properties are visible without the need to scroll.

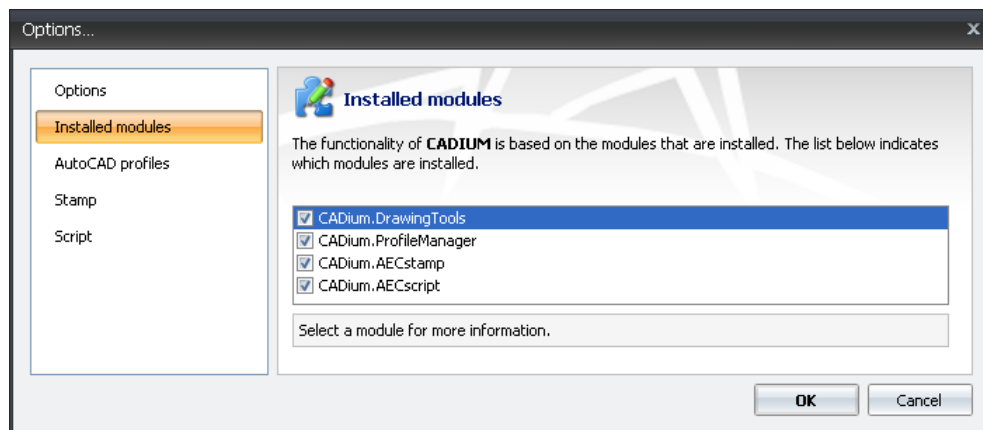
1.4 Options Dialog

The Options dialog is used to configure the behavior of CADIUM 2012. Click the application icon and select Options.

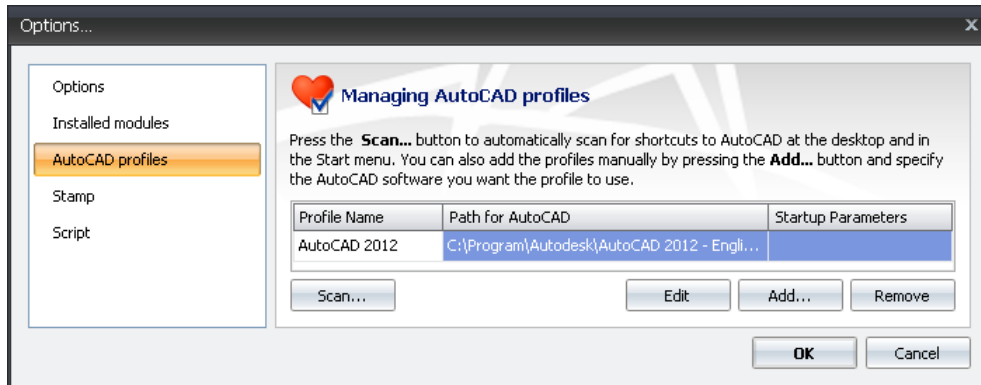
Options Select Options to configure general software settings such as startup document and language setting. There are options to start CADIUM 2012 without a document, with a Stamp or a Script document. Currently CADIUM 2012 supports English and Swedish language settings. N.B. The Sheet List functionality follows the Swedish Standards regardless of the language settings.



Installed modules Select Installed modules to detect installed CADIUM modules. Select a module to display more information below the module list.

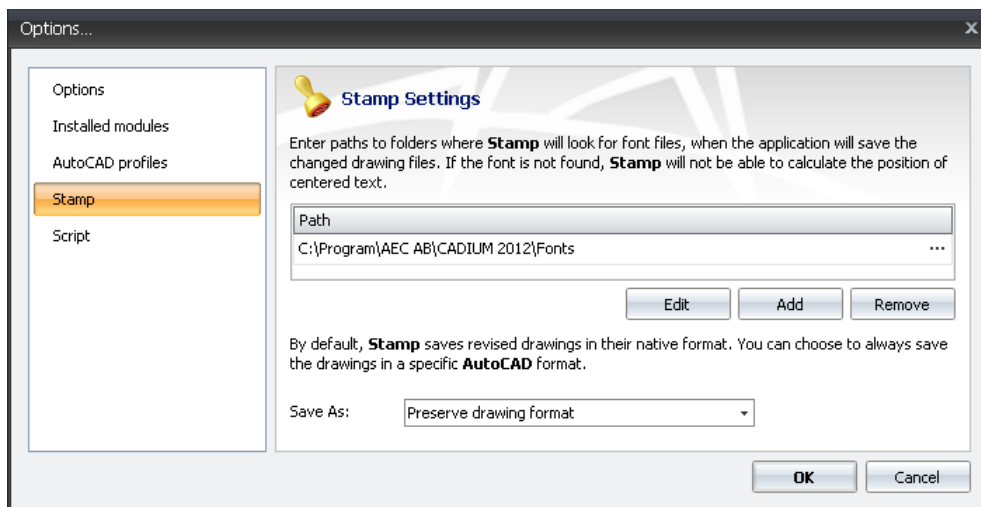


AutoCAD profiles Select AutoCAD profiles to manage AutoCAD profiles. Click Scan to scan your desktop and Start menu for shortcuts to acad.exe. The profile name is derived from the description of the shortcut. Click Add to launch a guide to create your own profiles by selecting an acad.exe file or an existing shortcut, see Chapter 1.5.



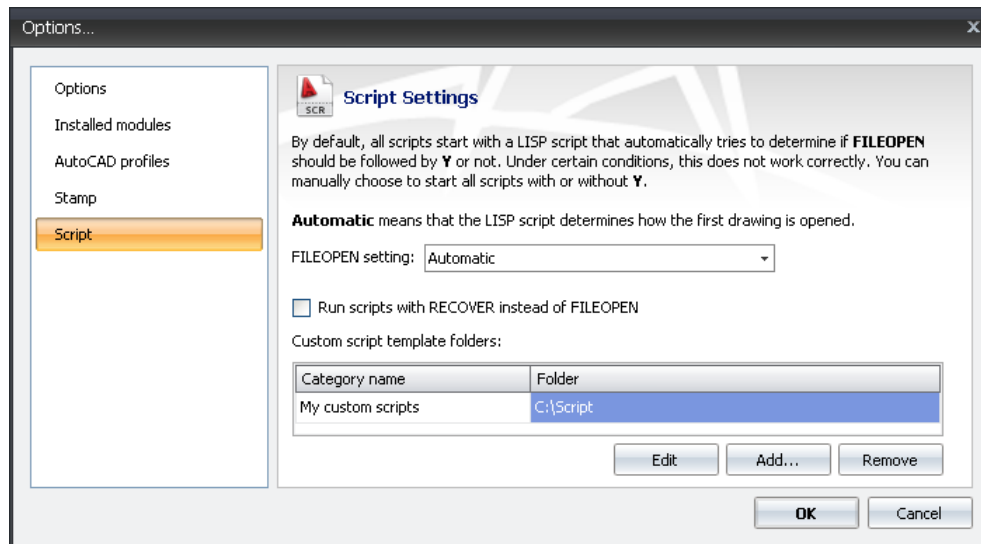
Stamp Select Stamp to manage the Stamp settings. CADIUM 2012 installs a folder containing AutoCAD fonts, whose path is predefined in the settings. Select Add to specify your own paths for other folders containing fonts. If the path is not specified, CADIUM 2012 cannot properly calculate the insertion point of centered texts using these fonts.

By default, CADIUM 2012 preserves the drawing format, but there are options to select a specific AutoCAD drawing format.



Script Select Script to manage the Script settings. By default, CADIUM 2012 opens drawings by automatically determining if FILEOPEN should be followed by a Y or not. If the software is not able to determine this setting, you have to manually select if FILEOPEN should be followed by a Y or not. There is also an option to run the scripts with RECOVER instead of FILEOPEN.

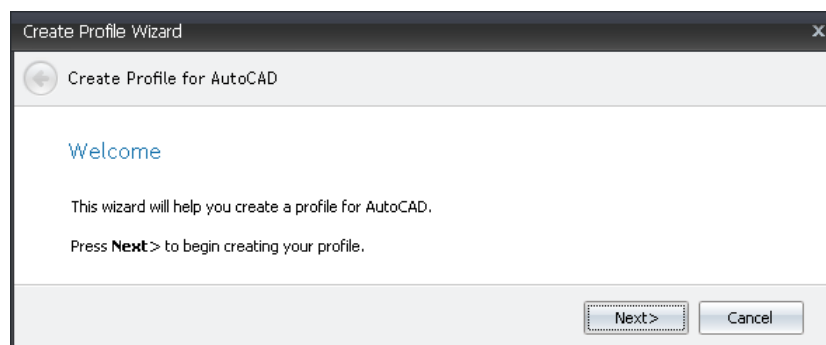
Select Add to add your custom script template folders, and you will easily access the script templates via New – Templates and the Create New Document dialog, see Chapter 1.2.



1.5 Create Profile Wizard

The Create Profile Wizard will assist in creating an AutoCAD profile to be used when scripting.

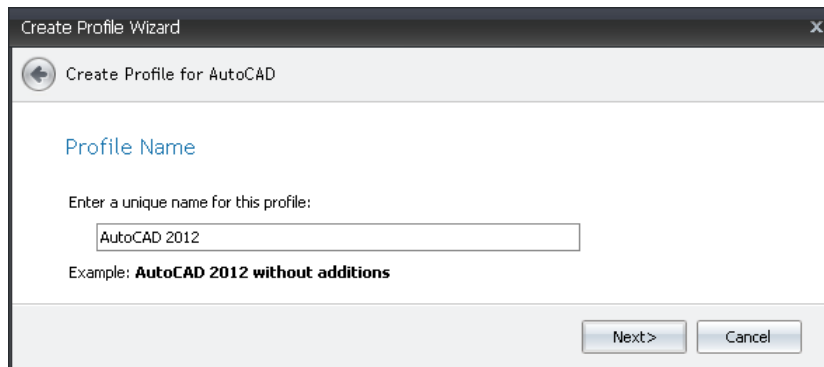
Welcome



Click Next to enter a profile name.

Profile Name

Enter a unique name for the profile.

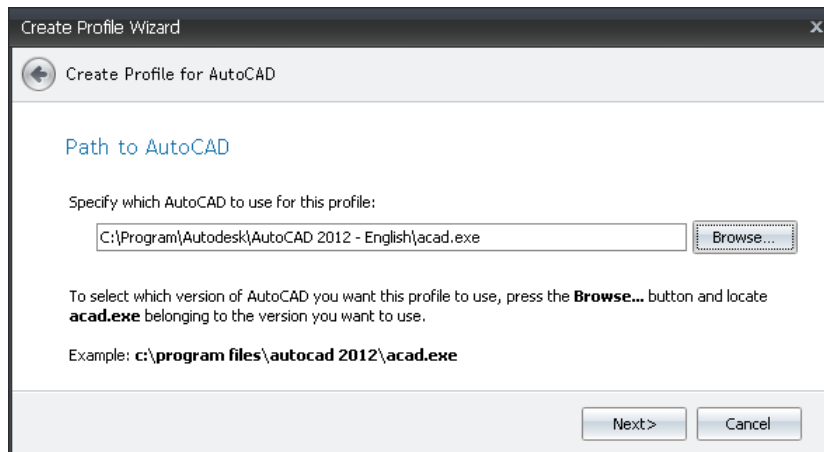


The screenshot shows the 'Create Profile Wizard' dialog box with the title 'Create Profile for AutoCAD'. The current step is 'Profile Name'. It contains a text input field with 'AutoCAD 2012' entered. Below the field is an example: 'Example: **AutoCAD 2012 without additions**'. At the bottom right are 'Next >' and 'Cancel' buttons.

Click Next to enter a path to AutoCAD.

Path to AutoCAD

Select Browse to associate an acad.exe file with the profile.

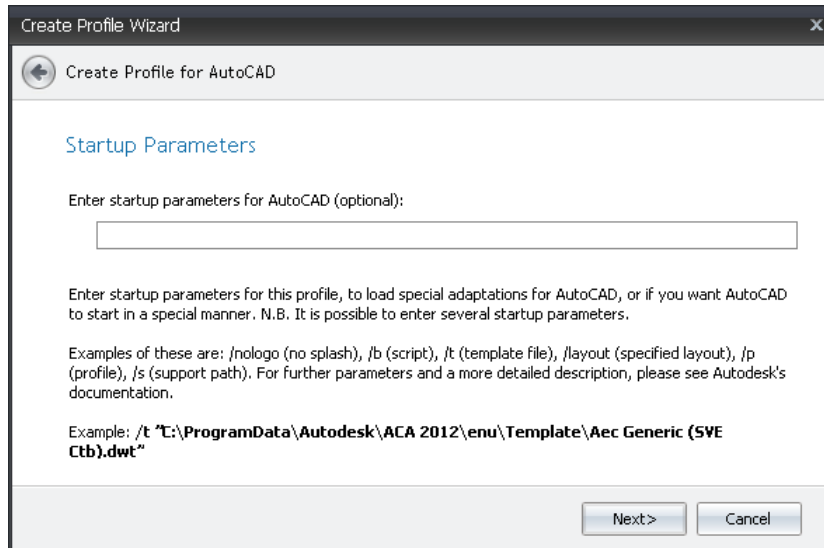


The screenshot shows the 'Create Profile Wizard' dialog box with the title 'Create Profile for AutoCAD'. The current step is 'Path to AutoCAD'. It contains a text input field with 'C:\Program\Autodesk\AutoCAD 2012 - English\acad.exe' entered. To the right of the field is a 'Browse...' button. Below the field is an example: 'Example: c:\program files\autocad 2012\acad.exe'. At the bottom right are 'Next >' and 'Cancel' buttons.

Click ← to change profile name or Next to enter the startup parameters.

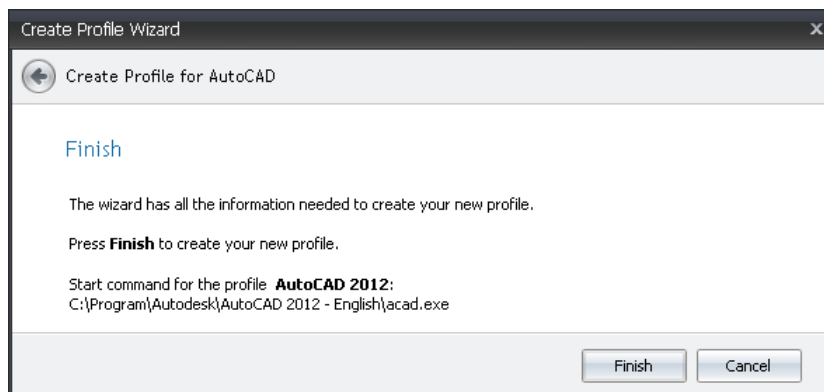
Startup Parameters

Enter the startup parameters to use with your profile. Examples of these are: /nologo (no splash), /b (script), /t (template file), /layout (specified layout), /p (profile), /s (support path). For further parameters and a more detailed description, please see Autodesk's documentation.



Click ← to change path or Next to finish.

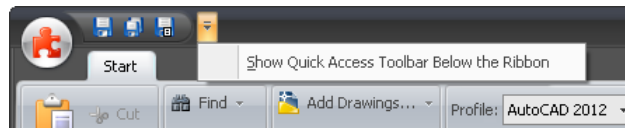
Finish






Click ← to change startup parameters or Finish to end the wizard.

2 Quick Access Toolbar

The Quick Access Toolbar contains shortcuts to certain functions, and enables the tools available for the current document.



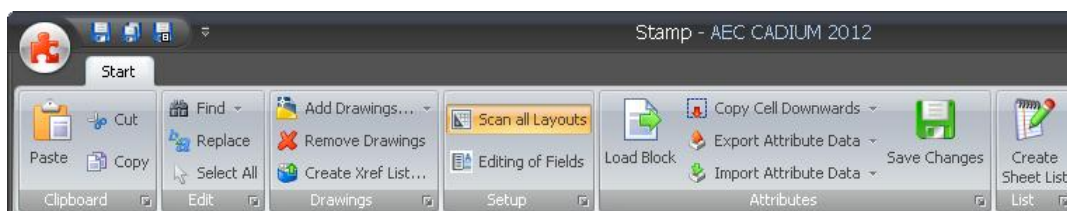
-  **Save** Select Save to save changes in current Stamp document to the drawing or to save the current Script document for reuse at a later date.
-  **Save All** Select Save All to save all open Script documents.
-  **Save File List** Select Save File List to create a file list (*.txt) containing paths for all drawings in the current document.

2.1 Quick Access Dropdown Menu

Select if the Quick Access Toolbar should be displayed above or below the ribbon.

3 Stamp Documents




The Stamp module is used to edit attributes in drawing stamps. Select a block to edit its attribute data will display for all layouts and drawings in a project. Standard functionality to cut/paste and search/replace is supplemented with options to copy cells or paste series downwards.



3.1 Clipboard Panel

The Clipboard panel contains standard tools to copy, paste and cut data.





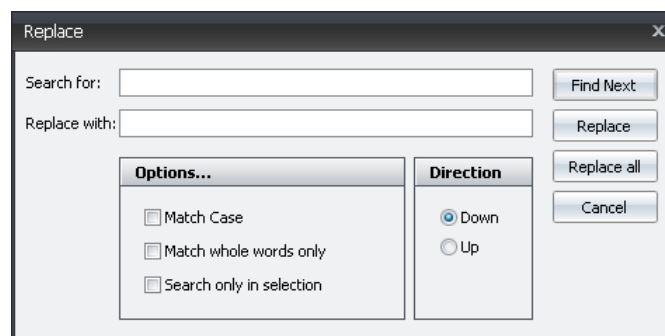
-  **Paste** Select Paste to paste copied data from the Clipboard.
-  **Cut** Select Cut to place data on the Clipboard.
-  **Copy** Select Copy to place data on the Clipboard.


3.2 Edit Panel

The Edit panel contains tools to search, replace and select all.

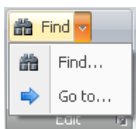



-  **Find** Select Find to display the Find dropdown menu, see Chapter 3.2.1.
-  **Replace** Select Replace to search for specified text and replace it in current document. Optionally, select if the search should match case or whole words only. Specify search direction and select if the search should be limited to selected cells. The Replace dialog is not modal, thus you can modify the document while the dialog is still open.

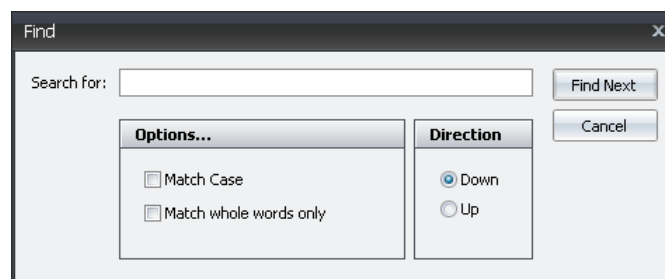


-  **Select All** Select Select All to highlight the entire content of the current document.

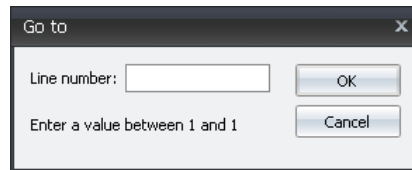
3.2.1 Find Dropdown Menu



-  **Find** Select Find to search for specified text in current document. Optionally, select if the search should match case, whole words only and specify search direction. The Find dialog is not modal, thus you can modify the document while the dialog is still open.






- ➔ **Go to** Select Go to in order to select an entire row in current document.



3.3 Drawings Panel

The Drawings panel contains tools to manage the drawings processed in i CADIUM 2012.






-  **Add Drawings** Select Add Drawings to display the Add Drawings dropdown menu, see Chapter 3.3.1.
-  **Remove Drawings** Select Remove Drawings to remove the selected drawings from the Drawing List.
-  **Create Xref List** Select Create Xref List to save a tab separated text Xref list (*.csv) containing drawing names, Xref names, paths and reference type for all drawing in current document.

3.3.1 Add Drawings Dropdown Menu

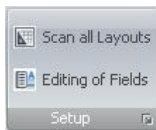
The Add Drawings dropdown menu contains tools to add drawings to the Drawing List.





-  **Add Drawings** Select Add Drawings to select one or more drawings to add to the Drawing List.
-  **Add Folder** Select Add Folder to add all drawings from selected folder to the Drawing List.
-  **Add File List** Select Add File List to select a file list containing drawings to add to the Drawing List.

3.4 Setup Panel

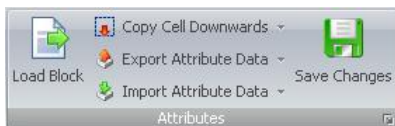
The Setup panel contains general settings concerning management of drawing attributes.




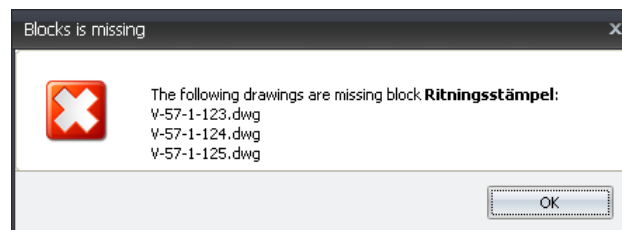
-  **Scan All Layouts** Toggle Scan All Layouts to set if current layout or all layouts should be scanned for block to display in the Block List and Attribute List. This option is enabled by default in CADIUM 2012.
-  **Editing of Fields** Toggle Editing of Fields to set if editing of fields should be enabled. Editing of fields is not recommended, and this option is disabled by default in CADIUM 2012.

3.5 Attributes Panel





The Attributes panel contains tools to edit and manage drawings attributes.



-  **Load Block** Select Load Block to load the selected block from the Block List to the Attribute List. A warning is displayed if any of the drawings in the Drawing List does not contain the selected block.

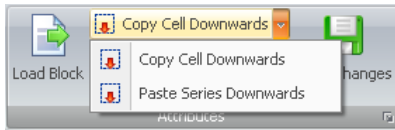




N.B. By double-clicking a block in the Block List, it will be loaded to the Attribute List.

-  **Copy Cell Downwards** Select Copy Cell Downwards to display the Copy Cell Downwards dropdown menu, see Chapter 3.5.1.
-  **Export Attribute Data** Select Export Attribute Data to display the Export Attribute Data dropdown menu, see Chapter 3.5.2.
-  **Import Attribute Data** Select Import Attribute Data to display the Import Attribute Data dropdown menu, see Chapter 3.5.3.
-  **Save Changes** Select Save Changes to save the changed attribute data to the drawings.

3.5.1 Copy Cell Downwards Dropdown Menu

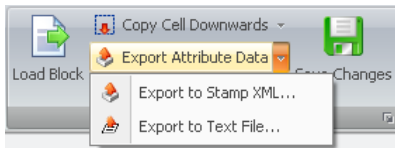
The Copy Cell Downwards dropdown menu contains tools to copy cells and paste series.





-  **Copy Cell Downwards** Select Copy Cell Downwards to copy the uppermost selected cells in the selection to the selected cells below.
-  **Paste Series Downwards** Select Paste Series Downwards to copy the uppermost selected cells in the selection to the selected cells below, while updating trailing numbers.

3.5.2 Export Attribute Data Dropdown Menu

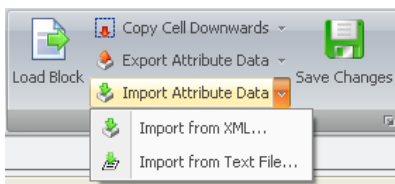
The Export Attribute Data dropdown menu contains tools to export to Stamp XML and text file.





-  **Export to Stamp XML** Select Export to Stamp XML to export attribute data to a Stamp XML file (*.xml).
-  **Export to Text File** Select Export to Text File to export attribute data to a text file (*.txt). The Export to Text File Wizard configures the setup, see Chapter 3.7.

3.5.3 Import Attribute Data Dropdown Menu


The Import Attribute Data dropdown menu contains tools to import from XML and text files.



-  **Import from XML** Select Import from XML to import data from an XML file (*.xml). The Import from XML Wizard configures the setup, see Chapter 3.8.
-  **Import from Text File** Select Import from Text File to import data from a text file (*.txt) or a comma separated textfile (*.csv). The Import from Text File Wizard configures the setup, see Chapter 3.9.

3.6 List Panel

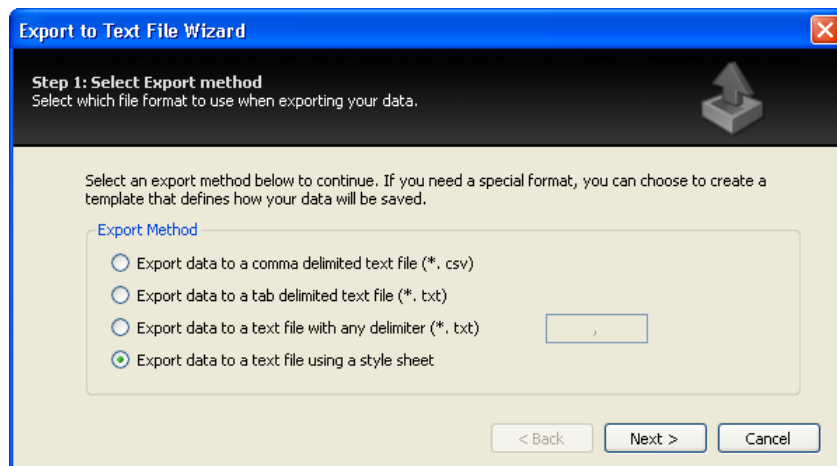


 **Create Sheet List** Select Create Sheet list to create a sheet list in Excel. In the Create Drawing List dialog, the sheet list is configured using the attributes of the loaded drawings. The predefined sheet list follows the Swedish Standards.

3.7 Export to Text File Wizard

Step 1 Select export method

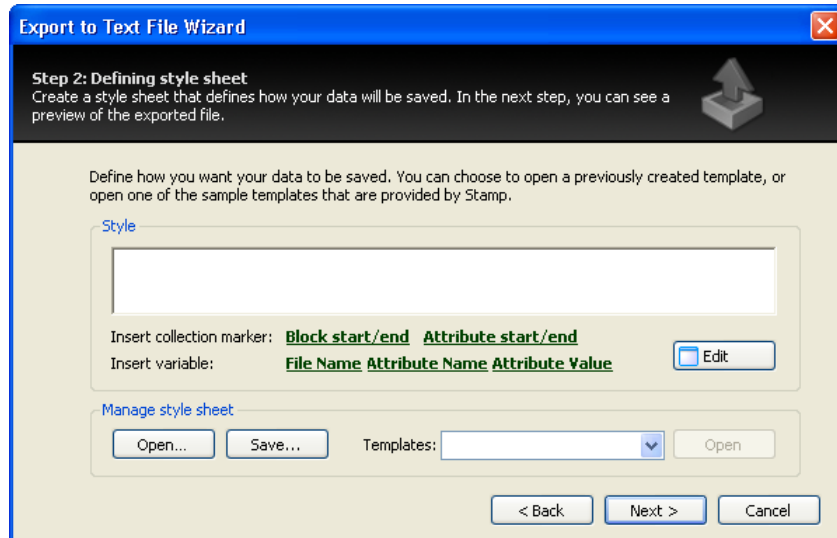
Select one of the predefined formats or use a custom format.



Click Finish if any of the three predefined formats has been selected or Next to define a style sheet.

Step 2 Define a style sheet

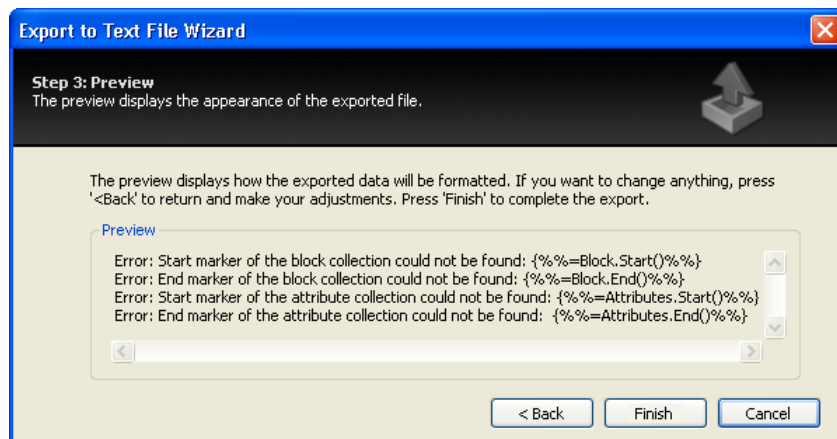
Define a custom style sheet with the options to insert collection marker (Block Start/End and Attribute Start/End) and variable (File Name, Attribute Name and Attribute Value). Click Edit to display the style sheet in a separate editor. Click Open to open an existing style sheet and Save to save an edited ditto. The Templates option is currently not enabled.



Click Back to change export method or Next to preview the style sheet.

Step 3 Preview

The preview shows the layout of the data to be exported and displays if the style sheet contains any error.



Click Back to redefine the style sheet or Finish to carry out the export.

3.8 Import from XML Wizard

Step 1 Import options

Click Browse to select an XML file to import. It is possible to import XML files created by other programs than CADIUM 2012. Select [Click here to display more import options](#).

The import settings allows you to configure collection node, block node, attribute element, attribute name and attribute value.

Import from XML Wizard

Step 1: Import Options
Specify from which file your data should be imported and how it should be imported.

File name: C:\Documents and Settings\Administratör\Skrivbord\CADIUM 2012.xml

Import Settings

Collection node:
Collection node is the node that contains all block nodes.

Block node:
Block node is the node containing the attribute element.

Attribute Element: Missing Has attributes

Attribute Name: Is an element

Attribute Value: Is an element

The wizard will look for the following elements:

```
<Blocks>
  <Block source="filename.dwg" layout="layout name">
    <Attribute name="Attribute Name"
      value="Attribute Value" />
  </Block>
</Blocks>
```

Click Next to define source name.

Step 2 Source

Select if data should be imported to a file using the same name as the source file or if data should be imported in the order they occur in the XML file. Select the [Click here](#) link to display more import options, and configure the settings to identify the source name.

Import from XML Wizard

Step 2: Source
Define how the source file name is specified in the XML file. If you import a Stamp XML file, press 'Next>' when you have decided how your data should be imported.

The following settings allow you to determine how the import of data will be performed. You can choose to import data to a file using the same name as the source, or import data in the target files in the order in which items appear in the XML file.

Import Settings

Data is imported to a file using the same name as the source file
 Data is imported in the order they occur in the XML file

What identifies the source name in the XML file?

Elements: Attribute Name:
The name of the element or the node that contains the source name

Attribute Name: Attribute Name:
If the source name is not specified in an attribute, leave this field blank

The wizard will look for the following elements:

```
<Blocks>
  <Block source="filename.dwg" layout="layout name">
    ...
  </Block>
</Blocks>
```

N.B. Data is not saved until you press 'Save Changes' in the main window, just as usually when modifying a block. This means that if the result is not as expected, it is easy to start over and redo the process.

< Back Next > Cancel

Click Back to change import options or Next to analyze data and define target attributes.

Step 3 Define target attributes

Define how imported data will be linked to target attributes.

Import from XML Wizard

Step 3: Define the target attribute
Define links between source data and target attribute

Choose values from the XML file to be inserted under each attribute in the target drawings.

Define the import of data

Import 'INRAD1' to attributes:

Import 'INRAD2' to attributes:

Import 'INRAD3' to attributes:

Import 'SKALA' to attributes:

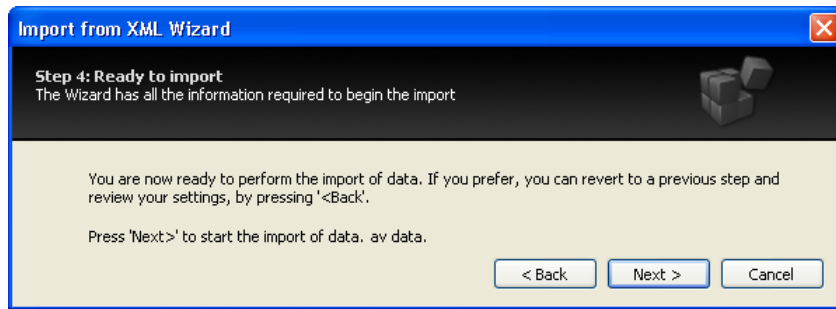
Import 'RITNR' to attributes:

Import 'ANDBET' to attributes:

< Back Next > Cancel

Click Back to redefine source name or Next to proceed.

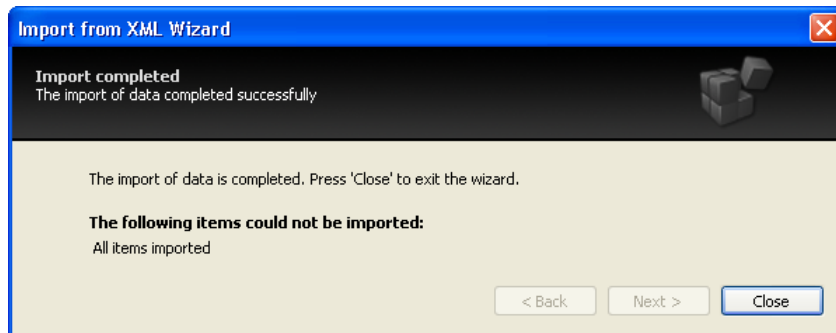
Step 4 Ready to import



Click Back to redefine target attributes or next to perform the import.

Import completed

The software displays if any items could not be imported.



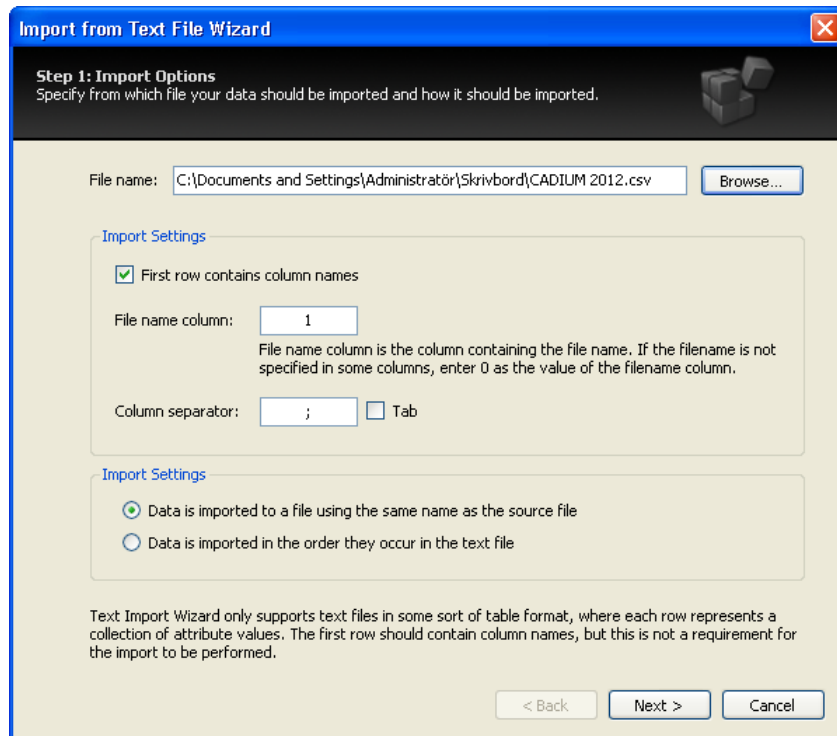
Click Close to close the dialog.

N.B. Attribute data is not saved until you click Save Changes in the main window, just as usual when modifying a block in CADIUM 2012. This is convenient if the imported data somehow is corrupt.

3.9 Import from Text File Wizard

Step 1 Import options

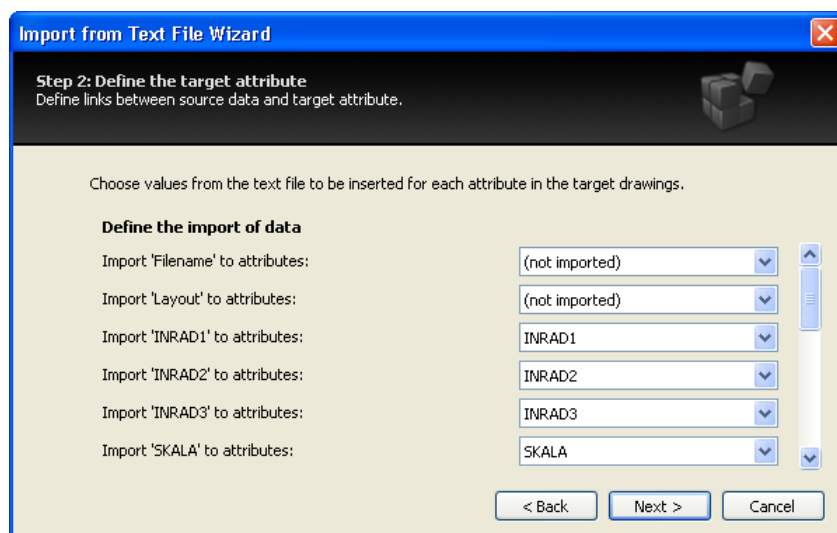
Click Browse to select an XML file to import. CADIUM 2012 supports text files (*.txt) and comma separated text files (*.csv). Select if data should be imported to a file using the same name as the source file or if data should be imported in the order they occur in the XML file.



Click Next to analyze data and define target attributes.

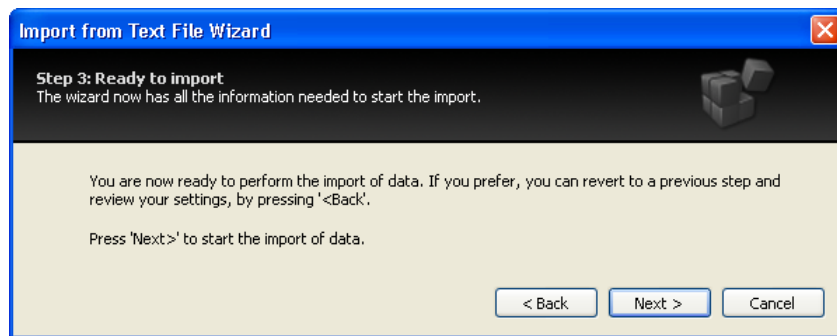
Step 2 Define target attributes

Define how imported data will be linked to target attributes.



Click Back to change import options or Next to import.

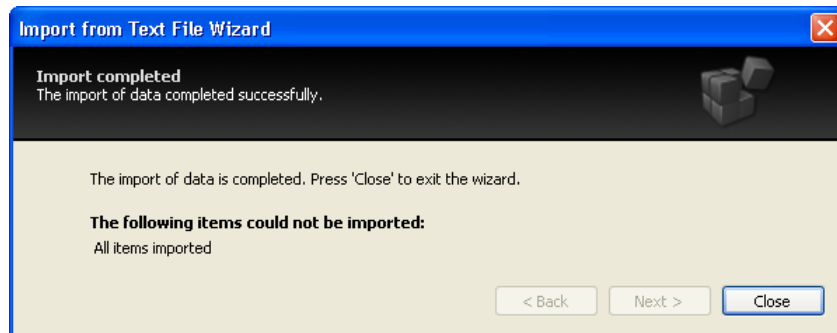
Step 3 Ready to import



Click Back to redefine target attributes or next to perform the import.

Import completed

The dialog displays if any items could not be imported.



Click Close to close the dialog.

N.B. Attribute data is not saved until you click Save Changes in the main window, just as usual when modifying a block in CADIUM 2012. This is convenient if the imported data somehow is corrupt.

3.10 Create Drawing List Dialog

Select attribute values to assign to each field in the sheet list. Available fields are Drawing number, Revision, Content 1, Content 2, Content 3, Content 4, Scale, Drawing date and Revision date. Drag company logotype to the sheet list and drop it in the upper left corner. Enter Uppdrag (Assignment), Uppdragsnummer (Assignment Number), Signatur (Signature), Status (Status), Datum (Date) and Senaste ändring (Last Revision).

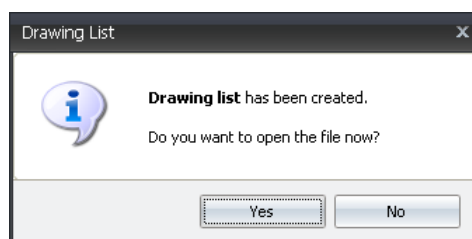
There are four options to configure Drawing Content (Ritningens innehåll). The preview displays the outcome of the generated sheet list.

N.B. The Sheet List functionality follows the Swedish Standards regardless of the language settings.

RITNINGSFÖRTECKNING					
UPPDRAG CAD IUM 2012			UPPDRAG NR 123		
STATUS Byggtidning			SIGN AEB		SENASTE ÄNDRING 12-01-09
RITNINGNUMMER	REV	RITNINGENS INNEHÅLL	SKALA	RITNINGSDATUM	REVIDERINGSDATUM
V-67-1-123		Innehåll 1, Innehåll 2, Innehåll 3	1:50	2011-12-12	
V-67-1-124		Innehåll 1, Innehåll 2, Innehåll 3	1:20	2011-12-12	
V-67-1-126		Innehåll 1, Innehåll 2, Innehåll 3	1:20	2011-12-12	

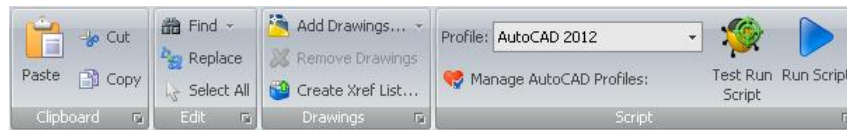
Click Save to save your settings for reuse at a later date. The file is by default named by the assignment (uppdrag). Click Open to open an existing setting file (*.cadium).

Click Create to create a sheet list in Excel (*.xlsx). Upon creating, you have an option to open the file in Excel.



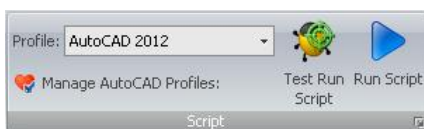
4 Script Documents

The Script module is used to script drawings. The Clipboard, Edit and Drawings panels are described in Chapter 3.1 – 3.3.

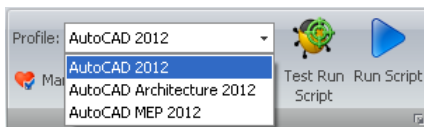





4.1 Script Panel

The Script panel contains settings to run scripts.



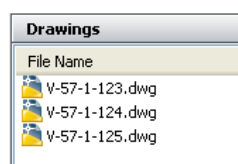
Profile Select the AutoCAD profile to use when running your script. Please notice, it is not recommended to use a MagiCAD profile. Instead it is recommended to use an AutoCAD profile and load MagiCAD via the script, see the installed MagiCAD script template.



-  **Manage AutoCAD profiles** Select Manage AutoCAD profiles to launch the Options dialog, with the AutoCAD profiles alternative selected.
-  **Test Run Script** Select Test Run Script to verify the script is correct. The script is run using the first two drawings in the Drawing List, which are copied to a temporary folder. Thus, the original files remain unchanged.
-  **Run Script** Select Run Script to execute the script at all drawings in the Drawing List.

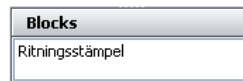
5 Drawing List

The Drawing List is displayed for Stamp and Script documents. It displays all drawings loaded in the current document. Add drawings to the Drawing List by using Add Drawings, Add Folder or Add Drawing List from the Drawings panel. You could also drag and drop drawings to the Drawing List. By double-clicking a drawing in the Drawing List, it will be opened in the last used AutoCAD.



6 Block List

The Block List is displayed for Stamp document. It displays all blocks in selected drawing in the Drawing List. By double-clicking a block, it will be loaded in the Attribute List.

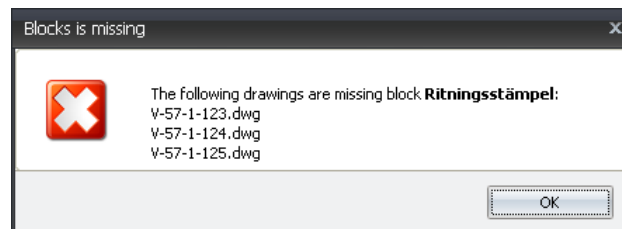


7 Attribute List

The Attribute List is displayed for Stamp documents. It displays attributes of the block loaded from the Block list. To load blocks to the Attribute List, select Load Block from the Attributes panels or double-click the block in the Block List. All drawings containing the selected block will be loaded from the Drawing List. If Scan All Layouts is enabled, then attributes from all layouts in all drawing will be displayed.

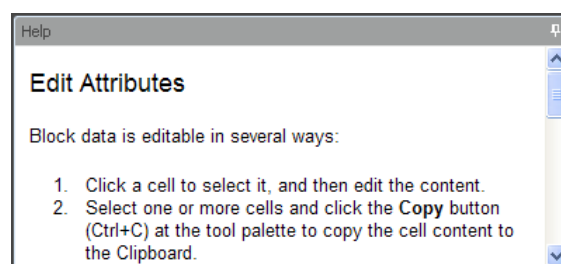
	Layout	Skala SKALA	Ritningsnummer RITNR	Ändringsbeteckning ANDBET	Uppdrag nr UPPDRNR	Ritad/konstr av RITAD	Handläggare HANDL	Datum DATUM
V-57-1-123	A2 Liggande	1:50	V-57-1-123		1234	Erik Magnusson	Björn Hult	2011-12-12
V-57-1-123	A1 Liggande	1:20	V-57-1-123		1234	Erik Magnusson	Björn Hult	2011-12-12
V-57-1-123	A1L Liggande	1:20	V-57-1-123		1234	Erik Magnusson	Björn Hult	2011-12-12

A warning is displayed if some of the drawings do not contain the selected block.



8 Help Dialog

The Help dialog is dynamic and updates depending on which area is hovered in CADIUM 2012. The Help could be docked at any of the sides of the CADIUM 2012 main dialog. It can also be pinned or auto-hidden.



9 Status Bar

The Status Bar reflects the software status. Common messages are; the drawing is loaded or saved, blocks are loaded and the Attribute List should be updated. In normal state the Status Bar displays Ready.



Loading C:\Documents and Settings\Administratör\Skrivbord\W-57-1-123.dwg...

10 Tips & Tricks:

- **Attribute Name** Make sure the drawing stamps do not contain multiple attributes (tags) using the same name. Those blocks are displayed in the Block and Attribute Lists, but the attributes cannot be edited. Such attributes are highlighted in red in the Attribute List.
- **Attribute Location** If your attributes change locations after being updated with the Stamp module, this is because the path for the used font is missing in CADIUM. Add the folder containing the font, by specifying its path in the Stamp Settings, see Chapter 1.4.
- **Old Scripts** Old scripts from CADium 2010 might need to be updated with a final Enter as CADium 2010 automatically added an Enter. This behavior has changed in CADIUM 2012 to make it possible to use the very same scripts in both CADIUM 2012 and AutoCAD.
- **MagiCAD** When scripting in MagiCAD, make sure to use the installed MagiCAD script template as a start of your script and to use an AutoCAD profile. The reason is that both CADIUM 2012 and MagiCAD tries to use a startup script in AutoCAD, which is not supported by the application. N.B. The template shows an example of how to load MagiCAD, and must be adjusted for your installation of MagiCAD.
- **Trouble Shooting** If your script does not work, please examine it as following:
 - 1) Start AutoCAD with a drawing and drag your script (*.scr) to the drawing area in AutoCAD. If the script does not work in AutoCAD, it will not work in CADIUM 2012 either.
 - 2) Run short sequences of your script. It is also possible to exclude script sequences, by adding a semi-colon (;) at the start of these lines.
 - 3) Step through your script in AutoCAD. Enter the commands you use in your script at the command line. The script will halt if you enter an option in your script, which is not available at the command line.
 - 4) Please notice that a space equals an Enter. It is often hard to detect if a script line is finished with a space or not. Thus, make a practice of never finishing your script lines with a space, even if the script requires consecutive Enter commands.

CADIUM

2012

You can find the latest version of CADIUM at www.aec.se

For more information, please visit our webpage www.aec.se
CADIUM support: +46 10 850 20 20, support@aec.se

Warning!

This program and its documentation are protected by Swedish copyright.
Unauthorized copying or distribution of it, in part or its entirety will be prosecuted to the full extent of the law.

AEC Göteborg (Head Office)
Första Långgatan 28B, Box 12093,
S-402 41 Göteborg, Sweden
Phone: +46 10 850 20 00, Fax: +46 10 850 20 10
www.aec.se
info@aec.se

AEC Stockholm
Solna Strandväg 78,
S-171 54 Solna, Sweden
Phone: +46 10 850 20 50, Fax: +46 10 850 20 70