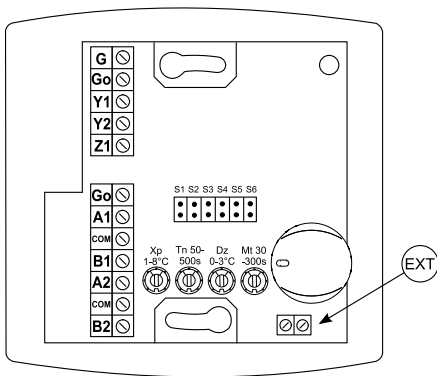


Coding by using jumpers

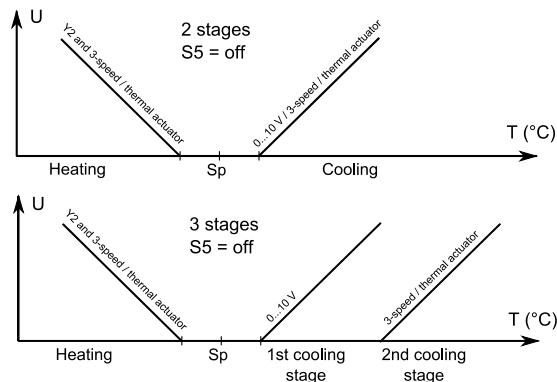
on = closed, off = open

S1	off* on	0...10 V 0...10 V	direct output to the cooling actuator reverse output to the cooling actuator
S2	off* on	0...10 V 0...10 V	direct output to the heating actuator reverse output to the heating actuator
S3	off* on	PI P	control mode (PI controller) control mode (P controller)
S4	off on*	3-speed motor thermal actuator	actuator type selection
S5	off on*	1-stage cooling 2-stage cooling	number of cooling stages
S6	off on*	I first II first	Y1 (0...10 V) cooling output works first 3-speed/thermal actuator cooling output works first

Wiring terminals, trimmers, coding

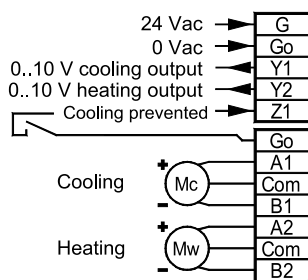


Stages

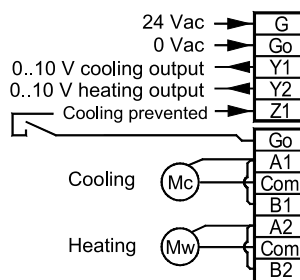


Connecting actuators

3-speed and 0...10 V motors



Thermal actuators and 0...10 V motors



Things to be taken into account during commissioning

- while changing trimmer positions or other settings, the setting values are shown on the HLS 33-N display (a display can be connected also temporarily for the commissioning procedure)
- When the 3-speed output is in the control area edge, the output is driven against the edge for 5 seconds every 5 minutes
- after a power failure, the 3-speed output is driven for 1,5 x running time to close the valve and to determine the position
- if the cooling is prevented but the cooling is still needed, the green indicator light flashes every 30 seconds

NOTE: Block the air flow coming through the cable protection tubes.